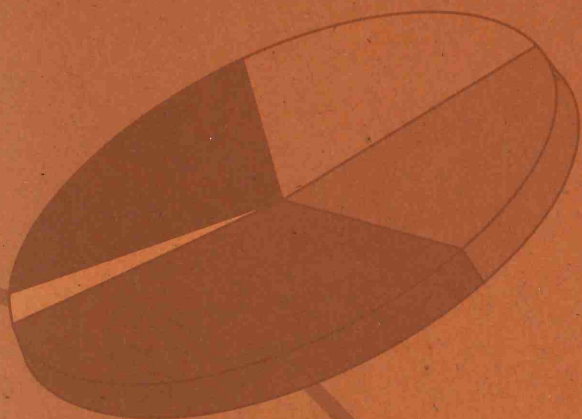
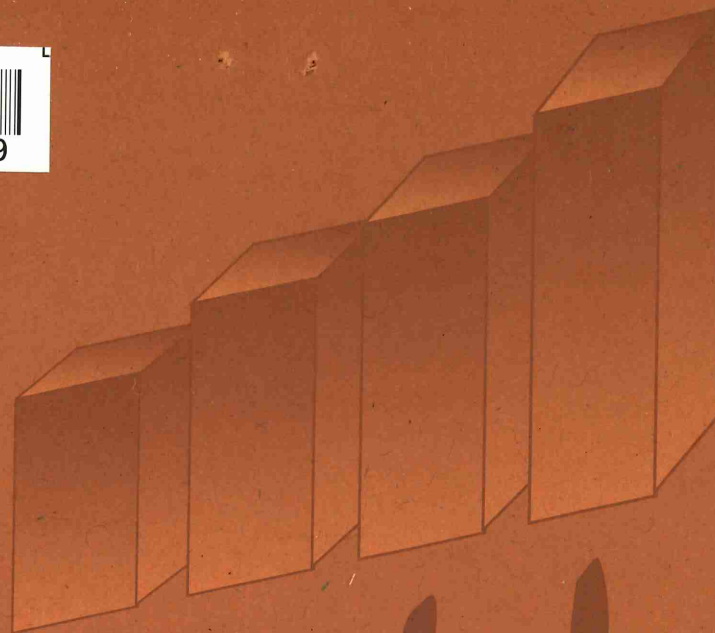


School
District



Profiles

LB
2817
.S38
1994/95

994-95

Minnesota  Children
Minnesota Department of Children, Families & Learning

October 1996

Bruce Johnson, Commissioner

Department of Children, Families & Learning

<http://children.state.mn.us>

This document was prepared and published by staff of the Data Management and Education Funding Teams, Minnesota Department of Children, Families and Learning, 845 Capitol Square Building, St. Paul, Minnesota 55101. Upon request this information may be made available in alternative formats.

RECEIVED

DEC 18 1996

LEGISLATIVE REFERENCE LIBRARY
STATE OFFICE BUILDING
ST. PAUL, MN 55155

Introduction	1
UFARS Sources of Expenditure Data	5
Trends and Patterns	6
Definitions	15
List of School Districts.....	20
Map - Minnesota Counties and Development Regions.....	23

STATISTICAL TABLES

Data for School Districts	25
Data for Counties, Development Regions and the State	45
Data for Enrollment Size Group.....	51
Summary Statistics	53

ERRATUM

Column 38 should read:

“1994 Adj. Net Tax Capacity”

*New ed. due
late Dec. mid
Enman, 6-5082*

TABLE OF CONTENTS

School District Profiles, 1994-95 is the twenty third in a series of annual publications which compare school districts in the areas of enrollment, staffing and finance. Although some item definitions have changed slightly over this period, it is still possible to make long term comparisons.

Interdistrict Cooperation

Legislation of the late 1970's and early 1980's encouraged Minnesota school districts to cooperate in the provision of educational services to students. The aegis for these efforts was two-fold, 1) to ensure that all students receive adequate course offerings and, 2) to make the

delivery of these courses more cost-efficient.

Laws enacted in 1979 and 1983 suspended the requirement that every school district provide educational services for all grades. This allowed districts to enter into agreements with each other for the provision of services for particular grades. Eighty districts participated in an Agreement for Secondary Education (ASE) or an Interdistrict Cooperation Agreement (ICA) during the 1994-95 school year. ICAs allow two or more districts to cooperate in providing services for specific grades. However, only one of

the districts may provide service for pupils in grades 10, 11 and 12. ASEs allow a district with fewer than 375 pupils in grades 7-12 to enter into an agreement with another district(s) to provide instruction to its secondary pupils. Districts in either of these arrangements are noted in parenthesis after the district name by an ICA or ASE respectively.

In 1994-95 the following districts participated in one or more of those agreements.

Agreements for Secondary Education (ASE)

243	Ortonville	451	Ceylon	593	Crookston
245	Bellingham	454	Fairmont	599	Fertile
		2448	Martin County West	604	Mentor
243	Emmons			630	Red Lake Falls
245	Glenville			2609	Win-E-Mac
413	Marshall	521	Ada	637	Redwood Falls
415	Lynd	522	Borup	652	Morton
424	Lester Prairie	611	Cyrus	893	Echo
427	Winsted	635	Milroy	2183	Granite Falls- Clarkfield
880	Howard Lake	769	Morris		

Interdistrict Cooperation Agreements (ICA):

021	Audubon	409	Tyler
024	Lake Park	418	Russell
057	Beardsley	584	Ruthton
055	Clinton-Graceville	421	Brownton
158	Gonvick	426	Stewart
161	Clearbrook	422	Glencoe
175	Westbrook	425	Silver Lake
641	Walnut Grove	440	Middle River
178	Storden Jeffers	678	Greenbush
633	Lamberton	523	Norman County East
638	Sanborn	526	Twin Valley
209	Kensington	582	Jasper
262	Barrett	583	Pipestone
263	Elbow Lake	631	Belview
265	Hoffman	648	Danube
228	Harmony	654	Renville
233	Preston	655	Sacred Heart
325	Lakefield	636	Morgan
330	Heron Lake	650	Franklin
328	Sioux Valley	731	Arlington
513	Brewster	732	Gaylord
516	Round Lake	736	Belgrade
341	Atwater	737	Brooten
464	Grove City	789	Clarissa
461	Cosmos	790	Eagle Bend
402	Hendricks	791	Grey Eagle
403	Ivanhoe	792	Long Prairie

In addition to ICAs and ASEs, six districts were members of a Cooperative Secondary Facility (CSF) as noted in parenthesis after their name. In this arrangement member districts jointly operate a separate school for the secondary pupils of each of the member districts.

1994-95 CSF Districts

128	Milan
218	Delevan
219	Elmore
377	Madison
784	Appleton
2148	Blue Earth

Consolidations

Recent State Board of Education rules mandating more rigorous minimal course offerings, combined with financial inducements, has resulted in a number of school district consolidations in recent years. A significant number of these consolidations developed out of prior interdistrict cooperation agreements (ASE or ICA) between the districts. Between the 1993-94 and the 1994-95 school year twenty-five school districts combined to form twelve new districts. The table on the right lists the districts that have consolidated.

1993 -94 District Number	1994-95 District Number
145 Glyndon-Felton 147 Dilworth	2164 Dilworth-Glyndon- Felton
570 Finlayson 573 Hinckley	2165 Hinckley-Finlayson
412 Cottonwood 896 Wood Lake	2167 Lakeview
762 Ellendale-Geneva 827 New Richland-Hartland	2168 NRHEG
504 Slayton 918 Chandler-Lake Wilson	2169 Murray County
483 Motley 793 Staples	2170 Staples-Motley
354 Kennedy 2359 Kittson Central	2171 Kittson Central
254 Kenyon 258 Wanamingo	2172 Kenyon-Wanamingo
442 Oslo 2163 Warren-Alvarado	2176 Warren-Alvarado-Oslo
126 Clara City 127 Maynard 346 Raymond	2180 MACCRAY
892 Clarkfield 894 Granite Falls	2183 Granite Falls-Clarkfield
669 Magnolia 670 Luverne	2184 Luverne

FOR MORE INFORMATION

Copies of *School District Profiles, 1994-95* may be purchased from:

Minnesota's Bookstore
Print Communications Division
117 University Avenue
St. Paul, Minnesota 55155
Telephone: (612)297-3000 or
Toll Free: 1-800-657-3757

If you have comments or questions concerning information in this report, or would like further information, please contact:

Minnesota Department of
Children, Families & Learning
Data Management Team
845 Capitol Square Building
St. Paul, MN 55101
Telephone: (612)296-2400
TTY: (612)297-2094

For more specific information regarding financial data, please contact:

Financial Management Team
542 Capitol Square Building
St. Paul, MN 55101
Telephone: (612)296-4436

The table below is intended for use by persons who are familiar with the Uniform Financial Accounting and Reporting System (UFARS) and its manual, *Manual for the Uniform Financial Accounting and Reporting System for Minnesota Schools*.

Each of the 16 expenditure categories in *Profiles* includes all expenditures within a defined set of funds, programs and objects as defined in the above table. The table on the right summarizes the funds, major program categories and object categories used for *Profiles*.

Funds

- 1 General
- 2 Food Service
- 3 Pupil Transportation
- 4 Community Service
- 5 Capital Expenditure
- 6 Building Construction
- 7 Debt Service
- 9 Trust and Agency

Objects

- 460 Textbooks
- 500 599 Capital Expenditures
- 910 Transfers to Other Funds

Major Program Categories

- 0 Districtwide (no specific program)
- 1 - 99 District and School Administration
- 100-199 District Support Services
- 200-299 Regular Instruction
- 300-399 Vocational Instruction
- 400-499 Exceptional Instruction
- 500-599 Community Services
- 600-699 Instructional Support Services
- 700-799 Pupil Support Services
- 800-899 Sites, Buildings and Equipment
- 900-999 Other Programs

Expenditure Categories

Categories Used in the Report

- 18. District and School Administration
- 19. District Support Services
- 20. Regular Instruction
- 21. Vocational Instruction
- 22. Exceptional Instruction
- 23. Instructional Support Services
- 24. Pupil Support Services
- 25. Operations and Maintenance
- 26. Food Service
- 27. Pupil Transportation
- 28. Other operating programs
- 29. Total PK-12 Operating Expenditures
(this is the total of categories 18 through 28)
- 30. Community Service
- 31. Capital Outlay
- 32. Building Construction
- 33. Debt Service

Funds

- 1 and 9
- 1 and 9
- 1 and 9
- 1 and 9
- 1 and 9
- 1 and 9
- 1 and 9
- 1 and 9
- 2
- 3
- 1 and 9
- 1, 2, 3 & 9
- 4
- 5
- 1, 2, 3 & 4
- 6
- 7

Programs

- 1 - 99
- 100 - 199
- 200 - 299
- 300 - 399
- 400 - 499
- 600 - 699
- 700 - 799
- 800 - 899
- All
- All
- 0, 500 - 599 & 900 - 999
- All
- All
- All
- All
- All
- All

Objects

- All objects except 500-599 and 910
- All but 910 & 460*
- 500 - 599
- All but 910
- All but 910

* 460 textbook expenditures have been allocated, based on program code, into categories 18-28 to assure valid inter-year comparisons.

STUDENTS:

The enrollment increases which began with the 1985-86 school year continue, as shown in *Figure 1*. Enrollment in 1994-95 totaled 808,034 a 1.6 percent increase over the 1993-94 total of 795,002. Although the majority of Minnesota's enrollment increases were the result of increased births, in-migration has become a significant factor in recent terms. After more than a decade of declines, Minnesota's enrollment began to increase in the mid 80's; these increases are projected to continue into the 21st century (see *Figure 1*). However, as indicated by the map in *Figure 2*, this over-the-decade growth was not shared throughout the state. Districts in and around the Twin Cities metropolitan area experienced significant growth over the past decade, as did districts around St. Cloud and in the area between St. Cloud and the Twin Cities. By contrast many districts in the southwest, northeast and far northwest counties of the state either grew very little, or experienced declining enrollment.

Minnesota's school districts vary greatly in enrollment size. The largest 10 districts, all in metropolitan areas, enrolled almost 30 percent of Minnesota's public school pupils. Or, as shown in *Table 1*, ten percent of Minnesota districts enrolled over 54 percent of the state's public school pupils.

Minnesota, as well as the rest of the nation, is experiencing a growth in the proportion of its population classified as minorities. This minority growth also shows up in school enrollments as seen in *Figure 3* and *Table 2*;

FIGURE 1

Average Daily Membership Actual and Projected
1978-79 through 1996-97

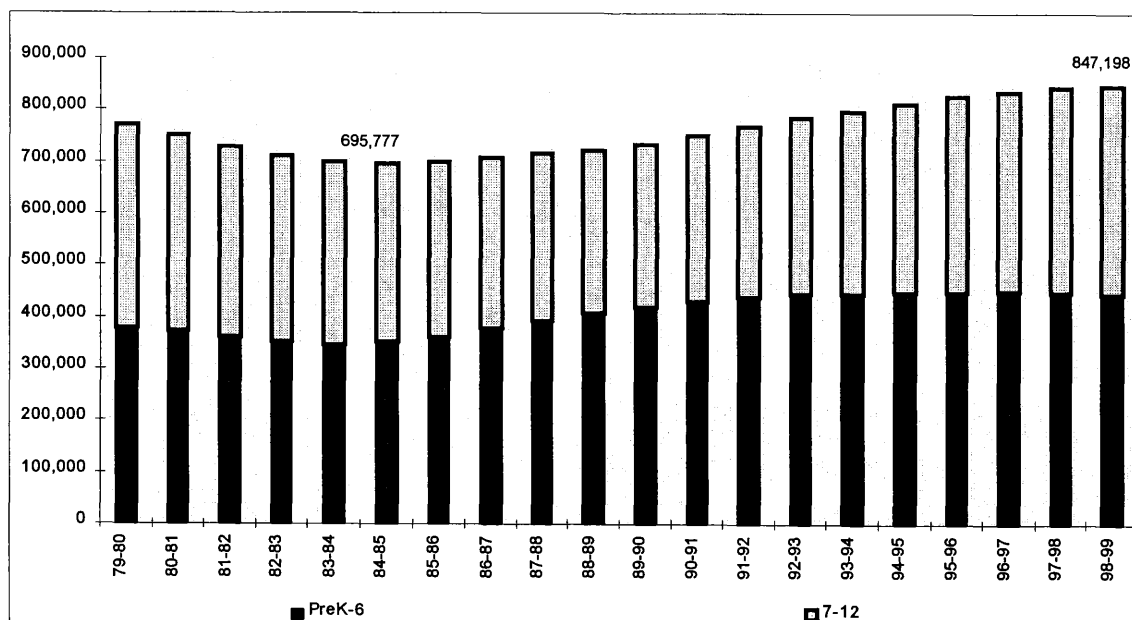


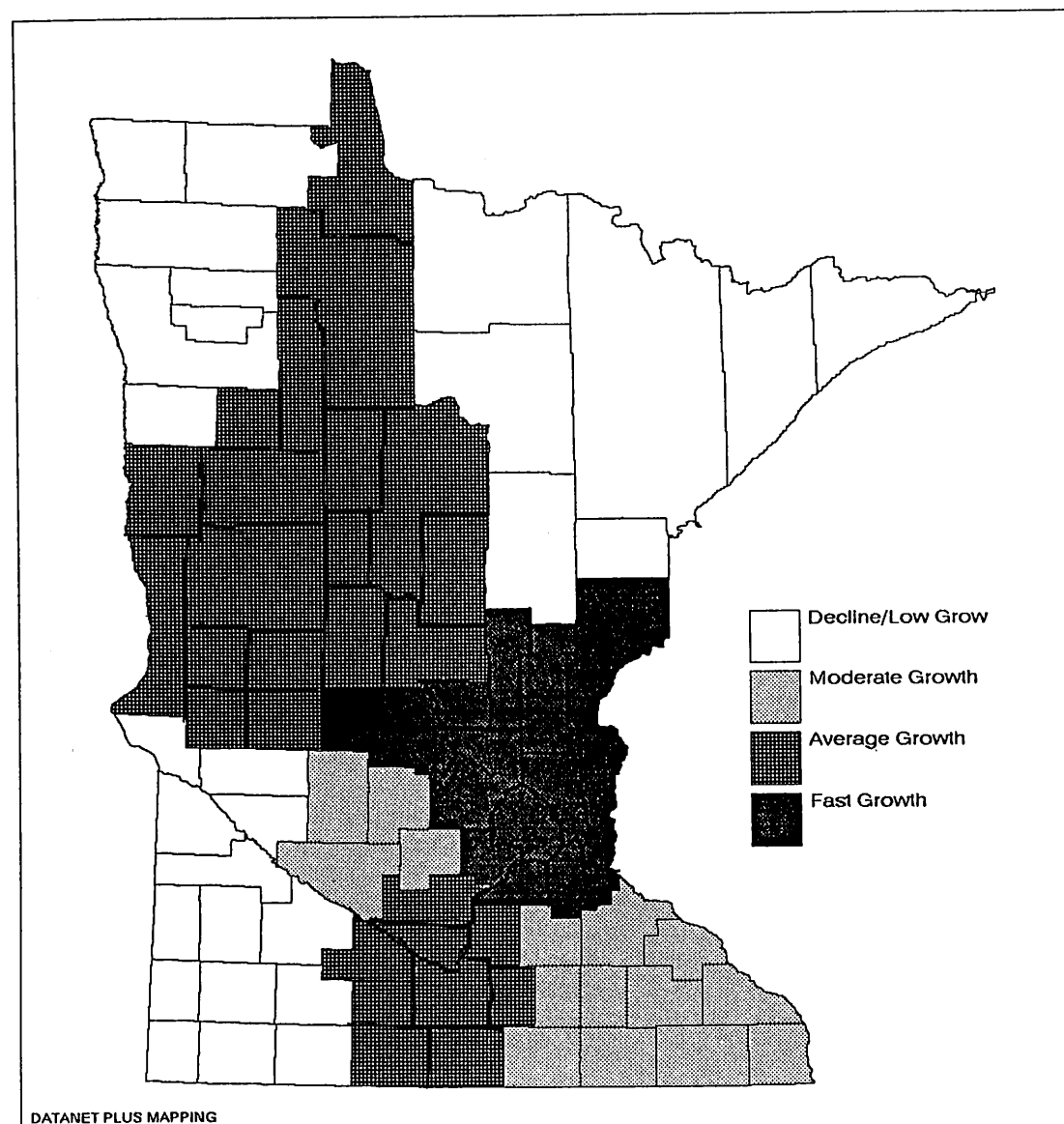
TABLE 1

Distribution of Minnesota 1994-95 Resident
ADM by Ten Enrollment Size Groups

Group Number	Size Range 1994-95 Resident ADM	Number of District	Total Resident ADM	Percent State Total
1	0 - 234	37	6,211	.8
2	235 - 339	38	10,661	1.3
3	340 - 469	38	14,947	1.8
4	470 - 624	38	20,597	2.5
5	625 - 874	38	28,354	3.5
6	875 - 1149	38	38,488	4.8
7	1150 - 1499	39	51,178	6.3
8	1500 - 2199	39	70,957	8.8
9	2200 - 4449	39	124,937	15.7
10	4440 or Higher	39	442,407	54.8
State Totals		382	808,034	100.0

FIGURE 2**ADM Growth - Minnesota Development Regions**

Growth between 1985-86 and 1994-95

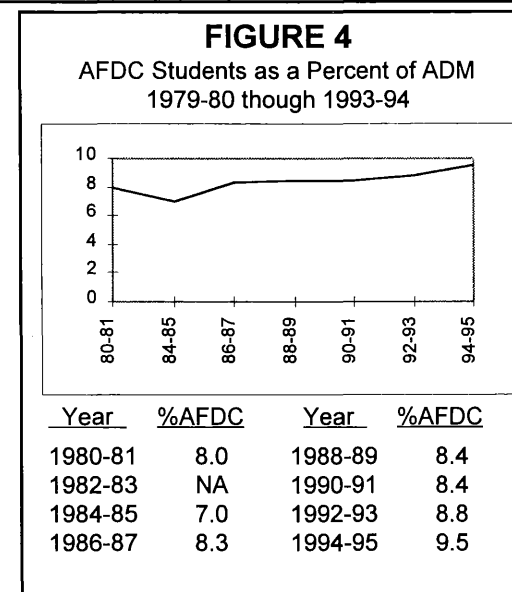
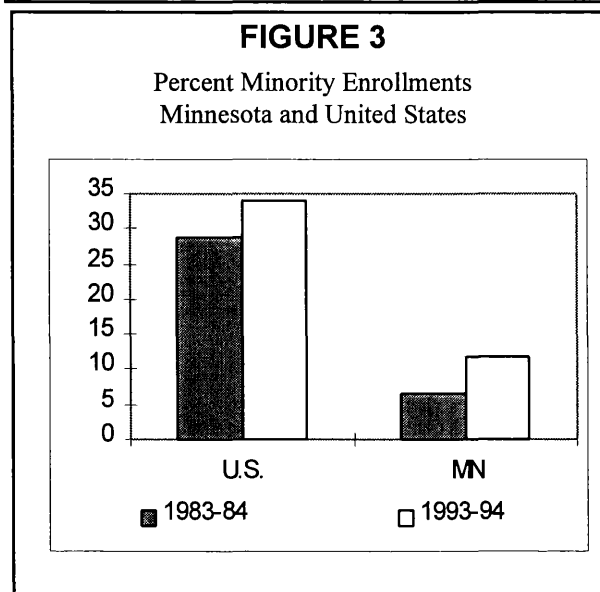


minority enrollment percentages increased significantly (from 6.6% in 1983-84 to 11.9% in 1994-95) they still constitute a very modest percentage of total Minnesota PK-12 public school enrollments--approximately one-third that of the U.S. as a whole. Further, Minnesota's minority *mix* is quite different than that of the United States. Blacks constitute approximately half of U. S. minority enrollments, Hispanics an additional 37 percent, with Asians and Native Americans the remaining 14 percent (for the 1993-94 school year). By contrast, Blacks represent 38 percent of Minnesota's minority enrollments, Asians 31 percent, with Hispanics and Native Americans each approximately 16 percent. Native Americans have always constituted a significant proportion of Minnesota's population; its Asian population became significant after the Vietnam war.

Figure 4 indicates the percentage of Minnesota students who are from families who receive AFDC payments. This proxy measure of poverty has increased continuously over the decade.

TABLE 2					
Percent Minority Enrollments Minnesota and United States					
Year	Native American	Black	Asian	Hispanic	Total Minority
1986-87					
USA*	.09	16.1	2.8	9.9	29.6
MINN**	1.5	2.1	1.7	0.9	6.1
1993-94					
USA*	1.0	16.6	3.6	12.7	33.9
MINN**	1.8	4.2	3.5	1.7	11.1
1994-95					
USA*	NA	NA	NA	NA	NA
MINN**	1.9	4.5	3.7	1.8	11.9

* Source: *Digest of Education Statistics, 1995; National Center for Education Statistics*
 ** Includes students enrolled in cooperatives and other non-traditional districts and may not agree with state averages in *Profiles*.



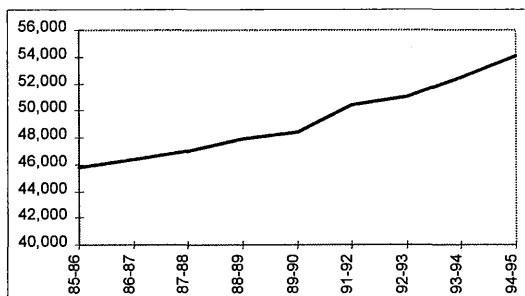
INSTRUCTIONAL STAFF

Teachers, together with other district staff, are the most important input in the educational process. They also constitute a district's **largest operating cost**. *Figure 5* shows the number of these staff over the past decade as well as the ratio of pupils (in ADM) to licensed professional staff. This ratio varies little over time except during periods of budgetary crises such as in the 1982-83 school year.

Teacher salaries are also a major factor in instructional costs. And these salaries are, in turn, determined by the interplay of a number of variables including salary negotiations between staff and their local school boards, and the age, experience, and education mix of the district's staff. Rapidly growing school districts will have a higher proportion of younger, less experienced staff with fewer advanced degrees. This, in turn, will translate into lower average salaries than in more stable districts with larger proportions of older, more experienced and better educated staff. *Figures 7 and 8* show how the age and educational attainment of Minnesota school teachers have changed over the decade. It indicates a cadre which is somewhat older but which possesses fewer advanced degrees.

FIGURE 5

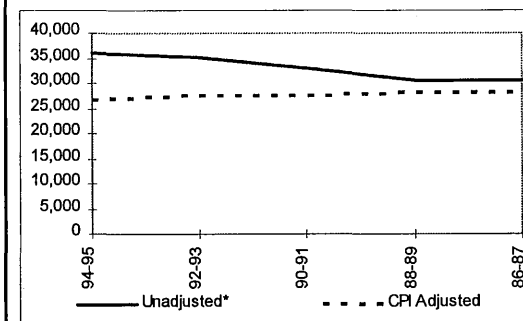
State Total Professional Staff
1985-86 through 1993-94



Year	Staff	Pupils/Staff
1985-86	45,789	15.2
1986-87	46,425	15.2
1987-88	47,031	15.2
1988-89	47,931	15.0
1989-90	48,372	15.1
1990-91	49,138	15.1
1991-92	50,386	15.0
1992-93	51,042	15.2
1993-94	52,415	15.1
1994-95	54,032	14.9

FIGURE 6

Average Minnesota Teacher Salary*

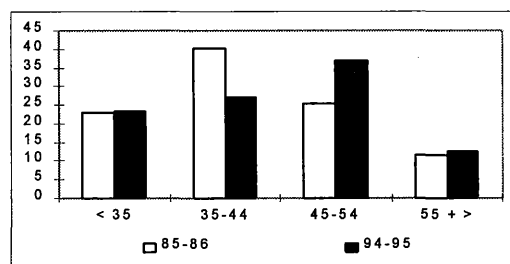


Year	Unadjusted	CPI Adjusted
1994-95	35,948	26,747
1992-93	35,093	27,524
1990-91	33,126	27,468
1988-89	30,660	26,180
1986-87	28,340	28,340

* Due to Minnesota's alternative year bargaining year cycle, valid data are only available for school years ending in odd integers.

FIGURE 7

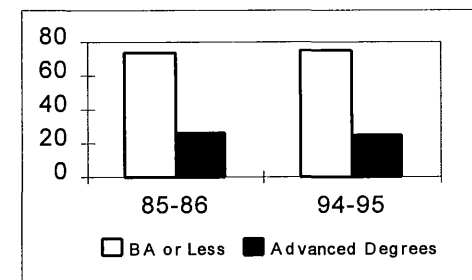
Age of Classroom Teachers
1985-86 through 1994-95



Age	1985-86	1994-95
< 35	22.9	23.5
35-44	40.1	27.0
45-54	25.4	36.9
55 >	11.6	12.6

FIGURE 8

Distribution of Minnesota Classroom Teachers
By Educational Attainment
1985-86 and 1994-95



	1985-86	1994-95
BA or Less	73.3	74.8
Advanced Degrees	26.3	25.2

FINANCIAL

Revenues

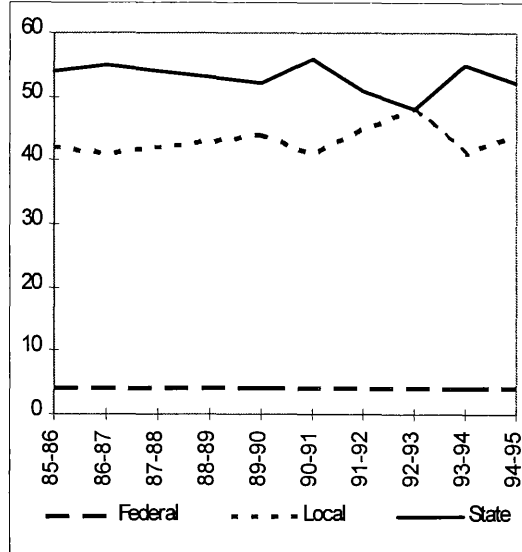
School revenues come from three sources - state, local (predominantly property taxes) and Federal. *Figure 9* indicates that the percentage of revenue received by Minnesota school districts from the three sources remained fairly constant over most of the last decade until 1991-92. In 1991-92, as a result of state budgetary problems, school districts were required to *recognize* certain levy receipts earlier than in prior years. This earlier recognition had the effect of shifting the state/local mix towards a larger local contribution. The situation worsened in 1992-93 but rebounded in 1993-94 to percentages typical of most of the decade.

Minnesota's four percent Federal revenue percentage continues to lag behind the national average of approximately six percent. Federal funds are typically targeted towards specific disadvantaged client populations — groups which often constitute a smaller proportion of Minnesota's enrollment than is the situation in most states.

Another way of examining Minnesota's PK-12 revenues is by fund. A fund is a self-contained set of accounts established for a specifically defined set of fiscal activities such as Food Service or Debt Redemption. *Table 3* compares Minnesota school district revenues, by the eight UFARS funds, for the years 1985-86 and 1994-95. Over that period, the proportion of revenues allocated to nonoperating funds has grown dramatically, led by very sizable increases in the Building Construction fund. Publicity in recent years concerning America's rapidly

FIGURE 9

Statewide Average Sources
Of Revenue
All Funds
1984-85 through 1994-95



Year	Federal	Local	State
85-86	4%	42%	54%
86-87	4	41	55
87-88	4	42	54
88-89	4	43	53
89-90	4	44	52
90-91	4	41	56
91-92	4	45	51
92-93	4	48	48
93-94	4	41	55
94-95	4	44	52

TABLE 3

Percent of Minnesota Revenues
By Fund
1985-86 and 1994-95

	1985-86	1994-95
General Fund	74.2%	69.6%
Food Service Fund	4.1	3.2
Transportation Fund	6.3	4.9
Community Service Fund	2.4	3.3
<i>Total, Operating Funds</i>	<i>87.0</i>	<i>81.0</i>
Capital Expenditure Fund	4.5	4.7
Building Construction Fund	3.2	8.2
Debt Redemption Fund	5.0	5.2
Trust and Agency Fund	0.3	0.9
<i>Total Nonoperating Funds</i>	<i>13.0</i>	<i>19.0</i>
TOTAL	100.0	100.0

deteriorating infrastructure, including school facilities, likely is a major factor in the increase in monies dedicated to Minnesota's school facilities.

Expenditures

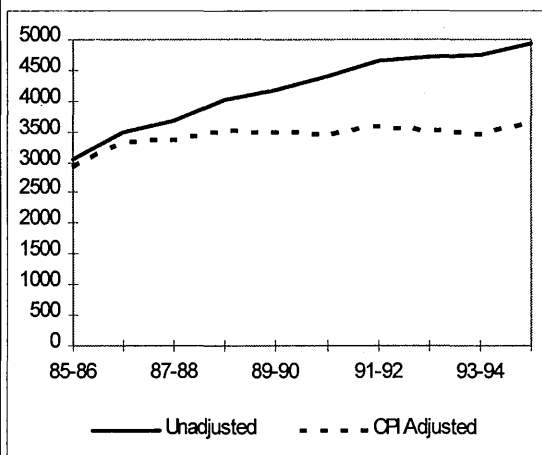
Figure 10 indicates that statewide average operating expenditures have grown at a rate exceeding inflation over most of the decade - as represented by the Consumer Price Index (CPI). It should also be noted that these expenditures vary significantly from district-to-district as shown in Figure 11. The top spending five percent of districts expended approximately 50 percent more than the lowest spending five percent.

The distribution of expenditures by program has also changed over the decade as indicated in Table 4. The percent expended on instruction has increased significantly while the remaining four program areas either declined or changed very little.

Figure 12 indicates that **nonoperating expenditures** also continued to grow at a rate exceeding inflation. Nonoperating expenditures are those expenditures which are *fixed* in the short run, i.e., they vary little with changes in enrollment. Included are Capital Outlay, Building Construction, and Debt Service (columns 31, 32, and 33, respectively). Part of their rapid growth is the result of equalizing the capital expenditure levy which had the effect of providing poorer districts with additional dollars for capital needs.

FIGURE 10

State Average Operating Expenditures
Per Pupil Unit
1985-86 through 1994-95



Year	Unadjusted	CPI Adjusted
1985-86	3039	2928
1986-87	3485	3322
1987-88	3684	3374
1988-89	4017	3521
1989-90	4192	3495
1990-91	4398	3474
1991-92	4655	3592
1992-93	4706	3520
1993-94	4746	3465
1994-95	4955	3632

TABLE 4

Distribution of Operating Expenditures
By Program
1984-85 and 1993-94

	1985-86	1994-95
Administration	8.6%	8.7%
Instruction	61.9	68.1
Student Services	14.1	13.0
Operations and Maintenance	9.7	7.6
Other Operating Programs	5.7	2.6

FIGURE 11

Distribution of District's Operating
Expenditures Per Pupil Unit
Selected Percentiles
1994-95

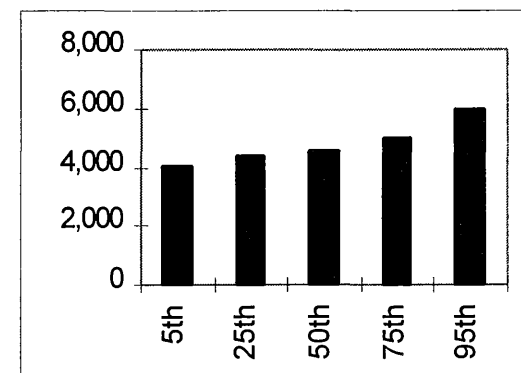
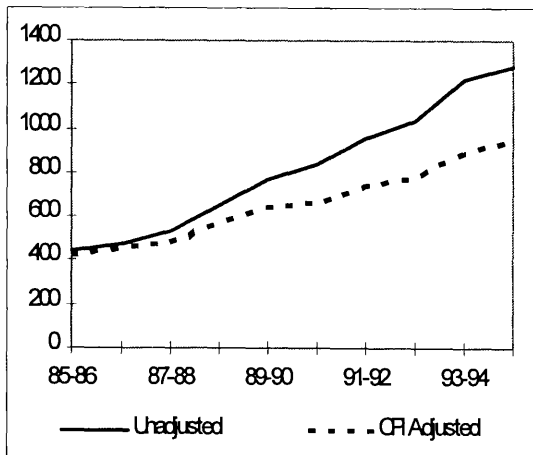


FIGURE 12

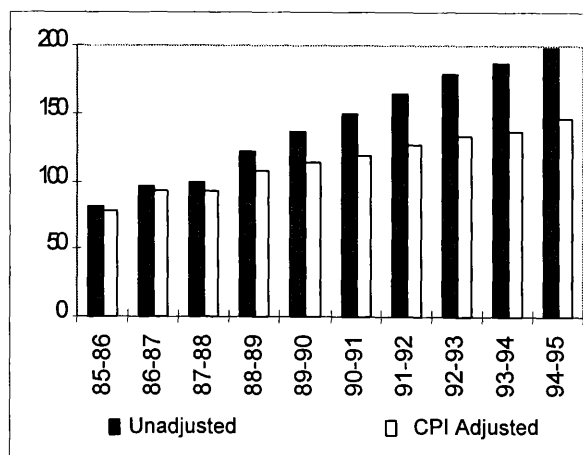
State Average Nonoperating Expenditures
Per Pupil Unit
1985-86 through 1994-95



Year	Unadjusted	CPI Adjusted
1985-86	439	423
1986-87	476	454
1987-88	530	485
1988-89	651	571
1989-90	770	642
1990-91	836	660
1991-92	958	739
1992-93	1040	778
1993-94	1218	890
1994-95	1284	946

FIGURE 13

State Average Community Service Expenditures
Per Pupil Unit
1985-86 through 1994-95



Year	Unadjusted	CPI Adjusted
1985-86	81	78
1986-87	96	92
1987-88	100	92
1988-89	122	107
1989-90	137	114
1990-91	149	118
1991-92	165	127
1992-93	179	134
1993-94	187	137
1994-95	198	146

COMMUNITY SERVICE:

Figure 13 shows the growth in community service expenditures since 1985-86. They also have grown faster than the general rate of inflation during the decade. Community education/community service programs were *traditionally* perceived as consisting primarily of courses in sports, recreation and crafts, self improvement, and skills enhancement. However, beginning with the 1984-85 school year the scope of the program was expanded with the initiation of the Early Childhood and Family Education (ECFE) program. This program is designed to improve the parenting skills of parents with pre-school aged children and, as a result, the readiness of these children for school.

The community education/community service umbrella was further expanded in 1987-88 with the addition of the Youth Development Program. This is an outreach program designed to involve school aged youth in various school/community decision making processes. The addition of these two programs, with their attendant levy authorities, explain much of the growth in community education/community service expenditures since 1985-86; they are now co-equals with the more traditional programs.

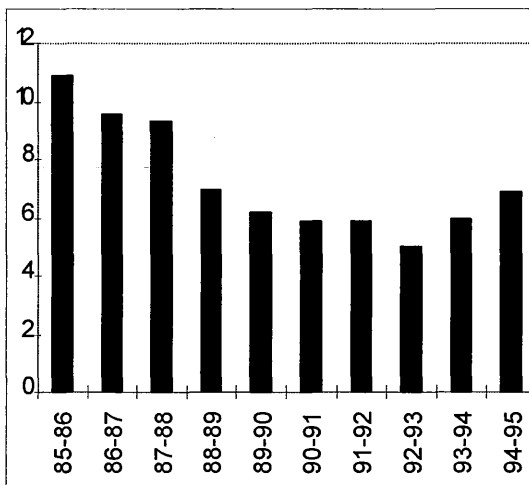
OPERATING FUNDS BALANCE:

A school district's non-designated operating fund balance is a measure of its financial health at the end of the school year. It can be either positive or negative. A positive balance represents a financial cushion; a negative balance means that liabilities (debt) exceed assets. Districts with a negative balance greater than 2.5 percent of their prior years operating expenditures are in violation of expenditure limitations as specified by Minnesota Statute and are required to submit a final plan to the Commissioner of Children, Families and Learning defining their plan to eliminate the deficit. By contrast, districts with positive net operating fund balances exceeding \$600 per pupil unit will have their following year's general education revenue reduced.

Figure 14 shows the state average operating funds balance, as a percentage of operating expenditures for the past decade. The ratio declined dramatically until 1993-94 when a modest rebound occurred. Although some districts were forced to *spend down*, much of the decline is the result of districts choosing to dip into their financial cushion in order to maintain or expand existing levels of service during periods when aid payments did not keep pace with their needs. Figure 15 indicates that a long term upward trend in districts who exceeded expenditure limitations came to an abrupt halt. The number of these districts

FIGURE 14

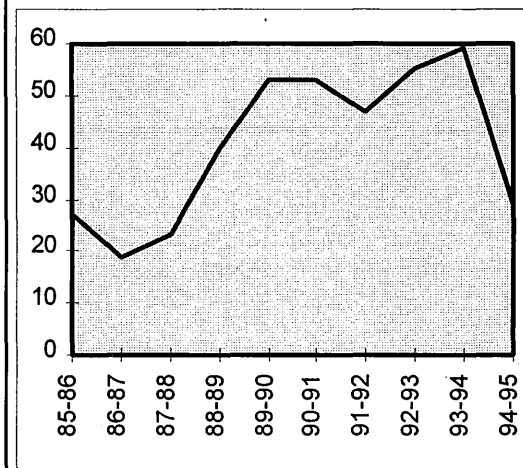
State Average Operating Funds Balance
As Percent of Operating Expenditures
1985-86 through 1994-95



Year	Fund Balance	Operating Expenditures	Percent
1985-86	332	3039	10.9
1986-87	335	3485	9.6
1987-88	343	3684	9.3
1988-89	282	4017	7.0
1989-90	259	4192	6.2
1990-91	258	4398	5.9
1991-92	275	4655	5.9
1992-93	236	4706	5.0
1993-94	285	4746	6.0
1994-95	338	4955	6.8

FIGURE 15

Number of Districts
Exceeding Expenditure Limitations
1985-86 through 1994-95

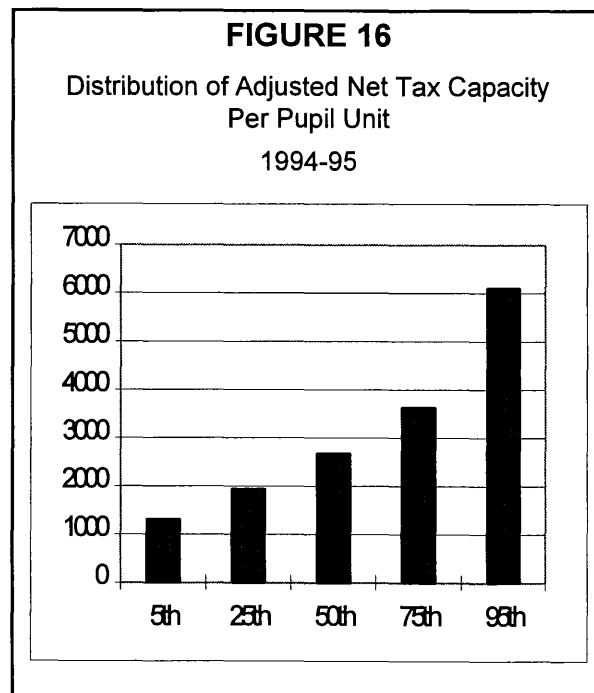


Year	No. of Districts
1985-86	27
1986-87	19
1987-88	23
1988-89	40
1989-90	53
1990-91	53
1991-92	47
1992-93	55
1993-94	59
1994-95	29

decreased by approximately 50 percent between 1993-94 and 1994-95. Much of this improvement was the result of consolidations of previously out-of-compliance districts into new, more financially viable entities.

ADJUSTED NET TAX CAPACITY

Adjusted Net Tax Capacity per pupil unit is a measure of a district's real and personal property subject to local property tax levy. There is great disparity in the wealth of school districts. It is these disparities and their effect on the equitable funding of PK-12 education which is the cause of many of the education funding lawsuits which began in the 70's. *Figure 16* indicates that the property richest five per percent of Minnesota's districts have over four times the Adjusted Net Tax capacity of the property poorest five percent of districts.



The tables on pages 24 through 54 contain 38 separate statistics for each school district, county and region in the state. Definitions of these 38 statistics are given below. All data are for the 1994-95 school year.

1994-95 RESIDENT AVERAGE DAILY MEMBERSHIP

Average daily membership (ADM) is the average number of pupils in membership during the school year. Pupils need not be in attendance to be counted in ADM, but they must be in membership (i.e., currently enrolled in the district). For example, a pupil who is enrolled for the entire school year counts as 1.0 ADM; a pupil who is enrolled for exactly half the school counts as 0.5 ADM.

The ADM counts in this report are, more specifically, counts of total resident ADM including all residents who are:

- a.) enrolled in their home district;
- b.) educated in another district to whom tuition is paid, or
- c.) attending another district under the Enrollment Options law.

Resident membership includes:

1. **Prekindergarten Handicapped** ADM of prekindergarten students enrolled in special education

programs.

2. **Kindergarten** ADM of students enrolled in kindergarten classes.
3. **Elementary, Grades 1-6** ADM of students enrolled in grades 1-6, including students in elementary-level ungraded and special education classes.
4. **Secondary, Grades 7-12** ADM of students enrolled in grades 7-12, including students in secondary level ungraded and special education classes.
5. **Total** Total ADM of all district residents, prekindergarten through grade 12; this is the total of columns one through four.

PUPIL DATA

6. **Percent Minority** The percentage of the district's students who are of Native American, Alaskan, Black, Asian or Hispanic ancestry.
7. **Percent Attendance** The average ratio of days attended to days enrolled for all students in the district.
8. **Percent Transported** The number of resident public school students transported to and from school

twenty or more days, as a percentage of the district's resident pupils.

PROFESSIONAL STAFF

These statistics provide information about each district's professional staff. Staff are counted in full time equivalents (FTE). For example, a full time staff member is counted as 1.0 FTE; one employed only half time is counted as 0.5 FTE. Staff counts include only elementary and secondary personnel, postsecondary personnel are excluded.

9. **Total Staff FTE** The total number of licensed professional staff employed by the district, measured in full-time equivalents (FTE). This count includes administrators, classroom teachers and all other licensed professional personnel.
10. **Pupil Staff Ratio** The average daily membership of all students (both residents and nonresidents) who were enrolled in the school district, divided by the number of professional staff (column 9).

TAX CAPACITY RATES

These figures show the tax burden, expressed as a percent of tax capacity, for school district property taxes payable in 1994. Taxes payable in 1995 provide revenue for the 1995-96 school year.

11. Auditor Percent The actual school district tax rate as determined by the county auditor. With a rate of five percent, a property owner would be taxed \$5 for each \$100 of tax capacity. Because of the differences in property assessment levels between counties, comparisons of auditor tax rates among districts may be misleading. This figure includes additional tax rates for special intermediate districts (287, 916 and 917) where they are part of a district's tax burden.

12. Equalized Percent This tax rate is computed by multiplying the auditor percent (item 11) by the 1994 market sales ratio. This ratio is equal to the market values, as determined by the local assessor, divided by actual selling prices. For state assessed properties, such as utilities, the ratio is 1.00.

Equalized percents are computed to compensate for varying assessment practices. Thus, when making

interdistrict comparisons, these rates provide a more valid comparison.

PUPIL UNITS (Weighted ADM)

13. Resident Pupil Units This figure is computed by applying weightings to a district's resident average daily membership (as defined above).

- Kindergarten - each ADM counts as .530 pupil unit.
- Prekindergarten and handicapped kindergarten - each ADM counts as 1.00 pupil unit.
- Elementary - each ADM counts as 1.06 pupil unit.
- Secondary - each ADM counts as 1.30 pupil unit.

Resident pupil units are used in computing the district's general education revenue and property tax limitations.

14. Total Pupil Units This is a count of pupil units which adjusts the resident pupil units in column 13 to better reflect the expenditures reported by the school districts. It includes the following:

- Residents attending the home district,
- resident students tuitioned to other

school districts,

- nonpublic school students being served via a shared time program,
- nonresident students who transfer in via one of the attendance options programs, and
- nonresident students whose tuition is paid by a parent or out-of-state source.

Excluded are pupil units which:

- represent that portion of a student's time spent in a postsecondary institution via the Postsecondary Enrollment Options Program, or
- for residents who transfer to other districts via one of the Attendance Options Programs.

Revenue Percentages

These three columns show the percentage of each district's revenues from the federal government, state government, local and other sources. The percentages are based on all 1994-95 revenue reported by each district, except for proceeds from sales of real property and equipment, insurance recoveries, sales of bonds, loans and interfund transfers.

15. Federal The percentage of revenues from the federal government, whether paid directly or through another

governmental unit.

16. State The percent of revenues from the Minnesota State government.

17. Local and Other The percentage of revenues from local and other sources. This category includes revenues from property taxes, interest, rent, gifts, tuition, fees, and other revenue not classified as either federal or state.

1994-95 EXPENDITURES PER PUPIL UNIT

Columns 18 through 22 show each district's 1994-95 expenditures in sixteen different categories, divided by total pupil units (column 14). Columns 18 through 30 include all expenditures for the indicated purpose, except related capital expenditures.

18. District and School Administration Expenditures for the school board and for the office of the superintendent, principals, and any other line administrators who supervise staff.

19. District Support Services Expenditures for central office administration and central office operations not included in district and school administration (column 18). Includes expenditures for business services, data processing, legal

services personnel office, printing, and the school census.

20. Regular Instruction Expenditures for elementary and secondary classroom instruction, not including vocational instruction (column 21) and exceptional instruction (column 22), and for co-curricular and extracurricular activities. Includes salaries of teachers, classroom aides, coaches, and expenditures for classroom supplies and textbooks.

21. Vocational Instruction Expenditures in secondary schools for instruction that is related to job skills and career exploration. Includes expenditures for home economics, as well as industrial, business, agriculture, and distributive education.

22. Exceptional Instruction Expenditures for instruction of students who, because of atypical characteristics or conditions, are provided educational programs that are different from regular instructional programs. Includes expenditures for:

- Special instruction of students who are emotionally or psychologically handicapped, gifted and talented, or mentally

retarded;

- for students with physical, hearing, speech, and visual impairments; and
- students with special learning and behavior problems.

23. Instructional Support Services Expenditures for activities intended to help teachers provide instruction, not including expenditures for principals or superintendents. Includes expenditures for assistant principals, curriculum development, libraries, media centers, audio visual support, staff development, and computer assisted instruction.

24. Pupil Support Services Expenditures for all noninstructional services provided to students, not including transportation and food. Includes expenditures for counseling, guidance, health services, psycho-logical services, and attendance and social work services.

25. Operations and Maintenance Expenditures for operation, maintenance, and repair of the district's buildings, grounds, and equipment. Includes expenditures for custodians, fuel for buildings, electricity, telephones, and repairs

26. Food Service Expenditures for the preparation and serving of meals and snacks to students.

27. Pupil Transportation Expenditures for transportation of students, including salaries, contracted services, fuel for buses, and other expenditures.

28. Other Operating Programs* Expenditures for general fund operating programs necessary to a district's operations but not assignable to other programs. These can include federally funded community education services, property and liability premiums, unemployment insurance premiums, principal and interest on noncapital obligations, and nonrecurring costs such as judgments and liens.

29. Total PK-12 Operating Expenditures The total of the eleven preceding categories of expenditures (columns 18 through 28).

This figure includes all expenditures incurred for the

benefit of elementary and secondary education during the 1994-95 school year, except capital and debt service expenditures.

30. Community Services Expenditures for recreation, civic activities, adult education, early childhood education, or similar programs which are not conducted primarily for elementary and secondary students, and for noncredit summer school programs.

31. Capital Outlay All capital expenditures charged to the operating funds plus expenditures charged to the district's capital expenditure fund.

32. Building Construction All expenditures charged to the district's building construction fund. Expenditures are for major capital projects funded by bond proceeds, state capital loan, state facility grant or the downpayment levy.

33. Debt Service Expenditures for repayment of long term debt (see

column 37) including payments of principal and interest on bonds and capital loans.

OTHER MEASURES PER PUPIL UNIT

34. Operating Fund Balance This figure is a measure of the district's financial condition at the end of the 1994-95 school year, and of resources available for use in future years. It is equal to the sum of the undesignated balances on June 30, 1994, from the four operating funds (general, food service, pupil transportation, and community service), excluding the amount of statutory operating debt; this balance is then divided by 1994-95 resident pupil units (column 13).

35. Change in Fund Balance The difference between the district's operating funds balance on June 30, 1995 (see definition 34 above) and on June 30, 1994, divided by 1994-95 resident pupil units. This is essentially equal to the difference between the district's 1994-95 revenues and expenditures, for the

* Most school districts included all expenditures for employee benefits in the same UFARS programs as the employees' salaries. Thus, for example, health insurance for the superintendent is included with *district and school administration* (column 18) and benefits for teachers are included with instructional programs (columns 20, 21 and 22). Other districts incorrectly report all expenditures for employee benefits separately; for these districts, the expenditures show up in *other operating programs* (column 28). Because of this difference in accounting practices, there is significant variation in the amounts reported in column 28.

four operating funds combined. Thus, a negative number indicates that the district's expenditures in the operating funds were greater than its revenues.

36. State and Local Operating

Costs This figure is also called adjusted maintenance cost. it is used to measure that portion of the overall cost of Public PK - 12 education which is financed from state and local sources. It is computed as follows:

Sum of general, food service and agency fund expenditures,

Plus textbook expenditures from the capital expenditure fund,

Minus transfers between funds,

Minus revenue from the federal government,

Minus revenue from sale of food and materials,

Minus admission fees and gate receipts from school activities,

Minus special education tuition

This total is then divided by 1994-95 total pupil units (column 14).

37 Long Term Debt The amount of long term debt outstanding on June 30, 1995, divided by 1994-95 resident pupil units. Long term debt includes bonds and capital, debt service and energy loans from the state.

Beginning with the 1994-95 school year, ending June, payables for the following will also be included:

- a.) separation and severance pay,
- b.) special assessments,
- c.) capitalied levies and
- d.) compensated absences

38. 1994 Adjusted Net Tax Capacity

The 1994 adjusted net tax capacity of the district divided by 1994-95 resident pupil units. This figure is an indicator of the district's ability to raise revenue through local property taxes.

DISTRICT NAME	NUMBER	REGION	COUNTY
Ada	521	1	Norman
Adrian	511	8	Nobles
Aitkin	001	3	Aitkin
Albany	745	7W	Stearns
Albert Lea	241	10	Freeborn
Alden	242	10	Freeborn
Alexandria	206	4	Douglas
Annandale	876	7W	Wright
Anoka-Hennepin	011	11	Anoka
Appleton	784	6W	Swift
Argyle	437	1	Marshall
Arlington	731	9	Sibley
Ashby	261	4	Grant
Atwater	341	6E	Kandiyohi
Audubon	021	4	Becker
Austin	492	10	Mower
Badger	676	1	Roseau
Bagley	162	2	Clearwater
Balaton	411	8	Lyon
Barnsville	146	4	Clay
Barnum	091	3	Carlton
Barrett	262	4	Grant
Battle Lake	542	4	Otter Tail
Beardsley	057	6W	Big Stone
Becker	726	7W	Sherburne
Belgrade-Elrosa	736	7W	Stearns
Belle Plaine	716	11	Scott
Bellingham	371	6W	Lac Qui Parle
Belview	631	8	Redwood
Bemidji	031	2	Beltrami
Benson	777	6W	Swift
Bertha-Hewitt	786	5	Todd
Big Lake	727	7W	Sherburne
Bird Island-Olivia	2534	6E	Renville
Blackduck	032	2	Beltrami
Blooming Prairie	756	10	Steele
Bloomington	271	11	Hennepin
Blue Earth - Winnebago	2148	9	Faribault
Borup	522	1	Norman
Braham	314	7E	Isanti
Brainerd	181	5	Crow Wing
Brandon	207	4	Douglas
Breckenridge	846	4	Wilkin
Brewster	513	8	Nobles

DISTRICT NAME	NUMBER	REGION	COUNTY
Brooklyn Center	286	11	Hennepin
Brooten	737	7W	Stearns
Browerville	787	5	Todd
Browns Valley	801	4	Traverse
Browntown	421	6E	McLeod
Buffalo	877	7W	Wright
Buffalo Lake - Hector	2159	6E	Renville
Burnsville	191	11	Dakota
Butterfield	836	9	Watsonwan
Byron	531	10	Olmsted
Caledonia	299	10	Houston
Cambridge - Isanti	911	7E	Isanti
Campbell - Tintah	852	4	Wilkin
Canby	891	6W	Yellow Medicine
Cannon Falls	252	10	Goodhue
Carlton	093	3	Carlton
Cass Lake	115	5	Cass
Centennial	012	11	Anoka
Ceylon	451	9	Martin
Chaska	112	11	Carver
Chatfield	227	10	Olmsted
Chisago Lakes	2144	7E	Chisago
Chisholm	695	3	St. Louis
Chokio-Alberta	771	4	Stevens
Clarissa	789	5	Todd
Clearbrook	161	2	Clearwater
Cleveland	391	9	LeSueur
Climax	592	1	Polk
Clinton - Graceville	055	6W	Big Stone
Cloquet	094	3	Carlton
Cold Spring	750	7W	Stearns
Coleraine	316	3	Itasca
Columbia Heights	013	11	Anoka
Comfrey	081	9	Brown
Cook County	166	3	Cook
Cosmos	461	6E	Meeker
Cromwell	095	3	Carlton
Crookston	593	1	Polk
Crosby - Ironton	182	5	Crow Wing
Cyrus	611	4	Pope
Danube	648	6E	Renville
Dassel - Cokato	466	6E	Meeker
Dawson	378	6W	Lac Qui Parle
Deer River	317	3	Itasca

DISTRICT NAME	NUMBER	REGION	COUNTY
Delano	879	7W	Wright
Delavan	218	9	Faribault
Detroit Lakes	022	4	Becker
Dilworth-Glyndon -Felton	2164	4	Clay
Dover - Eyota	533	10	Olmsted
Duluth	709	3	St. Louis
Eagle Bend	790	5	Todd
East Central	2580	7E	Pine
East Grand Forks	595	1	Polk
Echo	893	6W	Yellow Medicine
Eden Prairie	272	11	Hennepin
Eden Valley - Watkins	463	6E	Meeker
Edgerton	581	8	Pipestone
Edina	273	11	Hennepin
Elbow Lake	263	4	Grant
Elgin - Millville	806	10	Steele
Elk River	728	7W	Sherburne
Ellsworth	514	8	Nobles
Elmore	219	9	Faribault
Ely	696	3	St. Louis
Emmons	243	10	Freeborn
Erskine - McIntosh	2609	1	Polk
Esko	099	3	Carlton
Evansville	208	4	Douglas
Eveleth-Gilbert	2154	3	St. Louis
Fairmont	454	9	Martin
Faribault	656	10	Rice
Farmington	192	11	Dakota
Fergus Falls	544	4	Ottertail
Fertile - Beltrami	599	1	Polk
Fisher	600	1	Polk
Floodwood	698	3	St. Louis
Foley	051	7W	Benton
Forest Lake	831	11	Washington
Fosston	601	1	Polk
Franconia	323	7E	Chisago
Franklin	650	6E	Renville
Frazee - Vergas	023	4	Becker
Fridley	014	11	Anoka
Fulda	505	8	Murray
Gary	523	1	Norman
Gaylord	732	9	Sibley
GFW	2365	9	Sibley

DISTRICT NAME	NUMBER	REGION	COUNTY
Glencoe	422	6E	McLeod
Glenville	245	10	Freeborn
Gonvick	158	2	Clearwater
Goodhue	253	10	Goodhue
Goodridge	561	1	Pennington
Granada-Huntley	2536	9	Martin
- East Chain			
Grand Meadow	495	10	Mower
Grand Rapids	318	3	Itasca
Granite Falls	894	6W	Yellow Medicine
- Clarkfield			
Greenbush	678	1	Roseau
Grey Eagle	791	5	Todd
Grove City	464	6E	Meeker
Grygla - Gatzke	447	1	Marshall
Hallock - Humbolt	2359	1	Kittson
Halstad - Hendrum	2527	1	Norman
Hancock	768	4	Stevens
Harmony	228	10	Fillmore
Hastings	200	11	Dakota
Hawley	150	4	Clay
Hayfield	203	10	Dodge
Hendricks	402	8	Lincoln
Henning	545	4	Otter Tail
Herman-Norcross	264	4	Grant
Hermantown	700	3	St. Louis
Heron Lake - Okabena	330	8	Jackson
Hibbing	701	3	St. Louis
Hill City	002	3	Aitkin
Hills - Beaver Creek	671	8	Rock
Hinckley - Finlayson	2165	7E	Pine
Hoffman	265	4	Grant
Holdingford	738	7W	Stearns
Hopkins - Golden Vly	270	11	Hennepin
Houston	294	10	Houston
Howard Lake	880	7W	Wright
Hutchinson	423	6E	McLeod
International Falls	361	3	Koochiching
Inver Grove	199	11	Dakota
Isle	473	7E	Mille Lacs
Ivanhoe	403	8	Lincoln
Jackson	324	8	Jackson
Janesville - Waldorf	2835	9	Waseca
Pemberton			

DISTRICT NAME	NUMBER	REGION	COUNTY
Jasper	582	8	Pipestone
Jordan	717	11	Scott
Karlstad-Strandquist	2358	1	Kittson
Kasson-Mantorville	204	10	Dodge
Kelliher	036	2	Beltrami
Kensington	209	4	Douglas
Kenyon - Wanamingo	2172	10	Goodhue
Kerkhoven-Murdock	775	6W	Swift
Sunburg			
Kimball	739	7W	Stearns
Kingsland	2137	10	Fillmore
Kittson Central	2171	1	Kittson
LaCrescent	300	10	Houston
Lake Benton	404	8	Lincoln
Lake City	813	10	Wabasha
Lake Crystal - Welcome	2071	9	Blue Earth
Lake of the Woods	390	2	Lake of the Woods
Lake Park	24	4	Becker
Lake Superior	381	3	Lake
Lakefield	325	8	Jackson
Lakeville	194	11	Dakota
Lakeview	2167	8	Lyon
Lamberton	633	8	Redwood
Lancaster	356	1	Kittson
Lanesboro	229	10	Fillmore
Laporte	306	2	Hubbard
LeCenter	392	9	LeSueur
LeRoy	499	10	Mower
Lester Prairie	424	6E	McLeod
LeSueur Henderson	2397	9	LeSueur
Lewiston	857	10	Winona
Litchfield	465	6E	Meeker
Little Falls	482	5	Morrison
Littlefork - Big Falls	362	3	Koochiching
Long Prairie	792	5	Todd
Luverne	2184	8	Rock
Lyle	497	10	Mower
Lynd	415	8	Lyon
Mabel - Canton	238	10	Fillmore
Madelia	837	9	Watsonwan
Madison - Marietta	2153	6W	Lac Qui Parle
- Nassau			
Mahnomen	432	2	Mahnomen

DISTRICT NAME	NUMBER	REGION	COUNTY
Mahtomedi	832	11	Washington
Mankato	077	9	Blue Earth
Maple Lake	881	7W	Wright
Maple River	2135	9	Blue Earth
Marshall	413	8	Lyon
Martin County	2448	9	Martin
MACCRAV	2180	6W	Chippewa
McGregor	004	3	Aitkin
Medford	763	10	Steele
Melrose	740	7W	Stearns
Menahga	821	5	Wadena
Mesabi East	2711	3	St. Louis
Mentor	604	1	Polk
Middle River	440	1	Marshall
Milaca	912	7E	Mille Lacs
Milan	128	6W	Chippewa
Milroy	635	8	Redwood
Minneapolis	SP 1	11	Hennepin
Minneota	414	8	Lyon
Minnetonka	276	11	Hennepin
Minnewaska	2149	4	Pope
Montevideo	129	6W	Chippewa
Montgomery-Lonsdale	394	9	LeSueur
Monticello	882	7W	Wright
Moorhead	152	4	Clay
Moose Lake	97	3	Carlton
Mora	332	7E	Kanabec
Morgan	636	8	Redwood
Morris	769	4	Stevens
Morton	652	6E	Renville
Mounds View	621	11	Ramsey
Mountain Iron - Buhl	712	3	St. Louis
Mountain Lake	173	8	Cottonwood
Murray County	2169	8	Murray
Nashwauk-Keewatin	319	3	Itasca
Nett Lake	707	3	St. Louis
Nevis	308	2	Hubbard
New London-Spicer	345	6E	Kandiyohi
New Prague	721	11	Scott
New Ulm	088	9	Brown
New York Mills	553	4	Otter Tail
Newfolden	441	1	Marshall
Nicollet	507	9	Nicollet
North Branch	138	7E	Chisago
N St Paul-Maplewood	622	11	Ramsey

DISTRICT NAME NUMBER REGION COUNTY

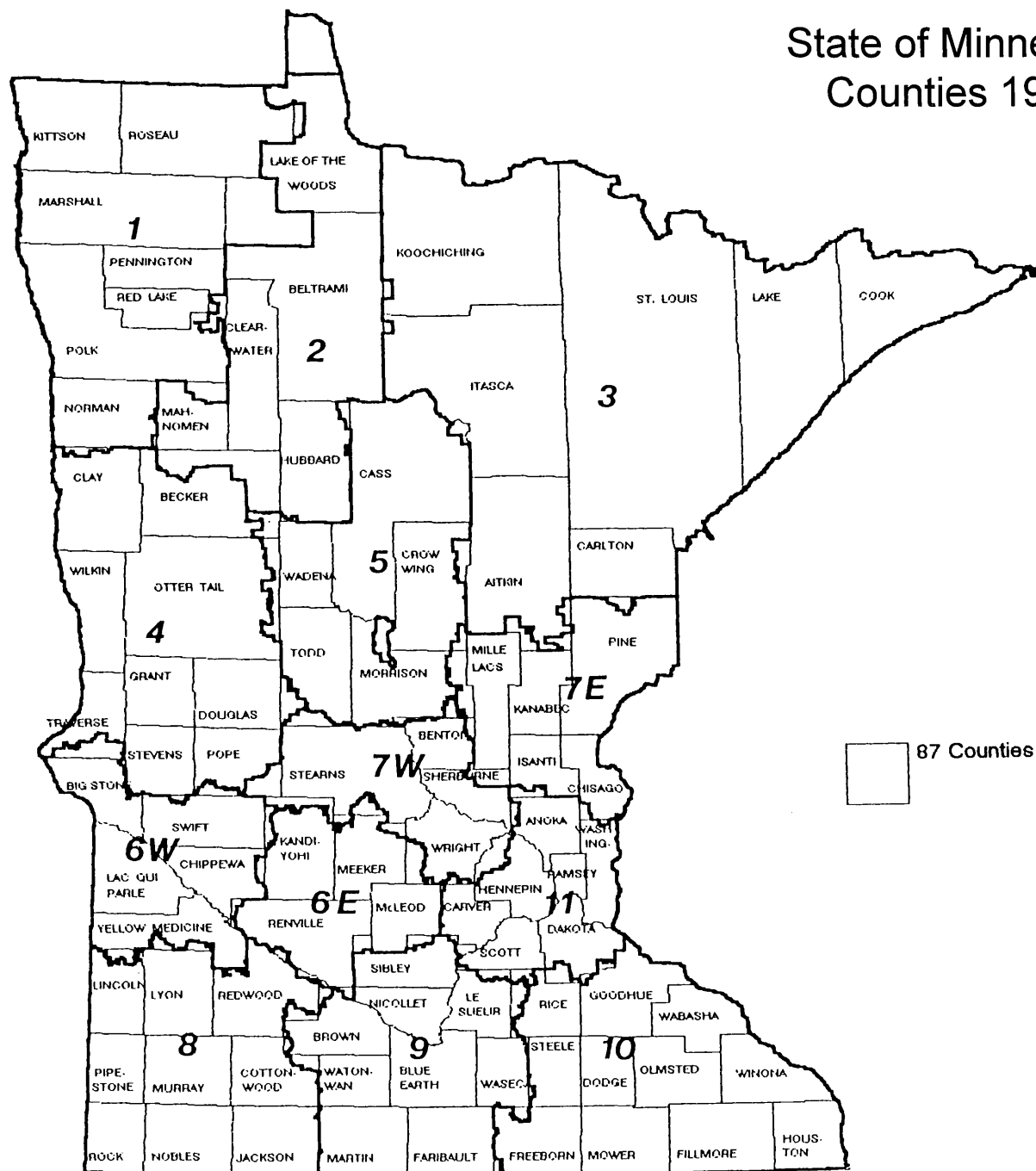
Northfield	659	10	Rice
Norwood - Young America	108	11	Carver
NRHEG	2168	9	Waseca
Ogilvie	333	7E	Kanabec
Oklee	627	1	Red Lake
Onamia	480	7E	Mille Lacs
Orono	278	11	Hennepin
Ortonville	062	6W	Big Stone
Osakis	213	4	Douglas
Osseo	279	11	Hennepin
Owatonna	761	10	Steele
Park Rapids	309	2	Hubbard
Parkers Prairie	547	4	Otter Tail
Paynesville	741	7W	Stearns
Pelican Rapids	548	4	Otter Tail
Pequot Lakes	186	5	Crow Wing
Perham	549	4	Otter Tail
Pierz	484	5	Morrison
Pillager	116	5	Cass
Pine City	578	7E	Pine
Pine Island	255	10	Goodhue
Pine Point	025	2	Becker
Pine River - Backus	2174	5	Cass
Pipestone	583	8	Pipestone
Plainview	810	10	Wabasha
Plummer	628	1	Red Lake
Preston-Fountain	233	10	Fillmore
Princeton	477	7E	Mille Lacs
Prinsburg	815	6E	Kandiyohi
Prior Lake	719	11	Scott
Proctor	704	3	St. Louis
Randolph	195	11	Dakota
Red Lake	038	2	Beltrami
Red Lake Falls	630	1	Red Lake
Red Wing	256	10	Goodhue
Redwood Falls	637	8	Redwood
Remer	118	5	Cass
Renville	654	6E	Renville
Richfield	280	11	Hennepin
Robbinsdale	281	11	Hennepin
Rochester	535	10	Olmsted
Rockford	883	7W	Wright
Roseau	682	1	Roseau

DISTRICT NAME NUMBER REGION COUNTY

Rosemount - Apple Valley - Eagan	196	11	Dakota
Roseville	623	11	Ramsey
Rothsay	850	4	Wilkin
Round Lake	516	8	Nobles
Royalton	485	5	Morrison
Rush City	139	7E	Chisago
Rushford - Peterson	239	10	Fillmore
Russell	418	8	Lyon
Ruthton	584	8	Pipestone
Sacred Heart	655	6E	Renville
St. Anthony - New Brighton	282	11	Hennepin
St. Charles	858	10	Winona
St. Clair	75	9	Blue Earth
St. Cloud	742	7W	Stearns
St. Francis	15	11	Anoka
St. James	840	9	Watonwan
St. Louis County	2142	3	St. Louis
St. Louis Park	283	11	Hennepin
St. Michael-Albertville	885	7W	Wright
St. Paul	625	11	Ramsey
St. Peter	508	9	Nicollet
Sanborn	638	8	Redwood
Sartell	748	7W	Stearns
Sauk Centre	743	7W	Stearns
Sauk Rapids	47	7W	Benton
Sebeka	820	5	Wadena
Shakopee	720	11	Scott
Silver Lake	425	6E	McLeod
Sioux Valley	328	8	Jackson
Sleepy Eye	84	9	Brown
South Koochiching	363	3	Koochiching
South St. Paul	SP6	11	Dakota
South Washington County	833	11	Washington
Southland	500	10	Mower
Spring Grove	297	10	Houston
Spring Lake Park	016	11	Anoka
Springfield	085	9	Brown
Staples - Motley	2170	5	Todd
Stephen	443	1	Marshall
Stewart	426	6E	McLeod
Stewartville	534	10	Olmstead
Stillwater	834	11	Washington

DISTRICT NAME NUMBER REGION COUNTY

Storden-Jeffers	178	8	Cottonwood
Swanville	486	5	Morrison
Thief River Falls	564	1	Pennington
Tracy	417	8	Lyon
Triton	2125	10	Dodge
Truman	458	9	Martin
Twin Valley	526	1	Norman
Tyler	409	8	Lincoln
Ulen-Hitterdal	914	4	Clay
Underwood	550	4	Otter
United South Central	2134	9	Faribault
Upsala	487	5	Morrison
Verdi	408	8	Lincoln
Verndale	818	5	Wadena
Virginia	706	3	St. Louis
Wabasha	811	10	Wabasha
Wabasso	640	8	Redwood
Waconia	110	11	Carver
Wadena - Deer Creek	2155	5	Wadena
Waldorf - Pemberton	913	9	Waseca
Walker-Akeley	113	5	Cass
Walnut Grove	641	8	Redwood
Warren-Alvarado-Olso	2176	1	Marshall
Warroad	690	1	Roseau
Waseca	829	9	Waseca
Watertown - Mayer	111	11	Carver
Waterville -Morristown	2143	9	LeSueur
Waubun	435	2	Mahnomen
Wayzata	284	11	Hennepin
West St. Paul	197	11	Dakota
Westbrook	175	8	Cottonwood
Westonka	277	11	Hennepin
Wheaton	803	4	Traverse
White Bear Lake	624	11	Ramsey
Willmar	347	6E	Kandiyohi
Willow River	577	7E	Pine
Windom	177	8	Cottonwood
Winona	861	10	Winona
Winsted	427	6E	McLeod
Worthington	518	8	Nobles
Wrenshall	100	3	Carlton
Zumbrota - Mazeppa	2805	10	Goodhue



**1994-95
School District Profiles**

**STATISTICAL
TABLES**

County Number and Name School District Name	District Number	1994-95 Resident Average Daily Membership					Pupil Data			Professional Staff		Tax Capacity Rates		Pupil Units (Weighted ADM)	
		1. Pre- Kindergarten Handicapped	2. Kindergarten	3. Elementary (Grades 1-6)	4. Secondary (Grades 7-12)	5. Total (Pre-K thru Grade 12)	6. Percent Minority	7. Percent Attendance	8. Percent Transported	9. Total Staff (FTE)	10. Pupil-Staff Ratio	11. Auditor Percent	12. Equalized Percent	13. Resident Pupil Units	14. Total Pupil Units
01 AITKIN															
AITKIN	1	15	80	618	693	1,406	2.3	95.3	84	95	14.5	50.56	43.33	1,616	1,585
HILL CITY	2	4	25	171	149	349	7.6	95.1	76	32	12.3	53.27	46.34	392	442
MCGREGOR	4	3	40	310	312	665	11.0	92.8	86	46	13.0	66.31	53.64	758	693
02 ANOKA															
ANOKA-HENNEPIN	11	314	3,065	18,474	16,398	38,251	6.2	94.2	82	2,365	15.8	61.40	56.55	42,898	42,174
CENTENNIAL	12	32	509	2,874	2,186	5,601	4.8	95.4	79	321	17.6	64.68	58.13	6,194	6,316
COLUMBIA HEIGHTS	13	22	228	1,445	1,417	3,112	14.0	92.1	63	232	12.7	77.73	73.53	3,518	3,394
FRIDLEY	14	14	184	1,179	1,118	2,495	8.3	94.0	82	179	14.7	69.94	65.53	2,815	3,036
SPRING LAKE PARK	16	21	323	1,888	1,827	4,059	5.6	93.4	80	251	16.4	58.94	54.76	4,572	4,715
ST. FRANCIS	15	30	423	2,543	2,246	5,242	3.4	93.7	91	346	15.1	65.52	57.20	5,874	5,908
03 BECKER															
AUDUBON (ICA)	21	2	29	170	157	358	3.7	95.8	71	27	14.0	56.04	47.07	403	390
DETROIT LAKES	22	32	212	1,309	1,335	2,888	12.0	93.4	71	221	13.3	61.47	55.33	3,274	3,361
FRAZEE	23	15	94	595	650	1,354	7.2	94.9	84	90	14.3	67.84	59.36	1,544	1,483
LAKE PARK (ICA)	24	2	17	169	227	415	2.5	94.6	89	27	13.3	65.28	56.40	485	470
PINE POINT (EXP)	25	1	6	57	9	73	100.0	85.7	75	9	6.2	.00	.00	76	59
04 BELTRAMI															
BEMIDJI	31	31	445	2,593	2,546	5,615	15.0	91.3	93	401	14.1	63.51	56.97	6,334	6,447
BLACKDUCK	32	6	61	375	357	799	9.7	94.3	85	60	15.2	72.14	64.13	901	1,028
KELLIHER	36		18	120	139	277	14.7	94.3	77	27	10.6	50.53	46.34	318	339
RED LAKE	38	10	126	684	427	1,247	100.0	89.9	66	88	12.2	81.78	79.98	1,360	1,178
05 BENTON															
FOLEY	51	10	131	770	916	1,827	1.3	94.3	89	117	16.0	59.69	55.39	2,093	2,138
SAUK RAPIDS	47	22	248	1,544	1,504	3,318	1.3	94.8	78	217	14.7	63.11	57.62	3,749	3,624
06 BIG STONE															
BEARDSLEY (ICA)	57		11	82	51	144	8.0	97.2	67	11	7.8	63.21	55.12	160	142
CLINTON-GRACEV'L (ICA)	55	3	36	260	236	535	2.3	96.3	71	44	12.5	62.60	54.90	604	634
ORTONVILLE (ASE)	62	5	37	272	323	637	2.2	96.0	64	57	13.6	49.70	42.84	733	901
07 BLUE EARTH															
LAKE CRYSTAL-WELLCOME	2071	11	77	541	628	1,257	3.3	93.5	77	92	13.0	55.52	49.85	1,447	1,382
MANKATO	77	51	512	3,466	3,342	7,371	5.4	93.6	63	470	15.8	59.67	53.28	8,353	8,467
MAPLE RIVER	2135	8	95	584	587	1,274	1.4	95.7	81	89	14.3	58.08	51.63	1,445	1,453
ST. CLAIR	75	6	25	270	258	559	.0	96.1	92	40	14.6	76.09	64.90	642	672
08 BROWN															
COMFREY	81	1	12	88	130	231	.0	96.3	80	22	10.3	58.95	49.99	270	264
NEW ULM	88	28	191	1,333	1,369	2,921	2.8	95.2	83	200	14.5	54.69	48.07	3,323	3,349
SLEEPY EYE	84	4	59	315	335	713	12.0	94.9	43	56	13.0	51.60	44.89	806	822
SPRINGFIELD	85	3	36	308	364	711	1.3	96.8	53	52	14.1	62.60	54.96	822	848
09 CARLTON															
BARNUM	91	3	50	316	354	723	3.4	94.6	93	48	14.7	67.64	53.10	825	806
CARLTON	93	2	77	347	385	811	11.2	92.9	92	54	14.7	64.05	55.40	912	902
CLOQUET	94	25	184	1,063	1,117	2,389	15.7	92.6	70	165	15.0	67.03	64.21	2,705	2,833
CROMWELL	95	1	16	134	158	309	.0	95.7	90	24	12.9	73.55	60.75	358	369
ESKO	99	4	97	443	475	1,019	1.1	95.6	94	67	15.5	67.98	60.50	1,143	1,183
MOOSE LAKE	97	4	56	349	386	795	1.7	95.3	92	61	13.5	62.33	52.67	908	944
WRENSHALL	100	2	19	186	180	387	4.4	94.9	87	35	12.1	56.98	53.05	443	487

District Number	Revenue %			1994 - 95 Expenditures per Pupil Unit																			Other Measures per Pupil Unit				
	15. Federal	16. State	17. Local and Other	18. District and School Admin.	19. District Support Services	20. Regular Instruction	21. Vocational Instruction	22. Exceptional Instruction	23. Instructional Support Services	24. Pupil Support Services	25. Operations and Maintenance	26. Food Service	27. Pupil Transpor- tation	28. Other Oper. Program	29. Total PK-12 Operating Expendi- tures	30. Community Service	31. Capital Outlay	32. Building Construction	33. Debt Service	34. Operating Funds Balance	35. Change in Funds Balance	36. State and Local Oper. Costs	37. Long Term Debt	38. 1993 Adj. Net Tax Capacity			
1	5 53	42		273	107	2079	95	542	210	163	470	189	294	67	4490	80	264	216	41	735	115	3842	434	3,994			
2	7 78	17		409	193	2353	82	703	201	97	396	237	358	118	5148	103	287	0	359	819	56	4284	22109	1,513			
4	7 49	44		418	148	2522	17	655	185	139	438	288	386	162	5357	92	442	0	456	443	44	4420	4662	4,467			
11	3 60	37		273	115	2177	120	735	179	179	323	232	250	100	4685	211	317	182	200	155	17-	4360	3390	2,503			
12	2 66	32		225	99	1960	71	863	243	114	322	170	231	68	4366	103	222	0	327	493	317	3791	3867	2,222			
13	4 37	59		391	183	2677	86	1170	391	181	495	307	264	134	6280	260	264	0	0	751-	293-	5437	13	4,637			
14	4 50	46		724	185	2351	230	1023	231	170	406	235	222	29	5807	266	169	0	3	545	63-	5188	280	3,950			
16	3 46	51		176	129	2232	131	787	301	181	391	191	291	122	4932	301	267	0	138	98	11-	4184	1145	4,334			
15	3 66	31		243	93	1997	74	1070	245	149	318	253	305	65	4811	128	464	1272	531	518	154	4174	11142	2,127			
21	9 46	45		385	97	1809	206	798	137	47	409	290	230	60	4469	123	724	0	287	630	34-	3580	248	4,387			
22	6 63	31		308	96	2207	62	788	211	151	330	187	386	32	4757	128	267	0	169	591	26-	3960	1737	2,567			
23	7 72	21		272	71	1952	200	693	198	88	274	182	384	78	4390	87	376	713	107	495	39	3601	1384	1,502			
24	2 56	42		395	101	1929	188	649	176	1	465	157	247	43	4352	108	232	0	359	575	91	3715	3318	3,365			
25	33 57	10		756	931	3917	0	2320	85	631	1633	754	194	360	11582	437	600	0	0	5686	118	8274	141	0			
31	7 66	27		250	73	2058	83	1029	202	108	428	223	278	296	5028	183	266	47	350	427	73	4241	4151	2,131			
32	6 72	22		328	128	2224	151	827	96	58	328	173	311	40	4663	117	155	786	467	779	43	3963	6835	1,335			
36	8 78	14		453	176	2629	775	769	134	30	459	277	450	283	6435	103	313	0	0	470	362-	5458	0	1,413			
38	28 69	3		453	338	3359	149	1316	489	68	906	326	499	231	8133	117	435	50	66	226	129-	5186	8320	19			
51	4 77	19		213	80	2098	72	547	181	88	268	206	205	111	4070	124	337	0	299	386	3	3490	6203	1,184			
47	3 64	33		226	81	2089	37	795	205	114	244	216	344	53	4404	165	282	2428	335	450	153	3638	4951	2,123			
57	7 55	38		327	218	2891	0	621	137	81	383	285	552	216	5689	293	441	0	0	11-	916-	4638	95	3,188			
55	6 54	40		351	94	2306	36	846	127	82	309	236	355	61	4802	119	355	0	7	221	128	4003	0	3,790			
62	4 67	29		290	179	1805	370	713	97	81	339	223	252	228	4578	216	460	0	32	94-	302	3943	217	1,919			
2071	4 64	32		323	147	2370	48	773	238	107	297	214	383	61	4962	126	353	0	0	252	38-	4233	100	2,714			
77	4 55	41		207	94	2131	77	715	202	128	382	189	215	48	4388	181	339	269	263	488	135	3833	2983	3,808			
2135	4 61	35		327	128	2032	66	535	133	63	390	199	316	96	4286	127	450	0	0	791	396	3625	21	3,085			
75	3 67	30		308	157	2241	0	809	301	20	510	233	416	64	5059	152	518	38	278	120-	276-	4286	3488	2,248			
81	5 44	51		331	240	2899	91	719	109	59	421	238	214	205	5528	102	543	0	0	207-	254-	4753	148	4,794			
88	3 65	32		260	71	2063	78	599	245	116	287	179	367	86	4352	146	289	0	11	663	174	3699	169	2,990			
84	4 55	41		353	124	2035	222	780	188	87	284	205	410	47	4735	216	242	0	259	688	22-	3835	254	4,483			
85	3 57	40		287	63	2076	161	434	162	74	227	208	250	40	3981	112	331	4067	537	927	234-	3405	6745	2,912			
91	4 75	21		367	116	2147	144	481	183	139	305	241	294	93	4508	176	514	0	729	691	94	3807	10100	1,314			
93	6 68	26		354	202	2084	16	549	158	108	378	175	343	169	4537	81	220	0	53	110-	428	3695	540	2,365			
94	9 59	32		311	168	2232	87	1005	170	172	352	170	290	70	5029	241	208	0	242	524	90	4146	3700	2,597			
95	4 69	27		359	295	1974	193	491	250	57	504	239	338	37	4736	116	749	0	838	568	203	3998	20923	2,295			
99	2 75	23		308	62	2200	111	644	158	118	285	113	226	97	4324	105	348	0	183	344	209	3887	1109	1,795			
97	3 68	29		332	115	2245	88	645	129	170	361	148	230	113	4575	93	325	0	424	556	120-	4063	6510	2,159			
100	3 61	36		328	202	2224	58	611	90	219	380	181	328	42	4664	115	257	0	18	547	359	4105	151	3,088			

County Number and Name School District Name	District Number	1994-95 Resident Average Daily Membership					Pupil Data			Professional Staff		Tax Capacity Rates		Pupil Units (Weighted ADM)	
		1. Pre- Kindergarten Handicapped	2. Kindergarten	3. Elementary (Grades 1-6)	4. Secondary (Grades 7-12)	5. Total (Pre-K thru Grade 12)	6. Percent Minority	7. Percent Attendance	8. Percent Transported	9. Total Staff (FTE)	10. Pupil-Staff Ratio	11. Auditor Percent	12. Equalized Percent	13. Resident Pupil Units	14. Total Pupil Units
10 CARVER															
CHASKA	112	36	474	2,737	2,188	5,435	4.1	93.6	90	328	16.3	71.22	63.74	6,040	6,035
NORWOOD	108	9	56	462	552	1,079	1.9	95.0	69	83	12.9	83.32	68.58	1,248	1,242
WACONIA	110	15	113	677	686	1,491	2.1	94.4	95	103	14.4	79.85	67.40	1,686	1,691
WATERTOWN-MAYER	111	13	93	593	665	1,364	1.5	93.3	94	89	15.2	76.28	61.41	1,557	1,543
11 CASS															
CASS LAKE	115	10	95	468	434	1,007	72.5	90.7	88	78	13.1	72.23	66.09	1,123	1,147
PILLAGER	116	7	47	316	287	657	2.5	91.8	83	42	14.3	51.15	42.10	743	693
PINE RIVER-BACKUS	2174	8	82	635	612	1,337	1.8	94.5	86	97	13.2	55.10	44.85	1,523	1,459
REMER	118	2	30	249	291	572	20.9	92.2	90	47	11.7	56.54	47.32	659	644
WALKER-AKELEY	113	4	76	535	459	1,074	16.9	93.4	78	81	12.2	54.47	44.61	1,210	1,119
12 CHIPPEWA															
M A C C R A Y	2180	7	60	482	497	1,046	5.6	95.7	88	80	12.9	66.42	57.98	1,196	1,183
MILAN (CSF)	128		14	111	110	235	8.8	96.3	75	9	25.2	68.58	53.09	268	210
MONTEVIDEO	129	8	89	708	809	1,614	3.5	93.5	57	129	13.4	74.57	66.14	1,859	1,990
13 CHISAGO															
CHISAGO LAKES	2144	15	233	1,598	1,428	3,274	1.9	92.3	95	196	16.4	59.18	51.61	3,693	3,660
FRANCONIA (NONOPER)	0323		2	12	13	27	.0	.0	100	0	.0	46.01	35.71	30	22
NORTH BRANCH	138	12	223	1,450	1,332	3,017	1.4	92.6	97	176	17.1	58.02	50.39	3,400	3,402
RUSH CITY	139	4	73	420	403	900	2.5	94.7	79	56	15.7	70.35	62.62	1,011	1,003
14 CLAY															
BARNESVILLE	146	4	55	371	411	841	1.5	95.6	62	53	15.4	69.62	60.98	962	943
DILWORTH-GLYNDON-FELT	2164	3	92	625	546	1,266	8.1	93.5	58	95	13.4	65.73	56.79	1,428	1,465
HAWLEY	150	6	54	357	389	806	.8	96.2	62	54	15.8	79.33	70.21	919	976
MOORHEAD	152	37	465	2,956	2,656	6,114	14.9	92.8	71	439	13.6	66.06	53.97	6,874	6,837
ULEN-HITTERDAL	914		33	171	186	390	3.6	94.3	76	28	12.8	80.01	70.09	440	420
15 CLEARWATER															
BAGLEY	162	9	70	589	589	1,257	15.5	93.3	93	83	14.8	59.26	54.93	1,438	1,439
CLEARBROOK (ICA)	161	4	25	181	177	387	5.3	94.2	100	27	12.8	54.46	51.90	439	465
GONVICK (ICA)	158	2	17	96	96	211	6.5	94.9	100	19	15.7	51.71	49.64	238	259
16 COOK															
COOK COUNTY	166	2	46	340	331	719	11.0	92.2	83	50	14.4	41.07	34.78	816	815
17 COTTONWOOD															
MOUNTAIN LAKE	173	1	34	266	290	591	23.7	94.9	41	45	12.9	52.41	44.02	680	676
STODEN-JEFFERS(ICA)	178	1	20	114	161	296	.4	95.8	81	21	12.1	58.18	50.27	341	332
WESTBROOK (ICA)	175		16	113	139	268	.0	94.0	74	22	12.0	61.49	55.47	310	313
WINDOM	177	6	78	567	549	1,200	4.8	95.6	67	92	13.2	68.37	59.41	1,366	1,399
18 CROW WING															
BRAINERD	181	54	471	3,138	3,303	6,986	2.1	94.8	92	465	15.4	66.95	58.72	7,934	8,224
CROSBY-IRONTON	182	13	109	828	797	1,747	1.5	93.5	82	108	15.1	56.66	48.22	1,988	1,868
PEQUOT LAKES	186	6	63	472	511	1,052	4.0	94.8	97	70	15.3	47.86	40.44	1,205	1,230

District Number	Revenue %			1994 - 95 Expenditures per Pupil Unit																	Other Measures per Pupil Unit				
	15. Federal	16. State	17. Local and Other	18. District and School Admin.	19. District Support Services	20. Regular Instruction	21. Vocational Instruction	22. Exceptional Instruction	23. Instructional Support Services	24. Pupil Support Services	25. Operations and Maintenance	26. Food Service	27. Pupil Transpor- tation	28. Other Oper. Program	29. Total PK-12 Operating Expendi- tures	30. Community Service	31. Capital Outlay	32. Building Construction	33. Debt Service	34. Operating Funds Balance	35. Change in Funds Balance	36. State and Local Oper. Costs	37. Long Term Debt	38. 1993 Adj. Net Tax Capacity	
112	2 56	42		297	137	2006	46	788	279	134	283	135	410	128	4644	150	717	3485	726	481	347	3980	11907	3,186	
108	3 54	43		348	89	1941	86	1009	166	103	396	193	223	82	4636	213	227	2856	586	310	39	4064	6612	3,375	
110	3 45	52		376	187	2229	157	814	209	164	438	210	424	27	5237	246	396	3300	741	779	88	4457	9240	4,455	
111	3 60	37		260	78	1826	83	706	200	90	293	217	302	98	4153	136	153	24	488	640	534	3498	3904	2,956	
115	14 57	29		513	155	2256	68	1377	408	93	500	307	495	141	6313	140	214	467	622	465	286	4639	13898	2,894	
116	5 40	55		330	114	2054	10	812	186	63	302	231	355	79	4537	232	298	22	447	713	22	3814	4570	5,250	
2174	6 55	39		284	172	2210	49	726	140	87	346	216	251	49	4529	87	339	0	284	490	46	3876	2533	3,779	
118	8 21	71		219	195	2561	92	1084	539	146	445	197	474	51	6002	148	795	189	113	498	228	4858	567	9,629	
113	7 37	56		237	126	2344	122	1129	255	112	316	263	309	65	5279	132	574	0	146	476	29	4410	314	6,249	
2180	4 58	38		317	170	2158	68	972	142	79	387	213	416	62	4984	111	341	482	6	854	454	4175	6139	3,449	
128	6 51	43		399	178	2005	161	679	211	154	505	211	390	286	5179	321	579	0	0	802	3	4202	72	3,119	
129	7 61	32		257	70	1985	313	817	134	34	309	455	207	64	4645	204	183	3660	298	809	151	3854	6011	2,012	
2144	2 69	29		236	144	1960	123	614	203	132	272	189	180	38	4090	170	245	40	287	418	178	3655	1036	2,242	
0323	0 65	35		0	136	4044	0	92	0	0	0	0	296	0	4568	0	0	0	0	613	178	4272	0	2,211	
138	3 74	23		231	147	1906	96	761	338	127	317	174	273	130	4499	114	375	33	249	294	116	3937	3417	1,741	
139	3 63	34		296	92	1950	99	587	179	41	266	244	162	66	3982	212	292	3	689	571	175	3450	9111	2,021	
146	5 59	36		350	73	2133	66	588	252	41	342	241	286	280	4653	181	242	0	537	294	281	3829	6065	2,647	
2164	4 68	28		269	95	2136	46	730	211	96	257	167	258	111	4378	150	732	3221	258	465	106	3786	4552	2,340	
150	2 75	23		271	114	2381	52	311	63	71	281	159	174	96	3973	154	275	0	1051	205	748	3510	861	1,356	
152	6 71	23		225	95	2027	42	1295	246	124	259	149	272	154	4888	131	269	242	143	410	11	4248	1364	2,452	
914	4 69	27		391	163	2123	208	867	139	70	438	219	259	81	4958	151	282	0	0	496	79	4346	56	2,416	
162	7 63	30		280	95	2126	86	886	300	99	283	204	298	103	4759	97	221	2518	405	456	113	3936	9710	2,226	
161	7 53	40		420	179	2123	12	467	194	93	309	206	406	95	4503	152	174	0	0	744	15	3699	77	3,972	
158	8 49	43		323	79	2327	110	477	146	93	413	295	468	73	4803	145	550	0	0	630	42	3854	1153	5,637	
166	6 26	68		394	111	2488	8	602	172	99	398	151	276	211	4909	129	275	0	0	727	14	4177	384	8,460	
173	5 51	44		415	64	2134	217	620	226	148	416	219	97	127	4685	263	293	0	0	628	561	4257	901	3,712	
178	6 36	58		458	165	2312	132	541	193	56	387	254	281	101	4880	41	483	0	0	876	620	4187	0	5,427	
175	2 46	52		448	148	2215	98	281	225	40	448	239	426	103	4671	131	415	0	0	474	818	3936	140	5,242	
177	4 53	43		319	209	2336	115	1250	126	121	396	225	195	157	5447	178	361	0	114	561	62	4870	975	3,090	
181	6 54	40		205	55	2044	208	827	246	83	308	207	277	63	4522	122	286	520	135	571	247	4084	3468	3,073	
182	4 46	50		193	88	2132	79	675	132	200	410	174	370	130	4583	80	230	5	639	206	192	3864	5884	4,135	
186	3 2	95		306	95	2126	51	497	149	84	303	210	234	45	4098	78	283	0	220	402	93	3570	627	10,600	

County Number and Name School District Name	District Number	1994-95 Resident Average Daily Membership					Pupil Data			Professional Staff		Tax Capacity Rates		Pupil Units (Weighted ADM)	
		1. Pre- Kindergarten Handicapped	2. Kindergarten	3. Elementary (Grades 1-6)	4. Secondary (Grades 7-12)	5. Total (Pre-K thru Grade 12)	6. Percent Minority	7. Percent Attendance	8. Percent Transported	9. Total Staff (FTE)	10. Pupil-Staff Ratio	11. Auditor Percent	12. Equalized Percent	13. Resident Pupil Units	14. Total Pupil Units
19 DAKOTA															
BURNSVILLE	191	86	961	5,470	4,445	10,962	11.4	93.5	88	736	14.9	80.92	75.54	12,185	12,417
FARMINGTON	192	37	286	1,637	1,333	3,293	1.6	95.0	95	202	16.0	75.77	68.76	3,672	3,649
HASTINGS	200	25	329	2,215	2,508	5,077	2.0	94.1	91	311	16.3	64.99	58.56	5,815	5,882
INVER GROVE	199	29	311	2,018	1,718	4,076	7.8	94.1	82	247	15.9	72.11	66.79	4,578	4,524
LAKEVILLE	194	36	661	3,466	2,627	6,790	2.9	95.2	92	449	15.0	71.74	64.30	7,485	7,497
RANDOLPH	195		30	159	198	387	1.9	95.9	84	34	11.0	75.47	65.62	442	435
ROSEMOUNT-APPLE VALLE	196	147	2,085	12,510	10,161	24,903	7.9	94.8	90	1,602	15.4	62.35	56.73	27,756	27,659
SOUTH ST. PAUL	SP6	24	229	1,538	1,551	3,342	8.4	92.3	69	199	17.7	77.70	73.77	3,802	4,071
WEST ST. PAUL-MENDOTA	197	47	374	2,368	1,984	4,773	15.1	94.3	90	322	14.7	63.66	57.04	5,345	5,441
20 DODGE															
HAYFIELD	203	8	76	465	491	1,040	1.3	95.2	73	74	14.2	51.59	46.07	1,181	1,200
KASSON-MANTORVILLE	204	11	126	772	737	1,646	1.8	94.6	96	107	15.3	56.89	49.49	1,857	1,861
TRITON	2125	12	79	629	590	1,310	2.8	93.6	81	82	14.9	58.18	52.42	1,491	1,408
21 DOUGLAS															
ALEXANDRIA	206	31	292	1,894	2,146	4,363	1.4	94.0	85	285	15.3	61.03	56.02	4,993	5,001
BRANDON	207	3	32	161	201	397	1.5	95.7	76	27	14.9	52.44	45.47	454	466
EVANSVILLE	208		18	153	155	326	.7	95.8	69	20	14.7	46.28	41.28	374	344
KENSINGTON (ICA)	209	1	8	71	91	171	2.7	95.9	82	17	13.0	65.62	48.64	199	184
OSAKIS	213	3	39	218	317	577	.3	94.8	82	44	14.3	73.19	66.46	667	734
22 FARIBAULT															
BLUE-EARTH (CSF)	2148	10	75	633	721	1,439	6.1	96.2	57	56	25.6	59.73	47.10	1,659	1,659
DELANA (CSF)	218	2	13	86	78	179	5.4	94.9	76	12	13.6	72.07	63.16	202	197
ELMORE (CSF)	219	4	12	66	94	176	4.9	95.2	60	9	18.0	67.89	57.98	203	201
UNT SOUTH CENTRAL (AS)	2134	12	82	516	632	1,242	4.4	95.7	62	86	13.6	63.42	58.53	1,427	1,359
23 FILLMORE															
HARMONY (ICA)	228	3	23	184	181	391	2.2	92.6	83	26	10.4	54.46	44.98	446	434
KINGSLAND	2137	10	70	466	501	1,047	.9	94.3	80	84	12.2	65.75	54.64	1,193	1,174
LANESBORO	229	3	24	161	193	381	1.2	95.2	72	32	13.2	65.11	52.35	438	493
MABEL-CANTON	238	2	25	178	193	398	2.2	96.4	77	32	12.4	70.48	59.98	454	461
PRESTON (ICA)	233	2	34	279	266	581	1.6	96.0	86	48	13.7	65.22	53.02	662	632
RUSHFORD-PETERSON	239	3	60	374	380	817	1.3	95.3	68	55	14.0	55.50	45.06	925	870
24 FREEBORN															
ALBERT LEA	241	30	328	2,016	1,927	4,301	7.5	94.1	70	277	15.3	61.96	56.38	4,854	4,823
ALDEN	242	1	23	143	171	338	2.5	96.4	77	30	13.5	52.19	50.15	388	470
EMMONS (ASE)	243	1	17	98	109	225	3.2	96.7	62	19	11.6	59.05	56.80	255	244
GLENVILLE (ASE)	245	2	27	178	192	399	3.4	95.5	74	36	10.6	74.63	72.32	456	452
25 GOODHUE															
CANNON FALLS	252	11	126	737	758	1,630	2.0	96.5	98	106	15.0	61.34	53.67	1,846	1,811
GOODHUE	253	1	27	214	269	511	.0	95.7	76	46	11.1	77.54	74.59	592	602
KENYON-WANAMINGO	2172	7	67	540	462	1,076	3.6	95.2	68	68	15.9	56.31	51.75	1,217	1,227
PINE ISLAND	255	7	66	497	473	1,043	2.7	95.8	77	80	14.8	66.38	60.54	1,184	1,345
RED WING	256	27	223	1,602	1,617	3,469	5.4	94.3	81	239	14.6	58.85	57.62	3,953	4,020
ZUMBROTA-MAZEPPA	2805	7	82	579	600	1,268	1.9	96.0	78	85	14.7	55.43	51.05	1,446	1,438
26 GRANT															
ASHBY	261	1	18	128	150	297	.6	96.7	87	22	15.3	59.47	50.13	341	381
BARRETT (ICA)	262	1	8	64	73	146	.0	60.0	91	4	.1	60.82	41.69	167	167
ELBOW LAKE (ICA)	263	1	29	242	234	506	.9	94.4	67	35	16.2	64.11	44.68	578	585
HERMAN-NORCROSS	264	2	14	106	133	255	2.2	94.8	53	22	10.5	74.02	65.65	293	265
HOFFMAN (ICA)	265	1	15	117	125	258	3.2	94.1	87	17	16.5	67.52	47.84	296	301

District Number	Revenue %			1994 - 95 Expenditures per Pupil Unit																		Other Measures per Pupil Unit				
	15. Federal	16. State	17. Local and Other	18. District and School Admin.	19. District Support Services	20. Regular Instruction	21. Vocational Instruction	22. Exceptional Instruction	23. Instructional Support Services	24. Pupil Support Services	25. Operations and Maintenance	26. Food Service	27. Pupil Transportation	28. Other Oper. Program	29. Total PK-12 Operating Expenditures	30. Community Service	31. Capital Outlay	32. Building Construction	33. Debt Service	34. Operating Funds Balance	35. Change in Funds Balance	36. State and Local Oper. Costs	37. Long Term Debt	38. 1993 Adj. Net Tax Capacity		
191	2 45	53		289	147	2419	133	979	188	169	486	184	256	117	5367	437	410	513	145	438	66	4844	3424	4,029		
192	3 66	31		262	171	1972	41	765	204	172	404	202	365	97	4655	109	403	3227	903	362	141	3961	12906	2,180		
200	3 59	38		337	51	2275	37	602	170	136	342	212	318	55	4535	161	157	0	185	503	221	3885	1806	3,059		
199	4 45	51		333	129	2219	17	939	177	199	363	218	235	112	4941	228	281	0	227	533	33	4304	2572	3,740		
194	2 53	45		347	112	2023	43	695	197	143	413	209	317	84	4584	214	333	510	1667	62	31	3956	12723	3,497		
195	3 49	48		412	135	3113	77	374	135	71	327	172	267	121	5206	181	146	0	0	639	204	4268	120	3,595		
196	2 55	43		235	107	2228	55	562	245	95	291	149	199	34	4199	133	252	906	696	190	61	3774	8584	3,342		
SP6	4 57	39		285	188	2021	16	819	225	170	380	215	276	294	4888	359	258	4	308	393	65	4228	4018	2,971		
197	3 7	90		323	101	2202	35	830	316	169	382	240	325	90	5012	209	710	1249	1199	62	159	4330	8134	9,076		
203	4 70	26		273	73	1935	106	638	222	77	297	245	333	101	4301	65	515	0	11	440	227	3572	281	2,161		
204	2 77	21		257	43	1930	72	594	186	115	248	176	204	127	3953	99	356	782	270	490	237	3449	6367	1,701		
2125	3 68	29		286	117	1956	3	705	148	59	294	228	231	139	4168	148	337	0	11	160	717	3524	11	2,366		
206	5 53	42		185	68	2143	63	704	162	168	318	206	204	82	4303	126	390	701	381	327	51	3705	4079	3,361		
207	6 75	19		275	66	2132	79	524	171	90	218	220	338	30	4142	60	253	0	143	766	146	3461	546	1,730		
208	6 70	24		381	121	1984	95	318	279	34	324	238	202	58	4034	106	174	0	0	642	42	3444	0	1,814		
209	3 72	25		338	176	2199	42	405	209	68	286	231	256	112	4321	209	591	0	0	54	325	3759	0	1,907		
213	6 66	28		322	80	2053	150	566	152	147	355	201	244	62	4330	100	182	0	479	27	238	3649	13398	2,262		
2148	4 61	35		217	51	2833	29	571	114	37	151	255	207	77	4541	249	799	0	4	87	311	4019	260	3,143		
218	6 33	61		430	189	3390	0	711	69	14	381	186	471	78	5919	554	308	0	0	266	724	5051	0	5,337		
219	5 47	48		235	250	2824	0	619	75	0	359	111	222	112	4808	254	629	0	0	822	431	4260	81	4,086		
2134	4 55	41		338	80	2353	51	777	183	133	368	231	316	89	4918	126	440	4	36	50	29	4215	529	3,344		
228	1 69	30		421	96	2213	72	476	239	80	335	173	277	117	4500	112	314	0	33	565	162	3944	39	2,791		
2137	5 72	23		341	83	2287	85	801	167	94	323	250	237	76	4742	142	541	0	12	457	273	4043	217	1,907		
229	6 71	23		334	114	2047	276	780	99	41	223	256	340	53	4562	226	267	0	282	0	925	3563	0	1,949		
238	8 63	29		316	132	2289	201	860	175	96	401	271	235	143	5119	133	447	0	1	223	12	4205	141	2,327		
233	7 72	21		382	116	2380	78	864	255	64	360	270	250	106	5126	106	128	0	430	686	413	4281	4557	1,657		
239	4 76	20		348	88	2060	106	679	138	59	332	265	294	93	4461	77	784	0	0	33	223	3787	167	1,800		
241	4 67	29		268	85	2146	70	796	142	169	367	180	247	192	4663	108	212	2	148	111	36	4055	1319	2,364		
242	4 62	34		378	106	2081	264	373	195	19	300	190	298	28	4232	78	251	0	0	336	70	3433	37	2,908		
243	4 63	33		464	180	2284	0	454	153	89	343	268	211	52	4499	109	280	0	8	562	20	3899	127	2,470		
245	4 61	35		340	169	2369	164	456	166	80	390	205	212	124	4674	65	259	0	0	4	359	4102	67	2,572		
252	2 65	33		241	80	2093	65	462	147	144	366	228	214	122	4164	143	272	0	463	665	524	3679	3483	2,697		
253	3 61	36		356	96	2127	154	549	231	95	286	231	403	88	4616	71	1103	1994	120	501	25	3823	3392	2,413		
2172	3 62	35		316	88	2302	81	424	138	49	325	277	370	97	4466	167	314	0	14	80	263	3786	399	2,739		
255	2 73	25		253	72	2115	120	493	131	120	267	175	171	111	4028	80	185	0	400	327	119	3566	5869	1,752		
256	3 15	82		259	80	2147	134	929	236	183	324	197	286	81	4856	236	222	4570	782	260	84	4215	8998	8,601		
2805	2 69	29		302	63	2150	208	745	237	67	322	232	258	46	4630	110	476	0	76	659	176	3870	742	2,029		
261	3 73	24		352	126	2006	104	517	383	21	298	194	220	101	4321	111	254	11	308	273	25	3789	1715	1,905		
262	21 58	21		347	181	2553	689	416	144	70	294	237	263	115	5309	209	165	0	0	942	848	4814	0	2,717		
263	4 54	42		332	173	2144	41	535	222	67	281	227	248	110	4381	205	436	0	0	116	437	3707	254	3,564		
264	4 41	55		592	94	2638	228	620	268	33	415	225	236	133	5483	210	889	0	18	903	1112	4816	98	5,127		
265	7 71	22		330	172	2144	41	664	204	66	279	225	247	109	4481	203	496	0	0	236	70	3732	0	2,423		

County Number and Name School District Name	District Number	1994-95 Resident Average Daily Membership					Pupil Data			Professional Staff		Tax Capacity Rates		Pupil Units (Weighted ADM)	
		1. Pre- Kindergarten Handicapped	2. Kindergarten	3. Elementary (Grades 1-6)	4. Secondary (Grades 7-12)	5. Total (Pre-K thru Grade 12)	6. Percent Minority	7. Percent Attendance	8. Percent Transported	9. Total Staff (FTE)	10. Pupil-Staff Ratio	11. Auditor Percent	12. Equalized Percent	13. Resident Pupil Units	14. Total Pupil Units
27 HENNEPIN															
BLOOMINGTON	271	55	810	5,330	5,365	11,560	14.8	94.6	95	654	17.3	59.30	55.68	13,125	13,204
BROOKLYN CENTER	286	8	148	724	624	1,504	32.7	92.8	72	103	17.3	76.86	76.48	1,666	2,033
EDEN PRAIRIE	272	48	771	4,474	3,389	8,682	5.8	95.6	100	555	15.6	67.24	61.92	9,613	9,769
EDINA	273	37	438	2,775	2,534	5,784	4.8	94.6	86	380	15.7	64.64	60.24	6,510	6,783
HOPKINS	270	42	536	3,646	3,394	7,618	8.3	94.2	95	566	13.8	75.08	69.37	8,610	9,081
MINNEAPOLIS	SP1	315	4,654	23,266	16,290	44,525	61.0	89.1	97	3,321	13.1	72.06	68.17	48,714	48,252
MINNETONKA	276	42	631	3,567	2,977	7,217	4.6	95.1	99	474	14.7	76.14	66.62	8,038	7,964
OROND	278	14	141	1,075	1,004	2,234	2.7	93.4	100	159	15.9	65.72	57.57	2,537	2,901
OSSEO	279	111	1,676	10,147	9,071	21,005	13.7	94.1	74	1,334	15.6	70.14	67.62	23,574	23,606
RICHFIELD	280	30	347	2,000	2,035	4,412	20.2	94.4	86	291	14.6	67.33	64.43	4,984	4,980
ROBBINSDALE	281	69	1,238	6,948	6,235	14,490	15.3	94.0	76	895	15.5	67.20	64.37	16,213	16,062
ST. ANTHONY-NEW BRIGH	282	3	63	457	429	952	12.0	94.5	87	86	13.6	65.79	62.57	1,079	1,327
ST. LOUIS PARK	283	48	365	2,128	1,903	4,444	11.8	94.2	84	294	14.5	71.21	66.44	4,981	4,907
WAYZATA	284	27	624	3,715	3,471	7,837	6.5	95.2	99	443	17.6	60.41	58.36	8,821	8,952
WESTONKA	277	13	175	1,236	1,230	2,654	4.3	94.5	90	162	14.5	66.44	58.53	3,016	2,724
28 HOUSTON															
CALEDONIA	299	2	62	427	506	997	1.5	96.1	60	75	13.2	62.86	50.48	1,145	1,145
HOUSTON	294	1	33	242	266	542	.4	95.5	69	37	13.8	66.48	55.44	621	601
LACRESSENT-HOKAH	300	8	91	600	716	1,415	2.0	94.8	75	99	15.0	59.25	48.82	1,626	1,719
SPRING GROVE	297	2	34	208	237	481	1.7	96.4	50	37	12.9	65.38	51.13	548	550
29 HUBBARD															
LAPORTE	306	3	21	134	135	293	7.4	93.4	100	29	13.6	64.41	53.14	332	443
NEVIS	308	2	13	151	186	352	1.3	94.0	100	34	13.3	68.53	58.11	412	529
PARK RAPIDS	309	21	131	912	923	1,987	6.5	94.4	90	141	14.0	59.26	51.61	2,260	2,257
30 ISANTI															
BRAHAM	314	9	31	508	530	1,078	1.2	94.1	84	70	14.8	74.41	65.78	1,254	1,211
CAMBRIDGE-ISANTI	911	34	290	2,153	1,971	4,448	2.7	92.5	87	284	16.2	54.68	45.55	5,037	5,242
31 ITASCA															
DEER RIVER	317	3	71	544	538	1,156	23.0	93.9	89	74	15.7	51.00	46.00	1,319	1,325
GRAND RAPIDS	318	29	334	2,112	2,459	4,934	5.1	93.0	95	326	15.3	52.80	48.63	5,648	5,822
GREENWAY	316	8	113	712	818	1,651	5.8	94.6	80	97	15.7	55.98	47.47	1,889	1,763
NASHWAUK-KEEWATIN	319	4	44	323	367	738	2.7	95.2	78	49	14.1	54.29	46.20	850	800
32 JACKSON															
HERON LAKE (ICA)	330	1	31	172	186	390	4.2	96.1	71	28	11.7	48.55	43.26	441	421
JACKSON	324	5	74	477	521	1,077	9.1	95.3	64	84	13.1	58.53	51.86	1,229	1,265
LAKEFIELD (ICA)	325	4	34	187	242	467	.4	95.0	48	37	13.0	58.46	51.91	535	519
SIoux VALLEY (ICA)	328	2	9	38	35	84	1.2	96.3	100	13	11.4	71.58	64.71	92	95
33 KANABEC															
MORA	332	9	139	926	921	1,995	3.1	94.9	78	128	15.3	58.91	52.43	2,262	2,227
OGILVIE	333	5	57	365	368	795	2.2	92.5	100	53	15.3	55.78	47.97	900	922
34 KANDIYOHI															
ATWATER (ICA)	341	1	34	282	311	628	2.2	95.7	62	40	13.5	76.57	54.42	723	643
NEW LONDON-SPICER	345	8	108	776	821	1,713	1.9	94.2	100	125	14.3	66.59	58.07	1,956	2,051
PRINSBURG (NONOPER)	0815		6	17	11	34	.0	.0	100	0	.0	50.34	45.36	35	35
WILLMAR	347	26	347	2,209	2,072	4,654	16.1	92.4	95	400	12.0	68.47	64.02	5,253	5,478
35 KITTSO															
KARLSTAD-STRANDQUIST	2358	1	33	183	236	453	.2	95.1	84	35	12.6	61.76	58.67	521	504
KITTSO CENTRAL	2171	5	38	271	258	572	4.5	95.5	63	49	11.3	71.79	68.06	649	625
LANCASTER	356	1	12	84	89	186	.5	95.7	77	19	11.2	90.30	84.43	212	247

District Number	Revenue %			1994 - 95 Expenditures per Pupil Unit																	Other Measures per Pupil Unit				
	15. Federal	16. State	17. Local and Other	18. District and School Admin.	19. District Support Services	20. Regular Instruction	21. Vocational Instruction	22. Exceptional Instruction	23. Instructional Support Services	24. Pupil Support Services	25. Operations and Maintenance	26. Food Service	27. Pupil Transpor- tation	28. Other Oper. Program	29. Total PK-12 Operating Expendi- tures	30. Community Service	31. Capital Outlay	32. Building Construction	33. Debt Service	34. Operating Funds Balance	35. Change in Funds Balance	36. State and Local Oper. Costs	37. Long Term Debt	38. 1993 Adj. Net Tax Capacity	
271	3	18	79	276	231	2099	90	890	275	184	356	217	250	148	5014	514	180	334	114	501	121-	4422	574	7,662	
286	4	57	39	227	158	1378	103	1122	661	122	377	222	162	153	4886	218	184	38	7	600-	539	4192	3184	4,361	
272	1	36	63	244	206	2174	66	715	261	116	410	189	234	56	4673	182	324	1099	867	545	160	4200	10236	6,319	
273	1	11	88	348	220	2525	27	675	310	144	599	148	254	113	5362	481	332	1076	600	463	418	4894	6098	9,652	
270	2	12	86	281	190	2549	83	1118	410	272	392	185	279	262	6022	419	217	2092	727	566	270	5442	7454	9,515	
SP1	7	41	52	473	262	2683	107	1594	253	272	462	249	486	295	7135	245	592	604	554	171	34	6060	1642	6,164	
276	1	32	67	275	223	2611	117	903	336	212	470	198	340	103	5787	323	277	42	717	570	28	5149	4028	5,950	
278	1	28	71	272	148	2336	101	735	218	115	386	196	382	212	5100	264	203	230	334	901	367	4377	4435	7,676	
279	2	54	44	288	215	2234	122	841	253	101	327	184	263	41	4869	157	225	1384	752	551	6	4334	7446	3,005	
280	3	31	66	431	166	2261	74	1043	226	279	562	189	203	151	5584	162	242	4596	377	432	114	5051	8590	6,471	
281	3	42	55	263	163	2308	209	940	237	203	456	206	273	149	5407	291	338	0	30	179	26	4804	0	4,628	
282	2	32	66	371	193	2852	55	668	220	167	494	68	151	237	5476	554	256	0	0	235-	129-	5566	798	6,761	
283	2	19	79	316	211	2471	65	1246	583	239	652	188	358	97	6426	609	218	264	336	760	90-	5767	3006	8,221	
284	4	24	72	451	339	2227	9	706	155	162	384	172	258	103	4968	275	297	596	684	211	344	4234	9860	7,488	
277	3	25	72	308	125	2366	82	809	139	217	502	222	257	218	5245	454	344	2662	441	12-	62-	4559	4895	6,139	
299	4	70	26	322	63	2073	96	790	207	95	310	253	344	106	4660	154	276	488	112	182	70	3897	743	2,167	
294	3	74	23	288	158	2150	10	411	62	92	316	210	246	318	4261	129	250	0	83	120	246	3708	578	1,782	
300	2	67	31	284	123	2287	57	523	141	96	309	195	328	63	4406	153	316	0	122	743	161	4023	692	2,110	
297	4	69	27	335	63	2358	44	482	118	93	301	241	265	81	4382	241	200	0	1512	498	26-	3761	1514	1,933	
306	6	71	23	422	41	1914	109	684	157	70	450	258	238	53	4397	90	340	0	232	1016	411	3683	3417	2,564	
308	5	54	41	305	113	2053	207	507	122	179	361	242	311	40	4440	112	413	2966	508	920	135	3743	8957	4,789	
309	6	53	41	300	123	1902	118	814	362	111	341	211	285	42	4611	144	449	0	0	84	24	3902	439	3,681	
314	4	74	22	294	112	2104	70	640	126	121	389	200	304	66	4427	70	476	876	918	730	434	3777	6722	1,276	
911	5	68	27	229	102	2090	216	822	138	148	319	174	183	49	4471	119	251	548	139	250	11	3863	1581	1,893	
317	10	65	25	294	102	2271	54	1095	276	187	369	226	469	69	5411	89	430	0	299	290	189-	4277	1040	3,198	
318	5	40	55	253	95	2333	123	940	218	120	395	162	312	119	5069	127	403	0	191	220	15	4370	2191	5,425	
316	4	69	27	286	313	2304	80	1222	237	149	471	163	289	69	5585	73	375	63	108	158-	139	4901	3389	1,350	
319	4	71	25	261	119	2058	130	1122	77	64	471	174	695	215	5385	104	739	0	0	1405-	202	4250	311	1,605	
330	4	46	50	232	209	2553	144	491	241	92	455	209	211	96	4933	158	441	0	6	1074	40-	4331	78	4,413	
324	4	58	38	316	63	2331	80	741	135	120	354	233	330	85	4787	177	689	0	289	300	221-	3941	1753	3,569	
325	4	53	43	305	82	2137	163	649	197	73	370	224	241	78	4518	270	410	0	5	469	129	3919	8	3,775	
328	10	13	77	558	539	1994	80	1183	188	15	821	530	387	123	6418	247	745	0	0	2745	105	4912	0	8,377	
332	4	70	26	250	87	1973	95	687	175	115	362	174	196	48	4161	173	189	2492	795	658	90-	3660	3957	1,572	
333	6	80	14	277	109	2189	97	568	127	151	368	271	238	70	4467	82	278	3	197	279	166-	3805	2542	885	
341	7	54	39	299	137	2200	41	1046	188	79	365	218	260	151	4982	113	220	0	0	654-	313-	4171	89	3,213	
345	3	62	35	249	120	2270	103	536	140	120	309	224	318	18	4407	142	371	114	766	321	130-	3790	9620	2,782	
0815	1	35	64	11	202	3285	0	2662	49	14	0	0	1362	25	7811	202	308	0	0	1124	1143	6147	0	12,988	
347	4	63	33	306	88	2367	199	1124	195	130	367	225	308	123	5432	157	457	856	335	3-	102-	4712	6609	2,433	
2358	4	56	40	361	34	2500	28	660	138	180	465	254	303	42	4965	122	402	0	423	630	29	4087	2525	3,372	
2171	2	18	80	627	80	2642	0	473	297	24	449	201	283	432	5507	107	568	0	0	104	237	4857	672	7,796	
356	4	52	44	479	106	3132	0	508	102	11	926	341	354	52	6011	90	473	0	149	727	82-	5220	400	3,497	

County Number and Name School District Name	District Number	1994-95 Resident Average Daily Membership					Pupil Data			Professional Staff		Tax Capacity Rates		Pupil Units (Weighted ADM)	
		1. Pre- Kindergarten Handicapped	2. Kindergarten	3. Elementary (Grades 1-6)	4. Secondary (Grades 7-12)	5. Total (Pre-K thru Grade 12)	6. Percent Minority	7. Percent Attendance	8. Percent Transported	9. Total Staff (FTE)	10. Pupil-Staff Ratio	11. Auditor Percent	12. Equalized Percent	13. Resident Pupil Units	14. Total Pupil Units
36 KOOSKICHING	361	8	112	777	927	1,824	7.1	91.5	92	114	15.8	60.57	55.36	2,098	2,085
INTERNATIONAL FALLS	362	3	26	164	188	379	.9	93.6	57	26	12.6	43.35	40.27	433	384
LITTLEFORK-BIG FALLS	363	1	22	136	161	320	.9	94.4	100	46	9.5	69.10	57.22	366	508
SOUTH KOOSKICHING															
37 LAC QUI PARLE															
BELLINGHAM (ASE)	371	1	10	88	77	176	1.1	97.4	86	12	8.0	61.45	55.98	199	170
DAWSON-BOYD	378	7	60	332	379	778	2.7	95.9	57	54	14.1	49.49	44.69	884	862
MADISON (CSF)	2153	4	44	299	319	666	.6	95.5	74	19	36.2	59.95	47.25	760	787
38 LAKE															
LAKE SUPERIOR	381	13	157	1,092	1,055	2,317	1.2	95.3	80	140	15.8	69.50	54.98	2,629	2,607
39 LAKE OF THE WOODS															
LAKE OF THE WOODS	390	4	60	396	379	839	2.1	94.3	97	58	14.3	68.52	60.30	952	948
40 LESUEUR															
CLEVELAND	391	3	33	231	266	533	1.4	95.0	66	37	13.7	71.87	59.36	612	586
LEGENTER	392	12	65	364	380	821	4.7	94.0	46	53	15.4	62.39	52.78	927	930
LESUEUR-HENDERSON	2397	20	103	641	731	1,495	6.2	93.6	65	91	15.7	75.48	63.71	1,708	1,632
MONTGOMERY-LONSDALE	394	8	76	498	573	1,155	4.8	95.3	73	75	15.2	62.08	51.77	1,322	1,321
WATERVILLE-ELYSIAN-MO	2143	11	86	510	584	1,191	2.3	95.0	76	90	12.5	60.63	50.51	1,358	1,301
41 LINCOLN															
HENDRICKS (ICA)	402	3	15	82	87	187	.7	97.0	78	23	12.0	60.43	55.54	210	227
IVANHOE (ICA)	403	2	17	149	185	353	.7	96.0	75	21	13.1	58.65	54.72	408	406
LAKE BENTON	404	2	23	121	147	293	.3	95.8	68	23	13.9	49.89	44.45	333	378
TYLER (ICA)	409	2	28	164	213	407	2.2	95.7	93	21	12.9	62.68	55.66	469	460
42 LYON															
BALATON	411	2	13	93	155	263	1.5	96.1	51	22	12.0	62.19	56.10	310	318
LAKEVIEW	2167	3	48	263	257	571	1.5	95.9	76	41	14.1	49.30	43.63	642	658
LYND (ASE)	415	1	15	95	128	237	22.6	96.1	53	11	10.8	64.14	53.36	274	219
MARSHALL (ASE)	413	9	151	984	1,037	2,181	7.9	95.4	76	152	15.4	50.93	45.48	2,484	2,682
MINNEOTA	414	5	53	193	319	570	1.5	95.3	69	42	14.3	57.51	48.42	652	703
RUSSELL (ICA)	418	1	12	99	103	215	1.5	97.0	92	16	12.4	52.37	47.34	246	242
TRACY	417	6	50	366	436	858	10.8	94.8	91	62	14.4	51.67	46.45	987	1,044
43 MCLEOD															
BROWNTON (ICA)	421	1	20	166	169	356	2.9	94.4	65	18	14.9	68.04	57.56	407	374
GLENCOE	422	9	105	686	707	1,507	7.5	94.4	76	89	15.9	54.20	44.66	1,713	1,713
HUTCHINSON	423	19	229	1,385	1,455	3,088	2.6	93.4	95	190	16.9	61.77	49.85	3,505	3,655
LESTER PRAIRIE (ASE)	424	2	31	234	222	489	.3	95.8	64	39	14.7	64.69	51.69	555	671
SILVER LAKE	425	1	33	132	198	364	3.8	96.3	72	20	21.1	62.90	51.51	416	368
STEWART (ICA)	426	1	15	121	149	286	1.9	95.8	66	22	14.5	68.75	57.34	330	305
WINSTED (ASE)	427	1	23	85	118	227	.0	96.8	45	12	10.8	66.96	53.04	256	207
44 MAHNOMEN															
MAHNOMEN	432	9	62	335	471	877	52.3	89.6	79	76	11.8	51.17	46.05	1,012	1,044
WAUBUN	435	8	47	287	315	657	54.0	91.9	78	55	11.5	64.91	56.41	749	730
45 MARSHALL															
ARGYLE	437	1	11	115	113	240	.4	96.4	56	23	11.2	64.01	57.29	275	302
GRYGLA	447	1	11	104	132	248	1.2	95.5	80	21	11.8	59.88	52.63	289	285
MIDDLE RIVER (ICA)	440		5	85	97	187	.9	96.5	87	19	12.3	83.84	74.28	219	215
NEWFOLDEN	441	1	26	177	211	415	.2	95.4	90	34	12.1	55.70	53.75	476	475
STEPHEN	443		17	136	140	293	7.0	95.4	41	24	11.8	53.66	47.60	335	328
WARREN-ALVARADO-OSLO	2176	4	51	388	426	869	9.5	94.9	42	64	12.5	64.15	56.97	998	924

District Number	Revenue %			1994 - 95 Expenditures per Pupil Unit																			Other Measures per Pupil Unit				
	15. Federal	16. State	17. Local and Other	18. District and School Admin.	19. District Support Services	20. Regular Instruction	21. Vocational Instruction	22. Exceptional Instruction	23. Instructional Support Services	24. Pupil Support Services	25. Operations and Maintenance	26. Food Service	27. Pupil Transporta- tion	28. Other Oper. Program	29. Total PK-12 Operating Expendi- tures	30. Community Service	31. Capital Outlay	32. Building Construction	33. Debt Service	34. Operating Funds Balance	35. Change in Funds Balance	36. State and Local Oper. Costs	37. Long Term Debt	38. 1993 Adj. Net Tax Capacity			
361	5 53	42		280	106	2121	64	700	131	160	477	184	197	215	4636	152	459	0	0	41-	96	3996	755	2,821			
362	4 72	24		483	204	2403	67	823	186	30	609	215	413	42	5477	112	373	86	0	640	421-	4687	142	1,393			
363	3 76	21		376	101	3102	4	496	355	147	1206	243	530	135	6696	36	903	1712	485	817	160-	5934	47179	1,266			
371	9 48	43		298	122	2759	0	1010	278	0	336	253	670	75	5801	206	476	0	40	65	673-	4528	261	3,041			
378	5 63	32		289	161	2136	100	647	194	129	390	269	182	71	4566	185	322	0	19	699	172	3955	769	2,809			
2153	5 65	30		271	132	1906	163	508	186	146	404	107	282	72	4176	156	213	0	0	362	230	3597	21	2,772			
381	3 57	40		346	69	2150	92	608	199	110	466	159	291	288	4778	168	393	206	59	196	711	4140	2296	2,715			
390	4 60	36		346	67	2120	0	542	159	92	391	304	365	153	4540	156	556	0	412	691	31-	3861	15192	2,163			
391	2 60	38		318	95	2066	115	655	142	61	256	170	225	32	4136	59	177	0	370	252	12	3670	2771	2,814			
392	4 71	25		335	81	1943	175	583	101	60	302	196	213	60	4048	120	321	0	113	261	81	3527	436	1,686			
2397	4 60	36		298	94	2039	90	663	166	139	320	191	192	116	4308	220	419	0	331	24	53	3734	2875	2,384			
394	4 71	25		232	104	1977	63	785	110	99	357	200	279	88	4294	188	124	398	555	392	312	3625	4972	2,207			
2143	5 67	28		307	111	2117	117	676	163	109	339	237	205	70	4450	99	444	0	100	357	30-	3857	421	2,428			
402	6 47	47		463	131	2142	245	880	119	169	449	435	261	111	5405	106	358	0	165	1510	1296	4467	428	3,914			
403	7 59	34		404	91	1737	193	761	101	114	298	219	221	54	4193	74	246	0	0	448	180	3516	14	2,719			
404	5 67	28		307	113	2340	168	429	50	40	344	280	293	116	4479	69	314	0	0	287	162	3810	0	2,979			
409	2 63	35		258	74	2138	365	267	125	33	298	167	425	100	4249	161	394	1555	66	730	1	3404	0	2,185			
411	4 55	41		324	130	2164	0	663	223	40	367	240	197	49	4396	140	251	0	0	367	106	3844	209	3,505			
2167	4 60	36		407	149	2248	140	484	125	46	311	238	218	94	4460	84	399	0	0	1116	263	3874	0	3,481			
415	4 61	35		284	158	2288	0	561	209	7	295	149	261	39	4249	127	476	0	0	385	49-	3731	0	2,308			
413	4 57	39		306	75	1964	63	726	148	123	439	228	275	4	4351	180	429	0	272	571	26	3675	2424	3,648			
414	4 66	30		244	146	1870	43	492	150	24	299	167	166	245	3844	97	258	0	32	465	151	3350	434	2,686			
418	3 50	47		361	102	2704	0	454	68	24	277	264	216	127	4597	95	196	0	0	104	423-	4124	0	3,632			
417	5 53	42		247	96	2139	139	737	177	95	359	227	207	36	4460	109	278	0	0	671	127	3839	60	3,436			
421	3 67	30		332	137	1848	97	545	110	142	297	126	362	61	4056	106	309	0	0	562	355	3380	281	2,256			
422	3 69	28		299	98	2036	44	638	104	153	319	228	242	73	4234	188	297	0	48	226	229	3658	35	2,347			
423	2 66	32		264	80	1982	82	539	195	93	365	200	303	102	4206	85	161	187	388	104	27	3605	4109	2,652			
424	3 76	21		305	158	2154	29	419	189	64	249	182	244	51	4044	87	257	0	244	220	90	3490	2843	1,795			
425	3 69	28		330	136	2279	1	494	93	28	302	312	462	140	4576	166	236	0	3032	210	92	3615	2147	2,058			
426	6 51	43		343	135	1909	98	697	113	157	350	219	327	155	4505	134	581	0	0	282-	88	3625	0	2,942			
427	4 33	63		400	184	2469	0	1420	69	29	236	16	319	130	5273	289	125	0	0	1727-	653-	4692	0	4,852			
432	16 68	16		389	105	2452	172	1160	212	88	442	279	380	215	5895	85	151	0	281	152-	5	4458	2968	1,914			
435	13 65	22		476	166	2444	143	1073	282	101	315	294	427	42	5762	57	129	0	0	74	91-	4406	76	2,166			
437	11 43	46		375	156	2309	0	821	156	168	369	235	411	62	5062	277	243	0	0	167	35-	3795	24	4,633			
447	5 74	21		310	121	2618	499	593	245	9	511	304	529	101	5841	55	688	3814	191	661	46	4747	4102	1,724			
440	6 64	30		851	93	2431	0	814	174	82	472	463	584	277	6242	106	953	0	106	495	125-	5000	283	1,462			
441	4 47	49		356	67	2371	81	649	122	68	426	234	293	58	4725	117	628	1218	0	699	471	4016	1227	5,016			
443	5 35	60		638	134	2374	0	455	171	183	545	252	224	55	5032	132	594	0	0	560	116-	4360	0	5,328			
2176	3 48	49		357	42	2335	8	747	99	67	463	207	191	375	4891	148	688	0	101	582	1	4363	225	3,848			

County Number and Name School District Name	District Number	1994-95 Resident Average Daily Membership					Pupil Data			Professional Staff		Tax Capacity Rates		Pupil Units (Weighted ADM)	
		1. Pre- Kindergarten Handicapped	2. Kindergarten	3. Elementary (Grades 1-6)	4. Secondary (Grades 7-12)	5. Total (Pre-K thru Grade 12)	6. Percent Minority	7. Percent Attendance	8. Percent Transported	9. Total Staff (FTE)	10. Pupil-Staff Ratio	11. Auditor Percent	12. Equalized Percent	13. Resident Pupil Units	14. Total Pupil Units
46 MARTIN															
CEYLON (ASE)	451	1	7	66	76	150	.0	94.7	41	6	6.9	69.02	71.50	175	112
FAIRMONT (ASE)	454	17	131	961	1,082	2,191	4.3	93.8	85	119	19.2	63.52	62.70	2,513	2,648
GRANADA HUNTLEY-EAST	2536	3	36	191	254	484	3.7	96.2	77	39	11.8	60.86	61.22	555	525
MARTIN CO. WEST (ASE)	2448	5	60	456	459	980	1.9	95.6	84	76	13.6	57.49	58.35	1,118	1,195
TRUMAN	458	3	31	220	262	516	.2	94.8	62	38	13.4	54.09	52.79	593	594
47 MEEKER															
COSMOS (ICA)	461	7	18	145	120	290	6.1	94.9	80	28	11.4	75.14	54.35	326	298
DASSEL-COKATO	466	8	135	971	919	2,033	1.9	95.1	100	130	16.3	55.22	47.10	2,303	2,408
EDEN VALLEY	463	10	74	371	463	918	.2	94.9	94	61	14.9	69.01	61.14	1,047	1,029
GROVE CITY (ICA)	464	4	25	188	159	376	1.7	95.0	78	24	12.1	82.11	60.29	423	376
LITCHFIELD	465	14	144	957	1,051	2,166	4.6	94.9	94	139	15.3	63.06	55.18	2,473	2,433
48 MILLE LACS															
ISLE	473	2	27	233	250	512	5.5	94.1	100	40	13.9	72.16	61.05	588	634
MILACA	912	13	119	768	814	1,714	4.5	93.6	78	109	15.1	61.99	54.61	1,951	1,899
ONAMIA	480	11	44	393	363	811	16.6	87.8	89	67	13.2	73.79	64.72	924	1,025
PRINCETON	477	28	177	1,381	1,388	2,974	3.2	93.7	84	184	15.8	63.83	55.15	3,395	3,334
49 MORRISON															
LITTLE FALLS	482	25	206	1,604	1,748	3,583	1.7	94.3	91	229	16.0	54.35	48.97	4,110	4,240
PIERZ	484	8	52	370	571	1,001	.9	94.3	92	77	12.8	54.19	49.69	1,171	1,177
ROYALTON	485	6	50	378	379	813	1.1	94.0	92	60	13.5	49.62	45.40	928	936
SWANVILLE	486	3	28	160	218	409	1.9	95.9	90	29	13.6	57.07	49.99	470	467
UPSALA	487	4	31	199	198	432	.5	95.1	94	34	12.6	60.67	54.84	489	486
50 MOWER															
AUSTIN	492	37	257	1,842	1,934	4,070	5.1	93.7	64	281	14.7	66.38	68.10	4,649	4,752
GRAND MEADOW	495	2	21	208	196	427	3.5	96.0	64	33	12.8	65.18	61.27	488	490
LERDY	499	1	36	213	213	463	.0	96.3	58	33	13.4	71.64	63.76	522	505
LYLE	497	3	21	121	148	293	.0	94.8	56	23	12.1	58.70	54.59	335	324
SOUTHLAND	500	6	65	245	327	643	2.3	95.2	95	52	12.9	73.04	69.09	726	761
51 MURRAY															
FULDA	505	4	36	245	297	582	2.6	96.7	66	50	12.3	62.87	56.21	669	705
MURRAY COUNTY	2169	6	63	464	455	988	.1	96.6	80	72	13.4	57.60	51.20	1,124	1,112
52 NICOLLET															
NICOLLET	507	4	26	169	226	425	.0	95.0	65	33	13.7	78.39	69.61	492	516
ST. PETER	508	24	109	886	960	1,979	3.1	92.7	73	122	16.5	67.19	57.45	2,271	2,339
53 NOBLES															
ADRIAN	511	5	52	251	261	569	.8	96.8	69	43	14.2	54.92	49.10	639	684
BREWSTER (ICA)	513	2	15	120	124	261	6.0	96.7	76	10	13.4	50.00	44.75	299	296
ELLSWORTH	514	2	8	124	109	243	2.7	97.7	43	18	9.8	62.35	55.55	280	210
ROUND LAKE (ICA)	516	2	13	88	73	176	1.7	95.1	85	20	11.6	69.69	62.58	197	204
WORTHINGTON	518	14	138	1,093	1,252	2,497	18.7	94.3	83	174	14.4	59.23	52.24	2,875	2,897
54 NORMAN															
ADA (ASE)	521	2	36	204	263	505	5.4	95.1	63	43	13.3	67.72	61.76	579	669
BORUP (ASE)	522	1	6	37	68	112	6.5	95.3	96	9	7.2	56.86	51.00	131	134
GARY (ICA)	523	1	6	75	77	159	11.1	95.3	64	19	13.1	86.39	78.35	184	140
HALSTAD-HENDRUM	2527	1	31	188	181	401	10.7	94.0	97	38	12.6	57.21	50.92	452	536
TWIN VALLEY (ICA)	526	2	30	163	175	370	11.2	92.7	87	22	10.2	81.86	73.59	418	408

District Number	Revenue %			1994 - 95 Expenditures per Pupil Unit																			Other Measures per Pupil Unit				
	15. Federal	16. State	17. Local and Other	18. District and School Admin.	19. District Support Services	20. Regular Instruction	21. Vocational Instruction	22. Exceptional Instruction	23. Instructional Support Services	24. Pupil Support Services	25. Operations and Maintenance	26. Food Service	27. Pupil Transpor- tation	28. Other Oper. Program	29. Total PK-12 Operating Expendi- tures	30. Community Service	31. Capital Outlay	32. Building Construction	33. Debt Service	34. Operating Funds Balance	35. Change in Funds Balance	36. State and Local Oper. Costs	37. Long Term Debt	38. 1993 Adj. Net Tax Capacity			
451	4	23	73	420	314	3264	0	759	44	1	481	295	587	112	6276	271	217	0	0	421-	911-	5375	256	4,384			
454	3	62	35	206	81	1924	105	696	276	92	384	228	282	72	4204	258	480	158	5	399	360	3764	783	2,336			
2536	4	39	57	344	141	2625	0	602	155	38	307	305	314	100	4930	173	686	38	0	337	331-	4228	42	4,427			
2448	4	39	57	380	119	2189	161	608	124	72	407	223	242	87	4612	154	631	0	1	1028	203	4024	79	5,075			
458	4	53	43	308	117	2073	86	627	78	55	356	215	394	63	4373	101	335	0	0	1068	355	3640	19	3,481			
461	4	59	37	409	131	1966	41	617	173	67	337	335	353	185	4613	91	267	0	0	198	104-	3960	262	3,149			
466	3	69	28	246	49	1899	73	606	203	100	344	184	262	101	4068	129	326	284	435	666	110	3526	5286	1,798			
463	4	72	24	319	127	1974	115	730	108	63	356	239	345	75	4451	145	299	0	428	417	39-	3757	4757	1,675			
464	2	69	29	355	153	2118	41	834	174	84	339	244	494	406	5242	114	100	0	0	98-	277	4444	129	1,767			
465	3	65	32	299	126	2168	29	605	161	70	308	174	311	159	4408	152	360	2231	173	503	55-	3794	3494	2,260			
473	6	53	41	388	148	2236	36	519	123	37	523	306	234	52	4602	94	455	0	406	604	1	3881	3045	3,624			
912	5	74	21	243	105	1995	95	753	143	91	313	166	326	135	4365	146	196	0	352	293	241	3644	4754	1,354			
480	9	52	39	272	92	2363	33	967	153	166	351	212	255	40	4904	95	384	19	585	645	97	4011	6750	3,041			
477	3	72	25	297	123	1898	132	549	219	132	330	214	355	146	4395	157	240	237	287	265	137	3656	3472	1,735			
482	4	75	21	292	93	1834	252	882	206	76	387	211	393	89	4715	127	357	20	170	251	69-	3945	1923	1,566			
484	8	73	19	303	86	1888	206	942	179	142	246	195	382	47	4616	133	368	0	381	725	17	3685	4583	1,391			
485	7	76	17	361	118	2119	142	632	162	69	270	229	180	23	4305	79	289	0	203	222	321-	3696	811	1,659			
486	5	77	18	352	77	2358	84	619	122	65	318	237	330	106	4666	80	175	0	419	222	353	3906	2082	1,483			
487	6	76	18	366	160	2141	342	814	219	57	302	215	216	92	4925	129	524	0	0	404-	215-	4164	279	1,105			
492	5	60	35	289	140	1924	162	1012	231	82	446	204	209	345	5045	146	267	86	433	147	76	4548	5883	2,171			
495	3	63	34	311	194	2046	102	545	132	68	362	243	185	75	4263	132	876	0	10	704	144	3748	13	2,350			
499	4	57	39	213	185	2098	273	476	89	212	247	212	196	120	4320	311	317	0	193	666	393	3776	640	2,538			
497	6	68	26	354	98	2085	0	550	369	9	353	247	159	100	4323	77	370	0	24	783	169	3731	18	2,077			
500	6	55	39	378	134	2084	177	676	201	179	360	221	510	128	5048	117	308	748	194	122-	25	3978	4664	3,416			
505	6	55	39	352	132	2075	260	628	152	87	428	207	325	80	4725	288	696	0	35	33-	198-	4012	770	3,398			
2169	6	64	30	400	130	2224	72	850	158	103	411	229	543	209	5329	114	363	0	20	356	413	4358	164	3,227			
507	3	57	40	313	198	2412	108	389	227	310	548	234	444	79	5261	155	353	0	906	667	11-	4448	6855	3,431			
508	3	63	34	293	84	1955	28	979	177	119	316	150	261	65	4425	95	231	0	296	267	320	3847	2892	2,183			
511	7	62	31	390	70	2221	37	478	145	70	324	225	413	28	4400	99	304	0	179	70-	214-	3549	1169	2,833			
513	5	60	35	452	123	2016	126	426	309	115	292	149	301	48	4357	235	290	0	0	548	465-	3774	0	3,179			
514	5	48	47	379	172	2805	0	597	91	8	404	253	240	178	5125	162	141	0	0	299	218	4335	121	3,089			
516	2	49	49	503	274	2138	107	719	164	20	458	289	303	72	5046	160	681	0	0	896	490	4388	12	4,290			
518	4	57	39	285	131	1941	115	1479	407	81	330	234	272	163	5437	170	574	0	172	173	66	4767	1126	2,954			
521	4	54	42	215	35	2183	593	595	109	17	229	219	461	69	4725	85	160	0	192	518	98-	3870	224	3,652			
522	4	38	58	251	275	2709	113	522	78	7	277	212	582	186	5211	233	194	0	0	807	53-	4306	0	6,910			
523	8	52	40	569	128	3476	159	991	93	13	977	549	622	282	7859	153	346	30	423	561	2171	6286	412	2,790			
2527	9	55	36	456	57	2175	346	938	175	106	492	269	400	97	5512	74	299	0	187	855	5	4402	1517	4,183			
526	3	71	26	384	33	1845	326	539	55	20	238	186	430	189	4245	198	214	0	33	529	803	3492	9133	1,627			

County Number and Name School District Name	District Number	1994-95 Resident Average Daily Membership					Pupil Data			Professional Staff		Tax Capacity Rates		Pupil Units (Weighted ADM)	
		1. Pre- Kindergarten Handicapped	2. Kindergarten	3. Elementary (Grades 1-6)	4. Secondary (Grades 7-12)	5. Total (Pre-K thru Grade 12)	6. Percent Minority	7. Percent Attendance	8. Percent Transported	9. Total Staff (FTE)	10. Pupil-Staff Ratio	11. Auditor Percent	12. Equalized Percent	13. Resident Pupil Units	14. Total Pupil Units
55 OLMSTED															
BYRON	531	9	102	640	622	1,373	1.5	95.5	65	91	14.9	65.45	55.63	1,553	1,527
CHATFIELD	227	5	52	403	428	888	.4	96.2	66	63	14.6	56.64	47.07	1,018	1,056
DOVER-EYOTA	533	4	54	381	407	846	.7	96.2	84	67	13.9	68.64	59.37	966	1,054
ROCHESTER	535	68	1,185	7,480	6,316	15,049	11.8	94.7	72	948	15.7	66.06	59.12	16,849	16,741
STEWARTVILLE	534	2	130	873	723	1,728	1.6	95.6	81	112	15.6	62.08	54.20	1,936	1,963
56 OTTER TAIL															
BATTLE LAKE	542	5	32	262	255	554	3.2	94.3	87	37	13.9	53.05	43.87	631	593
FERGUS FALLS	544	20	198	1,520	1,662	3,400	2.1	92.0	78	219	15.6	59.35	54.36	3,900	3,960
HENNING	545	2	17	229	232	480	2.2	94.9	73	37	12.2	77.97	65.50	554	522
NEW YORK MILLS	553	4	38	309	351	702	.3	94.6	90	48	14.8	78.71	70.37	808	814
PARKERS PRAIRIE	547	5	50	285	286	626	.9	95.2	86	43	15.7	56.78	48.66	707	769
PELICAN RAPIDS	548	3	90	601	607	1,301	5.8	94.7	74	88	14.3	56.18	47.87	1,477	1,446
PERHAM	549	2	119	725	842	1,688	3.3	95.0	86	117	14.5	68.49	58.01	1,932	1,943
UNDERWOOD	550	3	24	175	208	410	1.8	95.5	92	31	14.0	45.71	37.39	471	500
57 PENNINGTON															
GOODRIDGE	561		16	86	129	231	2.0	93.0	100	21	11.4	71.28	61.58	266	279
THIEF RIVER FALLS	564	9	147	1,033	1,111	2,300	3.8	91.3	80	163	14.1	73.89	65.83	2,627	2,652
58 PINE															
EAST CENTRAL	2580	3	71	453	527	1,054	8.6	93.1	85	104	11.2	66.11	57.84	1,207	1,367
HINCKLEY-FINLAYSON	2165	3	87	557	559	1,206	6.7	94.3	84	82	14.6	60.93	52.03	1,368	1,380
PINE CITY	578	7	114	786	823	1,730	1.6	94.7	93	112	15.5	56.48	48.85	1,973	1,994
WILLOW RIVER	577	1	39	256	271	567	2.4	95.0	84	39	13.6	73.74	64.89	645	607
59 PIPESTONE															
EDGERTON	581	1	10	99	147	257	.4	97.1	66	24	11.3	45.54	38.62	303	317
JASPER (ICA)	582	2	16	119	93	230	3.8	96.7	57	8	12.5	62.57	53.75	257	219
PIPESTONE (ICA)	583	17	106	680	612	1,415	5.6	93.9	55	95	15.4	54.04	47.13	1,590	1,598
RUTHON (ICA)	584	1	17	99	87	204	2.9	96.8	73	27	12.3	71.07	63.68	228	228
60 POLK															
CLIMAX	592	1	12	57	99	169	4.8	94.2	82	20	9.2	72.40	63.92	197	224
CROOKSTON (ASE)	593	1	113	816	972	1,902	11.9	94.1	65	138	13.8	68.68	63.25	2,191	2,207
EAST GRAND FORKS	595	7	180	1,007	934	2,128	15.6	93.8	59	157	13.9	49.47	45.17	2,385	2,463
FERTILE (ASE)	599	2	36	230	275	543	2.4	95.5	86	52	12.7	59.68	53.89	622	768
FISHER	600	1	22	111	93	227	8.3	94.3	84	21	11.5	65.24	57.87	252	266
FOSSTON	601	2	46	314	369	731	4.7	94.8	77	49	15.2	64.48	59.13	839	856
MENTOR (ASE)	604		15	88	81	184	2.5	97.0	98	6	12.6	54.84	49.85	207	206
WIN-E-MAC (ASE)	2609	1	32	232	256	521	2.4	95.4	79	38	13.3	63.87	58.76	596	587
61 POPE															
CYRUS (ASE)	611		15	61	69	145	6.6	96.5	98	11	9.9	64.17	57.62	162	180
MINNEWASKA	2149	7	110	882	898	1,897	1.7	95.8	85	133	13.8	69.31	62.38	2,168	2,112
62 RAMSEY															
MOUNDS VIEW	621	64	834	5,564	5,421	11,883	8.1	93.9	89	735	16.3	65.03	62.27	13,460	13,698
N. ST. PAUL-MAPLEWOOD	622	68	836	5,029	4,528	10,461	7.3	93.2	80	582	18.1	75.22	71.18	11,741	11,982
ROSEVILLE	623	33	529	3,141	2,895	6,598	12.5	93.9	94	446	14.9	74.17	73.72	7,408	7,538
ST. PAUL	625	293	3,935	20,897	15,627	40,752	51.8	90.9	74	2,860	14.0	66.68	63.41	44,924	44,429
WHITE BEAR LAKE	624	54	681	4,679	4,260	9,674	3.6	93.8	81	601	16.0	72.68	67.40	10,926	10,962
63 RED LAKE															
OKLEE	627		17	115	152	284	2.3	95.0	76	22	13.5	55.74	53.40	329	339
PLUMMER	628	1	6	82	115	204	.0	96.2	89	20	10.5	74.32	71.95	240	246
RED LAKE FALLS (ASE)	630	1	18	184	295	498	4.9	94.3	90	39	13.0	69.19	63.87	589	607

District Number	Revenue %			1994 - 95 Expenditures per Pupil Unit																	Other Measures per Pupil Unit				
	15. Federal	16. State	17. Local and Other	18. District and School Admin.	19. District Support Services	20. Regular Instruction	21. Vocational Instruction	22. Exceptional Instruction	23. Instructional Support Services	24. Pupil Support Services	25. Operations and Maintenance	26. Food Service	27. Pupil Transpor- tation	28. Other Oper. Program	29. Total PK-12 Operating Expendi- tures	30. Community Service	31. Capital Outlay	32. Building Construction	33. Debt Service	34. Operating Funds Balance	35. Change in Funds Balance	36. State and Local Oper. Costs	37. Long Term Debt	38. 1993 Adj. Net Tax Capacity	
531	2	70	28	301	77	2072	31	693	169	124	306	228	215	67	4283	171	541	0	406	105	49	3781	4744	1,992	
227	2	70	28	387	106	2095	99	507	140	80	293	185	261	78	4229	103	382	0	0	374	76	3669	87	2,146	
533	3	73	24	308	94	2024	77	630	308	104	304	221	168	42	4280	119	256	0	727	646	172	3796	11570	1,706	
535	3	45	52	218	110	2121	93	808	351	137	373	175	346	126	4858	227	258	89	1164	631	148	4469	1592	4,209	
534	2	73	25	261	58	2114	84	586	202	123	278	239	277	62	4283	167	272	0	186	335	91	3750	466	1,658	
542	6	31	63	268	109	2047	201	649	101	21	296	211	319	32	4254	132	485	0	0	59	321	3519	33	6,964	
544	3	63	34	266	62	2051	80	807	166	139	318	142	287	81	4398	125	243	1201	157	574	0	3796	1802	2,486	
545	4	55	41	251	124	2367	239	730	217	79	354	138	246	42	4787	92	514	7563	510	235	77	4213	8477	2,660	
553	5	74	21	310	161	2199	360	690	124	18	352	265	220	79	4779	137	617	0	517	328	101	4045	8946	1,184	
547	6	73	21	276	131	2123	133	649	236	111	273	197	413	56	4598	81	564	214	286	405	165	3698	4763	1,630	
548	4	59	37	261	54	2161	84	459	112	56	302	163	334	67	4053	56	257	824	164	671	4	3443	1099	3,342	
549	5	58	37	239	167	1895	132	697	174	144	314	213	359	52	4385	139	263	3038	560	592	119	3662	6177	3,014	
550	4	74	22	308	298	2261	127	481	186	63	287	233	212	60	4515	141	446	0	0	836	81	3830	196	1,930	
561	7	75	18	428	192	2191	313	840	219	10	436	339	457	179	5604	53	1109	0	0	593	41	4671	120	1,752	
564	5	70	25	328	118	2047	148	795	244	89	409	196	211	124	4708	134	441	2082	589	261	30	4097	8773	1,877	
2580	6	60	34	357	55	1988	115	1625	189	98	321	207	286	120	5359	96	342	0	266	392	55	4607	3712	1,866	
2165	5	63	32	319	95	2049	50	569	161	102	352	234	219	32	4183	94	457	0	336	779	746	3599	2509	2,526	
578	5	66	29	302	146	2225	98	617	198	228	295	183	351	81	4725	89	143	0	291	707	72	3984	1025	2,263	
577	4	70	26	231	101	1953	35	686	149	208	343	212	379	48	4343	73	78	79	656	456	145	3649	5928	2,033	
581	6	55	39	365	82	2613	59	844	141	49	388	207	670	48	5465	165	126	0	0	2183	46	3984	0	4,625	
582	3	32	65	592	54	3913	46	559	431	22	330	173	419	122	6660	144	1181	0	0	1349	969	5987	38	4,105	
583	5	66	29	225	31	2237	101	789	203	100	334	193	347	133	4693	213	177	0	22	670	123	3943	34	2,388	
584	15	43	42	407	115	3119	0	2079	131	55	442	374	442	140	7304	107	285	0	0	1452	63	5470	0	2,754	
592	5	35	60	709	322	2601	96	624	121	128	405	296	449	70	5820	43	418	0	0	204	508	4913	0	5,586	
593	5	63	32	301	109	2123	187	740	191	97	360	250	129	132	4619	134	332	173	43	302	84	4014	6466	2,483	
595	5	72	23	279	131	2142	155	578	207	135	392	219	185	88	4512	110	451	0	39	465	64	3974	314	2,342	
599	4	66	30	356	30	1959	336	665	174	80	302	245	345	101	4594	57	303	0	449	415	56	3880	6125	2,229	
600	3	37	60	485	195	2340	3	544	255	71	345	245	330	71	4884	137	414	0	0	683	562	4201	193	6,445	
601	5	73	22	371	87	1794	338	626	170	79	358	216	254	181	4474	161	263	0	379	518	301	3746	1069	1,636	
604	5	48	47	191	73	2556	0	376	9	5	211	125	501	258	4303	35	143	0	0	203	188	3528	0	4,740	
2609	5	61	34	345	115	2264	75	558	107	13	378	201	241	94	4393	108	614	0	5	694	102	3778	77	2,251	
611	4	62	34	128	184	2877	0	771	108	4	288	187	304	133	4982	515	298	0	0	5	328	4310	0	2,719	
2149	5	62	33	223	151	2317	125	553	139	93	328	273	315	70	4587	113	314	0	1304	700	2	3832	10259	2,117	
621	2	41	57	172	152	2413	138	735	180	213	425	195	261	162	5046	232	225	388	265	101	23	4469	2734	4,728	
622	3	42	55	261	124	2283	65	835	234	157	275	218	214	167	4834	266	326	767	54	407	104	4310	7584	4,417	
623	3	26	71	337	198	2506	97	909	532	203	468	194	255	187	5884	364	415	1829	288	616	312	5316	6790	5,852	
625	9	53	38	242	220	2223	76	1394	272	330	499	240	286	239	6021	263	272	793	205	325	23	5092	5029	3,970	
624	2	52	46	304	65	2069	109	736	283	89	330	197	180	407	4769	242	361	1051	283	518	150	4293	5841	3,329	
627	4	63	33	369	144	2277	128	433	96	3	457	248	279	71	4504	127	527	0	138	889	475	3835	696	3,107	
628	7	60	33	488	97	2295	227	738	48	3	422	267	302	48	4934	144	697	0	0	494	183	4110	0	2,462	
630	7	68	25	515	75	2196	101	451	139	297	448	237	236	86	4781	141	458	0	22	613	295	3883	258	1,338	

County Number and Name School District Name	District Number	1994-95 Resident Average Daily Membership					Pupil Data			Professional Staff		Tax Capacity Rates		Pupil Units (Weighted ADM)	
		1. Pre- Kindergarten Handicapped	2. Kindergarten	3. Elementary (Grades 1-6)	4. Secondary (Grades 7-12)	5. Total (Pre-K thru Grade 12)	6. Percent Minority	7. Percent Attendance	8. Percent Transported	9. Total Staff (FTE)	10. Pupil-Staff Ratio	11. Auditor Percent	12. Equalized Percent	13. Resident Pupil Units	14. Total Pupil Units
64 REDWOOD															
BELVIEW (ICA)	631	2	12	86	78	178	.0	97.2	65	12	9.8	63.90	56.48	202	181
LAMBERTON (ICA)	633	2	15	139	137	293	1.1	94.2	82	21	12.5	49.26	42.61	335	334
MILROY (ASE)	635		14	87	100	201	.0	97.8	84	14	10.2	53.02	46.07	231	234
MORGAN (ICA)	636	7	23	94	219	343	2.3	95.2	63	22	14.1	60.26	53.33	403	401
REDWOOD FALLS (ASE)	637	6	70	547	584	1,207	5.2	94.4	91	85	16.0	65.78	58.68	1,384	1,576
SANBORN (ICA)	638	1	10	93	102	206	.8	97.1	69	20	12.2	49.72	42.76	237	219
WABASSO	640	3	29	166	273	471	.0	95.2	75	38	12.0	54.08	47.59	550	537
WALNUT GROVE (ICA)	641	2	17	117	135	271	2.2	95.4	60	22	10.7	55.55	49.10	310	267
65 RENVILLE															
BIRD ISLAND-OLIVIA-LA	2534	17	79	443	543	1,082	5.7	94.5	99	85	13.0	51.37	46.44	1,240	1,274
BUFFALO LAKE-HECTOR	2159	4	41	307	308	660	4.4	95.3	82	49	13.6	51.21	46.09	751	763
DANUBE (ICA)	648		16	138	143	297	9.0	95.7	76	23	14.7	47.02	42.88	340	313
FRANKLIN (ICA)	650	1	14	78	47	140	1.8	96.9	67	13	13.5	60.74	53.63	152	156
MORTON (ASE)	652	1	24	122	123	270	55.2	93.5	73	11	9.7	59.14	53.22	302	241
RENVILLE (ICA)	654	2	30	215	225	472	7.4	93.8	84	26	13.2	52.36	46.71	539	546
SACRED HEART (ICA)	655	1	28	125	109	263	15.4	95.1	75	23	15.1	57.09	51.78	293	286
66 RICE															
FARIBAULT	656	23	246	2,017	2,000	4,286	6.0	93.6	75	295	14.3	86.80	75.69	4,895	4,905
NORTHFIELD	659	11	247	1,565	1,644	3,467	3.9	95.9	88	239	14.7	61.52	53.83	3,943	4,040
67 ROCK															
HILLS-BEAVER CREEK	671		22	184	222	428	2.7	96.6	84	31	13.1	71.59	60.64	495	485
LUVERNE	2184	10	95	653	665	1,423	3.6	95.9	59	106	14.0	54.26	45.25	1,619	1,690
68 ROSEAU															
BADGER	676	1	14	112	114	241	.0	94.5	58	21	11.0	101.36	87.07	276	271
GREENBUSH (ICA)	678	3	24	177	213	417	.0	94.6	71	28	13.1	55.61	48.33	481	480
ROSEAU	682	11	126	668	633	1,438	1.0	94.9	83	87	16.6	70.04	57.72	1,616	1,628
WARROAD	690	12	145	748	657	1,562	8.9	93.8	71	103	15.2	66.82	56.73	1,740	1,747
69 ST. LOUIS															
CHISHOLM	695	4	59	463	517	1,043	4.7	93.9	66	68	15.3	59.26	52.15	1,202	1,207
DULUTH	709	60	1,019	6,417	6,341	13,837	8.5	94.3	71	987	14.0	67.22	59.89	15,667	15,795
ELY	696	5	49	378	398	830	5.2	94.0	58	57	16.1	58.33	41.94	951	1,067
EVELETH-GILBERT	2154	4	108	712	798	1,622	3.3	94.6	74	116	14.1	46.75	39.78	1,858	1,891
FLOODWOOD	698	1	18	167	154	340	1.9	95.5	79	27	13.0	72.73	68.08	388	406
HERMANTOWN	700	7	140	838	783	1,768	2.6	95.9	100	112	16.6	66.16	58.08	1,991	2,113
HIBBING	701	21	198	1,348	1,768	3,335	2.0	94.0	80	230	15.1	52.23	46.59	3,861	4,053
MESABI EAST	2711	9	92	556	777	1,434	2.0	93.9	78	86	15.9	49.95	44.10	1,659	1,622
MOUNTAIN IRON-BUHL	712	6	51	376	443	876	2.1	95.1	79	51	13.9	26.19	23.02	1,011	837
NETT LAKE(ASE)	707		6	37	40	83	100.0	93.4	75	10	4.1	120.01	96.85	94	88
PROCTOR	704	9	139	964	1,075	2,187	1.2	95.2	84	132	16.4	62.16	52.96	2,503	2,499
ST. LOUIS CO. (ASE)	2142	15	203	1,506	1,693	3,417	10.4	94.6	81	239	12.7	50.74	42.57	3,927	3,545
VIRGINIA	706	8	127	824	982	1,941	4.1	94.5	100	150	14.6	66.62	57.96	2,230	2,557

District Number	Revenue %			1994 - 95 Expenditures per Pupil Unit																	Other Measures per Pupil Unit				
	15. Federal	16. State	17. Local and Other	18. District and School Admin.	19. District Support Services	20. Regular Instruction	21. Vocational Instruction	22. Exceptional Instruction	23. Instructional Support Services	24. Pupil Support Services	25. Operations and Maintenance	26. Food Service	27. Pupil Transpor- tation	28. Other Oper. Program	29. Total PK-12 Operating Expendi- tures	30. Community Service	31. Capital Outlay	32. Building Construction	33. Debt Service	34. Operating Funds Balance	35. Change in Funds Balance	36. State and Local Oper. Costs	37. Long Term Debt	38. 1993 Adj. Net Tax Capacity	
631	5	48	47	390	108	2282	0	450	202	11	394	206	385	74	4502	31	435	0	0	630	903	3761	1	3,447	
633	2	53	45	318	105	2338	183	430	112	65	369	256	257	88	4521	207	144	0	0	114	320-	3920	102	4,076	
635	4	56	40	314	126	2605	0	409	157	62	303	202	249	124	4552	83	233	0	0	300	7	3984	0	3,838	
636	4	49	47	230	147	1728	74	678	123	84	344	185	356	77	4027	49	247	0	248	1074	953	3283	1300	4,396	
637	3	57	40	314	103	2185	33	588	158	106	281	234	256	25	4282	128	272	0	519	782	399	3693	10823	2,716	
638	11	42	47	467	53	2492	55	934	188	67	386	387	255	116	5400	126	325	0	0	32	233-	4270	291	4,034	
640	6	45	49	204	107	2105	106	1186	232	79	269	216	236	73	4813	102	266	0	26	197-	62	4111	11	4,497	
641	9	36	55	430	169	2189	61	669	184	59	451	275	222	58	4765	72	458	0	0	596	5	3889	88	4,532	
2534	4	59	37	281	107	2169	84	701	141	73	320	186	310	60	4431	172	280	0	18	868	106	3780	74	3,408	
2159	4	51	45	294	102	2229	54	645	132	116	409	185	226	58	4450	98	328	0	0	554	205-	3897	337	4,234	
648	8	49	43	299	83	1680	0	783	196	51	316	241	398	77	4124	92	173	0	0	704	464	3225	23	3,876	
650	4	44	52	461	196	1740	40	860	127	79	575	366	230	95	4769	121	420	0	62	430-	20-	4087	115	5,331	
652	16	53	31	519	129	3479	0	1088	87	162	264	182	324	57	6291	408	70	0	0	1025-	1053-	4994	132	2,334	
654	3	51	46	332	81	2014	100	547	169	36	327	118	195	90	4009	137	377	0	0	737	253	3520	22	3,945	
655	7	56	37	355	91	2078	0	815	187	36	341	340	193	78	4514	72	788	0	0	715	280	3781	55	3,351	
656	4	61	35	229	129	2294	80	1270	262	77	373	236	316	35	5300	154	326	151	417	89	74-	4548	9048	2,512	
659	2	61	37	294	175	2103	38	730	253	136	325	196	328	93	4672	195	357	0	186	738	120	4065	1201	3,004	
671	4	57	39	344	116	2244	178	617	99	38	328	286	192	135	4576	87	194	0	33	566	178	3974	199	3,242	
2184	5	66	29	221	84	2059	79	635	180	176	314	175	216	76	4214	197	196	0	5	658	165	3625	67	2,722	
676	4	62	34	289	168	2789	75	467	159	16	415	242	255	433	5307	84	172	0	186	986	137-	4524	3489	1,844	
678	5	69	26	158	63	2699	126	607	281	34	570	248	407	150	5343	52	838	0	0	451	90-	4272	366	2,116	
682	3	72	25	213	98	1959	74	655	246	51	417	160	309	84	4269	165	192	1564	472	531	237	3586	10467	1,946	
690	4	65	31	293	112	2048	95	509	147	196	427	205	294	58	4386	161	357	1	961	267	194	3595	14579	2,157	
695	3	69	28	317	120	2124	35	620	207	58	561	114	147	340	4644	121	333	34	346	139	505	4211	4627	1,248	
709	6	67	27	309	225	1892	189	1003	363	236	422	150	258	263	5311	268	443	464	316	290-	81-	4683	5232	2,556	
696	4	57	39	277	242	2285	14	580	164	82	528	147	166	140	4624	96	295	0	195	532	30	4152	4221	2,802	
2154	4	69	27	297	117	2254	117	717	281	116	530	153	248	165	4994	93	218	0	265	621	99	4407	2444	1,546	
698	3	53	44	471	178	2304	77	666	206	88	394	265	303	45	4996	140	388	2503	39	589	103	4337	10127	4,309	
700	2	59	39	300	151	1938	34	462	191	145	369	163	243	113	4109	125	337	0	475	475	137	3627	3984	3,322	
701	4	68	28	293	94	2090	32	664	218	124	541	150	257	291	4755	176	392	0	185	394	304	4179	4506	1,855	
2711	3	58	39	305	114	2158	178	794	183	89	588	131	254	479	5272	117	207	0	14	169-	89	4689	3505	2,171	
712	4	46	50	398	123	2160	319	957	111	64	543	153	474	278	5580	148	249	0	920	662	253	4564	3344	2,213	
707	21	68	11	1314	810	3809	0	3064	788	496	588	369	403	175	11798	209	472	71145	0	1700	2125	8320	69871	15	
704	3	73	24	263	74	2214	31	505	162	90	343	151	258	130	4220	124	241	0	398	567	390	3703	2982	2,024	
2142	5	47	48	249	100	2714	0	893	239	104	505	179	407	136	5527	86	462	0	415	650	56	4715	2120	4,002	
706	3	60	37	241	106	2192	156	945	174	95	531	148	148	241	4975	83	441	1991	315	563	26-	4514	7786	1,926	

County Number and Name School District Name	District Number	1994-95 Resident Average Daily Membership					Pupil Data			Professional Staff		Tax Capacity Rates		Pupil Units (Weighted ADM)	
		1. Pre- Kindergarten Handicapped	2. Kindergarten	3. Elementary (Grades 1-6)	4. Secondary (Grades 7-12)	5. Total (Pre-K thru Grade 12)	6. Percent Minority	7. Percent Attendance	8. Percent Transported	9. Total Staff (FTE)	10. Pupil-Staff Ratio	11. Auditor Percent	12. Equalized Percent	13. Resident Pupil Units	14. Total Pupil Units
70 SCOTT															
BELLE PLAINE	716	2	102	442	526	1,072	1.1	95.3	71	70	15.2	76.78	61.89	1,212	1,221
JORDAN	717	6	76	446	581	1,109	.9	93.9	80	62	18.2	71.62	60.59	1,277	1,307
NEW PRAGUE	721	13	139	991	1,063	2,206	.6	97.6	80	128	17.4	63.68	52.54	2,523	2,564
PRIOR LAKE	719	26	288	1,852	1,674	3,840	1.2	94.4	92	220	16.8	66.14	55.16	4,325	4,209
SHAKOPEE	720	25	208	1,366	1,342	2,941	6.2	92.7	69	206	14.5	71.18	64.63	3,336	3,434
71 SHERBURNE															
BECKER	726	9	134	696	600	1,439	1.3	95.5	92	105	14.4	34.46	33.84	1,601	1,699
BIG LAKE	727	8	148	832	684	1,672	2.0	93.8	85	114	13.9	66.43	57.99	1,861	1,803
ELK RIVER	728	33	525	3,494	3,356	7,408	2.8	94.3	94	481	15.4	59.51	53.79	8,397	8,473
72 SIBLEY															
ARLINGTON (ICA)	731	4	59	321	379	763	2.3	93.2	89	39	16.0	72.00	61.05	872	849
G.F.W.	2365	4	93	471	530	1,098	1.7	95.5	86	71	15.0	51.38	44.24	1,242	1,217
GAYLORD (ICA)	732	7	47	281	280	615	8.5	95.8	79	52	13.8	60.40	52.97	695	702
73 STEARNS															
ALBANY	745	9	93	749	814	1,665	1.0	96.5	95	116	14.1	67.57	61.02	1,911	1,893
BELGRADE (ICA)	736	9	35	266	279	589	.0	94.1	85	33	13.3	88.12	81.24	673	629
BROOTEN (ICA)	737	4	30	171	174	379	5.2	95.8	83	34	14.3	92.10	83.17	429	429
COLD SPRING	750	8	133	826	1,134	2,101	1.1	95.8	90	144	15.4	64.13	56.63	2,431	2,563
HOLDINGFORD	738	7	66	528	551	1,152	.7	95.2	83	75	15.5	53.96	47.65	1,319	1,340
KIMBALL	739	9	57	416	494	976	1.6	95.0	91	65	15.0	54.28	48.52	1,124	1,122
MELROSE	740	18	99	545	837	1,499	.4	96.0	92	97	15.7	64.82	58.47	1,741	1,778
PAYNESVILLE	741	11	97	628	642	1,378	1.4	96.0	98	95	15.0	70.02	62.67	1,565	1,621
SARTELL	748	10	113	984	1,007	2,114	1.6	95.4	93	144	15.2	66.09	61.07	2,424	2,517
SAUK CENTRE	743	16	53	365	751	1,185	1.0	96.1	74	81	14.5	73.99	67.04	1,407	1,420
ST. CLOUD	742	115	779	5,340	5,182	11,416	3.9	93.6	80	721	15.7	61.80	56.97	12,945	12,946
74 STEELE															
BLOOMING PRAIRIE	756	2	63	448	486	999	10.6	95.9	55	75	13.1	62.46	56.78	1,142	1,132
MEDFORD	763	2	30	214	261	507	2.5	95.3	48	42	12.5	45.93	40.42	584	605
OWATONNA	761	40	309	2,190	2,056	4,595	3.4	94.9	66	286	16.0	60.94	54.85	5,203	5,213
75 STEVENS															
CHOKIO-ALBERTA	771	2	12	146	158	318	1.0	97.0	79	30	10.2	69.98	61.37	368	356
HANCOCK	768	3	19	142	158	320	2.6	94.6	60	19	15.8	61.48	54.78	366	347
MORRIS (ASE)	769	7	55	499	591	1,152	4.2	95.6	90	90	13.9	63.98	58.23	1,333	1,466
76 SWIFT															
APPLETON (CSF)	784	2	45	256	310	613	9.3	94.6	82	18	29.9	66.22	50.39	702	648
BENSON	777	6	73	517	608	1,204	2.0	95.9	69	84	14.4	60.19	51.04	1,385	1,409
KERKHOVEN-MURDOCK-SUN	775	4	54	266	301	625	1.7	95.9	84	45	13.9	71.45	61.16	707	724
77 TODD															
BERTHA-HEWITT	786	5	29	272	296	602	2.5	94.8	85	47	12.9	58.89	52.82	694	707
BROWERVILLE	787	5	27	193	274	499	.4	95.2	69	38	14.5	62.75	54.84	580	652
CLARISSA (ICA)	789	2	22	164	150	338	3.4	96.2	66	26	11.9	59.88	53.77	382	324
EAGLE BEND (ICA)	790	3	22	137	191	353	3.7	92.4	76	22	12.6	54.71	49.19	410	381
GREY EAGLE (ICA)	791	4	19	140	160	323	.7	60.8	68	11	12.8	64.53	54.46	370	301
LONG PRAIRIE (ICA)	792	12	70	474	612	1,168	1.2	95.2	60	85	14.7	66.01	57.10	1,352	1,377
STAPLES-MOTLEY	2170	10	114	827	1,007	1,958	1.8	94.0	81	120	14.7	65.77	57.94	2,256	2,103
78 TRAVERSE															
BROWNS VALLEY	801	2	13	94	83	192	26.4	94.7	50	19	11.3	63.43	59.31	215	285
WHEATON	803	5	38	219	229	491	3.5	95.6	60	38	14.2	58.16	53.51	556	608

District Number	Revenue %			1994 - 95 Expenditures per Pupil Unit																			Other Measures per Pupil Unit				
	15. Federal	16. State	17. Local and Other	18. District and School Admin.	19. District Support Services	20. Regular Instruction	21. Vocational Instruction	22. Exceptional Instruction	23. Instructional Support Services	24. Pupil Support Services	25. Operations and Maintenance	26. Food Service	27. Pupil Transpor- tation	28. Other Oper. Program	29. Total PK-12 Operating Expendi- tures	30. Community Service	31. Capital Outlay	32. Building Construction	33. Debt Service	34. Operating Funds Balance	35. Change in Funds Balance	36. State and Local Oper. Costs	37. Long Term Debt	38. 1993 Adj. Net Tax Capacity			
716	2 62	36		310	46 2141	80	949 184	63	274	159	383	55	4643	163	559	3445	257		65	17	3981	5766	2,795				
717	2 57	41		268	85 1808	181	674 124	107	218	200	329	212	4186	204	297	718	184		554	373	3546	1913	2,994				
721	2 68	30		233	125 1781	63	621 227	131	302	181	233	101	3997	142	292	0	229		178	280	3484	2068	2,527				
719	2 59	39		184	140 2171	103	617 187	135	304	187	333	55	4415	153	351	26	366		71	103	3842	2870	3,496				
720	2 50	48		336	131 2233	136	899 331	163	390	181	331	138	5268	130	304	798	182		474	16-	4666	4205	4,109				
726	2 6	92		390	106 2663	57	569 155	113	675	192	270	78	5266	194	201	2982	968		540	342-	4770	8840	20,352				
727	3 70	27		340	96 2265	87	663 173	60	425	178	270	58	4593	158	230	1446	692		370	35-	4066	13067	2,059				
728	2 67	31		276	77 2144	120	680 211	106	324	210	323	50	4521	108	331	597	411		446	217	3873	4858	2,560				
731	3 67	30		223	111 1945	339	482 128	53	313	164	318	140	4216	177	562	0	0		500	211	3608	258	2,141				
2365	5 56	39		334	86 1777	233	628 144	87	331	227	301	93	4241	122	217	0	0		552	200	3512	18	3,796				
732	3 62	35		331	109 2230	0	658 153	118	283	225	198	128	4433	170	684	0	103		270	172-	3917	1142	2,767				
745	3 67	30		261	110 2191	48	714 223	90	296	204	220	37	4396	74	476	1719	35		548	77	3878	59	1,405				
736	4 76	20		135	66 2414	75	809 113	137	272	233	246	224	4726	82	478	2415	453		1330-	61-	4023	75185	1,375				
737	8 64	28		481	90 1963	235	992 51	25	325	270	442	221	5097	268	349	1382	550		1239-	311	3874	19750	2,118				
750	3 69	28		327	65 2242	38	611 117	120	387	251	332	58	4547	150	234	59	411		390	196	3838	5072	2,164				
738	4 83	13		305	97 1978	101	553 162	28	298	183	147	108	3960	99	229	2	356		187	277	3444	3591	1,035				
739	5 75	20		293	61 1921	76	634 144	55	218	221	353	98	4075	131	285	0	341		539	287	3353	3021	1,464				
740	5 70	25		217	71 2066	83	715 166	83	242	194	408	66	4312	127	315	1340	503		448	199	3517	6702	1,868				
741	3 72	25		274	105 2111	135	563 154	56	234	207	249	60	4146	95	163	10	422		716	377	3590	4880	1,792				
748	2 70	28		187	69 2227	79	716 213	62	356	208	254	24	4396	85	293	113	385		500	53	3877	5299	2,161				
743	4 64	32		274	177 1971	94	700 205	84	292	172	254	109	4331	143	383	3671	193		399	297	3591	4580	1,912				
742	4 52	44		185	93 1835	66	1137 341	102	327	189	248	130	4653	199	256	0	202		273	36	4091	1976	3,733				
756	4 66	30		261	82 2345	74	596 200	118	279	243	270	78	4546	95	276	2414	201		276	242-	3902	2805	2,095				
763	3 65	32		342	146 2497	4	305 88	87	292	195	169	87	4212	128	108	0	0		352-	294-	3753	111	2,963				
761	3 61	36		195	151 1996	115	625 207	207	362	200	280	136	4475	128	295	1	163		280	42	3854	1887	2,757				
771	6 41	53		330	127 2478	117	882 166	83	505	257	295	109	5349	243	823	0	14		783	175-	4550	538	4,108				
768	5 71	24		256	198 2152	121	459 199	84	338	205	116	97	4226	131	454	0	10		670	111	3735	72	1,797				
769	4 62	34		248	72 2208	127	591 223	150	292	177	158	65	4310	242	589	50	298		708	81	3820	3492	2,290				
784	5 66	29		270	129 1910	169	774 197	141	332	122	284	99	4427	161	354	0	0		78	322	3776	49	2,978				
777	5 63	32		240	61 1869	266	711 225	133	347	220	191	51	4314	161	302	745	175		679	30-	3718	2943	2,480				
775	4 56	40		290	102 2363	75	703 164	98	412	231	462	85	4986	57	439	2158	1229		476	93	4095	17429	3,082				
786	8 80	12		221	69 1943	209	729 308	88	351	226	349	46	4540	91	160	0	207		599	74-	3649	4730	683				
787	7 76	17		254	75 2035	306	816 136	63	436	218	328	25	4691	96	245	0	308		721	2	3890	1232	1,127				
789	0 91	9		440	124 2080	190	529 268	63	300	0	372	80	4447	173	211	0	222		152-	381-	4056	2260	699				
790	12 74	14		409	115 1934	186	853 248	59	279	461	371	78	4992	123	324	0	88		253	8-	3793	422	769				
791	5 56	39		210	118 3753	0	716 172	12	210	148	304	83	5726	148	329	0	0		110-	515	4987	0	1,977				
792	4 71	25		267	65 2537	200	568 166	92	311	236	325	127	4894	117	175	0	217		392	20-	4208	53	1,504				
2170	5 71	24		294	126 2068	192	837 218	120	408	231	324	118	4937	107	835	0	300		295	187	4070	2358	1,712				
801	8 57	35		239	191 2619	0	731 191	79	361	227	239	86	4963	143	271	0	0		111	688-	4264	67	1,823				
803	4 54	42		418	31 2351	51	627 135	89	484	254	303	125	4868	139	417	0	0		551	332	4177	80	4,299				

County Number and Name School District Name	District Number	1994-95 Resident Average Daily Membership					Pupil Data			Professional Staff		Tax Capacity Rates		Pupil Units (Weighted ADM)	
		1. Pre- Kindergarten Handicapped	2. Kindergarten	3. Elementary (Grades 1-6)	4. Secondary (Grades 7-12)	5. Total (Pre-K thru Grade 12)	6. Percent Minority	7. Percent Attendance	8. Percent Transported	9. Total Staff (FTE)	10. Pupil-Staff Ratio	11. Auditor Percent	12. Equalized Percent	13. Resident Pupil Units	14. Total Pupil Units
79 WABASHA															
ELGIN-MILLVILLE	806	8	46	284	255	593	3.1	96.0	83	42	14.9	74.95	65.96	665	713
LAKE CITY	813	9	87	656	653	1,405	2.5	95.7	79	99	14.0	56.83	50.58	1,602	1,588
PLAINVIEW	810	6	63	530	526	1,125	2.9	96.2	72	83	14.0	68.28	61.11	1,289	1,327
WABASHA-KELLOGG	811	12	61	352	474	899	6	94.6	95	60	14.6	62.44	51.88	1,035	1,005
80 WADENA															
MENAHGA	821	4	50	343	344	741	1.2	94.3	85	50	14.7	61.36	56.03	841	843
SEBEKA	820	5	43	262	314	624	.6	93.8	94	45	14.7	61.62	57.37	715	760
VERNDALE	818	1	25	167	206	399	.0	95.1	100	40	11.4	117.40	112.94	459	526
WADENA-DEER CREEK	2155	18	126	613	746	1,503	1.0	94.8	69	112	13.0	74.05	73.67	1,710	1,675
81 WASECA															
JANESVILLE-WALDORF-PE	2835	22	43	345	526	936	2.5	95.0	62	70	12.3	49.30	43.09	1,097	1,029
N.R.H.E.G.	2168	12	63	475	545	1,095	1.2	95.4	79	81	14.0	66.92	59.76	1,261	1,301
WASECA	829	21	174	978	1,108	2,281	3.8	94.1	71	161	14.4	66.30	59.67	2,597	2,661
82 WASHINGTON															
FOREST LAKE	831	36	556	3,527	3,536	7,655	2.8	93.7	93	493	15.5	60.89	53.28	8,671	8,679
MAHTOMEDI	832	14	187	1,225	1,080	2,506	2.8	94.4	100	161	15.7	79.76	70.02	2,819	2,872
SOUTH WASHINGTON CO.	833	57	999	6,653	5,875	13,584	6.1	94.1	71	757	17.8	68.96	62.28	15,288	15,202
STILLWATER	834	41	558	4,162	3,964	8,725	2.8	94.7	85	489	17.7	67.46	59.71	9,910	9,858
83 WATONWAN															
BUTTERFIELD	836	3	25	116	130	274	18.6	94.8	48	26	10.1	64.60	56.92	309	299
MADELIA	837	8	52	241	345	646	17.9	95.5	63	52	12.2	62.09	53.15	741	731
ST. JAMES	840	11	92	604	620	1,327	16.2	94.8	80	102	12.8	49.49	43.30	1,509	1,493
84 WILKIN															
BRECKENRIDGE	846	8	86	471	543	1,108	5.5	94.9	74	73	15.1	49.53	46.31	1,261	1,274
CAMPBELL-TINTAH	852	1	14	115	113	243	.0	94.3	66	21	10.9	63.58	59.95	277	259
RÖTHSAY	850		21	98	131	250	7.0	95.9	87	23	11.7	64.58	59.99	286	303
85 WINONA															
LEWISTON	857	5	46	330	406	787	2.0	96.2	74	64	13.5	49.61	43.81	907	992
ST. CHARLES	858	7	78	528	470	1,083	8.9	95.5	52	69	15.3	59.62	51.63	1,220	1,196
WINONA	861	27	341	2,258	2,242	4,868	4.9	94.3	68	329	14.3	54.66	49.09	5,519	5,384
86 WRIGHT															
ANNANDALE	876	11	131	866	835	1,843	1.7	94.9	95	116	15.4	68.82	57.81	2,086	2,057
BUFFALO	877	27	291	2,109	2,069	4,496	1.8	94.9	93	277	16.0	69.30	61.47	5,111	5,101
DELAND	879	12	121	695	799	1,627	2.3	95.0	99	100	16.6	66.58	57.59	1,855	1,915
HOWARD LAKE (ASE)	880	8	67	355	449	879	.7	94.7	83	57	14.4	57.08	47.60	1,006	987
MAPLE LAKE	881	4	68	398	445	915	.9	95.3	83	62	14.1	66.72	57.18	1,042	1,024
MONTICELLO	882	21	225	1,591	1,380	3,217	1.8	94.4	96	250	13.2	62.27	58.97	3,623	3,730
ROCKFORD	883	17	127	788	653	1,585	2.2	94.5	80	106	14.3	59.17	52.07	1,771	1,710
ST. MICHAEL-ALBERTV'L	885	5	162	873	787	1,827	.7	95.9	90	117	16.0	61.38	54.07	2,042	2,106
87 YELLOW MEDICINE															
CANBY	891	6	43	308	430	787	1.9	95.7	65	59	13.4	62.03	56.70	917	930
ECHO (ASE)	893	1	13	63	64	141	2.7	97.1	71	6	12.3	64.93	59.28	158	132
GRNT FLS-CLRKFLD(ASE)	2183	6	82	632	628	1,348	7.9	95.3	72	81	16.8	68.45	62.56	1,539	1,574

District Number	Revenue %			1994 - 95 Expenditures per Pupil Unit																	Other Measures per Pupil Unit				
	15. Federal	16. State	17. Local and Other	18. District and School Admin.	19. District Support Services	20. Regular Instruction	21. Vocational Instruction	22. Exceptional Instruction	23. Instructional Support Services	24. Pupil Support Services	25. Operations and Maintenance	26. Food Service	27. Pupil Transportation	28. Other Oper. Program	29. Total PK-12 Operating Expenditures	30. Community Service	31. Capital Outlay	32. Building Construction	33. Debt Service	34. Operating Funds Balance	35. Change in Funds Balance	36. State and Local Oper. Costs	37. Long Term Debt	38. 1993 Adj. Net Tax Capacity	
806	3	74	23	345	56	1952	63	680	82	117	286	212	322	34	4148	61	182	394	98	261	174	3514	4883	1,731	
813	3	64	33	257	77	2127	185	526	215	124	293	217	267	62	4351	109	223	1690	157	480	10	3775	1997	2,552	
810	3	70	27	231	144	2171	63	566	177	104	304	215	285	80	4341	114	354	126	328	465	95	3754	3065	1,858	
811	3	66	31	296	67	1937	93	602	209	150	314	221	372	50	4312	80	89	0	552	703	249	3591	7379	2,596	
821	6	71	23	288	92	2104	106	515	184	89	267	255	225	51	4178	64	247	19	782	707	222	3527	10835	1,298	
820	7	76	17	294	87	1860	203	796	209	70	355	215	310	71	4473	79	336	0	135	946	172	3720	1050	1,164	
818	6	67	27	313	93	2112	154	919	89	18	259	244	208	105	4514	109	778	5799	510	158	18	3813	7491	1,328	
2155	7	66	27	279	126	2035	176	1041	171	83	347	189	176	104	4728	124	258	199	608	690	354	3999	9288	1,243	
2835	6	62	32	370	114	2198	62	900	205	50	330	180	289	86	4783	81	246	0	12	415	153	4047	148	2,687	
2168	4	58	38	282	102	2012	106	580	125	79	350	179	213	38	4066	99	271	219	523	1058	295	3519	5739	3,092	
829	6	59	35	276	143	2069	132	894	203	125	300	227	240	102	4713	341	937	0	116	253	61	3805	1432	2,350	
831	3	61	36	238	90	2287	71	490	204	101	316	197	286	72	4352	184	397	15	201	405	179	3745	2087	2,853	
832	2	46	52	327	159	2051	95	651	131	138	383	169	234	112	4450	236	278	92	473	51	265	3881	11244	4,192	
833	2	58	40	238	149	2039	105	583	206	112	309	167	201	44	4152	209	383	1626	512	569	35	3703	7259	2,836	
834	2	42	56	271	95	2536	53	470	182	263	363	171	240	167	4810	171	319	9	465	298	196	4227	6770	4,454	
836	5	48	47	397	179	2473	94	543	119	26	430	252	215	170	4897	72	165	0	0	293	87	4270	51	3,841	
837	5	58	37	278	102	2040	84	944	131	121	347	231	332	111	4721	103	323	0	0	686	210	3998	206	3,155	
840	6	65	29	327	99	2185	110	743	138	211	356	209	279	76	4734	172	251	0	159	269	204	4070	65	2,578	
846	5	63	32	280	93	2037	22	822	143	78	376	178	161	214	4405	133	336	0	102	654	91	3901	1	2,603	
852	8	27	65	411	135	2407	401	883	113	53	511	241	213	787	6154	14	705	0	0	555	68	5517	0	6,736	
850	4	53	43	346	151	2360	471	435	309	163	468	282	457	82	5525	171	390	0	0	788	264	4379	114	2,849	
857	4	72	24	279	82	2016	83	738	119	96	327	227	238	121	4325	89	272	0	175	162	17	3731	724	2,223	
858	4	72	24	223	105	2300	58	527	179	75	230	221	231	36	4185	94	262	0	48	492	0	3607	17	1,751	
861	3	62	35	266	81	2039	57	975	172	126	342	208	339	113	4719	190	249	56	2	232	29	4065	615	3,102	
876	3	59	38	326	97	2139	42	663	266	113	329	198	344	54	4570	120	296	0	538	594	115	3935	7558	3,138	
877	3	60	37	183	105	1974	113	620	216	148	284	193	350	87	4273	153	246	443	1451	453	103	3623	7547	2,526	
879	2	57	41	248	78	2061	93	656	153	81	313	191	343	69	4286	182	355	0	779	436	131	3738	10620	3,207	
880	4	62	34	316	116	2411	136	790	232	88	335	178	317	66	4985	167	336	113	127	389	179	4107	606	2,442	
881	2	69	29	306	155	2099	88	623	240	62	317	228	304	74	4494	148	234	309	453	638	149	3892	4627	2,239	
882	5	34	61	229	127	2349	59	1299	145	80	403	197	307	58	5253	143	232	11	539	442	145	4502	4093	5,423	
883	2	66	32	270	73	2125	72	659	203	103	306	208	245	54	4317	203	335	0	597	156	78	3817	6050	2,379	
885	2	72	26	354	77	2000	44	505	165	110	337	175	312	38	4117	233	516	19	408	567	291	3552	10101	2,054	
891	5	67	28	361	139	2090	62	682	235	87	344	231	204	17	4452	179	595	0	8	723	93	3874	174	2,284	
893	6	38	56	361	59	2665	0	711	238	11	466	246	729	74	5560	252	361	0	0	618	22	4365	0	4,658	
2183	4	57	39	311	67	2026	25	919	101	64	381	211	299	93	4498	211	354	0	169	467	182	3814	1068	2,904	

The figures listed on the next six pages are, for each county, totals for all school districts which have their central offices in the county. Totals are also listed for the state's thirteen development regions and for the entire state. Counties are listed by region, with the regions in numerical order.

		1994-95 Resident Average Daily Membership					Pupil Data			Professional Staff		Tax Capacity Rates		Pupil Units (Weighted ADM)	
		1. Pre-Kindergarten Handicapped	2. Kindergarten	3. Elementary (Grades 1-6)	4. Secondary (Grades 7-12)	5. Total (Pre-K thru Grade 12)	6. Percent Minority	7. Percent Attendance	8. Percent Transported	9. Total Staff (FTE)	10. Pupil-Staff Ratio	11. Auditor Percent	12. Equalized Percent	13. Resident Pupil Units	14. Total Pupil Units
KITTSOON		7	83	538	583	1,211	2.2	95.4	73	103	11.7	71.24	67.48	1,383	1,377
MARSHALL		7	121	1,005	1,119	2,252	4.7	95.4	59	185	12.1	60.60	54.93	2,595	2,530
NORMAN		7	109	667	764	1,547	8.7	94.5	80	131	12.1	66.05	59.51	1,766	1,887
PENNINGTON		9	163	1,119	1,240	2,531	3.7	91.5	82	184	13.8	73.67	65.46	2,895	2,931
POLK		15	456	2,855	3,079	6,405	10.2	94.4	69	481	13.5	60.87	55.46	7,293	7,576
RED LAKE		2	41	381	562	986	3.2	94.9	86	81	12.5	64.71	61.40	1,159	1,192
ROSEAU		27	309	1,705	1,617	3,658	4.3	94.4	75	239	15.1	68.73	57.91	4,115	4,126
REGION 01		74	1,282	8,270	8,964	18,590	6.5	94.2	73	1,404	13.3	65.13	58.84	21,205	21,618
BELTRAMI		47	650	3,772	3,469	7,938	26.8	91.6	87	576	13.8	63.83	57.26	8,916	8,991
CLEARWATER		15	112	866	862	1,855	12.2	93.7	96	129	14.5	56.30	52.98	2,117	2,163
HUBBARD		26	165	1,197	1,244	2,632	5.8	94.2	97	204	13.8	61.24	52.88	3,005	3,230
LAKE OF THE WOODS		4	60	396	379	839	2.1	94.3	97	58	14.4	68.52	60.30	952	948
MAHNOMEN		17	109	622	786	1,534	53.0	90.5	79	131	11.7	57.07	50.59	1,761	1,774
REGION 02		109	1,096	6,853	6,740	14,798	22.3	92.4	90	1,098	13.7	61.39	54.80	16,751	17,106
AITKIN		22	145	1,099	1,154	2,420	5.5	94.7	83	173	13.7	55.62	46.84	2,768	2,720
CARLTON		41	499	2,838	3,055	6,433	8.3	94.0	84	454	14.5	65.72	59.39	7,299	7,523
COOK		2	46	340	331	719	11.0	92.2	83	50	14.3	41.07	34.78	816	815
ITASCA		44	562	3,691	4,182	8,479	7.5	93.6	90	546	15.3	52.85	48.18	9,707	9,711
KOOCHICHING		12	160	1,077	1,274	2,523	5.3	92.2	92	186	13.8	59.57	54.18	2,899	2,977
LAKE		13	157	1,092	1,055	2,317	1.2	95.3	80	140	15.8	69.50	54.97	2,629	2,607
ST. LOUIS		149	2,209	14,586	15,769	32,713	6.0	94.5	79	2,265	14.4	60.50	52.77	37,347	37,681
REGION 03		283	3,778	24,723	26,820	55,604	6.3	94.2	82	3,814	14.5	58.58	51.50	63,465	64,033
BECKER		52	358	2,300	2,378	5,088	10.4	94.0	76	374	13.5	62.29	55.08	5,784	5,764
CLAY		50	699	4,480	4,188	9,417	11.1	93.5	68	669	13.9	67.72	56.56	10,625	10,642
DOUGLAS		38	389	2,497	2,910	5,834	1.3	94.3	83	393	15.0	61.21	55.97	6,690	6,728
GRANT		6	84	657	715	1,462	1.5	94.9	74	100	14.1	66.57	57.84	1,677	1,699
OTTER TAIL		44	568	4,106	4,443	9,161	2.7	93.8	81	620	14.8	60.77	52.76	10,482	10,547
POPE		7	125	943	967	2,042	2.0	95.8	86	144	13.5	68.86	61.96	2,332	2,293
STEVENS		12	86	787	905	1,790	3.4	95.7	82	139	13.4	65.36	58.70	2,069	2,170
TRAVERSE		7	51	313	312	683	9.9	95.4	58	57	13.2	58.92	54.33	772	894
WILKIN		9	121	684	787	1,601	5.0	95.0	75	117	13.6	55.99	52.44	1,825	1,836
REGION 04		225	2,481	16,767	17,605	37,078	5.9	94.2	77	2,613	14.1	63.05	55.41	42,255	42,572
CASS		31	330	2,203	2,083	4,647	24.2	92.7	85	345	12.9	56.97	47.53	5,259	5,062
CROW WING		73	643	4,438	4,611	9,765	2.2	94.6	91	643	15.4	59.84	51.66	11,128	11,322
MORRISON		46	367	2,711	3,114	6,238	1.4	94.4	92	429	14.7	54.13	48.93	7,171	7,307
TODD		41	303	2,207	2,690	5,241	1.7	93.6	73	349	14.0	64.46	56.43	6,046	5,845
WADENA		28	244	1,385	1,610	3,267	8	94.5	81	247	13.4	74.76	71.78	3,728	3,804
REGION 05		219	1,887	12,944	14,108	29,158	5.3	94.1	86	2,013	14.3	59.61	51.59	33,331	33,340

Revenue %			1994 - 95 Expenditures per Pupil Unit																Other Measures per Pupil Unit				
15. Federal	16. State	17. Local and Other	18. District and School Admin.	19. District Support Services	20. Regular Instruction	21. Vocational Instruction	22. Exceptional Instruction	23. Instructional Support Services	24. Pupil Support Services	25. Operations and Maintenance	26. Food Service	27. Pupil Transportation	28. Other Oper. Program	29. Total PK-12 Operating Expenditures	30. Community Service	31. Capital Outlay	32. Building Construction	33. Debt Service	34. Operating Funds Balance	35. Change in Funds Balance	36. State and Local Oper. Costs	37. Long Term Debt	38. 1993 Adj. Net Tax Capacity
3 38 59			503	68 2679	10	548 204	79	541	245	303 221	5401	109	490	0 182	398	110	4642	1329	5,468				
5 51 44			432	86 2385	74	688 142	89	462	254	312 197	5122	141	634	658 67	558	63	4329	795	3,899				
6 57 37			349	65 2242	399	706 112	42	365	250	458 127	5113	122	228	2 160	633	382	4151	2668	3,461				
5 71 24			337	125 2061	163	799 241	82	412	210	234 129	4794	126	505	1884 533	292	23	4152	7975	1,865				
5 65 30			326	114 2120	186	633 181	97	363	230	218 117	4584	114	382	50 114	430	54	3959	2705	2,584				
6 65 29			468	99 2241	135	505 108	153	445	246	262 74	4736	137	527	0 50	43	323	3918	329	2,074				
4 68 28			246	105 2138	89	576 202	108	439	195	311 104	4512	145	336	617 605	441	155	3731	10555	2,048				
5 62 33			346	102 2199	156	645 180	93	411	227	278 131	4768	127	421	468 264	422	110	4042	4491	2,776				
11 67 22			293	118 2269	125	1034 225	94	480	233	317 258	5447	164	277	130 313	434	24	4379	4910	1,703				
7 59 34			315	111 2150	73	747 258	97	305	215	341 98	4710	114	250	1675 269	536	75	3876	6745	2,972				
6 56 38			318	110 1929	131	746 294	117	359	223	283 43	4554	131	428	486 115	302	82	3846	1936	3,709				
4 60 36			346	67 2122	0	543 159	92	391	304	366 153	4544	156	557	0 412	691	31	3864	15192	2,163				
15 67 18			425	130 2449	160	1124 241	93	390	286	400 144	5841	73	142	0 166	56	36	4437	1738	2,021				
10 64 26			317	114 2200	116	925 240	98	421	238	325 180	5175	141	304	372 260	386	31	4192	4859	2,283				
6 56 38			332	131 2237	73	597 203	147	450	222	328 100	4819	87	313	126 198	667	87	4062	4668	3,772				
6 66 28			328	152 2189	92	742 162	150	350	171	284 90	4709	161	309	0 300	443	147	3995	4603	2,258				
6 26 68			394	111 2489	8	602 172	99	399	151	276 211	4912	129	275	0 0	727	14	4179	384	8,460				
5 51 44			265	138 2297	106	1028 218	130	412	172	361 111	5235	110	429	11 175	14	28	4444	2103	3,995				
5 59 36			323	118 2325	54	681 176	141	618	198	282 179	5097	127	524	304 83	169	13	4416	6538	2,411				
3 57 40			346	69 2150	92	608 199	110	466	159	291 288	4779	168	393	206 59	196	711	4140	2296	2,715				
5 64 31			298	162 2098	120	842 271	160	465	153	262 237	5068	182	386	523 317	154	74	4454	4667	2,502				
5 61 34			302	149 2162	107	828 239	150	449	163	285 194	5028	161	386	337 263	198	98	4364	4200	2,839				
6 64 30			316	99 2110	117	768 198	121	345	196	361 50	4681	119	326	184 175	634	3	3866	1650	2,443				
5 70 25			253	97 2088	52	1048 221	106	275	164	262 151	4716	141	332	599 272	393	115	4084	2121	2,358				
5 58 37			220	75 2126	74	648 169	151	315	209	219 76	4282	119	352	521 345	337	84	3670	4420	3,010				
6 58 36			378	151 2231	148	555 254	51	307	220	241 112	4649	185	450	3 72	306	437	4012	454	3,214				
4 62 34			266	110 2079	133	690 162	104	313	179	307 66	4409	115	337	1513 271	523	44	3742	3435	2,793				
5 62 33			216	154 2362	115	570 137	86	325	266	315 75	4620	145	312	0 1202	650	25	3871	9542	2,159				
4 60 36			263	101 2244	124	618 210	129	334	195	174 78	4469	224	606	34 206	715	41	3927	2359	2,527				
6 55 39			361	82 2438	35	661 153	86	445	246	283 113	4902	140	371	0 0	428	47	4208	76	3,608				
6 54 40			310	109 2143	150	767 167	88	410	205	217 273	4839	123	397	0 71	660	94	4210	18	3,270				
5 63 32			268	103 2133	99	771 187	111	317	192	276 99	4555	134	357	634 294	488	68	3890	2973	2,674				
9 45 46			324	153 2274	70	1020 283	98	381	247	362 78	5288	137	415	133 331	514	15	4284	4491	5,100				
5 47 48			214	65 2067	170	766 217	103	324	202	288 72	4486	110	276	378 228	487	221	3992	3592	4,078				
6 75 19			312	98 1933	226	839 192	83	339	213	348 75	4658	119	349	12 213	278	70	3884	2112	1,513				
5 73 22			286	98 2239	198	736 210	91	357	228	332 95	4869	113	438	0 237	336	64	4060	1725	1,379				
7 69 24			289	106 2026	163	859 170	73	319	217	218 86	4526	99	343	894 539	677	248	3813	7834	1,251				
6 60 34			273	96 2094	171	826 215	92	341	217	312 79	4717	115	349	253 277	440	100	4004	3551	2,882				

		1994-95 Resident Average Daily Membership					Pupil Data			Professional Staff		Tax Capacity Rates		Pupil Units (Weighted ADM)	
		1. Pre-Kindergarten Handicapped	2. Kindergarten	3. Elementary (Grades 1-6)	4. Secondary (Grades 7-12)	5. Total (Pre-K thru Grade 12)	6. Percent Minority	7. Percent Attendance	8. Percent Transported	9. Total Staff (FTE)	10. Pupil-Staff Ratio	11. Auditor Percent	12. Equalized Percent	13. Resident Pupil Units	14. Total Pupil Units
KANDIYOHI		35	495	3,284	3,215	7,029	11.5	93.1	94	565	12.6	71.08	65.03	7,968	8,207
MCLEOD		34	456	2,809	3,018	6,317	3.5	94.3	82	390	16.2	61.35	49.89	7,186	7,293
MEEKER		43	396	2,632	2,712	5,783	2.9	95.0	96	382	15.0	66.71	58.46	6,575	6,544
RENVILLE		26	232	1,428	1,498	3,184	8.5	94.9	85	230	13.4	52.45	47.24	3,620	3,579
REGION O6E		138	1,579	10,153	10,443	22,313	6.6	94.2	90	1,567	14.2	63.80	55.89	25,350	25,623
BIG STONE		8	84	614	610	1,316	2.6	96.2	67	112	12.5	58.40	50.89	1,498	1,676
CHIPPEWA		15	163	1,301	1,416	2,895	4.5	94.5	70	218	13.7	70.16	61.62	3,324	3,383
LAC QUI PARLE		12	114	719	775	1,620	2.0	95.8	67	85	17.9	55.11	49.66	1,844	1,818
SWIFT		12	172	1,039	1,219	2,442	2.8	95.6	76	147	16.1	65.02	55.39	2,795	2,782
YELLOW MEDICINE		13	138	1,003	1,122	2,276	5.6	95.5	70	146	15.3	66.25	60.54	2,615	2,637
REGION O6W		60	671	4,676	5,142	10,549	3.8	95.4	71	708	14.8	64.22	56.69	12,076	12,296
CHISAGO		31	531	3,480	3,176	7,218	1.7	92.7	94	428	16.6	60.13	52.58	8,137	8,087
ISANTI		43	321	2,661	2,501	5,526	2.4	92.8	86	354	15.9	57.66	48.45	6,292	6,453
KANABEC		14	196	1,291	1,289	2,790	2.8	94.2	84	181	15.3	58.36	51.62	3,163	3,149
MILLE LACS		54	367	2,775	2,815	6,011	5.6	92.8	84	400	15.0	66.85	57.97	6,861	6,892
PINE		14	311	2,052	2,180	4,557	4.8	94.2	88	337	13.7	61.70	53.39	5,195	5,328
REGION O7E		156	1,726	12,259	11,961	26,102	3.4	93.2	88	1,700	15.4	61.44	53.14	29,647	29,910
BENTON		32	379	2,314	2,420	5,145	1.3	94.6	82	334	15.1	62.28	57.09	5,843	5,762
SHERBURNE		50	807	5,022	4,640	10,519	2.5	94.4	92	700	15.0	45.14	42.72	11,859	11,975
STEARNS		216	1,555	10,818	11,865	24,454	2.5	94.8	85	1,605	15.3	63.72	58.29	27,975	28,258
WRIGHT		105	1,192	7,675	7,417	16,389	1.6	94.9	92	1,085	15.0	64.62	57.87	18,540	18,630
REGION O7W		403	3,933	25,829	26,342	56,507	2.1	94.7	88	3,724	15.1	58.42	53.65	64,217	64,625
COTTONWOOD		8	148	1,060	1,139	2,355	8.6	95.3	63	180	12.9	61.58	53.34	2,699	2,720
JACKSON		12	148	874	984	2,018	5.7	95.4	63	162	12.7	57.51	51.13	2,299	2,299
LINCOLN		9	83	516	632	1,240	1.0	96.1	80	88	12.9	57.88	52.55	1,422	1,471
LYON		27	342	2,093	2,433	4,895	6.7	95.4	76	346	14.5	52.58	46.66	5,599	5,867
MURRAY		10	99	709	752	1,570	1.1	96.7	75	122	13.0	59.63	53.13	1,794	1,816
NOBLES		25	226	1,676	1,819	3,746	13.4	95.0	78	265	13.8	58.84	52.14	4,292	4,292
PIPESTONE		21	149	997	939	2,106	4.5	94.9	58	154	14.2	55.24	47.91	2,380	2,362
REDWOOD		23	190	1,329	1,628	3,170	2.8	95.1	79	234	13.4	58.08	51.17	3,657	3,748
ROCK		10	117	837	887	1,851	3.4	96.1	65	137	13.8	58.92	49.35	2,115	2,175
REGION O8		145	1,502	10,091	11,213	22,951	6.2	95.4	72	1,688	13.6	57.26	50.39	26,259	26,751
BLUE EARTH		76	709	4,861	4,815	10,461	4.4	94.0	68	691	15.2	59.65	53.19	11,888	11,973
BROWN		36	298	2,044	2,198	4,576	3.9	95.4	72	330	13.9	55.46	48.51	5,223	5,283
FARIBAULT		28	182	1,301	1,525	3,036	5.1	95.9	60	163	18.0	63.01	56.18	3,492	3,416
LESUEUR		54	363	2,244	2,534	5,195	4.3	94.5	66	346	14.5	67.05	56.13	5,931	5,769
MARTIN		29	265	1,894	2,133	4,321	3.1	94.6	80	278	15.6	60.20	60.21	4,957	5,074
NICOLLET		28	135	1,055	1,186	2,404	2.6	93.1	72	155	15.9	70.11	60.54	2,763	2,855
SIBLEY		15	199	1,073	1,189	2,476	3.9	95.0	85	162	14.9	57.90	49.90	2,811	2,768
WASECA		55	280	1,798	2,179	4,312	2.9	94.6	71	312	13.8	62.69	55.92	4,957	4,992
WATONWAN		22	169	961	1,095	2,247	17.0	95.0	72	180	12.2	55.85	48.59	2,561	2,524
REGION O9		343	2,600	17,231	18,854	39,028	4.6	94.6	71	2,617	14.8	60.66	54.17	44,582	44,654

Revenue %			1994 - 95 Expenditures per Pupil Unit																	Other Measures per Pupil Unit				
15. Federal	16. State	17. Local and Other	18. District and School Admin.	19. District Support Services	20. Regular Instruction	21. Vocational Instruction	22. Exceptional Instruction	23. Instructional Support Services	24. Pupil Support Services	25. Operations and Maintenance	26. Food Service	27. Pupil Transportation	28. Other Oper. Program	29. Total PK-12 Operating Expenditures	30. Community Service	31. Capital Outlay	32. Building Construction	33. Debt Service	34. Operating Funds Balance	35. Change in Funds Balance	36. State and Local Oper. Costs	37. Long Term Debt	38. 1993 Adj. Net Tax Capacity	
4 62 34	290	101	2334	162	978	180	123	351	223	311	98	5150	150	416	600	415	23	122 -	4446	6727	2,636			
3 67 30	290	102	2030	64	581	157	104	333	203	295	93	4252	123	230	94	382	91	81	3628	2373	2,548			
3 67 30	291	100	2026	60	639	169	81	332	199	311	140	4347	138	319	934	292	493	24	3734	3946	2,017			
5 54 41	323	104	2178	58	715	148	78	349	200	270	68	4491	150	328	0	9	542	9	3813	121	3,690			
4 63 33	295	101	2147	93	741	166	101	341	208	301	103	4597	139	326	457	317	238	8 -	3943	3828	2,601			
5 61 34	316	150	2086	213	755	112	82	330	233	316	164	4757	186	418	0	20	42	101	4024	117	2,810			
6 59 35	287	112	2047	218	863	142	57	349	355	291	77	4797	179	263	2322	178	695	248	3988	5578	2,619			
5 62 33	282	145	2095	118	621	198	124	391	198	271	71	4513	175	289	0	13	492	105	3854	406	2,819			
5 61 34	260	88	2008	194	724	203	126	361	200	284	71	4516	134	350	940	409	477	90	3830	5881	2,757			
5 60 35	331	92	2081	37	825	155	69	373	220	287	66	4537	202	440	0	104	566	141	3864	690	2,793			
5 60 35	294	112	2058	158	773	163	88	360	251	289	84	4630	174	346	851	168	505	148	3911	3122	2,743			
3 70 27	241	139	1942	109	671	256	118	289	189	217	80	4251	151	305	33	320	382	152	3751	3031	2,005			
5 69 26	242	104	2093	189	788	136	143	332	179	208	52	4462	110	293	610	285	346	96	3847	2606	1,770			
4 73 23	258	94	2036	95	652	161	125	364	202	208	54	4251	146	215	1764	620	550	112 -	3702	3554	1,976			
5 67 28	287	116	2025	98	665	180	117	346	209	321	119	4482	139	269	117	360	353	150	3726	4242	1,965			
5 64 31	312	105	2088	83	871	181	160	321	205	304	75	4706	90	267	9	338	440	255	4008	2650	2,211			
4 68 28	266	115	2030	118	728	189	132	325	196	253	79	4431	128	278	355	356	396	129	3806	3210	1,915			
3 68 29	222	81	2093	50	703	196	104	253	212	293	74	4280	150	302	1527	322	427	99	3584	5399	1,786			
2 56 42	302	84	2236	103	662	197	100	389	202	308	55	4638	128	297	1064	532	447	102	4030	6684	4,883			
4 62 34	228	91	1993	75	885	247	89	313	201	267	100	4489	154	283	475	281	308	120	3880	621	2,685			
3 56 41	256	103	2123	81	764	196	107	328	194	322	65	4540	164	302	149	777	456	125	3896	6778	3,143			
3 60 37	249	92	2084	80	793	218	97	326	200	293	79	4513	152	293	584	474	387	116	3886	3412	3,141			
4 50 46	375	160	2269	141	895	171	111	406	229	208	136	5100	177	365	0	58	386	94 -	4528	737	3,790			
5 52 43	308	113	2315	110	693	170	100	395	239	291	87	4822	198	583	0	161	587	91 -	4049	954	3,973			
5 59 36	343	97	2081	248	540	98	78	333	252	310	93	4473	105	327	487	46	660	282	3705	67	2,781			
4 58 38	302	103	2069	74	652	154	85	378	221	236	58	4331	139	361	0	128	598	67	3718	1149	3,405			
6 60 34	382	131	2167	145	764	156	96	417	221	459	159	5096	181	492	0	26	211	185	4225	390	3,291			
4 57 39	328	130	2043	97	1167	331	75	336	230	297	130	5164	162	495	0	145	205	16	4466	937	3,022			
7 57 36	295	48	2528	81	899	209	81	351	211	408	121	5232	190	273	0	15	1011	35 -	4286	27	2,894			
4 51 45	310	112	2187	61	677	167	83	319	237	267	59	4480	111	279	0	249	502	272	3799	4279	3,646			
5 63 32	248	91	2101	101	631	162	145	317	200	211	89	4297	173	196	0	11	637	168	3705	98	2,844			
5 56 39	318	111	2173	103	788	190	92	360	226	284	97	4742	156	376	27	113	515	75	4042	1194	3,332			
4 58 38	241	108	2153	68	705	203	111	380	195	258	56	4480	167	365	192	202	463	124	3879	2299	3,502			
3 61 36	282	86	2103	114	607	216	102	284	191	347	78	4411	149	301	653	134	664	57	3726	1217	3,301			
4 56 40	278	82	2673	34	664	137	72	263	233	266	84	4786	218	618	2	16	84	227 -	4171	345	3,407			
4 66 30	293	98	2030	106	680	140	102	324	202	222	82	4278	153	317	91	299	243	89	3698	2388	2,290			
3 52 45	278	106	2106	103	659	199	75	380	235	296	3	4441	207	514	87	3	585	202	3894	431	3,398			
3 62 35	297	105	2037	42	872	186	153	358	165	294	67	4577	106	253	0	406	338	261	3956	3598	2,405			
4 61 35	300	100	1943	207	591	141	84	313	207	280	116	4282	151	441	0	26	466	111	3644	371	3,028			
5 59 36	297	126	2081	111	813	183	98	320	205	243	82	4559	225	621	57	200	494	73	3781	2243	2,613			
5 61 34	321	109	2178	101	778	134	163	362	220	287	97	4751	140	262	0	94	321	67 -	4074	104	2,898			
4 59 37	278	103	2138	93	702	180	104	339	204	273	68	4482	171	408	157	165	429	84	3852	1650	3,067			

COUNTIES, DEVELOPMENT REGIONS & STATE

[illegible]

Revenue %			1994 - 95 Expenditures per Pupil Unit																Other Measures per Pupil Unit				
15. Federal	16. State	17. Local and Other	18. District and School Admin.	19. District Support Services	20. Regular Instruction	21. Vocational Instruction	22. Exceptional Instruction	23. Instructional Support Services	24. Pupil Support Services	25. Operations and Maintenance	26. Food Service	27. Pupil Transportation	28. Other Oper. Program	29. Total PK-12 Operating Expenditures	30. Community Service	31. Capital Outlay	32. Building Construction	33. Debt Service	34. Operating Funds Balance	35. Change in Funds Balance	36. State and Local Oper. Costs	37. Long Term Debt	38. 1993 Adj. Net Tax Capacity
3 72 25			271	74 1940	59	641	184	87	276	211	247	124	4114	105	393	325	119	369	392	3506	2687	2,040	
5 72 23			354	100 2216	123	754	175	74	329	251	268	93	4737	128	461	0	108	101	120	3975	852	1,990	
4 66 30			290	97 2163	89	723	149	147	383	187	247	169	4623	102	221	2	119	136	61	4004	1088	2,420	
3 44 53			273	78 2151	125	685	196	131	322	216	272	89	4539	165	322	1874	452	390	195	3918	5129	4,761	
3 69 28			303	103 2215	59	577	145	95	309	220	312	116	4453	162	279	139	304	448	122	3904	803	2,050	
5 60 35			298	145 1971	160	879	217	98	412	211	237	273	4902	151	324	143	339	230	104	4332	4624	2,342	
3 51 46			240	102 2111	88	758	313	131	353	187	318	110	4711	207	284	67	951	557	127	4289	2077	3,631	
3 61 36			259	150 2208	61	1026	258	104	351	218	321	61	5017	173	340	83	313	378	12	4330	5547	2,731	
4 62 34			218	139 2096	99	593	196	182	342	207	269	122	4463	122	275	394	155	226	33	3853	1889	2,666	
3 68 29			272	91 2072	111	578	182	123	300	217	304	60	4309	97	225	676	282	494	58	3689	3929	2,248	
4 65 31			261	85 2078	61	873	166	114	323	212	309	102	4583	162	254	40	32	226	19	3949	532	2,782	
3 58 39			266	107 2113	94	757	224	122	341	207	290	117	4636	159	301	359	424	368	84	4062	2790	3,025	
3 58 39			286	119 2178	115	817	214	170	340	229	256	94	4818	205	308	232	218	183	13	4370	3656	2,746	
2 54 44			310	131 2008	74	807	243	129	323	166	374	102	4667	171	525	2873	677	532	296	3996	9669	3,378	
2 49 49			282	119 2221	59	720	221	137	364	185	256	83	4647	220	324	752	653	270	35	4102	7086	3,831	
4 35 61			352	225 2414	103	1093	275	202	435	207	332	173	5812	295	360	868	511	355	75	5090	4178	6,142	
6 47 47			250	175 2266	90	1094	276	248	434	221	256	234	5543	265	295	847	211	222	16	4810	5267	4,223	
2 58 40			255	120 2069	108	732	227	132	315	183	317	103	4559	151	341	628	260	247	126	3975	3243	3,347	
2 53 45			254	121 2233	82	536	193	152	331	175	234	89	4400	195	361	689	423	417	24	3868	6211	3,381	
4 45 51			299	169 2285	93	931	249	188	395	205	286	148	5250	248	337	778	421	296	44	4614	5049	4,523	
4 52 44			290	139 2203	100	850	227	149	376	204	287	129	4955	198	339	579	366	338	67	4308	4098	3,673	

ENROLLMENT SIZE GROUPS

The chief purpose of this table is to permit easy comparisons of districts with similar enrollment. For example, a superintendent in a district with 600 pupils may want to examine the data for Group 4 (470 to 624 ADM) to see how his/her expenditures compare with other districts of similar size.

		1994-95 Resident Average Daily Membership					Pupil Data			Professional Staff		Tax Capacity Rates		Pupil Units (Weighted ADM)	
		1. Pre-Kindergarten Handicapped	2. Kindergarten	3. Elementary (Grades 1-6)	4. Secondary (Grades 7-12)	5. Total (Pre-K thru Grade 12)	6. Percent Minority	7. Percent Attendance	8. Percent Transported	9. Total Staff (FTE)	10. Pupil-Staff Ratio	11. Auditor Percent	12. Equalized Percent	13. Resident Pupil Units	14. Total Pupil Units
1	0 TO 234	40	431	2,805	2,935	6,211	5.5	95.8	78	518	11.3	64.07	57.57	7,070	6,908
2	235 TO 339	56	655	4,692	5,258	10,661	4.5	94.9	73	837	12.4	61.25	54.39	12,237	12,097
3	340 TO 469	88	986	6,474	7,399	14,947	2.7	95.1	79	1,118	12.9	64.50	57.52	17,119	17,249
4	470 TO 624	124	1,315	9,005	10,153	20,597	3.5	95.2	75	1,545	13.6	62.44	55.06	23,595	24,173
5	625 TO 874	185	1,931	12,551	13,687	28,354	5.8	94.5	76	1,996	14.3	60.84	52.72	32,362	32,947
6	875 TO 1149	270	2,572	16,930	18,716	38,488	6.7	94.8	79	2,767	13.9	59.39	52.23	43,992	44,444
7	1150 TO 1499	384	3,421	22,904	24,469	51,178	6.6	94.8	77	3,465	14.7	55.92	49.79	58,401	58,455
8	1500 TO 2199	383	4,919	32,083	33,572	70,957	4.5	94.6	85	4,706	15.2	62.72	55.49	80,755	82,038
9	2200 TO 4449	863	8,637	57,495	57,239	124,234	5.7	93.8	83	8,185	15.1	65.24	59.29	141,015	142,328
10	4450 OR HIGHER	2743	36,210	215,939	187,515	442,407	17.2	93.4	84	28,895	15.2	67.11	62.24	495,242	496,278

The table below lists totals or averages for all districts in each of ten enrollment size groups, based on 1994-95 resident daily members (ADM). For example, Group 1 includes all districts with 234 or fewer ADM and Group 2 includes all districts with 235 to 339 ADM. Each group includes approximately ten percent of the state's school districts.

	Revenue %			1994 - 95 Expenditures per Pupil Unit															Other Measures per Pupil Unit					
	15. Federal	16. State	17. Local and Other	18. District and School Admin.	19. District Support Services	20. Regular Instruction	21. Vocational Instruction	22. Exceptional Instruction	23. Instructional Support Services	24. Pupil Support Services	25. Operations and Maintenance	26. Food Service	27. Pupil Transportation	28. Other Oper. Program	29. Total PK-12 Operating Expenditures	30. Community Service	31. Capital Outlay	32. Building Construction	33. Debt Service	34. Operating Funds Balance	35. Change in Funds Balance	36. State and Local Oper. Costs	37. Long Term Debt	38. 1993 Adj. Net Tax Capacity
01	7.49	44		424	180	2657	71	779	155	58	421	275	376	123	5520	165	460	902	25	489	5	4609	1071	3,803
02	5.58	37		379	135	2332	134	589	201	65	420	233	311	120	4919	132	415	162	84	394	23	4154	2490	3,118
03	5.62	33		347	130	2195	154	639	154	88	364	232	311	97	4709	135	372	438	223	479	103	3939	935	2,748
04	5.59	36		324	104	2174	120	642	175	85	346	215	290	98	4573	122	381	296	194	257	33	3883	143	3,094
05	5.63	32		318	117	2143	117	673	162	95	352	215	285	109	4587	125	368	201	296	375	69	3884	3688	2,610
06	5.60	35		317	101	2142	101	762	175	91	340	207	299	108	4644	141	337	339	256	438	129	3951	2976	2,891
07	5.61	34		287	104	2182	96	708	185	103	352	206	284	94	4602	146	340	619	252	457	119	3911	3205	2,981
08	4.65	31		270	104	2075	93	695	197	114	361	205	262	86	4462	141	335	479	371	415	131	3857	4870	2,323
09	4.53	43		286	126	2150	95	860	233	145	386	197	288	124	4887	195	307	663	297	327	71	4230	3846	3,517
10	4.47	49		283	159	2244	99	934	251	179	384	201	288	148	5169	232	340	638	439	299	46	4544	4735	4,229

The table below lists a variety of summary statistics for each of the 38 variables included in this report. The attendant definitions explain the meaning of these statistics. It may be used to better understand the distribution of a particular variable among Minnesota school districts. For example, percent attendance (column 7) varies little; ninety percent of the school districts are within the narrow range of 92.2% (5th percentile) to 96.7% (95th percentile).

The table may also be used to see how an individual school district compares with other districts in the state. Two examples illustrate the use of the data.

1. A district which has total PK-12 operating expenditures (column 29) of \$4,600 per pupil unit is very near the median value, which is \$4,619. Thus about half the districts in the state have lower and half have higher expenditures.
2. A district with total average daily membership (column 5) of 360 students is between the 20th and 25th percentiles for this variable. Somewhere between 20 and 25 percent of Minnesota school districts have fewer students than this district.

		1994-95 Resident Average Daily Membership					Pupil Data			Professional Staff		Tax Capacity Rates		Pupil Units (Weighted ADM)	
		1. Pre-Kindergarten Handicapped	2. Kindergarten	3. Elementary (Grades 1-6)	4. Secondary (Grades 7-12)	5. Total (Pre-K thru Grade 12)	6. Percent Minority	7. Percent Attendance	8. Percent Transported	9. Total Staff (FTE)	10. Pupil-Staff Ratio	11. Auditor Percent	12. Equalized Percent	13. Resident Pupil Units	14. Total Pupil Units
Lowest Value		0	2	12	9	27	.0	.0	41	0	.0	.00	.00	30	22
5th Percentile		0	11	84	83	178	.0	92.2	55	12	10.2	49.49	42.84	202	204
10th Percentile		1	14	99	113	235	.4	93.0	60	19	11.3	51.37	44.89	270	259
20th Percentile		2	22	146	160	340	1.1	93.9	67	24	12.3	55.43	47.97	388	381
25th Percentile		2	25	171	196	397	1.4	94.1	70	30	12.8	56.98	49.85	452	469
30th Percentile		2	30	193	232	472	1.6	94.3	72	37	13.0	58.89	51.61	548	536
40th Percentile		4	43	279	311	626	2.1	94.6	76	47	13.6	60.94	53.36	715	730
Median (50th)		5	59	376	429	877	2.7	94.9	80	62	14.1	63.06	55.39	1,011	1,027
60th Percentile		8	76	516	551	1,152	3.6	95.2	84	83	14.5	65.28	57.45	1,319	1,327
70th Percentile		10	108	686	721	1,503	5.1	95.5	87	103	15.0	67.20	59.36	1,710	1,712
75th Percentile		12	127	826	837	1,824	6.1	95.7	90	117	15.3	68.58	61.05	2,042	2,084
80th Percentile		15	148	991	1,075	2,206	7.5	95.8	91	152	15.5	70.14	62.57	2,523	2,647
90th Percentile		30	329	2,128	2,056	4,496	12.0	96.2	95	294	16.0	74.57	67.04	5,111	5,213
95th Percentile		47	558	3,567	3,389	7,618	16.9	96.7	99	481	16.8	78.39	71.95	8,610	8,678
Highest Value		315	4,654	23,266	16,398	44,525	100.0	97.8	100	3,321	36.2	120.01	112.94	48,714	48,252
State (Total or Avg.)		5136	61,077	380,878	360,943	808,034	11.9	93.9	83	54,032	14.9	65.26	59.66	911,790	916,916

Lowest Value. For any specific variable, the lowest value of that variable among all school districts. The table also shows the highest value for each variable.

XXth Percentile. For any specific variable, a value chosen such that XX percent of the school districts are below the chosen value. For example, the 10th percentile for total staff (column 9) is 19. This means that ten percent of the school districts have 19 or fewer staff members (FTE). The 25th and 75th percentile are called quartiles; the 10th, 20th, 30th, ... through 90th percentiles are called deciles.

Median. For any specific variable, a value chosen such that half of the school districts are below the chosen value and half are above.

State Total. For variables 1 - 5 (1994-95) resident average daily membership, 9 (total staff), and 13-14 (pupil units), the state total is simply the sum of the corresponding value for all districts listed in the report. For all other variables, the state total is computed as the sum of the numerators for all districts, divided by sum of the denominators. For these variables, the state total is a form of weighted average.

$$\text{Example: } \frac{\text{State Total of Pupils}}{\text{State Total of Staff}} = \text{State Total Pupil-Staff Ratio}$$

	Revenue %			1994 - 95 Expenditures per Pupil Unit																	Other Measures per Pupil Unit				
	15. Federal	16. State	17. Local and Other	18. District and School Admin.	19. District Support Services	20. Regular Instruction	21. Vocational Instruction	22. Exceptional Instruction	23. Instructional Support Services	24. Pupil Support Services	25. Operations and Maintenance	26. Food Service	27. Pupil Transportation	28. Other Oper. Program	29. Total PK-12 Operating Expenditures	30. Community Service	31. Capital Outlay	32. Building Construction	33. Debt Service	34. Operating Funds Balance	35. Change in Funds Balance	36. State and Local Oper. Costs	37. Long Term Debt	38. 1993 Adj. Net Tax Capacity	
Low	0	2	3	0	30	1378	0	92	0	0	0	0	97	0	3844	0	0	0	0	1727-	1053-	3225	0	0	
5th	2	31	19	207	56	1870	0	430	85	12	247	148	176	34	4075	64	155	0	0	352-	362-	3498	0	1,314	
10th	2	39	22	227	66	1937	1	476	102	24	275	160	197	42	4186	79	182	0	0	70-	223-	3570	11	1,566	
20th	3	49	25	253	80	2006	38	542	128	56	297	179	221	55	4317	94	231	0	0	120	76-	3693	78	1,893	
25th	3	53	27	266	87	2040	48	566	138	63	304	185	234	61	4378	102	247	0	0	206	36-	3738	140	2,058	
30th	3	54	29	274	93	2066	59	596	144	68	313	192	244	66	4408	108	258	0	11	260	17-	3778	225	2,166	
40th	4	57	32	293	102	2120	74	635	162	82	328	205	258	77	4514	123	285	0	66	362	26	3854	574	2,384	
Med.	4	61	35	307	114	2150	85	679	177	92	347	214	283	89	4619	133	321	0	169	456	70	3941	1319	2,716	
60th	4	63	38	327	126	2221	101	729	195	104	367	224	304	103	4735	150	353	0	242	524	115	4064	2843	3,041	
70th	5	67	41	346	140	2287	120	794	209	120	392	234	329	120	4932	167	403	38	331	582	174	4215	4079	3,431	
75th	5	69	43	356	151	2336	134	819	220	132	409	239	345	130	5014	181	441	158	388	640	203	4284	4754	3,740	
80th	6	70	46	378	163	2367	157	863	235	144	428	245	365	140	5211	204	462	394	433	671	247	4377	5884	4,076	
90th	7	73	56	428	193	2613	208	1010	276	170	484	273	424	214	5528	247	595	1446	597	779	360	4767	8840	5,075	
95th	9	75	66	479	220	2833	276	1170	336	207	541	306	474	280	6021	291	732	2518	782	920	505	5149	10823	6,471	
Hgh.	33	91	95	1314	931	4044	775	3064	788	631	1633	754	1362	787	11798	609	1181	71145	3032	5686	2171	8320	19750	20,352	
Ste.	4	52	44	290	139	2203	100	850	227	149	376	204	287	129	4955	198	339	579	366	338	67	4308	4098	3,673	

