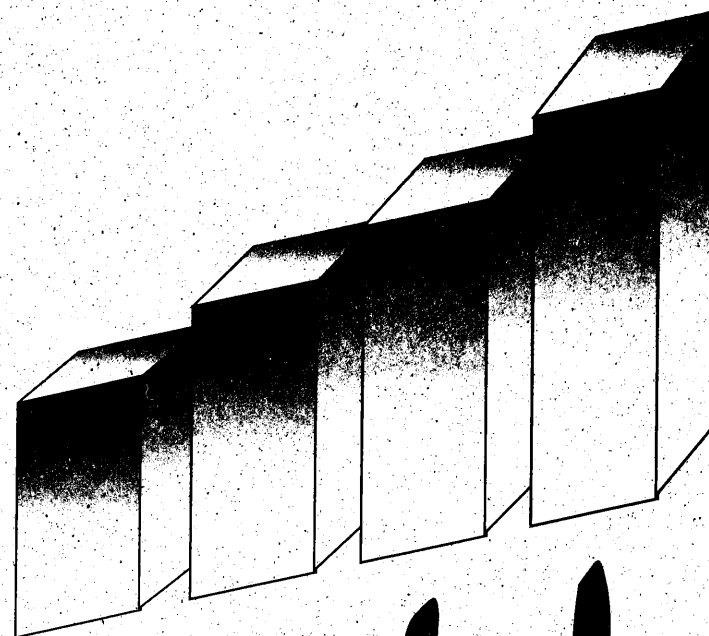


LEGISLATIVE REFERENCE LIBRARY  
3 0307 00013 4695



# Profiles

Minnesota  Children

Minnesota Department of Children, Families & Learning

LB  
2817  
.S38  
1993/94

December 1995

Bruce Johnson, Commissioner

Department of Children, Families and Learning

This document was prepared and published by staff of the Data Management and Education Funding Teams,  
Minnesota Department of Children, Families and Learning, 845 Capitol Square Building, St. Paul, Minnesota 55101

## 1993-94 Profiles

### ERRATA Sheet

The following pages are out of sequence:

<u>Page</u>	<u>Is Location on Page:</u>
48	50
49	51
50	48
51	49
52	Connect
53	54
54	53





RECEIVED

MAY 02 1996

LEGISLATIVE REFERENCE LIBRARY  
STATE OFFICE BUILDING  
ST. PAUL, MN 55155

Introduction .....	1
UFARS Sources of Expenditure Data .....	5
Trends and Patterns .....	6
Definitions .....	14
List of School Districts .....	19
Map - Minnesota Counties and Development Regions .....	23

#### STATISTICAL TABLES

Data for School Districts .....	24
Data for Counties, Development Regions and the State .....	47
Data for Enrollment Size Group .....	53
Summary Statistics .....	55

# TABLE OF CONTENTS

*School District Profiles, 1993-94* is the twenty second in a series of annual publications which compare school districts in the areas of enrollment, staffing and finance. Although some item definitions have changed slightly over this period, it is still possible to make long term comparisons.

### Interdistrict Cooperation

Legislation of the late 1970's and early 1980's encouraged Minnesota school districts to cooperate in the provision of educational services to students. The aegis for these efforts was two-fold, 1) to ensure that all students receive adequate course offerings and, 2) to make the delivery of these courses more cost-efficient statewide.

Laws enacted in 1979 and 1983 suspended the requirement that every school district provide educational services for all grades. This allowed districts to enter into agreements with each other for the provision of services for particular grades. More than one hundred districts participated in an Agreement for Secondary Education (ASE) or Interdistrict Cooperation Agreements (ICA) during the 1993-94 school year.

ICAs allow two or more districts to cooperate in providing services for specific grades. However, only one of the districts may provide service for pupils in grades 10, 11 and 12. ASEs allow a district(s) with fewer than 375 pupils in grades 7-12 to enter into an agreement with another district(s) to provide instruction to its secondary pupils. Districts in these arrangements are noted in parenthesis after the district name by an ICA or ASE respectively.

In 1993-94 the following districts participated in one or more of those agreements:

### Agreements for Secondary Education (ASE):

218	Delavan
2134	United South Central
2148	Blue Earth
219	Elmore
2148	Blue Earth
2536	Granada-East Chain
243	Emmons
245	Glenville
371	Bellingham
062	Ortonville
6011	Lac Qui Parle

413	Marshall
417	Tracy
635	Milroy
424	Lester Prairie
427	Winsted
880	Howard Lake
451	Ceylon
454	Fairmont
2448	Martin County West
521	Ada
522	Borup
570	Finlayson
573	Hinckley
593	Crookston
599	Fertile
604	Mentor
630	Red Lake Falls
2609	Win-E-Mac
611	Cyrus
769	Morris
637	Redwood Falls
652	Morton
892	Clarkfield
893	Echo
894	Granite Falls

### Interdistrict Cooperation Agreements (ICA):

021 Audubon  
024 Lake Park  
057 Beardsley  
801 Browns Valley  
126 Clara City  
127 Maynard  
346 Raymond  
145 Glyndon-Felton  
147 Dilworth  
158 Gonvick  
161 Clearbrook  
175 Westbrook  
641 Walnut Grove  
209 Kensington  
262 Barrett  
263 Elbow Lake  
265 Hoffman  
254 Kenyon  
258 Wanamingo  
325 Lakefield  
330 Heron Lake  
328 Sioux Valley  
513 Brewster  
516 Round Lake

341 Atwater  
464 Gove City  
461 Cosmos  
354 Kennedy  
2359 Kittson Central  
402 Hendricks  
403 Ivanhoe  
409 Tyler  
418 Russell  
584 Ruthton  
412 Cottonwood  
896 Wood Lake  
421 Brownton  
426 Stewart  
440 Middle River  
678 Greenbush  
504 Slayton  
918 Chandler-Lake Wilson  
523 Norman County East  
526 Twin Valley  
631 Belview  
648 Danube  
654 Renville  
655 Sacred Heart

178 Storden-Jeffers  
633 Lamberton  
638 Sanborn  
636 Morgan  
650 Franklin  
669 Magnolia  
670 Luverne  
731 Arlington  
732 Gaylord  
736 Belgrade  
737 Brooten  
762 Ellendale  
827 New Richland  
789 Clarissa  
790 Eagle Bend

In addition to ICAs and ASEs, eleven districts were members of a Cooperative Secondary Facility (CSF) as noted in parenthesis after their name. In this arrangement member districts operate a separate school for the secondary pupils of each of the member districts.

**1993-94 CSF Districts**

128	Milan
218	Delevan
219	Elmore
225	Winnebago
240	Blue Earth
376	Marietta
377	Madison
612	Glenwood
614	Starbuck
615	Villard
784	Appleton

**Consolidations**

Recent State Board of Education rules mandating more rigorous minimal course offerings, combined with legislative financial inducements, has resulted in a number of school district consolidations in recent years. A significant number of these consolidations developed out of prior interdistrict cooperation agreements (ASE or ICA) between the districts. Between the 1992-93 and the 1993-94 school year thirty-one school districts combined to form thirteen new districts. The table on the right lists the districts that have consolidated.

1992-93 District Number	1993-94 District Number
72 Mapleton 79 Amboy 223 Minnesota Lake	2135 Maple River
140 Taylors Falls 141 Chisago Lakes	2144 Chisago Lakes
217 Bricelyn 222 Kiester 224 Wells 244 Freeborn	2134 United South Central
225 Winnebago 240 Blue Earth	2148 Blue Earth
236 Wykoff 237 Spring Valley	2137 Kingsland
376 Marietta-Nassau 377 Madison	2153 Madison-Marietta-Nassau
395 Waterville-Elysian 657 Morristown	2143 Waterville-Elysian-Morristown
436 Alvarado 446 Warren	2163 Warren-Alvarado
543 Deer Creek 819 Wadena	2155 Wadena-Deer Creek
612 Glenwood 614 Starbuck 615 Villard	2149 Minnewaska
647 Buffalo Lake 651 Hector	2159 Buffalo Lake-Hector
692 Babbitt 708 Tower-Soudan 710 St. Louis County	2142 St. Louis County
697 Eveleth 699 Gilbert	2154 Eveleth-Gilbert
408 Verdi	Dissolved. Was absorbed by: 404 Lake Benton 583 Pipestone

**FOR MORE INFORMATION**

Copies of *School District Profiles, 1993-94* may be purchased from:

Minnesota's Bookstore  
Print Communications Division  
117 University Avenue  
St. Paul, Minnesota 55155  
Telephone: (612)297-3000 or  
Toll Free: 1-800-657-3757

If you have comments or questions concerning information in this report, or would like further information, please contact:

Minnesota Department of  
Children, Families and Learning  
Data Management Team  
845 Capitol Square Building  
St. Paul, MN 55101  
Telephone: (612)296-2400

For more specific information regarding financial data, please call:

Financial Management Team  
Telephone: (612)296-4436

The table below is intended for use by persons who are familiar with the Uniform Financial Accounting and Reporting System (UFARS) and its manual, *Manual for the Uniform Financial Accounting and Reporting System for Minnesota Schools*.

Each of the 16 expenditure categories in *Profiles* includes all expenditures within a defined set of funds, programs and objects as defined in the above table. The table on the right summarizes the funds, major program categories and object categories used for *Profiles*.

## Funds

- 1 General
- 2 Food Service
- 3 Pupil Transportation
- 4 Community Service
- 5 Capital Expenditure
- 6 Building Construction
- 7 Debt Service
- 9 Trust and Agency

## Objects

- 460 Textbooks
- 500-599 Capital Expenditures
- 910 Transfers to Other Funds

## Major Program Categories

- 0 Districtwide (no specific program)
- 1 - 99 District and School Administration
- 100-199 District Support Services
- 200-299 Regular Instruction
- 300-399 Vocational Instruction
- 400-499 Exceptional Instruction
- 500-599 Community Services
- 600-699 Instructional Support Services
- 700-799 Pupil Support Services
- 800-899 Sites, Buildings and Equipment
- 900-999 Other Programs

## Expenditure Categories

### Categories Used in the Report

- 18. District and School Administration
- 19. District Support Services
- 20. Regular Instruction
- 21. Vocational Instruction
- 22. Exceptional Instruction
- 23. Instructional Support Services
- 24. Pupil Support Services
- 25. Operations and Maintenance
- 26. Food Service
- 27. Pupil Transportation
- 28. Other operating programs
- 29. Total PK-12 Operating Expenditures  
(this is the total of categories 18 through 28)
- 30. Community Service
- 31. Capital Outlay
- 32. Building Construction
- 33. Debt Service

### Funds

- 1 and 9
- 1 and 9
- 1 and 9
- 1 and 9
- 1 and 9
- 1 and 9
- 1 and 9
- 1 and 9
- 2
- 3
- 1 and 9
- 1, 2, 3 & 9
- 4
- 5
- 1, 2, 3 & 4
- 6
- 7

### Programs

- 1 - 99
- 100 - 199
- 200 - 299
- 300 - 399
- 400 - 499
- 600 - 699
- 700 - 799
- 800 - 899
- All
- All
- 0, 500 - 599 & 900 - 999
- All
- All
- All
- All
- All
- All

### Objects

- All objects except 500-599 and 910
- All but 910 & 460\*
- 500 - 599
- All but 910
- All but 910

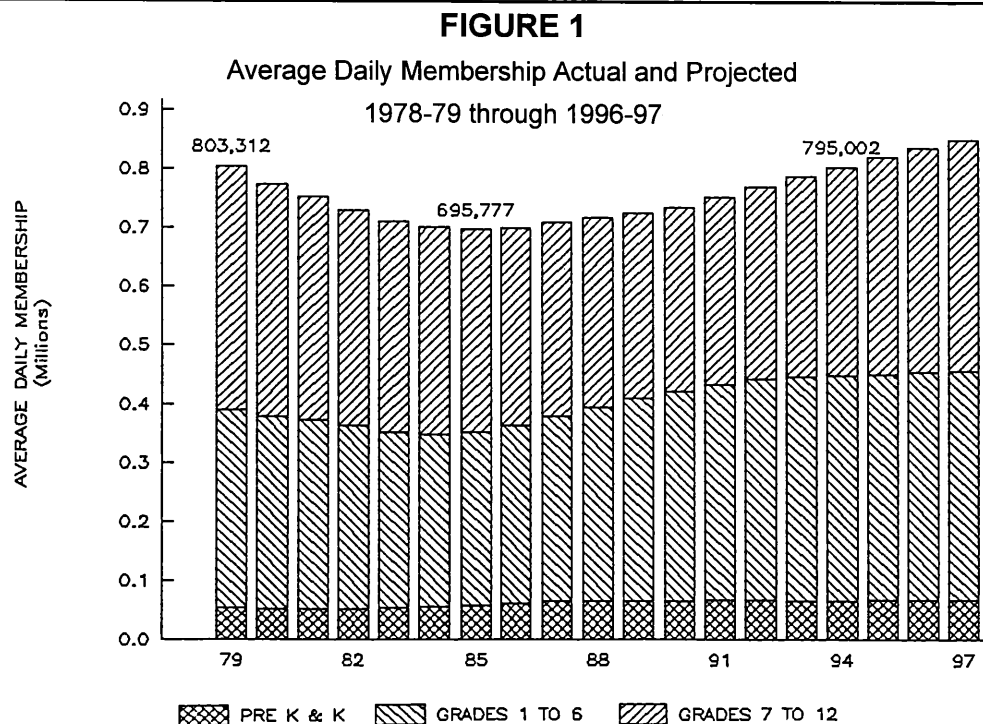
\* 460 textbook expenditures have been allocated, based on program code, into categories 18-28 to assure valid inter-year comparisons.

**STUDENTS:**

The enrollment increases which began with the 1985-86 school year continue, as shown in *Figure 1*. Enrollment in 1993-94 totaled 795,002, a 1.7 percent increase over the 1992-93 total of 781,409. The vast majority of enrollment increases are the result of increased births; the effect of migration on Minnesota's total enrollment is minimal. Enrollments are projected to continue into the twenty-first century. Nevertheless, as indicated in *Table 1*, 36.8 percent of Minnesota's school districts experienced an enrollment decline of at least one percent during the past decade in spite of the total growth over the decade.

Minnesota's school districts vary greatly in enrollment size. The largest 10 districts, all in metropolitan areas, enrolled almost 30 percent of Minnesota's public school pupils. *Table 2*, indicates that ten percent of Minnesota districts enrolled over 54 percent of the state's public school pupils.

Minnesota, as well as the rest of the nation, is experiencing a growth in the proportion of its population classified as minorities. This minority population growth shows up in school enrollments as seen in *Figure 2* and *Table 3*, the latter

**TABLE 1**

Percent Change in Resident ADM  
1984-85 through 1993-94

	PERCENT OF DISTRICTS
20 Percent and Greater Growth	15.8
10 - 19 Percent Growth	19.4
1 - 9 Percent Growth	25.0
Less Than 1% Change	3.0
1 - 9 Percent Decline	20.7
10 - 19 Percent Decline	12.5
20 Percent and Greater Decline	3.6

**TABLE 2**

Distribution of Minnesota 1993-94 Resident  
ADM by Ten Enrollment Size Groups

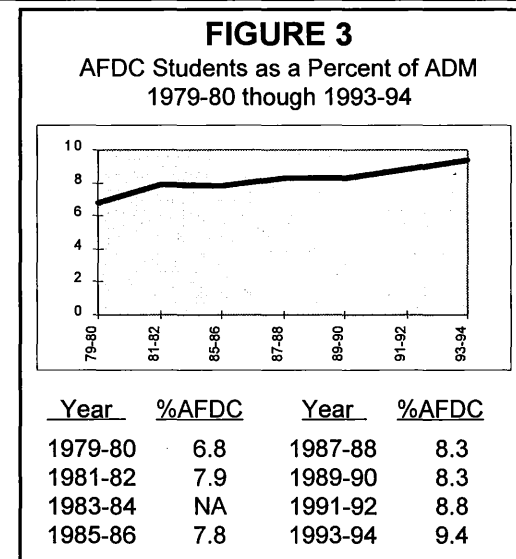
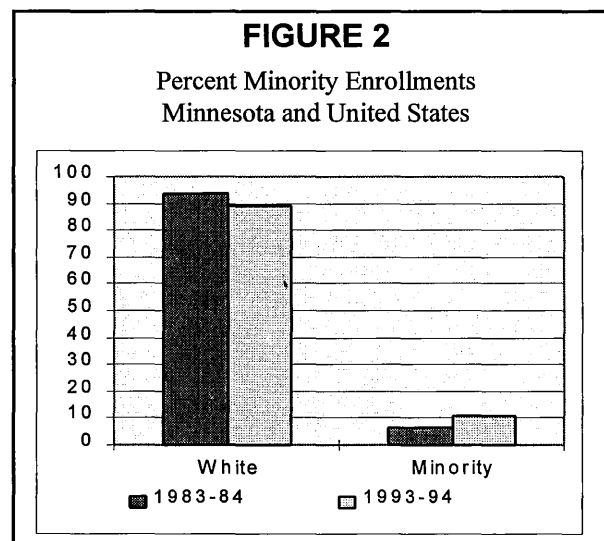
Group Number	Size Range 1993-94 Resident ADM	Number of District	Total Resident ADM	Percent State Total
1	0 - 239	41	6,874	.9
2	240 - 329	39	10,870	1.3
3	330 - 424	40	14,908	1.9
4	425 - 584	39	20,323	2.6
5	585 - 789	39	26,936	3.4
6	790 - 1074	39	36,741	4.6
7	1075 - 1439	41	51,846	6.5
8	1440 - 2149	39	68,552	8.6
9	2150 - 4439	39	124,937	15.7
10	4440 or Higher	39	433,015	54.5
State Totals		395	799,002	100.0

which also shows minority enrollments for the U.S. Although Minnesota's minority enrollment percentages increased significantly (from 6.6% in 1983-84 to 11.1% in 1993-94) they still constitute a very modest percentage of total Minnesota PK-12 public school enrollments--approximately one-third that of the U.S. as a whole. Further, Minnesota's **minority mix** is quite different than that of the United States. Blacks constitute approximately half of minority enrollments in the U.S., Hispanics an additional 37 percent, with Asians and Native Americans the remainder (for the 1992-93 school year). By contrast, Blacks represent 38 percent of Minnesota's minority enrollments, Asians 32 percent, with Hispanics and Native Americans each approximately 15 percent. Native Americans have always constituted a significant proportion of Minnesota's population; its Asian population grew manyfold after the Vietnam war.

Figure 3 indicates the percentage of Minnesota students who are from families receiving AFDC payments. This proxy measure of poverty has slowly increased over the decade.

TABLE 3					
Percent Minority Enrollments Minnesota and United States					
Year	Native American	Black	Asian	Hispanic	Total Minority
1986-87					
USA*	.09	16.1	2.8	9.9	29.6
MINN**	1.5	2.1	1.7	0.9	6.1
1992-93					
USA*	1.0	16.5	3.5	12.3	33.3
MINN**	1.7	3.9	3.3	1.5	10.4
1993-94					
USA*	NA	NA	NA	NA	NA
MINN**	1.8	4.2	3.5	1.7	11.1**

\* Source: *Digest of Education Statistics, 1994; National Center for Education Statistics*  
 \*\* Includes students enrolled in cooperatives and other non-traditional districts and may not agree with state averages in Profiles.





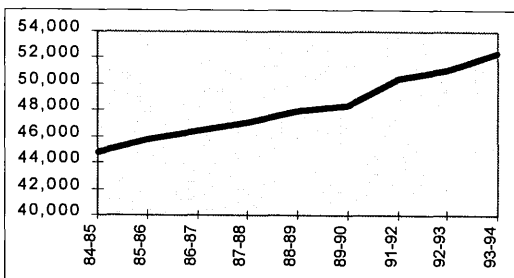
## INSTRUCTIONAL STAFF

Teachers, together with other district staff, are the most important input in the educational process. They also constitute a district's **largest operating cost**. *Figure 4* shows the number of these staff over the past decade, as well as, the ratio of pupils (in ADM) to instructional staff. This ratio varies little over time, except during periods of budgetary crises such as in the 1982-83 school year. Thus, enrollments are the primary force generating instructional costs.

Instructional costs are primarily the result of teacher salaries. These salaries are, in turn, determined by the interplay of a number of variables including salary negotiations between staff and their local school boards, as well as age, experience and education of the district's staff. Rapidly growing school districts will have a higher proportion of younger, less experienced staff with fewer advanced degrees which will translate into lower average salaries than in more stable districts with larger proportions of older, more experienced and better educated staff. *Figures 6 and 7* show how the age and educational attainment of Minnesota school teachers have changed over the decade. It indicates a cadre which is somewhat older but which possesses fewer advanced degrees.

**FIGURE 4**

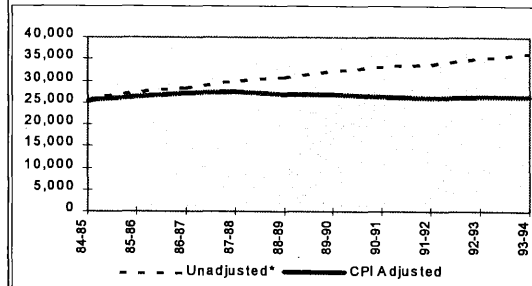
State Total Professional Staff  
1984-85 through 1993-94



Year	Staff	Pupils/Staff
1984-85	44,744	15.5
1985-86	45,789	15.2
1986-87	46,425	15.2
1987-88	47,031	15.2
1988-89	47,931	15.0
1989-90	48,372	15.1
1990-91	49,138	15.1
1991-92	50,386	15.0
1992-93	51,042	15.2
1993-94	52,415	15.1

**FIGURE 5**

Average Minnesota Teacher Salary

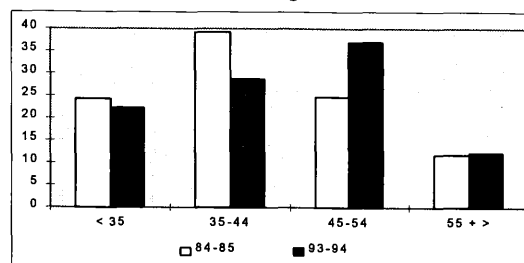


Year	Unadjusted*	CPI Adjusted
1984-85	25,450	25,450
1985-86	27,360	26,358
1986-87	28,340	27,016
1987-88	29,900	27,381
1988-89	30,660	26,871
1989-90	32,190	26,825
1990-91	33,130	26,169
1991-92	33,700	26,003
1992-93	35,093	26,248
1993-94	36,146	26,402

Source: *Rankings of the States*, National Education Association, various annual editions

**FIGURE 6**

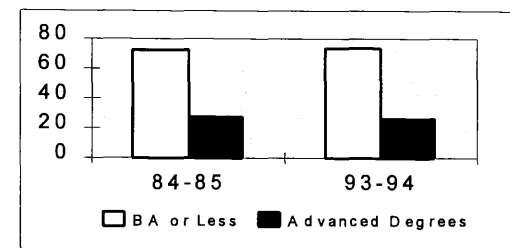
Age of Classroom Teachers  
1984-85 through 1993-94



Age	1984-85	1993-94
< 35	24.3	22.2
35-44	39.3	28.7
45-54	24.7	36.9
55 +	11.7	12.2

**FIGURE 7**

Distribution of Minnesota Classroom Teachers  
By Educational Attainment  
1984-85 and 1993-94



	1984-85	1993-94
BA or Less	71.9	74.0
Advanced Degrees	28.1	26.0

## FINANCIAL

### Revenues

School revenues come from three sources - state, local (predominantly property taxes) and Federal sources. *Figure 8* indicates that the percentage of revenue received by Minnesota school districts from the three sources remained fairly constant over most of the last decade until 1991-92. In 1991-92, as a result of state budgetary problems, school districts were required to **recognize** certain levy receipts earlier than in prior years. This earlier recognition had the effect of shifting the state/local mix towards a larger local contribution. The situation worsened in 1992-93 but rebounded in 1993-94 to percentages which were similar to most years of the decade.

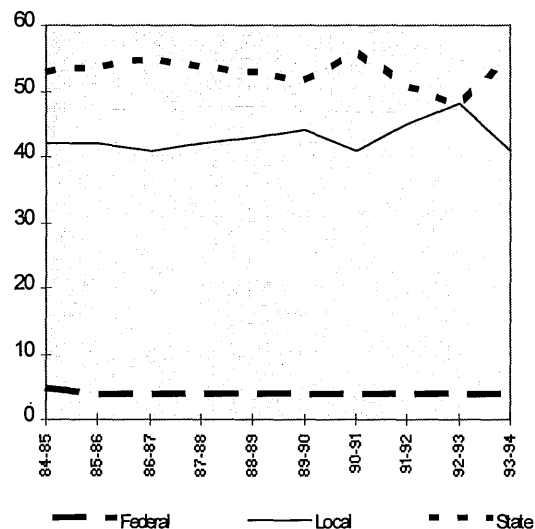
Minnesota's four percent Federal revenue percentage continues to lag behind the national average of approximately six percent. Federal funds are typically targeted towards specific disadvantaged client population groups which often constitute a smaller proportion of Minnesota's enrollment than is situation in most states.

Another way of examining Minnesota's PK-12 revenues is by fund. A fund is a self-contained set of accounts established for a specifically defined set of fiscal activities such as Food Service or Debt Redemption. *Table 4* compares Minnesota school district revenues, by the eight UFARS funds, for the years 1985-86 and 1993-94. Over that period, the proportion of revenues allocated to nonoperating funds has grown dramatically, led by very sizable increases in the

**FIGURE 8**

Statewide Average Sources  
Of Revenue

All Funds  
1984-85 through 1993-94



Year	Federal	Local	State
84-85	5%	42%	53%
85-86	4	42	54
86-87	4	41	55
87-88	4	42	54
88-89	4	43	53
89-90	4	44	52
90-91	4	41	56
91-92	4	45	51
92-93	4	48	48
93-94	4	41	55

**TABLE 4**

Percent of Minnesota Revenues  
By Fund\*

1985-86 and 1992-93

	1985-86	1993-94
General Fund	74.2	64.3
Food Service Fund	4.1	3.1
Transportation Fund	6.3	4.6
Community Service Fund	2.4	3.1
Total, Operating Funds	87.0	75.1
Capital Expenditure Fund	4.5	5.5
Building Construction Fund	3.2	9.3
Debt Redemption Fund	5.0	9.2
Trust and Agency Fund	0.3	0.9
Total Nonoperating Funds	13.0	24.9
TOTAL	100.0	100.0

\*Includes State, Local and Federal Sources

**TABLE 5**

Distribution of Operating Expenditures  
By Program

1984-85 and 1993-94

	1984-85	1993-94
Administration	8.6%	8.8%
Instruction	61.4	67.6
Student Services	14.4	12.9
Operations and Maintenance	10.1	7.9
Other Operating Programs	5.5	2.8

building construction and allied debt redemption funds. Publicity in recent years concerning America's rapidly deteriorating infrastructure, including school facilities, likely is a major factor in the increase in monies dedicated to Minnesota's school facilities.

## Expenditures

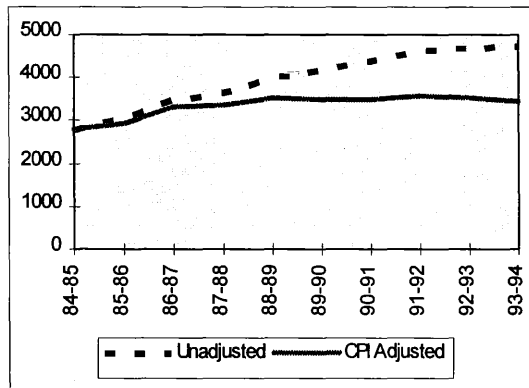
Figure 9 indicates that statewide average operating expenditures have grown at a rate exceeding inflation over most of the decade - as represented by the Consumer Price Index (CPI). It should also be noted that these expenditures vary significantly from district to district as shown in Figure 10. The top spending five percent of districts expended approximately 40 percent more than the lowest spending five percent.

The distribution of expenditures by program has also changed over the decade as indicated in Table 5. The percent expended on instruction has increased significantly while the remaining four program areas either declined or changed very little.

Figure 11 indicates that **nonoperating expenditures** continued to grow, also at a rate exceeding inflation. Nonoperating expenditures are those expenditures which are "fixed" in the short run, i.e., they vary little with changes in enrollment. Included are Capital Outlay, Building Construction and Debt Service (columns 31, 32 and 33 respectively). Part of their rapid growth is the result of equalizing of the capital expenditure levy which had the effect of providing poorer districts with additional dollars for capital needs.

**FIGURE 9**

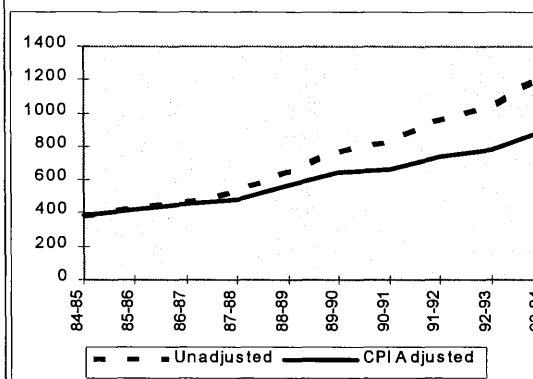
State Average Operating Expenditures  
Per Pupil Unit  
1984-85 through 1993-94



Year	Unadjusted	CPI Adjusted
1984-85	2808	2808
1985-86	3039	2928
1986-87	3485	3322
1987-88	3684	3374
1988-89	4017	3521
1989-90	4192	3495
1990-91	4398	3474
1991-92	4655	3592
1992-93	4706	3520
1993-94	4746	3465

**FIGURE 11**

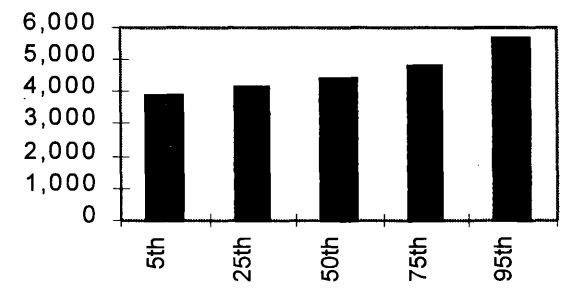
State Average Nonoperating Expenditures  
Per Pupil Unit  
1984-85 through 1993-94



Year	Unadjusted	CPI Adjusted
1984-85	386	386
1985-86	439	423
1986-87	476	454
1987-88	530	485
1988-89	651	571
1989-90	770	642
1990-91	836	660
1991-92	958	739
1992-93	1040	778
1993-94	1218	890

**FIGURE 10**

Distribution of Operating  
Expenditures Per Pupil Unit  
Selected Percentiles  
1993-94

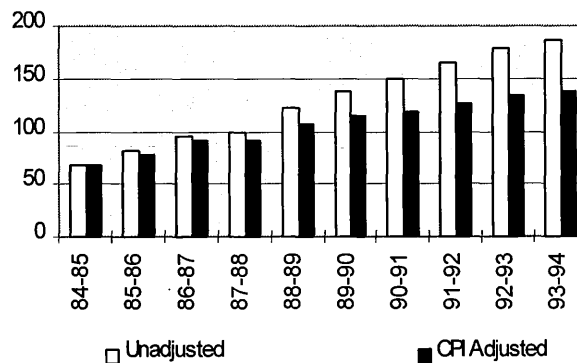


## COMMUNITY SERVICE:

Figure 12 shows the growth in community service expenditures since 1984-85. They have also grown faster than the general rate of inflation during the decade. Community education/community service programs were *traditionally* perceived as consisting *primarily* of courses in sports, recreation, crafts and more recently in self improvement and skills enhancement. However, beginning with the 1984-85 school year, the scope of the program was expended with the initiation of the Early Childhood and Family Education (ECFE) program. This program is designed to improve the parenting skills of parents with pre-school aged children and, as a result, the readiness of these children for school

**FIGURE 12**  
State Average Community Service Expenditures  
Per Pupil Unit

1984-85 through 1993-94



Year	Unadjusted	CPI Adjusted
1984-85	67	67
1985-86	81	78
1986-87	96	92
1987-88	100	92
1988-89	122	107
1989-90	137	114
1990-91	149	118
1991-92	165	127
1992-93	179	134
1993-94	187	137

## OPERATING FUNDS BALANCE:

A school district's undesignated operating funds balance is a measure of its financial health at the end of the school year. It can be either positive or negative. A positive balance represents a financial cushion; a negative balance means that liabilities (debt) exceed assets. Districts with a negative balance greater than 2.5 percent of their prior years operating expenditures are defined as being in violation of expenditure limitations as specified by Minnesota Statute and are required to submit a final plan to the Commissioner of Education defining their plan to eliminate the deficit. By contrast, districts with positive net operating fund balances which **exceed** \$600 per pupil unit will have their following year's general education revenue reduced.

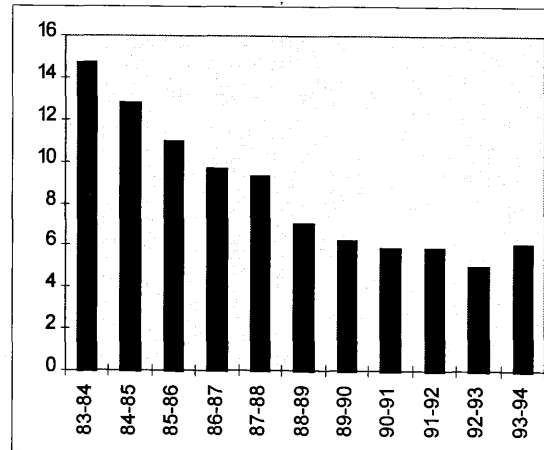
Figure 13 shows the state average operating funds balance, as a percentage of operating expenditures for the past decade. The ratio declined dramatically until 1993-94 when a modest rebound occurred.

Although some districts were forced to *spend down*; much of the decline is the result of districts choosing to dip into their financial cushion in order to maintain or expand existing levels of service during periods when aid payments did not keep pace with needs.

Figure 14 indicates that during the past decade the number of school districts who exceeded their expenditure limitations increased by over 150 percent.

**FIGURE 13**

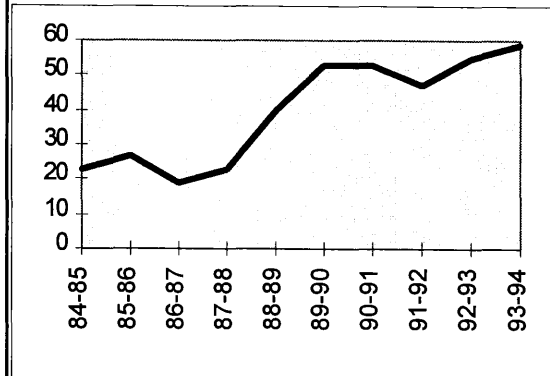
State Average Operating Funds Balance  
As Percent of Operating Expenditures  
1983-84 through 1993-94



Year	Fund Balance	Operating Expenditures	Graph Percent
1983-84	382	2590	14.7
1984-85	360	2808	12.8
1985-86	332	3039	10.9
1986-87	335	3485	9.6
1987-88	343	3684	9.3
1988-89	282	4017	7.0
1989-90	259	4192	6.2
1990-91	258	4398	5.9
1991-92	275	4655	5.9
1992-93	236	4706	5.0
1993-94	285	4746	6.0

**FIGURE 14**

Number of Districts  
Exceeding Expenditure Limitations  
1984-85 through 1993-94



Year	No. of Districts
1984-85	23
1985-86	27
1986-87	19
1987-88	23
1988-89	40
1989-90	53
1990-91	53
1991-92	47
1992-93	55
1993-94	59

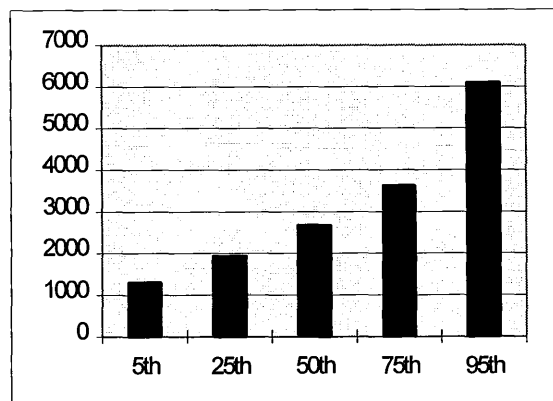
### ADJUSTED NET TAX CAPACITY

A school district's Adjusted Net Tax Capacity per pupil unit is a measure of its real and personal property subject to local property tax levy. There is great disparity in the wealth of school districts. It is these disparities and their effect on the equitable funding of PK-12 education which is the cause of many of the education funding lawsuits beginning in the 70's.

*Figure 15* indicates that the property richest five percent of Minnesota's districts have over four times the Adjusted Net Tax capacity of the property poorest five percent of districts.

**FIGURE 15**

Distribution of Adjusted Net Tax Capacity  
Per Pupil Unit  
1993-94



Definitions of these 38 statistics are given below. All data are for the 1993-94 school year.\* The tables on pages 24 through 57 contain 38 separate statistics for each school district, county and region in the state.

## 1993-94 RESIDENT AVERAGE DAILY MEMBERSHIP

Average daily membership (ADM) is the average number of pupils in membership during the school year. Pupils need not be in attendance to be counted in ADM, but they must be in membership (i.e., currently enrolled in the district). For example, a pupil who is enrolled for the entire school year counts as 1.0 ADM; a pupil who is enrolled for exactly half the school counts as 0.5 ADM.

The ADM counts in this report are, more specifically, counts of total resident ADM including all residents who are:

- a.) enrolled in their home district;
- b.) educated in another district to whom tuition is paid, or
- c.) attending another district under the Enrollment Options law.

Resident membership includes:

1. **Prekindergarten Handicapped** ADM of prekindergarten students enrolled in special education programs.
2. **Kindergarten** ADM of students enrolled in kindergarten classes.
3. **Elementary, Grades 1-6** ADM of students enrolled in grades 1-6, including students in elementary-level ungraded and special education classes.
4. **Secondary, Grades 7-12** ADM of students enrolled in grades 7-12, including students in secondary level ungraded and special education classes.
5. **Total** Total ADM of all district residents, prekindergarten through grade 12; this is the total of columns one through four.

## PUPIL DATA

6. **Percent Minority** The percentage of the district's students who are of Native American, Alaskan, Black, Asian or Hispanic ancestry.
7. **Percent Attendance** The average ratio of days attended to days enrolled for all students in the district.

8. **Percent Transported** The number of resident public school students transported to and from school twenty or more days, as a percentage of the district's resident pupils.

## PROFESSIONAL STAFF

These statistics provide information about each district's professional staff. Staff are counted in full time equivalents (FTE). For example, a full time staff member is counted as 1.0 FTE; one employed only half time is counted as 0.5 FTE. Staff counts include only elementary secondary personnel, postsecondary personnel are excluded.

9. **Total Staff FTE** The total number of licensed professional staff employed by the district, measured in full-time equivalents (FTE). This count includes administrators, classroom teachers and all other licensed professional personnel.
10. **Pupil Staff Ratio** The average daily membership of all students (both residents and nonresidents) who were enrolled in the school district, divided by the number of professional staff (column 9).

\* There are three exceptions to this general rule. The two tax rate statistics (columns 11 and 12) are for taxes payable in calendar year 1994; these taxes will provide revenue for 1994-95. Adjusted Net Tax Capacity (column 38) is based on property values in 1993; this figure will be used in computing state aids and tax levy limitations for the 1995-96 school year.

## TAX CAPACITY RATES

These figures show the tax burden, expressed as a percent of tax capacity, for school district property taxes payable in 1994. Taxes payable in 1994 provide revenue for the 1994-95 school year.

- 11. Auditor Percent** The actual school district tax rate as determined by the county auditor. With a rate of five percent, a property owner would be taxed \$5 for each \$100 of tax capacity. Because of the differences in property assessment levels between counties, comparisons of auditor tax rates among districts may be misleading. This figure includes additional tax rates for special intermediate districts (287, 916 and 917) where they are part of the tax burden.
- 12. Equalized Percent** This tax rate is computed by multiplying the auditor percent (item 11) by the 1993 market sales ratio. This ratio is equal to the market values, as determined by the local assessor, divided by actual selling prices. For state assessed properties, such as utilities, the ratio is 1.00.

Equalized percents are computed to

compensate for varying assessment practices. Thus, when making interdistrict comparisons, these rates provide a more valid comparison.

## PUPIL UNITS (Weighted ADM)

- 13. Resident Pupil Units** This figure is computed by applying weightings to a district's resident average daily membership (as defined above). Each kindergarten ADM counts as .515 pupil unit; each prekindergarten and handicapped kindergarten ADM counts as 1.00 pupil unit. Each elementary ADM counts as 1.03 pupil unit; and each secondary ADM counts as 1.30 pupil unit. Resident pupil units are used in computing the district's general education revenue and property tax limitations.
- 14. Total Pupil Units** This is a count of pupil units which adjusts the resident pupil units in column 13 to better reflect the expenditures reported by the school districts. It includes residents attending the home district, resident students tuitioned to other school districts, nonpublic school students being served via a shared time program, nonresident students who transfer in via one of the attendance options programs,

and nonresident students whose tuition is paid by a parent or out-of-state source

Excluded are pupil units which represent that portion of a student's time spent in a postsecondary institution via the Postsecondary Enrollment Options Program as well as those residents who transfer to other districts via one of the Attendance Options Programs.

## Revenue Percentages

These three columns show the percentage of each district's revenues from the federal government, the state government, and local and other sources. The percentages are based on all 1993-94 revenue reported by each district, except for proceeds from sales of real property and equipment, insurance recoveries, sales of bonds, loans and interfund transfers.

- 15. Federal** The percentage of revenues from the federal government, whether paid directly or through another governmental unit.
- 16. State** The percent of revenues from the Minnesota State government.
- 17. Local and Other** The percentage of revenues from local and other sources. This category includes revenues from property taxes, interest, rent, gifts,



tuition, fees, and other revenue not classified as either federal or state.

## 1993-94 EXPENDITURES PER PUPIL UNIT

Columns 18 through 22 show each district's 1993-94 expenditures in sixteen different categories, divided by total pupil units (column 14). Columns 18 through 30 include all expenditures for the indicated purpose, except related capital expenditures.

### 18. District and School

**Administration** Expenditures for the school board and for the office of the superintendent, principals, and any other line administrators who supervise staff.

### 19. District Support Services

Expenditures for central office administration and central office operations not included in district and school administration (see item 18). Includes expenditures for business services, data processing, legal services personnel office, printing, and the school census.

### 20. Regular Instruction

Expenditures for elementary and secondary classroom instruction, not including

vocational instruction (#21) and exceptional instruction (#22), and for co-curricular and extracurricular activities. Includes salaries of teachers, classroom aides, and coaches, and expenditures for classroom supplies and textbooks.

### 21. Vocational Instruction

Expenditures in secondary schools for instruction that is related to job skills and career exploration. Includes expenditures for home economics, as well as industrial, business, agriculture, and distributive education.

### 22. Exceptional Instruction

Expenditures for instruction of students who, because of atypical characteristics or conditions, are provided educational programs that are different from regular instructional programs. Includes expenditures for special instruction of students who are emotionally or psychologically handicapped, gifted and talented, or mentally retarded; for students with physical, hearing, speech, and visual impairments; and for students with special learning and behavior problems.

### 23. Instructional Support Services

Expenditures for activities intended to help teachers provide instruction, not including expenditures for principals or superintendents. Includes expenditures for assistant principals, curriculum development, libraries, media centers, audio visual support, staff development, and computer assisted instruction.

### 24. Pupil Support Services

Expenditures for all noninstructional services provided to students, not including transportation and food. Includes expenditures for counseling, guidance, health services, psychological services, and attendance and social work services.

### 25. Operations and Maintenance

Expenditures for operation, maintenance, and repair of the district's buildings, grounds, and equipment. Includes expenditures for custodians, fuel for buildings, electricity, telephones, and repairs

### 26. Food Service

Expenditures for the preparation and serving of meals and snacks to students.

### 27. Pupil Transportation

Expenditures for transportation of students,

including salaries, contracted services, fuel for buses, and other expenditures.

**28. Other Operating Programs\***

Expenditures for general fund operating programs necessary to a district's operations but not assignable to other programs. These can include federally funded community education services, property and liability premiums, unemployment insurance premiums, principal and interest on noncapital obligations, and nonrecurring costs such as judgments and liens.

**29. Total PK-12 Operating Expenditures**

The total of the eleven preceding categories of expenditures (columns 18 through 28).

This figure includes all expenditures incurred for the benefit of elementary and secondary education during the 1993-94 school year, except capital and debt service expenditures.

**30. Community Services** Expenditures for recreation, civic activities, adult

education, early childhood education, or similar programs which are not conducted primarily for elementary and secondary students, and for noncredit summer school programs.

**31. Capital Outlay** All capital expenditures charged to the operating funds plus expenditures charged to the district's capital expenditure fund.

**32. Building Construction** All expenditures charged to the district's building construction fund. Expenditures are for major capital projects funded by bond proceeds, state capital loan, state facility grant or the downpayment levy.

**33. Debt Service** Expenditures for repayment of long term debt (see # 37) including payments of principal and interest on bonds and capital loans.

## OTHER MEASURES PER PUPIL UNIT

**34. Operating Fund Balance** This figure is a measure of the district's financial condition at the end of the 1993-94 school year, and of how many resources are available to be used in future years. It is equal to the sum of the undesignated balances on June 30, 1994, from the four operating funds (general, food service, pupil transportation, and community service), excluding the amount of statutory operating debt; this balance is then divided by 1993-94 resident pupil units (column 13).

**35. Change in Fund Balance** The difference between the district's operating funds balance on June 30, 1994 (see A#34 above) and on June 30, 1993 divided by 1993-94 resident pupil units. This is essentially equal to the difference between the district's 1993-94 revenues and expenditures, for the four operating funds combined.

\* Most school districts included all expenditures for employee benefits in the same UFARS programs as the employees' salaries. Thus, for example, health insurance for the superintendent is included with *district and school administration* (column 18) and benefits for teachers are included with instructional programs (columns 20, 21 and 22). Other districts incorrectly report all expenditures for employee benefits separately; for these districts, the expenditures show up in *other operating programs* (column 28). Because of this difference in accounting practices, there is significant variation in the amounts reported in column 28.

Thus, a negative number indicates that the district's expenditures in the operating funds were greater than its revenues.

### 36. **State and Local Operating Costs**

This figure is also called adjusted maintenance cost. it is used to measure that portion of the overall cost of Public PK - 12 education which is financed from state and local sources. It is computed as follows:

Sum of general, food service and agency fund expenditures,

Plus textbook expenditures from the capital expenditure fund,

Minus transfers between funds,

Minus revenue from the federal government,

Minus revenue from sale of food and materials,

Minus admission fees and gate receipts from school activities,

Minus special education tuition

This total is then divided by 1993-94 total pupil units (column 14).

### 37 **Long Term Debt** The amount of long term debt outstanding on June 30, 1994, divided by 1993-94

resident pupil units. Long term debt includes bonds and capital, debt service and energy loans from the state.

Beginning with the 1993-94 school year, ending June, payables for the following will also be included:

- a.) separation and severance pay,
- b.) special assessments,
- c.) capitalied levies and
- d.) compensated absences

### 38. **1992 Adjusted Net Tax Capacity**

The 1993 adjusted net tax capacity of the district divided by 1993-94 resident pupil units. This figure is an indicator of the district's ability to raise revenue through local property taxes.

# MINNESOTA SCHOOL DISTRICTS

DISTRICT NAME	NUMBER	REGION	COUNTY	DISTRICT NAME	NUMBER	REGION	COUNTY	DISTRICT NAME	NUMBER	REGION	COUNTY
Ada	521	1	Norman	Brainerd	181	5	Crow Wing	Columbia Heights	013	11	Anoka
Adrian	511	8	Nobles	Brandon	207	4	Douglas	Comfrey	081	9	Brown
Aitkin	001	3	Aitkin	Breckenridge	846	4	Wilkin	Cook County	166	3	Cook
Albany	745	7W	Stearns	Brewster	513	8	Nobles	Cosmos	461	6E	Meeker
Albert Lea	241	10	Freeborn	Brooklyn Center	286	11	Hennepin	Cottonwood	412	8	Lyon
Alden	242	10	Freeborn	Brooten	737	7W	Stearns	Cromwell	095	3	Carlton
Alexandria	206	4	Douglas	Browerville	787	5	Todd	Crookston	593	1	Polk
Annandale	876	7W	Wright	Browns Valley	801	4	Traverse	Crosby-Ironton	182	5	Crow Wing
Anoka-Hennepin	011	11	Anoka	Browntown	421	6E	McLeod	Cyrus	611	4	Pope
Appleton	784	6W	Swift	Buffalo	877	7W	Wright	Danube	648	6E	Renville
Argyle	437	1	Marshall	Buffalo Lake -	2159	6E	Renville	Dassel - Cokato	466	6E	Meeker
Arlington	731	9	Sibley	Hector				Dawson	378	6W	Lac Qui Parle
Ashby	261	4	Grant	Burnsville	191	11	Dakota	Deek River	317	3	Itasca
Atwater	341	6E	Kandiyohi	Butterfield	836	9	Watsonwan	Delano	879	7W	Wright
Audubon	021	4	Becker	Byron	531	10	Olmsted	Delavan	218	9	Faribault
Austin	492	10	Mower	Caledonia	299	10	Houston	Detroit Lakes	022	4	Becker
Badger	676	1	Roseau	Cambridge - Isanti	911	7E	Isanti	Dilworth	147	4	Clay
Bagley	162	2	Clearwater	Campbell - Tintah	852	4	Wilkin	Dover - Eyota	533	10	Olmsted
Balaton	411	8	Lyon	Canby	891	6W	Yellow Medicine	Duluth	709	3	St. Louis
Barnsville	146	4	Clay	Cannon Falls	252	10	Goodhue	Eagle Bend	790	5	Todd
Barnum	091	3	Carlton	Carlton	093	3	Carlton	East Central	2580	7E	Pine
Barrett	262	4	Grant	Cass Lake	115	5	Cass	East Grand Forks	595	1	Polk
Battle Lake	542	4	Otter Tail	Centennial	012	11	Anoka	Echo	893	6W	Yellow Medicine
Beardsley	057	6W	Big Stone	Ceylon	451	9	Martin	Eden Prairie	272	11	Hennepin
Becker	726	7W	Sherburne	Chandler - Lake	918	8	Murray	Eden Valley -	463	6E	Meeker
Belgrade-Elrosa	736	7W	Stearns	Wilson				Watkins			
Belle Plaine	716	11	Scott	Chaska	112	11	Carver	Edgerton	581	8	Pipestone
Bellingham	371	6W	Lac Qui Parle	Chatfield	227	10	Olmsted	Edina	273	11	Hennepin
Belview	631	8	Redwood	Chisago Lakes	2144	7E	Chisago	Elbow Lake	263	4	Grant
Bemidji	031	2	Beltrami	Chisholm	695	3	St. Louis	Elgin - Millville	806	10	Steele
Benson	777	6W	Swift	Chokio-Alberta	771	4	Stevens	Elk River	728	7W	Sherburne
Bertha-Hewitt	786	5	Todd	Clara City	126	6W	Chippewa	Ellendale - Geneva	762	10	Steele
Big Lake	727	7W	Sherburne	Clarissa	789	5	Todd	Ellsworth	514	8	Nobles
Bird Island-Olivia	2534	6E	Renville	Clarkfield	892	6W	Yellow Medicine	Elmore	219	9	Faribault
Blackduck	032	2	Beltrami	Clearbrook	161	2	Clearwater	Ely	696	3	St. Louis
Blooming Prairie	756	10	Steele	Cleveland	391	9	LeSueur	Emmons	243	10	Freeborn
Bloomington	271	11	Hennepin	Climax	592	1	Polk	Erskine - McIntosh	2609	1	Polk
Blue Earth -	2148	9	Faribault	Clinton - Graceville	055	6W	Big Stone	Esko	099	3	Carlton
Winnebago				Cloquet	094	3	Carlton	Evansville	208	4	Douglas
Borup	522	1	Norman	Cold Spring	750	7W	Stearns	Eveleth-Gilbert	2154	3	St. Louis
Braham	314	7E	Isanti	Coleraine	316	3	Itasca				

## DISTRICT NAME      NUMBER REGION COUNTY

Fairmont	454	9	Martin
Faribault	656	10	Rice
Farmington	192	11	Dakota
Fergus Falls	544	4	Ottertail
Fertile - Beltrami	599	1	Polk
Finlayson	570	7E	Pine
Fisher	600	1	Polk
Floodwood	698	3	St. Louis
Foley	051	7W	Benton
Forest Lake	831	11	Washington
Fosston	601	1	Polk
Franconia	323	7E	Chisago
Franklin	650	6E	Renville
Frazee - Vergas	023	4	Becker
Fridley	014	11	Anoka
Fulda	505	8	Murray
Gary	523	1	Norman
Gaylord	732	9	Sibley
GFW	2365	9	Sibley
Glencoe	422	6E	McLeod
Glenville	245	10	Freeborn
Glyndon - Felton	145	4	Clay
Gonvick	158	2	Clearwater
Goodhue	253	10	Goodhue
Goodridge	561	1	Pennington
Granada-Huntley - East Chain	2536	9	Martin
Grand Meadow	495	10	Mower
Grand Rapids	318	3	Itasca
Granite Falls	894	6W	Yellow Medicine
Greenbush	678	1	Roseau
Grey Eagle	791	5	Todd
Grove City	464	6E	Meeker
Grygla - Gatzke	447	1	Marshall
Hallock - Humbolt	2359	1	Kittson
Halstad - Hendrum	2527	1	Norman
Hancock	768	4	Stevens
Harmony	228	10	Fillmore
Hastings	200	11	Dakota
Hawley	150	4	Clay
Hayfield	203	10	Dodge

## DISTRICT NAME      NUMBER REGION COUNTY

Hendricks	402	8	Lincoln
Henning	545	4	Otter Tail
Herman-Norcross	264	4	Grant
Hermantown	700	3	St. Louis
Heron Lake - Okabena	330	8	Jackson
Hibbing	701	3	St. Louis
Hill City	002	3	Aitkin
Hills - Beaver Creek	671	8	Rock
Hinckley	573	7E	Pine
Hoffman	265	4	Grant
Holdingford	738	7W	Stearns
Hopkins - Golden Valley	270	11	Hennepin
Houston	294	10	Houston
Howard Lake	880	7W	Wright
Hutchinson	423	6E	McLeod
International Falls	361	3	Koochiching
Inver Grove	199	11	Dakota
Isle	473	7E	Mille Lacs
Ivanhoe	403	8	Lincoln
Jackson	324	8	Jackson
Janesville-Waldorf Pemberton	2835	9	Waseca
Jasper	582	8	Pipestone
Jordan	717	11	Scott
Karlstad-Strandquist	2358	1	Kittson
Kasson-Mantorville	204	10	Dodge
Kelliher	036	2	Beltrami
Kennedy	354	1	Kittson
Kensington	209	4	Douglas
Kenyon	254	10	Goodhue
Kerkhoven-Murdock Sunburg	775	6W	Swift
Kimball	739	7W	Stearns
Kingsland	2137	10	Fillmore
LaCrescent	300	10	Houston
Lake Benton	404	8	Lincoln
Lake City	813	10	Wabasha
Lake Crystal - Welcome	2071	9	Blue Earth
Lake of the Woods	390	2	Lake of the Woods
Lake Park	24	4	Becker

## DISTRICT NAME      NUMBER REGION COUNTY

Lake Superior	381	3	Lake
Lakefield	325	8	Jackson
Lakeville	194	11	Dakota
Lamberton	633	8	Redwood
Lancaster	356	1	Kittson
Lanesboro	229	10	Fillmore
Laporte	306	2	Hubbard
LeCenter	392	9	LeSueur
LeRoy	499	10	Mower
Lester Prairie	424	6E	McLeod
LeSueur Henderson	2397	9	LeSueur
Lewiston	857	10	Winona
Litchfield	465	6E	Meeker
Little Falls	482	5	Morrison
Littlefork - Big Falls	362	3	Koochiching
Long Prairie	792	5	Todd
Luverne	670	8	Rock
Lyle	497	10	Mower
Lynd	415	8	Lyon
Mabel-Canton	238	10	Fillmore
Madelia	837	9	Watsonwan
Madison-Marietta -Nassau	2153	6W	Lac Qui Parle
Magnolia	669	8	Rock
Mahnomen	432	2	Mahnomen
Mahtomedi	832	11	Washington
Mankato	077	9	Blue Earth
Maple Lake	881	7W	Wright
Maple River	2135	9	Blue Earth
Marshall	413	8	Lyon
Martin County	2448	9	Martin
Maynard	127	6W	Chippewa
McGregor	004	3	Aitkin
Medford	763	10	Steele
Melrose	740	7W	Stearns
Menahga	821	5	Wadena
Mesabi East	2711	3	St. Louis
Mentor	604	1	Polk
Middle River	440	1	Marshall
Milaca	912	7E	Mille Lacs

DISTRICT NAME	NUMBER	REGION	COUNTY
Milan	128	6W	Chippewa
Milroy	635	8	Redwood
Minneapolis	SP 1	11	Hennepin
Minneota	414	8	Lyon
Minnetonka	276	11	Hennepin
Minnewaska	2149	4	Pope
Montevideo	129	6W	Chippewa
Montgomery-Lonsdale	394	9	LeSueur
Monticello	882	7W	Wright
Moorhead	152	4	Clay
Moose Lake	97	3	Carlton
Mora	332	7E	Kanabec
Morgan	636	8	Redwood
Morris	769	4	Stevens
Morton	652	6E	Renville
Motley	483	6	Morrison
Mounds View	621	11	Ramsey
Mountain Iron - Buhl	712	3	St. Louis
Mountain Lake	173	8	Cottonwood
Nashwauk-Keewatin	319	3	Itasca
Nett Lake	707	3	St. Louis
Nevis	308	2	Hubbard
New London-Spicer	345	6E	Kandiyohi
New Prague	721	11	Scott
New Richland	827	9	Waseca
- Hartland			
New Ulm	088	9	Brown
New York Mills	553	4	Otter Tail
Newfolden	441	1	Marshall
Nicollet	507	9	Nicollet
North Branch	138	7E	Chisago
North St. Paul	622	11	Ramsey
- Maplewood			
Northfield	659	10	Rice
Norwood -	108	11	Carver
Young America			
Ogilvie	333	7E	Kanabec
Oklee	627	1	Red Lake
Onamia	480	7E	Mille Lacs
Orono	278	11	Hennepin
Ortonville	062	6W	Big Stone

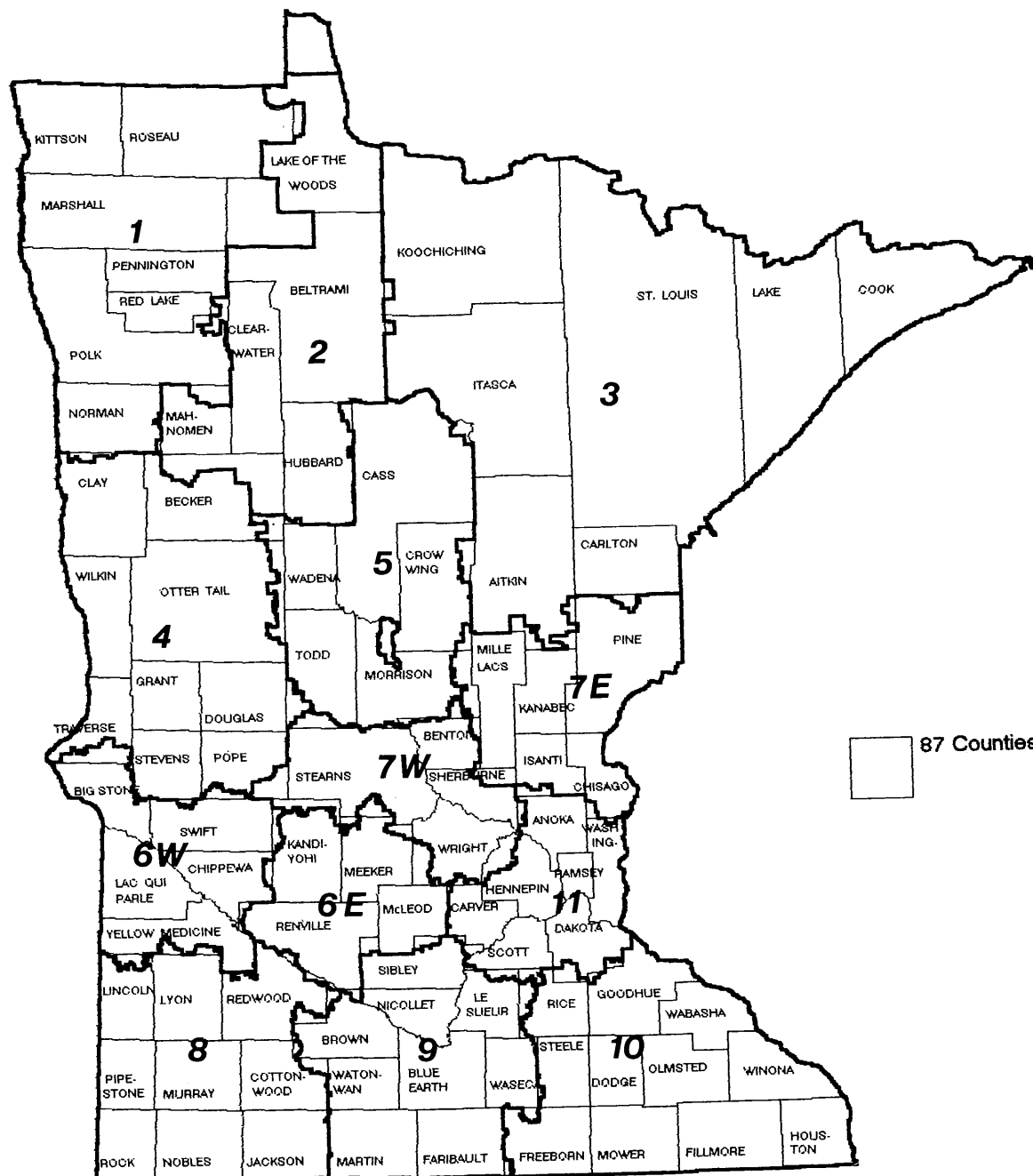
DISTRICT NAME	NUMBER	REGION	COUNTY
Osakis	213	4	Douglas
Oslo	442	1	Marshall
Osseo	279	11	Hennepin
Owatonna	761	10	Steele
Park Rapids	309	2	Hubbard
Parkers Prairie	547	4	Otter Tail
Paynesville	741	7W	Stearns
Pelican Rapids	548	4	Otter Tail
Pequot Lakes	186	5	Crow Wing
Perham	549	4	Otter Tail
Pierz	484	5	Morrison
Pillager	116	5	Cass
Pine City	578	7E	Pine
Pine Island	255	10	Goodhue
Pine Point	025	2	Becker
Pine River - Backus	2174	5	Cass
Pipestone	583	8	Pipestone
Plainview	810	10	Wabasha
Plummer	628	1	Red Lake
Preston-Fountain	233	10	Fillmore
Princeton	477	7E	Mille Lacs
Prinsburg	815	6E	Kandiyohi
Prior Lake	719	11	Scott
Proctor	704	3	St. Louis
Randolph	195	11	Dakota
Raymond	346	6E	Kandiyohi
Red Lake	038	2	Beltrami
Red Lake Falls	630	1	Red Lake
Red Wing	256	10	Goodhue
Redwood Falls	637	8	Redwood
Remer	118	5	Cass
Renville	654	6E	Renville
Richfield	280	11	Hennepin
Robbinsdale	281	11	Hennepin
Rochester	535	10	Olmsted
Rockford	883	7W	Wright
Roseau	682	1	Roseau
Rosemount - Apple	196	11	Dakota
Valley - Eagan			
Roseville	623	11	Ramsey
Rothsay	850	4	Wilkin

DISTRICT NAME	NUMBER	REGION	COUNTY
Round Lake	516	8	Nobles
Royalton	485	5	Morrison
Rush City	139	7E	Chisago
Rushford - Peterson	239	10	Fillmore
Russell	418	8	Lyon
Ruthton	584	8	Pipestone
Sacred Heart	655	6E	Renville
St. Anthony	282	11	Hennepin
- New Brighton			
St. Charles	858	10	Winona
St. Clair	75	9	Blue Earth
St. Cloud	742	7W	Stearns
St. Francis	15	11	Anoka
St. James	840	9	Watonwan
St. Louis County	2142	3	St. Louis
St. Louis Park	283	11	Hennepin
St. Michael-Albertville	885	7W	Wright
St. Paul	625	11	Ramsey
St. Peter	508	9	Nicollet
Sanborn	638	8	Redwood
Sartell	748	7W	Stearns
Sauk Centre	743	7W	Stearns
Sauk Rapids	47	7W	Benton
Sebeka	820	5	Wadena
Shakopee	720	11	Scott
Silver Lake	425	6E	McLeod
Sioux Valley	328	8	Jackson
Slayton	504	8	Murray
Sleepy Eye	84	9	Brown
South Koochiching	363	3	Koochiching
South St. Paul	SP6	11	Dakota
South Washington	833	11	Washington
County			
Southland	500	10	Mower
Spring Grove	297	10	Houston
Spring Lake Park	016	11	Anoka
Springfield	085	9	Brown
Staples	793	5	Todd
Stephen	443	1	Marshall
Stewart	426	6E	McLeod
Stewartville	534	10	Olmstead

DISTRICT NAME	NUMBER	REGION	COUNTY
Stillwater	834	11	Washington
Storden-Jeffers	178	8	Cottonwood
Swanville	486	5	Morrison
Thief River Falls	564	1	Pennington
Tracy	417	8	Lyon
Triton	2125	10	Dodge
Truman	458	9	Martin
Twin Valley	526	1	Norman
Tyler	409	8	Lincoln
Ulen-Hitterdal	914	4	Clay
Underwood	550	4	Otter
United South Central	2134	9	Faribault
Upsala	487	5	Morrison
Verdi	408	8	Lincoln
Verndale	818	5	Wadena
Virginia	706	3	St. Louis
Wabasha	811	10	Wabasha
Wabasso	640	8	Redwood
Waconia	110	11	Carver
Wadena - Deer Creek	2155	5	Wadena
Waldorf - Pemberton	913	9	Waseca
Walker-Akeley	113	5	Cass
Walnut Grove	641	8	Redwood
Wanamingo	258	10	Goodhue
Warren-Alvarado	2163	1	Marshall
Warroad	690	1	Roseau
Waseca	829	9	Waseca
Watertown - Mayer	111	11	Carver
Waterville	2143	9	LeSueur
-Morristown			
Waubun	435	2	Mahnomen
Wayzata	284	11	Hennepin
West St. Paul	197	11	Dakota
Westbrook	175	8	Cottonwood
Westonka	277	11	Hennepin
Wheaton	803	4	Traverse
White Bear Lake	624	11	Ramsey
Willmar	347	6E	Kandiyohi
Willow River	577	7E	Pine

DISTRICT NAME	NUMBER	REGION	COUNTY
Windom	177	8	Cottonwood
Winona	861	10	Winona
Winsted	427	6E	McLeod
Wood Lake	896	6W	Yellow Medicine
Worthington	518	8	Nobles
Wrenshall	100	3	Carlton
Zumbrota - Mazeppa	2805	10	Goodhue

## State of Minnesota Counties 1994





**1993 - 94**  
***School District***  
***Profiles***

**STATISTICAL**  
**TABLES**

County Number and Name School District Name	District Number	1993-94 Resident Average Daily Membership					Pupil Data			Professional Staff		Tax Capacity Rates		Pupil Units (Weighted ADM)	
		1. Pre- Kindergarten Handicapped	2. Kindergarten	3. Elementary (Grades 1-6)	4. Secondary (Grades 7-12)	5. Total (Pre-K thru Grade 12)	6. Percent Minority	7. Percent Attendance	8. Percent Transported	9. Total Staff (FTE)	10. Pupil-Staff Ratio	11. Auditor Percent	12. Equalized Percent	13. Resident Pupil Units	14. Total Pupil Units
O1 AITKIN															
AITKIN	1	10	80	659	649	1,398	2.3	94.7	81	94	14.4	53.74	46.05	1,577	1,536
HILL CITY	2	2	24	181	134	341	7.6	94.6	75	31	12.0	59.98	55.72	376	414
MCGREGOR	4	2	46	307	290	645	9.1	94.2	90	45	13.3	60.65	51.43	719	668
O2 ANOKA															
ANOKA-HENNEPIN	11	258	3,067	18,268	16,342	37,935	5.8	94.0	81	2,230	16.7	57.16	54.70	41,918	41,422
CENTENNIAL	12	30	500	2,733	2,018	5,281	4.9	95.3	76	289	18.5	63.97	57.85	5,726	5,832
COLUMBIA HEIGHTS	13	15	239	1,516	1,388	3,158	13.6	92.4	64	237	12.6	69.16	67.02	3,506	3,376
FRIDLEY	14	13	203	1,170	1,089	2,475	7.1	94.3	83	176	14.8	67.39	65.50	2,738	2,924
SPRING LAKE PARK	16	20	324	1,946	1,741	4,031	5.3	94.5	76	249	16.4	54.79	51.33	4,454	4,581
ST. FRANCIS	15	24	382	2,592	2,144	5,142	3.8	93.7	89	308	16.7	65.40	58.80	5,678	5,720
O3 BECKER															
AUDUBON (ICA)	21	2	23	172	149	346	2.2	95.0	76	26	14.8	49.34	43.47	384	377
DETROIT LAKES	22	32	180	1,351	1,302	2,865	12.0	93.2	72	199	14.7	58.61	51.69	3,215	3,302
FRAZEE	23	14	91	631	632	1,368	7.2	95.3	82	88	14.7	57.65	52.69	1,538	1,465
LAKE PARK (ICA)	24	3	29	175	219	426	.8	93.9	83	26	13.5	60.16	55.40	483	466
PINE POINT (EXP)	25	1	8	56	8	73	100.0	86.3	53	8	5.2	8.39	.00	73	42
O4 BELTRAMI															
BEMIDJII	31	31	427	2,623	2,489	5,570	14.8	91.8	92	382	14.8	59.59	53.75	6,198	6,325
BLACKDUCK	32	4	62	361	345	772	9.4	93.9	87	57	15.2	67.19	61.08	856	972
KELLIHER	36	1	20	128	135	284	15.5	93.7	86	24	12.6	42.92	40.00	318	345
RED LAKE	38	12	151	647	447	1,257	100.0	88.1	70	79	14.1	80.92	79.22	1,340	1,190
O5 BENTON															
FOLEY	51	12	111	835	895	1,853	1.5	93.5	100	110	17.1	58.56	53.18	2,095	2,131
SAUK RAPIDS	47	23	262	1,509	1,427	3,221	.9	94.1	79	204	15.3	65.59	60.15	3,572	3,478
O6 BIG STONE															
BEARDSLEY (ICA)	57		11	79	47	137	19.0	94.4	83	7	14.3	59.38	51.90	148	163
GLINTON-GRACEV'L (ICA)	55	1	42	260	221	524	1.2	96.5	75	41	12.1	48.30	42.41	577	550
ORTONVILLE (ASE)	62	6	38	288	296	628	1.7	96.2	56	56	13.5	46.87	40.26	706	865
O7 BLUE EARTH															
LAKE CRYSTAL-WELLCOME	2071	14	80	551	632	1,277	2.6	93.1	78	93	13.1	65.41	62.40	1,448	1,396
MANKATO	77	52	528	3,441	3,266	7,287	5.1	94.0	62	443	16.6	57.48	50.75	8,125	8,225
MAPLE RIVER	2135	7	90	588	554	1,239	1.1	95.3	78	87	14.2	56.27	54.64	1,385	1,390
ST. CLAIR	75	6	44	259	239	548	.0	96.0	84	34	16.5	72.47	66.09	610	628
O8 BROWN															
COMFREY	81		14	102	139	255	3.3	96.1	79	19	12.5	71.34	64.13	292	279
NEW ULM	88	19	211	1,296	1,309	2,835	2.3	95.2	87	189	15.0	56.40	52.34	3,165	3,177
SLEEPY EYE	84	3	45	331	319	698	16.0	95.4	42	53	13.4	48.35	45.59	783	794
SPRINGFIELD	85	2	53	304	343	702	.1	96.8	51	51	14.3	59.76	56.77	790	818
O9 CARLTON															
BARNUM	91	3	42	323	354	722	4.4	94.7	92	48	14.5	70.91	59.28	819	793
CARLTON	93	3	61	359	387	810	11.4	92.3	91	52	15.1	56.54	49.87	907	897
CLOQUET	94	20	191	1,062	1,081	2,354	14.3	92.4	70	150	16.2	59.10	51.65	2,621	2,736
CROMWELL	95	2	21	137	172	332	.6	95.2	93	22	15.2	72.32	62.48	377	389
ESKO	99	3	82	444	456	985	1.9	95.1	96	60	16.8	59.81	53.47	1,095	1,131
MOOSE LAKE	97	8	61	334	386	789	2.0	94.5	96	58	14.4	58.31	50.27	887	942
WRENSHALL	100	1	32	188	175	396	2.1	95.5	88	32	13.2	62.25	58.20	437	472
Data For School Districts															

District Number	Revenue %			1993 - 94 Expenditures per Pupil Unit																	Other Measures per Pupil Unit									
	15. Federal	16. State	17. Local and Other	18. District and School Admin.	19. District Support Services	20. Regular Instruction	21. Vocational Instruction	22. Exceptional Instruction	23. Instructional Support Services	24. Pupil Support Services	25. Operations and Maintenance	26. Food Service	27. Pupil Transpor- tation	28. Other Oper. Program	29. Total PK-12 Operating Expendi- tures	30. Community Service	31. Capital Outlay	32. Building Construction	33. Debt Service	34. Operating Funds Balance	35. Change in Funds Balance	36. State and Local Oper. Costs	37. Long Term Debt	38. 1993 Adj. Net Tax Capacity						
1	5 54	41		283	249	1885	267	462	160	105	398	196	283	156	4444	77	273	174	175	635	92	3787	538	3,921						
2	8 74	18		371	148	2238	95	705	146	111	347	234	365	43	4803	83	149	0	386	795	229	3853	22211	1,424						
4	9 51	40		379	124	2215	0	715	182	145	436	304	446	459	5404	87	440	66	472	421	80-	3946	5033	4,240						
11	3 62	35		254	108	2069	109	670	155	177	323	227	244	107	4443	196	289	1	176	176	75	4110	2636	2,412						
12	2 68	30		233	101	2016	63	802	179	103	329	161	241	66	4294	106	176	33	4425	191	74	3739	4351	2,163						
13	4 42	54		392	188	2692	85	1145	335	159	518	304	260	110	6188	256	346	0	0	460-	397-	5364	0	4,695						
14	4 51	45		700	170	2263	198	905	215	166	385	241	209	30	5484	279	159	0	3	625	320	4861	314	3,937						
16	3 48	49		172	121	2238	113	658	259	175	415	174	274	136	4735	232	408	0	141	112	24	4025	1299	4,315						
15	3 66	31		200	90	1788	45	968	182	120	312	241	297	71	4314	102	279	269	941	377	140	3699	6416	2,044						
21	10 58	32		363	106	1810	185	701	109	46	388	301	245	69	4322	105	369	0	312	695	187	3461	520	4,107						
22	6 67	27		301	94	2023	67	715	179	128	285	181	369	35	4377	117	169	0	170	628	117	3624	1721	2,566						
23	7 76	17		265	76	1887	189	581	138	87	275	185	382	112	4176	90	232	176	55	458	107	3418	1447	1,393						
24	2 61	37		394	79	1790	171	540	88	1	426	168	274	67	3998	89	524	0	347	485	336	3395	3474	3,066						
25	22 75	3		1038	1222	4516	0	2522	102	1939	2082	1054	284	538	15297	660	3567	0	0	5800	640	2338	107	0						
31	7 68	25		237	79	1940	74	994	145	74	422	217	282	329	4793	159	371	154	890	362	16-	4044	4314	2,043						
32	8 67	25		349	102	2159	129	655	81	33	295	176	345	30	4355	99	217	4495	308	774	160	3590	8198	1,339						
36	9 77	14		399	77	2282	545	551	99	28	453	244	383	90	5153	84	416	0	0	832	316-	4251	1300	1,379						
38	31 66	3		374	502	2837	224	1192	374	62	823	275	469	232	7363	126	382	4267	3	360	196	4234	8288	20						
51	5 77	18		243	67	2012	68	467	161	88	269	203	208	88	3873	126	141	0	302	382	43	3277	5305	1,150						
47	3 68	29		226	80	2001	40	706	203	95	269	208	345	66	4240	153	168	357	178	313	10	3507	5252	2,097						
57	3 55	42		484	197	1987	0	213	91	71	310	241	369	87	4050	65	146	0	0	979	92	3503	157	3,246						
55	8 59	33		346	98	2315	17	839	130	97	340	248	348	59	4836	131	298	0	0	97	138-	3928	8	3,797						
62	4 68	28		301	126	1914	313	713	91	80	370	230	262	180	4580	212	417	0	48	411-	87-	3931	256	1,925						
2071	4 63	33		315	98	2270	75	621	226	74	317	200	383	70	4648	127	351	0	0	289	130	3901	62	2,480						
77	4 57	39		221	90	1987	74	674	162	105	367	184	206	69	4138	182	264	1074	2373	362	123	3604	3172	3,659						
2135	4 61	35		320	122	1940	57	529	134	79	381	182	258	135	4137	108	234	0	0	412	798	3501	28	2,887						
75	3 68	29		268	132	2222	0	633	229	28	452	229	426	96	4714	129	205	2899	293	164	49-	3923	3710	2,121						
81	6 46	48		307	169	2554	86	536	77	83	380	227	185	178	4782	90	428	0	0	43	120	4029	216	3,898						
88	3 63	34		243	74	2018	105	548	242	122	314	225	364	112	4365	139	270	0	0	514	91	3694	195	2,799						
84	5 56	39		308	105	1858	177	660	136	84	282	191	419	60	4281	207	314	0	264	731	175	3362	511	3,944						
85	4 56	40		289	62	2087	170	403	95	73	160	213	238	34	3823	124	183	1689	561	1209	118-	3258	7230	2,690						
91	4 74	22		354	85	1952	130	454	198	135	302	212	255	114	4191	153	570	0	317	602	173	3553	9931	1,192						
93	3 71	26		299	169	2008	21	560	160	123	367	187	265	85	4244	80	258	0	93	541-	25-	3685	508	2,114						
94	9 62	29		299	169	2091	85	931	171	142	355	170	277	117	4806	269	219	0	249	448	4-	3924	3672	2,810						
95	4 71	25		275	245	1825	129	429	180	55	469	205	291	94	4194	78	414	2197	8176	347	138	3533	19501	1,939						
99	2 76	22		306	52	2078	71	566	155	89	297	117	258	89	4078	90	267	0	1226	141	15-	3595	1302	1,778						
97	3 67	30		332	124	2109	95	580	139	157	362	135	243	44	4321	82	358	0	503	693	147	3805	6927	2,064						
100	3 61	36		424	337	1915	233	509	75	223	378	182	289	0	4566	110	424	183	19	191	256-	4045	197	2,858						
Data For School Districts			1993-94 Profiles																							Page 26				

Data For School Districts

1993-94 Profiles

Page 26

SCHOOL DISTRICTS

County Number and Name School District Name	District Number	1993-94 Resident Average Daily Membership					Pupil Data			Professional Staff		Tax Capacity Rates		Pupil Units (Weighted ADM)	
		1. Pre- Kindergarten Handicapped	2. Kindergarten	3. Elementary (Grades 1-6)	4. Secondary (Grades 7-12)	5. Total (Pre-K thru Grade 12)	6. Percent Minority	7. Percent Attendance	8. Percent Transported	9. Total Staff (FTE)	10. Pupil-Staff Ratio	11. Auditor Percent	12. Equalized Percent	13. Resident Pupil Units	14. Total Pupil Units
10 CARVER															
CHASKA	112	35	421	2,600	2,024	5,080	3.5	92.6	90	299	16.7	62.88	57.35	5,569	5,561
NORWOOD	108	6	56	453	533	1,048	2.1	95.7	70	83	12.5	73.85	64.18	1,197	1,190
WACONIA	110	14	95	642	652	1,403	1.8	94.7	94	93	15.2	83.48	73.13	1,573	1,601
WATERTOWN-MAYER	111	12	82	632	628	1,354	1.6	94.6	96	84	15.7	67.29	57.13	1,522	1,483
11 CASS															
CASS LAKE	115	7	79	438	416	940	68.3	90.3	74	74	12.6	76.91	69.68	1,043	1,058
PILLAGER	116	8	50	293	273	624	3.2	92.1	82	42	13.0	60.44	54.70	693	605
PINE RIVER-BACKUS	2174	12	94	619	583	1,308	2.5	94.4	88	96	13.2	57.08	47.89	1,459	1,410
REMER	118	4	44	245	291	584	15.5	91.7	85	45	12.8	58.02	50.48	656	656
WALKER-AKELEY	113	8	75	543	456	1,082	13.2	92.8	79	76	13.1	55.76	48.17	1,200	1,115
12 CHIPPEWA															
CLARA CITY (ICA)	126	3	35	190	201	429	4.5	94.7	97	35	12.9	61.69	.00	479	468
MAYNARD (ICA)	127		23	128	103	254	4.5	96.3	80	21	12.8	51.20	.00	279	263
MILAN (CSF)	128	3	20	114	116	253	9.4	95.4	74	7	20.1	64.95	49.11	281	321
MONTEVIDEO	129	9	112	723	790	1,634	1.3	93.7	60	123	14.0	67.92	59.77	1,838	1,935
13 CHISAGO															
CHISAGO LAKES	2144	17	238	1,534	1,373	3,162	1.6	92.6	92	177	17.6	56.85	51.28	3,507	3,460
FRANCONIA (NONOPER)	0323		1	18	13	32	.0	.0	100	0	.0	42.90	37.32	35	21
NORTH BRANCH	138	10	228	1,393	1,252	2,883	.9	92.0	97	157	18.3	56.92	50.22	3,189	3,203
RUSH CITY	139	4	65	410	367	846	2.5	93.9	78	57	14.6	73.88	68.04	936	929
14 CLAY															
BARNESVILLE	146	2	49	365	426	842	1.9	96.3	61	51	16.0	64.80	57.73	958	935
DILWORTH(ASE)	147	3	51	263	242	559	10.9	94.3	33	39	13.3	53.75	.00	615	627
GLYNDON(ASE)	145	5	56	342	302	705	5.3	94.2	74	52	13.7	51.47	.00	780	753
HAWLEY	150	5	52	356	387	800	.8	96.2	64	57	14.9	76.37	68.51	902	952
MOORHEAD	152	29	462	2,986	2,570	6,047									

## **SCHOOL DISTRICTS**

District Number	Revenue %			1993 - 94 Expenditures per Pupil Unit																			Other Measures per Pupil Unit				
	15. Federal	16. State	17. Local and Other	18. District and School Admin.	19. District Support Services	20. Regular Instruction	21. Vocational Instruction	22. Exceptional Instruction	23. Instructional Support Services	24. Pupil Support Services	25. Operations and Maintenance	26. Food Service	27. Pupil Transpor- tation	28. Other Oper. Program	29. Total PK-12 Operating Expendi- tures	30. Community Service	31. Capital Outlay	32. Building Construction	33. Debt Service	34. Operating Funds Balance	35. Change in Funds Balance	36. State and Local Oper. Costs	37. Long Term Debt	38. 1993 Adj. Net Tax Capacity			
112	2	63	35	306	128	1892	29	772	299	142	302	143	405	52	4470	133	204	1305	158	146	9	3809	12576	3,124			
108	3	59	38	329	89	1910	76	927	131	103	390	190	223	81	4448	208	134	575	405	282	55	3867	7118	3,363			
110	2	44	54	296	80	2100	98	666	88	160	279	190	411	53	4422	187	208	4865	8442	740	364	3695	9763	4,267			
111	3	64	33	261	74	1748	84	612	157	67	299	217	305	156	3980	145	166	49	2333	109	367	3325	4354	2,720			
115	16	56	28	445	187	2289	71	1225	395	91	408	240	445	112	5910	149	214	5341	628	193	98	4239	15103	2,902			
116	5	42	53	367	94	2168	20	583	157	139	292	254	342	76	4495	156	188	165	512	741	108	3784	5031	4,729			
2174	8	60	32	328	117	2112	55	756	116	75	366	202	259	58	4443	86	420	0	2505	560	10	3706	2750	3,472			
118	7	31	62	193	164	2289	97	890	429	146	409	180	413	69	5279	140	755	0	131	729	144	4340	294	8,509			
113	8	41	51	234	88	2275	39	1067	223	131	308	240	323	53	4981	122	740	0	171	510	207	4092	429	5,445			
126	1	63	36	298	140	2031	102	650	127	57	445	187	399	144	4581	97	272	0	0	918	607	3854	40	3,330			
127	14	53	33	327	141	2003	43	1538	127	92	399	236	374	63	5343	128	627	0	0	896	201	3960	0	4,227			
128	5	58	37	213	103	1433	84	467	97	119	361	293	231	190	3593	185	144	0	0	767	196	2834	116	2,980			
129	7	66	27	246	55	1910	177	692	124	37	294	431	199	58	4223	189	273	256	50	665	81	3468	6085	2,006			
2144	2	71	27	238	154	1936	129	504	157	125	277	188	183	55	3945	155	343	0	426	253	107	3519	1325	2,134			
0323	0	59	41	0	125	4369	0	0	0	0	0	0	346	0	4839	0	0	0	0	682	1638	4493	0	1,600			
138	3	74	23	234	164	1715	110	627	209	87	331	171	255	115	4018	105	453	0	389	190	55	3494	4902	1,636			
139	5	61	34	314	97	2010	130	502	141	50	314	249	194	68	4069	242	517	1884	793	428	125	3502	9843	2,057			
146	5	60	35	369	72	2101	64	511	192	21	329	232	279	264	4434	170	324	0	363	14	105	3639	6210	2,557			
147	3	86	11	287	110	2054	47	474	179	98	237	147	122	66	3823	155	199	261	141	753	172	3486	4228	1,010			
145	5	64	31	231	92	2173	48	851	192	100	295	160	410	84	4637	216	304	325	47	62	115	3819	5149	3,129			
150	2	79	19	279	91	2512	51	271	28	76	308	154	159	76	4006	135	134	0	234	553	24	3580	1961	1,328			
152	5	75	20	222	102	1955	59	1145	226	120	235	144	255	120	4583	122	248	541	147	410	101	3971	1488	2,277			
914	5	63	32	378	116	2101	194	763	140	69	445	212	293	73	4784	149	706	0	0	416	82	4097	40	2,266			
162	7	76	17	235	69	2043	85	673	224	92	273	200	290	150	4333	74	195	250	0	349	133	3594	8861	1,900			
161	6	61	33	332	137	2158	12	457	137	103	297	218	397	89	4338	157	196	0	0	745	263	3546	59	3,940			
158	8	47	45	466	59	2422	239	630	107	80	440	348	508	7	5306	167	606	0	0	804	113	4073	798	6,128			
166	6	32	62	338	115	2417	17	592	135	104	426	141	250	103	4637	165	292	0	0	731	311	3931	297	7,717			
173	5	52	43	348	62	1971	216	786	144	160	472	211	122	140	4632	268	515	0	0	1267	167	4179	916	3,682			
178	6	46	48	527	165	2299	178	508	107	7	427	276	292	98	4884	28	254	0	0	260	353	4178	0	5,354			
175	2	47	51	488	151	2280	131	262	170	45	474	233	408	132	4773	135	475	0	0	350	72	4044	18	5,181			
177	4	53	43	317	131	2402	65	1062	127	159	384	214	183	140	5185	163	267	0	92	513	272	4645	1079	2,948			
181	6	55	39	220	67	1875	225	824	216	92	324	204	274	78	4399	124	238	19	143	339	10	3980	1832	2,915			
182	4	49	47	190	74	2187	93	692	114	204	396	175	370	123	4618	77	342	36	585	15	24	3881	6674	4,085			
186	4	12	84	297	92	2001	54	428	148	83	328	224	243	30	3926	82	197	0	1267	317	137	3292	841	9,961			



County Number and Name School District Name	District Number	1993-94 Resident Average Daily Membership					Pupil Data			Professional Staff		Tax Capacity Rates		Pupil Units (Weighted ADM)	
		1. Pre- Kindergarten Handicapped	2. Kindergarten	3. Elementary (Grades 1-6)	4. Secondary (Grades 7-12)	5. Total (Pre-K thru Grade 12)	6. Percent Minority	7. Percent Attendance	8. Percent Transported	9. Total Staff (FTE)	10. Pupil-Staff Ratio	11. Auditor Percent	12. Equalized Percent	13. Resident Pupil Units	14. Total Pupil Units
19 DAKOTA															
BURNSVILLE	191	78	904	5,374	4,325	10,681	10.8	93.3	86	707	15.1	75.75	70.74	11,704	11,911
FARMINGTON	192	45	271	1,561	1,253	3,130	1.8	95.0	91	190	16.2	71.91	66.54	3,433	3,440
HASTINGS	200	25	347	2,192	2,451	5,015	2.5	93.9	92	297	16.9	60.41	55.28	5,654	5,723
INVER GROVE	199	31	290	2,001	1,644	3,966	6.3	93.7	78	269	14.2	71.42	68.32	4,388	4,319
LAKEVILLE	194	32	571	3,254	2,397	6,254	2.9	94.8	96	411	15.1	75.32	69.45	6,798	6,822
RANDOLPH	195		21	170	198	389	1.1	94.8	90	31	12.0	67.11	58.32	444	430
ROSEMOUNT-APPLE VALLE	196	146	2,102	12,187	9,631	24,066	6.8	94.6	88	1,468	16.2	60.94	57.33	26,338	26,243
SOUTH ST. PAUL	SP6	32	216	1,603	1,468	3,319	6.8	91.4	72	198	17.6	57.67	58.99	3,714	3,974
WEST ST. PAUL-MENDOTA	197	37	380	2,348	1,931	4,696	12.6	93.7	88	320	14.5	64.63	63.54	5,172	5,228
20 DODGE															
HAYFIELD	203	11	55	489	470	1,025	2.2	94.3	71	72	14.6	51.86	45.64	1,155	1,188
KASSON-MANTORVILLE	204	9	112	788	719	1,628	1.9	95.7	98	110	14.9	48.62	42.49	1,814	1,829
TRITON	2125	12	88	646	569	1,315	4.2	94.7	69	95	12.9	58.79	51.44	1,467	1,382
21 DOUGLAS															
ALEXANDRIA	206	32	270	1,908	2,000	4,210	1.4	93.9	83	271	15.5	61.86	58.40	4,743	4,777
BRANDON	207	4	22	173	207	406	1.2	94.9	75	26	16.3	44.30	41.51	464	476
EVANSVILLE	208	1	16	166	145	328	.7	95.3	66	22	13.7	46.17	43.03	368	337
KENSINGTON (ICA)	209	1	13	75	85	174	2.4	94.9	77	16	15.2	69.19	56.43	194	185
OSAKIS	213	3	42	258	316	619	.5	94.8	79	44	14.7	65.40	59.51	701	742
22 FARIBAULT															
BLUE EARTH (ASE)	2148	12	95	704	695	1,506	7.0	95.7	55	115	14.5	59.59	53.98	1,690	1,909
DELANAN (ASE)	218	2	14	84	78	178	8.5	95.2	82	12	8.3	68.48	64.22	198	196
ELMORE (ASE)	219	4	6	79	97	186	7.9	94.1	64	9	9.6	61.81	56.88	214	205
UNT SOUTH CENTRAL (AS	2134	15	84	529	599	1,227	4.8	94.9	62	87	13.5	56.91	54.29	1,383	1,334
23 FILLMORE															
HARMONY (ICA)	228	3	28	195	172	398	2.6	93.1	88	26	10.5	63.44	55.38	442	436
KINGSLAND	2137	6	78	468	481	1,033	1.0	94.8	88	82	12.3	62.			

District Number	Revenue %			1993 - 94 Expenditures per Pupil Unit																			Other Measures per Pupil Unit				
	15. Federal	16. State	17. Local and Other	18. District and School Admin.	19. District Support Services	20. Regular Instruction	21. Vocational Instruction	22. Exceptional Instruction	23. Instructional Support Services	24. Pupil Support Services	25. Operations and Maintenance	26. Food Service	27. Pupil Transpor- tation	28. Other Oper. Program	29. Total PK-12 Operating Expendi- tures	30. Community Service	31. Capital Outlay	32. Building Construction	33. Debt Service	34. Operating Funds Balance	35. Change in Funds Balance	36. State and Local Oper. Costs	37. Long Term Debt	38. 1993 Adj. Net Tax Capacity			
191	2 50	48		276	134	2428	108	827	158	165	425	177	244	102	5043	334	241	31	132	387	83	4528	1484	4,057			
192	3 68	29		339	100	1898	38	679	133	178	391	228	350	86	4419	106	260	418	648	237	29	3741	13656	2,054			
200	3 60	37		322	62	2174	36	575	155	131	363	204	309	50	4381	156	217	0	144	291	161	3720	1881	2,972			
199	3 50	47		344	121	2403	22	853	178	207	376	216	231	122	5072	208	390	0	246	521	42	4473	2683	3,615			
194	2 54	44		309	142	1909	48	607	178	122	371	193	314	101	4295	194	428	2616	851	34	43	3662	14979	3,352			
195	3 51	46		417	137	2750	63	641	101	80	374	172	282	41	5058	168	121	0	0	433	88	4110	134	3,347			
196	2 59	39		225	114	2121	48	497	208	87	281	140	185	33	3940	127	215	553	697	264	31	3541	8095	3,141			
SP6	4 58	38		276	215	2041	16	710	180	227	457	219	296	252	4890	350	1370	1668	321	335	289	4246	4258	2,837			
197	3 4	93		303	86	2066	33	726	265	163	391	225	299	112	4669	213	420	193	160	229	477	3976	3976	8,299			
203	5 72	23		266	69	1907	96	621	166	74	286	243	298	100	4126	103	138	0	12	218	108	3424	21	2,201			
204	2 81	17		322	43	1996	70	601	154	111	252	170	191	117	4027	92	455	106	264	260	185	3582	2318	1,580			
2125	3 70	27		363	118	2195	44	715	102	79	355	237	244	99	4550	176	308	0	0	565	19	3912	21	2,375			
206	5 58	37		179	57	2057	58	646	155	135	302	201	205	80	4076	116	319	2591	919	291	15	3515	4397	3,231			
207	7 74	19		269	63	2212	11	427	149	69	246	212	302	29	3989	63	254	0	874	607	280	3345	657	1,537			
208	7 70	23		374	66	2051	127	307	159	58	295	232	179	33	3922	91	354	0	0	608	55	3336	0	1,767			
209	4 59	37		360	185	2391	45	400	171	81	401	253	306	404	4996	192	280	0	0	279	164	4205	0	1,844			
213	6 65	29		302	72	1940	141	568	122	139	378	199	252	56	4168	98	371	0	5742	201	276	3509	12248	2,037			
2148	4 58	38		283	63	1981	126	573	198	129	302	186	167	79	4087	157	322	0	0	390	149	3626	213	2,719			
218	5 40	55		405	177	3078	0	447	47	16	395	164	487	70	5285	306	402	0	0	1009	42	4451	0	5,193			
219	6 53	41		198	219	2577	0	410	35	3	381	115	202	122	4261	127	441	0	0	1189	399	3686	79	3,633			
2134	5 57	38		376	86	2171	55	647	136	92	394	225	331	110	4624	123	359	12	47	22	101	3917	503	3,361			
228	1 71	28		420	80	2292	57	436	190	66	393	174	252	83	4442	106	473	0	0	407	3	3938	43	2,464			
2137	4 75	21		330	83	2276	87	667	149	96	336	244	257	91	4615	162	381	0	0	190	88	3907	54	1,780			
229	6 69	25		297	113	2077	269	772	67	39	213	244	327	59	4476	232	151	0	3829	907	256	3427	3900	1,718			
238	8 64	28		353	142	2223	131	708	210	95	372	242	277	151	4905	125	408	0	0	239	64	4029	148	2,133			
233	7 71	22		378	104	2304	58	753	205	43	416	270	218	76	4825	91	324	0	437	283	504	4054	4822	1,542			
239	6 77	17		338	80	1881	103	632	89	55	318	247	246	72	4059	79	281	0	0	191	131	3360	192	1,619			
241	4 70	26		267	94	2056	74	753	159	159	379	181	242	187	4551	101	351	1	133	147	23	3999	1149	2,270			
242	4 66	30		406	113	2199	247	326	177	79	323	185	289	44	4387	54	120	0	0	411	218	3643	40	3,139			
243	4 63	33		431	187	2249	0	370	143	67	809	272	245	62	4836	105	355	0	0	589	288	4244	145	2,763			
245	4 64	32		325	184	2262	161	479	191	65	442	207	185	69	4570	62	174	0	0	355	36	4065	20	2,707			
252	2 64	34		250	66	2004	67	403	128	120	351	220	216	143	3967	138	221	0	483	146	267	3481	3827	2,463			
253	4 66	30		341	87	2125	157	415	180	61	291	231	373	74	4336	64	323	78	0	513	74	3607	3302	2,331			
254	3 66	31		323	74	2139	91	459	144	43	340	252	371	150	4387	337	586	0	0	170	228	3692	315	2,545			
255	2 75	23		251	92	1974	162	484	135	137	281	172	138	95	3920	92	248	2	1607	207	68	3509	5887	1,684			
256	3 23	74		255	69	2079	126	877	235	172	303	195	255	138	4705	207	466	2669	741	180	16	4136	9665	8,719			
258	5 67	28		369	112	2308	71	414	170	45	344	271	331	103	4538	141	486	0	0	231	176	3833	287	2,872			
2805	3 68	29		282	60	2059	211	665	225	63	317	234	246	63	4426	114	448	198	416	501	89	3667	719	2,033			
Data For School Districts			1993-94 Profiles																						Page 30		

County Number and Name School District Name	District Number	1993-94 Resident Average Daily Membership					Pupil Data			Professional Staff		Tax Capacity Rates		Pupil Units (Weighted ADM)	
		1. Pre- Kindergarten Handicapped	2. Kindergarten	3. Elementary (Grades 1-6)	4. Secondary (Grades 7-12)	5. Total (Pre-K thru Grade 12)	6. Percent Minority	7. Percent Attendance	8. Percent Transported	9. Total Staff (FTE)	10. Pupil-Staff Ratio	11. Auditor Percent	12. Equalized Percent	13. Resident Pupil Units	14. Total Pupil Units
26 GRANT															
ASHBY	261		22	134	152	308	.6	95.4	87	20	17.4	55.08	45.60	347	389
BARRETT (ICA)	262		8	63	62	133	2.0	94.4	83	4	38.1	55.98	36.88	149	151
ELBOW LAKE (ICA)	263	2	28	249	216	495	1.0	93.9	71	32	12.6	62.81	42.49	553	549
HERMAN-NORCROSS	264	1	16	114	140	271	2.5	95.8	56	24	9.8	73.04	62.08	309	270
HOFFMAN (ICA)	265	1	18	122	119	260	2.0	93.9	95	14	17.3	72.90	53.15	291	296
27 HENNEPIN															
BLOOMINGTON	271	54	938	5,347	5,214	11,553	14.0	94.2	100	662	17.1	58.51	52.50	12,833	12,907
BROOKLYN CENTER	286	5	168	677	586	1,436	27.8	92.7	73	106	16.1	57.42	60.75	1,550	1,933
EDEN PRAIRIE	272	25	782	4,190	3,112	8,109	5.3	95.2	100	516	15.7	62.64	62.20	8,788	8,934
EDINA	273	31	422	2,822	2,443	5,718	5.0	94.7	100	359	16.3	69.18	68.09	6,331	6,502
HOPKINS	270	43	586	3,675	3,252	7,556	7.3	93.7	97	556	14.1	68.15	67.07	8,357	8,847
MINNEAPOLIS	SP1	329	4,535	22,484	15,641	42,989	59.0	88.9	94	3,424	12.4	68.72	72.98	46,236	46,074
MINNETONKA	276	39	550	3,511	2,875	6,975	4.4	95.1	100	457	14.8	77.32	69.86	7,679	7,640
ORONO	278	11	165	1,018	996	2,190	3.1	92.9	100	154	15.8	65.84	58.01	2,441	2,751
OSSEO	279	103	1,767	10,234	8,839	20,943	12.6	94.0	69	1,324	15.6	67.60	66.85	23,072	22,962
RICHFIELD	280	26	370	2,089	1,963	4,448	19.0	93.4	84	299	14.4	67.01	66.73	4,924	4,934
ROBBINSDALE	281	66	1,234	6,912	6,113	14,325	13.8	93.4	75	905	15.3	65.21	64.14	15,790	15,682
ST. ANTHONY-NEW BRIGH	282	2	80	448	418	948	11.2	93.9	90	85	13.4	66.48	66.08	1,048	1,251
ST. LOUIS PARK	283	57	342	2,113	1,893	4,405	11.0	93.6	84	289	14.7	69.09	61.59	4,878	4,819
WAYZATA	284	39	616	3,684	3,300	7,639	6.4	95.3	99	429	17.7	60.48	64.02	8,449	8,546
WESTONKA	277	13	208	1,233	1,208	2,662	4.6	94.0	91	147	16.1	67.79	60.95	2,967	2,690
28 HOUSTON															
CALEDONIA	299	2	69	418	474	963	1.7	95.6	60	72	13.5	62.02	53.52	1,085	1,097
HOUSTON	294	1	41	239	271	552	.4	95.3	62	36	14.7	66.49	59.18	620	601
LACRESCENT-HOKAH	300	9	85	601	721	1,416	1.8	96.3	77	97	15.4	64.29	55.03	1,610	1,692
SPRING GROVE	297	1	28	219	235	483	1.7	96.0	54	37	12.9	68.80	59.58	547	542
29 HUBBARD															
LAPORTE	306	2	23	138	129	292	8.9	93.6	100	27	14.0	70.55	59.96	326	433
NEVIS	308	1	23	157	170	351	1.4	93.4	100	28	15.3	61.50	51.48	397	483
PARK RAPIDS	309	21	119	924	893	1,957	7.2	92.8	90	139	14.1	55.76	48.23	2,198	2,219
30 ISANTI															
BRAHAM	314	9	78	533	484	1,104	1.8	93.5	85	66	16.0	69.24	65.01	1,228	1,181
CAMBRIDGE-ISANTI	911	29	334	2,157	1,905	4,425	2.8	92.1	88	266	17.1	50.86	47.20	4,908	5,072
31 ITASCA															
COLERAINE	316	7	106	727	785	1,625	4.3	94.0	77	91	16.4	59.09	52.06	1,831	1,700
DEER RIVER	317	4	79	551	527	1,161	22.8	92.8	94	72	16.0	40.92	36.91	1,300	1,296
GRAND RAPIDS	318	21	311	2,210	2,396	4,938	5.8	93.3	95	342	14.6	56.09	51.88	5,577	5,735
NASHWAUK-KEEWATIN	319	6	54	322	375	757	3.6	93.6	83	45	16.1	32.02	27.73	853	828
32 JACKSON															
HERON LAKE (ICA)	330	1	23	180	192	396	3.7	96.0	73	33	11.8	59.43	56.05	449	438
JACKSON	324	8	81	505	499	1,093	7.6	95.5	59	79	13.8	54.01	50.56	1,221	1,213
LAKEFIELD (ICA)	325	3	27	205	226	461	.4	94.4	58	36	12.5	65.30	60.34	521	519
SIoux VALLEY (ICA)	328	1	6	42	29	78	.6	95.4	87	12	13.2	73.42	69.46	84	85
33 KANABEC															
MORA	332	14	118	946	867	1,945	3.1	94.4	80	124	15.5	64.00	59.84	2,176	2,143
OGILVIE	333	3	64	352	338	757	2.3	92.1	100	47	16.4	60.97	57.86	839	861
Data For School Districts															



District Number	Revenue %			1993 - 94 Expenditures per Pupil Unit																	Other Measures per Pupil Unit							
	15. Federal	16. State	17. Local and Other	18. District and School Admin.	19. District Support Services	20. Regular Instruction	21. Vocational Instruction	22. Exceptional Instruction	23. Instructional Support Services	24. Pupil Support Services	25. Operations and Maintenance	26. Food Service	27. Pupil Transpor- tation	28. Other Oper. Program	29. Total PK-12 Operating Expendi- tures	30. Community Service	31. Capital Outlay	32. Building Construction	33. Debt Service	34. Operating Funds Balance	35. Change in Funds Balance	36. State and Local Oper. Costs	37. Long Term Debt	38. 1993 Adj. Net Tax Capacity				
261	4 77	19		318	119	1925	94	478	298	105	307	182	240	71	4136	103	309	6	314	292	337-	3626	1890	1,803				
262	3 72	25		304	138	2078	39	332	148	70	333	206	261	344	4253	148	206	0	0	104	96-	3630	0	3,003				
263	4 62	34		334	173	2370	158	489	159	75	366	213	278	286	4900	180	178	0	0	336-	236-	4152	140	3,644				
264	5 50	45		561	51	2691	229	442	220	83	478	266	264	162	5447	263	260	0	0	198-	75-	4686	121	4,770				
265	10 71	19		314	162	2104	39	699	151	71	353	214	269	254	4632	169	529	0	0	310-	343-	3758	0	2,367				
271	2 28	70		615	201	2056	64	731	223	187	359	209	259	137	5041	492	361	47	50	636	700	4463	1060	7,841				
286	5 40	55		259	266	1354	142	862	931	113	396	229	167	111	4831	234	382	0	191	1224-	1537-	4338	3554	4,292				
272	2 39	59		264	190	2124	60	676	266	119	423	175	233	92	4621	184	397	1932	1008	421	71	4134	11374	5,809				
273	1 3	96		328	230	2488	22	579	287	137	602	142	238	223	5276	441	516	3288	579	46	97	4811	6600	8,802				
270	2 8	90		267	210	2560	92	979	346	263	399	181	290	300	5885	380	237	210	134	305	625	5307	8512	8,507				
SP1	7 43	50		440	243	2642	106	1562	205	269	427	246	444	268	6852	242	656	200	287	144	54	5807	1314	5,693				
276	2 41	57		260	214	2576	118	795	348	204	485	196	317	123	5635	303	349	542	261	567	100	5017	4167	5,545				
278	2 35	63		257	163	2390	100	675	192	144	416	203	391	240	5171	253	399	598	301	554	206	4426	4757	7,334				
279	3 58	39		287	197	2196	121	758	196	102	327	180	254	51	4668	140	233	209	469	557	12-	4143	7567	2,905				
280	3 39	58		340	159	2302	68	928	191	264	510	174	191	178	5305	160	253	1552	0	322	117	4773	8625	5,950				
281	3 47	50		246	154	2232	165	844	201	198	455	192	271	197	5156	298	346	0	21	157	97	4555	0	4,453				
282	2 36	62		388	195	2881	54	673	217	153	498	61	144	145	5408	515	174	0	0	109-	181-	5732	460	6,403				
283	2 30	68		309	262	2426	71	1141	510	234	676	190	338	82	6238	604	441	1545	342	868	60-	5589	3218	8,235				
284	4 32	64		396	313	2023	12	635	151	178	404	165	265	129	4670	262	238	70	515	138-	154	3969	9253	6,570				
277	3 35	62		314	94	2236	64	704	159	198	468	203	246	265	4951	427	498	418	0	51	138	4303	5229	5,752				
299	4 71	25		319	50	2058	65	712	198	83	337	230	340	147	4539	152	193	146	83	118	12	3794	871	1,987				
294	4 75	21		351	126	2305	11	461	90	75	353	193	226	141	4333	116	270	0	86	125-	167-	3763	613	1,564				
300	3 69	28		265	62	2050	28	437	107	89	253	189	313	107	3901	148	277	0	117	588	312	3510	799	1,932				
297	4 68	28		328	67	2296	69	372	103	93	322	218	259	92	4221	231	300	0	208	525	97	3551	2871	1,629				
306	6 70	24		498	51	1846	89	566	158	77	472	268	302	47	4374	97	699	0	245	616	4	3657	4090	2,310				
308	6 54	40		291	115	1934	246	617	106	223	351	262	305	47	4498	119	374	767	376	814	143	3783	10733	4,748				
309	8 57	35		274	116	1825	125	806	236	143	334	195	263	79	4398	127	289	1	0	62	139	3664	480	3,619				
314	4 72	24		278	102	1899	75	629	109	84	372	213	272	45	4078	80	465	5754	563	302	120	3506	7236	1,159				
911	6 70	24		226	89	2025	209	786	132	146	317	187	180	45	4341	115	227	457	75	245	36-	3717	1681	1,651				
316	5 65	30		295	165	2546	82	846	212	136	497	154	255	62	5248	76	649	25	112	307-	39	4640	4029	1,256				
317	9 70	21		297	95	2165	48	795	219	149	367	196	468	102	4902	96	450	0	282	486	56-	3829	1273	2,904				
318	5 45	50		252	94	2204	104	840	198	124	403	153	305	128	4806	118	416	0	185	208	18	4131	2007	5,163				
319	3 65	32		251	119	1964	121	662	99	56	448	161	648	313	4840	77	460	0	169	1828-	142-	3901	379	1,478				
330	5 47	48		229	83	2469	113	401	139	46	432	208	200	79	4398	147	225	0	153	1094	304	3807	67	3,953				
324	5 59	36		335	56	2323	67	619	126	121	368	225	286	78	4604	148	247	0	275	524	8-	3815	1636	3,288				
325	4 52	44		317	82	2231	151	672	169	41	360	214	243	86	4565	240	429	0	0	349	251	3952	12	3,642				
328	10 28	62		501	209	2269	65	1004	111	14	907	548	341	176	6146	313	619	0	0	2882	1348	4721	0	8,637				
332	5 72	23		274	64	1919	98	634	175	129	317	152	199	30	3992	145	377	111	177	778	164	3447	4246	1,529				
333	5 79	16		267	100	2049	100	512	135	84	382	238	226	43	4136	83	186	2	207	477	61	3510	2763	833				
Data For School Districts				1993-94 Profiles																					Page 32			

Data For School Districts

1993-94 Profiles

Page 32

County Number and Name School District Name	District Number	1993-94 Resident Average Daily Membership					Pupil Data			Professional Staff		Tax Capacity Rates		Pupil Units (Weighted ADM)	
		1. Pre- Kindergarten Handicapped	2. Kindergarten	3. Elementary (Grades 1-6)	4. Secondary (Grades 7-12)	5. Total (Pre-K thru Grade 12)	6. Percent Minority	7. Percent Attendance	8. Percent Transported	9. Total Staff (FTE)	10. Pupil-Staff Ratio	11. Auditor Percent	12. Equalized Percent	13. Resident Pupil Units	14. Total Pupil Units
34 KANDIYOHI															
ATWATER (ICA)	341		38	295	311	644	1.4	95.1	70	42	13.7	51.13	46.38	729	708
NEW LONDON-SPICER	345	9	103	803	782	1,697	2.2	95.1	100	116	14.9	71.58	62.85	1,907	1,947
PRINSBURG (NONOPER)	0815		2	16	9	27	.0	.0	100	0	.0	54.20	52.73	28	29
RAYMOND (ICA)	346	3	19	154	166	342	8.7	94.3	94	22	13.2	56.53	.00	387	367
WILLMAR	347	33	349	2,246	2,043	4,671	14.4	92.9	82	392	12.4	61.99	58.33	5,193	5,434
35 KITTSO															
HALLOCK (ICA)	2359	4	27	203	178	412	1.8	95.6	48	32	10.1	65.45	.00	459	430
KARLSTAD-STRANDQUIST	2358	3	26	194	223	446	.2	94.8	77	37	11.8	67.23	62.93	506	496
KENNEDY (ICA)	354	1	10	77	65	153	4.4	95.7	71	16	12.7	77.22	.00	171	168
LANCASTER	356	1	11	80	87	179	.5	95.1	85	20	10.8	93.42	83.61	202	238
36 KOCHICHING															
INTERNATIONAL FALLS	361	9	121	784	928	1,842	6.1	92.1	91	115	16.0	70.36	60.94	2,087	2,095
LITTLEFORK-BIG FALLS	362	4	24	166	181	375	1.2	92.6	51	26	12.8	51.21	46.03	423	389
SOUTH KOCHICHING	363		16	144	159	319	.5	94.5	100	43	9.6	74.03	64.48	362	473
37 LAC QUI PARLE															
BELLINGHAM (ASE)	371	1	11	86	81	179	1.1	93.3	91	12	8.1	80.81	73.78	201	165
DAWSON	378	5	50	359	337	751	2.7	95.2	57	48	15.3	54.88	50.60	840	828
MADISON (CSF)	2153	3	48	316	316	683	.3	95.9	79	22	18.1	58.73	46.29	765	797
38 LAKE															
LAKE SUPERIOR	381	16	165	1,077	1,100	2,358	.7	94.4	72	139	16.3	60.23	45.05	2,640	2,623
39 LAKE OF THE WOODS															
LAKE OF THE WOODS	390	6	70	406	345	827	2.4	94.0	98	54	15.2	64.27	59.77	910	908
40 LESUEUR															
CLEVELAND	391	2	23	243	253	521	1.4	95.6	64	35	14.0	67.42	56.36	593	563
LECENTER	392	12	53	378	329	772	4.1	94.2	46	51	15.2	65.42	55.15	858	874
LESUEUR-HENDERSON	2397	19	138	590	700	1,447	6.1	93.3	63	91	15.6	76.21	62.95	1,608	1,592
MONTGOMERY	394	6	80	519	559	1,164	4.9	94.5	59	70	15.4	59.96	50.43	1,313	1,238
WATERVILLE-ELYSIAN-MO	2143	15	80	520	581	1,196	1.1	95.2	78	88	12.9	54.57	46.60	1,346	1,293
41 LINCOLN															
HEDRICKS (ICA)	402	1	11	82	79	173	1.6	95.8	83	17	14.8	84.02	80.41	195	215
IVANHOE (ICA)	403	4	29	145	184	362	.7	95.7	85	20	15.4	60.26	57.97	408	418
LAKE BENTON (ASE)	404	1	24	127	137	289	.3	97.1	70	25	12.6	55.60	50.93	322	359
TYLER (ICA)	409	2	26	180	210	418	1.9	95.7	91	18	14.7	75.41	69.76	473	468
42 LYON															
BALATON	411	2	11	105	152	270	.4	95.2	56	21	12.7	60.43	54.99	313	315
COTTONWOOD (ICA)	412	1	25	190	188	404	1.1	95.9	65	34	13.6	50.88	.00	454	491
LYND (ASE)	415	1	18	96	116	231	14.8	94.6	61	12	10.6	61.41	53.61	259	223
MARSHALL (ASE)	413	13	166	967	990	2,136	7.0	95.0	78	142	16.1	48.74	49.23	2,385	2,583
MINNEOTA	414	2	53	197	317	569	1.2	95.3	63	43	13.8	52.01	46.60	645	685
RUSSELL (ICA)	418	1	15	110	99	225	1.0	96.2	87	16	12.2	55.46	52.08	252	247
TRACY (ASE)	417	5	52	359	445	861	8.4	95.2	88	60	14.8	50.33	46.55	981	1,019
Data For School Districts		1993-94 Profiles													

District Number	Revenue %			1993 - 94 Expenditures per Pupil Unit																	Other Measures per Pupil Unit					
	15. Federal	16. State	17. Local and Other	18. District and School Admin.	19. District Support Services	20. Regular Instruction	21. Vocational Instruction	22. Exceptional Instruction	23. Instructional Support Services	24. Pupil Support Services	25. Operations and Maintenance	26. Food Service	27. Pupil Transpor- tation	28. Other Oper. Program	29. Total PK-12 Operating Expendi- tures	30. Community Service	31. Capital Outlay	32. Building Construction	33. Debt Service	34. Operating Funds Balance	35. Change in Funds Balance	36. State and Local Oper. Costs	37. Long Term Debt	38. 1993 Adj. Net Tax Capacity		
341	8 61	31		249	102	2168	49	803	137	95	248	191	230	118	4391	115	242	0	0	338-	192-	3629	75	3,047		
345	3 66	31		243	108	2186	102	544	119	69	280	210	322	18	4202	138	278	4384	724	462	52-	3595	10139	2,629		
0815	1 41	58		15	226	2309	0	2547	70	29	2	0	1210	27	6434	252	199	0	0	24-	2419	5069	0	13,892		
346	2 65	33		386	150	2109	39	910	135	60	418	182	418	69	4874	99	420	0	0	857	275	4239	16	2,873		
347	5 63	32		288	89	2052	170	1050	153	91	286	185	278	116	4759	134	334	2471	376	100	67-	4102	6739	2,331		
2359	3 32	65		693	75	2856	0	523	305	21	413	171	304	114	5474	103	270	0	0	884-	71-	4799	1568	9,653		
2358	5 59	36		429	28	2345	28	606	180	60	493	246	295	72	4783	92	468	0	426	620	355	3969	2961	3,325		
354	3 5	92		719	326	3330	0	436	47	103	828	294	336	217	6636	74	1315	0	0	1864	894	5817	358	10,234		
356	4 53	43		490	72	2973	0	436	88	15	684	328	270	99	5455	97	417	0	162	848	177	4755	568	3,701		
361	6 56	38		280	105	2109	75	723	90	173	481	188	192	171	4586	142	245	0	0	22-	123-	3926	779	2,997		
362	5 76	19		422	200	2385	65	630	140	24	487	185	355	78	4971	97	474	0	0	1083	302-	4256	888	1,391		
363	3 61	36		299	91	3094	39	315	208	151	532	241	449	96	5515	37	187	3658	386	989	260	4750	47636	1,140		
371	9 57	34		314	139	2616	0	962	241	4	403	257	658	108	5702	229	538	0	44	731	462	4296	314	2,845		
378	5 62	33		235	133	2040	69	621	143	106	371	209	186	73	4188	185	394	0	0	555	207	3585	899	2,835		
2153	6 66	28		248	119	1817	114	525	120	159	382	225	279	77	4066	121	342	0	0	132	258	3339	37	2,607		
381	4 58	38		332	76	2107	92	563	163	109	456	145	278	316	4637	144	315	315	48	512-	414	4017	2120	2,675		
390	5 60	35		278	30	2003	0	542	167	70	366	319	356	108	4239	156	647	110	5155	755	151	3507	15136	2,059		
391	3 63	34		309	97	2091	59	436	134	60	253	185	240	30	3894	52	178	0	2737	248	63-	3410	3042	2,715		
392	4 74	22		330	77	2004	179	471	78	54	341	208	188	67	3998	121	184	0	216	216	36-	3502	590	1,747		
2397	4 64	32		298	85	1963	85	531	157	140	319	179	179	130	4068	206	219	0	2753	31-	0	3523	3207	2,410		
394	4 66	30		232	99	2035	96	660	104	140	285	194	265	97	4207	193	163	3853	794	81	92-	3535	5283	2,024		
2143	5 70	25		306	132	2103	110	655	145	115	340	221	185	69	4382	93	422	0	634	390	85-	3836	449	2,257		
402	7 39	54		311	138	2116	252	757	110	157	462	321	292	133	5049	154	112	0	148	230	465	4094	461	4,045		
403	7 62	31		280	92	1619	200	760	85	102	295	229	218	56	3936	67	52	0	0	268	60	3289	0	2,656		
404	5 66	29		340	128	2179	194	496	48	54	374	232	250	77	4370	88	188	0	0	130	355-	3767	102	2,704		
409	2 65	33		272	71	1909	287	209	89	52	244	154	405	100	3793	181	672	138	0	722	142	3070	0	2,035		
411	4 56	40		331	116	2187	0	548	179	88	371	239	234	112	4405	139	424	0	0	259	166	3804	36	3,411		
412	6 62	32		342	158	2138	69	504	147	74	266	215	149	51	4111	64	122	0	0	851	219	3550	62	3,157		
415	4 67	29		258	130	2217	0	491	92	12	266	140	228	56	3890	108	133	0	0	459	108	3424	0	2,258		
413	4 60	36		297	70	1888	53	683	140	110	447	215	284	72	4260	133	332	0	2187	567	143	3567	2498	3,192		
414	5 67	28		373	169	1938	42	491	91	65	307	158	152	221	4007	104	290	0	19	318	195-	3545	310	2,519		
418	7 49	44		306	130	2420	0	358	131	19	246	239	204	81	4133	91	526	0	0	515	236	3688	0	3,408		
417	5 56	39		249	75	2107	144	691	155	92	369	235	215	47	4379	94	258	0	0	548	115-	3769	112	3,295		
Data For School Districts																										
1993-94 Profiles															Page 34											

County Number and Name School District Name	District Number	1993-94 Resident Average Daily Membership					Pupil Data			Professional Staff		Tax Capacity Rates		Pupil Units (Weighted ADM)	
		1. Pre- Kindergarten Handicapped	2. Kindergarten	3. Elementary (Grades 1-6)	4. Secondary (Grades 7-12)	5. Total (Pre-K thru Grade 12)	6. Percent Minority	7. Percent Attendance	8. Percent Transported	9. Total Staff (FTE)	10. Pupil-Staff Ratio	11. Auditor Percent	12. Equalized Percent	13. Resident Pupil Units	14. Total Pupil Units
43 MCLEOD															
BROWNTON (ICA)	421	1	16	181	156	354	1.7	93.7	59	22	13.8	57.24	48.25	399	368
GLENCOE	422	10	82	658	709	1,459	7.5	93.9	85	82	17.9	55.25	46.57	1,653	1,678
HUTCHINSON	423	34	229	1,380	1,409	3,052	2.3	92.8	94	183	17.1	61.55	51.88	3,411	3,546
LESTER PRAIRIE (ASE)	424	2	42	227	215	486	.0	95.4	64	40	14.5	64.78	54.61	536	641
SILVER LAKE	425	4	34	118	214	370	.6	95.3	93	25	13.6	59.99	51.17	421	394
STEWART (ICA)	426	1	19	137	144	301	5.2	95.4	60	21	14.0	67.45	58.82	338	307
WINSTED (ASE)	427	2	12	94	114	222	.0	95.0	42	12	11.5	49.49	40.87	252	204
44 MAHNOMEN															
MAHNOMEN	432	5	57	350	460	872	51.0	92.4	81	73	12.1	43.86	36.80	993	1,020
WAUBUN	435	1	52	303	296	652	52.8	92.2	83	59	10.7	56.94	50.90	726	707
45 MARSHALL															
ARGYLE	437	1	25	115	122	263	.8	96.8	48	24	11.3	55.42	50.48	290	297
GRYGLA	447	1	13	101	129	244	.4	95.5	88	22	10.9	58.60	53.61	279	275
MIDDLE RIVER (ICA)	440	1	14	78	105	198	1.2	95.8	80	20	12.3	96.78	88.94	225	215
NEWFOLDEN	441	27	177	197	401	705	.2	94.5	93	34	11.9	50.96	49.48	454	465
OSLO	442	10	69	80	159	218	16.9	94.4	58	24	10.2	88.34	.00	180	283
STEPHEN	443	17	147	135	299	500	5.0	96.0	49	24	12.2	57.73	54.38	336	331
WARREN-ALVARADO	2163	7	51	337	356	751	5.8	94.5	39	56	12.4	67.10	.00	842	777
46 MARTIN															
CEYLON (ASE)	451	1	13	67	82	163	1.6	94.5	39	7	9.0	57.99	57.99	184	120
FAIRMONT (ASE)	454	20	122	950	1,026	2,118	4.0	93.9	86	117	18.9	61.12	58.01	2,400	2,535
GRANADA HUNTLEY-EAST	2536	3	30	221	233	487	3.2	95.2	79	40	11.6	54.19	54.41	549	522
MARTIN CO WEST (ASE)	2448	2	74	442	461	979	1.8	95.3	73	73	14.1	54.16	53.94	1,095	1,156
TRUMAN (ASE)	458	3	35	209	250	497	1.2	95.2	67	37	13.5	62.90	62.65	561	569
47 MEEKER															
COSMOS (ICA)	461	1	31	133	134	299	2.6	95.2	80	29	11.5	54.62	50.58	328	296
DASSEL-COKATO	466	13	129	958	855	1,955	2.2	94.7	97	128	15.8	64.89	58.21	2,180	2,255
EDEN VALLEY	463	9	77	348	461	895	.9	95.3	96	59	15.1	64.46	58.59	1,012	1,013
GROVE CITY (ICA)	464	4	28	191	163	386	2.9	94.3	72	24	12.9	69.47	64.19	428	371
LITCHFIELD	465	15	162	972	1,025	2,174	4.4	94.2	93	140	15.2	61.19	57.03	2,433	2,394
48 MILLE LACS															
ISLE	473	3	36	227	230	496	6.7	94.4	100	37	14.1	73.30	63.18	554	590
MILACA	912	17	93	775	791	1,676	4.0	93.0	75	106	15.4	64.09	55.95	1,893	1,843
ONAMIA	480	11	62	369	331	773	15.2	93.0	96	66	12.8	78.07	69.87	858	955
PRINCETON	477	25	210	1,365	1,367	2,967	2.9	93.6	93	180	16.2	60.48	52.08	3,328	3,271
49 MORRISON															
LITTLE FALLS	482	24	236	1,601	1,675	3,536	1.7	94.9	88	207	17.5	60.54	57.76	3,972	4,074
MOTLEY	483	2	25	248	251	526	.0	92.0	37	21	11.2	63.88	.00	595	277
PIERZ	484	10	60	333	582	985	1.0	94.7	87	72	13.4	61.76	59.16	1,142	1,140
ROYALTON	485	6	67	381	379	833	1.1	94.3	87	58	14.2	53.69	50.96	926	928
SWANVILLE	486	3	18	178	216	415	1.4	99.3	86	30	14.1	63.44	57.22	476	491
UPSALA	487	3	26	205	201	435	.2	95.5	94	36	12.2	55.34	52.57	489	492
50 MOWER															
AUSTIN	492	42	305	1,816	1,878	4,041	5.1	92.8	63	267	15.4	68.28	64.45	4,512	4,605
GRAND MEADOW	495	1	39	201	181	422	2.4	95.1	53	31	13.1	66.46	58.55	463	453
LEROY	499	1	36	218	208	463	.2	96.4	58	31	14.4	80.50	69.71	515	504
LYLE	497	2	17	128	143	290	.0	94.0	56	27	10.3	63.38	55.84	328	321
SOUTHLAND	500	6	39	273	301	619	2.4	95.2	96	53	12.2	60.98	54.45	699	736

Data For School Districts

1993-94 Profiles

Page 35



District Number	Revenue %			1993 - 94 Expenditures per Pupil Unit																			Other Measures per Pupil Unit					
	15. Federal	16. State	17. Local and Other	18. District and School Admin.	19. District Support Services	20. Regular Instruction	21. Vocational Instruction	22. Exceptional Instruction	23. Instructional Support Services	24. Pupil Support Services	25. Operations and Maintenance	26. Food Service	27. Pupil Transpor- tation	28. Other Oper. Program	29. Total PK-12 Operating Expendi- tures	30. Community Service	31. Capital Outlay	32. Building Construction	33. Debt Service	34. Operating Funds Balance	35. Change in Funds Balance	36. State and Local Oper. Costs	37. Long Term Debt	38. 1993 Adj. Net Tax Capacity				
421	4 68	28		418	78 1811	89	435	80	155	358	155	293	58	3930	107	292	0	0		211	59	3295	149	2,169				
422	2 70	28		333	95 1955	4	484	108	141	339	225	217	138	4040	193	199	0	125	4-	153	3505	111	2,213					
423	2 67	31		261	91 1857	68	466	165	96	389	189	306	117	4005	80	275	91	389	79	71-	3401	4426	2,420					
424	3 76	21		293	158 2139	30	383	152	48	257	179	250	46	3935	86	143	24	252	135	252-	3365	3028	1,670					
425	3 71	26		359	132 2191	130	440	68	37	301	226	395	103	4380	156	190	0	672	117	60-	3626	4433	1,827					
426	6 58	36		336	96 1907	97	710	97	158	328	206	316	125	4375	143	313	0	0	362-	11-	3560	0	2,695					
427	5 24	71		422	152 2475	0	1148	22	25	271	20	332	66	4932	284	177	0	0	1092-	1201-	4407	0	4,418					
432	17 68	15		361	122 2425	181	1036	224	70	454	277	383	369	5902	91	562	0	288	160-	81-	4477	3103	1,639					
435	16 64	20		452	106 2452	153	934	265	91	310	280	422	67	5532	70	171	0	0	170	144-	4081	24	2,097					
437	12 45	43		499	150 2216	41	843	198	133	409	230	340	72	5130	284	265	0	0	192	222-	3978	32	4,257					
447	7 71	22		293	107 2399	494	559	189	7	359	283	556	33	5279	48	544	127	203	810	132	4139	4401	1,632					
440	7 67	26		571	61 2287	0	632	143	26	317	418	581	311	5346	114	736	0	111	602	80	4067	257	1,313					
441	4 54	42		399	91 2218	83	591	101	26	316	236	319	110	4489	102	323	309	0	239	597	3701	22	4,782					
442	4 56	40		715	62 2210	98	743	73	49	381	213	205	79	4827	160	65	125	12	1291-	914-	4288	986	2,672					
443	5 40	55		642	129 2234	0	442	205	150	612	236	237	41	4929	78	410	0	0	674	38	4246	89	4,985					
2163	7 51	42		408	27 2351	10	679	125	73	510	234	179	102	4696	95	603	0	115	1245	318	4161	603	3,742					
451	4 40	56		454	277 3200	0	443	29	1	481	248	489	108	5730	319	167	0	0	466	311-	4906	240	4,776					
454	3 53	44		200	78 1928	107	512	174	88	405	235	285	109	4120	263	920	167	0	40	49	3770	764	2,611					
2536	5 42	53		371	164 2664	0	522	110	31	431	255	252	48	4847	146	278	0	0	675	533-	4217	85	4,850					
2448	4 42	54		381	122 2124	157	486	105	71	412	224	225	86	4393	142	557	0	0	843	61	3828	99	5,536					
458	4 53	43		296	92 2081	88	623	65	58	375	197	455	71	4401	112	194	0	0	754	241	3585	28	3,783					
461	4 64	32		399	134 2091	48	619	141	73	286	313	315	314	4732	100	344	0	0	301	412-	4135	316	3,088					
466	4 72	24		244	52 1945	88	565	179	101	314	182	260	89	4022	138	183	55	296	587	113	3487	5652	1,689					
463	5 73	22		305	122 1952	92	643	115	57	357	226	370	111	4349	115	282	97	426	472	51-	3634	4836	1,591					
464	2 72	26		357	342 2205	49	644	132	79	388	184	464	258	5101	133	69	0	0	370-	126-	4356	291	1,712					
465	3 68	29		290	118 2131	37	549	130	78	265	155	324	153	4230	148	284	1087	128	568	0	3619	3387	2,054					
473	5 57	38		400	348 2178	33	555	110	30	463	289	217	59	4681	98	195	0	441	641	12	4046	3568	3,487					
912	4 75	21		253	121 1918	96	757	109	83	334	158	339	123	4291	135	273	91	392	54	111	3599	4604	1,374					
480	11 53	36		317	115 2487	34	900	120	118	384	228	313	77	5093	97	328	168	706	591	10-	4003	7503	3,054					
477	4 74	22		271	98 1832	129	507	208	135	292	227	361	133	4194	148	388	1988	293	130	11-	3430	3541	1,611					
482	5 75	20		286	75 1790	228	721	143	77	377	210	389	101	4396	135	409	181	183	331	27	3605	2216	1,470					
483	9 40	51		365	187 2305	2	1105	226	22	512	248	609	420	6002	124	333	0	326	1498-	349-	4675	565	2,902					
484	8 72	20		304	83 1830	185	827	141	148	254	193	374	39	4378	134	208	0	386	726	165	3471	4769	1,322					
485	7 73	20		346	107 2030	119	539	119	61	289	220	173	28	4031	90	284	0	208	544	31-	3442	939	1,561					
486	6 75	19		345	76 2404	101	501	78	38	310	216	315	141	4526	80	220	0	391	129-	56	3784	2378	1,356					
487	6 77	17		404	136 2050	262	655	162	30	301	206	285	62	4555	128	290	0	0	189-	22-	3818	322	1,009					
492	4 64	32		286	141 1864	102	942	167	76	452	177	204	376	4789	154	288	825	328	73	112	4335	3801	2,341					
495	3 61	36		295	202 2047	159	513	73	109	361	225	188	131	4303	125	416	0	48	590	220	3771	38	2,640					
499	4 61	35		194	184 2061	231	448	44	207	264	205	195	129	4161	371	337	0	182	277	306	3575	807	2,587					
497	11 66	23		358	111 1967	0	506	339	94	351	241	174	325	4466	69	273	0	0	626	198	3586	37	2,036					
500	4 59	37		391	99 2132	185	589	166	188	395	215	473	175	5009	297	248	0	193	152-	138-	4104	2238	3,782					
Data For School Districts				1993-94 Profiles																				Page 36				

Data For School Districts

1993-94 Profiles

County Number and Name School District Name	District Number	1993-94 Resident Average Daily Membership					Pupil Data			Professional Staff		Tax Capacity Rates		Pupil Units (Weighted ADM)	
		1. Pre- Kindergarten Handicapped	2. Kindergarten	3. Elementary (Grades 1-6)	4. Secondary (Grades 7-12)	5. Total (Pre-K thru Grade 12)	6. Percent Minority	7. Percent Attendance	8. Percent Transported	9. Total Staff (FTE)	10. Pupil-Staff Ratio	11. Auditor Percent	12. Equalized Percent	13. Resident Pupil Units	14. Total Pupil Units
51 MURRAY															
CHANDLER-LW (ICA)	918	1	10	125	118	254	.0	96.3	83	18	7.4	48.17	.00	288	273
FULDA (ICA)	505	5	30	259	287	581	1.8	96.5	67	47	12.9	60.57	54.09	660	698
SLAYTON (ICA)	504	6	45	351	359	761	.5	96.5	77	54	16.1	52.31	.00	858	866
52 NICOLLET															
NICOLLET	507	3	20	159	214	396	.0	95.3	72	31	13.6	76.50	66.86	454	478
ST. PETER	508	20	117	887	922	1,946	3.2	93.0	74	123	16.2	66.32	56.44	2,193	2,263
53 NOBLES															
ADRIAN	511	5	40	253	252	550	.9	95.4	65	42	13.4	58.44	53.77	616	636
BREWSTER (ICA)	513	2	26	121	109	258	7.6	96.7	80	12	12.8	53.90	49.86	283	279
ELLSWORTH	514	2	20	121	114	257	.0	95.3	50	18	11.7	67.22	61.50	285	242
ROUND LAKE (ICA)	516	1	16	85	75	177	2.9	96.2	90	18	11.7	70.54	64.47	194	202
WORTHINGTON	518	17	176	1,132	1,201	2,526	16.9	93.7	74	173	14.6	55.74	47.88	2,837	2,859
54 NORMAN															
ADA (ASE)	521	2	35	213	258	508	5.8	99.7	60	43	13.6	57.63	51.86	574	668
BORUP (ASE)	522	1	7	40	68	116	13.4	94.6	100	10	6.7	55.68	49.61	134	140
GARY (ICA)	523		17	73	82	172	7.4	95.5	65	13	13.2	77.53	68.84	191	139
HALSTAD-HENDRUM	2527		27	185	186	398	14.4	93.3	100	36	13.2	59.54	52.57	447	531
TWIN VALLEY (ICA)	526	1	28	168	177	374	11.7	94.1	82	30	10.6	70.00	62.51	420	413
55 OLMSTED															
BYRON	531	7	96	667	571	1,341	1.3	95.5	69	93	14.1	70.47	60.04	1,490	1,463
CHATFIELD	227	5	55	448	395	903	.6	96.2	65	61	15.2	62.28	52.44	1,009	1,048
DOVER-EYOTA	533	4	58	395	408	865	.9	94.8	80	62	14.7	59.17	49.29	972	1,014
ROCHESTER	535	60	1,226	7,542	6,135	14,963	10.8	95.3	67	911	16.3	66.50	60.38	16,452	16,443
STEWARTVILLE	534	2	137	872	714	1,725	1.9	95.4	84	107	16.2	70.23	60.82	1,900	1,907
56 OTTER TAIL															
BATTLE LAKE	542	2	41	268	233	544	2.6	96.2	86	37	13.9	52.59	43.97	603	572
FERGUS FALLS	544	19	207	1,553	1,564	3,343	2.2	92.9	74	212	15.9	55.74	49.67	3,762	3,823
HENNING	545		28	231	234	493	1.7	94.6	82	37	12.7	78.12	65.70	558	530
NEW YORK MILLS	553	4	42	323	355	724	.3	95.3	90	47	15.2	85.40	77.03	819	811
PARKERS PRAIRIE	547	5	41	291	264	601	1.4	95.0	84	44	14.4	53.73	48.41	670	714
PELICAN RAPIDS	548	3	94	602	584	1,283	6.2	94.9	75	86	14.5	55.60	47.71	1,430	1,403
PERHAM	549	6	120	707	785	1,618	2.9	95.0	91	110	14.8	67.60	58.14	1,819	1,847
UNDERWOOD	550	2	25	189	206	422	.9	94.7	100	32	13.9	54.60	46.24	477	508
57 PENNINGTON															
GOODRIDGE	561		12	94	125	231	3.0	95.5	94	21	10.9	71.89	61.97	265	269
THIEF RIVER FALLS	564	3	191	1,039	1,110	2,343	4.2	90.8	64	157	14.9	76.31	68.45	2,616	2,639
58 PINE															
EAST CENTRAL	2580	3	62	471	509	1,045	8.1	93.1	87	98	11.5	69.49	63.72	1,181	1,298
FINLAYSON (ASE)	570		11	100	127	238	.0	96.0	85	10	12.2	62.50	.00	273	253
HINCKLEY (ASE)	573	3	61	437	436	937	6.7	94.6	86	60	17.7	48.38	.00	1,051	1,079
PINE CITY	578	9	132	799	784	1,724	1.7	93.3	88	110	15.8	57.34	52.64	1,921	1,959
WILLOW RIVER	577	1	45	264	258	568	3.2	94.6	87	37	14.5	66.38	59.61	632	597
59 PIPESTONE															
EDGERTON	581	2	18	108	152	280	2.4	96.2	67	24	12.1	49.18	42.93	319	333
JASPER (ICA)	582	2	14	127	98	241	3.2	95.2	56	10	11.1	64.10	57.69	269	224
PIPERTONE (ICA)	583	5	112	682	586	1,385	5.2	94.6	57	89	16.2	55.23	48.88	1,528	1,535
RUTHTON (ICA)	584	1	21	86	88	196	3.0	96.4	79	24	15.0	68.06	60.37	214	210
Data For School Districts															

District Number	Revenue %			1993 - 94 Expenditures per Pupil Unit																	Other Measures per Pupil Unit				
	15. Federal	16. State	17. Local and Other	18. District and School Admin.	19. District Support Services	20. Regular Instruction	21. Vocational Instruction	22. Exceptional Instruction	23. Instructional Support Services	24. Pupil Support Services	25. Operations and Maintenance	26. Food Service	27. Pupil Transpor- tation	28. Other Oper. Program	29. Total PK-12 Operating Expendi- tures	30. Community Service	31. Capital Outlay	32. Building Construction	33. Debt Service	34. Operating Funds Balance	35. Change in Funds Balance	36. State and Local Oper. Costs	37. Long Term Debt	38. 1993 Adj. Net Tax Capacity	
918	9 60	31		539	149	2079	55	823	132	80	477	60	938	191	5523	112	549	0	0	779	253-	4260	0	4,007	
505	6 58	36		351	121	2002	253	565	156	84	414	182	320	108	4555	282	611	0	0	167	29	3794	626	3,349	
504	6 65	29		300	142	2046	64	748	125	104	368	267	363	124	4651	105	387	0	0	745	30-	3817	197	2,684	
507	3 59	38		354	193	2060	86	319	247	193	416	254	462	111	4695	139	137	0	947	734	247	3878	7547	3,546	
508	3 68	29		305	77	1872	30	851	136	122	338	160	257	60	4208	93	628	0	1466	55-	109	3638	3129	2,112	
511	9 60	31		330	68	2232	39	499	151	73	323	213	356	122	4406	95	434	0	2046	150	259-	3593	974	2,805	
513	5 61	34		372	109	2098	130	436	158	10	350	170	285	50	4169	234	350	0	0	1074	34-	3585	0	3,211	
514	5 53	42		346	139	2540	0	589	78	6	350	220	284	129	4682	64	179	0	0	79	76	3908	114	2,924	
516	2 46	52		460	138	1874	92	417	226	15	454	278	296	180	4431	167	219	0	0	412	24	3803	18	4,247	
518	5 63	32		267	117	1747	118	1295	381	159	339	227	253	124	5028	163	187	0	175	109	69	4353	0	2,917	
521	4 54	42		169	31	2079	720	555	86	16	240	221	353	62	4534	72	331	0	202	621	11	3578	428	3,579	
522	4 49	47		72	215	2577	263	460	40	7	235	192	518	86	4664	320	601	0	0	838	224	3836	0	6,355	
523	9 52	39		582	100	3854	101	1113	122	18	1030	408	796	312	8435	177	597	0	453	1549-	1648-	6777	827	2,740	
2527	9 47	44		415	41	2169	336	896	76	89	468	272	363	56	5182	72	369	0	173	861	328	4107	1691	3,977	
526	5 71	24		357	33	2077	331	539	141	23	235	239	388	87	4451	119	215	0	35	273-	239-	3583	83	1,611	
531	2 73	25		287	79	2175	35	684	106	110	350	205	242	52	4324	182	518	0	462	59	281-	3820	5245	1,897	
227	3 72	25		352	110	1961	101	444	109	86	313	183	256	75	3990	100	238	0	0	454	20-	3447	89	2,009	
533	4 74	22		299	94	1904	67	465	251	109	302	214	173	42	3920	92	237	0	4697	471	46	3420	11645	1,635	
535	3 49	48		202	117	1953	109	767	331	119	371	164	300	147	4581	221	236	85	205	494	156	4254	2038	4,063	
534	2 74	24		272	81	2002	85	576	193	105	326	193	263	112	4208	163	386	0	189	249	34	3694	462	1,616	
542	7 36	57		281	116	2291	210	598	90	40	326	184	318	63	4516	138	428	0	0	275-	335-	3711	63	6,456	
544	3 68	29		271	55	1963	85	723	170	146	304	141	284	76	4217	134	222	703	0	594	55	3637	1917	2,463	
545	6 69	25		284	119	2133	210	693	160	59	272	175	295	40	4441	91	143	549	0	310	42-	3805	8410	2,440	
553	5 71	24		314	154	2048	320	558	93	38	342	254	203	59	4383	104	838	194	507	422	62	3667	8925	1,110	
547	7 74	19		305	142	2160	124	661	136	77	282	214	405	58	4564	92	605	0	288	253	62-	3619	1263	1,592	
548	5 64	31		247	41	2029	80	461	105	60	255	160	330	61	3829	58	263	14	419	698	171	3185	1262	3,169	
549	5 64	31		240	125	1926	135	665	165	128	320	202	365	55	4326	131	244	192	353	503	55	3602	6687	2,926	
550	5 74	21		291	116	2113	128	468	175	58	280	212	179	60	4081	123	364	0	159	745	44	3560	246	1,661	
561	8 70	22		514	153	2333	355	897	163	10	334	351	491	83	5684	53	800	0	0	555	21	4552	126	1,659	
564	5 69	26		319	108	1927	132	767	223	85	355	186	196	128	4426	133	351	4103	526	293	25	3839	9729	1,779	
2580	6 61	33		380	91	1720	125	1525	163	110	351	221	274	143	5104	108	363	0	1190	457-	168-	4336	3881	1,733	
570	4 61	35		143	91	2679	0	421	207	153	295	173	306	54	4521	143	360	0	3832	1068	273	3925	3938	2,718	
573	5 66	29		361	119	2191	34	485	99	122	323	220	175	94	4223	95	436	0	323	1706	589	3589	1854	2,120	
578	4 69	27		269	121	1937	65	532	189	218	273	193	349	41	4186	100	206	0	294	653	29	3469	1129	2,090	
577	4 69	27		198	91	2070	37	629	176	189	333	210	341	25	4297	69	29	1872	668	317	108-	3637	6273	1,914	
581	6 55	39		280	67	2504	55	793	98	53	350	191	739	43	5173	131	358	0	0	2115	233	3561	0	3,911	
582	3 38	59		516	42	3608	44	454	373	23	350	163	382	105	6061	134	711	0	0	2217	413	5427	32	3,653	
583	6 66	28		223	41	2262	100	739	167	96	327	191	317	84	4547	212	340	0	34	570	64	3802	76	2,287	
584	19 39	42		485	154	2780	0	1995	146	36	482	414	572	147	7212	80	1575	0	0	1613	437	5106	0	2,843	
Data For School Districts															1993-94 Profiles					Page 38					

Data For School Districts

1993-94 Profiles

Page 38

County Number and Name School District Name	District Number	1993-94 Resident Average Daily Membership					Pupil Data			Professional Staff		Tax Capacity Rates		Pupil Units (Weighted ADM)	
		1. Pre- Kindergarten Handicapped	2. Kindergarten	3. Elementary (Grades 1-6)	4. Secondary (Grades 7-12)	5. Total (Pre-K thru Grade 12)	6. Percent Minority	7. Percent Attendance	8. Percent Transported	9. Total Staff (FTE)	10. Pupil-Staff Ratio	11. Auditor Percent	12. Equalized Percent	13. Resident Pupil Units	14. Total Pupil Units
60 POLK	592		17	66	99	182	3.0	94.7	76	19	10.2	78.59	68.29	206	228
CLIMAX	593	3	107	859	944	1,913	11.3	94.0	64	143	13.5	47.58	44.44	2,171	2,205
CROOKSTON (ASE)	595	9	178	1,025	901	2,113	2.8	93.3	59	153	14.0	49.94	47.84	2,329	2,376
EAST GRAND FORKS	599	1	37	235	256	529	1.3	95.7	88	48	13.4	58.18	51.96	595	730
FERTILE (ASE)	600	1	20	102	102	225	13.3	94.7	69	20	11.1	74.10	63.66	247	244
FISHER	601	3	44	329	359	735	5.0	94.0	73	46	16.2	63.70	59.05	830	839
FOSSTON	604		14	85	71	170	.0	95.2	100	7	11.5	53.88	47.36	186	186
MENTOR (ASE)	2609	1	28	234	253	516	1.0	94.9	84	39	13.0	67.41	60.40	585	573
WIN-E-MAC (ASE)	611	1	13	61	71	146	4.3	95.7	100	10	11.6	64.36	57.86	163	186
61 POPE	2149	6	127	938	862	1,933	1.5	95.3	82	126	14.8	68.72	62.88	2,164	2,101
CYRUS (ASE)	621	60	852	5,676	5,209	11,797	8.1	93.5	89	713	16.8	65.44	64.46	13,124	13,420
MINNEWASKA	622	63	816	5,018	4,354	10,251	7.0	92.7	81	559	18.5	60.31	58.18	11,325	11,554
62 RAMSEY	623	11	510	3,170	2,875	6,566	12.2	94.8	95	431	15.3	73.66	76.56	7,277	7,366
MOUNDS VIEW	625	277	3,757	20,275	15,077	39,386	49.4	90.6	73	2,681	14.5	62.54	62.48	42,723	42,199
N. ST. PAUL MAPLEWOOD	624	49	701	4,719	4,093	9,562	3.7	94.3	80	631	15.0	71.91	65.97	10,591	10,601
ROSEVILLE	627		19	123	159	301	2.6	94.9	75	22	14.1	59.37	57.71	343	351
ST. PAUL	628		8	99	106	213	.0	96.0	88	20	11.1	67.06	65.79	244	251
WHITE BEAR LAKE	630	1	37	162	299	499	8.1	94.3	91	40	12.6	60.67	58.18	575	586
63 RED LAKE	631	1	12	88	73	174	.0	96.3	63	12	10.2	84.77	78.16	193	175
OKLEE	633	1	20	135	142	298	1.1	94.8	83	24	11.0	53.69	48.00	335	334
PLUMMER	635	2	13	101	91	207	.0	96.5	84	14	11.3	60.08	55.09	231	232
RED LAKE FALLS (ASE)	636	3	30	85	192	310	2.2	95.6	61	24	11.8	68.72	63.77	357	353
64 REDWOOD	637	8	87	588	552	1,235	4.5	93.9	97	86	16.2	69.97	65.35	1,376	1,578
BELVIEW (ICA)	638	1	9	110	104	224	.7	96.5	68	22	11.6	74.81	67.63	254	234
LAMBERTON (ICA)	640	2	22	185	253	462	.0	94.8	78	40	11.6	54.20	50.30	532	532
MILROY (ASE)	641	1	17	105	129	252	2.1	96.6	65	21	11.0	57.35	52.30	286	255
MORGAN (ICA)	2534	19	83	456	512	1,070	8.2	94.8	100	79	13.8	53.04	50.18	1,202	1,234
REDWOOD FALLS (ASE)	2159	5	44	312	303	664	4.1	95.2	83	48	14.1	56.19	53.44	743	755
SANBORN (ICA)	648		19	147	132	298	6.6	95.4	78	20	16.6	50.15	47.80	332	310
WABASSO	650	2	13	66	56	137	3.6	96.6	65	12	13.4	62.12	58.64	149	157
WALNUT GROVE (ICA)	652	1	14	131	120	266	48.1	98.4	72	11	11.2	54.68	52.66	298	282
65 RENVILLE	654	2	36	204	203	445	11.0	94.3	80	23	12.9	56.45	53.52	495	496
BIRD ISLAND-OLIVIA-LA	655	3	16	137	94	250	12.1	95.3	73	22	16.6	56.53	55.28	274	267
BUFFALO LAKE-HECTOR	656	20	304	2,010	1,962	4,296	5.5	94.2	74	306	13.9	71.59	62.57	4,804	4,819
DANUBE (ICA)	659	13	245	1,519	1,621	3,398	3.5	94.8	87	227	15.1	63.29	54.37	3,814	3,890
66 RICE	671	1	28	187	209	425	1.7	96.0	82	27	15.0	69.29	66.80	480	472
FARIBAULT	670	12	70	610	549	1,241	2.7	95.6	54	97	14.3	52.37	.00	1,393	1,585
NORTHFIELD	669	3	16	85	87	191	7.7	94.0	69	12	7.6	58.53	.00	211	194
67 ROCK															
HILLS-BEAVER CREEK															
LUVERNE (ICA)															
MAGNOLIA (ICA)															



District Number	Revenue %			1993 - 94 Expenditures per Pupil Unit																			Other Measures per Pupil Unit				
	15. Federal	16. State	17. Local and Other	18. District and School Admin.	19. District Support Services	20. Regular Instruction	21. Vocational Instruction	22. Exceptional Instruction	23. Instructional Support Services	24. Pupil Support Services	25. Operations and Maintenance	26. Food Service	27. Pupil Transpor- tation	28. Other Oper. Program	29. Total PK-12 Operating Expendi- tures	30. Community Service	31. Capital Outlay	32. Building Construction	33. Debt Service	34. Operating Funds Balance	35. Change in Funds Balance	36. State and Local Oper. Costs	37. Long Term Debt	38. 1993 Adj. Net Tax Capacity			
592	5 38	57		657	246	2651	77	646	75	131	418	284	380	82	5648	37	537	0	0	680	262-	4761	0	4,996			
593	6 67	27		250	129	2043	165	750	189	92	355	254	131	129	4488	100	369	0	375	389	79-	3914	556	2,320			
595	4 74	22		275	129	2111	164	516	190	132	365	222	174	73	4352	112	244	0	28	411	64-	3836	364	2,167			
599	4 65	31		350	36	1826	302	639	127	79	306	236	343	97	4340	62	288	0	485	376	25-	3632	6546	2,214			
600	3 38	59		524	168	2408	0	492	256	88	362	249	269	77	4894	131	367	0	0	124	421	4273	238	6,125			
601	5 70	25		339	100	1808	291	623	125	74	321	200	292	204	4376	121	239	0	375	219	437	3598	1511	1,552			
604	6 50	44		159	88	2541	0	455	13	12	230	139	559	296	4491	36	79	0	0	17	320-	3637	0	5,059			
2609	5 62	33		334	115	2361	97	622	130	13	414	203	260	44	4593	115	387	0	0	603	296	3913	22	2,228			
611	5 66	29		103	142	2761	0	593	83	5	305	158	281	82	4512	464	502	0	0	323	25-	3952	0	2,637			
2149	5 61	34		222	103	2040	109	514	108	84	325	253	303	96	4157	113	396	0	844	703	385	3436	10886	2,043			
621	3 44	53		158	140	2399	116	687	164	174	426	185	258	157	4864	178	331	699	240	81	48	4275	2504	4,563			
622	3 48	49		260	123	2284	57	726	181	149	276	224	218	173	4672	271	295	0	53	314	142	4120	1605	4,298			
623	3 35	62		324	166	2381	90	831	493	215	469	184	237	179	5571	344	223	999	170	944	247	5021	5019	5,690			
625	8 53	39		224	195	2108	73	1487	235	164	531	223	272	279	5791	251	433	435	101	317	17	4870	4521	4,049			
624	2 51	47		330	84	2266	105	686	215	110	358	211	182	372	4918	249	542	645	124	379-	306-	4430	4502	3,313			
627	5 65	30		337	152	2046	98	418	152	3	470	245	250	137	4308	106	400	0	139	396	412	3632	569	2,734			
628	8 62	30		616	176	2299	0	682	34	3	388	271	300	32	4800	92	359	0	0	306	186-	3945	0	2,309			
630	7 67	26		603	69	2018	58	494	122	130	445	212	217	109	4476	134	291	0	0	931-	253	3573	291	1,314			
631	6 50	44		514	107	2806	0	789	128	15	400	213	424	105	5502	9	661	0	0	286-	339-	4702	26	3,410			
633	2 55	43		306	91	2535	182	396	106	52	436	255	232	72	4661	239	362	0	0	435	323-	4120	110	3,809			
635	4 56	40		303	130	2513	0	395	178	18	318	175	276	110	4415	81	211	0	0	294	47	3836	0	3,653			
636	5 43	52		278	174	2027	100	705	221	81	408	201	390	49	4634	95	338	0	273	136	10-	3786	1625	4,662			
637	3 58	39		277	88	1947	16	565	142	105	268	220	242	39	3910	127	293	0	3369	385	387	3351	10763	2,582			
638	13 46	41		381	53	2419	39	950	185	53	383	340	240	100	5142	115	627	0	0	248	474	4077	304	3,476			
640	7 49	44		283	104	2170	99	862	256	159	268	224	235	78	4740	156	296	0	0	268-	58	3975	35	4,373			
641	11 39	50		447	180	2209	62	533	152	71	481	286	224	60	4705	89	401	0	0	640	384	3818	111	4,712			
2534	4 60	36		263	118	2086	56	594	100	65	331	173	306	57	4149	162	375	0	0	785	243	3498	99	3,402			
2159	5 48	47		283	88	2137	43	517	115	104	355	183	244	82	4152	67	308	0	68	768	450	3552	336	4,126			
648	8 51	41		322	77	1764	0	759	134	55	337	238	359	99	4143	91	327	0	0	245	30	3262	35	3,837			
650	4 47	49		479	179	1987	73	765	147	89	529	346	222	77	4894	151	391	0	61	418-	334-	4255	171	5,244			
652	18 59	23		284	145	3020	0	543	75	261	221	161	205	17	4930	309	160	0	0	29	63	3768	0	2,283			
654	3 50	47		341	82	1852	77	473	132	42	357	119	213	104	3792	144	415	0	0	528	113	3237	14	4,133			
655	7 54	39		341	82	1852	0	563	149	40	357	355	232	104	4075	90	583	0	0	465	108	2614	115	3,472			
656	5 65	30		214	116	2233	78	1251	243	75	364	226	320	41	5162	163	591	0	262	166	11	4412	1833	2,421			
659	2 63	35		275	145	2035	39	644	234	133	336	185	333	84	4442	200	308	0	186	639	77	3834	1367	2,927			
671	5 55	40		266	120	2080	142	489	127	36	355	238	222	90	4167	91	338	0	0	400	541	3533	236	2,898			
670	5 66	29		217	90	1976	97	525	135	193	325	164	184	43	3949	194	384	0	0	695	113	3427	42	2,307			
669	7 56	37		288	146	2698	0	601	18	8	269	159	308	72	4568	199	229	0	0	863-	360-	3883	0	3,569			
Data For School Districts																											
1993-94 Profiles																											
Page 40																											

Data For School Districts

1993-94 Profiles

Page 40

County Number and Name School District Name	District Number	1993-94 Resident Average Daily Membership					Pupil Data			Professional Staff		Tax Capacity Rates		Pupil Units (Weighted ADM)	
		1. Pre- Kindergarten Handicapped	2. Kindergarten	3. Elementary (Grades 1-6)	4. Secondary (Grades 7-12)	5. Total (Pre-K thru Grade 12)	6. Percent Minority	7. Percent Attendance	8. Percent Transported	9. Total Staff (FTE)	10. Pupil-Staff Ratio	11. Auditor Percent	12. Equalized Percent	13. Resident Pupil Units	14. Total Pupil Units
68 ROSEAU															
BADGER	676	1	6	123	112	242	.0	94.4	66	21	11.4	100.15	93.44	276	272
GREENBUSH (ICA)	678	3	21	188	198	410	.3	95.4	75	27	13.2	66.94	62.52	466	463
ROSEAU	682	9	95	653	602	1,359	.8	95.1	77	87	15.8	71.03	67.83	1,518	1,533
WARROAD	690	10	109	710	622	1,451	6.3	93.9	96	95	15.4	58.20	57.62	1,608	1,614
69 ST. LOUIS															
CHISHOLM	695	5	67	478	512	1,062	4.3	93.6	76	67	15.8	44.96	38.58	1,198	1,202
DULUTH	709	54	1,010	6,563	6,245	13,872	7.5	93.8	70	926	15.0	66.77	58.89	15,470	15,616
ELY	696	5	57	379	394	835	4.4	94.9	55	57	16.2	51.88	38.96	938	1,040
EVELETH-GILBERT	2154	7	119	753	778	1,657	3.9	93.5	75	109	15.1	43.85	38.06	1,858	1,872
FLOODWOOD	698	2	28	168	145	343	1.1	95.0	77	26	13.6	56.28	53.02	379	394
HERMANTOWN	700	7	124	797	790	1,718	2.7	94.3	100	104	17.6	65.00	57.85	1,920	2,046
HIBBING	701	18	223	1,403	1,758	3,402	2.0	93.7	81	224	15.8	52.55	46.56	3,872	4,072
MESABI EAST	2711	8	112	601	807	1,528	1.3	94.4	81	87	17.1	46.46	41.17	1,741	1,728
MOUNTAIN IRON-BUHL	712	6	52	398	451	907	2.5	94.1	80	52	14.0	30.57	27.09	1,030	837
NETT LAKE(ASE)	707		11	35	41	87	100.0	90.5	61	8	5.3	93.40	74.81	94	87
PROCTOR	704	8	131	1,005	1,073	2,217	1.2	95.2	84	133	16.4	64.67	54.71	2,507	2,491
ST. LOUIS CO.(ASE)	2142	14	226	1,566	1,710	3,516	10.7	94.0	86	235	13.2	50.04	41.93	3,970	3,572
VIRGINIA	706	12	156	823	959	1,950	3.9	94.3	100	151	14.8	46.61	41.25	2,192	2,538
70 SCOTT															
BELLE PLAINE	716	7	93	431	493	1,024	1.3	95.0	73	71	14.6	67.72	55.39	1,140	1,167
JORDAN	717	5	74	463	547	1,089	.4	93.3	80	64	16.2	70.09	57.61	1,232	1,198
NEW PRAGUE	721	7	148	900	933	1,988	.6	96.2	86	128	16.3	55.25	45.19	2,223	2,366
PRIOR LAKE	719	26	285	1,762	1,603	3,676	1.4	94.4	95	198	18.0	62.56	51.86	4,077	3,992
SHAKOPEE	720	19	244	1,307	1,318	2,888	4.2	93.2	71	178	16.5	65.54	59.25	3,211	3,311
71 SHERBURNE															
BECKER	726	6	92	699	506	1,303	.4	94.8	89	92	14.9	31.64	31.23	1,431	1,520
BIG LAKE	727	10	135	803	646	1,594	1.8	93.7	86	94	16.2	65.66	56.86	1,748	1,689
ELK RIVER	728	42	544	3,445	3,128	7,159	2.7	95.0	94	424	16.9	66.32	60.09	7,947	8,018
72 SIBLEY															
ARLINGTON (ICA)	731	3	50	332	393	778	2.3	93.6	85	45	15.9	70.68	62.41	882	863
G.F.W.	2365	1	61	465	503	1,030	3.0	94.8	84	73	13.8	45.48	41.57	1,166	1,152
GAYLORD (ICA)	732	5	46	282	290	623	8.2	94.3	79	45	14.6	60.59	54.47	698	706
73 STEARNS															
ALBANY	745	10	97	788	788	1,683	.2	96.3	96	125	13.3	52.74	47.99	1,895	1,887
BELGRADE (ICA)	736	9	29	288	260	586	.5	96.2	88	39	13.9	65.99	61.04	658	619
BROOTEN (ICA)	737	8	20	174	187	389	.7	94.0	69	36	11.1	72.95	65.51	440	440
COLD SPRING	750	9	120	833	1,101	2,063	.9	95.8	88	138	15.6	64.14	57.98	2,361	2,451
HOLDINGFORD	738	3	89	531	549	1,172	.7	95.6	87	86	13.7	50.65	44.98	1,310	1,321
KIMBALL	739	6	64	443	461	974	1.5	94.9	88	68	14.0	62.05	56.16	1,095	1,067
MELROSE	740	20	104	523	807	1,454	.7	95.5	80	102	14.3	67.70	61.00	1,662	1,687
PAYNESVILLE	741	13	100	626	625	1,364	1.1	95.6	95	93	15.1	68.61	62.57	1,523	1,573
SARTELL	748	12	140	1,018	971	2,141	1.3	95.6	87	134	16.2	63.20	60.17	2,393	2,417
SAUK CENTRE	743	13	52	370	729	1,164	1.1	95.6	77	77	15.2	71.50	65.71	1,368	1,391
ST. CLOUD	742	108	776	5,440	5,078	11,402	3.7	94.5	81	744	15.4	56.54	54.27	12,736	12,835
74 STEELE															
BLOOMING PRAIRIE	756	3	60	474	470	1,007	13.4	95.0	59	71	13.9	61.08	53.69	1,133	1,121
ELLEDALE (ICA)	762	6	32	224	234	496	1.2	96.1	78	32	16.4	74.85	.00	558	569
MEDFORD	763	1	29	217	270	517	2.4	95.8	48	42	12.9	41.80	37.16	590	622
OWATONNA	761	23	327	2,204	2,024	4,578	2.7	95.1	65	285	16.1	56.49	50.61	5,093	5,120

District Number	Revenue %			1993 - 94 Expenditures per Pupil Unit																			Other Measures per Pupil Unit				
	15. Federal	16. State	17. Local and Other	18. District and School Admin.	19. District Support Services	20. Regular Instruction	21. Vocational Instruction	22. Exceptional Instruction	23. Instructional Support Services	24. Pupil Support Services	25. Operations and Maintenance	26. Food Service	27. Pupil Transportation	28. Other Oper. Program	29. Total PK-12 Operating Expenditures	30. Community Service	31. Capital Outlay	32. Building Construction	33. Debt Service	34. Operating Funds Balance	35. Change in Funds Balance	36. State and Local Oper. Costs	37. Long Term Debt	38. 1993 Adj. Net Tax Capacity			
676	5	60	35	283	166	2469	104	427	139	14	374	245	234	431	4887	74	243	0	189	1123	53	4077	3383	1,679			
678	7	65	28	303	101	2351	122	641	246	21	610	239	406	74	5113	60	437	0	0	559	164	3980	71	2,006			
682	5	67	28	223	90	2007	66	700	172	50	430	168	327	94	4327	160	534	3418	506	313	6	3707	9898	1,741			
690	5	66	29	323	107	1955	99	497	127	150	428	207	330	79	4304	183	572	120	1035	79	120	3458	15798	1,961			
695	3	69	28	304	115	2061	31	641	180	54	556	112	166	411	4630	113	395	0	333	367-	301	4182	5000	1,291			
709	6	69	25	291	189	1787	174	953	315	213	426	146	265	254	5014	243	280	989	293	212-	46	4360	4953	2,406			
696	4	62	34	272	144	2272	14	534	175	89	520	149	167	164	4499	112	381	9	139	510	73	4025	4089	2,524			
2154	4	67	29	301	127	2270	99	637	206	113	524	148	255	129	4809	102	428	0	267	521	113	4231	2703	1,456			
698	4	58	38	431	189	2225	96	528	126	96	403	261	276	35	4665	138	352	0	0	498	141	4004	302	4,117			
700	2	64	34	298	143	1834	31	433	186	123	368	159	237	133	3943	113	260	0	490	351	18	3469	4300	3,147			
701	4	68	28	289	94	2071	17	612	174	93	515	133	238	293	4528	117	268	0	175	90	161	3968	4043	1,830			
2711	3	63	34	302	103	2177	155	752	138	105	584	136	262	437	5151	103	264	0	0	246-	149	4582	2848	1,982			
712	4	50	46	377	119	2294	223	859	105	62	503	150	446	304	5442	126	571	0	918	402	105	4432	3880	2,099			
707	32	54	14	1057	779	3901	0	2825	742	370	666	348	639	147	11474	190	70	7893	0	422-	52	7160	0	14			
704	4	72	24	254	66	2155	30	519	121	102	325	146	258	108	4085	119	195	0	394	177	8	3558	3150	1,848			
2142	5	53	42	252	94	2016	0	793	176	110	454	169	421	216	5302	92	380	0	414	588	310	4505	2213	3,483			
706	3	62	35	235	94	2099	136	935	145	88	513	144	143	216	4748	90	422	472	301	599	16-	4303	8054	1,880			
716	2	66	32	319	50	2156	71	689	138	56	274	159	352	74	4340	156	161	819	0	51	103	3698	6174	2,830			
717	3	67	30	301	90	2075	81	543	128	105	254	199	339	58	4172	183	236	495	105	188	274	3480	2134	3,162			
721	2	71	27	278	123	1856	72	471	213	134	328	171	238	142	4026	123	294	0	238	115-	173	3526	2494	2,683			
719	2	63	35	176	132	2030	91	523	163	98	307	188	322	35	4063	133	228	0	386	34-	160	3503	3045	3,412			
720	2	55	43	334	125	2171	51	765	302	144	361	169	340	154	4915	158	324	2374	178	509	15-	4330	4422	3,941			
726	2	3	95	393	125	2640	27	462	191	108	824	160	293	66	5289	193	322	2712	646	987	175-	4767	10314	22,633			
727	3	71	26	285	90	2009	25	489	126	56	264	169	288	43	3845	119	156	7492	1303	431	118	3297	11951	1,966			
728	2	67	31	247	75	2003	60	541	186	90	342	217	329	33	4124	108	230	226	381	242	64	3469	5607	2,346			
731	4	68	28	207	92	1966	115	469	107	87	336	190	268	267	4105	158	257	0	0	285	117	3465	304	1,994			
2365	5	57	38	354	86	1888	199	636	130	60	380	217	334	93	4376	121	348	0	0	375	211	3569	27	3,802			
732	3	69	28	228	80	2032	66	533	109	88	244	201	211	90	3880	164	193	0	86	440	35-	3371	1053	2,644			
745	5	78	17	271	104	2121	40	646	161	91	272	208	215	32	4160	74	389	0	68	475	43-	3586	59	1,322			
736	4	73	23	127	113	2197	0	674	432	119	288	262	266	133	4611	87	854	4596	392	1298-	672	4053	7432	1,340			
737	9	63	28	459	90	2641	281	868	42	22	334	217	411	85	5450	240	653	6760	461	1515-	264	4446	9102	2,025			
750	4	69	27	320	67	2208	30	490	88	148	379	235	327	55	4347	137	189	890	429	200	169	3654	5053	2,048			
738	5	83	12	297	105	2004	160	512	171	26	350	173	158	59	4016	75	347	0	330	91-	62	3499	3704	960			
739	6	76	18	334	49	1989	96	594	186	58	224	220	372	57	4179	142	375	0	360	259	56	3402	3130	1,424			
740	6	66	28	197	70	2184	82	712	157	81	228	187	394	68	4360	138	266	4711	342	260	296-	3543	7244	1,878			
741	4	73	23	268	88	2010	139	550	129	56	241	199	238	85	4002	117	204	107	427	348	96	3463	5129	1,749			
748	2	71	27	187	73	2135	60	594	198	63	369	182	236	24	4120	99	207	1573	380	453	108-	3644	7250	1,970			
743	5	69	26	259	132	2001	113	630	177	82	339	163	256	94	4246	140	366	460	0	104	59	3530	4700	1,872			
742	4	58	38	156	97	1853	42	1027	292	100	328	184	237	106	4423	178	376	26	199	240	85-	3882	2057	3,434			
756	5	73	22	247	79	2175	70	528	157	92	286	228	262	74	4198	71	172	451	0	522	29	3573	2943	2,141			
762	5	60	35	509	95	1812	36	661	86	34	327	199	229	54	4042	95	220	4889	510	761	76-	3455	6980	2,773			
763	3	68	29	340	122	2352	90	302	104	84	313	198	79	105	4089	127	201	0	0	58-	355-	3715	121	2,752			
761	4	64	32	359	40	2002	68	643	118	158	377	190	272	94	4322	145	208	1	1560	244	41	3705	1928	2,721			

Data For School Districts

1993-94 Profiles

Page 42

SCHOOL DISTRICTS

County Number and Name School District Name	District Number	1993-94 Resident Average Daily Membership					Pupil Data			Professional Staff		Tax Capacity Rates		Pupil Units (Weighted ADM)	
		1. Pre- Kindergarten Handicapped	2. Kindergarten	3. Elementary (Grades 1-6)	4. Secondary (Grades 7-12)	5. Total (Pre-K thru Grade 12)	6. Percent Minority	7. Percent Attendance	8. Percent Transported	9. Total Staff (FTE)	10. Pupil-Staff Ratio	11. Auditor Percent	12. Equalized Percent	13. Resident Pupil Units	14. Total Pupil Units
75 STEVENS															
CHOKIO-ALBERTA	771	3	22	149	155	329	1.3	96.2	79	25	12.8	75.21	67.38	369	365
HANCOCK	768	2	20	131	160	313	.0	94.6	60	19	16.1	60.66	54.17	356	351
MORRIS (ASE)	769	6	78	497	565	1,146	3.7	95.2	91	85	14.5	67.53	64.22	1,294	1,415
76 SWIFT															
APPLETON (CSF)	784	2	39	261	307	609	6.9	94.4	84	19	12.8	50.30	34.94	690	694
BENSON	777	6	71	548	601	1,226	2.1	94.4	68	82	15.1	55.76	47.17	1,389	1,418
KERKHOVEN-MURDOCK-SUN	775	3	42	288	299	632	1.1	95.5	84	48	13.0	78.89	66.27	710	709
77 TODD															
BERTHA-HEWITT	786	4	40	270	293	607	2.6	94.6	82	49	12.4	61.23	56.82	683	685
BROWERVILLE	787	3	30	199	266	498	.4	94.8	74	35	15.7	56.66	50.32	570	626
CLARISSA (ICA)	789	3	26	167	147	343	3.7	95.6	62	24	13.5	52.88	49.02	380	332
EAGLE BEND (ICA)	790	2	21	138	187	348	3.9	92.4	74	22	12.7	58.98	57.57	399	387
GREY EAGLE (ICA)	791	3	17	150	142	312	.7	97.6	68	12	12.0	66.79	55.24	350	283
LONG PRAIRIE (ICA)	792	10	76	491	603	1,180	1.1	94.6	63	88	14.3	67.22	59.08	1,342	1,372
STAPLES	793	8	92	592	730	1,422	1.9	94.2	97	104	15.6	64.98	.00	1,616	1,884
78 TRAVERSE															
BROWNS VALLEY	801	1	17	89	83	190	12.4	94.4	61	26	12.0	56.17	49.99	209	402
WHEATON	803	3	25	221	220	469	2.9	94.9	66	38	13.8	56.12	50.17	531	590
79 WABASHA															
ELGIN-MILLVILLE	806	4	42	280	235	561	3.3	96.3	81	40	15.1	49.87	43.08	621	666
LAKE CITY	813	12	101	639	653	1,405	2.6	95.9	78	97	14.3	57.60	50.34	1,572	1,563
PLAINVIEW	810	12	77	542	531	1,162	1.8	96.5	68	80	14.6	70.47	62.15	1,303	1,318
WABASHA-KELLOGG	811	8	47	349	466	870	.0	94.2	99	59	14.3	57.90	50.49	1,000	978
80 WADENA															
MENAHGA	821	2	53	337	322	714	.0	94.4	91	48	15.4	63.35	58.10	795	818
SEBEKA	820	3	43	287	308	641	.6	94.8	92	43	15.1	57.13	54.50	721	733
VERDALE	818	3	23	168	212	406	.0	95.5	92	35	12.6	98.45	93.93	464	508
WADENA-DEER CREEK	2155	11	104	612	711	1,438	.5	95.3	68	112	12.6	66.93	63.86	1,620	1,596
81 WASECA															
JANESVILLE-WALDORF-PE	2835	19	41	380	522	962	1.9	94.9	64	71	12.7	55.52	48.47	1,114	1,062
NEW RICHLAND (ICA)	827	5	42	273	297	617	.9	95.3	61	45	13.1	62.37	.00	694	686
WASECA	829	25	183	982	1,082	2,272	3.4	93.9	70	162	14.2	63.01	58.28	2,542	2,597
82 WASHINGTON															
FOREST LAKE	831	25	510	3,587	3,472	7,594	2.9	93.9	94	451	16.8	60.73	53.68	8,498	8,505
MAHTOMEDI	832	12	166	1,206	997	2,381	2.0	94.4	100	148	16.3	69.66	61.20	2,636	2,698
SOUTH WASHINGTON CO.	833	23	939	6,586	5,436	12,984	6.1	94.5	71	711	18.2	72.08	63.73	14,369	14,423
STILLWATER	834	35	495	4,066	3,785	8,381	2.6	94.6	85	466	17.9	64.12	55.35	9,402	9,387
83 WATONWAN															
BUTTERFIELD	836	3	15	123	131	272	17.5	94.5	53	26	10.2	65.33	64.02	307	301
MADLIA	837	5	40	239	329	613	17.6	95.8	63	51	11.8	68.48	67.65	702	696
ST. JAMES	840	10	99	633	596	1,338	13.4	95.2	81	95	13.9	52.84	48.98	1,493	1,475
84 WILKIN															
BRECKENRIDGE	846	7	64	486	512	1,069	4.6	94.9	70	68	15.6	50.50	45.20	1,207	1,217
CAMPBELL-TINTAH	852	2	17	123	108	250	.0	94.8	64	20	11.8	62.95	56.53	278	260
ROTHSAY	850		10	104	128	242	5.7	95.7	100	24	10.7	52.85	47.51	279	297
85 WINONA															
LEWISTON	857	4	41	367	373	785	.9	96.0	71	56	15.2	50.13	44.42	888	954
ST. CHARLES	858	8	83	520	479	1,090	9.7	95.9	53	70	15.5	53.60	46.15	1,210	1,203
WINONA	861	23	328	2,255	2,233	4,839	3.9	94.4	69	318	14.8	52.12	46.91	5,419	5,313

Data For School Districts

1993-94 Profiles

Page 43



District Number	Revenue %			1993 - 94 Expenditures per Pupil Unit																	Other Measures per Pupil Unit				
	15. Federal	16. State	17. Local and Other	18. District and School Admin.	19. District Support Services	20. Regular Instruction	21. Vocational Instruction	22. Exceptional Instruction	23. Instructional Support Services	24. Pupil Support Services	25. Operations and Maintenance	26. Food Service	27. Pupil Transportation	28. Other Oper. Program	29. Total PK-12 Operating Expenditures	30. Community Service	31. Capital Outlay	32. Building Construction	33. Debt Service	34. Operating Funds Balance	35. Change in Funds Balance	36. State and Local Oper. Costs	37. Long Term Debt	38. 1993 Adj. Net Tax Capacity	
771	7 48	45		335	110	2359	115	754	192	99	450	238	234	112	4997	200	252	0	0	956	68 -	4261	257	3,948	
768	5 71	24		296	166	2130	72	431	169	76	347	200	115	102	4103	103	313	0	0	575	6 -	3662	110	1,784	
769	4 64	32		225	62	2139	129	541	191	106	301	170	162	82	4108	239	197	2	309	646	195	3619	3484	2,147	
784	5 68	27		234	102	1691	113	672	126	146	292	244	264	113	3998	139	265	0	0	248 -	399 -	3232	80	2,978	
777	6 62	32		228	79	1851	200	668	185	81	331	214	185	61	4084	158	427	1456	179	707	278 -	3493	3031	2,416	
775	6 55	39		270	113	2289	50	726	96	58	341	200	403	105	4650	75	550	7009	651	381	130	3803	17546	2,942	
786	8 83	9		269	71	1975	199	771	231	104	258	219	349	61	4505	91	232	0	210	683	508	3642	4753	666	
787	7 79	14		271	82	1815	238	694	77	30	496	227	273	23	4225	72	101	0	788	731	106	3506	1498	1,110	
789	21 86	7		257	0	2219	189	419	101	56	136	0	384	76	3836	125	273	0	435	3	328 -	3441	4646	698	
790	17 71	12		386	104	1876	169	1037	163	55	267	439	352	78	4926	100	395	0	90	268	100	3522	518	739	
791	9 60	31		253	121	3681	0	743	164	24	224	204	348	102	5862	184	504	0	0	659 -	383 -	5006	0	2,049	
792	5 76	19		254	47	2478	204	541	149	102	279	211	321	54	4639	116	292	0	1467	415	60 -	3943	1511	1,436	
793	5 77	18		269	137	1920	182	667	155	112	349	196	258	64	4308	96	347	1	2797	702	257	3605	2939	1,156	
801	10 39	51		409	169	2502	0	769	138	93	273	211	113	55	4732	93	148	0	0	823	134 -	4093	65	1,880	
803	4 57	39		456	30	2407	26	624	85	72	539	231	313	111	4894	117	134	0	0	210	246	4193	110	4,293	
806	4 77	19		271	55	2008	24	645	61	33	307	245	308	79	4035	57	175	0	127	93	65 -	3409	199	1,795	
813	3 68	29		258	71	2067	190	450	162	146	297	222	263	79	4204	101	163	371	146	479	106	3631	2117	2,454	
810	3 71	26		246	96	2045	69	469	131	96	315	180	262	80	3989	95	317	1644	328	555	28 -	3444	3316	1,750	
811	4 68	28		298	63	1916	104	535	165	91	285	195	346	65	4063	78	502	69	448	470	42 -	3401	7684	2,410	
821	8 75	17		289	100	1993	103	452	129	75	326	260	239	42	4009	72	571	397	457	513	56 -	3350	11588	1,298	
820	7 76	17		292	89	1754	193	716	112	71	340	218	267	128	4181	82	299	0	144	768	145	3479	1981	1,090	
818	8 74	18		322	116	2106	167	700	102	43	226	250	201	132	4366	128	326	565	0	139	59 -	3665	7567	1,318	
2155	7 68	25		281	121	2072	192	1074	148	94	346	188	192	124	4832	108	222	42	629	355	53	4082	9278	1,346	
2835	5 61	34		328	90	2158	60	808	140	41	307	191	277	91	4491	65	234	0	0	559	431	3788	160	2,468	
827	4 54	42		379	182	2003	163	531	105	90	288	155	225	62	4183	108	243	90	537	775	2	3649	5129	3,133	
829	6 59	35		278	156	2025	125	835	172	145	329	222	230	82	4600	327	501	0	570	197	44	3729	1211	2,282	
831	3 63	34		274	67	2093	60	489	221	100	304	181	279	61	4129	163	251	6	231	231	141 -	3551	2409	2,766	
832	2 52	46		322	138	2091	88	597	124	89	392	139	237	112	4328	153	324	27	563	229 -	257	3732	8174	4,142	
833	2 62	36		219	145	2003	94	566	151	110	341	171	192	57	4049	195	353	865	426	567	54	3605	6922	2,815	
834	2 49	49		265	102	2470	47	468	163	257	366	168	234	200	4740	158	312	154	318	521	3 -	4148	7163	4,431	
836	5 53	42		346	146	2370	84	508	105	30	407	182	235	110	4522	79	73	0	0	228 -	289	3917	36	3,441	
837	5 57	38		323	84	2043	70	878	114	91	338	227	334	105	4607	113	194	0	0	502	336	3848	160	2,827	
840	6 66	28		313	68	2077	99	672	145	190	361	197	288	82	4493	173	275	0	161	477	175 -	3826	212	2,360	
846	5 66	29		242	70	1995	23	729	164	81	530	196	175	116	4321	107	283	0	96	778	209	3798	253	2,794	
852	9 32	59		501	153	2381	381	731	114	62	435	236	245	156	5395	0	478	0	0	487	607	4752	0	6,736	
850	3 50	47		534	186	2407	499	336	753	138	459	274	414	20	6022	111	917	0	0	1078	634 -	4973	172	3,030	
857	4 69	27		276	92	1985	83	660	93	101	318	235	233	105	4180	146	372	0	186	148 -	250 -	3580	281	2,125	
858	5 77	18		219	93	2201	60	458	160	73	236	232	213	33	3977	95	260	0	44	495	17	3423	63	1,671	
861	3 66	31		250	74	1905	45	810	138	116	329	207	334	151	4360	184	201	0	0	207	64	3720	155	2,973	

# SCHOOL DISTRICTS

[illegible]

## SCHOOL DISTRICTS

[illegible]





		1993-94 Resident Average Daily Membership					Pupil Data			Professional Staff		Tax Capacity Rates		Pupil Units (Weighted ADM)	
		1. Pre-Kindergarten Handicapped	2. Kindergarten	3. Elementary (Grades 1-6)	4. Secondary (Grades 7-12)	5. Total (Pre-K thru Grade 12)	6. Percent Minority	7. Percent Attendance	8. Percent Transported	9. Total Staff (FTE)	10. Pupil-Staff Ratio	11. Auditor Percent	12. Equalized Percent	13. Resident Pupil Units	14. Total Pupil Units
KANDIYOHI		45	511	3,514	3,311	7,381	10.4	93.7	87	572	13.0	62.60	60.97	8,246	8,485
MCLEOD		54	434	2,795	2,961	6,244	3.3	93.7	84	385	16.3	59.56	50.27	7,014	7,138
MEEKER		42	427	2,602	2,638	5,709	2.9	94.6	93	380	14.9	62.68	57.49	6,383	6,328
RENVILLE		32	225	1,453	1,420	3,130	9.3	95.2	85	215	14.2	54.94	52.27	3,497	3,501
REGION 06E		173	1,597	10,364	10,330	22,464	6.4	94.1	87	1,552	14.5	60.20	55.57	25,139	25,453
BIG STONE		7	91	627	564	1,289	2.8	96.2	67	104	13.0	49.15	42.82	1,433	1,578
CHIPPEWA		15	190	1,155	1,210	2,570	2.6	94.3	70	186	13.9	63.58	88.51	2,879	2,987
LAC QUI PARLE		9	109	761	734	1,613	1.9	95.3	70	82	15.0	59.41	54.31	1,808	1,789
SWIFT		11	152	1,097	1,207	2,467	2.4	94.7	76	149	14.1	60.77	50.84	2,791	2,820
YELLOW MEDICINE		15	128	1,112	1,176	2,431	4.7	95.5	70	163	14.4	60.63	154.09	2,759	2,705
REGION 06W		57	670	4,752	4,891	10,370	3.0	95.1	71	684	14.0	59.68	69.73	11,670	11,880
CHISAGO		31	532	3,355	3,005	6,923	1.4	92.5	92	391	17.4	59.09	53.51	7,669	7,614
ISANTI		38	412	2,690	2,389	5,529	2.6	92.4	87	332	16.9	53.63	49.86	6,137	6,253
KANABEG		17	182	1,298	1,205	2,702	2.9	93.7	86	171	15.7	63.47	59.50	3,016	3,005
MILLE LACS		56	401	2,736	2,719	5,912	5.4	93.4	89	389	15.2	66.98	58.32	6,634	6,658
PINE		16	311	2,071	2,114	4,512	4.5	93.8	87	315	14.5	59.26	76.37	5,061	5,186
REGION 07E		158	1,838	12,150	11,432	25,578	3.3	93.0	89	1,598	16.0	60.30	58.00	28,517	28,717
BENTON		35	373	2,344	2,322	5,074	1.1	93.9	87	314	15.9	63.89	58.45	5,667	5,609
SHERBURNE		58	771	4,947	4,280	10,056	2.3	94.8	92	610	16.5	44.58	42.46	11,127	11,227
STEARNS		211	1,591	11,034	11,556	24,392	2.2	95.1	84	1,642	14.9	59.20	55.87	27,447	27,689
WRIGHT		98	1,180	7,514	7,068	15,860	1.4	94.9	92	1,021	15.5	62.08	56.70	17,651	17,812
REGION 07W		402	3,915	25,839	25,226	55,382	1.9	94.9	88	3,587	15.4	55.91	52.34	61,893	62,337
COTTONWOOD		9	181	1,051	1,091	2,332	8.3	95.0	63	179	12.9	65.84	58.31	2,609	2,649
JACKSON		13	137	932	946	2,028	4.8	95.4	62	160	13.0	59.39	55.57	2,278	2,256
LINCOLN		8	90	534	610	1,242	1.1	96.1	84	80	14.2	68.21	64.15	1,400	1,460
LYON		25	340	2,024	2,307	4,696	5.6	95.2	76	328	14.7	51.00	53.58	5,293	5,564
MURRAY		12	85	735	764	1,596	.9	96.5	74	119	13.6	54.67	125.90	1,808	1,836
NOBLES		27	278	1,712	1,751	3,768	12.3	94.4	73	263	14.0	57.79	50.83	4,216	4,218
PIPESTONE		10	165	1,003	924	2,102	4.4	95.2	60	147	15.0	56.69	50.18	2,332	2,302
REDWOOD		19	210	1,397	1,536	3,162	2.5	94.9	82	243	13.0	64.36	59.33	3,567	3,692
ROCK		16	114	882	845	1,857	2.7	95.6	62	136	13.9	57.89	203.52	2,085	2,251
REGION 08		139	1,600	10,270	10,774	22,783	5.5	95.2	71	1,655	13.8	58.68	60.35	25,588	26,228
BLUE EARTH		79	742	4,839	4,691	10,351	4.1	94.2	67	657	15.8	58.64	52.76	11,569	11,638
BROWN		24	323	2,033	2,110	4,490	4.2	95.5	73	312	14.4	56.31	52.48	5,032	5,068
FARIBAULT		33	199	1,396	1,469	3,097	6.2	95.3	60	223	13.5	59.49	57.53	3,488	3,644
LESUEUR		54	374	2,250	2,422	5,100	3.9	94.4	63	335	14.6	65.12	54.64	5,721	5,560
MARTIN		29	274	1,889	2,052	4,244	3.0	94.5	78	274	15.6	57.75	56.65	4,790	4,902
NICOLLET		23	137	1,046	1,136	2,342	2.7	93.4	73	154	15.6	69.00	59.13	2,648	2,741
SIBLEY		9	157	1,079	1,186	2,431	4.2	94.3	83	163	14.7	54.32	49.09	2,748	2,721
WASECA		49	266	1,635	1,901	3,851	2.7	94.3	67	278	13.7	61.02	69.07	4,351	4,345
WATONWAN		18	154	995	1,056	2,223	15.1	95.3	73	172	12.7	59.80	57.05	2,504	2,472
REGION 09		318	2,626	17,162	18,023	38,129	4.5	94.5	70	2,568	14.7	59.36	55.32	42,852	43,093

Data For School Districts

1993-94 Profiles

Page 48

# COUNTIES, DEVELOPMENT REGIONS & STATE

[illegible]

Revenue %			1993 - 94 Expenditures per Pupil Unit																Other Measures per Pupil Unit				
15. Federal	16. State	17. Local and Other	18. District and School Admin.	19. District Support Services	20. Regular Instruction	21. Vocational Instruction	22. Exceptional Instruction	23. Instructional Support Services	24. Pupil Support Services	25. Operations and Maintenance	26. Food Service	27. Pupil Transportation	28. Other Oper. Program	29. Total PK-12 Operating Expenditures	30. Community Service	31. Capital Outlay	32. Building Construction	33. Debt Service	34. Operating Funds Balance	35. Change in Funds Balance	36. State and Local Oper. Costs	37. Long Term Debt	38. 1993 Adj. Net Tax Capacity
4 41 55	562	89	2747	11	528	187	45	544	242	299	109	5362	94	502	0	188	298	251	4613	1788	6,438		
7 54 39	480	80	2283	84	643	141	68	432	252	304	100	4867	119	439	81	65	601	145	4075	775	3,630		
6 55 39	302	53	2272	448	682	95	38	381	251	409	86	4996	108	356	0	161	251	132	3984	676	3,332		
5 69 26	337	112	1964	153	779	218	78	353	201	224	124	4543	126	393	3723	477	317	25	3905	8844	1,768		
5 66 29	304	119	2085	175	620	166	94	353	230	217	111	4474	101	305	0	212	382	27	3856	1018	2,445		
7 66 27	527	116	2086	57	512	112	66	440	235	245	101	4496	117	338	0	41	279-	208	3670	312	1,943		
5 66 29	278	104	2059	89	590	160	86	447	198	331	109	4451	152	518	1400	643	303	24-	3662	10701	1,860		
5 62 33	354	103	2146	152	633	161	77	398	226	273	108	4631	117	391	776	293	332	43	3903	3856	2,696		
11 68 21	274	138	2098	119	966	167	66	463	221	318	274	5105	145	358	1180	671	419	23	4028	5197	1,638		
7 69 24	281	83	2108	86	622	193	93	296	219	336	122	4438	101	239	170	0	477	158	3635	6225	2,741		
7 58 35	308	107	1845	139	744	206	146	356	215	275	70	4410	121	358	119	92	226	125	3681	2277	3,626		
5 60 35	279	30	2005	0	542	167	70	366	319	356	108	4242	156	647	110	5159	755	151	3509	15136	2,059		
17 66 17	398	116	2436	169	994	241	79	395	278	399	245	5752	82	402	0	170	21-	108-	4316	1802	1,833		
10 66 24	294	117	2082	117	861	185	86	410	231	323	205	4911	129	363	674	671	364	51	3915	5000	2,177		
7 56 37	321	201	2026	172	565	163	116	400	230	338	215	4747	81	296	119	284	600	65	3839	4799	3,655		
6 67 27	317	151	2041	93	680	161	133	350	166	267	90	4450	162	310	128	824	302	23	3777	4653	2,242		
6 32 62	338	115	2417	17	592	135	104	426	141	250	103	4639	165	292	0	0	731	311	3931	297	7,717		
5 54 41	266	109	2239	94	820	194	124	419	160	348	128	4900	104	466	4	184	35-	2-	4161	2149	3,778		
5 60 35	302	115	2303	68	646	115	150	490	196	254	147	4785	119	266	585	62	269	101-	4101	6705	2,526		
4 58 38	332	76	2107	92	563	163	109	456	145	278	316	4638	144	315	315	48	512-	414	4018	2120	2,675		
5 65 30	287	142	2030	107	793	227	147	455	148	265	239	4841	164	311	462	302	80	81	4219	4272	2,333		
5 62 33	292	136	2083	102	756	203	138	437	157	281	201	4787	148	331	334	319	102	69	4126	3985	2,690		
7 68 25	309	97	1973	114	678	155	115	314	195	356	64	4371	111	253	46	163	641	144	3605	1694	2,363		
5 74 21	252	99	2047	63	930	196	102	263	157	253	121	4483	138	264	388	161	284	92	3870	2340	2,209		
5 60 35	215	63	2067	67	597	152	125	309	205	219	80	4098	111	321	1899	1391	261	41-	3512	4597	2,855		
5 65 30	361	135	2245	122	502	199	82	365	214	264	215	4704	171	287	2	74	133-	233-	3999	468	3,184		
5 66 29	270	89	2021	130	638	147	103	300	176	304	64	4243	115	322	344	190	496	35	3579	3373	2,677		
5 61 34	212	106	2099	100	521	106	78	323	245	301	95	4186	142	405	0	775	676	356	3478	10123	2,085		
5 62 33	256	87	2176	117	559	187	100	334	187	167	91	4261	210	225	1	205	690	111	3737	2299	2,412		
6 50 44	437	86	2446	16	683	107	81	431	223	232	88	4830	107	140	0	0	383	139	4154	97	3,611		
5 57 38	329	102	2120	155	663	256	88	504	215	226	106	4763	92	418	0	66	780	138	4135	200	3,453		
5 66 29	268	92	2063	97	696	167	104	312	187	271	92	4350	127	296	485	386	430	70	3701	3090	2,567		
10 48 42	319	129	2220	56	927	249	109	359	223	346	73	5008	124	465	1188	988	519	2	4007	4743	4,650		
5 50 45	224	71	1940	184	759	191	109	336	202	287	80	4383	112	251	20	340	280	18	3888	2565	3,900		
6 73 21	311	88	1904	193	710	140	78	343	210	356	94	4427	125	339	99	224	211	10	3630	2203	1,534		
8 77 15	272	89	2157	186	666	152	88	312	212	305	60	4499	104	298	0	1454	459	98	3737	2406	1,154		
7 72 21	291	109	1995	169	811	130	78	324	219	219	108	4453	97	330	186	406	445	33	3740	8107	1,280		
7 62 31	274	91	2017	166	763	174	95	336	210	307	82	4514	114	320	229	610	349	28	3804	3415	2,710		

# COUNTIES, DEVELOPMENT REGIONS & STATE

	Revenue %			1993 - 94 Expenditures per Pupil Unit																			Other Measures per Pupil Unit				
	15. Federal	16. State	17. Local and Other	18. District and School Admin.	19. District Support Services	20. Regular Instruction	21. Vocational Instruction	22. Exceptional Instruction	23. Instructional Support Services	24. Pupil Support Services	25. Operations and Maintenance	26. Food Service	27. Pupil Transportation	28. Other Oper. Program	29. Total PK-12 Operating Expenditures	30. Community Service	31. Capital Outlay	32. Building Construction	33. Debt Service	34. Operating Funds Balance	35. Change in Funds Balance	36. State and Local Oper. Costs	37. Long Term Debt	38. 1993 Adj. Net Tax Capacity			
	4 64 32			278	98 2096	138	912 143	85	287	191	293 92	4611	132	317	2589	407	180	50-	3956	6596	2,529						
	3 67 30			302	102 1941	54	490 134	103	353	193	286 110	4066	121	240	48	282	10	62-	3465	2686	2,349						
	4 70 26			285	109 2039	65	579 146	83	306	185	316 137	4249	136	238	446	222	483	1	3642	4025	1,886						
	6 54 40			301	105 2089	43	576 114	84	342	194	267 74	4189	139	361	0	17	552	198	3440	127	3,690						
	4 65 31			290	103 2037	83	664 137	89	317	190	293 106	4310	131	282	987	272	261	6-	3669	3953	2,477						
	6 63 31			335	123 2062	178	706 105	85	354	237	303 129	4616	168	348	0	26	62-	89-	3887	145	2,816						
	7 64 29			258	81 1886	144	736 122	54	334	361	250 86	4310	169	290	166	32	589	192	3504	3904	2,538						
	6 63 31			248	128 1994	83	610 142	120	379	221	271 78	4274	160	384	0	4	395	257	3542	469	2,739						
	6 61 33			240	94 1922	141	684 149	91	324	218	259 85	4206	133	418	2494	254	388	204-	3507	5997	2,689						
	5 61 34			310	107 2077	28	621 135	84	393	222	296 53	4328	190	366	0	94	366	75	3647	707	2,922						
	6 62 32			274	103 1977	112	674 132	84	354	258	273 83	4324	164	360	634	94	378	45	3594	2655	2,730						
	3 71 26			245	151 1859	120	554 176	100	303	188	215 82	3994	144	409	230	454	244	64-	3509	3847	1,915						
	6 70 24			236	91 2001	184	756 128	134	327	192	197 45	4292	108	272	1458	167	257	5-	3678	2793	1,553						
	5 74 21			272	74 1957	98	600 164	116	336	176	207 34	4035	127	322	80	186	694	136	3466	3833	1,335						
	5 69 26			284	129 1981	98	637 159	109	332	214	335 116	4394	133	330	1026	393	211	26	3614	4359	1,886						
	5 66 29			302	108 1987	67	777 163	165	311	207	291 76	4453	100	280	216	740	593	96	3753	2717	2,025						
	5 70 25			265	117 1951	117	662 158	123	320	197	252 76	4238	124	329	664	401	348	19	3609	3537	1,788						
	4 72 24			233	75 2005	51	615 187	92	269	206	293 75	4101	143	158	222	225	338	22	3420	5272	1,747						
	2 56 42			273	84 2091	50	522 178	87	395	202	318 39	4240	122	232	1656	556	367	42	3619	7209	4,896						
	4 65 31			213	91 1996	64	798 223	90	318	193	259 81	4327	145	342	755	259	192	91-	3735	3609	2,504						
	3 59 38			250	98 2030	58	681 169	106	327	190	311 66	4288	167	206	30	880	347	39	3658	5509	3,012						
	4 62 34			236	90 2024	59	698 196	94	330	195	288 69	4280	147	267	662	487	281	20-	3664	4951	3,010						
	4 51 45			370	121 2272	123	835 133	128	421	223	207 134	4968	169	350	0	48	497	142	4407	776	3,700						
	5 54 41			317	73 2329	95	604 138	84	399	231	262 84	4615	175	299	0	177	685	164	3880	893	3,700						
	5 59 36			297	101 1924	234	518 81	82	323	219	297 87	4163	122	293	44	22	385	49	3457	88	2,651						
	5 60 35			302	98 2010	63	615 137	89	379	211	235 86	4225	114	301	0	1018	531	64	3613	1192	3,103						
	7 62 31			355	135 2036	134	690 138	93	402	204	432 128	4747	174	496	0	0	539	44-	3876	323	3,138						
	5 61 34			297	111 1896	99	1036 307	121	344	223	275 122	4830	152	236	0	428	191	13	4136	151	2,982						
	7 57 36			283	55 2476	79	833 175	77	347	209	408 86	5029	180	492	0	23	1068	162	4045	53	2,719						
	5 52 43			312	106 2165	54	628 168	90	328	231	264 61	4407	126	345	0	1466	236	176	3725	4364	3,522						
	5 63 32			233	101 2061	98	524 124	144	326	179	203 55	4049	173	361	0	0	469	164	3489	83	2,571						
	5 57 38			307	101 2109	95	717 168	101	363	216	274 93	4544	148	336	2	514	481	97	3852	1078	3,155						
	4 59 37			246	97 2028	68	648 170	94	367	188	245 79	4230	164	268	915	1693	349	196	3644	2435	3,338						
	4 60 36			264	82 2034	125	541 193	106	288	218	342 95	4288	145	271	273	132	629	73	3591	1350	3,024						
	4 56 40			319	86 2143	86	584 158	102	345	195	246 92	4358	151	346	4	17	311	54	3780	308	3,171						
	4 67 29			291	99 2031	106	570 128	112	313	197	207 89	4144	148	244	858	1424	160	53-	3584	2625	2,218						
	3 49 48			278	104 2102	103	518 135	72	408	230	292 93	4334	206	663	86	0	397	6-	3838	427	3,757						
	3 66 31			314	97 1905	40	758 155	134	352	176	293 69	4293	101	543	0	1375	81	133	3680	3887	2,358						
	5 63 32			275	86 1951	138	556 117	76	331	204	281 147	4162	144	279	0	22	363	118	3485	377	2,927						
	6 58 36			306	144 2054	115	781 154	111	317	204	241 81	4508	229	395	14	425	382	137	3731	1567	2,465						
	6 61 33			320	82 2103	89	710 131	143	360	204	295 92	4529	144	227	0	96	398	25	3843	176	2,624						
	4 59 37			280	99 2041	94	623 154	102	345	201	265 89	4293	163	345	402	795	349	89	3676	1673	2,968						
Data For School Districts				1993-94 Profiles																			Page 51				



## COUNTIES, DEVELOPMENT REGIONS & STATE

	Revenue %			1993 - 94 Expenditures per Pupil Unit																	Other Measures per Pupil Unit				
	15. Federal	16. State	17. Local and Other	18. District and School Admin.	19. District Support Services	20. Regular Instruction	21. Vocational Instruction	22. Exceptional Instruction	23. Instructional Support Services	24. Pupil Support Services	25. Operations and Maintenance	26. Food Service	27. Pupil Transportation	28. Other Oper. Program	29. Total PK-12 Operating Expenditures	30. Community Service	31. Capital Outlay	32. Building Construction	33. Debt Service	34. Operating Funds Balance	35. Change in Funds Balance	36. State and Local Oper. Costs	37. Long Term Debt	38. 1993 Adj. Net Tax Capacity	
	3 75 22			320	73 2035	69	642	141	91	293	211	237	107		4219	121	324	44	113	24 -	54 -	3643	960	2,004	
	5 73 22			347	96 2166	110	665	146	68	340	241	259	86		4523	131	335	0	539	224	10	3769	1269	1,813	
	4 69 27			288	106 2089	91	686	162	142	397	187	241	163		4552	95	321	1	108	197	19 -	3988	949	2,380	
	3 48 49			272	74 2066	129	639	190	122	314	211	251	119		4386	167	395	1069	635	199	26	3802	5455	4,743	
	4 70 26			302	69 2126	41	509	129	86	301	205	300	122		4190	155	256	41	115	333	120	3635	1082	1,845	
	4 63 33			295	142 1927	120	815	160	102	420	190	231	316		4717	180	296	574	267	130	113	4177	2939	2,521	
	3 54 43			226	110 1970	99	715	289	116	360	173	285	130		4473	201	268	64	419	440	103	4099	2458	3,499	
	4 64 32			242	129 2145	61	980	239	101	351	207	326	60		4840	179	464	0	228	375	40	4154	1627	2,645	
	4 65 31			352	57 2043	68	599	120	132	354	197	251	89		4263	129	203	443	1114	302	2 -	3668	2322	2,638	
	3 70 27			265	74 2019	112	503	139	103	301	207	288	76		4087	88	283	622	261	446	11	3494	3438	2,149	
	4 68 28			249	79 1963	52	735	136	107	313	215	302	126		4275	165	232	0	31	211	19	3654	155	2,663	
	3 62 35			272	96 2032	90	703	195	111	346	197	273	128		4444	161	307	265	386	292	46	3898	2297	2,950	
	3 60 37			269	114 2093	102	744	179	164	342	223	250	99		4579	189	283	28	613	175	62	4134	2788	2,680	
	2 59 39			301	107 1906	54	749	223	129	308	168	369	71		4386	152	190	1607	1865	252	126	3725	10196	3,273	
	2 52 46			274	120 2159	53	635	188	134	353	178	246	81		4420	196	337	614	468	247	55	3888	6477	3,661	
	4 38 58			362	215 2367	96	1012	241	200	427	202	317	181		5620	284	423	497	308	291	128	4914	4270	5,761	
	6 49 45			240	160 2221	83	1101	236	161	453	212	248	248		5365	250	394	493	125	247	18	4633	3862	4,210	
	2 63 35			266	116 2051	73	597	205	114	318	177	315	95		4328	145	262	782	234	129	8 -	3752	3519	3,337	
	2 58 40			253	114 2157	73	523	169	146	343	170	228	101		4275	174	315	401	360	413	6	3747	5982	3,339	
	4 48 48			297	161 2228	84	873	215	168	395	199	276	155		5052	233	364	471	380	262	71	4426	4571	4,340	
	4 55 41			287	131 2134	92	786	196	136	375	198	278	134		4746	187	340	464	414	285	57	4109	3899	3,517	

The chief purpose of this table is to permit easy comparisons of districts with similar enrollment. For example, a superintendent in a district with 600 pupils may want to examine the data for Group 5 (585 to 789 ADM) to see how his/her expenditures compare with other districts of similar size.

	Revenue %			1993 - 94 Expenditures per Pupil Unit																Other Measures per Pupil Unit				
	15. Federal	16. State	17. Local and Other	18. District and School Admin.	19. District Support Services	20. Regular Instruction	21. Vocational Instruction	22. Exceptional Instruction	23. Instructional Support Services	24. Pupil Support Services	25. Operations and Maintenance	26. Food Service	27. Pupil Transportation	28. Other Oper. Program	29. Total PK-12 Operating Expenditures	30. Community Service	31. Capital Outlay	32. Building Construction	33. Debt Service	34. Operating Funds Balance	35. Change in Funds Balance	36. State and Local Oper. Costs	37. Long Term Debt	38. 1993 Adj. Net Tax Capacity
01	7	51	42	422	162	2529	47	675	125	61	421	255	355	118	5170	149	433	94	149	436	3 -	4296	299	3,702
02	7	57	36	375	121	2291	116	564	173	75	396	232	315	115	4773	122	378	145	55	427	6 -	3954	1902	3,252
03	6	63	31	360	128	2178	141	575	136	75	355	223	310	82	4563	118	326	282	449	341	54	3808	2499	2,744
04	5	61	34	330	109	2137	121	590	141	70	362	210	279	93	4441	128	303	272	278	265	5	3754	1824	2,982
05	6	63	31	301	103	2067	115	631	137	97	337	214	299	108	4408	131	361	478	358	316	40	3666	3519	2,529
06	5	63	32	317	97	2079	88	660	156	84	353	200	269	109	4411	136	306	244	562	321	67	3754	3411	2,611
07	5	63	32	280	108	2080	108	652	181	101	349	201	276	88	4423	136	322	705	769	367	41	3730	3413	2,885
08	4	66	30	268	92	2021	84	611	157	113	354	197	258	97	4250	136	323	495	571	296	34	3661	4692	2,238
09	4	58	38	275	120	2090	86	762	203	135	376	193	287	128	4654	184	352	577	296	276	25	4009	3407	3,260
10	4	50	46	282	150	2170	89	883	216	160	385	195	275	156	4959	218	343	443	388	263	77	4346	4299	4,074

The table below lists totals or averages for all districts in each of ten enrollment size groups, based on 1993-94 resident daily members (ADM). For example, Group 1 includes all districts with 239 or fewer ADM and Group 2 includes all districts with 240 to 329 ADM. Each group includes approximately ten percent of the state's school districts.

		1993-94 Resident Average Daily Membership					Pupil Data			Professional Staff		Tax Capacity Rates		Pupil Units (Weighted ADM)	
		1. Pre-Kindergarten Handicapped	2. Kindergarten	3. Elementary (Grades 1-6)	4. Secondary (Grades 7-12)	5. Total (Pre-K thru Grade 12)	6. Percent Minority	7. Percent Attendance	8. Percent Transported	9. Total Staff (FTE)	10. Pupil-Staff Ratio	11. Auditor Percent	12. Equalized Percent	13. Resident Pupil Units	14. Total Pupil Units
1	0 TO 239	39	482	3,158	3,195	6,874	5.8	95.3	77	558	11.6	66.19	71.57	7,703	7,707
2	240 TO 329	51	722	4,866	5,231	10,870	4.1	95.4	73	826	12.4	60.43	57.92	12,252	12,166
3	330 TO 424	89	961	6,780	7,078	14,908	2.8	95.0	78	1,112	13.0	61.67	68.84	16,799	16,966
4	425 TO 584	97	1,378	9,096	9,752	20,323	3.2	95.3	73	1,497	13.4	61.24	59.60	22,881	22,976
5	585 TO 789	177	1,809	12,301	12,649	26,936	5.4	94.7	77	1,870	14.2	58.30	61.97	30,270	30,656
6	790 TO 1074	233	2,487	16,366	17,655	36,741	6.5	94.7	80	2,574	14.4	57.38	53.97	41,379	41,913
7	1075 TO 1439	372	3,667	23,917	23,890	51,846	6.9	94.6	77	3,572	14.6	54.66	51.75	58,058	58,671
8	1440 TO 2149	430	4,726	31,437	31,959	68,552	3.2	94.4	85	4,458	15.5	60.56	54.33	76,885	78,287
9	2150 TO 4439	871	9,177	58,255	56,634	124,937	4.7	93.6	82	8,018	15.5	62.13	56.68	139,402	140,578
10	4440 OR HIGHER	2494	35,804	213,689	181,028	433,015	16.5	93.3	84	27,930	15.4	64.80	63.01	476,832	478,562

The table below lists a variety of summary statistics for each of the 38 variables included in this report. The attendant definitions explain the meaning of these statistics. It may be used to better understand the distribution of a particular variable among Minnesota school districts. For example, percent attendance (column 7) varies little; ninety percent of the school districts are within the narrow range of 92.3% (5th percentile) to 96.4% (95th percentile).

The table may also be used to see how an individual school district compares with other districts in the state. Two examples illustrate the use of the data.

1. A district which has total PK-12 operating expenditures (column 29) of \$4,450 per pupil unit is very near the median value, which is \$4,443. Thus about half the districts in the state have lower and half have higher expenditures.
2. A district with total average daily membership (column 5) of 330 students is between the 20th and 25th percentiles for this variable. Somewhere between 20 and 25 percent of Minnesota school districts have fewer students than this district.

		1993-94 Resident Average Daily Membership					Pupil Data			Professional Staff		Tax Capacity Rates		Pupil Units (Weighted ADM)	
		1. Pre-Kindergarten Handicapped	2. Kindergarten	3. Elementary (Grades 1-6)	4. Secondary (Grades 7-12)	5. Total (Pre-K thru Grade 12)	6. Percent Minority	7. Percent Attendance	8. Percent Transported	9. Total Staff (FTE)	10. Pupil-Staff Ratio	11. Auditor Percent	12. Equalized Percent	13. Resident Pupil Units	14. Total Pupil Units
Lowest Value		0	1	16	8	27	.0	.0	33	0	.0	8.39	.00	28	21
5th Percentile		0	11	80	81	175	.0	92.3	54	12	10.5	47.58	.00	195	194
10th Percentile		1	15	102	106	231	.4	93.0	60	18	11.4	50.50	40.00	265	252
20th Percentile		1	21	145	152	328	.9	93.7	65	24	12.5	54.19	46.57	368	366
25th Percentile		2	24	175	184	387	1.2	93.9	69	27	12.8	55.52	48.41	437	436
30th Percentile		2	28	190	209	422	1.4	94.2	71	32	13.1	56.53	50.32	477	491
40th Percentile		3	41	263	273	581	1.9	94.5	76	43	13.8	58.98	52.44	656	667
Median (50th)		5	53	356	379	789	2.6	94.8	80	56	14.3	61.08	54.50	896	907
60th Percentile		7	77	486	509	1,070	3.4	95.1	84	76	14.8	63.88	57.62	1,202	1,202
70th Percentile		10	99	658	653	1,436	4.9	95.3	87	96	15.2	66.38	59.28	1,608	1,613
75th Percentile		12	119	788	788	1,683	5.8	95.5	89	110	15.5	67.39	60.78	1,893	1,910
80th Percentile		14	162	972	996	2,136	7.1	95.7	91	140	15.9	68.72	62.51	2,393	2,491
90th Percentile		29	328	2,113	1,964	4,425	12.4	96.2	96	289	16.5	73.42	66.54	4,908	4,934
95th Percentile		42	544	3,511	3,128	7,287	15.5	96.4	100	443	17.1	77.22	69.45	8,125	8,224
Highest Value		329	4,535	22,484	16,342	42,989	100.0	99.7	100	3,424	38.1	100.15	93.93	46,236	46,074
State (Total or Avg.)		4853	61,213	379,865	349,071	795,002	11.2	93.8	82	52,415	15.1	62.99	60.52	882,461	888,482



**Lowest Value.** For any specific variable, the lowest value of that variable among all school districts. The table also shows the highest value for each variable.

**XXth Percentile.** For any specific variable, a value chosen such that XX percent of the school districts are below the chosen value. For example, the 10th percentile for total staff (column 9) is 18. This means that ten percent of the school districts have 18 or fewer staff members (FTE). The 25th and 75th percentile are called quartiles; the 10th, 20th, 30th, ... through 90th percentiles are called deciles.

**Median.** For any specific variable, a value chosen such that half of the school districts are below the chosen value and half are above.

**State Total.** For variables 1 - 5 (1993-94) resident average daily membership, 9 (total staff), and 13-14 (pupil units), the state total is simply the sum of the corresponding value for all 395 districts listed in the report. For all other variables, the state total is computed as the sum of the numerators for all districts, divided by sum of the denominators. For these variables, the state total is a form of weighted average.

Example: 
$$\frac{\text{State Total of Pupils}}{\text{State Total of Staff}} = \text{State Total Pupil-Staff Ratio}$$

	Revenue %			1993 - 94 Expenditures per Pupil Unit																	Other Measures per Pupil Unit				
	15. Federal	16. State	17. Local and Other	18. District and School Admin.	19. District Support Services	20. Regular Instruction	21. Vocational Instruction	22. Exceptional Instruction	23. Instructional Support Services	24. Pupil Support Services	25. Operations and Maintenance	26. Food Service	27. Pupil Transportation	28. Other Oper. Program	29. Total PK-12 Operating Expenditures	30. Community Service	31. Capital Outlay	32. Building Construction	33. Debt Service	34. Operating Funds Balance	35. Change in Funds Balance	36. State and Local Oper. Costs	37. Long Term Debt	38. 1993 Adj. Net Tax Capacity	
Low	0	3	3	0	0	1354	0	0	0	0	0	0	79	0	3593	0	0	0	0	1828-	1648-	2614	0	0	
5th	2	36	17	198	51	1817	0	400	73	14	244	142	173	32	3930	64	141	0	0	460-	339-	3351	0	1,291	
10th	2	42	20	225	63	1876	0	436	88	26	269	158	188	43	4005	77	171	0	0	260-	259-	3430	16	1,470	
20th	3	51	25	253	76	1952	33	479	106	52	295	174	223	57	4126	91	204	0	0	51	108-	3510	79	1,780	
25th	3	53	26	265	82	1987	41	504	114	58	305	182	234	61	4179	96	220	0	0	117	68-	3557	121	1,966	
30th	3	56	28	271	88	2007	50	525	126	66	316	185	242	67	4225	102	238	0	0	176	42-	3585	213	2,054	
40th	4	60	30	287	95	2054	65	566	137	78	331	196	259	77	4355	115	270	0	48	259	2	3644	518	2,331	
Med.	4	63	33	302	107	2101	81	624	149	88	351	208	277	88	4443	128	308	0	146	351	49	3784	1302	2,684	
60th	5	66	35	322	119	2169	96	665	162	99	369	217	299	103	4583	142	347	0	210	458	89	3883	2409	2,924	
70th	5	68	39	340	132	2234	113	710	178	113	393	227	327	115	4740	157	387	33	328	554	130	4029	3881	3,363	
75th	6	69	41	354	140	2287	127	743	186	123	409	234	339	128	4836	167	414	110	386	591	151	4102	4426	3,633	
80th	6	70	44	374	152	2345	144	771	198	137	427	240	355	138	4932	185	433	200	441	644	196	4193	5053	3,940	
90th	8	74	53	440	186	2513	199	910	231	159	481	268	410	204	5343	243	562	1074	741	795	311	4477	8095	4,985	
95th	9	76	59	514	214	2692	247	1067	298	193	529	301	468	296	5702	298	649	2669	1467	979	437	4799	10314	6,128	
Hgh.	32	86	96	1057	1222	4516	720	2825	931	1939	2082	1054	1210	538	15297	660	3567	7893	8442	5800	2419	2338	47636	22,633	
Ste.	4	55	41	287	131	2134	92	786	196	136	375	198	278	134	4746	187	340	464	414	285	57	4109	3899	3,517	

