

LEGISLATIVE REFERENCE LIBRARY

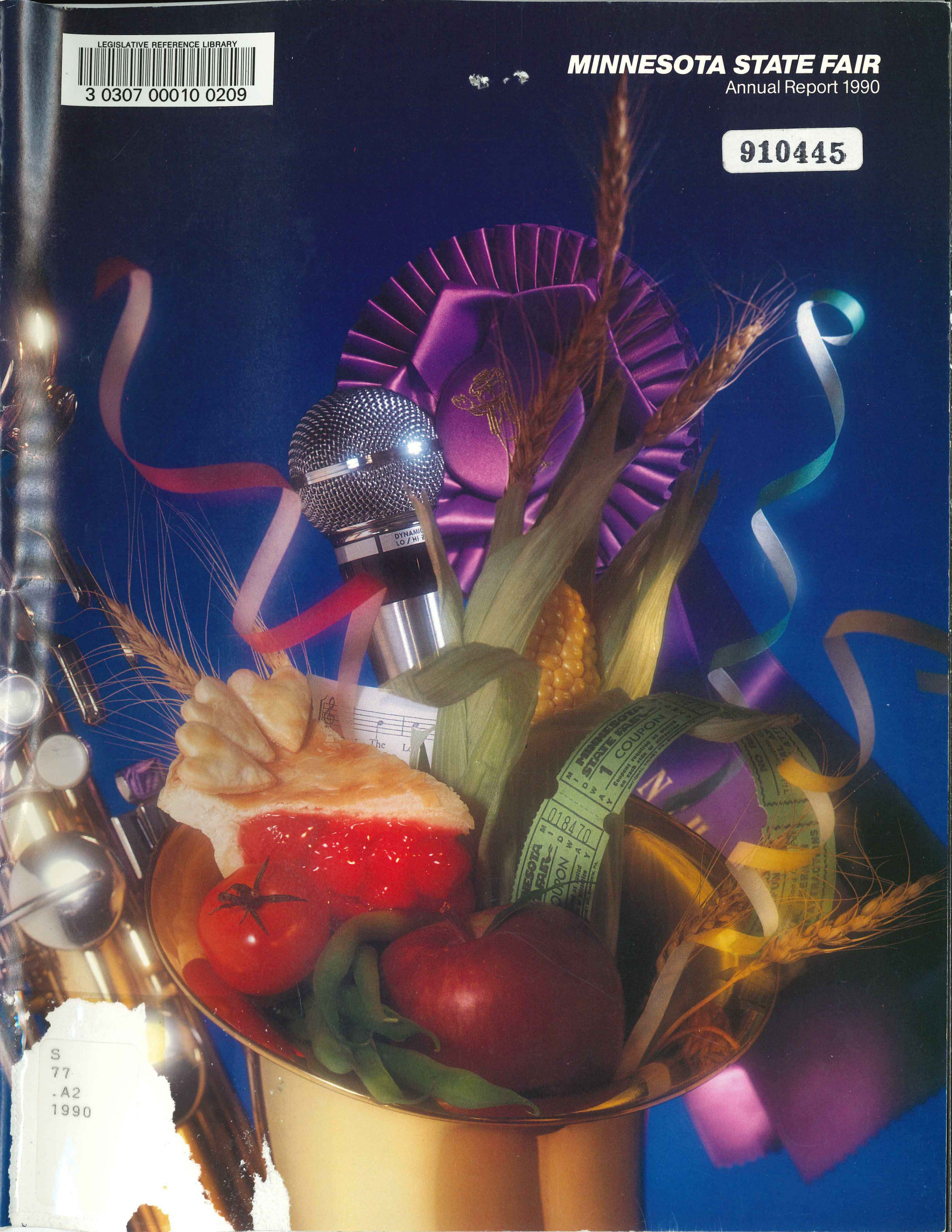


3 0307 00010 0209

MINNESOTA STATE FAIR

Annual Report 1990

910445



S
77
.A2
1990



VISION STATEMENT

The Minnesota State Agricultural Society is a public corporation and an agency of the state. By virtue of State law, it has been given management and control of the State Fairgrounds so that thereon may be exhibited agricultural, industrial and other human products and resources of the state including arts, human skills and science.

Educational as well as entertaining exhibitions of only the highest quality will be presented in an orderly atmosphere where first priority is given to the safety and comfort of those in attendance. Tradition will be honored and, when undertaken, change will be consistent with contemporaneous society.

Those in whom the society entrusts the functions of management and control will do so with the guidance of clearly stated and periodically updated position and job descriptions, goals and objectives, and rules and regulations, and with strict adherence to the professional standards established by and for the fair and exposition industry.

Pricing, purchasing and all other fiscal matters will be conducted in a responsible manner. Friendly, but businesslike relationships will be maintained with all, including neighbors, elected and appointed public officials, exhibitors, media representatives, vendors and suppliers.

Finally, the society, its board and executive officer will provide employees with the means to carry out their tasks in a workplace that is productive and pleasant.

This report is printed on 100 percent recycled paper.

TABLE OF CONTENTS

General Manager's Letter	3
1990 Summary	4
Board of Managers	9
Staff	10
Audit Opinion Letter	12
Balance Sheet	13
Income and Expense Statement	14
Retained Earnings Statement	14
Statement of Cash Flows	15
Footnotes	16
Supporting Schedules	18
Auditor's Management Letter	23
1990 Meeting Minutes	26



MINNESOTA STATE FAIR

Honorable Rudy Perpich
Governor
State of Minnesota
130 Capitol
St. Paul, MN 55155

Dear Governor Perpich:

December 28, 1990

Over time, these annual, year-end recitals have taken on a synoptic dimension in which we try to encapsulate or freeze in time a 12-day event where 1.5 million people compete, learn, interact and enjoy themselves.

It is further my responsibility, under law, to report to you the financial health of the society, and to document for the public record the policy and business decisions made by our board and professional staff.

The latter has been undertaken within the scope of this report. However, I find it increasingly difficult to reduce the immediate past fair or even the immediate past year to a simple snapshot in time. Continuity and transitional linkage have become increasingly important to our business cycle and to our sense of social awareness. In other words, our presentations of last year, the year before, and the year before that, must be succinctly analyzed from an audience perspective, as must our impact on the community, the state, the industry and the environment before we shape and fine-tune our presentations, not just for the next season, but for the several years immediately before us.

In last year's report, I offered a quick resume of the 1980s and suggested that a few trends were emerging from that data, including steady, measured growth for the fair, a changing, more mature audience, greater competition for leisure time, as well as larger, global issues.

As a result of this process of self-examination, because more accurate information on social and economic trends is becoming available to us, and because we recognize a clear, statutory obligation to change and to improve our focus, we will initiate two new strategies during the coming year aimed at global issues which have become both local and immediate.

The first initiative will deal with transportation and traffic management questions. Our ultimate goal in this instance is to shift the fair's audience towards public transit and into less congestive park and ride programs.

The second introduction is intended to move both the fair and its audience into a comprehensive recycling effort, one which will provide a tangible and highly visible demonstration of how waste management can be effected in an environmentally responsible and equally productive manner.

A wide range of tactical questions must be addressed before these two programs are formally introduced at the 1991 State Fair. Furthermore, we expect that over time these initiatives will grow and that a gradual metamorphosis will make each more effective and more efficient.

Herein lies the truth (and the challenge) that the Minnesota State Fair must become a more dynamic institution, ready to grow and stretch. It must remain open to new ideas and ready to change at a moment's notice. Meanwhile, it must never lose sight of tradition and its essential dedication to Minnesota agribusiness and the family farm. If these accordant principles remain inviolate as the society shapes its goals and programs for the 21st century, then its audience and allied constituents will continue to be well served.

Change, by its nature, is often uncomfortable. It invariably signals a loss of one kind or another, and not all our losses can be counted as agreeable or pleasant. I must acknowledge, therefore, with genuine regret the impending departure of our longtime friend from Faribault, Mr. Bill Korff. Bill has served the society for nearly two decades, giving generously of his time and leadership. He will leave the board in January having completed a two-year term as its president. The board and staff wish to salute Bill for having raised and reinforced the fair's high standards of public service.

Let me close this report by saying that 1990 was an excellent year for the Minnesota State Fair. Attendance was strong, exceeding 1.5 million visitors for the fifth consecutive year. The society remains financially healthy and continues to direct major investment of resources into both its programs and physical plant.

Sincerely,


Mike Heffron
General Manager

MH/jy

**A TOTAL
OF
1,528,688
PEOPLE
VISITED
THE FAIR
IN 1990—
THE FIFTH
HIGHEST
ATTEN-
DANCE
FIGURE
IN THE
HISTORY
OF THE IN-
STITUTION.**

In a word, the 1990 edition of the Minnesota State Fair was hot. Sizzling Grandstand and free entertainment, weekday bargains and special promotions, food to spark every appetite and a glowing array of competitive and commercial exhibits combined to attract over 1.5 million fair visitors to the 127th edition of the Great Minnesota Get-Together.

Despite the fact that 1990 was one of the warmest fair's on record, with temperatures regularly reaching into the upper 80s, a total of 1,528,688 people visited the fair—the fifth highest attendance figure in the history of the event. The '90 exposition also included one day of record attendance. On Wednesday Aug. 29, a crowd of 117,904

passed through the gates, surpassing the previous record for that day set in 1975.

The sale of outside gate tickets generated \$5 million, representing 45 percent of the fair's operating income.

Gate admission prices were \$4 for adults ages 13-64



(\$3.25 in advance), \$2.50 for children 5-12 and seniors 65 and over (\$2 in advance) and free for kids under 5.

Special promotions during the '90 State Fair included Kids Day, Aug. 23, when persons 12 and under were

admitted free. Also on that day, two free performances by costumed characters from television's popular "The Simpsons" cartoon show were presented in the Grandstand, and discounts were offered on many midway rides and attractions. Senior citizens age 65 and over were given free admission on two Senior Days, Aug. 27 and 30. During special Senior Day recognition ceremonies at the Bandshell on Aug. 30, Irene

DATE	DESIGNATION	WEATHER (temp., rainfall)	ATTENDANCE
Thursday, Aug. 23	Kids Day	76-66, trace	72,998
Friday, Aug. 24	Health and Disability Awareness Day	84-71, trace	101,472
Saturday, Aug. 25	FFA Day	89-66, .03"	161,036
Sunday, Aug. 26	Milk Run Day	85-66, .21"	142,531
Monday, Aug. 27	Seniors Day and 50 Year Award Day	89-72, none	104,980
Tuesday, Aug. 28	Education Day and Volunteer Day	80-64, none	92,234
Wednesday, Aug. 29	Celebrate Minnesota Day	82-58, none	117,904
Thursday, Aug. 30	Seniors Recognition Day	86-58, none	134,130
Friday, Aug. 31	Fine Arts Day	84-67, none	124,491
Saturday, Sept. 1	Agriculture Awareness Day and Scavenger Hunt Day	89-63, none	200,665
Sunday, Sept. 2	4-H Day	83-60, none	179,654
Monday, Sept. 3	Miller Genuine Draft 300 Race Day	83-64, .42"	96,593
		Total Attendance	1,528,688

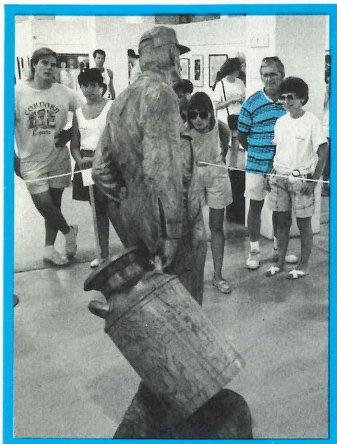
Painschab of Waverly and Lavern (Sy) Sykora of Merrifield were named Minnesota's Outstanding Senior Citizens.

Every weekday of the fair, visitors could take advantage of a special discount coupon booklet featuring savings at 94 attractions and food and merchandise concessions. "Happenings—Weekdays At The Fair" discount booklets were available for \$4.50 (\$4 in advance).

Competitive events at the 1990 State Fair drew over 35,000 entries, with winning entrants taking home a total of \$443,000. Included were categories for livestock, fine arts, school projects, baked goods, fruit, vegetables, crafts, bee and honey products, flowers, butter and cheese.

The fair's renowned

livestock show included contests for cattle, pigs, sheep, dairy goats, llamas, horses, turkeys, rabbits, pigeons and

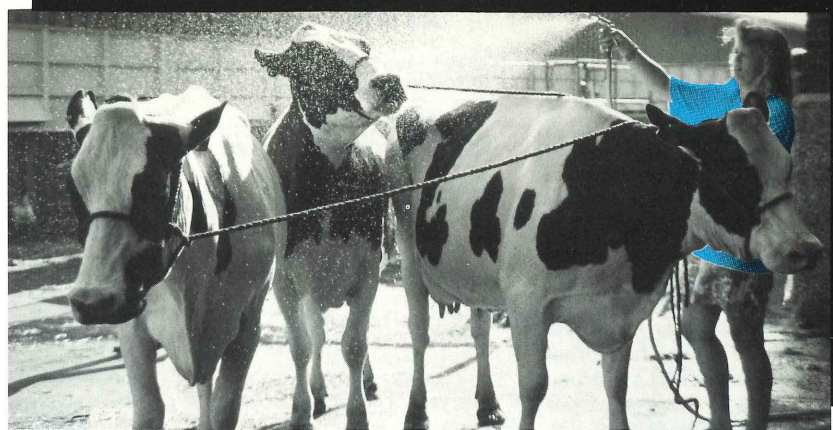


animals.

Other entries were displayed at a variety of

COMPETITIVE EVENTS AT THE 1990 STATE FAIR DREW OVER 35,000 ENTRIES, WITH WINNING ENTRANTS TAKING HOME A TOTAL OF \$443,000.

waterfowl. Animals were housed in the fair's vast livestock complex that includes nine buildings with stabling for 8,000



locations throughout the grounds including the Arts Center, 4-H, Education, Creative Activities and Agriculture and Horticulture buildings, Ramberg Senior Center and Empire Commons.

Other competitions included a five-mile foot race

and the 18th annual amateur talent contest. On Sunday, Aug. 26, over 1,000 runners converged upon the fairgrounds to take part in the sixth

annual Milk Run. First place finishers were James Unruh of Minneapolis (men's division) and Carla Ruth Mattson of White Bear Lake (women's division). The State Fair Amateur Talent Contest was expanded from two to three categories in 1990. This year's top three finishers were Jacqueline Jaquez, a five-year-old vocalist from New Hope (pre-teen division), pianist Angie Trapp from Mounds View (teen division) and the 50-member M.C.C. Gospel Choir from Minneapolis Community College (open division).

FAIR PARKING

To provide parking alternatives and smooth traffic flow, the State Fair utilizes a network of off-grounds parking sites.

In 1990, this park-and-ride network was comprised of 16 lots, all located within four miles of the fairgrounds and offering a total of 10,000 parking places. These sites, combined with parking at the fairgrounds, provided parking for a total of 25,000 vehicles.

Five of the satellite lots provided parking all 12 days of the '90 State Fair. This included one lot reserved for persons with disabilities, serviced by accessible buses from Access Minnesota.

The remaining 11 lots provided parking and bus service on weekends during the fair. Parking in all satellite and fairgrounds parking lots was free. Shuttle bus service cost 50¢ each way. ➡

In 1990, the fair continued

its tradition of presenting power-

house Grandstand acts at an

economical price. As a result, a

total of 137,437 fair visitors

attended paid Grandstand shows

this year. The Beach Boys drew

the largest number of fans, with a

total audience of 28,351 turning out for two

performances on Saturday Sept. 1. Although the

**THE FAIR'S TOP CONCERT
TICKET PRICE WAS \$12.50,
COMPARED TO AN AVERAGE
TICKET PRICE OF
\$21.96 AT OTHER CON-
CERT VENUES ACROSS THE
NATION.**

Beach Boys shows held the top ticket price of

\$12.50, that cost remained well below the national

average for comparable concerts during the same

time period as the fair. According to information

published in Billboard

Magazine, the average

price for 1990 summer

concerts was \$21.96.

Income from the sale

of tickets to all Grandstand

events totaled \$1.5 million,

representing 14 percent of

the fair's gross operating

income. The lineup of 12



concerts cost \$1.4 million in entertainers fees and

production costs which was offset by \$1.4 million in

ticket sales.

An additional \$115,000 in income was generated

by ticket sales for the Miller Genuine Draft 300 on

Labor Day. A total of 13,230 auto race fans were on

hand as Butch Miller drove his Chevy Lumina to

victory in the ASA-sanctioned event. Miller not only

beat an impressive group of drivers, including Mike

Eddy, Harold Fair, Bob Senneker and NASCAR's Dick

Trickle, but he also came within 13 seconds of beating

the track record, set in 1978.

1990 Grandstand Events

Date	Attraction	Ticket price	Attendance
Aug. 23	The Simpsons	Free	n/a
Aug. 23	Barbara Mandrell and T. G. Sheppard	\$11 & \$6	6,290
Aug. 24	Richard Marx and Wilson Phillips	\$12 & \$7	11,859
Aug. 25	Bill Cosby	\$12 & \$7	13,240
Aug. 26	Randy Travis and Alan Jackson	\$12 & \$7	15,431
Aug. 27	Bonnie Raitt with Charles Brown and the Jeff Healey Band	\$12 & \$7	16,607
Aug. 28	The Oak Ridge Boys and Patty Loveless	\$11 & \$6	7,578
Aug. 29	Bob Dylan and Wire Train	\$12 & \$7	14,777
Aug. 30	Roger Whittaker	\$11 & \$6	6,697
Aug. 31	George Strait and Billy Joe Royal	\$11 & \$6	8,393
Sept. 1	The Beach Boys and The Marshall Tucker Band (two shows)	\$12.50 & \$7.50	28,351
Sept. 2	John Denver	\$11 & \$6	8,214
Sept. 3	Miller Genuine Draft 300	\$10 & \$7	13,230

HISTORY

The commencement of the Minnesota State Fair pre-dates statehood. Three territorial fairs were held annually beginning in 1855. In 1859, one year after Minnesota joined the union, the first State Fair was held. That first presentation was a subdued affair due to an economic downturn throughout the country. Yet, it laid the foundation for what the State Fair has grown to be—an opportunity for the citizens of the entire region to sample the best of what our state has to offer in agriculture, entertainment, technology and education.

Since 1859, the fair has been canceled only five times. In 1861 and 1862, the Civil War and Dakota Indian conflict prevented the event from taking place. It was also canceled in 1893 due to scheduling conflicts with the World's Columbian Exposition in Chicago. In 1945, war-time gasoline and supply shortages led to its suspension, while in 1946, a polio epidemic forced its cancellation.

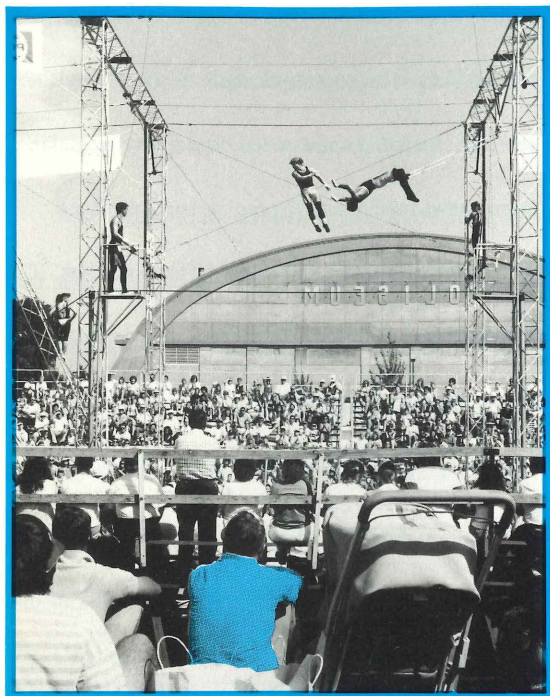
During the fair's early years, the site of the exposition changed annually with stops in Minneapolis, St. Paul, Red Wing, Winona and Owatonna. Throughout this time, civic groups from both St. Paul and Minneapolis competed relentlessly to provide a permanent home for the fair in their respective cities.

The rivalry ended in 1885 when the Ramsey County Board donated their 210-acre poor farm to the State Agricultural Society, the governing body of the State Fair.

Historically, the fair has been extended as a response to growing attendance. The earliest fairs generally ran three days, but by 1939, the length of the exposition had grown to 10 days. In 1975, the fair was extended to its current length of 12 days, ending Labor Day.

The most important change in the State Fair has been in its attraction to visitors. The character of early fairs was dominated by agricultural exhibits and competitions, reflecting its original purpose of encouraging farming in the state. Over the years, however, the scope of activities has broadened to appeal to farmers and city dwellers alike, while maintaining agriculture as the focal point. ☐

The fair spent \$653,000 to produce its substantial free entertainment program. Over 700 free shows were offered during the '90 fair at locations throughout the fairgrounds. Included was a special performance by the Amazing Kreskin, who performed for the second straight year at the fair's opening ceremony, conducted at the



Miller High Life Bandshell. As part of his performance, the mentalist agreed to let his performance fee be hidden somewhere on the Bandshell premises under the condition that if he failed to find his paycheck, he would forfeit his fee. After the check was hidden, Kreskin astounded the audience by heading straight for a man seated in the audience. He asked the man to remove his shoe and found the check, tucked neatly inside.

Another free attraction which regularly drew standing-room-only crowds was Pepsi's Air-Robics. This high-energy combination of aerial and ground acrobatics was presented four times daily at the Amphitheater.

Audience response was so enthusiastic that between-show rehearsals often drew crowds of over 1,000.

Wildman piano virtuoso Jason D. Williams regularly turned up the heat with his free performances at the Bandshell. In addition to delivering some terrific boogie woogie rock'n'roll, the flashy showman played the piano with his feet, elbows and back pockets. When the mood struck him, Williams also called members of the audience up on stage to sing and dance along, sang from the crowd, danced standing on top of a step ladder, performed clothed in a sheet and even stood on his piano and played. The enthusiastic

THE HIGH-FLYING ACROBATICS OF AIR-ROBICS WERE JUST PART OF THE FAIR'S FREE ENTERTAINMENT PACKAGE. OVER 60 FREE SHOWS WERE PRESENTED EACH DAY OF THE '90 EXPOSITION.

FREE STAGE ENTERTAINMENT

MILLER HIGH LIFE BANDSHELL

Aug. 23 - Sept. 3:

Williams & Ree
Ray Komischke's
State Fair Orchestra

Aug. 23 - 28:

Jason D. Williams
Mason Dixon

Aug. 29 - Sept. 3:

Lionel Cartwright
The Association

Special performances:

Aug. 23:

The Amazing Kreskin

Aug. 29:

Michael Johnson

CHILDREN'S THEATER

Aug. 23 - Sept. 3:

The Teddy Bear Band
David Cohan
National Karate Kids

Aug. 23 - 28:

Willy Wonka

Aug. 29 - Sept. 3:

David Hamilton

RAMBERG SENIOR CENTER

featuring a variety of entertainment, including:

Vic Hyde
Paul & Archie
The LeRoy Karg Band
The Rhythm Kings
The Kelly Family

BUDWEISER STAGE IN BALDWIN PARK

Aug. 23 - Sept. 2

Trial By Jury

Aug. 23 - 28:

High Noon
The Fantastic Convertibles
Billy McLaughlin

Aug. 29 - Sept. 3:

Midnight Rider
The Rockin' Hollywoods
Jax Street

LEINENKUGEL'S LEINIE LODGE IN THE BAZAAR

Aug. 23 - Sept. 2:

The Comedy Hour

Aug. 23 - 28:

The Jack D'Johns
78 R.P.M.

Aug. 29 - Sept. 3:

5th Avenue
The Crickets

HERITAGE SQUARE

Aug. 23 - 28:

Riders In The Sky
Wild Rose
Live & Kickin'

Aug. 29 - Sept. 3:

Bonnie Nelson
& The Stateside Express
The Chmielewski
Fun Time Show
Barbary Coast Banjo Brass



**THE FAIR
OFFERS VISI-
TORS THE
ULTIMATE
SHOPPING
EXPERIENCE
— WITH OVER
1,300 COM-
MERCIAL
EXHIBITS,
INCLUDING
OVER 350
FOOD VEN-
DORS.**

audiences regularly rewarded Williams with standing ovations.

Equally impressive, though more subdued, were the Seasoned Eye II and III art shows, presented by Modern Maturity Magazine. This eclectic collection of 50 photographs and 40 paintings by artists over age 50 was on display daily in Farmtech Plaza. Admission was free.

Each night except Labor Day, the fair's evening mall parade animated the fairgrounds with clowns, floats,

animals and music. Included as part of the parade was the fair's high school marching band contest. Top honors were awarded to Anoka Senior High (class AA) and Waseca High School (class A).

Over 1,300 commercial exhibits utilizing 4.3 million square feet of indoor and outdoor exhibit space offered visitors an enormous marketplace of goods and services. Included were varied displays by manufacturers, news media, artisans, politicians, retail and educational exhibitors and over 350 food vendors. The latter category included 12 new food concessions, whose offerings ranged from such exotic taste treats as Russian borscht and Austrian strudel to the worldly peanut butter and jelly sandwich.

The rental of space to concessionaires and exhibitors earned \$1.8 million— 16 percent of the fair's gross income for the year. In most cases, vendors selling or displaying goods at the fair paid rental fees

STATE FAIR BUILDINGS ARE A STUDY IN ARCHITECTURE

Among North America's scores of exposition facilities, the Minnesota State Fairgrounds is widely recognized as one of the finest. The 314-acre plant is a well-kept blend of old and new, a dreamland of architecture and history, highlighted by elaborate horticultural marvels.

Since 1885, the State Fair has occupied a site on the northwestern edge of St. Paul, midway between the downtown districts of St. Paul and Minneapolis. From its earliest days at the site, State Fair architecture reflected styles inspired by the great world's fairs of the late 1800s and early 1900s. By 1909, the State Fairgrounds looked like a combination of all the best world's fairs to that date.

Three buildings from those early days—the Arts Center, Progress Center and Grandstand—remain, providing a magnificent study in Greco-Roman architecture.

During the '30s and '40s, art deco architecture was added to the State Fairgrounds' mix of

styles. Art deco, characterized by broad white facades, cubed towers and colored lights, is evident in the Horse Barn, Sheep Barn, Grandstand Ramp, 4-H Building and Agriculture and Horticulture Building.

A later stage of modernistic design, utilizing curved, flowing shapes, is evident at the Food Building, built in 1949, and the Coliseum, constructed in 1951.

Post World War II architecture, characterized by boxy-shaped concrete and metal paneling, is evident at the Merchandise Mart, Ramberg Senior Center, Home Improvement Building, Education Building, Creative Activities Building and Sentinel Building.

Within this grand complex of ever-evolving architectural styles, an element of Minnesota's early days remains. Two authentic log cabins, built and used by settlers in Minnesota's Marshall County, were transported to the State Fairgrounds in 1975 and are now a major attraction at Heritage Square, the fair's early American theme area. In addition, the Minnesota Territorial Pioneers utilize a log cabin built in the '30s for their exhibit, and the state's Department of Natural Re-



sources maintains a huge display in the largest log cabin ever built on the fairgrounds. The DNR cabin was built in 1934.

The landscape setting for these architectural treasures is a colorful blend of horticultural splendor reminiscent of the early 1900s. In 1908, an ambitious program was undertaken to fill the fairgrounds with dazzling formal gardens, stately stands of cannas, rock gardens and plant sculptures. All of these elements remain, highlighted by a floral replica of the Liberty Bell, first constructed in 1921, and the Gates Ajar, built in 1934. □

based on the size of their exhibit space. Beer vendors and most of the attractions that required admission tickets paid rental fees representing a percentage of their sales.

Percentage and footage fees paid to the fair by Royal American Shows carnival totaled \$905,000, representing eight percent of the fair's income for the year.

Off-season special events held throughout the year at the State Fairgrounds earned \$1 million in gross revenue for the fair— nine percent of the year's total income. The State Fair's off-season events schedule included a variety of horse and livestock shows, retail sales, antique and collector shows, auto exhibitions and athletic events.

ORGANIZATION

The Minnesota State Fair is governed by the Minnesota State Agricultural Society, a public corporation and financially self-sustaining agency of



The fair's board of managers is pictured, first row, left to right: Eileen Roehlke, Rogers, third district manager; Bert Lund, St. Paul, fourth district vice president; Willis Lilliquist, Kennedy, president; Richard Keenan, Minneapolis, fifth district vice president and Clarice Schmidt, Sabin, ninth district manager. Back row, left to right: Howard Morris, Cokato, sixth district manager; Don Simons, Grand Rapids, eighth district manager; Martin Annexstad, St. Peter, second district manager; Vern Prokosch, Bird Island, seventh district manager; and Howard Recknor, Hartland, first district manager.

the state. The society is charged exclusively with the operation of the exposition and maintenance of the

fairgrounds. The society has nine regional districts, and membership is made up of representatives from each district's county fairs and agribusiness groups.

Policy for the administration of the State Fair is set by the society's 10-member board of managers—one representative from each district and a president, who serves at-large. All positions on the board of managers are filled through elections conducted by society delegates at an annual business convention, conducted each January. The board president serves a one-year term, the two vice presidents serve two-year terms and the seven managers serve terms of three years.

THE MINNESOTA STATE FAIR IS A FINANCIALLY SELF-SUSTAINING AGENCY OF THE STATE, UTILIZING NO FEDERAL, STATE OR LOCAL APPROPRIATIONS.

Top-drawing 1990 off-season events

Date	Event	Attendance
Oct. 17-28	Berman's Leather Warehouse Sale	50,000
May 18-20	Country Folk Art Show & Sale	25,000
Sept. 21-23	Country Folk Art Show & Sale	25,000
April 28-29	Minnesota Horse Expo '90	20,000
May 4-6	Second Annual Midwest Pet Fair	20,000
June 22-24	Minnesota Street Rod Association Back to the 50s Weekend	20,000
July 6-11	Olympic Festival Equestrian Event	20,000
March 9-11	Minnesota Deer Classic	18,000
April 21-22	Antique Spectacular & Flea Market	13,000
April 27-29	Great Minnesota Canoe Event	12,000
April 27-29	Star of the North Antique Show	12,000

FAIR-TIME SUPERINTENDENTS

Admissions

Lyle Anderson, St. Paul

Bee Culture

Winnie Johnson, Elk River

Care and Assistance

Wallace Wolff, Duluth

Cattle

Ray Arthaud, White Bear Lake

Christmas Trees

Greg Ustruck, Vadnais Heights

Creative Activities

Evelyn Hagen, Minneapolis

Dairy Products

Cliff Markuson, Hillman

Education

Jim Brown, Prior Lake

Farm Crops

Duane Smith, Minneapolis

FFA

Paul Day, Northfield

Fine Arts

Pat Kennedy Crump,

Wayzata

Fire Marshall

Frank Junghans, St. Paul

Flowers

Martha Carnes, West St. Paul

Forage

Dan Elmer, Minneapolis

4-H

Juanita Reed-Boniface,

St. Paul

Fruits

Louis Quast, Jr.,

St. Louis Park

Goats

Kevin LeVoor, Maple Lake

Grandstand Production

Neil Larson, Blue Earth

Horses

Robert Peterson, St. Paul

Llamas

Verne Greenlee, Minneapolis

Meats

Ed Butler, Rochester

Midway Ticket Takers

Marty Rossini, Stillwater

Natural Resources

Roberta Smith, St. Paul

Parking

Ron Vannelli, St. Paul

Poultry

Harold Thomforde, Crookston

Public Safety

Art Blakey, St. Paul

Sanitation

Scot Ribar, Eagan

Senior Citizens

Marge Krueger, St. Paul

Sheep

Bill Schulke, Bemidji

Swine

Jerry Hawton, New Brighton

Ticket Audit

Dick Reinhardt, Owatonna

Vegetables

Curt Klint, Coon Rapids

Youth Camp

Darrell Vanyo,

West Fargo, ND

Willis Lilliquist of

Kennedy was elected

president of the board

during the society's 1991

annual meeting. Prior to his

election as president,

Lilliquist represented the

ninth district on the board

of managers. He has served

on the State Fair board

since 1977, and has been active with the Kittson

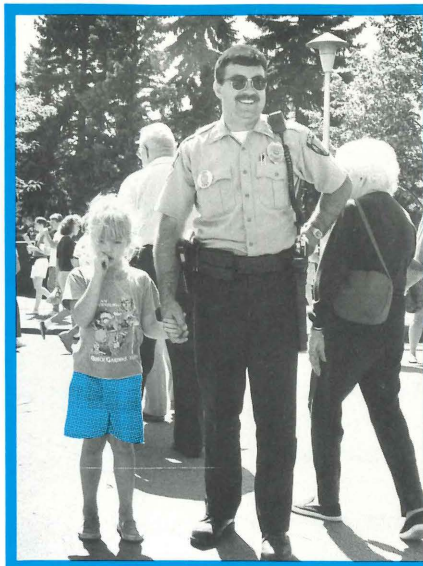
County Fair for over 40 years. Lilliquist is a retired

farm implement dealer.

The board's policies as well as day-to-day operations are implemented through the State Fair's executive vice president, Mike Heffron of St. Paul. Heffron operates through a year-round staff of nearly 50 people. Full-time employees are joined by a seasonal staff that grows to over 2,300 by fair-time.

The full-time staff handles such duties as building, grounds and vehicle maintenance along with security services and off-season special events. Administrative functions include competitive events, entertainment scheduling, finance, promotion and commercial exhibit space rental.

The State Fair's sizable seasonal staff is largely responsible for the success of the exposition. The variety of activities necessary to the production of the annual exposition are organized into seven



divisions, each headed by a director.

Related activities are further divided within each division into groups of specific responsibilities, and these functions are carried out by fair-time staff. They include parking, admissions, sanitation, police and information services, along with the activities of each of the exposition's competitive departments.

DEMOGRAPHICS

Who attends the Minnesota State Fair? Where do they come from, and what do they like or dislike about the exposition? A variety of surveys conducted during the latter half of the '80s helped draw a clear picture of the State Fair's audience and provide answers to these questions. The surveys dealt with demograph-



ics, the economic impact of the exposition, entertainment and the comments of neighbors of the State Fairgrounds.

According to the data, the State

Fair has a solid following in all age groups, with particularly strong representation among 21- to 39-year-

olds (41 percent) and 40- to 59-year-olds (31 percent).

Most are married, and half work at white collar jobs.

Over 70 percent of fair visitors live in the Twin Cities and its suburbs, and one out of five are from out-state

Minnesota. The

State Fair also

has a strong

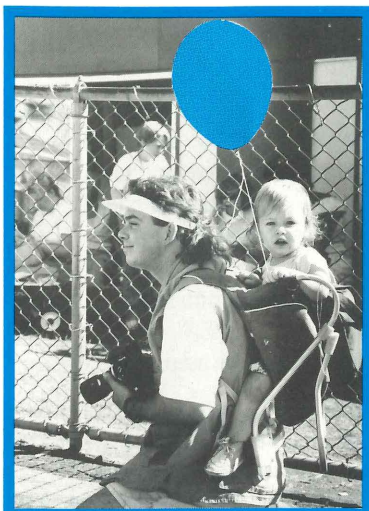
following in

western Wiscon-

sin, northern

Iowa and the

Dakotas.



What do fair visitors like best about the State Fair? Twenty-seven percent said the food, and 12 percent said the animals. Another 10 percent said they like all of the competitive exhibits, and nine percent said they liked everything about the fair. When asked what problems they encountered, the largest response of fair visitors was



"no problems."

On the whole, the State Fair's audience is very pleased with the exposition. Ninety-four percent rated the exposition as "good" to "excellent." Six percent said the fair was "fair" and a single respondent rated the fair

as "poor."

Two of the studies conducted were mail-in surveys, and respondents were generous in



offering a variety of insights and opinions through write-in comments. The State Fair's scheduling of world-famous entertainers for the Grandstand generated the greatest number of comments, including applause for past performers and suggestions for future concerts. The State Fair's expansive free entertainment also drew extensive responses, and they were unanimously positive.

MINNESOTA STATE FAIR DEMOGRAPHIC PROFILE OF VISITORS

Age:	20 and under	12 %
	21 through 39	41 %
	40 through 59	31 %
	60 through 70	13 %
	Over 70	3 %
Marital Status:	Married	71 %
	Single	29 %
Residence:	Cities and suburbs	71 %
	Small towns	19 %
	Rural	10 %
Education:	College degree	30 %
	Some college	32 %
	High school graduate	23 %
Employment:	White collar	50 %
	Blue collar	18 %
	Retired	12 %
	Students	9 %
	Homemakers	6 %
	Farming	4 %
Family income:	\$20,000- \$24,999	10 %
	\$25,000- \$34,999	19 %
	Over \$35,000	37 %

SPONSORSHIPS

One way companies reach the State Fair's diverse audience is through sponsorship of State Fair attractions and events. The State Fair's promotional partners in 1990 included American Dairy Association of Minnesota, Anheuser-Busch Inc., Bullseye Barbeque, Coca Cola, The Farmer Magazine, M. A. Gedney Company, KS95 Radio, Jacob Leinenkugel Brewing Company, Miller Brewing Company, Pepsi-Cola, Share Senior Care, 3M and WCCO Radio.



STATE OF MINNESOTA

OFFICE OF THE LEGISLATIVE AUDITOR

VETERANS SERVICE BUILDING, ST. PAUL, MN 55155 • 612/296-4708

JAMES R. NOBLES, LEGISLATIVE AUDITOR

Independent Auditor's Report

Mr. William Korff, President
Board of Managers
State Agricultural Society

Mr. Michael D. Heffron
Secretary-General Manager
State Agricultural Society

We have audited the accompanying balance sheets of the State Agricultural Society as of October 31, 1990 and 1989, and the related statements of income, retained earnings, and cash flows for the years then ended as presented on pages 13 to 17. These financial statements are the responsibility of the Society's management. Our responsibility is to express an opinion on these financial statements based on our audits.

We conducted our audits in accordance with generally accepted government auditing standards. Those standards require that we plan and perform the audit to obtain reasonable assurance about whether the financial statements are free from material misstatement. An audit includes examining, on a test basis, evidence supporting the amounts and disclosures in the financial statements. An audit also includes assessing the accounting principles used and significant estimates made by management, as well as evaluating the overall financial statement presentation. We believe that our audits provide a reasonable basis for our opinion.

In our opinion, the financial statements referred to above present fairly, in all material respects, the financial position of the State Agricultural Society as of October 31, 1990 and 1989, and the result of its operations and its cash flows for the years then ended in conformity with generally accepted accounting principles.

Our examination was made for the purposes of forming an opinion in the basic financial statements as a whole. The supplemental financial information included on pages 18 to 22, which is the responsibility of the Society's management, is presented for purposes of additional analysis and is not a required part of the basic financial statements. Such information has been subjected to the auditing procedures applied in the examination of the basic financial statements and in our opinion, is fairly stated in all material respects in relation to the basic financial statements taken as a whole.

James R. Nobles
Legislative Auditor

John Asmussen, CPA
Deputy Legislative Auditor

January 11, 1991

BALANCE SHEET

For the years ended October 31	1990	1989
ASSETS		
Current Assets:		
Cash and cash equivalents	\$ 1,813,030	\$ 1,661,699
Accounts receivable (note 2)	105,661	251,647
Prepaid insurance	62,250	62,782
Prepaid expenses	8,284	3,909
Total current assets	1,989,225	1,980,037
Property, structures and equipment (note 3)	12,693,962	12,246,817
Total assets	\$ 14,683,187	\$ 14,226,854
LIABILITIES & EQUITY		
Current liabilities:		
Accounts payable	\$ 439,114	\$ 259,487
Accrued salaries	56,812	43,682
Accrued interest payable	3,088	4,932
Compensated absences (note 4)	231,121	205,409
Deferred income (note 6)	208,023	159,548
Current portion of long-term liabilities (note 7)	126,236	132,305
Total current liabilities	1,064,394	805,363
Long-term liabilities:		
Note, contract and lease payable (less current portion) (note 7)	621,859	748,238
Equity:		
Designated for building fund (note 11)	516,870	189,083
Unreserved retained earnings	12,480,064	12,484,170
Total liabilities & equity	\$ 14,683,187	\$ 14,226,854

The accompanying notes are an integral part of the financial statements.

INCOME AND EXPENSES

For the years ended October 31	1990	1989
Income:		
Ticket sales	\$ 6,716,981	\$ 6,361,765
Departmental	2,989,790	2,864,346
Other	1,452,349	1,944,719
Total income	11,159,120	11,170,830
Expenses:		
Administrative	1,095,478	1,123,129
Departmental	5,569,051	5,161,968
Premiums	442,941	463,192
Other	1,097,980	1,102,466
Maintenance	1,859,142	1,718,387
Depreciation	770,846	697,919
Total expenses	10,835,438	10,267,061
Net income	\$ 323,682	\$ 903,769

RETAINED EARNINGS

For the years ended October 31	1990	1989
Retained earnings at beginning of year	\$ 12,673,254	\$ 11,769,485
Add:		
Net income	323,682	903,769
Retained earnings at end of year	\$ 12,996,936	\$ 12,673,254
Retained for working capital and improvements	\$ 534,199	\$ 1,117,897
Designated for building fund (note 11)	516,870	189,083
Book value of fixed assets		
net of debt obligations	11,945,867	11,366,274
	\$ 12,996,936	\$ 12,673,254

The accompanying notes are an integral part of the financial statements.

STATEMENT OF CASH FLOWS

For the years ended October 31	1990	1989
Cash flow from operating activities:		
Net income for the year	\$ 323,682	\$ 903,769
Add: Depreciation expense	770,846	697,919
Changes in working capital:		
Current assets—(increase) decrease:		
Accounts receivable	145,986	(135,469)
Interest receivable	-0-	19,101
Prepays	(3,843)	(3,440)
Current liabilities—increase (decrease):		
Accounts payable	179,627	893
Salaries payable	13,130	6,282
Compensated absences	25,712	17,624
Interest payable	(1,844)	(1,750)
Deferred income	48,475	10,865
Loss on sale of structure	129	-0-
Net cash provided by operations	1,501,900	1,515,794
Cash flow from investing activities:		
Proceeds from sales of investments	-0-	492,063
Proceeds from sale of structure	4,000	-0-
Additions to fixed assets:		
Electrical system	(32,979)	(76,033)
Fence and guard rail	(59,679)	(13,306)
Land improvements	(59,710)	(111,894)
Personal property	(217,229)	(42,988)
Sewer system	-0-	(5,975)
Structures	(830,820)	(1,552,895)
Water distribution system	(21,704)	(732)
Net cash used in investing activities	(1,218,121)	(1,311,760)
Cash flow from financing activities:		
Increase (decrease)		
Note payable	(73,378)	(36,689)
Contract for deed	(33,532)	(31,835)
Lease payable.	(25,538)	(24,701)
Net cash used for financing	(132,448)	(93,225)
Increase (decrease) in cash	151,331	110,809
Cash and cash equivalents beginning of year	1,661,699	1,550,890
Cash and cash equivalents end of year	\$ 1,813,030	\$ 1,661,699

The accompanying notes are an integral part of the financial statements.

FOOTNOTES

NOTE 1: SUMMARY OF ACCOUNTING POLICIES

The Minnesota State Agricultural Society is charged with the conduct of the annual State Fair and management of the State Fairgrounds, as outlined by Chapter 37 of Minnesota Statutes. Financial information is formulated and presented according to non-profit accounting principles. Assets and liabilities and income and expenses are recognized on the accrual basis of accounting. Fixed assets are stated at cost less accumulated depreciation. Donated materials and services are valued at their estimated fair value at the date they are donated. Expenditures for maintenance and repairs are charged to expense as incurred. Costs of newly acquired items, including renewals and replacements which add to the original value or materially extend the useful lives of the related assets, are capitalized and written off as depreciation charges over their estimated useful lives. Costs of assets and the related accumulated depreciation are eliminated from the accounts in the year of sale or retirement. Depreciation is computed on the straight-line method over the estimated useful lives of the assets. The provision for depreciation is calculated based on the following lives:

Personal property	Five to 10 years
Structures and improvements	20 to 50 years
Electrical system	30 years
Fence and guard rails	20 years
Gas distribution system	30 years
Sewer system	20 years
Sidewalks	20 years
Land improvements	20 years
Water distribution system	20 to 30 years

Note 2: ACCOUNTS RECEIVABLE

	1990	1989
Gross accounts receivable	\$ 109,395	\$ 293,645
Less allowance for doubtful accounts	3,734	41,998
Net Accounts Receivable	\$ 105,661	\$ 251,647

In accordance with Minnesota Statutes, accounts receivable which are considered uncollectible have been reported to the Attorney General for consideration including submission as necessary to the Executive Council of the State of Minnesota. The Attorney General's office approved cancellation of \$37,232 in uncollectible debts reported in 1990.

NOTE 3: FIXED ASSETS—LAND, STRUCTURES, UTILITIES & EQUIPMENT

	1990	1989
Land (note 9)	\$ 2,013,778	\$ 2,013,778
Land improvements	1,147,047	1,087,337
Structures and improvements	19,567,342	18,896,641
Electrical plant	1,853,428	1,820,449
Fence and guard rails	329,259	269,580
Gas distribution system	88,845	88,845
Sewer system	437,768	437,768
Water distribution system	495,939	474,235
Personal property	706,969	572,536
Total	\$26,640,375	\$25,661,169
Less accumulated depreciation	13,946,413	13,414,352
Net book value	\$12,693,962	\$12,246,817

NOTE 4: COMPENSATED ABSENCES

	1990	1989
Accrued vacation	\$ 107,642	\$ 101,953
Vested sick leave	123,479	103,456
Total Compensated Absences	\$ 231,121	\$ 205,409

NOTE 5: MINNESOTA STATE RETIREMENT SYSTEM

All Society full-time employees must participate in the State Employees Retirement Fund which is administered by the Minnesota State Retirement System (MSRS). Contributions are made to the fund by employees and the Society based on a percentage of gross salary. The Society matches employee contributions and also pays an additional amount to retire prior years unfunded liabilities. Full funding is required by the year 2009. Current rates are 4.15 percent for employees and 4.29 percent for the Society for a total of 8.44 percent. Total Society contributions were \$56,185 for 1989 and \$65,053 in 1990.

NOTE 6: DEFERRED INCOME

	1990	1989
Unearned winter storage income	\$ 147,860	\$ 139,226
Off-season show deposits	20,500	3,725
Advance Coliseum ice rental	39,663	16,597
Total Deferred Income	\$ 208,023	\$ 159,548

NOTE 7: CURRENT AND LONG-TERM LIABILITY ALLOCATIONS

	1990		1989	
	Current	Long-term	Current	Long-term
Contract for deed (note 8)	\$ 35,917	\$ 20,224	\$ 33,389	\$ 56,284
Note payable (note 9)	73,378	587,021	73,378	660,399
Lease payable (note 10)	16,941	14,614	25,538	31,555
	\$ 126,236	\$ 621,859	\$ 132,305	\$ 748,238
Net increase (decrease)	\$(6,069)	\$(126,379)		

NOTE 8: CONTRACT FOR DEED PAYABLE

The contract is dated Nov. 30, 1979, and the rate of interest is six percent. The contract is to be paid in not more than 18 annual installments, each of which shall be equal to or exceed the greater of the following amounts: the interest due on the unpaid balance, or 33 1/3 percent of the gross annual receipts generated by University of Minnesota parking on fairgrounds lots per existing agreement.

NOTE 9: NOTE PAYABLE

The note is dated Sept. 1, 1989, and is payable to the North Star State Bank, Roseville, Minnesota. The note represents financing for the purchase of 7.14 acres of improved land adjacent to the fairgrounds. The rate of interest is 73 percent of the prime lending rate and is payable monthly. Two principal payments totaling \$73,378 are required annually based on a 10-year amortization. Payment must be made in a priority manner to any annual expenditures.

NOTE 10: LEASE PAYABLE

Leases meet the criteria of a capital lease as defined by Statement of Financial Accounting Standards #13, "Accounting For Leases," which defines a capital lease generally as one which transfers benefits and risks of ownership to the lessee. The leases payable represent four leases for financing two copiers, a computer system and a phone system. The equipment was capitalized and the lease payable obligations were computed using the present values of the total lease payments.

The following is an analysis of the property under capital leases.

	Asset Balances at October 31	
	1990	1989
Class of property:		
Office Equipment	\$ 74,748	\$ 112,958
Less: Accumulated amortization	44,838	49,044
	\$ 29,910	\$ 63,914

The following is a schedule by years of future minimum lease payments under capital leases together with the present value of the net minimum lease payments as of October 31, 1990:

Year ending October 31:

1991	19,995
1992	10,927
1993	5,205
Total minimum lease payments	36,127
Less: Amount representing interest (1)	4,572
Present value of net minimum lease payments	\$ 31,555

(1) Amount necessary to reduce net minimum lease payment to present value calculated at the Company's incremental borrowing rate at the inception of the leases.

NOTE 11: DESIGNATED FUNDS

This represents designated funds as set forth by Minnesota Statutes, Section 297A.25.

SUPPORTING SCHEDULE - INCOME AND EXPENSES

For the years ended October 31	1990	1989
INCOME		
Ticket sales:		
Coliseum	\$ 64,875	\$ 85,231
Grandstand	1,510,878	1,186,710
Outside gate	5,031,381	5,061,517
Raft ride	80,015	-0-
Trackless train	29,832	28,307
Total ticket sales	6,716,981	6,361,765
Departmental:		
Agriculture-Horticulture	1,235	1,016
Box office	135,373	102,974
Cattle	10,820	11,019
Entertainment	38,081	37,610
Forage	16,683	37,267
FFA	2,752	3,193
Goats	1,024	1,038
Horses	81,068	74,302
Llamas	840	730
Poultry	2,312	2,040
Public safety	11,883	10,464
Sheep	2,942	3,411
Space rental	2,684,011	2,578,422
Swine	766	860
Total departmental	2,989,790	2,864,346
Other:		
Campground	49,590	50,749
Interest	78,126	77,805
Miscellaneous	55,485	242,710
Off-season activity	1,037,166	1,284,633
Sale of bulk milk	14,021	14,604
Sale of market animals	74,205	102,410
Sale of materials	3,341	4,087
Sponsorship	140,415	167,721
Total other	1,452,349	1,944,719
Total income	\$ 11,159,120	\$ 11,170,830

EXPENSES

For the years ended October 31

1990**1989****Administrative:**

Annual meeting	\$ 3,522	\$ 2,612
Bad debt	676	946
Board honorarium	10,400	10,500
Bonds and insurance	149,815	151,480
Computers	30,833	9,218
Dues and subscriptions	13,916	8,907
Legal services	8,080	8,953
Legislative audit	20,570	19,486
Mailing service	14,886	13,975
Medical insurance	115,075	116,029
Postage	76,958	73,944
Printing and supplies	51,841	48,522
Records and archives	-0-	10,000
Retirement fund	65,053	56,185
Salaries	266,809	336,511
Social security	131,343	119,207
Staff training	8,353	5,119
Telephone	33,881	43,174
Travel expense	44,855	37,637
Unemployment compensation	6,145	3,335
Workers compensation	42,467	47,389

Total administrative**1,095,478****1,123,129****Departmental:**

Admissions	115,517	114,712
Advertising	530,230	559,646
Bee culture	6,447	6,219
Box office	161,971	135,640
Campground	20,894	18,482
Care and assistance	2,044	1,975
Cattle	35,599	35,916
Christmas trees	2,510	2,564
Competitive exhibits	79,918	80,258
Creative activities	40,978	40,448
Dairy products	1,229	982
Education	20,797	21,705
Farm crops	9,158	9,258
Finance	155,974	129,662
Fine arts	21,457	18,762
Flower and agriculture shows	28,304	28,110
Flowers	5,788	5,885
Forage	34,282	35,487
4-H Club	119,201	108,897
Free entertainment	653,437	602,149
Fruit	6,188	6,205
FFA	29,447	28,200

EXPENSES (CONTINUED)

For the years ended October 31	1990	1989
Gate tickets	103,695	101,841
Goats	3,995	3,399
Grandstand	1,453,929	1,433,402
Greenhouse	128,147	108,452
Guest and staff services	124,521	-0-
Horses and rodeo	125,321	112,890
Llamas	2,487	2,529
Meats	4,442	4,007
Media and public relations	244,545	212,078
Park and ride	44,188	34,636
Parking	97,944	113,085
Poultry	10,015	10,418
Public safety	309,928	268,499
Sanitation	420,236	377,625
Senior citizens	27,280	15,949
Sheep	7,068	6,894
Space rental	342,032	329,912
Swine	8,416	7,789
Ticket audit	5,043	4,594
Vegetables	4,413	4,270
Youth Camp	20,036	18,537
Total departmental	5,569,051	5,161,968
Premiums:		
Bee culture	2,792	2,571
Cattle	72,615	73,321
Christmas trees	1,771	1,666
Creative activities	9,540	9,064
Dairy products	605	600
Education	9,614	9,798
Farm crops	13,211	9,509
Fine arts	6,200	6,000
Flowers	2,234	2,144
4-H Club	64,656	64,531
Fruit	1,380	1,345
FFA	33,554	33,565
Goats	7,458	7,556
Horses	66,728	62,202
Llamas	2,465	2,710
Poultry	10,422	10,438
Sale of bulk milk	13,975	14,419
Sale of market animals	74,186	102,605
Sheep	20,378	22,216
Swine	20,480	18,204
Talent contest	6,035	5,850
Vegetables	2,642	2,879
Total premiums	442,941	463,193

EXPENSES (CONTINUED)

For the years ended October 31	1990	1989
Other:		
Architectural and engineering	18,700	9,879
Fire and police service	93,847	88,909
Fuel, oil and gasoline	27,347	25,128
Institutional tickets	57,932	51,745
Interest	61,446	74,305
Miscellaneous	23,491	30,898
Off-season activity	514,987	571,939
Property and casualty loss	2,463	4,934
Property tax	5,213	5,350
Signs	17,563	10,930
Utilities	154,271	136,779
Veterinarian service	28,675	27,425
Water and sewer	92,045	64,245
Total other	1,097,980	1,102,466
Maintenance:		
Electric plant	80,039	110,814
Fence and fixtures	33,730	14,883
Gas system	208	1,473
General	449,343	427,644
Grading, sod, trees	39,810	35,756
Personal property	134,460	129,161
Service	21,028	-0-
Set-up and take-down	470,504	439,573
Sewer system	19,055	17,330
Storm damage	1,617	27
Streets and sidewalks	97,523	43,111
Structures	301,072	296,288
Supplies	41,564	36,871
Vehicles	91,335	88,747
Watchmen	61,155	56,907
Water system	16,699	19,802
Total maintenance	1,859,142	1,718,387
Depreciation:		
Electric plant	50,563	49,859
Fence and fixtures	14,791	9,726
Gas system	686	686
Land improvement	33,832	30,897
Personal property	112,771	82,228
Sewer system	8,149	8,273
Structures	539,313	506,593
Water system	10,741	9,656
Total depreciation	770,846	697,918
Total Expense	\$ 10,835,438	\$ 10,267,061

SUPPORTING SCHEDULE — CASH & CASH EQUIVALENTS

Herewith find the report of cash and cash equivalents of the Minnesota State Agricultural Society for the year ending October 31, 1990:

Beginning balance November 1, 1989

Imprest fund—cash on hand	\$ 500
Checking accounts	654,335
Cash equivalents	1,005,472
Trust fund	1,392

Total	\$ 1,661,699
-------	--------------

Increase (Decrease) in Cash for 1990	151,331
--------------------------------------	---------

Ending Cash Balance October 31, 1990	\$ 1,813,030
--------------------------------------	--------------

Detail of Year-End Cash Balance:

Imprest fund—cash on hand	\$ 2,050
Checking accounts	75,406
Cash equivalents	1,732,312
Trust fund	3,262

Total	\$ 1,813,030
-------	--------------

Respectfully submitted,
Mike Heffron, General Manager

St. Paul, Minnesota

October 31, 1990



STATE OF MINNESOTA
OFFICE OF THE LEGISLATIVE AUDITOR
 VETERANS SERVICE BUILDING, ST. PAUL, MN 55155 • 612/296-4708
 JAMES R. NOBLES, LEGISLATIVE AUDITOR

Representative Dee Long, Acting Chair
 Legislative Audit Commission

Members of the Legislative Audit Commission

Mr. William Korff, President
 Board of Managers
 State Agricultural Society

Mr. Michael D. Heffron, Secretary - General Manager
 State Agricultural Society

Members of the State Agricultural Society

Audit Scope

We have audited the financial statements of the State Agricultural Society (the Society) as of and for the year ended October 31, 1990, and issued our report thereon dated January 11, 1991. We have also made a study and evaluation of the internal control structure of the Society in effect as of October 1990.

We conducted our audit in accordance with generally accepted government auditing standards, including Government Auditing Standards, issued by the Comptroller General of the United States. Those standards require that we plan and perform the audit to obtain reasonable assurance about whether the financial activities attributable to the transaction of the Society are free of material misstatements.

As part of our examination of the financial statements and our study and evaluation of the internal control structure, we performed tests of the Society's compliance with certain provisions of laws, regulations, contracts, and grants. However, our objective was not to provide an opinion on overall compliance with such provisions.

Management Responsibilities

The management of the Society is responsible for establishing and maintaining an internal control structure. This responsibility includes compliance with applicable laws, regulations, contracts, and grants. In fulfilling this responsibility, estimates and judgments by management are required to assess the expected benefits and related costs of internal control structure policies and procedures. The objectives of an internal control structure are to provide management with reasonable, but not absolute, assurance that:

Representative Dee Long, Acting Chair
 Members of the Legislative Audit Commission
 Mr. William Korff, President
 Mr. Michael D. Heffron, Secretary - General Manager
 Members of the State Agricultural Society
 Page 2

* assets are safeguarded against loss from unauthorized use or disposition;

* transactions are executed in accordance with applicable legal and regulatory provisions, management's authorization, and recorded properly.

Because of inherent limitations in any internal control structure, errors or irregularities may nevertheless occur and not be detected. Also, projection of any evaluation of the structure to future periods is subject to the risk that procedures may become inadequate because of changes in conditions or that the effectiveness of the design and operation of policies and procedures may deteriorate.

Internal Control Structure

For purposes of this report, we have classified the significant internal control structure policies and procedures in the following categories:

- * ticket sales revenue,
- * space rental revenue,
- * off season events revenue,
- * cash and investments,
- * fixed assets,
- * payroll expense, and
- * administrative expenses.

For all of the internal control structure categories listed above, we obtained an understanding of the design of relevant policies and procedures and whether they have been placed in operation, and we assessed control risk.

Conclusions

In our opinion, the internal control structure of the State Agricultural Society in effect at October 31, 1990, taken as a whole, was sufficient to meet the objectives stated above insofar as those objectives pertain to the prevention or detection of errors or irregularities in amounts that would be material in relation to the financial transactions of the Society.

However, we noted certain matters involving the internal control structure and its operation that we reported to the management of the Society in a meeting held on January 23, 1991.

The results of our tests indicate that, with respect to the items tested, the Society complied, in all material aspects, with the provisions referred to in the audit scope paragraphs. With respect to items not tested, noth-

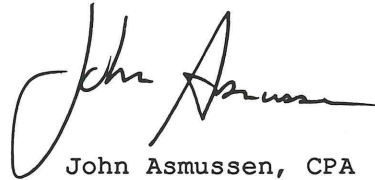
Representative Dee Long, Acting Chair
Members of the Legislative Audit Commission
Mr. William Korff, President
Mr. Michael D. Heffron, Secretary - General Manager
Members of the State Agricultural Society
Page 3

ing came to our attention that caused us to believe that the society had not complied, in all material respects, with those provisions.

This report is intended for the information of the Legislative Audit Commission and management of the Society. This restriction is not intended to limit the distribution of this report, which was released as a public document on February 7, 1991.



James R. Nobles
Legislative Auditor



John Asmussen, CPA
Deputy Legislative Auditor

END OF FIELDWORK: January 11, 1991

REPORT SIGNED ON: January 24, 1991

MEETING MINUTES

SPACE RENTAL COMMITTEE MEETING

Radisson Saint Paul Hotel
Saturday, January 13, 1990 — 1:00 P.M.

Members present: Keenan, chairman; Roehlke; Morris; Prokosch; Simons; Korff, Ex officio; Heffron, ex officio; Wenzel, ex officio; Sinclair, ex officio.

Also present: Annexstad; Lilliquist; Recknor; Frenette; Hammer and Enzler.

The committee was provided with a listing of participation/percentage attraction agreements, corresponding contract terms and ticket prices proposed for the 1990 fair. On a motion by Mr. Morris, seconded by Mr. Simons and carried, the subject contracts, terms and ticket prices were approved (Aye-4; Nay-0):

1990 MINNESOTA STATE FAIR PARTICIPATION/PERCENTAGE ATTRACTIONS

CONCESSIONAIRE	ATTRACTION	TICKET PRICE(S)	PERCENTAGE(S)
Antique Auto. Club of America-MN Region	Antique Auto Museum	\$1.00	30%
Arrow Enterprises, Inc.	Skyride	\$1.25 = Child-one way \$1.75 = Child-round trip \$1.75 = Adult-one way \$2.50 = Adult-round trip	25%
Desplenter Novelties	Novelty Concessions	Non-ticketed activity	Gtee. of \$14,000.00 ** and 30% of gross sales over \$60,000.00
Fairway Golf Range	Miniature Golf	Non-ticketed activity	33 1/3 %
Grandstand Entertainer	Entertainer	Non-ticketed activity	15 %
Merchandise Sales	Merchandise		
Grandstand Food/Bev. Concessionaire	Food & Beverages (Grandstand Seating Area)	Non-ticketed activity	30% of the first \$20,000.00 in gross sales and 32% of gross sales over \$20,000.00, plus appropriate 3.2 beer corkage fees for such sales
K & M Recreation, Inc.	Haunted House	\$2.00	27% of gross sales through \$100,000.00 and 30% of gross sales over \$100,000.00
Misc. and Bandshell	Entertainer	Non-ticketed activity	15 %
Entertainer	Merchandise Sales		
Merchandise Sales	Misc. Merchandise	Non-ticketed activity	10 %
Royal American Shows, Inc.	Carnival (Rides & Shows)	Single Coupon = \$.45* Coupon Sheets: up to and including \$250,000.00; 35% of ticket sales from \$250,000.00 - \$500,000.00; 38% of ticket sales from \$500,000.00 - \$750,000.00; 40% of ticket sales from \$750,000.00 - \$1,000,000.00; 43% of ticket sales from \$1,000,000.00 - \$1,250,000.00; 45% of ticket sales from \$1,250,000.00 - \$1,500,000.00; 48% of ticket sales from \$1,500,000.00 - \$1,750,000.00 and 50% of ticket sales over \$1,750,000.00	33 % of ticket sales
Ventnor Place, Inc.	Space Tower	Children = \$.75 Adults = \$1.50	25%
Ye Old Mill Amusements, Inc.	Old Mill Canal Boat Ride	Children = \$1.00* Adults = \$1.25*	33 1/3 %

* denotes ticket pricing increase from 1989

** denotes concession in the process of divestiture

The preceding represent percentage fees payable the Minnesota State Fair on receipts from operation of the above attractions. Percentages are applied as follows: state sales tax is deducted from the gross receipts and reconciliation between the State Fair and concessionaire is made on the balance.

On a motion by Mr. Simons, seconded by Mrs. Roehlke and carried the following list of 1990 malt beverage concession agreements were approved (Aye-4; Nay-0):

1990 MINNESOTA STATE FAIR 3.2 BEER CONCESSIONS, PRICES AND CORKAGE FEES

Brede Enterprises, Inc. — Blk. 35, Bldg. 351, Food Bldg. Beer Garden Section.

Cleworth's Food & Beverage — Blk. 42, Bldg. 421, Arcade Bldg. Space 1 - 15
Coliseum Concessions — Blk. 50, Bldg. 501, Coliseum Spaces 113 & 159, 200 & 250, 212 & 213 and 268.

James W. Crocker — Blk. 31, Lots 16, 17 & 18, Spaghetti Village.

John A. Giere — Blk. 42, Bldg. 421, Arcade Bldg. Spaces 24 - 32.

H.M.H. of St. Paul, Inc. — Blk. 47, Bldg. 471, Bazaar Space A.

Hildebrand Concessions, Inc. — Blk. 28, Bldg. 281, Grandstand Seating Area Seats & Infield.

Kirschner's Beer Stube — Blk. 45, Bldg. 451, Ag.-Hort. Bldg. Space H.

Midway Men's Club — Blk. 30, Lot S

Richard C. Werner — Blk. 42, Bldg. 421, Arcade Bldg. Spaces 16 - 21.

The preceding represents concessions at the State Fair previously contracted to sell 3.2 beer.

Reconciliation between the State Fair and the above concessionaires for the 1990 fair is proposed as follows:

- I. Corkage Fees
 - A. \$7.20 per case of beer sold
 - B. \$50.00 per 1/2 barrel of tap/draft beer sold
- II. Prices/Sizes
 - A. 24 - 12 ounce bottle cases
 1. \$1.50 per bottle, including state sales tax
 - B. Tap/Draft Beer - 1/2 barrels
 1. \$1.50 per 12 ounce cup, including state sales tax
 2. \$2.50 per 20 ounce cup, including state sales tax
- III. State Fair Building Fund Surcharge
 - A. 10% of the keg and case corkage fees
 1. \$5.00 per 1/2 barrel
 2. \$.75 per case

A list of multiple concession and exhibit contracts for 1990 was reviewed by the committee, following which it was moved by Mr. Prokosch, seconded by Mr. Morris and carried that the listed contracts be approved (Aye-4; Nay-0):

1990 MINNESOTA STATE FAIR MISCELLANEOUS CONCESSION/EXHIBITS

CONCESSION/EXHIBIT NAME	DESCRIPTION	# LOCATIONS
Larry Abdo/Gopher State Ice Co.	Pocket Pies/Ice	2
American Amusements Arcades	Coin Operated Arcade Games	2
American Dairy Assn.	Ice Cream, Milk, Dairy Foods and A.D.A. Merchandise	2
Mark Andrew	French Fries/S'Mores	2
Arrow Enterprises, Inc.	Skyride/Food & Beverages	2
Barberio Sales	Jewelry	2
Ben Benson	Bratwurst	2
Bodines, Inc.	Pianos and Organs	2
Cenaiko Enterprises, Inc.	Corn on the Cob/Chamios	2
Chrysler Corp.	Dodge Cars & Trucks	2
Gary Crutchfield Concessions	Cheese on a Stick	2 *
Wm. F. Danielson	Onion Rings/Pizza	2
Darlinda, Inc.	Dining Hall/Pie	2
Duis Enterprises	Novelties	2
Ecowater Systems	Water Treatment Systems	2
Ekluh Products	Eye/Glass Cleaner	2
Fisherman's Wharf Seafood	Fish	2
George Funk	Leather Crafts/Coffee	2
Caribaldi's/French 1/4 Del.	Pralines/Jewelry	2
Gasthaus Edelweiss	Bratwurst/Food & Beverage	2
Giant Ride, Inc.	Giant Slide/Cheese on a Stick	2 *
John A. Giere	Food, Beverages & 3.2 Beer/ Games	2 *
Connie Hanian	Lemonade/Tacos	2 *
Holly's Hobby	Hand Crafts	2
Shirley Hudspeth	Personalized & Victorian Merchandise/Rock & Roll Merchandise	2 *
Tina Isaac	Snacks/Food & Beverages	2
Jamar Products	Rhinestone Setters/Embroidery Needles	2 *
Gregory B. Kusick	Cotton Candy	2
Gary Larson	Popcorn, Carmel Corn and Carmel Apples	2
Kurt Larson	Strawberry Pie, Shortcake & Drink/Tiny Tim Donuts	2
Major League Sports Shops	Professional Sports Team Merchandise	2
Matt Milner Sales	Novelties	2
Mini-Kabob Foods	Kabobs	2
MN Honey Producers	Honey, Honey Ice Cream and Honey Candy	2
MN Turkey Growers	Exhibit/Turkey Food Products	2
Lee Moss Amusements	Digger Skill Games	2 *
Muskar, Inc.	Fried Cheese Curds	2
National Icee Corp.	Icee Frozen Beverages	2
National Service Company	Jewelry Cleaner	2 *
Nomar, Inc.	Hokey Sweepers, Dusters & Brooms	2
Northland Emblem	Patches & Emblems for Hats	2 *
Louise H. O'Neil	Hot Dogs on a Stick	2
Orange Treat	Orange Treat Drink/Pineapple on a Stick	2
Patterson Products	Resin Products/Hors d'oeuvre Makers	2 *
Jack Robinson	Smorgasbord/Food & Beverages	2
Schmitt Music Centers	Pianos and Organs	2
Robert L. Shutes	Food & Beverages	2
W. F. Spiess & Sons	Carved Wood Signs	2
David K. Sunderland	Popcorn, Carmel Corn, Carmel Apples and Root Beer	2
Tom Thumb Donut Corp.	Tom Thumb Donuts	2
Art Tysk Concessions	Popcorn, Carmel Corn, Carmel Apples, Candy, Gum & Beverages	2
Jodeen L. Warden	Popcorn, Carmel Corn, Carmel Apples and Rosettes	2
Watkins, Inc.	Watkins Products	2

Jerry Woldorsky	Buffalo Burgers/Baked Potatoes	2	
Wozniak Concessions	French Fries	2	
Robert W. Crocker	Root Beer	3	
Delrick Enterprises	Popcorn, Carmel Corn, Carmel Apples and Beverages	3	
Encyclopaedia Britannica	Encyclopaedias	3	*
Fresh Fruit	Fruit	3	
James Johnson	Ft. Long Hot Dogs	3	****
M & D Enterprises	Fudge	3	*
Chester H. Nairne Company	Osterizer Blenders/Supra Silverstone Cookware	3	*
Edward & Sally Nuebel	Fish & Chips/Nut Products	3	*
Offerman and Company	Investment Information	3	
Fred C. O'Neil, Jr.	Hot Dogs on a Stick	3	
Leah H. O'Neil	Hot Dogs on a Stick	3	
Theodore G. O'Neil	Hot Dogs on a Stick	3	
James & Ethel Peters	Hot Dogs/Polish Sausage	3	*
Schultz's Concessions	Hamburgers & Hot Dogs	3	
Byron & Gloria Shutes	Food & Beverages	3	
John Tysseling	Fried Mushrooms/Turkey Drumsticks/Popcorn	3	
Universal International, Inc.	Jewelry, Puppets, Toys and Gift Merchandise	3	
Kathy Yahr	Cotton Candy	3	
Coliseum Concessions	Food, Beverages and 3.2 Beer	4	
Lynn Davis	Ice Cream, Sno Cones, Carmel Apples and Beverages	4	**
Maxine W. Davis	Ice Cream, Sno Cones, Carmel Apples and Beverages	4	**
James Hartley	Cotton Candy	4	*/**
Hixon Glass Blowers	Blown & Spun Glass	4	*
Hohenwald Enterprises, Inc.	Food and Beverages	4	
Minnetonka Moccasin Company	Moccasin Footwear	4	
Philip M. Sampson	Games of Skill	4	**
Schroder Concessions	Popcorn, Carmel Corn, Carmel Apples Cheese Curds, Lemonade & Bratwurst	4	
Televac Computer Company	Personality Computers	4	*/**
Gregory J. Tetrault	Ice Cream, Sno Cones, Carmel Apples and Beverages	4	**
Melvyn Townsend	Ft. Long Hot Dogs	4	****
Jane G. Volin	Cigarettes and Cigars	4	
Paul S. Ward	Corn on the Cob, Hamburgers Ft. Longs and Chicken	4	*/**
World Book-Childcraft Intl.	Encyclopaedias	4	**
Todd A. Erickson	Coin Operated Arcade Games/ Games of Skill	5	**
(State Fair Penny Arcade)	Sno Cones	5	****
Hannasch, Inc.	Sno Cones	5	****
Eugene R. LaVaue	Vegetable Cutters, Dusters, Rosette Irons, Bowmakers, Woks and Rug Braiders	5	****
Syndicate Sales Corp.	Heart Rate Monitor Machines	6	
Compurate Leasing	Gum Ball & Charm Machines	12	
Burton F. Johnson	Newspaper Racks	12	
USA Today	Newspaper Racks	16	
Minneapolis Star Tribune	Newspaper Racks	16	
St. Paul Pioneer Press - Dispatch	Novelties	21	*/****
Desplenter Novelties	Advertising Park Benches	40	
U.S. Bench Corporation			

* Denotes Non-Minnesota Concessionaires/Exhibitors
 ** Denotes Concessionaires slated for divestiture beginning in 1990
 **** Denotes Concessionaires in the process of divestiture (1989)

Staff reports reflecting comparisons of multiple concession and exhibit contracts for 1975 through 1989 were presented to the committee. Following their review it was moved by Mr. Prokosch, seconded by Mr. Simons and carried that the reports be accepted (Aye-4; Nay-0):

MINNESOTA STATE FAIR EXHIBIT/CONCESSION CONTRACT COMPARISON 1985 - 1986 - 1987 - 1989

Number of individual locations	Held by the following number of persons			
	1985	1986	1987	1989
1	865	867	874	959
2	55	59	53	55
3	24	25	25	17
4	10	7	7	7
5	4	9	8	10
6	0	2	0	3
7	3	3	3	0
9	1	1	1	0
12	0	1	0	0
23	0	0	0	1
25	0	0	0	0
26	1	0	0	0
27	0	0	1	0
33	1	1		
Total number of locations available	1,196	1,220	1,180	1,239
Number of persons holding locations	964	975	972	1,052
% age of persons holding 4 or fewer locations	99%	98%	99%	99%
% age of locations held in units smaller than 5	91%	89%	92%	92%
Number of locations held by Minnesota residents	876	888	907	959
% age of locations held by Minnesota residents	73%	73%	77%	77%

MINNESOTA STATE FAIR FOOD CONCESSION/CONTRACT COMPARISON 1975 - 1980 - 1985 - 1989

Number of individual food locations	Held by following number of persons			
	1975	1980	1985	1989
1	95	131	147	166
2	20	19	29	26
3	4	9	15	14
4	5	7	6	4
5	3	1	2	7
6	0	0	0	2
7	0	2	2	
8	0	2	0	
9	1	1	1	
12	1	1	0	
13	2	0	0	
14	2	0	0	
15	0	1	0	
17	1	0	0	
26	0	0	1	
27	0	1		
32	1			
Total number of locations available	306	322	333	323
Number of persons holding locations	135	175	203	219
% age of persons holding 4 or fewer locations	92%	95%	97%	96%
% age of locations held in units smaller than 5	55%	68%	82%	85%
Number of locations held by Minnesota residents	158	288	292	282
% age of locations held by Minnesota residents	52%	89%	88%	87%

A report of carnival revenues (1979 through 1989) was presented for committee consideration.

CARNIVAL REVENUES 1979 through 1989

Year	Total Pre-Tax Gross	Advance Sale (Pre-Tax)	Gross After Tax	Fair Attendance	Per Cap Spending	Rank
1989	\$1,700,811.05	\$37,344.00	\$1,604,538.73	1,551,361	\$1.10	3
1988	\$1,808,701.40	\$23,730.00	\$1,706,322.07	1,621,279	\$1.12	1
1987	\$1,772,088.00	\$18,036.00	\$1,671,781.13	1,612,178	\$1.10	2
1986	\$1,680,873.45	\$11,058.00	\$1,585,729.67	1,565,349	\$1.07	4
1985	\$1,462,860.64	- 0 -	\$1,380,057.21	1,496,014	\$.98	5
1984	\$1,380,367.35	- 0 -	\$1,302,233.35	1,446,450	\$.95	6
1983	\$1,143,510.08	- 0 -	\$1,078,783.09	1,347,884	\$.85	7
1982	\$1,035,334.65	- 0 -	\$ 976,730.80	1,321,785	\$.78	9
1981	\$ 980,862.18	- 0 -	\$ 925,341.68	1,414,809	\$.69	11
1980	\$ 984,288.33	- 0 -	\$ 928,573.90	1,325,360	\$.74	10
1979	\$1,131,992.02	- 0 -	\$1,067,917.00	1,405,669	\$.81	8

Meeting adjourned.

PLANNING COMMITTEE MEETING

St. Paul Radisson Hotel
 Sunday, Jan. 14, 1990 — 2:00 p.m.

Members present: Lund, chair; Simons; Lilliquist; Roehlke; Prokosch; Keenan; Korff, ex officio; Heffron, ex officio; Wenzel, ex officio. Also present: Morris; Recknor; Fischler; Frenette; Sinclair; Hammer.

A proposed 1990 improvement and maintenance budget totaling \$2 million was presented by Mr. Wenzel and reviewed by the committee. Also discussed was a deferred project list of approximately \$915,000.

Following a detailed discussion by the committee and staff, it was moved by Mr. Keenan, seconded by Mr. Simons and carried that the budget be accepted as presented and that a committee recommendation be made for full board approval. Included in the motion was staff authority to adjust specific line items as appropriate to changes which might occur during the course of the budget year (Aye-5; Nay-0).

It was moved by Mr. Prokosch, seconded by Mr. Lilliquist and carried that secretary be authorized to release the sum of \$438,000 from the building fund for direct application to structure improvements no. A-22 (upgrade, seal and add new seats in Grandstand); no. A-29 (upgrade service building restrooms); no. A-38 (partial replacement of food building roof); and no. A-40 (enlarge public safety building) (Aye-5; nay-0).

Meeting adjourned.

LIFE MEMBER ADVISORY COMMITTEE

St. Paul Radisson Hotel
 Monday, Jan. 15, 1990 — 10:45 a.m.

Members present: Sulo Ojakangas, chairman; Harveydale Maruska; Gale Frost; Jim Sinclair, ex officio.

A motion by Mr. Frost calling for past presidents of the society to serve as an informal advisory committee to the State Fair History Museum, for the purpose of reviewing the museum budget, new displays, changes, etc. was seconded by Mr. Maruska and carried.

The committee discussed the impact light rail transit may have on the State Fairgrounds and recommended that the fair avail itself of future opportunities which may allow for purchase of adjacent property from the University of Minnesota for fairgrounds expansion.

On a motion by Mr. Maruska, seconded by Mr. Frost and carried, the meeting was adjourned.

MEETING OF THE GOVERNING BOARD MINNESOTA STATE AGRICULTURAL SOCIETY

St. Paul Radisson Hotel
Monday Jan. 15, 1990 — 10:45 a.m.

Members present: Bill Korff, president; Bert Lund and Richard Keenan, vice president(s); Martin Annexstad; Willis Lilliquist; Howard Morris; Vern Prokosch; Howard Recknor; Eileen Roehlke; Don Simons; Mike Heffron, secretary.

Also present: Jim Sinclair; Karen Leach; Ken Wenzel; Jerry Hammer; Steve Pooch; Rick Frenette; Sherry Enzler; Jim Donnelly.

Oaths of office were administered to the newly elected officers and board members.

It was moved by Mr. Lund, seconded by Mr. Lilliquist and carried that Mike Heffron be reappointed secretary-general manager of the society for a period of one year with his annual salary fixed at \$77,000. In addition thereto, it was specified that Mr. Heffron be required to live on the State Fairgrounds for the convenience and to the benefit of the society with gratis rent, utilities and telephone (Aye-9; Nay-0). Oath of office administered to Heffron.

Minutes of the Nov. 9 board and space rental committee meetings, previously mailed to the members, were approved on a motion by Mr. Lund, seconded by Mr. Simons and carried (Aye-9; Nay-0).

A motion to approve minutes in vacation for the period Nov. 10, 1989 through Jan. 12, 1990, and the administrative action noted therein was offered by Ms. Roehlke, seconded by Mr. Annexstad and carried (Aye-9; Nay-0).

Secretary presented the financial statement of Dec. 31, 1989 as follows:

GENERAL FUND ACTIVITY:

Cash balance-Nov 30, 1989		\$	603
Add: Dec. Cash Deposits	\$ 359,740		
Less: Payroll Ending Dec. 6	(61,310)		
Payroll Ending Dec. 20	(56,899)		
Dec. Case Disbursements	(193,953)		47,578
Cash Balance - Dec. 31, 1989		\$	48,181

MARKETABLE SECURITIES ACTIVITY:

Balance-Nov. 30, 1989		\$	1,324,662
Less: Service Charges	(253)		
Securities Cashed	(250,000)		(250,253)
Balance-Dec. 31, 1989		\$	1,074,409

BUILDING FUND ACTIVITY:

Balance-Nov. 30, 1989		\$	190,356
Add: Interest Earned		\$	
Less: Service Charges	(39)		(39)
Balance-Dec. 31, 1989		\$	190,317

CASH BALANCES FOR MONTH ENDING DECEMBER 31:

	1988	1989
General Fund	\$ 109,810	\$ 48,181
Petty Cash	200	500
Marketable Securities	1,309,519	1,074,409
Building Fund	202,127	190,317
Total Cash Balances	\$ 1,621,656	\$ 1,313,407

Upon a motion by Mr. Morris, seconded by Mr. Prokosch and carried, the financial statement as presented was approved (Aye-9; Nay-0).

A resume of financial information, covering 1976 through 1989, was circulated.

It was moved by Mr. Simons, seconded by Mr. Annexstad and carried that the North Star State Bank of Roseville be designated as depository for the society's general fund, premium fund, regular payroll fund and fair-period payroll fund accounts (Aye-9; Nay-0).

It was moved by Mr. Annexstad, seconded by Mr. Prokosch and carried that the following signatures be authorized for society accounts (Aye-9; Nay-0):

1. **General Fund** - Richard Frenette, Karen Leach, Kenneth R. Wenzel or Michael D. Heffron (any combination of two signatures). When used for ticket and entry refund checks in amounts of less than \$100, "Frenette/Heffron" signature plate is authorized. When used for checks given in exchange for cash from second parties (bank drafts), "Frenette/Heffron" signature plate is authorized.

2. **Regular and Fair Period Payroll** - Michael D. Heffron, Kenneth R. Wenzel or Richard Frenette (one signature).

3. **Premium** - Michael D. Heffron, Kenneth R. Wenzel or Richard Frenette; "Heffron" signature plate also authorized (one signature).

Note: When signature plates are used, signature must be applied by a person in the finance group not involved in check preparation.

Upon a motion by Mr. Lilliquist, seconded by Mr. Morris and carried, the following standing committee assignments were made for 1990 (Aye-9; Nay-0):

FINANCE COMMITTEE—Morris, chair; Lilliquist; Roehlke; Lund; Annexstad; Keenan; Korff, ex officio; Heffron, ex officio; Leach, ex officio; Frenette, ex officio.

GOVERNMENTAL AFFAIRS COMMITTEE—Annexstad, chair; Lilliquist; Roehlke; Morris; Keenan; Simons; Korff, ex officio; Heffron, ex officio; Leach, ex officio; Hammer, ex officio.

LIFE MEMBER ADVISORY COMMITTEE—Ojakangas, chair; Tiffany, vice chair; Sprengel; Muckle; Keskinen; Grussendorf; Frost; Lammers; Wilkins; Johnston; Maruska; Carnes; Franke; Korff, ex officio; Heffron, ex officio; Leach, ex officio; Sinclair, ex officio.

OPERATIONS COMMITTEE—Roehlke, chair; Lilliquist; Lund; Annexstad; Simons; Recknor; Korff, ex officio; Heffron, ex officio; Wenzel, ex officio; Pooch, ex officio.

PLANNING/UTILIZATION COMMITTEE—Lund, chair; Lilliquist; Roehlke; Prokosch; Keenan; Simons; Korff, ex officio; Heffron, ex officio; Wenzel ex officio, Frenette, ex officio.

PUBLIC AFFAIRS COMMITTEE—Lilliquist, chair; Roehlke; Morris; Annexstad; Prokosch; Recknor; Korff, ex officio; Heffron, ex officio; Sinclair, ex officio; Hammer, ex officio.

RULES/PREMIUM LIST COMMITTEE—Prokosch, chair; Lilliquist; Morris; Lund; Annexstad; Recknor; Korff, ex officio; Heffron, ex officio; Hammer, ex officio; Pooch, ex officio.

SPACE RENTAL COMMITTEE—Keenan, Chair; Roehlke; Morris; Lund; Prokosch, Simons; Korff, ex officio; Heffron, ex officio; Wenzel, ex officio; Sinclair, ex officio.

If was moved by Mr. Morris, seconded by Mr. Prokosch and carried that the following be appointed department coordinators and superintendents for 1990 (Aye-9; Nay-0):

Admissions (Roehlke)—Lyle Anderson

Agriculture Day (Lilliquist)—

Agriculture-Horticulture (Recknor)—

Crops—Duane Smith

Bee—Winnie Johnson

Christmas Tree—Greg Ustruck

Flowers—Martha Carnes

Fruits—Louis Quast

Vegetable—Curt Klint

Cattle (Lilliquist)—Ray Arthaud

Creative Activities (Prokosch)—Evelyn Hagen

Dairy Products (Recknor)—Cliff Markuson

Education (Simons)—Jim Brown

Entertainment (Simons)—Karen Leach

Free Entertainment—Renee Alexander

Grandstand Production—Neil Larson

Fine Arts (Roehlke)—Pat Kennedy Crump

Forage (Recknor)—Dan Elmer

4-H Club (Keenan)—Juanita Reed-Boniface

FFA (Lund)—Paul Day

Goats (Annexstad)—Kevin LeVoor

Horse (Morris)—Bob Peterson

Legislative-Editorial (Annexstad)—Jerry Hammer

Llamas (Prokosch)—Verne Greenlee

Meats (Lilliquist)—Ed Butler

Media & Public Relations (Lilliquist)—Jery Hammer

Special Promotions—Ken Giannini

Parking (Keenan)—Rov Vannelli

Plant Management (Roehlke)—Joe Fischler

Greenhouse—Bill Hermes

Plant Services—Phil Fisher

Poultry (Morris)—Harold Thomforde

Public Safety (Lund)—Art Blakey

Rental Services (Keenan)—Jim Sinclair

Sanitation (Morris)—Scot Ribar

Senior Citizens (Recknor)—Marge Krueger

Sheep (Prokosch)—Bill Schulke

Swine (Annexstad)—Jerry Hawton

Ticket Audit (Lund)—Dick Reinhardt

Tickets (Keenan)—Rick Frenette

Box Office—Sue Lynskey

Youth Camp (Lund)—Darrell Vanyo

Mr. Korff recessed the board meeting to accomodate standing committee meeting as follows:

OPERATIONS COMMITTEE MEETING

Members present: Roehlke, chair; Lilliquist; Lund; Annexstad; Simons; Recknor; Korff, ex officio; Heffron, ex officio; Wenzel, ex officio; Pooch, ex officio.

It was moved by Mr. Simons, seconded by Mr. Lilliquist and carried that the following outside gate "all pay policy" be reaffirmed and extended through 1990: "Entry into the Minnesota State Fair shall be solely contingent upon the presentation and surrender of a valid ticket of admission." (Aye-5; Nay-0).

It was moved by Mr. Lilliquist, seconded by Mr. Recknor and carried to approve the following outside gate fee schedule for 1990: Child admission (5 through 12) - \$2.50; adult admission (13 through 64) - \$4; senior admission (65 and over) - \$2.50; vehicle admission - no charge; adult discount admission (available in advance only) - \$3.25; child/senior discount admission (available in advance only) - \$2 (Aye-5; Nay-0).

Upon a motion by Mr. Simons, seconded by Mr. Annexstad and carried, secretary was authorized to implement a flexible Grandstand and Coliseum pricing schedule and seating configuration based on the cost of talent contracted for each show. (Aye-5; Nay-0).

Committee meeting adjourned.

PUBLIC AFFAIRS COMMITTEE MEETING

Members present: Lilliquist, chair; Roehlke; Morris; Annexstad; Prokosch; Recknor; Korff, ex officio; Heffron, ex officio; Sinclair, ex officio; Hammer, ex officio.

The following proposed advertising and communications budgets for 1990 were introduced:

ADVERTISING BUDGET

		'89 actual	'90 budget	
Media:	Print	177,942	187,000	
	Radio	85,158	83,000	
	Television	122,603	129,000	
	Outdoor	20,374	21,000	
	Transit (bus sides)	17,941	19,000	
		424,018	439,000	
Production:	Print	25,864	27,000	
	Radio	4,511	5,000	
	Television	31,340	33,000	
	Transit	10,008	11,000	
	Misc.	9,388	10,000	
		85,760	91,000	
Final payment to Carmichael Lynch (1988):		10,094	\$0	
		\$519,872	\$530,000	

MEDIA & PUBLIC RELATIONS BUDGET

		'89 actual	'90 budget	
Payroll:	Full time:	62,344	89,000	
	Part time	15,928	9,000	
	Information Services	8,021	----	
	Gophers	1,871	2,000	
		88,164	100,000	
Printing:	Two newsletters	55,341	36,000	
	Daily schedule	4,494	7,500	
	Three plate pages	1,557	1,700	
	Ed/Leg materials	383	500	
	Posters	5,771	6,000	
	Maps	2,020	2,000	
	Grandstand flyer	----	9,000	
	Misc.	1,272	1,000	
		70,838	63,700	
Ed/Leg supper:		6,929	8,000	
MNA & Miscellaneous Subscriptions:		1,782	2,000	
Office Supplies & Rentals:		3,721	2,600	
Photography:		6,818	8,000	
Promotional tickets:		13,753	12,000	
Other:	Awards	3,247	3,500	
	Media Reimbursement	79	1,500	
	Novelties	2,654	2,500	
	Vehicle rental	1,151	1,200	
	Sundries	8,902	9,000	
	Video update	----	6,000	
		16,033	23,700	
		\$208,038	\$220,000	

Following discussion, budgeted advertising expenditures of \$530,000 and media/public relations expenditures of \$220,000 were approved for 1990 on a motion by Mr. Annexstad, seconded by Mr. Morris and carried (Aye-5; Nay-0).

Committee meeting adjourned.

RULES/PREMIUM LIST COMMITTEE MEETING

Members present: Prokosch, chair; Lilliquist; Morris; Lund; Annexstad; Recknor; Korff, ex officio; Heffron, ex officio; Hammer, ex officio; Pooch, ex officio.

Secretary presented staff recommended rule changes for consideration. After review, it was moved by Mr. Annexstad, seconded by Ms. Roehlke and carried to approve the following amendments as presented (Aye-5; Nay-0):

S.F. 1.3 - All pay gates Entry into the Minnesota State Fair shall be solely contingent upon the presentation and surrender of a valid ticket of admission in accordance with the most current schedule of gate prices as established by the board of managers. Only properly identified emergency vehicles with crew personnel, such as police, fire and ambulance, as well as properly identified State Fair service vehicles with crew personnel, shall be exempted from this rule when engaged in legitimate emergency or service duty which requires passage through State Fair admission gates. (1-15-90)

S.F. 1.5-Pass-out gates A pass-out system is operated by the State Fair at several of its outside gates. Persons exiting through these gates may, upon request, have their hand and/or vehicle stamped for readmittance without additional charge. Readmittance will be honored the same day as issuance only. (1-15-90)

S.F. 1.18-Pets-Dogs No dogs or other pets, other than seeing-eye dogs, shall be permitted on the State Fairgrounds at any time during the period of the State Fair except when confined within the campgrounds area. At times other than during the State Fair, dogs may be allowed on the State Fairgrounds if restrained on a leash of less than six feet in length. At no time may dogs be taken into State Fair buildings or barns except for purposes of being exhibited therein under authority of the secretary and general manager. State Fair security and watch personnel are empowered to order the removal from the State Fairgrounds or State Fair Campgrounds any dog found to be disturbing or endangering the public. This prohibition does not apply to the State Fair campgrounds or to other exhibit areas expressly designated by the secretary and general manager. (1-15-90)

Upon a motion by Mr. Lund, seconded by Mr. Annexstad and carried, authority was granted to the competitive exhibits supervisor, in coordination with department superintendents, to make adjustments in rules, release date or premium allocations for respective departments in accordance with guidelines established by the society's 1990 operating budget (Aye-5; Nay-0).

Committee meeting adjourned.

FINANCE COMMITTEE MEETING

Members present: Morris, chair; Lilliquist; Roehlke; Lund; Annexstad; Keenan; Korff, ex officio; Heffron, ex officio; Leach, ex officio; Frenette, ex officio.

Secretary presented proposed operating, maintenance and improvement budget(s) for 1990, stating that the maintenance/improvement figures on the expense side had been approved by the planning committee, Jan. 14, 1990.

After review and discussion, it was moved by Mr. Lund, seconded by Mr. Annexstad and carried that the 1990 operating, maintenance and improvement budget(s) be approved as presented (Aye-5; Nay-0).

It was moved by Mr. Lund, seconded by Mr. Lilliquist and carried that the secretary be authorized to release and transfer the sum of \$438,000 from the building fund for direct application to structure improvements (Aye-5; Nay-0).

Committee meeting adjourned.

Board and Committee meetings were declared recessed by President Korff to accommodate a special luncheon in honor of the Society's newest life member, Mr. Gale Frost. At approximately 1:15 p.m., President Korff called the full board back into session. All members present.

RECONVENED MEETING OF THE BOARD

Reports offered and action taken by the space rental, planning, operations, public affairs, rules/premium list and finance committee(s) were accepted and approved upon a motion by Mr. Lund, seconded by Mr. Simons and carried (Aye-9; Nay-0).

It was moved by Ms. Roehlke, seconded by Mr. Recknor and carried that secretary be authorized to adjust staff salaries effective the pay period which will begin Jan. 27, 1990 (Aye-9; Nay-0).

The following resolution was offered by Mr. Lund, seconded by Mr. Annexstad and carried (Aye-9; Nay-0):

It is hereby specified that Society employees Joe Fischler and Bill Hermes be required to live on the State Fairgrounds for the convenience and to the benefit of the Society with gratis rent, utilities and telephone. This resolution will be effective until Jan., 1991 and, at that time, will be presented for reconsideration.

Ms. Leach reviewed the status of contract negotiations with acts and attractions for Grandstand, Bandshell, Coliseum and other entertainment areas (no action required).

Proposed one-year contract renewals, covering the services of MTS/Northwest Sound; Toltz, King, Duvall, Anderson (architect/engineer); Triemert (painting); McQuillan Brothers (plumbing); Kehne (electric); S & P Construction (carpentry), were approved upon a motion by Mr. Simons, seconded by Mr. Prokosch and carried (Aye-9; Nay-0).

Mr. Wenzel reported that, in keeping with the contract presently in place with the St. Paul Radisson Hotel, the 1991 joint annual meeting of the Federation & Society will be held at the Radisson on Jan. 19-20-21 (Aye-9; Nay-0).

Secretary introduced for consideration several minor changes to existing employee bulletins, which changes will serve to bring these concerned directives into conformity with companion state employee regulations. It was moved by Mr. Morris, seconded by Ms. Roehlke and carried that the recommended changes be implemented, and further, that employee bulletin No. 6, having to do with mandatory retirement, be cancelled (Aye-9; Nay-0).

Upon a motion by Mr. Lund, seconded by Mr. Annexstad and carried, approval was given to the provision of a \$500 grant for 1990 employee programs administered by the Society's employee club, it being understood that funds so provided not be used for the personal benefit of any employee (Aye-9; Nay-0).

Secretary reported a growing interest on the part of off-season lessees suggesting they be allowed to incorporate charitable gambling into their fairgrounds events. Further, other individuals are now inquiring whether they might obtain concession space in order to sell state lottery tickets during the fair. Secretary indicated that he was currently and would in the future continue to communicate the board's policy as regards gambling, adopted 6-12-86, to wit: It was moved by Mr. Annexstad, seconded by Mr. Lund and carried that the board reiterate its long-standing policy of prohibiting gambling activity on the grounds, including bingo, pull-tabs and those other forms of gaming recently legalized under Minnesota statutes (Aye-9; Nay-0). No further action undertaken.

It was moved by Mr. Simons, seconded by Mr. Recknor and carried that authority be granted for members of the board to travel outside the state at society expense between this date and the date of the board's June meeting in order to visit other state and regional fairs (Aye-9; Nay-0).

MINUTES IN VACATION

January

18—Bob Anderson, superintendent of the education department, died after a long struggle with cancer.

21-24—Heffron attended the Western Fairs convention in Anaheim, Calif.

23—Several members of the staff met with Henry Brandt, former Nebraska State Fair manager and a Moroccan delegation to discuss aspects of fair management.

31—Staff attended a Legislative Audit exit conference to discuss accounting and record-keeping recommendations.

February

1—Sinclair and Frenette met with representatives of North Star State Bank to discuss sites for operating a banking facility at the 1990 fair.

6—Frenette and Heffron met with Dave Bauer and Nancy Carsten of Ticketmaster to discuss whether that agency would represent state fair ticket sales during 1990.

7—The Executive Committee approved the Jan. 31, 1990 cash transaction summary as follows:

GENERAL FUND ACTIVITY:

Cash Balance-Dec. 31, 1989		\$ 48,181
Add: Jan. Cash Deposits	\$ 232,587	
Less: Payroll Ending Jan. 3	(63,974)	
Payroll Ending Jan. 17	(56,089)	
Payroll Ending Jan. 31	(57,322)	
Jan. Cash Disbursements	(71,433)	(16,231)
Cash Balance-Jan. 31, 1990		\$ 31,950

MARKETABLE SECURITIES ACTIVITY:

Balance-Dec. 31, 1989		\$1,074,409
Add: Interest Earned	\$ 8,737	
Less: Service Charges	(256)	
Securities Cashied	(200,000)	(191,519)
Balance-Jan. 31, 1990		\$ 882,890

BUILDING FUND ACTIVITY:

Balance-Dec. 31, 1989		\$ 190,317
Add: Interest Earned	\$ 1,381	
Less: Service Charges	(40)	1,341
Balance-Jan. 31, 1990		\$ 191,658

CASH BALANCES FOR MONTH ENDING JANUARY 31:

	1989	1990
General Fund	\$ 54,927	\$ 31,950
Petty Cash	200	1,000
Marketable Securities	1,216,861	882,890
Building Fund	203,533	191,658
Total Cash Balances	\$1,475,521	\$1,107,498

12—Pooch and Cattle Superintendent Arthaud attended the annual meeting of the Minnesota Purebred Dairy Cattle Association in St. Cloud.

16—Aleck "Andy" Anderson, long-time service employee died after a short illness at the age of 98.

19—Howard Morris and Willis Lilliquist attended the National Date Festival in Indio, Calif.

20—Pooch met with Ann Connery of the Minnesota Paint Horse Association to discuss possible changes for the 1990 show.

23—Several board, life members and spouses, including Haveydale Maruska, Leo Keskinen, Bill Korff, Howard Recknor, Jerry Franke, Howard Morris and Willis Lilliquist, held a social get together in Mesa, Arizona. Also in attendance were Bonnie Scow and Dick Reinhardt.

23-25—Frenette and Pooch attended the Houston Livestock Show in Houston, Texas.

28—Senior executive staff, Fischler and Heffron met with representatives of BRW Architects to discuss plans for Commonwealth Park.

March

5—Hammer and Sinclair met with representatives of KLXK Radio to discuss exhibit space and promotions.

6—Art Blakey, Wenzel and Heffron met with Les Benson of the St. Paul Police Dept. to discuss traffic management for 1990.

8—Hammer met with representatives of Anheuser-Busch to discuss sponsorship.

9—Executive Committee approved the Feb. 28, 1990 cash transaction summary as follows:

GENERAL FUND ACTIVITY:

Cash Balance-Jan. 31, 1990		\$ 31,950
Add: Feb. Cash Deposits	\$ 433,089	
Less: Payroll Ending Feb. 14	(69,725)	
Payroll Ending Feb. 28	(63,132)	
Feb. Cash Disbursements	(303,205)	(2,973)
Cash Balance-Feb. 28, 1990		\$ 28,977

MARKETABLE SECURITIES ACTIVITY:

Balance-Jan. 31, 1990		\$ 882,890
Add: Interest Earned	\$ 7,156	
Less: Service Charges	(218)	
Securities Cashied	(350,000)	(343,062)
Balance-Feb. 28, 1990		\$ 539,828

BUILDING FUND ACTIVITY:

Balance-Jan. 31, 1990		\$ 191,658
Add: Interest Earned	\$ 1,338	
Less: Service Charges	(41)	1,297
Balance-Feb. 28, 1990		\$ 192,955

CASH BALANCES FOR MONTH ENDING FEBRUARY 28:

	1989	1990
General Fund	\$ 167,375	\$ 28,977
Petty Cash	200	2,550
Marketable Securities	1,023,152	539,828
Building Fund	203,674	192,955
Total Cash Balances	\$ 1,394,401	\$ 764,310

9-11—A Minnesota Deer Classic show was staged in the Coliseum.

13—Hammer attended a meeting of St. Paul District 10 Community Council, at which State Fair parking was discussed.

15—Hammer, Giannini and Ritt met with representatives of the Children's Radio Network.

17—A concrete seminar was held in the Coliseum.

17-20—Heffron attended the annual meeting of the Midwest Fairs Assn. in San Antonio, Tex.

18—Bob Jacobs, superintendent of swine at the Fair for many years, died after a short illness.

19—Hammer addressed the Midway Lions Club.

22—Heffron and Wenzel met with representatives of Medicine Lake Lines and Laidlaw Ltd., regarding sale of the bus company.

23—Pooch attended the annual meeting of the Minnesota Livestock Breeders in Waseca.

24-25—A weapon collectors show was staged in the Coliseum.

28—A reception was held to commemorate the retirement of service employee Ken Shoop.

31-1—A Ceramics Expo was held in the Coliseum.

April

2—Hammer, Sinclair, Wenzel and Heffron met with representatives of the St. Paul Pioneer Press to discuss a special promotion at the 1990 fair.

4—Heffron met with Jim Frost and Len Bonander of Americana Fireworks Co. to discuss plans for the 4th of July.

6-9—Now Sports held a bicycle sale in the Education Building and Annex.

7—ASC sponsored a motorcycle auction in the Coliseum.

8—St. Paul Police conducted a training exercise on Machinery Hill.

10—Sinclair, Wenzel and Heffron met with representatives of DNR to discuss tentative plans for improvement of the DNR exhibit building. Executive Committee approved the March 31, 1990 cash transaction summary as follows:

GENERAL FUND ACTIVITY:

Cash Balance-Feb. 28, 1990		\$ 28,977
Add: Mar. Cash Deposits	\$ 335,284	
Less: Payroll Ending Mar. 14	(75,694)	
Payroll Ending Mar. 28	(68,300)	
Mar. Cash Disbursements	(253,530)	(42,240)
Cash Balance-Mar. 31, 1990		\$ (13,263)

MARKETABLE SECURITIES ACTIVITY:

Balance-Feb. 28, 1990		\$ 539,828
Add: Interest Earned	\$ 4,525	
Securities Purchased	13,494	
Less: Service Charges	(140)	
Securities Cashied	(225,000)	(207,121)
Balance-Mar. 31, 1990		\$ 332,707

BUILDING FUND ACTIVITY:

Balance-Feb. 28, 1990		\$ 192,955
Add: Interest Earned	\$ 1,200	
Less: Service Charges	(37)	1,163
Balance-Mar. 31, 1990		\$ 194,118

CASH BALANCES FOR MONTH ENDING MARCH 31:

	1989	1990
General Fund	\$ 38,644	\$ (13,263)
Petty Cash	200	500
Marketable Securities	828,030	332,707
Building Fund	205,038	194,118
Total Cash Balances	\$1,071,912	\$ 514,062

11—Frenette, Sinclair, Wenzel and Heffron met with representatives of North Star Bank and Toltz, King, Duval to discuss preliminary plans for construction of a service and bank facility in Block 30.

12—Wenzel, Hammer, Goiffon and Casey met with SHARE Representatives Mary Lou Reda and Gayle Schech to finalize SHARE's sponsorship and participation in Senior Citizen Days.

13—Heffron met with Representative Jim Rice to discuss current legislation affecting the State Fair.

16—Rochelle Rustad joined the rental services staff. Leach, Hammer and Heffron met with Jim Frost to discuss a sponsorship arrangement with Proctor & Gamble.

17—The State Bureau of Criminal Apprehension held a training exercise in the Coliseum. A Space Rental Review meeting was held in the Administration Building (see minutes which follow). A meeting with the Celebrate Minnesota Staff was attended by Hammer, Giannini, Leach and Heffron. Pooch, Wenzel, Goodrich, Fischler and Heffron met with contractor Joe Doty to review plans for a special meeting room and lounge proposed for construction in the Coliseum.

17—Hammer met with representatives of Coca Cola-Midwest to discuss sponsorship and promotion.

18—St. Paul Police held a training session on Machinery Hill.

19—Heffron attended a conference committee meeting at the Capitol during which HF 2081 was discussed. (This bill included language deemed not in the best interest of the fair.)

19-21—The Minnesota Forestry Fair was held at the DNR Building.

19-23—Burger Brothers conducted a sporting goods sale in the Education Building.

20—Hammer, Sinclair and Frenette met with representatives of the Leinenkugel Brewing Co. to discuss Bazaar sponsorship opportunities for the 1990 fair.

20—Wenzel and Heffron met with U of M financial officer Gus Donhowe to discuss the transitway system under development between the St. Paul and Minneapolis campuses of the University.

20-22—The Gopher State car show was featured in the Coliseum and Poultry Barn.

21-22—A flea market, sponsored by Prime Promotions, was held in the Grandstand, East Room and Infield.

25—Heffron and Sinclair met with Jerry Murphy of Murphy Brothers Carnival. Pooch and Heffron attended the annual meeting of the Roseville/Falcon Heights Chamber.

25-26—DNR distributed seedling trees at the DNR exhibit complex.

26—Heffron met with Representative Jim Rice to discuss the final disposition of HF 2081.

27-29—A Canoe Expo was staged in the Education Building and Annex; the Star of the North Antique show was held in the Grandstand.

27-1—Wenzel, Frenette and Heffron attended the IAFE spring management conference in Grand Rapids, Mich.

28-29—The annual Minnesota Horse Expo was presented in the livestock complex.

30—The U of M (FFA) held livestock judging in the Coliseum. President Bill Korff received a 1990 Honorary State FFA Degree in ceremonies at Aldrich Arena in St. Paul.

May

2—The Ramsey County Sheriffs Dept. held a training session on Machinery Hill.

2—Ohlhauser met with Minnesota Twins representative Betty Piper regarding the upcoming Ag Awareness Days promotion, Aug. 31 - Sept. 2.

3-6—United Stores held a camping show in the Education Building.

4-6—The Open Road Pet Expo was staged in the Grandstand; the Sahara Sands Horse Show was presented in the Coliseum.

5—The first of three training sessions for superintendents was held in Administration Conference Room. The other two meetings were held on May 8 and May 10.

5-6—The Spring Sportacular baseball card show was staged in Modern Living.

6—The Northland Antique Toy Show was presented in Empire Commons.

8—Bicycle races were contested on Machinery Hill.

9—Bill Korff and Heffron met with Rolly Larson, representing the Midwest Showmen's Association, to discuss a headquarters location for the Showmen on the grounds. Leach, Sinclair and Heffron attended a meeting of the St. Anthony Park District Council at which the U of M transitway was discussed.

10—The Executive Committee approved the April 30, 1990 cash transaction summary as follows:

GENERAL FUND ACTIVITY:

Cash Balance-Mar. 31, 1990		\$ (13,263)
Add: Apr. Cash Deposits	\$ 374,447	
Less: Payroll Ending Apr. 11	(72,589)	
Payroll Ending Apr. 25	(64,062)	
Apr. Cash Disbursements	(173,009)	64,787
Cash Balance-Apr. 30, 1990		\$ 51,524

MARKETABLE SECURITIES ACTIVITY:

Balance-Mar. 31, 1990		\$ 332,707
Add: Interest Earned	\$ 3,174	
Securities Purchased	2,408	
Less: Service Charges	(141)	
Securities Cashed	(235,000)	(229,559)
Balance-Apr. 30, 1990		\$ 103,148

BUILDING FUND ACTIVITY:

Balance-Mar. 31, 1990		\$ 194,118
Add: Interest Earned	\$ 1,344	
Less: Service Charges	(41)	1,303
Balance-Apr. 30, 1990		\$ 195,421

CASH BALANCES FOR MONTH ENDING APRIL 30:

	1989	1990
General Fund	\$ 122	\$ 51,524
Petty Cash	200	500
Marketable Securities	182,243	103,148
Building Fund	106,652	195,421
Total Cash Balances	\$ 289,217	\$ 350,593

10-12—An evangelical garage sale was held in the Crossroads Chapel.

12—A model railroad show was held in the Education Building. Ken Young, husband of employee Jane Young, died suddenly at the family's home in Roseville.

15—Heffron met with Sherry Enzler and Jim Donnelly to discuss legal issues related to the U of M transitway.

16—Gib Tiffany, past president and life member, passed away in Redwood Falls.

17—A meeting of retired agricultural men was held in the 4-H Building. Heffron spoke to the group.

17-22—A Budget Computer Sale was held at the Education Building.

18-20—A Country Folk Art Show was held in the Grandstand; a sewing machine sale was conducted in the Sentinel Building.

19—Board members Roehlke, Morris and Annexstad attended funeral services for Gib Tiffany in Redwood Falls. Heffron served as pall bearer.

21—Fischler, Frenette, Sinclair, Wenzel and Heffron met with representatives of Toltz, King, Duvall to discuss plans for a new visitor center in Block 30. Wenzel and Heffron met with U of M parking staff to discuss use of State Fair facilities for Olympic Festival parking.

22—Bicycle races were held on Machinery Hill. The media and public relations division hosted a meeting of the National Association of Government Communicators, Minnesota Chapter.

23—Giannini met with representatives of the MTC to discuss promotion of bus service to the fair. Hammer met with representatives of Pepsi to discuss sponsorship.

24—St. Paul Police conducted a training exercise on Machinery Hill. Heffron was presented the North Suburban Gavel Club leadership award for 1990 at ceremonies in the Shoreview Holiday Inn.

29-2—A reining horse show was staged in the Coliseum.

31-3—Flower City held a patio furniture sale in the Merchandise Mart.

June

1-3—A sportswear sale was held at the Home Improvement Building.

3—A General Motors antique car show was staged in the Infield.

5—Bicycle races were held on Machinery Hill.

6—Boy Scouts held a bicycle rodeo in the Midway Lot; St. Paul Police conducted a training exercise on Machinery Hill.

7-10—The National Square Dance Convention was held in the Education Bldg. and Annex, Childrens Theater, 4-H Bldg., Home Improvement, Modern Living and Campgrounds.

SPACE RENTAL COMMITTEE MEETING MINNESOTA STATE AGRICULTURAL SOCIETY

Administration Building, State Fairgrounds
Tuesday, April 17, 1990 — 10:00 a.m.

Members present: Keenan, chairman; Morris; Prokosch; Roehlke; Simons; Korff, ex officio; Heffron, ex officio; Wenzel, ex officio; Sinclair, ex officio.

The meeting was called to order by Chairman Keenan at 10:00 a.m.

Heffron provided the committee with a brief update on legislative matters relating to the popularity and acceptance of his proposed product and expressed desire that he be given further consideration should the fair determine it would like to expand the availability of same. On a motion by Mr. Simons, seconded by Mr. Prokosch and carried; previous staff action was supported. (Aye-5; Nay-0).

Sinclair reviewed staff handling of the 1990 space rental application submitted by Mr. Gerry Goblirsch for his firm, The Best Fry Company. Mr. Goblirsch commented on the popularity and acceptance of his proposed product and expressed desire that he be given further consideration should the fair determine it would like to expand the availability of same. On a motion by Mr. Simons, seconded by Mr. Prokosch and carried; previous staff action was supported. (Aye-5; Nay-0).

A motion was made by Mr. Prokosch, seconded by Mrs. Roehlke and carried that the application for space submitted by Ultimate Visions be denied in support of earlier staff action based on similarity of the product to others offered at the fair (Aye-5; Nay-0).

A request to transfer ownership of the Train House structure and equipment; an exhibit and display of miniature and toy trains and toys located on lot K in block 44, from Brian Cowdery to Michael Buchanan was approved on a motion by Mr. Simons, seconded by Mr. Morris and carried. Action is contingent upon Mr. Buchanan's understanding that no future sale or transfer of the structure would be permitted (Aye-5; Nay-0).

Meeting was adjourned at 11:10 a.m.

SPACE RENTAL COMMITTEE MEETING MINNESOTA STATE AGRICULTURAL SOCIETY

Administration Building, State Fairgrounds
Thursday, June 7, 1990 — 9 a.m.

Members present: Keenan, chairman; Lund; Morris; Prokosch; Roehlke; Simons; Korff, ex officio; Heffron, ex officio; Wenzel, ex officio; Sinclair, ex officio.

Also present: Annexstad; Lilliquist; Recknor; Rochelle Rustad; Sherry Enzler and Jim Donnelly.

The meeting was called to order at 9 a.m. by Chairman Keenan. Sinclair reviewed the meeting agenda, as well as the status of concession divestiture programs underway, after which Heffron reviewed the history and basis of such divestiture programs.

Maxine Davis was introduced to the committee and Sinclair summarized the Divestiture schedule put in place for Ms. Davis, Greg Tetrault and Lynn Davis per board action of Nov. 9, 1989.

Ms. Davis explained the history of her family's involvement at the fair and her understanding of the need for divestiture, but requested that baked potatoes be among those products they are permitted to retain. Baked potatoes were previously sold by her father from a concession at the southwest corner of the Food Building.

Discussion was undertaken regarding various physical options which might make it possible to accommodate the presentation of baked potatoes from one of the three concessions ultimately to be contracted to Greg Tetrault, Maxine or Lynn Davis. Mr. Heffron reiterated the need to acknowledge the individual nature of relationships between the fair and each of the three parties; following which Mr. Korff urged the committee to consider permitting baked potato sales in one of the concessions ultimately to be contracted to either Maxine Davis, Greg Tetrault or Lynn Davis.

On a motion by Mr. Lund, seconded by Mr. Prokosch and carried, staff was urged to work with the three subject concessionaires (Davis, Tetrault and Davis) toward provision of baked potato sales, rather than the products which they are presently permitted to offer, from one of the concession locations approved for retention.

Sinclair reviewed the basis for earlier denial of a concession space application submitted by Midwest Beverage Dispensing Company. Mr. Joseph Garcia explained the uniqueness of the beverage dispensing system he would use, the nutritional value of his proposed products and expressed flexibility in the space sampling, it was moved by Mr. Lund, seconded by Mr. Simons and carried that the subject space application be denied in support of previous staff action (Aye-5; Nay-0).

The application of Old Goat Company was placed before the committee for review after which it was determined that earlier staff action related to said application be supported based on the presence in current department files of earlier dated requests for space to present similar clothing items. Moved by Mr. Simons, seconded by Mr. Prokosch and carried (Aye-5; Nay-0).

In view of board action prohibiting gambling activity on the fairgrounds, taken at their Monday, Jan. 15, 1990 meeting, Mr. Sinclair advised the committee that an application had been received from the Minnesota State Lottery. Said application requested the opportunity to sell lottery tickets at the 1990 fair. No action necessary.

Adjournment was moved by Mr. Prokosch, seconded by Mr. Lund and carried (Aye-5; Nay-0).

MEETING OF THE GOVERNING BOARD MINNESOTA STATE AGRICULTURAL SOCIETY

Administration Building, State Fairgrounds
Thursday, June 7, 1990 — 10 a.m.

Members present: Bill Korff, president; Howard Recknor; Howard Morris; Eileen Roehlke; Rich Keenan; Willis Lilliquist; Bert Lund; Don Simons; Vern Prokosch; Martin Annexstad; Mike Heffron, secretary.

Also present: Karen Leach; Sherry Enzler; Ken Wenzel; Jim Sinclair; Jim Donnelly; Rick Frenette; Steve Pooch; Jerry Hammer; Rochelle Rustad.

Meeting called to order by President Korff at 10:22 a.m.

Upon a motion by Mr. Lund, seconded by Mr. Prokosch and carried, minutes of the 1-15-90 board meeting, previously mailed to the members, were approved (Aye-9; Nay-0).

Society minutes in vacation covering the period Jan. 18 through June 7, 1990, and the administrative action noted therein, were approved on a motion by Mr. Lund, seconded by Mr. Morris and carried. This action includes approval of the space rental committee meeting held on April 17 (Aye-9; Nay-0).

Secretary presented the May 31 financial statement as follows:

GENERAL FUND ACTIVITY:

Cash Balance-Apr. 30, 1990		\$ 51,524
Add: May Cash Deposits	\$ 614,027	
Less: Payroll Ending May 9	(86,646)	
Payroll Ending May 23	(68,915)	
May, Cash Disbursements	(434,310)	24,156
Cash Balance-May 31, 1990		\$ 75,680

MARKETABLE SECURITIES ACTIVITY:

Balance-Apr. 30, 1990		\$ 103,148
Add: Interest Earned	\$ 1,506	
Less: Service Charges	(46)	1,460
Balance-May 31, 1990		\$ 104,608

BUILDING FUND ACTIVITY:

Balance-Apr. 30, 1990		\$ 195,421
Add: Interest Earned	\$ 1,308	
Less: Service Charges	(40)	1,268
Balance-May 31, 1990		\$ 196,689

CASH BALANCES FOR MONTHS ENDING MAY 31:

	1989	1990
General Fund	\$ 365,936	\$ 75,680
Petty Cash	200	500
Marketable Securities	4,287	104,608
Building Fund	108,064	196,689
Total Cash Balances	\$ 478,487	\$ 377,477

After review of the statement, it was moved by Mr. Lund, seconded by Mr. Lilliquist and carried that the financial statement of May 31, 1990 be approved (Aye-9; Nay-0).

Approval of action taken earlier in the day (June 7) by the space rental committee was moved by Mr. Keenan, seconded by Mr. Simons and carried (Aye-9; Nay-0).

Upon a motion by Mr. Simons, seconded by Mr. Annexstad and carried, fair-period luncheon invitations were approved for the following: the board of the Minnesota Federation of County Fairs, Saturday, Aug. 25; State Fair hall of fame and life members, Sunday Aug. 26; Minnesota Livestock Breeders Association board, breakfast, Thursday, Aug. 30; and executive committee(s) of the Retail Farm Equipment Association and the Northwest Farm Equipment Association, Friday, Aug. 31. Also approved were invitations for the picnic supper for media, political and business representatives, Thursday, Aug. 30 (Aye-9; Nay-0).

It was moved by Mr. Lund, seconded by Mr. Morris and carried to authorize a society expenditure of up to \$1,000 to host a reception for horse show exhibitors during the fair (Aye-9; Nay-0).

Approval for payment of the following storage damage claims was moved by Mr. Annexstad, seconded by Ms. Roehke and carried (Aye-9; Nay-0): Mike Christensen, paint and fender damage, '63 Pontiac, \$420.31; Charles Erickson, door, fender and quarter panel damage, '63 Comet, \$418.68; Lee Fairbanks, paint chipped, '77 Cutlass, \$120.93; James Kvikstad, trailer jack bent, \$72.95.

Secretary outlined a staff recommendation under which the 4-H Department would be made exempt from the 16 percent building fund assessment for off-season rental of the 4-H Building. Recommendation accepted on a motion Mr. Lilliquist, seconded by Mr. Recknor and carried (Aye-9; Nay-0).

Department payroll schedules for 1990, as prepared by superintendents under budgetary guidelines and confirmed by appropriate supervisors were presented and approved on a motion by Mr. Annexstad, seconded by Mr. Recknor and carried (Aye-9; Nay-0).

Secretary informed the board that a group of society employees had asked that they be permitted to donate a portion of their vacation compensation to a fellow employee who recently experienced a family death accompanied by considerable medical expense. Upon a motion by Mr. Simons, seconded by Mr. Lund and carried, authority was granted to the Secretary to implement a one-time vacation donation and cash conversion allowance for the specified employee (only) (Aye-9; Nay-0).

Mr. Hammer updated the board on the fair's 1990 sponsorship program indicating that thus far \$93,000 has been committed by seven cash-sponsors. Negotiations continue with several other interested firms having a cash potential of an additional \$50,000. A large group of organizations were also committed to the fair as promotional sponsors. No action required on the sponsorship report.

Corporate and staff memberships in the following organizations were approved on a motion by Mr. Lund, seconded by Mr. Lilliquist and carried (Aye-9; Nay-0):

ORGANIZATION	AMOUNT
American Dairy Goat Association	106.00
American Horse Shows Association	50.00
American Horse Shows Association (dues)	600.00
American Horse Shows Saddle Seat Class	50.00
American Miniature Horse Association	25.00
American Paint Horse Association	10.00
American Quarter Horse Association	25.00
Appaloosa Horse Club	20.00
Better Business Bureau	175.00
Box Office Management International	135.00

Canadian Association of Expositions	125.00
Country Music Association	50.00
Executive Women Interantional	200.00
Greater Minneapolis Chamber of Commerce	300.00
International Arabian Horse Association	75.00
International Association of Fairs & Expositions	650.00
International Country Music Buyers Association	100.00
Mid-West Fairs Association	150.00
Midway Civic and Commerce Association	210.00
Minnesota Chiefs of Police	30.00
Minnesota Employee Recreation & Services Council	125.00
Minnesota Hunter and Jumper Association	50.00
Minnesota Ice Arena Managers Association	75.00
Minnesota Music Academy	30.00
Minnesota Quarter Horse Association	15.00
Minnesota Safety Council	75.00
Minnesota Society of Association Executives	125.00
National Institute of Government Purchasing	50.00
Nat'l Assn. of Business & Educational Radio	85.00
Outdoor Amusement Business Association	20.00
Professional Grounds Management Society	95.00
Recycling Association of Minnesota	50.00
Rocky Mountain Fair Association	250.00
Roseville Rotary Club	222.00
St. Paul Area Chamber of Commerce	420.00
St. Paul Convention Bureau	225.00
St. Paul Winter Carnival	142.00
State of Minnesota Cooperative Purchasing Venture	315.00
Suburban Area Chamber of Commerce	445.00
Tri-State Horseman's Association	50.00
Twin City Purchasing Management Association	155.00
Western Fairs Association	750.00
White Bear Lake Chamber of Commerce	133.00
TOTAL	6988.00

Mr. Frenette explained the arrangements made to provide full banking service in 1990 for State Fair visitors, concessionaires and exhibitors through North Star State Bank. Temporary facilities are scheduled for placement in Block 30. No action required on the banking report.

Grandstand, Coliseum, free stage and other fair-period contracts were reviewed by Ms. Leach and approved upon a motion by Mr. Lilliquist, seconded by Mr. Annexstad and carried (Aye-9; Nay-0). Following is a breakdown of contracts and terms:

CONTRACTOR	DATE	TERMS	VENUE
Southern Thunder Sound, Inc. (Sound)	8/22-9/3	\$18,525	Grandstand
Southern Thunder Sound, Inc. (Lights)	8/22-9/3	\$15,675	Grandstand
Video West	8/23-9/3	\$26,800	Grandstand
Julie Snouffer	8/23-9/2	\$3,600	Grandstand
Americana Fireworks Display Co.	8/23-9/2	\$32,000	Grandstand
T. G. Sheppard	8/23	\$9,000	Grandstand
Barbara Mandrell	8/23	\$55,000 plus 80% over \$80,000	Grandstand
Bill Cosby	8/25	\$150,000 plus 75% over \$175,000	Grandstand
Alan Jackson	8/26	\$6,000	Grandstand
Randy Travis	8/26	\$60,000 plus 90% over \$94,000 plus \$3,000 production	Grandstand
Bonnie Raitt	8/27	\$75,000 plus 75% over \$100,000	Grandstand
Patty Loveless	8/28	\$10,000	Grandstand
The Oak Ridge Boys	8/28	\$35,000 plus 90% over \$90,000 plus \$5,000 production	Grandstand
Roger Whittaker	8/30	\$50,000 plus 75% over \$75,000	Grandstand
The Beach Boys (Two Shows)	9/1	\$115,000 plus 80% over \$165,000	Grandstand
John Denver	9/2	\$60,000 plus 85% over \$90,000	Grandstand
American Speed Association (Sanction & Point Fund)	9/3	\$7,200	Grandstand
Southern Thunder Sound, Inc.	8/4-8/11	\$900 plus \$15/hour	Bandshell (Auditions)
Southern Thunder Sound, Inc.	8/23-9/3	\$16,350	Bandshell
Southern Thunder Sound, Inc.	8/23-9/3	\$5,775	Baldwin
Southern Thunder Sound, Inc.	8/23-9/3	\$3,050	Bazaar
Southern Thunder Sound, Inc.	8/23-9/3	\$3,050	Heritage
Southern Thunder Sound, Inc.	8/23-9/3	\$600	Heritage Dance Area
Southern Thunder Sound, Inc.	8/23-9/3	\$800	Air-Robics
Tom Chepokas Quartet	8/23-9/3	\$5,100	Bandshell
Williams & Ree	8/23-9/3	\$60,000	Bandshell
The Amazing Kreskin	8/23	\$5,500	Bandshell
Michael Johnson	8/29	\$5,500	Bandshell
Mason Dixon	8/23-9/2	\$15,000	Bandshell
Jason D. Williams	8/23-9/2	\$20,000	Bandshell
The Association	8/29-9/3	\$30,000	Bandshell
Lionell Cartwright	8/29-9/3	\$18,870	Bandshell
Thomas Baumgartner	8/23-9/2	\$7,500	Bazaar
f/s/o Comdey Hour			
Jack D' Johns	8/23-9/2	\$11,000	Bazaar
Tom Morley	8/23-9/2	\$7,500	Bazaar
f/s/o 78 R.P.M.			
Jerry Allison	8/29-9/3	\$15,000	Bazaar
f/s/o The Crickets			
5th Avenue/Geoffrey Thompson	8/29-9/3	\$3,000	Bazaar

Minnesota State Bar Association	8/23-9/1	\$357.50	Baldwin	John Magnuson	8/26	\$625	Milk Run
Trial by Jury				Audrey Lincoff	8/26	\$100	Milk Run
The Fantastic Covertibles	8/23-9/2	\$5,000	Baldwin	Kurt Grebner	8/26	\$50	Milk Run
High Noon/Darren Thompson	8/23-9/2	\$6,500	Baldwin	Vicki Knutson	8/26	\$100	Milk Run
Billy McLaughlin	8/29-9/3	\$3,000	Baldwin	Cliff Brunzell and the Golden Strings	8/23-9/3	\$7,021.56	Creative Activities
Midnight Rider/James B. Russell	8/29-9/3	\$3,000	Baldwin	Pig's Eye Jazz Band	7/28, 29, 8/4, 11	\$1,680	Amusements
The Rockin' Hollywoods	8/29-9/3	\$8,500	Baldwin	Aerial Effect, Inc. f/s/o	8/23-9/3	\$48,000	Amusements
John & Mary Block (Log Cabin)	8/23-9/3	\$3,800	Heritage	Air-Robics			
Keith Johnson (Blacksmith)	8/23-9/3	\$1,200	Heritage	Minnesota Purebred Dog Breeders Association	8/23-9/3	\$5,500	Dog Exhibit
Live and Kickin'/Greg Kaczor	8/23-8/28	\$3,000	Heritage	W.J. Mackey, DVM	8/21-9/3	\$9,000	Vet Services
Riders In The Sky	8/23-8/28	\$15,300	Heritage	W.H. Sweeney, DVM	8/21-9/3	\$19,000	Vet Services
Wanda Vick DBA Wild Rose	8/23-8/28	\$15,000	Heritage	MN Hobby Beekeepers Assn.	8/23-9/3	\$400	Bee & Honey
Barbary Coast Banjo Brass/Dick Peterson	8/29-9/3	\$7,880	Heritage	African Violet Society of MN	8/23-8/24	\$1,200	Flower & Ag
Chmielewskis	8/29-9/3	\$8,552.50	Heritage	MN State Horticultural Society	8/23-8/24	\$1,200	Flower & Ag
Bonnie Nelson & The Stateside Express	8/29-9/3	\$10,000	Heritage	MN Gladiolus Society	8/25-8/26	\$1,550	Flower & Ag
Briar Patch Cloggers	8/31 & 9/1	Admissions	Heritage	Federated Garden Clubs of MN	8/29-8/30	\$1,550	Flower & Ag
Minnesota Square Dance Federation	8/28 & 9/2	Admissions	Heritage	Orchid Society of MN	8/31-9/1	\$1,200	Flower & Ag
Dynamic Country and Country Classics	8/29 & 9/3	Admissions	Heritage	MN State Bonsai Society	8/31-9/1	\$1,200	Flower & Ag
Royal Sil-O-Ets	8/25 & 26	Admissions	Heritage	MN Dahlia Society	9/2-9/3	\$1,550	Flower & Ag
David Cohan	8/23-9/3	\$7,200	Children's Theater	North Central Florists Assn.	8/23-9/3	\$9,250	Flower & Ag
National Karate Schools	8/23-9/3	\$360	Children's Theater	MN Nurserymen's Assn.	8/23-9/3	\$7,000	Flower & Ag
Teddy Bear Band	8/23-9/3	\$8,000	Children's Theater	MN State Horticultural Society	8/23-9/3	\$2,400	Flower & Ag
Willy Wonka	8/23-8/28	\$4,250	Children's Theater	Minneapolis Farmers Market	8/23-9/3	\$400	Veg. - Potato
David Hamilton	8/29-9/3	\$3,250	Children's Theater	St. Paul Growers Assn.	8/23-9/3	\$400	Veg. - Potato
Vic Hyde	8/23-9/3	\$5,200	Sen. Bldg.	Lillian Colton	8/23-9/3	\$1,000	Farm Crops
Waseca Senior Citizens Band	8/23	Admissions	Sen. Bldg.	Home Economists in Homemaking	8/23-9/3	\$400	Creative Act
Dawn-L	8/23	\$75	Sen. Bldg.	MN Apple Growers Assn.	8/23-9/3	\$900	Fruit
The James Gang	8/24	\$135	Sen. Bldg.	MN Assn. of Meat Processors	8/23-9/3	\$475	Meats
Scandinavian Orkester	8/25	\$415	Sen. Bldg.	Conrad Kvamme	8/23-9/3	\$3,000	Cattle
Lena & Hilda and the Pine Creek Pussy Willows	8/26	Admissions	Sen. Bldg.	Randy Roberts	8/24-9/3	\$1,965	Horse & Rodeo
The Rhythm Kings	8/27	\$200	Sen. Bldg.	Shirley Trimble	8/24-28 & 8/31-9/2	\$150	Horse & Rodeo
Leroy Karg Band	8/28	\$760	Sen. Bldg.	Leon & Vicki Adams	8/24-28 & 8/31-9/2	\$7,347	Horse & Rodeo
The Four Hymns	8/28	Admissions	Sen. Bldg.	Barnes PRCA Rodeo	8/29-8/30	\$26,000	Horse & Rodeo
The Silvertones	8/29	\$35	Sen. Bldg.				
Nordkap Male Chorus	8/24, 29, 31	\$600	Sen. Bldg.				
The Kelley Family	8/30	Admissions	Sen. Bldg.				
Paul & Archie	8/30, 31 & 9/1, 2, 3	\$800	Sen. Bldg.				
Dee Tanner	9/1, 2	\$60	Sen. Bldg.				
T.C. Chorus Sweet Adelines	9/3	Admissions	Sen. Bldg.				
Dennis Johnson/Parade Productions	8/23-9/2	\$2,000 plus \$1,000 due 9/1/90	Parade				
The All-American Judges Association	8/23-9/2	\$1,057	Parade				
John & Mary Block	8/23-9/2	\$2,750	Parade				
University of Minnesota Alumni Band	8/31	\$250	Parade				
Richfield High School	8/23	\$200	Parade				
Winona Senior High	8/23	\$300	Parade				
Eden Prairie High School	8/23	\$200	Parade				
Bayfield High School	8/23	\$500	Parade				
Eden Valley-Watkins High School	8/24	\$200	Parade				
Irondale High School	8/24	\$200	Parade				
Green Lake Public School	8/24	\$600	Parade				
Chatfield High School	8/24	\$300	Parade				
South Central High School	8/25	\$300	Parade				
Owatonna High School	8/25	\$300	Parade				
DeSoto High School	8/25	\$400	Parade				
New Richmond High School	8/25	\$200	Parade				
Waseca High School	8/26	\$300	Parade				
Parkview High School	8/26	\$600	Parade				
Elk Mound High School	8/26	\$400	Parade				
Bloomington-Kennedy High School	8/26	\$200	Parade				
Albert Lea High School	8/27	\$300	Parade				
Ashby High School	8/27	\$400	Parade				
Menahga High School	8/27	\$400	Parade				
Proctor High School	8/27	\$300	Parade				
Red Wing High School	8/28	\$200	Parade				
Lake City High School	8/28	\$200	Parade				
Clintonville High School	8/28	\$600	Parade				
LeCenter High School	8/28	\$200	Parade				
St. James High School	8/29	\$300	Parade				
Jordan High School	8/29	\$200	Parade				
St. Peter High School	8/29	\$200	Parade				
Kasson-Mantorville High School	8/29	\$200	Parade				
Jefferson High School	8/30	\$200	Parade				
Baldwin-Woodville	8/30	\$200	Parade				
Elk River High School	8/30	\$200	Parade				
Gale-Ettrick-Trempealeau High School	8/30	\$400	Parade				
Spring Lake Park High School	8/31	\$200	Parade				
Washburn High School	8/31	\$200	Parade				
Coon Rapids High School	8/31	\$200	Parade				
Anoka High School	9/1	\$200	Parade				
Prairie Farm High School	9/1	\$400	Parade				
Montello High School	9/1	\$600	Parade				
Cameron High School	9/1	\$400	Parade				
Glencoe High School	9/2	\$200	Parade				
Boyceville High School	9/2	\$200	Parade				
Barron High School	9/2	\$400	Parade				
Cathedral High School	9/2	\$300	Parade				

Copies of the legislative audit report, covering the society's 1989 fiscal year, were circulated to the board on Feb. 16. It was moved by Mr. Prokosch, seconded by Mr. Morris and carried that the report be accepted (Aye-9; Nay-0).

Mr. Wenzel presented a video showing construction projects underway on the grounds including 4-H showers, Service Bldg. restrooms, Grandstand seat replacement and Public Safety expansion. No action required on the construction report.

Mr. Pooch referred to a handout concerning the activities of certain animal rights organizations throughout the United States, and pointed out the importance of dealing with these groups in an appropriate, legal manner. He indicated a plan would be formulated among livestock departments, Public Safety and the administration so that demonstrations or other disruptive occurrences might be responded to correctly. No action required on the animal rights report.

Secretary reviewed plans, sketches and budget projections for the proposed Commonwealth Park development, an area immediately south of the Grandstand between Nelson and Liggett. Timetables for funding and construction were discussed. The next stage of this project is preparation of design and construction documents. Preliminary drawings of a new visitor center were also presented and discussed. No action required.

Comprehensive changes and improvements to the fair's senior citizen program were outlined by Mr. Wenzel, including special arrangements for buses at a senior welcome center, as well as date changes, procedures and pricing. No action required on the senior report.

Secretary introduced a status report on the University of Minnesota transitway, a system designed to move students between the St. Paul and Minneapolis campuses in a corridor which near its eastern terminus crosses the fairgrounds. Negotiations intended to accommodate the crossing, exchanges of consideration and an agreement to memorialize the process were characterized by the Secretary as slow and forced, and further that nothing of any consequence was ready for board consideration. No action required on the transitway report.

An agenda call for the next meeting of the board at 10 a.m. Friday, Aug. 24 was moved by Mr. Prokosch, seconded by Mr. Simons and carried (Aye-9; Nay-0).

Mr. Lilliquist reported that he and Mr. Morris had attended the Riverside County National Date Festival in Indio, Calif. during February.

Upon a motion by Mr. Simons, seconded by Mr. Recknor and carried, authority was granted for members of the board to travel outside the state at society expense in order to visit other state and regional fairs held during June, July and August, 1990 (Aye-9; Nay-0).

Adjournment moved by Mr. Prokosch, seconded by Mr. Recknor and carried (Aye-9; Nay-0).

Meeting adjourned.

MINUTES IN VACATION

June

7—Sinclair attended a meeting of the St. Anthony Park Community Council (planning committee).

11-15—The 4-H Junior Leader Conference was held in the 4-H Bldg.

13—Leach, Hammer, Neil Larson and Heffron met with Bill Fisher, regional representative of AC-Delco, to discuss sponsorship arrangements for the Miller 300. Heffron discussed the U of M transit way plan with Representative Dick Kostohyz and House Research Assistant Mark Shepard. Grandstand entertainment announcement made today.

13-17—The state Arabian horse show was staged in the Coliseum.

14-18—Heffron attended an IAFE Industry Relations Committee meeting hosted by the Dade County Youth Fair in Miami.

- 15-17—A gem and mineral show and sale was held in the Education Bldg.
 16-17—A flea market sale was promoted in the Grandstand, East Room and Infield.
 18-20—The State Patrol held a training exercise on the carnival lot.
 19—Bicycle races were run on the streets of Machinery Hill. State Patrol held training exercises in Machinery Hill area and Horse Barn area.
 21—Neil Larson, Leach and Heffron met with Jack Waitkus and Michael Saperton of Video West to discuss video presentation at the Grandstand.
 22-24—The Minnesota Street Rod Show was presented on Machinery Hill using Progress Center and the Campgrounds.
 25—Grandstand phone orders were accepted beginning today.
 26—Heffron met with Susanne Spitzer of the MPCA to discuss traffic and air pollution generated during the fair and other special events. Sinclair met with Margaret Savard, MN Dept. of Agriculture, to discuss that agencies' exhibit plans for the 1990 fair.
 28—Wenzel, Sinclair and Heffron met with Sue Wiley and Linda Bruemmer of the state waste management office to discuss recycling strategies for the fair. Bicycle races were run on the streets of Machinery Hill.
 28-1—The Tanbark horse show was staged in the Coliseum.
 30-1—A firearms show was held in the Grandstand.

July

- 2—Over-the-counter Grandstand ticket sales begin today.
 3—Bicycle races were held on Machinery Hill.
 6-15—Olympic Festival equestrian shows were staged in the Coliseum to near sell-out audiences.
 7-9—Sinclair visited the Calgary Exhibition and Stampede, Calgary, Alberta.
 9—The State Employment Service opened its State Fair branch office in the 4-H Building.
 10—Wenzel, Frenette, Sinclair, Fischler and Heffron met with representatives of Toltz, King, Duvall to review plans for a (proposed) visitors center in Block 30. Wenzel and Heffron met with Gus Donhowe from the U of M to discuss the school's intercampus transit plan. The Executive Committee approved the June 30, 1990 cash transaction summary as follows:

GENERAL FUND ACTIVITY:

Cash Balance-May 31, 1990		\$	75,680
Add: Jun. Cash Deposits	\$ 888,438		
Less: Payroll Ending Jun. 6	(81,859)		
Payroll Ending Jun. 20	(88,154)		
Jun. Cash Disbursements	(480,756)		
Cash Balance-Jun. 30, 1990		\$	313,349

MARKETABLE SECURITIES ACTIVITY:

Balance-May 31, 1990		\$	104,608
Add: Interest Earned	\$ 719		
Less: Service Charges	(22)		
Securities Cashied	(50,000)		
Balance-Jun. 30, 1990		\$	55,305

BUILDING FUND ACTIVITY:

Balance-May 31, 1990		\$	196,689
Add: Interest Earned	\$ 1,351		
Less: Service Charges	(42)		
Balance-Jun. 30, 1990		\$	197,998

CASH BALANCES FOR MONTH ENDING JUNE 30:

	1989	1990
General Fund	\$ 18,817	\$ 313,349
Petty Cash	2,300	2,750
Marketable Securities	4,420	55,305
Building Fund	208,920	197,998
Total Cash Balances	\$ 234,457	\$ 569,402

- 11—Sinclair and Fisher met with representatives of Waste Management to discuss waste recycling procedures at the fair.
 17—An Admissions Dept. meeting was held at the Administration Building.
 18—Frenette and Heffron joined with Terry Pratt of North Star State Bank to attend a meeting with representatives of the Commerce Dept. (Banking Division) relative the establishment of a banking facility at the State Fair.
 20—Sinclair met with C. J. Sedlmayr, III to discuss Carnival operations at the 1990 fair.
 24—Heffron met with vice president Rich Keenan to discuss space rental matters.
 25—Sinclair, Leach and Heffron attended a meeting of the St. Anthony Park Community Council (Environmental Committee) to discuss space rental matters.
 26—Wenzel, Frenette, Sinclair, Fischler and Heffron met with TKDA to review visitor center plans.
 26—Goiffon and Wenzel met with representatives of the Minnesota Federation of County Fairs Board to discuss programs for the 1991 Annual Meeting.
 30—A meeting was held for rental services building and area superintendents.
 31—TKDA made a final presentation on the visitor center to State Fair staff and to representatives of North Star State Bank.

August

- 4-10—Talent contest auditions were held in the Bandshell.
 7—A space rental review meeting was held in the Administration Building (see minutes which follow). The Executive Committee approved the July 31, 1990 cash transaction summary as follows:

GENERAL FUND ACTIVITY:

Cash Balance-Jun. 30, 1990		\$	313,349
Add: Jul. Cash Deposits	\$ 748,140		
Less: Payroll Ending Jul. 3	(120,999)		
Payroll Ending Jul. 17	(96,974)		
Jul. Cash Disbursements	(810,597)		
Cash Balance-Jul. 31, 1990		\$	32,919

MARKETABLE SECURITIES ACTIVITY:

Balance-Jun. 30, 1990		\$	55,305
Add: Interest Earned	\$ 558		
Securities Purchased	300,000		
Less: Service Charges	(17)		
Balance-Jul. 31, 1990		\$	355,846

BUILDING FUND ACTIVITY:

Balance-Jun. 30, 1990		\$	197,998
Add: Interest Earned	\$ 1,324		
Less: Service Charges	(40)		
Balance-Jul. 31, 1990		\$	199,282

CASH BALANCES FOR MONTH ENDING JULY 31:

	1989	1990
General Fund	\$ 266,525	\$ 32,919
Petty Cash	2,300	3,250
Marketable Securities	4,454	355,846
Building Fund	210,116	199,282
Total Cash Balances	\$ 483,395	\$ 591,297

13—Heffron met with Len Bonander of Americana Fireworks to discuss the '90 Grandstand fireworks presentation. Staff members, including Wenzel, Sinclair, Rustad, Blakey and Heffron, conducted an information meeting for State Fair beer concessionaires.

15—Campgrounds opened today.

16—A final before fair staff meeting was held; M.R. Bolin representatives presented an overview of the '90 advertising campaign; Mike Kirch showed the new employee training video.

20—Sinclair introduced a program regarding the carnival industry to the Roseville Rotary Club. C.J. Sedlmayr, III of Royal American Shows made a presentation on the subject.

21—Rehearsals were conducted by Ray Komischke (Bandshell Orchestra) and by the Air-Robics troupe (Amphitheater). A special fine arts preview was held at the Arts Center.

22—The Princess Kay coronation, sponsored by the Minnesota ADA was held in the Bandshell. Preliminary English horse show events were staged in the Coliseum. Sinclair participated in an orientation/information session presented to Royal American shows staff by Royal American principals and John Rogers of Gill & Associates, Inc. ...amusement industry safety consultants/inspectors.

23—The 1990 Minnesota State Fair opened to the public at 6 a.m. Special opening day ceremonies, hosted by Society president Bill Korff were held in the Bandshell at 10 a.m.

SPACE RENTAL COMMITTEE MEETING MINNESOTA STATE AGRICULTURAL SOCIETY

Administration Building, State Fairgrounds
 Tuesday, August 7, 1990 — 9:30 a.m.

Members present: Keenan, chairman; Lund; Prokosch; Roehlke; Simons; Korff, ex officio; Heffron, ex officio; Wenzel, ex officio; Sinclair, ex officio.

Also present: Sherry Enzler, Jim Donnelly and Rochelle Rustad.

Chairman Keenan called the meeting to order at 9:30 a.m. and requested that Sinclair briefly review the agenda.

Sinclair followed by presenting a request from Vance E. Anderson on behalf of his company, The Flight Center, for review of earlier staff action denying his application to sell kites, frisbees, boomerangs, t-shirts and other flying game objects at the fair. Following explanation by Sinclair that staff's earlier action had been based on the fact that other concession outlets for similar products already existed at the fair, it was moved by Mr. Simons, seconded by Mrs. Roehlke and carried that staff action be supported in view of the wish to avoid placement of further outlets for like products with the large number of applications received for products and services which are unrepresented in any manner (Aye-4; Nay-0).

Mr. David Addis appeared before the committee requesting that he be placed in the same lower Grandstand concession space in '90 as he was assigned last year or alternative space on the first floor, rather than the spaces to which he had been assigned for the 1990 fair on the Grandstand second floor. Mr. Addis indicated that he did not receive his mail in order to reapply in a timely manner resulting in his former concession space being reassigned to another space applicant. On a motion by Mr. Prokosch, seconded by Mr. Simons and carried, staff was asked to consider movement of Mr. Addis' concession to the first floor of the Grandstand, should space appropriate to its placement become available between this date and the 1990 fair (Aye-4; Nay-0).

Earlier staff action denying the application of Bryan Medley to sell curly fry potatoes at the 1990 fair based on the late date of application receipt and concerns related to duplication of like products already offered by other concessionaires at the fair was supported on a motion by Mr. Simons, seconded by Mrs. Roehlke and carried (Aye-4; Nay-0).

Medley Concessions, represented by Betsy Medley, appeared to request review of their concession space application to sell crepes at the 1990 fair which had previously been denied by staff based on lack of sufficient space at the fair to place further food and beverage concessions. Such physical space constraints lead to support of staff action by the committee. Moved by Mrs. Roehlke, seconded by Mr. Prokosch and carried (Aye-4; Nay-0).

Mr. Erik Ahlgren appeared before the committee to request that the staff decision disallowing complimentary distribution of helium balloons by the Wellstone for Senate campaign be overturned on the basis of concerns related to first amendment freedoms of commercial and political speech. Mrs. Enzler opined that the staff decision would stand if given first amendment legal test because it was "content neutral" and the fair had valid concerns regarding the level of availability of balloon products at the fair and the impact free distribution of such products would have on concessionaires who had paid for the privilege of selling same. Mr. Ahlgren related concerns regarding the extent of exposure the planned presentation would receive in the location assigned and alluded to desires on behalf of the campaign to maximize same, to which the committee responded with affirmation of earlier staff action in support of fair policy requiring conduct of a concessionaire or exhibitor's activities from within the confines of assigned space. Moved by Mr. Simons, seconded by Mr. Prokosch and carried (Aye-4; Nay-0).

Sinclair presented space application materials on behalf of Nationwide Marketing, Inc., along with correspondence requesting review of the earlier staff decision denying same. Sinclair indicated that denial had been based on the fact that existing concessions at the fair already presented the same and similar products and the staff did not wish to further duplicate like products with the number of applications in hand for new and unrepresented products and services. It was moved by Mr. Simons, seconded by Mr. Prokosch and carried that staff action be affirmed (Aye-4; Nay-0).

On behalf of Rafiki International Imports, Sinclair introduced correspondence and application materials submitted by Mr. Solomon S. Mathenge requesting committee consideration of his request for concession space in the Bazaar. Sinclair indicated that Mr. Mathenge had not been offered the opportunity to reapply for concession space based on his late set up in 1989, as well as the inferior quality of products and display presented by Mr. Mathenge in the past and his failure to show marked improvement in these areas despite prior correspondence in this regard. Staff action was supported for the reasons stated on a motion by Mr. Simons, seconded by Mrs. Roehlke and carried (Aye-4; Nay-0).

It was moved by Mr. Lund, seconded by Mrs. Roehlke and carried that transfer of the food and beverage concession structure owned by Lowell E. Riewe located on lot Q in block 36 to Elton C. Dahlke be approved with the understanding by all parties involved that such action provided no future assurance of right to transfer by Mr. Dahlke (Aye-4; Nay-0).

The exhibit structure located on lot 19 in block 31 belonging to EcoWater Systems, Inc. was approved for transfer to Fireside Corner, Inc. with the understanding by all parties involved that such action conveyed no assurance of future right to transfer by Fireside Corner, Inc. (Aye-4; Nay-0).

Meeting adjourned.

MEETING OF THE GOVERNING BOARD MINNESOTA STATE AGRICULTURAL SOCIETY

Administration Building
Friday, August 24, 1990 — 10 a.m.

Members present: Bill Korff, president; Rich Keenan; Don Simons; Eileen Roehlke; Howard Morris; Howard Recknor; Martin Annexstad; Vern Prokosch; Bert Lund; Willis Lilliquist; Mike Heffron, secretary.

Also present: Sherry Enzler.

President Korff opened the meeting by welcoming all members to the 1990 Minnesota State Fair.

Upon a motion by Mr. Lund, seconded by Mr. Keenan and carried, minutes of the June 7, 1990 board and space rental committee meeting(s), previously mailed to the members, were approved (Aye-9; Nay-0).

Minutes of the space rental review meeting, held August 7, 1990, were approved on a motion by Mr. Keenan, seconded by Mr. Lund and carried.

Copies of the minutes in vacation, covering the period June 7 through August 23, 1990, as well as the administrative action noted therein, were approved on a motion by Mr. Morris, seconded by Mr. Annexstad and carried (Aye-9; Nay-0).

Secretary presented the July 31, 1990 society financial statement as follows:

GENERAL FUND ACTIVITY:

Cash Balance-Jun. 30, 1990		\$	313,349
Add: Jul. Cash Deposits	\$ 748,140		
Less: Payroll Ending Jul. 3	(120,999)		
Payroll Ending Jul. 17	(96,974)		
Jul. Cash Disbursements	(810,597)		(280,430)
Cash Balance-Jul. 31, 1990		\$	32,919

MARKETABLE SECURITIES ACTIVITY:

Balance-Jun. 30, 1990		\$	55,305
Add: Interest Earned	\$ 558		
Securities Purchased	300,000		
Less: Service Charges	(17)		300,541
Balance-Jul. 31, 1990		\$	355,846

BUILDING FUND ACTIVITY:

Balance-Jun. 30, 1990		\$	197,998
Add: Interest Earned	\$ 1,324		
Less: Service Charges	(40)		1,284
Balance-Jul. 31, 1990		\$	199,282

CASH BALANCES FOR MONTH ENDING JULY 31:

	1989	1990
General Fund	\$ 266,525	\$ 32,919
Petty Cash	2,300	3,250
Marketable Securities	4,454	355,846
Building Fund	210,116	199,282
Total Cash Balances	\$ 483,395	\$ 591,297

Upon a motion by Mr. Keenan, seconded by Ms. Roehlke and carried, the financial statement of July 31, 1990 was approved (Aye-9; Nay-0).

Secretary was authorized to make miscellaneous ticket refunds and/or payment of minor claims as he deems appropriate upon a motion by Mr. Simons, seconded by Mr. Prokosch and carried (Aye-9; Nay-0).

Upon a motion by Mr. Annexstad, seconded by Mr. Lilliquist and carried, authority was granted for President Korff to travel to Kansas City at Society expense to receive the FFA national honorary farmer degree award (Aye-9; Nay-0).

Secretary announced that the annual trade association convention of the International Association of Fairs & Expositions would be held at the Bally Grand Hotel, Las Vegas, Nov. 26-29, 1990. It was moved by Mr. Prokosch, seconded by Mr. Recknor and carried that members of the board and certain administrative personnel as designated by the secretary be authorized to attend the IAFE convention with society to pay appropriate expenses (Aye-9; Nay-0).

A list of entertainment contracts, not available for approval on 6-7-90, were submitted by secretary. Upon a motion by Mr. Keenan, seconded by Mr. Lund and carried, the following contracts were approved (Aye-9; Nay-0):

CONTRATOR	DATES	TERMS	VENUE
Video West Addendum	8/23-9/3	\$5,000	Grandstand
The Simpsons	8/23	\$5,000	Grandstand
Richard Marx	8/24	\$63,000 plus 80% over \$110,000 plus \$12,000 production	Grandstand
Wilson Phillips	8/24	\$5,000	Grandstand
Bob Dylan	8/29	\$117,250 plus 90% over \$155,000 plus \$250 plus \$7,500 production	Grandstand
George Strait	8/31	\$40,000 plus 75% over \$78,900 plus \$6,400 production	Grandstand
Billy Joe Royal	8/31	\$7,500	Grandstand
Marshall Tucker Band	9/1	\$5,000	Grandstand
American Speed Assn.	9/3	\$75,100	Grandstand
Chris Economaki	9/3	\$1,000	Grandstand
Butch Miller	9/3	\$4,000	Grandstand
Dick Trickle	9/3	\$5,000	Grandstand
Rusty Wallace	9/3	\$5,000	Grandstand
Jack Albinson	9/3	\$150	Grandstand
MN National Guard	8/23	Admissions	Bandshell
Bobby Dale	8/23-9/3	\$2,700	Bandshell
John Mons	8/23-9/3	\$1,600	Bandshell
Ray Komischke	8/23-9/3	\$56,919.15	Bandshell
Stephanie Hendrichs	8/23-9/3	\$1,200	Bandshell
Jennifer Armour	9/3	\$50	Bandshell
Therese Cosgrove	8/23-9/3	\$225	Bandshell
Jamie Cassidy	8/23-9/3	\$225	Bandshell
Skyway Tent Rental (Dance Area)	8/22-9/4	\$629.64	Heritage
Polka Dance Group	8/23	Admissions	Heritage
Grantsburg Polka Band	8/25	\$200	Parade
Worthington High School	8/29	\$400	Parade
Faribault High School	8/31	\$200	Parade
Twin City Unicycle Club	8/25	\$100	Parade
Corky Nelson	9/1	\$100	Parade
Jack Pixley	8/23-25-26 31-9/1-2	\$300	Parade
O. C. Mangold	8/23-9/2	\$925	Parade
Jack Saxon	8/23-9/2	Admissions	Parade
Jake Jordan	8/24-25-26 30-31-9/1-2	Admissions	Parade
Kris Jansen - Antique Highway Patrol	8/23-24	Admissions	Parade
Greg Auge - Winter Carnival Royalty	8/29	Admissions	Parade
Kathy Magnuson 4-H Clowns	9/2	Admissions	Parade
Art Widerstrom DNR Forestry	8/23-9/2	Admissions	Parade
Carol Stufflebeam	8/28	Admissions	Parade
4-H Pom Pom Squad			
Reginald Johnson - Roosevelt High School Marchers	8/24	Admissions	Parade
David Ehrlich	8/23-9/2	Admissions	Parade
Ann Hersmann	8/26	\$50	Milk Run
Maurice Grogan	8/26	\$150	Cattle
Harold Arnenman	8/23-9/3	\$1,000	Hrs. - Rodeo
Weaver's Guild of MN	8/23-9/3	\$350	Crea - Act.

Changes:

Julie Snouffer - Contract amount changed from \$3,600 to \$3,900 as additional shows (Simpsons) were added to Grandstand.

The Beach Boys - Split point was raised from \$165,000 to \$170,000 to cover cost of opening act (Marshall Tucker Band)

U of M Alumni Band - Change of appearance date to August 26

Cancellations:

South Central High School
Parkview High School
Kasson-Mantorville High School
Elk River High School
Coon Rapids High School
Meeting adjourned.

LIFE MEMBER ADVISORY COMMITTEE MEETING

Administration Building, State Fairgrounds
Sunday, August 26, 1990 — 1:30 p.m.

Members present: Sulo Ojakangas, chairman; Gerald Franke; Birney Wilkins; Deke Gussendorf; Harveydale Maruska; Gale Frost; Leo Keskinen; Mike Heffron, ex officio; Jim Sinclair, ex officio (secretary).

The meeting was called to order by chairman Ojakangas at 1:40 p.m.

Motion was entertained for recommendations to the Hall of Fame. Mr. Frost placed in nomination the name of Arthur Johnson, service department timekeeper. Heffron summarized the original intent of the Hall of Fame...to recognize persons who have contributed to agriculture through the State Fair. It was moved by Mr. Gussendorf, seconded by Mr. Maruska and carried that Mr. Harold Thomforde, long time poultry department superintendent, be recommended for Hall of Fame membership.

Heffron reviewed State Fair park and ride programs, as well as discussions underway regarding the University of Minnesota Transitway and interest in acquiring land adjacent to the State Fairgrounds held by the university.

It was moved by Mr. Franke, seconded by Mr. Frost and carried that state fair staff be congratulated on efforts to computerize State Fair operations and encouraged to continue same.

Heffron reviewed the legislature approved sales tax matching program to generate funds for capital improvements.

On a motion by Mr. Franke, seconded by Mr. Frost and carried, the meeting was adjourned at 2:15 p.m.

PLANNING AND UTILIZATION COMMITTEE MEETING

Administration Building
Friday, August 31, 1990 — 9:30 p.m.

Members present: Bert Lund, chairman; Willis Lilliquist; Vern Prokosch; Rich Keenan; Don Simons; Bill Korff, ex officio; Mike Heffron, ex officio; Ken Wenzel, ex officio; Rick Frenette, ex officio.

Also present: Martin Annexstad.

After a detailed presentation and discussion, it was moved by Mr. Simons, seconded by Mr. Prokosch and carried that a committee report be put before the board recommending that staff proceed with the following projects this fall (Aye-4; Nay-0):

Structure Improvements:	
Replace Greenhouse boiler room and potting room (462)	\$87,000
Coliseum meeting room (501)	38,000
Continue Cattle Barn window replacement (511)	30,000
Land Improvements:	
New hydrant (Block 40)	15,000
Land Maintenance:	
Sealcoat Randall (Underwood to Snelling)	12,000
Sealcoat Chambers and Stevens	4,000
Electric Plant Maintenance:	
Complete transformer oil change	20,000
	<hr/> \$206,000

A further recommendation that plans, specifications and cost estimates be prepared on the (proposed) Visitors' Center (Block 30) was approved on a motion by Mr. Lilliquist, seconded by Mr. Keenan and carried. The motion includes authority for staff to initiate a loan from North Star State Bank and for construction to proceed as quickly as possible (Aye-4; Nay-0).

Meeting adjourned.

MEETING OF THE GOVERNING BOARD MINNESOTA STATE AGRICULTURAL SOCIETY

Administration Building
Saturday, September 1, 1990 — 10 a.m.

Members present: Bill Korff, president; Martin Annexstad; Rich Keenan; Vern Prokosch; Willis Lilliquist; Howard Morris; Bert Lund; Eileen Roehlke; Don Simons; Howard Recknor; Mike Heffron, secretary.

Also present: Sherry Enzler; Ken Wenzel; Jim Sinclair; Steve Pooch; Rick Frenette; Rochelle Rustad.

Upon a motion by Mr. Lund, seconded by Mr. Recknor and carried, minutes of the August 24 board meeting were approved (Aye-9; Nay-0).

After discussion, it was moved by Mr. Keenan, seconded by Mr. Prokosch and carried that staff be authorized to negotiate and finalize a new four-year agreement with Royal American Shows, Inc. for the provision of carnival attractions (Aye-9; Nay-0).

A discussion was undertaken of fair-week events in the Coliseum, particularly English and Western horse shows, draft horse events and rodeo. Mr. Pooch explained how the schedule was regularly evaluated on the basis of AHSA as well as other breed association requirements, how it was balanced to create a show presentation for the public and how the various segments of the program were fit together into a very tight alignment over the 12 days of the fair. As regards the question of declining attendance, secretary reminded the board that their own policy over the years was to consider the facility (first) as an important part of the livestock exhibit complex and (second) as a profit center. He added that changes were being considered to improve public interest, but that options were limited by the availability and cost of compatible attractions and by other competing events. Mr. Pooch and secretary were asked to share with the board, when available, an assessment of Coliseum programming and pricing.

It was moved by Mr. Lilliquist, seconded by Mr. Prokosch and carried to adopt the report of the life member advisory committee, filed with the secretary on Aug. 26, 1990 (see previous committee minutes), which report recommends the induction of Harold Thomforde into the Society's Hall of Fame (Aye-9; Nay-0).

Mr. Lund and secretary presented a report of planning committee recommendations made pursuant to a meeting of that committee held Aug. 31, 1990 (see previous minutes). It was moved by Mr. Lund, seconded by Mr. Lilliquist and carried that the report be approved, that the outlined work be undertaken and that the administration

be authorized to initiate a loan from North Star State Bank to cover construction of the proposed visitors center (Aye-9; Nay-0).

It was moved by Mr. Prokosch, seconded by Mr. Lund and carried that a space rental refund of \$2,500 be made to the Church of the Epiphany, whose dining hall concession operation was interrupted by fire on Aug. 28, 1990 (Aye-9; Nay-0).

Secretary circulated a revised departmental payroll schedule updating information provided in June. No action required.

It was moved by Mr. Lund, seconded by Mr. Annexstad and carried that the dates of the 1991 Minnesota State Fair be Thursday, Aug. 22 through Labor Day, Monday, Sept. 2 (Aye-9; Nay-0).

After discussion, Mr. Korff set an agenda date for the next meeting of the board for 10 a.m. Monday, Nov. 5 (Aye-0; Nay-0).

Upon a motion by Mr. Lilliquist, seconded by Mr. Annexstad and carried, authority was granted for members of the board to travel outside the state at Society expense in order to visit other fairs held during September and October, 1990 (Aye-9; Nay-0).

Meeting adjourned.

MINUTES IN VACATION

August

23—September 3 - Visitors from other expositions and special guests at the 1990 Minnesota State Fair included: Steve Eckerson, Eastern States Exposition, W. Springfield, Mass; Elmer Denning, Kansas State Fair, Hutchinson, Kans.; Sue Applegate, Del Mar Fair, Del Mar, Calif.; Paul Rosenberg, Calgary Stampede, Calgary, Alberta; Tim O'Brien, Amusement Business Magazine, Nashville, Tenn.; Tom Atkins, Thomas Shows, Austin, Tex.; Frank Ross, Florida State Fair, Tampa, Fla.

24—Horse exhibitors were hosted at a reception in the Coliseum.

25—The board of the Minnesota Federation of County Fairs held a meeting in the Administration Building Conference room and were hosted at a noon luncheon in the officers headquarters.

26—A special reunion luncheon welcoming Life and Hall of Fame members of the society, was held in the officers headquarters. A meeting of the life members advisory committee was convened during the afternoon at the Administration Building.

27—A recognition and awards ceremony was held for 50-year fair participants at Heritage Square.

30—The Minnesota Livestock Breeders Association board attended a breakfast meeting with society board and staff to discuss livestock competition at the State Fair. Outstanding senior citizen awards for 1990 were presented by Governor Rudy Perpich at a special ceremony in the Bandshell. An informal picnic was held in the Grandstand infield to honor editors, mayors, legislators, county fair and chamber executives from throughout the state. After dinner, the group was hosted at the evening Grandstand show featuring Roger Whittaker.

31—Representatives of various agricultural organizations, including farm equipment association members and dealers, as well as Minnesota Twins owner Carl Pohlad and the executive staff of the Twins, were welcomed by the board at an "Agricultural Awareness" luncheon.

September

3—A short fireworks presentation at 8 p.m. signaled the end of the 1990 State Fair. Official attendance recorded for the 12 days was 1,528,688.

6—Heffron met with Larry Carlson (Ramsey County Solid Waste) and Jim Gaughan (Minnesota Pollution Control Agency) to discuss regulatory jurisdiction over the fair's waste transfer station. Wenzel, Fischler, Armstrong and Heffron met with Sherry Enzler to review contracts covering seat installation in the Grandstand.

10—Executive Committee approved the August 31, 1990 cash transaction summary as follows:

GENERAL FUND ACTIVITY:

Cash Balance-Jul. 31, 1990		\$ 32,919
Add: Aug. Cash Deposits	\$ 5,553,507	
Less: Payroll Ending Aug. 1	(103,181)	
Payroll Ending Aug. 15	(108,925)	
Payroll Ending Aug. 29	(159,294)	
Aug. Cash Disbursements	(1,670,712)	3,511,395
Cash Balance-Aug. 31, 1990		\$ 3,544,314

MARKETABLE SECURITIES ACTIVITY:

Balance-Jul. 31, 1990		\$ 355,846
Add: Interest Earned	\$ 1,372	
Less: Service Charges	(43)	
Securities Cashed	(150,000)	(148,671)
Balance-Aug. 31, 1990		\$ 207,175

BUILDING FUND ACTIVITY:

Balance-Jul. 31, 1990		\$ 199,282
Add: Interest Earned	\$ 1,370	
Less: Service Charges	(43)	1,327
Balance-Aug. 31, 1990		\$ 200,609

CASH BALANCES FOR MONTH ENDING AUGUST 31:

	1989	1990
General Fund	\$ 2,757,807	\$ 3,544,314
Petty Cash	2,600	3,450
Marketable Securities	4,488	207,175
Building Fund	211,691	200,609
Total Cash Balances	\$ 2,976,586	\$ 3,955,548

12-16—Heffron attended the Kansas State Fair, Hutchinson, and the National Dairy Cattle Congress, Waterloo, Iowa. While in Hutchinson, Heffron spoke at a meeting of the Chamber of Commerce.

13-16—A North Country Ski Sale was held in the Progress Center.

15-17—The annual 4-H horse show was staged in the Coliseum.

17—Steve Pooch attended a meeting of the Falcon Heights Planning Commission.

18—Helen Franke, wife of Life Member Jerry Franke, died after a short illness. Sinclair and Heffron met with State Senator Greg Dahl to discuss ride inspection legislation and other carnival safety issues.

18-Nov. 18—In Town Apple Store held its annual apple sale in the Sentinel Building.

19—Wenzel, Fischler and Heffron, along with Warren Wunderlick from Toltz, King, Duvall, attended a meeting with the staff of the State Building Codes Division to discuss application of the code to Society buildings.

20-21—President Korff and board member Lillquist attended the State Fair of Oklahoma in Oklahoma City.

21—Several members of the staff, including Wenzel, Frost, Pooch and Heffron, attended Helen Franke's funeral.

21-23—Fall Sportacular (baseball card) show was held in Modern Living. A Country Folk Art Show was staged in the Grandstand. The Western Saddle Horse Show was contested in the Coliseum. A (second) North Country Ski Sale was held in the Education Building.

21-29—A pumpkin sale was held in the Seed & Grain Building.

24—Frenette attended a meeting of the Falcon Heights Planning Commission.

27—Goiffon, Wenzel met with representatives of the Federation of County Fairs to finalize annual meeting plans.

28-30—An Arabian horse show was staged in the Coliseum. A woodworking show was held in the Empire Commons.

29—A model railroad sale was offered in the Education Building. The District 10 Community Council held its annual fall cleanup and was allowed use of Blocks 8 & 9 as a collection point.

29-30—The Midwest Auto Show and Swap was held in the Infield.

October

1—Wenzel met with representatives of the Red Cross to evaluate the 1990 Medical Aid program at the fair.

2—A special meeting to review and discuss changes in space rental rules was attended by Kent Harbison, Rich Keenan, Sherry Enzler, along with Sinclair, Wenzel and Heffron. An evaluation meeting was held with Admissions Department supervisory personnel.

2-7—The Minnesota Fall Horse Show was held in the Coliseum.

3—Wenzel and Heffron attended a Light Rail Advisory Committee meeting at the St. Anthony Park Library.

4—Staff met with representatives of Toltz, King, Duvall to review plans for the proposed visitors center. Sinclair attended a meeting of the St. Anthony Park Planning Committee.

5—Ohlhauser and Sinclair met with Karen Tobiason, Farm Equip. Association of MN and the Dakotas; Margaret Savard, MN Dept. of Ag.; Betty Piper, MN Twins and Ginger Cisco, WCCO Radio to review and discuss the Fair/Twins Ag Awareness promotion.

5-8—Frost and Leach attended Country Music Association SRO-90 and ICMBA meeting in Nashville, Tenn.

6—Junior League garage sale was held in the Education Building.

6-7—A Prime Promotions flea market was staged in the Infield. A military collectors show and sale was held at Empire Commons.

8—Giannini, Ritt and Hammer met with staff of M.R. Bolin to discuss '91 ad theme.

10—Sinclair and Wenzel met with Father Bernard Reiser of Epiphany Church to go over building plans for the 1991 fair. Executive Committee approved the Sept. 30, 1990 cash transaction summary as follows:

GENERAL FUND ACTIVITY:

Cash Balance-Aug. 31, 1990		\$ 3,544,314
Add: Sep. Cash Deposits	\$ 2,998,429	
Less: Payroll Ending Sep. 12	(210,658)	
Payroll Ending Sep. 26	(76,710)	
Fair Period Payroll	(1,033,835)	
Sep. Cash Disbursements	(4,685,735)	(3,008,509)
Cash Balance-Sep. 30, 1990		\$ 535,805

MARKETABLE SECURITIES ACTIVITY:

Balance-Aug. 31, 1990		\$ 207,175
Add: Interest Earned	\$ 1,701	
Securities Purchased	2,000,000	
Less: Service Charges	(53)	2,001,648
Balance-Sep. 30, 1990		\$ 2,208,823

BUILDING FUND ACTIVITY:

Balance-Aug. 31, 1990		\$ 200,609
Add: Interest Earned	\$ 1,362	
Less: Service Charges	(43)	1,319
Balance-Sep. 30, 1990		\$ 201,928

CASH BALANCE FOR MONTH ENDING SEPTEMBER 30:

	1989	1990
General Fund	\$ 328,690	\$ 535,805
Petty Cash	650	500

Marketable Securities	2,004,522	2,208,823
Building Fund	213,224	201,928
Total Cash Balances	\$ 2,547,086	\$ 2,947,056

11—MNDOT sponsored a truck rodeo on the Carnival Lot. Ritt, Giannini and Hammer met with representatives of Gedney Pickle to discuss promotion possibilities.

13—The District 14 Community Council held its annual fall cleanup and was allowed use of Block 53 as a collection point.

15—Pooch attended and spoke at Tri-State Horseman's Association meeting at the Steak & Ale in Roseville. Hammer met with Karl Hawes of Happenings, Inc. to discuss the '90 discount coupon book promotion.

16—Hammer, Ritt, Giannini and Heffron attended a luncheon hosted by Bolin Advertising.

17—Heffron attended a Light Rail Committee meeting at the St. Anthony Park Library.

17-28—Wilson Leather Sale was held in Empire Commons.

18—Heffron met with Life Member Harveydale Maruska to discuss procedures for the annual meeting. A Snapper Lawn Mower demonstration was held in Block 23.

19—Sinclair met with representatives of the U.S. Postal Service to discuss plans for the Fair's Visitor Center.

20-24—Frenette and Sinclair attended the State Fair of Texas, Dallas and Louisiana State Fair, Shreveport.

23—Wenzel, Heffron and Art Blakey met with Lt. Les Benson and Sgt. Brook Shaub of the St. Paul Police Dept. to discuss traffic management during fair-week.

26-28—Hammer participated in an IAFE communications award judging at the association's office in Springfield, Mo.

27—St. Paul Police held a training exercise on Machinery Hill.

30—Wenzel and Heffron met with representatives of the St. Paul Fire Department to discuss renewal of a fire services contract.

30-31—A high speed pursuit training session was held on the Carnival Lot.

SPACE RENTAL COMMITTEE MEETING MINNESOTA STATE AGRICULTURAL SOCIETY

Administration Building, State Fairgrounds
Monday, November 5, 1990 — 9:30 a.m.

Members present: Keenan, chairman; Morris, Prokosch; Roehlke; Simons; Korff, ex officio; Heffron, ex officio; Wenzel, ex officio; Sinclair, ex officio.

Also present: Annexstad; Lillquist; Recknor; Rick Frenette; Rochelle Rustad; Jim Frost; Jerry Hammer; Karen Leach; Sherry Enzler and Jim Donnelly.

The meeting was called to order by Mr. Keenan at 9:35 a.m.

A written report of rental services division revenues for the 1990 fair was presented by Sinclair for review by the committee. (See report resume.) No action necessary.

Sinclair distributed a written progress report on phases 1 and 2 of the concession divestiture procedures initiated in 1989 and 1990, respectively. (See inserted report.) No action necessary.

A proposal for revision of space rental rates covering all contract categories was presented by Mr. Sinclair. Following discussion, it was moved by Mr. Simons, seconded by Mr. Prokosch and carried to approve the following schedule (Aye-5; Nay-0):

Concessions - increase from \$52 to \$62 per front foot; Food/Beverage concessions - 10% of gross receipts, after tax; Exhibits - increase from \$43 to \$55 per front foot; Institutional Exhibits - increase from \$28 to \$31 per front foot; Machinery Hill exhibit lots - increase from \$100 to \$110 for each of the first two (2) lots and from \$40 to \$50 for each lot thereafter; Progress Center and Empire Commons - increase from \$12 to \$15 per front foot; Ag-Hort. Building exhibits - increase from \$200 to \$220 per 12' x 8' space; livestock barn area exhibits (along Judson Ave.) - blk. 41 (west of the Horse Barn entrance) increase from \$5 to \$7 per front foot; blk. 41 (east of the Horse Barn entrance) increase from \$10 to \$12 per front foot; blk. 42 increase from \$12 to \$15 per front foot; blk. 50 increase from \$10 to \$15 per front foot; blk. 51 increase from \$5 to \$7 per front foot; carnival concessions - increase from \$57 per front foot (3,000 foot limit) to \$70 per front foot (2,000 foot limit).

On a motion by Mr. Prokosch, seconded by Mr. Morris and carried, the committee ordered the prohibition of sales of all tobacco products at the Minnesota State Fair beginning in 1992 (Aye-4; Nay-1).

A report of carnival revenues (1979 - 1990) was presented for committee consideration. (See attached report.) No action necessary.

Meeting adjourned.

MEETING OF THE GOVERNING BOARD MINNESOTA STATE AGRICULTURAL SOCIETY

Administration Building
November 5, 1990 — 10:00 a.m.

Members present: Bill Korff, president; Eileen Roehlke; Howard Morris; Howard Recknor; Martin Annexstad; Don Simons; Richard Keenan; Vern Prokosch; Willis Lillquist; Mike Heffron, secretary. Absent: Bert Lund.

Also present: Ken Wenzel; Jim Sinclair; Jim Frost; Jim Donnelly; Rick Frenette; Rochelle Rustad; Jerry Hammer; Karen Leach; Sherry Enzler.

Mr. Korff called the meeting to order at 10:48 a.m.

Motion by Mr. Morris, seconded by Mr. Annexstad and carried that board and committee minutes, recorded during the 1990 fair, be approved as submitted to the members by mail (Aye-8; Nay-0).

Minutes in vacation covering the period Aug. 23 through Oct. 31, 1990, and the administrative action noted therein, were approved on a motion by Mr. Annexstad, seconded by Mr. Prokosch and carried (Aye-8; Nay-0).

A preliminary, unadjusted version of the society's year-end income and expense statement was presented by Mr. Frenette along with a cash balance resume for Oct. 31, 1990. For information only; no action required.

Approval of action taken by the space rental committee earlier in the day (Nov. 5) was moved by Mr. Keenan, seconded by Mr. Simons and carried (Aye-8; Nay-0).

Secretary reviewed two legislative matters—the first, an initiative which would better define the relationship between the society and the State Department of Administration as regards building codes and contracts; and the second, having to do with ride safety and ride inspections. For information only; no action required.

Mr. Frenette presented a schedule describing activity in the society's building fund during 1990. Said report, which shows an opening balance of \$189,083, authorized expenditures, sales tax, matching deposits and a closing balance of \$516,870 (as below) was approved on a motion by Mr. Annexstad, seconded by Ms. Roehlke and carried (Aye-8; Nay-0):

MINNESOTA STATE FAIR BUILDING FUND REPORT

DATE	DESCRIPTION	UNRESTRICTED + / (-)	RESTRICTED + / (-)	TOTAL FUND BALANCE
11/01/89	Beginning Balance			\$189,083
*01/15/90	Release to unrestricted board minutes, pg. 15-90	\$438,000	\$(438,000)	189,083
10/29/90	Deposit 1990 forgone sales tax liability		375,000	564,083
10/29/90	Deposit 1990 MSF matching funds		375,000	939,083
10/30/90	Transfer unrestricted to cash funds	(438,000)		501,083
10/31/90	1990 Interest income		16,285	517,368
10/31/90	1990 Investment fees		(498)	516,870

* Assign building fund to:

(1) Replace 3 sections of Grandstand seats	\$ 175,000
(2) Upgrade Service Building restrooms	80,000
(3) Replace Food Building roof	100,000
(4) Enlarge Public Safety Building	83,000
Total	\$ 438,000

It was moved by Mr. Simons, seconded by Mr. Lilliquist and carried that secretary be authorized to enter into contracts with acts and attractions for the 1991 fair (Aye-8; Nay-0).

Secretary discussed with the board an alternative method of handling vehicle parking under which automobiles carrying fewer than four people would be charged a parking fee upon entering the fairgrounds. If initiated, the new procedure would generate funds which, in turn, would allow the waiver of bus fees currently being paid by those who park in satellite lots. This program is currently under study; a recommendation will be forthcoming in January.

Following a presentation by Mr. Hammer, it was moved by Mr. Lilliquist, seconded by Mr. Recknor and carried that the following advertising policy be followed in 1991: "The State Fair's basic advertising outlets shall be all daily and weekly newspapers in Minnesota as well as broadcast outlets selected from the state's radio and television stations, plus selected newspapers and radio and television stations in surrounding states." Included in the motion was approval of a 1991 advertising agency contract with the M.R. Bolin firm (Aye-8; Nay-0).

A review of fair-week payrolls was undertaken, after which it was moved by Mr. Prokosch, seconded by Mr. Annexstad and carried that the submitted payroll summary totaling \$1,081,395 be approved (Aye-8; Nay-0).

It was moved by Mr. Simons, seconded by Mr. Prokosch and carried that the following Grandstand and Coliseum tickets be transferred to non-pay status (Aye-8; Nay-0):

GRANDSTAND

8-23	Barbara Mandrell, T.G. Sheppard	7:30 p.m.	25 @ \$11.00 Contract Provision
8-24	Richard Marx, Wilson Phillips	7:30 p.m.	182 @ \$12.00 Contract Provision
8-25	Bill Cosby	7:30 p.m.	10 @ \$12.00 Contract Provision
8-26	Randy Travis, Alan Jackson	7:30 p.m.	41 @ \$12.00 Contract Provision
8-27	Bonnie Raitt, The Jeff Healey Band	7:30 p.m.	90 @ \$12.00 Contract Provision
8-28	Oak Ridge Boys, Patty Loveless	7:30 p.m.	60 @ \$11.00 Contract Provision
8-29	Bob Dylan, Wire Train	7:30 p.m.	102 @ \$12.00 Contract Provision
8-30	Roger Whittaker	7:30 p.m.	4 @ \$11.00 Contract Provision
			875 @ \$11.00 Editor, Legislator
8-31	George Strait, Billy Joe Royal	7:30 p.m.	120 @ \$11.00 Contract Provision
9-01	Beach Boys, Marshall Tucker Band	2:00 p.m.	108 @ \$12.50 Contract Provision
9-01	Beach Boys, Marshall Tucker Band	7:30 p.m.	100 @ \$12.50 Contract Provision
9-02	John Denver	7:30 p.m.	50 @ \$11.00 Contract Provision
9-03	Auto Race	2:00 p.m.	681 @ \$10.00 Happenings Coupons
			378 @ \$ 7.00 Happenings Coupons

COLISEUM

8-24	English Horse Show	1:00 p.m.	5 @ \$ 4.50 Judges
8-24	English Horse Show	6:00 p.m.	5 @ \$ 4.50 Judges
8-25	English Horse Show	6:30 p.m.	5 @ \$ 4.50 Judges
8-29	Rodeo	7:00 p.m.	4 @ \$ 4.50 Announcer
8-30	Rodeo	1:00 p.m.	4 @ \$ 4.50 Announcer
8-30	Rodeo	7:00 p.m.	4 @ \$ 4.50 Announcer

A breakdown of outside gate tickets used by various departments and for institutional purposes during the 1990 fair submitted for board consideration. It was moved by Mr. Simons, seconded by Mr. Prokosch and carried that said tickets, total value \$134,752, be reclassified as non-pay (Aye-8; Nay-0).

ADMINISTRATIVE:

	# TICKETS	PRICE	TOTAL
State Agricultural Dept.	55	3.25	178.75
State Board of Electricity	7	3.25	22.75

State Employment Services	37	3.25	120.25
State Health Dept.	72	3.25	234.00
State Revenue Dept.	66	3.25	214.50

DEPARTMENTAL:

Box Office	273	3.25	887.25
Cattle	23	2.00	46.00
Communications	24	3.25	78.00
	427	3.25	1,387.75
	169	2.00	338.00
Creative Activities	136	3.25	442.00
Education	556	3.25	1,807.00
Finance	20	3.25	65.00
Fine Arts	18	3.25	58.50
Free Entertainment	8,084	3.25	26,273.00
FFA	228	3.25	741.00
4-H	9,306	3.25	30,244.50
Fruits	112	3.25	364.00
Grandstand	1,318	3.25	4,283.50
Guest Services	433	3.25	1,407.25
Horse	193	3.25	627.25
Meats	95	3.25	308.75
Park & Ride	45	3.25	146.25
Public Safety	1,557	3.25	5,060.25
Sanitation	104	3.25	338.00
Senior Citizens	313	3.25	1,017.25
Youth Camp	40	3.25	130.00

INSTITUTIONAL — ORGANIZATIONS

Adults	8,318	3.25	27,033.50
Youth/Senior	449	2.00	898.00

INSTITUTIONAL — PROMOTION

Multiple Sclerosis Readathon	15,000	2.00	30,000.00
------------------------------	--------	------	-----------

ORGANIZATIONS

ABLE (Association for Blind Living and Education)	\$325.00
Access Ability - Robbinsdale	113.75
Access Ability - Minneapolis	325.00
Alexandra House, Inc.	190.00
Alpha Human Services	113.00
Amicus	325.00
Andrew Residence	325.00
Anoka Metro Regional Treatment Center	325.00
Association of Retarded Citizens - Hennepin Co	130.00
Arner Group Home - Duganville	22.75
Ascension Place	104.00
Aurora House	29.25
Bethesda Lutheran Medical Center	195.00
Big Brothers/Big Sisters - Minneapolis	262.50
Big Brothers/Big Sisters - St. Paul	262.50
Blue Earth County - Second Step	48.75
Bridgeview	65.00
Bristol Place	325.00
Brown House	48.75
Bryn Mawr Health Care Center	276.25
Bush Children's Center	207.50
Cambridge Regional Human Services	325.00
Camilia Rose Nursing Home	48.75
Camilia Rose Group Home	162.50
Careco Homes	48.75
Catholic Charities of St. Paul/Minneapolis	266.50
Civic Community Services, Inc.	325.00
Community Options	55.25
Community Support - Carver County	58.50
Community Support Program	48.75
Cooperating Community Programs - Minneapolis	204.75
Cooperating Community Programs - St. Paul	97.50
Cooperating Community Programs - So. Center Manor	29.25
Cooperating Community Programs - Hyacinth	19.50
Companion Program	81.25
Courage Center	325.00
Dakota Adult Transition Center	130.00
Dakota Mental Health	32.50
Demar Children's Home	105.00
Duganville	130.00
Eden Wood	211.25
Eden Programs	325.00
Elliot Board and Care	26.00
Fairview Treatment Center	104.00
Family Style Homes	260.00
Fairbault Regional Center	325.00
Franklin Place East, Inc.	113.75
Louise Fraser Community Services - Carlson House	55.25
Gladstone Group Home	26.00
Guild Hall Residence	325.00
Hammer Residences, Inc.	325.00
Hennepin County Medical Center/Inpatient Psych.	162.50
Hennepin County Day Treatment	113.75
Hennepin County Social Rehabilitation	65.00
Hiawatha Valley Mental Health Center	162.50
Hoikka House, Inc.	276.25
Home Free	443.75
Homeward Bound, Inc.	325.00
Hubert H. Humphrey Job Corps Center	325.00
Muriel Humphrey - Fraser House	52.00
Muriel Humphrey - Westby	71.50
Intermediate District #287 - Project 70001	97.50
Juel Fairbanks Chemical Dependency	130.00

Billy Kelly House	65.00
Kelly Institute	130.00
Lake Owasso Residence	325.00
Little Sisters of the Poor	97.50
Lutheran Social Services - Apartment Program	39.00
Lutheran Social Services of Minnesota-Friendship House.	97.50
Lyngholmsten Care Center	195.00
Lynwood Health Care	48.75
MRC - Central Hennepin Community Support Program	97.50
MRC Mental Health Services	97.50
Mains'l Services	35.75
March House	65.00
Mary T - Sand Creek	22.75
Mental Health Resources - Case Management	325.00
Mental Health Resources - Community Connections	32.50
Mental Health Resources - Eastside Regional Community Support Services	243.75
Mental Health Resources - Friends	162.50
Mental Health Resources - Longfellow/Nokomis Regional Community Support Service	65.00
Mental Health Resources - Sharing Life in Community	97.50
Mental Health Resources - Skills	325.00
Merrick Co.	325.00
Midway Training Services	162.50
Minnesota Aids Project (MAP)	325.00
Minnesota Correctional Facility - Lino Lakes	162.50
Minneapolis Society for the Blind	325.00
Minnesota Veterans Home	325.00
Mission Lodge	91.00
Muscular Dystrophy Association	325.00
NEB Care Centers - Greenwood East & West	159.25
Nekton, Inc.	325.00
New Foundations	65.00
New Hope Center	97.50
Norhaven, Inc.	325.00
Northwest Hennepin Community Support	130.00
Oasis	55.25
180 Degrees, Inc.	117.00
Opal Corporation	325.00
Opportunity Workshop - Minnetonka	325.00
Opportunity Workshop - Golden Valley	325.00
Orion House	19.50
Outreach - Bloomington	39.00
Outreach - Rice Creek	26.00
Outreach - Stevens	19.50
Passageway	97.50
Peoples Apartment Network	162.50
People - Anchor Mental Health	48.75
People - Apollo Center	97.50
People - Child Care Residence	130.00
People - Journey House	29.25
People - Northside Community Support	130.00
People - Petra Howard House	45.50
Phoenix Residence, Inc.	312.00
Phoenix Residence - Clinton House	26.00
Phoenix Waiver Apartments	13.00
Pillsbury Unity Neighborhood Center	568.75
Portland Residence	325.00
Prodigal House	162.50
Ramsey Clinic	325.00
Ramsey County Interpreter - Project 36 of People, Inc.	97.50
Ramsey County Mental Health Clinic-Fort Rd. Day Treatment	275.50
Ramsey County Foster Care Unit	325.00
Ramsey County - Joanne Reding Adult Foster Home	32.50
Ramsey County Volunteer Services	325.00
Recovery Resource Center	65.00
REM - Glendale	26.00
REM - Lyndale	48.75
REM - Metro Services	97.50
REM - Pillsbury, Inc.	130.00
REM - Ramsey	97.50
Riverside Medical Center	81.25
Rose of Sharon Manor	97.50
Roseville Area Schools, #623-Transition Center	52.00
St. Joseph's Home for Children	262.50
St. Joseph's Hospital	130.00
St. Paul Ramsey Medical Center	48.75
St. Paul Society for the Blind	325.00
St. Peter Regional Treatment Center	325.00
Salvation Army - Adult Rehabilitation	325.00
Salvation Army - Harbor Light Center	110.50
Senior Resources	156.00
Shalom Home, Inc.	325.00
Six Acres (SILS)	97.50
South Center Manor	81.25
South Hennepin Community Support	325.00
Southside Services, Inc.	130.00
Sur La Rue	243.75
Thomas Allen, Inc.	325.00
Thomas Group, Inc.	113.75
Trevilla of Robbinsdale	325.00
United Blind of Minnesota	243.75
United Hospital	81.25
University of Minnesota - China Center	325.00
University of Minnesota Hospital & Clinic	325.00
Vail Place	227.50
Volunteers of America - Bar-None	281.25
Way 12 - Halfway House	81.25

The Wayside House, Inc.	136.50
Welcome Home	217.75
Wellspring Therapeutic Communities	48.75
YMCA Kellogg Club	130.00
Zumbro Valley Mental Health Center - Goodhue Co. Branch	29.25
Maranatha Assembly of God	135.00

Discussion was undertaken regarding the various changes of society and federation sessions scheduled for the annual meeting in January. Secretary was instructed to arrange that the regular meeting of the board be set for Monday morning, Jan. 21.

Secretary circulated for board information a copy of the letter of agreement from North Star State Bank covering a \$600,000 construction loan on the proposed visitor's center. Approval of said loan was granted at the board meeting of 9-1-90. No further action required.

Secretary briefly reported on the financial outcome of the 1990 river ride operation. Net proceeds were \$17,145 after payment of annual and (one-time) maintenance expense. He also reported that the newly initiated gift shop experienced net revenue of \$4,500.

President Korff opened a discussion on the question of whether the current management title assigned to Mr. Heffron, that of secretary-general manager, was proper and correct for the fair's chief executive officer. He recommended that a more appropriate title would be that of executive vice president. After discussion, it was moved by Mr. Keenan, seconded by Ms. Roehlke and carried that Special Assistant Attorney General Sherry Enzler be asked to provide an opinion as to whether such a title would be in conflict with current state law or state government regulation (Aye-8; Nay-0).

Mr. Lilliquist provided a detailed report on his and President Korff's visit to the State Fair of Oklahoma, Sept. 20-21.

Meeting adjourned.

MINUTES IN VACATION

November

6—Heffron, Fischler and members of the senior executive staff met with BRW Engineering personnel to discuss "Commonwealth Park" project.

7—Wenzel and Heffron attended a meeting of the Ramsey County Light Rail Committee at the St. Anthony Park Library. Frost met with Ed Warn, City of St. Paul real estate division.

10—A video game equipment auction was held in the Block 44 arcade. The executive committee approved the Oct. 31, 1990 cash transaction summary as follows:

GENERAL FUND ACTIVITY:

Cash Balance-Sep. 30, 1990		\$ 535,805
Add: Oct. Cash Deposits	\$ 1,222,042	
Less: Payroll Ending Oct. 10	(100,664)	
Payroll Ending Oct. 24	(74,245)	
Oct. Cash Disbursements	(1,504,270)	(457,137)
Cash Balance-Oct. 31, 1990		\$ 78,668

MARKETABLE SECURITIES ACTIVITY:

Balance-Sep. 30, 1990		\$ 2,208,823
Add: Interest Earned	\$ 18,799	
Securities Purchased	438,000	
Less: Service Charges	(180)	
Securities Cashed	(1,450,000)	(993,381)
Balance-Oct. 31, 1990		\$ 1,215,442

BUILDING FUND ACTIVITY:

Balance-Sep. 30, 1990		\$ 201,928
Add: Interest Earned	\$ 2,984	
Securities Purchased	750,000	
Less: Service Charges	(42)	
Disbursements	(438,000)	314,942
Balance-Oct. 31, 1990		\$ 516,870

CASH BALANCES FOR MONTHS ENDING OCTOBER 31:

	1989	1990
General Fund	\$ 655,726	\$ 78,668
Petty Cash	500	2,050
Marketable Securities	816,389	1,215,442
Building Fund	189,083	516,870
Total Cash Balances	\$ 1,661,698	\$ 1,813,030

14—Pooch, Ohlhauser, Goodrich, Rustad and Frost took part in a meeting with Minnesota horse group representatives who utilize the Coliseum fair-time as well as off-season.

19—Gale Frost, Hammer and Heffron met to formulate plans for the new Heritage Exhibits department.

16-17—Hammer conducted a workshop at the North and South Dakota Association of Fairs meeting in Bismark.

20—Sinclair, Frenette, Casey, Goiffon, Wenzel, Frost, Fischler, Hammer and Heffron met with Warren Wunderlich and Phil Vogel of TKDA to discuss visitor center plans. Frost met with Sherry Enzler and Carl Rasmussen, Minnesota Department of Transportation, regarding University of Minnesota transitway and its effect on a parcel of land near the southeast corner of the fair's "Sussell" property.

23-Dec. 24—A Christmas tree and wreath sale was held on Block 9.

26-30—Wenzel, Frost, Frenette, Hammer, Sinclair, Leach, Goiffon, Armstrong, Pooch, Fischler and Heffron, along with board members Morris, Annestad, Korff, Lilliquist, Prokosch, Roehlke, Simons and Recknor attended the annual convention and trade show of the International Association of Fairs & Expositions in Las Vegas, Nevada.

27—The Legislative Audit staff began its field work at the fair.

December

4—Frost and Sherry Enzler met with University of Minnesota officials to discuss the University's apparent usurpation of a parcel of society property near the southeast corner of the fairgrounds to facilitate construction of its transitway. Pooch met with Dan Ramberg and Dan McPherson of the Paso Fino horse breed to discuss possible implementation of their breed into the fair.

5—Wenzel and Heffron attended a Ramsey County Light Rail committee meeting at the St. Anthony Park library.

6—Pooch, Frenette and Heffron attended a Suburban Chamber mayors forum at the offices of Hewlett-Packard. Neil Larson, Frost, Leach, Wenzel and Heffron held a meeting to discuss Grandstand security and ushering. Sinclair attend a St. Anthony Park Planning Commission meeting.

7—Staff of the state waste management office met with Frost, Hammer, Pooch, Wenzel, Sinclair, Frenette and Heffron to discuss plans for recycling plastic at the '91 fair. Members of the staff attended a funeral service for Art Blakey's father at St. James Church in St. Paul. Hammer, Leach, Frost and Heffron met with Dan Duvall of Group V Sales to discuss contract terms for TNN television coverage of the Miller 300 auto race on Labor Day, Sept. 2.

10—Art Blakey, Wenzel and Heffron met with Lt. Dick Ekwall of the St. Paul Police Department to discuss off-season traffic management of the fairgrounds. The executive committee approved the Nov. 30, 1990 cash transaction summary as follows:

GENERAL FUND ACTIVITY:

Cash Balance-Oct. 31		\$ 78,668
Add: Nov. Cash Deposits	\$ 279,835	
Less: Payroll Ending Nov. 7	(80,023)	
Payroll Ending Nov. 21	(64,817)	
Nov. Cash Disbursements	(335,325)	(200,330)
Cash Balance-Nov. 30, 1990		\$ (121,662)

MARKETABLE SECURITIES ACTIVITY:

Balance-Oct. 31, 1990		\$ 1,215,442
Add: Interest Earned	\$ 7,296	
Less: Service Charges	(412)	
Securities Cashed	(200,000)	(193,116)
Balance-Nov. 30, 1990		\$ 1,022,326

BUILDING FUND ACTIVITY:

Balance-Oct. 31, 1990		\$ 516,870
Add: Interest Earned	\$ 3,280	
Less: Service Charges	(52)	3,228
Balance-Nov. 30, 1990		\$ 520,098

CASH BALANCES FOR MONTH ENDING NOVEMBER 30:

	1989	1990
General Fund	\$ 603	\$ (121,662)
Petty Cash	500	2,050
Marketable Securities	1,324,662	1,022,326
Building Fund	190,356	520,098
Total Cash Balances	\$ 1,516,121	\$ 1,422,812

11-12—St. Paul Police held a training exercise on the streets south of Commonwealth.

12—Frost, Wenzel and Heffron met with Gus Donhowe of the U of M to discuss the planned intercampus transitway. Frost, Hammer and Heffron met with Larry Shear of Bolin Advertising to discuss syndicating advertising campaigns with other fairs. Pooch met with Beth Miner, Mary Armstrong and Mike Parish of the Minnesota Hunter and Jumper Assn. to discuss changes in their classes for 1991.

13—Wenzel, Young, Goiffon, Frost, Sinclair, Hammer and Heffron met with Bonnie Plummer from the state telecommunications office to discuss telephone cabling and service at the '91 fair. Len Born, an administrative employee of the fair during the '50s and '60s, died of a sudden heart attack.

17—Wenzel, Sinclair, Hammer and Frenette met with Dick Shapiro and Mesa Kinade to discuss plans for recycling plastics at the '91 fair.

19—The Ramsey County sheriff's department held a training exercise south of Commonwealth.

21—Fischler, Wenzel and Heffron met with Warren Wunderlich of Toltz, King, Duvall, Anderson to discuss code compliance work necessary before the '91 fair. Pooch met with Leonard Tostenson and Russ Foss of the Minnesota Horse Pullers Assn. to finalize plans to incorporate the horse pull into the fair for 1991.

January

4—Frost, Pooch and Heffron attended a Suburban Chamber of Commerce legislative preview at the the Shoreview Holiday Inn. Frost and Heffron met with Len Bonander of American Fireworks to Discuss a July 4th promotion.

8—Frost, Wenzel, Armstrong and Heffron met with Fred Johnson, Minnesota Department of Administration, and insurance consultant Don MacMeekin to discuss placing fair liability coverage with the state insurance pool. Hammer attended a meeting of St. Paul's District 10 Community Council.

9—Wenzel and Heffron attended a Ramsey County Light Rail committee meeting at the St. Anthony Park library. The executive committee approved the Dec. 31, 1990 cash transaction summary as follows:

GENERAL FUND ACTIVITY:

Cash Balance-Nov. 30, 1990		\$ (121,662)
Add: Dec. Cash Deposits	\$ 563,741	
Less: Payroll Ending Dec. 5	(73,504)	
Payroll Ending Dec. 19	(67,151)	
Dec. Cash Disbursements	(279,408)	143,678
Cash Balance-Dec. 31, 1990		\$ 22,016

MARKETABLE SECURITIES ACTIVITY:

Balance-Nov. 30, 1990		\$ 1,022,326
Add: Interest Earned	\$ 4,597	

Less: Service Charges	(236)	
Securities Cashed	(500,000)	(495,639)
Balance-Dec. 31, 1990		\$ 526,687

BUILDING FUND ACTIVITY:

Balance-Nov. 30, 1990		\$ 520,098
Add: Interest Earned	\$ 3,333	
Less: Service Charges	(106)	3,227
Balance-Dec. 31, 1990		\$ 523,325

CASH BALANCES FOR MONTH ENDING NOVEMBER 30:

	1989	1990
General Fund	\$ 48,181	\$ 22,016
Petty Cash	500	2,050
Marketable Securities	1,074,409	526,687
Building Fund	190,317	523,325
Total Cash Balances	\$ 1,313,407	\$ 1,074,078

10—Sinclair, Hammer and Wenzel met with Messrs. Jack Felmlee and K.C. Cowan of Amoco Foam Products Co. in Chippewa Falls, Wisconsin to discuss plastic recycling at the 1991 fair and possible involvement by Amoco.

11—Legislative Audit staff finished its field work at the fair.

ANNUAL MEETING

MINNESOTA STATE AGRICULTURAL SOCIETY

St. Paul Radisson Hotel
January 18-19-20, 1991

The 132nd annual meeting of the Minnesota State Agricultural Society opened with a registration session between 3 and 5 p.m. on Friday, Jan. 18. Registrations continued (all day) Saturday, Jan. 19 and (up to 2 p.m.) Sunday, Jan. 20. A total of 478 delegates, 141 associate members and 394 guests registered for participation at the meeting.

The resolutions committee met to conduct business at 4 p.m., Friday. Delegates named to this committee were Glenn Ruble, Freeborn; William Huevelman, Brown; Lyle Stetzel, Chisago (chairperson); Joe Fox, Ramsey; Rich Keenan, Hennepin; Gene Gerth, Mille Lacs; Dennis Baker, Kandiyohi; Irma Lokken, St. Louis; William Ulrich, Pennington.

Appointees to the credentials committee which met at 3:15 p.m. Saturday, included Gordon Toenges, Freeborn; Arlon Fritsche, Brown (chairperson); Ralph Carlson, Chisago; Robert Reistad, Ramsey; Rich Keenan, Hennepin; Harry Peetz, Mille Lacs; Richard Krogh, Douglas; Nancy Yuhala, Itasca; Mark Dickinson, Beltrami.

At 4:30 p.m. Saturday, delegates from the seventh and ninth regional districts met in caucus to certify nominees for election to the society's board of managers on Sunday. Selected were: seventh district - Vern Prokosch, Bird Island; ninth district - Clarice Schmidt, Sabin.

A welcome reception, sponsored by the society, the Minnesota Federation of County Fairs and the Midwest Showmen's Association, was held at 9 p.m., Saturday evening.

Members of the society met in general session at 10:30 a.m., Sunday. Secretary Heffron offered the following report:

Good morning ladies and gentlemen...

As your secretary, it is my obligation, at the end of each year and beginning of the next, to report to you on the financial health of the society, and further, to provide for your benefit a short, but concise, evaluation of the society's major presentation, the Minnesota State Fair.

Let me begin with the latter.

The immediate past year, for lack of a better word, was inconsistent. It was interesting, but not spectacular; weather was reasonable, but not helpful, spending was adequate, but not much improved from the year before; our audience was receptive, but not always excited.

History will likely record 1990 as a positive year for the Minnesota State Fair, one of growth, continued excellence and positive audience response. It will not be remembered, however, as a year of singular fame.

Overall gate attendance at 1,528,688 was down slightly from the year before. Meanwhile, paid attendance, which we consider the benchmark of good business practice, was up from 1989 and resulted in something over \$5 million in gate revenue.

This might be the appropriate time to share with you a rather important sidebar about the Minnesota State Fair. In spite of its current fifth place position in the national attendance chase behind such giants as Texas and Ohio, Minnesota continues to rank number one ahead of all other American fairs in terms of paid gate. Last year, our paid attendance rose to its highest percentage level ever at 91.32 percent paid, which means that 1.4 million of our visitors were paying customers.

This sort of empirical evidence suggests to me, and I hope to you, that the Minnesota State Fair continues to set an example of the highest order within the exposition industry, and that few, if any of its contemporaries can match the performance levels now taken for granted by its Minnesota audience.

It might also be noted that standards of excellence do not come easily; they require constant vigilance and exact high programming costs.

Grandstand concert turnout was outstanding at the '90 fair, much improved from the year before, while Coliseum audiences were down somewhat from previous fairs. The variety of available entertainment from one year to the next, when added to the whimsical nature of public response, would suggest that both Grandstand and Coliseum productions will always be high risk enterprises for the exposition.

Competition at the State Fair this past year was observed to be rigorous and reflective of good quality throughout. Entries were up in most all departments. Awards totaled something in excess of \$440,000.

Let's turn our attention for a moment to the financial side.

Gross income generated by the society in 1990 was \$11.6 million, just a tick behind last year's record \$11.7 million. Net revenue was \$323,000, off the society's five-year average by about \$200,000. The major component in revenue short fall can be found in plant maintenance expense which, for the first time in history, exceeded \$800,000. This expense category, which has literally doubled in the last 10 years, would better be looked at as investment in quality facilities, not unlike capital expenditures made to improve the plant.

If one wished a simple answer to the often asked question, "where does the fair's money go?", he or she need only look at the total funds spent on capital improvements and plant maintenance. During the past 10 years, your board and management staff have allocated nearly \$15 million to the care and betterment of the fairgrounds, its buildings, personal property and infrastructure.

Bottom line for the society in 1990 was a cash balance improvement of \$150,000 and a progressive debt reduction of \$106,000. The fair moves into 1991 with a healthy reserve of \$1.05 million and a manageable debt of \$775,000.

Let me close these remarks, ladies and gentlemen, by acknowledging a personal obligation to Mr. Bill Korff, who completes his official term of service with the society today. Bill began his career on the board nearly 16 years ago, a span of time which exceeds by about 1 year my own tenure as secretary. I'm going to miss having someone in senior status to counsel me, but more, to take the blame when things go wrong.

Of more serious note, Bill has been consistent in providing leadership to the board. He could always be counted on for thoughtful and careful consideration of matters before this body. Nevertheless, his sense of good humor and excellent timing were equally appreciated for keeping things in perspective.

It is my view that the society can ill afford to lose people like Bill Korff, people who bring to the board such high standards of service and leadership. For that reason, I'm sure you'll join me in reminding Bill that graduation from this body does not mean an end to service, but merely a change in the way it is delivered.

Thank you, Bill. As a past president, you will now be able to make grand pronouncements with very little risk.

Finally, ladies and gentlemen, may I offer for your approval a report of society cash activity for the fiscal period ending Oct. 31, 1990.

Our opening cash balance, Nov. 1, 1989, was \$1,661,700. During the year, an excess of cash receipts over cash disbursements of \$151,331 resulted in a closing balance on Oct. 31, 1990 of \$1,813,030.

This then Mr. Chairman, is the report of your secretary for 1990.

The Minnesota Farmers Union, the Minnesota Poland China Breeders Association and the Minnesota Suffolk Sheep Association did not file with Secretary of State before deadline of Dec. 20, 1990. Therefore, the credential forms submitted on behalf of the

aformentioned association are invalid.

Resolutions committee report was offered for the record by Chairman Lyle Steltz of Chisago County. The following resolutions were adopted by the memberships:

Resolution 1—We, the members of the Minnesota State Agricultural Society declare with unanimity our respect for framers of the state laws which established the society and gave it management and control of the State Fairgrounds. We resolve to demonstrate this respect through continued attention to the selection of an able board of managers in whom we may confidently entrust the functions of establishing policy guidelines and appointing an executive officer to undertake day-to-day management.

Resolution 2—Because of the dynamic social setting in which our business is conducted, because change and adaptation of the State Fair and the State Fairgrounds is necessary for future growth, and because we wish no harm to come to those programs with traditional value, we endorse the adoption of a society mission statement which will include clearly defined goals and objectives for the decade ahead.

Resolution 3—In all terms used to define the word, the 1990 State Fair was a success. Attendance was good; exhibitions of commerce, education and entertainment were well accepted; and the financial bottom line was positive. For this we wish to thank all who contributed.

Resolution 4—The Minnesota State Fair is recognized for its leadership among fairs and other public events in this state as well as nationally. We endorse whatever effort is necessary to further and strengthen the relationship between the society and the Minnesota Federation of County Fairs, the International Association of Fairs and Expositions, and other organizations devoted to professional improvement.

Resolution 5—It is with regret and a deep sense of loss that we acknowledge the deaths of the following during the past year—Gib Tiffany, Bob Jacobs, Al Bramstedt, Len Born and Aleck Anderson. Our sympathy is hereby extended to the families and friends of these fine people.

Resolution 6—Finally, a thank you to all who helped make the 132nd annual meeting of the State Agricultural Society a success. Best wishes are extended for both your individual and group efforts between now and the time we meet again.

The society proceeded to conduct elections with results as follows:

Willis Lilliquist, Kennedy president, one-year term; Bert Lund, St. Paul, vice president/fourth regional district, two-year term; Vern Prokosch, Bird Island, seventh regional district manager; Clarice Schmidt, Sabin, ninth regional district manager; Bill Korff, Faribault, honorary life member; Harold Thomforde, Crookston, hall of fame.

There being no further business before the body, the 132nd annual meeting of the Minnesota State Agricultural Society was adjourned.