



3 0307 00018 4062

# Biennial Report

## 1974 - 1976

### IRON RANGE RESOURCES AND REHABILITATION BOARD

LEGISLATIVE REFERENCE LIBRARY  
STATE OF MINNESOTA

State of Minnesota

HC  
107  
.M6  
A342  
1974/76



STATE OF MINNESOTA  
IRON RANGE RESOURCES AND REHABILITATION

HWY. 53 SOUTH - P. O. BOX 678  
EVELETH, MINNESOTA 55734

PHONE: (218) 749-8260

August 26, 1976

To the Governor and the Legislature  
of the State of Minnesota

It is my pleasure to submit to the Governor of the State of Minnesota, the Honorable Wendell R. Anderson, and the Seventieth Legislature of the State of Minnesota, this seventeenth Biennial Report of the Iron Range Resources and Rehabilitation Board.

This report is prepared in compliance with Minnesota Statutes 1975, Section 298.22, Subdivision 2, for the period including the fiscal years of 1975 and 1976.

This report is made available to the members of the State Legislature, all State Departments, and interested Federal, County and local agencies. Copies of the report are available upon request to schools, libraries, and the general public.

Respectfully submitted,

FRANK V. ONGARO, Commissioner

## TABLE OF CONTENTS

Letter of Presentation .....	1
Former Commissioners and Commission Members .....	3
Organizational Chart .....	4
IRR&R History .....	5
Forestry .....	6
Research and Beautification .....	11
Tourism Activities .....	15
Economic Improvement and Development .....	19
Financial Report .....	22

### Past IRRR Commissioners

Herbert J. Miller, Minneapolis*	July 1, 1941 to June 30, 1942
Robert E. Wilson, Minneapolis	July 1, 1942 to May 1, 1949
Ben P. Constantine, Eveleth	May 1, 1949 to November 20, 1950
Edward G. Bayuk, Eveleth	November 21, 1950 to April 30, 1955
Kaarlo J. Otava, Mountain Iron	May 1, 1955 to January 4, 1961
Hyrom S. Sorenson, Bagely**	January 5, 1951 to February 2, 1961
A.M. DeYoannes, Virginia	February 3, 1961 to May 1, 1971
Robert J. Scuffy	May 3, 1971 to January 10, 1975

\*Director from July 1, 1941 to April 18, 1942

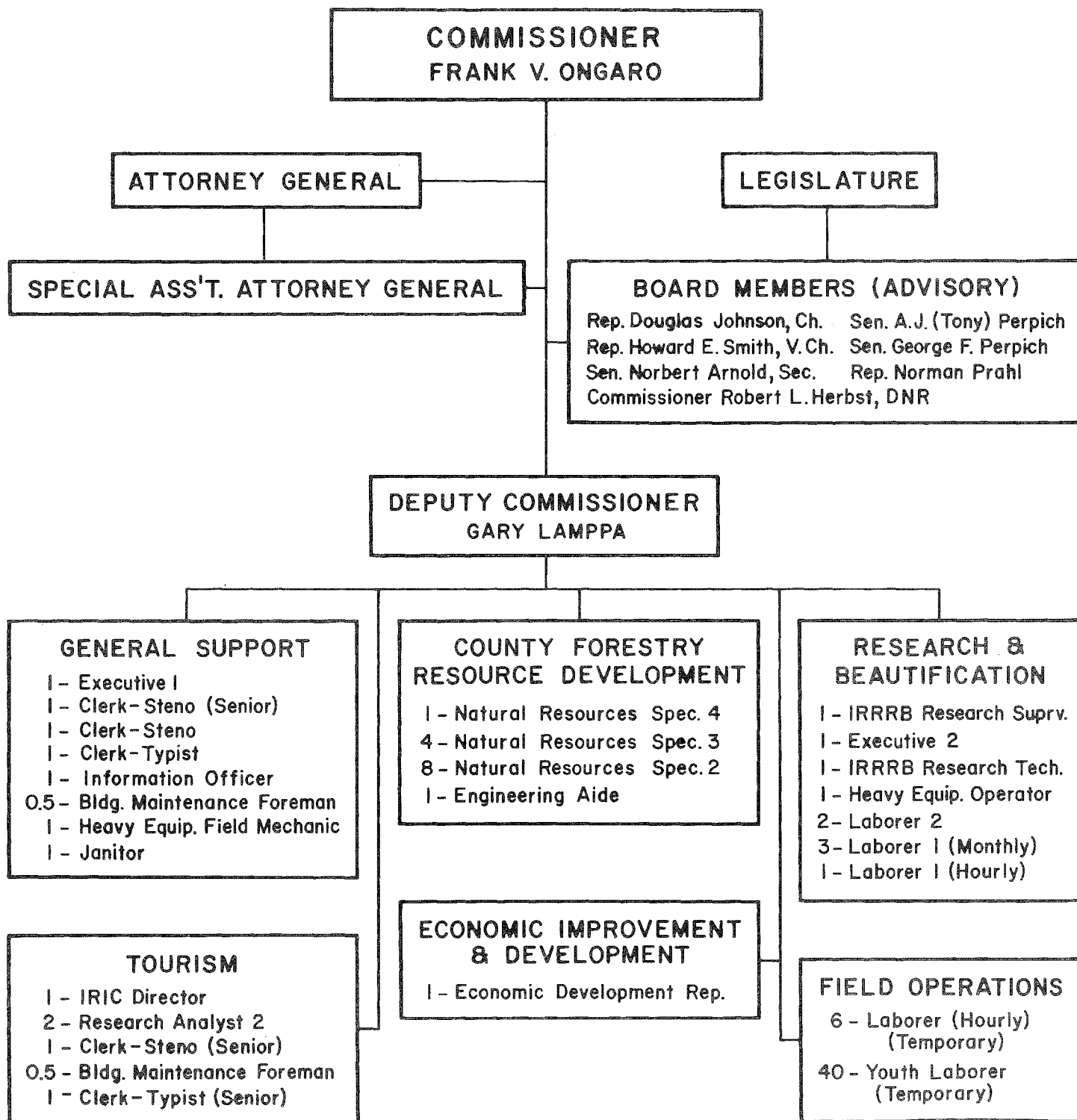
\*\*Acting Commissioner

### PAST IRR&R BOARD MEMBERS

Senator Robert O. Ashbach, St. Paul	July 1, 1967 to June 30, 1969
Senator C.A. Dahle, Duluth	May 1, 1943 to August, 1949
Senator M.J. Galvin, Winona	May 1, 1943 to February 4, 1947
Senator K.F. Grittner, St. Paul	April 21, 1955 to April 21, 1959
Senator Carl A. Jensen, Sleepy Eye	July 1, 1969 to January 2, 1973
Senator Leo J. Lauerma, Olivia	July 1, 1959 to January 30, 1963
Senator Michael E. McGuire, Montgomery	January 30, 1963 to June 30, 1965
Senator George O'Brien, Grand Rapids	May 1, 1943 to July, 1959
Senator Richard F. Palmer, Duluth	January 5, 1971 to January 2, 1973
Senator Benjamin Patterson, Deer River	January 30, 1963 to June 30, 1967
Senator Elmer Paterson, Hibbing	April 19, 1951 to January 30, 1963
Senator Herbert Rogers, Duluth	April 19, 1951 to July 1, 1959
Senator Chas W. Root, Minneapolis	July 1, 1959 to June 8, 1961
Senator Thos. D. Vukelich, Gilbert	April 19, 1945 to April 19, 1951
Senator Arne Wanvick, Duluth	July 1, 1965 to January 4, 1971
Senator Donald O. Wright, Minneapolis	June 8, 1961 to January 4, 1971
Representative Delbert Anderson, Starbuck	January 2, 1973 to January 7, 1975
Representative Elmer E. Berglund, Bemidji	April 21, 1959 to April 17, 1961
Representative Luke F. Burns, Virginia	May 1, 1943 to April 19, 1945
Representative Joseph J. Daun, St. Peter	May 1, 1943 to January, 1949
Representative Emil C. Ernst, Lester Prairie	April 21, 1949 to April 21, 1955
Representative Alfred France, Duluth	January 29, 1963 to June 30, 1965
Representative Art Frick, Sr., Grand Rapids	January 29, 1963 to June 30, 1965
Representative Peter X. Fungine, Virginia	April 21, 1955 to April 17, 1961
Representative Charles L. Halsted, Brainerd	April 21, 1955 to April 21, 1961
Representative Charles L. Halsted, Brainerd	April 17, 1961 to June 30, 1967
Representative Sidney R. Manson, Duluth	January 5, 1971 to January 2, 1973
Representative Warren S. Moore, Duluth	April 19, 1951 to April 21, 1955
Representative Willard M. Munger, Duluth	April 21, 1959 to April 17, 1961
Representative Duane Rappana, Duluth	July 1, 1965 to January 4, 1971
Representative Chas. W. Root, Minneapolis	April 24, 1947 to April 19, 1951
Representative Loren S. Rutter, Kinney	April 17, 1961 to January 29, 1963
Representative Roger H. Scherer, Brooklyn Center	January 5, 1971 to January 2, 1973
Representative Fred Schwanke, Deerwood	May 1, 1943 to April, 1955
Representative Arne C. Wanvick, Duluth	April 17, 1961 to January 29, 1963
Representative Raymond O. Wolcott, Minneapolis	July 1, 1969 to January 4, 1971
Commissioner Robert L. Herbst, Conservation*	July 20, 1966 to January 20, 1967
Commissioner Jarle Leirfallom, Conservation*	January 20, 1967 to January 4, 1971
Commissioner Wayne Olson, Conservation*	July 1, 1963 to July 19, 1966
Commissioner Clarence Prout, Conservation*	January 4, 1961 to June 30, 1963
Commissioner George A. Selke, Conservation*	May 1, 1955 to January 4, 1961
Commissioner Chester S. Wilson, Conservation*	May 1, 1943 to May 1, 1955

\*Now known as Department of Natural Resources.

**ORGANIZATION CHART**  
**DEPARTMENT OF IRON RANGE RESOURCES & REHABILITATION**  
**MINNESOTA STATUTES — SECTION 298.22**



# The I R R & R

Minnesota is a state which has always placed great emphasis on its "Quality of Life." It is a state which prides itself in programs designed to enhance its industrial climate and improve the well-being of its residents.

The history of Iron Range Resources and Rehabilitation began with its creation by the 52nd legislature in 1941. It was a period of economic upheaval for northeastern Minnesota. Extensive lumbering had left much of the area "cut over." The mining industry, through technological advancement, was not in demand of large scores of laborers.

It was a period which saw 10,000 persons unemployed in St. Louis and Itasca County. Employment in the iron mines of the region had dropped from a high of 12,000 to a low of 4,500 persons. In St. Louis County, it was a time which saw 12% of the people on some form of public assistance.

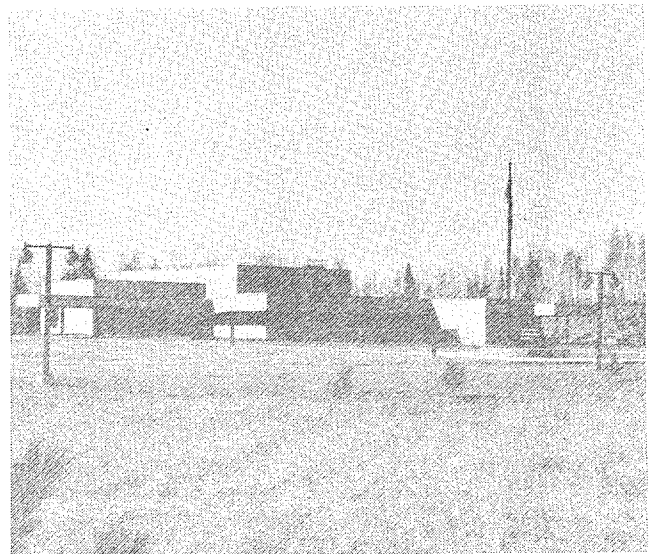
These were the problems that led the Junior Chambers of Commerce of northeastern Minnesota to form a Rehabilitation Committee with the responsibility to draw up an extensive report on the economic distress in northeastern Minnesota.

That report was submitted to the Governor and the 52nd legislature. The result was the formation of the Office of the Commissioner of Iron Range Resources and Rehabilitation. With funding from 5% of the iron ore occupation tax, the Commissioner of Iron Range Resources and Rehabilitation was instructed to:

- develop low grade iron ore
- develop peat and other remaining natural resources
- promote vocational training
- expand tourist facilities and attractions
- promote long range forestry programs in 16 "cutover" counties
- develop agriculture
- promote processing of wood products
- establish paper mills
- develop a program of rehabilitating the unemployed and underemployed

In 1943, the 53rd legislature created an advisory commission to assist the Commissioner in his efforts to improve the economic base of the Iron Range. The commission would consist of three members of the senate, appointed by the Senate Committee on Committees; three members of the House, appointed by the Speaker of the House, and the Commissioner of Conservation.

The broad charge to Iron Range Resources and Rehabilitation back in 1941 has enabled a corresponding broad range of exploration, experimentation and implementation. Out of this has emerged a state agency that is highly diversified in its efforts to improve the economic stability of northeastern Minnesota.



IRR&R Headquarters

## NEW HEADQUARTERS

For the first time in the history of the Agency, IRR&R has permanent headquarters. This came about with the construction of its new offices located on highway 53, 2½ miles south of Eveleth.

The new structure houses the division of the Agency in addition to leasing offices to the Minnesota State Patrol and the Ore Estimate Division of the Department of Revenue.

# Forestry

## Resources Development

The division of Forestry Resources Development has been actively involved in the establishment of sound land and timber management programs for northeastern Minnesota since the Agency was created in 1941. This effort has been directed primarily at the millions of acres of tax-forfeited lands in northern Minnesota. Based on tax-forfeiture laws (1935) these lands are administered by the counties in which they are found.

Initially, these counties staged a tremendous drive to get these lands back on the tax roles. This effort was hampered since most of the lands were either cutover timberlands or marginal farm lands. Burdened with a general property tax, holding these lands for forest productive purposes was not only risky but also costly.

The establishment of auxiliary forests provided some relief but not enough. It was superseded by the present tree growth tax, a taxing system which is based upon the reproductive capabilities of the land and the forests. This law has been accepted by the industry and other large holders of forest land.

The division was set up to aid these counties with their forest management problems. This was accomplished by providing trained foresters for their land departments. Later, when it became imperative that the counties become timber managers, IRR&R provided a sizable field force to carry on an appraisal of all tax-forfeited lands through a cooperative program with the Federal Forest Service and the State Department of Natural Resources (formerly the Department of Conservation). The data from this appraisal has been made available through the publication of resource bulletins for each county.

From these beginnings, the division of Forestry Resources Improvement has continually provided assistance to as many as 13 counties. Through this program, the counties have recognized the need for continuing a well developed management program for tax-forfeited lands. That need is being met through the development and institution of the multiple use concept of forest utilization.



**Timber Harvesting Operation**

### **COUNTY COOPERATIVE FORESTRY PROGRAM**

The division has nine men working with the land commissioner in the following counties: Aitkin, Becker, Beltrami, Cass, Crow Wing, Itasca, Lake and St. Louis. These men are working on a 50-50 salary basis and provide the expertise needed in the management of some 3.0 million acres of tax-forfeited lands administered by the counties. The table of forestry data gives a fine example of how well these counties are doing with their forest resource.

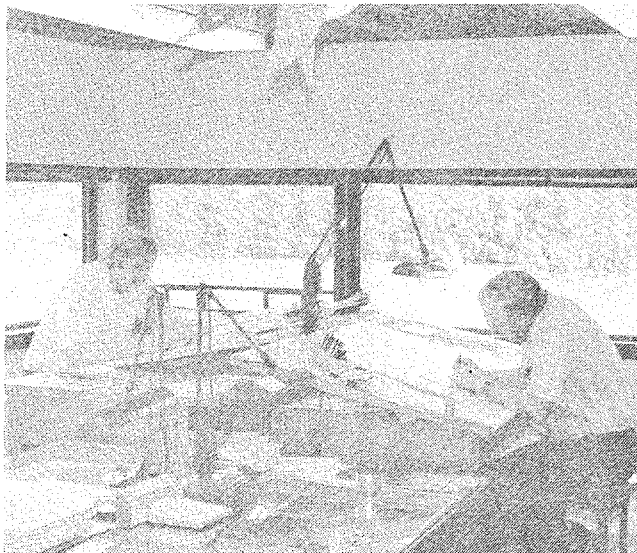
The services provided to these counties through this program cover a multitude of activities among which are timber appraisals, sales, reforestation, marketing of timber, scaling, forest inventory update, timber stand improvement, planting site location, logging site inspection, trespass adjustments, lineal surveys, wildlife and watershed management, administrative duties involving timber cutting permits, hunting leases, land exchanges and land sales, road development, gravel permits, peat land control and development and various recreation and environmental education projects.

This program is handled by four men operating out of the Eveleth headquarters. The program of assistance given covers many of those areas connected with the management of the land and forest resource.

Coordination on county efforts, on any project too large for the county to undertake on its own, is provided under this program. Field personnel are provided with accompanying equipment to do the job with expenses shared by the division and the counties.

Forest inventories are a continuous on-going operation. Currently, Itasca County is undergoing a complete inventory, township by township, with the final results being programmed into a computer. When completed, this inventory will be one of the most comprehensive inventories ever conducted by the division.

The county Assistance Program also involves itself in rendering aid to counties when requested to step in and help. An example would be the division's assistance in preparations for land and timber sales. The Program also stands ready to assist other levels of government in the maintenance and operation of their timber and land management programs.



Technicians prepare landownership maps

### Price and Marketing Report

"Minnesota Forest Products Marketing and Pricing Review," is published twice yearly by the division and is a bulletin giving the range and average prices paid for stumpage, wood products and lumber. The division has been publishing this report since 1956. Over 300 producers, dealers and government agencies provide information for the report. This state-wide report is used extensively by the forest industry and forest industry related people.

### Reproduction Value Reports

This report provides counties with per acre values of various forest species. Prepared on an annual basis, the report follows the trend of stumpage prices and is used extensively in county land and forest appraisals for lands put up for sale.

### Tree Growth Tax Reports

The division has been preparing tree growth tax tables for the counties having forest lands under this program. These reports and tables are updated every two years because of the fluctuation in stumpage values. Every ten years the reports are revised using the new growth rates of forest species growing on this tax land.

### Land Ownership Maps

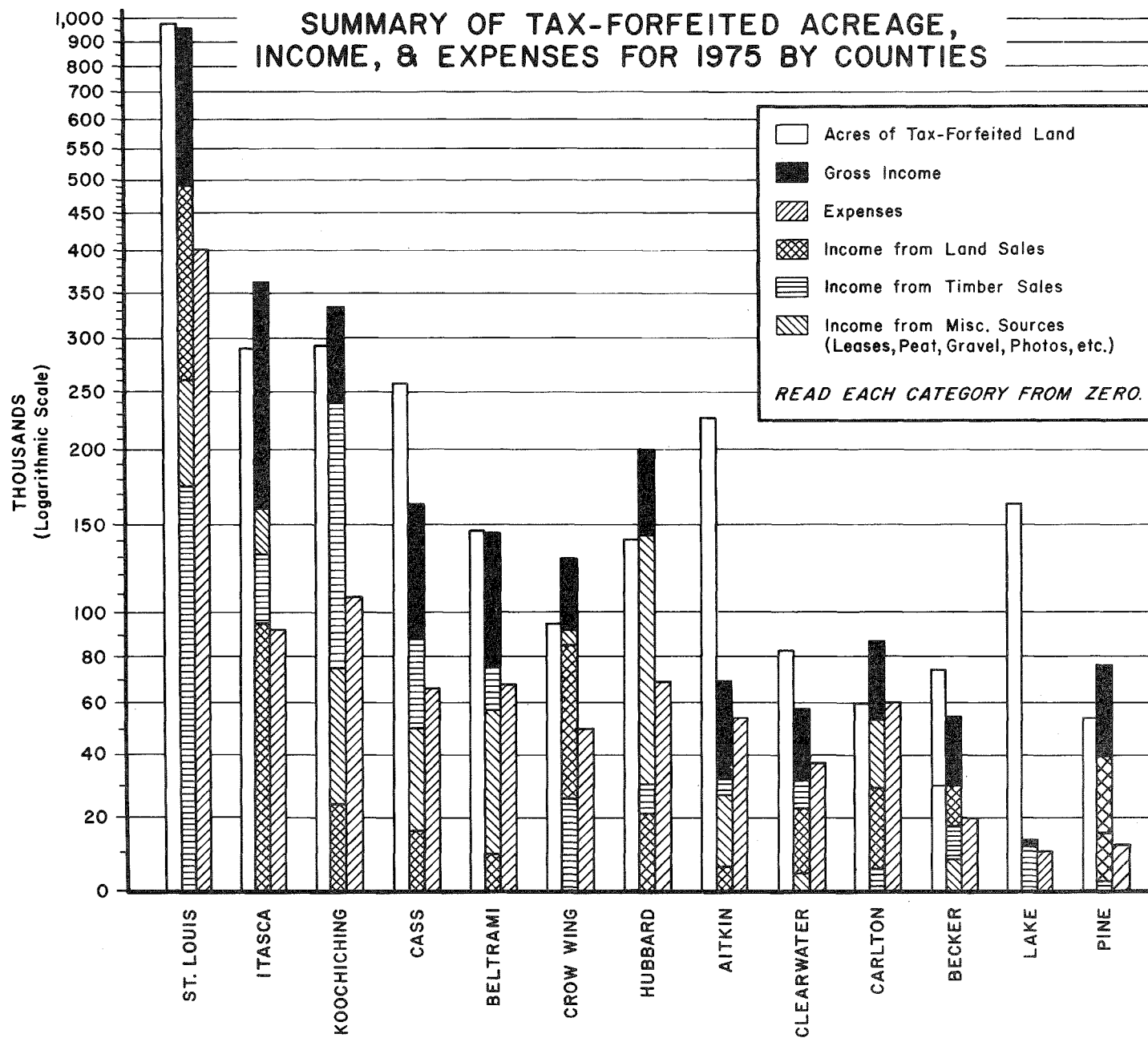
The Agency has been involved in the production of land ownership maps since the program was initiated in 1963. In all, 21 counties are included in the program. This is a special project carried on by the Research and Beautification division and will be discussed in detail in that section.



# FORESTRY DATA BY COUNTIES – 1975

	Aitkin	Becker	Beltrami	Carlson	Cass	Clearwater	Crow Wing	Hubbard	Itasca	Koochiching	Lake	Mahnomen	Pine	St. Louis	Wadena	Totals
Timber Income	\$29,359	\$19,172	\$76,826	\$5,124	\$87,850	\$31,672	\$26,277	\$32,709	\$132,268	\$239,745	\$13,326	NA	\$1,167	\$175,133	NA	\$370,428
Total Income	\$6,734	\$55,226	\$145,553	\$87,972	\$154,081	\$59,007	\$127,745	\$201,088	\$359,404	\$336,296	\$16,153	\$9,100	\$73,160	\$951,952	\$11,792	\$2,679,452
Tax-Forfeited Acreage	22,521	74,063	146,506	80,700	255,000	101,456	95,000	139,481	289,852	284,973	157,371	4,684	53,897	950,000	4,090	2,860,594
Park Commission	Yes	Yes	Yes	Yes	Yes	No	No	Yes	No	No	No	No	No	No	Yes	—
Acres in County Parks Total	10,000	417	2,975	—	60,000	53	50	3	NA	37	None	—	None	None	400	19,935
Acres in Memorial Forests	1,052	56,460	23,150	42,700	200,000	77,607	5,000	38,277	239,657	None	29,067	640	7,040	500,000	None	1,335,550
Timber Drains—Cords	9,648	4,994	14,040	—	22,990	9,075	4,282	13,561	48,022	63,275	8,966	None	584	44,838	100	243,475
Active Timber Permits	83	6	298	85	151	90	30	35	300	275	106	NA	NA	300	2	1,761
No. Trees Planted to Date	3,543,000	1,416,000	3,260,500	1,195,500	2,778,500	2,376,000	1,640,300	2,452,000	16,178,000	5,393,500	322,000	557,000	95,000	9,650,000	1,753,000	52,610,300
Public Access Roads Total	5	20	—	2	None	14	8	11	4	15	None	—	None	None	None	75
Snowmobile Trails— Miles	110	170	None	23	100	50	36	12	—	81	None	—	41	None	15	638
Leases—Total (Years)	(1) 11	(52)	(6)	(7) 151	(1)	(43) 99	None	—	(3)	(11)	(184) 588	1	(6)	(81)	2	(395) 852
Developed Campsites— Total	30	None	None	4	None	50	1	0	—	10	None	—	None	None	11	106
Apportionments																
75	\$6,280	\$72,633	\$56,459	\$14,865	\$69,620	\$28,291	\$38,483	\$37,603	\$158,670	\$178,035	None	\$5,118	\$61,580	\$235,864	None	\$963,501
74	\$30,687	\$41,957	\$62,897	\$13,695	\$86,250	\$36,886	\$35,192	\$17,187	\$319,060	\$380,284	None	\$2,262	\$71,830	\$394,170	—	\$1,492,357
Total	\$36,967	\$114,590	\$119,356	\$28,560	\$155,870	\$65,177	\$73,675	\$54,790	\$477,730	\$558,319	—	\$7,380	\$133,410	\$630,034	—	\$2,455,858
Misc. Apportionments																
75	\$6,485	\$7,615	\$28,580	\$15,187	\$32,337	\$6,695	\$40,223	\$72,186	\$113,434	\$46,345	—	\$2,193	—	\$213,081	—	\$584,361
74	\$29,243	\$105,532	\$22,108	\$13,948	\$37,000	\$2,973	\$37,242	\$38,083	\$188,175	\$95,753	—	\$969	—	\$269,153	—	\$745,179
Total	\$35,728	\$113,147	\$50,688	\$29,135	\$69,337	\$9,668	\$77,465	\$110,269	\$301,609	\$142,098	—	\$3,162	—	\$482,234	—	\$1,329,540
No. County Employees in Land Department	4	1	4	2	6	3	1	3	4	8	1	None	1	16	None	55
No. IRRRC Personnel Assigned to County	1	.25	.75	0	1	0	1	0	2	0	1	0	0	2	0	9

# SUMMARY OF TAX-FORFEITED ACREAGE, INCOME, & EXPENSES FOR 1975 BY COUNTIES



## OTHER FORMS OF ASSISTANCE

### Aerial Photography Inspections

The division provides personnel to inspect the aerial photography considered for purchase by the counties. Corner locations on these photographs are plotted and a flight index map is made for easy reference.

### Coordinating for Special Products

Division personnel are available to assist in the development of various projects. This past biennium, division personnel were involved in the Stur-Shan Dam project for St. Louis County and the Carey Lake Recreation project for the Town of Stuntz.

### Study of Tax Forfeited Lands

IRR&R's division of Forestry, in cooperation with the North Central Experiment Station and Individual counties, has been conducting a study of tax-forfeited lands for a number of years. This study has been looking into what has taken place over the years, the trends, and the resources available that will lead to the positive action which will be taken to further develop these lands for the good of society.

### Recreation Developments

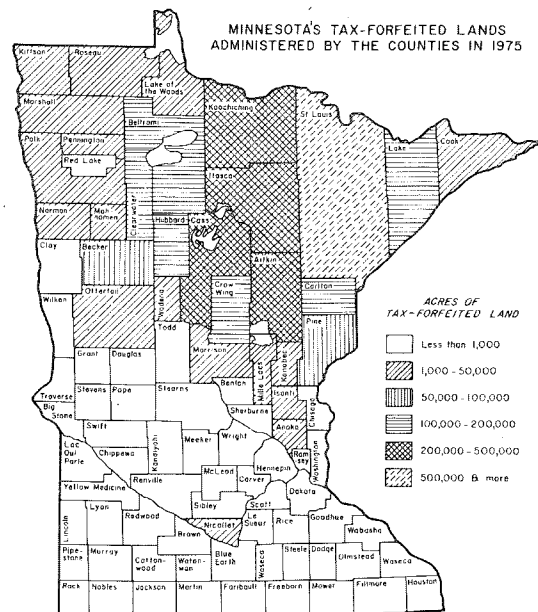
As more leisure time is being experienced, it is only fitting that counties recognize this and consider doing more with their tax-forfeited lands. Some of these lands are situated near population centers and could be used for the development of good park and recreation programs. The division has encouraged the acceptance of the multiple use concept and will continue to provide expertise and aid in the development of needed campsites, trails and accesses to lakes.

### Block Land Sales

The division provides assistance to the counties when large land block sales are to be held. The personnel are assigned to assist with field work on a temporary basis. Assistance is not provided for regular county land sales. These are prepared by the county personnel assigned to such a project.

### Forest Fire Fighting

Arrangements have been made to assist the Department of Natural Resources whenever called upon for fighting fires or providing supervisory personnel during grave emergencies. Agency equipment is also made available for fire control or suppression work.



### PROPOSED PROGRAMS

#### Forest Survey

A survey of our forest resources is sorely needed. The last comprehensive survey was completed in 1962. This information, though invaluable, is outdated. Trees keep growing, logging takes its measure and natural disasters and expansion of civilization continuously take their toll. To keep up with these changes, it is necessary to re-survey the timber stands.

#### Site Preparation

Many areas of our tax-forfeited lands have been depleted of desirable species of timber, and, at present, are growing poor quality trees. These areas should be gone over with heavy equipment destroying the present vegetation and implanted with species of timber more suited to the soils and more valuable on the market. Only through site preparation and tree planting will much of these lands come into production of desirable timber.

# Research & Beautification

The division of Research and Beautification is the exploratory arm of IRR&R. As a result, it is concerned with discovering new means of utilization of our areas mineral, natural and human resources. This brings to the Agency the ability to develop innovative programs that will be of benefit to a wide spectrum of society.

## PEAT RESEARCH

### Peat-Over-Sand Filter

Iron Range Resources and Rehabilitation, working in conjunction with the Soil Science Department of the University of Minnesota, was responsible for the research and development of the "Peat-Over-Sand" filter.

Continued assistance has been given to the United States Forest Service and the Minnesota Highway Department, both of whom are installing these sewage treatment filters in numerous locations. The division participated in numerous meetings with the United States Forest Service regarding the operation, monitoring and analyzing results of the filters.

Information on the filters have been furnished to consulting engineers, municipalities, resort owners and private individuals. An article describing the filters was published in the *Minnesota Conservation Volunteer*. The article drew wide interest.

### Inter Agency Assistance

In 1975 the Department of Natural Resources received federal funding to conduct a study of peatlands and examine peat resources for energy, petro-chemical and other uses to provide guidelines for development and environmental protection.

The Division Supervisor has aided in the program planning and information collection. He also serves as a member of the Peat Advisory Committee. Numerous meetings have been attended at which time assessments of work completed as well as plans for future work have been formulated.

Under this program the DNR has started peat inventory work under a separate program. This program is similar to past IRR&R inventory work. The Division Supervisor is playing an active part in the planning, work and evaluation of this program.

### Peatland Evaluations

State law prohibits the sale of any peatlands that are determined to be of commercial value in terms of peat development. Based on past survey work and current field investigations, the Division continues to provide peatland evaluations for the Department of Natural Resources and County Land Departments.

If peatlands are determined to be of commercial value, these lands are then withdrawn from sale and can be leased for peat development.

## Direct Burning of Peat

In an effort to evaluate the potential of peat as a direct burning fuel, the Division, in cooperation with the Midwest Research Institute and the Soil Science Department of the University of Minnesota, has begun the application process to secure federal funds to test the feasibility of utilizing peat as a power plant fuel.

In Europe, peat is used extensively for fueling central heating and electrical generating plants. Iron Range cities such as Hibbing and Virginia now have plants of a similar nature.

The proposed experiment would be conducted at the Virginia Municipal Plant where one of the coal fired boilers would be converted to burn peat.

Meetings have been held with the Energy Research and Development Administration in Washington, D.C., and the Upper Great Lakes Regional Commission. Strong interest has been indicated by both agencies. A proposal is being submitted which would provide for a two year demonstration using peat as the fuel for electrical generation and steam heating.

In anticipation of approval of this proposal, the Division has begun research at Wilderness Valley Farms to establish new drying and harvesting methods for peat. It is hoped that the research will provide a better drying method not only for fuel peat, but also horticultural peat as well. Preliminary results have been very promising.



Peat drying experiments at Wilderness Valley Farm

## Gasification

As a result of the fuel crisis, the Minnesota Gas Company (Minnegasco), has announced plans for a peat gasification plant in northern Minnesota. The company has already applied for a lease of 200,000 acres of peatlands.

The IRR&R has cooperated with the DNR and Minnegasco in providing information and knowledge to evaluate and develop this program.

Peat has been provided from the Agency's Wilderness Valley Farms complex to the Institute of Gas Technology in Chicago, the US Bureau of Mines and Minnegasco. These samples will be used in testing and researching this innovative program.

## Public Information

Minnesota's seven million acres of peatlands have become a resource of increased importance. The division has assisted in public education, radio, television, newspaper articles and presentations to many organizations informing them of the extent of this resource, its value, potential, and developmental possibilities.

Having been a leader in peat research and inventory work on Minnesota's peatlands, the division continued to provide information and assistance to the peat producers in Minnesota as well as the rest of the United States, Canada and many countries of Europe.

Considerable interest has been shown in developing Minnesota's peat resources. A majority of the information regarding this resource has been issued from this division. This information has been sent to power companies, pipeline companies and highway planners and has been a valuable aid in their program development.

## Fifth International Peat Congress

The Division Supervisor attended the fifth International Peat Congress held near Warsaw, Poland. Numerous scientific papers were presented at the Congress. In addition, an extensive tour of peatlands and peatland developments followed the conclave.

As a result of the efforts of Dr. R.S. Farnham of the University of Minnesota, and Don Grubich of IRR&R, the Sixth International Peat Congress will be held in Duluth, Minnesota in 1980. It is the first time the conference will be held in the United States.

## BUILDING DEMOLITION PROGRAM

IRR&R's Building Demolition Program continued to meet with great success. Aimed at cleaning up the environment through the demolition of abandoned and dilapidated buildings throughout northeastern Minnesota, to date, more than 1,000 buildings have been removed from communities and waysides in six counties.

The program has been operational in virtually every community in northern St. Louis County and Itasca County. It has also been effective in Lake, Cook, Carlton and Koochiching Counties.

Financed entirely by IRR&R, equipment and manpower is provided at no direct cost to the property owner. As a result, demand for the program far out-paces the program's capability and a large waiting list has developed.



BEFORE



AFTER

## ABANDONED AUTOMOBILE PROGRAM

The Minnesota Pollution Control Agency was again assisted by the Division in the inventory, pickup and recycling of abandoned automobiles in northern St. Louis County.

The first collection resulted in the pickup of approximately 900 vehicles throughout the county. This was a carry over from past inventories and public solicitation.

In 1975, the MPCA financed another inventory which resulted in the location of nearly 3,000 vehicles. Of these, 500 were voluntarily released and a contract was let for pickup. This has been completed.

Rising scrap iron prices has resulted in numerous private collectors entering the field. The majority of the vehicles inventoried have now been collected. It is expected that private collections will further the clean-up effort in the area.

## WILDERNESS VALLEY FARMS

IRR&R's 520 acre research facility was put to a number of uses during the Biennium.

Independent School Districts #701 and 710 were leased several acres of land for development of their school agriculture programs. In addition, the Minnesota Highway Department was provided cultured sod during 1975.

Several buildings on the farm were leased and used as a processing area for carrots raised on adjacent lands. This operation provides for over 30 part-time jobs during the summer and fall months.

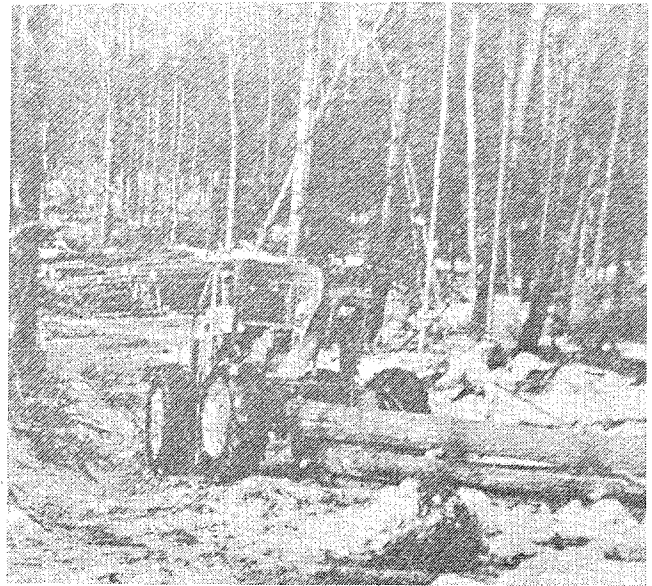
Peat was taken from the farm and sent to the Occupational Training Center in Minneapolis, the University of Minnesota and the Minnesota Gas Company for research purposes.

Several research plots were set up in 1976 to begin testing new drying methods. These research plots will provide the peat to be used in the proposed direct burning experiment in Virginia.

## SNOWMOBILE TRAILS

The division continued its Snowmobile Trail Grooming Program. Using the Agency's two SV-200 Ski-Dozers. Assistance was given area snowmobile clubs in the maintenance and grooming of trails which augment the State Trail System. Assistance was also given the State Trail System.

Technical assistance was provided on trail construction along with personnel, materials and equipment. Included in this were the Laurentian and Giants Ridge Heritage Trails area.



Grooming Laurentian Trail

## LAND OWNERSHIP MAPS

The land ownership maps program was continued during the biennium with the update and revision of eleven county maps. Maps are produced for 21 counties in northern Minnesota and detail federal, state, county and private ownership.

Map revisions during this biennium include: Becker, Beltrami, Carlton, Clearwater, Crow Wing, Hubbard, Mahnomen, Pine, Roseau, St. Louis and Wadena Counties.

The land ownership map program was instituted in 1962 and has been carried on ever since IRR&R's division of Forestry utilizes the maps in their land classification program as well as determining timber inventories. They are also available for public distribution and have been proven invaluable to planners, foresters, researchers, industries, government agencies and private individuals.

Each county map is periodically updated with information provided by IRR&R's division of Forestry working with the various County Auditors, and government agencies.

## IN-KIND SERVICE

Equipment and personnel were furnished to the East Range Historical Society in their project to restore the E.J. Longyear Diamond Drill Hole near Hoyt Lakes and the Long Lake Conservation Camp near Aitkin for road construction work.

Equipment and personnel were also placed under the disposal of the Department of Natural Resources in a fire fighting effort near Tower.

## OTHER PROJECTS

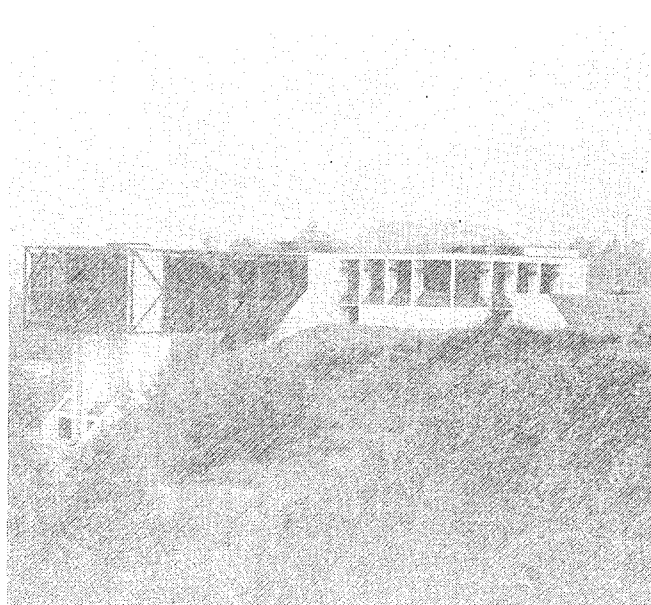
The division provided a topographic survey for the planning and upgrading of McKinley State Park near Tower. Information on past surveys and drilling work was also made available to a number of government agencies and individuals on request.

The topographic map inventory is maintained with complete books available for examination at the Agency's offices near Eveleth.

# Tourism Activities

During the past biennium, IRR&R's newest division has continued to direct its attention on the development of the Iron Range Interpretative Center, encouraged and promoted the expansion of the overall Iron Range Interpretative Program and provided funding for various public sponsored projects geared to the enhancement of the tourism industry of northeastern Minnesota.

IRR&R's involvement in tourism came as a result of the development of the Iron Range Trail. Established by the Minnesota State Legislature in 1969, the Iron Range Trail spanned the three Iron Ranges of Minnesota and related points on the North Shore of Lake Superior. Out of this original concept emerged the Iron Range Interpretative Program which is designed to develop a greater tourist economy for Minnesota's mining region.



IRON RANGE INTERPRETATIVE CENTER

## THE BUILDING AND SITE

Construction of the 33,000 square foot structure began in August of 1974. Total cost of the building which will house the 34 exhibits was 1.78 million.

The Center features an upper and lower display area serviced by an elevator and steps, a 180 seat multi-media theater, an oral history library and research center. A 150 foot solar bronze, reflected glass bridge juts out over the lip of the Glen Mine. It will serve as an observation area and will also house the beginning of the exhibit program.

The 120 acre site, donated by the Pillsbury, Bennett and Longyear families, features a 200 vehicle parking lot, a nature trail that winds its way along the edge of the Glen and Pillsbury Mines. Numerous rest areas and picnic facilities are provided along the length of the trail.

Funding for construction of the Center came from federal, state and local units of government:

Federal	\$500,000	United States Department of Commerce Economic Development Admin.
	\$150,000	Upper Great Lakes Regional Commission
State	\$780,000	State of Minnesota Iron Range Resources and Rehabilitation Board
	\$ 38,000	Minnesota Department of Economic Dev.
	\$500,000	Minnesota Resource Commission
	\$ 12,000	Minn. Revolutionary Bicentennial Comm.
Local	\$ 75,000	City of Chisholm, Minn.



## THE EXHIBITS

The exhibit program for the Center got under way in February, 1975. Five nationally recognized design firms were interviewed with the contract awarded to Joseph Wetzel and Associates, Stamford, Connecticut.

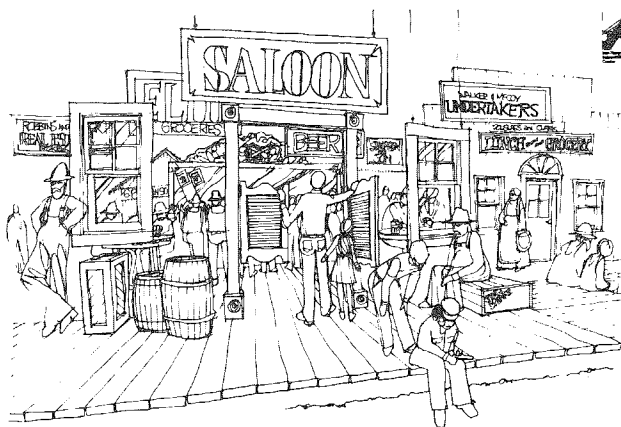
The lengthy design process was initiated with a four day seminar in which members of the Wetzel team, staff of Iron Range Resources and Rehabilitation and the Interpretative Center, and private consultants discussed what should be included in the exhibits. Out of this meeting emerged the preliminary designs of 34 exhibits that will tell the exciting story of the Iron Range, its people and industry.

Design of the exhibits has now been completed and the contract for the first phase of exhibits has been let. Fabrication and installation of the exhibits will be completed in early 1977.

Funding for the exhibits has involved a major project. Again, federal, state, local and private sources have been called upon for support.

Federal	\$202,751	National Endowment for the Humanities grant to Iron Range Resources and Rehabilitation Board
State	\$221,050	Iron Range Reserves and Rehabilitation Board
	\$ 8,000	American Revolutionary Bicentennial Commission
Private	\$ 11,000	E.J. Longyear Company
	\$300,000	Iron Mining Industry of Minnesota (members of the Lake Superior Industrial Bureau)
	\$115,000	Others

The second, and final phase of the exhibit fabrication and installation will be let for contract prior to the first of January, 1977. It is expected that the Center will be in operation in the spring of 1977.



Frontier Town Exhibit

## ORAL HISTORY

The story of the Iron Range pioneer is an enthralling study. In the majority of cases, the pioneer was an immigrant from one of 39 different countries, arrived in the United States between 1900-1922 and came to the Iron Range in search of fortune. In most cases, the immigrant was in America temporarily with the intent to return to his homeland when his fortune was made. For the majority, this was to be only a dream.

In an effort to preserve this rich heritage and culture that the immigrant brought with him, the staff of the Iron Range Interpretative Center launched the Oral History Program. It is the goal of this program to tape record the stories of as many Iron Range pioneers as possible.

To date, more than 300 hours of interviews have been conducted. These are first person accounts of early life on the Iron Range, the hardships encountered and the reasons they came to America.

The tapes will be placed in the Oral History Library at the Center where they will be heard by the public. Categorized by subject content, the tapes will be a tremendous resource for future historical studies of the Iron Range and will forever record a dynamic story of immigration to the United States.

# Tourism Grants

**Northeastern Minnesota Tourist Information Center:** A grant of \$5,500 was extended to this organization for the development of a tourist information office at Lion Springs. Located 12 miles south of Eveleth on Highway 53, the site is a very popular rest area and serves an excellent site for a tourist information center since it serves the entire access of the Iron Range.

**Itasca County — “Old Calumet”** — Work was completed during the biennium on the feasibility study for the restoration of this early mining community. Tied to the Iron Range Interpretative Center and Program, this project would see the restoration of the community to circa 1900.

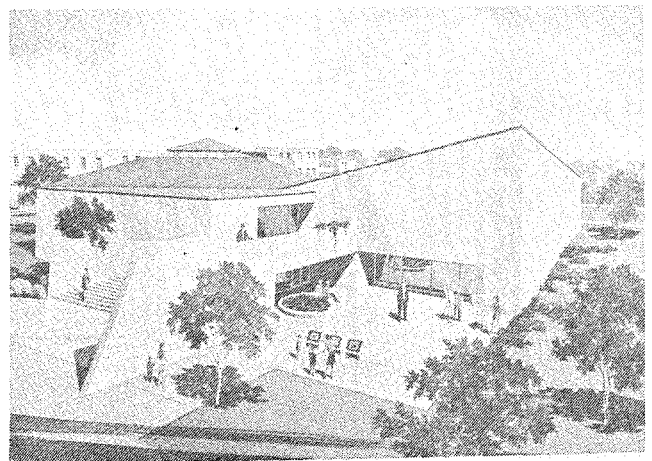
**Forest History Center, Grand Rapids** — A project of the Minnesota State Historical Society, a \$45,429.21 grant was extended the project for program staffing and development. The Center, an integral part of the Iron Range Interpretative Program will tell the story of the timber industry.

**Hibbing Community College “Planetarium”** — The IRR&R Board provided \$4,230 to fund a feasibility study for the construction of a planetarium on the campus of this northern Minnesota community college. If constructed, the Planetarium would be linked to the Interpretative Program.

**Biwabik Heritage Trails Center** — \$10,000 was extended to this project with the funds used to develop and improve the beach and swimming facilities at Embarrass Lake. This will also serve at the site for the future Heritage Trails Center which will tell the story of the early Voyager fur trading routes through northeastern Minnesota.

**Cuyuna Range Development Corporation** — A \$10,000 grant led to the completion of a “Project Development Study” for the Cuyuna Range Gateway Interpretative Center.

**Grace, The Living Art Center** — \$2,400 grant to develop plans for a Center which will honor the world famous picture “Grace” and also provide a working art center.



Grace Living Art Center, Bovey, Mn.

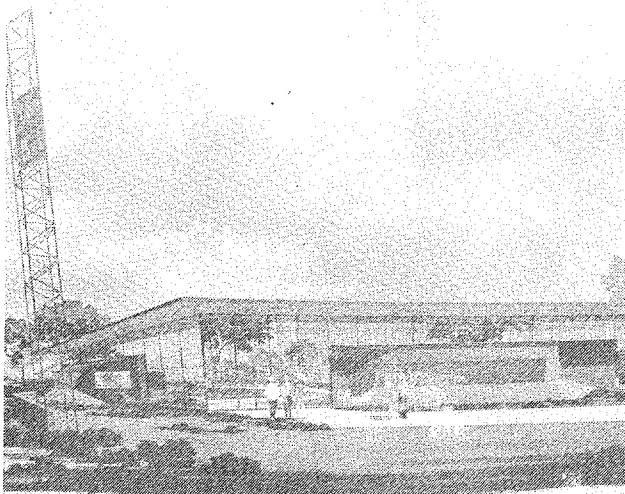
LEGISLATIVE REFERENCE LIBRARY  
STATE OF MINNESOTA

# Other Tourism Grants

**Voyageurs Interpretative Center** — A project of the Minnesota State Historical Society, a \$25,000 grant was allocated to the society to study the feasibility of development of this Center in the International Falls area. Though the money was allocated during the biennium, no action has been taken, to date, on the project.

**William Crooks Locomotive** — To assist the Minnesota State Historical Society in its efforts to move the famed "William Crooks Locomotive" from a location in St. Paul to Duluth's Heritage and Culture Center, the Board expended \$19,184.68. The locomotive is now on permanent exhibition in the railway display at the Center.

**City of Hibbing, Greyhound Bus Interpretative Center** — \$3,900 grant to draw up working drawings of the Center which will tell of the development of the Bus Industry from its beginning on the Iron Range.



**GREYHOUND BUS INTERPRETATIVE CENTER,  
Hibbing, Mn.**

**City of Hibbing, Bennett Park** — A \$4,048.10 grant to develop plans for the restoration of the park.

**East Range Historical Society** — (Now known as Iron Range Historical Society), \$3,000 grant to help in the restoration and recreation of the E.J. Longyear Diamond Drill site.

**Town of Breitung — McKinley State Park** — A \$15,000 grant to help fund the updating of rest rooms and change facilities at McKinley State Park.

**Cook County Tourist Rest Area** — A \$12,000 grant to aid in funding the construction of vault type rest room facilities at Grand Portage and the Gun Flint Trail.

**Lake County Tourist Information Center** — A \$19,000 grant to make possible the moving of an old log building from the Cloquet area to Two Harbors for use as a tourist information Center.

**City of Blackduck** — A \$5,000 grant to be used to develop and construct a tourist rest and information center.

**Village of Buhl** — A \$2,500 matching fund grant for their land management program.

**Koochiching County** — A \$1,043.37 grant for use in the land management program.

# Economic Improvement & Development

Since the beginnings of Iron Range Resources and Rehabilitation, the Agency has been deeply involved in the assistance to the private sector in encouraging the diversification of the economic base of the Iron Range through the funding of industrial development.

The program has had its success and its failures. Many of the firms that sought assistance were high risk ventures that found it difficult to secure financing in the private sector.

Though the division does not provide funds for operating capital it does provide assistance through the purchase of buildings and equipment and entering into lease-purchase agreements with those industries that qualify for funding.

During the last two bienniums, there has been a concerted shift toward funding programs that lead to the human and vocation rehabilitation. The reasoning being that the rehabilitation of the human resources is just as important to the growth of the industrial segment of our society.

## **RAINDUCKER, INCORPORATED, Chisholm, Minnesota**

Additional assistance was given to this firm which manufactures women's and children's outerwear. A branch of Rainducker, Incorporated, of Duluth, the firm employs 60 with annual sales in excess of \$2,000,000.

## **SEAWAY PORT AUTHORITY, Duluth, Minnesota**

The Iron Range Resources and Rehabilitation Board allocated a \$110,000 grant to the Seaway Port Authority to be used in the construction of the Cargill Grain Meal facility. Payment of the grant has been spread over a three year period.

## **COPPER NICKEL GRAVITY MAPPING**

Allocated to the Department of Natural Resources, this \$10,000 grant was used to aid in the funding of a complete mapping of the Copper Nickel development area near Ely, Minnesota.

## **PADDY RICE ADVISORY BOARD**

This \$15,000 grant went to the Minnesota State Department of Agriculture for the development and implementation of a Board which would oversee the development of paddy rice in north-eastern Minnesota.

## **EXISTING LOANS**

### **DULUTH FILTER COMPANY, Duluth, Minnesota**

This firm is involved in the manufacture of three types of filters used in the oil filtration systems of ore boats, over the road trucks, and automobiles.

The company is in the final stages of amortizing a \$26,000 lease-purchase agreement with IRR&R. The company employs a full-time staff of 12 and has annual sales in excess of \$500,000.

### **HILL CITY BUILDING, Hill City, Minnesota**

During the biennium, IRR&R has entered into a lease-purchase agreement with Aitkin County for this structure. The building is now being utilized by Aitkin County as a regional maintenance garage for county vehicles.

**MALTON ELECTRIC COMPANY, Eveleth,  
Minnesota**

Malton Electric Company manufactures transformer enclosures, transfer boxes and various types of metal fabrication for mining companies. These products are distributed in approximately 20 states.

The fabrication plant, located in the Eveleth, Minnesota Industrial Park, employs a staff of 25 with an annual payroll of \$300,000. Estimated gross sales for this year are set at \$750,000.

**POWER-O-PEAT COMPANY, Gilbert and Central  
Lakes, Minnesota**

Established in 1962, the result of an equipment loan from IRR&R, this firm produces blended peat moss, golf course mix and potting soil. Distributed in 40 states, the plant employs a peak season staff of 40 people.

**PUBLISHERS PAPER COMPANY, Virginia,  
Minnesota**

Formerly Cladwood Corporation, the firm manufactures Cladwood Exterior Siding. Since Publishers Paper Company has taken over the Virginia plant, they have expanded their product line to include the manufacturing of desks for commercial sale.

The plant employs a staff of 48 with an annual payroll of \$275,000. Estimated sales in 1976 will be \$700,000.

**RAJALA TIMBER Company, Deer River and  
RAJALA LUMBER COMPANY, Deer River**

Two separate companies under single ownership, these firms are involved in the wood products industry.

The Timber Company employs 40 with an indirect employment of 30 cutters and wood workers. Their estimated sales are approaching the \$2,000,000 mark. This operation is involved in utilizing second-growth timber.

The Lumber Company employs a full-time staff of 12. Gross sales are estimated at \$900,000 for 1976.

Both companies are primarily concerned with dry kilning and custom service work for the framing lumber that is used in mobile homes. They also produce pallets, crating lumber and lumber for furniture manufacturers.

**SAMCO SPORTSWEAR, Crosby, Minnesota**

A branch of a St. Paul based firm, Samco is involved in the manufacturing of snowmobile suits and winter outerwear. Estimated gross sales during the biennium was \$1.5 million. Anticipated sales for 1977 are set at \$800,000.00 Samco employs a full-time staff of 60.

**MESABI DRILL AND TOOL, INCORPORATED,  
Chisholm, Minnesota**

Involved in the production of high speed twist drills, this firm employs a full-time staff of 75 with an estimated payroll of \$550,000. Gross sales total over \$1,000,000 per year.

Listed in its nationwide clientele are Ford Motor Company, General Motors Corporation, Chrysler Corporation and Air Frame. The firm also does extensive business in the iron mining industry.

# Resource and Rehabilitation Grants

**CWDC Industries, Incorporated**  
Virginia, Minnesota — \$100,000  
Grand Rapids, Minnesota — \$50,000

These two grants enabled CWDC Industries to establish permanent facilities for their operations in Virginia and Grand Rapids. Each building houses three work areas for the sheltered industries providing employment for over 40 handicapped in each facility. In addition, both buildings house the Motor Vehicle License Bureaus for their respective areas. Through the four major programs carried on the CWDC Industries in Grand Rapids, Hibbing and Virginia — a total of 395 clients were served in fiscal year 1975. Total receipts for fiscal year 1975-76 totalled \$630,344.00

**EAST RANGE DAY ACTIVITY CENTER, Eveleth, Minnesota, \$35,000**

This grant represents the first payment of a total commitment of \$70,000 to aid in the development of the permanent quarters of the Center. The grant was used to renovate and update a former school in Eveleth to serve the mentally and physically handicapped in a wide area of northeastern Minnesota.

**RANGE CENTER, INCORPORATED, Chisholm, Minnesota — \$10,000**

The grant was used to purchase and furnish equipment for the independent living group home and provide a program for multiply handicapped adults. Eight handicapped adults and two live-in resident counselors occupy the new home. Its goal is to train young adults to live as self-dependently as possible.

**UNITED CEREBRAL PALSY, INCORPORATED, Duluth, Minnesota — \$8,700**

The Cerebral Palsy Center of Duluth is a non-profit organization providing educational and vocational training to cerebral palsy victims in and around the Duluth area. The grant was used to purchase a 15 passenger van equipped with a wheel chair lift that is used to transport those suffering from the disease to various educational and vocational activities in the Duluth area.

**CUYUNA RANGE COMMUNITY CENTER, INCORPORATED, Crosby, Minnesota — \$3,800**

These funds went to aid in the renovation of their Senior Citizens Center in Crosby.

**MINNESOTA HIGHER EDUCATION COORDINATING COMMISSION — \$50,000**

This grant enabled the establishment of an office and staff to develop a study to assess the post-secondary educational needs of northeastern Minnesota and its residents. To plan a program that would meet the present and future educational needs, to design a new delivery system to bring educational programs and opportunities to the region, and to conduct programs through which the combined resources of post-secondary educational institutions in the state are utilized in addressing needs of the region. Established on the campus of Mesabi Community College, Virginia, the program has met with tremendous success.

state of minnesota  
department of  
iron range resources  
and  
rehabilitation

# Financial Report

## Receipts, Transfers, and Expenditures

	1974 - 1975	1975 - 1976
Balance brought forward July 1 .....	\$1,502,174.15	\$1,315,473.76
Receipts from IRR&R Revolving Fund .....	98,122.77	63,299.27
Misc. refunds from prior years' expenditures .....	20.67	9.88
Refund from Minn. Historical Society (Forest History Center) ...	- - - -	5,492.21
Reim. from 8 counties for services of Natural Resources Spec. ...	56,895.25	75,802.04
Reim. from Pollution Control Agency for junk car removal .....	4,065.77	5,000.00
Reim. from CETA for 5 employees .....	4,892.48	27,385.92

## APPROPRIATION:

Taconite Production Tax .....	579,307.49	665,185.35
Taconite Production Tax Reserved for Carlton & Koochiching Counties .....	- - - -	408,089.17
Taconite Occupation Tax (Rec'd in June) .....	504,620.38	960,899.40
Iron Ore Occupation Tax (Rec'd in June) .....	484,903.51	255,174.46
Total - All receipts .....	<u>\$3,235,002.47</u>	<u>\$3,781,811.46</u>

## EXPENDITURES:

### General Support Activity:

Transfer to Dept. of Administration for utilities .....	3,159.88	3,826.76
Salaries, expenses, and supplies for administrative staff and maintenance of office bldg. at Eveleth, Mn. ....	126,001.72	219,351.50
IRR&R Board members expense .....	2,774.74	486.12
Administrative building construction:		
Purchase of land .....	3,106.39	- - - -
Construction contractors .....	702,016.95	14,754.09
Total - General Support .....	\$837,059.68	\$238,418.47

### Forestry Resources Development and Improvement:

Salaries & fringe benefits for 9 Natural Resource Specialists assigned to 8 counties. (See receipts) .....	134,885.18	148,402.49
Salaries, supplies & expense for county assistance .....	85,619.99	95,960.53
Land Management - Itasca and St. Louis Counties (Match. funds) Counties (Match. Funds) .....	32,474.80	- - - -
Total - Forestry Resources Development & Improvement .....	\$252,979.97	\$244,363.02

### Economic Improvement and Development:

Salaries, fringe benefits, and expenses .....	- - - -	14,768.77
Rainducker, Inc., Chisholm, Mn. ....	907.85	725.00
Transfer to Dept. of Agriculture for Paddy Wild Rice Adv. Bd. ...	15,000.00	- - - -
Transfer to DNR for copper-nickel gravity mapping .....	10,000.00	- - - -
Seaway Port Authority of Duluth .....	- - - -	37,000.00
Total - Economic Improvement and Development .....	\$25,907.85	\$52,493.77

	1974 - 1975	1975 - 1976
<b>Resource Rehabilitation Grants:</b>		
CWDC Industries, Inc., Virginia, Mn. ....	50,000.00	50,000.00
CWDC Industries, Inc., Grand Rapids, Mn. ....	25,000.00	25,000.00
Minnesota Higher Education Coord. Commission (Transfer) .....	25,000.00	25,000.00
East Range Day Activity Center, Inc., Eveleth, Mn. ....	— — — —	35,000.00
Cuyuna Range Community Center, Inc., Crosby, Mn. ....	— — — —	3,800.00
Range Center, Inc., Chisholm, Mn. ....	— — — —	10,000.00
United Cerebral Palsy Board of Duluth .....	— — — —	8,700.00
Total — Resource Rehabilitation Grants .....	\$100,000.00	\$157,500.00
<b>Research &amp; Beautification:</b>		
	1974-1975	1975-1976
Salaries & fringe benefits for summer work programs .....	\$40,545.61	\$39,071.14
Salaries, supplies, & expense for administration of junk car removal, land ownership map preparation, peat research, bldg. demolition & trails .....	49,079.88	51,622.07
Building demolition (salaries, supplies & expenses) .....	62,728.31	72,392.64
Multi-use trails (salaries, supplies & expenses) .....	13,862.32	27,529.07
East Mesabi Sanitary Landfill .....	6,000.00	— — — —
Wilderness Valley Farms .....	6,108.61	— — — —
Total — Research and Beautification .....	\$178,324.73	\$190,614.92
<b>Tourism:</b>		
Iron Range Interpretative Center, Chisholm, Mn.:		
Transfer to Dept. of Administration for construction .....	422,400.00	287,730.00
Joseph A. Wetzel Associations (exhibit design) .....	— — — —	221,050.00
Salaries, supplies & expenses (Director & staff) .....	26,740.01	78,761.11
Total — Iron Range Interp. Center .....	449,140.01	\$587,541.11
<b>Grants:</b>		
N.E. Minnesota Tourist Information Center (Bldg.) .....	5,500.00	— — — —
N.E. Minnesota Tourist Information Center (Salaries, exp.) ....	1,833.28	582.18
Itasca County for Old Calumet (Salaries, expenses) .....	2,000.00	— — — —
Minnesota Historical Society—Wm. Crooks locomotive rest. ....	19,184.68	— — — —
Hibbing Community College (Planetarium study) .....	4,230.00	— — — —
Village of Buhl (matching funds) .....	2,500.00	— — — —
Koochiching County (matching funds) .....	1,043.37	— — — —
City of Hibbing, Bennett Park .....	4,048.10	— — — —
Biwabik Heritage Trails Center & Recreation Area .....	10,000.00	— — — —
East Range Historical Society, Hoyt Lakes, Mn. ....	— — — —	3,000.00
City of Hibbing, Greyhound Bus Interp. Center Study .....	— — — —	3,900.00
Bovey Art Center .....	— — — —	2,400.00
Town of Breitung, McKinley Park .....	— — — —	15,000.00
Cook County tourist rest areas .....	— — — —	12,000.00
Lake County tourist information center .....	— — — —	19,000.00
City of Blackduck tourist rest & information area .....	— — — —	5,000.00
Cuyuna Range Development Corp., Gateway Interp. Center ...	— — — —	10,000.00
Minn. Historical Society, Voyageurs Interp. Center .....	— — — —	25,000.00
Total — Grants for tourism projects .....	\$65,339.43	\$126,374.39
Total — Tourism Activities .....	\$514,479.44	\$713,915.50

Omitted from Tourism Grants Section	1974-1975	1975-1976
Minnesota Historical Society		
Forest History Center, Grand Rapids, Mn	15,000.00	30,492.21
(figures included in the totals)		



1974 - 1975

1975 - 1976

## CETA Employees:

IRR&R made initial payment for salaries & fringe benefits with refunds from Federal CETA program.		
General Support Activity .....	1,962.56	621.54
Research and Beautification .....	1,794.93	11,314.57
Forestry History Center, Grand Rapids .....	1,483.31	9,062.86
Iron Range Interpretative Program .....	5,536.24	2,165.24
Total - IRR&R CETA employees .....	<u>\$10,777.04</u>	<u>\$23,704.21</u>
GRAND TOTAL - All Expenditures .....	<u>\$1,919,528.71</u>	<u>\$1,621,009.89</u>
Balance forward July 1 .....	<u>1,315,473.76</u>	<u>2,160,801.57</u>
	<u>\$3,235,002.47</u>	<u>\$3,781,811.46</u>