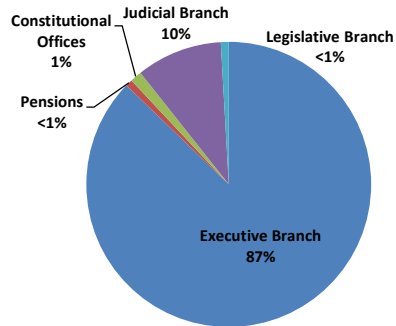


Annual FTE Count by State of MN Branch (FY 2010-20)											
FY	2020	2019	2018	2017	2016	2015	2014	2013	2012	2011	2010
Executive Branch	35,083	34,732	33,993	33,293	32,447	32,482	32,259	31,609	30,017	31,507	31,693
Pensions	308	305	301	295	294	280	276	267	260	258	257
Constitutional Offices	530	527	536	548	543	517	504	488	489	517	534
Judicial Branch	3,923	3,802	3,721	3,669	3,534	3,466	3,366	3,283	3,156	3,115	3,022
Legislative Branch*	365	146	144	142	144	141	141	138	140	144	147
<b>Total</b>	<b>40,208</b>	<b>39,513</b>	<b>38,695</b>	<b>37,947</b>	<b>36,961</b>	<b>36,887</b>	<b>36,546</b>	<b>35,785</b>	<b>34,061</b>	<b>35,541</b>	<b>35,653</b>

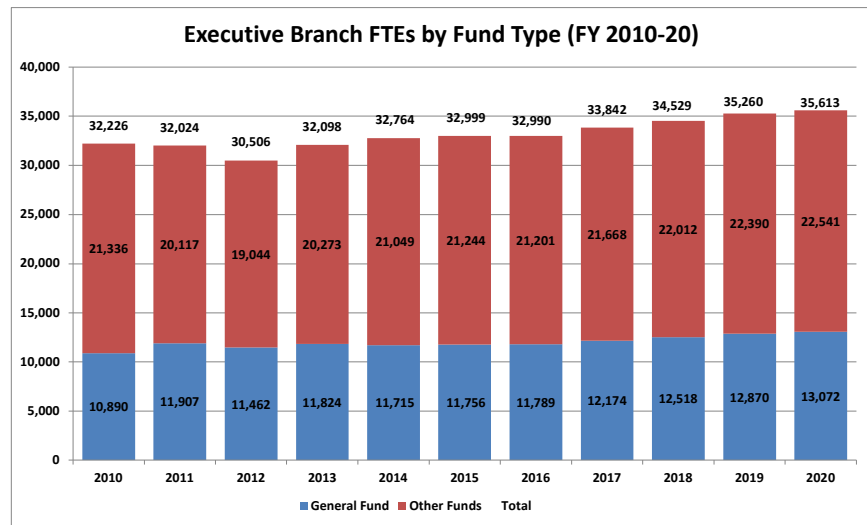
### FY 2020 FTEs by Government Branch



\*As of 2020, the Legislative Branch FTE calculations include the Senate. This adds 208 FTEs to the 2020 Legislature total.

Source: SEMA4 Query BIAA\_FTE\_HISTORY\_FY\_AGENCY

Executive Branch FTEs by Fund Type (FY 2010-20)			
Year	Fund	Other Funds	Total
2010	10,890	21,336	32,226
2011	11,907	20,117	32,024
2012	11,462	19,044	30,506
2013	11,824	20,273	32,098
2014	11,715	21,049	32,764
2015	11,756	21,244	32,999
2016	11,789	21,201	32,990
2017	12,174	21,668	33,842
2018	12,518	22,012	34,529
2019	12,870	22,390	35,260
2020	13,072	22,541	35,613

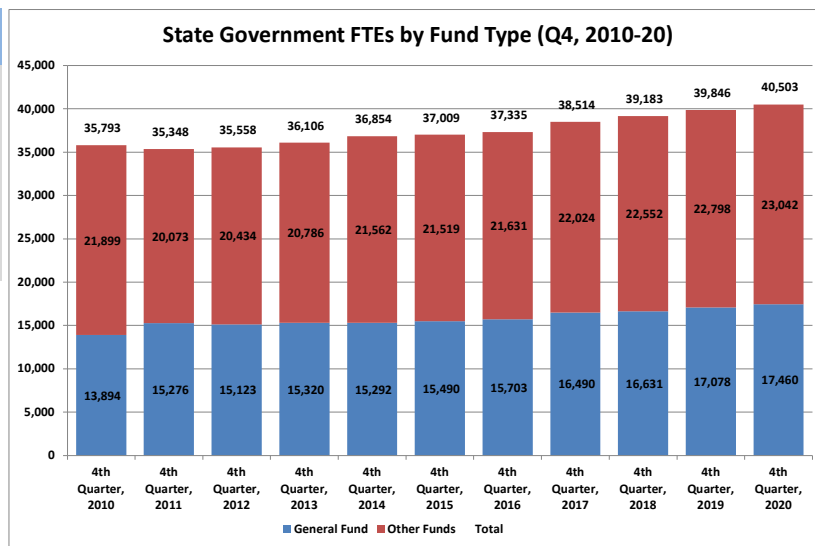


The Executive Branch includes about 75 agencies, commissions and boards as well as four constitutional offices. Minnesota State and the retirement agencies are not included.

Around 40% of FTEs are paid through the state's General Fund. "Other Funds" summarizes about 90 funds including the Trunk Highway Fund, State Lottery, State Park user fees and various other license fees and special revenue funds.

Source: SEMA4 Query BIAA\_FTE\_HISTORY\_FY\_AGENCY

State Government FTEs by Fund Type (Q4, 2010-20)			
Quarter/Year	General Fund	Other Funds	Total
4th Quarter, 2010	13,894	21,899	35,793
4th Quarter, 2011	15,276	20,073	35,348
4th Quarter, 2012	15,123	20,434	35,558
4th Quarter, 2013	15,320	20,786	36,106
4th Quarter, 2014	15,292	21,562	36,854
4th Quarter, 2015	15,490	21,519	37,009
4th Quarter, 2016	15,703	21,631	37,335
4th Quarter, 2017	16,490	22,024	38,514
4th Quarter, 2018	16,631	22,552	39,183
4th Quarter, 2019	17,078	22,798	39,846
4th Quarter, 2020	17,460	23,042	40,503



State Government represents all branches of Minnesota state government including the Executive Branch, Constitutional Offices, Judicial Branch, Legislative Coordinating Commission, Legislative Auditor and three retirement agencies. Minnesota State is not included. Around 40% of FTEs are paid through the state's General Fund. "Other Funds" summarizes about 90 funds including the Trunk Highway Fund, State Lottery, State Park user fees and various other license fees and special revenue funds. Note that the Senate did not appear in FTE calculations until 2020 and accounts for 229 additional FTEs from FY 2019

Source: SEMA4 Query BIAA\_FTE\_HISTORY\_FY\_AGENCY



### Fulltime Equivalent Employment by State Agency- Fiscal Year 2020 Fourth Quarter (April-June)

Executive Summary This report identifies Full Time Equivalencies (FTEs) from a specified quarter. The number does not reflect a headcount, but rather all hours recorded by state employees divided by 40 hours for each week.

Executive Branch	FY 2020- 4th Quarter			FY 2019- 4th Quarter			Change from FY 2019- 4th Quarter		
	General Fund	Other Funds	Total	General Fund	Other Funds	Total	General Fund	Other Funds	Total
Accountancy Board	4.7	0.0	4.7	5.5	0.0	5.5	-0.7	0.0	-0.7
Administration Dept	92.8	442.0	534.8	89.7	426.4	516.1	3.1	15.6	18.6
Administrative Hearings	1.8	57.8	59.6	1.3	62.5	63.8	0.4	-4.7	-4.2
African American Heritage Bd.	4.0	0.0	4.0	3.9	0.0	3.9	0.1	0.0	0.1
Agriculture Dept	181.6	298.3	479.9	188.6	284.4	473.1	-7.0	13.9	6.9
Amateur Sports Comm	2.0	0.0	2.0	2.3	0.6	3.0	-0.4	-0.6	-1.0
Animal Health Board	32.5	11.3	43.8	38.1	1.3	39.4	-5.6	10.0	4.4
Architecture, Engineering Bd	6.2	0.0	6.2	6.4	0.0	6.4	-0.2	0.0	-0.2
Arts Board	4.7	10.1	14.8	8.2	10.5	18.7	-3.6	-0.4	-4.0
Asian-Pacific Council	5.2	0.0	5.2	4.0	0.0	4.0	1.1	0.0	1.1
Barber Examiners Board	2.9	0.0	2.9	2.9	0.0	2.9	0.0	0.0	0.0
Behavioral Hlth & Therapy Bd	0.0	5.0	5.0	0.0	4.9	4.9	0.0	0.1	0.1
Bureau of Mediation Services	11.7	0.0	11.7	12.4	0.0	12.4	-0.7	0.0	-0.7
Campaign Fin & Public Discl Bd	8.0	0.0	8.0	9.0	0.0	9.0	-1.0	0.0	-1.0
Capitol Area Architect	3.4	0.0	3.4	3.3	0.0	3.3	0.1	0.0	0.1
Chiropractors Board	0.0	5.5	5.5	0.0	4.7	4.7	0.0	0.8	0.8
Commerce Dept	159.8	178.0	337.8	162.0	181.1	343.0	-2.2	-3.1	-5.3
Corrections Dept	4080.0	295.2	4375.1	4065.0	320.4	4385.4	15.0	-25.2	-10.3
Cosmetologist Exam Board	26.2	0.0	26.2	25.3	0.0	25.3	0.9	0.0	0.9
Dentistry Board	0.0	10.8	10.8	0.0	9.2	9.2	0.0	1.7	1.7
Dietetics & Nutrition Practice	0.0	0.9	0.9	0.0	0.9	0.9	0.0	0.0	0.0
Disability Council	6.7	0.0	6.7	8.8	0.0	8.8	-2.1	0.0	-2.1
Education Department	143.4	249.6	393.0	142.0	243.5	385.6	1.3	6.1	7.4
Emergency Medical Services Bd	6.2	0.0	6.2	3.7	0.0	3.7	2.5	0.0	2.5
Employ & Econ Development Dept	113.3	1243.7	1357.0	106.8	1190.2	1297.0	6.5	53.4	60.0
Explore Minnesota Tourism	40.9	0.0	40.9	47.5	0.0	47.5	-6.6	0.0	-6.6
Gambling Control Board	0.0	31.2	31.2	0.0	31.0	31.0	0.0	0.1	0.1
Health Department	131.0	1478.8	1609.8	171.4	1337.2	1508.7	-40.4	141.5	101.1
Higher Ed Facilities Authority	0.0	2.0	2.0	0.0	2.0	2.0	0.0	0.0	0.0
Housing Finance Agency	0.0	257.6	257.6	0.0	251.3	251.3	0.0	6.3	6.3
Human Rights Dept	43.1	4.7	47.8	38.4	8.2	46.6	4.8	-3.5	1.3
Human Services Dept	4337.5	2730.9	7068.4	4160.5	2866.6	7027.1	177.0	-135.7	41.3
Indian Affairs Council	4.9	0.0	4.9	4.0	1.1	5.0	1.0	-1.1	-0.1
Investment Board	0.0	23.4	23.4	0.0	21.3	21.3	0.0	2.2	2.2
Iron Range Resources & Rehab	0.0	41.8	41.8	0.0	43.2	43.2	0.0	-1.5	-1.5
Labor & Industry Dept	16.0	412.9	428.9	19.7	407.1	426.8	-3.7	5.8	2.1
Latino Affairs Council	4.3	0.0	4.3	4.4	0.0	4.4	-0.2	0.0	-0.2
Lottery	0.0	145.9	145.9	0.0	150.1	150.1	0.0	-4.2	-4.2
Marriage & Family Therapy	0.0	3.0	3.0	0.0	3.0	3.0	0.0	0.0	0.0
Medical Practice Board	0.0	30.1	30.1	0.0	25.7	25.7	0.0	4.4	4.4
Military Affairs Dept	45.8	352.5	398.3	41.4	362.0	403.4	4.3	-9.5	-5.2
Mn.IT Services	25.5	2466.3	2491.7	13.3	2370.2	2383.5	12.1	96.0	108.2
Mn Management & Budget	148.2	117.0	265.2	146.5	108.0	254.5	1.7	9.0	10.7
Mn State Academies	116.6	56.2	172.8	127.3	52.1	179.4	-10.7	4.1	-6.5
MN Zoological Garden	101.9	107.4	209.3	115.9	129.2	245.1	-14.0	-21.8	-35.9
MNSure	0.0	166.9	166.9	0.0	156.2	156.2	0.0	10.7	10.7
Natural Resources Dept	740.5	1860.7	2601.2	789.2	2022.0	2811.2	-48.7	-161.3	-210.0
Nursing Board	0.0	29.2	29.2	0.0	31.7	31.7	0.0	-2.4	-2.4
Nursing Home Admin Board	0.0	8.1	8.1	0.0	12.2	12.2	0.0	-4.1	-4.1
Occup. Therapy Practice Bd.	0.0	3.2	3.2	0.0	2.0	2.0	0.0	1.2	1.2
Office of Higher Education	24.1	43.2	67.3	26.1	39.4	65.5	-2.0	3.9	1.9
Ombud Mental Health & Dev Dis	18.0	0.0	18.0	20.0	0.0	20.0	-2.0	0.0	-2.0
Ombudsperson for Families	4.2	0.0	4.2	5.0	0.0	5.0	-0.8	0.0	-0.8
Optometry Board	0.0	1.1	1.1	0.0	0.9	0.9	0.0	0.2	0.2
Peace Officers Board (POST)	9.3	0.0	9.3	0.0	10.3	10.3	9.3	-10.3	-1.0
Perpich Ctr for Arts Education	55.0	2.0	57.0	54.8	0.3	55.1	0.1	1.7	1.8
Pharmacy Board	1.0	21.8	22.8	0.0	19.4	19.4	1.0	2.4	3.4
Physical Therapy Board	0.0	2.0	2.0	0.0	2.9	2.9	0.0	-0.9	-0.9
Podiatric Medicine Board	0.0	0.8	0.8	0.0	0.5	0.5	0.0	0.3	0.3
Pollution Control Agency	10.0	852.8	862.8	13.1	839.2	852.3	-3.0	13.6	10.5
Private Detective Board	3.6	0.0	3.6	2.9	0.0	2.9	0.7	0.0	0.7
Prof. Educator Licensing Std. Bd.	21.7	0.0	21.7	19.0	0.0	19.0	2.8	0.0	2.8
Psychology Board	0.0	7.7	7.7	0.0	7.1	7.1	0.0	0.7	0.7
Public Facilities Authority	0.0	11.0	11.0	0.0	10.9	10.9	0.0	0.0	0.0
Public Safety Dept	424.9	1770.4	2195.3	425.0	1684.0	2109.0	-0.1	86.4	86.4
Public Utilities Comm	51.6	0.5	52.1	50.0	0.5	50.5	1.6	0.0	1.7
Racing Commission	0.0	11.9	11.9	0.0	17.4	17.4	0.0	-5.5	-5.5
Revenue Dept	1392.7	98.0	1490.8	1409.9	102.6	1512.5	-17.2	-4.6	-21.7
Sentencing Guidelines Comm	5.8	0.0	5.8	6.0	0.0	6.0	-0.2	0.0	-0.2
Social Work Board	0.0	12.6	12.6	0.0	11.7	11.7	0.0	0.9	0.9
Tax Court	8.0	0.0	8.0	8.5	0.0	8.5	-0.5	0.0	-0.5
Transportation Dept	18.3	5206.8	5225.2	18.9	5094.2	5113.0	-0.5	112.7	112.1
Veterans Affairs Dept	106.9	1189.6	1296.4	100.8	1182.7	1283.4	6.1	6.9	13.0
Veterinary Medicine Board	0.0	2.0	2.0	0.0	1.9	1.9	0.0	0.1	0.1
Water & Soil Resources Board	38.1	81.6	119.7	37.0	82.4	119.4	1.1	-0.8	0.3
Workers Comp Court of Appeals	0.0	11.6	11.6	0.0	10.7	10.7	0.0	1.0	1.0
<b>Total- Executive Branch</b>	<b>12,846.4</b>	<b>22,465.6</b>	<b>35,311.9</b>	<b>12,765.6</b>	<b>22,253.2</b>	<b>35,018.7</b>	<b>80.8</b>	<b>212.4</b>	<b>293.2</b>

#### Constitutional Offices

Attorney General	273.4	45.7	319.1	278.8	47.3	326.0	-5.4	-1.6	-6.9
------------------	-------	------	-------	-------	------	-------	------	------	------



### Fulltime Equivalent Employment by State Agency- Fiscal Year 2020 Fourth Quarter (April-June)

Executive Summary This report identifies Full Time Equivalencies (FTEs) from a specified quarter. The number does not reflect a headcount, but rather all hours recorded by state employees divided by 40 hours for each week.

Executive Branch	FY 2020- 4th Quarter			FY 2019- 4th Quarter			Change from FY 2019- 4th Quarter		
	General Fund	Other Funds	Total	General Fund	Other Funds	Total	General Fund	Other Funds	Total
Governors Office	20.4	33.1	53.4	31.6	14.6	46.2	-11.2	18.5	7.2
Secretary of State	49.5	36.9	86.5	51.4	34.8	86.2	-1.9	2.2	0.3
State Auditor	71.0	6.2	77.2	70.0	5.3	75.3	1.0	0.9	2.0
<b>Total- Constitutional Offices</b>	<b>414.3</b>	<b>121.9</b>	<b>536.2</b>	<b>431.8</b>	<b>101.9</b>	<b>533.7</b>	<b>-17.5</b>	<b>20.0</b>	<b>2.5</b>
<b>Total Executive Branch Including Constitutional Offices</b>	<b>13260.7</b>	<b>22587.5</b>	<b>35848.1</b>	<b>13197.4</b>	<b>22355.1</b>	<b>35552.5</b>	<b>63.3</b>	<b>232.4</b>	<b>295.7</b>
<b>Judicial Branch</b>									
Court of Appeals	88.1	0.0	88.1	90.2	0.0	90.2	-2.2	0.0	-2.2
Guardian ad Litem Board	224.5	0.0	224.5	201.0	0.0	201.0	23.4	0.0	23.4
Judicial Standards Board	2.6	0.0	2.6	2.6	0.0	2.6	0.0	0.0	0.0
Public Defense Board	765.4	1.0	766.4	721.2	0.0	721.2	44.3	1.0	45.3
Supreme Court	242.2	83.8	326.0	234.5	81.2	315.7	7.7	2.6	10.4
Trial Courts	2495.7	53.4	2549.1	2455.9	42.4	2498.3	39.8	11.0	50.8
<b>Total- Judicial Branch</b>	<b>3,818.4</b>	<b>138.2</b>	<b>3,956.6</b>	<b>3,705.4</b>	<b>123.6</b>	<b>3,829.0</b>	<b>113.0</b>	<b>14.6</b>	<b>127.6</b>
<b>Legislative Branch</b>									
Legislative Auditor	59.8	0.0	59.8	58.6	1.8	60.4	1.3	-1.8	-0.6
Legislative Coord. Commission	91.6	8.1	99.7	86.6	8.5	95.1	5.0	-0.4	4.6
Senate	229.9	0.0	229.9	228.7	0.0	228.7	1.2	0.0	1.2
<b>Total- Legislative Branch</b>	<b>381.3</b>	<b>8.1</b>	<b>389.4</b>	<b>373.9</b>	<b>10.3</b>	<b>384.2</b>	<b>7.4</b>	<b>-2.2</b>	<b>5.2</b>
<b>Retirement Agencies</b>									
Minn State Retirement System	0.0	132.4	132.4	0.0	123.7	123.7	0.0	8.7	8.7
Public Employees Retire Assoc	0.0	94.1	94.1	0.0	99.6	99.6	0.0	-5.5	-5.5
Teachers Retirement Assoc	0.0	82.1	82.1	0.0	85.7	85.7	0.0	-3.6	-3.6
<b>Total- Retirement Agencies</b>	<b>0.0</b>	<b>308.6</b>	<b>308.6</b>	<b>0.0</b>	<b>309.0</b>	<b>309.0</b>	<b>0.0</b>	<b>-0.4</b>	<b>-0.4</b>
<b>State Total</b>	<b>17,460.4</b>	<b>23,042.4</b>	<b>40,502.8</b>	<b>17,276.6</b>	<b>22,798.0</b>	<b>40,074.6</b>	<b>183.7</b>	<b>244.4</b>	<b>428.2</b>

Source: SEMA4 Query BIAA\_FTE\_HISTORY\_FY\_AGENCY