



Annual Class Size Study

A Report of Class Size Patterns
2017-2018 School Year

March 2018

Metro ECSU
2 Pine Tree Drive, Suite 101
Arden Hills, Minnesota 55112

612-638-1500
www.metroecs.org

FOREWARD

The Metro ECSU 2017-2018 Class Size Study reports data describing both regional and local norms. We hope that the information contained in this report will be useful to decision makers and interested citizens served by Metro ECSU. Though this data was carefully collected, we wish to caution readers from making assumptions about a district's staffing pattern based on class size statistics alone.

Questions or comments about this report should be directed to Julie Schaal at julie.schaal@metroecsu.org or 612-638-1540.

Julie Frame
Executive Director, Metro ECSU

Cathy Macdonald
Director of Operations, Metro ECSU

Julie Schaal
Angela Skrade
Class Size Study Coordinators, Metro ECSU

TABLE OF CONTENTS

Introduction	4
Glossary of Terms.....	6
Reports with Tables	8
List of Tables.....	9
A. Regionwide Class Size Statistics & Data Observations: Trends.....	10
B. Regionwide Class Size Statistics.....	14
C. Elementary Class Size Statistics & Data Observations.....	19
D. Junior Secondary Class Size Statistics & Data Observations.....	24
E. Senior Secondary Class Size Statistics & Data Observations.....	31
Appendix	38
A. List of Participating Districts	39
B. Memo to District Contacts: Directions for the Annual Class Size Study	40
C. Data Collection Formats (data was collected in Excel)	43

INTRODUCTION

This report describes class size statistics for thirty-six school districts in the metro Twin Cities area that submitted data to Metro ECSU. To enable the reader to interpret this report accurately, it is necessary to describe the report briefly in terms of data collection and reporting procedures.

Sources of Data

The method of collecting class size information was an electronic format. All metro area Superintendents were sent an invitation to authorize participation and appoint a staff member to be in direct contact with Metro ECSU staff for the study.

District contacts received the “Memo to District Contacts: Directions for the Annual Class Size Study” (pages 40-42) and three Excel spreadsheet formats (pages 43-45), one for each school type (elementary, junior secondary, and senior secondary). The designated contact person appointed by the Superintendent in each district was responsible for collecting data from each building in the district, aggregating the data in each Excel file, and returning the data to Metro ECSU for data processing and analysis. More details about this process are available in the memo located in the Appendix of this document.

Organization of the Report

For an overview, please refer to the Table of Contents at the beginning of the study. The Class Size Study contains a glossary (pages 6-7) which should be read prior to viewing the tables. The study contains an introduction, a middle section with tables and results, and a summary section. The “Reports with Tables” section consists of statistical highlights for metro schools aggregated as “regionwide” data and by school type—elementary, junior secondary, and senior secondary. The highlights represent regional norms for all class size categories and are calculated by aggregating local data plus reports focusing on elementary, junior secondary, and senior secondary programs.

Data were reported in some cases excluding special education students, and, in others, including special education students. It should also be noted that consistent grade groupings have not been used for each district. (Of special note here is the fact that grades 5 and 6 may be included with elementary or junior secondary data depending upon local district configuration.)

Limitations

The following considerations should be taken into account when reviewing data in the Annual Class Size Study:

- Class size data included in this report are based on fall student counts submitted as of October 1, 2017.

- At the junior and senior secondary levels, no attempt has been made to include all subjects offered by all schools; only subject areas that are most typically offered at the secondary level have been included.

It is tempting to interpret inter-district comparisons in terms of relationships which suggest cause and effect. The reader should be careful in making such comparisons. Class size data among school districts will be different due to many factors, including educational philosophy, school facility design, school district organizations, economic stability, school district size, management methods, and utilization of specialists or paraprofessionals in conjunction with professional staff. Although the descriptions contained within the tables of this report demonstrate normative comparisons, the data reported simply describe *what* exists, not *why* differences exist among the districts.

GLOSSARY OF TERMS

1. Average (Mean) Class Size

Average (Mean) Class Size represents the class size which equals the arithmetic average of class sizes reported. The average is the total of reported class sizes divided by the number of classes reported. Averages are reported to the nearest one hundredth.

2. Class Size

Class Size refers to the number of students in a group or class organized for the purpose of instruction.

3. Class Size Range

Class Size Range represents the maximum and minimum class sizes reported for a given grade or subject area.

4. Class Types

Class Types counted for this study differ for each school type. Class types for each are as follows:

Elementary	Junior Secondary	Senior Secondary
Kindergarten	Art	Art
Grade 1	Business Ed/Marketing	Business Ed/Marketing
Grade 2	Family & Consumer Science	Family & Consumer Science
Grade 3	Health Education	Health Education
Grade 4	Interdisciplinary Courses	Language Arts/English
Grade 5	Language Arts/English	Math
Grade 6	Math	Music
Special Education	Music	Physical Education
Combo or Ungraded	Physical Education	Science
	Science	Social Studies
	Social Studies	Special Education
	Special Education	Technology Ed/Computer Science
	Technology Ed/Computer Science	Work Experience Program
	World Languages	World Languages

5. Elementary

This grouping *may* include the following grades: K, 1, 2, 3, 4, 5, and 6. Combination grades/ungraded and special education classes may also be included. Depending on individual district grade organization, “elementary” *may not* include grades 5 or 6.

6. Grade Group

Grade Groups include the school types—elementary, junior secondary, and senior secondary, but also part of and combinations of those school type groups. For example, some of the data is reported for a combination of junior and senior secondary as one grade group.

7. Junior Secondary

Junior Secondary includes students in middle schools, junior high schools, or the first part of an eight-year secondary program (i.e., grades 5-12).

8. Participating Districts

Participating Districts includes school districts in the metro Twin Cities area that submitted data for the current year of the study. These districts may or may not be members of Metro ECSU.

9. School Type

School Types for this study are Elementary, Junior Secondary, and Senior Secondary.

10. Senior Secondary

Senior Secondary includes students in senior high school or in the second part of an eight-year secondary program (i.e., grades 5-12).

REPORTS WITH TABLES

LIST OF TABLES

Table		Page
1	Elementary Regionwide Class Size Trends.....	11
2	Jr. Secondary Regionwide Class Size Trends.....	12
3	Sr. Secondary Regionwide Class Size Trends.....	13
4	Class Size Regionwide by Class Type.....	15
5	Class Size Regionwide by Grade Group (Excluding Special Education).....	16
6	Class Size Regionwide by Grade Group (Including Special Education).....	16
7	Average Class Size by Grade Group (Excluding Special Education).....	17
8	Average Class Size by Grade Group (Including Special Education).....	18
9	Elementary Average Class Size by Class Type.....	20
10	Elementary Maximum/Minimum Class Size by Class Type.....	22
11	Jr. Secondary Average Class Size by Class Type.....	25
12	Jr. Secondary Maximum/Minimum Class Size by Class Type.....	28
13	Sr. Secondary Average Class Size by Class Type.....	32
14	Sr. Secondary Maximum/Minimum Class Size by Class Type.....	35

A. REGIONWIDE CLASS SIZE STATISTICS & DATA OBSERVATIONS: TRENDS

The regionwide class size averages by class type from the last five years were included in the study. The graphs include data from the 2013-14 school year through the 2017-18 school year.

Table 1 (page 11) reports the average Elementary class sizes for each year by class type. The following trends were observed:

- This year 3rd Grade reported a five-year-low class size.
- This year Special Ed reported a five-year-high class size.
- The average class size consistently increases by grade level.

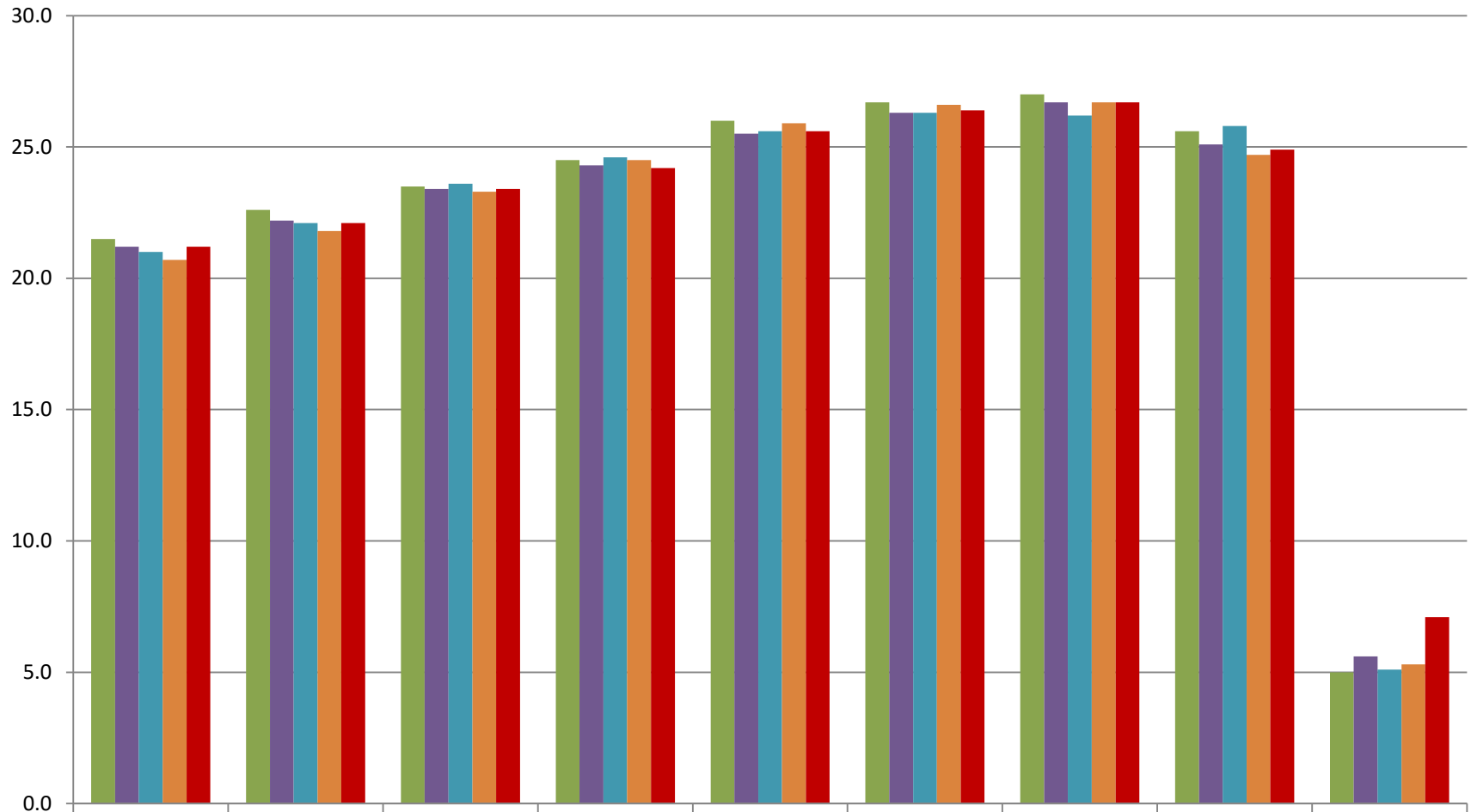
Table 2 (page 12) reports the average Jr. Secondary class sizes for each year by class type. The following trends were observed:

- This year Language Arts/English, Math, Physical Education, Science, and World Languages reported a five-year-high class size.
- Of the core subjects, Language Arts/English and Math are consistently lower in class size than Science and Social Studies.

Table 3 (page 13) reports the average Sr. Secondary class sizes for each year by class type. The following trends were observed:

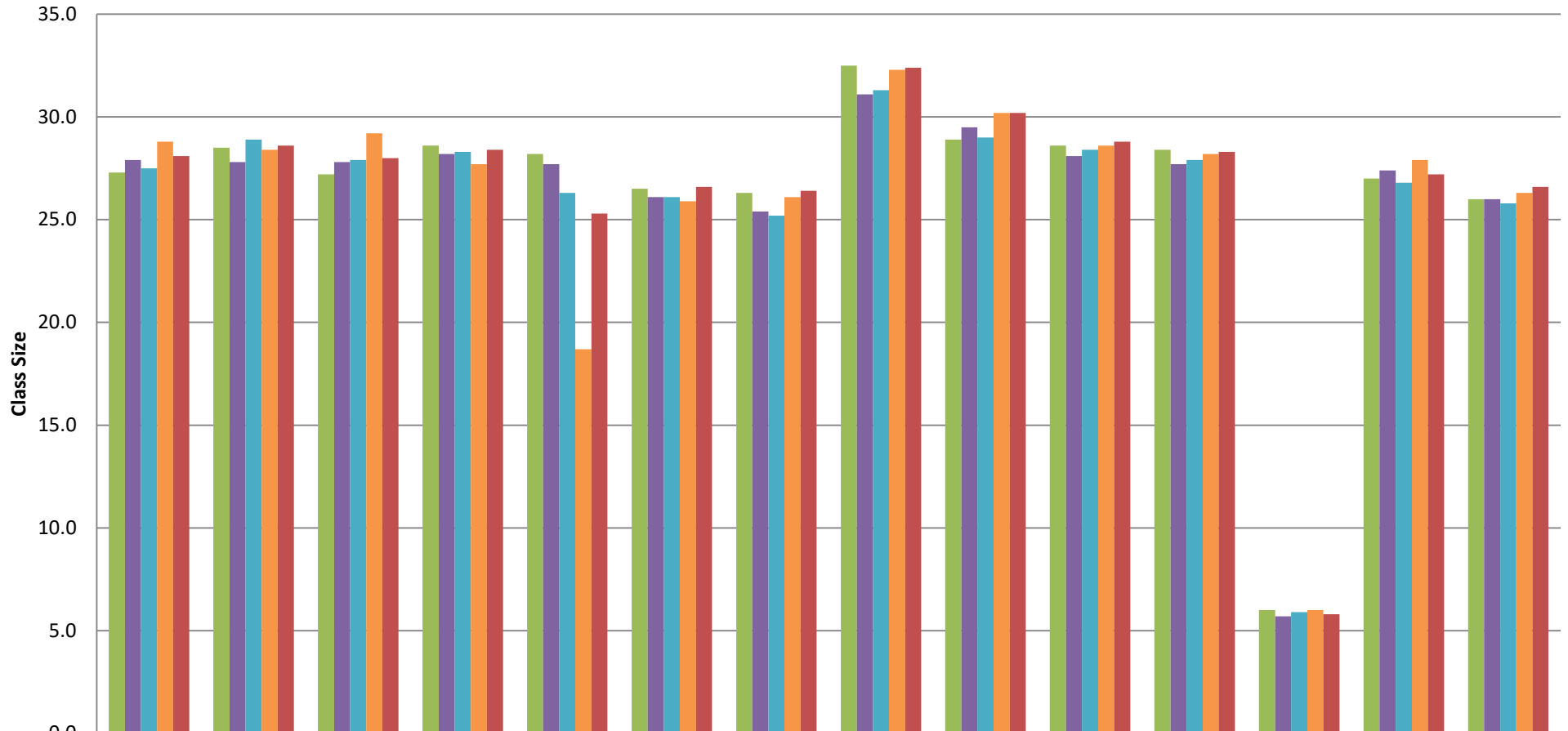
- This year Music reported a five-year-high class size.
- This year Business Ed/Marketing, and Work Exp Program reported a five-year-low class size.

Table 1. Elementary Regionwide Class Size Trends



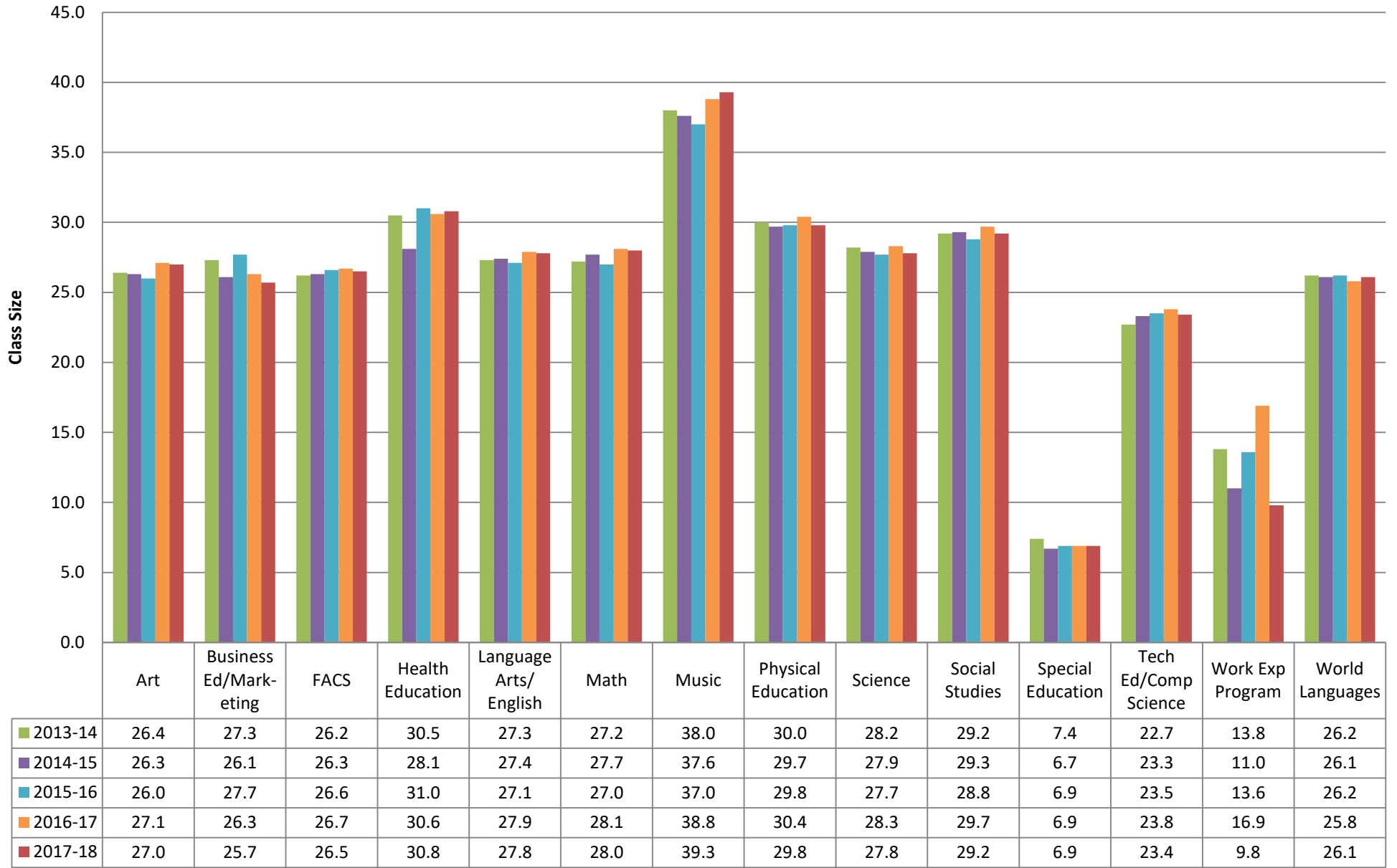
	Kindergarten	1st Grade	2nd Grade	3rd Grade	4th Grade	5th Grade	6th Grade	Combo or Ungraded	Special Ed
■ 2013-14	21.5	22.6	23.5	24.5	26.0	26.7	27.0	25.6	5.0
■ 2014-15	21.2	22.2	23.4	24.3	25.5	26.3	26.7	25.1	5.6
■ 2015-16	21.0	22.1	23.6	24.6	25.6	26.3	26.2	25.8	5.1
■ 2016-17	20.7	21.8	23.3	24.5	25.9	26.6	26.7	24.7	5.3
■ 2017-18	21.2	22.1	23.4	24.2	25.6	26.4	26.7	24.9	7.1

Table 2. Jr Secondary Regionwide Class Size Trends



	Art	Business Ed/Marketing	FACS	Health Education	Interdisciplinary Courses	Language Arts/English	Math	Music	Physical Education	Science	Social Studies	Special Education	Tech Ed/Comp Science	World Languages
■ 2013-14	27.3	28.5	27.2	28.6	28.2	26.5	26.3	32.5	28.9	28.6	28.4	6.0	27.0	26.0
■ 2014-15	27.9	27.8	27.8	28.2	27.7	26.1	25.4	31.1	29.5	28.1	27.7	5.7	27.4	26.0
■ 2015-16	27.5	28.9	27.9	28.3	26.3	26.1	25.2	31.3	29.0	28.4	27.9	5.9	26.8	25.8
■ 2016-17	28.8	28.4	29.2	27.7	18.7	25.9	26.1	32.3	30.2	28.6	28.2	6.0	27.9	26.3
■ 2017-18	28.1	28.6	28.0	28.4	25.3	26.6	26.4	32.4	30.2	28.8	28.3	5.8	27.2	26.6

Table 3. Sr Secondary Regionwide Class Size Trends



B. REGIONWIDE CLASS SIZE STATISTICS

Averages and class size ranges for specific school types and selected subject areas for the participating districts as a whole are reported in Table 4 (page 15). Summary data for the entire region excluding special education and including special education are shown in Table 5 and Table 6 (page 16) respectively.

Average class size data by selected grade groupings (i.e., Elementary, Junior Secondary, Senior Secondary, Junior and Senior Secondary combined, and for all K - 12) for class sizes excluding special education and including special education are shown in Table 7 (page 17) and Table 8 (page 18) respectively. Individual district data are available in these tables by district number (see key on page 39).

Table 4. Class Size Regionwide by Class Type

Elementary

Class Type	Avg.	Min.	Max.
Kindergarten	21.2	10	28
Grade 1	22.1	13	31
Grade 2	23.4	16	30
Grade 3	24.2	14	32
Grade 4	25.6	14	34
Grade 5	26.4	16	35
Grade 6	26.7	16	34
Combo or Ungraded	24.9	12	31
Special Education	7.1	1	18

Jr Secondary

Class Type	Avg.	Min.	Max.
Art	28.1	1	59
Business Ed/Marketing	28.6	9	37
Family & Consumer Science	28.0	6	37
Health Education	28.4	9	42
Interdisciplinary Courses	25.3	1	59
Language Arts/English	26.6	2	43
Math	26.4	3	46
Music	32.4	4	135
Physical Education	30.2	6	50
Science	28.8	1	43
Social Studies	28.3	9	40
Special Education	5.8	1	25
Technology Ed/Computer Science	27.2	7	59
World Languages	26.6	4	43

Sr Secondary

Class Type	Avg.	Min.	Max.
Art	27.0	5	39
Business Ed/Marketing	25.7	1	39
Family & Consumer Science	26.5	5	38
Health Education	30.8	10	41
Language Arts/English	27.8	5	46
Math	28.0	1	43
Music	39.3	2	157
Physical Education	29.8	7	56
Science	27.8	3	43
Social Studies	29.2	5	43
Special Education	6.9	1	36
Technology Ed/Computer Science	23.4	2	39
Work Experience Program	9.8	1	49
World Languages	26.1	2	43

Table 5. Class Size Regionwide by Grade Group (Excluding Special Education)

	Avg.	Min.	Max.
Elementary	23.8	10	35
Jr Secondary	28.1	1	135
Sr Secondary	28.1	1	157

Table 6. Class Size Regionwide by Grade Group (Including Special Education)

	Avg.	Min.	Max.
Elementary	23.6	1	35
Jr. Secondary	26.1	1	135
Sr. Secondary	25.8	1	157

Table 7. Average Class Size by Grade Group (Excluding Special Education)

Elementary		Jr Secondary		Sr Secondary		Jr & Sr Secondary		K-12	
Dist.	Avg.	Dist.	Avg.	Dist.	Avg.	Dist.	Avg.	Dist.	Avg.
277	21.00	717	25.10	111	24.86	717	25.46	717	25.28
271	21.32	197	25.44	278	24.96	625	26.08	625	25.83
276	22.27	625	25.56	716	25.61	111	26.26	276	25.95
717	22.64	271	26.25	832	26.05	278	26.37	111	25.96
721	22.80	281	26.38	717	26.05	276	26.50	716	26.12
200	22.97	15	26.66	276	26.26	832	26.52	832	26.16
281	23.01	283	26.71	625	26.47	716	26.57	278	26.21
624	23.04	276	26.72	110	26.49	271	26.71	271	26.37
282	23.17	270	26.79	14	26.75	283	26.96	283	26.57
197	23.26	832	26.99	271	26.94	14	27.09	281	26.68
719	23.29	6	27.09	277	26.98	6	27.15	277	26.69
272	23.34	14	27.35	6	27.21	277	27.27	6	26.74
270	23.35	273	27.51	283	27.25	15	27.29	14	26.81
831	23.45	272	27.54	282	27.34	281	27.36	270	26.83
110	23.57	277	27.56	624	27.49	197	27.46	624	26.96
278	23.68	111	27.61	200	27.54	270	27.57	197	26.98
283	23.71	624	27.85	279	27.77	624	27.67	15	26.98
834	23.85	622	27.85	13	27.87	110	27.72	110	27.08
833	23.87	716	28.06	281	28.18	282	27.93	272	27.17
6	23.97	280	28.07	15	28.22	200	28.03	282	27.41
111	24.00	831	28.07	272	28.78	273	28.17	200	27.56
14	24.00	278	28.12	280	28.79	272	28.22	273	27.73
13	24.03	720	28.31	273	28.80	280	28.49	831	27.74
716	24.06	200	28.49	622	29.20	622	28.58	13	28.00
279	24.10	192	28.79	270	29.21	13	28.61	622	28.00
623	24.14	282	28.80	721	29.26	831	28.71	280	28.11
622	24.22	110	28.90	720	29.30	279	28.89	279	28.22
192	24.27	13	29.54	719	29.40	720	28.90	623	28.66
832	24.44	279	30.29	831	29.62	192	29.52	192	28.75
273	24.46	719	30.30	623	29.70	719	29.82	719	28.82
625	24.51	623	30.50	834	29.85	721	29.86	720	28.90
194	24.51	721	30.57	194	30.19	623	30.05	721	28.90
15	25.25	834	30.82	197	30.40	834	30.34	834	29.51
280	25.96	194	31.21	833	30.50	194	30.65	194	29.82
12	26.10	833	31.84	192	30.64	833	31.16	833	30.05
Reg wide	23.80	12	33.29	12	30.85	12	31.92	12	31.01
		Reg wide	28.13	Reg wide	28.06	Reg wide	28.09	Reg wide	27.52

Table 8. Average Class Size by Grade Group (Including Special Education)

Elementary		Jr Secondary		Sr Secondary		Jr & Sr Secondary		K-12	
Dist.	Avg.	Dist.	Avg.	Dist.	Avg.	Dist.	Avg.	Dist.	Avg.
277	21.00	717	22.23	278	19.36	278	21.76	278	21.85
271	21.32	625	22.71	717	21.85	717	22.08	717	22.11
6	21.79	270	23.09	111	22.51	625	23.18	625	23.33
110	21.99	15	23.19	716	22.74	716	23.26	716	23.38
276	22.27	277	23.47	625	23.53	270	23.52	270	23.50
719	22.29	197	23.49	110	23.63	277	23.85	277	23.62
721	22.35	14	23.97	277	24.26	14	24.11	14	23.98
14	22.48	716	24.04	14	24.30	111	24.12	111	24.10
717	22.64	831	24.18	270	24.42	281	24.51	281	24.31
200	22.97	281	24.42	272	24.49	197	24.55	272	24.39
281	23.01	283	24.60	281	24.58	272	24.64	197	24.42
624	23.04	280	24.69	279	24.71	283	24.80	283	24.68
282	23.17	720	24.80	282	24.85	280	24.91	110	24.77
197	23.26	272	24.82	276	24.88	15	25.04	831	24.85
272	23.34	278	25.25	283	25.01	831	25.11	280	25.04
270	23.35	111	25.70	280	25.07	110	25.25	15	25.07
831	23.45	622	25.92	832	25.44	282	25.44	282	25.21
194	23.45	194	26.12	13	25.45	279	25.68	276	25.37
278	23.68	271	26.25	624	25.61	720	25.73	279	25.49
283	23.71	832	26.29	194	25.92	276	25.81	832	25.63
834	23.85	282	26.30	197	25.92	832	25.87	194	25.71
833	23.87	6	26.51	720	26.38	194	26.01	720	25.73
192	23.99	276	26.72	831	26.53	13	26.38	6	25.89
111	24.00	110	26.89	6	26.70	624	26.40	624	25.91
13	24.03	279	26.90	721	26.80	6	26.60	13	26.11
716	24.06	624	27.27	271	26.94	271	26.71	271	26.37
279	24.10	273	27.51	622	27.46	622	26.74	622	26.44
623	24.14	13	27.66	200	27.54	721	27.44	721	26.79
622	24.22	721	28.20	12	28.10	200	28.03	200	27.56
625	24.27	200	28.49	15	28.22	273	28.17	273	27.73
832	24.44	192	28.79	719	28.40	719	28.81	719	27.80
273	24.46	719	29.28	273	28.80	192	29.52	623	28.66
15	25.25	623	30.50	623	29.70	12	29.80	192	28.70
280	25.96	834	30.82	834	29.85	623	30.05	12	29.27
12	26.10	833	31.84	833	30.50	834	30.34	834	29.51
Reg wide	23.60	12	32.15	192	30.64	833	31.16	833	30.05
		Reg wide	26.14	Reg wide	25.84	Reg wide	25.98	Reg wide	25.69

C. ELEMENTARY CLASS SIZE STATISTICS & DATA OBSERVATIONS

Elementary class size data are reported for each participating district for grades K, 1, 2, 3, 4, 5, 6, combo or ungraded, and Special Education.

Table 9 (pages 20-21) reports the average class sizes for each school district. Districts are ranked from low to high according to the average calculated.

Table 10 (pages 22-23) reports class size maximums and minimums for each school district. Districts are ranked from low to high based upon the maximum class size.

Individual districts that did not submit data required for these tables were excluded from that portion of a table.

Data observations:

- Average class size generally increases with grade level.
- Regionwide, elementary settings most commonly end with 5th grade.
- Average class size shows wide variability across districts.
- Class size range shows wide variability across districts.

Table 9. Elementary Average Class Size by Class Type

Kindergarten		Grade 1		Grade 2		Grade 3		Grade 4	
Dist.	Avg.	Dist.	Avg.	Dist.	Avg.	Dist.	Avg.	Dist.	Avg.
271	18.58	277	18.63	277	20.50	271	21.45	110	22.08
282	19.00	272	19.69	111	21.17	270	22.89	271	22.56
272	19.09	13	20.09	282	21.20	111	23.00	277	23.13
721	19.31	717	20.20	271	21.62	282	23.00	270	23.25
6	19.50	624	20.35	283	21.75	624	23.10	197	23.50
277	19.56	271	20.70	276	21.77	276	23.29	276	23.89
13	19.60	281	20.73	200	22.00	719	23.52	200	23.93
623	19.93	716	20.83	15	22.29	273	23.61	192	24.50
278	20.00	831	20.85	719	22.36	281	23.70	717	24.50
717	20.17	194	20.94	270	22.40	277	23.71	719	24.55
624	20.27	834	21.12	273	22.44	833	23.71	721	24.62
831	20.40	15	21.20	721	22.57	623	23.74	281	24.74
276	20.45	721	21.21	278	22.86	200	23.92	832	24.78
14	20.50	111	21.25	279	23.09	6	24.00	282	25.00
716	20.50	719	21.52	272	23.19	625	24.00	14	25.10
832	20.50	197	21.53	716	23.33	831	24.06	831	25.11
281	20.55	283	21.69	833	23.41	272	24.07	283	25.29
834	20.77	622	21.79	13	23.60	110	24.25	272	25.38
719	21.07	623	21.88	623	23.71	717	24.33	624	25.39
833	21.19	278	22.33	281	23.73	192	24.38	278	25.75
279	21.30	276	22.39	192	23.80	834	24.40	623	26.04
622	21.44	833	22.49	717	23.80	721	24.50	625	26.19
273	21.76	192	22.67	622	23.81	194	24.53	6	26.20
110	21.79	200	22.77	625	23.81	197	24.59	833	26.27
12	21.86	279	22.78	6	23.82	279	24.82	280	26.38
15	21.86	6	22.90	831	23.82	622	24.86	834	26.48
270	22.05	12	23.25	110	24.38	14	25.00	279	26.54
200	22.15	110	23.33	197	24.44	280	25.23	273	26.72
192	22.35	832	23.50	832	24.50	283	25.71	13	26.90
197	22.58	273	23.53	624	24.57	278	25.88	622	27.08
283	22.69	625	23.75	194	24.83	15	26.33	194	27.34
625	22.71	270	24.00	834	24.95	832	26.75	111	27.75
194	22.81	282	24.17	14	25.00	12	26.95	716	28.25
280	24.86	14	24.75	12	25.05	716	28.25	15	30.09
Reg wide	21.20	280	25.67	280	25.58	13	28.38	12	30.13
		Reg wide	22.14	Reg wide	23.40	Reg wide	24.20	Reg wide	25.62

Table 9. Elementary Average Class Size by Class Type

Grade 5		Grade 6		Combo or Ungraded		Special Education	
Dist.	Avg.	Dist.	Avg.	Dist.	Avg.	Dist.	Avg.
276	23.06	270	23.88	276	19.75	110	2.00
271	23.47	716	25.00	13	20.00	192	4.50
281	24.93	831	25.19	271	20.67	14	5.00
624	25.30	272	28.32	280	22.50	194	5.64
270	25.35	623	28.77	278	22.75	719	6.10
716	25.40	Reg wide	26.71	833	23.40	625	6.30
273	25.67			623	24.00	721	10.00
831	25.71			624	25.00	6	11.86
278	25.75			622	25.25	Reg wide	7.05
283	25.86			625	25.27		
110	25.92			192	25.91		
721	25.92			273	26.22		
623	26.55			719	26.83		
625	26.60			Reg wide	24.92		
834	26.62						
272	26.63						
832	26.78						
279	26.88						
622	26.93						
194	27.07						
833	27.10						
719	27.23						
192	27.24						
13	27.67						
6	28.30						
111	28.75						
280	28.83						
15	28.87						
282	30.00						
12	31.12						
Reg wide	26.44						

Table 10. Elementary Maximum/Minimum Class Size by Class Type

Kindergarten			Grade 1			Grade 2			Grade 3			Grade 4		
Dist.	Max	Min	Dist.	Max	Min	Dist.	Max	Min	Dist.	Max	Min	Dist.	Max	Min
282	19	19	13	21	19	111	22	21	111	24	22	277	25	22
277	20	19	277	21	15	277	22	19	282	24	22	717	25	24
278	20	20	716	21	20	282	22	21	717	25	22	832	25	24
832	21	21	717	21	19	15	24	20	110	26	22	197	26	20
717	21	20	111	22	20	271	24	17	200	26	21	278	26	25
721	21	17	272	22	17	278	24	22	271	26	14	282	26	24
272	22	15	278	23	22	283	24	17	277	26	22	110	27	20
716	22	17	832	24	24	716	24	22	14	27	23	192	27	21
110	23	20	15	24	19	717	24	23	15	27	25	200	27	21
271	23	15	194	24	18	832	25	25	272	27	20	270	27	19
6	23	18	197	24	19	110	25	23	276	27	15	111	28	27
834	23	18	281	24	15	200	25	19	278	27	25	14	28	22
13	24	15	283	24	19	273	25	19	624	27	17	271	28	17
14	24	16	721	24	19	6	25	23	719	27	18	6	28	24
15	24	20	834	24	18	721	25	20	721	27	22	721	28	20
200	24	20	110	25	22	270	26	17	831	27	19	272	29	21
273	24	19	200	25	22	272	26	19	832	27	26	273	29	25
281	24	15	271	25	16	276	26	17	834	27	22	276	29	14
624	24	17	6	25	21	719	26	18	192	28	20	281	29	19
833	24	11	624	25	15	12	27	19	194	28	18	283	29	21
12	25	19	12	26	18	192	27	20	197	28	21	624	29	18
192	25	18	14	26	23	279	27	16	280	28	22	623	30	19
276	25	12	192	26	21	622	27	20	281	28	19	716	30	25
279	25	15	273	26	21	624	27	21	283	28	23	719	30	22
719	25	19	276	26	15	197	28	19	6	28	21	834	30	22
194	26	20	623	26	15	281	28	18	833	28	17	194	31	24
197	26	19	719	26	19	623	28	18	273	29	20	279	31	16
283	26	19	833	26	19	625	28	16	716	29	27	280	31	24
622	26	18	279	27	13	833	28	17	12	30	25	622	31	23
623	26	10	622	27	18	834	28	21	13	30	27	831	31	18
625	27	16	831	27	18	14	29	23	270	30	18	15	32	28
831	27	14	270	28	20	194	29	21	279	30	15	625	33	17
270	28	15	280	29	20	280	29	22	623	30	16	833	33	19
280	28	21	625	30	17	831	29	16	622	32	20	12	34	25
			282	31	21	13	30	19	625	32	17	13	34	22
Reg wide	28	10				Reg wide	30	16	Reg wide	32	14	Reg wide	34	14

Table 10. Elementary Maximum/Minimum Class Size by Class Type

Grade 5			Grade 6			Combo or Ungraded			Special Education		
Dist.	Max	Min	Dist.	Max	Min	Dist.	Max	Min	Dist.	Max	Min
716	26	25	716	26	24	13	20	20	110	3	1
110	27	24	270	28	19	271	22	18	14	6	4
271	28	16	831	30	16	278	23	22	192	6	3
283	28	23	623	32	25	280	23	22	719	7	5
832	28	25	272	34	23	276	24	16	625	8	3
273	29	23	Reg wide 34	16		624	25	25	721	12	9
276	29	17				623	26	22	194	14	1
721	29	23				622	27	22	6	18	5
111	30	27				719	28	26	Reg wide 18	1	
270	30	21				833	28	12			
278	30	24				192	30	20			
281	30	19				273	30	21			
282	30	30				625	31	12			
6	30	26				Reg wide 31	12				
624	30	18									
834	30	24									
13	31	26									
622	31	23									
719	31	22									
15	32	24									
192	32	24									
194	32	24									
272	32	21									
279	32	19									
623	32	22									
831	32	18									
833	32	18									
280	33	26									
625	33	18									
12	35	26									
Reg wide 35	16										

D. JUNIOR SECONDARY CLASS SIZE STATISTICS & DATA OBSERVATIONS

Junior secondary class size data are reported for each participating district in selected subject areas (see page 6 in the Glossary of Terms for a list).

Table 11 (page 25-27) reports the average class sizes for each school district. Districts are ranked from low to high according to the average calculated.

Table 12 (pages 28-30) reports class size maximums and minimums for each school district. Districts are ranked from low to high based upon the maximum class size.

Individual districts that did not submit data required for these tables were excluded from that portion of a table.

Data observations:

- The highest average class sizes regionwide are Music and Physical Education.
- Of the core subjects, Language Arts/English and Math are lower in class size than Science and Social Studies.
- Average class size shows wide variability across districts.
- Class size range shows wide variability across districts.

Table 11. Jr Secondary Average Class Size by Class Type

Art		Business Ed/Marketing		Family & Consumer Science		Health Education		Interdisciplinary Courses	
Dist.	Avg.	Dist.	Avg.	Dist.	Avg.	Dist.	Avg.	Dist.	Avg.
111	18.00	14	9.00	717	24.33	276	25.19	276	15.00
15	23.31	720	20.75	282	25.00	110	25.42	111	16.33
717	24.65	831	27.00	276	25.26	200	25.63	278	20.44
110	25.33	280	28.40	110	25.67	271	25.70	13	25.32
197	25.36	192	28.50	625	25.93	15	26.60	277	28.88
282	25.40	6	30.11	270	26.00	625	26.91	14	30.45
276	26.18	716	30.50	831	26.07	832	27.56	271	31.13
832	26.45	719	30.75	624	27.47	14	27.81	Reg wide	25.27
831	26.60	625	34.75	192	27.60	720	27.86		
720	26.85	Reg wide	28.64	720	27.67	717	28.50		
200	26.93			273	27.74	192	28.64		
271	26.96			281	27.81	624	28.87		
272	27.00			6	28.00	272	29.00		
283	27.18			622	28.31	719	29.39		
625	27.33			271	28.35	270	29.75		
273	27.63			832	28.50	623	29.83		
270	27.67			200	28.88	280	31.17		
6	27.94			623	29.90	622	31.19		
13	28.11			194	30.29	279	31.34		
281	28.17			719	30.35	721	31.50		
624	28.24			716	30.75	12	31.60		
719	28.55			279	30.92	834	32.50		
14	28.70			12	32.00	Reg wide	28.38		
622	28.79			Reg wide	28.03				
279	28.81								
721	29.08								
277	29.17								
192	29.57								
194	30.00								
623	30.33								
716	31.00								
833	32.19								
280	32.83								
834	32.89								
12	33.67								
278	34.35								
Reg wide	28.14								

Table 11. Jr Secondary Average Class Size by Class Type

Language Arts/English		Math		Music		Physical Education		Science	
Dist.	Avg.	Dist.	Avg.	Dist.	Avg.	Dist.	Avg.	Dist.	Avg.
14	21.14	717	19.75	281	23.51	197	25.11	15	25.40
625	23.65	283	22.72	277	24.43	271	25.56	6	26.03
271	24.46	716	22.82	623	25.33	717	25.73	270	26.11
622	24.66	271	22.86	197	25.44	832	26.52	717	26.48
720	25.04	625	23.93	625	26.67	272	26.88	832	26.63
15	25.18	273	24.13	271	28.09	283	27.45	277	26.67
6	25.30	277	24.18	283	28.87	270	28.27	276	26.69
283	25.41	282	24.44	276	28.88	6	29.00	281	26.83
197	25.43	622	24.54	279	29.59	279	29.19	271	26.84
13	25.85	197	24.83	272	29.84	625	29.23	624	27.07
281	25.94	15	24.92	622	30.57	624	29.24	200	27.10
280	26.00	6	25.23	624	30.84	111	29.33	110	27.11
270	26.15	111	25.29	720	31.35	281	29.78	625	27.23
624	26.25	281	25.30	15	31.57	716	30.00	716	27.67
276	26.31	270	25.75	717	32.65	200	30.35	283	27.85
273	26.57	832	26.19	270	33.44	194	30.40	197	27.87
200	26.61	276	26.47	14	33.68	719	30.55	273	28.14
716	26.67	272	26.48	834	33.80	282	30.67	831	28.31
278	26.77	280	26.58	6	34.43	276	30.88	280	28.50
717	26.81	831	26.72	719	34.71	720	30.92	192	28.76
832	26.87	720	26.81	192	34.91	110	30.96	278	28.88
110	26.94	192	26.81	273	35.42	278	31.13	721	28.88
272	27.12	200	26.86	833	36.70	280	31.50	111	29.00
111	27.17	721	27.12	13	37.44	721	31.73	622	29.08
277	27.24	719	27.14	831	38.00	14	31.78	282	29.20
192	27.36	623	27.18	280	39.40	277	31.94	272	29.25
721	27.94	14	27.45	111	40.75	15	32.18	14	29.74
831	28.08	110	27.72	282	41.25	622	32.31	834	29.76
834	28.29	624	27.84	200	42.06	833	32.34	720	29.88
282	29.13	278	28.33	278	43.05	834	33.25	719	30.75
194	29.73	194	28.47	110	44.26	623	33.45	13	31.04
833	29.87	834	29.11	194	48.77	831	34.75	279	31.43
279	30.25	833	29.16	12	49.67	12	35.57	623	32.00
719	30.61	13	29.29	721	96.17	13	40.70	194	32.12
623	30.66	279	30.93	Reg wide	32.41	Reg wide	30.22	833	32.97
12	32.44	12	32.78					12	33.49
Reg wide	26.64	Reg wide	26.36					Reg wide	28.79

Table 11. Jr Secondary Average Class Size by Class Type

Social Studies		Special Education		Technology Ed/Computer Science		World Languages	
Dist.	Avg.	Dist.	Avg.	Dist.	Avg.	Dist.	Avg.
717	22.97	716	2.58	197	20.80	278	16.45
197	25.20	278	3.11	270	21.80	625	19.41
15	25.46	15	3.63	625	23.94	14	22.56
831	25.95	282	3.82	717	24.32	272	24.24
271	26.09	624	3.92	13	25.00	276	24.79
276	26.18	277	3.98	831	25.22	270	24.83
625	26.35	110	4.26	276	25.54	624	24.96
6	26.40	197	4.55	192	25.57	281	25.12
273	26.79	270	5.20	6	25.60	831	25.74
280	26.85	831	5.22	273	25.65	283	25.87
200	27.15	832	5.25	271	25.74	273	26.26
832	27.18	717	5.26	622	25.93	282	26.43
281	27.24	719	5.28	110	25.94	271	27.42
277	27.33	283	5.29	281	26.05	720	27.46
622	27.58	720	5.49	719	26.25	110	27.50
716	27.67	194	5.50	15	26.32	6	27.64
270	27.78	281	5.64	200	26.76	717	28.00
278	27.96	721	5.72	832	26.83	832	28.00
282	28.00	272	5.75	720	27.21	192	28.92
721	28.30	14	5.78	111	27.67	280	29.00
283	28.41	279	6.02	282	28.00	721	29.08
272	28.67	625	6.64	721	28.00	622	29.67
624	28.73	111	6.88	14	28.54	279	29.67
192	28.81	622	6.93	12	28.67	197	29.86
111	29.40	6	7.29	272	28.80	623	30.30
834	29.51	280	7.97	623	28.85	719	30.70
110	29.70	13	10.11	283	28.95	833	31.17
194	30.19	12	13.13	277	29.00	13	34.00
13	31.24	Reg wide	5.76	279	29.42	834	34.20
279	31.26			624	29.52	12	34.54
720	31.35			280	30.00	Reg wide	26.63
12	31.36			834	30.26		
719	31.62			833	30.58		
623	31.85			194	31.56		
833	32.31			716	31.58		
Reg wide	28.31			278	33.38		
				Reg wide	27.20		

Table 12. Jr Secondary Maximum/Minimum Class Size by Class Type

Art			Business Ed/Marketing			Family & Consumer Science			Health Education			Interdisciplinary Courses		
Dist.	Max	Min	Dist.	Max	Min	Dist.	Max	Min	Dist.	Max	Min	Dist.	Max	Min
111	19	17	14	9	9	717	27	16	276	26	16	276	15	15
282	28	23	720	22	20	282	28	22	200	29	21	111	28	8
717	28	22	280	30	25	110	31	21	717	29	28	277	32	25
110	30	21	716	32	29	270	32	23	110	30	17	14	36	20
272	30	23	192	33	26	625	32	13	272	32	25	271	38	20
15	31	1	831	33	17	716	32	30	832	32	21	13	47	7
200	31	21	6	34	23	831	32	6	270	33	26	278	59	1
721	31	25	719	35	21	200	33	18	720	33	22	Reg wide	59	1
197	32	13	625	37	32	273	33	24	721	33	30			
276	32	21	Reg wide	37	9	276	33	17	12	35	27			
277	32	26				281	33	23	14	35	19			
281	32	21				6	33	22	15	35	15			
716	32	30				832	33	20	271	35	19			
831	32	16				12	34	28	280	35	26			
832	32	21				192	34	19	623	35	20			
194	33	24				194	34	27	624	35	22			
283	33	19				623	34	19	719	35	24			
14	34	23				720	34	12	834	35	29			
270	34	23				271	35	17	192	36	9			
273	34	14				622	35	23	622	36	27			
6	34	11				624	35	16	279	39	12			
624	34	21				719	35	23	625	42	10			
720	34	19				279	37	15	Reg wide	42	9			
192	35	23				Reg wide	37	6						
271	35	11												
280	35	29												
623	35	15												
719	35	23												
834	35	30												
622	36	23												
12	38	26												
13	38	13												
279	38	5												
625	39	6												
833	39	11												
278	59	25												
Reg wide	59	1												

Table 12. Jr Secondary Maximum/Minimum Class Size by Class Type

Language Arts/English			Math			Music			Physical Education			Science		
Dist.	Max	Min	Dist.	Max	Min	Dist.	Max	Min	Dist.	Max	Min	Dist.	Max	Min
277	31	22	277	30	15	623	33	18	717	29	21	717	31	18
717	31	21	276	32	14	277	35	13	716	31	29	111	32	24
270	32	14	721	32	20	281	36	15	272	32	12	272	32	22
272	32	16	270	33	14	283	42	16	721	34	30	276	32	16
276	32	16	716	33	12	197	43	10	270	35	20	282	32	26
716	32	21	717	33	3	622	43	14	271	35	19	721	32	23
832	32	19	832	33	13	270	47	22	283	35	12	832	32	15
197	33	18	111	34	7	276	47	14	6	35	17	110	33	20
278	33	7	272	34	15	624	47	14	111	36	22	270	33	15
721	33	23	278	34	22	717	47	22	280	36	27	277	33	13
834	33	22	281	34	9	719	47	19	282	36	25	283	33	17
13	34	16	283	34	8	15	50	12	624	36	14	197	34	18
14	34	7	197	35	13	272	51	11	832	36	14	271	34	16
200	34	20	280	35	20	271	52	12	14	37	26	273	34	15
281	34	8	623	35	8	720	55	17	276	37	16	280	34	22
283	34	7	624	35	6	14	56	14	281	37	16	192	35	19
110	35	15	719	35	11	279	56	9	719	37	17	281	35	18
111	35	18	110	36	19	280	58	27	110	38	25	623	35	22
192	35	17	14	36	20	834	60	17	197	38	16	716	35	21
280	35	18	192	36	11	273	61	13	277	38	27	13	36	17
622	35	4	200	36	16	282	62	28	831	39	29	15	36	1
624	35	11	271	36	10	13	63	9	200	40	14	278	36	24
15	36	14	622	36	7	111	64	24	278	41	24	719	36	19
271	36	10	273	37	9	200	64	11	194	42	16	720	36	17
273	36	10	720	37	14	110	65	21	279	42	12	200	37	11
6	36	14	15	38	14	12	65	38	623	42	21	6	37	20
623	36	14	831	38	14	625	66	4	12	43	27	622	37	16
282	37	22	834	38	24	833	66	11	15	43	19	624	37	15
719	37	20	12	39	23	831	68	14	622	44	17	831	37	13
720	37	12	282	39	6	6	69	10	625	44	6	834	37	19
12	38	23	6	39	11	192	77	12	833	44	16	14	38	22
194	38	18	833	39	10	194	87	14	720	46	13	12	40	28
831	39	10	13	40	17	278	91	23	13	48	33	194	40	19
833	39	10	625	42	4	721	135	67	834	50	25	833	40	21
625	41	2	194	46	6	Reg wide 135		4	Reg wide 50		6	279	41	14
279	43	14	279	46	12							625	43	8
Reg wide 43			Reg wide 46									Reg wide 43		

Table 12. Jr Secondary Maximum/Minimum Class Size by Class Type

Social Studies			Special Education			Technology Ed/Computer Science			World Languages		
Dist.	Max	Min	Dist.	Max	Min	Dist.	Max	Min	Dist.	Max	Min
717	27	12	282	6	2	282	29	27	278	19	4
282	31	23	717	6	3	717	29	17	14	29	13
832	31	20	278	7	1	831	29	20	282	29	24
721	32	22	716	7	1	110	30	15	721	31	26
110	33	27	110	8	1	719	30	21	110	32	24
111	33	24	283	9	2	13	31	19	272	32	11
197	33	17	624	9	2	276	31	18	276	32	12
200	33	17	719	9	2	277	31	26	832	32	21
272	33	18	832	9	3	721	31	25	197	33	24
834	33	27	15	10	1	192	32	19	270	33	17
273	34	17	270	10	1	197	32	13	280	33	27
277	34	12	272	10	2	272	32	26	717	33	23
278	34	20	720	10	1	832	32	17	13	34	34
283	34	17	197	11	2	111	33	20	192	34	19
15	35	14	281	11	2	273	33	13	281	34	18
271	35	14	6	11	3	281	33	16	283	34	16
280	35	16	14	12	1	283	33	19	831	34	5
281	35	15	277	13	1	716	33	30	271	35	12
622	35	18	721	13	1	200	34	19	273	35	14
192	36	19	111	15	4	270	34	14	624	35	13
623	36	21	194	15	1	280	34	24	622	36	23
624	36	18	279	15	1	625	34	10	623	36	19
716	36	17	831	15	1	720	34	18	719	36	19
719	36	22	13	16	5	833	34	24	720	36	11
720	36	19	280	16	2	15	35	14	6	37	19
831	36	12	622	18	1	271	35	12	625	37	6
6	37	20	625	23	1	622	35	15	833	38	16
13	38	25	12	25	6	623	35	20	12	39	23
194	38	17	Reg wide	25	1	834	35	22	834	39	32
270	38	18				6	36	12	279	43	12
276	38	15				624	36	18	Reg wide	43	4
12	39	20				12	37	10			
279	39	14				14	37	19			
625	39	9				194	38	20			
833	40	16				279	38	7			
Reg wide	40	9				278	59	22			
						Reg wide	59	7			

E. SENIOR SECONDARY CLASS SIZE STATISTICS & DATA OBSERVATIONS

Senior secondary class size data are reported for each participating district in selected subject areas (see page 6 in the Glossary of Terms for a list).

Table 13 (pages 32-34) reports the average class sizes for each school district. Districts are ranked from low to high according to the average calculated.

Table 14 (pages 35-37) reports class size maximums and minimums for each school district. Districts are ranked from low to high based upon the maximum class size.

Individual districts that did not submit data required for these tables were excluded from that portion of a table.

Data observations:

- The highest average class sizes regionwide are Health Education and Music.
- Of the core subjects, Language Arts/English, Math, and Science are lower in class size than Social Studies.
- Average class size shows wide variability across districts.
- Class size range shows wide variability across districts.

Table 13. Sr Secondary Average Class Size by Class Type

Art		Business Ed/Marketing		Family & Consumer Science		Health Education		Language Arts/English	
Dist.	Avg.	Dist.	Avg.	Dist.	Avg.	Dist.	Avg.	Dist.	Avg.
110	20.88	110	17.75	831	21.11	272	25.89	717	24.39
200	23.00	625	18.29	281	21.21	111	26.00	14	24.50
716	23.33	281	20.75	194	22.20	279	26.62	276	24.57
280	23.41	271	21.55	717	22.40	273	27.44	111	24.58
832	24.20	833	21.68	270	22.50	277	28.00	278	25.13
717	24.33	194	23.53	110	23.13	624	28.29	832	25.48
276	24.58	192	24.00	197	24.44	110	29.00	625	25.89
273	24.80	276	24.18	271	24.76	721	29.00	277	25.97
282	25.00	200	24.33	832	24.80	832	29.67	200	25.98
277	25.20	273	24.42	111	25.00	623	29.80	272	26.16
15	25.56	279	24.68	622	25.18	197	29.83	110	26.77
6	25.71	14	24.71	282	25.67	278	30.50	282	26.96
272	26.00	111	25.33	625	25.79	717	31.00	271	27.04
281	26.29	277	25.89	6	25.88	271	31.13	624	27.64
625	26.30	283	26.56	279	26.04	720	31.35	283	27.70
271	26.33	717	26.60	273	26.13	625	31.71	716	27.95
721	26.64	622	26.71	720	26.61	282	31.75	279	28.14
624	26.93	719	26.85	200	27.00	270	31.86	13	28.20
14	27.20	720	27.24	280	27.17	12	32.29	6	28.30
833	27.22	12	27.40	624	27.19	200	32.83	192	28.34
279	27.44	278	27.54	276	27.93	194	32.89	623	28.44
719	27.47	716	27.60	272	28.06	280	33.20	280	28.59
270	27.50	280	28.71	719	28.78	281	33.47	273	28.62
283	27.71	6	29.00	192	29.00	719	33.62	622	28.74
278	27.73	624	29.00	15	29.25	622	34.00	834	29.07
13	27.74	197	29.33	833	29.50	834	34.00	719	29.10
192	28.22	272	29.93	14	30.14	13	35.00	281	29.15
834	28.40	623	30.29	721	30.27	831	38.50	270	29.20
622	28.86	721	30.33	623	30.73	Reg wide	30.80	721	29.23
831	29.00	270	30.70	12	31.70			12	29.79
111	29.50	15	31.08	13	35.17			194	30.13
197	30.25	13	31.33	Reg wide	26.53			831	30.31
720	30.33	831	33.00					720	30.66
194	30.71	834	33.60					833	31.11
623	31.75	Reg wide	25.72					15	31.19
12	32.33							197	31.45
Reg wide	27.03							Reg wide	27.82

Table 13. Sr Secondary Average Class Size by Class Type

Math		Music		Physical Education		Science		Social Studies	
Dist.	Avg.	Dist.	Avg.	Dist.	Avg.	Dist.	Avg.	Dist.	Avg.
111	21.38	14	26.83	834	20.55	13	23.58	111	25.80
716	24.44	622	27.60	111	23.00	278	24.10	717	26.04
278	24.46	280	28.83	110	24.67	717	24.68	716	26.41
717	24.58	832	29.00	273	25.71	111	25.44	624	27.05
6	24.59	625	29.66	832	25.90	277	25.76	278	27.09
277	25.03	197	32.82	624	25.94	271	26.07	15	27.23
110	25.21	278	32.88	278	26.00	282	26.15	276	27.32
832	25.89	283	33.38	6	26.65	276	26.47	271	27.33
282	26.00	276	34.47	194	27.21	625	26.51	282	27.38
283	26.16	13	35.00	276	27.25	15	26.74	277	27.47
271	26.55	271	35.31	270	27.67	110	26.75	13	27.49
281	26.71	281	36.81	15	28.39	283	26.98	6	27.60
15	27.00	110	37.33	717	28.42	832	27.03	283	28.02
625	27.16	200	38.55	280	28.89	624	27.13	273	28.44
200	27.39	277	41.00	622	29.03	200	27.35	832	28.61
624	27.48	833	41.21	279	29.28	279	27.41	270	28.70
279	27.60	831	41.67	833	29.30	12	27.44	110	28.75
280	27.63	624	42.00	272	29.93	272	27.61	200	28.75
276	28.03	279	42.16	716	30.00	270	28.06	719	28.84
13	28.21	719	43.46	200	30.44	6	28.09	281	28.84
273	28.46	270	44.27	625	30.74	273	28.24	279	29.02
270	28.65	273	44.42	271	31.04	716	28.40	625	29.13
14	29.21	272	44.85	283	31.09	721	28.43	14	29.17
12	29.25	111	45.25	721	31.31	834	28.45	831	30.03
831	29.31	194	48.32	281	31.33	14	28.52	272	30.08
721	29.33	834	48.79	14	31.63	831	28.57	834	30.34
719	29.36	6	48.86	277	31.86	281	29.04	720	30.57
197	29.84	282	49.00	282	32.00	192	29.28	192	30.61
192	29.90	721	49.33	831	32.07	719	29.59	194	30.71
272	29.93	720	51.46	12	32.70	194	29.61	721	31.03
194	30.13	717	53.20	623	32.95	623	29.64	622	31.35
623	30.14	12	55.82	720	33.52	280	29.76	197	31.42
834	30.23	192	70.00	192	34.00	197	29.91	833	31.47
720	30.42	Reg wide	39.28	197	34.84	622	30.40	623	31.75
622	30.51			719	36.54	720	30.50	280	32.49
833	31.16			13	40.00	833	31.97	12	32.82
Reg wide	28.03			Reg wide	29.79	Reg wide	27.80	Reg wide	29.18

Table 13. Sr Secondary Average Class Size by Class Type

Special Education		Technology Ed/Computer Science		Work Experience Program		World Languages	
Dist.	Avg.	Dist.	Avg.	Dist.	Avg.	Dist.	Avg.
278	2.28	111	15.33	278	1.00	278	21.11
270	3.48	278	16.60	720	3.00	14	21.96
716	3.80	832	17.75	14	3.75	6	22.42
110	4.03	281	19.41	832	5.50	831	23.17
717	4.14	270	20.40	721	6.60	111	23.43
277	4.52	720	20.57	110	7.25	625	23.52
111	4.70	625	20.79	716	7.25	716	23.71
282	4.83	622	21.33	717	8.00	282	23.87
720	5.67	276	21.77	272	10.20	276	24.42
831	5.97	717	22.00	279	10.74	717	24.43
624	6.33	200	22.33	625	11.00	832	24.70
194	6.39	271	22.53	12	12.33	272	25.10
279	6.55	716	23.13	13	14.00	283	25.10
197	6.92	831	23.38	192	23.00	623	25.14
276	7.02	283	24.00	622	25.50	720	25.34
272	7.16	194	24.10	271	42.33	270	25.35
283	7.26	624	24.18	Reg wide	9.79	281	25.57
281	7.69	279	24.26			624	25.87
719	7.70	192	25.00			271	25.88
721	7.86	719	25.00			200	26.13
14	7.97	623	25.53			721	26.43
625	8.33	110	26.00			110	26.79
622	8.67	833	26.15			719	26.90
280	8.85	277	26.33			280	26.91
12	9.14	15	26.50			279	27.15
832	9.22	282	26.75			622	27.77
6	9.50	721	26.85			833	28.06
13	12.13	14	27.33			197	28.11
Reg wide	6.86	197	27.83			273	28.20
		273	28.00			277	29.12
		272	28.86			192	29.50
		13	30.13			13	29.73
		280	30.50			834	29.98
		12	31.36			194	30.44
		834	34.00			15	30.56
		Reg wide	23.35			12	31.18
						Reg wide	26.09

Table 14. Sr Secondary Maximum/Minimum Class Size by Class Type

Art			Business Ed/Marketing			Family & Consumer Science			Health Education			Language Arts/English		
Dist.	Max	Min	Dist.	Max	Min	Dist.	Max	Min	Dist.	Max	Min	Dist.	Max	Min
716	25	21	110	22	12	281	26	15	111	26	26	111	29	16
200	27	17	277	29	17	111	28	23	272	30	23	717	30	17
721	29	18	200	30	15	282	28	22	277	30	25	832	31	18
276	30	10	276	31	15	717	28	17	623	31	29	276	32	12
110	31	9	717	31	19	200	30	22	717	31	31	273	33	19
111	31	28	111	32	19	720	30	17	721	32	27	272	34	15
273	31	14	14	32	18	831	30	10	832	32	24	282	34	16
832	31	12	194	32	10	15	31	27	278	33	27	110	35	16
272	32	5	272	33	24	6	31	22	720	33	22	12	35	21
278	32	19	283	33	15	110	32	15	110	34	18	14	35	10
283	32	19	720	33	18	194	32	16	12	35	29	200	35	13
6	32	9	12	34	21	272	32	25	273	35	16	270	35	18
14	33	17	192	34	8	276	32	20	282	35	28	278	35	7
15	33	16	273	34	11	279	32	16	624	35	17	623	35	15
192	33	16	281	34	8	721	32	27	13	36	33	716	35	24
277	33	15	6	34	24	832	32	18	197	36	19	720	35	15
280	34	9	623	34	26	197	33	11	270	36	24	721	35	11
717	34	14	625	34	1	270	33	12	200	37	24	277	36	7
720	34	16	721	34	28	14	34	21	834	37	33	283	36	14
834	34	20	15	35	27	192	34	19	271	38	23	624	36	15
270	35	16	624	35	21	623	34	24	279	38	10	831	36	19
279	35	10	716	35	10	280	35	11	281	38	22	15	37	10
282	35	8	834	35	32	622	35	8	622	38	27	192	38	13
622	35	15	197	36	24	13	36	34	194	39	26	194	38	13
197	36	19	270	36	16	273	36	21	280	39	28	271	38	11
623	36	26	622	36	16	719	36	22	719	39	20	279	38	10
624	36	17	719	36	13	833	36	20	831	40	37	281	38	11
12	37	26	833	36	10	12	37	24	625	41	16	6	38	13
281	37	15	271	37	11	624	37	15	Reg wide 41 10			622	38	7
194	38	19	279	37	14	625	37	5				719	38	15
719	38	16	831	37	27	271	38	14				833	38	12
831	38	12	13	38	22	Reg wide 38 5						197	39	21
833	38	11	278	39	14							280	39	13
13	39	8	280	39	15							13	42	15
271	39	11	Reg wide 39 1									625	42	5
625	39	5										834	46	12
Reg wide 39 5												Reg wide 46 5		

Table 14. Sr Secondary Maximum/Minimum Class Size by Class Type

Math			Music			Physical Education			Science			Social Studies		
Dist.	Max	Min	Dist.	Max	Min	Dist.	Max	Min	Dist.	Max	Min	Dist.	Max	Min
277	32	13	14	41	12	111	27	20	276	30	14	717	30	19
278	33	10	280	42	16	832	32	14	717	31	15	832	33	15
716	33	11	13	48	24	273	33	14	111	32	17	273	34	13
276	34	13	622	50	15	278	33	20	272	32	16	276	34	10
200	35	16	197	52	15	717	33	16	12	33	17	110	35	20
273	35	10	832	57	10	272	34	20	14	33	13	111	35	16
283	35	11	277	58	18	276	34	11	832	33	18	14	35	20
717	35	10	278	59	2	624	35	12	110	34	12	270	35	15
110	36	14	283	60	17	721	35	18	200	34	13	283	35	17
12	36	3	111	62	30	110	36	17	273	34	11	716	35	10
14	36	17	276	65	16	15	36	12	277	34	9	200	36	14
270	36	20	200	66	10	282	36	30	278	34	3	282	36	15
281	36	8	624	68	9	834	36	10	720	34	16	6	36	16
624	36	11	271	69	14	279	37	19	192	35	16	624	36	14
720	36	20	833	70	11	6	37	18	6	35	13	720	36	15
832	36	15	12	71	15	622	37	12	623	35	19	15	37	11
834	36	18	720	71	23	716	37	20	716	35	15	272	37	21
13	37	5	270	72	16	200	38	18	15	36	13	277	37	12
15	37	13	831	72	13	270	38	13	197	36	20	278	37	14
197	37	19	281	75	11	280	38	17	624	36	15	623	37	18
272	37	18	282	75	21	720	38	25	13	37	10	12	38	17
279	37	11	834	81	28	12	39	26	270	37	14	271	38	11
282	37	13	110	83	16	281	39	12	282	37	13	719	38	13
6	37	12	719	83	11	623	39	12	283	37	15	831	38	15
622	37	7	721	83	12	831	39	19	834	37	16	13	39	13
623	37	17	717	85	26	194	40	10	271	38	11	194	39	6
192	38	18	273	95	16	271	40	11	279	38	10	197	39	24
721	38	8	279	97	7	283	40	18	280	38	17	279	39	14
111	39	5	192	103	47	277	41	24	281	38	8	281	39	13
280	39	15	625	117	10	625	41	7	622	38	11	833	39	16
719	39	18	6	151	8	833	41	11	719	38	13	192	40	15
831	39	12	272	155	15	14	42	24	194	39	14	622	40	17
833	40	10	194	157	10	197	42	19	831	39	15	721	42	20
194	41	5	Reg wide 157 2			13	45	35	833	39	14	834	42	19
625	42	1				192	48	20	721	42	10	280	43	12
271	43	11				719	56	27	625	43	4	625	43	5
Reg wide 43 1						Reg wide 56 7			Reg wide 43 3			Reg wide 43 5		

Table 14. Sr Secondary Maximum/Minimum Class Size by Class Type

Special Education			Technology Ed/Computer Science			Work Experience Program			World Languages		
Dist.	Max	Min	Dist.	Max	Min	Dist.	Max	Min	Dist.	Max	Min
717	6	3	111	20	12	278	1	1	717	31	11
716	7	1	832	26	12	720	5	2	720	31	7
278	8	1	276	27	11	14	6	2	278	32	3
110	9	1	278	27	7	717	8	8	6	32	12
282	9	1	281	27	5	832	8	3	721	32	18
720	9	3	110	28	24	716	14	2	110	33	16
270	10	1	282	29	25	272	15	7	282	33	11
277	10	1	717	29	18	110	17	1	832	33	12
831	11	1	272	30	28	12	17	6	270	34	14
111	12	1	716	30	15	721	20	1	276	34	15
276	12	5	720	30	8	625	22	4	277	34	20
6	13	5	831	30	10	192	23	23	14	35	5
719	13	5	192	31	18	13	25	1	192	35	17
194	14	1	270	31	14	279	27	1	272	35	6
832	14	5	719	31	13	622	28	23	279	35	7
14	16	1	721	31	18	271	49	33	716	35	16
272	16	1	14	32	23	Reg wide	49	1	719	35	10
281	16	1	200	32	9				111	36	11
721	17	1	623	32	9				15	36	20
197	18	2	273	33	20				200	36	7
280	18	2	283	33	15				283	36	4
279	19	1	833	33	11				623	36	15
283	19	1	197	34	14				831	36	3
624	20	1	279	34	11				273	37	13
12	21	1	624	34	15				280	37	9
622	21	1	834	34	34				281	37	7
625	30	1	15	35	15				12	38	16
13	36	1	277	35	20				622	38	8
Reg wide	36	1	622	35	10				624	38	13
			12	36	27				834	38	14
			13	36	17				197	39	15
			280	36	27				194	40	9
			194	38	10				271	40	11
			625	38	2				833	40	10
			271	39	11				625	41	2
			Reg wide	39	2				13	43	16
									Reg wide	43	2

APPENDIX

36 PARTICIPATING DISTRICTS

Alphabetical Listing

716 Belle Plaine
271 Bloomington
12 Centennial
13 Columbia Heights
272 Eden Prairie
273 Edina
192 Farmington
831 Forest Lake
14 Fridley
200 Hastings
270 Hopkins
717 Jordan
194 Lakeville
832 Mahtomedi
276 Minnetonka
721 New Prague
622 North St. Paul-Maplewood-Oakdale
278 Orono
279 Osseo
719 Prior Lake-Savage
280 Richfield
281 Robbinsdale
623 Roseville
720 Shakopee
282 St. Anthony-New Brighton
15 St. Francis
283 St. Louis Park
625 St. Paul
6 South St. Paul
833 South Washington County
834 Stillwater
110 Waconia
111 Watertown-Mayer
197 West St. Paul
277 Westonka
624 White Bear Lake

District Number Listing

6 South St. Paul
12 Centennial
13 Columbia Heights
14 Fridley
15 St. Francis
110 Waconia
111 Watertown-Mayer
192 Farmington
194 Lakeville
197 West St. Paul
200 Hastings
270 Hopkins
271 Bloomington
272 Eden Prairie
273 Edina
276 Minnetonka
277 Westonka
278 Orono
279 Osseo
280 Richfield
281 Robbinsdale
282 St. Anthony-New Brighton
283 St. Louis Park
622 North St. Paul-Maplewood-Oakdale
623 Roseville
624 White Bear Lake
625 St. Paul
716 Belle Plaine
717 Jordan
719 Prior Lake-Savage
720 Shakopee
721 New Prague
831 Forest Lake
832 Mahtomedi
833 South Washington County
834 Stillwater



Metro ECSU
2 Pine Tree Drive, Suite 101
Arden Hills, MN 55112

www.metroecsus.org
612-638-1500

DATE: October 12, 2017
TO: Class Size Study District Contact Persons
FROM: Julie Schaal, Class Size Study Coordinator
Cathy Macdonald, Metro ECSU Director of Operations
RE: Directions for the Annual Class Size Study 2017-18

Metro ECSU is collecting school district data for the 7-county metro area Class Size Study. This study will give districts a point of comparison for class size across the metro area for the 2017-2018 school year. Metro ECSU would greatly appreciate your help in collecting the data for this study. All districts that submit data will receive a copy of the Metro ECSU Class Size Study when it is released in March.

Class Size Reported as of October 1, 2017:

District data should reflect fall semester class sizes as of October 1, 2017. Please do not update your data to reflect changes made after October 1. It is important that all districts report data from the same time period.

Reporting Format:

With this letter you should have three different Excel spreadsheets for data reporting. Each file is designed for one school level as follows:

- Elementary
- Junior Secondary, Middle School, or First Part of Six-Year Secondary
- Senior Secondary or Second Part of Six-Year Secondary

Each entry in Excel consists of: District Number, Class Type (elementary grades or secondary subjects), Number of Classes and Class Size. These are called fields.

Each file contains a data entry sample and a list of acceptable values for the Class Type field. Note that the Class Type field has a drop-down list of values from which to choose; you do not have to type them.

Example:

Suppose St. Paul Public Schools (district 625) had the following Language Arts/English classes in a middle school: one class of 18, four classes of 22, and twelve classes of 24.

- Use the Junior Secondary Excel Spreadsheet.
- Enter three lines of data, as follows.

District Nbr	Class Type	Nbr Classes	Class Size
625	Language Arts/English	1	18
625	Language Arts/English	4	22
625	Language Arts/English	12	24

Mode of Collection:

If data is compiled at the district level (as is often the case in smaller districts), use one of each of the three Excel files to record the data.

If data is collected from a number of building level contacts, please distribute the appropriate Excel file(s) to each school. Also include a copy of this letter. Instruct building contacts to respond in a timely fashion—we suggest that you give them a due date of November 10, 2017. Data is due to Metro ECSU by November 17, 2017.

Once the data from each building is collected, please aggregate (copy and paste) school data for the district into the three school level Excel files (elementary, jr. secondary and sr. secondary). Please send only the three *district* aggregate data files (along with any comments) to Metro ECSU.

Do not commingle elementary, junior secondary or senior secondary data. Keep each type of data in its respective Excel file.

Detailed Guidance for Reporting Data:

Please review the Detailed Guidance for Reporting Data on page 3 of this letter. We've included specific examples and instructions to help you accurately report your data.

Deadline:

Submit your data to Metro ECSU by November 17, 2017. Please include your contact information in the space provided in the Excel files so that we know who to contact with questions about the data.

If you do not submit your data by November 17, we cannot guarantee that it will be included in the study. All districts that submit data will receive a copy of the Metro ECSU Class Size Study when it is released in February.

Questions:

If you have any questions or are unsure how to report particular data, please contact Julie Schaal, Class Size Study Coordinator, at Julie.Schaal@metroecs.org or 612-638-1540. Thank you for your cooperation and assistance.

Detailed Guidance for Reporting Data

Class Type Options

Provide class size information for the Class Types listed in the drop-down menu only. Metro ECSU does not attempt to include all possible Class Types. Rather, it is a snapshot of classes most frequently offered at each grade level across the metro Twin Cities public schools. Examples of Class Types not collected are: Independent Study, Alternative Learning Programs, ELL, and College Readiness Classes (e.g. AVID).

If your school does not offer a particular Class Type, do not list it or enter any data.

If you are unsure how to classify a specific course, please contact Julie Schaal, Class Size Study Coordinator.

Combo or Ungraded Class Type (elementary only)

Include classes that combine grade levels (combo) or arrange classes by student achievement level (ungraded).

Interdisciplinary Class Type (jr. secondary only)

Include classes that combine 2 or more Class Types at the jr. secondary level. This is for entire courses, not just units of study.

Special Education Class Type

Special education students should be counted with the general education class to which they are assigned. Students in special education classes are counted separately if they are comprised only of special education students who spend the majority of their time in that class.

Multiple Groups per Teacher (jr. and sr. secondary only)

Include classes that combine students with the same teacher in the same classroom with students learning material at different levels. For example, if the same teacher provides instruction for German 5 and German 6 in the same classroom at the same time, this should be considered one World Languages class.

Multiple Teachers per Group

In situations where there are two or more certified teachers assigned to a section or group of students, this should be reported as if there were multiple sections of the class with one teacher each. It would be assumed that teachers share essentially equal student "loads." Examples:

- 2 certified teachers/41 students: Report as 1 class of 20 and 1 class of 21
- 4 certified teachers + 1 half-time teacher/90 students: Report as 4 classes of 20 and 1 class of 10 (allows for the half-time person to have half the # of students)

$$4n + .5n = 90$$

$$n = \# \text{ students for full time teacher}$$

Some rounding may be necessary to maintain # students (n) as whole numbers.

Questions

If you have any questions or are unsure how to report particular data, please contact Julie Schaal, Class Size Study Coordinator, at Julie.Schaal@metroecsu.org or 612-638-1540.

District Nbr	Class Type	Nbr Classes	Class Size

Class Type Values

Art
Business Ed/Marketing
Family & Consumer Science
Health Education
Interdisciplinary Courses
Language Arts/English
Math
Music
Physical Education
Science
Social Studies
Special Education
Technology Ed/Computer Science
World Languages

Jr Secondary Example Table

District Nbr	Class Type	Nbr Classes	Class Size
625	Art	2	18
625	Language Arts/English	2	17
625	Language Arts/English	1	25
625	World Languages	1	29
625	Family & Consumer Science	2	20
625	Family & Consumer Science	1	23
625	Technology Ed/Computer Science	1	24
625	Interdisciplinary Courses	2	28
625	Math	1	29
625	Math	4	25
625	Physical Education	2	30
625	Science	1	27
625	Science	3	28
625	Social Studies	2	21
625	Social Studies	3	24
625	Special Education	1	11
625	Special Education	3	10
625	Business Ed/Marketing	1	21
Etc.			

Please enter your contact information

Contact Person Name	
Position	
School (or District Office)	
Phone	
Email	
Additional information about your data (optional)	

District Nbr	Class Type	Nbr Classes	Class Size

Class Type Values
Art
Business Ed/Marketing
Family & Consumer Science
Health Education
Language Arts/English
Math
Music
Physical Education
Science
Social Studies
Special Education
Technology Ed/Computer Science
Work Experience Program
World Languages

Sr Secondary Example Table			
District Nbr	Class Type	Nbr Classes	Class Size
625	Art	2	18
625	Business Ed/Marketing	2	17
625	Business Ed/Marketing	1	19
625	Language Arts/English	2	20
625	Language Arts/English	2	24
625	Language Arts/English	1	25
625	Family & Consumer Science	2	28
625	Family & Consumer Science	1	24
625	Technology Ed/Computer Science	1	26
625	Technology Ed/Computer Science	3	25
625	Math	2	30
625	Physical Education	4	28
625	Science	2	21
625	Social Studies	1	21
625	Social Studies	3	24
625	Special Education	4	10
625	Work Experience Program	4	25
625	World Languages	2	16
Etc.			

Please enter your contact information	
Contact Person Name	
Position	
School (or District Office)	
Phone	
Email	
Additional information about your data (optional)	