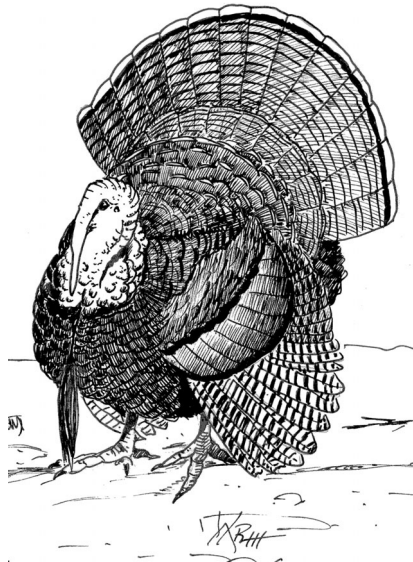


## 2006 SPRING TURKEY HARVEST REPORT



Sharon Goetz and Allison Boies  
Farmland Wildlife Populations and Research Group  
35365 800<sup>th</sup> Ave., Madelia, MN 56062  
507-642-8478, ext. 224; [sharon.goetz@dnr.state.mn.us](mailto:sharon.goetz@dnr.state.mn.us)

## Introduction

In Minnesota, monitoring wild turkey harvest is an important component of population management, which includes setting permit levels for subsequent seasons. Wild turkey populations, permit levels available for the spring season, and harvest have all increased substantially since Minnesota's first modern hunting season in 1978. Spring harvest is affected by wild turkey population size, by harvest pressure, and weather conditions during the spring hunting season.

## Methods

Spring turkey hunting opportunities are now available in approximately half of Minnesota (Figure 1). The 2006 spring turkey season took place from 12 April through 25 May (6 5-day time periods and 2 7-day time periods). An archery permit was offered the last 2 time periods in any permit area with at least 50 permits per time period. Spring turkey hunters are required to register their bird at a designated registration station within 24 hours of harvest. During registration sex, age, and harvest date are recorded.

## Results

A total of 45,704 applications were received for the 32,624 available permits (Table 1). The chance of being drawn for a permit varies by permit area (PA) and time period selected by the hunter (Table 2). There were 27,876 total regular permits and 2,801 archery permits issued. Surplus permits that were sold after the initial lottery drawing accounted for 7% (1,908) of regular permit sales (Figure 2).

A total of 8,241 turkeys were registered in spring 2006 compared to 7,800 in 2005 (Table 1, Figure 3). Overall hunter success was 29.6%, slightly higher than last year (28.2%) and slightly lower than the 5-year average of 31.1%. The highest harvest occurred in PA 349 where 552 turkeys were registered (Table 3). Most PAs (64%) showed increased ( $n = 38$ ) or identical ( $n = 4$ ) harvests from 2005. Hunter success by PA ranged from 9.1% (recently split PA 456) to 60.4% (PA 221; Table 3). Hunters in the first 2 time periods had the highest success rates (39.3% and 39.1%, respectively), with lower success rates in subsequent time periods, following the 5-year trend (Table 4, Figure 4).

Juveniles made up 29% of the harvest (Table 5, Figure 5), which is higher than the past 3 years (10% in 2005, 20% in 2004, and 23% in 2003). Wisconsin reported similar juvenile harvest of 28% for spring 2006 (12% in 2005, 22% in 2004, and 24% in 2003). Harvest age ratios are biased by hunter preference for taking adult gobblers. Also, because age data are hunter reported, some juvenile birds are likely misclassified as adults (i.e., it is assumed that hunters are more likely to report shooting an adult).

Total huntable area (forest cover buffered by 50 meters, with non-huntable areas removed) is used to calculate harvest density (Table 6). The number of turkeys harvested per square mile of huntable habitat ranged from 0.05 (PA 456) to 4.61 (PA 343) with an average of 0.99 statewide (Table 6).

No new turkey hunting accidents were reported during spring 2006. Thirteen spring hunting accidents have been reported since 1978, none of which has been fatal.

## Discussion

Total harvest for spring 2006 (8,241) was slightly up from spring 2005 (7,800). The increase occurred mostly from harvest in time period G, with about twice as many birds harvested in 2006. Time period G was cold and rainy in 2005 that likely led to decreased hunter effort and possibly gobbler activity as well. Weather conditions for spring hunting in 2006 were good, with one rainy spell over the weekend in the 4<sup>th</sup> time period (D), and some cooler weather during portions of time periods F and G.

Table 1. Spring and fall wild turkey applications, permits, and harvest in Minnesota, 1978-2006.

Year	Spring Applications	Spring Permits Available	Spring Permits Issued	% of Available Issued	Spring Harvest	% Spring Hunter Success <sup>a</sup>	Fall Applications	Fall Permits Available	Fall Harvest
1978	10,740	420	411	97.9	94	22.9	-	-	-
1979	11,116	840	827	98.5	116	14.0	-	-	-
1980	9,613	1,200	1,191	99.3	98	8.2	-	-	-
1981	8,398	1,500	1,437	95.8	113	7.9	-	-	-
1982	7,223	2,000	1,992	99.6	106	5.3	-	-	-
1983	8,153	2,100	2,079	99.0	116	5.6	-	-	-
1984	7,123	3,000	2,837	94.6	178	6.3	-	-	-
1985	5,662	2,750	2,449	89.1	323	13.2	-	-	-
1986	5,715	2,500	2,251	90.0	333	14.8	-	-	-
1987	6,361	2,700	2,520	93.3	520	20.6	-	-	-
1988	8,402	3,000	2,994	99.8	674	22.5	-	-	-
1989	13,007	4,000	3,821	95.5	930	24.3	-	-	-
1990	14,326	6,600	6,126	92.8	1,709	27.9	4,522	1,000	326
1991	15,918	9,170	8,607	93.9	1,724	20.0	2,990	2,200	552
1992	16,401	9,310	9,051	97.2	1,691	18.7	2,782	2,200	588
1993	17,800	9,625	9,265	96.3	2,082	22.5	3,186	2,400	605
1994	19,853	9,940	9,479	95.4	1,975	20.8	3,124	2,500	601
1995	21,345	9,975	9,550	95.7	2,339	24.5	3,685	2,500	648
1996	23,757	12,131	10,983	90.5	2,841	25.9	4,453	2,500	685
1997	25,958	12,530	11,610	92.7	3,302	28.4	4,574	2,580	698
1998	29,727	14,035	13,229	94.3	4,361	33.0	4,526	2,710	828
1999	39,957	18,360	16,387	89.3	5,132	31.3	5,354	2,890	865
2000	42,022	20,160	18,661	92.6	6,154	33.0	5,263	3,090	735
2001	41,048	22,936	21,404	93.3	6,383	29.8	4,501	2,870	629
2002	42,415	24,136	22,607	93.7	6,516	28.8	5,180	3,790	594
2003	44,415	25,016	22,770	91.0	7,666	33.7	5,264	3,870	889
2004	48,059	27,600	25,261	91.5	8,434	33.4	5,878	4,380	758
2005	49,181	31,748	27,638	87.1	7,800	28.2	4,542	4,410	681
2006	45,704	32,624	27,876	85.4	8,241	29.6			

<sup>a</sup> Success rate not adjusted for non-participants.

Table 2. Number of regular (non-landowner) applicants, permits available, and chance of being drawn in the regular spring turkey lottery by permit area and time period in Minnesota, 2006.

Permit Area	Time Period	Regular Applicants	Total Permits Available	Landowner Permits Offered <sup>a</sup>	Regular Permits Available	Chance of Regular Applicants being Drawn (%) <sup>b</sup>
157	A	29	5	1	4	14%
	B	34	5	1	4	12%
	C	48	5	1	4	8%
	D	35	5	1	4	11%
	E	16	5	1	4	25%
	F	7	5	0	5	71%
	G	11	5	0	5	45%
	H	3	5	0	5	100%
159	A	35	5	1	4	11%
	B	32	5	1	4	13%
	C	35	5	1	4	11%
	D	26	5	1	4	15%
	E	16	5	0	5	31%
	F	10	5	0	5	50%
	G	18	5	0	5	28%
	H	6	5	0	5	83%
221	A	101	20	2	18	18%
	B	74	20	4	16	22%
	C	92	20	1	19	21%
	D	64	20	3	17	27%
	E	19	20	1	19	100%
	F	15	20	0	20	100%
	G	26	20	1	19	73%
	H	7	20	0	20	100%
222	A	39	5	1	4	10%
	B	21	5	1	4	19%
	C	33	5	1	4	12%
	D	21	5	1	4	19%
	E	10	5	1	4	40%
	F	4	5	0	5	100%
	G	18	5	1	4	22%
	H	2	5	0	5	100%
223	A	334	80	6	74	22%
	B	168	80	7	73	43%
	C	239	80	5	75	31%
	D	176	80	4	76	43%
	E	97	80	4	76	78%
	F	30	80	0	80	100%
	G	62	80	0	80	100%
	H	28	80	0	80	100%
225	A	254	100	20	80	31%
	B	158	100	10	90	57%
	C	256	100	13	87	34%
	D	169	100	6	94	56%
	E	75	100	5	95	100%
	F	33	100	1	99	100%
	G	83	100	1	99	100%
	H	20	100	0	100	100%

<b>Permit Area</b>	<b>Time Period</b>	<b>Regular Applicants</b>	<b>Total Permits Available</b>	<b>Landowner Permits Offered<sup>a</sup></b>	<b>Regular Permits Available</b>	<b>Chance of Regular Applicants being Drawn (%)<sup>b</sup></b>
227	A	216	60	8	52	24%
	B	145	60	7	53	37%
	C	210	60	4	56	27%
	D	149	60	4	56	38%
	E	61	60	2	58	95%
	F	28	60	1	59	100%
	G	44	60	0	60	100%
	H	26	60	0	60	100%
228	A	125	50	2	48	38%
	B	83	50	1	49	59%
	C	90	50	1	49	54%
	D	87	50	0	50	57%
	E	35	50	0	50	100%
	F	18	50	0	50	100%
	G	30	50	2	48	100%
	H	17	50	0	50	100%
235	A	73	15	0	15	21%
	B	48	15	0	15	31%
	C	76	15	0	15	20%
	D	33	15	0	15	45%
	E	23	15	0	15	65%
	F	10	15	0	15	100%
	G	29	15	0	15	52%
	H	10	15	0	15	100%
236	A	285	105	6	99	35%
	B	186	105	4	101	54%
	C	304	105	7	98	32%
	D	260	105	5	100	38%
	E	97	105	2	103	100%
	F	51	105	3	102	100%
	G	93	105	1	104	100%
	H	36	105	1	104	100%
244	A	77	35	4	31	40%
	B	47	35	1	34	72%
	C	67	35	2	33	49%
	D	59	35	2	33	56%
	E	29	35	1	34	100%
	F	10	35	0	35	100%
	G	19	35	0	35	100%
	H	10	35	0	35	100%
248	A	33	5	1	4	12%
	B	27	5	1	4	15%
	C	34	5	0	5	15%
	D	27	5	0	5	19%
	E	7	5	1	4	57%
	F	7	5	1	4	57%
	G	12	5	0	5	42%
	H	3	5	0	5	100%

<b>Permit Area</b>	<b>Time Period</b>	<b>Regular Applicants</b>	<b>Total Permits Available</b>	<b>Landowner Permits Offered<sup>a</sup></b>	<b>Regular Permits Available</b>	<b>Chance of Regular Applicants being Drawn (%)<sup>b</sup></b>
249	A	48	20	1	19	40%
	B	33	20	2	18	55%
	C	38	20	3	17	45%
	D	41	20	1	19	46%
	E	21	20	0	20	95%
	F	7	20	0	20	100%
	G	6	20	0	20	100%
	H	9	20	0	20	100%
337	A	154	55	4	51	33%
	B	119	55	7	48	40%
	C	129	55	3	52	40%
	D	84	55	1	54	64%
	E	38	55	0	55	100%
	F	17	55	0	55	100%
	G	47	55	0	55	100%
	H	8	55	0	55	100%
338	A	207	85	17	68	33%
	B	137	85	12	73	53%
	C	195	85	16	69	35%
	D	131	85	3	82	63%
	E	81	85	1	84	100%
	F	46	85	0	85	100%
	G	67	85	1	84	100%
	H	35	85	0	85	100%
339	A	165	80	9	71	43%
	B	94	80	1	79	84%
	C	142	80	8	72	51%
	D	100	80	3	77	77%
	E	85	80	0	80	94%
	F	24	80	1	79	100%
	G	65	80	0	80	100%
	H	25	80	0	80	100%
341	A	536	225	26	199	37%
	B	347	225	14	211	61%
	C	562	225	25	200	36%
	D	494	225	21	204	41%
	E	197	225	5	220	100%
	F	127	225	1	224	100%
	G	236	225	3	222	94%
	H	80	225	2	223	100%
342	A	350	225	32	193	55%
	B	242	225	10	215	89%
	C	432	225	22	203	47%
	D	355	225	8	217	61%
	E	200	225	0	225	100%
	F	71	225	1	224	100%
	G	138	225	4	221	100%
	H	36	225	1	224	100%

<b>Permit Area</b>	<b>Time Period</b>	<b>Regular Applicants</b>	<b>Total Permits Available</b>	<b>Landowner Permits Offered<sup>a</sup></b>	<b>Regular Permits Available</b>	<b>Chance of Regular Applicants being Drawn (%)<sup>b</sup></b>
343	A	408	160	32	128	31%
	B	328	160	22	138	42%
	C	559	160	32	128	23%
	D	338	160	8	152	45%
	E	188	160	3	157	84%
	F	96	160	6	154	100%
	G	195	160	1	159	100%
	H	94	160	5	155	100%
344	A	397	140	15	125	31%
	B	299	140	10	130	43%
	C	387	140	9	131	34%
	D	257	140	6	134	52%
	E	173	140	0	140	81%
	F	73	140	1	139	100%
	G	132	140	4	136	100%
	H	36	140	0	140	100%
345	A	217	200	35	165	76%
	B	213	200	11	189	89%
	C	252	200	4	196	78%
	D	204	200	7	193	95%
	E	97	200	1	199	100%
	F	34	200	0	200	100%
	G	82	200	1	199	100%
	H	17	200	1	199	100%
346	A	510	325	48	277	54%
	B	315	325	9	316	100%
	C	441	325	18	307	70%
	D	388	325	8	317	82%
	E	173	325	2	323	100%
	F	89	325	1	324	100%
	G	151	325	0	325	100%
	H	14	325	0	325	100%
347	A	306	150	24	126	41%
	B	204	150	10	140	69%
	C	320	150	27	123	38%
	D	245	150	7	143	58%
	E	129	150	0	150	100%
	F	59	150	1	149	100%
	G	92	150	1	149	100%
	H	34	150	1	149	100%
348	A	422	175	23	152	36%
	B	294	175	12	163	55%
	C	434	175	12	163	38%
	D	333	175	9	166	50%
	E	161	175	1	174	100%
	F	95	175	0	175	100%
	G	158	175	2	173	100%
	H	47	175	0	175	100%

<b>Permit Area</b>	<b>Time Period</b>	<b>Regular Applicants</b>	<b>Total Permits Available</b>	<b>Landowner Permits Offered<sup>a</sup></b>	<b>Regular Permits Available</b>	<b>Chance of Regular Applicants being Drawn (%)<sup>b</sup></b>
349	A	862	450	71	379	44%
	B	570	450	21	429	75%
	C	855	450	32	418	49%
	D	665	450	17	433	65%
	E	346	450	3	447	100%
	F	189	450	0	450	100%
	G	283	450	2	448	100%
	H	130	450	1	449	100%
410	A	183	75	15	60	33%
	B	142	75	4	71	50%
	C	269	75	11	64	24%
	D	212	75	8	67	32%
	E	90	75	4	71	79%
	F	38	75	1	74	100%
	G	80	75	5	70	88%
	H	38	75	4	71	100%
411	A	144	60	8	52	36%
	B	70	60	8	52	74%
	C	189	60	7	53	28%
	D	156	60	12	48	31%
	E	42	60	2	58	100%
	F	26	60	1	59	100%
	G	51	60	0	60	100%
	H	25	60	0	60	100%
412	A	152	45	9	36	24%
	B	105	45	9	36	34%
	C	201	45	9	36	18%
	D	204	45	8	37	18%
	E	52	45	5	40	77%
	F	37	45	4	41	100%
	G	92	45	2	43	47%
	H	33	45	0	45	100%
413	A	40	10	2	8	20%
	B	39	10	2	8	21%
	C	71	10	2	8	11%
	D	44	10	2	8	18%
	E	26	10	0	10	38%
	F	16	10	0	10	63%
	G	22	10	2	8	36%
	H	5	10	0	10	100%
414	A	57	20	3	17	30%
	B	51	20	2	18	35%
	C	44	20	4	16	36%
	D	44	20	4	16	36%
	E	20	20	2	18	90%
	F	3	20	0	20	100%
	G	18	20	0	20	100%
	H	3	20	4	16	100%



Permit Area	Time Period	Regular Applicants	Total Permits Available	Landowner Permits Offered <sup>a</sup>	Regular Permits Available	Chance of Regular Applicants being Drawn (%) <sup>b</sup>
415	A	194	70	6	64	33%
	B	123	70	4	66	54%
	C	248	70	7	63	25%
	D	184	70	9	61	33%
	E	85	70	6	64	75%
	F	59	70	3	67	100%
	G	63	70	4	66	100%
	H	38	70	0	70	100%
416	A	45	10	2	8	18%
	B	34	10	1	9	26%
	C	47	10	0	10	21%
	D	43	10	0	10	23%
	E	21	10	0	10	48%
	F	13	10	0	10	77%
	G	28	10	0	10	36%
	H	13	10	1	9	69%
417	A	139	40	7	33	24%
	B	90	40	4	36	40%
	C	121	40	3	37	31%
	D	92	40	3	37	40%
	E	41	40	3	37	90%
	F	25	40	0	40	100%
	G	53	40	1	39	74%
	H	18	40	0	40	100%
418	A	217	65	13	52	24%
	B	145	65	13	52	36%
	C	281	65	12	53	19%
	D	187	65	9	56	30%
	E	74	65	0	65	88%
	F	51	65	1	64	100%
	G	84	65	6	59	70%
	H	28	65	1	64	100%
419	A	109	40	5	35	32%
	B	67	40	3	37	55%
	C	100	40	3	37	37%
	D	63	40	2	38	60%
	E	34	40	0	40	100%
	F	19	40	0	40	100%
	G	17	40	1	39	100%
	H	9	40	0	40	100%
420	A	17	7	0	7	41%
	B	7	7	0	7	100%
	C	7	7	0	7	100%
	D	5	7	1	6	100%
	E	6	7	0	7	100%
	F	1	7	0	7	100%
	G	2	7	0	7	100%
	H	1	7	0	7	100%

Permit Area	Time Period	Regular Applicants	Total Permits Available	Landowner Permits Offered <sup>a</sup>	Regular Permits Available	Chance of Regular Applicants being Drawn (%) <sup>b</sup>
422	A	17	5	0	5	29%
	B	12	5	0	5	42%
	C	13	5	0	5	38%
	D	14	5	1	4	29%
	E	7	5	0	5	71%
	F	7	5	0	5	71%
	G	10	5	0	5	50%
	H	3	5	0	5	100%
424	A	8	5	0	5	63%
	B	5	5	0	5	100%
	C	4	5	0	5	100%
	D	7	5	0	5	71%
	E	6	5	0	5	83%
	F	0	5	0	5	100%
	G	6	5	0	5	83%
	H	0	5	0	5	100%
425	A	212	60	12	48	23%
	B	132	60	8	52	39%
	C	194	60	7	53	27%
	D	184	60	3	57	31%
	E	46	60	1	59	100%
	F	27	60	0	60	100%
	G	72	60	2	58	81%
	H	38	60	3	57	100%
426	A	10	5	1	4	40%
	B	3	5	0	5	100%
	C	5	5	0	5	100%
	D	10	5	0	5	50%
	E	2	5	0	5	100%
	F	1	5	0	5	100%
	G	1	5	0	5	100%
	H	0	5	0	5	100%
427	A	21	10	1	9	43%
	B	11	10	2	8	73%
	C	12	10	1	9	75%
	D	20	10	2	8	40%
	E	4	10	1	9	100%
	F	1	10	0	10	100%
	G	7	10	0	10	100%
	H	1	10	0	10	100%
428	A	58	15	3	12	21%
	B	43	15	2	13	30%
	C	39	15	1	14	36%
	D	40	15	1	14	35%
	E	29	15	0	15	52%
	F	12	15	0	15	100%
	G	20	15	0	15	75%
	H	7	15	0	15	100%

<b>Permit Area</b>	<b>Time Period</b>	<b>Regular Applicants</b>	<b>Total Permits Available</b>	<b>Landowner Permits Offered<sup>a</sup></b>	<b>Regular Permits Available</b>	<b>Chance of Regular Applicants being Drawn (%)<sup>b</sup></b>
429	A	46	30	2	28	61%
	B	26	30	0	30	100%
	C	47	30	3	27	57%
	D	50	30	1	29	58%
	E	15	30	0	30	100%
	F	3	30	0	30	100%
	G	4	30	0	30	100%
	H	4	30	0	30	100%
431	A	13	5	1	4	31%
	B	13	5	1	4	31%
	C	17	5	1	4	24%
	D	31	5	0	5	16%
	E	10	5	0	5	50%
	F	4	5	0	5	100%
	G	1	5	0	5	100%
	H	1	5	0	5	100%
433	A	44	5	1	4	9%
	B	19	5	1	4	21%
	C	19	5	1	4	21%
	D	26	5	1	4	15%
	E	17	5	1	4	24%
	F	6	5	0	5	83%
	G	7	5	1	4	57%
	H	7	5	0	5	71%
440	A	140	75	15	60	43%
	B	101	75	11	64	63%
	C	145	75	9	66	46%
	D	104	75	3	72	69%
	E	48	75	0	75	100%
	F	16	75	0	75	100%
	G	41	75	0	75	100%
	H	11	75	0	75	100%
442	A	430	160	32	128	30%
	B	301	160	16	144	48%
	C	513	160	27	133	26%
	D	320	160	11	149	47%
	E	169	160	11	149	88%
	F	66	160	1	159	100%
	G	141	160	2	158	100%
	H	60	160	2	158	100%
443	A	109	70	10	60	55%
	B	96	70	6	64	67%
	C	143	70	4	66	46%
	D	110	70	0	70	64%
	E	67	70	1	69	100%
	F	32	70	0	70	100%
	G	35	70	0	70	100%
	H	10	70	0	70	100%

Permit Area	Time Period	Regular Applicants	Total Permits Available	Landowner Permits Offered <sup>a</sup>	Regular Permits Available	Chance of Regular Applicants being Drawn (%) <sup>b</sup>
446	A	17	5	1	4	24%
	B	3	5	1	4	100%
	C	17	5	1	4	24%
	D	13	5	1	4	31%
	E	5	5	1	4	80%
	F	4	5	0	5	100%
	G	7	5	0	5	71%
	H	3	5	1	4	100%
447	A	13	5	1	4	31%
	B	8	5	0	5	63%
	C	7	5	0	5	71%
	D	8	5	0	5	63%
	E	9	5	1	4	44%
	F	1	5	0	5	100%
	G	3	5	0	5	100%
	H	3	5	1	4	100%
448	A	12	7	1	6	50%
	B	11	7	1	6	55%
	C	29	7	1	6	21%
	D	14	7	1	6	43%
	E	15	7	0	7	47%
	F	4	7	1	6	100%
	G	6	7	0	7	100%
	H	7	7	1	6	86%
449	A	36	7	1	6	17%
	B	26	7	1	6	23%
	C	29	7	1	6	21%
	D	27	7	0	7	26%
	E	5	7	0	7	100%
	F	6	7	0	7	100%
	G	15	7	1	6	40%
	H	16	7	0	7	44%
450	A	21	7	1	6	29%
	B	8	7	0	7	88%
	C	15	7	0	7	47%
	D	6	7	1	6	100%
	E	6	7	0	7	100%
	F	4	7	0	7	100%
	G	4	7	0	7	100%
	H	1	7	0	7	100%
451	A	16	5	0	5	31%
	B	14	5	0	5	36%
	C	30	5	0	5	17%
	D	19	5	1	4	21%
	E	4	5	1	4	100%
	F	7	5	0	5	71%
	G	15	5	0	5	33%
	H	4	5	0	5	100%

<b>Permit Area</b>	<b>Time Period</b>	<b>Regular Applicants</b>	<b>Total Permits Available</b>	<b>Landowner Permits Offered<sup>a</sup></b>	<b>Regular Permits Available</b>	<b>Chance of Regular Applicants being Drawn (%)<sup>b</sup></b>
454	A	23	5	0	5	22%
	B	10	5	1	4	40%
	C	15	5	1	4	27%
	D	12	5	1	4	33%
	E	8	5	1	4	50%
	F	2	5	0	5	100%
	G	12	5	0	5	42%
	H	6	5	1	4	67%
456	A	2	5	0	5	100%
	B	3	5	1	4	100%
	C	11	5	1	4	36%
	D	2	5	0	5	100%
	E	3	5	0	5	100%
	F	3	5	0	5	100%
	G	0	5	0	5	100%
	H	0	5	0	5	100%
457	A	15	5	0	5	33%
	B	11	5	1	4	36%
	C	25	5	0	5	20%
	D	11	5	0	5	45%
	E	3	5	0	5	100%
	F	2	5	0	5	100%
	G	0	5	0	5	100%
	H	0	5	0	5	100%
458	A	4	5	0	5	100%
	B	2	5	0	5	100%
	C	6	5	0	5	83%
	D	1	5	0	5	100%
	E	2	5	0	5	100%
	F	2	5	0	5	100%
	G	2	5	0	5	100%
	H	0	5	0	5	100%
459	A	53	25	1	24	45%
	B	33	25	5	20	61%
	C	43	25	1	24	56%
	D	45	25	1	24	53%
	E	29	25	0	25	86%
	F	13	25	1	24	100%
	G	12	25	0	25	100%
	H	4	25	0	25	100%
461	A	244	80	16	64	26%
	B	128	80	4	76	59%
	C	250	80	11	69	28%
	D	179	80	6	74	41%
	E	85	80	4	76	89%
	F	32	80	0	80	100%
	G	62	80	0	80	100%
	H	14	80	1	79	100%

Permit Area	Time Period	Regular Applicants	Total Permits Available	Landowner Permits Offered <sup>a</sup>	Regular Permits Available	Chance of Regular Applicants being Drawn (%) <sup>b</sup>
462	A	208	90	21	69	33%
	B	148	90	13	77	52%
	C	203	90	4	86	42%
	D	179	90	5	85	47%
	E	84	90	0	90	100%
	F	46	90	0	90	100%
	G	76	90	5	85	100%
	H	28	90	0	90	100%
463	A	56	20	4	16	29%
	B	31	20	1	19	61%
	C	62	20	3	17	27%
	D	40	20	3	17	43%
	E	16	20	0	20	100%
	F	3	20	0	20	100%
	G	12	20	2	18	100%
	H	4	20	0	20	100%
464	A	52	25	5	20	38%
	B	28	25	0	25	89%
	C	61	25	1	24	39%
	D	31	25	1	24	77%
	E	24	25	0	25	100%
	F	6	25	0	25	100%
	G	11	25	0	25	100%
	H	7	25	0	25	100%
465	A	41	30	0	30	73%
	B	35	30	0	30	86%
	C	49	30	0	30	61%
	D	46	30	0	30	65%
	E	5	30	0	30	100%
	F	0	30	0	30	100%
	G	1	30	0	30	100%
	H	4	30	0	30	100%
466	A	124	50	5	45	36%
	B	62	50	6	44	71%
	C	116	50	2	48	41%
	D	71	50	1	49	69%
	E	39	50	6	44	100%
	F	29	50	3	47	100%
	G	38	50	0	50	100%
	H	11	50	0	50	100%
467	A	95	40	8	32	34%
	B	63	40	4	36	57%
	C	150	40	8	32	21%
	D	72	40	3	37	51%
	E	33	40	2	38	100%
	F	10	40	0	40	100%
	G	38	40	2	38	100%
	H	24	40	1	39	100%

Table 3. Spring wild turkey harvest and hunter success rates by permit area in Minnesota, 2006.

Permit Area	Permits Available	Permits Issued <sup>a</sup>	Registered Harvest	% Hunter Success (2006) <sup>b</sup>	% Hunter Success (2-5 Yr Ave) <sup>c</sup>
157	40	34	16	47.1	36.6 (3)
159	40	34	17	50.0	33.0 (3)
221	160	144	87	60.4	51.8 (4)
222	40	32	17	53.1	48.6 (2)
223	640	567	190	33.5	35.7 (5)
225	800	673	197	29.3	25.4 (5)
227	480	413	184	44.6	35.7 (5)
228	400	326	139	42.6	41.0 (5)
235	120	110	40	36.4	36.6 (5)
236	840	755	292	38.7	38.8 (5)
244	280	220	67	30.5	30.7 (5)
248	40	62	33	53.2	48.0 (3)
249	160	134	38	28.4	27.9 (4)
337	440	389	115	29.6	33.2 (5)
338	680	580	184	31.7	31.5 (5)
339	640	551	196	35.6	34.1 (5)
341	1,800	1598	472	29.5	33.8 (5)
342	1,800	1555	342	22.0	25.5 (5)
343	1,280	1177	443	37.6	40.2 (5)
344	1,120	967	191	19.8	24.7 (5)
345	1,600	1169	204	17.5	20.5 (5)
346	2,600	1964	423	21.5	24.3 (5)
347	1,200	1098	280	25.5	26.0 (5)
348	1,400	1196	276	23.1	24.9 (5)
349	3,600	3026	552	18.2	23.7 (5)
410	600	511	221	43.2	44.1 (5)
411	480	405	145	35.8	38.9 (5)
412	360	318	149	46.9	43.4 (5)
413	80	74	34	45.9	40.4 (2)
414	160	143	49	34.3	37.2 (3)
415	560	499	222	44.5	39.2 (5)
416	80	79	22	27.8	37.1 (5)
417	320	286	115	40.2	39.7 (5)
418	520	474	204	43.0	41.3 (5)
419	320	274	99	36.1	28.0 (5)
420	56	45	17	37.8	43.8 (3)
422	40	34	19	55.9	43.1 (5)
424	40	27	13	48.1	48.9 (2)
425	480	436	164	37.6	39.1 (5)
426	40	26	4	15.4	19.6 (5)
427	80	69	17	24.6	34.7 (5)
428	120	109	43	39.4	37.4 (5)

Permit Area	Permits Available	Permits Issued <sup>a</sup>	Registered Harvest	% Hunter Success (2006) <sup>b</sup>	% Hunter Success (2-5 Yr Ave) <sup>c</sup>
429	240	214	61	28.5	23.0 (5)
431	40	36	19	52.8	43.8 (5)
433	40	41	23	56.1	48.8 (3)
440	600	517	134	25.9	31.3 (5)
442	1,280	1079	328	30.4	34.5 (5)
443	560	502	128	25.5	30.4 (5)
446	40	39	18	46.2	43.4 (2)
447	40	32	5	15.6	30.3 (2)
448	56	53	27	50.9	55.3 (3)
449	56	54	18	33.3	50.0 (3)
450	56	50	15	30.0	29.6 (5)
451	40	37	18	48.6	56.8 (4)
454	40	37	14	37.8	32.4 (2)
456	40	33	3	9.1	5.9 (2)
457	40	24	13	54.2	30.3 (5)
458	40	15	7	46.7	36.6 (2)
459	200	179	41	22.9	25.6 (5)
461	640	552	210	38.0	34.1 (5)
462	720	637	231	36.3	36.4 (5)
463	160	141	52	36.9	32.2 (5)
464	200	171	47	27.5	25.8 (5)
465	240	216	66	30.6	26.1 (5)
466	400	356	116	32.6	36.6 (5)
467	320	278	95	34.2	34.8 (5)
Unknown			20		
<b>Total</b>	<b>32,624</b>	<b>27,876</b>	<b>8,241</b>	<b>29.6</b>	<b>31.1 (5)</b>

<sup>a</sup> 2,801 permits were issued to archery hunters and not included in these figures.

<sup>b</sup> Success rate not adjusted for non-participants.

<sup>c</sup> Number in parenthesis equals the number of years data was available.



Table 4. Spring wild turkey hunter success by time period in Minnesota, 2006.

<b>Time Period</b>	<b>Permits Issued</b>	<b>Registered Harvest</b>	<b>% Hunter Success (2006)<sup>a</sup></b>	<b>% Hunter Success (5 Yr Ave)<sup>a</sup></b>
A) April 14-18	3,762	1,478	39.3	42.3
B) April 19-23	3,609	1,411	39.1	39.9
C) April 24-28	3,744	1,107	29.6	30.7
D) April 29-3	3,543	839	23.7	26.6
E) May 4-8	3,607	1,113	30.9	32.0
F) May 9-13	3,190	822	25.8	29.1
G) May 14-20	3,406	834	24.5	22.3
H) May 21-27	3,015	637	21.1	24.8
<b>Total</b>	<b>27,876</b>	<b>8,241</b>	<b>29.6</b>	<b>31.1</b>

<sup>a</sup> Success rate not adjusted for non-participants.

Table 5. Age structure of spring wild turkey harvest by permit area in Minnesota, 2006.

**Note: Age is hunter reported and is subject to error.**

Permit Area	Adults	Juveniles	Unknown	% Juveniles	Total Harvest
157	14	2	0	12.5	16
159	13	4	0	23.5	17
221	65	22	0	25.3	87
222	13	4	0	23.5	17
223	141	49	0	25.8	190
225	133	64	0	32.5	197
227	144	38	2	20.7	184
228	108	29	2	20.9	139
235	31	9	0	22.5	40
236	225	67	0	22.9	292
244	37	30	0	44.8	67
248	27	6	0	18.2	33
249	24	14	0	36.8	38
337	80	35	0	30.4	115
338	119	65	0	35.3	184
339	130	65	1	33.2	196
341	342	130	0	27.5	472
342	234	107	1	31.3	342
343	340	100	3	22.6	443
344	123	66	2	34.6	191
345	120	84	0	41.2	204
346	245	175	3	41.4	423
347	187	92	1	32.9	280
348	194	80	2	29.0	276
349	360	187	5	33.9	552
410	173	48	0	21.7	221
411	101	42	2	29.0	145
412	109	40	0	26.8	149
413	26	8	0	23.5	34
414	37	12	0	24.5	49
415	171	49	2	22.1	222
416	13	9	0	40.9	22
417	72	41	2	35.7	115
418	156	48	0	23.5	204
419	64	35	0	35.4	99
420	14	3	0	17.6	17
422	14	5	0	26.3	19
424	12	1	0	7.7	13
425/435	124	39	1	23.8	164
426	3	1	0	25.0	4
427	10	7	0	41.2	17
428	31	12	0	27.9	43
429	42	19	0	31.1	61
431	14	5	0	26.3	19
433	20	3	0	13.0	23

<b>Permit Area</b>	<b>Adults</b>	<b>Juveniles</b>	<b>Unknown</b>	<b>% Juveniles</b>	<b>Total Harvest</b>
440	91	42	1	31.3	134
442	228	99	1	30.2	328
443	82	46	0	35.9	128
446	16	2	0	11.1	18
447	4	1	0	20.0	5
448	24	3	0	11.1	27
449	17	1	0	5.6	18
450	12	3	0	20.0	15
451/452/453	15	3	0	16.7	18
454/455	13	1	0	7.1	14
456	3	0	0	0.0	3
457	11	2	0	15.4	13
458	7	0	0	0.0	7
459	32	9	0	22.0	41
461	148	60	2	28.6	210
462	150	80	1	34.6	231
463	35	17	0	32.7	52
464	29	18	0	38.3	47
465	36	30	0	45.5	66
466	100	16	0	13.8	116
467	66	29	0	30.5	95
Unknown			20		
<b>Total</b>	<b>5,774</b>	<b>2,413</b>	<b>54</b>	<b>29.3</b>	<b>8,241</b>

Table 6. Spring wild turkey harvest per square mile of huntable habitat<sup>a</sup> in Minnesota, 2006.

Permit Area	Total Huntable Habitat <sup>a</sup> (Square Miles)	Turkeys Harvested Per Square Mile
157	269	0.06
159	294	0.06
221	93	0.94
222	NA	NA
223	90	2.11
225	233	0.85
227	111	1.66
228	43	3.23
235	15	2.67
236	169	1.73
244	353	0.19
248	115	0.29
249	207	0.18
337	60	1.92
338	99	1.86
339	92	2.13
341	232	2.03
342	159	2.15
343	96	4.61
344	93	2.05
345	137	1.49
346	216	1.96
347	140	2.00
348	159	1.74
349	277	1.99
410	392	0.56
411	184	0.79
412	275	0.54
413	NA	NA
414	252	0.19
415	264	0.84
416	88	0.25
417	192	0.60
418	222	0.92
419	163	0.61
420	61	0.28
422	44	0.43
424	NA	NA
425/435	128	1.28
426	46	0.09
427	64	0.27
428	110	0.39
429	108	0.56
431	42	0.45

<b>Permit Area</b>	<b>Total Huntable Habitat<sup>a</sup> (Square Miles)</b>	<b>Turkeys Harvested Per Square Mile</b>
433	51	0.45
440	97	1.38
442	164	2.00
443	80	1.60
446	91	0.20
447	54	0.09
448	44	0.61
449	59	0.31
450	56	0.27
451/452/453	97	0.19
454/455/456/458	178	0.08
456	58	0.05
457	68	0.19
458	65	0.11
459	104	0.39
461	131	1.60
462	118	1.96
463	70	0.74
464	60	0.78
465	48	1.38
466	115	1.01
467	80	1.19
Unknown	20	NA
<b>Total</b>	<b>8,295</b>	<b>0.99</b>

<sup>a</sup> Huntable habitat is forest cover buffered by 50 meters, with non-huntable areas (e.g., lakes, cities) removed.

Figure 1. Turkey permit areas open to spring hunting in Minnesota, 2006.

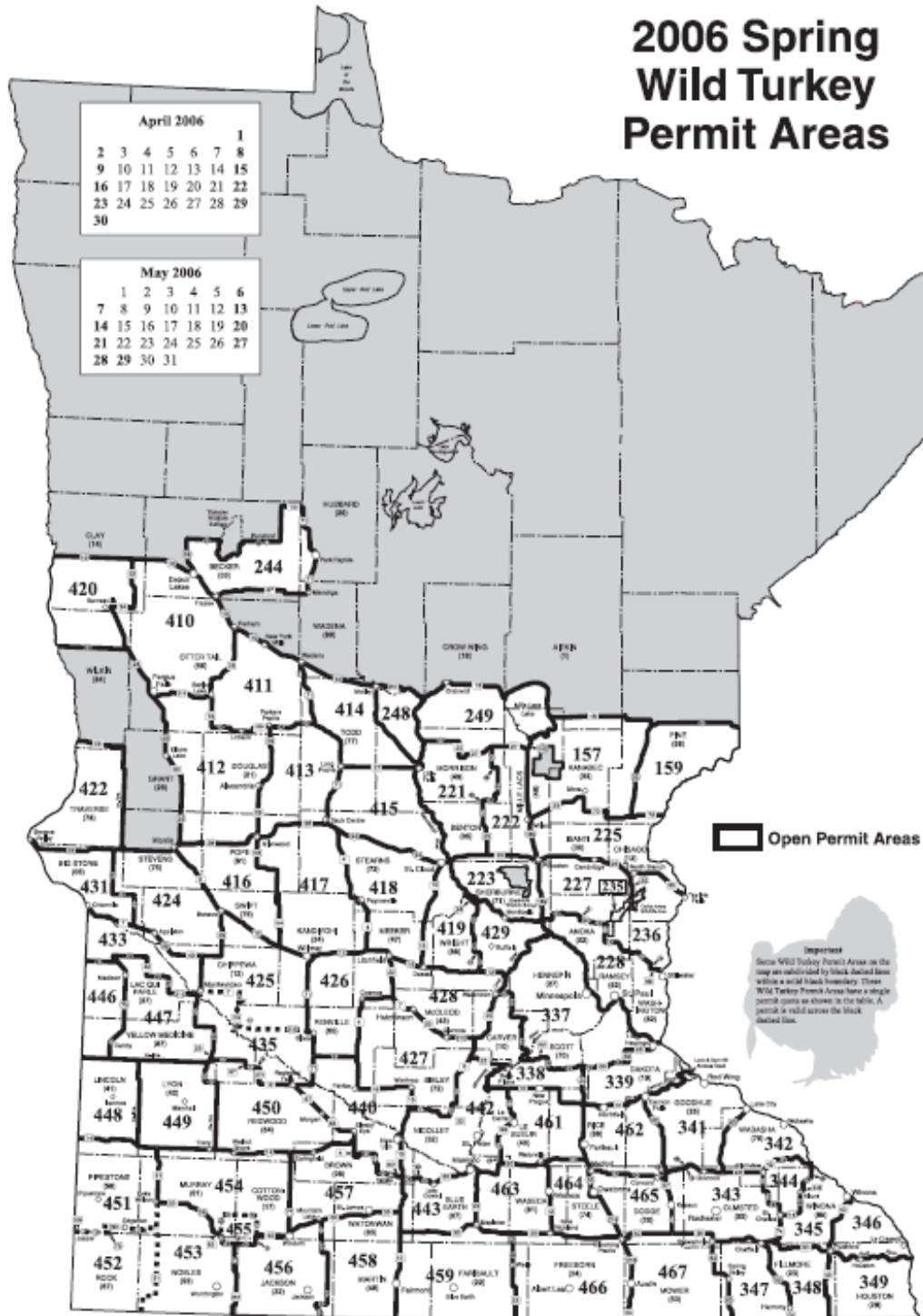


Figure 2. Lottery permits issued for the spring wild turkey hunting season by category in Minnesota, 2006.

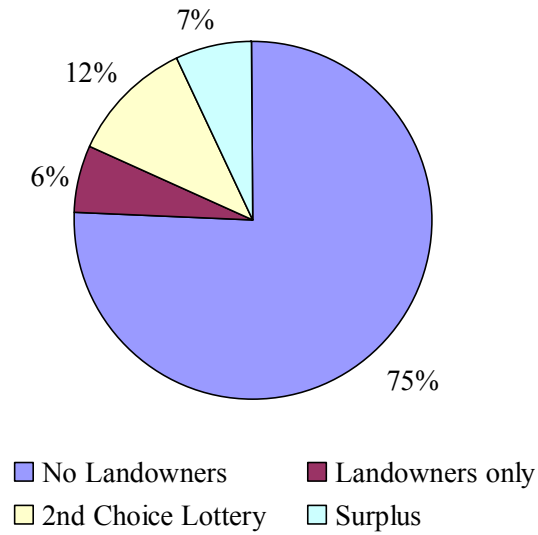


Figure 3. Total harvest and hunter success rate for the spring wild turkey hunting season in Minnesota from 1978 to 2006.

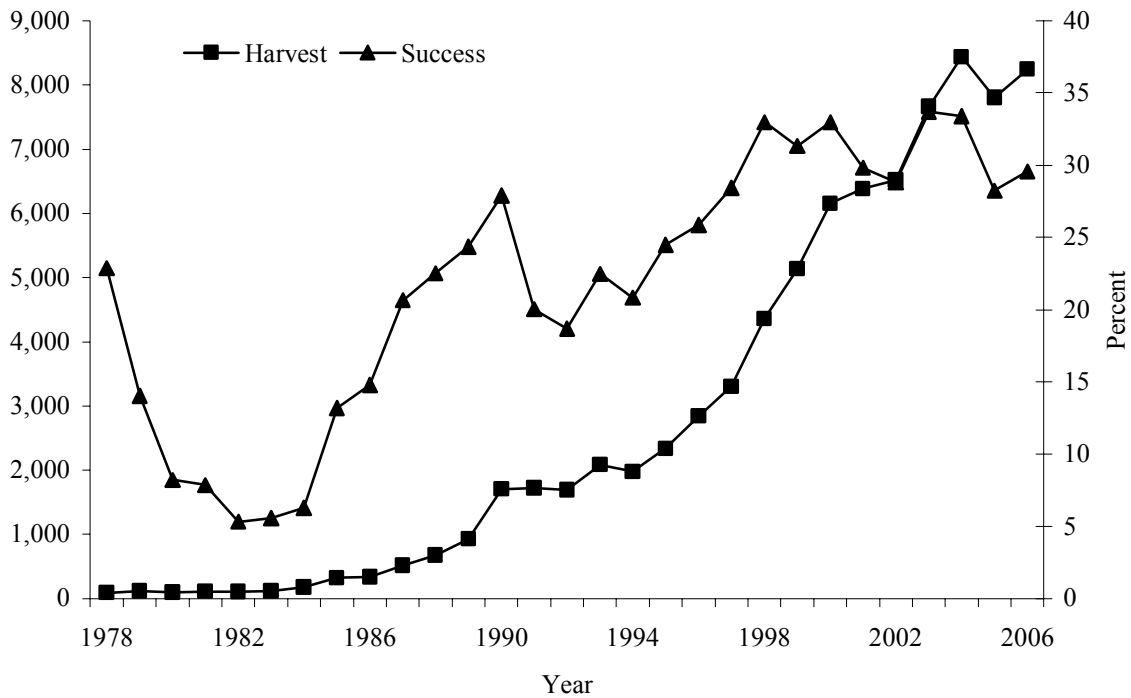


Figure 4. Permits issued, registered harvest, and hunter success by time period for the spring wild turkey hunting season in Minnesota, 2006.

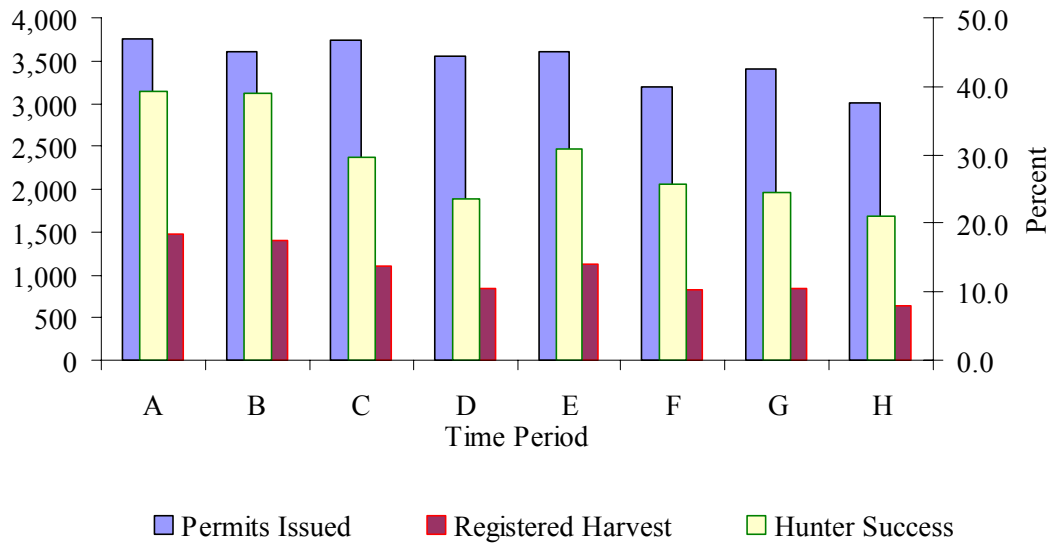


Figure 5. Hunter reported age structure of spring wild turkey harvest in Minnesota, 2006.  
**Note: Age is hunter reported and is subject to error.**

