

2010 Project Abstract

For the Period Ending June 30, 2012

TITLE: Metro Conservation Corridors – Phase V Supplemental Overall Summary
PROJECT MANAGER: Sarah Strommen
ORGANIZATION: Minnesota Land Trust
ADDRESS: 2356 University Avenue West, Suite 240
St. Paul, MN 55114
WEB SITE ADDRESS: www.dnr.state.mn.us/metroconservationcorridors
FUND: Environment and Natural Resources Trust Fund
LEGAL CITATION: Minnesota Laws 2010, Chapter 362, Section 2, Subdivision 4(g)

APPROPRIATION AMOUNT: \$1,750,000

OVERALL PROJECT OUTCOME AND RESULTS

During this supplemental grant to the fifth phase of the Metro Corridors project, the Metro Conservation Corridors Partners continued their work to accelerate protection and restoration of remaining high-quality natural lands in the greater Twin Cities Metropolitan Area by strategically coordinating and focusing conservation efforts within a connected and scientifically-identified network of critical lands. This corridor network stretches from the area's urban core to its rural perimeter, including portions of 16 counties.

This supplemental phase was focused on unique opportunities that were not funded through prior phases of the MeCC program. This supplemental phase included only four of the MeCC partners and accomplished work in two specific result areas.

1. Restore and Enhance Significant Habitat: Partners restored and enhanced a total of 133 acres of significant habitat in the Lower Minnesota River Watershed using Phase V Supplemental funding plus an additional 33 acres with other funds.

2. Acquire Significant Habitat: Partners protected 494 acres of land through acquisition of fee title and conservation easements and leveraged an additional 454 acres of land using other funds.

Since 2003, MeCC partners have protected more than 10,000 acres and restored nearly 8,000 acres. These strategic and coordinated efforts address a number of recommendations of the Statewide Conservation and Preservation Plan, including, protecting priority land habitats, protecting critical shorelands of streams and lakes, restoring land, wetlands, and wetland-associated watersheds, and improving connectivity and access to outdoor recreation.

PROJECT RESULTS USE AND DISSEMINATION

As projects were completed, the individual partners were encouraged to publicize accomplishments through press releases, organization newsletters and websites. These efforts resulted in information being distributed to the public through websites, email lists, daily and weekly newspapers, newsletters, and other print materials. Additionally, the MeCC Partnership maintains an interactive public web map that shows the locations of MeCC projects over time. This web map can be accessed at: <http://www.dnr.state.mn.us/maps/MeCC/mapper.html>.

Environment and Natural Resources Trust 2010 Work Program Final Report

Date of Report: September 2012

ENRTF 2010 Final Report

Date of Work program Approval: June 9, 2010

Project Completion Date: June 30, 2012

I. PROJECT TITLE: Metro Conservation Corridors Phase IV Supplemental Overall Summary

Project Manager: Sarah Strommen
Affiliation: Minnesota Land Trust
Mailing Address: 2356 University Avenue West, Suite 240
City / State / Zip: St. Paul, MN 55114
Telephone Number: 651-647-9590
E-mail Address: sstrommen@mnland.org
FAX Number: 651-647-9769
Web Page address: www.mnland.org

Location: Within mapped corridors (see attached map) in the counties of Anoka, Carver, Chisago, Dakota, Goodhue, Hennepin, Isanti, LeSueur, Nicollet, Ramsey, Rice, Scott, Sherburne, Sibley, Washington and Wright.

Total Trust Fund Project Budget:	Trust Fund Appropriation:	\$ 1,750,000
	Minus Amount Spent:	<u>\$ 1,647,711</u>
	Equal Balance:	\$ 102,289

Legal Citation: M.L. 2010, Chapter 362, Section 2, Subdivision 4(g)

Appropriation Language:

\$1,750,000 is added to Laws 2009, chapter 143, section 2, subdivision 4, paragraph (f), from the trust fund to the commissioner of natural resources for acceleration of agency programs and cooperative agreements. Of this appropriation, \$1,750,000 is for agreements as follows: \$890,000 with the Trust for Public Land; \$485,000 with Minnesota Land Trust; \$325,000 with Minnesota Valley National Wildlife Refuge Trust, Inc.; and \$50,000 with Friends of the Minnesota Valley for planning, restoring, and protecting important natural areas in the metropolitan area, as defined under Minnesota Statutes, section 473.121, subdivision 2, and portions of the surrounding counties, through grants, contracted services, technical assistance, conservation easements, and fee title acquisition. Land acquired with this appropriation must be sufficiently improved to meet at least minimum management standards as determined by the commissioner of natural resources. Expenditures are limited to the identified project corridor areas as defined in the work program. This appropriation may not be used for the purchase of residential structures, unless

expressly approved in the work program. All conservation easements must be perpetual and have a natural resource management plan. Any land acquired in fee title by the commissioner of natural resources with money from this appropriation must be designated as an outdoor recreation unit under Minnesota Statutes, section 86A.07. The commissioner may similarly designate any lands acquired in less than fee title. A list of proposed restorations and fee title and easement acquisitions must be provided as part of the required work program. All funding for conservation easements must include a long-term stewardship plan and funding for monitoring and enforcing the agreement.

II. and III. FINAL PROJECT SUMMARY:

During this supplemental grant to the fifth phase of the Metro Corridors project, the Metro Conservation Corridors Partners continued their work to accelerate protection and restoration of remaining high-quality natural lands in the greater Twin Cities Metropolitan Area by strategically coordinating and focusing conservation efforts within a connected and scientifically-identified network of critical lands. This corridor network stretches from the area's urban core to its rural perimeter, including portions of 16 counties.

This supplemental phase was focused on unique opportunities that were not funded through prior phases of the MeCC program. This supplemental phase included only four of the MeCC partners and accomplished work in two specific result areas.

1. Restore and Enhance Significant Habitat: Partners restored and enhanced a total of 133 acres of significant habitat in the Lower Minnesota River Watershed using Phase V Supplemental funding plus an additional 33 acres with other funds.

2. Acquire Significant Habitat: Partners protected 494 acres of land through acquisition of fee title and conservation easements and leveraged an additional 454 acres of land using other funds.

Since 2003, MeCC partners have protected more than 10,000 acres and restored nearly 8,000 acres. These strategic and coordinated efforts address a number of recommendations of the Statewide Conservation and Preservation Plan, including, protecting priority land habitats, protecting critical shorelands of streams and lakes, restoring land, wetlands, and wetland-associated watersheds, and improving connectivity and access to outdoor recreation.

IV. OUTLINE OF PROJECT RESULTS:

RESULT 2: Restore and Enhance Significant Habitat

Description: One MeCC partner restored and/or enhanced 133 acres of significant biological communities and wildlife habitat within the MeCC mapped corridors of the Lower Minnesota River Watershed. All restoration and enhancement work is permanently protected and managed by the U.S. Fish and Wildlife Service as part of the Minnesota Valley National Wildlife Refuge. Restoration and management plans were developed prior to restoration work. An additional 23 acres were restored/enhanced using other non-state funds. For further detail, please see Friends of the Minnesota Valley's individual work program.

Summary Budget Information for Result 2: ENRTF Budget: \$ 50,000
Amount Spent: \$ 17,491
Balance: \$ 32,509

Deliverable	Completion Date	Budget
1. Restored/Enhanced 133 acres	6/30/2012	\$17,491

Result Completion Date: 6/30/2012.

Final Report Summary: One partner organization restored approximately 133 acres of significant biological communities and wildlife habitat with Phase V supplemental funding, as well as an additional 23 acres through other non-state funds.

A summary of the sub-result is provided below. For additional information and details on projects and expenditures, please see Tables A and B and the individual final report.

2.2: Lower Minnesota Watershed Restoration and Enhancement Project – Friends of the Minnesota Valley

Within the focus area, Friends of the Minnesota Valley (FMV) was able to successfully restore and enhance 30 acres of native wet prairie, 74 acres of native dry sand-gravel oak savanna, and 29 acres of native dry sand-gravel prairie with LCCMR funds during MeCC Phase V Supplement for a total acreage of 133 acres. FMV also restored an additional match acreage of 14 acres of native dry sand-gravel oak savanna and 9 acres of native dry sand-gravel prairie with non-LCCMR, non-state funds.

All work was completed on four Minnesota Valley National Wildlife Refuge Units and included cutting and herbicide treatment of non-native woody brush species such as buckthorn, honeysuckle, prickly ash, eastern red cedar, and Siberian elm. Ecological restoration and management plans were developed prior to restoration work, with the underlying goal to restore a self-sustaining ecosystem.

Due to late and persistent flooding, access to the 84-acre marsh project in the Louisville Swamp Unit was prohibited and, as a result, FMV shifted its focus to upland restoration, as described in its amended work program. This shift accounts for FMV’s inability to spend the entirety of the 2010 LCCMR-approved appropriation.

RESULT 3: Acquire Significant Habitat

Description: Three MeCC partners protected 494 acres of critical habitat or major landscape connections within the scientifically determined MeCC mapped corridors through the acquisition of fee title land and conservation easements. Work focused

on high-priority, urgent opportunities that supplement and enhance the work done under prior phases of this grant. An additional 454 acres were protected using other, non-state funds. For further detail, please see individual work programs for Minnesota Land Trust, Trust for Public Land, and Minnesota Valley National Wildlife Refuge, Inc.

Summary Budget Information for Result 3:

ENRTF Budget:	\$ 1,700,000
Amount Spent:	\$ 1,630,220
Balance:	\$ 69,780

Deliverable	Completion Date	Budget
1. Protected 494 acres of significant habitat	6/30/2012	\$1,630,220

Result Completion Date: 6/30/2012.

Final Report Summary: Three partner organizations acquired fee title or conservation easements on 5 sites, protecting a total of 494 acres. Acquisition of an additional 454 acres was completed using other funds.

A summary of each sub-result is provided below. For additional information and details on projects and expenditures, please see Tables A and B and the individual final reports.

3.1: Critical Land Protection Program fee title & conservation easement acquisition- The Trust for Public Land

The Trust for Public Land (TPL) successfully secured fee title on 50.2 ENRTF acres of 407 total acquired acres. TPL then conveyed these lands to public agencies for permanent protection. Individual project successes include:

- TPL spent \$552,000 2010 ENRTF funds to protect 10.8 ENRTF acres of land as part of a larger 69-acre purchase of a high biodiversity corridor including forest, bluffland, wetland and rare calcareous fen. TPL conveyed the land to the Department of Natural Resources as the Savage Fen SNA on the Credit River addition.
- TPL spent \$338,000 2010 ENRTF to protect 39.4 ENRTF acres of land as part of a 338-acre acquisition of one of the largest undeveloped and contiguous tracts of open space in the Twin Cities Metro Area. TPL then conveyed the land to Anoka County. Located at the confluence of Cedar Creek and the Rum River, this land will be managed by the County as the Cedar Creek Conservation Area.

3.2: Protecting significant habitat by acquiring conservation easements – Minnesota Land Trust

The Minnesota Land Trust completed two perpetual conservation easements with 2010 ENRTF funding that collectively protect 374 acres of land and more than 700

feet of shoreline. One easement was purchased at a bargain price, and one easement was donated.

The Land Trust also purchased two additional easements that used both 2009 and 2010 ENRTF funding. Because the accomplishment for these two projects were reported as part of the 2009 report, the projects are described in their individual report but acreage for these two projects are not counted in the 2010 reports to avoid double-counting.

All four projects represent unique opportunities to protect high quality natural habitat, riparian areas, and to build upon prior land protection work by the Land Trust at several priority sites:

- Scandia: 294-acre property, Washington County
- Emmans Farm: 80-acre property, Anoka County
- Deer Lake: 45 acre property, Anoka County*
- Camp Kingswood: 44-acre property, Hennepin County*

The total value for the two easements acquired with ENRTF 2010 funds is \$1,242,000. The donated value is \$1,162,000. Therefore, the Land Trust was able to leverage significant private donation with the State's investment in these projects.

**As noted above, acreage accomplishments for these two projects are only counted as part of the 2009 ENRTF grant.*

3.3: Fee Acquisition for the MN Valley National Wildlife Refuge – Minnesota Valley National Wildlife Refuge Trust, Inc.

The Minnesota Valley Trust acquired 103 acres of priority lands in Scott County to expand the St. Lawrence Unit of the Minnesota Valley National Wildlife Refuge. Of the 103 acres acquired, 70 acres were acquired with Environment and Natural Resources Trust Fund and 33 acres were acquired with other private, non-state funds. Actual grant acres is less than projected grant acres (93) due to higher land values than were anticipated at the time the work program was written.

An additional 63.71 acres were acquired from two other landowners using other private, non-state funds as match of the ENRTF grant. Those acquisitions expand the Jessenland Unit of the Minnesota Valley Refuge in Sibley County. The total leverage to this project was 96.71 acres acquired using other non-state funds.

All acquisition acres are within the expansion boundaries for the Refuge as identified through a public planning process by the US Fish and Wildlife Service and documented in the Refuge's "Comprehensive Conservation Plan." After any needed restoration and enhancement, the lands will be donated to the USFWS for perpetual management as part of the Minnesota Valley National Wildlife Refuge. They will be managed for wildlife and open to the public for wildlife-dependent recreation, including hunting, fishing, wildlife observation, photography, wildlife interpretation and environmental education.

V. TOTAL ENRTF PROJECT BUDGET: \$1,647,711

Please see also the attached Table B.

Personnel: \$ 27,005

Contracts: \$ 9,415

Equipment/Tools/Supplies: \$ 3,076

Acquisition Including Permanent Easements: 1,598,215

Easement Stewardship: \$ 10,000

TOTAL ENRTF PROJECT BUDGET: \$ 1,647,711

Explanation of Capital Expenditures Greater Than \$3,500: N/A

VI. PROJECT STRATEGY:

A. Project Partners: Partners included in this supplemental phase include Trust for Public Land, Minnesota Land Trust, Friends of the Minnesota Valley, MN Valley National Wildlife Refuge Trust Inc. We also closely coordinated with the other MeCC and non-MeCC partners including DNR SNA, Anoka County, USFWS, and private landowners.

B. Project Impact and Long-term Strategy: This project advanced the long-term strategy of the Metro Conservation Corridors, launched in partnership with the LCCMR in 2003 to accelerate the protection and restoration of critical habitat in the greater Twin Cities Metropolitan Area. This 16 county area is in the midst of expansion and development that causes habitat loss and fragmentation and permanently converts high quality natural areas to urban uses.

The work of the MeCC partnership is targeted within *science-based corridors* and is guided by the Minnesota Statewide Conservation and Preservation Plan, Minnesota's Comprehensive Wildlife Conservation Strategy, as well as numerous local and resource-specific plans. This project addressed the following recommendations of the Statewide Conservation and Preservation Plan:

- Protect priority land habitats
- Protect critical shorelands of streams and lakes
- Restore land, wetlands, and wetland-associated watersheds
- Improve connectivity and access to outdoor recreation

Additionally, this project addressed our state's need to:

- Protect and enhance critical habitat for a vast variety wildlife and rare plant species, including "Species in Greatest Conservation Need."
- Strengthen our community's resilience to climate change.

C. Other Funds Spent during the Project Period: Partners leveraged \$\$2,614,820 in other non-state funds. Partners also spent \$4,420,500 of other state funds on acquisition and restoration activities during the project period.

D. Spending History:

Phase I (2003) - \$4,850,000 ETF
Phase II (2005) - \$3,530,000 ETF
Phase III (2007) - \$2,500,000 ETF
Phase IV (2008) - \$3,150,000 ETF
Phase V (2009) - \$3,375,000 ETF

VII. DISSEMINATION: As projects were completed, the individual partners were encouraged to publicize accomplishments through press releases, organization newsletters and websites. These efforts resulted in information being distributed to the public through websites, email lists, daily and weekly newspapers, newsletters, and other print materials. Additionally, the MeCC Partnership maintains an interactive public web map that shows the locations of MeCC projects over time.

This web map can be accessed at:

<http://www.dnr.state.mn.us/maps/MeCC/mapper.html>.

VIII. REPORTING REQUIREMENTS: Periodic work program progress reports were February 1 and August 1 of each year, starting in February 2011. This is the final work program report.

IX. RESEARCH PROJECTS: NA

Metro Conservation Corridors 2010 - Phase V Supplemental
Table A: Summary of Funding & Accomplishments
Final Report

LCCMR Appropriated Dollars: \$1,750,000

Result/Activity	Partner	ENRTF 2009 Funds			Other Funds		Total Project Funds Spent (ENRTF, Other State Funds & Non-State Funds combined)	ENRTF	Other Funds	Total Project Acres Completed (ENRTF & Other Funds combined)
		ENRTF 2010 Funds Allocated	ENRTF 2010 Funds Spent	ENRTF 2010 Funds Balance	Other State Funds Spent	Other Non-State Funds Spent		ENRTF 2010 Acres Completed	Other Funds Acres Completed	
2. Restore & Enhancement Significant Habitat										
2.4. Lower Minnesota River Watershed Restoration & Enhancement Project	Friends of MN Valley	\$ 50,000	\$ 17,491	\$ 32,509		\$ 31,174	\$ 48,665	133	23	156
SUBTOTAL		\$ 50,000	\$ 17,491	\$ 32,509	\$ -	\$ 31,174	\$ 48,665	133.0	23.0	156
3. Acquire Significant Habitat										
3.1 Critical Lands Protection Program	The Trust for Public Land	\$ 890,000	\$ 890,000	\$ -	\$ 4,410,000	\$ 1,090,000	\$ 6,390,000	50	357	407
3.2. Protect Significant Habitat by Acquiring Conservation Easements	Minnesota Land Trust	\$ 485,000	\$ 415,220	\$ 69,780	\$ 10,500	\$ 1,169,500	\$ 1,595,220	374		374
3.3. Expansion of MN Valley National Wildlife Refuge	MN Valley NWR Trust, Inc.	\$ 325,000	\$ 325,000	\$ -		\$ 324,146	\$ 649,146	70	97	167
SUBTOTAL		\$ 1,700,000	\$ 1,630,220	\$ 69,780	\$ 4,420,500	\$ 2,583,646	\$ 8,634,366	494	454	948
TOTAL		\$ 1,750,000	\$ 1,647,711	\$ 102,289	\$ 4,420,500	\$ 2,614,820	\$ 8,683,031	627	477	1104

Metro Conservation Corridors 2010 Phase V Supplemental Table B: Budget Detail

Activity	Partners	LCCMR Funding					TOTAL	Budget Explanation (staff/contract services, development, equipment, other)
		Personnel	Contracts	Supplies	Acquisition	Other		
2. Restore & Enhance Significant Habitat								
2.4. Lower Minnesota River Watershed Restoration & Enhancement Project.	Friends of MinnesotaValley	\$ 5,000	\$ 9,415	\$ 3,076			\$ 17,491	Staff: 0.16 FTE; Contracts:earthwork contractors to install water control structures, build earthen dams, break drainage tile lines, field prep, seed installation, invasive species removal, etc.; Supplies: native seed and trees, water control structures, herbicide, etc. 50 acres restored.
SUBTOTAL		\$ 5,000	\$ 9,415	\$ 3,076	\$ -	\$ -	\$ 17,491	
3. Acquire Significant Habitat								
3.1 Critical Lands Protection Program	The Trust for Public Land				\$ 890,000		\$ 890,000	Fee title land acquisition of 50 acres plus an additional 357 acres with other funds.
3.2. Protect Significant Habitat by Acquiring Conservation Easements	Minnesota Land Trust	\$ 22,005			\$ 383,215	\$ 10,000	\$ 415,220	Staff: Staff expenses including salaries, benefits and related costs for Conservation directors or other land protection staff and staff attorney and other support staff; Acquisition: includes purchase price of easement(s); title work, title insurance; maps, GIS; appraisals, surveys, recording fees, etc.; Other: \$10,000 for easement stewardship. 374 acres protected.
3.3. Expansion of MN Valley National Wildlife Refuge	MN Valley National Wildlife Refuge Trust, Inc.				\$ 325,000		\$ 325,000	Fee title acquisition of 70 acres plus an additional 97 acres with other funds.
SUBTOTAL		\$ 22,005	\$ -	\$ -	\$ 1,598,215	\$ 10,000	\$ 1,630,220	
TOTAL		\$ 27,005	\$ 9,415	\$ 3,076	\$ 1,598,215	\$ 10,000	\$ 1,647,711	

2010 Project Abstract

For the Period Ending June 30, 2012

PROJECT TITLE: Metro Conservation Corridors-Phase V Supplement-Friends of the Minnesota Valley (2.4)

PROJECT MANAGER: Lori Nelson

AFFILIATION: Friends of the Minnesota Valley

MAILING ADDRESS: 10800 Lyndale Avenue South, Suite #120

CITY/STATE/ZIP: Bloomington, MN 55420

PHONE: 952-881-9065

E-MAIL: lnelson@friendsofminnvalley.org

WEBSITE: www.friendsofminnvalley.org

FUNDING SOURCE: Environment and Natural Resources Trust Fund

LEGAL CITATION: M.L. 2010, Chp. 362, sec. 2, Subd. 4(g)

APPROPRIATION AMOUNT: \$50,000

Overall Project Outcome and Results

Friends of the Minnesota Valley (FMV) undertook restoration of habitat for the Lower Minnesota River Watershed portion of the Metropolitan Conservation Corridors Project (MeCC) as a continuation of our wildlife habitat restoration within the Minnesota Valley National Wildlife Refuge and Wetland Management District (Refuge) and within the Lower Minnesota River Watershed.

The Friends' objectives were to complement and connect habitat restoration and management of Refuge lands with that being done by other entities. Project sites addressed the need to restore hydrology within floodplain communities and to restore upland communities such as native oak savanna and wet and dry prairies, resulting in the rehabilitation of nesting, breeding, and brood-rearing habitat for migratory waterfowl in wetland areas and habitat for four documented species in upland areas. Due to late and persistent flooding, our access to the wetland site was prohibited and, as a result, we shifted our focus to upland restoration, as described in our amended work program.

FMV and our partners were able to successfully restore and enhance 30 acres of native wet prairie, 74 acres of native dry sand-gravel oak savanna, and 29 acres of native dry sand-gravel prairie with LCCMR funds during MeCC Phase V Supplement for a total acreage of 133 acres. We also restored additional match acreage of 14 acres of native dry sand-gravel oak savanna and 9 acres of native dry sand-gravel prairie with non-LCCMR, non-state funds. All work was completed on four Refuge Units and included cutting and herbicide treatment of non-native woody brush species such as buckthorn, honeysuckle, prickly ash, eastern red cedar, and Siberian elm. Our project data is publicly accessible by contacting the Friends, through information disseminated through our newsletter which is distributed to our 1,200 active members, our annual report, on our website, and through information provided by the MeCC Partnership.

Project Results Use and Dissemination

As projects were completed, Friends of the Minnesota Valley publicized project accomplishments through the Friends' quarterly newsletter, our annual report, and the posting of project information on our website. Other dissemination of information occurred through the Metro Conservation Corridors partnership and on the Metro Corridors website.

Environment and Natural Resources Trust Fund 2010 Work Program Final Report

Date of Report: August 15, 2012

M.L. 2010

Date of Next Status Report: FINAL REPORT

Date of Work Program Approval: June 9, 2010

Project Completion Date: June 30, 2012

I. PROJECT TITLE: Metro Conservation Corridors – Phase V Supplement– Friends of the MN Valley – 2.4, Lower Minnesota River Watershed Restoration & Enhancement Project [M.L. 2010]

Project Manager: Lori Nelson
Affiliation: Friends of the Minnesota Valley
Mailing Address: 10800 Lyndale Avenue South, Suite 120
City / State / Zip: Bloomington, MN 55420
Telephone Number: 952-881-9065
E-mail Address: lnelson@friendsofminnvalley.org
FAX Number: 952-881-3174
Web Site Address: www.friendsofminnvalley.org

Location: Lower Minnesota River Watershed of Carver, Hennepin, Le Sueur, Sibley, and Scott Counties

Total Trust Fund Project Budget:	M.L. 2009	M.L. 2010	Total
Trust Fund Appropriation:	\$90,000	\$50,000	\$140,000
Minus Amount Spent:	\$89,988.88	\$17,491.47	\$107,480.35
Equal Balance:	\$11.12	\$32,508.53	\$32,519.65

Legal Citation:

M.L. 2009, Chp. 143, Sec. 2, Subd. 4(f)

Appropriation Language:

\$3,375,000 is from the trust fund to the commissioner of natural resources for the fifth appropriation for acceleration of agency programs and cooperative agreements. Of this appropriation, \$2,185,000 is for Department of Natural Resources agency programs and \$1,190,000 is for agreements as follows: \$380,000 with the Trust for Public Land; \$90,000 with Friends of the Mississippi River; \$155,000 with Great River Greening; \$250,000 with Minnesota Land Trust; \$225,000 with Minnesota Valley National Wildlife Refuge Trust, Inc.; and \$90,000 with Friends of the Minnesota Valley for the purposes of planning, restoring, and protecting important natural areas in the metropolitan area, as defined under Minnesota Statutes, section 473.121, subdivision 2, and portions of the surrounding counties, through grants, contracted services, technical assistance, conservation easements, and fee title acquisition. Land acquired with this appropriation must be sufficiently improved to meet at least minimum management standards as determined by the commissioner of natural resources. Expenditures are limited to the identified project corridor areas as defined in the work program. This appropriation may not be used for the purchase of residential structures, unless expressly approved in the work program. All conservation easements must be perpetual and have a natural resource management plan. Any land acquired in fee title by

the commissioner of natural resources with money from this appropriation must be designated as an outdoor recreation unit under Minnesota Statutes, section 86A.07. The commissioner may similarly designate any lands acquired in less than fee title. A list of proposed restorations and fee title and easement acquisitions must be provided as part of the required work program. All funding for conservation easements must include a long-term stewardship plan and funding for monitoring and enforcing the agreement. To the maximum extent practical, consistent with contractual easement or fee acquisition obligations, the recipients shall utilize staff resources to identify future projects and shall maximize the implementation of biodiverse, quality restoration projects in the project proposal into the first half of the 2010 fiscal year.

M.L. 2010, Chp. 362 , Sec. 2, Subd. 4(g)

Appropriation Language:

\$1,750,000 is added to Laws 2009, chapter 143, section 2, subdivision 4, paragraph (f), from the trust fund to the commissioner of natural resources for acceleration of agency programs and cooperative agreements. Of this appropriation, \$1,750,000 is for agreements as follows: \$890,000 with the Trust for Public Land; \$485,000 with Minnesota Land Trust; \$325,000 with Minnesota Valley National Wildlife Refuge Trust, Inc.; and \$50,000 with Friends of the Minnesota Valley for planning, restoring, and protecting important natural areas in the metropolitan area, as defined under Minnesota Statutes, section 473.121, subdivision 2, and portions of the surrounding counties, through grants, contracted services, technical assistance, conservation easements, and fee title acquisition. Land acquired with this appropriation must be sufficiently improved to meet at least minimum management standards as determined by the commissioner of natural resources. Expenditures are limited to the identified project corridor areas as defined in the work program. This appropriation may not be used for the purchase of residential structures, unless expressly approved in the work program. All conservation easements must be perpetual and have a natural resource management plan. Any land acquired in fee title by the commissioner of natural resources with money from this appropriation must be designated as an outdoor recreation unit under Minnesota Statutes, section 86A.07. The commissioner may similarly designate any lands acquired in less than fee title. A list of proposed restorations and fee title and easement acquisitions must be provided as part of the required work program. All funding for conservation easements must include a long-term stewardship plan and funding for monitoring and enforcing the agreement.

II. and III. FINAL PROJECT SUMMARY:

M.L. 2010 FINAL PROJECT SUMMARY:

Friends of the Minnesota Valley (FMV) undertook restoration of habitat for the Lower Minnesota River Watershed portion of the Metropolitan Conservation Corridors Project (MeCC) as a continuation of our wildlife habitat restoration within the Minnesota Valley National Wildlife Refuge and Wetland Management District (Refuge) and within the Lower Minnesota River Watershed.

The Friends' objectives were to complement and connect habitat restoration and management of Refuge lands with that being done by other entities. Project sites addressed the need to restore hydrology within floodplain communities and to restore upland communities such as native oak savanna and wet and dry prairies, resulting in the rehabilitation of nesting, breeding, and brood-rearing habitat for migratory waterfowl in wetland areas and habitat for four documented species in upland areas. Due to late and persistent flooding, our access to the wetland site was prohibited and, as a result, we shifted our focus to upland restoration, as described in our amended work program.

FMV and our partners were able to successfully restore and enhance 30 acres of native wet prairie, 74 acres of native dry sand-gravel oak savanna, and 29 acres of native dry sand-gravel prairie with LCCMR funds during MeCC Phase V Supplement for a total acreage of 133 acres. We also restored additional match acreage of 14 acres of native dry sand-gravel oak savanna and 9 acres of native dry sand-gravel prairie with non-LCCMR, non-state funds. All work was completed on four Refuge Units and included cutting and herbicide treatment of non-native woody brush species such as buckthorn, honeysuckle, prickly ash, eastern red cedar, and Siberian elm. Our project data is publicly accessible by contacting the Friends, through information disseminated through our newsletter which is distributed to our 1,200 active members, our annual report, on our website, and through information provided by the MeCC Partnership.

IV. OUTLINE OF PROJECT RESULTS:

Result/Activity 1: Restore and/or enhance significant habitat

M.L. 2010:

Restore and enhance 50 acres of significant biological communities and wildlife habitat throughout the MeCC mapped corridors of the Lower Minnesota River Watershed within Carver, Le Sueur, Sibley, and/or Scott Counties. An additional 25 acres will be restored/enhanced using other, non-state funds.

Restoration efforts will focus on public lands including the Minnesota Valley National Wildlife Refuge and on lands that will become new refuge units purchased by the Minnesota Valley Trust, Inc. Projects will be selected based on but not limited to: ecological importance of area, based on size, habitat quality, buffering of existing high quality habitat, water quality benefits, connectivity to other natural areas, matching funds, and partner interest and commitment.

Friends of the MN Valley and its partners will restore and enhance the hydrology of wetlands such as shallow lakes, for the benefit of wildlife and water quality, plant retired agricultural fields to prairie using native ecotype seed, remove and manage exotic species, and restore important floodplain forest communities along the Minnesota River. Following local ecotype guidelines, only native plant species will be used with specific native seed mixes being adjusted for local site conditions and availability. Restoration and management plans will be developed prior to restoration work. Contracts will be awarded based upon a competitive, experience, and performance basis.

All restoration and enhancement work will be permanently protected and managed by the U.S. Fish and Wildlife Service as part of the Minnesota Valley National Wildlife Refuge.

Ecological restoration and management plans will be developed prior to restoration work. With the underlying goal to restore a self sustaining ecosystem, the restoration plans meet or exceed the project requirements as laid out by the LCCMR (M.L. 2009, Chap. 143, Sec. 2, Subd. 11. Project Requirements) and utilize natural processes to the extent possible to help establish and maintain the best restoration. Elements of the restoration and management plans will include a description of current conditions including biotic and abiotic elements; descriptions of target communities; descriptions of proposed restoration methodology; evaluation processes utilized for determining the effectiveness of restoration; and proposed ongoing management activities and responsibilities. Restoration and

management plans will be developed by the U.S. Fish & Wildlife Service in consultation with Friends of the Minnesota Valley.

See attached project list.

Summary Budget Information for Result/Activity 1:

	Total	M.L. 2009	M.L. 2010
Trust Fund Budget:	\$ 140,000	\$90,000	\$50,000
Amount Spent:	\$ 13,032	\$89,989	\$17,491.47
Balance:	\$126,968	\$11	\$32,508.53

Deliverable/Outcome	Completion Date	Budget
1. M.L. 2009 Restore and/or enhance 90 acres	June 15, 2011	\$ 90,000
2. M.L. 2010 Restore and/or enhance 50 acres	June 30, 2012	\$50,000

Result Completion Date: M.L. 2009: June 15th, 2011; M.L. 2010: June 30, 2012

M.L. 2010 Final Report Summary (August 2012):

Within the focus area, Friends of the Minnesota Valley has restored and enhanced 133 acres of significant biological communities and wildlife habitat throughout the MeCC mapped corridors of the Lower Minnesota River Watershed within Carver, Hennepin, Le Sueur, Sibley, and/or Scott Counties. An additional 23 acres was restored/enhanced using other, non-state funds.

Restoration efforts focused on public lands including the Minnesota Valley National Wildlife Refuge. Priority was given to permanently protected lands. Projects were selected based on but not limited to: ecological importance of area, based on size, habitat quality, buffering of existing high quality habitat, water quality benefits, connectivity to other natural areas, matching funds, and partner interest and commitment.

Friends of the Minnesota Valley and its partners removed and managed exotic species, and restored important upland communities along the Minnesota River. All contracts were awarded based upon a competitive, experience, and performance basis.

Ecological restoration and management plans were developed prior to restoration work. With the underlying goal to restore a self-sustaining ecosystem, the restoration plans met or exceed the project requirements as laid out by the LCCMR [M.L. 2010, Chap. 362, Sec. 2, Subd. 4(g)]. Project Requirements) and utilized natural processes to the extent possible to help establish and maintain the best restoration. Elements of the restoration and management plans include a description of current conditions including biotic and abiotic elements; descriptions of target communities; descriptions of proposed restoration methodology; evaluation processes utilized for determining the effectiveness of restoration; and proposed ongoing management activities and responsibilities. Restoration and management plans were developed by the U.S. Fish & Wildlife Service in consultation with Friends of the Minnesota Valley.

St. Lawrence Unit

Friends of the Minnesota Valley, along with the U.S. Fish & Wildlife Service, successfully treated 30 acres of invasive woody brush species such as buckthorn, honeysuckle, prickly ash, eastern red cedar, and Siberian Elm at the St. Lawrence Unit of the Minnesota Valley National Wildlife Refuge in order to restore native wet prairie habitat. Treatment consisted of cutting and herbicide treatment of non-native species, based on community descriptions by

the Minnesota Department of Natural Resources' County Biological Survey. All project costs were paid by Friends of the Minnesota Valley with Phase V Supplement funding for a total project area of 30 acres. Match dollars from partners includes USFWS (\$1,170) and FMV (\$1,000).

Jessenland Unit

Friends of the Minnesota Valley, along with the U.S. Fish & Wildlife Service, successfully restored 74 acres of native oak savanna at the Minnesota Valley National Wildlife Refuge's Jessenland Unit. Treatment consisted of cutting and herbicide treatment of non-native species such as buckthorn, honeysuckle, prickly ash, eastern red cedar, and Siberian elm. All project costs were paid by Friends of the Minnesota Valley with Phase V funding for a total project area of 74 acres. Partner match dollars include USFWS (\$3,125) and FMV (\$1,000).

Upgrala Unit

Friends of the Minnesota Valley, along with the U.S. Fish & Wildlife Service, successfully restored 38 acres of native dry sand-gravel prairie at the Minnesota Valley National Wildlife Refuge's Upgrala Unit. Treatment consisted of cutting and herbicide treatment of non-native species such as buckthorn, honeysuckle, prickly ash, eastern red cedar, and Siberian elm. All project costs were paid by Friends of the Minnesota Valley with Phase V funding for a total project area of 38 acres. Partner match dollars include USFWS (\$1,482), Conservation Corps of Minnesota (\$6,462), and FMV (\$1,000).

Rapids Lake Unit

Friends of the Minnesota Valley, along with the U.S. Fish & Wildlife Service, successfully restored 14 acres of native dry sand-gravel oak savanna at the Minnesota Valley National Wildlife Refuge's Rapids Lake Unit. Treatment consisted of cutting and herbicide treatment of non-native species such as buckthorn, honeysuckle, prickly ash, eastern red cedar, and Siberian elm. All project costs were paid by Friends of the Minnesota Valley with Phase V funding for a total project area of 14 acres. Partner match dollars include USFWS (\$546), Conservation Corps of Minnesota (\$10,074), and FMV (\$1,000).

Jailhouse Marsh at Duck Lane (Louisville Swamp Unit)

Friends of the Minnesota Valley, along with the U.S. Fish & Wildlife Service, originally planned to restore a minimum of 50 acres of this 84-acre marsh to support Type I, II, and III wetlands. Unfortunately, the persistent flooding which caused the earthen dike and water control structure to fail at this unit also prevented us from accessing the project site as planned to complete this portion of our amended work plan. Minnesota River flooding in late Summer and Fall of 2011 prevented the construction of the wetland restoration project at Jailhouse Marsh. Restoration project work re-started in the Spring of 2012, when permits were renewed, construction features restaked, and contractors solicited. The project area flooded again during May through June 2012. In mid-June it became apparent to the Friends and the U.S. Fish & Wildlife Service, which had been closely monitoring river level forecasts, that wetland restoration construction activities could not be completed within the MeCC Phase V Supplement project and grant period. After consulting with LCCMR staff, the partners made a decision at that time to shift the focus of our restoration activities to upland areas within the approved work plan.

This shift in focus from the large wetland restoration project at Jailhouse Marsh to the invasive species removal activities at the St. Lawrence, Jessenland and Upgrala Units also accounts for Friends of the Minnesota Valley's inability to spend the entirety of the 2010 LCCMR-approved appropriation. The invasive species removal work in the upland units was

significantly less expensive than the projected costs for replacement of the earthen dike and water control structure at the Jailhouse Marsh. Although some preparatory work required the expenditure of LCCMR dollars for personnel costs at Jailhouse Marsh, no contractor or equipment dollars were spent at this project site. Due to surveying, engineering and other preparatory work onsite in anticipation of completing the Jailhouse Marsh project, there were costs incurred by the U.S. Fish & Wildlife Service and the Friends and which were expended on this project. Partner match dollars include USFWS (\$3,315) and FMV (\$1,000).

V. TOTAL TRUST FUND PROJECT BUDGET: 90,000

M.L. 2009:

Personnel: \$15,000 - FMV Watershed Initiative Coordinator (.48 FTE). Total expended during grant period: \$14,998.88.

Contracts: \$ 50,000 (for earthwork contractors to install water control structures, build earthen dams, break drainage tile lines, field prep, seed installation, invasive species removal, etc.) Total expended during grant period: \$50,000

Equipment/Tools/Supplies: \$ 25,000 (for native seed and trees, water control structures, herbicide, chainsaws, gloves, etc.) Total expended during grant period: \$24,990.

Acquisition, including easements: \$ NA

Travel: \$ 0

Other: \$ 0

TOTAL 2009 TRUST FUND PROJECT BUDGET: \$ 90,000

Total expended during grant period: \$89,988.88.

Explanation of Capital Expenditures Greater Than \$3,500: NA

M.L. 2010:

Personnel: \$ 5,000 - Watershed Initiative Coordinator (.16 FTE)

Contracts: \$ 35,000 (for earthwork contractors to install water control structures, build earthen dams, break drainage tile lines, field prep, seed installation, invasive species removal, etc.)

Equipment/Tools/Supplies: \$ 10,000 for supplies only (includes native seed and trees, water control structures, herbicide). Herbicide cost is estimated at approximately \$500, water control structures at around \$2,500 and native seed and trees at around \$7,000.

Acquisition (Fee Title or Permanent Easements): \$ 0

Travel: \$ 0

Additional Budget Items: \$ 0

TOTAL 2010 ENRTF PROJECT BUDGET: \$50,000

Explanation of Capital Expenditures Greater Than \$3,500: NA

VI. PROJECT STRATEGY:

A. Project Partners: U.S. Fish & Wildlife Service, MN Valley National Wildlife Refuge Trust, Inc., local units of government, private landowners, and other partners.

B. Project Impact and Long-term Strategy: Restoration efforts will increase breeding/migratory habitat for resident/migrant waterfowl including wood ducks and lesser scaup, resident/migrant shorebirds, as well as a myriad of other species including resident

game species such as pheasant and deer. Restoration efforts will improve and protect the water quality of the Minnesota River and its tributaries through wetland restoration and restoring retired cropland and publicly-owned permanently-protected lands to native habitat such as prairie, oak savanna, and floodplain forest. Friends of the Minnesota Valley will continue to restore and enhance significant biological communities throughout the MeCC mapped corridors within the Lower Minnesota River Watershed.

C. Other Funds Proposed to be spent during the Project Period:

Original anticipated match was \$25,000. Match actually acquired and spent during the grant period totaled \$31,174.

D. Spending History: ETF - 2001: \$ 0; 2003: \$ 18,000 (BRP); 2005: \$ 40,000 (MeCC)
2007: \$34,000; 2008: \$107,000; 2009: \$90,000
Other Funds - : \$ 0; 2003: \$ 0; 2005: \$ 5,000 (MeCC); 2007: \$5,000
2009: \$54,000

VII. DISSEMINATION:

M.L. 2010

As projects were completed, Friends of the Minnesota Valley publicized project accomplishments through the Friends' quarterly newsletter, our annual report, and the posting of project information on our website. Other dissemination of information occurred through the Metro Conservation Corridors partnership and on the Metro Corridors website.

VIII. REPORTING REQUIREMENTS: Periodic work program progress reports will be submitted not later than February 2010, August 2010, February 2011, August 2011, February 2012. A final work program report and associated products will be submitted between June 30 and August 1, 2011 for M.L. 2009 and between June 30 and August 1, 2012 for M.L. 2010 as requested by the LCCMR.

IX. RESEARCH PROJECTS: NA.

Proposed Restoration Projects - Friends of the MN Valley Phase V and Phase V Supplemental

Jessenland Unit Restoration Sibley County Wetland/Savanna/Floodplain Forest -- 2011 Completion -- 400 Acres in Unit

Approximately 25 acres of Type I, II, and VI wetlands will be restored by breaking drain tile, shallow scraping, and constructing earthen dams within drainage ditches. Wetlands will also be seeded with native wetland species. Local ecotype oak savanna grasses and forbs have been planted to restore approximately 101 acres. After the grasses are established, oak trees will be planted to complete the oak savanna restoration.-Exotic species such as buckthorn will be mechanically and chemically treated to allow native species to re-establish or expand. In addition, woody species will be removed to create firebreaks for future fire management of the oak savanna.

This restoration is an important piece in linking floodplain forest habitats in the Jessenland Conservation Area Boundary. When combined with adjacent downstream parcels,

the restoration will connect the Jessenland Unit of MN Valley National Wildlife Refuge and complement the permanently protected RIM and CREP habitat easements on the Scott County side of the Minnesota River.

Henderson Unit Restoration Sibley/Scott County Wetland/Floodplain
Forest -- 2011 Completion – 1,250 Acres in Unit

Agricultural fields totaling 80 acres will be converted to floodplain forest and shallow riverine wetland habitats. Approximately 50 acres of Type I, II, and III wetlands will be restored by breaking drain tile, shallow scraping, and constructing earthen dams within drainage ditches. Wetlands will also be seeded with native local ecotype wetland species. Exotic species such as buckthorn will be mechanically and chemically treated to allow native species to re-establish or expand.

St. Lawrence Unit Restoration Scott County Wetland/Prairie
2011-2012 Completion – 160 Acres in Unit

The absence of fire has resulted in the encroachment of woody species within the wetland and prairie, specifically cedar trees. Approximately 35 acres of cedars and other woody species such as buckthorn and honeysuckle will be mechanically removed and chemically treated to allow native species to re-establish and expand. In addition, approximately 20 acres of Type I, II, and III wetlands will be restored by breaking drain tile, shallow scraping, and constructing earthen dams within drainage ditches. Wetlands will also be seeded with native local ecotype wetland species.

This restoration will provide high quality habitat for nesting, breeding, and brood-rearing of migratory waterfowl and birds. In addition, the close proximity to other permanently protected lands (state and federal) magnifies the potential benefit to wildlife, water quality, and recreational opportunities.

Upgrala Prairie Renovation Hennepin County Native Prairie
Restoration - 2011 Completion-32 acres in Unit.

The absence of fire has resulted in the encroachment of woody species within the prairie. The 4 acres of cedars, elms, and other woody species will be mechanically removed. Eleven (11) acres of non-native brush, such as buckthorn and honeysuckle, will be mechanically removed and chemically treated to allow native species to re-establish and expand. The prairie is part of the Minnesota Valley NWR and is identified by the MnCBS as a high-quality southern dry prairie remnant with four documented species listed on this site. The site is listed as a critical habitat type in the Minnesota Valley NWR/WMD Comprehensive Conservation Plan and is also recognized as a rare ecosystem in the Minnesota DNR Tomorrow's Habitat for the Wild and Rare Plan. This area is permanently-protected and open to public use because the prairie is managed by the USFWS.

Jailhouse Marsh at Duck Lane Scott County Wetland Restoration - 2012
Completion-1,000+ acres in Unit

River flooding has caused an earthen dike and fixed crest water control structures to fail, reducing the extent and quality of this wetland. With completion of this proposed work to replace the dike and water control structure, a minimum of 50 acres of this 84-acre marsh will be restored or enhanced to support Type I, II, & III wetlands.

The site is listed as a critical habitat type in the Minnesota Valley NWR/WMD Comprehensive Conservation Plan. This restoration will provide high-quality habitat for nesting, breeding, and brood-rearing of migratory waterfowl and birds. In addition, the close

proximity to permanently-protected state and federal lands magnifies the potential benefit to wildlife, water quality, and recreational opportunities.

Louisville Swamp Oak Savanna Restoration Scott County Oak Savanna
Restoration-2011 Completion – 1,000 acres in Unit

The Louisville Swamp Unit of the Minnesota Valley NWR includes many parcels of degraded oak savanna. With this project, restoration will be initiated on 5 acres of degraded oak savanna. This work will include mechanical removal of woody vegetation not associated with oak savanna ecosystems. Also included in this restoration phase is herbicide treatment of stumps (twice), seeding with oats to build a fine fuel base, and the application of prescribed fire.

The site is listed as a critical habitat type in the Minnesota Valley NWR/WMD Comprehensive Conservation Plan. Also, the project area is identified by the MnDNR's Minnesota County Biological Survey as supporting Dry Sand-Gravel Oak Savanna communities of significant (high) quality. With this project we will maintain that quality and expand the extent of savanna communities. Restoration and management activities for this project specifically implement those actions recommended for this habitat as identified in Minnesota's Comprehensive Wildlife Conservation Strategy *Tomorrow's Habitat for the Wild and Rare*.

Rapids Lake Prairie - Oak Savanna Restoration Carver County Native
Prairie & Oak Savanna - 2011 Completion –1,000 acres in Unit.

The Rapids Lake Unit of the Minnesota Valley NWR includes many areas of degraded prairie remnant intermixed with degraded oak savanna. With this project, restoration will be initiated on 35 acres of degraded remnant prairie and oak savanna. This work will include mechanical removal of woody vegetation not associated with prairie and oak savanna ecosystems. Also included in this restoration phase is herbicide treatment of stumps, and seeding with oats to stabilize erosive soils and build a fine fuel base for future prescribed fires.

The site is listed as a critical habitat type in the Minnesota Valley NWR/WMD Comprehensive Conservation Plan. Also, the project area is identified by the MnDNR's Minnesota County Biological Survey as supporting Southern Dry Prairie and Dry Sand-Gravel Oak Savanna communities of significant (high) quality. With this project we will maintain that quality and expand the extent of prairie and savanna communities. Restoration and management activities for this project specifically implement those actions recommended for this habitat as identified in Minnesota's Comprehensive Wildlife Conservation Strategy *Tomorrow's Habitat for the Wild and Rare*.

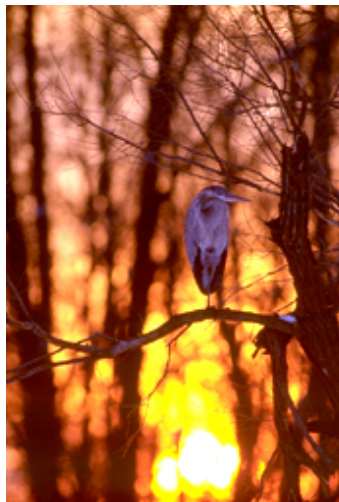
All properties are located within the Minnesota Valley National Wildlife Refuge and are permanently-protected by the U.S. Fish and Wildlife Service. After completion of ENRTF projects, the USFWS will manage and monitor the restoration and will ensure the long term success of the project through multiple mechanisms including prescribed fire, exotic species control, and ecological assessment.

Attachment A: Final Budget Detail for 2010 Projects - Friends of the MN Valley					
Project Title: <i>Metro Conservation Corridors – Phase V Supplement – Friends of the MN Valley – Lower Minnesota River Watershed Restoration & Enhancement Project</i>					
Project Manager Name: <i>Scott Sparlin, Watershed Initiative Coordinator</i>					
Trust Fund Appropriation: \$ 50,000					
1) See list of non-eligible expenses, do not include any of these items in your budget sheet					
2) Remove any budget item lines not applicable					
2010 Trust Fund Budget	<u>Result 1 Budget:</u>	<u>Amount Spent</u> <i>(date)</i>	<u>Balance</u> <i>(date)</i>	TOTAL BUDGET	TOTAL BALANCE
	Restore and/or enhance 50 Acres				
BUDGET ITEM					
PERSONNEL: wages and benefits <i>(Project Manager - Scott Sparlin- .16 FTE)</i>	5,000	5,000	0	5,000	0
Contracts					
Professional/technical <i>(for earthwork contractors to install water control structures, build earthen dams, break drainage tile lines, field prep, seed installation, invasive species removal, etc.)</i>	35,000	9,415	25,585	35,000	25,585
Supplies <i>(for native seed and trees, water control structures, herbicide):</i> <i>Herbicide (\$500)</i> <i>Native Seed & Trees (\$7,000)</i> <i>Water Control Structures (\$2,500)</i>	10,000	3,076	6,924	10,000	6,924
COLUMN TOTAL	\$50,000	\$17,491	\$32,509	\$50,000	\$32,509



CREATING A CONSERVATION LEGACY:

WILDLIFE HABITAT RESTORATION IN THE MINNESOTA RIVER VALLEY



2011-2012
HABITAT RESTORATION PROJECTS:
A PROSPECTUS

Friends of the Minnesota Valley



The River. The Land. The Future.



INTRODUCTION

Friends of the Minnesota Valley works to conserve the natural resources within the eleven-county Lower Minnesota River Watershed. The Friends is also one of three nongovernmental organizations working to improve the water quality of the Minnesota River. Founded in 1982, the Friends' first objective was to help establish the Minnesota Valley National Wildlife Refuge. The organization has a Valley-wide conservation vision and strives to protect resources beyond refuge boundaries by taking a watershed-based approach.

As part of our programmatic agenda, Friends of the Minnesota Valley restores native wildlife habitat in the Minnesota River Valley. Through our partnership and involvement in the Metropolitan Conservation Corridors Project, funded with proceeds from the Minnesota State Lottery and administered by the Legislative-Citizens Commission on Minnesota Resources, and with additional financial assistance provided by the McKnight Foundation and other private funders, we are actively restoring hundreds of acres of native habitat including native prairie, oak savanna, wetlands, shallow lakes, and other riparian habitat each year.

Our partners include the U.S. Fish & Wildlife Service, the Minnesota Valley National Wildlife Refuge Trust, other private conservation organizations, local soil and water conservation districts, and private landowners. For more information on Friends and the Minnesota Valley and our programs, please visit www.friendsofminvalley.org.



The refuge's wetlands provide habitat for waterfowl, such as this male wood duck.

HISTORICAL HABITAT

Early explorers' accounts and paintings provide glimpses of what the landscape resembled before widespread European settlement. Many explorers wrote descriptions about the rich flora and fauna and Native Americans inhabiting the Minnesota River Valley in the 1700s and 1800s. They described a landscape covered in tall grass, wetlands, shallow lakes and forested areas with numerous American Indian tribes living along the Minnesota River.

The area in which Friends of the Minnesota Valley is conducting wildlife habitat restoration in 2011-2012 is in commonly known as The Big Woods. At one time, a 2,000 to 3,000-square mile forest extended from the Mankato area north to Monticello. Filled with elm, sugar maple, basswood and oak, this deciduous forest stood in contrast to the surrounding immense prairie-wetland landscape. French explorers in the 17th Century called it bois fort or bois grand, later translated as the "Big Woods" by English-speaking settlers. Today, less than 2 percent of the original "Big Woods" remains after Euro-American settlers began to clear the forest to establish farms, plant crops and build cities (Minnesota State University Water Resources Center, *Minnesota River Trends*, 2009, page 4). In 1850, approximately 62% of The Big Woods was forest. By 1988, 62% of The Big Woods had been converted to farmland (Id.).

The Minnesota River runs through the middle of the once predominantly-forested Big Woods. The Mississippi River forms the northeastern boundary. Lakes and wetlands are common; more than 100 lakes are greater than 160 acres in size, and many are groundwater-controlled with no inlets or outlets. Twin Cities metropolitan area continues to expand into The Big Woods, and both farming and urbanization have led to dramatic changes in habitats. Water quality is also a conservation concern in this agricultural landscape (Minnesota Department of Natural Resources, *Tomorrow's Habitat for the Wild and Rare, Big Woods Sub-section Profile*, 2006, page 76). 121 Species in Greatest Conservation Need (SGCN) are known or predicted to occur within the Big Woods, the fourth most of all subsections in Minnesota. These SGCN include 55 species that are federal or state endangered, threatened, or of special concern. Big Woods habitats feature woodland birds such as red-shouldered hawks and warblers, savanna species such as Blanding's turtles and red-headed woodpeckers, and wetland species such as turtles, ospreys, Forster's terns, and black terns. The Minnesota River also provides habitat to many species. Smooth softshell turtles utilize exposed sand bars and south-facing cut-banks as basking and nest sites. Forested river terraces are occupied by milk snakes and western foxsnakes, while bull snakes and racers live among open sandy terraces (Id.).

The Minnesota River Basin is located in the so-called "duck factory," considered North America's best waterfowl breeding habitat and one of the most important duck breeding areas in the world. This area covers the southern part of Minnesota along with the Dakotas, Iowa and central Canada. Much of the prairie and wetlands originally found in the "duck factory" area have disappeared and what remains faces continued pressure to be broken up and drained for agricultural production. Ducks rely on upland areas around wetlands and shallow lakes for both nesting and as a food source. With the elimination of nearly 95 percent of wetlands in the basin over the last 80 years, there is less habitat and food sources for ducks. Many of the remaining wetlands have degraded water quality and quantity. The immense drainage system put in place across the basin has significantly decreased the duck population capability (*Minnesota River Trends*, page 52).

CURRENT RESTORATION GOALS

Friends of the Minnesota Valley is a restoration partner in the Metro Conservation

Corridors. Started in 2003, the Metro Conservation Corridors (MeCC) is a partnership of conservation organizations whose goal is to protect a series of connected corridors throughout the greater Twin Cities area. These corridors provide area citizens with open space, wildlife habitat, and water quality benefits.

With funding from the Environmental Trust Fund as recommended by the Legislative-Citizens Commission on Minnesota Resources, the project partners permanently protect and restore ecologically important land in predetermined corridors.

During the 2011 and 2012 field seasons, Friends of the Minnesota Valley plans to restore a minimum of 210 acres of significant biological communities and wildlife habitat throughout the MeCC-mapped corridors of the Lower Minnesota River Watershed within Carver, Hennepin, Le Sueur, Sibley, and/or Scott Counties. Our restoration projects focus on lands within the Minnesota Valley National Wildlife Refuge. We will focus our restoration efforts on publicly-accessible lands within the Minnesota Valley National Wildlife Refuge, within the Refuge's boundary expansion area, and on private lands. We will give priority to permanently-protected lands. Restorations on private lands will be protected through a minimum 10-year landowner agreement through the U.S. Fish and Wildlife's Partners For Fish and Wildlife Program. Projects will be selected based on but not limited to criteria such as the ecological importance of the restoration area, based on size, habitat quality, buffering of existing high quality habitat, water quality benefits, connectivity to other natural areas, matching funds, and partner interest and commitment.

Friends of the Minnesota Valley and its partners will restore and enhance the hydrology of wetlands such as shallow lakes, for the benefit of wildlife and water quality, plant retired agricultural fields to prairie using native ecotype seed, remove and manage exotic species, and restore important floodplain forest communities along the Minnesota River. Only native plant species will be used with specific native seed mixes being adjusted for local site conditions and availability. We will develop ecological restoration and management plans prior to beginning our restoration work.

Elements of the restoration and management plans will include a description of current conditions including biotic and abiotic elements; descriptions of target communities; descriptions of proposed restoration methodology; evaluation processes utilized for determining the effectiveness of restoration; and proposed ongoing management activities and responsibilities. Restoration and management plans will be developed by the U.S. Fish & Wildlife Service in consultation with Friends of the Minnesota Valley.

PLANNED RESTORATION PROJECTS

Project #1: Jessenland Unit, Sibley County Ecotypes: Wetland, Oak Savanna, Floodplain Forest

Description:

Restoration Phase I (Construction) – 400 Total Unit Acres/ 126 Minimum Restored Acres

Friends of the Minnesota Valley will restore approximately 25 acres of Type I, II, and VI wetlands by breaking drain tile, shallow scraping, and constructing earthen dams within drainage ditches. We will seed wetlands with native wetland species. Local ecotype oak savanna grasses and forbs have been planted to restore approximately 101 acres. After the grasses are established, we will plant oak trees to complete the oak savanna restoration. We will remove exotic species such as buckthorn through mechanical and chemical treatment to allow native species to re-establish or expand. In addition, woody species will be removed to create firebreaks for future fire management of the oak savanna.

Restoration Phase II (Management and Maintenance)

After the completion of Phase I, the land will be protected and managed in perpetuity by the U.S. Fish and Wildlife Service (USFWS). The USFWS will manage and monitor the restoration and will ensure the long-term success of the project through multiple mechanisms including prescribed fire, exotic species control, and ecological assessment.

Results and Benefits

This restoration is an important piece in linking floodplain forest habitats in the Jessenland Conservation Area Boundary. When combined with adjacent downstream parcels, the restoration will complete the Jessenland Unit of Valley National Wildlife Refuge and complement the permanently-protected Reinvest in Minnesota (RIM) and Conservation Reserve Enhancement Program (CREP) habitat easements on the Scott County side of the Minnesota River.



Picture depicting oak savanna habitat

Project #2: Henderson Unit, Scott & Sibley Counties Ecotypes: Wetland, Floodplain Forest

Description:

Restoration Phase I (Construction) – 1250 Total Unit Acres/ 130 Minimum Restored Acres

We will convert 80 acres currently in agricultural production to floodplain forest and shallow riverine wetland habitats. Approximately 50 acres of Type I, II, and III wetlands will be restored by breaking drain tile, shallow scraping, and constructing earthen dams within drainage ditches. We will also seed wetlands with native local ecotype wetland species. Exotic species such as buckthorn will be mechanically and chemically treated to allow native species to re-establish or expand.

Restoration Phase II (Management and Maintenance)

After completion of Phase I, the land will be protected and managed in perpetuity by the U.S. Fish and Wildlife Service (USFWS). The USFWS will manage and monitor the restoration and will ensure the long term success of the project through multiple mechanisms including prescribed fire, exotic species control, and ecological assessment.

Results and Benefits

Wetland and riparian habitat in the vicinity of the Henderson Unit that supports 22 species of ducks, geese and other waterbirds will be enhanced by this restoration project. Many other birds are known to frequent the area, including gulls, terns, hawks, ospreys, eagles, herons, egrets, rails, kingfishers, and swallows.



Picture depicting wetland habitat

Project #3: St. Lawrence Unit, Scott County Ecotypes: Wetland, Prairie

Description

Restoration Phase I (Construction) – 160 Total Unit Acres/ 20 Minimum Restored Acres

The absence of fire has resulted in the encroachment of woody species within the wetland and prairie, specifically cedar trees. Approximately 35 acres of cedars and other woody species such as buckthorn and honeysuckle will be mechanically removed and chemically treated to allow native species to re-establish and expand. In addition, approximately 20 acres of Type I, II, and III wetlands will be restored by breaking drain tile, shallow scraping, and constructing earthen dams within drainage ditches. Wetlands will also be seeded with native local ecotype wetland species.

Restoration Phase II (Management and Maintenance)

The property is located within the Minnesota Valley National Wildlife Refuge and is permanently protected by the U.S. Fish and Wildlife Service (USFWS). After completion of Phase I, the USFWS will manage and monitor the restoration and will ensure the long term success of the project through multiple mechanisms including prescribed fire, exotic species control, and ecological assessment.

Benefits and Results

This restoration will provide high quality habitat for nesting, breeding, and brood-rearing of migratory waterfowl and birds. In addition, the close proximity to other permanently-protected state and federal public lands magnifies the potential benefit to wildlife, water quality, and recreational opportunities.



Picture depicting prairie habitat

Project #4: Upgrala Unit, Hennepin County Ecotype: Prairie

Description

Restoration Phase I (Construction) – 32 Total Unit Acres/ 15 Minimum Restored Acres

The absence of fire has resulted in the encroachment of woody species within the prairie. The Friends and our partners will remove 4 acres of cedars, elms, and other woody species through mechanical means. Eleven (11) acres of non-native brush, such as buckthorn and honeysuckle, will be mechanically removed and chemically treated to allow native species to re-establish and expand.

Restoration Phase II (Management and Maintenance)

The property is located within the Minnesota Valley National Wildlife Refuge and is permanently protected by the U.S. Fish and Wildlife Service (USFWS). After completion of Phase I, the USFWS will manage and monitor the restoration and will ensure the long term success of the project through multiple mechanisms including prescribed fire, exotic species control, and ecological assessment.

Benefits and Results

The prairie is part of the Minnesota Valley National Wildlife Refuge and is identified by the Minnesota County Biological Survey as a high-quality southern dry prairie remnant with four documented species listed on this site. The site is listed as a critical habitat type in the Minnesota Valley National Wildlife Refuge/ Wetland Management District Comprehensive Conservation Plan and is also recognized as a rare ecosystem in the Minnesota Department of Natural Resources' Tomorrow's Habitat for the Wild and Rare Plan.



Photo provided courtesy of Scott Sharkey

Project #5: Jailhouse Marsh Unit, Scott County

Ecotype: Wetland

Description

Restoration Phase I (Construction) – 84 Total Unit Acres/ 50 Minimum Restored Acres

River flooding has caused an earthen dike and fixed crest water control structures to fail, reducing the extent and quality of this wetland. With completion of this proposed work to replace the dike and water control structure, a minimum of 50 acres of this marsh will be restored or enhanced to support Type I, II, & III wetlands.

Restoration Phase II (Management and Maintenance)

The property is located within the Minnesota Valley National Wildlife Refuge and is permanently protected by the U.S. Fish and Wildlife Service (USFWS). After completion of Phase I, the USFWS will manage and monitor the restoration and will ensure the long term success of the project through multiple mechanisms including prescribed fire, exotic species control, and ecological assessment.

Benefits and Results

The site is listed as critical habitat type in the Minnesota Valley National Wildlife Refuge/ Wetland Management District Comprehensive Conservation Plan. This restoration will provide high-quality habitat for nesting, breeding, and brood-rearing of migratory waterfowl and birds. In addition, the close proximity to permanently-protected state and federal lands magnifies the potential benefit to wildlife, water quality, and recreational opportunities.



Photo provided courtesy of Chad Gustafson

Project #6: Louisville Swamp Unit, Scott County

Ecotype: Oak Savanna

Description

Restoration Phase I (Construction) – 1,000 Total Unit Acres/ 5 Minimum Restored Acres

The Louisville Swamp Unit of the Minnesota Valley National Wildlife Refuge includes many parcels of degraded oak savanna. With this project, restoration will be initiated on 5 acres of degraded oak savanna. This work will include mechanical removal of woody vegetation not associated with oak savanna ecosystems. Also included in this restoration phase is herbicide treatment of stumps (twice), seeding with oats to build a fine fuel base, and the application of prescribed fire.

Restoration Phase II (Management and Maintenance)

The property is located within the Minnesota Valley National Wildlife Refuge and is permanently protected by the U.S. Fish and Wildlife Service (USFWS). After completion of Phase I, the USFWS will manage and monitor the restoration and will ensure the long term success of the project through multiple mechanisms including prescribed fire, exotic species control, and ecological assessment.

Benefits and Results

The site is listed as critical habitat type in the Minnesota Valley National Wildlife Refuge/ Wetland Management District Comprehensive Conservation Plan. Also, the project is identified by the Minnesota Department of Natural Resources' Minnesota County Biological Survey as supporting Dry Sand-Gravel Oak Savanna communities of significant (high) quality. With this project, we will maintain that quality and expand the extent of savanna communities. Restoration and management activities for this project specifically implement those actions recommended for this habitat as identified in Minnesota's Comprehensive Wildlife Conservation Strategy *Tomorrow's Habitat for the Wildlife and Rare*.



Project #7: Rapids Lake Unit, Carver County

Ecotype: Oak Savanna, Prairie

Description

Restoration Phase I (Construction) – 1,000 Total Unit Acres/ 35 Minimum Restored Acres

The Rapids Lake Unit of the Minnesota Valley National Wildlife Refuge includes many areas of degraded prairie remnant intermixed with degraded oak savanna. With this project, restoration will be initiated on 35 acres of degraded remnant prairie and oak savanna. This work will include mechanical removal of woody vegetation not associated with prairie and oak savanna ecosystems. Also included in this restoration phase is herbicide treatment of stumps and seeding with oats to stabilize erosive soils and build a fine fuel base for future prescribed fires.

Restoration Phase II (Management and Maintenance)

The property is located within the Minnesota Valley National Wildlife Refuge and is permanently protected by the U.S. Fish and Wildlife Service (USFWS). After completion of Phase I, the USFWS will manage and monitor the restoration and will ensure the long term success of the project through multiple mechanisms including prescribed fire, exotic species control, and ecological assessment.

Benefits and Results

The site is listed as critical habitat type in the Minnesota Valley National Wildlife Refuge/ Wetland Management District Comprehensive Conservation Plan. Also, the project is identified by the Minnesota Department of Natural Resources' Minnesota County Biological Survey as supporting Southern Dry Prairie and Dry Sand-Gravel Oak Savanna communities of significant (high) quality. With this project, we will maintain that quality and expand the extent of prairie and savanna communities. Restoration and management activities for this project specifically implement those actions recommended for this habitat as identified in Minnesota's Comprehensive Wildlife Conservation Strategy *Tomorrow's Habitat for the Wildlife and Rare*.



Photo provided courtesy of the U.S. Fish & Wildlife Service



Guarantee Our Outdoor Legacy: Support Habitat Restoration In the Minnesota River Valley

You can help make it possible for us to complete our profiled wildlife habitat restoration projects by making a contribution to Friends of the Minnesota Valley. Our funders, including the Minnesota Environment and Natural Resources Trust Fund and the McKnight Foundation, encourage and anticipate that the Friends and our partners will identify and raise matching funds to help support our work. Matching funds from non-state sources, such as Friends' members and supporters, help make annual grant applications for the Metro Conservation Corridors project more competitive. In addition, the McKnight Foundation will match donations for restoration projects at 100% up to \$10,000.

Each of our restoration projects can cost tens of thousands or even hundreds of thousands of dollars. Restoration is a sound investment but not an exact science. Projects are influenced by variables such as weather and field conditions and unforeseen circumstances sometimes require modification or substitution. A typical restoration project budget includes costs for professional and technical services such as engineering services for wetland restoration design; earthwork to install water control structures, break drainage tile lines, and build earthen dams; installation of native seed, field preparation, and removing and treating invasive species. Other costs include the acquisition of equipment and tools needed to complete restoration such as local ecotype native seed, chainsaws, gloves, water control structures, culverts, erosion matting and survey lath. We make sure our project planning and restoration dollars are used efficiently by working with the U.S. Fish & Wildlife Service to develop comprehensive ecological restoration and management plans prior to beginning our restoration work.

HOW YOU CAN HELP

Your support is key to the success of Friends of the Minnesota Valley's wildlife habitat restoration projects in the Minnesota River Valley. By making a contribution today, you can help ensure that wildlife in the Minnesota Valley National Wildlife Refuge and in the Minnesota River Watershed will have a sustainable future. You will also be investing in our outdoor legacy to ensure that future generations will be able to continue to enjoy our natural environment for many years to come.

MORE ABOUT YOUR GIFT

In return for your financial contribution, you will receive a donation letter to confirm your 100%-tax deductible donation to Friends of the Minnesota Valley. Of course, you will receive the reward of knowing that your gift goes directly to support the real, tangible restoration of critical habitat in the Valley.

Gifts can be given to support our restoration program as a whole or to support a specific restoration project. To learn more about our program or specific projects, or to arrange a meeting to discuss potential support of our program or a project, please contact Lori Nelson at 952-881-9065 or lnelson@friendsofmnvalley.org.

With your gift of **\$25** or more, you will receive a signed acknowledgment letter recognizing your support of our restoration program or designated project.

With your gift of **\$100** or more, you will receive an authentic, signed certificate of appreciation with a special thank-you letter from the Friends' President.

With your gift of **\$500** or more, you will receive a signed, framed certificate of appreciation and special thank-you letter, plus special recognition on our website, in our annual report, and at our annual dinner.

With your gift of **\$1,000** or more, you will receive all of the above, plus a beautiful bound project scrapbook including a project description, "before and after" pictures, and other details. This scrapbook is our special gift to you and can be displayed in your home or at your office.

Send your gift to: Friends of the Minnesota Valley, Attn: Restorations, P.O. Box 20697, Bloomington, MN 55420 OR give online at GiveMN.org.

Our promise: If project changes are required, we will contact you and make every effort to find an acceptable substitute restoration project.



The River. The Land. The Future.

***Published by and for the Benefit of
Friends of the Minnesota Valley
P.O. Box 20697
Bloomington, MN 55420***

MECC-LCCMR PH 5 (Sup) FMV
Mn Valley NWR - Upgrala Work Area Aug 2011 -- Non-LCCMR Funded
Mechanical & Chemical Treatment of Woody Invasive Species

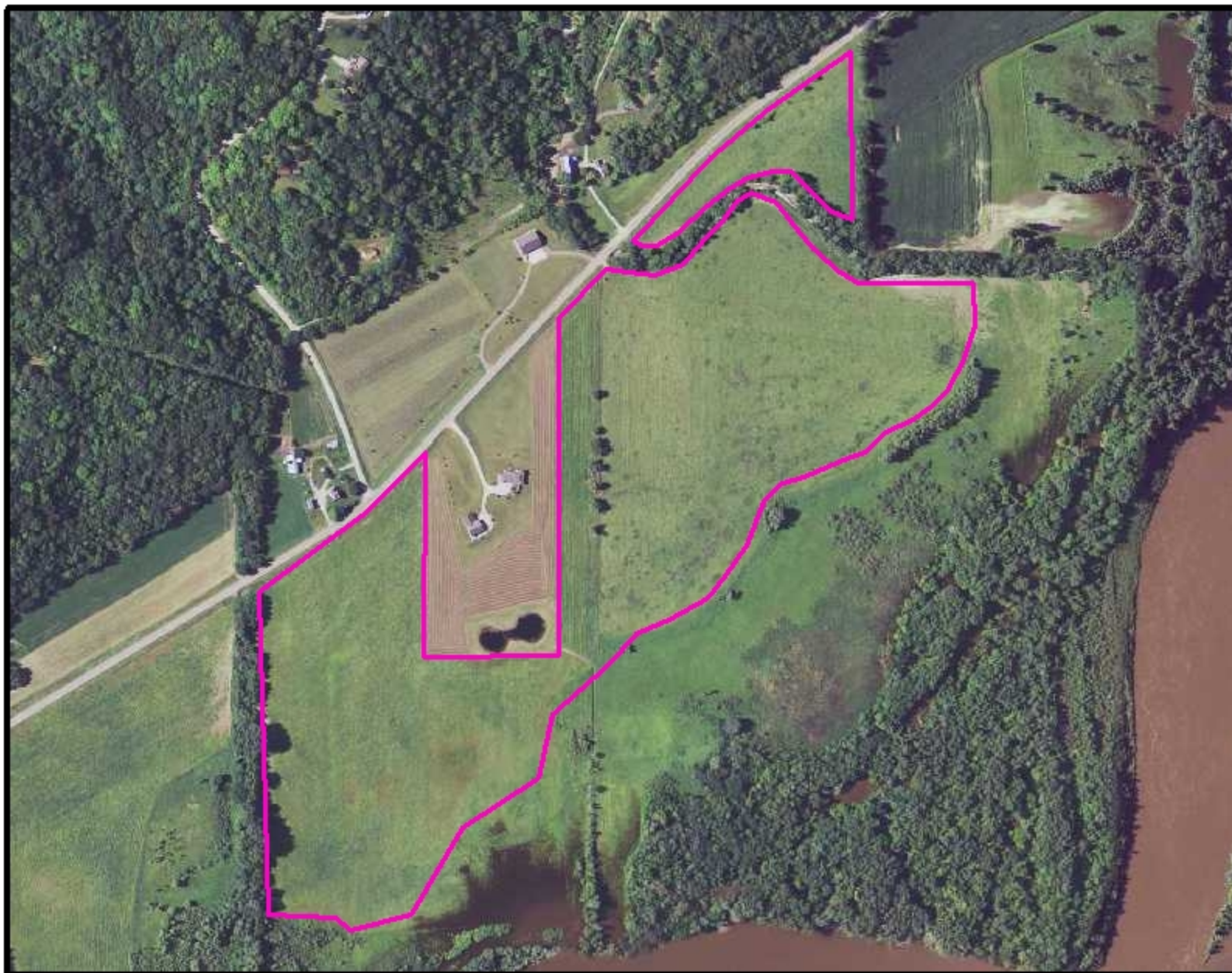


0 0.01250.025 0.05 Miles
|-----|-----|-----|-----|-----|

G. Shimek USFWS MNV 7/25/12

MECC-LCCMR PH 5 (Sup) FMV

Mn Valley NWR - Jessenland Work Area June 2012 -- LCCMR Funded Mechanical & Chemical Treatment of Woody Invasive Species



0 0.035 0.07 0.14 Miles

G. Shimek USFWS MNV 7/25/12

MECC-LCCMR PH 5 (Sup) FMV

Mn Valley NWR - St. Lawrence Work Area June 2012 -- LCCMR Funded Mechanical & Chemical Treatment of Woody Invasive Species

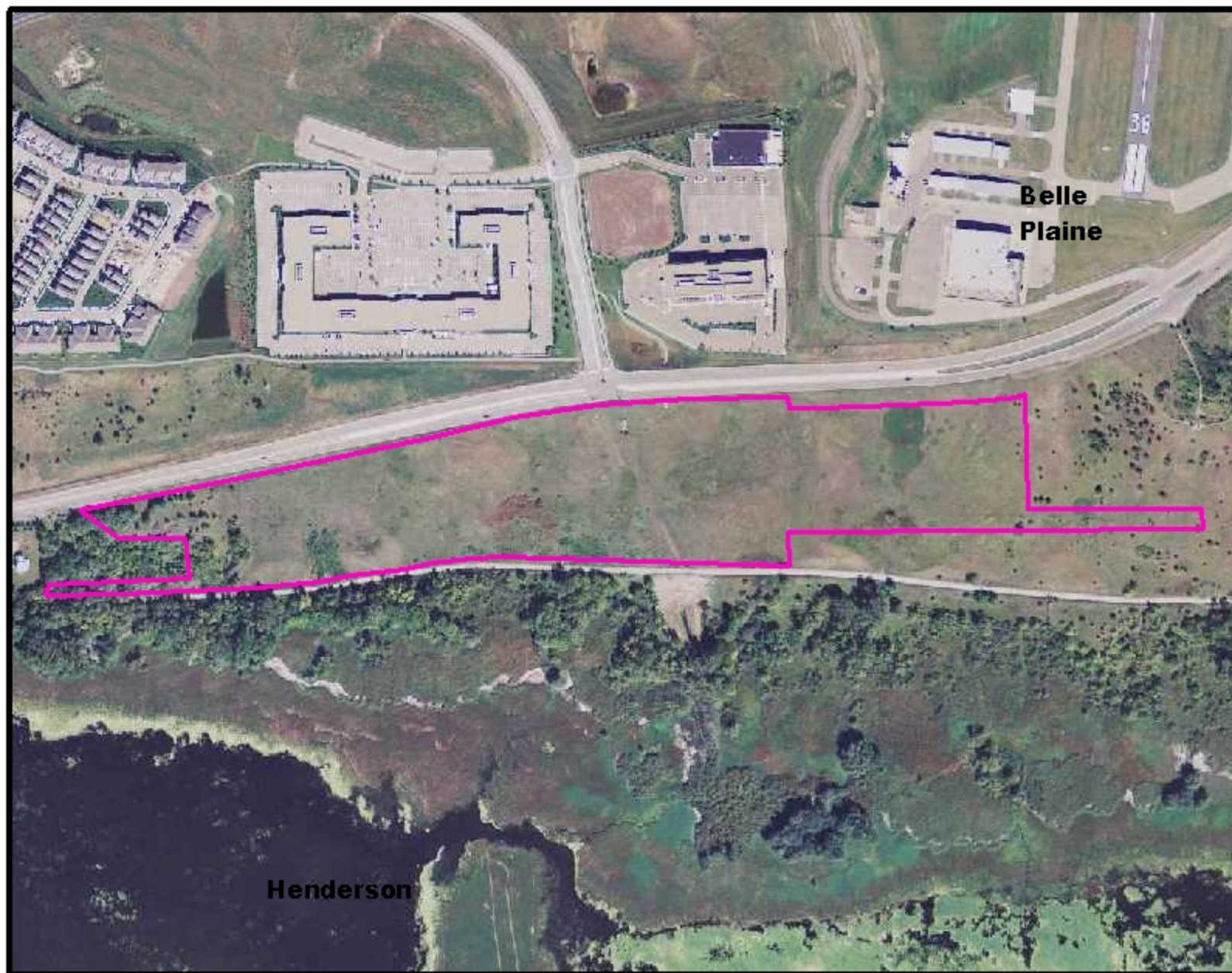


0 0.03 0.06 0.12 Miles

G. Shimek USFWS MNV 7/25/12

MECC-LCCMR PH 5 (Sup) FMV

Mn Valley NWR - Upgrala Work Area June 2012 -- LCCMR Funded Mechanical & Chemical Treatment of Woody Invasive Species



0 0.03 0.06 0.12 Miles

G. Shimek USFWS MNV 7/25/12

MECC-LCCMR PH 5 (Sup) FMV
Mn Valley NWR - Rapids Lake Work Area Nov 2012 -- Non-LCCMR Funded
Mechanical & Chemical Treatment of Woody Invasive Species



0 0.0125 0.025 0.05 Miles

G. Shimek USFWS MNV 7/25/12



08/14/2012

2010 Project Abstract

For the Period Ending June 30, 2012

PROJECT TITLE: Metro Conservation Corridors (MeCC) Phase V- Supplemental The Trust for Public Land's Critical Lands Protection Program [M.L. 2010]

PROJECT MANAGER: Becca Nash

AFFILIATION: The Trust for Public Land

MAILING ADDRESS: 2610 University Ave West, Suite 300

CITY/STATE/ZIP: St. Paul, MN 55114

PHONE: 651-999-5325

E-MAIL: Becca.Nash@tpl.org

WEBSITE: www.tpl.org

FUNDING SOURCE: Environment and Natural Resources Trust Fund

LEGAL CITATION: M.L. 2010, Chap. 362, Sec. 2, Subd. 4(g)

APPROPRIATION AMOUNT: \$890,000

Overall Project Outcome and Results

In its Critical Lands Protection Program, The Trust for Public Land (TPL) used **\$890,000 from the Environment and Natural Resources Trust Fund (ENRTF)** to secure fee title on portions totaling **50.2 acres** of 407 total acquired acres. TPL conveyed these lands to public agencies for permanent protection. Individual project successes include the following:

- TPL spent \$552,000 2010 ENRTF funds to protect 10.8 ENRTF acres of land as part of a larger 69-acre purchase of a high biodiversity corridor including forest, bluffland, wetland and rare calcareous fen. TPL conveyed the land to the Department of Natural Resources as the **Savage Fen SNA on the Credit River** addition in Scott County.
- TPL spent \$338,000 2010 ENRTF to protect 39.4 ENRTF acres of land as part of a 338-acre acquisition of one of the largest undeveloped and contiguous tracts of open space in the Twin Cities Metro Area. TPL then conveyed the land to Anoka County. Located at the confluence of Cedar Creek and the Rum River, this land will be managed by the County as the **Cedar Creek Conservation Area**.

TPL leveraged **\$890,000** in TPL Metro Conservation Corridors (MeCC) 2010 funding on these projects with **\$1,090,000** in non-state funds to protect 357 additional pro-rated acres of land. \$300,000 of this was non-state public funds and \$790,000 of this was from private land value donations. Additionally, \$300,000 in state RIM funds were used to protect 5.9 pro-rated acres and \$3,400,000 in Outdoor Heritage Funds were used to protect 250.8 pro-rated acres. TPL's 2009 ENRTF funds in the amount of \$62,000 and DNR's 2009 and 2010 ENRTF funds in the amount of \$358,493 were used to protect 7.2 pro-rated acres and 7.1 pre-rated acres respectively. SNA 2006 bonding dollars in the amount of 289,507 were also used to protect 5.7 pro-rated acres. All acres acquired total 407.

*Please note, since a portion of TPL's 2009 ENRTF funding was used for the Cedar Creek Conservation Area project, a portion of these results was also reflected in TPL's 2009 MeCC Work Program update and Final Report.

Project Results Use and Dissemination

As conservation transactions were completed, The Trust for Public Land disseminated information on the TPL website, www.tpl.org, broadcast emails to Embrace Open Space (EOS) and TPL list serve members, distributed press releases, and included information in TPL's newsletters as appropriate. TPL also worked with the long-term stewards to ensure information was distributed to their listserves and posted on their websites as well.

**Trust Fund 2009 Final Report (approved 12-03-10)
and
Trust Fund 2010 Final Report**

Date of Report: February 1, 2011
Final Report

	M.L. 2009	M.L. 2010
Date of Work Program		
Approval:	June 16, 2009	June 2, 2010
Project Completion Date:	June 30, 2011	June 30, 2012

I. PROJECT TITLE: Metro Conservation Corridors (MeCC) Phase V—The Trust for Public Land’s Critical Lands Protection Program [M.L. 2009]

Metro Conservation Corridors (MeCC) Phase V Supplemental –
The The Trust for Public Land’s Critical Lands Protection Program
(3.1) [M.L. 2010]

Project Manager: Becca Nash
Affiliation: The Trust for Public Land
Mailing Address: 2610 University Avenue, Suite 300
City / State / Zip: St. Paul, MN 55114
Telephone Number: 651-999-5325
E-mail Address: Becca.nash@tpl.org
FAX Number: 651-917-2248
Web Site Address: www.tpl.org/minnesota

Location: Within mapped Metro Conservation Corridors in the counties of Anoka, Carver, Chisago, Dakota, Goodhue, Hennepin, Isanti, LeSueur, Nicollet, Ramsey, Rice, Scott, Sherburne, Sibley, Washington and Wright (please see Metro Conservation Corridors map)

Total Trust Fund Project Budget:	M.L. 2009	M.L. 2010	Total
Trust Fund Appropriation	\$380,000	\$890,000	\$1,270,000
Minus Amount Spent:	\$380,000	\$890,000	\$1,270,000
Equal Balance:	\$0	\$0	\$0

Legal Citation:
M.L. 2009, Chap. 143, Sec. 2, Subd. 4(f)
Appropriation Language:

\$3,375,000 is from the trust fund to the commissioner of natural resources for the fifth appropriation for acceleration of agency programs and cooperative agreements. Of this appropriation, \$2,185,000 is for Department of Natural Resources agency programs and \$1,190,000 is for agreements as follows: \$380,000 with the Trust for Public Land; \$90,000 with Friends of the Mississippi River; \$155,000 with Great River Greening; \$250,000 with Minnesota Land Trust; \$225,000 with Minnesota Valley National Wildlife Refuge Trust, Inc.; and \$90,000 with Friends of the Minnesota Valley for the purposes of planning, restoring, and protecting important natural areas in the metropolitan area, as defined under Minnesota Statutes, section 473.121, subdivision 2, and portions of the surrounding counties, through grants, contracted services, technical assistance, conservation easements, and fee title acquisition. Land acquired with this appropriation must be sufficiently improved to meet at

least minimum management standards as determined by the commissioner of natural resources. Expenditures are limited to the identified project corridor areas as defined in the work program. This appropriation may not be used for the purchase of residential structures, unless expressly approved in the work program. All conservation easements must be perpetual and have a natural resource management plan. Any land acquired in fee title by the commissioner of natural resources with money from this appropriation must be designated as an outdoor recreation unit under Minnesota Statutes, section 86A.07. The commissioner may similarly designate any lands acquired in less than fee title. A list of proposed restorations and fee title and easement acquisitions must be provided as part of the required work program. All funding for conservation easements must include a long-term stewardship plan and funding for monitoring and enforcing the agreement. To the maximum extent practical, consistent with contractual easement or fee acquisition obligations, the recipients shall utilize staff resources to identify future projects and shall maximize the implementation of biodiverse, quality restoration projects in the project proposal into the first half of the 2010 fiscal year.

M.L. 2010, Chap. 362, Sec. 2, Subd. 4(g)

Appropriation Language:

\$1,750,000 is added to Laws 2009, chapter 143, section 2, subdivision 4, paragraph (f), from the trust fund to the commissioner of natural resources for acceleration of agency programs and cooperative agreements. Of this appropriation, \$1,750,000 is for agreements as follows: \$890,000 with the Trust for Public Land; \$485,000 with Minnesota Land Trust; \$325,000 with Minnesota Valley National Wildlife Refuge Trust, Inc.; and \$50,000 with Friends of the Minnesota Valley for planning, restoring, and protecting important natural areas in the metropolitan area, as defined under Minnesota Statutes, section 473.121, subdivision 2, and portions of the surrounding counties, through grants, contracted services, technical assistance, conservation easements, and fee title acquisition. Land acquired with this appropriation must be sufficiently improved to meet at least minimum management standards as determined by the commissioner of natural resources. Expenditures are limited to the identified project corridor areas as defined in the work program. This appropriation may not be used for the purchase of residential structures, unless expressly approved in the work program. All conservation easements must be perpetual and have a natural resource management plan. Any land acquired in fee title by the commissioner of natural resources with money from this appropriation must be designated as an outdoor recreation unit under Minnesota Statutes, section 86A.07. The commissioner may similarly designate any lands acquired in less than fee title. A list of proposed restorations and fee title and easement acquisitions must be provided as part of the required work program. All funding for conservation easements must include a long-term stewardship plan and funding for monitoring and enforcing the agreement.

II. PROJECT SUMMARY AND RESULTS:

M.L.2009 Final Project Summary:

In its Critical Lands Protection Program, The Trust for Public Land (TPL) used **\$380,000 ENRTF funds** to secure fee title on **21.63 ENRTF acres** of 402 total acquired acres. TPL conveyed these lands to public agencies for permanent protection. Individual project successes include the following:

- TPL spent \$318,000 2009 ENRTF funds to protect 14.43 ENRTF acres of land as part of a larger 64-acre purchase of shoreline designated by the Minnesota Department of Natural Resources as a “regionally significant ecological area.” TPL conveyed the land to the City of Lindstrom to create the **Allemansratt Wilderness Park**.
- TPL spent \$62,000 2009 ENRTF to protect 7.2 ENRTF acres of land as part of a 338-acre acquisition of one of the largest undeveloped and contiguous tracts of open space in the Twin Cities Metro Area. TPL then conveyed the land to Anoka County. Located at the confluence of Cedar Creek and the Rum River, this land will be managed by the County as the **Cedar Creek Conservation Area**.

TPL leveraged **\$380,000** in TPL Metro Conservation Corridors (MeCC) 2009 funding on these projects with **\$992,000** in non-state funds to protect 87.79 additional pro-rated acres of land. \$652,000 of this was non-state public funds and \$339,500 of this was from private land value donations. Additionally, \$500,000 in state remediation grant funds were used to protect 22.7 pro-rated acres and \$1,900,000 in Outdoor Heritage Funds were used to protect 221.4 pro-rated acres. TPL’s 2010 ENRTF funds in the amount of \$338,000 and DNR’s 2008 ENRTF funds in the amount of \$200,000 were used to protect 39.4 pro-rated acres and 9.08 pre-rated acres respectively. All acres acquired total 402.

*Please note, since a portion of TPL’s 2010 ENRTF funding was used for the Cedar Creek Conservation Area project, a portion of these results will also be reflected in TPL’s 2010 MeCC Work Program update and Final Report.

Project Results Use and Dissemination

As conservation transactions were completed, The Trust for Public Land disseminated information on the TPL website, www.tpl.org, broadcast emails to Embrace Open Space (EOS) and TPL list serve members, distributed press releases, and included information in TPL’s newsletters as appropriate. TPL also worked with the long-term stewards to ensure information was distributed to their listserves and posted on their websites as well.

M.L. 2010 Final Project Summary

In its Critical Lands Protection Program, The Trust for Public Land (TPL) used **\$890,000 from the Environment and Natural Resources Trust Fund (ENRTF)** to secure fee title on portions totaling **50.2 acres** of 407 total acquired acres. TPL conveyed these lands to public agencies for permanent protection. Individual project successes include the following:

- TPL spent \$552,000 2010 ENRTF funds to protect 10.8 ENRTF acres of land as part of a larger 69-acre purchase of a high biodiversity corridor including forest, bluffland, wetland and rare calcareous fen. TPL conveyed the land to the Department of Natural Resources as the **Savage Fen SNA on the Credit River** addition in Scott County.
- TPL spent \$338,000 2010 ENRTF to protect 39.4 ENRTF acres of land as part of a 338-acre acquisition of one of the largest undeveloped and contiguous tracts of open space in the Twin Cities Metro Area. TPL then conveyed the land to Anoka County. Located at the confluence of Cedar Creek and the Rum River, this land will be managed by the County as the **Cedar Creek Conservation Area**.

TPL leveraged **\$890,000** in TPL Metro Conservation Corridors (MeCC) 2010 funding on these projects with **\$1,090,000** in non-state funds to protect 357 additional pro-rated acres of land. \$300,000 of this was non-state public funds and \$790,000 of this was from private

land value donations. Additionally, \$300,000 in state RIM funds were used to protect 5.9 pro-rated acres and \$3,400,000 in Outdoor Heritage Funds were used to protect 250.8 pro-rated acres. TPL's 2009 ENRTF funds in the amount of \$62,000 and DNR's 2009 and 2010 ENRTF funds in the amount of \$358,493 were used to protect 7.2 pro-rated acres and 7.1 pre-rated acres respectively. SNA 2006 bonding dollars in the amount of 289,507 were also used to protect 5.7 pro-rated acres. All acres acquired total 407.

*Please note, since a portion of TPL's 2009 ENRTF funding was used for the Cedar Creek Conservation Area project, a portion of these results was also reflected in TPL's 2009 MeCC Work Program update and Final Report.

IV. OUTLINE OF PROJECT RESULTS:

Result/Activity 1: Acquire Significant Habitat

Description: TPL worked in many communities within defined regionally significant Metro Conservation Corridors, with a priority on high quality natural resources or conservation lands that provide natural buffers to water resources, including shorelands and wetlands. Many of these areas include lakes that appear on the DNR's 2007 map of "Shallow Lakes in Minnesota" (50 acres or greater, maximum depth of 15 feet). Following is a list of projects and project areas in which TPL focused its efforts.

- 1) In southern Chisago County, TPL worked with the City of Lindstrom and multiple landowners to protect lakeshore and high quality forested lands designated by the DNR as "regionally significant ecological areas." The land is now owned by the City of Lindstrom and will be managed as a natural resource based park. COMPLETED with M.L. 2009 ENRTF funds.
- 2) In northern Scott County, TPL worked with a landowner, local partners including the City of Savage & Scott County, and the DNR's SNA Program to protect a number of parcels of land containing fen, wetlands, associated upland forest & bluffland, and stream frontage on a Minnesota River tributary. The total estimate of acres protected as an SNA was 29. COMPLETED with M.L. 2010 ENRTF dollars.
- 3) In west-central Anoka County, TPL worked with landowners and a local public agency partner to protect a large patch of regionally significant ecological lands including rivers shoreline, wetlands and forests and prairie habitat. Approximately 570 total acres were protected; Anoka County now owns and manages the property as a natural area. COMPLETED with M.L. 2009 and M.L. 2010 ENRTF funds.

In completing its work under this appropriation, TPL worked with the long-term steward of land acquired with this appropriation to ensure a restoration and management plan is developed and that funding is identified for long-term stewardship. TPL will also provide documentation of transaction-related costs and will seek Commissioner approval before acquiring an interest of land to be conveyed to the DNR, as required.

Summary Budget Information for Result/Activity 1:

	M.L. 2009	M.L. 2010	Total
Trust Fund Budget:	\$380,000	\$890,000	\$1,270,000
Amount Spent:	\$ 380,000	\$890,000	\$1,270,000
Balance:	\$ 0	\$0	\$0

Deliverable/Outcome	Completion Date	Budget
1. M.L. 2009: Approx. twenty-two (22) acres of high quality habitat protected (vs. 17 anticipated)	June 30, 2011	\$380,000
2. M.L. 2010: Approx. fifty (50) acres of high quality habitat protected (vs. 33 anticipated)	June 30, 2012	\$890,000

Result Completion Date: M.L. 2009: June 30, 2011; M.L. 2010: June 30, 2012

M.L. 2009 Final Report Summary:

Allemansratt Nature Reserve

The Trust for Public Land closed on the acquisition of the 64-acre Lindstrom Phase I property on March 31, 2010. TPL immediately conveyed the property to the City of Lindstrom, which will manage the property as the Allemansratt Nature Reserve.

Purchase of this land allows it to be protected in nearly the same condition as that which originally attracted Swedish emigrants to Chisago County in the 1850's. The site, which includes high quality forest designated by the DNR as a "regionally significant ecological area," provides wildlife habitat, water quality benefits, and public access in a high – growth area. The land abuts two popular fishing lakes with approximately a mile of shoreline. Ecological features include glacial eskers, high quality oak forest, eighteen wetlands (two ephemeral), and diverse wildlife, including many species- such as the Forster's tern- that are listed as being in greatest conservation need. The property has a greater impact on wildlife and connectivity because it is adjacent to 19 acres of land already protected by the City. The comprehensive plans of both the City and Chisago County identify this land as a unique resource to be protected.

TPL purchased the property for \$1,370,500 and sold the property to Lindstrom for \$1,053,500 (TPL's purchase price minus TPL's \$318,000 ENRTF contribution). In purchasing the property from TPL, the City of Lindstrom used \$500,000 from the State's Remediation Fund Grant Program; \$200,000 from Metro Greenways Grant Program (ENRTF 2008); and \$352,500 in City funds. The appraised fair market value of the property was \$1,410,000. The \$39,500 discount to fair market value that TPL was able to secure was passed along as a land value donation by TPL to the City of Lindstrom.

The total ENRTF funding used on this protection project was \$518,000 (please see chart below for a complete breakdown of project funding).

Allemansratt Nature Preserve Acquisition, Lindstrom, MN				
Funding Source*	Partner on Allemansratt project	Amount of funding for land acquisition costs	Allocated Acreage	Recipient of Grant Funds (if applicable)
State Funds				

State Remediation Grant Funds	DNR	\$500,000	22.70	City of Lindstrom
ENTF - Metro Greenways 2008 (DNR)	DNR	\$200,000	9.08	City of Lindstrom
ENTF - Metro Wildlife Corridors Phase IV 2009 (TPL)	TPL	\$318,000	14.43	TPL
	Sub Total	\$1,018,000		
Local Government Funds				
City of Lindstrom	City of Lindstrom	\$352,500	16.00	City of Lindstrom
	Sub Total	\$352,500		
Private Funds				
TPL Land Value Donation	TPL	\$39,500	1.79	N/A
	Sub Total	\$39,500		
	TOTAL	\$1,410,000	64.00	
*Please note that total ENRTF funding is				
total other state funding is		\$518,000		
total non-state public funding is		\$500,000		
total private funding is		\$352,500		
TOTAL funding & appraised fair market value of property is		\$39,500		
		\$1,410,000		

Cedar Creek Conservation Area

On September 22, 2010, TPL closed on the acquisition of a 338-acre property at the confluence of the Rum River and Cedar Creek. TPL immediately conveyed the property to Anoka County, which will manage the land as Cedar Creek Conservation Area. This was the second phase of a two-phase acquisition project. The first phase of 212 acres closed on March 17, 2010 and did not involve any ENRTF funds.

This land has long been a conservation priority for Anoka County and many other organizations and individuals. On June 13, 2000, the Anoka County Board adopted the Cedar Creek Greenway Corridor Plan after a lengthy planning process involving the County, the Cities of Oak Grove and Andover, the Anoka Conservation District, the Rum River Watershed Management Organization, the DNR, the University of Minnesota, and a Citizens Advisory Committee. The study was funded in part by the DNR Metro Greenways program and recognized the creek as an outstanding natural resource and habitat corridor that should be protected.

The 550- acre property (Phase I and Phase II) at the confluence of the Rum River and Cedar Creek offers exceptional quality wildlife habitat and public recreational opportunities with a diversity of topography, aquatic systems, plant communities and wildlife. The rolling land has a rich mix of woodlands, wetlands, prairie remnants and fields. It contains 1.5 miles of shoreline on the Rum River, an outstanding fishery and a component of the state wild and scenic river system. It also contains ¾ of a mile of land along Cedar Creek in a recognized wildlife corridor. The acquisition not only conserves one of the largest

M.L. 2010 Final Report Summary:

Cedar Creek Conservation Area

TPL closed on the acquisition of Cedar Creek Conservation Area using \$338,000 of TPL's 2010 ENRTF funds as described above in the M.L. 2009 Final Report Summary.

Savage Fen SNA on the Credit River

TPL used \$552,000 in 2010 ENRTF to close on the acquisition of the Savage Fen--Credit River (SNA) property on November 23, 2010 and immediately conveyed the property to the Department of Natural Resources Scientific and Natural area as an addition to the Savage Fen SNA.

TPL became aware of the potential additions to Savage Fen SNA when the DNR called us for assistance in August 2008 after visiting these properties with landowner Karl Bohn. As discussed at that time, Mr. Bohn's extensive landholdings included several areas of high and outstanding biodiversity significance and also areas that are critical to the protection of the hydrology of the Savage Fen Wetland Complex. TPL and DNR worked together since that time in order to identify the priority areas for protection; to get agreement on these priority areas with the landowner; and to clarify the partnership with the City of Savage and Scott County with regard to the use of an existing disturbed corridor through the property.

The result has been the protection of a portion of calcareous fen (one of Minnesota's most endangered plant communities and essential part of the entire Savage Fen Wetland Complex), seepage meadows, maple and basswood forested uplands, a quarter-mile of the Credit River, and significant habitat for a multitude of fish and wildlife species. Utilizing the area are at least 18 known Species in Greatest Conservation Need, including American white pelican, Bald Eagle, American Woodcock, Northern Rough-winged Swallow, House Wren, Brown Thrasher, Connecticut Warbler, Hooded Warbler, Gopher Snake, Sterile Sedge, Beaked Spike-rush, Hair-like Beak Rush, Whorled Nut-rush, Valerian, Small White Lady's Slipper, and Twig Rush. Blanding's Turtles and American Brook Lamprey are also known to inhabit this larger complex.

The site will be open to the public and along with a unique management relationship with the City of Savage and Scott County, the public will be able to access the site via a trail corridor and will be able to learn about the fen through educational signage and lookout areas. As part of the management approach to the fen, it will also be open to limited hunting opportunities.

The project enjoyed support from a number of citizens, public agencies, and conservation groups, including Great River Greening, a partner in MeCC which has pledged to hold restoration events on the site including on February 23, 2011.

A full breakdown of the project funding follows below.

Savage Fen SNA on the Credit River, Scott County, MN				
Funding Source*	Partner on project	Amount of funding for land acquisition costs	Allocated Acreage	Recipient of Grant Funds (if applicable)

Personnel: \$0

Contracts: \$0

Equipment/Tools/Supplies: \$0

Acquisition (Fee Title or Permanent Easements): \$890,000 (Capital costs for 50.2 pro-rated ENRTF acres of fee title acquisition; TPL transferred interests in land to one local unit of government and one state agency for long term protection).

Travel: \$0

Additional Budget Items: \$0

TOTAL ENRTF PROJECT BUDGET: \$890,000

Explanation of Capital Expenditures Greater Than \$3,500: N/A

VI. PROJECT STRATEGY:

A. Project Partners: TPL works closely with private landowners and with the public agency or non-profit partner to which TPL will transfer the land and which will serve as the long-term steward of the land interest that TPL purchases using ENRTF funds. Long-term stewards and other project partners may include local governments, regional agencies, state agencies, water-related agencies, federal agencies, and private nonprofit organizations. We also work closely with citizen groups and coordinate our work with other Metro Conservation Corridor partners (See Table A). When TPL transfers interests in land to a long-term steward, TPL will donate to the land steward the land value of the ENRTF funds.

B. Project Impact and Long-term Strategy: The Trust for Public Land is working toward a vision that in the next 25 years, every one of us—in particular every child—will have a nearby natural area, park, garden, or playground to visit. Our region's parks system will be expanded into an interconnected web of public parks, gardens, trails, lakes, rivers and natural areas in the Twin Cities area stretching from the vibrant central business districts of Minneapolis and St. Paul through our inner city neighborhoods to our growing suburban and exurban fringe. The Metro Conservation Corridors Program provides the opportunity to positively impact the quality of life of the estimated sixty percent of the state's population that lives in the counties served by this overall project. By focusing on protecting and restoring high quality natural areas that are close to home for millions of Minnesotans, this program will provide: recreation opportunities and physical health; economic well-being; and a healthy and working natural resource system that in turn will provide safe drinking water for people and healthy habitat for fish, birds and other wildlife—especially for Species of Greatest Conservation Need, as described in the report [Tomorrow's Habitat for the Wild and Rare](#).

C. Other Funds Proposed to be Spent during the Project Period: M.L. 2009: TPL leveraged 380,000 2009 ENRTF funds with \$3,930,000 in other state and non-state funds for this acquisition work. Additional acquisition funding was contributed by: the City of Lindstrom, Anoka County, state agencies, and landowners as outlined in detail above. M.L. 2010: TPL leverage \$890,000 ENRTF funds with \$1,090,000 in non-state funds for this acquisition work from private land value donations and Anoka County.

D. Spending History: Past allocations of ENRTF funding through the Metro Conservation Corridors Program have been spent to create and/or protect the following:

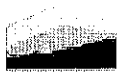
Land Protected	ENRTF Appropriation Year	ENRTF Amount Spent by TPL	ENRTF Amount Spent by Partners	Non-ENRTF Amount Leveraged
East Rush Lake AMA/WMA	2005	\$100,000	\$200,000	\$303,000
Horseshoe Lake Regional Park	2005	\$100,000	\$100,000	\$956,000
Franconia Bluffs SNA	2005	\$420,000	\$0	\$105,000
Franconia Bluffs SNA	2007	\$ 10,000	\$0	
Camp Ojiketa on Green Lake	2007	\$410,000	\$100,000	\$3,215,000
Camp Ojiketa on Green Lake	2008	\$475,000		
Total		\$1,515,000	\$400,000	\$4,579,000

VII. DISSEMINATION: As conservation transactions are completed, The Trust for Public Land will disseminate information on the TPL website, www.tpl.org, broadcast emails to Embrace Open Space (EOS) and TPL list serve members, distribute press releases, and include information in TPL's newsletters as appropriate. TPL will also work with the long-term steward to ensure information is distributed to its listserves and on its website as well.

VIII. REPORTING REQUIREMENTS: For the 2009 and 2010 appropriations, periodic work program progress reports will be submitted February 1st and August 1st of each year. A final work program report and associated products for the 2009 appropriation will be submitted not later than August 1, 2011. A final work program report and associated products for the 2010 appropriation will be submitted not later than August 1, 2012.

IX. RESEARCH PROJECTS: N/A

Attachment A: Budget Detail for 2010 Projects		2/1/2011			
Project Title: Metropolitan Area Conservation Corridors Phase 5 Supplemental-- The Trust for Public Land's Critical Lands Protection Program					
Project Manager Name: Becca Nash					
Trust Fund Appropriation: \$890,000					
2010 Trust Fund Budget	<u>Result 1 Budget:</u>	Amount Spent 2/1/10	Balance 2/1/11	TOTAL BUDGET	TOTAL BALANCE
	<i>Acquire Significant Habitat</i>				
BUDGET ITEM					
Land acquisition	890,000	890,000	0	890,000	0
COLUMN TOTAL	\$890,000	\$890,000	\$0	\$890,000	\$0



CONSERVING LAND for PEOPLE

Twin Cities Metro Area Tract Saved As Open Space

Contact: Bob McGillivray, The Trust for Public Land, 651-999-5307, [email](#)

ANOKA, MN, 9/22/2010: A 550-acre tract has been permanently protected for a new conservation area in northwest Anoka County, The Trust for Public Land and Anoka County officials announced today. Situated at the confluence of the Rum River and Cedar Creek, the property is one of the largest undeveloped tracts in one of the fastest growing parts of the Twin Cities metropolitan area. Anoka County will make the land available to Minnesotans for hunting, fishing, and wildlife observation.

"This new conservation area will be a legacy for generations to come, providing access to some of the most pristine and diverse wildlife lands in the entire metropolitan area," said Dennis Berg, chair, Anoka County Board of Commissioners.

The future Cedar Creek Conservation Area is situated across the Rum River from the existing 434-acre Rum River Central Regional Park and has 3/4 of a mile of shoreline on the river as well as 1.5 miles of shoreline on Cedar Creek. The river is an important fishery and a component of the Minnesota's Wild and Scenic River System.

The newly preserved land has woodlands, wetlands, and prairie, and Anoka County plans unpaved trails and a fishing dock and will restore nearly 200 acres of the property to its native prairie habitat. The conservation area will be open to the public following the restoration of prairie habitat and the development of parking areas and access trails.

County efforts to purchase the land from developers were accelerated a year ago, when The Trust for Public Land (TPL), a national conservation organization, was asked to negotiate with the landowners, a group of Twin Cities developers. TPL was able to reach a two-phase purchase agreement for the 550-acre property. The first phase, a purchase of 212 acres, was completed in March of this year. The remaining 338 acres were purchased today.

"We're glad we were able to find a way to bring everyone together to get this deal done," said Bob McGillivray, TPL senior project manager. "TPL's mission is to conserve natural areas like Cedar Creek for people to enjoy, and this is a terrific example of providing metropolitan residents with access to hunting and fishing close to home."

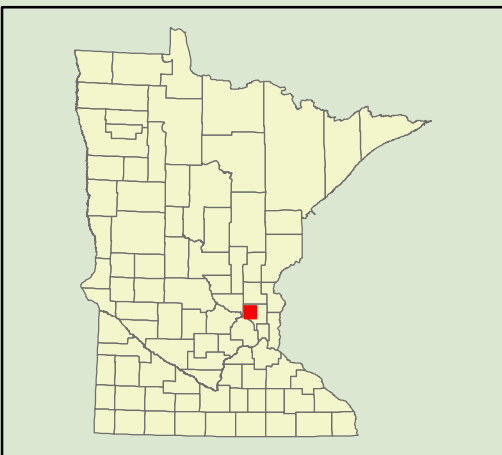
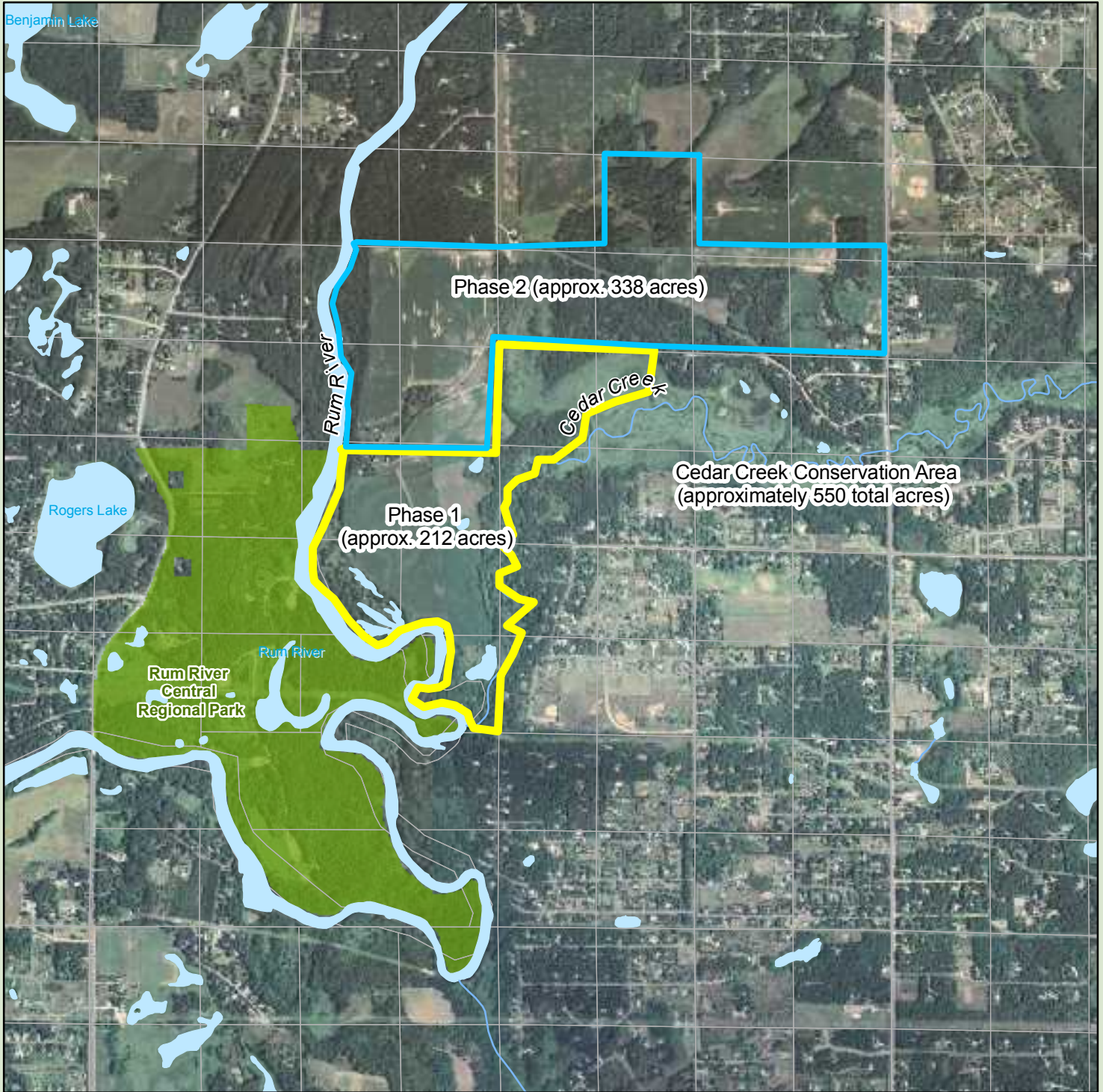
Anoka County will own and manage the land, and the \$4.5 million purchase was largely made with funding awarded by the Lessard-Sams Outdoor Heritage Council from the Outdoor Heritage Fund. This fund is part of the ballot measure approved by Minnesota voters in 2008 that dedicates 0.375 percent of state sales tax to preserve Minnesota's water, land, and arts heritage. Additional funding was provided by Anoka County and Minnesota's Environment and Natural Resources Trust Fund as recommended by the Legislative-Citizen Commission on Minnesota Resources.

"The purchase of the new conservation area was a model of cooperation," said John VonDeLinde, Anoka County Director of Parks and Recreation. "The State of Minnesota, The Trust for Public Land, cities of Oak Grove and Andover, the landowner, and Anoka County all worked very diligently to complete this significant conservation land purchase."

Anoka County is part of the seven-county Minneapolis-St. Paul metropolitan area and has a population of more than 330,000 people. The word 'Anoka' is derived from the native Dakota word anokatanhan meaning "on both sides" referring to the Rum River which flows through the heart of the county. Anoka County owns and operates a park and open space system of more than 10,000 acres.

The Trust for Public Land, established in 1972, specializes in conservation real estate, applying its expertise in negotiations, public finance, and law to protect land for people to enjoy as parks, greenways, community gardens, urban playgrounds, and wilderness. Since 1986, TPL has helped protect more than 87,000 acres of some of Minnesota's most special land and water resources. TPL depends on the support of individuals, corporations, and foundations.

Please save paper. Think before you print. © 2011 The Trust for Public Land. [All Rights Reserved.](#) [Privacy Policy.](#)

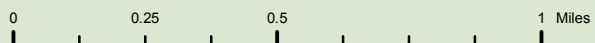


Cedar Creek Conservation Area Phase 1 and Phase 2 Acquisitions

TPL, The Trust for Public Land, and The Trust for Public Land logo are trademarks of The Trust for Public Land.
Copyright © 2007 The Trust for Public Land.
www.tpl.org

Map created by The Trust for Public Land
on 11/5/2010

Information on this map is provided for purposes
of discussion and visualization only.



FOR IMMEDIATE RELEASE

December 1, 2010

CONTACT:

Becca Nash, The Trust for Public Land, 651-999-5325, Becca.Nash@tpl.org
Peggy Booth, Minnesota Department of Natural Resources, 651-259-5088,
Peggy.Booth@state.mn.us

Lifelong Savage Resident Conserves Family Land for Savage Fen SNA

Karl Bohn donates portion of land to help Trust for Public Land, State purchase, protect highly-prized habitat

SAVAGE, MINN., December 1, 2010: Life-long Savage resident Karl Bohn has sold his nearly 69-acre property, which is a key part of high biodiversity area, as a permanently protected addition to the Savage Fen Scientific and Natural Area in Scott County, The Trust for Public Land and Minnesota Department of Natural Resources announced today.

Development in Scott County—once the fastest growing county in Minnesota—has slowed recently with the downturn economy. Instead of developing the property, local resident, farmer and former City of Savage parks commissioner Karl Bohn sought a conservation outcome for his 68.4 acres adjacent to Savage Fen Scientific and Natural Area (SNA). The Minnesota office of The Trust for Public Land (TPL), a national conservation organization, secured an option to purchase the property in 2009 and has purchased and conveyed the land to the Minnesota Department of Natural Resources (DNR) as an addition to the SNA. Bohn donated land valued at \$490,000 to help make the conservation sale happen.

“The Trust for Public Land is very appreciative that Mr. Bohn chose to leave this conservation legacy for Minnesota,” said Becca Nash, TPL project manager. “We are also thankful for the partnership with the City of Savage, Scott County, our generous funders, and the Scientific and Natural Area Program in protecting this unique property for fish and wildlife habitat, clean water, and public enjoyment.”

Situated a half-hour southwest of the Twin Cities, Savage Fen SNA is a 42.5-acre ecological treasury of wetlands and forest. The newly acquired property includes a small portion of calcareous fen – one of Minnesota's most endangered plant communities, seepage meadows, maple and basswood forested uplands, a quarter-mile of the Credit River, and significant habitat for a multitude of fish and wildlife species. An existing, disturbed transportation corridor on the property offers the City of Savage and Scott County a unique opportunity to fashion a regional trail through the new portion of the Savage Fen SNA to connect the public to other nearby open spaces and the Minnesota Valley State Trail. The potential for a permanent trail was important to Bohn.

“I had this vision as a park commissioner to have a trail system run along the Credit River and Eagle Creek,” said Karl Bohn. “Now it’s really going to happen. And the fen is protected for the wildlife and for people to enjoy as well. I’m so pleased.”

This larger Savage Fen complex supports 18 known Species in Greatest Conservation Need, including American white pelican, Bald Eagle, American Woodcock, Northern Rough-winged Swallow, House Wren, Brown Thrasher, Connecticut Warbler, Hooded Warbler, Gopher Snake, Sterile Sedge, Beaked Spike-rush, Hair-like Beak Rush, Whorled Nut-rush, Valerian, Small

White Lady's Slipper, and Twig Rush. Blanding's Turtles and American Brook Lamprey are also known to inhabit this larger complex.

"The state of Minnesota is so grateful to Mr. Bohn for his donation and to The Trust for Public Land for making possible protection of this important natural area as a treasure for present and future generations to enjoy," said Peggy Booth, Scientific and Natural Area Supervisor. "Everyone can learn so much about how natural systems work at rare places like Savage Fen Scientific and Natural Area"

Exactly half of the \$3 million purchase was made with a grant from the Outdoor Heritage Fund as recommended by the Lessard-Sams Outdoor Heritage Council. This fund was created following the 2008 voter-approved "Legacy Amendment" that dedicates 0.375 percent of state sales tax to preserve Minnesota's water, land, and arts heritage. Additional funding included approximately \$910,000 from the Minnesota Environment and Natural Resources Trust Fund as recommended by the Legislative-Citizen Commission on Minnesota Resources, \$300,000 from Critical Habitat license plate funds through the Reinvestment in Minnesota Match Program, and approximately \$290,000 from DNR bonding funds. Xcel Energy Corporate Citizenship Foundation and Waste Management Corporation were among the many generous donors supporting TPL in accomplishing this lasting conservation outcome.

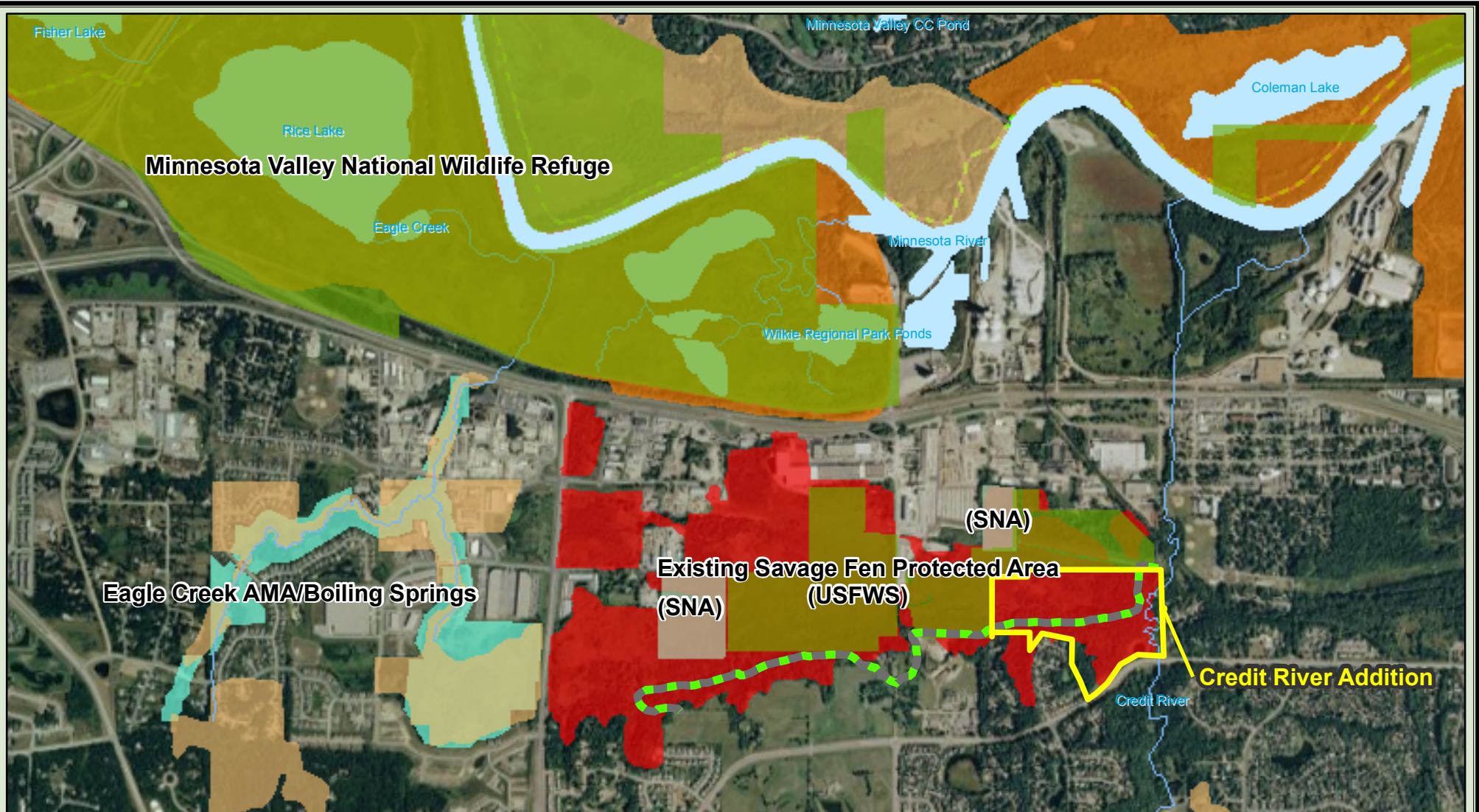
This conservation project was also supported by Scott County Soil and Water Conservation District, Lower Minnesota Watershed District, the City of Savage, Scott County, The SNA Commissioner's Advisory Council, and Great River Greening.

The state and its partners will be managing the site to protect its biodiversity, particularly the rare calcareous fen community. Special hunts are proposed in the future as part of the site's overall management and public use.

The Trust for Public Land, established in 1972, specializes in conservation real estate, applying its expertise in negotiations, public finance, and law to protect land for people to enjoy as parks, greenways, community gardens, urban playgrounds, and wilderness. Since 1986, TPL has helped protect more than 87,000 acres of some of Minnesota's most special land and water resources. TPL depends on the support of individuals, corporations, and foundations. Visit TPL online: tpl.org/Minnesota.

Scientific and Natural Areas (SNAs) are established to protect and perpetuate in an undisturbed natural state, those lands and waters embracing natural features of exceptional scientific value. SNAs contain rare species, native plant communities and geological features of statewide significance. The SNA system was initially authorized in 1969 with the first SNA unit acquired in 1974 to preserve a heron rookery. Since 1976, SNAs have been designated as part of the state's outdoor recreation system to both protect these rare features and provide for research, education, and public use.

###

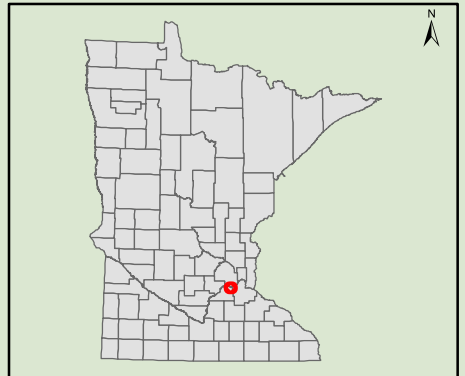
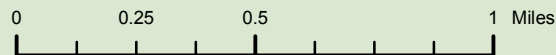


Legend

- Bohn Trail Route
- Metro_Parks
- Minnesota Valley State Trail
- MN Sites of Biodiversity Significance**
- Outstanding
- High
- Moderate
- Below
- Scientific and Natural Areas
- Nat'l Wildlife Refuge USFWS

**SAVAGE FEN SCIENTIFIC AND NATURAL AREA
CREDIT RIVER ADDITION**

APPROXIMATE BOUNDARIES



Information on this map is provided for purposes of discussion and visualization only. Map created by The Trust for Public Land on 03 / 23 / 2010

2010 Project Abstract

For the Period Ending June 30, 2012

PROJECT TITLE: Metro Conservation Corridors – Phase V Supplemental
Protecting Significant Habitat by Acquiring Conservation Easements - 3.2

PROJECT MANAGER: Sarah Strommen

AFFILIATION: Minnesota Land Trust

MAILING ADDRESS: 2356 University Avenue West, Suite 240

CITY/STATE/ZIP: St. Paul, MN 55114

PHONE: 651-647-9590

E-MAIL: sstrommen@mnland.org

WEBSITE: [If applicable] www.mnland.org

FUNDING SOURCE: Environment and Natural Resources Trust Fund

LEGAL CITATION: M.L. 2010, Chapter 362, Section 2, Subdivision 4(g)

APPROPRIATION AMOUNT: \$485,000

Overall Project Outcome and Results

This 2010 grant was supplemental to the fifth phase (2009) of the Metro Conservation Corridors project. This grant provided acquisition capital needed to complete urgent projects that otherwise we would not have been able to complete. Two perpetual conservation easements were completed that collectively protect 374 acres of land and more than 700 feet of shoreline. One easement was purchased at a bargain price, and one easement was donated. The Land Trust also purchased two additional easements that used both 2009 and 2010 ENRTF funding. Because we reported those projects accomplishments as part of our 2009 report, we described them but did not count acreage in the 2010 reports to avoid double-counting. All projects represent unique opportunities to protect high quality natural habitat, riparian areas, and to build upon prior land protection work by the Land Trust at several priority sites.

Additionally, the Land Trust prepared baseline property reports for each easement, detailing the condition of the property for future monitoring and enforcement. To fund this required perpetual obligation, the Land Trust dedicated ENRTF and other funds to its segregated Stewardship and Enforcement Fund for all completed projects. We estimated the anticipated annual expenses of each project and the investment needed to generate annual income sufficient to cover these expenses in perpetuity – all in accordance with our internal policies and procedures as approved by LCCMR. We will report to LCCMR annually on the status of the Stewardship and Enforcement Fund and the easements acquired with funds from this grant.

The total value for the two easements acquired is \$1,242,000. The donated value is \$1,162,000. Therefore, we were able to leverage significant private donation with the State's investment in these projects.

Cumulatively, across all phases of the Metro Corridors program, the Land Trust has protected 3,672 acres of critical habitat and more than 76,000 feet of shoreline, at a cost to the State of \$580 per acre.

The Land Trust's work on this project continues to demonstrate the cost effectiveness of working with conservation easements to protect natural and scenic resources within developed and developing areas, as the cost to the State was well below the cost to purchase land in the Twin Cities region. This grant continued to generate interest among landowners, and therefore, ongoing funding will be important to sustained success. Additionally, we believe that funds to purchase easements – even a small amount – will be necessary in the future as work becomes more targeted, selective, and focused on building complexes of protected land.

Project Results Use and Dissemination

The Land Trust disseminated information about the specific land protection projects completed under this grant through our newsletter, email updates, web site, and press releases. The Land Trust also shared information about conservation easements generally and our experience with our partner organizations, other easement holders, local communities, as well as policy makers including members of the LCCMR and LSOHC.

Environment and Natural Resources Trust Fund 2010 Work Program Final Report

Date of Report: August 1, 2012

ENRTF 2010 Final Report

Date of Work program Approval: June 9, 2010

Project Completion Date: June 30, 2012

I. PROJECT TITLE: Metro Conservation Corridors – Phase V Supplemental Protect Significant Habitat by Acquiring Conservation Easements

Project Manager: Sarah Strommen, Conservation Director, Central Region

Affiliation: Minnesota Land Trust

Mailing Address: 2356 University Avenue West, Suite 240

City / State / Zip : St. Paul, MN 55114

Telephone Number: 651-647-9590

E-mail Address: sstrommen@mnland.org

FAX Number: 651-647-9769

Web Page address: www.mnland.org

Location: Within mapped corridors (see map included with overall work program) in the counties of Anoka, Carver, Chisago, Dakota, Goodhue, Hennepin, Isanti, LeSueur, Nicollet, Ramsey, Rice, Scott, Sherburne, Sibley, Washington and Wright.

Total Trust Fund Project Budget:	M.L. 2010
Trust Fund Appropriation:	\$485,000
Minus Amount Spent:	\$415,220
Equal Balance:	\$69,780

Legal Citation: M.L. 2010, Chapter 362, Section 2, Subdivision 4(g)

Appropriation Language:

\$1,750,000 is added to Laws 2009, chapter 143, section 2, subdivision 4, paragraph (f), from the trust fund to the commissioner of natural resources for acceleration of agency programs and cooperative agreements. Of this appropriation, \$1,750,000 is for agreements as follows: \$890,000 with the Trust for Public Land; \$485,000 with Minnesota Land Trust; \$325,000 with Minnesota Valley National Wildlife Refuge Trust, Inc.; and \$50,000 with Friends of the Minnesota Valley for planning, restoring, and protecting important natural areas in the metropolitan area, as defined under Minnesota Statutes, section 473.121, subdivision 2, and portions of the surrounding counties, through grants, contracted services, technical assistance, conservation easements, and fee title acquisition. Land acquired with this appropriation must be sufficiently improved to meet at least minimum management

standards as determined by the commissioner of natural resources. Expenditures are limited to the identified project corridor areas as defined in the work program. This appropriation may not be used for the purchase of residential structures, unless expressly approved in the work program. All conservation easements must be perpetual and have a natural resource management plan. Any land acquired in fee title by the commissioner of natural resources with money from this appropriation must be designated as an outdoor recreation unit under Minnesota Statutes, section 86A.07. The commissioner may similarly designate any lands acquired in less than fee title. A list of proposed restorations and fee title and easement acquisitions must be provided as part of the required work program. All funding for conservation easements must include a long-term stewardship plan and funding for monitoring and enforcing the agreement.

II. and III. FINAL PROJECT SUMMARY:

This 2010 grant was supplemental to the fifth phase (2009) of the Metro Conservation Corridors project. This grant provided acquisition capital needed to complete urgent projects that otherwise we would not have been able to complete. Two perpetual conservation easements were completed that collectively protect 374 acres of land and more than 700 feet of shoreline. One easement was purchased at a bargain price, and one easement was donated. The Land Trust also purchased two additional easements that used both 2009 and 2010 ENRTF funding. Because we reported those projects accomplishments as part of our 2009 report, we described them but did not count acreage in the 2010 reports to avoid double-counting. All projects represent unique opportunities to protect high quality natural habitat, riparian areas, and to build upon prior land protection work by the Land Trust at several priority sites.

Additionally, the Land Trust prepared baseline property reports for each easement, detailing the condition of the property for future monitoring and enforcement. To fund this required perpetual obligation, the Land Trust dedicated ENRTF and other funds to its segregated Stewardship and Enforcement Fund for all completed projects. We estimated the anticipated annual expenses of each project and the investment needed to generate annual income sufficient to cover these expenses in perpetuity – all in accordance with our internal policies and procedures as approved by LCCMR. We will report to LCCMR annually on the status of the Stewardship and Enforcement Fund and the easements acquired with funds from this grant.

The total value for the two easements acquired is \$1,242,000. The donated value is \$1,162,000. Therefore, we were able to leverage significant private donation with the State's investment in these projects.

Cumulatively, across all phases of the Metro Corridors program, the Land Trust has protected 3,672 acres of critical habitat and more than 76,000 feet of shoreline, at a cost to the State of \$580 per acre.

The Land Trust's work on this project continues to demonstrate the cost effectiveness of working with conservation easements to protect natural and scenic resources within developed and developing areas, as the cost to the State was well below the cost to purchase land in the Twin Cities region. This grant continued to generate interest among landowners, and therefore, ongoing funding will be important to sustained success. Additionally, we believe that funds to purchase easements – even a small amount – will be

necessary in the future as work becomes more targeted, selective, and focused on building complexes of protected land.

IV. OUTLINE OF PROJECT RESULTS:

Result 1: Protect Significant Habitat by Acquiring Conservation Easements

Description: For the 2009 phase of the Metro Conservation Corridors, the Minnesota Land Trust will protect critical habitat within the mapped corridors by identifying and contacting interested landowners, negotiating and completing 4-6 permanent conservation easements on up to 150 acres of land, and dedicating funds for the perpetual monitoring, management and enforcement of the easements.

The Land Trust will work in any of the mapped corridors and currently has numerous projects pending. Current potential projects are identified on the attached list and map. We will continually evaluate these projects and pursue those that protect the highest quality habitat, maximize public benefit, and would be most appropriate to complete each of the two phases of the grant. While some of these projects may not be completed at all, new projects will be added as landowners are identified.

The 2010 grant is supplemental to the 2009 grant. With this supplemental funding, the Land Trust will complete 1-2 urgent projects that require capital funding. The Minnesota Land Trust will protect up to 40-80 acres of high-quality forest and wetland habitats by securing permanent conservation easements and dedicating funds for the perpetual monitoring, management, and enforcement of those easements.

Summary Budget Information for Result 1:

	M.L. 2010
Trust Fund Budget:	\$485,000
Amount Spent:	\$415,220
Balance:	\$ 69,780

Deliverable	Completion Date	Budget
1. Protect up to 40-80 acres by: a. completing 1-2 conservation easements b. dedicating funds to ensure long-term easement sustainability	June 30, 2012	\$415,220 a. included in CE acquisition costs, and personnel b. \$10,000 All as outlined in Attachment A.

Completion Date: June 30, 2012

Final Report Summary:

Under this phase of the Metro Corridors program, the Land Trust met project goals and exceeded acreage goals by completing two conservation easements, Scandia and Emmans Farm, which collectively protect 374 acres of land. Two additional

projects were completed using both 2009 and 2010 ENRTF funding, and were reported as part of our accomplishments in the 2009 report. In this final report on the 2010 appropriation, we will discuss the two projects but will not include these acres in our 2010 accomplishments in order to avoid double counting.

Of the four projects, two are located in the Northwest Area, one in the Central Area, and one in the East Area. All four projects are located within Land Trust priority sites and build upon prior protection work completed under previous phases of this grant or other Land Trust initiatives. Specifically, these parcels met the following project selection criteria:

1. Habitat: quality and quantity of existing habitat on site; protects riparian areas and buffers water resources
2. Context: proximity and relationship to other protected lands
3. Opportunity: cost-benefit ratio: which landowners will participate now
4. Other Benefits: meeting multiple objectives, including visual and physical access, forestry goals, water quality, etc.

Both parcels exceeded our typical average parcel size of 50 acres for Metro area projects, further demonstrating of the unique conservation opportunity represented by the properties protected by the Land Trust under this phase of the grant.

Because of the large number of potential conservation projects involved in this grant and because many projects initiated or worked on under this grant are not actually completed in this phase of the project, the Land Trust does not allocate professional services expenses to specific conservation easement projects. Funding that is attributable to a specific project is described below and on the attached summary of purchased easements.

Descriptions and Results by Area:

East Area: Chisago and Washington Counties

Acres protected: 294

Easements completed: 1

Project: Scandia, Washington County

Description: This 294-acre property is located within the City of Scandia, in the northeast corner of Washington County. The property includes woodlands, wetlands and grasslands on the property which are key habitats for a variety of species in greatest conservation need, including bald eagles and American badgers, both of which have been observed on the property.

The easement prohibits residential use and division of the property. Agricultural use is limited and will no longer be allowed following any future restoration of those areas. Protection of this property also complements Falls Creek SNA and three other nearby easements which lie within the same priority corridor.

\$7,500 of ENRTF funds and a \$7,500 donation made by the landowner were used to cover easement monitoring, management, and enforcement. The value of this donated easement is \$1,050,000.

Northwest Area: Wright, Sherburne, Isanti and Anoka Counties

Acres protected: 125

Easements completed: 2

Project: Emmans Farm, Anoka County

Description: Located in the City of St. Francis, this 80-acre property is adjacent to an additional 80-acre parcel protected in 2005 by the same family. The property is comprised of a mix of wetland types interspersed with hardwood forest, supporting a large array of terrestrial and aquatic species. Additionally, the property lies in a regionally significant ecological area as identified by the MN DNR.

The easement prohibits residential use and division of the property. Agricultural use is limited to a very small portion of the property where it currently occurs and will no longer be allowed following any future restoration of that area.

The Land Trust purchased this easement for \$80,000, a price below the fair-market value of \$192,000. Funds for the purchase price came from 2010 ENRTF funding. \$13,000 of ENRTF funds (\$2,500 from 2010 and \$10,500 from 2011) were used to cover easement monitoring, management, and enforcement.

Project: Deer Lake, Anoka County

Description: This 45-acre property is located in East Bethel, adjacent to and containing portions of the Sandhill Crane Natural Area. The property includes oak forest, mixed hardwood swamp, and emergent marsh plant communities that have been mapped by the Minnesota County Biological Survey. Additionally, the property features 1,095 feet of undeveloped shoreline along Deer Lake.

The easement prohibits division of the property. Residential use is limited, and agricultural use is prohibited.

The Land Trust purchased this easement for the fair market value of \$163,000. To simplify grant accounting, we used funds from the 2010 supplemental grant to cover the entire purchase price (minus the option consideration of \$100). \$15,000 of 2009 ENRTF funds were used to cover stewardship on this project. 2009 ENRTF funds also were used to cover personnel and project costs such as appraisal, title work and mapping. As stated above, the acreage for this project was counted under the 2009 ENRTF grant, and will not be counted under the accomplishments for the 2010 supplemental grant. Additional detail is provided in the attached Summary of Acquired Easements.

Central Area: Hennepin and Ramsey Counties

Acres protected: 44

Easements completed: 1

Project: Camp Kingswood, Hennepin County

Description: The property consists of 44 acres in western Hennepin County in the City of Minnetrista and lies within one of the County's highest priority natural resource corridors. The remnant maple-basswood forest and the eastern red cedar woodland on the property have both been identified as native plant communities by the Minnesota Land Cover Classification System. The property also features approximately 3,065 feet of shoreline along Kingswood Pond, which also is the site of a floating tamarack bog. The property also lies adjacent to other Camp Kingswood property that is protected with a conservation easement held by the MN DNR (through the former Metro Greenways program). Protection of this property also complements Gale Woods Park and other private easements on Whale Tail Lake, which lie within the same priority corridor.

The easement prohibits division of the property and agricultural use. Limited camp facilities, including an alternative residential use, are allowed. This easement is co-held with Hennepin County.

The Land Trust purchased this easement for \$200,000, a price below the fair-market value of \$225,000. Funds for the purchase price came from the Land Trust's 2009 and 2010 grants, as well as Hennepin County. Hennepin County also provided \$15,000 to cover easement stewardship on this project. As noted above, the acreage for this project was counted under the 2009 ENRTF grant, and will not be counted under the accomplishments for the 2010 supplemental grant. Additional detail is provided in the attached Summary of Acquired Easements.

V. TOTAL TRUST FUND PROJECT BUDGET:

M.L. 2010

Personnel: \$22,006 to cover a portion of the salaries and related benefits of staff working on projects funded under this grant

Acquisition, including easements: \$383,214

Stewardship: \$10,000 dedicated to the Stewardship and Enforcement Fund. Actual amounts committed for stewardship were determined upon the number and nature of specific projects completed and the availability of other funds.

TOTAL ENRTF PROJECT BUDGET: \$485,000 appropriated; \$415,220 spent

Explanation of Capital Expenditures Greater Than \$3,500: N/A

VI. OTHER FUNDS & PARTNERS:

A. Project Partners: Project partners for the 2010 phase included Metro Conservation Corridors partners (please see overall MeCC final report for list of project partners) and private landowners, local governments, regional, state and federal agencies, nonprofit organizations and citizen groups.

B. Project Impact and Long-Term Strategy: This project is part of the Land Trust's long-term, strategic conservation agenda. The conservation agenda sets out the specific conservation focus of the Minnesota Land Trust. This focus includes natural habitats for wildlife, fish and plants, lakeshores, rivers and streams, and scenic landscapes accessible or visible to the public. The conservation agenda also identifies a suite of critical landscapes throughout Minnesota that embody the natural and cultural features that make Minnesota unique. The Metropolitan Conservation Corridors is one of the Land Trust's identified critical landscapes – one that addresses the unique conservation challenges that exist in a largely developed area.

C. Other Funds Spent During the Project Period: By working to acquire primarily donated conservation easements, or easements through bargain purchases, the Minnesota Land Trust was able to protect lands at a fraction of what it would cost to purchase comparable lands in fee. Additional funds were spent by the Minnesota Land Trust to cover costs associated with the project not covered by the grant.

D. Spending History: This project is part of the Land Trust's ongoing MeCC conservation easement program. In addition to Land Trust operating funds spent on the project, we have received previous ENRTF appropriations over the past years as follows: \$ 230,000 in 2003; \$ 230,000 in 2005; \$134,000 in 2007; \$225,000 in 2008; and \$250,000 in 2009.

VII. DISSEMINATION: The Land Trust disseminated information about the specific land protection projects completed under this grant through our newsletter, email updates, web site, and press releases. The Land Trust also shared information about conservation easements generally and our experience with our partner organizations, other easement holders, local communities, as well as policy makers including members of the LCCMR and LSOHC.

VIII. REPORTING REQUIREMENTS: Periodic work program process reports were submitted February 1 and August 1 of each year, starting in February 2011. This is the final work program report.

IX. RESEARCH PROJECTS: N/A

Attachment A: Budget Detail for 2010 Projects

Project Title: *Metro Conservation Corridors - Phase V: Minnesota Land Trust*

Project Manager Name: *Sarah Strommen*

Trust Fund Appropriation: \$ 485,000

2010 Trust Fund Budget	Result 1 Budget: Approved October 2011	Amount Spent as of 6/30/2012	Balance as of 6/30/2012
	<i>Aquiring Conservation Easements</i>		
BUDGET ITEM			
MLT and Contract Personnel:	85,000	22,005	62,995
Wages and benefits: Staff expenses including salaries, benefits (FICA,FUTA. SUI, worker's comp health insurance, 401 (k), etc.) and related costs for conservation directors or other land protection staff, staff attorney and other support staff.			
Land protection project professional services, including negotiating and drafting conservation easements and/or completing easement baseline documentation and legal review services			
Conservation Easement Acquisition Costs (less than fee)	390,000	383,214	6,786
Purchase price of conservation easement(s)			
Title work, insurance, etc.			
Maps, GIS (including project mapping by Community GIS)			
Film			
Other (including appraisals, survey, recording fees, etc.)			
Easement Stewardship: funds dedicated to perpetually monitoring, managing, and enforcing acquired easements	10,000	10,000	0
COLUMN TOTAL	\$485,000	\$415,219	69,781

Minnesota Land Trust: Metro Conservation Corridors –2010 (Phase 5 Supplemental)
 Summary of Acquired Easements

PURCHASED EASEMENTS

Project	Acres	Funding Type	Funds Use	Funding Amount
Deer Lake Anoka County	45	ENRTF – 2010 Land Trust allocation	Purchase price of conservation easement	\$163,000
		ENRTF – 2009 Land Trust allocation	Stewardship	\$15,000
Camp Kingswood Hennepin County	44	ENRTF-2009 Land Trust allocation	Purchase price of conservation easement	\$41,500
		ENRTF-2010 Land Trust allocation	Purchase price of conservation easement	\$131,000
		Hennepin County	Purchase price of conservation easement	\$27,500
		Hennepin County	Stewardship	\$15,000
		Landowner donation	Donated value of conservation easement	\$25,000
Emmans Farm Anoka County	80	ENRTF-2010 Land Trust allocation	Purchase price of conservation easement	\$80,000
		ENRTF-2010 Land Trust allocation	Stewardship	\$2,500
		ENRTF – 2011 Land Trust allocation	Stewardship	\$10,500
		Landowner donation	Donated value of conservation easement	\$112,000

In addition to the expenses listed above, staff time and professional services expenses covering closing costs, title review, etc. were incurred and covered by the Land Trust's 2009 and 2010 Metro Conservation Corridors allocations. The Land Trust does not allocate staff time or professional services expenses to specific conservation projects.

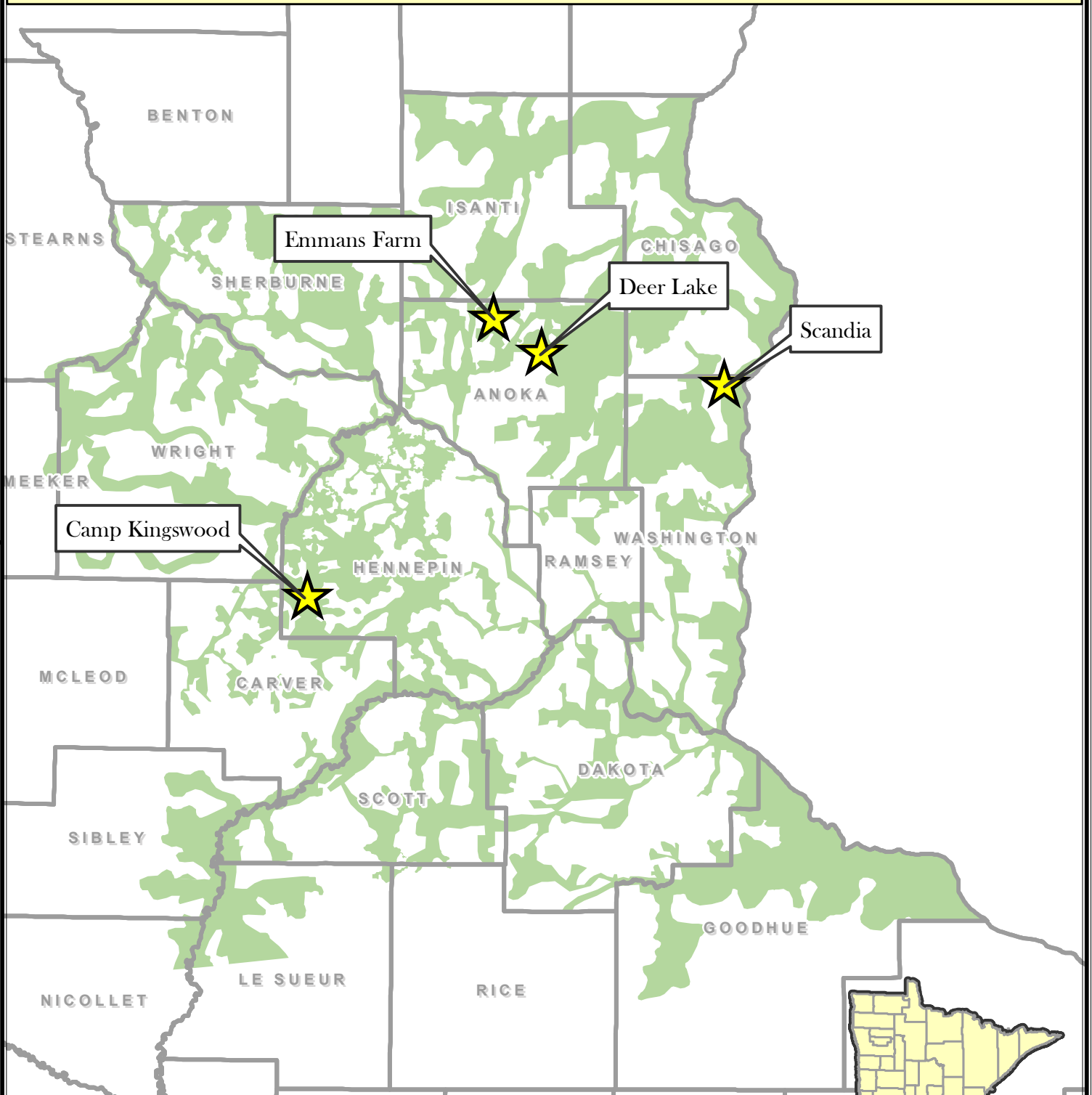
DONATED EASEMENTS

Project	Acres	Funding Type	Funds Use	Funding Amount
Scandia Washington County	294	ENRTF – 2010 Land Trust allocation	Stewardship	\$7,500
		Landowner donation	Stewardship	\$7,500
		Landowner donation	Donated value of conservation easement	\$1,050,000

In addition to the expenses listed above, staff time and professional services expenses covering closing costs, title review, etc. were incurred and covered by the Land Trust's 2010 Metro Conservation Corridors allocation. The Land Trust does not allocate staff time or professional services expenses to specific conservation projects.

Minnesota Land Trust Completed Projects

METRO CONSERVATION CORRIDORS PARTNERSHIP
2010 - PHASE V SUPPLEMENTAL



Completed Projects



Metro Conservation Corridors



MINNESOTA LAND TRUST
2010 MeCC Completed Projects
Phase V Supplemental



PROJECT: Scandia, Washington County

DESCRIPTION: This 294-acre property is located within the City of Scandia, in the northeast corner of Washington County. The property includes woodlands, wetlands and grasslands on the property which are key habitats for a variety of species in greatest conservation need, including bald eagles and American badgers, both of which have been observed on the property.



PROJECT: Emmans Farm, Anoka County

DESCRIPTION: Located in the City of St. Francis, this 80-acre property is adjacent to an additional 80-acre parcel protected in 2005 by the same family. The property is comprised of a mix of wetland types interspersed with hardwood forest, supporting a large array of terrestrial and aquatic species. Additionally, the property lies in a regionally significant ecological area as identified by the MN DNR.



PROJECT: Deer Lake, Anoka County*

DESCRIPTION: This 45-acre property is located in East Bethel, adjacent to and containing portions of the Sandhill Crane Natural Area. The property includes oak forest, mixed hardwood swamp, and emergent marsh plant communities that have been mapped by the Minnesota County Biological Survey. Additionally, the property features 1,095 feet of undeveloped shoreline along Deer Lake.



PROJECT: Camp Kingswood, Hennepin County*

DESCRIPTION: The property consists of 44 acres in western Hennepin County in the City of Minnetrista and lies within one of the County's highest priority natural resource corridors. The remnant maple-basswood forest and the eastern red cedar woodland on the property have both been identified as native plant communities by the Minnesota Land Cover Classification System. The property also features approximately 3,065 feet of shoreline along Kingswood Pond, which also is the site of a floating tamarack bog.

*These two projects also used 2009 ENRTF funding and acreage for these projects were counted under the 2009 grant. To avoid double-counting, the acreage for these two projects are not counted under the accomplishments for the 2010 supplemental grant.

2010 Project Abstract - For the Period Ending June 30, 2012

PROJECT TITLE: Metropolitan Conservation Corridors – Phase V Supplemental – Minnesota Valley Trust, Inc. – 3.3, Expansion of Minnesota Valley National Wildlife Refuge
PROJECT MANAGER: Deborah Loon
AFFILIATION: Minnesota Valley National Wildlife Refuge Trust, Inc.
MAILING ADDRESS: 3815 East American Boulevard
CITY/STATE/ZIP: Bloomington, MN 55425
PHONE: 612-801-1935
E-MAIL: dloon@mnvalleytrust.org (or debloon@comcast.net)
WEBSITE: [If applicable] www.mnvalleytrust.org
FUNDING SOURCE: Environment and Natural Resources Trust Fund
LEGAL CITATION: M.L. 2010, Ch. 362, Sec. 2, Subd. 4(g)

APPROPRIATION AMOUNT: \$325,000

Overall Project Outcome and Results

The Minnesota Valley Trust acquired 103 acres of priority lands in Scott County to expand the St. Lawrence Unit of the Minnesota Valley National Wildlife Refuge. Of the 103 acres acquired, 70 acres were acquired with Environment and Natural Resources Trust Fund and 33 acres were acquired with other private, non-state funds.

An additional 63.71 acres were acquired from two other landowners using other private, non-state funds as match of the ENRTF grant. Those acquisitions expand the Jessenland Unit of the Minnesota Valley Refuge in Sibley County. The total leverage to this project was 96.71 acres acquired using other, non-state funds.

These targeted acquisitions expand upon prior acquisitions funded in part by the Environment and Natural Resources Trust Fund, as recommended by the LCCMR. The parcels acquired are adjacent to or very near other lands protected by the Minnesota Valley Trust for the Minnesota Valley National Wildlife Refuge. All are within the expansion boundaries for the Refuge as identified through a public planning process by the US Fish and Wildlife Service and documented in the Refuge's "Comprehensive Conservation Plan."

After any needed restoration and enhancement, the lands will be donated to the USFWS for perpetual management as part of the Minnesota Valley National Wildlife Refuge. They will be managed for wildlife and open to the public for wildlife-dependent recreation, including hunting, fishing, wildlife observation, photography, wildlife interpretation and environmental education.

Project Results Use and Dissemination

The Minnesota Valley Trust will publicize the completion of this project through its website and news releases. All funding partners will be acknowledged on Refuge Unit kiosks, including the Environment and Natural Resources Trust Fund, as recommended by the Legislative Citizen Commission on Minnesota Resources.

**Environment and Natural Resources Trust Fund 2009 Work Program Final Report
&
Environment and Natural Resources Trust Fund 2010 Work Program Final Report**

Date of Report: August 1, 2012
Final Report

	M.L. 2009	M.L. 2010
Date of Work Program		
Approval:	June 16, 2009	
Project Completion Date:	June 30, 2011	June 30, 2012

I. PROJECT TITLE: Metropolitan Conservation Corridors – Phase V – Minnesota Valley Trust, Inc. – 3.3, Expansion of Minnesota Valley National Wildlife Refuge [M.L. 2009]
Metropolitan Conservation Corridors – Phase V Supplemental – Minnesota Valley Trust, Inc. – 3.3, Expansion of Minnesota Valley National Wildlife Refuge [M.L. 2010]

Project Manager: Deborah Loon
Affiliation: Minnesota Valley National Wildlife Refuge Trust, Inc.
Mailing Address: 3815 East American Boulevard
City / State / Zip: Bloomington, MN 55425
Telephone Number: 612-801-1935
E-mail Address: DLoon@mnvalley trust.org or DebLoon@comcast.net
FAX Number: 612-728-0700
Web Site Address: www.mnvalleytrust.org

Location: Metro, Central or Southeast (Minnesota River Valley). **County:** Carver, Scott, LeSueur and/or Sibley Counties.

Total Trust Fund Project Budget:	M.L. 2009	M.L. 2010	Total
Trust Fund Appropriation	\$ 225,000	\$325,000	\$550,000
Minus Amount Spent:	\$ 225,000	\$325,000	\$550,000
Equal Balance:	\$ 0	\$ 0	\$ 0

Legal Citation:

M.L. 2009, Chp. 143, Sec. 2, Subd. 4(f)

Appropriation Language:

\$3,375,000 is from the trust fund to the commissioner of natural resources for the fifth appropriation for acceleration of agency programs and cooperative agreements. Of this appropriation, \$2,185,000 is for Department of Natural Resources agency programs and \$1,190,000 is for agreements as follows: \$380,000 with the Trust for Public Land; \$90,000 with Friends of the Mississippi River; \$155,000 with Great River Greening; \$250,000 with Minnesota Land Trust; \$225,000 with Minnesota Valley National Wildlife Refuge Trust, Inc.; and \$90,000 with Friends of the Minnesota Valley for the purposes of planning, restoring, and protecting important natural areas in the metropolitan area, as defined under Minnesota Statutes, section 473.121, subdivision 2, and portions of the surrounding counties, through

grants, contracted services, technical assistance, conservation easements, and fee title acquisition. Land acquired with this appropriation must be sufficiently improved to meet at least minimum management standards as determined by the commissioner of natural resources. Expenditures are limited to the identified project corridor areas as defined in the work program. This appropriation may not be used for the purchase of residential structures, unless expressly approved in the work program. All conservation easements must be perpetual and have a natural resource management plan. Any land acquired in fee title by the commissioner of natural resources with money from this appropriation must be designated as an outdoor recreation unit under Minnesota Statutes, section 86A.07. The commissioner may similarly designate any lands acquired in less than fee title. A list of proposed restorations and fee title and easement acquisitions must be provided as part of the required work program. All funding for conservation easements must include a long-term stewardship plan and funding for monitoring and enforcing the agreement. To the maximum extent practical, consistent with contractual easement or fee acquisition obligations, the recipients shall utilize staff resources to identify future projects and shall maximize the implementation of biodiverse, quality restoration projects in the project proposal into the first half of the 2010 fiscal year.

M.L. 2010, Chp. 362, Sec. 2, Subd. 4(g)

Appropriation Language:

\$1,750,000 is added to Laws 2009, chapter 143, section 2, subdivision 4, paragraph (f), from the trust fund to the commissioner of natural resources for acceleration of agency programs and cooperative agreements. Of this appropriation, \$1,750,000 is for agreements as follows: \$890,000 with the Trust for Public Land; \$485,000 with Minnesota Land Trust; \$325,000 with Minnesota Valley National Wildlife Refuge Trust, Inc.; and \$50,000 with Friends of the Minnesota Valley for planning, restoring, and protecting important natural areas in the metropolitan area, as defined under Minnesota Statutes, section 473.121, subdivision 2, and portions of the surrounding counties, through grants, contracted services, technical assistance, conservation easements, and fee title acquisition. Land acquired with this appropriation must be sufficiently improved to meet at least minimum management standards as determined by the commissioner of natural resources. Expenditures are limited to the identified project corridor areas as defined in the work program. This appropriation may not be used for the purchase of residential structures, unless expressly approved in the work program. All conservation easements must be perpetual and have a natural resource management plan. Any land acquired in fee title by the commissioner of natural resources with money from this appropriation must be designated as an outdoor recreation unit under Minnesota Statutes, section 86A.07. The commissioner may similarly designate any lands acquired in less than fee title. A list of proposed restorations and fee title and easement acquisitions must be provided as part of the required work program. All funding for conservation easements must include a long-term stewardship plan and funding for monitoring and enforcing the agreement.

II. and III. FINAL PROJECT SUMMARY

M.L. 2009 Final Project Summary: The Minnesota Valley National Wildlife Refuge Trust, Inc. acquired 96 acres of priority lands in the Minnesota River Valley floodplain in Sibley County to expand the Jessenland Unit of the Minnesota Valley National Wildlife Refuge. Of the 96 acres acquired, the Environment and Natural Resources Trust Fund paid for 90 acres and the Minnesota Valley Trust paid for 6 acres with nonprofit / other non-state funds.

Using other non-state funds, the Minnesota Valley Trust also acquired 44.67 acres of priority lands in the Minnesota River Valley in Scott County to expand the Blakely Unit of the Minnesota Valley National Wildlife Refuge. The Blakely and Jessenland Units are on opposite (facing) sides of the Minnesota River and, together, form a large contiguous block of priority wildlife habitat.

M.L. 2010 Final Project Summary: The Minnesota Valley Trust acquired 103 acres of priority lands in Scott County to expand the St. Lawrence Unit of the Minnesota Valley National Wildlife Refuge. Of the 103 acres acquired, 70 acres were acquired with Environment and Natural Resources Trust Fund and 33 acres were acquired with other private, non-state funds. Actual grant acres is less than projected grant acres (93), due to higher land values than were anticipated at the time the work program was written (note: we reported acquiring 93 grant acres in prior work program updates in error).

An additional 63.71 acres were acquired from two other landowners using other private, non-state funds as match of the ENRTF grant. Those acquisitions expand the Jessenland Unit of the Minnesota Valley Refuge in Sibley County. The total leverage to this project was 96.71 acres acquired using other, non-state funds.

These targeted acquisitions expand upon prior acquisitions funded in part by the Environment and Natural Resources Trust Fund, as recommended by the LCCMR. The parcels acquired are adjacent to or very near other lands protected by the Minnesota Valley Trust for the Minnesota Valley National Wildlife Refuge. All are within the expansion boundaries for the Refuge as identified through a public planning process by the US Fish and Wildlife Service and documented in the Refuge's "Comprehensive Conservation Plan."

After any needed restoration and enhancement, the lands will be donated to the USFWS for perpetual management as part of the Minnesota Valley National Wildlife Refuge. They will be managed for wildlife and open to the public for wildlife-dependent recreation, including hunting, fishing, wildlife observation, photography, wildlife interpretation and environmental education.

IV. OUTLINE OF PROJECT RESULTS:

Result/Activity 1: Fee title acquisition

Description:

M.L. 2009: The Minnesota Valley National Wildlife Refuge Trust, Inc. acquired 96 acres of priority lands in the Minnesota River Valley floodplain in Sibley County to expand the Jessenland Unit of the Minnesota Valley National Wildlife Refuge. Of the 96 acres acquired, the Environment and Natural Resources Trust Fund paid for 90 acres and the Minnesota Valley Trust paid for 6 acres with nonprofit / other non-state funds.

Using other non-state funds, the Minnesota Valley Trust also acquired 44.67 acres of priority lands in the Minnesota River Valley in Scott County to expand the Blakely Unit of the Minnesota Valley National Wildlife Refuge. The Blakely and Jessenland Units are on opposite (facing) sides of the Minnesota River and, together, form a large contiguous block of priority wildlife habitat.

Appraised value was paid on both parcels:

- 1) \$240,000 on the 96 acres in Sibley County for the Jessenland Unit
- 2) \$129,543 on the 44.67 acres in Scott County for the Blakely Unit

Transaction costs for the acquisitions paid by with other private, non-state funds were:

- 1) \$4,283 on the 96 acres in Sibley County for Jessenland Unit
- 2) \$2,329 on the 44.67 acres in Scott County for Blakely Unit

Total cost of the two acquisitions -- \$376,155. Funds came from two sources:

- 1) Environment and Natural Resources Trust Fund -- \$225,000
- 2) MN Valley Trust funds -- \$151,155

M.L. 2010: The Minnesota Valley Trust acquired 103 acres of priority lands in Scott County to expand the St. Lawrence Unit of the Minnesota Valley National Wildlife Refuge. Of the 103 acres acquired, 70 acres were acquired with Environment and Natural Resources Trust Funds and 33 acres were acquired with other private, non-state funds. Actual grant acres (70) is less than projected grant acres (93), due to higher land value than was anticipated at the time the work program was written (note: we reported in error in prior work program updates that we acquired 93 grant acres).

An additional 63.71 acres were acquired from two other landowners using other, non-state funds as match of the ENRTF grant. Those acquisitions expand the Jessenland Unit of the Minnesota Valley Refuge in Sibley County. The total leverage to this project was 96.71 acres acquired using other, non-state funds.

A state certified appraisal was completed on the 103 acre parcel acquired in part (68%) with ENRTF. To complete the deal, the negotiated purchase price was 4.5% above appraised value. Fair market value was paid on the two match parcels acquired with other private, non-state funds:

- 1) \$473,800 on the 103 acres in Scott County for the St. Lawrence Unit (appraised at \$453,200)
- 2) \$69,589 on 23.55 acres in Sibley County for the Jessenland Unit
- 3) \$100,400 on 40.16 acres in Sibley County for the Jessenland Unit

Transaction costs for the acquisitions paid with other private, non-state funds were:

- 1) \$3,894 on the 103 acres in Scott County
- 2) \$843 on the 23.55 acres in Sibley County
- 3) \$620 on 40.16 acres in Sibley County

Total cost of the three acquisitions -- \$649,146. Funds came from two sources:

- 1) Environment and Natural Resources Trust Fund -- \$325,000
- 2) MN Valley Trust (private, non-state) funds -- \$324,146

The targeted acquisitions completed for both M.L. 2009 and 2010 expand upon prior acquisitions funded in part by the Environment and Natural Resources Trust Fund, as recommended by the LCCMR. The parcels acquired are adjacent to or very near other lands protected by the Minnesota Valley Trust for the Minnesota Valley National Wildlife Refuge or are in other public ownership, specifically Minnesota DNR. All lands are within the expansion boundaries for the Refuge as identified through a public planning process by the US Fish and Wildlife Service and documented in the Refuge's "Comprehensive Conservation Plan."

The acquired lands offer significant habitat for wildlife and opportunities for wildlife-dependent recreation. The lands run along the Minnesota River or are in the immediate watershed of the river, and include river frontage, floodplain, cropland and bluffs.

These acquisitions connect the river, floodplain forest and prairie habitat in the Minnesota River bottoms, benefiting many species of wildlife including wood ducks, mallards, bald eagles, grassland nesting birds as well as numerous resident game species such as turkeys and deer. The acquisitions and subsequent restoration and enhancement will improve water quality by retiring cropland in the Minnesota River Valley and restoring lands to the natural habitats of floodplain forest, wetlands and prairie.

After restoration and enhancement, the lands will be donated to the USFWS for perpetual management as part of the Minnesota Valley National Wildlife Refuge. They will be managed for wildlife and open to the public for wildlife-dependent recreation, including hunting, fishing, wildlife observation, photography, wildlife interpretation and environmental education.

Summary Budget Information for Result/Activity 1:

	M.L. 2009	M.L. 2010	Total
Trust Fund Budget:	\$ 225,000	\$325,000	\$550,000
Amount Spent:	\$ 225,000	\$325,000	\$550,000
Balance:	\$ 0	\$ 0	\$ 0

Deliverable/Outcome	Completion Date	Budget
1. M.L. 2009: Acquire 45 acres in fee title with ETF funds and 45 acres in fee title with other non-state funds	June 30, 2011	\$ 225,000
2. M.L. 2010: Acquire 93 acres in fee title with ETF funds and 93 acres in fee title with other non-state funds.	June 30, 2012	\$ 325,000

V. TOTAL TRUST FUND PROJECT BUDGET:

M.L. 2009:

Personnel: \$ 0

Contracts: \$ 0

Equipment/Tools/Supplies: \$ 0

Acquisition, including easements: \$ 225,000

Travel: \$ 0

Other: \$ 0

TOTAL M.L. 2009 TRUST FUND PROJECT BUDGET: \$ 225,000

M.L. 2010:

Personnel: \$ 0

Contracts: \$ 0

Equipment/Tools/Supplies: \$ 0

Acquisition, including easements: \$ 325,000

Travel: \$ 0

Other: \$ 0

TOTAL M.L. 2010 TRUST FUND PROJECT BUDGET: \$ 325,000

Explanation of Capital Expenditures Greater Than \$3,500: NA

VI. PROJECT STRATEGY:

A. Project Partners: US Fish & Wildlife Service, Friends of the Minnesota Valley, local units of government and others.

B. Project Impact and Long-term Strategy: This project is part of a long-term strategy to expand the Minnesota Valley National Wildlife Refuge by up to 10,000 acres. The expansion strategy was developed by the US Fish and Wildlife Service in its Comprehensive Conservation Plan for the Refuge, completed September 2004 after a thorough public input process.

This project will further acquisition work completed previously by the Minnesota Valley Trust with support from the ENRTF. The benefits of the project include the following:

- Connect the river, floodplain forest and prairie habitat in the Minnesota River bottoms, benefiting many species of wildlife including wood ducks, mallards, bald eagles, grassland nesting birds as well as numerous resident game species such as turkeys and deer.
- Improve water quality of the Minnesota River by retiring cropland and restoring lands to the natural habitats of floodplain forest, wetlands and prairie.
- Establish new lands for the public's enjoyment through the wildlife-dependent recreational activities of birding, photography, hiking, interpretation, hunting and fishing.

C. Other Funds Proposed to be Spent during the Project Period: M.L. 2009: \$225,000; M.L. 2010: \$325,000

D. Spending History:

Phase I (2003) - \$290,000 ETF and \$1,137,030 other non-state funds

Phase II (2005) - \$230,000 ETF and \$428,000 other non-state funds

Phase III (2007) - \$210,000 ETF and \$376,473 other non-state funds

Phase IV (2008) - \$225,000 ETF and \$197,019 other non-state funds

VII. DISSEMINATION: As projects are completed, the Minnesota Valley Trust will announce the accomplishments through press releases, the Trust website and the Metro Conservation Corridors website.

VIII. REPORTING REQUIREMENTS: Periodic work program progress reports will be submitted not later than February 1 and August 1 of each year. A final work program report and associated products for the M.L. 2009 appropriation will be submitted between June 30 and August 1, 2011 as requested by the LCCMR. A final work program report and associated products for the M.L. 2010 appropriation will be submitted between June 30 and August 1, 2012 as requested by the LCCMR.

IX. RESEARCH PROJECTS: NA

Attachment A: Budget Detail for 2010 Projects						
Project Title: Metropolitan Conservation Corridors, Phase V Supplemental – Minnesota Valley Trust, Inc. – 3.3, Expansion of Minnesota Valley National Wildlife Refuge						
Project Manager Name: Deborah Loon						
Trust Fund Appropriation: \$325,000						
2010 Trust Fund Budget	<u>Result 1 Budget:</u>	Amount Spent <i>(date)</i>	Balance 8.1.12	TOTAL BUDGET	TOTAL BALANCE	
	Fee title acquisition of 93 acres					
BUDGET ITEM						
Land acquisition	325,000	325,000	0	325,000	0	
COLUMN TOTAL	\$325,000	\$325,000	\$0	\$325,000	\$0	

