

# Go Places.

Minnesota State Colleges & Universities

2011 - 2012



# Minnesota State Colleges & Universities

## Campus locations



### Inside:

Find a college that's right for you .....	1
Stretch your dollars for college .....	2
College cost comparison .....	3
Zap college costs with financial aid .....	4
Services for veterans .....	4
Two-year state colleges .....	6, 10
Four-year state universities .....	7, 31
Earn college credits in high school, TRIO, disabilities services, online education .....	8
Around the world through study abroad .....	9
Planning for transfer .....	30

# Supercharge your future. Find a college that's right for you.

**POW!**

**You have lots of choices.**  
**Here are some things to consider:**

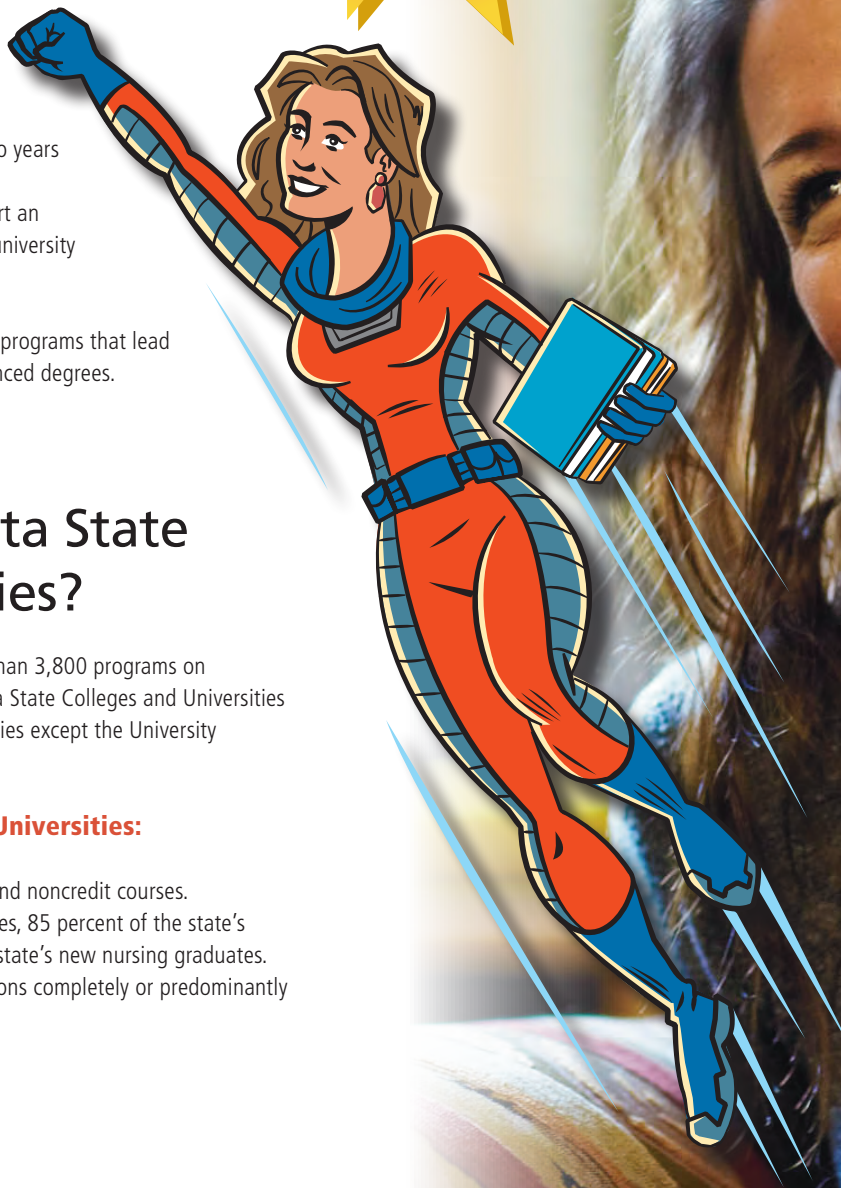
- **Technical and community colleges** are two-year colleges offering programs that can be completed in two years or less. You can earn a certificate, diploma or degree in a career area leading directly to a job. Or you can start an associate degree and transfer to a four-year college or university to finish a bachelor's degree.
- **State universities** are four-year institutions offering programs that lead to bachelor's degrees, master's degrees and other advanced degrees.

## What are the Minnesota State Colleges and Universities?

They are 31 public colleges and universities that offer more than 3,800 programs on 54 campuses and online at an affordable cost. The Minnesota State Colleges and Universities system includes all of the state's public colleges and universities except the University of Minnesota, which is a separate system.

### **Together, the Minnesota State Colleges and Universities:**

- Produce 34,700 graduates each year.
- Serve more than 430,000 students each year in credit and noncredit courses.
- Educate 49 percent of the state's new teaching graduates, 85 percent of the state's new law enforcement graduates and 83 percent of the state's new nursing graduates.
- Offer more than 440 programs and 10,000 course sections completely or predominantly online, taken by more than 100,000 students a year.







**LOWIE!**

# \$tretch

your dollars for college

**1 Get a jump on college.** You may take college-level courses as a high school junior and senior through Minnesota's Post-Secondary Enrollment Options program, known as PSEO. You won't have to pay tuition if you also are getting high school credit. A three-credit college-level math class, for example, would cost you \$517 at a two-year college or \$702 at a state university, on average, but you can take the class for free through PSEO.

Also consider Advanced Placement or International Baccalaureate classes. If your high school offers these classes and you finish them successfully, you might be able to skip introductory courses in those subjects when you get to college.

**2 Attend a two-year college, then transfer for your bachelor's degree.** Tuition costs less at a two-year state college, and you can transfer to a four-year college or university to complete your degree. Average two-year college tuition and fees are about \$5,171 per year, compared to \$7,026 at state universities, \$12,457 at the University of Minnesota, \$16,497 at trade schools and \$32,338 at private colleges.

**3 Live at home or get a roommate.** You can save even more money if you can live at home with your family or share an apartment with a roommate.

**4 Apply for financial aid.** Many students who could qualify for aid do not apply, so they don't know that grant money would have been available. Fill out the Free Application for Federal Student Aid – known as the FAFSA – to be eligible for grants and federally guaranteed loans.

**5 Look for scholarships.** Many scholarships are available for students with special interests and backgrounds. They are a great source of aid, and you do not need to pay back a scholarship.

**6 Work hard in high school.** Take math, science and English courses each year to get ready for college. That way, you're less likely to need remedial classes, which you have to pay for but don't count toward your degree.

Check this book for additional information about financial aid, how to earn college credits in high school and more.



# College cost comparison

## Annual tuition and fees, 2011-2012

### Minnesota State Colleges (2-year)

\$5,169	..... Alexandria Technical and Community College
\$4,738	..... Anoka-Ramsey Community College
\$5,506	..... Anoka Technical College
\$5,209	..... Central Lakes College
\$5,201	..... Century College
\$5,521	..... Dakota County Technical College
\$5,036	..... Fond du Lac Tribal & Community College
\$4,835	..... Hennepin Technical College
\$5,152	..... Inver Hills Community College
\$4,872	..... Lake Superior College
\$5,012	..... Minneapolis Community & Technical College
\$5,432	..... Minnesota State College–Southeast Technical
\$5,166	..... Minnesota State Community & Technical College
\$5,422	..... Minnesota West Community & Technical College
\$5,253	..... Normandale Community College
\$5,220	..... North Hennepin Community College
	..... Northeast Higher Education District
\$5,111	..... Hibbing Community College
\$5,119	..... Itasca Community College
\$5,111	..... Mesabi Range Community & Technical College
\$5,141	..... Rainy River Community College
\$5,141	..... Vermilion Community College
\$5,253	..... Northland Community & Technical College
\$5,329	..... Northwest Technical College
\$4,925	..... Pine Technical College
\$5,173	..... Ridgewater College
\$5,332	..... Riverland Community College
\$5,435	..... Rochester Community & Technical College
\$5,149	..... St. Cloud Technical and Community College
\$4,986	..... Saint Paul College
\$5,169	..... South Central College

### Private trade schools (2-year)

\$10,000 - \$18,800*	..... Aveda Institute
\$14,745*	..... Dunwoody College of Technology
\$17,271	..... Brown College
\$19,575	..... Minn. School of Business/Globe College

\*Costs vary by program.

### Minnesota State Universities (4-year)

\$7,599	..... Bemidji State University
\$6,341	..... Metropolitan State University
\$6,836	..... Minnesota State University, Mankato
\$6,937	..... Minnesota State University Moorhead
\$6,846	..... St. Cloud State University
\$7,424	..... Southwest Minnesota State University
\$7,203	..... Winona State University

### University of Minnesota (4-year)

\$12,091	..... University of Minnesota, Morris
\$12,380	..... University of Minnesota, Duluth
\$12,902	..... University of Minnesota, Twin Cities

### Private colleges and universities (4-year)

\$22,280	..... Bethany Lutheran College
\$27,250	..... St. Mary's University of Minnesota
\$28,500	..... Concordia University (St. Paul)
\$29,328	..... College of St. Scholastica
\$29,360	..... Concordia College (Moorhead)
\$29,460	..... Bethel University
\$30,412	..... Augsburg College
\$30,585	..... Minneapolis College of Art & Design
\$31,640	..... St. Catherine University
\$31,948	..... Hamline University
\$32,073	..... University of St. Thomas
\$33,606	..... St. John's University
\$34,308	..... College of Saint Benedict
\$35,897	..... Gustavus Adolphus College
\$38,150	..... St. Olaf College
\$42,021	..... Macalester College
\$42,942	..... Carleton College

Costs for Minnesota State Colleges and Universities are for average full-time tuition and fees per year for Minnesota residents. Some colleges and universities charge additional fees. Fees vary depending on program. For exact tuition and fees, contact the admissions office at the college or university that interests you. The costs do not include room and board for any institution listed.

# Comparing average costs

Many students do not pay full tuition because they receive financial aid. About 60 percent of students enrolled in the state colleges and 63 percent of students enrolled at state universities received some kind of financial aid award in 2010. The average award was \$6,326 for students at the colleges and \$9,466 for students at the universities.

## 2-year

**\$5,170 Minnesota State Colleges**

**\$16,497 Private trade schools**

## 4-year

**\$7,026 Minnesota State Universities**

**\$12,457 University of Minnesota**

**\$32,338 Private colleges and universities**

**Tuition at Minnesota State Colleges and Universities is lower than tuition at many other colleges, universities and trade schools because the state of Minnesota pays part of the cost for state residents.**

### Out-of-state tuition

If you live in Wisconsin, North Dakota, South Dakota or Manitoba, Canada, you are eligible for tuition rates similar to those paid by Minnesota residents. Many Minnesota State Colleges and Universities allow some other out-of-state students to pay the lower in-state rates; check with the college or university about its policy. Generally, out-of-state tuition is double the rate that Minnesota students pay.

### Room and board costs

The cost for a double room and board at a state university averages \$6,725 for one year. Some two-year colleges also have housing on campus or nearby, and many others can help you find housing in the area. The costs of these options will vary.

**How to apply for financial aid**

Your key to receiving financial aid to help pay your college costs is filling out the Free Application for Federal Student Aid, or FAFSA form.

**Free Application for Federal Student Aid**

Complete the FAFSA after Jan. 1 of your senior year. Find the form online at [www.fafsa.ed.gov](http://www.fafsa.ed.gov) or pick up the form at your school counselor's office. For help with completing the form, go to your high school counselor or the financial aid office at the college or university you plan to attend. The FAFSA determines your eligibility for one or more of the following types of financial aid:

**Scholarships**

Scholarships are a great source of aid, and you do not need to pay them back. Many scholarships are available for students with special interests and backgrounds. Talk to your guidance counselor about what kind of scholarships you can get.

**Grants**

You may be eligible to receive federal and state grants of \$300 to more than \$7,000 per year. You do not need to pay these back.

**Work study**

Work study programs give you the opportunity to work on campus or with approved off-campus employers to earn money to pay for college. Work study jobs are often very flexible, allowing you to work around your classes and personal schedules.

**Student loans**

You also may be eligible for student loans, which must be paid back. Student loans usually have a lower interest rate than other kinds of loans.

**Tax credits**

Some college students also benefit from two federal tax credit programs, the American Opportunity Tax Credit and the Lifetime Learning tax credit. These may apply to you or your family, depending on your financial circumstances.

**Services for veterans**

Veterans are welcomed at the state colleges and universities. If you've served in the armed forces, you might be eligible for help with paying for college. Stop by one of the on-campus veterans centers for information, support and assistance. Also, check with the campus financial aid office about benefits from the Minnesota GI Bill. Or go to [www.mnscu.edu/military](http://www.mnscu.edu/military).





# Here are examples of how financial aid is helping four full-time students pay for college



For all four students, federal and state grants (which do not need to be paid back) cover a significant part of the cost. Tuition and fees are the only costs paid directly to the college or university. The total costs are estimates that could be much lower, depending on your circumstances. Some families also take out a bank loan to pay some costs of college.

Costs are for average full-time tuition and fees per year for Minnesota residents.

## Scenario 1 (state college)

### Tyrell's costs for one year

Tyrell is a freshman at a two-year college in the Twin Cities area. He has a sister in college, and his parents own a home but have no other significant savings. His family's income: \$45,000.

#### Tuition and fees

2011-2012 tuition .....	\$4,644
Fees .....	\$527
Total .....	\$5,171

### Tyrell's federal and state grants

Federal Pell Grant	
(does not need to be paid back) .....	\$4,000
Minnesota grant	
(does not need to be paid back) .....	\$863
Total .....	\$4,863

Tyrell has estimated room and board expenses of \$9,016 and living expenses of \$3,850, but actual costs could be much less if he lives with his parents or shares an apartment. Living expenses include transportation, books, clothing and social activities. He qualifies for loans of up to \$5,500, which must be paid back after graduation, and for work-study earnings up to \$5,000.

## Scenario 2 (state college)

### Jessica's costs for one year

Jessica is a freshman at a two-year college in rural Minnesota. She has a brother in high school, and her single mother has no significant savings. Her family's income: \$30,000.

#### Tuition and fees

2011-2012 tuition .....	\$4,644
Fees .....	\$527
Total .....	\$5,171

### Jessica's federal and state grants

Federal Pell Grant	
(does not need to be paid back) .....	\$5,550
Minnesota grant	
(does not need to be paid back) .....	\$629
Total .....	\$6,179

Jessica has estimated room and board expenses of \$5,508 and living expenses of \$7,783, but actual costs could be much less if she lives with her mother or shares an apartment. Living expenses include transportation, books, clothing and social activities. She qualifies for loans of up to \$5,500, which must be paid back after graduation, and for work-study earnings up to \$5,000.

## Scenario 3 (state university)

### Ling's costs for one year

Ling is a freshman at a state university. She has a brother in high school, and her single mother has no significant savings. Her family's income: \$30,000.

#### Tuition and fees

2011-2012 tuition .....	\$6,500
Fees .....	\$530
Total .....	\$7,030

### Ling's federal and state grants

Federal Pell Grant	
(does not need to be paid back) .....	\$5,550
Minnesota State Grant	
(does not need to be paid back) .....	\$1,950
Total .....	\$7,500

Ling has estimated campus dormitory room and board of \$6,725 and living expenses of \$4,300, which include transportation, books, clothing and social activities. She qualifies for \$5,500 in Federal Direct Loans, which must be paid back after graduation, and \$3,000 in work-study earnings.

## Scenario 4 (state university)

### Matthew's costs for one year

Matthew is a freshman at a state university. He has a brother in college, and his parents own a home but have no other significant assets or savings. His family's income: \$60,000.

#### Tuition and fees

2011-2012 tuition .....	\$6,500
Fees .....	\$530
Total .....	\$7,030

### Matthew's federal and state grants

Federal Pell Grant	
(does not need to be paid back) .....	\$2,800
Minnesota State Grant	
(does not need to be paid back) .....	\$1,888
Total .....	\$4,688

Matthew has estimated campus dormitory room and board of \$6,725 and living expenses of \$4,300, which include transportation, books, clothing and social activities. He qualifies for \$5,500 in Federal Direct Loans, which must be paid back after graduation, and \$3,000 in work-study earnings.

**ZOIKS!**



# Jumpstart your career at a two-year state college

You can start at a two-year college and transfer to a four-year college or university, or you can complete a one-year or two-year career program and go to work right away. Either option is a great value because tuition costs are lower at state colleges.

You can complete your studies in less time and for less total cost if you come well prepared for college-level work, especially by taking math, English, science and social studies classes every year in high school. Also, some programs of study in college require more math and science, so your high school preparation makes a difference.

## Admissions requirements

The two-year state community and technical colleges have an open admissions policy. This means:

- You can enroll if you have a high school diploma or a GED. Even without those, you may be admitted if you demonstrate potential for success in college.
- You don't have to take a standardized test to be admitted, and your high school grades and class rank are not considered.
- After you are admitted, you will take a placement test. That will tell you if you need to take remedial or developmental courses, which will not count toward a degree, before you can take college-level courses. Many students need just one developmental course, often in math or English. If you have taken these subjects every year in high school, you are more likely to do well on the placement test.

Apply to a two-year college early in 12th grade. That increases your chances of being admitted to the specific program you want when you enter college. Some programs are more popular than others and fill early.



**SUPER!**

# Earn a bachelor's degree at a four-year state university

**The state universities offer hundreds of academic programs. You can start at one of the seven state universities or transfer from a state college or other college and university.**

## Admissions requirements

The seven state universities generally will accept you as a first-year student if you can answer “yes” to at least one of these questions:

- Did you graduate in the top half of your high school class?
- Did you score 21 or higher on the ACT standardized test?
- Did you receive a combined score of 1,000 or higher on the SAT standardized test?

Some state universities may ask you to meet slightly different requirements to be admitted. Check with the university admissions office for details. Even if you don't meet the minimum requirements, you may be considered for admission under special provisions.

## What courses do I need to take in high school?

For admission to a state university, you should have completed these courses in high school:

- Four years of English, including composition, literature and speech
- Three years of math, including two years of algebra, one of which is intermediate or advanced algebra, and one year of geometry
- Three years of science, including one year each of a biological and a physical science, all with significant laboratory experience
- Three years of social studies, including one year each of geography and U.S. history
- Two years of a single world language, including non-English native languages and American Sign Language
- One year of arts (visual arts and the performing arts of theater, music, dance and media arts)

## When should you apply?

Apply early in 12th grade for the best chance of being admitted. Some universities and programs do not have room for all qualified applicants.

## Graduate programs

The state universities offer graduate programs leading to master's degrees, other advanced degrees including some doctorate degrees, and specialized certificates. Call the office of graduate studies or the admissions office for information and a graduate program application.

## Minors, emphases, options and preprofessional programs

The state universities offer many ways to pursue your interests through a minor, emphasis, option or a preprofessional program in addition to programs on Pages 32 and 33. Preprofessional programs help students prepare for advanced study in areas such as agriculture, architecture, dentistry, engineering, law, medicine, optometry, pharmacy, physical therapy and veterinary medicine.



# More to know

## Earn college credits in high school

High school juniors and seniors can receive both high school and college credit for college-level courses completed through the Post-Secondary Enrollment Options program, also known as PSEO. You may take courses on a campus or, where available, at your high school at no cost to you if you also earn high school credit.

To find out if you are eligible and how to enroll, ask your high school counselor or the admissions office at the college or university you want to attend. Or go to [www.mnscu.edu/pseo](http://www.mnscu.edu/pseo).

High school juniors must be in the upper one-third of their class or score at or above the 70th percentile on a test such as the ACT or SAT. Seniors must be in the upper one-half of their class or score at or above the 50th percentile on the ACT or SAT. Colleges and universities may admit students based on other documentation of ability to perform college-level work. The college or university makes the final determination on a student's readiness.

Some high schools also offer Advanced Placement or International Baccalaureate classes. You can get a head start on college-level work by taking these classes. If you are successful, you might be able to skip introductory courses in those subjects when you get to college, which will save you money.

## TRIO services help students succeed

Many campuses offer TRIO programs, which help students do well in college. The programs serve first-generation college students – students from families in which neither parent attended college – among others.

Also, many colleges and universities have additional services to help you if you do not qualify for TRIO programs.

## Services for students with disabilities

The state colleges and universities all have accessible buildings for students with disabilities, and they provide accommodations to help students who have documented physical and learning disabilities. To learn more, talk with the disability coordinator at the college or university you're interested in attending.

## Online education: Minnesota Online

Online education helps busy students meet their goals. You can supplement your on-campus class schedule with online classes or complete a degree, certificate or diploma program entirely online. Through [www.mnscu.edu/online](http://www.mnscu.edu/online) you can find thousands of courses and more than 440 online programs offered by the state colleges and universities. Minnesota Online also provides student support, pre-admissions planning and advising seven days a week through e-mail, Ask a Question, Web Chat and a toll-free number, 1-800-456-8519.

## Additional helpful websites

- Career planning tools, job information, educational programs: [www.iseek.org](http://www.iseek.org)
- Guide to career and educational exploration: [www.mncareers.org](http://www.mncareers.org)
- Create a personal portfolio: [www.efoliominnnesota.com](http://www.efoliominnnesota.com)



# ZOOM!





# Around the world through study abroad

Explore new countries, meet local residents and learn about their cultures through study abroad programs offered by the Minnesota State Colleges and Universities. Programs range from a few weeks to a full semester abroad, and many programs feature volunteer projects in communities and local schools that let you contribute your talents while you learn.

You can visit ancient ruins and elegant castles, and learn first-hand about the history of countries such as Italy, England, Denmark, Australia and Mexico. Ask about study abroad information at the colleges or universities that interest you.

**Clockwise from top left:** Students visit a pyramid in Puerto Aventuras, Mexico; Mohamed Seck received a Boren Scholarship to study in Jordan; student Kelly Manning in Sydney, Australia; a group of students in Prague, Czech Republic; students on an exchange program at the Leaning Tower of Pisa in Italy.





# 2-year state colleges

## How to use these program grids

The program grids on the following pages will help you find which programs are offered at the two-year state colleges.

To use the grid, choose a program that you are interested in from the column on the left. Then look across in the same row. Dots show where the program is offered. From a dot, follow the column up to find the name and location of the campus that offers the program.

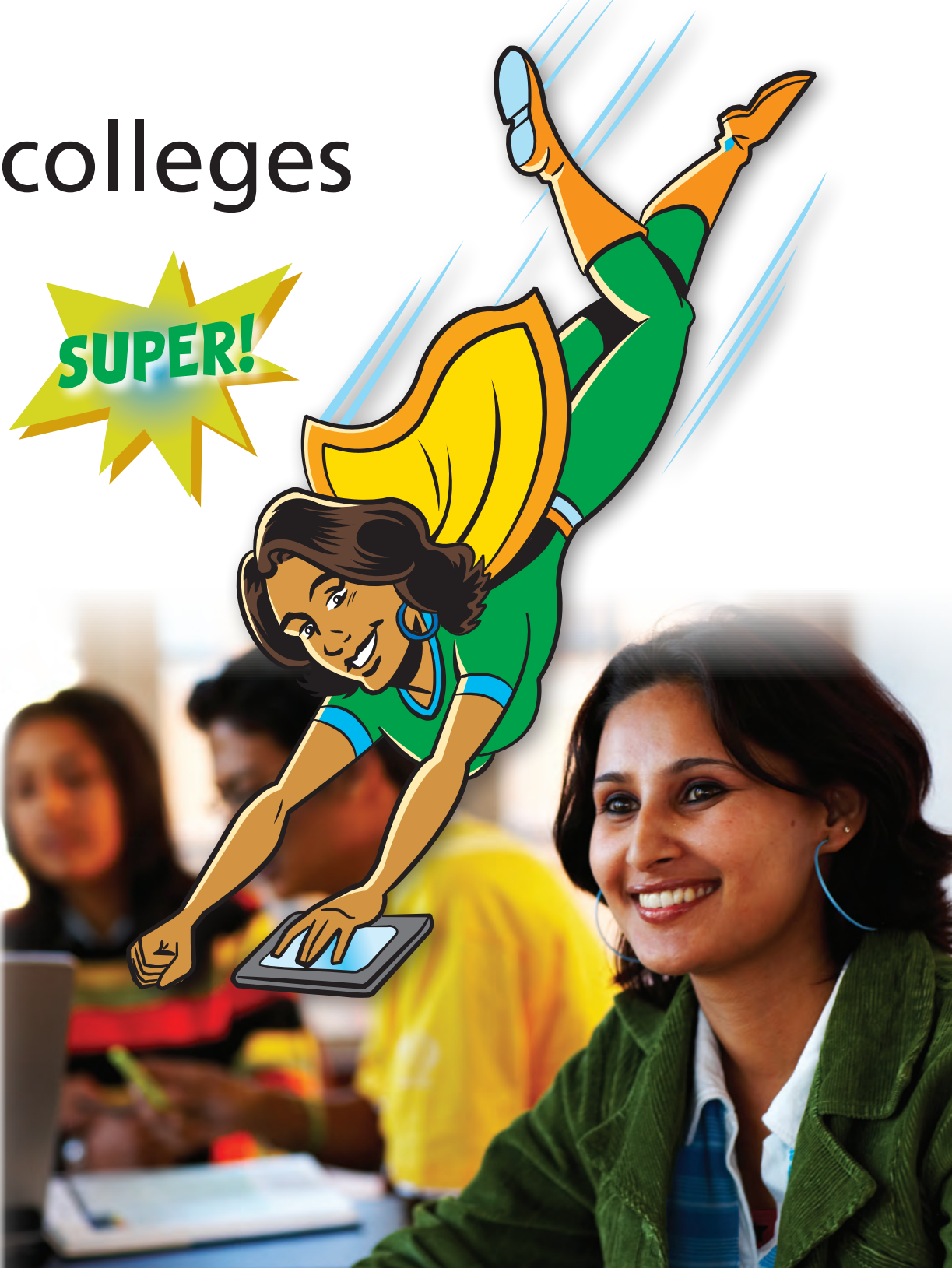
If you know which college you want to attend, you can find it in the list at the top of the page, then follow its column down on all five grid pages. The dots will show you programs offered at that campus.

Colleges are grouped by region. Programs are listed in alphabetical order, grouped in broad categories like agriculture and food industries, architecture and construction, business and management, and so on.

Not all of the system's 3,800 programs are listed. To find more programs, go to **[www.mnscu.edu](http://www.mnscu.edu)**.

If you are interested in taking courses online, go to the Minnesota Online column at the far right of each grid page. The dots show which programs are offered online. To find out more, go to **[www.mnscu.edu/online](http://www.mnscu.edu/online)**.

The state university grids begin on Page 32, where you will find undergraduate programs. Graduate programs are on Page 33.



**SUPER!**



**Some programs are offered only online. Not all of the system's 3,800 programs are listed here. To find more, go to [www.mnscu.edu](http://www.mnscu.edu).**

## AGRICULTURAL & FOOD INDUSTRIES

Agribusiness Service Technician
Agricultural Business & Production
Agricultural Science & Technology
Culinary Arts & Food Service
Farm Business Management
Floral Design
Food Processing Safety
Food Sciences
Golf Course/Turf Management
Horse Husbandry/Equine Business Management
Horticulture, Landscaping & Greenhouse
Taxidermy

## ARCHITECTURE & CONSTRUCTION

Building Inspection
Building/Property Maintenance
Cabinetmaking & Finishing Trades
Carpentry & Building Trades
Concrete/Masonry/Bricklaying
Construction Management
Drafting - Architectural
Electrician & Electrical Maintenance
Heating, Ventilation, Air Conditioning & Refrigeration
Heavy Equipment Operation
Interior Design
Ironworker
Plumbing/Pipefitting

## BUSINESS & MANAGEMENT

Accounting
Administrative Assistant & Support
Banking & Finance
Business Administration & Management
Customer Service/Call Center
Entrepreneurship
Fashion Merchandising
Hotel, Restaurant & Casino Management
Human Resources Management
Insurance
International Business
Marketing & Sales
Meeting & Event Management
Quality Improvement

[illegible]

**Some programs are offered only online. Not all of the system's 3,800 programs are listed here. To find more, go to [www.mnscu.edu](http://www.mnscu.edu).**

Business &amp; Management, continued

Real Estate/Property Management

Small Business Management

Sports Management

Travel Planner/Tourism

## EDUCATION

Education - General

Education - Instructional Technology

Educational Assistant/Paraeducator

Teaching - Early Childhood

Teaching - Elementary

Teaching - English as a Second Language

Teaching - Mathematics

Teaching - Music

Teaching - Physical Education

Teaching - Physical/Earth Science

Teaching - Special Education

## ENERGY TECHNOLOGIES & NATURAL RESOURCES

Alternative/Renewable Energy Technologies

## Electric Utility Technology

## Electrical Lineworker

Environmental &amp; Earth Sciences

Parks &amp; Recreation

## Power Generation/Distribution

Water Quality Technologies

Wilderness Management &amp; Wildland Firefighter

Wood Sciences &amp; Wood Products

## ENGINEERING & ENGINEERING TECHNOLOGIES

## Biomedical Equipment Technology

Communication System Installation/Repair

## Drafting - Electrical & Mechanical

Engineering - Chemical

Engineering - Civil &amp; Surveying

Engineering - General

Engineering Technology - Electronic

Engineering Technology - General

### Fluid Power (Hydraulic/Pneumatics)

Geographical Information Systems (GIS)

Nanotechnology

## Nondestructive Testing

Research &amp; Development

Robotics/Instrumentation Technology

Telecommunications/Wireless Technology

[illegible]



# 2-year state college programs

Some programs are offered only online. Not all of the system's 3,800 programs are listed here. To find more, go to [www.mnscu.edu](http://www.mnscu.edu).

## HEALTH

Activity Director  
Biomedical Technology/Clinical Research  
Biotechnology/Biochemistry  
Cardiovascular Technology  
Central Services Technician  
Community Health Services  
Dental Assistant  
Dental Hygienist  
Dental Office Support  
Dialysis  
EMT - Basic or First Responder  
EMT - Paramedic  
Health Information Technology  
Health Services Administration  
Health Unit Coordinator  
Health, Fitness & Sport Science  
Histotechnology  
Holistic Health & Healing  
Massage Therapy  
Medical Administrative Assistant  
Medical Assistant  
Medical Coding Specialist  
Medical Technology/Clinical Lab Science  
Medical Transcription  
Neurophysiology Technology  
Nursing  
Nursing - Assistant/Home Health Aide  
Nursing - Practical  
Nutrition & Dietetic Technology  
Occupational Safety  
Occupational Therapy Assistant  
Orthotics & Prosthetics  
Pharmacy Technology  
Phlebotomy  
Physical Therapy Assistant  
Polysomnography  
Radiologic Technology  
Respiratory Therapy  
Sonography  
Surgical Technology

	CENTRAL						METRO						NORTHEAST						NORTHWEST						SOUTHEAST						SOUTHWEST																					
	Alexandria	Anoka-Ramsey, Cambridge	Central Lakes, Brainerd	Central Lakes, Staples	Pine, Pine City	St. Cloud TCC	Anoka-Ramsey, Coon Rapids	Anoka	Century, White Bear Lake	Dakota County, Rosemount	Hennepin, Brooklyn Park	Hennepin, Eden Prairie	Inver Hills, Inver Grove Heights	Minneapolis	Normandale, Bloomington	North Hennepin, Brooklyn Park	Saint Paul	Fond du Lac, Cloquet	Lake Superior, Duluth	NE - Hibbing	NE - Itasca, Grand Rapids	NE - Mesabi Range, Eveleth	NE - Mesabi Range, Virginia	NE - Rainy River, Int'l Falls	NE - Vermilion, Ely	MN State CTC, Detroit Lakes	MN State CTC, Fergus Falls	MN State CTC, Moorhead	MN State CTC, Wadena	Northland, East Grand Forks	Northland, Thief River Falls	Northwest, Bemidji	MSC-SE Technical, Red Wing	MSC-SE Technical, Winona	Riverland, Albert Lea	Riverland, Austin	Riverland, Owatonna	Rochester	South Central, Faribault	South Central, North Mankato	Minnesota West, Canby	Minnesota West, Granite Falls	Minnesota West, Jackson	Minnesota West, Pipestone	Minnesota West, Worthington	Ridgewater, Hutchinson	Ridgewater, Willmar	MinnesotaOnline.org				
Activity Director																																																				
Biomedical Technology/Clinical Research		•					•												•																																	
Biotechnology/Biochemistry																																																				
Cardiovascular Technology						•									•																																					
Central Services Technician																																																				
Community Health Services		•					•				•	•	•	•	•																																					
Dental Assistant			•						•		•	•	•	•																																						
Dental Hygienist						•									•																																					
Dental Office Support																																																				
Dialysis																																																				
EMT - Basic or First Responder								•	•		•	•																																								
EMT - Paramedic						•																																														
Health Information Technology																																																				
Health Services Administration																																																				
Health Unit Coordinator																																																				
Health, Fitness & Sport Science	•	•					•				•							•	•		•			•																												
Histotechnology																																																				
Holistic Health & Healing		•					•																																													
Massage Therapy																																																				
Medical Administrative Assistant	•	•				•	•	•	•	•	•	•	•	•	•	•	•	•	•	•							•	•	•	•	•	•	•			•	•	•	•	•	•	•	•	•	•	•	•	•	•	•	•	
Medical Assistant			•	•			•	•	•	•	•	•																																								
Medical Coding Specialist	•																																																			
Medical Technology/Clinical Lab Science	•															•	•	•	•								•																									
Medical Transcription	•																																																			
Phlebotomy																																																				
Physical Therapy Assistant						•																																														
Polysomnography																																																				
Radiologic Technology										•																																										
Respiratory Therapy																																																				
Sonography						•																																														
Surgical Technology						•	•																																													

**Some programs are offered only online. Not all of the system's 3,800 programs are listed here. To find more, go to [www.mnscu.edu](http://www.mnscu.edu).**

American Sign Language/Interpreter
Child Care/Development
Cosmetology, Manicurist & Barbering
Counseling - Chemical Dependency
Gerontology
Human & Community Services
Mental Health Services
Occupational Skills
Translating & Interpreting

Computer Engineering Technology
Computer Networking
Computer Programming
Computer Science & Information Systems
Computer Security & Forensics/IT Auditing
Computer Software Applications
Computer Technology & Support Services
Database Technologies & Administration
Internet & Convergence Technologies
Management Information Systems
Web Design, Development & Visualization
Webmaster & Web Administration

Criminal Justice/Corrections
Criminalistics & Investigative Sciences
Fire Protection/Firefighting
Law Enforcement
Legal Administrative Assistant
Paralegal
Public Security & Emergency Management
Rescue Technician
Underwater Search & Recovery

American Indian/Native American Studies
Art/Studio Arts
Biological & Natural Sciences
Chemistry
Dance
English - Language, Literature, Writing
Film Studies
Global Studies/International Relations
Individualized & Multidisciplinary Studies
Latin American Studies

[illegible]



**Some programs are offered only online. Not all of the system's 3,800 programs are listed here. To find more, go to [www.mnscu.edu](http://www.mnscu.edu).**

*Liberal Arts & Sciences, continued*

[illegible]

# Alexandria Technical & Community College

[www.alextech.edu](http://www.alextech.edu)



**Admissions:** (320) 762-4520  
**Toll-free:** 1-888-234-1222  
**To arrange a campus visit:** 1-888-234-1222 ext. 4520

**Mailing address:** 1601 Jefferson St.  
 Alexandria, MN 56308  
**City/population:** Alexandria/11,070

**Tuition and fees (2011-2012):** \$5,169  
**FAFSA code:** 005544



## ENROLLMENT:

Total number students served ..... 4,012  
 Full-time students ..... 59.0%  
 Part-time students ..... 41.0%  
 Percent male ..... 51.8%  
 Percent female ..... 48.2%  
 Percent students of color ..... 4.0%

**DEGREES OFFERED:** Associate in Arts, Associate in Science, Associate in Applied Science, diplomas, certificates

**LARGEST PROGRAMS:** Associate in Arts, law enforcement, nursing, welding technology, diesel mechanic (partnership with Ziegler Inc., the Caterpillar dealer for Minnesota and Iowa), marine and small engine mechanic (partnership with Arctic Cat and Briggs & Stratton)

**UNIQUE PROGRAMS:** Communication art and design, computer and voice networking, concrete mason, fashion management, health and fitness specialist, hotel-restaurant management, mechatronics (combines mechanical, electronic and networking systems)

**STUDENT ACTIVITIES:** American Society of Interior Designers, Business Professionals of America, Child Development Club, Delta Epsilon Chi, intramural sports, Law Enforcement Club, National Association of Home Builders, National Kitchen and Bath Association, Phi Theta Kappa honor society, service learning, SkillsUSA, Student Senate

**HOUSING:** Alexandria Technical and Community College has no on-campus student housing, but many community rental units are within walking distance of the campus. The college provides a housing list describing rental facilities.

## HIGHLIGHTS

- Job placement rates have averaged over 90 percent for several decades.
- The college was ranked No. 8 of the top 50 community colleges in the nation by Washington Monthly magazine.
- The college is recognized as a national leader in advanced technical skills and transfer education.
- Most programs include hands-on, student-centered, experiential learning.
- The average lecture class has 20 students; the average lab has 18.
- Recognized in the Minnesota Office of Higher Education's "Minnesota Measures" for three years, Alexandria Technical and Community College has the highest percentages of public two-year colleges in Minnesota in student graduation and transfer rate.
- A rich history includes excellence in instruction, high academic expectations of students and a great number of partnerships with local, state, national and international businesses and industries.
- Many associate degrees fully transfer toward completion of bachelor's degrees at universities.

# Anoka-Ramsey Community College

[www.anokaramsey.edu](http://www.anokaramsey.edu)



**Admissions:** (763) 433-1100  
**Toll-free:** 1-866-433-5590  
**To arrange a campus visit:** (763) 433-1300

**Mailing address:** 11200 Mississippi Blvd. N.W.  
 Coon Rapids, MN 55433  
**City/population:** Cambridge/8,111;  
 Coon Rapids/61,476

**Tuition and fees (2011-2012):** \$4,738  
**FAFSA code:** 002332



## ENROLLMENT:

Total number students served ..... 12,578  
 Full-time students ..... 43.4%  
 Part-time students ..... 56.6%  
 Percent male ..... 40.0%  
 Percent female ..... 60.0%  
 Percent students of color ..... 13.0%

**DEGREES OFFERED:** Associate in Arts, Associate in Fine Arts, Associate in Science, Associate in Applied Science, certificates

**LARGEST PROGRAMS:** Liberal arts and sciences, associate degree in business, nursing, business with marketing and management emphasis, computer and information sciences

**UNIQUE PROGRAMS:** Fine arts (art, music and theater), biomedical technology, biological sciences, environmental science, integrative health and healing, physical therapist assistant, engineering; courses in glass-blowing, Chinese language study abroad, American Sign Language

**INTERCOLLEGIATE SPORTS:** Men's basketball, baseball, soccer; women's basketball (NJCAA 2011 National Champions), fastpitch softball, soccer, volleyball

**STUDENT ACTIVITIES:** Concert choir, chamber singers, concert band, jazz band, theater, student newspaper, Phi Theta Kappa honor society, academic clubs, intramural sports, Christian Fellowship, Muslim Association, Multicultural Club

**HOUSING:** The college has no on-campus student housing, but rental units are available within walking distance.

## HIGHLIGHTS

Anoka-Ramsey Community College offers unique campuses on the Rum River in Cambridge and the Mississippi River in Coon Rapids. Call (763) 433-1300 or visit [www.anokaramsey.edu](http://www.anokaramsey.edu) for a tour.

Anoka-Ramsey offers:

- The most affordable tuition and fees among Minnesota state colleges and universities, with free tutoring, personal attention, small class sizes, and dedicated faculty and staff. Ask about scholarships and financial aid packages.
- Advanced degrees through other system institutions on its campuses, including bachelor's degrees in business administration, FastTrack license for secondary teacher certification, nursing, special education, teacher education K-8 license, DLiTE program (undergraduate major in teaching).
- More than 100 online courses and complete online programs: Associate in Arts degree, Associate in Science degrees in accounting and business; certificates in business computer applications and business generalist.
- 13 off-campus locations in Becker, Blaine, Columbia Heights, Elk River, Forest Lake, Fridley, Lino Lakes, Monticello, New Brighton, North Branch High School and Primary School, Saint Francis, YMCA-Emma B. Howe (free day care), Zimmerman

Anoka-Ramsey Community College is aligned with Anoka Technical College.



# Anoka Technical College

[www.anokatech.edu](http://www.anokatech.edu)



**Admissions:** (763) 576-4850

**To arrange a campus visit:** (763) 576-4850

**Mailing address:** 1355 W. Highway 10

Anoka, MN 55303

**City/population:** Anoka/17,142

**Tuition and fees (2011-2012):** \$5,506

**FAFSA code:** 007350



## ENROLLMENT:

Total number students served ..... 3,643  
Full-time students ..... 46.0%  
Part-time students ..... 54.0%  
Percent male ..... 38.8%  
Percent female ..... 61.2%  
Percent students of color ..... 16.1%

**DEGREES OFFERED:** Associate in Applied Science, diplomas, certificates

**LARGEST PROGRAMS:** Practical nursing, information technology, medical assistant, surgical technology, machine trades, occupational therapy assistant

**UNIQUE PROGRAMS:** Broadcast captioning, judicial reporting, occupational therapy assistant, golf course grounds management, health information technology, multimedia and gaming, information technology

**STUDENT ACTIVITIES:** Student Senate, Vocational Industrial Clubs of America, Phi Theta Kappa honor society, multicultural student organizations, veterans club, book club

**HOUSING:** Anoka Technical College does not have on-campus student housing, but roommate and housing lists are available. The college is accessible by Metro Transit and the Northstar Commuter Rail.

## HIGHLIGHTS

- New Student Success Center in a centralized location offers coaches, counselors, tutoring, mentoring, job placement and more for student success.
- Located just outside of the Twin Cities, the college has more than 35 career programs that respond to today's contemporary and traditional technical industry needs.
- Many programs can be completed in two years or less.
- Teaching method focuses on hands-on learning and doing what you learn.
- The college has transfer agreements with many four-year institutions, including Bemidji State University; Concordia College; Metropolitan State University; Minnesota State University, Mankato; Minnesota State University Moorhead; St. Cloud State University; and University of Minnesota, Crookston.
- Small class sizes, with a 22-to-1 student-teacher ratio, include hands-on, lecture and group learning experiences.
- New science lab opened in 2009.
- Many classes offered online.
- Modern classrooms equipped with latest equipment and technology.
- Full- and part-time student scholarships and financial aid available to those who qualify.
- Professional training and continuing education classes provided by the Anoka Technical College Corporate Center, located on campus.
- Campus remodeling in 2011 includes new math and writing lab.
- Student food shelf on campus established in 2010.

Anoka Technical College is aligned with Anoka-Ramsey Community College.

# Central Lakes College

[www.clcmn.edu](http://www.clcmn.edu)



**Admissions:** (218) 855-8037

**Toll-free:** 1-800-933-0346

**To arrange a campus visit:** (218) 855-8037

**Mailing address:** 501 W. College Drive

Brainerd, MN 56401

**City/population:** Brainerd/13,590; Staples/2,981

**Tuition and fees (2011-2012):** \$5,209

**FAFSA code:** 002339



## ENROLLMENT:

Total number students served ..... 6,062  
Full-time students ..... 55.9%  
Part-time students ..... 44.1%  
Percent male ..... 43.5%  
Percent female ..... 56.5%  
Percent students of color ..... 4.7%

**DEGREES OFFERED:** Associate in Arts, Associate in Science, Associate in Applied Science, diplomas, certificates

**LARGEST PROGRAMS:** Liberal arts for transfer to a four-year school; nursing; heavy equipment operation and maintenance; criminal justice; computer technology, network and support

**UNIQUE PROGRAMS:** Videography production, child development care and guidance, American Sign Language, enology, viticulture, emerging digital technologies, honors Associate in Arts, Associate in Fine Arts in theater performance

**INTERCOLLEGIATE SPORTS:** Men's football, basketball, baseball, golf; women's volleyball, basketball, softball, golf

**STUDENT ACTIVITIES:** Music, drama, visual arts, Student Senate, International Club, Diversity Leadership Council, Phi Theta Kappa honor society, program-related clubs, intramural sports

**HOUSING:** Student housing is adjacent to campus or within walking distance.

## HIGHLIGHTS

- Preferred – One of the fastest-growing two-year colleges in the nation, according to Community College Week.
- Affordable – Keeps a handle on costs, awards more than \$10 million in financial aid to 70 percent of students annually.
- Location – Offers outdoor enjoyment and easily reached from anywhere in the state.
- Comfort – Campuses that are modern, safe and clean.
- Variety – More than 60 transfer and career programs to start you on a four-year degree or path to program-related employment.
- Friendly – Caring instructors and support staff who put students first.
- Support – Mentors, tutors, advisors and counselors, all working for you.
- Innovation – EZ Enrollment, honors associate degree, Associate in Fine Arts in theater performance, "green" associate degree with hundreds of online classes.
- Visionary – GPS LifePlan, an electronic tool to connect educational goals to career plans.
- Partners – College and university agreements for credit transfer to higher degrees.
- Full college experience – Cultural arts, athletics, student government, community service and business internships.
- Effective education – Places 90 percent of graduates in jobs related to their technical and career education.
- Diverse – Values international and multicultural community for global participation.

# Century College

[www.century.edu](http://www.century.edu)



**Admissions:** (651) 773-1700  
**Toll-free:** 1-800-228-1978  
**To arrange a campus visit:** (651) 773-1700

**Mailing address:** 3300 Century Ave. N.  
 White Bear Lake, MN 55110  
**City/population:** White Bear Lake/23,797

**Tuition and fees (2011-2012):** \$5,201  
**FAFSA code:** 010546



## ENROLLMENT:

Total number students served..... 14,766  
 Full-time students .....46.0%  
 Part-time students .....54.0%  
 Percent male .....45.2%  
 Percent female .....54.8%  
 Percent students of color .....30.3%

**DEGREES OFFERED:** Associate in Arts, Associate in Fine Arts, Associate in Science, Associate in Applied Science, diplomas, certificates

**LARGEST PROGRAMS:** Courses such as English and mathematics that transfer to a four-year college, English for Speakers of Other Languages, nursing, emergency medical services and paramedics, computer science and technology

**UNIQUE PROGRAMS:** Orthotics/prosthetics, women and gender studies, pre-engineering, visual communications technologies, kitchen and bath design, sports facilities management, paraeducator

**INTERCOLLEGIATE SPORTS:** Men's and women's golf, soccer

**STUDENT ACTIVITIES:** Phi Theta Kappa honor society, chamber orchestra, concert band, choir, Asian Student Association, Creative Arts Alliance, drama club, Q and S Club, Student Senate, Wood Duck Celebration, intramural sports, debate team, math team

**HOUSING:** The college has no on-campus housing, but rental units are within walking distance.

## HIGHLIGHTS

Century College has a beautiful new Student Center with a stage and game room, and a new Science and Library Building that features built-in window seats for studying and lounging, laptop computer checkout, wireless capacity, a fireplace and more than 45,000 books. Other features include state-of-the-art classrooms and nine science labs.

As both a community college and a technical college, Century also offers:

- GPS LifePlan, an electronic tool to connect educational goals to future career plans.
- Award-winning faculty members.
- Excellent programs in areas such as emergency medical services, law enforcement, computers, interior design, horticulture and dental hygiene.
- A Phi Theta Kappa honor society named one of the top 100 chapters in the nation.
- An Associate in Fine Arts in music degree.
- Nearly 40 student clubs, men's and women's golf and soccer teams, intramural activities, new fitness center, and music and theater programs.
- A renowned service learning program.
- The Wood Duck Trail for walking and running.
- A multicultural center where international students from more than 45 countries meet to plan activities, socialize and study.
- The Fab Lab, where students use fabrication tools and software to build just about anything.
- A vibrant arts scene with orchestra, choir and theater programs.

# Dakota County Technical College

[www.dctc.edu](http://www.dctc.edu)



**Admissions:** (651) 423-8000  
**Toll-free:** 1-877-937-3282  
**To arrange a campus visit:** (651) 423-8000

**Mailing address:** 1300 145th St. E.  
 Rosemount, MN 55068  
**City/population:** Rosemount/21,874

**Tuition and fees (2011-2012):** \$5,521  
**FAFSA code:** 010402



## ENROLLMENT:

Total number students served ..... 5,592  
 Full-time students .....45.9%  
 Part-time students .....54.1%  
 Percent male .....59.3%  
 Percent female .....40.7%  
 Percent students of color .....13.5%

**DEGREES OFFERED:** Associate in Science, Associate in Applied Science, diplomas, certificates

**LARGEST PROGRAMS:** Business management, practical nursing, graphic design, accounting, information systems management

**UNIQUE PROGRAMS:** Interior design, nanoscience technology, wood finishing technology, railroad conductor technology, civil engineering technology

**INTERCOLLEGIATE SPORTS:** Men's soccer, baseball, basketball; women's soccer, softball, volleyball

**STUDENT ACTIVITIES:** More than 20 student organizations, including SkillsUSA, Gay Straight Alliance, Veterans Club, Chess Club, Business Professionals of America, student government and a variety of other student and professional organizations

**HOUSING:** The college has no on-campus housing, but offers a list of housing options at [dctc.edu/go/housing](http://dctc.edu/go/housing).

## HIGHLIGHTS

- View videos of campus life, programs and services to get a better sense of Dakota County Technical College's campus and students at [dctc.edu/videos](http://dctc.edu/videos).
- Socialize with current students, faculty, staff and alumni at [facebook.com/dakotattech](https://facebook.com/dakotattech) or [twitter.com/dctc](https://twitter.com/dctc).
- Visit campus any Tuesday from 12:45 to 2:30 p.m. to see why Dakota County Technical College has a reputation for being one of the friendliest campuses around.
- Explore more than 300 classes offered online or in a hybrid format that combines online and classroom learning.
- Work with instructors to learn more about options such as credit for life experience, short-term classes and programs, an individualized studies degree or other flexible scheduling options.
- Enjoy small class sizes, opportunities for one-on-one advising and assistance from instructors, and a student environment that lets you get to know your fellow classmates.
- Take part in hands-on labs and real-world experiences that prepare you to take on a career in your area of study.
- Learn using industry-standard equipment and up-to-date curricula developed through strong relationships with business and industry.
- Get involved in the community through service learning activities built in to program curriculum, or take part in student life activities.



# Fond du Lac Tribal & Community College

[www.fdlccc.edu](http://www.fdlccc.edu)



**Admissions:** (218) 879-0808  
**Toll-free:** 1-800-657-3712  
**To arrange a campus visit:** (218) 879-0808

**Mailing address:** 2101 14th St.  
 Cloquet, MN 55720  
**City/population:** Cloquet/12,124

**Tuition and fees (2011-2012):** \$5,036  
**FAFSA code:** 031291



## ENROLLMENT:

Total number students served ..... 2,842  
 Full-time students ..... 42.7%  
 Part-time students ..... 57.3%  
 Percent male ..... 45.3%  
 Percent female ..... 54.7%  
 Percent students of color ..... 19.2%

**DEGREES OFFERED:** Associate in Arts, Associate in Fine Arts, Associate in Applied Science, Associate in Science, certificates

**LARGEST PROGRAMS:** Liberal arts and transfer programs, law enforcement, nursing, human services, environmental science

**UNIQUE PROGRAMS:** Geospatial technologies, American Indian studies, law enforcement skills, environmental science, clean energy technology

**INTERCOLLEGIATE SPORTS:** Men's football, basketball; women's softball, volleyball, basketball

**STUDENT ACTIVITIES:** Approximately 12 student organizations and activities, including intramural sports, Law Enforcement Club, Phi Theta Kappa honor society, American Indian Business Leaders, Student Senate, Anishinaabe Student Congress, Environmental Science and Outdoor Recreation Club, Human Services Club, American Indian Science and Engineering Society, Geographic Information Services Users Club

**HOUSING:** Spectacular residence hall owned and operated by the college features large apartment-style units with kitchens and private bathrooms.

Units are furnished and have high-speed Internet access, air conditioning and cable television. Competitive rental rates are an excellent value.

## HIGHLIGHTS

Fond du Lac Tribal and Community College brings together a tribal college and a state community college in partnership. The beautiful campus setting and buildings are unlike any other college campus.

- Reputation for friendly service and a comfortable campus atmosphere.
- Convenient daytime, evening, weekend and online courses.
- Super-fast wireless network on campus for laptop and hand-held device users.
- New cultural recreation center and physical education space, plus law enforcement and nursing training areas opened in 2008.
- High rate of law enforcement graduates pass the Minnesota Peace Officers Standards and Training Board exam.
- Students learn from award-winning instructors and friendly staff.
- 2,000-acre Environmental Study Area is only five minutes from campus.
- Classes usually have 20 or fewer students.
- Ruth A. Myers Library/Ojibwe Archives was expanded in 2008.
- Well-equipped science labs and computer labs.
- Fine arts opportunities in visual art, music and theater courses.
- Emphasis on uniting cultures and creating individual and community awareness of each other.
- Unique transfer programs with four-year colleges make it easy to transfer credits.

# Hennepin Technical College

[www.hennepintech.edu](http://www.hennepintech.edu)



**Admissions:** (952) 995-1300  
**Toll-free:** 1-800-345-4655  
**To arrange a campus visit:** (952) 995-1300

**Mailing address:** 9000 Brooklyn Blvd.  
 Brooklyn Park, MN 55445  
**City/population:** Brooklyn Park/75,781;  
 Eden Prairie/60,797

**Tuition and fees (2011-2012):** \$4,835  
**FAFSA code:** 010491



## ENROLLMENT:

Total number students served ..... 9,159  
 Full-time students ..... 39.0%  
 Part-time students ..... 61.0%  
 Percent male ..... 57.7%  
 Percent female ..... 42.3%  
 Percent students of color ..... 30.3%

**DEGREES OFFERED:** Associate in Science, Associate in Applied Science, diplomas, certificates

**LARGEST PROGRAMS:** Information technology, practical nursing, fire protection, automotive technology, machine trades

**UNIQUE PROGRAMS:** Audio production, automation robotics engineering technology, fire protection, floral design, Ford ASSET (Automotive Student Services Educational Training), marine and motor sports, plastics manufacturing technology, printing and prepress technology, professional photography, public works

**STUDENT ACTIVITIES:** Student government, clubs and professional organizations, SkillsUSA

**HOUSING:** The college does not have on-campus student housing. Rental units are close to each campus.

## HIGHLIGHTS

- Hennepin Technical College is the largest stand-alone technical college in Minnesota and offers more than 50 career and technical programs.
- Last year, the college awarded more than \$200,000 dollars in scholarships.
- Hennepin Technical College is a great value; the college has one of the lowest tuition rates in the state.
- The college has many transfer agreements with four-year universities allowing students more access and opportunities.
- Small class sizes with a 25-to-1 student-faculty ratio.
- Labs use cutting-edge technology and meet all required industry standards.
- The college offers many short-term programs that can be completed in as few as 16 weeks.
- New programs and awards are pharmacy technology, community paramedic, medical manufacturing device technician, nursing station technician, safety coordinator and sustainability carpentry.
- In fall 2010, the college opened a new law enforcement and criminal justice educational center in partnership with Metropolitan State University.
- More than 300 industry advisory members work with the college to ensure the curriculum meets industry standards.
- Faculty has both industry and teaching experience.
- The college has two convenient locations located close to shopping, dining and outdoor adventure.

# Inver Hills Community College

[www.inverhills.edu](http://www.inverhills.edu)



**Admissions:** (651) 450-3000  
**To arrange a campus visit:** (651) 450-3000

**Mailing address:** 2500 80th St. E.  
 Inver Grove Heights, MN 55076  
**City/population:** Inver Grove Heights/33,880

**Tuition and fees (2011-2012):** \$5,152  
**FAFSA code:** 006935



## ENROLLMENT:

Total number students served ..... 9,762  
 Full-time students ..... 39.3%  
 Part-time students ..... 60.7%  
 Percent male ..... 40.4%  
 Percent female ..... 59.6%  
 Percent students of color ..... 20.8%

**DEGREES OFFERED:** Associate in Arts, Associate in Fine Arts, Associate in Science, Associate in Applied Science, certificates

**LARGEST PROGRAMS:** Associate in Arts, contemporary business, law enforcement, paralegal, nursing

**UNIQUE PROGRAMS:** Cisco network technology and security, emergency medical service (paramedic), adult accelerated degree option, interdisciplinary learning communities, online Associate in Arts degree

**STUDENT ACTIVITIES:** Phi Theta Kappa honor society; choir; theater; nationally recognized Student Senate; intramural and club sports; recreation and fitness programs; more than 40 student clubs based on academic, career, political and cultural interests

**HOUSING:** Inver Hills has no on-campus student housing. Nearby rental complexes offer convenient and high-quality housing alternatives.

## HIGHLIGHTS

- Conveniently located 10 minutes south of downtown St. Paul and 10 minutes east of the Mall of America, the campus is one of the most scenic college campuses in the Twin Cities.
- More than 50 two-year degree options prepare students for employment upon graduation or permit them to continue their education through transfer to a four-year institution.
- Students may pursue an Associate in Arts degree with an emphasis, which allows for greater breadth of knowledge in a particular subject area to prepare for a specific major at a four-year college or university.
- Transfer agreements with state universities and many private colleges and universities, and a comprehensive selection of liberal arts and general education courses allow students to complete the first two years of most bachelor's degree programs.
- Nationally recognized for Adult Success through Accelerated Programs (known as ASAP), Inver Hills was the first two-year college in the nation to be designated an Adult Friendly Learning Institution by the Council for Adult Experiential Learning.
- Many flexible options are available with several courses and even complete degrees offered online, accelerated courses and degrees, and several community-based class sites.
- Inver Hills participates in three Centers of Excellence: Access and Opportunity, which supports students in groups traditionally underrepresented in higher education; Advance IT Minnesota, the center for strategic and information technology security; and HealthForce Minnesota, dedicated to transforming health care education.

# Lake Superior College

[www.lsc.edu](http://www.lsc.edu)



**Admissions:** (218) 733-7601  
**Toll-free:** 1-800-432-2884  
**To arrange a campus visit:** (218) 733-7601

**Mailing address:** 2101 Trinity Road  
 Duluth, MN 55811  
**City/population:** Duluth/86,265

**Tuition and fees (2011-2012):** \$4,872  
**FAFSA code:** 005757



## ENROLLMENT:

Total number students served ..... 8,685  
 Full-time students ..... 46.3%  
 Part-time students ..... 53.7%  
 Percent male ..... 46.4%  
 Percent female ..... 53.6%  
 Percent students of color ..... 7.4%

**DEGREES OFFERED:** Associate in Arts, Associate in Fine Arts, Associate in Applied Science, Associate in Science, diplomas, certificates

**LARGEST PROGRAMS:** Associate in Arts degree, practical nursing, radiologic technology, associate degree nurse, dental hygiene, fire technology and administration

**UNIQUE PROGRAMS:** Professional pilot, paralegal, dialysis patient care technician, sonography

**STUDENT ACTIVITIES:** Student Senate and more than 40 clubs, including art and ceramics, computer gaming, snowboarding and skiing, curling, chess, intercultural, Spanish, veterans, Phi Theta Kappa honor society

**HOUSING:** Lake Superior College has no on-campus housing but provides information to students seeking housing in the community.

## HIGHLIGHTS

- Lake Superior College is situated on a wooded campus that overlooks Duluth's breathtaking Lake Superior harbor and St. Louis River valley. It features award-winning architecture, comfortable classrooms, and beautiful study and library facilities. The campus has a natural setting that includes an urban forest, award-winning nature trails, disc golf course and a designated trout stream. A \$12.1 million Health and Science Center is scheduled for completion in January 2012.
- Lake Superior College offers more than 80 technical majors, programs for transfer, continuing education and customized training for business and industry.
  - A long-time provider of online education, the college operates one of the largest and most comprehensive online instructional programs in the Minnesota State Colleges and Universities system, serving more than 2,200 students and offering more than 165 course sections online. More than 25 percent of the college's credits are provided online. Online programs include dialysis patient care, accounting, business administration, network administration and an Associate in Arts transfer degree.
  - The college offers study abroad programs in Italy and Mexico.
  - The college's Emergency Response Training Center provides world-class training for emergency response professionals, including firefighters and emergency medical technicians.
  - The college provides dental hygiene and physical therapy services to students and uninsured residents of the region through faculty-supervised student clinics.



# Minneapolis Community & Technical College

[www.minneapolis.edu](http://www.minneapolis.edu)



**Admissions:** (612) 659-6200  
**Toll-free:** 1-800-247-0911  
**To arrange a campus visit:** (612) 659-6200

**Mailing address:** 1501 Hennepin Ave.  
 Minneapolis, MN 55403  
**City/population:** Minneapolis/382,578

**Tuition and fees (2011-2012):** \$5,012  
**FAFSA code:** 002362



## ENROLLMENT:

Total number students served ..... 14,932  
 Full-time students ..... 39.7%  
 Part-time students ..... 60.3%  
 Percent male ..... 47.1%  
 Percent female ..... 52.9%  
 Percent students of color ..... 46.9%

**DEGREES OFFERED:** Associate in Arts, Associate in Fine Arts, Associate in Applied Science, Associate in Science, diplomas, certificates

**LARGEST PROGRAMS:** Liberal arts, nursing careers, business management, human services

**UNIQUE PROGRAMS:** Air traffic control, American Indian studies, apparel technologies, biotechnology, cinema studies and production, community development, computer forensics, electroneurodiagnostic technology, global studies, homeland security, polysomnography, women's studies

**STUDENT ACTIVITIES:** Forty-three groups, including student government; Phi Theta Kappa honor society; theater productions, music ensembles and other fine arts clubs; academic interest clubs focused on addiction counseling, design, math, media generation, nursing, science and trades skills; special interest clubs focused on ethnic student groups, environmental issues, soccer and student newspaper

**HOUSING:** The college has no on-campus student housing, but many rental units are within walking distance of the campus. The college helps students find rental housing.

## HIGHLIGHTS

Minneapolis Community and Technical College is conveniently located downtown with easy access to jobs, internships, city life, restaurants, entertainment venues and cultural activities just steps away. The college provides a welcoming environment for students of all ages and at all stages in their professional development. With 130 programs in liberal arts, career and technical fields, the college offers an array of academic and career choices. Classes are offered days, evenings, weekends and online. The beautiful campus includes a state-of-the-art library, science center, new culinary kitchen and dining room, new Boynton Health Service clinic and new outdoor plaza connected to Loring Park.

- Knowledgeable, award-winning faculty members committed to student success.
- Students from around the world who represent a range of ages and backgrounds.
- Small class sizes to connect with faculty and classmates.
- State-of-the-art technical, science and world language labs.
- Nationally accredited programs in high-demand fields.
- New Associate in Arts degree program with emphasis in philosophy.
- A variety of student support services, including career services, multicultural student services, disability services, Veterans Center and Learning Center.
- Informational sessions available at 5 p.m. most Mondays and noon most Thursdays in the Student Resources Center.

# Minnesota State College – Southeast Technical

[www.southeastmn.edu](http://www.southeastmn.edu)



**Admissions:** 1-877-853-8324  
**Toll-free:** 1-877-853-8324  
**To arrange a campus visit:** 1-877-853-8324

**Mailing address:** 1250 Homer Road,  
 Winona, MN 55987  
**City/population:** Red Wing/16,459; Winona/27,592

**Tuition and fees (2011-2012):** \$5,432  
**FAFSA code:** 002393



## ENROLLMENT:

Total number students served ..... 3,433  
 Full-time students ..... 60.6%  
 Part-time students ..... 39.4%  
 Percent male ..... 39.2%  
 Percent female ..... 60.8%  
 Percent students of color ..... 9.7%

**DEGREES OFFERED:** Associate in Applied Science, Associate in Science, diplomas, certificates

**LARGEST PROGRAMS:** Nursing, individualized studies, introduction to health care, administrative careers, industrial technology

**UNIQUE PROGRAMS:** Musical instrument repair and construction, guitar building and repair, band instrument repair, violin repair, massage therapy, nanotechnology, jewelry manufacturing and repair

**STUDENT ACTIVITIES:** Business Professionals of America, Student Senate, Cultural Diversity, SkillsUSA, Distributive Education Clubs of America, Student Music Association, Phi Theta Kappa honor society

**HOUSING:** The college has no on-campus housing, but numerous rental units are available. Privately owned dorm-style housing is available close to the campuses.

## HIGHLIGHTS

- Minnesota State College – Southeast Technical educates for employment, offering more than 80 programs in six major fields, including business and office, health and human services, liberal arts and sciences, musical instrument and creative arts, sales and management, technical, trade and industrial.
- Both the Winona and Red Wing campuses offer intimate learning environments where instructors know students by name.
- Learn from the best. Instructors are experts in their fields and eager to train the next generation.
- Get your hands dirty. Many courses are taught in fully operational clinics and labs that simulate real-world job settings.
- You can complete approved general education courses at an affordable price and transfer to other colleges and universities through the Minnesota Transfer Curriculum.
- Become a registered nurse through a two-year associate degree program at either the Winona or Red Wing campus.
- 94 percent of the college's graduates find jobs in their chosen fields. Area employers specifically seek out Southeast Technical grads.
- Trade and industrial majors include automotive; carpentry; machine tool and die; truck driving; and heating, ventilation, air conditioning and refrigeration.
- Technical majors include drafting, electronics, computer programming, and networking with Cisco and Microsoft certification.
- Day, evening and online classes offer flexibility for nontraditional students.

# Minnesota State Community & Technical College

[www.minnesota.edu](http://www.minnesota.edu)



**Admissions:** 1-877-450-3322  
**Toll-free:** 1-877-450-3322  
**To arrange a campus visit:** 1-877-450-3322

**Mailing address:** 1414 College Way  
 Fergus Falls, MN 56537  
**City/population:** Detroit Lakes/8,569; Fergus Falls/13,138;  
 Moorhead area/143,569; Wadena/4,088

**Tuition and fees (2011-2012):** \$5,166  
**FAFSA code:** 005541



## ENROLLMENT:

Total number students served ..... 9,219  
 Full-time students ..... 51.6%  
 Part-time students ..... 48.4%  
 Percent male ..... 40.2%  
 Percent female ..... 59.8%  
 Percent students of color ..... 9.4%

**DEGREES OFFERED:** Associate in Arts, Associate in Fine Arts, Associate in Science, Associate in Applied Science, diplomas, certificates

**LARGEST PROGRAMS:** Liberal arts transfer, nursing, business, radiologic technology, computer-related degree programs

**UNIQUE PROGRAMS:** Electrical line worker, equine science, nanoscience technology, power sports technology, sustainable food production, American Sign Language, entrepreneurship, medical laboratory technician

**INTERCOLLEGIATE SPORTS:** NJCAA Division III men's football, basketball, golf, baseball; women's volleyball, golf, basketball, softball

**STUDENT ACTIVITIES:** Music, art and drama; student government; student and professional organizations, including Business Professionals of America and SkillsUSA; honor societies; intramural sports; Student Ambassadors

**HOUSING:** All four campus communities have off-campus rental units available. Fergus Falls has apartment-style campus housing with meal plan options.

## HIGHLIGHTS

Minnesota State Community and Technical College offers more than 120 career and liberal arts programs at locations in the heart of Minnesota's beautiful lakes country and the Fargo-Moorhead metropolitan area.

- Options – Twenty-five online majors and hundreds of online courses lead to degrees, diplomas and certificates. The Associate of Arts degree is offered on all campuses and online and transfers easily toward a bachelor's degree.
- Experience – Students enjoy a rich college experience through a wide array of student life activities and travel abroad programs, an opportunity often available only on four-year campuses.
- Support – The college ranks among the top three two-year Minnesota colleges in fundraising and has awarded \$207,000 in scholarships for 2011-2012.
- Focus – Student-centered education, with small class sizes, personal instruction and hands-on learning.
- Partnerships – Community partnerships provide on-the-job experience so students see career options early in their college life, rather than in the final years of a degree program.
- Connections – Nearly 750 industry and business representatives serve on advisory boards, ensuring curriculum meets industry standards.
- Innovation – Business and Entrepreneurial Services assists new or aspiring business owners.
- Welcome – Questions answered during a live chat from 10 a.m. to 7 p.m. Monday through Friday at [www.minnesota.edu](http://www.minnesota.edu). Campus tours are offered Mondays, Wednesdays and Fridays at 10 a.m. and 2 p.m.

# Minnesota West Community & Technical College

[www.mnwest.edu](http://www.mnwest.edu)



**Admissions:** (507) 825-6800 ext. 6811  
**Toll-free:** 1-800-658-2330 ext. 6811  
**To arrange a campus visit:** 1-800-658-2330 ext. 6811

**Mailing address:** 1314 N. Hiawatha Ave.  
 Pipestone, MN 56164  
**City/population:** Canby/1,795; Granite Falls/2,897;  
 Jackson/3,299; Pipestone/4,317; Worthington/12,764

**Tuition and fees (2011-2012):** \$5,422  
**FAFSA code:** 005263



## ENROLLMENT:

Total number students served ..... 5,068  
 Full-time students ..... 47.7%  
 Part-time students ..... 52.3%  
 Percent male ..... 45.7%  
 Percent female ..... 54.3%  
 Percent students of color ..... 9.9%

**DEGREES OFFERED:** Associate in Arts, Associate in Science, Associate in Applied Science, diplomas, certificates

**LARGEST PROGRAMS:** Liberal arts and sciences transfer, nursing, wind energy and renewable energy, administrative support careers

**UNIQUE PROGRAMS:** Agriculture, biotechnology lab technician, biofuels technology, energy technical specialist, power sports, wind energy technology, powerline technology, online Associate in Arts degree

**INTERCOLLEGIATE SPORTS:** NJCAA Division III; men's baseball, basketball, football, golf, wrestling; women's basketball, golf, softball, volleyball

**STUDENT ACTIVITIES:** Student government, student and professional organizations, Phi Theta Kappa honor society, Business Professionals of America, SkillsUSA, intramural sports

**HOUSING:** Student housing is available at the Canby campus, and private apartment arrangements are available at all locations. The college provides students with a list of rental housing.

## HIGHLIGHTS

Minnesota West Community and Technical College has five campuses and four learning centers in beautiful southwest Minnesota. Thousands of wind turbines dot the landscape along the Buffalo Ridge, which runs through Minnesota West's service area. Minnesota West is a national leader in renewable and sustainable energy programs. The college offers more than 60 majors in technical and liberal arts areas.

- Five southwest Minnesota campus locations: Canby, Granite Falls, Jackson, Pipestone and Worthington. Learning centers in Fairmont, Luverne, Marshall and Redwood Falls.
- State leader in online, distance delivery and technology.
- First of the Minnesota State Colleges and Universities to erect an on-campus wind tower used for both learning and power generation.
- Leader in allied health programming.
- The college is accredited by the Higher Learning Commission of the North Central Association of Colleges and Schools.
- Small class sizes allow for personal assistance with instructors and opportunities for getting to know your classmates.
- Numerous transfer agreements with state and private colleges and universities allow for easy transition to the next step.
- Learn more about the college through Facebook at [facebook.com/minnesotawest](https://facebook.com/minnesotawest).

# Normandale Community College

[www.normandale.edu](http://www.normandale.edu)



**Admissions:** (952) 358-8201  
**Toll-free:** 1-866-880-8740  
**To arrange a campus visit:** (952) 358-8201

**Mailing address:** 9700 France Ave. S.  
Bloomington, MN 55431-4399  
**City/population:** Bloomington/82,893

**Tuition and fees (2011-2012):** \$5,253  
**FAFSA code:** 007954



## ENROLLMENT:

Total number students served..... 15,113  
Full-time students .....47.1%  
Part-time students .....52.9%  
Percent male..... 44.8%  
Percent female ..... 55.2%  
Percent students of color .....25.3%

**DEGREES OFFERED:** Associate in Arts, Associate in Fine Arts, Associate in Science, Associate in Applied Science, certificates

**LARGEST PROGRAMS:** Liberal arts transfer, business marketing and management, science and engineering, nursing, teacher education

**UNIQUE PROGRAMS:** Oral health practitioner collaboration with Metropolitan State University; Associate of Fine Arts degrees in music, theater, art and creative writing; nanotechnology; criminal justice; teacher education collaboration with Minnesota State University, Mankato; engineering foundations; informatics for health care; dental hygiene; food science; dietetic technology; radiologic technology; hospitality management; nationally accredited music, theater, art and business programs

**STUDENT ACTIVITIES:** Student government, Normandale Programming Board, The Lions' Roar student newspaper, Phi Theta Kappa honor society, service learning, recreational sports, outdoor recreation, leadership development, concert band, concert choir, theater, student and professional organizations, special interest and culture-based student clubs and more

**HOUSING:** Normandale does not offer student housing. A list of off-campus rental housing is available at the Information Center in the foyer of the College Services building. Some rental units are available within walking distance of the campus.

## HIGHLIGHTS

Normandale Community College is located at 98th Street and France Avenue South in Bloomington on a wooded 90-acre site just 1.5 miles south of Interstate 494.

- More than 15,000 students from diverse backgrounds attend classes at the college each year, making it one of Minnesota's largest community colleges.
- The college prepares students for full participation in diverse communities, creates pathways to other college programs and builds community connections. Normandale is committed to quality, affordability, student access and success.
- Normandale offers accredited music, theater, art and business programs – rare among two-year colleges in Minnesota and elsewhere.
- Joint programs with Fairview-University Hospital and Clinic; Minnesota State University, Mankato; Metropolitan State University; and the University of Minnesota provide students additional opportunities to reach their career goals.
- Support services are provided for second language and developmental education students as well as students with disabilities.
- The college provides a community dental clinic that accepts public assistance and offers dental services on a sliding scale for those living in southwest metro area.

# North Hennepin Community College

[www.nhcc.edu](http://www.nhcc.edu)



**Admissions:** (763) 424-0702  
**Toll-free:** 1-800-818-0395  
**To arrange a campus visit:** (763) 424-0702

**Mailing address:** 7411 85th Ave. N.  
Brooklyn Park, MN 55445  
**City/population:** Brooklyn Park/75,781

**Tuition and fees (2011-2012):** \$5,220  
**FAFSA code:** 002370



## ENROLLMENT:

Total number students served ..... 10,690  
Full-time students .....37.2%  
Part-time students .....62.8%  
Percent male .....42.9%  
Percent female ..... 57.1%  
Percent students of color .....32.8%

**DEGREES OFFERED:** Associate in Arts, Associate in Fine Arts, Associate in Science, Associate in Applied Science, certificates

**LARGEST PROGRAMS:** Liberal arts and general studies, business and computer systems, graphic design, nursing, science, health careers

**UNIQUE PROGRAMS:** Theater, undergraduate research, medical lab technology, paralegal, Business ASAP (Associate in Science Accelerated Program), Transfer ASAP, individualized studies, Every-Other Weekend College, evening and weekend nursing, American Sign Language, criminal justice and law enforcement, creative writing, premed health career programs, honors programs

**STUDENT ACTIVITIES:** Special interest clubs and professional organizations, including performing and visual arts, Phi Theta Kappa honor society, multicultural programming, recreational activities, intramural sports, student government

**HOUSING:** The college has no on-campus housing, but rental units are within walking distance or on the Metro Transit bus line.

## HIGHLIGHTS

Conveniently located on a beautiful campus – bustling with activity and rich with diversity – in the northwest metropolitan area, North Hennepin Community College offers a variety of programs with flexible scheduling options, small class sizes and affordable tuition. Faculty and staff are dedicated to helping students achieve educational and career goals.

Save thousands of dollars by completing the first two years of college at North Hennepin and then transferring credits to a four-year university. Partnerships with universities even make it possible to earn a bachelor's degree in business, science or nursing on the North Hennepin campus. For those who want to enter the workforce fast and well-equipped, the college offers a variety of associate degrees or credit and noncredit certificate programs.

- Tour the campus any Tuesday at 5 p.m., or schedule a personal appointment with a new student specialist or student ambassador.
- Learn from highly educated, award-winning faculty who bring years of industry experience and love for teaching into the classroom.
- Connect with students through the North Hennepin Community College Facebook page, ask questions and get a feel for college life on campus.
- Search for classes offered 24/7 that fit your schedule on the Brooklyn Park campus or at the satellite location at Buffalo High School, online or via new classroom capture technology.
- Check out all the services and resources available to help you succeed, including GPS LifePlan, counseling, career planning and veterans resources.



## Northeast Higher Education District

The Northeast Higher Education District is a consortium of five state colleges: Hibbing, Itasca, Mesabi Range, Rainy River and Vermilion.



## Hibbing Community College

[www.hibbing.edu](http://www.hibbing.edu)

**Admissions:** (218) 262-7207  
**Toll-free:** 1-800-224-4422  
**To arrange a campus visit:** (218) 262-6713

**Mailing address:**  
 1515 E. 25th St.  
 Hibbing, MN 55746  
**City/population:** Hibbing/16,361



**Tuition and fees (2011-2012):** \$5,111  
**FAFSA code:** 002355

### ENROLLMENT:

Total number students served	2,224
Full-time students	64.5%
Part-time students	35.5%
Percent male	47.5%
Percent female	52.5%
Percent students of color	6.4%

**LARGEST PROGRAMS:** Nursing, law enforcement, electrical maintenance, automotive, liberal arts transfer

**UNIQUE PROGRAMS:** Pharmacy technician, solar photovoltaic, elder care/gerontology, industrial systems technology, helicopter pilot training, professional truck driver

### HIGHLIGHTS

"Dream and Achieve" at Hibbing Community College, which offers a mix of traditional liberal arts courses and innovative career programs to prepare students for transfer or immediate employment. Students will find a wide range of opportunities to nurture their strengths as well as a supportive, welcoming environment for all ages and stages of professional development.

- A variety of academic- and career-related clubs, student government, SkillsUSA, Toward a Sustainable Campus environmental group, theater, service learning, study abroad, varsity and intramural athletics, and more.
- Men's basketball, baseball; women's volleyball, basketball, softball; coed golf; club soccer.
- The college has convenient on-campus housing.

## Itasca Community College

[www.itascacc.edu](http://www.itascacc.edu)

**Admissions:** (218) 322-2340  
**Toll-free:** 1-800-996-6422  
 To arrange a campus visit: (218) 322-2340

**Mailing address:**  
 1851 E. Highway 169  
 Grand Rapids, MN 55744  
**City/population:** Grand Rapids/10,869



**Tuition and fees (2011-2012):** \$5,119  
**FAFSA code:** 002356

### ENROLLMENT:

Total number students served	1,573
Full-time students	75.7%
Part-time students	24.3%
Percent male	52.6%
Percent female	47.4%
Percent students of color	9.2%

**LARGEST PROGRAMS:** Liberal arts, engineering, natural resources, practical nursing, psychology

**UNIQUE PROGRAMS:** Applied psychology, geographic information systems, American Indian studies, industrial technology: pulp and paper, power generation

### HIGHLIGHTS

The scenic Itasca Community College campus, just 180 miles north of Minneapolis and St. Paul, is surrounded by majestic pines and more than 1,000 lakes.

- Student activities include academic and career-related clubs, Phi Theta Kappa honor society, Student Ambassadors, student government, global education and intramural sports.
- Men's football, basketball, wrestling, baseball; women's volleyball, basketball, softball.
- Itasca has two residence halls on campus and an adjacent student apartment complex. A list of available housing in the community is also available.
- Student services include career planning, free tutoring, TRIO Student Support Services, and services for students with disabilities.

## Mesabi Range Community & Technical College

[www.mesabirange.edu](http://www.mesabirange.edu)

**Admissions:** (218) 749-0313  
**Toll-free:** 1-800-657-3860  
**To arrange a campus visit:** (218) 749-0314

**Mailing address:**  
 1001 W. Chestnut St.  
 Virginia, MN 55792  
**City/population:** Eveleth/3,718; Virginia/8,712



**Tuition and fees (2011-2012):** \$5,111  
**FAFSA code:** 004009

### ENROLLMENT:

Total number students served	2,291
Full-time students	55.5%
Part-time students	44.5%
Percent male	57.5%
Percent female	42.5%
Percent students of color	8.2%

**LARGEST PROGRAMS:** Transfer programs, industrial mechanical technology, nursing, welding

**UNIQUE PROGRAMS:** Wind energy technology, human services, graphic design and print communications, masonry

### HIGHLIGHTS

Located in the heart of beautiful northeastern Minnesota, Mesabi Range has small class sizes that lead to personal attention and interaction with other students.

- The college foundation awards \$105,000 in scholarships annually.
- Strong tradition of successful athletics, student government and student life.
- Men's football, basketball, baseball; women's volleyball, basketball, softball.
- International study, student government, theater, Phi Theta Kappa honor society, career program clubs.
- Semi-furnished apartments on the Virginia campus.

## Rainy River Community College

[www.rrcc.mnscu.edu](http://www.rrcc.mnscu.edu)

**Admissions:** (218) 285-7722  
**Toll-free:** 1-800-456-3996  
 To arrange a campus visit: (218) 285-2213

**Mailing address:**  
 1501 Highway 71  
 International Falls, MN 56649  
**City/population:** International Falls/6,424

**Tuition and fees (2011-2012):** \$5,141  
**FAFSA code:** 006775

### ENROLLMENT:

Total number students served	438
Full-time students	76.8%
Part-time students	23.2%
Percent male	38.4%
Percent female	61.6%
Percent students of color	22.9%

**LARGEST PROGRAMS:** Liberal arts, science and math education, green and sustainable construction technology, industrial technology, nursing

**UNIQUE PROGRAMS:** Science and math education, green and sustainable construction technology, industrial technology, energy technician specialist

### HIGHLIGHTS

Located just five minutes from Voyageur's National Park and the Canadian border, Rainy River offers students intercultural experiences, small class sizes and personalized attention from instructors.

- Numerous scholarships are awarded each year.
- Free tutoring is available to all students.
- Athletics include NJCAA Division III men's basketball, baseball, and extramural hockey; NJCAA Division III women's volleyball, basketball, softball, and ACHA Division II club hockey.
- Student Senate, Phi Theta Kappa honor society, Black Association of Students, Anishinaabe Coalition and activity-based organizations.
- Newly remodeled, furnished apartment-style campus housing.

## Vermilion Community College

[www.vcc.edu](http://www.vcc.edu)

**Admissions:** (218) 235-2191  
**Toll-free:** 1-800-657-3608  
 To arrange a campus visit: (218) 235-2191

**Mailing address:**  
 1900 E. Camp St.  
 Ely, MN 55731  
**City/population:** Ely/3,460

**Tuition and fees (2011-2012):** \$5,141  
**FAFSA code:** 002350

### ENROLLMENT:

Total number students served	879
Full-time students	73.1%
Part-time students	26.9%
Percent male	66.2%
Percent female	33.8%
Percent students of color	8.8%

**LARGEST PROGRAMS:** Associate in Arts degree, wildland/wildlife law enforcement, natural resource technology, forestry

**UNIQUE PROGRAMS:** Taxidermy, water quality science, outdoor therapeutic recreation, sports management, park ranger training

### HIGHLIGHTS

It doesn't get any better than this. The outdoor enthusiast will appreciate the many programs and activities that can be offered only on the edge of the Boundary Waters Canoe Area Wilderness.

- Vermilion specializes in environmental programs for students interested in outdoor careers such as forestry, fisheries, wildlife, wilderness management, outdoor leadership and land surveying.
- Men's football, basketball, baseball; women's volleyball, basketball, softball.
- On-campus apartment-style housing; a full meal plan is available.
- Academic and social clubs, including wildlife, wilderness, wingshooters and outdoor pursuits.

## Northland Community & Technical College

[www.northlandcollege.edu](http://www.northlandcollege.edu)



**Admissions:** (218) 683-8552  
**Toll-free:** 1-800-959-6282  
**To arrange a campus visit:** (218) 683-8800

**Mailing address:** 1101 Highway 1 E.  
 Thief River Falls, MN 56701  
**City/population:** East Grand Forks/8,601  
 Thief River Falls/8,573

**Tuition and fees (2011-2012):** \$5,253  
**FAFSA code:** 002385



### ENROLLMENT:

Total number students served	5,822
Full-time students	47.1%
Part-time students	52.9%
Percent male	41.3%
Percent female	58.7%
Percent students of color	13.0%

**DEGREES OFFERED:** Associate in Arts, Associate in Science, Associate in Applied Science, diplomas, certificates

**LARGEST PROGRAMS:** Practical nursing; liberal arts; sales, marketing and management; aviation maintenance technology; associate degree mobility nursing

**UNIQUE PROGRAMS:** Aviation maintenance technology, unmanned aerial systems maintenance technician, cardiovascular technology-invasive, architectural technology and design, commercial vehicle operator, firefighter-paramedic, new surgical technology

**INTERCOLLEGIATE SPORTS:** NJCAA Division III athletics including men's football, basketball, baseball; women's volleyball, basketball, softball

**STUDENT ACTIVITIES:** Choir, community band, Phi Theta Kappa honor society, multicultural club, intramural athletics, student government, student and professional organizations

**HOUSING:** Numerous rental units are available in East Grand Forks and Thief River Falls. Both campuses maintain lists of housing. The Thief River Falls campus has apartment-style housing complexes on campus, although the college does not own the campus housing.

### HIGHLIGHTS

- Northland has campuses in East Grand Forks and Thief River Falls.
- More than 100 different career programs and degree options are available.
- Northland has one of the largest liberal arts programs of two-year colleges in northern Minnesota.
- Flexible scheduling gives students a variety of enrollment options. Students are able to attend full time or part time, and Northland offers hundreds of online classes each year.
- The average class size is 22 students.
- Numerous student resources are available, including career counselors and advisors, libraries, learning services and information technology.
- Students on both campuses are invited to participate in Pioneer intercollegiate athletics, intramurals and student life activities.
- Northland is the home of Pioneer 90.1, a 24-kilowatt FM radio station operated by new media production students and community volunteers.

# Northwest Technical College

[www.ntcmn.edu](http://www.ntcmn.edu)



**Admissions:** (218) 333-6647  
**Toll-free:** 1-800-942-8324  
**To arrange a campus visit:** (218) 333-6645

**Mailing address:** 905 Grant Ave. S.E.  
 Bemidji, MN 56601  
**City/population:** Bemidji/13,431

**Tuition and fees (2011-2012):** \$5,329  
**FAFSA code:** 005759



## ENROLLMENT:

Total number students served ..... 2,543  
 Full-time students ..... 39.5%  
 Part-time students ..... 60.5%  
 Percent male ..... 31.2%  
 Percent female ..... 68.8%  
 Percent students of color ..... 14.8%

**DEGREES OFFERED:** Associate in Science, Associate in Applied Science, diplomas, certificates

**LARGEST PROGRAMS:** Automotive service technology, child care and education, dental assisting, medical administrative secretary technology, nursing

**UNIQUE PROGRAMS:** High performance engine machinist, industrial model making, sustainable environment technologies, wind energy

**STUDENT ACTIVITIES:** Campus government; Phi Theta Kappa honor society; program clubs; Native American Club; intramural sports, clubs and activities through Bemidji State University

**HOUSING:** The college is aligned with Bemidji State University, and students are eligible to live in the residence halls and purchase a meal plan. Private housing information is available through the admissions office.

## HIGHLIGHTS

- Location – Situated in the beautiful north woods of Minnesota, Northwest Technical College has a mission to integrate the value of work with educational experiences to develop resourceful lifelong learners.
- Aligned with Bemidji State University – Northwest Technical College and Bemidji State University, just over two miles away, have a unique relationship that extends many benefits of attending a four-year university, including housing, meal plans, the recreation and fitness center, health services, the library, the American Indian Resource Center, clubs and campus activities.
- College and university agreements – Credit transfer agreements have been established for many degree programs to transfer to several colleges and universities.
- Online education – Multiple programs and a thorough list of courses are available online.
- Warm and welcoming – Students experience personal attention, small classes, accessible faculty, learning enrichment services and original artwork on campus.
- Campus visit – Campus visits are highly encouraged for students and their families. Visits may be scheduled by calling (218) 333-6645 or by going to the college's website, [www.ntcmn.edu](http://www.ntcmn.edu).

Northwest Technical College is aligned with Bemidji State University.

# Pine Technical College

[www.pinetech.edu](http://www.pinetech.edu)



**Admissions:** (320) 629-5100  
**Toll-free:** 1-800-521-7463  
**To arrange a campus visit:** (320) 629-5100

**Mailing address:** 900 Fourth St. S.E.  
 Pine City, MN 55063  
**City/population:** Pine City/3,123

**Tuition and fees (2011-2012):** \$4,925  
**FAFSA code:** 005535



## ENROLLMENT:

Total number students served ..... 1,365  
 Full-time students ..... 33.9%  
 Part-time students ..... 66.1%  
 Percent male ..... 33.4%  
 Percent female ..... 66.6%  
 Percent students of color ..... 8.0%

**DEGREES OFFERED:** Associate in Science, Associate in Applied Science, diplomas, certificates

**LARGEST PROGRAMS:** Automotive technology, business administration, practical nursing

**UNIQUE PROGRAMS:** American Sign Language, business technology, gunsmithing technology, network administration, public welfare financial worker

**STUDENT ACTIVITIES:** Student Senate, Phi Theta Kappa honor society, Ever Green Club, Math Club, Shooter's Association, Collegiate Entrepreneur Organization, Computer Club, Nursing Club, SkillsUSA

**HOUSING:** The college has no on-campus student housing, but many rental options are available within walking distance of the campus.

## HIGHLIGHTS

Pine Technical College offers a range of programs with flexible scheduling, small class sizes, industry-focused programs, experienced and knowledgeable instructors, and friendly, helpful staff. Graduates are well-prepared to enter their chosen fields or transfer to a university.

- Several Associate in Science degree programs provide students the opportunity to begin a four-year degree and take advantage of lower tuition rates and smaller class sizes while immediately focusing on a chosen major.
- The college's technical programs prepare students for job placement and employment. Examples include automotive technology, accounting, practical nursing, computer programming and more.
- A unique associate degree in health science aligned with Winona State University allows students to pursue careers in a variety of health-related fields.
- A collaboration with Lake Superior College brings students the option to earn an Associate in Arts degree right at home – without leaving the Pine Tech campus.
- The college's use of telecommunications and other distance education tools is a national model for colleges and universities.
- A winner of two grants awarded by the Department of Labor – one in manufacturing and one in health occupations – Pine Tech has expanded and enhanced its programs and technology in these areas.
- A vibrant student life environment provides opportunities for students from all disciplines to socialize, network, contribute and participate in the college community.
- Pine Technical College is proud to be a participating member in two of the Minnesota State Colleges and Universities Centers of Excellence – HealthForce Minnesota and the 360° Center for Manufacturing and Applied Engineering.



# Ridgewater College

[www.ridgewater.edu](http://www.ridgewater.edu)



**Admissions:** (320) 222-5200  
**Toll-free:** 1-800-722-1151  
**To arrange a campus visit:** (320) 222-5200

**Mailing address:** P.O. Box 1097  
 Willmar, MN 56201  
**City/population:** Hutchinson/14,178; Willmar/19,610

**Tuition and fees (2011-2012):** \$5,173  
**FAFSA code:** 005252



## ENROLLMENT:

Total number students served ..... 6,011  
 Full-time students ..... 62.4%  
 Part-time students ..... 37.6%  
 Percent male ..... 47.1%  
 Percent female ..... 52.9%  
 Percent students of color ..... 7.2%

**DEGREES OFFERED:** Associate in Arts, Associate in Science, Associate in Applied Science, diplomas, certificates

**LARGEST PROGRAMS:** Liberal arts and sciences, agriculture, nursing, administrative support, veterinary technology

**UNIQUE PROGRAMS:** Activity director, advanced collision services, agronomy technology, dairy management, calibration engineering technology, GPS/GIS for agriculture, insurance claim representative, nondestructive testing technology

**INTERCOLLEGIATE SPORTS:** Men's football, wrestling, basketball, baseball; women's volleyball, basketball, softball

**STUDENT ACTIVITIES:** Student government, college ambassadors, choir, theater, Phi Theta Kappa honor society, student and professional organizations, dozens of program-related clubs

**HOUSING:** Ridgewater College has no on-campus student housing, but affordable rental units are available within walking distance of each campus. The college provides students the most recent listings available for rental housing.

## HIGHLIGHTS

- Technical programs – Learn a trade and get a great job in two years or less. The college's 97 percent placement rate is evidence that employers love the graduates from the college's more than 40 degree programs.
- First two of four – Complete an Associate in Arts degree at Ridgewater and you'll be well on your way to a bachelor's degree in virtually any major.
- Online learning – Ridgewater now offers three completely online associate degrees: liberal arts, computer-aided drafting and design, and law enforcement-peace officer or corrections.
- Extraordinary value – Paying for college isn't easy, and you deserve a lot for your dollar. At Ridgewater, your investment in education is taken seriously, and student needs take top priority.
- Great people – Students and alumni note the caring and helpful nature of staff and faculty as one of Ridgewater's most impressive traits.
- Outstanding location – Enjoy the recreation and pace of life in central Minnesota while keeping a short commute to the metro area.
- Your success matters – Many outstanding support services are available at Ridgewater, including on-campus academic support centers, online tutoring, TRIO Student Support Services and regular student success workshops.

# Riverland Community College

[www.riverland.edu](http://www.riverland.edu)



**Admissions:** (507) 433-0600  
**Toll-free:** 1-800-247-5039  
**To arrange a campus visit:** (507) 433-0600

**Mailing address:** 1900 8th Ave. N.W., Austin, MN 55912  
**City/population:** Albert Lea/18,016; Austin/24,718; Owatonna/25,599

**Tuition and fees (2011-2012):** \$5,332  
**FAFSA code:** 002335



## ENROLLMENT:

Total number students served ..... 5,362  
 Full-time students ..... 40.2%  
 Part-time students ..... 59.8%  
 Percent male ..... 47.2%  
 Percent female ..... 52.8%  
 Percent students of color ..... 12.7%

**DEGREES OFFERED:** Associate in Arts, Associate in Fine Arts, Associate in Science, Associate in Applied Science, diplomas, certificates

**LARGEST PROGRAMS:** Liberal arts and sciences, nursing, business, supervisory management, law enforcement

**UNIQUE PROGRAMS:** Associate in Arts degree with business, global studies, music, physical education or theater emphasis; coaching; production technician; wind turbine technician; solar installer; supervisory management online

**INTERCOLLEGIATE SPORTS:** Men's soccer, baseball, basketball; women's volleyball, basketball, fastpitch softball

**STUDENT ACTIVITIES:** Student Senate, Student Ambassadors, Phi Theta Kappa honor society, music, theater, intramural sports, SkillsUSA, Multi-Cultural Club, R.I.O.T Christian Fellowship, Riverland Community Gay-Straight Alliance, Riverland Gaming Club, Amnesty International, Criminal Justice Society, Human Services Club, Left Ear Art Club, ACCENT literary magazine

**HOUSING:** Riverland's student housing offers an opportunity for 84 students to live on the Austin campus.

## HIGHLIGHTS

Riverland is a comprehensive community college inspiring learning for living through a personalized educational environment.

- Campuses in Albert Lea, Austin and Owatonna make it convenient to earn the first two years of a bachelor's degree or complete one of more than 50 career program options in accounting, business, business and office technology, construction, computer technology, health, management, manufacturing, service and transportation.
- Support services are available to help students improve study skills, locate resources, address personal issues, make strong career decisions or arrange the details of a smooth college transfer.
- Riverland awards 12 degrees, diplomas and certificates via distance learning (online and interactive TV). This provides flexible scheduling for students.
- Big Day On Campus is for high school students to experience Riverland. Offered monthly during the school year, participants tour campus, hear about student life and meet faculty.
- The college features a world-class health science education simulation center for nurses, radiographers and lab technicians.
- Riverland is among a small group of community colleges in the Minnesota State Colleges and Universities system that offer an Associate in Fine Arts degree.

# Rochester Community & Technical College

[www.rctc.edu](http://www.rctc.edu)



**Admissions:** (507) 285-7265  
**Toll-free:** 1-800-247-1296  
**To arrange a campus visit:** (507) 285-7557

**Mailing address:** 851 30th Ave. S.E.  
 Rochester, MN 55904  
**City/population:** Rochester/106,769

**Tuition and fees (2011-2012):** \$5,435  
**FAFSA code:** 002373



## ENROLLMENT:

Total number students served ..... 8,213  
 Full-time students ..... 54.6%  
 Part-time students ..... 45.4%  
 Percent male ..... 40.6%  
 Percent female ..... 59.4%  
 Percent students of color ..... 15.7%

**DEGREES OFFERED:** Associate in Arts, Associate in Fine Arts, Associate in Science, Associate in Applied Science, diplomas, certificates

**LARGEST PROGRAMS:** Liberal arts, nursing, health information technology, law enforcement, veterinary technology

**UNIQUE PROGRAMS:** Dental hygiene, environmental science, equine science, horticulture technology, music education, sport management, veterinary technology

**INTERCOLLEGIATE SPORTS:** Nationally renowned varsity NJCAA Division III athletics. Men's baseball, basketball, football, golf, wrestling; women's basketball, golf, soccer, softball, volleyball; NJCAA Division III men's basketball finished second in the nation in 2010 and 2011; NJCAA Division III women's national basketball champions in 2009; North Star Bowl football champions in 2008.

**STUDENT ACTIVITIES:** More than 25 student clubs and organizations, fine arts opportunities in music and theater, and student ambassador and student government programs

**HOUSING:** An apartment complex is located on college property and is available for student housing.

## HIGHLIGHTS

- Rochester Community and Technical College was founded in 1915 on a motion by Dr. Charles Mayo to the Rochester School Board. Rochester is Minnesota's oldest original community college and one of the nation's oldest original community colleges.
- The college serves approximately 8,200 students in credit-based courses and 3,000 students in noncredit courses.
- Rochester consistently lands near or at the top of the nation's "Most Livable Cities" lists.
- Rochester is Minnesota's third-largest city and home to the world-renowned Mayo Clinic and IBM.
- The college offers more than 300 different online classes and 70 credit-based programs with more than 130 credential options in the areas of liberal arts, allied health, business, services and technical career pathways.
- Rochester Community and Technical College is part of a learning alliance with Winona State University. This long-term collaboration offers certificate programs through master's degrees, all delivered on the Rochester campus.
- Visit Rochester Community and Technical College on YouTube or [facebook.com/MyRCTC](http://facebook.com/MyRCTC).

# St. Cloud Technical & Community College

[www.sctcc.edu](http://www.sctcc.edu)



**Admissions:** (320) 308-5089  
**Toll-free:** 1-800-222-1009  
**To arrange a campus visit:** (320) 308-5000

**Mailing address:** 1540 Northway Drive  
 St. Cloud, MN 56303  
**City/population:** St. Cloud/65,842

**Tuition and fees (2011-2012):** \$5,149  
**FAFSA code:** 005534



## ENROLLMENT:

Total number students served ..... 5,943  
 Full-time students ..... 56.2%  
 Part-time students ..... 43.8%  
 Percent male ..... 48.6%  
 Percent female ..... 51.4%  
 Percent students of color ..... 9.3%

**DEGREES OFFERED:** Associate in Arts, Associate in Science, Associate in Applied Science, diplomas, certificates

**LARGEST PROGRAMS:** Liberal arts and science, business management, accounting, nursing

**UNIQUE PROGRAMS:** Sonography, cardiovascular technology, water environment technology, civil engineering, health information technology, energy renewal, associate degree in nursing mobility

**INTERCOLLEGIATE SPORTS:** Men's basketball, baseball; women's basketball, softball, volleyball

**STUDENT ACTIVITIES:** More than 20 clubs and organizations, including student government, DECA, Phi Theta Kappa honor society, SkillsUSA, and fine arts opportunities in writing, theater and music

**HOUSING:** The college has no on-campus housing. The college collaborates with St. Cloud State University to provide students with a variety of housing opportunities, including the new Coborn Plaza Apartments with private bedrooms and bathrooms.

## HIGHLIGHTS

- St. Cloud Technical and Community College is one of the fastest-growing colleges in the Minnesota State Colleges and Universities system, offering:
- An Associate in Arts degree and more than 90 career majors that can be completed in two years or less.
  - Graduates have a 90 percent placement rate in their field of study averaged over the past five years.
  - A strong and growing nursing program and new, state-of-the-art facilities and labs for its health sciences programs.
  - Seamless transfer opportunities to a variety of four-year universities, including St. Cloud State University.
  - Flexible education and career opportunities as a partner in the 360° Manufacturing and Applied Engineering Center of Excellence.
  - A child care facility on campus.
  - A rich history of applied learning and engaged faculty who are committed to quality and student success.
  - More than \$150,000 scholarships annually.

# Saint Paul College

[www.saintpaul.edu](http://www.saintpaul.edu)



**Admissions:** (651) 846-1600  
**Toll-free:** 1-800-227-6029  
**To arrange a campus visit:** (651) 846-1666

**Mailing address:** 235 Marshall Ave.  
 St. Paul, MN 55102  
**City/population:** St. Paul/285,068

**Tuition and fees (2011-2012):** \$4,986  
**FAFSA code:** 005533



## ENROLLMENT:

Total number students served ..... 9,625  
 Full-time students ..... 41.9%  
 Part-time students ..... 58.1%  
 Percent male ..... 44.5%  
 Percent female ..... 55.5%  
 Percent students of color ..... 52.5%

**DEGREES OFFERED:** Associate in Arts, Associate in Science, Associate in Applied Science, diplomas, certificates

**LARGEST PROGRAMS:** Liberal arts and sciences, practical nursing, business and computer science, American Sign Language interpreter, construction trades

**UNIQUE PROGRAMS:** Health information technology, American Sign Language interpreter and transliterator, watchmaking, land surveying, sheet metal, international trade, reflexology, personal trainer, computer graphics and programming, medical laboratory technology

**STUDENT ACTIVITIES:** Student Senate, SkillsUSA, Veterans Center, Creative Writing Club, Fitness Club, Science Club, PRISM (a GLBT group), Theatre and Speech Club, American Sign Language Club, Phi Theta Kappa honor society, Student Ambassadors; multicultural student organizations including Muslim Student Association and Asian Student Association

**HOUSING:** The college has no on-campus student housing, but many rental units are within walking distance of the campus.

## HIGHLIGHTS

Saint Paul College recently was ranked the No. 1 community college in the nation by Washington Monthly magazine for student engagement in active and collaborative learning, student-faculty interaction and support for learning. The college offers 39 associate degree programs, including the Associate in Arts degree, and 60 career certificate and diploma programs.

- For more than 100 years, Saint Paul College has been helping students succeed in high-demand careers.
- Transfer agreements with four-year colleges and universities provide pathways for students to transfer and continue their higher education. The college also works with more than 500 business, industry and labor representatives to provide employment opportunities for graduates.
- Advanced technology enhances curriculum and the learning experience. Classrooms are equipped with state-of-the-art technology, and free WiFi access is available campuswide.
- The campus is student-oriented, with support services that include academic support and free tutoring, computer labs, retention services, transfer services, career services and access to free online job postings.
- The Power of You scholarship program provides qualified students graduating from Minneapolis or St. Paul public schools the opportunity to attend Saint Paul College tuition-free.
- "Start Here" tour and information sessions are every Tuesday at 10 a.m. and the first and third Wednesday of each month at 6 p.m. Go to [www.saintpaul.edu/StartHere](http://www.saintpaul.edu/StartHere).

# South Central College

[explore.southcentral.edu](http://explore.southcentral.edu)



**Admissions:** (507) 389-7220  
**Toll-free:** 1-800-722-9359  
**To arrange a campus visit:** (507) 389-7220

**Mailing address:** 1920 Lee Blvd.  
 North Mankato, MN 56003  
**City/population:** Mankato area/52,703; Faribault/23,352

**Tuition and fees (2011-2012):** \$5,169  
**FAFSA code:** 005537



## ENROLLMENT:

Total number students served ..... 6,247  
 Full-time students ..... 52.9%  
 Part-time students ..... 47.1%  
 Percent male ..... 49.1%  
 Percent female ..... 50.9%  
 Percent students of color ..... 8.2%

**DEGREES OFFERED:** Associate in Arts, Associate in Science, Associate in Applied Science, diplomas, certificates

**LARGEST PROGRAMS:** Liberal arts and sciences, nursing, agribusiness, accounting, computer careers, office technology, marketing management

**UNIQUE PROGRAMS:** Agribusiness, building design and energy technology, civil engineering technology, community social service, construction field supervision, culinary arts, graphic communication, legal administrative assistant, mechatronics, medical laboratory technician

**STUDENT ACTIVITIES:** Business Professionals of America, Campus Activities Board, Campus Crusade, Collegiate DECA, Environmental Action Group, Muslim Student Organization, National Student Nurses organization, Phi Theta Kappa honor society, Post-Secondary Agriculture Students organization, SkillsUSA, Society of Leadership and Success, speech team, student newspaper, Student Senate and a variety of educational, social and recreational activities

**HOUSING:** Off-campus housing is available in the area.

## HIGHLIGHTS

- South Central College is a growing comprehensive community and technical college in two great college towns – Faribault and North Mankato. The college offers students more choices, better value and unlimited opportunities.
- The college provides an Associate in Arts degree in liberal arts and sciences that allows students to take the first two years of a bachelor's degree, in addition to more than 50 career and professional majors.
- South Central College has a growing online presence and offers fully accredited courses and majors that are taught by the college's faculty.
- The college emphasizes globalization and integrates an international perspective into the curriculum. Several international travel experiences are available to students.
- South Central College enjoys established partnerships with regional businesses and industries. This provides great opportunities for student employment and internships.
- South Central College offers career counseling, advising services, TRIO student support services, veterans services and academic support services, including tutoring in math and science, and assistance for students with disabilities.
- The college foundations provide more than \$250,000 in student scholarships annually, including full-tuition Presidential Scholarships for seniors demonstrating leadership skills while maintaining a 3.75 or greater grade point average. Scholarship deadline is mid-March.



# Planning for transfer

**You can make it easier to transfer from a two-year college to a four-year university by planning ahead**

College students often decide to transfer to a different institution while working toward a degree, and the Minnesota State Colleges and Universities work together to make transferring easier.

Plan ahead to transfer successfully. If you think you may want to transfer someday to a different college or university to finish your degree, let your college advisor know right away. Some programs and courses are not designed for transfer and may not apply to four-year degree majors. Before you choose a program and register for classes, be sure to ask whether the credits will transfer. Some general education courses may not apply toward a specific career program.

The Minnesota Transfer Curriculum is a 40-credit package of general education courses offered at all state universities and community colleges, and all or part of the package is offered at the technical colleges. The Minnesota Transfer Curriculum is accepted for transfer to the other state colleges and universities, the University of Minnesota and some private colleges.

Associate in Arts degrees contain the entire Minnesota Transfer Curriculum. The Associate in Science, Associate in Fine Arts and Associate in Applied Science degrees include parts of the Minnesota Transfer Curriculum. Also, a growing number of career preparation programs have transfer agreements with specific programs at four-year universities and colleges.

More information about transferring can be found at **[www.mnscu.edu/transfer](http://www.mnscu.edu/transfer)**.

Transfer specialists at each campus can answer questions, help you with course selection and help you plan for transfer. Ask for the transfer specialist when you call or visit the admissions office where you intend to enroll. And if you know where you plan to transfer, contact that admissions office for information, too. The transfer specialists' names and other information can be found at **[www.mnscu.edu/transfer](http://www.mnscu.edu/transfer)**.

An appeals process is available for transfer students who do not agree with how their credits transfer toward a degree.



# 4-year state universities



Minnesota's seven state universities offer programs leading to bachelor's degrees, master's degrees and other advanced degrees. Most have on-campus housing available to students. You can start at a state university and complete your degree, or start at a two-year college and transfer to a state university to complete your degree. The program grid for undergraduate programs is on Page 32 and graduate programs on Page 33.



# Undergraduate programs

## 4-year state universities

	Bemidji State	Metropolitan State	Minnesota State, Mankato	Minnesota State, Moorhead	St. Cloud State	Southwest Minnesota State	Winona State	MinnesotaOnline.org
Accounting	•	•	•	•	•	•	•	•
Advertising	•	•	•	•	•	•	•	•
Agricultural Business & Production						•		
Agricultural Science & Technology						•		
Aircraft Pilot & Navigator			•					
American Indian/Native American Studies	•	•	•	•	•	•	•	•
Anthropology/Archaeology			•	•	•			
Art History			•	•	•			
Art/Studio Arts			•	•	•	•	•	•
Aviation Management & Airway Science			•					
Banking & Finance		•	•	•	•	•	•	•
Biological & Natural Sciences	•	•	•	•	•	•	•	•
Biotechnology/Biochemistry			•	•	•	•	•	•
Business Administration & Management	•	•	•	•	•	•	•	•
Chemistry	•	•	•	•	•	•	•	•
Cognitive Science			•					
Communication Sciences & Disorders			•	•	•			
Communications Studies	•	•	•	•	•	•	•	•
Community Health Services	•	•	•	•	•	•	•	•
Computer Engineering Technology			•					
Computer Networking			•					
Computer Science & Information Systems	•	•	•	•	•	•	•	•
Computer Security & Forensics/IT Auditing		•	•	•				
Construction Management			•	•				
Counseling - Chemical Dependency		•	•	•	•			
Criminal Justice/Corrections	•	•	•	•	•	•	•	•
Cytotechnology							•	
Dance			•					
Database Technologies & Administration		•	•					
Dental Hygienist		•	•					
Digital Arts, Computer Animation & Multimedia	•							
Early Childhood Studies		•						
East Asian Studies			•					
Economics	•	•	•	•	•	•	•	•
Education - Instructional Technology			•				•	
Engineering - Automotive			•					
Engineering - Civil & Surveying			•	•				
Engineering - Composite Materials							•	
Engineering - Computer Hardware/Software			•	•				
Engineering - Electrical			•	•				
Engineering - Manufacturing				•				
Engineering - Mechanical			•	•				
Engineering Technology - Electronic			•					
Engineering Technology - General	•							•
English - Language, Literature, Writing	•	•	•	•	•	•	•	•
Entrepreneurship				•				

Environmental & Earth Sciences	•		•	•	•	•	•	•
Ethnic & Cultural Studies		•	•	•				
Family Consumer Science			•					
Film Studies				•	•			
Filmmaking & Screenwriting		•						
Food Sciences			•					
Geographical Information Systems (GIS)			•					
Geography & Cartography	•		•	•	•			
Gerontology			•					
Global Studies/International Relations	•		•	•	•		•	
Graphic Design & Visual Communications	•		•					
Health Services Administration			•					
Health, Fitness & Sport Science	•		•	•	•	•	•	•
History	•	•	•	•	•	•	•	•
Hotel, Restaurant & Casino Management		•				•		
Human & Community Services		•						
Human Resources Management		•	•				•	•
Humanities	•	•						
Individualized & Multidisciplinary Studies	•	•	•	•	•	•	•	•
International Business		•	•	•				
Languages - French			•		•			
Languages - German			•		•			
Languages - Spanish	•		•	•	•	•	•	•
Latin American Studies					•			
Law Enforcement		•	•				•	•
Legal Studies			•	•			•	
Liberal Arts & Sciences	•	•	•	•	•		•	
Linguistics							•	
Management Information Systems	•	•			•		•	
Manufacturing & Industrial Technology	•		•				•	
Marketing & Sales		•	•		•	•	•	•
Mass Communications, Broadcasting & Journalism	•		•	•	•		•	
Mathematics	•	•	•	•	•	•	•	•
Medical Technology/Clinical Lab Science	•		•	•	•	•	•	•
Meteorology					•			
Music	•		•	•	•	•	•	•
Music Industry Management			•	•		•	•	
Nuclear Medical Technology					•			
Nursing	•	•	•	•	•	•	•	•
Nursing - Advanced Practice			•					
Nursing - Wound/Ostomy/Continence Care	•							•
Paralegal				•			•	
Parks & Recreation			•					
Philosophy		•	•	•	•	•		
Physics			•	•	•		•	
Political Science	•		•	•	•	•	•	•

Psychology	•	•	•	•	•	•	•	•
Public Administration			•				•	•
Public Security & Emergency Management							•	•
Publishing				•				
Radiologic Technology					•			
Real Estate/Property Management					•			
Scandinavian Studies			•					
Social Sciences/Studies	•	•	•					
Social Work	•	•	•	•	•	•	•	•
Sociology	•	•	•	•	•	•	•	•
Sports Management	•		•					
Statistics			•		•			
Teaching - Art			•	•	•	•	•	•
Teaching - Biology/Life Sciences		•	•	•	•	•	•	•
Teaching - Business Education								•
Teaching - Career & Technical			•		•			
Teaching - Chemistry			•	•	•	•	•	•
Teaching - Communication Arts & Literature	•	•	•	•	•	•	•	•
Teaching - Consumer Science			•					
Teaching - Early Childhood	•	•		•	•	•	•	•
Teaching - Elementary	•	•	•	•	•	•	•	•
Teaching - English as a Second Language							•	
Teaching - French Language & Culture			•		•			
Teaching - German Language & Culture			•		•			
Teaching - Health	•	•	•	•	•	•	•	•
Teaching - Mathematics	•	•	•	•	•	•	•	•
Teaching - Music	•	•	•	•	•	•	•	•
Teaching - Physical Education	•	•	•	•	•	•	•	•
Teaching - Physical/Earth Science	•	•	•	•	•	•	•	•
Teaching - Physics			•	•	•	•	•	•
Teaching - Reading/Literacy				•				
Teaching - Social Studies/History	•	•	•	•	•	•	•	•
Teaching - Spanish Language & Culture	•	•	•	•	•	•	•	•
Teaching - Special Education			•	•	•	•	•	•
Teaching - Theater Arts/Dance			•					
Technology Studies					•			
Theater Arts & Drama		•	•	•	•	•	•	•
Urban Planning/Regional Studies			•		•			
Wilderness Management & Wildland Firefighter	•							
Women & Gender Studies		•	•	•	•			

Some programs are offered only online.  
Not all of the system's 3,800 programs are listed here.  
To find more, go to [www.mnscu.edu](http://www.mnscu.edu).



# Graduate programs

## 4-year state universities

	Bemidji State	Metropolitan State	Minnesota State, Mankato	Minnesota State Moorhead	St. Cloud State	Southwest Minnesota State	Winona State	MinnesotaOnline.org
Anthropology/Archaeology			•	•	•			
Art/Studio Arts			•	•	•			
Biological & Natural Sciences	•		•	•	•			
Biomedical Technology/Clinical Research			•	•	•			
Business Administration & Management		•	•	•	•	•		•
Communication Sciences & Disorders			•	•	•			
Communications Studies	•	•	•	•	•			
Community Health Services			•	•	•			
Computer Science & Information Systems		•	•	•	•			
Computer Security & Forensics/IT Auditing				•	•			
Counseling - Chemical Dependency				•	•	•	•	
Counseling - College				•	•			
Counseling - K-12			•	•	•	•		
Counseling - Marriage & Family			•	•	•			
Counseling - Mental Health				•	•			
Counseling - Rehabilitation			•	•	•		•	
Criminal Justice/Corrections		•	•	•	•		•	
Database Technologies & Administration		•	•	•	•		•	
Dental Health Specialist		•						
Economics				•	•			
Education - Administration & Support			•	•	•	•	•	
Education - Curriculum & Instruction	•		•	•	•	•	•	
Education - General			•	•	•	•	•	
Education - Higher Education Administration				•	•			
Education - Instructional Technology	•		•	•	•	•	•	
Education - Student Development & Learning			•	•	•	•	•	
Engineering - General			•	•	•			
Engineering Management				•	•			
English - Language, Literature, Writing	•	•	•	•	•	•	•	
Environmental & Earth Sciences	•	•	•	•	•			
Ethnic & Cultural Studies			•	•	•			
Geographical Information Systems (GIS)			•	•	•			
Geography & Cartography			•	•	•			
Gerontology			•	•	•			
Health, Fitness & Sport Science			•	•	•			
History			•	•	•			
Individualized & Multidisciplinary Studies			•	•	•			
Languages - French			•	•	•			
Languages - Spanish			•	•	•			
Liberal Arts & Sciences		•	•	•	•			
Management Information Systems		•	•	•	•			•
Manufacturing & Industrial Technology			•	•	•			
Mass Communications, Broadcasting & Journalism				•	•			

	Bemidji State	Metropolitan State	Minnesota State, Mankato	Minnesota State Moorhead	St. Cloud State	Southwest Minnesota State	Winona State	MinnesotaOnline.org
Mathematics			•	•	•			
Medical Product Regulation				•	•			
Music			•	•	•			
Nursing		•	•	•	•			
Nursing - Administration		•	•	•	•		•	•
Nursing - Advanced Practice		•	•	•	•		•	•
Parks & Recreation				•	•		•	
Physics		•	•	•	•			
Psychology		•	•	•	•			
Psychology - Clinical			•	•	•		•	
Psychology - Counseling	•		•	•	•			
Psychology - Industrial & Organizational			•	•	•			
Psychology - School			•	•	•			
Public Administration		•	•	•	•			
Public Security & Emergency Management		•	•	•	•		•	
Publishing			•	•	•			
Social Work			•	•	•			
Sociology		•	•	•	•			
Sports Management			•	•	•			
Statistics			•	•	•			
Teaching - Biology/Life Sciences			•	•	•			
Teaching - Career & Technical				•	•		•	
Teaching - Communication Arts & Literature	•	•	•	•	•		•	
Teaching - Early Childhood			•	•	•		•	•
Teaching - Elementary			•	•	•			
Teaching - English as a Second Language			•	•	•			
Teaching - French Language & Culture			•	•	•			
Teaching - Health			•	•	•			
Teaching - Humanities/Interdisciplinary			•	•	•			
Teaching - Library/Information Media			•	•	•		•	
Teaching - Mathematics	•	•	•	•	•			
Teaching - Music			•	•	•			
Teaching - Physical Education			•	•	•		•	•
Teaching - Physical/Earth Science	•	•	•	•	•			
Teaching - Physics			•	•	•			
Teaching - Reading/Literacy			•	•	•		•	
Teaching - Social Studies/History			•	•	•			
Teaching - Spanish Language & Culture			•	•	•			
Teaching - Special Education	•	•	•	•	•	•	•	•
Teaching - Urban Education		•	•	•	•			
Technology Studies			•	•	•			
Theater Arts & Drama			•	•	•			
Urban Planning/Regional Studies			•	•	•			
Women & Gender Studies			•	•	•			



Some programs are offered only online. Not all of the system's 3,800 programs are listed here. To find more, go to [www.mnscu.edu](http://www.mnscu.edu).

# Bemidji State University

[www.bemidjistate.edu](http://www.bemidjistate.edu)



**Admissions:** (218) 755-2040

**Toll-free:** 1-877-236-4354

To arrange a campus visit: 1-877-236-4354

**Mailing address:**

Admissions

1500 Birchmont Drive N.E.

Bemidji, MN 56601-2699

**City/population:** Bemidji/13,431

**Tuition and fees (2011-2012):** \$7,599

**FAFSA code:** 002336

**ENROLLMENT:**

Total number students served .....6,700

Full-time students .....71.8%

Part-time students .....28.2%

Percent male .....44.8%

Percent female .....55.2%

Percent students of color .....7.2%

**DEGREES:** Associate degrees, bachelor's degrees, master's degrees, undergraduate and graduate certificates

**LARGEST PROGRAMS:** Technological studies, psychology, education, biology, criminal justice, business administration

**UNIQUE PROGRAMS:** Entrepreneurship/ small business management, aquatic biology, environmental studies, applied engineering, clinical laboratory science, Indian studies, design technology, creative writing, sport management, marketing communication, international business

**SPECIAL OPTIONS:**

**PROGRAM MINORS** – Fraud examination, applied public policy, Ojibwe, exercise science, geographic information systems, art, developmental adapted physical education, management information systems, electronic writing, computer forensics

**EMPHASES & OPTIONS** – Exhibit design, construction management, wetlands ecology, criminalistics, engineering, model making, vocal performance, manufacturing technology

**PREPROFESSIONAL PROGRAMS** – Fourteen, including law, medicine, chiropractic, occupational therapy, veterinary medicine, podiatry, osteopathy, pharmacy

**INTERCOLLEGIATE SPORTS:** Men's NCAA

Division I ice hockey, NCAA Division II football, golf, basketball, baseball; women's NCAA Division I ice hockey, NCAA Division II volleyball, track and field (indoor and outdoor), basketball, cross country, golf, soccer, softball, tennis

**STUDENT ACTIVITIES:** Nationally recognized Outdoor Program Center with lakeside amenities; more than 85 clubs and organizations in areas such as ceramics, choir, social work, Spanish, political science and honors. Also special-interest organizations, including Students for the Environment, Council of Indian Students, International Student Organization, Ducks Unlimited, Students Today Leaders Forever;



extensive intramural and sports-recreation programs, including flag football, sand volleyball, broomball, rugby and disc golf; Student Senate and residence hall councils; Greek service and social organizations.

**HOUSING:** Six residence halls offer many living options, from standard singles and doubles to single-parent apartments. A suites-style hall includes social spaces with fireplaces, a computer gaming room, a lakeside terrace and fire pits. All halls are connected to the campus underground walkway system and conveniently located near the fitness and recreation center, university dining and campus convenience stores.

## HIGHLIGHTS

Bemidji State University is a lakeside campus offering arts, sciences and professional programs in a personal learning atmosphere focused on the environment, service and the global family.

- **Top tier** – Ranked as a "top-tier" Midwest university for the third consecutive year by U.S. News and World Report.
- **Nationally recognized** – Named one of the nation's 311 most eco-friendly campuses by The Princeton Review.
- **New on campus** – New regional event center and home for Beaver hockey now open; the President's Commission, a competitively selected student group, studied the university's role in helping students choose careers and get jobs.
- **Major opportunities** – More than 50 majors and preprofessional programs, often customizable by adding an emphasis area, concentration or

specialization; many Web-based options, including 400 courses and six online degrees.

- **Service-minded** – All undergraduates take an environment class related to their major. Students may obtain a development transcript detailing their co-curricular involvement.
- **Small classes** – Nearly half of the university's classes have 20 or fewer students; only 5 percent of classes have 50 or more students.
- **Personal attention** – Low 20-to-1 ratio of students to faculty. Professors are readily available outside of class.
- **Affordable tuition** – Students may take 12 to 18 credits for the same rate. Resident or reciprocity tuition rates are available for all undergraduates. Some classes and programs apply differential tuition rates. About 83 percent of students receive some type of financial aid.
- **Athletic-academic champions** – Nationally competitive men's hockey team earned a berth in the NCAA's Frozen Four in 2009 and won the WCHA semifinals in 2011. In past five years, the track and field program produced 16 All-America honorees, including three NCAA Division II individual championships. Nine Bemidji State University athletes have received Academic All-America honors since 2000.
- **Outdoor adventures** – With a lakeside facility, the Outdoor Program Center offers an array of adventures, from canoeing, cross-country skiing and hiking locally to backpacking and rock climbing in the western United States.

Bemidji State University is aligned with Northwest Technical College.





# Metropolitan State University

[www.metrostate.edu](http://www.metrostate.edu)



**Admissions:** (651) 793-1302

**To arrange a campus visit:** (651) 793-1302

**Mailing address:**

700 7th St. E.

St. Paul, MN 55106-5000

**City/population:** St. Paul/285,068

Minneapolis/382,578

**Tuition and fees (2011-2012):** \$6,341

**FAFSA code:** 010374

**ENROLLMENT:**

Total number students served .....10,199

Full-time students .....34.3%

Part-time students .....65.7%

Percent male .....42.4%

Percent female .....57.6%

Percent students of color .....28.3%

**DEGREES OFFERED:** Bachelor's degrees, master's degrees, certificates, applied doctorate degrees

**LARGEST PROGRAMS:** Individualized studies, accounting, business administration, psychology, nursing

**UNIQUE PROGRAMS:** Applied doctorate in business administration, applied doctorate in nursing practice, bachelor's degree completion program for Peace Corps volunteers, computer forensics, dental hygiene, early childhood education, law enforcement, oral health care practitioner, registered nurse to master's degree in nursing, screenwriting, technical communication, theater, urban elementary education

**SPECIAL OPTIONS:**

**PROGRAM MINORS** – Advertising, anthropology, biology, child psychology, civic engagement, computer forensics, creative writing, criminal justice, disability studies, educational psychology, environmental communication, experimental intermedia, gender studies, industrial and organizational psychology, media literacy, mental health and psychology, practical ethics, project management, religious studies, social gerontology, theater, violence prevention and intervention

**EMPHASES & OPTIONS** – Individualized bachelor's degree, which includes collaborative programs with community and technical colleges; urban teacher programs for elementary, middle school and secondary licensure; human services bachelor's degree with focus areas, including corrections, disability studies, family studies, human services administration, social gerontology, training and adult development, and violence prevention and intervention

**STUDENT ACTIVITIES:** Student Senate, student newspaper, University Activities Board, Theater Underground, International Student Organization, Haute Dish (fine arts magazine), TRIO Student Union; interest area and professional-focused student organizations, such as Alcohol and Drug Counseling Student Group, Law Enforcement and Criminal Justice Club, Nursing Student Organization,



Psychology Club, Students for Social Change, Student Science Association, Technical Writers Group, Urban Teacher Club; several ethnic- and cultural-specific organizations, such as African American Association, Asian Student Organization, Lavender Bridge (GLBT students), The Latinos, Muslim Student Organization, Voices of Indian Council for Educational Success, Women Empowered, Computer Forensics, Metro State Veterans Network

**HOUSING:** The university has no on-campus housing, but rental units are available within walking distance or on local bus lines.

## HIGHLIGHTS

- Meets the unique educational needs of those living and working in the metropolitan region as the premier urban public comprehensive system university in the Twin Cities.
- Focuses on providing high-quality, affordable educational programs and services in a student-centered environment.
- Provides more than 50 undergraduate programs and a number of graduate programs, with the option to create individualized degree programs.
- Has faculty who bring both practical and theoretical knowledge to their instruction.
- Reflects the area's rich diversity in its students, faculty, staff and community partnerships.
- Demonstrates unwavering commitment to civic engagement.
- Offers daytime, evening, online and weekend classes on two main campuses plus several other locations, with comfortable class sizes and flexible, innovative scheduling (Minneapolis campus co-located with Minneapolis Community and Technical College).
- Awards credits for college-level learning that students gain through nonclassroom experience.
- Encourages creative learning strategies, such as online learning, internships and independent study.
- Collaborates with Hennepin Technical College in Brooklyn Park on the Law Enforcement and Criminal Justice Education Center.
- Works with the Peace Corps to allow volunteers to earn bachelor's degrees while serving.
- Named the Outstanding Advising Technology Innovation winner by the National Academic Advising Association for the university's online orientation.







**Admissions:** (507) 389-1822

**Toll-free:** 1-800-722-0544

To arrange a campus visit: 1-800-722-0544

**Mailing address:**

122 Taylor Center

Mankato, MN 56001

City/population: Mankato area/52,703

**Tuition and fees (2011-2012):** \$6,836

**FAFSA code:** 002360

**ENROLLMENT:**

Total number students served .....17,351

Full-time students .....80.4%

Part-time students .....19.6%

Percent male .....46.8%

Percent female .....53.2%

Percent students of color .....9.1%

**DEGREES OFFERED:** Associate degrees, bachelor's degrees, master's degrees, undergraduate and graduate certificates, specialist degrees, applied doctorate degrees

**LARGEST PROGRAMS:** Nursing and prenursing, elementary education, business management, biology, law enforcement

**UNIQUE PROGRAMS:** American Indian studies, athletic training, automotive engineering technology, aviation, cognitive science, civil engineering, computer engineering technology, construction management, dental hygiene, Scandinavian studies, technical communication, urban and regional studies; applied doctorates in educational leadership, counselor education/supervision, school psychology, nursing practice; master's in anthropology, community health, environmental sciences, experiential education, language education, industrial/organizational psychology, industrial/manufacturing engineering, recreation, parks and leisure, theater arts and drama, women's studies

**SPECIAL OPTIONS:**

**PROGRAM MINORS** – Business law, corporate and community fitness/wellness, development adapted physical education, geology, gerontology, Latin American studies, military science

**EMPHASES & OPTIONS** – Art teaching, human resource management, elementary/secondary school administration, family nurse practitioner, financial planning, microbiology, music industry audio production, public relations, toxicology

**PREPROFESSIONAL PROGRAMS** – Sixteen: agriculture, chiropractic, dental, engineering, forestry, law, medicine, mortuary science, occupational therapy, optometry, osteopathic medicine, pharmacy, physical therapy, podiatric medicine, theology, veterinary medicine

**INTERCOLLEGIATE SPORTS:** Men's NCAA Division I hockey, Division II baseball, basketball, cross country, football, golf, indoor and outdoor track, wrestling; women's NCAA Division I hockey, Division II basketball,



cross country, golf, soccer, softball, swimming, tennis, indoor and outdoor track, volleyball

**STUDENT ACTIVITIES:** More than 200 clubs and organizations, including academic student groups, student government and leadership, intramural sports, international student groups, honorary and professional fraternities and sororities, special-interest groups, religious organizations, intramural sports

**HOUSING:** Four on-campus residence communities house 3,300 students, with First-Year-Experience programs for freshmen. New suite-style, 600-person hall for sophomores, juniors and seniors. Many off-campus rental units for upperclassmen are within easy walking distance from campus.

**HIGHLIGHTS**

Minnesota State Mankato: Where real-world thinking helps students transform big ideas into rewarding futures.

- One of Midwest's most beautiful campuses: 300 acres overlooking the majestic Minnesota River Valley.
- Campus tours every weekday at 9:30 a.m., 10:30 a.m., 1 p.m. and 2 p.m.
- Ranked in top quartile of the nation's four-year colleges and universities (Forbes America's Best Colleges).
- About 17,000 students, including 650 international students from 72 countries.

- More than \$102 million available in scholarships, assistantships, grants, work-study and student loans.
- Hundreds of student research opportunities in 20 centers.
- Undergraduates conduct research side-by-side with nationally recognized faculty.
- Four applied doctorate programs: nursing practice, educational leadership, counselor education, school psychology.
- New high-tech campus buildings: Suite-style residence hall, state-of-the-art chemistry building, alternative energy complex, new student union.
- "Tech-Rec" exercise gym: 40 machines with Internet and cable TV.
- 4,800-square-foot student weight room, three student basketball and volleyball courts, indoor student walking and running track.
- Wireless connectivity throughout campus.
- State's premiere college theater: 10 acclaimed musicals and plays per year in two theaters; four summer productions.
- Nationally renowned men's and women's basketball, NCAA Division I hockey, wrestling, track, swimming.
- More than 200 student organizations, including nationally known handball, forensics, automotive design.
- Home of Vikings Training Camp and Timberwolves mini-camp.



# Minnesota State University Moorhead

[www.msum.com](http://www.msum.com)



**Admissions:** (218) 477-2161

**Toll-free:** 1-800-593-7246

**To arrange a campus visit:** [www.msum.com](http://www.msum.com)

**Mailing address:**

1104 7th Ave. S.

Moorhead, MN 56563

**City/population:** Moorhead area/143,569

**Tuition and fees (2011-2012):** \$6,937

**FAFSA code:** 002367

**ENROLLMENT:**

Total number students served .....8,899

Full-time students .....78.9%

Part-time students .....21.1%

Percent male .....41.4%

Percent female .....58.6%

Percent students of color .....6.6%

**DEGREES OFFERED:** Associate degrees, bachelor's degrees, master's degrees, undergraduate and graduate certificates, specialist degrees

**LARGEST PROGRAMS:** Business administration, elementary education, mass communications, biosciences, art and design

**UNIQUE PROGRAMS:** Anthropology, athletic training, biotechnology, construction management, criminal justice, East Asian studies, elementary inclusive education, exercise science, film studies, geosciences, gerontology, graphic communications, health services administration, international studies, legal studies, medical physics, music industry, operations management, paralegal, speech/language/hearing science

**SPECIAL OPTIONS:**

**PROGRAM MINORS** – Astronomy, communication studies, East Asian studies, gerontology, language and literacy, leadership studies, religious studies, Spanish, theater dance, women's studies

**EMPHASES & OPTIONS** – Digital arts, computer animation and multimedia, elder law and probate, geoarchaeology, graphic design, health and medical sciences, integrated advertising and public relations, international business, long-term care administration, online journalism, specific special education disabilities

**PREPROFESSIONAL PROGRAMS** – Chiropractic, dentistry, medicine, occupational therapy, optometry, physical therapy, physician's assistant, veterinary science

**INTERCOLLEGIATE SPORTS:** 340 Dragons compete in NCAA Division II, Northern Sun Intercollegiate Conference: men's basketball, cross country, football, track, wrestling; women's basketball, cross country, golf, soccer, softball, swimming and diving, tennis, track, volleyball

**STUDENT ACTIVITIES:** Meet new friends, develop interpersonal skills and volunteer in more than 150 organizations: Academic, culture and language, Greek life, honorary, publications, religious, service,



sports and recreation, student government and many special interest clubs; club sports and activities: hockey, lacrosse, rugby, baseball, soccer, curling, dance, cheer team, fencing, martial arts

**HOUSING:** Eight residence halls and an on-campus apartment complex offer a variety of living options for first-year and returning students. Programmatic offerings, including nine Learning Communities, blend residential life with academic interests to create a strong sense of community and well-rounded college experience.

## HIGHLIGHTS

- Fargo-Moorhead is a thriving, close-knit community located off Interstates 94 and 29. Consistently ranked one of the safest and best communities in which to live, it's a bustling college community with more than 25,000 students.
- Students routinely earn honors for their academic achievements, including eight Goldwater Scholars named in 11 years.
- Students regularly win regional and national awards in film, mass communications, education, music, theater, art and design, and accounting.
- In a national survey, students say Minnesota State University Moorhead is committed to their personal and professional success through active, collaborative learning and faculty-mentored research and creative projects.

- The university boasts nine Minnesota Professors of the Year in the past 20 years, more than any other university in a five-state area, including the 2010 Outstanding U.S. Master's Universities and Colleges Professor.
- Same tuition rate for 12 to 19 credits is a smart investment. Eighty-five percent of students receive financial assistance, with an average aid package of \$9,685 and average scholarship equal to \$1,348.
- Professors teach 99 percent of classes and are advisors and mentors. Student-faculty ratio of 19-to-1 encourages undergraduates to participate in faculty-mentored research and creative projects, and 73 percent of classes have fewer than 30 students.
- Flexible offerings include 76 majors with 141 emphases, 31 areas of teacher licensure preparation and off-site programs in the Twin Cities.
- Wellness Center features state-of-the-art equipment, rock climbing wall, exercise studio, track and basketball courts.
- Winning teams include 2011 Northern Sun Intercollegiate Conference Indoor Track and Field Men's Championship Team, Track Athlete of the Year and Field Athlete of the Year, along with 88 Academic All-Conference honorees.
- Campus tours offered 9:30 a.m. and 1:30 p.m. Monday through Friday and select Saturdays.





# St. Cloud State University

[www.stcloudstate.edu](http://www.stcloudstate.edu)



**Admissions:** (320) 308-3981

**Toll-free:** 1-877-654-7278

**To arrange a campus visit:** 1-877-654-7278

**Mailing address:**

720 4th Ave. S.

St. Cloud, MN 56301-4498

**City/population:** St. Cloud/65,842

**Tuition and fees (2011-2012):** \$6,846

FAFSA code: 02377

**ENROLLMENT:**

Total number students served .....21,939

Full-time students .....69.4%

Part-time students .....30.6%

Percent male .....47.3%

Percent female .....52.7%

Percent students of color .....9.4%

**DEGREES OFFERED:** Associate degrees, bachelor's degrees, master's degrees, undergraduate and graduate certificates, specialist degrees, applied doctorate degrees

**LARGEST PROGRAMS:** Mass communications, criminal justice, management, finance and accounting

**UNIQUE PROGRAMS:** Applied behavior analysis, applied clinical research, cultural resource management (applied archaeology), engineering management, hydrology, land surveying and mapping, Latin American studies, meteorology, nuclear medicine technology, radiologic technology (X-ray and diagnostic imaging), real estate, regulatory affairs and services, small business management, statistics, travel and tourism, women's studies

**SPECIAL OPTIONS:**

**PROGRAM MINORS** – Developmental and adapted physical education, African studies, American Indian studies, Chicano/Chicana studies, Asian Pacific American studies, community health, computer networking, dance, data communications, East Asian studies, ethnic studies, geographic information systems, gerontology, human relations, military science, reading instruction, religious studies, technology studies, optics, teaching English as a Second Language, heritage preservation, forensic science

**EMPHASES & OPTIONS** – Rehabilitation counseling, community counseling, astrophysics, public history, public relations, publications, advertising, broadcasting, news editorial, linguistics, piano pedagogy, creative writing, applied statistics, actuarial science, construction management, electro-optics, applied sociology, graphic design

**PREPROFESSIONAL PROGRAMS** – Chiropractic, dentistry, law, medicine, optometry, physical therapy, physician assistant, podiatry, veterinary, agriculture, forestry, horticulture, dental hygiene, pharmacy, occupational therapy, mortuary science

**INTERCOLLEGIATE SPORTS:** Men's hockey, tennis, basketball, track and field, swimming and diving,



cross country, golf, baseball, football, wrestling; women's hockey, volleyball, tennis, basketball, soccer, track and field, Nordic skiing, swimming and diving, cross country, golf, softball

**STUDENT ACTIVITIES:** More than 250 student organizations in the arts, language and culture, politics and social concerns, honoraries, academic, religious and spiritual, service, recreational sports, student government and fraternities and sororities; club sports such as rowing, rugby, lacrosse and soccer offer additional intercollegiate competition

**HOUSING:** The university offers 10 residence halls on campus; apartments and other housing options are nearby.

## HIGHLIGHTS

- Nearly 200 undergraduate and graduate programs in business, fine arts and humanities, social sciences, education, and science and engineering.
- Thirty years ago, the Herberger Business School became nationally and internationally accredited.
- Designated as a National Center of Academic Excellence in Information Assurance Education by the Department of Homeland Security and the National Security Agency.

- One of nation's largest producers of teachers with a national award-winning co-teaching model to enhance classroom-training experience.
- \$11.3 million facility holds chemistry, biochemistry, biology, anatomy, immunology, advanced DNA and mammalian cell culture labs.
- Multicultural focus includes nearly 1,100 students from 86 countries on campus and study-abroad programs in 20 countries.
- Award-winning school newspaper, radio station and television station.
- More than \$112 million in scholarships, grants, loans and work opportunities are distributed to students each year. In 2009-2010, St. Cloud State had 4,381 Pell Grant recipients and 13,259 students receiving \$125.2 million in financial aid.
- One hour northwest of the Twin Cities in a metropolitan area of 189,000.
- Successful graduates abound, including concept designer TyRuben Ellingson, a 1982 graduate who had a creative hand in developing the visual effects that helped catapult the movie "Avatar" to unparalleled box-office success, and John Stumpf, a 1976 graduate, president and chief executive officer of Wells Fargo, one of the country's largest banks with 275,000 employees and 6,650 locations.





# Southwest Minnesota State University

[www.smsu.edu](http://www.smsu.edu)



**Admissions:** (507) 537-6286

**Toll-free:** 1-800-642-0684

**To arrange a campus visit:** (507) 537-6286

**Mailing address:**

1501 State St.

Marshall, MN, 56258

**City/population:** Marshall/13,680

**Tuition and fees (2011-2012):** \$7,424

**FAFSA code:** 002375

**ENROLLMENT:**

Total number students served .....	7,949
Full-time students .....	40.1%
Part-time students .....	59.9%
Percent male .....	41.7%
Percent female .....	58.3%
Percent students of color .....	5.8%

**DEGREES OFFERED:** Associate degrees, bachelor's degrees, master's degrees

**LARGEST PROGRAMS:** Business, education, exercise science, accounting, justice administration

**UNIQUE PROGRAMS:** Culinology, hospitality management, agronomy, global studies, radio and TV, professional writing and communication

**SPECIAL OPTIONS:**

**PROGRAM MINORS** – Adapted physical activity, adapted physical education and developmental adaptive physical education, anthropology, biology, classical studies, coaching, criminal justice, French, geography, geology, Hispanic studies, indigenous nations and Dakota studies, leadership studies, physics, rural and regional studies, social welfare, speech education, women's studies, writing

**EMPHASES & OPTIONS** – Biology, sports management, exercise science, health care management

**PREPROFESSIONAL PROGRAMS** – Agriculture, chiropractic, dentistry, engineering, law, medicine, ministry, mortuary science, nursing, occupational therapy, optometry, pharmacy, physical therapy, veterinary medicine

**INTERCOLLEGIATE SPORTS:** NCAA Division II member. Men's football, baseball, basketball, wrestling; coed wheelchair basketball; women's basketball, golf, soccer, softball, tennis, volleyball

**STUDENT ACTIVITIES:** More than 90 clubs and organizations, including student government, newspaper, literary magazine, radio and TV, fine arts; social, environmental, recreational, political, sports and academic clubs and organizations

**HOUSING:** More than 1,000 students live on campus in residence halls that offer numerous housing options, from single and traditional two-person rooms to apartment-style living. The newest, Sweetland Hall, features units with two two-person rooms sharing a common shower/restroom and sinks in each room.



## HIGHLIGHTS

Southwest Minnesota State University is a fully accredited liberal arts institution, the youngest of the seven four-year universities within the Minnesota State Colleges and Universities system. The university offers personal attention other universities can't match, a private school quality education at an affordable public school price. Southwest Minnesota State University is fully accessible and offers 53 undergraduate majors, 46 minors, four associate degree majors and three master's programs. A number of "two-plus-two" programs with community colleges in the system makes it seamless to move from an associate degree to a bachelor's degree.

- A challenging and supportive academic environment at a university where professors, not graduate assistants, teach.
- The world's only bachelor's degree in culinology, approved by the Research Chefs Association.
- Coed Living and Learning Communities, residential communities that share an academic or a special interest with the residents of their house. These include culinology house, academic success community, fine arts community, Mustang Traditions house and sustainability house.
- An informative website – [www.smsu.edu](http://www.smsu.edu) – that will answer your questions and features a virtual tour of campus from any location. The admission

site was named 2010 best in the nation by the education design website, eduStyle.

- A new Alumni Plaza, a central gathering place for students and a site for concerts, barbecues, speakers and out-of-classroom academic and social events.
- Renovated state-of-the-art science labs.
- More than \$110 million in construction, renovation and infrastructure upgrades the past nine years.
- Major visit days include Fall Preview Days, Oct. 20-21; A Day at SMSU, Nov. 19; Experience SMSU Day, Feb. 4, 2012; Spring Getaway Day, March 24, 2012. Call 1-800-642-0684 for more information.
- A campuswide Undergraduate Research Conference each December, where students' academic achievements and projects are highlighted.
- Agronomy and agribusiness management majors that meet the growing number of opportunities in agriculture and related industries; agronomy has a sustainability focus.
- Academic support services that augment an educational experience that includes small class sizes, a supportive faculty and staff, and opportunities to become involved.
- Online course offerings that help those with busy lifestyles earn a degree.
- A campus that embraces diversity; 175 international students from around the globe, representing 25 countries.



# Winona State University

[www.winona.edu](http://www.winona.edu)



**Admissions:** (507) 457-5100  
**Toll-free:** 1-800-DIAL-WSU (342-5978)  
**To arrange a campus visit:** 1-800-DIAL-WSU (342-5978)

**Mailing address:**  
P.O. Box 5838  
Winona, MN 55987  
**City/population:** Winona/27,592

**Tuition and fees (2011-2012)** \$7,203  
**FAFSA code:** 002394

## ENROLLMENT:

Total number students served .....	9,848
Full-time students .....	87.4%
Part-time students .....	12.6%
Percent male .....	38.7%
Percent female .....	61.3%
Percent students of color .....	5.9%

**DEGREES:** Associate degrees, bachelor's degrees, master's degrees, specialist degrees, applied doctorate degrees

**LARGEST PROGRAMS:** Nursing, business administration, elementary education, biology, exercise science

**UNIQUE PROGRAMS:** Child advocacy studies, composite materials engineering, master's and doctorate program in nursing, paralegal, aviation and airway science, music business, graphic design, business education

## SPECIAL OPTIONS:

**PROGRAM MINORS** – Adventure tourism, airway science aviation, biochemistry, business law, dance, electronics, geography, global studies, intercultural communication, international business, management, professional selling

**EMPHASES & OPTIONS** – Advertising, broadcasting, journalism, photojournalism, public relations, law enforcement, corrections, cell and molecular biology, ecology, water resources management

**PREPROFESSIONAL PROGRAMS** – Dentistry, engineering, law, medicine, mortuary science, optometry, pharmacy, physical therapy, physician assistant, veterinary medicine

**INTERCOLLEGIATE SPORTS:** Fifteen men's and women's NCAA Division II varsity sports: men's baseball, basketball, cross country, football, golf; women's basketball, cross country, golf, gymnastics, soccer, softball, tennis, track and field, volleyball

**STUDENT ACTIVITIES:** Student government and more than 210 social, service and professional clubs and organizations for academics, fine arts, athletics, media, culture and cultural issues, and religion. The university also sponsors professional cultural programs and student theatrical, musical and dance performances

**HOUSING:** More than 2,500 students choose to live on the Winona State University campus each year, and on-campus residents enjoy resources and



experiences that complement their academic work. The university features six residence halls, including the New Hall for upperclassmen, which opened in fall 2010. Three additional residence halls and the University Apartments at East Lake are connected by shuttle bus to the central Winona campus. Numerous off-campus rental housing opportunities are available within blocks of campus.

## HIGHLIGHTS

- **Nationally ranked:** Winona State University is ranked as the second public institution in Minnesota by U.S. News & World Report, has been listed among the "Best in the Midwest" by The Princeton Review for seven years in a row and has been recognized as one of America's 100 Best College Buys for 15 consecutive years.
- **Academically focused:** Winona State University offers 82 academic majors, 10 preprofessional options, eight master's options and one doctoral program at its campuses in Winona and Rochester.
- **e-Warrior Digital Life and Learning program:** Students select from one of three laptop models and enjoy wireless access from anywhere on campus.
- **Health and wellness:** The university's new Integrated Wellness Complex aligns health, wellness, academic and recreational programs and services into a single state-of-the-art facility on the university's tobacco-free campus.
- **Distinguished programs:** In spring 2011, the College of Business earned accreditation from the Association to Advance Collegiate Schools of Business International. This specialized accreditation provides a "stamp of approval" recognizing the value of a Winona State University education.
- **Winona State University Goes Green:** Sustainability is a core universitywide commitment. The university is a signatory of the American Colleges and Universities Presidents Climate Commitment and a partner in Sustain Winona, a community-based initiative dedicated to energy conservation, renewable energy technologies and pollution prevention strategies.
- **Transforming education:** As one of 14 institutions partnering with the Bush Foundation, Winona State University's Teach 21 is set to receive up to \$4 million over the next decade to increase educational achievement in Minnesota, North Dakota and South Dakota.
- **Path to Purple:** The university works with Rochester Community and Technical College to offer programs in which students are able to begin their undergraduate education at the college and transfer to the university's Winona or Rochester campus.
- **Rochester campus:** In addition to offering upper-division undergraduate degree programs and courses, the Rochester campus also offers an array of graduate programs in the colleges of education and nursing, including a doctorate in nursing practice.
- **Come to visit:** Daily campus visits at 9 a.m. and 1 p.m. Monday through Friday. Visits include tours of the campus and residence halls and a meeting with an admissions counselor.





# Find the campus that's right for you

## Students: Tips for successful campus visits

- Call to schedule a campus tour or join a regular group tour.
- List your questions in a small notebook to take along.
- Talk to faculty members in the programs that interest you. Ask their advice for future students.
- Take the opportunity to talk with current students. Ask about their favorite things about the campus and least favorite things.
- Find out about student activities, student support services such as tutoring, and tuition and fees.
- Look in the library, computer labs, cafeterias and bookstore, and check out the surrounding neighborhood.
- Ask to see a dorm room if you plan to live on campus, or ask about off-campus options.

**Congratulations! You've taken a big step toward choosing a campus that's right for you.**

## Parents and mentors: How to help your student

- It's never too early to start searching for the right college or university.
- Talk with your student about why it's smart to continue education after high school.
- Ask what's important to your student in choosing a college or university and what careers seem interesting.
- Encourage your student to look at college and university websites and to request information.
- Attend college fairs together and talk with the college representatives. They're eager to tell you about their campuses.
- Help schedule campus visits. Go when classes are in session, if possible, so you can meet students and faculty and see typical campus life.
- Ask about student services that support student success.
- Find out about tuition and fees and how scholarships and financial aid can help reduce costs. Fill out the Free Application for Federal Student Aid, or FAFSA form, as soon as possible after Jan. 1 in 12th grade. See [www.fafsa.ed.gov](http://www.fafsa.ed.gov).

**You'll be a great coach!**



**Minnesota**  
STATE COLLEGES  
& UNIVERSITIES

Wells Fargo Place  
30 7th St. E., Suite 350  
St. Paul, Mn 55101-7804

For TTY communication, contact Minnesota Relay Service at 7-1-1 or 1-800-627-3529. Upon request, this document is available in alternative formats by calling one of the numbers above.

The Minnesota State Colleges and Universities system is an Equal Opportunity employer and educator.

Twin Cities: (651) 201-1800  
Toll free: 1-888-667-2848  
[www.mnscu.edu](http://www.mnscu.edu)



**Technical notes:** "Tuition and fees" is annual tuition based on a full-time credit load of 15 credits per semester and fees as approved by the system's Board of Trustees in June 2011. Enrollment data is from 2009-2010, the most recent data available. "Total number students served" is unduplicated annual headcount. "Full-time students" are undergraduates enrolled in 12 or more credits per semester. "Part-time students" are undergraduates enrolled in 11 or fewer credits per semester. Percentages for male and female students and students of color are percentages of unduplicated headcount based on known factors. City population figures are from the state demographer's office.

Sources: Minnesota State Colleges and Universities Research, Planning and Effectiveness; Minnesota Department of Administration

Printed on paper  
certified by FSC  
(Forest Stewardship  
Council)





**Minnesota**  
STATE COLLEGES  
& UNIVERSITIES

[www.mnscu.edu](http://www.mnscu.edu)