

Report on 2010 SCORE Programs

A summary of recycling and waste management in Minnesota



Minnesota Pollution Control Agency

December 2011

Legislative Charge

In 1989, the Legislature adopted comprehensive waste reduction and recycling legislation based on recommendations of the Governor's Select Committee on Recycling and the Environment (SCORE). This set of laws, Minn. Stat. § 115A.551-115A.557, commonly referred to as SCORE, initiated a stable source of state funding for recycling programs, as well as waste reduction and the improved management of household hazardous wastes, yard waste, and problem materials. SCORE legislation provides grant dollars, along with funding to counties and local government for long-term flexible programs.

Authors

Arlene Vee

Contributors / acknowledgements (if any)

Don Kyser

Estimated cost of preparing this report *(as required by Minn. Stat. § 3.197) including staff time, writing, editing, and printing is \$10,750.*

The MPCA is reducing printing and mailing costs by using the Internet to distribute reports and information to wider audience. Visit our web site for more information.

MPCA reports are printed on 100% post-consumer recycled content paper manufactured without chlorine or chlorine derivatives.

Minnesota Pollution Control Agency

520 Lafayette Road North | Saint Paul, MN 55155-4194 | www.pca.state.mn.us | 651-296-6300
Toll free 800-657-3864 | TTY 651-282-5332

This report is available in alternative formats upon request, and online at www.pca.state.mn.us

Document number: lrp-p2s-3sy11

Contents

Summary	1
<i>MSW generation in Minnesota</i>	1
<i>Per capita MSW generation</i>	2
<i>On-site disposal and problem materials not recycled</i>	2
<i>Recycling and waste reduction</i>	2
<i>MSW processing and disposal</i>	3
<i>Funding of SCORE programs</i>	4
<i>2011 Solid Waste Policy Report</i>	4
Appendix A: County SCORE Survey Responses.....	5

Summary

In 1989, the Governor's Select Committee on Recycling and the Environment (SCORE), recommended to the Legislature to adopt a comprehensive set of laws, commonly referred to as SCORE. This act initiated a state funding source for recycling programs, as well as waste reduction, management of household hazardous wastes, and problem materials. SCORE legislation and grant dollars, along with funding from counties and local government, provide the basis for long-term, flexible programs.

This report on the 2010 SCORE programs summarizes information submitted by all 87 counties and the Western Lake Superior Sanitary District on waste management efforts, including waste reduction activities, recycling, household hazardous waste programs, and problem materials collection. The report and information on SCORE programs are available at www.pca.state.mn.us/score.

MSW generation in Minnesota

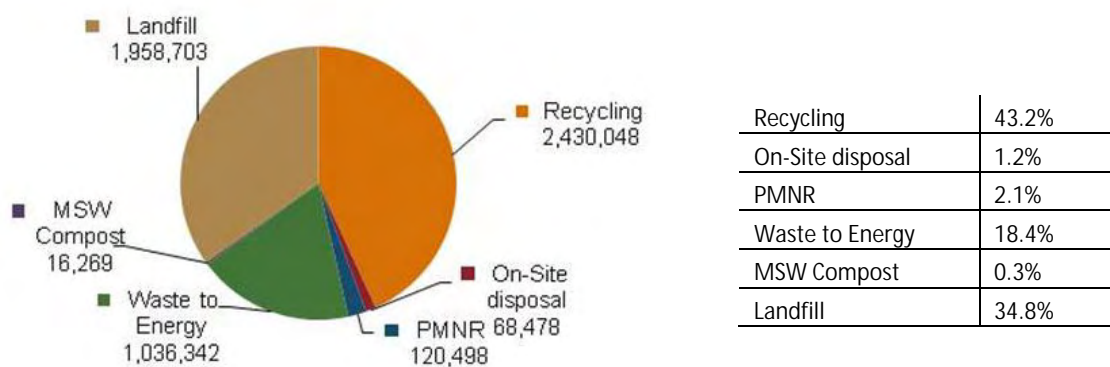
Mixed municipal solid waste (MSW) is defined by statute as garbage, refuse, and other solid waste from residential, commercial, industrial, and community activities that the generator of the waste aggregates for collection. It includes common materials found in household and commercial garbage, such as packaging materials, containers, food discards and other compostable materials, plastic, paper, etc.

MSW does not include auto hulks, street sweepings, ash, construction debris, mining waste, sludge, tree and agricultural wastes, tires, lead acid batteries, motor and vehicle fluids and filters, and other materials collected, processed, and disposed of as separate waste streams (Minn. Stat. § 115A.03, subd. 21).

MSW includes wastes recycled and discarded (including tons sent to disposal and resource recovery facilities), tons disposed of on-site (burn barrels or farm dumps), and problem materials not recycled (PMNR).

Minnesota's MSW generation totaled 5.63 million tons in 2010, a 0.4 percent decrease from 2009. The seven Metro counties generate 57 percent of the waste, with the Greater Minnesota counties generating the remaining 43 percent.

Figure 1: Total MSW generation in Minnesota



Per capita MSW generation

Waste generation continues to decrease slightly. In 2010, the Minnesota per capita rate decreased insignificantly to 1.062 tons per person (2,123 pounds/person/year) from 1.066 tons per person in 2009, or .01 percent.

In 2010, Minnesota's population increased to 5,303,925, an increase of only 2,983 people, or .01 percent from 2009.

On-site disposal and problem materials not recycled

On-site disposal of MSW, either burning or burying, has been an ongoing practice for many years. Although it is against the law for most people, some farmers are allowed to burn or bury household garbage under existing Minn. Stat. §§ 88.171 and §§17.135.

In the 2010 SCORE survey, counties reported an estimated 68,478 tons of waste disposed of on-site, or one percent of the total MSW generated. This is a decline from 2009 and can be attributed to increased awareness and education from the MPCA's Burn Barrel Reduction Campaign and increased investment in local programs by counties, cities, and townships, and through campaign grants to counties.

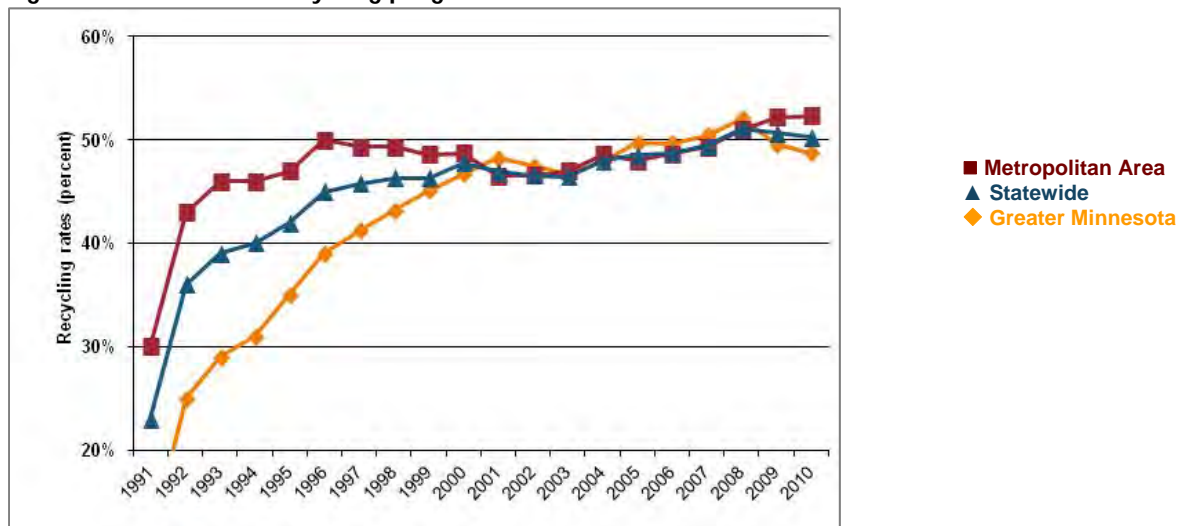
PMNR makes up two percent of the total MSW generation or 120,498 tons for 2010. PMNR includes five materials banned from disposal in Minnesota (vehicle batteries, tires, major appliances, motor oil, and oil filters).

Recycling and waste reduction

Minnesota's recycling rate, a national leader, reflects strong local and state investment and good public participation. In 2010, 2.43 million tons of materials were recycled, or 43.2 percent (base recycling rate) of the total MSW generated. When credits for yard waste and waste reduction efforts are included, the recycling rate increases to 50.3 percent. The base recycling rate is a more accurate measure of progress as it is the actual percentage of materials recycled.

While this rate reflects the significant investment in our recycling system, as well as strong material markets, evidence suggests much more could be done to recover millions of tons of discarded recyclable and organic materials still disposed of each year.

Figure 2: Minnesota's recycling progress



Recycling tonnages decreased 1.1 percent from 2009. In 2010, 66 percent of the reported recycling tonnages is documented, as either residential; documented commercial/industrial/institutional; and mechanical/hand separated. The remaining 34 percent is estimated commercial/industrial/institutional recycling.

In 2010, textiles saw the largest decrease in recycling of 23 percent while both organics and plastics increased by 11 percent from 2009's reported tonnages.

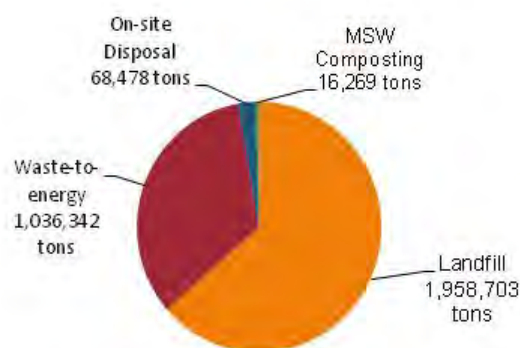
Table 1: Material types recycled in tons

Banned	124,789.23
Glass	126,022.02
Metal	411,514.97
Organic	197,909.50
Other	589,467.86
Paper	902,163.01
Plastics	63,227.90
Textiles	14,953.84

MSW processing and disposal

In Minnesota, waste is managed through four main disposal methods: landfills, MSW composting, resource recovery facilities, and on-site disposal. In 2010, processed or disposed MSW totaled 3 million tons.

Figure 3: MSW disposal



Landfill	63%
Waste-to-energy	34%
On-site Disposal	2%
MSW Compost	1%

The amount of MSW processed and disposed of increased in 2010, by 6,367 tons, or 0.02 percent.

In 2010, 62 percent of the amount of total waste was diverted from landfilling by using management practices higher on the hierarchy; recycling, composting of yard waste and food waste, and resource recovery methods. Statewide, however, the amount of materials processed at a resource recovery facility or MSW composting facility decreased in 2010. This trend did not hold true in the northwest region of the state, as there is an increase of the amount of MSW being processed at resource recovery facilities for 2009 and in 2010.

In 2010, the amount of waste leaving Minnesota decreased. In 2010, 380,479 tons of waste was sent to Iowa, Wisconsin, North Dakota, and South Dakota. This is a drop of 21 percent from 2009, or approximately 98,000 tons. The amount of waste sent from Minnesota to Wisconsin was the most significant decrease by approximately 97,000 tons. The decrease of Minnesota waste to Wisconsin may be contributed by many factors (facility locations, hauling companies in operation, existing contracts, surcharges and tip fees, and gas prices). The primary reasons, most likely, are the economy, fuel costs, and the new Wisconsin Solid Waste Tax that was put on all out-of-state waste coming into Wisconsin.

Funding of SCORE programs

In 2010, a total of \$57.7 million was spent on SCORE expenditures. State disbursement equaled \$14.3 million dollars, which is approximately 25 percent of the amount spent on SCORE-related programs. In 2010, county funds continued to exceed this match, spending more than \$43.4 million or 75 percent of the amount spent toward SCORE-related activities. This investment is in addition to undocumented dollars spent by other local units of government, such as cities and townships, on programs such as recycling, household hazardous waste collection, and waste education.

Money from the state is passed on to the county level in the form of annual block grants. Each county is required to match the funding from the Legislature with a local contribution of at least 25 percent.

Inflation and the poor economy have affected the counties' recycling programs. Counties continue to face challenges for collecting materials and delivering them to markets. Decreases in funding are not covering costs of existing recycling programs, and counties are hard pressed to expand recycling programs.

Counties are reporting that equipment and buildings are getting old and obsolete, and are in need of being replaced and/or updated. Millions of tons of recyclable materials remain in the waste stream along with the missed economic and environmental benefits associated with recycling.

2011 Solid Waste Policy Report

Every other year, the MPCA makes solid waste policy recommendations to the Legislature in the form of a solid waste policy report. The *2011 Solid Waste Policy Report* highlights policy recommendations and discusses other subsequent recommendations. Go to: www.pca.state.mn.us/aj0r879

Appendix A:

County Score Survey Responses

County Survey Responses
Finances: Revenues (Part 1)

County	CY2009 revenue carried over	Adjustment to carryover	General revenue	Service fee	Processing facility tip fee	Land disposal facility surcharge
Aitkin	\$222,386	0	\$139,524	\$0	\$0	\$0
Anoka	\$0	0	\$15,855	\$1,041,243	\$0	\$0
Becker	(\$96,353)	96,353	\$0	\$18,640	\$0	\$0
Beltrami	\$63	0	\$0	\$520,645	\$0	\$0
Benton	\$0	0	\$0	\$177,673	\$0	\$0
Big Stone	(\$39,846)	39,846	\$117,617	\$26,670	\$0	\$0
Blue Earth	\$0	0	\$117,582	\$30	\$0	\$0
Brown	\$0	0	\$294,630	\$0	\$0	\$0
Carlton	(\$52,120)	52,120	\$0	\$0	\$76,216	\$0
Carver	\$0	0	\$0	\$377,476	\$0	\$0
Cass	\$0	0	\$0	\$628,630	\$0	\$0
Chippewa	\$0	0	\$121,937	\$0	\$0	\$0
Chisago	\$0	0	\$0	\$156,673	\$0	\$0
Clay	\$200,005	0	\$0	\$529,887	\$0	\$0
Clearwater	\$0	0	\$0	\$72,683	\$0	\$0
Cook	\$0	0	\$206,365	\$0	\$0	\$0
Cottonwood	\$229,474	0	\$185,464	\$0	\$0	\$0
Crow Wing	\$0	0	\$0	\$497,395	\$85,024	\$0
Dakota	(\$1)	1	\$0	\$0	\$0	\$1,304,941
Dodge	\$0	0	\$165,281	\$42,084	\$0	\$0
Faribault	\$5,869	0	\$36,534	\$0	\$0	\$0
Fillmore	(\$5,983)	5,983	\$0	\$0	\$0	\$0
Freeborn	(\$2,559)	2,559	\$370,528	\$0	\$0	\$0
Goodhue	\$260,995	0	\$44,986	\$0	\$0	\$0
Grant	\$63,420	1	\$36,256	\$130,280	\$0	\$0
Hennepin	\$0	0	\$0	\$5,107,539	\$157,368	\$0
Houston	\$0	0	\$2,501	\$0	\$0	\$0
Hubbard	\$0	0	\$499,298	\$0	\$0	\$0
Isanti	\$119,430	0	\$24,140	\$0	\$0	\$0
Itasca	\$0	0	\$377,814	\$0	\$0	\$0
Jackson	\$163,530	0	\$13,988	\$0	\$0	\$0
Kanabec	\$82,613	0	\$13,868	\$0	\$0	\$0
Kandiyohi	\$0	0	\$0	\$208,082	\$0	\$0
Kittson	(\$26,139)	26,139	\$96,617	\$0	\$49,404	\$0
Koochiching	\$0	0	\$92,971	\$93,446	\$10,301	\$0
Lac qui Parle	\$150,340	0	\$97,370	\$0	\$0	\$0
Lake	\$0	0	\$124,809	\$5,335	\$0	\$0
Lake of The Woods	\$0	0	\$142,151	\$0	\$0	\$0
Le Sueur	\$0	0	\$99,243	\$0	\$0	\$0
Lincoln	\$36,646	0	\$123,283	\$150	\$0	\$0
Lyon	\$0	0	\$0	\$243,951	\$0	\$96,638
Mahnomen	\$31,197	0	\$13,988	\$0	\$0	\$0
Marshall	\$0	0	\$14,954	\$0	\$0	\$0
Martin	\$88,937	0	\$235,457	\$0	\$0	\$0
McLeod	\$0	0	\$0	\$1,256	\$229,760	\$1,021,311
Meeker	\$24,808	0	\$15,000	\$0	\$0	\$0

County Survey Responses
Finances: Revenues (Part 1)

County	CY2009 revenue carried over	Adjustment to carryover	General revenue	Service fee	Processing facility tip fee	Land disposal facility surcharge
Mille Lacs	\$50,637	0	\$49,195	\$0	\$0	\$0
Morrison	\$0	0	\$168,130	\$0	\$0	\$0
Mower	(\$44,100)	44,100	\$0	\$247,618	\$0	\$0
Murray	(\$8,078)	8,078	\$13,750	\$0	\$0	\$0
Nicollet	\$0	0	\$283,620	\$0	\$0	\$0
Nobles	(\$56,815)	56,815	\$1,958	\$80,042	\$0	\$224,585
Norman	\$0	0	\$50,315	\$0	\$0	\$0
Olmsted	(\$159,568)	159,568	\$0	\$0	\$0	\$0
Otter Tail	\$15,300	0	\$0	\$499,768	\$0	\$0
Pennington	\$102,580	0	\$13,987	\$0	\$0	\$0
Pine	\$109,612	0	\$119,469	\$0	\$0	\$0
Pipestone	\$0	0	\$137,530	\$0	\$0	\$0
Polk	\$238,915	0	\$0	\$260,742	\$0	\$0
Pope/Douglas	(\$21,039)	21,039	\$250,000	\$0	\$0	\$0
Ramsey	\$639,864	0	\$0	\$4,491,909	\$0	\$0
Red Lake	\$0	0	\$18,849	\$0	\$0	\$0
Redwood	(\$7,127)	7,127	\$340,026	\$1,750	\$0	\$0
Renville	\$25,295	0	\$220,525	\$0	\$2,536	\$0
Rice	(\$249,100)	249,100	\$0	\$641,010	\$0	\$0
Rock	(\$989)	989	\$70,996	\$0	\$0	\$0
Roseau	(\$94,105)	94,105	\$0	\$0	\$0	\$0
Scott	\$572,249	0	\$80,055	\$0	\$0	\$0
Sherburne	\$133,607	0	\$0	\$0	\$0	\$120,492
Sibley	\$0	0	\$128,521	\$0	\$0	\$0
St. Louis - partial	\$0	0	\$0	\$505,662	\$0	\$0
Stearns	\$21,547	0	\$73,615	\$84,741	\$0	\$0
Steele	\$0	0	\$0	\$391,164	\$0	\$0
Stevens	(\$15,607)	15,607	\$78,531	\$0	\$0	\$0
Swift	\$17,883	0	\$187,074	\$0	\$0	\$0
Todd	\$0	0	\$264,339	\$0	\$0	\$0
Traverse	(\$47,853)	47,853	\$13,988	\$0	\$0	\$0
Wabasha	\$0	0	\$33,528	\$0	\$0	\$59
Wadena	\$0	0	\$0	\$92,946	\$20,993	\$0
Waseca	\$0	0	\$0	\$71,412	\$0	\$0
Washington	\$0	0	\$0	\$1,133,312	\$0	\$0
Watsonwan	\$396,695	0	\$13,087	\$167,972	\$0	\$0
Wilkin	\$0	0	\$0	\$62,607	\$0	\$0
Winona	(\$35,380)	35,380	\$273,238	\$511,674	\$0	\$0
WLSSD	\$0	0	\$0	\$1,824,822	\$355,293	\$0
Wright	\$728,124	0	\$74,059	\$20,605	\$0	\$0
Yellow Medicine	\$17,760	0	\$0	\$53,828	\$0	\$23,981
Metro Area	\$773,470	\$1	\$15,855	\$12,151,479	\$157,368	\$1,425,433
Greater Minn.	\$3,013,549	\$962,762	\$6,782,543	\$8,871,874	\$829,528	\$1,366,574
Minnesota	\$3,787,019	\$962,763	\$6,798,397	\$21,023,353	\$986,896	\$2,792,008

County Survey Responses
Finances: Revenues (Part 1)

County	SCORE pass-through	Grants	HHW funding	Material sales	Other	Total revenue
Aitkin	\$55,950	\$2,179	\$2,772	\$0	\$1,100	\$423,911
Anoka	\$824,534	\$130,874	\$0	\$12,467	\$58,078	\$2,083,051
Becker	\$79,503	\$0	\$33,952	\$0	\$23,518	\$155,613
Beltrami	\$108,653	\$0	\$6,709	\$0	\$0	\$636,070
Benton	\$98,453	\$0	\$484	\$0	\$9,028	\$285,638
Big Stone	\$55,950	\$0	\$2,400	\$0	\$600	\$203,237
Blue Earth	\$149,855	\$0	\$54,265	\$0	\$0	\$321,732
Brown	\$64,285	\$580	\$3,702	\$0	\$12,399	\$375,596
Carlton	\$84,414	\$17,276	\$5,998	\$3,700	\$190	\$187,795
Carver	\$223,198	\$112,261	\$0	\$0	\$253,756	\$966,691
Cass	\$70,342	\$0	\$6,044	\$0	\$0	\$705,016
Chippewa	\$55,950	\$0	\$3,204	\$0	\$2,497	\$183,588
Chisago	\$124,500	\$0	\$23,253	\$2,025	\$23,500	\$329,950
Clay	\$139,050	\$0	\$0	\$2,867	\$379	\$872,188
Clearwater	\$55,950	\$0	\$5,052	\$0	\$0	\$133,685
Cook	\$55,950	\$0	\$0	\$54,567	\$0	\$316,882
Cottonwood	\$55,950	\$0	\$0	\$781	\$22,199	\$493,868
Crow Wing	\$153,178	\$0	\$9,664	\$0	\$0	\$745,261
Dakota	\$985,614	\$0	\$167,383	\$0	\$0	\$2,457,938
Dodge	\$55,950	\$7,888	\$600	\$122,487	\$1,216	\$395,506
Faribault	\$55,950	\$0	\$0	\$0	\$6,620	\$104,973
Fillmore	\$55,950	\$0	\$0	\$0	\$13,750	\$69,700
Freeborn	\$77,060	\$0	\$6,732	\$613	\$2,575	\$457,508
Goodhue	\$113,821	\$0	\$6,220	\$252,193	\$0	\$678,214
Grant	\$55,950	\$0	\$0	\$0	\$11,969	\$297,876
Hennepin	\$2,891,767	\$372,889	\$81,770	\$1,631,009	\$18,665	\$10,261,007
Houston	\$55,950	\$0	\$5,606	\$114,988	\$17,803	\$196,848
Hubbard	\$55,950	\$0	\$0	\$32,654	\$0	\$587,902
Isanti	\$96,560	\$0	\$1,299	\$0	\$0	\$241,429
Itasca	\$109,898	\$0	\$4,325	\$5,193	\$0	\$497,230
Jackson	\$55,950	\$0	\$0	\$1,073	\$13,864	\$248,405
Kanabec	\$55,950	\$0	\$449	\$0	\$0	\$152,880
Kandiyohi	\$102,542	\$0	\$60,410	\$370,797	\$91,938	\$833,769
Kittson	\$55,950	\$0	\$4,651	\$54,642	\$5,651	\$266,915
Koochiching	\$55,950	\$0	\$3,353	\$29,460	\$0	\$285,482
Lac qui Parle	\$55,950	\$0	\$2,400	\$0	\$1,886	\$307,946
Lake	\$55,950	\$0	\$5,007	\$33,531	\$127	\$224,759
Lake of The Woods	\$55,950	\$0	\$0	\$45,100	\$0	\$243,202
Le Sueur	\$69,228	\$0	\$2,978	\$26,482	\$14,539	\$212,470
Lincoln	\$55,950	\$0	\$0	\$0	\$20,999	\$237,029
Lyon	\$61,500	\$0	\$51,551	\$0	\$35,791	\$489,431
Mahnomen	\$55,950	\$0	\$2,709	\$0	\$0	\$103,843
Marshall	\$55,950	\$0	\$0	\$27,525	\$7,949	\$106,378
Martin	\$55,950	\$0	\$0	\$0	\$5,630	\$385,974
McLeod	\$91,762	\$0	\$12,474	\$467,702	\$75,375	\$1,899,641
Meeker	\$57,039	\$0	\$3,330	\$0	\$949	\$101,126
Mille Lacs	\$65,290	\$0	\$2,385	\$0	\$0	\$167,507

County Survey Responses
Finances: Revenues (Part 1)

County	SCORE pass-through	Grants	HHW funding	Material sales	Other	Total revenue
Morrison	\$80,908	\$0	\$5,600	\$0	\$231,652	\$486,290
Mower	\$94,056	\$0	\$7,822	\$202,426	\$900	\$552,822
Murray	\$55,950	\$0	\$0	\$0	\$1,287	\$70,987
Nicollet	\$79,209	\$0	\$5,340	\$0	\$7,665	\$375,833
Nobles	\$55,950	\$0	\$0	\$0	\$17,559	\$380,094
Norman	\$55,950	\$0	\$2,939	\$0	\$0	\$109,204
Olmsted	\$351,386	\$0	\$117,388	\$0	\$904,659	\$1,373,433
Otter Tail	\$140,000	\$0	\$34,909	\$721,388	\$0	\$1,411,365
Pennington	\$55,950	\$0	\$0	\$0	\$0	\$172,517
Pine	\$70,066	\$0	\$0	\$0	\$0	\$299,147
Pipestone	\$55,950	\$0	\$0	\$0	\$29,704	\$223,184
Polk	\$76,117	\$0	\$6,284	\$86,745	\$6,991	\$675,794
Pope/Douglas	\$145,412	\$0	\$14,130	\$2,280	\$600	\$412,422
Ramsey	\$1,277,612	\$171,539	\$0	\$0	\$160,558	\$6,741,483
Red Lake	\$55,950	\$0	\$4,852	\$3,136	\$0	\$82,787
Redwood	\$55,950	\$0	\$37,721	\$224,066	\$54,752	\$714,265
Renville	\$55,950	\$0	\$0	\$0	\$0	\$304,306
Rice	\$155,571	\$0	\$24,378	\$355,697	\$106,387	\$1,283,043
Rock	\$55,950	\$0	\$0	\$0	\$11,926	\$138,872
Roseau	\$55,950	\$0	\$5,478	\$36,403	\$62,999	\$160,830
Scott	\$317,831	\$0	\$0	\$0	\$0	\$970,135
Sherburne	\$217,245	\$0	\$4,279	\$0	\$1,939	\$477,563
Sibley	\$55,950	\$0	\$1,943	\$20,660	\$12,531	\$219,605
St. Louis - partial	\$230,367	\$0	\$15,480	\$17,837	\$632,252	\$1,401,598
Stearns	\$364,909	\$0	\$5,713	\$0	\$38,730	\$589,256
Steele	\$90,750	\$0	\$4,629	\$0	\$2,880	\$489,423
Stevens	\$55,950	\$0	\$0	\$0	\$415	\$134,896
Swift	\$55,950	\$0	\$2,400	\$157,835	\$0	\$421,142
Todd	\$59,522	\$0	\$4,499	\$119,917	\$0	\$448,277
Traverse	\$55,950	\$0	\$0	\$0	\$0	\$69,938
Wabasha	\$55,950	\$0	\$5,000	\$0	\$0	\$94,537
Wadena	\$55,950	\$0	\$0	\$0	\$0	\$169,890
Waseca	\$55,475	\$0	\$2,959	\$256,450	\$1,145	\$387,441
Washington	\$581,645	\$143,756	\$0	\$0	\$115,448	\$1,974,161
Watonwan	\$55,950	\$0	\$2,762	\$0	\$14,711	\$651,177
Wilkin	\$55,950	\$0	\$0	\$154,110	\$200	\$272,867
Winona	\$123,657	\$0	\$22,411	\$49,171	\$8,349	\$988,500
WLSSD	\$252,236	\$57,773	\$227,413	\$105,944	\$78,984	\$2,902,466
Wright	\$296,236	\$1,486	\$12,251	\$30,068	\$2,338	\$1,165,167
Yellow Medicine	\$55,950	\$0	\$0	\$0	\$1,988	\$153,507
Metro Area	\$7,001,615	\$931,319	\$253,432	\$1,643,476	\$608,444	\$24,961,893
Greater Minn.	\$7,250,541	\$87,182	\$908,278	\$4,192,513	\$2,655,646	\$36,920,991
Minnesota	\$14,252,156	\$1,018,501	\$1,161,710	\$5,835,989	\$3,264,090	\$61,882,883

County Survey Responses
Finances: Revenue Summary

County	Adjusted CY2009 revenue (carried over)	CY2010 revenue	Total revenue
Aitkin	\$222,386	\$201,525	\$423,911
Anoka	\$0	\$2,083,051	\$2,083,051
Becker	\$0	\$155,613	\$155,613
Beltrami	\$63	\$636,007	\$636,070
Benton	\$0	\$285,638	\$285,638
Big Stone	\$0	\$203,237	\$203,237
Blue Earth	\$0	\$321,732	\$321,732
Brown	\$0	\$375,596	\$375,596
Carlton	\$0	\$187,795	\$187,795
Carver	\$0	\$966,691	\$966,691
Cass	\$0	\$705,016	\$705,016
Chippewa	\$0	\$183,588	\$183,588
Chisago	\$0	\$329,950	\$329,950
Clay	\$200,005	\$672,183	\$872,188
Clearwater	\$0	\$133,685	\$133,685
Cook	\$0	\$316,882	\$316,882
Cottonwood	\$229,474	\$264,394	\$493,868
Crow Wing	\$0	\$745,261	\$745,261
Dakota	\$0	\$2,457,938	\$2,457,938
Dodge	\$0	\$395,506	\$395,506
Faribault	\$5,869	\$99,104	\$104,973
Fillmore	\$0	\$69,700	\$69,700
Freeborn	\$0	\$457,508	\$457,508
Goodhue	\$260,995	\$417,219	\$678,214
Grant	\$63,421	\$234,455	\$297,876
Hennepin	\$0	\$10,261,007	\$10,261,007
Houston	\$0	\$196,848	\$196,848
Hubbard	\$0	\$587,902	\$587,902
Isanti	\$119,430	\$121,999	\$241,429
Itasca	\$0	\$497,230	\$497,230
Jackson	\$163,530	\$84,875	\$248,405
Kanabec	\$82,613	\$70,267	\$152,880
Kandiyohi	\$0	\$833,769	\$833,769
Kittson	\$0	\$266,915	\$266,915
Koochiching	\$0	\$285,482	\$285,482
Lac qui Parle	\$150,340	\$157,606	\$307,946
Lake	\$0	\$224,759	\$224,759
Lake of The Woods	\$0	\$243,202	\$243,202
Le Sueur	\$0	\$212,470	\$212,470
Lincoln	\$36,646	\$200,383	\$237,029
Lyon	\$0	\$489,431	\$489,431
Mahnomen	\$31,197	\$72,646	\$103,843
Marshall	\$0	\$106,378	\$106,378
Martin	\$88,937	\$297,037	\$385,974
McLeod	\$0	\$1,899,641	\$1,899,641
Meeker	\$24,808	\$76,318	\$101,126

County Survey Responses
Finances: Revenue Summary

County	Adjusted CY2009 revenue (carried over)	CY2010 revenue	Total revenue
Mille Lacs	\$50,637	\$116,870	\$167,507
Morrison	\$0	\$486,290	\$486,290
Mower	\$0	\$552,822	\$552,822
Murray	\$0	\$70,987	\$70,987
Nicollet	\$0	\$375,833	\$375,833
Nobles	\$0	\$380,094	\$380,094
Norman	\$0	\$109,204	\$109,204
Olmsted	\$0	\$1,373,433	\$1,373,433
Otter Tail	\$15,300	\$1,396,065	\$1,411,365
Pennington	\$102,580	\$69,937	\$172,517
Pine	\$109,612	\$189,535	\$299,147
Pipestone	\$0	\$223,184	\$223,184
Polk	\$238,915	\$436,879	\$675,794
Pope/Douglas	\$0	\$412,422	\$412,422
Ramsey	\$639,864	\$6,101,619	\$6,741,483
Red Lake	\$0	\$82,787	\$82,787
Redwood	\$0	\$714,265	\$714,265
Renville	\$25,295	\$279,011	\$304,306
Rice	\$0	\$1,283,043	\$1,283,043
Rock	\$0	\$138,872	\$138,872
Roseau	\$0	\$160,830	\$160,830
Scott	\$572,249	\$397,886	\$970,135
Sherburne	\$133,607	\$343,956	\$477,563
Sibley	\$0	\$219,605	\$219,605
St. Louis - partial	\$0	\$1,401,598	\$1,401,598
Stearns	\$21,547	\$567,709	\$589,256
Steele	\$0	\$489,423	\$489,423
Stevens	\$0	\$134,896	\$134,896
Swift	\$17,883	\$403,259	\$421,142
Todd	\$0	\$448,277	\$448,277
Traverse	\$0	\$69,938	\$69,938
Wabasha	\$0	\$94,537	\$94,537
Wadena	\$0	\$169,890	\$169,890
Waseca	\$0	\$387,441	\$387,441
Washington	\$0	\$1,974,161	\$1,974,161
Watsonwan	\$396,695	\$254,482	\$651,177
Wilkin	\$0	\$272,867	\$272,867
Winona	\$0	\$988,500	\$988,500
WLSSD	\$0	\$2,902,466	\$2,902,466
Wright	\$728,124	\$437,043	\$1,165,167
Yellow Medicine	\$17,760	\$135,747	\$153,507
Metro Area	\$773,471	\$24,188,422	\$24,961,893
Greater Minn.	\$3,976,311	\$32,944,679	\$36,920,991
Minnesota	\$4,749,782	\$57,133,101	\$61,882,883

County Survey Responses
Finances: Expenditures by program area (Part 2)

County	Planning & administration	Recycling	Yard waste	HHW and problem materials	Source reduction
Aitkin	\$142,030	\$50,549	\$370	\$11,619	\$643
Anoka	\$698,398	\$27,110	\$78,980	\$364,025	\$30,091
Becker	\$81,137	\$142,558	\$5	\$164,632	\$0
Beltrami	\$0	\$604,769	\$0	\$30,024	\$0
Benton	\$121,427	\$227	\$0	\$67,150	\$0
Big Stone	\$65,636	\$117,421	\$0	\$11,817	\$0
Blue Earth	\$62,382	\$173,671	\$0	\$73,888	\$0
Brown	\$34,213	\$300,707	\$0	\$37,762	\$0
Carlton	\$74,918	\$100,839	\$6,499	\$49,629	\$0
Carver	\$346,175	\$61,464	\$67,784	\$388,240	\$2,768
Cass	\$100,000	\$526,489	\$0	\$78,527	\$0
Chippewa	\$34,240	\$123,320	\$0	\$24,687	\$0
Chisago	\$138,069	\$50,043	\$0	\$108,584	\$0
Clay	\$153,012	\$309,246	\$58,675	\$122,558	\$0
Clearwater	\$22,418	\$79,762	\$872	\$28,510	\$0
Cook	\$243,351	\$64,148	\$0	\$8,669	\$0
Cottonwood	\$146,688	\$62,841	\$0	\$23,108	\$0
Crow Wing	\$243,579	\$22,028	\$12,072	\$130,553	\$0
Dakota	\$485,399	\$33,456	\$0	\$1,378,869	\$0
Dodge	\$43,317	\$260,484	\$21,009	\$11,439	\$21,009
Faribault	\$24,500	\$25,288	\$0	\$2,983	\$0
Fillmore	\$0	\$71,760	\$0	\$0	\$0
Freeborn	\$115,965	\$288,083	\$0	\$28,144	\$0
Goodhue	\$409,866	\$103,141	\$0	\$30,300	\$0
Grant	\$0	\$189,526	\$0	\$18,212	\$0
Hennepin	\$1,728,080	\$1,776,291	\$13,902	\$3,257,968	\$210,038
Houston	\$22,776	\$264,406	\$0	\$60,455	\$0
Hubbard	\$30,881	\$324,616	\$2,410	\$212,301	\$0
Isanti	\$36,305	\$50,400	\$0	\$6,860	\$0
Itasca	\$96,261	\$363,936	\$0	\$36,667	\$0
Jackson	\$38,024	\$16,600	\$0	\$15,798	\$0
Kanabec	\$3,387	\$48,306	\$0	\$5,039	\$0
Kandiyohi	\$276,640	\$462,674	\$0	\$94,455	\$0
Kittson	\$32,703	\$1,166	\$0	\$7,702	\$0
Koochiching	\$109,308	\$137,895	\$11,250	\$21,066	\$0
Lac qui Parle	\$25,970	\$62,605	\$0	\$16,061	\$0
Lake	\$33,428	\$135,453	\$864	\$55,009	\$1
Lake of The Woods	\$5,343	\$198,022	\$1,183	\$38,029	\$0
Le Sueur	\$49,130	\$43,543	\$0	\$53,131	\$0
Lincoln	\$50,406	\$155,431	\$500	\$16,416	\$300
Lyon	\$35,788	\$260,401	\$0	\$145,672	\$4,000
Mahnomen	\$45,775	\$10,295	\$0	\$16,326	\$0
Marshall	\$30,652	\$0	\$0	\$10,514	\$0
Martin	\$30,809	\$218,898	\$856	\$5,669	\$1,257
McLeod	\$576,950	\$902,974	\$8,002	\$73,431	\$0
Meeker	\$10,684	\$16,800	\$0	\$13,508	\$0

County Survey Responses
Finances: Expenditures by program area (Part 2)

County	Planning & administration	Recycling	Yard waste	HHW and problem materials	Source reduction
Mille Lacs	\$0	\$65,035	\$0	\$20,821	\$0
Morrison	\$39,707	\$125,133	\$25,685	\$240,941	\$0
Mower	\$95,228	\$442,772	\$0	\$8,722	\$0
Murray	\$73,773	\$31,713	\$0	\$3,407	\$0
Nicollet	\$54,722	\$206,270	\$0	\$65,234	\$0
Nobles	\$98,315	\$216,921	\$0	\$27,518	\$0
Norman	\$21,773	\$65,858	\$0	\$20,177	\$0
Olmsted	\$60,796	\$739,819	\$122,398	\$493,618	\$144,887
Otter Tail	\$719,148	\$403,748	\$3,420	\$160,511	\$7,943
Pennington	\$21,213	\$8,890	\$0	\$11,394	\$0
Pine	\$46,400	\$108,000	\$0	\$5,200	\$0
Pipestone	\$18,697	\$136,052	\$0	\$8,162	\$0
Polk	\$47,864	\$256,674	\$8,485	\$72,743	\$0
Pope/Douglas	\$189,357	\$127,498	\$49,519	\$29,803	\$0
Ramsey	\$1,900,500	\$454,240	\$934,354	\$1,197,977	\$0
Red Lake	\$20,110	\$53,809	\$0	\$8,510	\$0
Redwood	\$215,033	\$261,600	\$13,134	\$50,850	\$8,008
Renville	\$97,467	\$120,728	\$0	\$38,104	\$0
Rice	\$462,566	\$1,058,801	\$34,000	\$176,718	\$200
Rock	\$66,482	\$57,532	\$2,610	\$8,497	\$900
Roseau	\$13,985	\$0	\$0	\$20,429	\$0
Scott	\$131,582	\$0	\$0	\$122,712	\$0
Sherburne	\$2,410	\$189,423	\$0	\$85,518	\$0
Sibley	\$49,730	\$71,745	\$0	\$27,452	\$0
St. Louis - partial	\$210,916	\$790,776	\$10,275	\$217,145	\$25,037
Stearns	\$117,399	\$49,309	\$14,239	\$157,937	\$14,239
Steele	\$118,859	\$345,849	\$0	\$10,619	\$0
Stevens	\$55,080	\$67,821	\$950	\$26,907	\$0
Swift	\$288,074	\$107,067	\$5,500	\$5,473	\$1,050
Todd	\$105,575	\$118,106	\$2,000	\$102,260	\$1,500
Traverse	\$78,005	\$30,940	\$0	\$9,533	\$0
Wabasha	\$90,882	\$37,221	\$0	\$0	\$0
Wadena	\$67,156	\$71,935	\$2,015	\$28,040	\$0
Waseca	\$78,371	\$240,640	\$4,425	\$64,005	\$0
Washington	\$257,981	\$9,254	\$0	\$1,262,802	\$7,736
Watonwan	\$13,968	\$223,661	\$0	\$24,577	\$0
Wilkin	\$36,168	\$186,257	\$4,200	\$45,027	\$0
Winona	\$307,946	\$608,457	\$0	\$73,516	\$0
WLSSD	\$1,557,366	\$369,901	\$395,865	\$313,398	\$0
Wright	\$71,795	\$3,632	\$5,076	\$52,026	\$0
Yellow Medicine	\$666	\$110,361	\$0	\$8,124	\$0
Metro Area	\$5,418,944	\$2,551,238	\$1,095,020	\$7,935,399	\$250,634
Greater Minn.	\$9,540,141	\$15,261,854	\$828,362	\$4,727,013	\$230,973
Minnesota	\$14,959,084	\$17,813,092	\$1,923,383	\$12,662,412	\$481,607

County Survey Responses
Finances: Expenditures by program area (Part 2)

County	Education	Market development	Litter prevention	County grants to other local units of government
Aitkin	\$2,268	\$0	\$0	\$0
Anoka	\$120,806	\$0	\$0	\$763,641
Becker	\$7,644	\$0	\$2,000	\$58,250
Beltrami	\$1,277	\$0	\$0	\$0
Benton	\$33,325	\$0	\$0	\$63,509
Big Stone	\$608	\$0	\$0	\$0
Blue Earth	\$11,790	\$0	\$0	\$0
Brown	\$2,914	\$0	\$0	\$0
Carlton	\$7,145	\$0	\$0	\$15,000
Carver	\$3,846	\$0	\$19,634	\$76,779
Cass	\$0	\$0	\$0	\$0
Chippewa	\$1,341	\$0	\$0	\$0
Chisago	\$30,173	\$0	\$3,083	\$0
Clay	\$14,885	\$0	\$0	\$0
Clearwater	\$2,124	\$0	\$0	\$0
Cook	\$714	\$0	\$0	\$0
Cottonwood	\$5,579	\$0	\$0	\$0
Crow Wing	\$16,175	\$0	\$59	\$320,795
Dakota	\$165,409	\$0	\$0	\$394,805
Dodge	\$37,348	\$900	\$0	\$0
Faribault	\$3,206	\$0	\$376	\$48,620
Fillmore	\$0	\$0	\$0	\$0
Freeborn	\$15,448	\$0	\$0	\$0
Goodhue	\$4,053	\$0	\$0	\$0
Grant	\$0	\$0	\$0	\$0
Hennepin	\$238,388	\$0	\$0	\$3,036,340
Houston	\$1,545	\$0	\$0	\$0
Hubbard	\$17,394	\$0	\$300	\$0
Isanti	\$0	\$0	\$0	\$2,500
Itasca	\$365	\$0	\$0	\$0
Jackson	\$11,528	\$0	\$0	\$0
Kanabec	\$687	\$0	\$0	\$0
Kandiyohi	\$0	\$0	\$0	\$0
Kittson	\$0	\$0	\$0	\$245,442
Koochiching	\$5,843	\$0	\$119	\$0
Lac qui Parle	\$598	\$0	\$0	\$0
Lake	\$1	\$2	\$1	\$0
Lake of The Woods	\$624	\$0	\$0	\$0
Le Sueur	\$29,253	\$0	\$0	\$19,322
Lincoln	\$4,200	\$0	\$150	\$0
Lyon	\$43,570	\$0	\$0	\$0
Mahnomen	\$75	\$0	\$0	\$0
Marshall	\$0	\$0	\$0	\$65,212
Martin	\$5,207	\$0	\$422	\$22,315
McLeod	\$13,758	\$0	\$527	\$46,793
Meeker	\$19,016	\$0	\$0	\$19,451

County Survey Responses
Finances: Expenditures by program area (Part 2)

County	Education	Market development	Litter prevention	County grants to other local units of government
Mille Lacs	\$0	\$0	\$0	\$0
Morrison	\$1,118	\$0	\$0	\$53,706
Mower	\$6,099	\$0	\$0	\$0
Murray	\$5,823	\$0	\$0	\$0
Nicollet	\$48,564	\$0	\$0	\$0
Nobles	\$10,952	\$0	\$0	\$0
Norman	\$1,395	\$0	\$0	\$0
Olmsted	\$181,233	\$0	\$0	\$0
Otter Tail	\$95,230	\$0	\$2,645	\$3,420
Pennington	\$155	\$0	\$0	\$0
Pine	\$2,000	\$0	\$0	\$0
Pipestone	\$475	\$0	\$0	\$59,798
Polk	\$9,532	\$0	\$0	\$15,000
Pope/Douglas	\$23,334	\$0	\$0	\$0
Ramsey	\$546,171	\$0	\$0	\$1,064,734
Red Lake	\$359	\$0	\$0	\$0
Redwood	\$4,336	\$0	\$2,067	\$0
Renville	\$3,287	\$0	\$0	\$0
Rice	\$15,000	\$1,850	\$200	\$0
Rock	\$3,459	\$0	\$0	\$0
Roseau	\$0	\$0	\$0	\$118,807
Scott	\$68,108	\$0	\$0	\$0
Sherburne	\$45,982	\$0	\$0	\$0
Sibley	\$15,044	\$0	\$0	\$42,364
St. Louis - partial	\$34,224	\$46,927	\$0	\$66,298
Stearns	\$28,998	\$14,239	\$14,239	\$137,511
Steele	\$14,096	\$0	\$0	\$0
Stevens	\$4,436	\$0	\$0	\$0
Swift	\$8,400	\$0	\$0	\$0
Todd	\$1,946	\$0	\$304	\$0
Traverse	\$286	\$0	\$0	\$2,000
Wabasha	\$0	\$0	\$0	\$0
Wadena	\$745	\$0	\$0	\$0
Waseca	\$0	\$0	\$0	\$0
Washington	\$41,167	\$0	\$0	\$395,221
Watonwan	\$3,035	\$0	\$0	\$0
Wilkin	\$1,215	\$0	\$0	\$0
Winona	\$11,017	\$0	\$0	\$0
WLSSD	\$165,351	\$5,380	\$0	\$95,205
Wright	\$482	\$0	\$0	\$177,528
Yellow Medicine	\$7,026	\$0	\$0	\$0
Metro Area	\$1,161,770	\$0	\$19,634	\$5,731,520
Greater Minn.	\$1,128,443	\$69,298	\$26,492	\$1,698,847
Minnesota	\$2,290,213	\$69,298	\$46,126	\$7,430,366

County Survey Responses
Finances: Balance Sheet

County	Total revenues	Total expenditures	Balance
Aitkin	\$423,911	\$207,478	\$216,433
Anoka	\$2,083,051	\$2,083,051	\$0
Becker	\$155,613	\$456,226	(\$300,614)
Beltrami	\$636,070	\$636,070	\$0
Benton	\$285,638	\$285,638	\$0
Big Stone	\$203,237	\$195,482	\$7,755
Blue Earth	\$321,732	\$321,732	(\$0)
Brown	\$375,596	\$375,596	(\$0)
Carlton	\$187,795	\$254,030	(\$66,235)
Carver	\$966,691	\$966,691	\$0
Cass	\$705,016	\$705,016	\$0
Chippewa	\$183,588	\$183,588	(\$0)
Chisago	\$329,950	\$329,950	(\$0)
Clay	\$872,188	\$658,376	\$213,812
Clearwater	\$133,685	\$133,685	\$0
Cook	\$316,882	\$316,882	\$0
Cottonwood	\$493,868	\$238,216	\$255,652
Crow Wing	\$745,261	\$745,261	\$0
Dakota	\$2,457,938	\$2,457,938	\$0
Dodge	\$395,506	\$395,506	\$0
Faribault	\$104,973	\$104,973	\$0
Fillmore	\$69,700	\$71,760	(\$2,060)
Freeborn	\$457,508	\$447,640	\$9,868
Goodhue	\$678,214	\$547,359	\$130,855
Grant	\$297,876	\$207,738	\$90,138
Hennepin	\$10,261,007	\$10,261,007	\$0
Houston	\$196,848	\$349,182	(\$152,334)
Hubbard	\$587,902	\$587,902	\$0
Isanti	\$241,429	\$96,065	\$145,364
Itasca	\$497,230	\$497,230	(\$0)
Jackson	\$248,405	\$81,950	\$166,454
Kanabec	\$152,880	\$57,420	\$95,460
Kandiyohi	\$833,769	\$833,769	\$0
Kittson	\$266,915	\$287,014	(\$20,099)
Koochiching	\$285,482	\$285,482	\$0
Lac qui Parle	\$307,946	\$105,235	\$202,712
Lake	\$224,759	\$224,759	\$0
Lake of The Woods	\$243,202	\$243,202	\$0
Le Sueur	\$212,470	\$194,379	\$18,091
Lincoln	\$237,029	\$227,403	\$9,625
Lyon	\$489,431	\$489,431	\$0
Mahnomen	\$103,843	\$72,471	\$31,372
Marshall	\$106,378	\$106,378	\$0
Martin	\$385,974	\$285,433	\$100,541
McLeod	\$1,899,641	\$1,622,435	\$277,207
Meeker	\$101,126	\$79,459	\$21,667
Mille Lacs	\$167,507	\$85,856	\$81,651
Morrison	\$486,290	\$486,290	\$0

County Survey Responses
Finances: Balance Sheet

County	Total revenues	Total expenditures	Balance
Mower	\$552,822	\$552,822	\$0
Murray	\$70,987	\$114,716	(\$43,730)
Nicollet	\$375,833	\$374,790	\$1,044
Nobles	\$380,094	\$353,706	\$26,388
Norman	\$109,204	\$109,204	\$0
Olmsted	\$1,373,433	\$1,742,751	(\$369,318)
Otter Tail	\$1,411,365	\$1,396,065	\$15,300
Pennington	\$172,517	\$41,652	\$130,865
Pine	\$299,147	\$161,600	\$137,547
Pipestone	\$223,184	\$223,184	\$0
Polk	\$675,794	\$410,298	\$265,496
Pope/Douglas	\$412,422	\$419,509	(\$7,087)
Ramsey	\$6,741,483	\$6,097,977	\$643,506
Red Lake	\$82,787	\$82,787	\$0
Redwood	\$714,265	\$555,028	\$159,237
Renville	\$304,306	\$259,586	\$44,720
Rice	\$1,283,043	\$1,749,335	(\$466,292)
Rock	\$138,872	\$139,480	(\$608)
Roseau	\$160,830	\$153,221	\$7,609
Scott	\$970,135	\$322,401	\$647,734
Sherburne	\$477,563	\$323,333	\$154,229
Sibley	\$219,605	\$206,335	\$13,270
St. Louis - partial	\$1,401,598	\$1,401,598	\$0
Stearns	\$589,256	\$548,110	\$41,146
Steele	\$489,423	\$489,423	\$0
Stevens	\$134,896	\$155,194	(\$20,298)
Swift	\$421,142	\$415,564	\$5,578
Todd	\$448,277	\$331,691	\$116,586
Traverse	\$69,938	\$120,764	(\$50,826)
Wabasha	\$94,537	\$128,103	(\$33,566)
Wadena	\$169,890	\$169,890	\$0
Waseca	\$387,441	\$387,441	\$0
Washington	\$1,974,161	\$1,974,161	\$0
Watonwan	\$651,177	\$265,241	\$385,936
Wilkin	\$272,867	\$272,867	\$0
Winona	\$988,500	\$1,000,936	(\$12,436)
WLSSD	\$2,902,466	\$2,902,466	\$0
Wright	\$1,165,167	\$310,539	\$854,628
Yellow Medicine	\$153,507	\$126,177	\$27,330
Metro Area	\$24,961,893	\$24,164,157	\$797,735
Greater Minn.	\$36,920,991	\$33,511,423	\$3,409,568
Minnesota	\$61,882,883	\$57,675,580	\$4,207,303

County Survey Responses
Paper collected for recycling (tons)

County	Computer paper	Corrugated	Magazine/catalog	Mixed paper	Newsprint	Office paper	Other paper	Phone book	Total paper
Aitkin	0	589	0	464	0	0	0	0	1,053
Anoka	16	47,298	803	12,990	13,866	840	6,181	72	82,066
Becker	0	5,477	103	457	1,219	48	0	9	7,313
Beltrami	25	2,788	0	840	23	69	66	3	3,814
Benton	0	1,696	8,751	364	696	164	289	11	11,970
Big Stone	0	274	0	153	164	0	0	0	591
Blue Earth	0	15,422	1,432	5,367	4,382	255	0	0	26,858
Brown	0	5,482	0	603	939	589	7	0	7,621
Carlton	0	1,500	232	647	663	45	0	0	3,086
Carver	0	6,027	0	13,749	3,422	97	0	0	23,294
Cass	0	2,721	0	566	1,269	184	4	0	4,744
Chippewa	0	1,253	3	19	281	2	0	0	1,558
Chisago	0	2,240	0	0	2,185	312	0	25	4,762
Clay	0	2,446	128	565	995	313	1	28	4,476
Clearwater	0	193	0	79	0	0	0	2	274
Cook	0	495	88	34	81	0	0	0	698
Cottonwood	0	1,371	18	0	188	13	0	0	1,590
Crow Wing	4,544	0	118	2,803	568	5	0	0	8,038
Dakota	0	22,100	168	48,454	17,105	1,270	2,092	0	91,188
Dodge	0	686	43	671	0	78	0	0	1,479
Faribault	0	3,429	0	2,692	0	2	0	0	6,123
Fillmore	0	265	0	918	0	52	0	0	1,235
Freeborn	0	6,434	0	1,043	0	0	0	0	7,477
Goodhue	0	4,179	220	3,873	1,107	3,034	0	0	12,413
Grant	0	133	27	0	79	31	0	0	269
Hennepin	0	46,696	3,853	34,116	37,550	9,761	3,245	113	135,334
Houston	0	294	0	355	192	0	0	0	840
Hubbard	0	1,190	0	0	740	131	0	0	2,061
Isanti	0	2,228	7	44	1,034	0	12	0	3,325
Itasca	20	3,701	90	695	1,300	425	0	20	6,251
Jackson	0	1,260	0	88	365	0	0	0	1,712
Kanabec	0	426	0	0	101	64	0	0	591
Kandiyohi	0	3,709	312	475	676	140	295	20	5,626
Kittson	0	143	25	0	90	5	0	1	264
Koochiching	0	1,527	0	282	105	22	0	0	1,936
Lac qui Parle	0	579	0	0	395	31	0	0	1,005
Lake	0	795	58	26	186	44	89	0	1,198
Lake of The Woods	0	63	0	0	0	0	0	0	63
Le Sueur	0	1,042	0	789	99	13	0	26	1,969
Lincoln	0	271	0	39	225	0	0	0	535
Lyon	0	3,582	657	536	643	14	0	0	5,432
Mahnomen	0	139	7	1	34	0	0	0	181
Marshall	0	65	4	24	117	6	0	2	218
Martin	0	7,098	0	3,968	0	2	0	0	11,068
McLeod	0	3,056	0	637	195	76	0	0	3,965
Meeker	0	1,116	4	346	109	63	0	0	1,637

County Survey Responses
Paper collected for recycling (tons)

County	Computer paper	Corrugated	Magazine/catalog	Mixed paper	Newsprint	Office paper	Other paper	Phone book	Total paper
Mille Lacs	0	520	0	619	0	0	0	0	1,138
Morrison	0	2,985	662	2	716	832	0	0	5,197
Mower	0	13,783	46	0	889	227	32	7	14,984
Murray	0	430	16	17	776	23	0	0	1,262
Nicollet	7	2,735	0	4,346	977	2,385	5	229	10,684
Nobles	0	4,196	0	605	203	190	0	0	5,194
Norman	0	32	0	0	32	0	0	1	65
Olmsted	0	14,101	106	7,347	3,254	2,728	5,215	20	32,770
Otter Tail	0	1,950	124	0	816	209	0	0	3,099
Pennington	0	1,153	83	0	230	90	0	0	1,556
Pine	150	1,450	0	392	0	21	775	0	2,788
Pipestone	1	919	0	181	97	0	0	0	1,198
Polk	0	1,778	27	499	0	95	0	7	2,405
Pope/Douglas	0	5,935	0	532	1,398	66	0	0	7,931
Ramsey	0	4,925	1,495	5,037	21,318	58	0	445	33,279
Red Lake	0	100	12	0	72	3	0	0	188
Redwood	110	3,631	186	183	254	485	0	0	4,849
Renville	0	367	0	446	661	0	0	0	1,474
Rice	0	13,243	0	2,856	0	3	0	0	16,102
Rock	0	585	0	0	175	36	0	0	796
Roseau	0	1,868	96	0	172	87	0	0	2,223
Scott	632	11,194	0	11,438	1,803	312	186	0	25,565
Sherburne	0	33	0	10,104	0	0	0	0	10,137
Sibley	0	203	0	222	108	2	0	0	535
St. Louis - partial	0	3,536	0	3,664	764	378	0	0	8,342
Stearns	0	8,688	10,415	3,351	2,400	1,171	3	33	26,061
Steele	0	3,518	2	2,223	0	1,740	2,018	0	9,502
Stevens	0	399	7	53	141	15	0	11	626
Swift	30	696	67	0	515	107	0	3	1,418
Todd	0	1,343	0	10,074	0	0	0	0	11,417
Traverse	0	116	12	0	78	11	0	0	217
Wabasha	0	5,397	78	10	704	6	0	0	6,195
Wadena	0	1,201	0	93	0	2	0	0	1,296
Waseca	0	3,361	66	2,361	264	537	23,716	0	30,305
Washington	0	14,315	49	14,482	19,187	12,358	679	25	61,094
Watsonwan	775	0	0	0	1,086	207	0	0	2,069
Wilkin	0	437	11	0	213	51	0	0	712
Winona	0	10,855	0	3,941	1,494	0	0	0	16,290
WLSSD	0	12,306	504	2,786	5,744	1,195	382	0	22,916
Wright	0	12,371	56	1,442	4,166	4	0	0	18,039
Yellow Medicine	0	624	0	19	342	57	0	0	1,043
									0
Metro Area	648	152,555	6,368	140,266	114,251	24,695	12,384	655	451,821
Greater Minn.	5,662	228,203	24,902	88,829	50,185	19,195	32,909	457	450,342
Minnesota	6,309	380,757	31,270	229,095	164,437	43,890	45,293	1,112	902,163

County Survey Responses
Metal collected for recycling (tons)

County	Aluminum	Co-mingled alum/steel/tin	Other ferrous & non-ferrous	Steel/tin cans	Total metal
Aitkin	100	0	308	123	530
Anoka	1,187	256	22,249	6,598	30,291
Becker	123	13	3	81	220
Beltrami	101	79	678	427	1,285
Benton	249	883	5,689	374	7,195
Big Stone	0	158	189	0	348
Blue Earth	9,722	0	7,747	1,370	18,839
Brown	363	0	2,417	172	2,952
Carlton	191	0	43	119	353
Carver	80	336	4,662	120	5,198
Cass	202	0	0	108	310
Chippewa	98	356	0	32	486
Chisago	275	0	567	225	1,067
Clay	189	6,124	0	94	6,407
Clearwater	22	27	433	0	482
Cook	15	0	105	32	152
Cottonwood	13	0	18	92	123
Crow Wing	263	14,527	60	396	15,246
Dakota	2,006	12,532	10,123	4,540	29,201
Dodge	13	118	1,531	0	1,661
Faribault	277	557	731	0	1,565
Fillmore	59	0	137	132	328
Freeborn	1,203	3,397	110	0	4,711
Goodhue	398	70	397	186	1,051
Grant	10	0	10	19	39
Hennepin	5,955	1,229	41,826	2,343	51,353
Houston	232	0	480	13	725
Hubbard	71	329	640	86	1,126
Isanti	449	194	4,155	1,478	6,276
Itasca	76	125	850	150	1,201
Jackson	28	0	542	23	593
Kanabec	0	45	0	691	736
Kandiyohi	252	3	100	94	449
Kittson	6	46	27	24	103
Koochiching	66	0	720	18	803
Lac qui Parle	49	0	108	672	829
Lake	25	5	420	41	492
Lake of The Woods	1	194	0	2	197
Le Sueur	27	736	1,440	307	2,510
Lincoln	57	21	24	0	102
Lyon	278	0	4,200	304	4,783
Mahnomen	10	7	47	0	64
Marshall	6	155	255	0	416
Martin	1,846	3,102	2,723	0	7,671
McLeod	74	1,743	317	85	2,219
Meeker	233	135	349	71	787
Mille Lacs	0	355	0	0	355
Morrison	0	185	6,831	85	7,101

County Survey Responses
Metal collected for recycling (tons)

County	Aluminum	Co-mingled alum/steel/tin	Other ferrous & non-ferrous	Steel/tin cans	Total metal
Mower	553	0	89	67	709
Murray	75	129	198	28	430
Nicollet	261	969	581	76	1,888
Nobles	74	4,253	0	0	4,327
Norman	14	0	697	0	711
Olmsted	589	163	5,709	809	7,270
Otter Tail	281	0	3,914	136	4,332
Pennington	0	46	0	0	46
Pine	162	0	1,500	127	1,789
Pipestone	30	0	108	47	185
Polk	172	129	3,339	0	3,640
Pope/Douglas	1,043	0	369	687	2,099
Ramsey	855	124	1,174	8,672	10,825
Red Lake	0	29	275	0	304
Redwood	754	0	2,334	61	3,149
Renville	4	604	53	0	661
Rice	448	220	4,802	357	5,827
Rock	27	0	554	40	621
Roseau	64	0	559	93	716
Scott	158	367	14,172	2,451	17,148
Sherburne	0	14,233	2,151	0	16,384
Sibley	11	91	169	94	365
St. Louis - partial	589	1,890	34,825	352	37,656
Stearns	896	18,558	6,381	2,929	28,763
Steele	44	0	134	74	252
Stevens	60	0	265	153	478
Swift	146	0	49	97	292
Todd	14	0	316	45	375
Traverse	11	3	202	15	230
Wabasha	77	0	3,299	315	3,691
Wadena	0	150	5,456	0	5,606
Waseca	111	0	552	26	689
Washington	1,678	253	4,779	521	7,231
Watonwan	18	0	0	7	25
Wilkin	53	0	58	12	124
Winona	1,137	0	1,210	3,556	5,903
WLSSD	556	0	9,318	468	10,342
Wright	234	0	4,328	856	5,418
Yellow Medicine	3	0	0	81	84
Metro Area	11,919	15,099	98,985	25,244	151,246
Greater Minn.	26,183	75,157	139,196	19,733	260,269
Minnesota	38,102	90,255	238,180	44,977	411,515

County Survey Responses
Glass collected for recycling (tons)

County	Food & beverage	Other glass	Total glass
Aitkin	132	0	132
Anoka	5,687	27	5,714
Becker	603	0	603
Beltrami	536	9	545
Benton	1,214	352	1,566
Big Stone	104	0	104
Blue Earth	1,147	0	1,147
Brown	486	0	486
Carlton	695	0	695
Carver	1,663	0	1,663
Cass	148	0	148
Chippewa	14	0	14
Chisago	689	0	689
Clay	535	0	535
Clearwater	0	0	0
Cook	219	0	219
Cottonwood	102	0	102
Crow Wing	1,262	0	1,262
Dakota	10,359	1,437	11,796
Dodge	405	385	790
Faribault	89	49	138
Fillmore	584	0	584
Freeborn	957	0	957
Goodhue	1,474	0	1,474
Grant	89	0	89
Hennepin	22,097	0	22,097
Houston	0	120	120
Hubbard	454	0	454
Isanti	346	0	346
Itasca	1,030	0	1,030
Jackson	98	0	98
Kanabec	0	80	80
Kandiyohi	317	0	317
Kittson	123	0	123
Koochiching	90	0	90
Lac qui Parle	14	57	72
Lake	71	0	71
Lake of The Woods	0	0	0
Le Sueur	321	0	321
Lincoln	80	0	80
Lyon	400	0	400
Mahnomen	25	0	25
Marshall	121	0	121
Martin	896	253	1,149
McLeod	346	0	346
Meeker	248	0	248
Mille Lacs	201	0	201

County Survey Responses
Glass collected for recycling (tons)

County	Food & beverage	Other glass	Total glass
Morrison	408	0	408
Mower	376	0	376
Murray	160	0	160
Nicollet	256	0	256
Nobles	214	0	214
Norman	63	0	63
Olmsted	1,941	1,062	3,003
Otter Tail	718	0	718
Pennington	61	0	61
Pine	350	20	370
Pipestone	178	0	178
Polk	238	0	238
Pope/Douglas	1,196	0	1,196
Ramsey	9,429	0	9,429
Red Lake	110	0	110
Redwood	291	0	291
Renville	548	0	548
Rice	1,342	2,030	3,372
Rock	112	0	112
Roseau	207	3,205	3,412
Scott	409	0	409
Sherburne	3,553	0	3,553
Sibley	68	0	68
St. Louis - partial	1,407	0	1,407
Stearns	3,871	1,111	4,982
Steele	570	21,942	22,512
Stevens	121	0	121
Swift	290	0	290
Todd	159	0	159
Traverse	29	0	29
Wabasha	552	0	552
Wadena	125	0	125
Waseca	188	0	188
Washington	2,919	0	2,919
Watsonwan	54	0	54
Wilkin	66	0	66
Winona	1,178	0	1,178
WLSSD	2,294	0	2,294
Wright	1,170	0	1,170
Yellow Medicine	193	0	193
Metro Area	52,562	1,464	54,026
Greater Minn.	(52,562)	30,675	71,996
Minnesota		32,139	126,022

County Survey Responses
Plastic collected for recycling (tons)

County	Film plastic	HDPE	Mixed plastic	Other plastic	PET	Polystyrene	Total Plastic
Aitkin	0	0	115	0	0	0	115
Anoka	115	334	1,019	618	152	1	2,238
Becker	0	4	149	450	1	0	603
Beltrami	0	0	0	0	0	0	0
Benton	18	497	122	83	48	0	767
Big Stone	0	15	0	0	14	0	29
Blue Earth	1,471	46	300	703	531	40	3,091
Brown	0	0	735	0	0	0	735
Carlton	11	0	253	0	0	0	264
Carver	87	0	882	0	0	34	1,004
Cass	0	52	1,040	0	57	0	1,150
Chippewa	4	3	70	26	1	38	142
Chisago	2	0	314	0	0	0	316
Clay	0	15	160	9	15	0	199
Clearwater	0	0	0	0	0	0	0
Cook	0	0	44	0	0	0	44
Cottonwood	0	5	57	0	0	0	61
Crow Wing	0	0	996	0	0	0	996
Dakota	52	13	6,732	84	2	0	6,883
Dodge	0	0	95	164	0	0	260
Faribault	3	17	234	5	0	0	259
Fillmore	0	0	153	0	0	0	153
Freeborn	550	0	202	0	0	0	753
Goodhue	25	74	25	17	77	0	219
Grant	0	0	31	0	0	0	31
Hennepin	0	119	13,528	168	409	0	14,224
Houston	0	0	17	22	0	0	39
Hubbard	0	0	88	0	0	0	88
Isanti	50	0	153	0	0	0	203
Itasca	44	72	260	0	140	0	516
Jackson	0	0	33	0	0	0	33
Kanabec	0	0	224	0	0	0	224
Kandiyohi	66	102	3	20	88	0	279
Kittson	0	1	17	0	3	0	21
Koochiching	0	17	0	0	16	0	32
Lac qui Parle	0	0	60	3	5	0	68
Lake	0	0	60	0	0	0	60
Lake of The Woods	0	0	0	0	0	0	0
Le Sueur	1	0	98	255	31	0	386
Lincoln	0	5	6	0	11	0	22
Lyon	0	0	201	0	0	0	201
Mahnomen	0	0	7	0	0	0	7
Marshall	0	0	26	0	1	0	27
Martin	16	46	880	10	0	0	952
McLeod	3,514	0	167	0	0	108	3,789
Meeker	0	122	0	0	0	0	122
Mille Lacs	0	0	139	0	0	0	139

County Survey Responses
Plastic collected for recycling (tons)

County	Film plastic	HDPE	Mixed plastic	Other plastic	PET	Polystyrene	Total Plastic
Morrison	34	0	163	89	0	0	286
Mower	60	99	0	19	57	0	235
Murray	0	2	72	0	0	0	74
Nicollet	0	71	332	96	96	0	594
Nobles	5	2	321	1,066	1	0	1,395
Norman	0	0	0	0	0	0	0
Olmsted	17	29	691	334	118	17	1,206
Otter Tail	0	130	0	72	145	0	347
Pennington	0	0	28	23	0	0	51
Pine	5	35	0	98	25	0	163
Pipestone	0	0	88	258	0	0	346
Polk	7	1	98	6	0	0	112
Pope/Douglas	58	9	377	43	2	0	488
Ramsey	77	663	420	0	731	0	1,891
Red Lake	0	0	12	0	0	0	12
Redwood	231	71	211	0	46	0	559
Renville	0	0	100	0	0	0	100
Rice	22	3	1,017	0	1	0	1,043
Rock	0	2	5	25	25	0	56
Roseau	221	0	66	139	0	0	426
Scott	41	70	453	305	219	0	1,087
Sherburne	0	0	1,120	0	0	0	1,120
Sibley	0	0	37	0	0	0	37
St. Louis - partial	8	226	30	0	236	0	500
Stearns	50	1,581	407	416	154	0	2,608
Steele	37	5	176	164	2	0	384
Stevens	0	26	0	15	26	0	67
Swift	0	74	0	0	69	0	143
Todd	20	0	51	0	0	0	71
Traverse	0	0	19	0	0	0	19
Wabasha	0	0	276	0	0	0	276
Wadena	3	3	157	0	0	0	164
Waseca	0	37	60	0	124	0	221
Washington	84	3	1,013	0	7	0	1,107
Watonwan	0	0	12	0	0	0	12
Wilkin	0	0	20	0	0	0	20
Winona	0	0	411	0	0	0	411
WLSSD	160	87	866	0	0	12	1,125
Wright	10	6	2,658	0	1	0	2,675
Yellow Medicine	0	0	53	0	0	0	53
Metro Area	456	1,201	24,047	1,175	1,520	35	28,434
Greater Minn.	6,723	3,593	17,471	4,629	2,164	215	34,794
Minnesota	7,179	4,794	41,518	5,804	3,684	250	63,228

County Survey Responses
Organics collected for recycling (tons)

County	Food to livestock	Food to people	Source-separated organics	Total organics
Aitkin	0	0	0	0
Anoka	3,436	0	29	3,465
Becker	0	0	0	0
Beltrami	0	0	0	0
Benton	0	0	0	0
Big Stone	0	0	104	104
Blue Earth	0	0	74	74
Brown	1,765	0	0	1,765
Carlton	0	0	185	185
Carver	10,911	0	257	11,168
Cass	0	0	258	258
Chippewa	0	0	42	42
Chisago	227	0	0	227
Clay	5,791	80	0	5,872
Clearwater	0	0	0	0
Cook	0	0	0	0
Cottonwood	23	0	0	23
Crow Wing	0	0	775	775
Dakota	13,736	0	650	14,386
Dodge	22	0	148	170
Faribault	0	0	0	0
Fillmore	0	0	0	0
Freeborn	0	0	0	0
Goodhue	200	0	42	242
Grant	0	0	0	0
Hennepin	39,221	0	10,751	49,972
Houston	0	0	0	0
Hubbard	39	0	0	39
Isanti	485	0	0	485
Itasca	0	0	0	0
Jackson	21	0	0	21
Kanabec	0	0	0	0
Kandiyohi	156	0	0	156
Kittson	17	0	0	17
Koochiching	0	0	0	0
Lac qui Parle	579	3	9	591
Lake	0	0	0	0
Lake of The Woods	0	0	3	3
Le Sueur	2,550	0	0	2,550
Lincoln	0	8	0	8
Lyon	0	42	0	42
Mahnomen	0	0	298	298
Marshall	0	0	0	0
Martin	0	0	0	0
McLeod	0	0	2,148	2,148
Meeker	0	34	0	34

County Survey Responses
Organics collected for recycling (tons)

County	Food to livestock	Food to people	Source-separated organics	Total organics
Mille Lacs	0	0	0	0
Morrison	0	0	70	70
Mower	0	0	0	0
Murray	21	5	0	26
Nicollet	175	0	0	175
Nobles	183	24	0	207
Norman	0	0	0	0
Olmsted	785	0	173	958
Otter Tail	0	0	0	0
Pennington	0	0	0	0
Pine	970	0	0	970
Pipestone	97	0	0	97
Polk	2,319	0	0	2,319
Pope/Douglas	0	0	53	53
Ramsey	38,371	629	384	39,384
Red Lake	0	0	0	0
Redwood	1,890	540	0	2,430
Renville	650	240	0	890
Rice	29,628	0	148	29,776
Rock	0	0	0	0
Roseau	0	0	0	0
Scott	761	0	322	1,083
Sherburne	536	24	103	663
Sibley	5,440	0	0	5,440
St. Louis - partial	0	46	0	46
Stearns	0	0	0	0
Steele	0	0	48	48
Stevens	0	0	0	0
Swift	0	0	1,396	1,396
Todd	0	0	0	0
Traverse	0	0	0	0
Wabasha	4,368	0	0	4,368
Wadena	0	0	0	0
Waseca	0	0	0	0
Washington	7,808	428	185	8,421
Watsonwan	0	0	0	0
Wilkin	0	0	0	0
Winona	1,467	0	0	1,467
WLSSD	106	189	2,211	2,506
Wright	2	0	0	2
Yellow Medicine	0	0	0	0
Metro Area	114,244	1,057	12,578	127,879
Greater Minn.	60,510	1,234	8,285	70,030
Minnesota	174,755	2,291	20,864	197,910

County Survey Responses
Textiles, other collected for recycling (tons)

County	Carpet	Textiles	Pallets	Unspecified or Other	Mattresses & box springs	Total
Aitkin	0	0	0	3	0	3
Anoka	1	2,760	0	5,208	7	7,976
Becker	0	121	0	0	0	121
Beltrami	0	0	0	0	0	0
Benton	0	0	0	0	0	0
Big Stone	0	7	0	0	0	7
Blue Earth	11	402	13,200	2,000	0	15,613
Brown	0	64	2,164	38	0	2,265
Carlton	0	7	0	0	35	42
Carver	45	147	938	0	0	1,130
Cass	0	41	0	200	0	241
Chippewa	0	0	0	75	0	75
Chisago	0	100	0	0	8	108
Clay	0	259	26	0	4	288
Clearwater	0	15	0	0	0	15
Cook	0	0	0	0	0	0
Cottonwood	0	0	1,200	0	0	1,200
Crow Wing	0	257	0	2	75	334
Dakota	0	2,787	14,888	39,965	0	57,641
Dodge	0	0	127	0	0	127
Faribault	0	15	0	0	0	15
Fillmore	0	14	74	916	0	1,004
Freeborn	0	1	230	0	0	231
Goodhue	0	25	7	0	0	32
Grant	0	0	0	72	0	72
Hennepin	0	0	10	269,025	267	269,302
Houston	0	0	0	97	0	97
Hubbard	0	180	0	0	0	180
Isanti	0	0	72	0	18	90
Itasca	0	0	0	0	0	0
Jackson	0	34	1,223	300	0	1,557
Kanabec	0	0	0	0	9	9
Kandiyohi	0	0	0	0	0	0
Kittson	0	0	0	0	0	0
Koochiching	0	0	4	12	0	16
Lac qui Parle	0	31	137	1	0	168
Lake	0	0	0	14	6	20
Lake of The Woods	0	0	0	0	0	0
Le Sueur	0	1	1,153	0	0	1,153
Lincoln	0	70	0	0	0	70
Lyon	8	875	1,338	1,633	0	3,853
Mahnomen	0	0	0	0	0	0
Marshall	0	0	0	0	0	0
Martin	0	8	0	0	0	8
McLeod	0	0	206	1,798	0	2,004
Meeker	0	0	800	118	0	918

County Survey Responses
Textiles, other collected for recycling (tons)

County	Carpet	Textiles	Pallets	Unspecified or Other	Mattresses & box springs	Total
Mille Lacs	0	0	0	0	2	2
Morrison	0	172	1,082	0	17	1,270
Mower	0	83	2,529	0	0	2,612
Murray	0	130	101	0	0	231
Nicollet	0	7	989	0	0	996
Nobles	0	366	1,914	0	0	2,280
Norman	0	0	0	4	0	4
Olmsted	550	500	0	4	0	1,054
Otter Tail	0	18	0	0	0	18
Pennington	0	0	0	1	0	1
Pine	0	0	25	0	23	49
Pipestone	0	266	1,668	0	0	1,934
Polk	0	0	0	5	0	5
Pope/Douglas	120	300	33	0	0	453
Ramsey	0	102	1	191,021	0	191,124
Red Lake	0	0	0	0	0	0
Redwood	19	1,319	550	6,491	0	8,379
Renville	0	45	0	0	0	45
Rice	0	573	3,136	0	0	3,709
Rock	0	39	428	0	0	467
Roseau	0	0	1,229	0	0	1,229
Scott	0	22	4,144	0	0	4,166
Sherburne	0	0	178	0	2	181
Sibley	57	0	13	0	0	70
St. Louis - partial	0	0	0	4	85	89
Stearns	0	0	808	0	0	808
Steele	0	161	1,790	19	0	1,970
Stevens	0	0	0	0	0	0
Swift	0	0	0	0	0	0
Todd	0	0	0	0	0	0
Traverse	0	0	0	0	0	0
Wabasha	0	0	0	5	0	5
Wadena	0	0	0	0	13	14
Waseca	0	0	144	142	0	286
Washington	0	12	0	4,487	0	4,499
Watsonwan	0	0	0	0	0	0
Wilkin	0	0	0	0	0	0
Winona	0	0	5,157	629	0	5,786
WLSSD	21	1,684	537	221	0	2,464
Wright	0	0	0	0	0	0
Yellow Medicine	0	105	0	136	0	241
Metro Area	46	5,830	19,981	509,706	274	535,837
Greater Minn.	786	8,292	44,272	14,938	297	68,585
Minnesota	832	14,122	64,253	524,644	571	604,422

County Survey Responses
Problem materials (banned) collected for recycling (tons)

County	Antifreeze	Electronics	Fluorescent & HID lamps	HHW	Latex paint	Major appliances	Used oil	Used oil filters	Vehicle batteries	Waste tires	Total problem matls
Aitkin	0	28	3	5	2	97	86	8	107	148	482
Anoka	79	381	29	5	110	2,012	268	157	2,058	671	5,768
Becker	1	78	2	6	9	258	47	15	200	170	785
Beltrami	3	160	4	22	8	336	36	21	273	123	985
Benton	0	22	0	7	14	241	32	19	246	80	663
Big Stone	0	10	1	1	1	32	11	3	33	48	141
Blue Earth	45	370	21	0	45	384	322	30	1,226	1,998	4,440
Brown	0	28	2	17	17	156	26	12	169	172	599
Carlton	5	43	3	2	8	280	202	25	217	122	906
Carver	3	419	8	46	73	547	73	43	560	183	1,954
Cass	0	124	4	15	5	198	23	13	175	405	962
Chippewa	1	17	3	0	0	95	18	6	86	358	583
Chisago	4	92	3	49	57	477	43	25	331	108	1,188
Clay	24	131	16	7	16	386	264	33	362	328	1,567
Clearwater	0	14	1	4	2	52	7	4	53	17	154
Cook	0	0	0	0	0	33	11	3	32	11	90
Cottonwood	0	10	1	1	3	70	9	5	72	83	256
Crow Wing	22	263	19	3	18	683	50	48	421	170	1,697
Dakota	123	5,296	76	116	274	2,404	321	187	2,459	801	12,058
Dodge	0	38	0	0	0	121	16	9	123	40	348
Faribault	2	32	1	2	1	98	15	9	89	41	290
Fillmore	5	314	5	0	16	125	17	10	128	42	662
Freeborn	1	19	0	0	0	188	25	15	192	63	501
Goodhue	0	30	0	0	0	277	37	22	283	92	741
Grant	0	30	3	3	3	36	5	3	37	12	131
Hennepin	36	2,920	40	76	809	7,014	935	546	7,175	2,338	21,889
Houston	0	90	0	188	0	114	16	9	119	215	751
Hubbard	0	152	9	0	0	123	56	10	125	350	825
Isanti	0	35	1	6	0	235	31	18	241	78	645
Itasca	2	73	4	0	0	750	36	21	277	90	1,253
Jackson	0	19	2	2	2	65	14	5	66	24	199
Kanabec	0	41	2	1	0	142	22	8	100	32	348
Kandiyohi	0	0	0	0	0	253	34	20	259	84	651
Kittson	0	4	1	0	2	27	4	2	28	9	77
Koochiching	0	19	1	2	0	80	11	6	82	27	226
Lac qui Parle	1	12	1	6	10	44	25	3	45	35	182
Lake	3	30	22	0	0	65	25	7	67	162	382
Lake of the Woods	0	0	1	2	5	47	3	3	25	84	170
Le Sueur	4	26	11	5	9	166	46	13	170	135	586
Lincoln	0	18	1	3	0	35	21	3	37	85	203
Lyon	0	0	5	12	3	155	21	12	159	52	419
Mahnomen	0	7	0	0	0	32	4	3	33	11	90
Marshall	1	6	1	1	1	57	8	5	61	40	181
Martin	4	46	33	6	2	177	35	15	176	96	590
McLeod	10	13	0	40	8	222	49	17	228	220	808
Meeker	0	56	20	14	0	140	19	11	143	47	449

County Survey Responses
Problem materials (banned) collected for recycling (tons)

County	Antifreeze	Electronics	Fluorescent & HID lamps	HHW	Latex paint	Major appliances	Used oil	Used oil filters	Vehicle batteries	Waste tires	Total problem matls
Mille Lacs	0	12	0	0	0	157	0	0	0	52	221
Morrison	7	198	5	0	11	199	201	16	204	424	1,264
Mower	3	17	1	0	14	235	31	18	240	78	638
Murray	0	4	1	0	0	52	7	4	54	17	140
Nicollet	3	27	22	7	7	214	26	15	211	77	610
Nobles	46	11	4	4	4	128	17	10	131	43	399
Norman	0	19	3	0	2	41	5	3	42	14	129
Olmsted	21	528	34	1	44	865	554	75	885	474	3,481
Otter Tail	2	114	4	43	47	344	46	27	352	115	1,091
Pennington	0	30	2	0	0	84	11	7	86	28	247
Pine	4	22	0	0	0	179	24	14	183	60	484
Pipestone	0	67	5	4	0	112	10	5	59	24	285
Polk	0	72	3	7	6	190	25	15	194	148	659
Pope/Douglas	22	463	19	6	14	284	0	22	290	95	1,214
Ramsey	0	154	0	0	0	3,107	414	242	3,178	1,036	8,130
Red Lake	0	6	1	3	1	46	12	2	25	20	116
Redwood	47	494	30	23	9	193	394	10	328	1,328	2,855
Renville	0	76	6	2	6	195	15	8	105	102	515
Rice	49	163	14	37	56	385	51	30	412	128	1,325
Rock	0	12	1	1	2	58	8	5	60	339	487
Roseau	4	24	14	5	2	178	26	10	112	32	407
Scott	236	128	15	128	86	786	2,676	114	804	335	5,308
Sherburne	1	176	4	0	88	1,310	71	41	543	177	2,412
Sibley	6	18	4	11	2	91	12	7	93	152	396
St. Louis – partial	30	322	11	66	0	2,504	556	40	521	1,114	5,164
Stearns	46	156	5	0	0	904	788	70	925	1,300	4,193
Steele	0	78	13	7	13	221	29	17	226	74	678
Stevens	0	39	0	9	0	58	8	5	60	19	198
Swift	0	32	4	0	0	65	9	5	66	22	202
Todd	2	37	2	0	0	149	20	12	153	128	503
Traverse	0	0	1	0	1	22	3	2	22	7	57
Wabasha	0	0	2	0	0	140	18	10	133	44	347
Wadena	0	36	3	2	8	83	11	6	180	28	357
Waseca	0	45	2	3	0	117	16	16	120	79	398
Washington	11	862	14	0	215	1,429	191	111	1,462	476	4,770
Watonwan	0	0	0	0	0	67	9	5	69	22	173
Wilkin	0	0	1	1	1	39	5	3	40	13	104
Winona	0	0	10	24	20	309	41	24	316	103	847
WLSSD	53	606	23	15	59	835	93	127	710	231	2,752
Wright	1	58	2	18	19	748	100	58	765	249	2,019
Yellow Medicine	0	5	0	2	0	234	8	5	64	21	339
Metro Area	488	10,159	182	371	1,566	17,299	4,878	1,399	17,696	5,840	59,878
Greater Minn.	485	6,465	461	734	701	19,586	5,040	1,278	16,273	13,888	64,911
Minnesota	973	16,625	643	1,105	2,267	36,885	9,918	2,677	33,969	19,728	124,789

County Survey Responses
Wastes generated (tons)

County	Estimated tons of MSW not collected	Problem matls not collected for recycling	Tons collected for recycling	Tons to MSW - landfill disposal	Tons to MSW - processing facilities	Total tons generated
Aitkin	275	213	2,314	9,158	0	11,959
Anoka	0	8,275	137,519	58,625	121,503	325,922
Becker	252	645	9,645	16,360	0	26,902
Beltrami	0	1,020	6,629	9,425	13,100	30,174
Benton	2,673	944	22,161	16,429	609	42,816
Big Stone	840	87	1,323	2,112	0	4,361
Blue Earth	1,219	802	70,062	26,134	19,880	118,097
Brown	1,480	516	16,424	12,950	0	31,370
Carlton	685	613	5,530	12,319	0	19,147
Carver	294	2,293	45,410	45,639	4,533	98,169
Cass	0	466	7,813	15,500	0	23,779
Chippewa	1,679	182	2,901	7,820	0	12,583
Chisago	420	1,278	8,356	21,924	0	31,977
Clay	248	1,026	19,343	27,821	0	48,437
Clearwater	126	219	925	1,540	2,496	5,307
Cook	29	121	1,201	4,363	0	5,714
Cottonwood	1,006	235	3,355	7,559	0	12,155
Crow Wing	232	1,405	28,349	35,558	0	65,544
Dakota	0	10,019	223,154	188,854	45,891	467,917
Dodge	911	507	4,834	1,646	6,091	13,988
Faribault	2,180	340	8,390	753	6,735	18,398
Fillmore	2,959	526	3,967	4,567	720	12,739
Freeborn	168	788	14,629	25,688	0	41,273
Goodhue	420	1,165	16,171	2,175	22,866	42,797
Grant	730	151	631	0	1,977	3,489
Hennepin	0	28,809	564,171	414,457	352,052	1,359,489
Houston	546	325	2,572	1,320	4,955	9,717
Hubbard	0	312	4,773	13,667	0	18,752
Isanti	1,259	933	11,369	23,919	0	37,480
Itasca	371	1,069	10,251	25,705	0	37,396
Jackson	840	243	4,212	4,592	606	10,493
Kanabec	27	376	1,988	7,674	0	10,065
Kandiyohi	420	1,065	7,478	27,477	0	36,439
Kittson	84	114	605	1,600	0	2,403
Koochiching	315	336	3,103	7,655	0	11,409
Lac qui Parle	1,424	144	2,915	3,286	0	7,768
Lake	504	170	2,222	4,721	0	7,618
Lake of The Woods	17	63	433	2,707	0	3,220
Le Sueur	1,039	595	9,476	8,256	7,056	26,422
Lincoln	414	85	1,018	1,802	0	3,319
Lyon	730	652	15,130	14,244	0	30,757
Mahnomen	91	137	665	19	1,742	2,654
Marshall	315	213	964	4,730	0	6,221
Martin	2,375	411	21,438	0	8,928	33,152
McLeod	2,099	752	15,279	16,949	0	35,079
Meeker	1,469	588	4,194	9,386	0	15,637
Mille Lacs	1,049	248	2,056	11,160	0	14,513

County Survey Responses
Wastes generated (tons)

County	Estimated tons of MSW not collected	Problem matls not collected for recycling	Tons collected for recycling	Tons to MSW - landfill disposal	Tons to MSW - processing facilities	Total tons generated
Morrison	378	397	15,597	13,352	0	29,724
Mower	1,238	988	19,554	25,058	0	46,838
Murray	756	220	2,323	3,134	0	6,432
Nicollet	1,102	786	15,203	8,569	8,666	34,326
Nobles	756	539	14,015	11,600	0	26,910
Norman	23	173	972	395	2,923	4,486
Olmsted	2,373	3,007	49,743	18,764	66,591	140,478
Otter Tail	831	1,445	9,605	7,250	22,447	41,579
Pennington	1,637	351	1,962	10,052	0	14,003
Pine	1,679	750	6,612	16,891	0	25,932
Pipestone	1,196	220	4,222	4,287	0	9,926
Polk	182	712	9,378	6,305	11,123	27,700
Pope/Douglas	504	467	13,434	2,137	22,030	38,572
Ramsey	0	12,688	294,061	139,467	183,083	629,299
Red Lake	8	76	730	1,483	0	2,297
Redwood	1,175	0	22,512	6,286	0	29,974
Renville	2,057	292	4,233	8,209	0	14,791
Rice	2,560	1,599	61,154	41,473	0	106,787
Rock	420	166	2,539	3,815	0	6,940
Roseau	668	348	8,413	8,551	0	17,980
Scott	10	1,206	54,767	48,538	10,751	115,273
Sherburne	168	2,099	34,450	36,499	15,431	88,647
Sibley	487	263	6,911	5,992	859	14,512
St. Louis - partial	333	846	53,204	50,347	0	104,730
Stearns	1,259	2,133	67,415	64,122	1,664	136,594
Steele	1,007	919	35,346	33,569	0	70,842
Stevens	401	245	1,490	3,383	2,141	7,660
Swift	1,048	232	3,741	3,481	0	8,502
Todd	840	550	12,525	3,883	6,174	23,971
Traverse	504	89	553	1,115	0	2,261
Wabasha	630	535	15,434	8,334	713	25,646
Wadena	378	343	7,561	1,998	6,166	16,445
Waseca	78	435	32,087	6,599	2,014	41,213
Washington	0	6,006	90,039	21,892	67,693	185,630
Watonwan	986	283	2,332	8,599	0	12,200
Wilkin	840	166	1,027	1,301	0	3,333
Winona	881	1,298	31,882	28,512	402	62,975
WLSSD	2,796	2,756	44,399	53,984	0	103,935
Wright	1,133	3,145	29,323	75,650	0	109,251
Yellow Medicine	944	248	1,953	3,582	0	6,727
Metro Area	304	69,295	1,409,122	917,472	785,506	3,181,700
Greater Minn.	68,174	51,203	1,020,927	1,041,231	267,105	2,448,639
Minnesota	68,478	120,498	2,430,048	1,958,703	1,052,611	5,630,339

County Survey Responses
Recycling rate

County	Tons collected for recycling	Total MSW generated	Percent of MSW collected for recycling	Source reduction credit	Yard waste credit	Recycling rate with credits
Aitkin	2,314	11,959	19.3%	3.0%	5.0%	27.3%
Anoka	137,519	325,922	42.2%	3.0%	5.0%	50.2%
Becker	9,645	26,902	35.9%	3.0%	5.0%	43.9%
Beltrami	6,629	30,174	22.0%	1.0%	5.0%	28.0%
Benton	22,161	42,816	51.8%	3.0%	5.0%	59.8%
Big Stone	1,323	4,361	30.3%	2.0%	3.0%	35.3%
Blue Earth	70,062	118,097	59.3%	3.0%	5.0%	67.3%
Brown	16,424	31,370	52.4%	1.0%	0.0%	53.4%
Carlton	5,530	19,147	28.9%	3.0%	5.0%	36.9%
Carver	45,410	98,169	46.3%	3.0%	5.0%	54.3%
Cass	7,813	23,779	32.9%	0.0%	5.0%	37.9%
Chippewa	2,901	12,583	23.1%	0.0%	5.0%	28.1%
Chisago	8,356	31,977	26.1%	3.0%	5.0%	34.1%
Clay	19,343	48,437	39.9%	3.0%	5.0%	47.9%
Clearwater	925	5,307	17.4%	2.0%	0.0%	19.4%
Cook	1,201	5,714	21.0%	3.0%	5.0%	29.0%
Cottonwood	3,355	12,155	27.6%	1.0%	5.0%	33.6%
Crow Wing	28,349	65,544	43.3%	8.0%	5.0%	56.3%
Dakota	223,154	467,917	47.7%	3.0%	5.0%	55.7%
Dodge	4,834	13,988	34.6%	3.0%	5.0%	42.6%
Faribault	8,390	18,398	45.6%	3.0%	5.0%	53.6%
Fillmore	3,967	12,739	31.1%	3.0%	5.0%	39.1%
Freeborn	14,629	41,273	35.4%	3.0%	5.0%	43.4%
Goodhue	16,171	42,797	37.8%	0.0%	5.0%	42.8%
Grant	631	3,489	18.1%	0.0%	5.0%	23.1%
Hennepin	564,171	1,359,489	41.5%	3.0%	5.0%	49.5%
Houston	2,572	9,717	26.5%	3.0%	5.0%	34.5%
Hubbard	4,773	18,752	25.5%	3.0%	5.0%	33.5%
Isanti	11,369	37,480	30.3%	2.0%	5.0%	37.3%
Itasca	10,251	37,396	27.4%	3.0%	5.0%	35.4%
Jackson	4,212	10,493	40.1%	3.0%	5.0%	48.1%
Kanabec	1,988	10,065	19.7%	2.0%	5.0%	26.7%
Kandiyohi	7,478	36,439	20.5%	2.0%	5.0%	27.5%
Kittson	605	2,403	25.2%	3.0%	5.0%	33.2%
Koochiching	3,103	11,409	27.2%	1.0%	5.0%	33.2%
Lac qui Parle	2,915	7,768	37.5%	3.0%	0.0%	40.5%
Lake	2,222	7,618	29.2%	1.0%	5.0%	35.2%
Lake of The Woods	433	3,220	13.4%	0.0%	5.0%	18.4%
Le Sueur	9,476	26,422	35.9%	3.0%	5.0%	43.9%
Lincoln	1,018	3,319	30.7%	3.0%	5.0%	38.7%
Lyon	15,130	30,757	49.2%	3.0%	5.0%	57.2%
Mahnomen	665	2,654	25.1%	3.0%	5.0%	33.1%
Marshall	964	6,221	15.5%	2.0%	5.0%	22.5%
Martin	21,438	33,152	64.7%	3.0%	5.0%	72.7%
McLeod	15,279	35,079	43.6%	2.0%	5.0%	50.6%
Meeker	4,194	15,637	26.8%	3.0%	5.0%	34.8%

County Survey Responses
Recycling rate

County	Tons collected for recycling	Total MSW generated	Percent of MSW collected for recycling	Source reduction credit	Yard waste credit	Recycling rate with credits
Mille Lacs	2,056	14,513	14.2%	0.0%	5.0%	19.2%
Morrison	15,597	29,724	52.5%	3.0%	5.0%	60.5%
Mower	19,554	46,838	41.7%	2.0%	5.0%	48.7%
Murray	2,323	6,432	36.1%	3.0%	5.0%	44.1%
Nicollet	15,203	34,326	44.3%	3.0%	5.0%	52.3%
Nobles	14,015	26,910	52.1%	3.0%	5.0%	60.1%
Norman	972	4,486	21.7%	0.0%	5.0%	26.7%
Olmsted	49,743	140,478	35.4%	3.0%	5.0%	43.4%
Otter Tail	9,605	41,579	23.1%	3.0%	5.0%	31.1%
Pennington	1,962	14,003	14.0%	2.0%	5.0%	21.0%
Pine	6,612	25,932	25.5%	0.0%	5.0%	30.5%
Pipestone	4,222	9,926	42.5%	3.0%	5.0%	50.5%
Polk	9,378	27,700	33.9%	3.0%	5.0%	41.9%
Pope/Douglas	13,434	38,572	34.8%	3.0%	5.0%	42.8%
Ramsey	294,061	629,299	46.7%	3.0%	5.0%	54.7%
Red Lake	730	2,297	31.8%	3.0%	5.0%	39.8%
Redwood	22,512	29,974	75.1%	3.0%	5.0%	83.1%
Renville	4,233	14,791	28.6%	3.0%	5.0%	36.6%
Rice	61,154	106,787	57.3%	3.0%	5.0%	65.3%
Rock	2,539	6,940	36.6%	3.0%	5.0%	44.6%
Roseau	8,413	17,980	46.8%	3.0%	5.0%	54.8%
Scott	54,767	115,273	47.5%	3.0%	5.0%	55.5%
Sherburne	34,450	88,647	38.9%	3.0%	5.0%	46.9%
Sibley	6,911	14,512	47.6%	3.0%	5.0%	55.6%
St. Louis - partial	53,204	104,730	50.8%	3.0%	5.0%	58.8%
Stearns	67,415	136,594	49.4%	1.0%	5.0%	55.4%
Steele	35,346	70,842	49.9%	2.0%	5.0%	56.9%
Stevens	1,490	7,660	19.4%	3.0%	5.0%	27.4%
Swift	3,741	8,502	44.0%	1.0%	5.0%	50.0%
Todd	12,525	23,971	52.2%	3.0%	5.0%	60.2%
Traverse	553	2,261	24.5%	1.0%	5.0%	30.5%
Wabasha	15,434	25,646	60.2%	3.0%	5.0%	68.2%
Wadena	7,561	16,445	46.0%	1.0%	5.0%	52.0%
Waseca	32,087	41,213	77.9%	1.0%	5.0%	83.9%
Washington	90,039	185,630	48.5%	3.0%	5.0%	56.5%
Watonwan	2,332	12,200	19.1%	0.0%	0.0%	19.1%
Wilkin	1,027	3,333	30.8%	2.0%	5.0%	37.8%
Winona	31,882	62,975	50.6%	3.0%	5.0%	58.6%
WLSSD	44,399	103,935	42.7%	3.0%	5.0%	50.7%
Wright	29,323	109,251	26.8%	2.0%	5.0%	33.8%
Yellow Medicine	1,953	6,727	29.0%	2.0%	5.0%	36.0%
Metro Area	1,409,122	3,181,700	44.3%	3.0%	5.0%	52.3%
Greater MN	1,020,927	2,448,639	41.7%	2.3%	4.7%	48.7%
Minnesota	2,430,048	5,630,340	43.2%	2.4%	4.7%	50.3%