



FILED  
Court Administrator

JUL 5 2011

By BH Deputy

The Arc Minnesota  
800 Transfer Road, Suite 7A  
Saint Paul, MN 55114-1414

T 651-523-0823 1-800-582-5256  
F 651-523-0829  
[www.arcmn.org](http://www.arcmn.org)

*Achieve with us.*

62CV115203

**Housing Access Services is a partnership of the Minnesota Department of Human Services and The Arc Minnesota and helps adults with disabilities of all ages move to homes of their own.**

**Housing Access Services helps:**

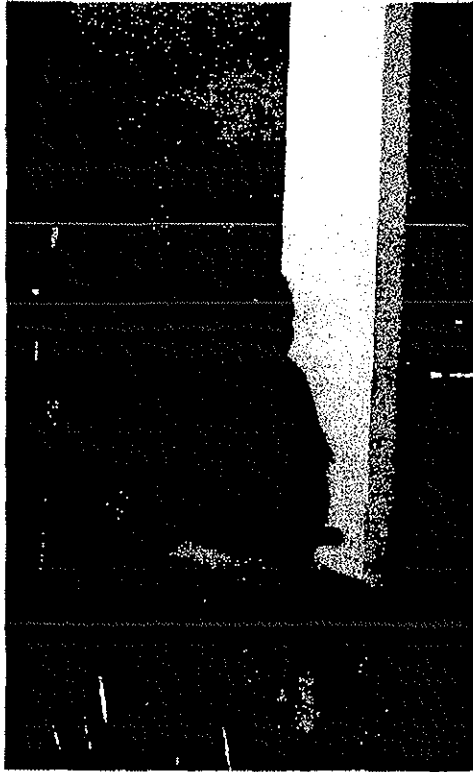
- Move people from group homes or assisted living to homes of their own.
- Find affordable and accessible housing for adults with disabilities who are homeless.
- Pay deposits, application fees, and moving-related costs.
- Negotiate with landlords or property management staff.
- Provide on-going help to people as they become acclimated in their new home.

**What happens if Housing Access Services is not funded?**

- More than 60 people statewide who have put in their notice or are currently homeless may not have an address.
- Participants who are in the process of moving may experience high-levels of anxiety if their plan for moving is disjointed or interrupted. This could lead to hospitalization and the possibility of significant life and safety concerns.
- Staff who provide this service may be without jobs.
- People who move to homes of their own as an alternative to group homes or assisted living save the State of Minnesota on average \$50,000 a year per individual. (Data available from August 12, 2010 study by the Minnesota Department of Human Services.)

**Housing Access Services is a critical support to people eligible for Medical Assistance home care or waiver services. It needs to continue operation during the state government shutdown.**

*For people with intellectual and developmental disabilities*



Housing Access Services received a call from a Benton County worker about Louis, a man with a disability who was homeless and living in his truck. As a result of this contact, Louis contacted Housing Access Services and was ready to move to a home of his own.

Louis was referred for a PCA assessment, was determined eligible, and was then provided with information and support to access MSA Shelter Needy funds. Housing Access Services had to turn over many stones to find a suitable and affordable place for Louis, because of a variety of reasons dating back to his past. Housing Access Services also paid his deposit and application fee, and helped

him find some suitable furnishings for his new home. During a visit to his new residence, he said, "I'm glad to be warm." He also mentioned, "I didn't think I would be living in such a nice place."



# Housing Access Services

A partnership of The Arc Minnesota and

The Minnesota Department of Human Services

Allotment #S187 Req#H55T76

Report for period April 2011 - June 2011



1. The Arc Minnesota has provided support to participants with and report to the STATE on such matters as:

- 1) Seeking and locating suitable, affordable, accessible housing,
- 2) Accompanying individuals as they look for housing.
- 3) Completing rental applications and lease agreements,
- 4) Meetings with landlords and property staff,
- 5) Knowledge of and applications for publicly financed housing,
- 6) Household budget development,
- 7) Furnishing a home, and any related housing matters.

The Arc Minnesota has helped 222 eligible Minnesotans relocate to their own homes in concert with their regional partners. The following charts represents numbers of movers using Housing Access Services quarterly between the period of July 1, 2009 and June 30, 2011 for a grand total of 222 people moved to homes of their own within a 24 month period. This is an average of about 11 people moved per month statewide.

**Housing Access Services Activities July 1, 2009 through June 30, 2011**

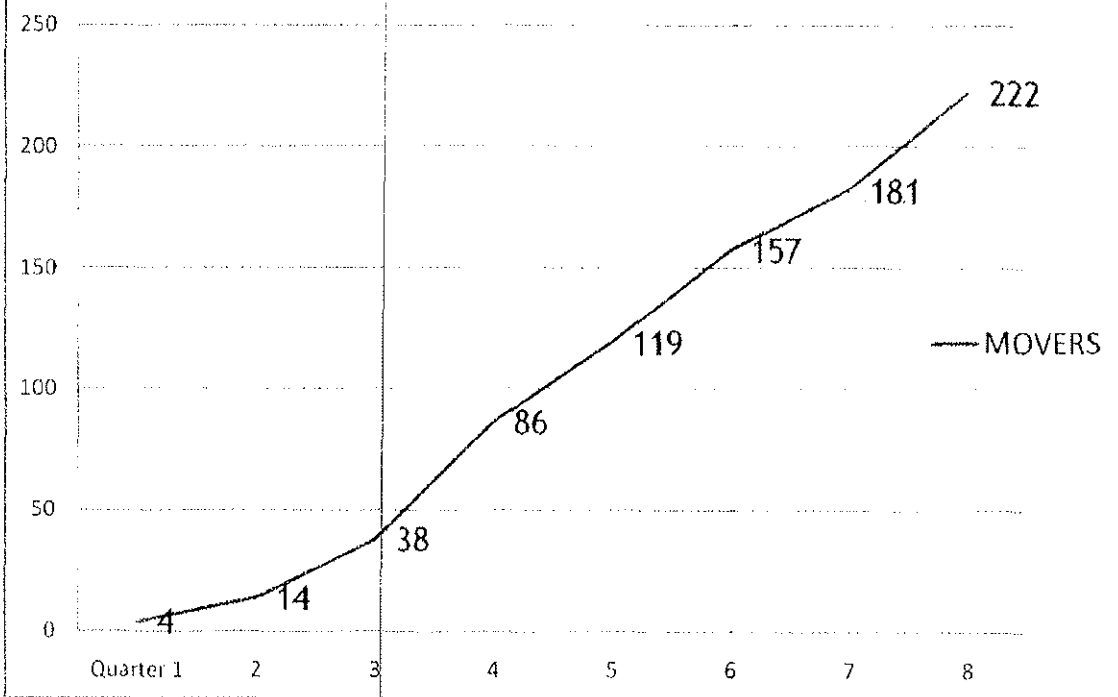
Activities	Q 1	Q2	Q3	Q4
Movers	4	10	24	48
Referrals	46	68	35	66
Outreach	104	128	68	68

**Housing Access Services Activities July 1, 2010 through June 30, 2011**

Activities	Q 5	Q6	Q7	Q8	Totals as of 6/30/2011
Movers	33	38	24	41	222
Referrals	34	50	107	301	707
Outreach	65	65	49	93	640

# Housing Access Services

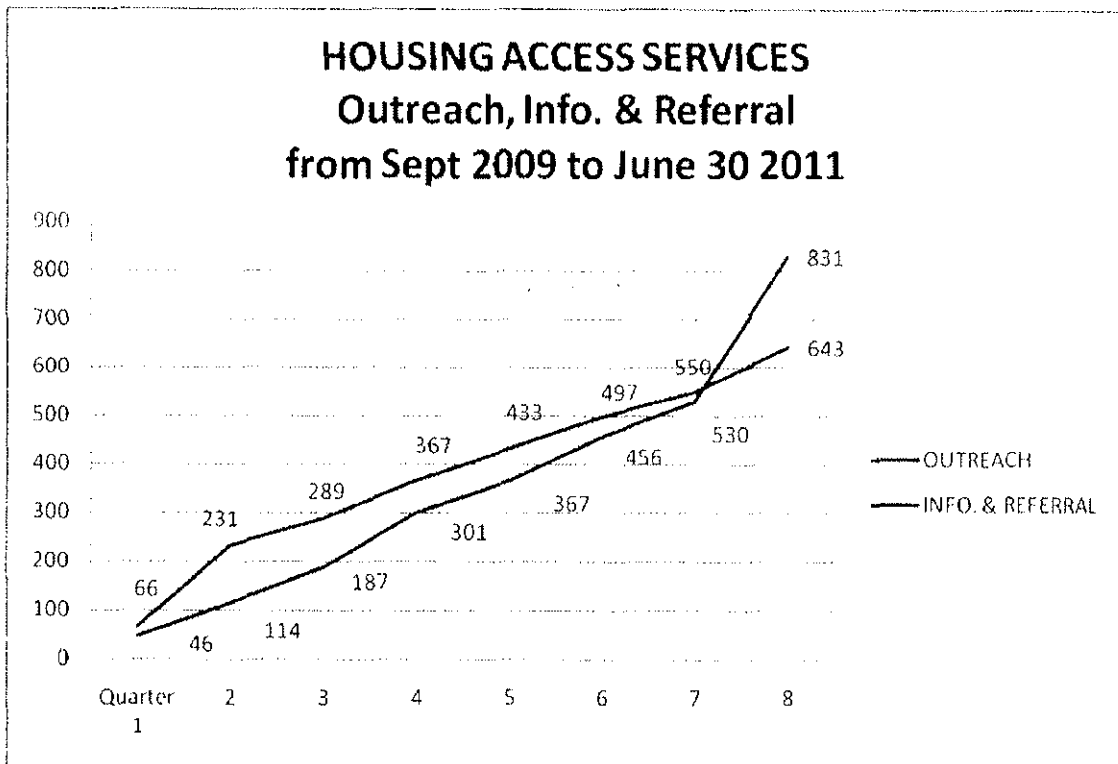
## Total People Moved From Sept 2009 to June 30 2011



2. Outreach to agencies within proposed area of service, including but not limited to:

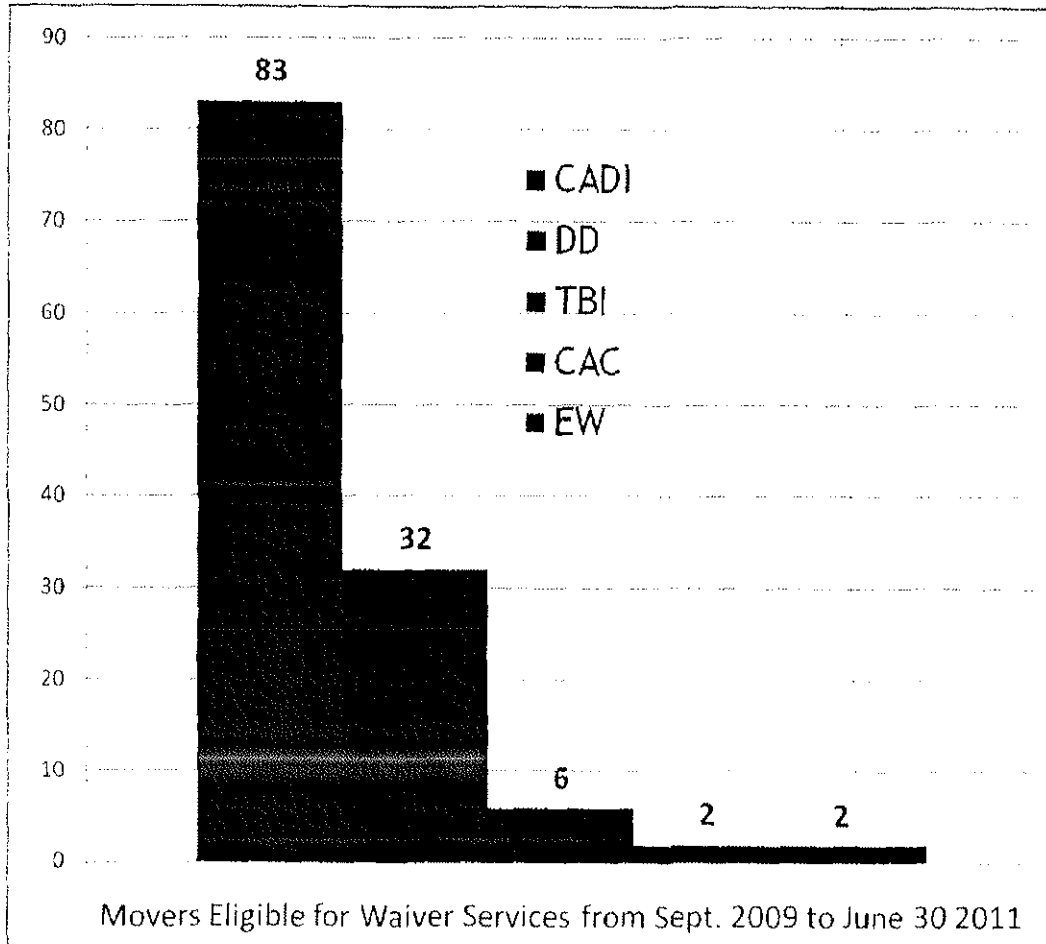
County Human Service and Public Health agencies, Mental Health Organizations, Agencies and Services Providers, Regional Assistive Technology Collaborative, The Minnesota Consortium for Citizens with Disabilities, People First of Minnesota and Self Advocates of Minnesota, MN DHS Disability and Senior Linkage Lines, MNHelp.Info, Minnesota Centers for Independent Living, Institute on Community Integration, University of Minnesota, Minnesota Governor's Council on Developmental Disabilities, National Association of Mental Illness Minnesota, ARRM, Minnesota Housing Finance Agency, PACER, Gillette Lifetime Specialty Healthcare, Brain Injury Association of Minnesota, Minnesota Board on Aging, Minnesota Senior Federation.

Housing Access Services Outreach for the project totals 643 opportunities and many of which have been solicited on multiple occasions. Total referrals rendered are 831 from September 2009 to June 30 2011. In April 2011 The Arc Minnesota began tracking all calls related to Housing which creates a sharp increase of actual calls related to housing. Previous data collected from Sept. 2009 through March 2011 was specific to Housing Access Services information and referrals. Detailed data is attached to this report inclusive of all agencies that The Arc Minnesota has provided targeted outreach as contracted with MN-DHS.



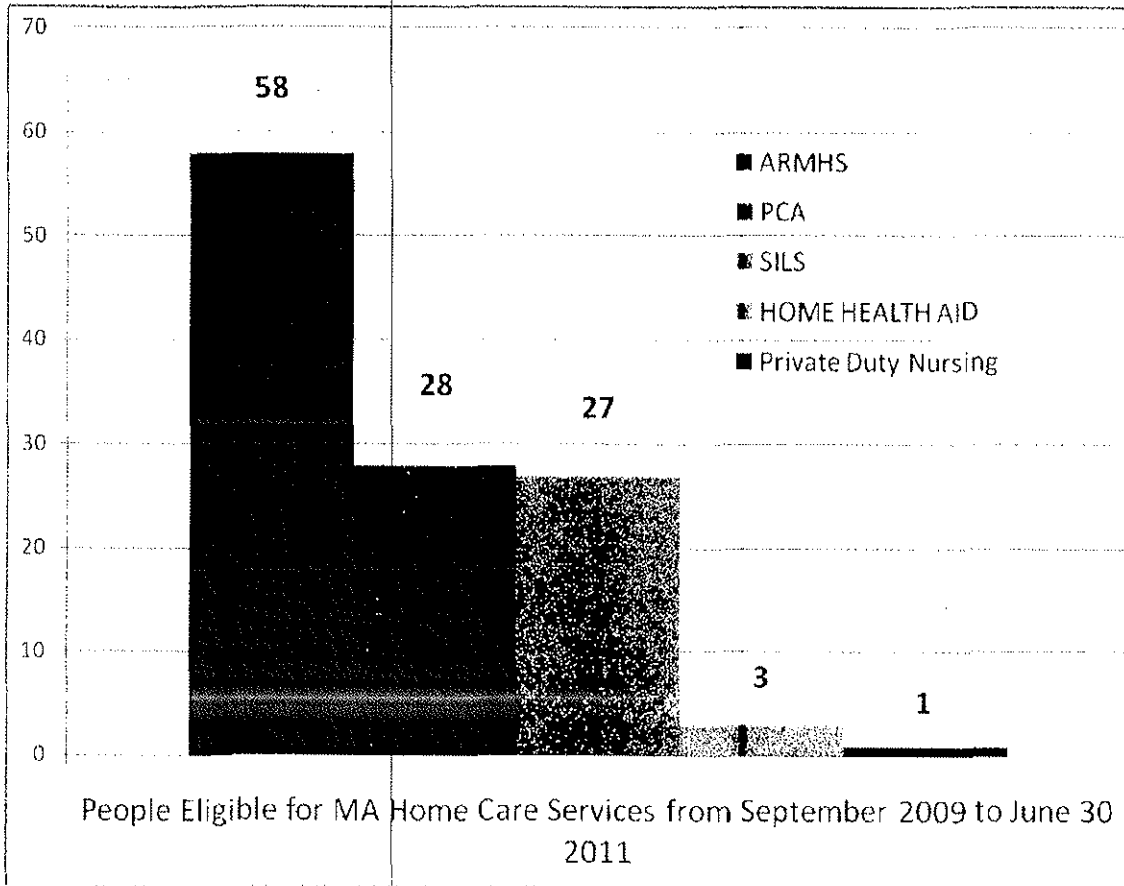
3. The Arc Minnesota and its regional partners continue to monitor the status of existing and mandated federal funded disability housing vouchers for people with disabilities statewide. Currently most if not all waiting lists are currently closed in the state of Minnesota.
4. All participants are identified by name, date of birth, address, county, phone number, and MA home care or non residential waiver service. All data relevant to referrals and people moved are included as an MSExcel document included with this report.
5. The Arc Minnesota has coordinated housing services and support available from other programs, such as Minnesota Supplemental Aid Sheltered Needy Grants. To date The Arc Minnesota has helped 53 or 24% of the 222 people who have moved access shelter needy and have provided information to many others eligible to access the program. Moreover, The Arc Minnesota has worked diligently in outreach efforts to lead agencies to clarify misconceptions about the eligibility parameters of shelter needy funds. The Arc Minnesota has also accessed regional community agencies statewide that provide support in the area of housing and/or disability in efforts to help people move.
6. The Arc Minnesota informs all individuals of their rights and responsibilities and has specific written policies of information that is shared with participants such as information to contact the Minnesota Department of Human Rights and information that services can be terminated at any time if the participant is not satisfied with the service offered.
7. The Arc Minnesota will comply with any DHS required evaluation, including financial and program reporting.
8. The Arc Minnesota has purchasing and payment systems in place for grant funded management via (Fund-EZ accounting software) that tracks and records any grant related payments.
9. Financial Documentation required by the State is attached to this report.
10. The Arc Minnesota inquires with every property management agency to assure there is not an overconcentration of people with disabilities defined as serving 7 or more persons that exceeds one-half of one percent of the population of a recognized planning district or other administrative subdivision and
11. Assures all project staff do not have conflict of interest, defined as a direct or shared financial interest with a participating landlord, property owner, or controlling individual, or has a personal relationship or family relationship with a party involved with a residential property involved in the project.

12. Housing Access Services movers eligible for waiver services from September 2009 through June 30 2011.

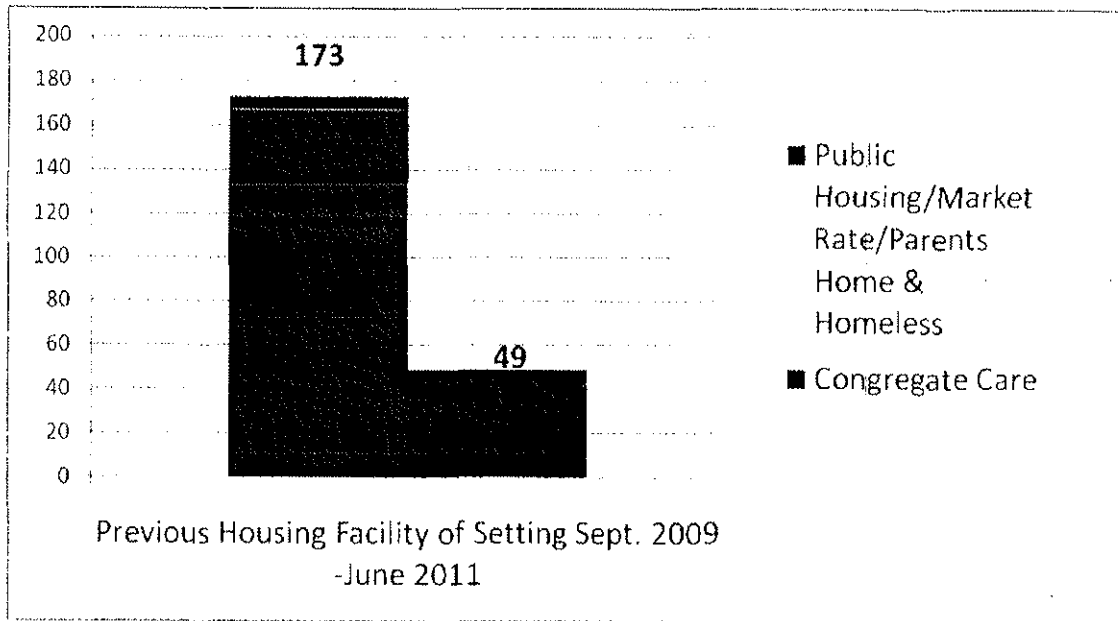




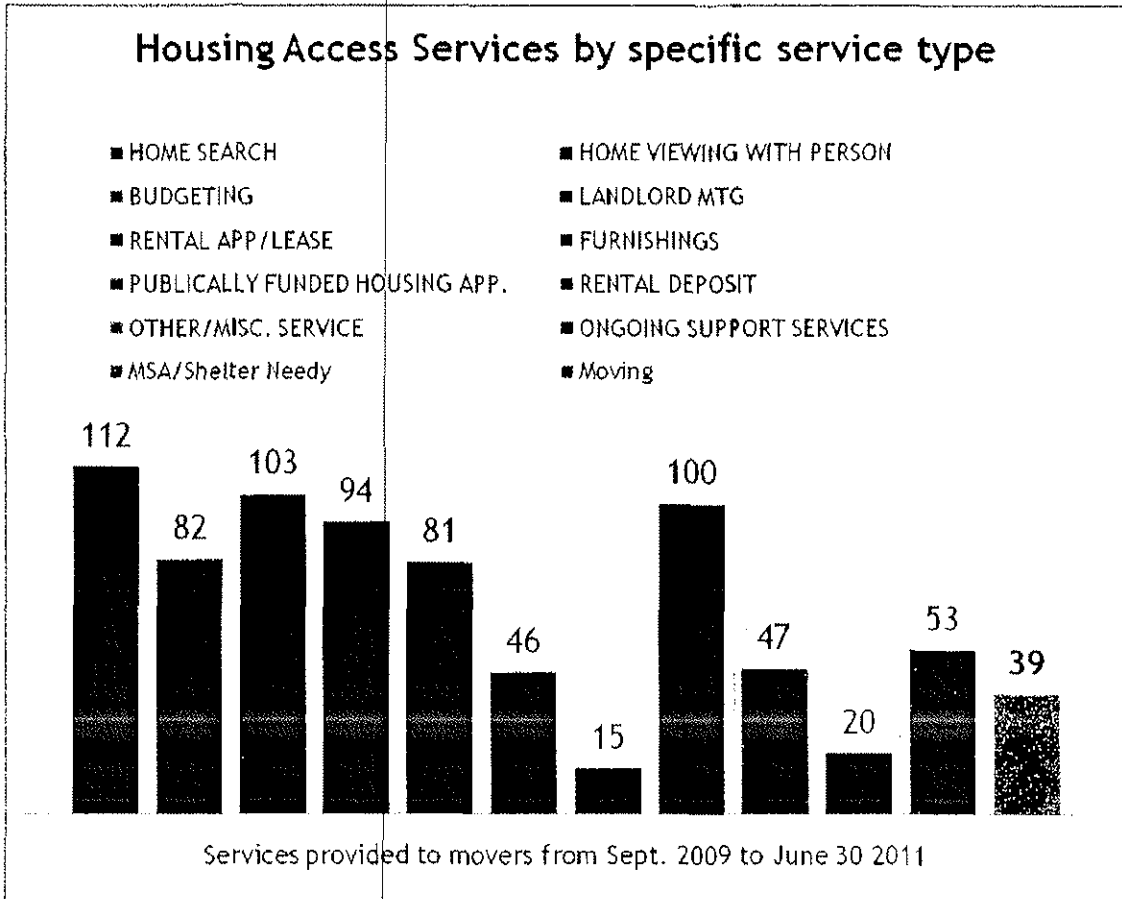
13. Housing Access Services movers eligible for Medical Assistance Home Care Services from September 2009 through June 2011.



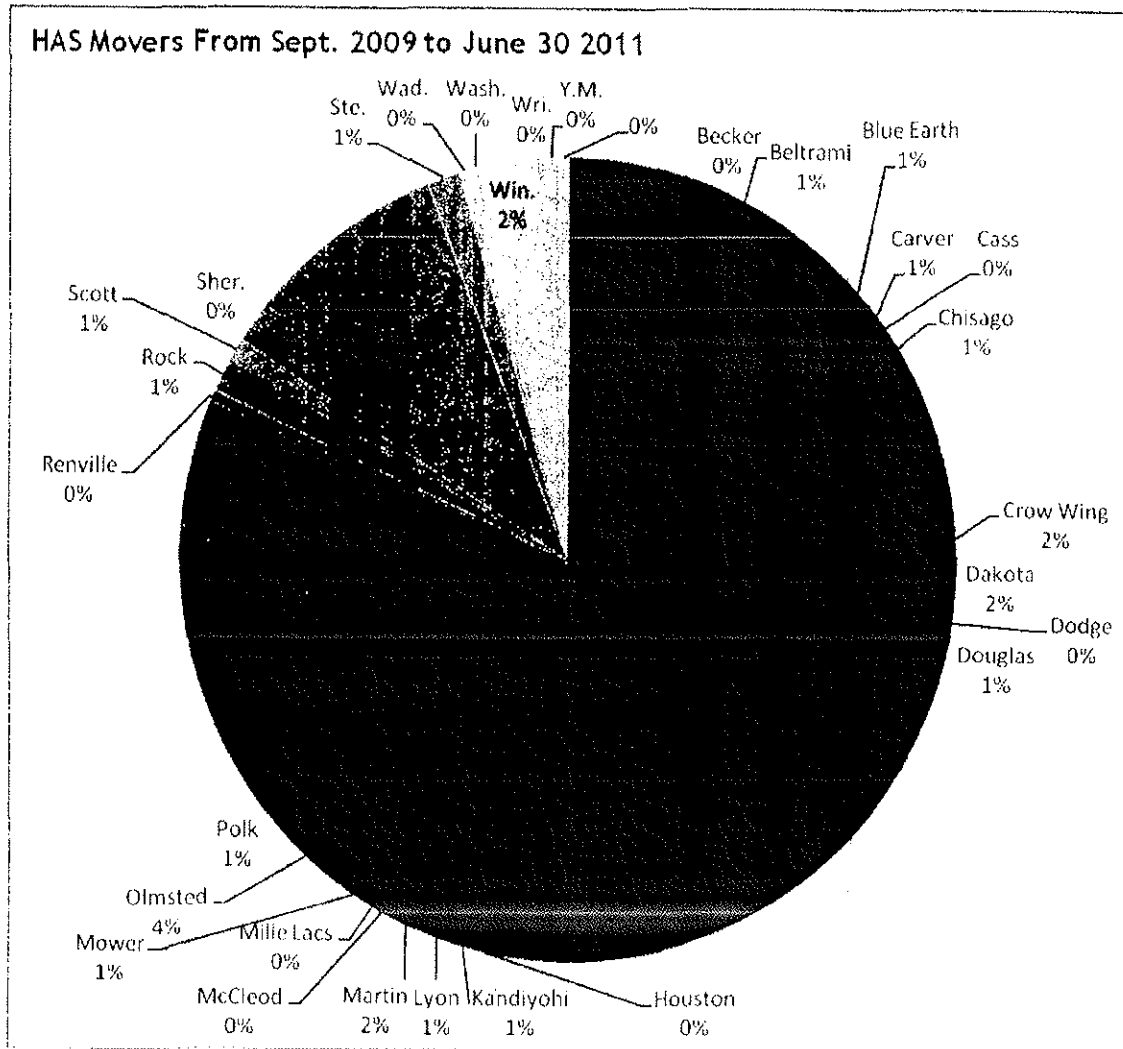
14. Housing Access Services has moved 173 people who are considered diversions or people who have avoided congregate care settings and has moved 49 people who are considered conversions directly from congregate care facilities.



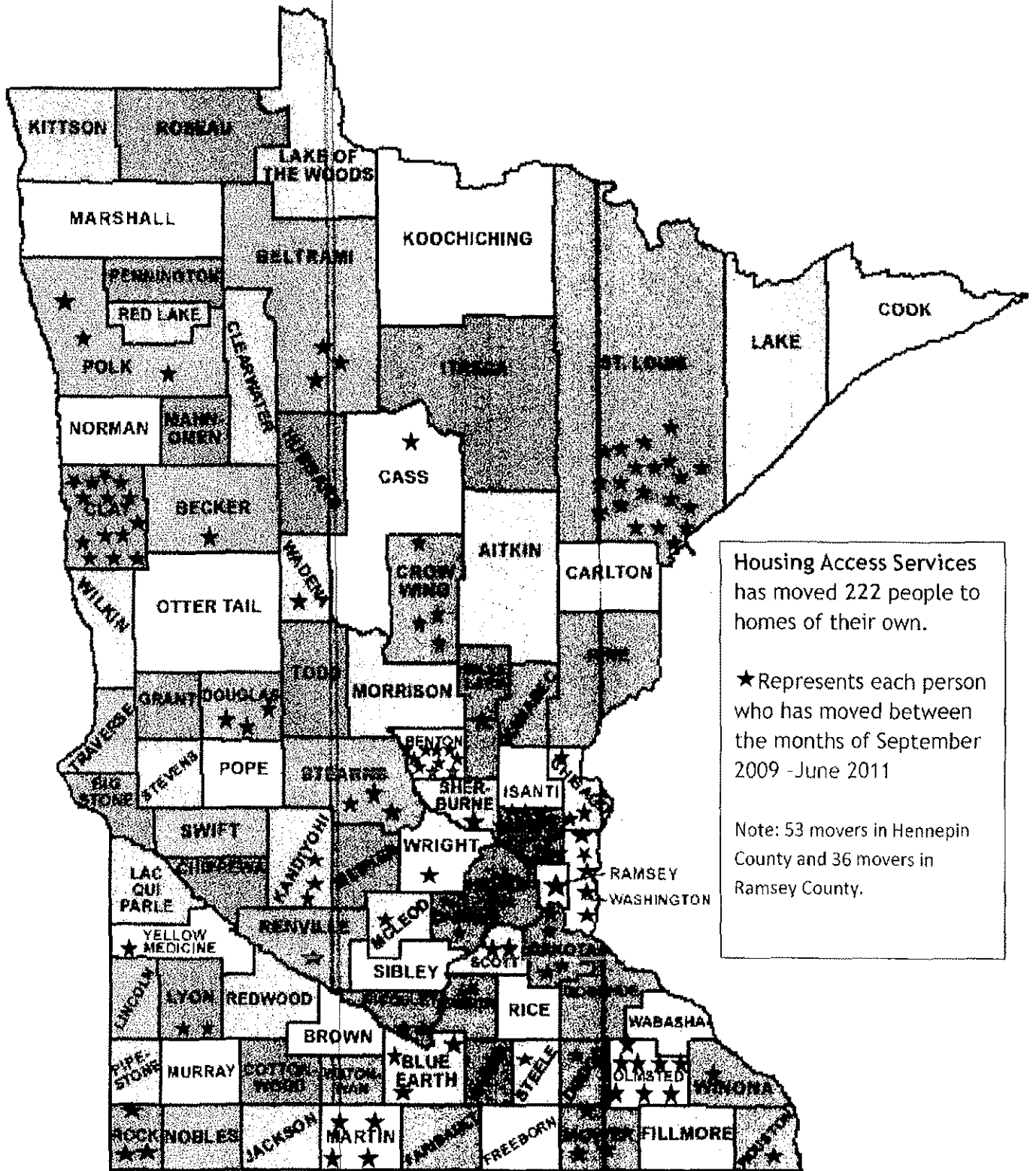
15. Housing Access Services provides a variety of support to movers and the chart below illustrates the numbers of specific services offered to eligible movers. Any combination of the services are offered to eligible movers.



16. Housing Access Services has moved people across age and disability type in 36 of Minnesota's 87 counties. Outreach in a variety of formats has been provided in all 87 Minnesota Counties.



# Housing Access Services Minnesota Map: Sept. '09-June '11



Housing Access Services has moved 222 people to homes of their own.

★ Represents each person who has moved between the months of September 2009 - June 2011

Note: 53 movers in Hennepin County and 36 movers in Ramsey County.

*Do you want more freedom,  
independence and privacy?*



*Do you want to choose who you live  
with and where you live?*



The Arc Minnesota has been a leader in  
advocating and supporting people with  
disabilities and their families in  
Minnesota for nearly 60 years.

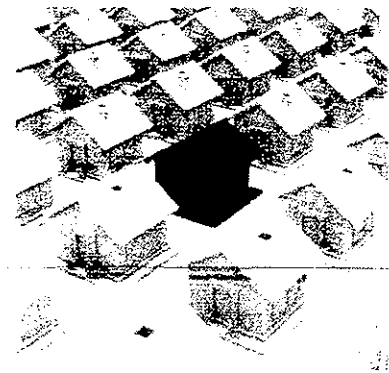


Minnesota Department of **Human Services**

For more information contact:  
The Arc Minnesota 651-523-0823 ext 101  
or  
[www.thearcofminnesota.org](http://www.thearcofminnesota.org)

# Housing Access Services

A partnership of  
The Arc of Minnesota  
& the Minnesota Department  
of Human Services



## Are you ready to move?

## What are Housing Access Services?

Housing Access Services helps eligible Minnesota adults with disabilities seek and locate suitable, affordable, accessible housing.



*Housing Access Services can  
help you find a place to call  
home*

## Who is eligible for Housing Access Service?

Adult Minnesotans of all ages who have been assessed as eligible for Minnesota Medicaid home care or waiver services and who want to move to homes of their own.

## We can help you move!

### Housing Access Services can:

- Help people move to a place of their own from a group home or assisted living facility.
- Accompany you when you look for housing.
- Help complete rental applications and lease agreements.
- Meet and negotiate with landlords or property staff.
- Help with applications for publicly financed housing.
- Help develop household budgets.
- Assist with finding affordable furnishings and related household matters.
- Pack and move your belongings.
- Assist with application fees and deposits.

### Who do I call?

Services are offered statewide. If you do not see your area listed, contact The Arc of Minnesota toll free 1-800-582-5256 or visit [www.thearcofminnesota.org](http://www.thearcofminnesota.org) and click on chapters to view their full service areas.

## Contact Information

The Arc Minnesota (Metro area)  
651-523-0823 ext. 101  
[mail@arcmn.org](mailto:mail@arcmn.org)

The Arc Midstate (St. Cloud area)  
Contact: Deb Wenz  
[housing@arcmidstate.org](mailto:housing@arcmidstate.org)

The Arc Kandiyohi County (Willmar area)  
Contact: Mary Rhude 320-231-1777  
[arckandi@clearwire.net](mailto:arckandi@clearwire.net)

The Arc Mower County (Austin area)  
Contact: Tammy Flicek  
507-433-8994, ext. 103  
[tflicek@arcmowercounty.org](mailto:tflicek@arcmowercounty.org)

The Arc Northland (Duluth area)  
Contact: Tom Engstrom 218-461-2220  
[tengstrom@arcnorthland.org](mailto:tengstrom@arcnorthland.org)

The Arc Southeastern Minnesota (Rochester area)  
Contact: Melissa Evans 507-287-2032 or 1-888-732-8520  
[melissa@arcse-mn.org](mailto:melissa@arcse-mn.org) -or-  
Debbie Monahan [dmonahan@arcse-mn.org](mailto:dmonahan@arcse-mn.org)

The Arc Minnesota Southwest (Mankato/Marshall areas)  
Contact: Lee Ann Erickson 1.800.427.2895  
[leeannje@frontiernet.net](mailto:leeannje@frontiernet.net)

The Arc United (Central to Northwest Minnesota areas)  
Contacts:  
NorthWest MN: Cass Robinson 1-800-450-7338  
[arcnw@paulbunyan.net](mailto:arcnw@paulbunyan.net)  
Central MN: Galen Smith 651-285-5364  
[galen.d.smith@gmail.com](mailto:galen.d.smith@gmail.com)

Arc West Central (Moorhead area)  
Contact: Kathy Brinkman  
1-800-411-0124  
[kbrinkman@702com.net](mailto:kbrinkman@702com.net)