



R
5
D
C

2010 Annual Report

Vision

Strategy

Leadership

Serving;

Cass

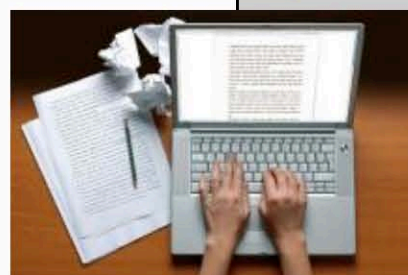
Crow Wing

Morrison

Todd

Wadena

Counties



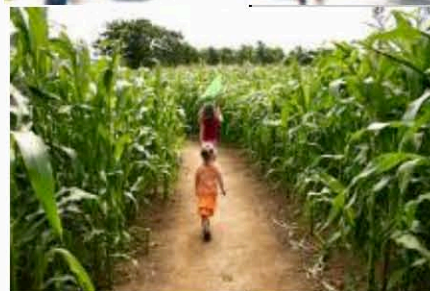
Economic Development



Transportation



Community Development



Local Foods & Energy

**5 Counties,
One Vision,
One Source!**

Vision

Strategy

Leadership

R5DC Mission

To provide high quality, professional planning and development services through collaboration, assistance, and coordination with local units of government, organizations, and citizens. Our principal objective is to enhance the vitality and quality of life in Cass, Crow Wing, Morrison, Todd, and Wadena counties.

R5DC Role

To “fill the holes.” We do not attempt to duplicate efforts of the private, public, or non-profit sectors. Our job is to help people, organizations and agencies meet their potential in our region and to facilitate any work that is not being done that will allow us to achieve our shared goals and missions.

Annual Report Purpose

To inform the Commission and the region of all staffs' success in meeting the goals summarized in the Commission approved FY2010 Work Plan. It's a way for the region to measure our value through the achievement of outlined objectives, benchmarks, and goals.



Table of Contents:

<i>Chairperson report</i>	3
<i>Commission and Staff</i>	4 & 5
<i>Executive Director letter</i>	6
<i>Financials</i>	7
<i>Economic Development</i>	8 & 9
<i>Community Development</i>	10
<i>Local Foods</i>	11
<i>Energy Initiatives</i>	12 & 13
<i>Transportation</i>	14 & 15
<i>What's on the horizon</i>	16
<i>Photo Gallery</i>	17



403 Prairie Avenue North East, Suite 100
Staples, MN 56479
Phone: (218) 894-3233 Fax: (218)894-1328
Email: info@regionfive.org
Website: www.regionfive.org

Region Five Development Commission

From Our Chairman

Greetings to all,
Again it is with great pleasure that I submit this letter to the Commission on another good year for R5DC. The Commission, Executive Director, and Staff have continued to work together in accomplishing our goals for 2010.

Our staff has stepped up to meet the challenges of our region in developing strategies to elevate R5DC as one of the top, (if not the top) regional development groups in this great state of Minnesota.

Two big items hit R5DC as an extreme positive endeavor. First was the receiving of the HUD grant for \$825 thousand dollars. R5DC was one out of 45 awards in the nation, that is designed to promote "smarter and sustainable planning" for jobs and economic growth. The only other award in Minnesota went to the Twin Cities Metropolitan Council. "By bringing together rural communities across Central Minnesota, the R5DC solves problems that would otherwise be impossible to tackle." As quoted from Senator Al Franken.

Second, was the Federal Transportation grant of \$7.56 million dollars, to the City of Staples and Todd County, for the construction of a North/South corridor and overpass. (Above the BNSF Railroad and new HWY 10) The \$9.85 million dollar project will require NO tax dollars from the City of Staples or Todd County. This not only creates a regional transportation corridor but even on a greater scale, a big safety enhancement for emergency services (fire, police, and ambulance). Thus taking away an average daily delay of over 3 hours because of heavy train traffic blocking vehicle movement on MN 210 and 7th St. crossing.

On a side note, I would like to personally thank Mr. Chris Etzler on behalf of the Commission, in his endeavors as R5DC Transportation Planner. Even though he left R5DC in July of this year his commitment was excellent. Our new Transportation Planner Mr. Jake Huebsch continues this commitment to R5DC and has done a great job thus far.

Kim Burkett is our new VISTA Program Coordinator. She has many talents to move this program along in a very positive manner.

My sincere appreciation goes out to Cheryal Hills, Jake Huebsch, Lee Miller, Anne Hanson, Kicky Larson, Angela Headlee, Tad Erickson, Kim Burkett, Nicole Scheler, and our new Office Specialist Morgen Martin. For without their faithful support, dedication and enthusiasm we would go nowhere.

Also, I would like to thank the Commission members for your involvement in R5DC, to make R5DC the best region in the state.

Sincerely and respectfully submitted,



Mark Blessing
Chairman
2009-2010

Vision

Commission Representation

CASS COUNTY

Robert Kangas, Commissioner
William Bliss, Township Association
Mel Rateike, Municipalities

CROW WING COUNTY

Rosemary Franzen, Commissioner
Mark Platta, Township Association
Brian Lehman, Municipalities

MORRISON COUNTY

Tom Wenzel, Commissioners
Paul Niemen, Jr., Township Association
Andrea Lauer, Municipalities

TODD COUNTY

Mark Blessing, Commissioners
Alan Perish, Township Association
Joel Quance, Municipalities

WADENDA COUNTY

Dave Schermerhorn, Commissioners
Maxine Norman, Municipalities
William Kern, Township Association

CITY OF BRAINERD

Lucy Nesheim, Brainerd City Council,
(representing municipalities over 5000 in
population)

COUNCIL OF GOVERNMENTS

Chuck Parins, Morrison County Areal
Council of Governments

Strategy

SCHOOL BOARDS

Sharon Ballou, Little Falls School Board
Katy Botz, Pine River-Backus School Board

SPECIAL INTEREST GROUPS

Robert Becker, Crow Wing County Soil & Water
Conservation
Craig Nathan, Rural MN CEP
Vacant, Tribal Council

Commission members annually exercise leadership through:

Personnel Policy and Operations Manual Review, By-Law Review, Outreach planning, planning of every-other-year Regional Success Meeting, Budget/Indirect Cost plan budgeting.

Commissioner Committees

Commission member engage in quarterly brainstorming sessions with staff members through committee meetings. Committee Chair communicates program ideas to full Commission for review and direction.

ECONOMIC DEVELOPMENT

Staff: Lee Miller

Chair: Lucy Nesheim
Mel Rateike
Bob Kangas
Craig Nathan

Leadership

Top row: Brian Lehman
Paul Neiman
Bill Kern, Sharon Ballou, Bob Kangas, Mark Platta, Alan Perish, Joel Quance.
Lower row: Chuck Parins, Katy Botz, Mel Rateike, Lucy Neishman, Tom Wenzel, Rosemary Franzen.
In front: Mark Blessing, Dave Schermerhorn.



Region Five Development Commission

Committees continued.....

TRANSPORTATION

Staff: Jake Huebsch
Chair: Mark Blessing
Mark Platta
Tom Wenzel
Paul Neiman, Jr.

ENERGY/GRANT & LOANS

Staff: Cheryal Hills
Chair: Andrea Lauer
Alan Perish
Bob Becker
Brian Lehman

OUTREACH

Staff: Anne Hanson
Chair: Joel Quance
Maxine Norman
Sharon Ballou
Rosemary Franzen

COMMUNITY & ECONOMIC DEVELOPMENT

Staff: Tad Erickson
Chair: Dave Schermerhorn
Bill Bliss
Bill Kern
Chuck Parins
Katy Botz

FINANCE/BUDGET/PERSONNEL

This committee is comprised of the Board of Directors and only meets to create a draft budget in early May.

Staff: Nicky Larson



Top row: Nicky Larson, Angela Headlee, Kim Burkett, Cheryal Hills, Morgan Martin, Ann Hanson.
Bottom row; Lee Miller, Jake Huebsch, Tad Erickson.

BOARD OF DIRECTORS

Mark Blessing	Chair
Mel Rateike	Vice Chair
Brian Lehman	Secretary
Alan Perish	Treasurer
Tom Wenzel	Director
Bob Becker	Director
Bill Kern	Director

ADMINISTRATION

Cheryal Lee Hills, Executive Director
Nicky Larson, Finance Director
Morgan Martin, Office Specialist

TRANSPORTATION

Jake Huebsch, Transportation Planner

COMMUNITY & ECONOMIC DEVELOPMENT

Tad Erickson, Community & Eco. Dev. Planner

ECONOMIC DEVELOPMENT

Lee Miller, Economic Dev. Director
Ann Hanson, Eco. Dev. Coordinator

LOCAL FOODS VISTA

Kim Burkett, VISTA Volunteer

ENERGY

Angela Headlee, Central CMAERC/CERT regional organizer



Vision

Strategy

Leadership

FROM OUR EXECUTIVE DIRECTOR



I get up every day hoping that what I do makes a difference in someone's life. That sounds pretty profound and trusts me.... it is difficult, but the Region Five team members, Commissioners and many of our partners make this notion conceivable.

This FY2010 Annual report will **briefly** highlight the many programs of R5DC. While Region Five can provide a litany of statistical achievements we presume that you'd prefer and enjoy hearing specific success stories. No worries for the "data lovers" the legislature mandates Regional Development Commissions to issue a 5-year report which will be packed full of indicators and measurements and is slated for publication in 2011.

R5DC prefers to measure the value of our work on how our efforts improve the quality of life within our region.

Economic Development planning and submission of Federal EDA grant applications are regarded as indispensable by many in the region. The Commission has confidence that by job creation from loans provided through our revolving loan fund that innovation and entrepreneurship is retained and directly improve our quality of life.

R5DC trusts that replacement of failed septic systems through our ISTS loan program preserve the watersheds and our natural resources. Additionally, R5DC has assurance that through effective hazard mitigation planning communities are better prepared for disasters and ultimately maintain quality of life.

I have witnessed that by being engaged in the work of local foods, energy efficiency and renewable energy advancement, broadband and micropolitan planning that we are meeting the "new norm" demands of the region.

Coordination of the Transportation Advisory Council's program is rewarding and has fused a gratifying relationship with MnDOT, county engineers and representatives from all of the T-modes, but other transportation initiatives such as Safe Routes for Schools, trails and transit planning are equally valued by the region.

Through continued work with our local units of government conversations are being initiated regarding shared services and training opportunities.

The Commission has confidence that through a regional approach of coordinated various services we have the potential to maximize efficiency, save money and in some cases deliver a better service. Planning and delivery of selected services through a regional approach is the true intent and fulfillment of the MN State Statute that created Regional Development Commissions.

FY2010 was a fantastic year despite the variance in financials. Among other lessons learned, we entered into FY2011 with a better understanding of how to budget in times of less levy funding and adequately prepare for costly personnel changes.

In the FY2011 we eagerly initiate the work of the R5DC Sustainable Communities Regional Plan funded by HUD and will be intensive in our efforts to expand Active Living, PACE and Micro-lending programs, as improving the quality of life for the people within our region.....through collaboration, assistance and coordination with local units of government, organizations and citizens.....is what we strive for!

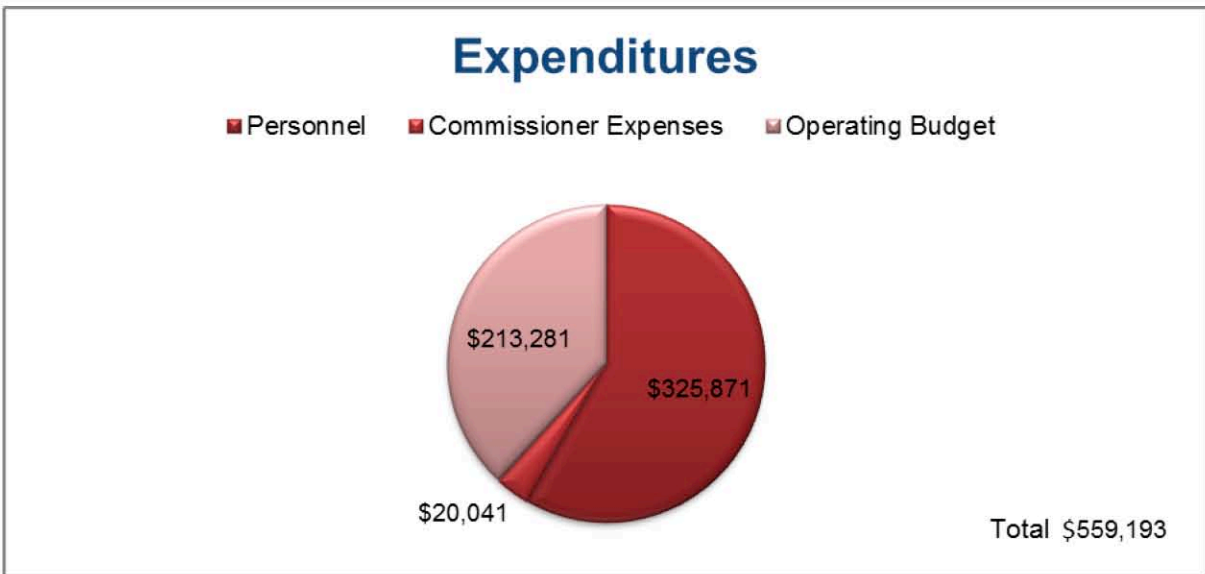
Thank you for allowing me to be part of the regions success.



Cheryal Lee Hills
Executive Director

Region Five Development Commission

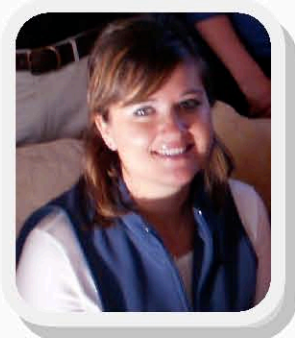
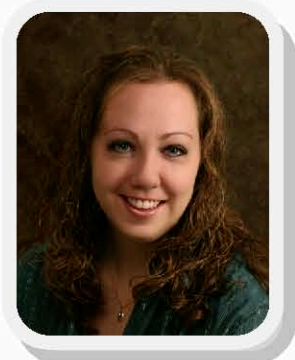
FY 2010 Financial Report



FY 2010
 Total Revenue - \$541,856
 Total Expenditures - \$559,193
 Net Income (Loss) – (\$17,337)



Nicky Larson
Finance
Director



Morgen Martin
Office
Specialist

Vision

Strategy

Leadership

ECONOMIC DEVELOPMENT PROGRAM HIGHLIGHTS



Main programs:

Management of the R5DC subsidiary “The North Central Economic Development Association” and the revolving loan fund.

Coordination of Network 5 meetings.
Regional JobZ administrator.

As the regions economic development authority R5DC develops the Comprehensive Economic Development Strategy (CEDs) and applies to EDA for infrastructure improvements.

Administrator of Individual Septic Treatment System loans. (ISTS) and **new** USDA Household Water Well Loan program. (HWWP)

Quarterly publication of the Township News.
Economic Development Planning in Todd and Wadena Counties.

Success Stories:

Manufacturer Appreciation Luncheon

R5DC hosted a manufacturer’s appreciation luncheon on Oct. 29 to honor and recognize the contributions of area businesses in the manufacturing sector during Minnesota Manufacturing Week.

Attending the gathering at Central Lakes College, Staples Campus, were more than 80 businesses, students and partners. Partners in the event were the area chambers of commerce from Brainerd, Long Prairie, Morrison County, Staples and Wadena.

Economic Development Administration

R5DC continues to be recognized as an economic development district by the federal EDA. This designation allows R5DC to act as the local district liaison in coordinating funding requests to EDA.

R5DC completed a Peer Review on September 15th. Minnesota EDR John O’Leary and Lake Agassiz RDC staff traveled to Staples to conduct

the review. Department staff was asked to participate as a reviewer the East Central RDC peer review. EDA Center state wide broadband survey EDA Center Intern program

Todd County Development Corporation

Staff facilitated meetings of a steering committee charged with reviewing the operating structure of the Todd County Development Corporation (TCDC) and to offer recommendations to Todd County Commissioners in the county’s reorganization efforts of the TCDC. As part of the process, a new Board of Directors was identified and confirmed to the organization.

Network 5

Region Five convenes and coordinates a group of economic development professionals bi-monthly. Economic developers throughout the region formed Network 5 ten years ago as a means to share project and program information.



*Lee Miller
Economic
Development
Director*



*Ann Hanson
Economic
Development
Coordinator*

Region Five Development Commission

Wadena Tornado Recovery Efforts

Staff has been vigorously assisting the city of Wadena with their recovery efforts following a June 17th EF-4 tornado. R5DC's primary role has been to assist in the relocation efforts of businesses that were adversely affected by pursuing funding opportunities for infrastructure projects that will enable the businesses to rebuild their operations within the City.

Innovative Surfaces

In August of 2009, NCEDA joined the Wadena Development Authority, Initiative Foundation and DEED to extend a financing package that enabled Innovative Surfaces, a faux table top manufacturer, to relocate operations from Arizona to Wadena. Innovative is the primary supplier of table tops to Homecrest Outdoor Living. This deal helped to bring 20 new manufacturing positions to Wadena, as well as foster a local supply chain.

Smude Enterprises



L-R: Lee Miller – NCEDA, Carol Anderson- CDMC, Tom Smude, Julie Anderholm – SBDC, Sandy Voigt

In the fall of 2009, NCEDA teamed up with the Initiative Foundation and Community Development of Morrison County to fill in the final gaps of a financing package that enabled Smude Enterprises to purchase equipment needed to go into the production of cold pressed sunflower oil. The Smude Enterprises deal has resulted in a regional outlet for local sunflower growers to sell their seed to as opposed to shipping it over 300 miles away to markets that can refine the seed. Owner Tom Smude processes the seeds and bottles the oil

for retail and wholesale markets. Other entities that contributed to this project were the Small Business Development Center of Brainerd for business planning and technical assistance for market development provided by AURI. Mr. Smude continues to make strides in expanding marketing efforts and developing additional markets for his oil.



Representatives of Larson Boats, Initiative Foundation, NCEDA, Community Development of Morrison County, and City of Little Falls

Larson Boats

The NCEDA partnered with the Minnesota Department of Employment and Economic Development (DEED), the Initiative Foundation, City of Little Falls EDA, and Community Development of Morrison County to extend a financing package that helped to fill in the final gaps of a complex \$7.4 million deal that kept the Larson Boat Company's manufacturing facility open in Little Falls. The financing package helped to retain 170 full-time jobs in Little Falls, which pay an average of \$15 per hour with benefits. Larson hopes to add another 150-175 more jobs over the next two years.

Other NCEDA activity
NCEDA partnered with other local, regional and state agencies on four other deals that resulted in the retention of approximately 79 manufacturing jobs and the creation of 30 new full time employment opportunities.



COMMUNITY DEVELOPMENT PROGRAM HIGHLIGHTS



Main programs:

Micropolitan Planning project coordination.
Hazard Mitigation Planning.
Blandin Broadband initiative.

Coordination The R5DC History Coalition meetings.

Meeting coordination of the 5-county Administrators.

Organization of Legislative Visits.
Browerville Comprehensive Plan.

Completion of a Crow Wing County recreational inventory.

Success Stories:

Obesity in children is a significant public health problem in the United States. The number of adolescents who are overweight has tripled since 1980 and the prevalence among younger children has more than doubled. According to the 1999-2002 NHANES survey, 16 percent of children age 6-19 years are overweight.

Being overweight during childhood and adolescence increases the risk of developing high cholesterol, hypertension, respiratory ailments, orthopedic problems, depression and type 2 diabetes as a youth.

Obesity poses serious long term challenges both to the health of individuals but also to the rising cost of healthcare costs nationwide.

Therefore, as a direct approach to addressing these challenges the Statewide Health Improvement Plan (SHIP), in conjunction with Region Five Development Commission, is committed to the physical health and well being of the members of the community.

In order to support that commitment, the Crow Wing County SHIP Coordinator asked Region Five to conduct a thorough inventory of the

recreational facilities, programs and classes in Crow Wing County.

The purpose of the inventory is to catalogue, document, and highlight recreational opportunities that members of the community can engage in that promote active, healthy lifestyles. Without the knowledge of what opportunities exist, individuals are less likely to take advantage of the opportunities that may enhance their overall health, well being, and quality of life.

The Recreational Inventory is intended to be a comprehensive catalogue of recreational facilities, programs, & classes within Crow Wing County. The inventory was designed for ease of use and provides those seeking recreation within Crow Wing County categorized lists of recreational activities from which to search from.

The inventory can be found at: <http://www.regionfive.org/>



Tad Erickson
Community & Eco. Dev. Planner

Region Five Development Commission

LOCAL FOODS PROGRAM HIGHLIGHTS

Main programs:

In partnership with the University of Minnesota Regional Sustainable Development Partnerships on a model distribution and controlled storage system.

Published a Pine and Lake Country Local Foods Catalog.

Conducted Farm-to-School and Farm-to-Institution and Community Garden planning.

Working with county Statewide Health Improvement Program (SHIP) to forward local food initiatives.

Administrated 6 mini-grants for community gardens.

Success Stories:

Kim has been making connections between local growers and producers and various restaurants, schools, hospitals, and I am developing numerous partnerships throughout the Region.

R5DC VISTA has been involved in everything from the Pine and Lake Country group to the Blue Zones Initiative conducted by the Morrison County Community Collaborative. These partnerships are assisting me greatly in my work and will continue to assist me in my efforts to fight poverty by important relationship building.

Kim has been actively involved with Stephanie Heim, the MN Farm to School Coordinator, University of MN Extension, and SHIP.



Recently Kim was contacted by the Mayor of Royalton to attend a presentation on some Community Initiatives including active living and local foods efforts in Morrison County.

There are a few Farm to School projects in the early stages that we currently assisting with, and once they are up and running, the kids and their families will be able to see the value of a healthy diet and the value of a strong local economy. Kim was able to be present to watch the very first Farm to School "vegetable wagon" being served in Brainerd's South Campus

Other projects Kim has assisting with include; the use of EBT machines at farmer's markets, coupons to farmer's markets for WIC clients, and various healthy community activities.

Kim was able to be part of a think tank that researched ideas on what to do with the Brainerd High School Farm that is currently unoccupied, and my push for a large community garden was taken under consideration and is currently being reviewed.



Kim Burkett
Local Foods VISTA

Vision

Strategy

Leadership

ENERGY PROGRAM HIGHLIGHTS



Main programs:

Conducted Neighborhood Energy Workshops. (NEW's) Quarterly published E-News newsletter.

Coordinated **S**ister **A**ccountable for **S**ustainability (SASSY) workshops.

Collaborated with Central Lakes College for course/training development.

Promoted several Clean Energy Resource Team (CERT) campaigns.

Assisted several Cities in signing onto the GreenSteps program.

Conducted energy planning with companies.

Moving forward the Central Minnesota Alternative Energy Regional Collaborative (CMAERC) work-plan.

Success Stories:

There are many items listed above that could be elaborated upon but only a few will be discussed in this section. All of the listed items serve a greater good in our Region with regards to energy efficiency, conservation, renewable energy, energy-related training, energy education, job creation, economic development, and energy-related business development.

The Neighborhood Energy Workshops (NEWs)

are a great economic development tool for several reasons. First, the workshops educate consumers about energy efficiency, conservation, and renewable energy concepts. This leads to energy savings which, in turn, leads to saving money.

Energy efficiency and conservation puts additional dollars in the pockets of consumers which is an economic benefit to the community. Second, the consumers are educated about energy audits. When these consumers have an

audit done on their homes this puts energy auditors to work! Last, but not least of the reasons to be mentioned here, the money saved on utility bills can be used to make larger home improvements projects which involve purchasing insulation, windows, and other energy improvement products at a local business establishment.

"For every dollar invested in efficiency, consumers save \$4 – money that can be spent in other areas of the economy." (Environment Northeast, *Energy Efficiency*)

The promotion of the GreenStep Cities program has been one of the 'mini-campaigns' of the Clean Energy Resource Teams. Angela has actively promoted the program to various cities in the five county area. Several cities in this region have signed city resolutions to strive for GreenStep City status.



Angela Headlee
CERT-CMAERC Organizer

Vision

Strategy

Leadership

ENERGY PROGRAM HIGHLIGHTS

The core group of the Hwy 371 cities including Pine River, Jenkins, Pequot Lakes, Nisswa, Breezy Point and Crosslake are actively pursuing or investigating the possible concept of a corridor approach to the GreenStep program. (more of a regional approach)

“Minnesota GreenStep Cities is a challenge, assistance and recognition program to help cities achieve their sustainability goals through implementation of 28 best practices.

Each best practice can be implemented by completing one or more specific actions from a list of four to eight actions. These actions are tailored to all Minnesota cities, focus on cost savings and energy use reduction, and encourage innovation.” (<http://www.mngreenstep.org>) This program was developed to create a pathway to sustainability for cities.



Workforce Development

Angela has been extremely active in assisting Central Lakes College with their training and certification program development. Angela serves on the Solar Train the Trainer Advisory Board through the Minnesota Renewable Energy Association in conjunction with the Midwest Renewable Energy Association.

This relationship has led to the selection of several regional individuals attending and receiving Solar Trainer certification through a \$3.3 Million federal grant awarded to Midwest

Renewable Energy Association (MREA, www.the-mrea.org). These Trainers will provide solar installation training through Central Lakes College.

CLC is one of the very few institutions selected to deliver this training. Other programs that will now be delivered through CLC include the BPI certification (Building Performance Institute, www.bpi.org),

Energy Resource Advisory certification, (a program developed in conjunction with Winona State University, Clean Energy Resource Teams, and others) and the Energy Auditor Program (in conjunction with Dunwoody Institute).

An additional program that has stemmed from the addition of these courses includes a future Wind Train the Trainer Program. Angela will continue to push for the development of a site assessor program for both solar and wind. These programs poise our region for becoming a premier training center in Minnesota and feed directly into an extremely vital workforce development need in this economic climate.

All of the programs listed above are crucially important in the areas of economic development, education, workforce development and energy security.

Vision

Strategy

Leadership

TRANSPORTATION PROGRAM HIGHLIGHTS



Main programs:

Coordination of Transportation Advisory Council (TAC) meetings; allocation of federal transportation funding and enhancement projects.

Completion of a regional trails inventory mapping project with the UofM EDA Center.

MnDOT Transit Investment Plan.

Pierz and Pillager Safe Routes for School Plans. Trails Planning.

Success Stories:

The purpose of our transportation initiatives are to ensure safe efficient movement of people and commodities in the region. Provide an ongoing forum for important transportation issues in the region and to assist Mn/DOT and provide input with its planning efforts and programs.

Coordination of Transportation Advisory Council. The Transportation Advisory Council met four times in calendar year 2010. Each meeting was coordinated and facilitated by Region Five Transportation Staff. At the February meeting candidate projects for the 2014 State Transportation Improvement Program (STIP) were reviewed and ranked.

Staff also participated in Area Transportation Partnership (ATP) activities including the development of the Area Transportation Improvement (ATIP) and the State Transportation Improvements Programs (STIP). The development of the ATIP and STIP required coordination between local road authorities and state and federal funding sources.

Throughout the year staff worked to fulfill the program obligations of the Minnesota Department of Transportation Mn/DOT planning grant contract by monitoring local, state and federal transportation programs. Staff provided

information and was used at a resource to local units of government.

Staff was involved in numerous trail planning: including: the Camp Ripley Veterans State Trails, Staples Trail Committee, Mississippi River Trail, Crow Wing County Trails Plan, and assisted in the Regional Trails Inventory Plan.

Staff continued to monitor regional transit services and participated in the review and ranking for Section 5310 public vehicles and assisted in the Central Minnesota Freight Study Plan. In addition, staff has begun initial work in updating the Browerville Comprehensive Plan and work in the area around Active Living.



*Jake Huebsch
Transportation Planner*

Region Five Development Commission

Greater MN Transit Investment Plan

Region Five has worked with Mn/DOT on developing the Greater Minnesota Transit Investment Plan.

Through this plan Mn/Dot will have a better understanding and analysis of ridership and total transit service needs throughout Greater Minnesota, calculation of the level and type of service required to meet total transit service needs, costs and revenue options, and the development of investment priorities.

Through this year long planning process Mn/DOT and the Regions developed the Transit Investment Plan. Staff presented final draft of the plan on Nov 4, 2010. More information can be found on thMn/DOT web-site.

Safe Routes to School planning

Staff completed the Pierz Safe Routes to School project. The project Safe Routes to School (SRTS), plan promotes walking and biking to school to achieve a wide range of benefits for students, school and community.

These benefits include reduced traffic in the vicinity of schools, improved pedestrian/bicycle access and safety and increased physical activity among students, contributing to healthy lifestyles. This plan was presented to the Pierz City Council on November 22, 2010. Safe has started the second SRTS plan for the Pillager School District.

Transparency and attention to detail from our Board.



With sincere gratitude we thank our partners who fund our projects/initiatives/work that allow "US" to create regional successes.

FY2010 Funding Agencies:

Federal -

FEMA, National Association Development Organizations, EDA, Dept. of Ag, USDA, AmeriCorps, HUD/DOT/EPA.

State -

Minnesota Department Of Transportation, Department of Employment & Economic Development, Office of Energy Security, Clean Energy Resource Teams, Statewide Health Improvement Program.

Local -

Regional Sustainable Development Partnerships, Blandin Foundation, Initiative Foundation, Otto Bremer Foundation, Bush Foundation, Greater MN Housing Partnership.

Chris Etzler saying good-by.



Board members carefully consider all options.



Region Five Development Commission



So what's on the Horizon? →

Awarded HUD Grant of \$825,050.00 for Sustainable Communities Regional Plan

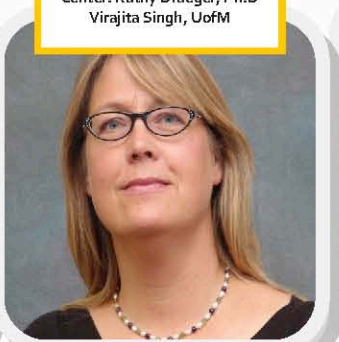


Many people committed to sustainability!



HUD Grant writing team included R5DC's Cheryal Hills and...

Right: Stacey Stockdill, Ph.D
Center: Kathy Draeger, Ph.D
Virajita Singh, UofM



CERT's team

To create a Community-driven University-assisted partnership around planning sustainable regions that will integrate the disciplines of Housing, Transportation, Natural Environment (land use) and Economic Development (including energy and local foods) that will encompass in-reach strategies through HIGHLY involved civic engagement in efforts to build an inclusive region that will provide opportunities, be free from discrimination and improve the quality of life of ALL residents.

"Community" is defined as multitude of private, public and non-profit agencies as well as the citizens of the region.

"Region" is defined as; Crow Wing, Cass, Morrison, Todd and Wadena Counties located in central Minnesota.



RSDP, Linda



Region Five Development Commission

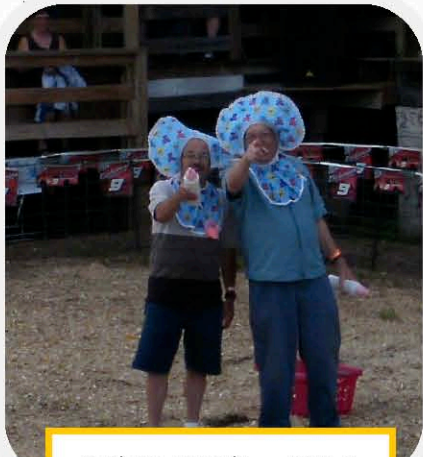
PICTURE GALLERY



Visit from Senator Al Franken. Mayor Walin, Cheryal Hills, Craig Nathan, Dale Benson, Becky Best, Kathy Gaalswyk, Deb Wallace a few at the table.



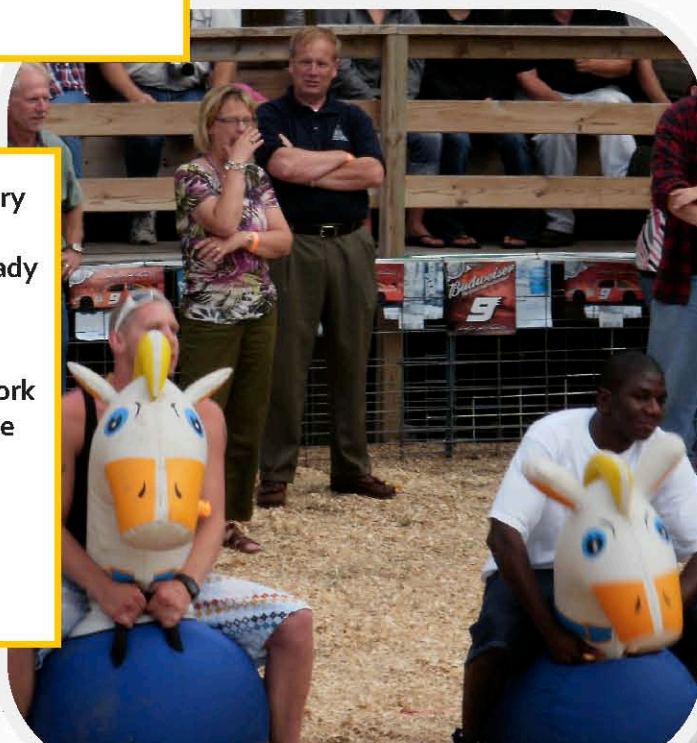
The Commissioners gather at the Pig Races to celebrate our regional successes. Leader Minnesota.



Serious sports.....Dave and Bill!

State Senators Mary Olson and Dan Skogen getting ready to take their turn!

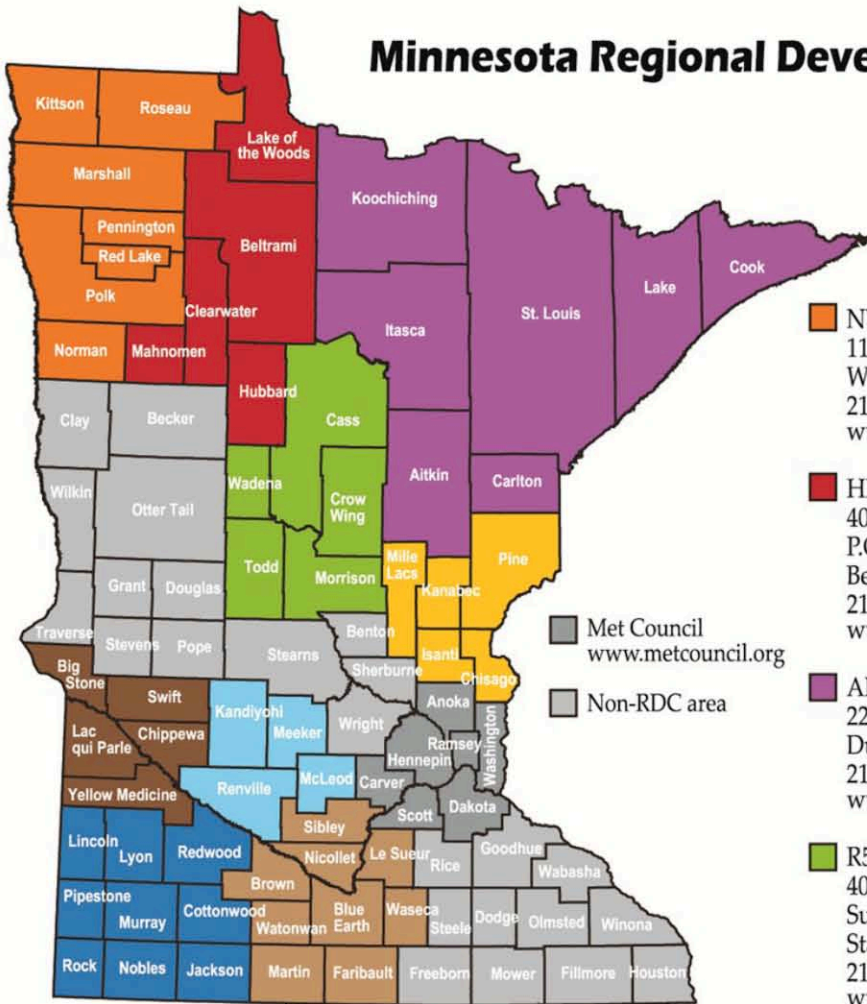
We appreciate the partnership and work of our regions State and Federal legislators!



To all of our Federal, State and Local elected Officials and our partner agencies who work beside us daily to make this a wonderful region to live, work and play..... we thank you!

To the sister/brother Regional Development Commissions across the state we feel your strife and marvel at your perseverance and achievements. Thank you for your camaraderie and guidance.

Minnesota Regional Development Commissions



10/2010

UMVRDC
323 W Schlieman Ave
Appleton, MN 56208
320-289-1981
www.umvrdc.org

NWRDC
115 S Main Ave
Warren, MN 56762
218-745-6733
www.nwrdc.org

MMDC
333 SW 6th St, Suite 2
Willmar, MN 56201
320-235-8504
www.mmrdc.org

HRDC
403 4th St NW
P.O. Box 906
Bemidji, MN 56601
218-444-4732
www.hrdc.org

ECRDC
100 S Park St
Mora, MN 55051
320-679-4065
www.region7erdc.org

Met Council
www.metcouncil.org

Non-RDC area

ARDC
221 West 1st St
Duluth, MN 55802
218-722-5545
www.ardc.org

SRDC
2401 Broadway Ave
Suite 1
Slayton, MN 56172
507-836-8547
www.swrdc.org

R5DC
403 Prairie Ave NE
Suite 100
Staples, MN 56479
218-894-3233
www.regionfive.org

Region 9
10 Civic Ctr Plaza, Suite 3
P.O. Box 3367
Mankato, MN 56002
507-387-5643
www.rndc.org



Vision

Strategy

Leadership

403 Prairie Avenue North East, Suite 100 Staples, MN 56479
Phone: 218-894-3233 Fax 218-894-1328 Email: info@regionfive.org Website: www.regionfive.org