

# MISSISSIPPI HEADWATERS BOARD



## BIENNIAL REPORT

**1989-1991**



## **LETTER TO THE 1991 MINNESOTA LEGISLATURE**

For the fifth time, pursuant to the requirements of Minnesota statutes, the Mississippi Headwaters Board reports on the status of its program and operations to the Minnesota Legislature.

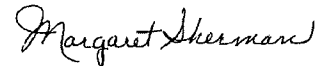
The previous biennium has been a time of both reflection and growth for the Mississippi Headwaters Board.

The Board and its advisory committees have conducted a thorough review of the 1981 management plan, conservation ordinance and corridor under the Board's jurisdiction. Proposed changes to these documents have been recommended as a response to demographic changes of the Mississippi Headwaters region, changes in the Minnesota state law, development of the Mississippi Headwaters River Resources Inventory, and consistent administration of zoning.

In this biennium, the Mississippi Headwaters Board has launched the Mississippi Headwaters River Watch, an ambitious program of river water quality monitoring and protection. The MHB's five-year plan of action, reported in its previous biennial report, called for improved information on water quality of the Mississippi River. This initiative has become a major activity supported by a \$472,000, five-year grant from the Charles K. Blandin Foundation. The development of a community based river monitoring and protection program completes the MHB's program of management and protection of the Mississippi Headwaters by the people and governments located on it.

I am pleased to report that through these efforts to update its management plan and to develop a management program of river water quality monitoring, the Mississippi Headwaters Board continues to serve as a model river protection program.

Sincerely,



Margaret Sherman,  
1990 Chairperson (Aitkin County)



## **HISTORY AND AUTHORITY OF THE MISSISSIPPI HEADWATERS BOARD**

The Mississippi Headwaters Board was organized in 1980 as an alternative to federal control of the first 400 miles of the Mississippi River. The counties of Clearwater, Hubbard, Beltrami, Cass, Itasca, Aitkin, Crow Wing and Morrison, entered into a joint powers agreement to preserve and protect the shorelands of the Mississippi River and seven Headwaters lakes in those counties. The counties adopted a shoreland zoning ordinance and land use and recreation management plans as the tools to protect the river's shorelands.

The MHB is composed of one county commissioner appointed from each of the eight member counties. The board is advised by a Citizens Advisory Committee of 24 members including two river property owners from each of the eight counties and eight at large members representing conservation groups, recreation industry, sportsmen's clubs, cultural interests, agriculture, wood products, utilities and tourism. The board is advised by a Technical Advisory Committee composed of zoning officers and land commissioners from the eight member counties and representatives of the Chippewa National Forest, county Soil and Water Conservation Districts, townships and Minnesota Department of Natural Resources.

## OTA LEGISLATURE

irements of Minnesota statutes, the status of its program and operations

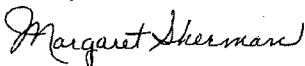
e of both reflection and growth for the

have conducted a thorough review of ordinance and corridor under the Board's documents have been recommended as a Mississippi Headwaters region, changes in the Mississippi Headwaters River Resources of zoning.

waters Board has launched the Mississippi program of river water quality monitoring of action, reported in its previous biennial water quality of the Mississippi River. supported by a \$472,000, five-year grant The development of a community based completes the MHB's program of ippi Headwaters by the people and

se efforts to update its management am of river water quality monitoring, the o serve as a model river protection program.

Sincerely,



Margaret Sherman,  
1990 Chairperson (Aitkin County)

## ORITY OF THE EADWATERS BOARD

organized in 1980 as an alternative to Mississippi River. The counties of a, Aitkin, Crow Wing and Morrison, preserve and protect the shorelands of s lakes in those counties. The counties d land use and recreation management relands.

ommissioner appointed from each of the sed by a Citizens Advisory Committee of owners from each of the eight counties onservaion groups, recreation industry, ulture, wood products, utilities and cal Advisory Committee composed of om the eight member counties and Forest, county Soil and Water nesota Department of Natural Resources.

# A

## COMPLISHMENTS OF THE MHB IN THE 1989-1991 BIENNIUM.

Administration of the Mississippi Headwaters Conservation Ordinance and Mississippi Headwaters Management Plan are the MHB's regulatory duties. The board reviewed 62 zoning actions between July 1989 and December 1990; of these, 35 were requests for variances from the standards of the Mississippi Headwaters Conservation Ordinance, of which seven were denied; 17 were requests for conditional use permits and four were amendments to the county zoning ordinance in Crow Wing County.

Administration of shoreland protection ordinance is a fundamental tool in river and other shoreland conservation. Achieving consistent enforcement and administration across eight counties has been a goal of the MHB. In 1989, the MHB published a training manual for administration of local land use regulations and held its first training workshop. More than 100 members of local boards of adjustment, planning commissions and other local decision-makers heard presentations on the legal and administrative requirements of shoreland zoning.

Review and update of the Mississippi Headwaters Management Plan and Conservation Ordinance has been an ongoing activity of the biennium. A task force composed of members of the MHB and its advisory committees researched changes in state law, impact of demographic changes in the region and effectiveness of current zoning administration. The result is a comprehensive package of changes for the ordinance, management plan and corridor under the board's jurisdiction.

The goal of these changes is to provide more efficient and consistent administration of regulations and to meet the MHB's objectives to preserve and protect the shorelands of the Mississippi River. This effort was supported by technical assistance from the National Park Service, U.S. Department of Interior, which compared the MHB's program of river protection to ten similar programs nationally.

The Mississippi Headwaters Board has completed an inventory of the outstanding resources of the river corridor. This includes cultural sites, protected waters, scientific and natural areas, threatened and endangered species and recreational sites. This information is being compiled into a data base.

Providing information and education to river property owners, rivers users, local government officials, state and federal officials and business with an interest in the river corridor has always been a significant portion of the MHB's operations. These activities provide important information to property owners about the impact of land use on water quality, through the publication of a User's Guide to Shoreland Development and a video program on lakes protection. These activities facilitate the exchange of information between governmental agencies and private citizens, such as impact of the 1988 drought, implementation of Local Water Planning, and development of applications of Geographic Information Systems at the county level.

In May 1990, the Charles K. Blandin Foundation awarded the Mississippi Headwaters Board a major grant for development of Mississippi Headwaters River Watch, a community river monitoring and protection program. This activity is complimentary to, but separate from, the MHB's regulatory authority. Mississippi Headwaters River Watch provides a comprehensive water quality monitoring plan, developed in association with state agencies and the highest standards of quality control, that is carried out at the community level. The twin goals of the program are to build understanding of the river's water quality and to build individual stewardship to a healthy river. Mississippi Headwaters River Watch is a means of understanding the importance of the Mississippi River and building commitment to its long-range protection.



*Jim & Delores Ekstrom  
received a Headwaters  
Heritage Award for their  
support of archaeological  
resources on the  
Mississippi River.*

## GOALS OF THE MHB FOR THE 1991-1993 BIENNIUM.

waters Conservation Ordinance and Mississippi  
B's regulatory duties. The board reviewed 62  
ember 1990; of these, 35 were requests for  
Mississippi Headwaters Conservation Ordinance, of  
sts for conditional use permits and four were  
nce in Crow Wing County.

Ordinance is a fundamental tool in river and  
consistent enforcement and administration across  
3. In 1989, the MHB published a training manual

tions and  
n 100  
Planning  
ers  
Administrative

Headwaters  
ance has

A task  
and its  
n state  
ie region  
istration.  
changes  
corridor

e more  
regulations  
erve and  
river. This  
ce from  
it of  
ram of  
ationally.

Completed an inventory of the outstanding  
des cultural sites, protected waters, scientific  
ered species and recreational sites. This  
base.

to river property owners, rivers users, local  
cials and business with an interest in the river  
tion of the MHB's operations. These activities  
7 owners about the impact of land use on water  
s Guide to Shoreland Development and a video  
ities facilitate the exchange of information  
ate citizens, such as impact of the 1988 drought,  
and development of applications of Geographic

Foundation awarded the Mississippi Headwaters  
Mississippi Headwaters River Watch, a  
on program. This activity is complimentary to,  
authority. Mississippi Headwaters River Watch  
monitoring plan, developed in association with  
of quality control, that is carried out at the  
program are to build understanding of the river's  
ardship to a healthy river. Mississippi  
nderstanding the importance of the Mississippi  
g-range protection.



*Jim & Delores Ekstrom  
received a Headwaters  
Heritage Award for their  
support of archaeological  
resources on the  
Mississippi River.*



## GOALS OF THE MHB FOR THE 1991-1993 BIENNIUM.

In the 1991-93 biennium, the Mississippi Headwaters Board will implement changes to its ordinance, management plan and corridor. This will require notice to river property owners, public hearings in the counties, production of an updated management plan and maps of the river corridor. Implementation of these changes is designed to coordinate with other natural resources regulatory activities in the region, including implementation of new state shoreland regulations and implementation of county comprehensive water management plans.

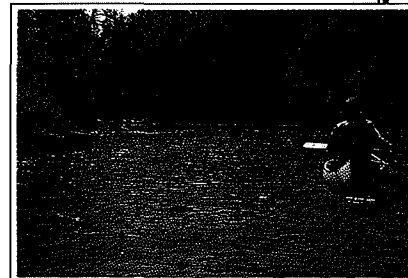
The MHB will continue development of its river resources data base, including a water quantity component. Specific applications for local land-use decision making, property owner and river user information and mapping services will be developed. The MHB expects to appoint a task force to oversee the development of new maps for the river corridor that take into account advances in Geographic Information System services.

River stewardship will be an obligation of the MHB as it completes its tenth year of operations. A major conference on the significance of the river to the region is planned. This conference will bring together humanities scholars, scientists and the Native American community to examine critically the values of river protection.

The Mississippi Headwaters Board is fulfilling its statutory obligation to protect the cultural values of the river corridor by convening a task force to examine issues of archaeological research and protection. A program of information and education for property owners and contractors on building in harmony with these sites is underway. The MHB has made a commitment to identify sites, in cooperation with the State Archaeologists Office, Indian Affairs Council and the Leech Lake Reservation Business Committee.

The natural and cultural history of the Mississippi Headwaters is the subject of a broadcast quality video program under production by the Mississippi Headwaters Board. This program will be completed in June 1991 and is already scheduled for broadcast in the Twin Cities metropolitan area. Two companion programs, exploring the geological foundation of the water resources of the Mississippi Headwaters and the archaeology of the region, are also in production. There will be supporting publications, including teacher's guides, with these programs.

The continued development of the Mississippi Headwaters River Watch will be a priority for the upcoming biennium. Regular sampling of chemical, physical and biological indicators of river water quality will begin in Spring 1991. Results will be reported to the U.S. Environmental Protection Agency via the Minnesota Pollution Control Agency. A training session will be held for students, teachers and volunteers in the spring and in the summer. The MHB will work with the Blandin Foundation and others to export this unique program of river protection downstream.



*The Mississippi Headwaters  
Board hosted the 1989  
Governor's Canoe Day.  
More than 250 people  
put in at Stump Lake,  
east of Bemidji, and  
paddled down river  
to Wolf Lake.  
A fish fry, musical  
performance and  
program of Native  
American drumming,  
singing and hoop dancing  
ended the day  
of river festivities.*

## MINNESOTA LEGISLATURE

requirements of Minnesota statutes, the status of its program and operations

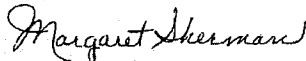
of both reflection and growth for the

has conducted a thorough review of an ordinance and corridor under the Board's documents have been recommended as a Mississippi Headwaters region, changes in the Mississippi Headwaters River Resources of zoning.

Headwaters Board has launched the Mississippi program of river water quality monitoring in action, reported in its previous biennial on water quality of the Mississippi River. supported by a \$472,000, five-year grant. The development of a community based completes the MHB's program of Mississippi Headwaters by the people and

efforts to update its management program of river water quality monitoring, the to serve as a model river protection program.

Sincerely,



Margaret Sherman,  
1990 Chairperson (Aitkin County)

## AUTHORITY OF THE MISSISSIPPI HEADWATERS BOARD

was organized in 1980 as an alternative to the Mississippi River. The counties of Itasca, Aitkin, Crow Wing and Morrison, preserve and protect the shorelands of the lakes in those counties. The counties and land use and recreation management shorelands.

commissioner appointed from each of the advised by a Citizens Advisory Committee of owners from each of the eight counties conservation groups, recreation industry, culture, wood products, utilities and Technical Advisory Committee composed of from the eight member counties and Forest, county Soil and Water Minnesota Department of Natural Resources.

# S

## STATEMENT OF REVENUES AND OPERATIONS

STATE OF MINNESOTA GRANT APPROPRIATED

\$201,107.00

### SUMMARY OF IN-KIND EXPENSES REPORTED BY MEMBER COUNTIES

COUNTY	GENERAL REVENUES	LAND AND PARKS	ROAD AND BRIDGES
AITKIN	3,257.88	20,552.73	
BELTRAMI	4,768.85	2,992.89	
CASS	24,480.77		
CLEARWATER	5,537.40	6,114.79	
CROW WING	454,383.11	371.75	92,556.75
HUBBARD	671.39		
ITASCA	1,572.98	670.09	
MORRISON	3,868.93	2,975.47	
<b>TOTALS</b>	<b>\$498,541.31</b>	<b>\$33,677.72</b>	<b>\$92,556.75</b>

**IN-KIND REPORTED THROUGH DECEMBER, 1990: \$624,775.78**

### SUMMARY OF 1989-91 OPERATIONS BY BUDGET FUND

SALARIES	\$86,091.85
PER DIEM	18,210.00
INSURANCE	20,594.92
PROFESSIONAL SERVICES	23,699.86
INFORMATION AND EDUCATION	31,358.02
MANAGEMENT PLAN PROGRAMS	21,152.35
<b>TOTAL OPERATIONS</b>	<b>\$201,107.00</b>



**MEMBERS OF THE**

**1990 MISSISSIPPI HEADWATERS BOARD**

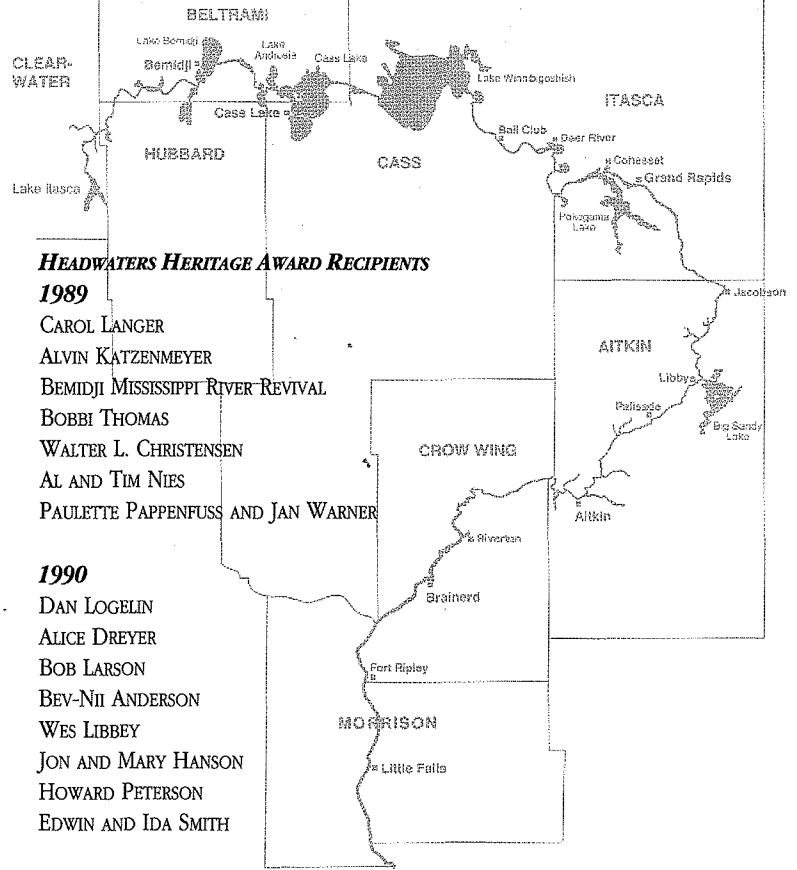
AITKIN COUNTY  
BELTRAMI COUNTY  
CASS COUNTY  
CLEARWATER COUNTY  
CROW WING COUNTY  
HUBBARD COUNTY  
ITASCA COUNTY  
MORRISON COUNTY

MARGARET SHERMAN, CHAIRPERSON  
JOHN LOFTUS, VICE-CHAIR (1991 CHAIRMAN)  
VIRGIL FOSTER  
GENE PETERSEN  
HOWARD PETERSON, 1989 CHAIRMAN (RETIRED)  
JEROME FULLER (RETIRED)  
ROBERT ROUFS, SECRETARY-TREASURER (RETIRED)  
WILLIAM BLOCK

**STAFF**

MOLLY MACGREGOR  
JILL SMITH  
LOYD NESSETH  
JOHN VALEN  
SANDRA HOLM

DIRECTOR  
SECRETARY  
CONSULTANT AND LOBBYIST  
ATTORNEY  
RIVER WATCH COORDINATOR



**HEADWATERS HERITAGE AWARD RECIPIENTS**

**1989**

CAROL LANGER  
ALVIN KATZENMEYER  
BEMIDJI MISSISSIPPI RIVER REVIVAL  
BOBBI THOMAS  
WALTER L. CHRISTENSEN  
AL AND TIM NIES  
PAULETTE PAPPENFUSS AND JAN WARNER

**1990**

DAN LOGELIN  
ALICE DREYER  
BOB LARSON  
BEV-NII ANDERSON  
WES LIBBEY  
JON AND MARY HANSON  
HOWARD PETERSON  
EDWIN AND IDA SMITH

**MISSISSIPPI HEADWATERS BOARD**

CASS COUNTY COURTHOUSE  
WALKER, MN 56484  
218 547-3300 (EXT.263)