

**2007**

# **Fire in Minnesota**

## **Fire Reporting System**



**MINNESOTA DEPARTMENT OF PUBLIC SAFETY**



**STATE FIRE MARSHAL DIVISION**  
**Jerry Rosendahl**  
**State Fire Marshal**



*(Back Cover)*

---

# TOTAL IMPACT



*Photo by Denise DeMars*



*These figures represent the collective incidents reported by 746 of Minnesota's 788 fire departments.*

*Ninety-five percent of the state's fire departments reported through the MFIRS program.*

## OVERALL STATE TOTALS

In 2007, 746 fire departments (95%) reported through the Minnesota Fire Incident Reporting System (MFIRS) which collects information on fire incidents and related activities. See the section titled "Participation," page 42, for a breakdown of reporting and non-reporting departments.

2007 REPORTED FIRE DEPARTMENT RESPONSES					
Incidents Reported	Seven County Metro Area	% State Total	Balance of State	% State Total	State Total
Structure Fires	3,961	54%	3,355	46%	7,316
Vehicle Fires	1,624	50%	1,609	50%	3,233
Other Fires	3,140	46%	3,659	54%	6,799
<b>TOTAL FIRES</b>	<b>8,725</b>	<b>50%</b>	<b>8,623</b>	<b>50%</b>	<b>17,348</b>
<b>RESCUE/EMS CALLS</b>	<b>81,163</b>	<b>69%</b>	<b>37,097</b>	<b>31%</b>	<b>118,260</b>
<b>FALSE CALLS</b>	<b>17,260</b>	<b>69%</b>	<b>7,589</b>	<b>31%</b>	<b>24,849</b>
<b>MUTUAL AID GIVEN</b>	<b>2,028</b>	<b>31%</b>	<b>4,419</b>	<b>69%</b>	<b>6,447</b>
<b>OTHER INCIDENTS</b>	<b>32,130</b>	<b>67%</b>	<b>15,921</b>	<b>33%</b>	<b>48,051</b>
<b>TOTAL CALLS</b>	<b>141,306</b>	<b>66%</b>	<b>73,649</b>	<b>34%</b>	<b>214,955</b>
<b>Estimated Dollar Loss Due to Fire</b>	<b>\$78,054,247</b>	<b>45%</b>	<b>\$94,951,723</b>	<b>55%</b>	<b>\$173,005,970</b>

The total number of fire incidents reported by participating Minnesota fire departments in 2007 was 17,348, which represents a slight decrease from 2006. The number of responses by the fire service increased 10% in 2007 to 214,955.

Total dollar loss decreased by \$9 million from 2006.

Total dollar loss decreased by \$9 million (5%) from 2006. The total number of fires decreased slightly, yet the number of structure fires increased by 5% and vehicles fires increased by 2%.

**FIVE-YEAR OVERALL INCIDENT COMPARISONS  
2003-2007**

	<u>2003</u>	<u>2004</u>	<u>2005</u>	<u>2006</u>	<u>2007</u>	<u>06/07 Change + (-)</u>	<u>06/07 % Change + (-)</u>
<b>FIRES</b>							
Structure	6,951	6,976	7,026	6,953	7,316	363	5%
Vehicle	3,785	3,512	3,404	3,173	3,233	60	2%
Other Fires	<u>9,702</u>	<u>6,741</u>	<u>5,871</u>	<u>7,323</u>	<u>6,799</u>	<u>(524)</u>	<u>(7%)</u>
<b>TOTAL FIRES</b>	<b>20,438</b>	<b>17,229</b>	<b>16,301</b>	<b>17,449</b>	<b>17,348</b>	<b>(101)</b>	<b>(1%)</b>
<b>OVERPRESSURERUPTURES</b>	<b>721</b>	<b>687</b>	<b>801</b>	<b>628</b>	<b>643</b>	<b>15</b>	<b>2%</b>
<b>RESCUE/EMS CALLS</b>	<b>95,098</b>	<b>99,646</b>	<b>104,509</b>	<b>106,785</b>	<b>118,260</b>	<b>11,475</b>	<b>11%</b>
<b>HAZARDOUS CONDITION CALLS</b>	<b>9,770</b>	<b>10,364</b>	<b>11,742</b>	<b>10,147</b>	<b>12,172</b>	<b>2,025</b>	<b>20%</b>
<b>SERVICE CALLS</b>	<b>9,464</b>	<b>11,923</b>	<b>12,362</b>	<b>11,850</b>	<b>12,565</b>	<b>715</b>	<b>6%</b>
<b>GOOD INTENT CALLS</b>	<b>14,002</b>	<b>14,481</b>	<b>16,770</b>	<b>16,977</b>	<b>19,653</b>	<b>2,676</b>	<b>16%</b>
<b>FALSE CALLS</b>							
Malicious	2,192	2,218	1,871	1,861	1,756	(105)	(6%)
Other False	<u>22,517</u>	<u>23,390</u>	<u>24,088</u>	<u>23,104</u>	<u>24,730</u>	<u>1,626</u>	<u>7%</u>
<b>TOTAL FALSE CALLS</b>	<b>24,709</b>	<b>25,608</b>	<b>25,959</b>	<b>24,965</b>	<b>26,486</b>	<b>1,521</b>	<b>6%</b>
<b>MUTUAL AID GIVEN</b>	<b>5,161</b>	<b>5,146</b>	<b>5,005</b>	<b>5,554</b>	<b>6,447</b>	<b>893</b>	<b>16%</b>
<b>ALL OTHER</b>	<b>843</b>	<b>918</b>	<b>1,591</b>	<b>885</b>	<b>1,381</b>	<b>496</b>	<b>56%</b>
<b>TOTAL CALLS</b>	<b>180,206</b>	<b>186,002</b>	<b>195,040</b>	<b>195,240</b>	<b>214,955</b>	<b>19,715</b>	<b>10%</b>
<b>TOTAL DOLLAR LOSS</b>	<b>\$154.4M</b>	<b>\$202.7M</b>	<b>\$160.2M</b>	<b>\$182.0M</b>	<b>\$173.0M</b>	<b>(\$9M)</b>	<b>(5%)</b>

For each of the last five years, residential structure fires have occurred at the rate of one for every 1,078 Minnesotans.

## STRUCTURE FIRES BY PROPERTY TYPE

Fires in structures continue to occur most frequently in residential property, including houses, apartments, boarding houses, dorms, hotels/motels, etc. In each of the last five years, an average of 5,053 fires have occurred in residential structures. These figures indicate that each year, one residential structure fire occurs for every 1,078 Minnesota residents.

	<u>2003</u>	<u>2004</u>	<u>2005</u>	<u>2006</u>	<u>2007</u>	<u>% Increase (Decrease) 2006-2007</u>
<b>Residential</b>	4,858	4,973	5,043	4,997	5,395	8%
<b>Educational/ Institutional</b>	216	202	195	180	214	19%
<b>Public Assembly/ Commercial</b>	433	443	512	405	389	(4%)
<b>Industrial/ Manufacturing</b>	261	257	256	286	246	(14%)
<b>Storage</b>	847	822	769	779	789	1%
<b>Special/Other</b>	234	199	167	226	221	(2%)
<b>Unclassified</b>	102	80	84	80	62	(23%)
<b>TOTAL</b>	<b>6,951</b>	<b>6,976</b>	<b>7,026</b>	<b>6,953</b>	<b>7,316</b>	<b>5%</b>

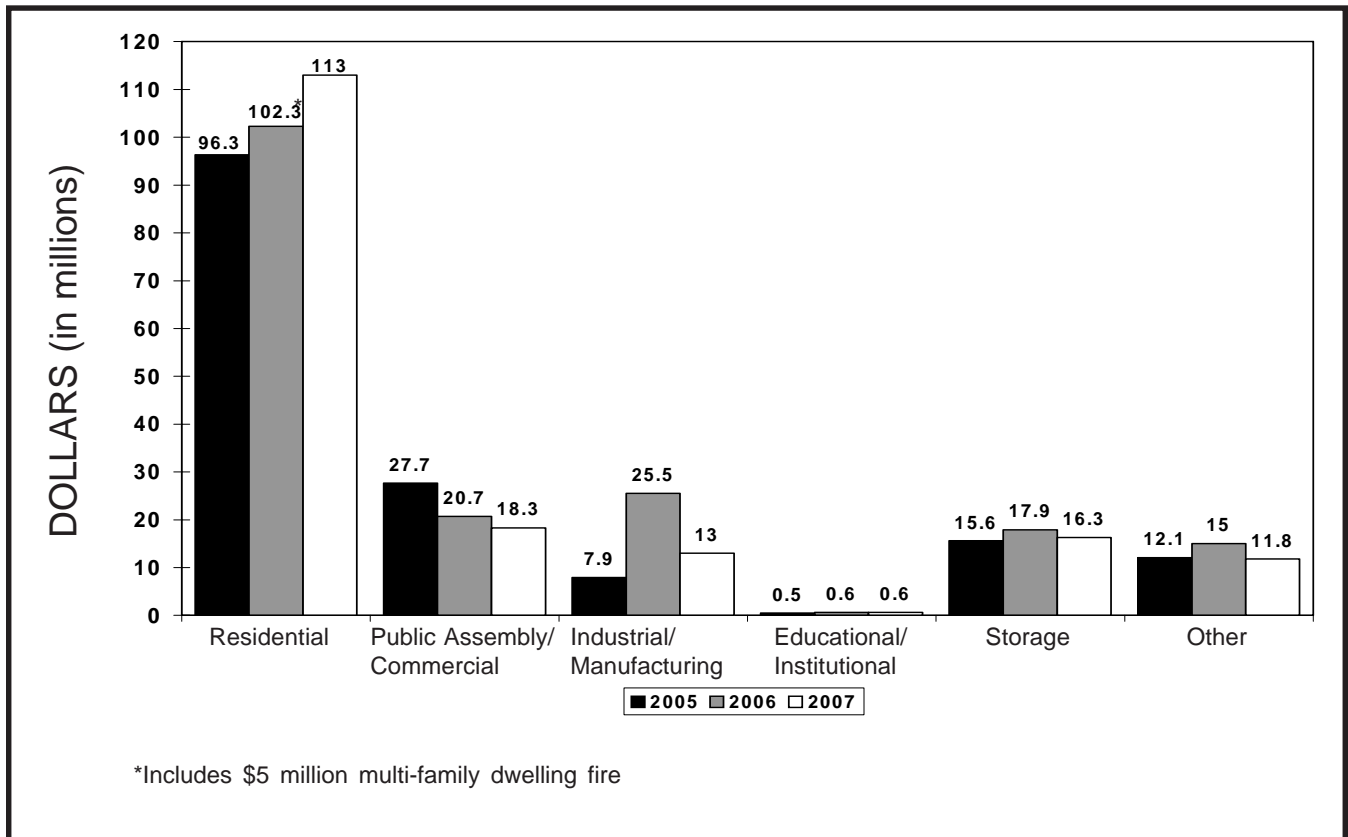
## 2007 RESIDENTIAL STRUCTURE FIRES

<u>Type of Residence</u>	<u>No. of Fires</u>	<u>Dollar Loss</u>	<u>Civilian Injuries</u>	<u>Civilian Deaths</u>
One-Two Family Dwelling	3,297	\$89,178,352	86	27
Multi-Family Dwelling	1,804	\$19,742,681	78	3
Hotel/Motel	44	\$421,550	0	0
Dormitory/Sorority/Fraternity	39	\$30,250	0	0
Residential Board & Care	34	\$8,968	0	0
Boarding/Rooming House	27	\$536,700	0	1
Residential, Other	132	\$1,294,495	4	0

OVERALL STATEWIDE DOLLAR LOSS

Average dollar loss per structure fire was over \$21,500.

DOLLAR LOSS BY PROPERTY TYPE



The 2007 dollar loss in residential property increased by more than \$10 million from 2006. Residential fires accounted for 74% of all structure fires and 71% of total dollar loss.

The average dollar loss per structure fire in 2007 was more than \$21,500 per incident. The average dollar loss per residential structure fire was nearly \$21,000 per incident.

Residential fires accounted for 71% of total dollar loss and represented 74% of all structure fires in 2007.



---

---

*In the past 19 years, residential dollar loss totalled more than **\$1.3 billion** dollars.*

---

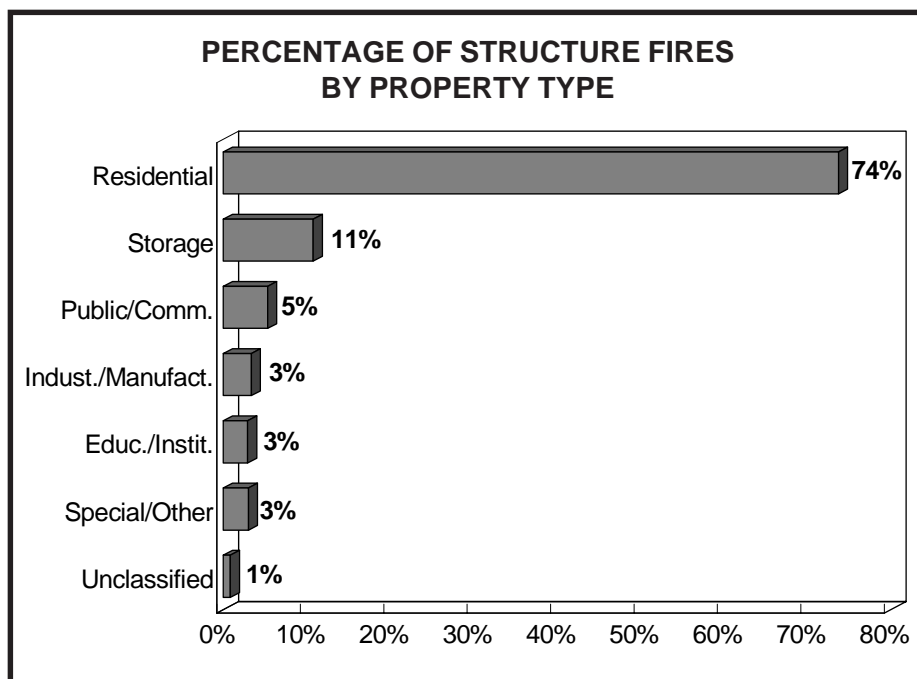
---

## SUMMARY

A decrease of 1% in MFIRS reporting by Minnesota fire departments brought the total number reporting to 746 (95%) of 788 departments. Also, the total number of fire incidents decreased slightly from 2006. Dollar loss was more than \$173 million, a \$9 million decrease from 2006.

Fires occurred most frequently in residential-type properties. Residential fires occurred in significantly higher percentages than the next most reported property type—storage facilities.

Residential fires accounted for 74% of all structure fires, 71% of total dollar loss, and 78% of all fire deaths. These statistics continue to identify the home as the most dangerous place to be.



In the last 19 years, more than **\$2.8 billion** in property was destroyed by fire. Forty-six percent, or more than **\$1.3 billion**, occurred in residential property.

---

---

*Seventy-eight percent of all fire deaths occurred in residential properties.*

---

---

Active participation by all citizens in public education and fire prevention is the only way to stop the loss of life and property from fire. A practical example of fire prevention efforts by civic groups and fire departments is implementation of programs to distribute and maintain smoke alarms among at-risk populations. Such efforts can result in saved lives and reduced property loss. Encouraging fire sprinkler installation in homes and public buildings is another way of helping people protect themselves from the dangers of fire. The fire service community has the responsibility to lead as well as respond.

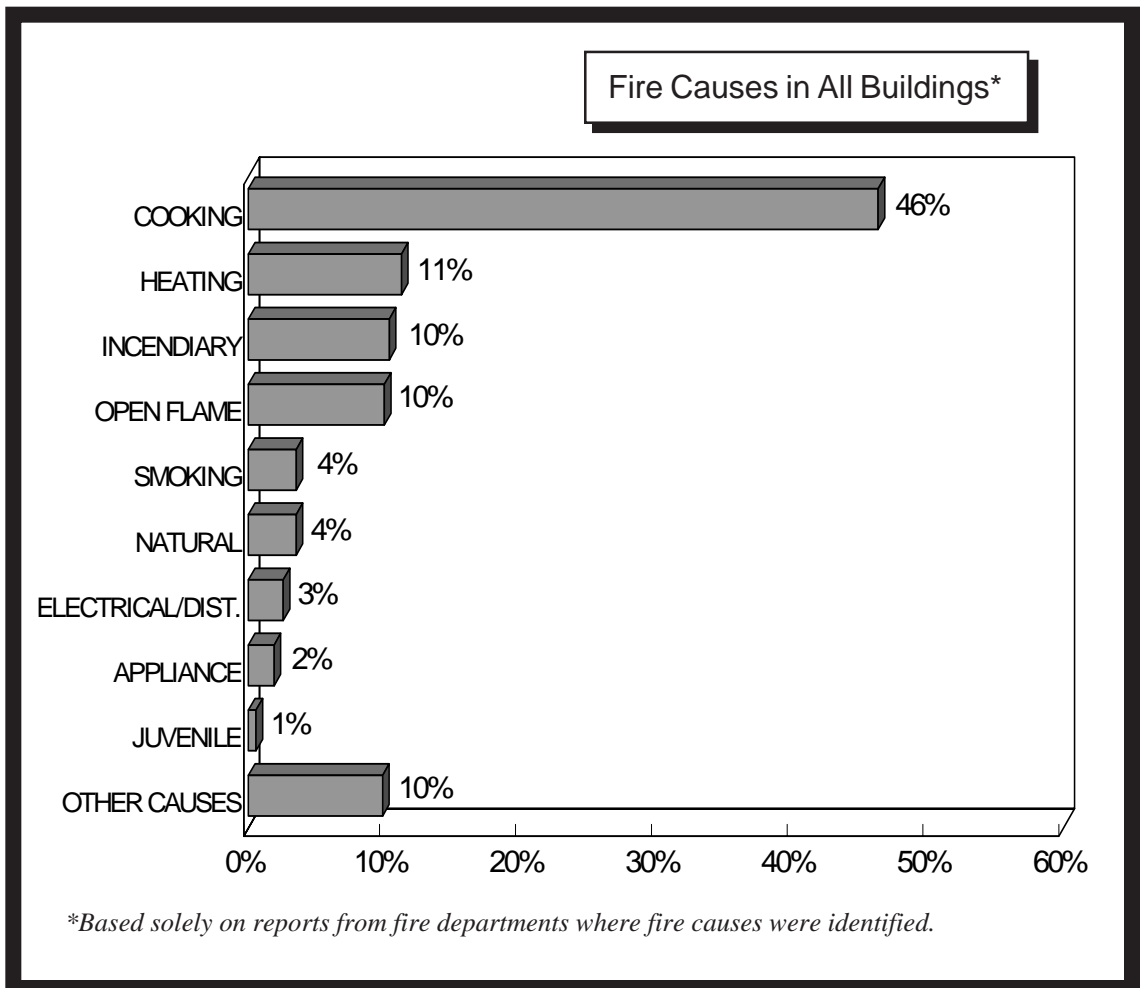


# CAUSES



## CAUSES

Cooking continues to be the leading cause of all structure fires with known causes. Heating was the second leading cause with incendiary and open flame tied for third.



When fire causes in all types of buildings are compared, cooking, heating, and incendiary/open flame emerge as the top three causes. Cooking remains the leading cause, mainly due to contained cooking fires. Open flame includes matches, candles, cigarette lighters, charcoal lighters and flares.

Fires in residential property represented 74% of all structure fires and 71% of the total dollar loss. Fifty-nine percent of incendiary fires occurred in residential properties, causing \$8.53 million in property loss.

A new statistical report of causes, developed by the National Fire Incident Reporting System (NFIRS), brought down the percentage of the "other causes" category, due to more complex evaluation of other fields in the report. However, complete, accurate reporting of all incidents is still necessary for these statistics to be useful in fire prevention.

Cooking was the cause in 38% of residential fires.

## A Closer Look at Major Fire Causes

---

---

*Contained cooking fires are fires involving the contents of a cooking vessel without fire extension beyond the vessel.*

---

---

### Cooking Fires

The leading cause of structure fires in 2007 was cooking. Ninety-six percent of those fires were contained cooking fires. The top four known factors in the remaining fires were: unattended equipment at 25%, combustibles too close at 6%, unspecified short circuit at 6% and equipment turned on accidentally at 6%. There was one cooking-related civilian fire death and there were 23 civilian injuries, as well as two firefighter injuries. Dollar loss from cooking fires for 2007 totalled \$1,578,672.

### Heating Fires

The majority of 2007 heating-related fires (481) occurred in residential properties. These fires increased by 17% from last year (410 fires in 2006), but dollar loss decreased by 4%.

HEATING FIRES IN RESIDENTIAL PROPERTIES ONLY

<u>Equipment</u>	<u>No. of Fire Incidents</u>	<u>% of Total</u>	<u>Dollar Loss</u>	<u>% of Total</u>
Fireplace/Chimney	299	62%	\$ 1,741,150	59%
Central Heating Units	84	17%	259,200	9%
Fixed Heating Units	70	15%	492,105	17%
Water Heaters	15	3%	250,000	8%
Portable Heaters	12	2%	228,700	8%
Other	1	<1%	200	<1%
<b>Total</b>	<b>481</b>	<b>100%</b>	<b>\$2,971,355</b>	<b>100%</b>

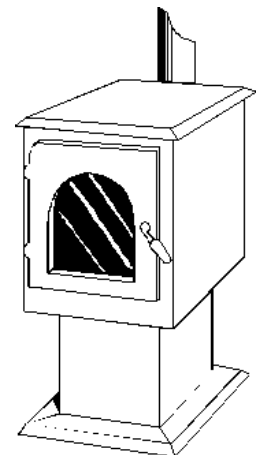
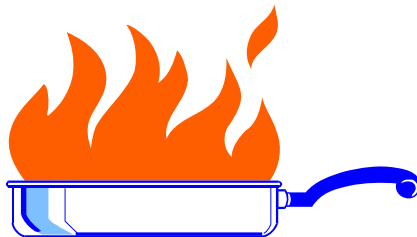
---

---

*Sixty-two percent of all heating fires in residential properties occurred in the chimney/fireplace area.*

---

---



## AGRICULTURAL PROPERTIES

*Total dollar loss in agricultural properties exceeded \$5 million.*

Agricultural properties are defined as those structures or open pieces of land on which the production of raw agricultural products and farming occurs. Agricultural production and storage properties do not include processing facilities. The NFIRS 5 reporting system has combined certain agricultural categories.

AGRICULTURAL PRODUCTION AND STORAGE		
<u>Type of Facility</u>	<u>No. of Incidents</u>	<u>Dollar Loss</u>
Livestock Production	73	\$2,229,960
Crop/Orchards	90	216,780
Grain Elevators/Silos	42	1,556,750
Livestock Storage	86	1,062,400
<b>TOTAL</b>	<b>291</b>	<b>\$5,065,890</b>



*One grain elevator fire resulted in a dollar loss of \$1.2 million.*

The total *reported* dollar loss for fires in agricultural properties exceeded \$5 million, which reflects an unrealistic decrease of 56%. **There were at least 15 facilities in these categories that had the entire structure burn down, but no dollar loss was entered in the report.** The total dollar loss for the year should be far higher than it appears and these high-dollar-loss fires need to be *reported* in order to accurately reflect the fire problem in agricultural properties.

---

# Areas of Origin by Occupancy Class

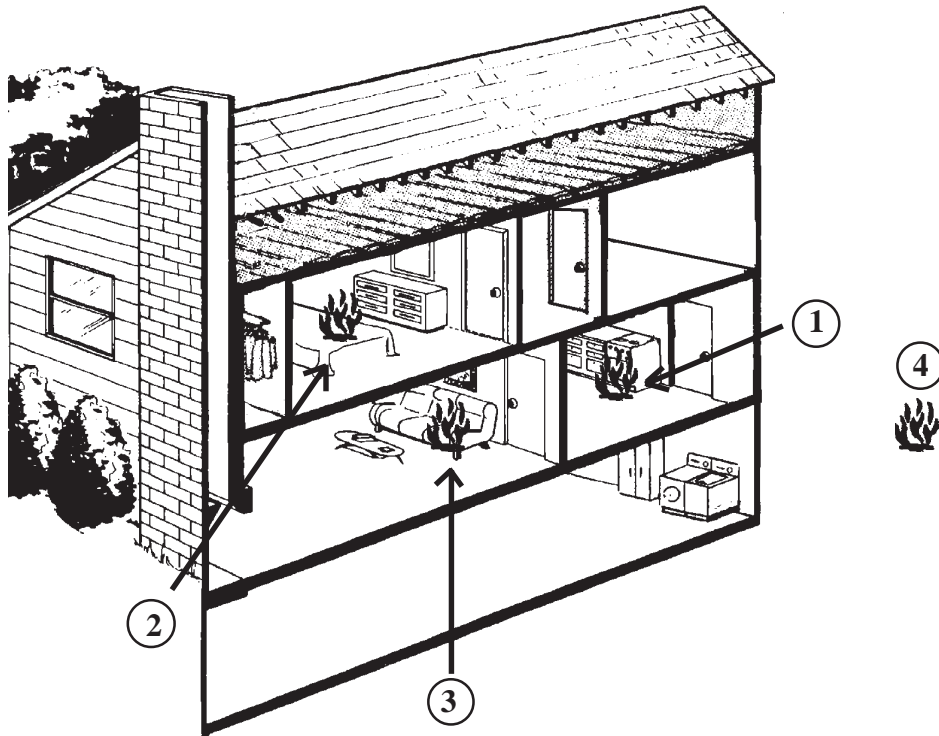
The following pages contain:

- Additional information on most common areas of fire origin
- Data on each type of structure (to the extent reported)
- Illustrations showing types of rooms in which most fires originated

Statistically, the kitchen was the most hazardous area in residential fires. Kitchen fires had a variety of causes.

# RESIDENTIAL PROPERTY

(Single Family Dwellings, Apartments, Hotels)



## AREA OF FIRE ORIGIN

- 1. Kitchen/Cooking Area ..... 45%
- 2. Sleeping Area ..... 5%
- 3. Living Room/Family Room ..... 3%
- 4. Garage/Carport..... 3%

Other Areas of Fire Origin ..... 44%

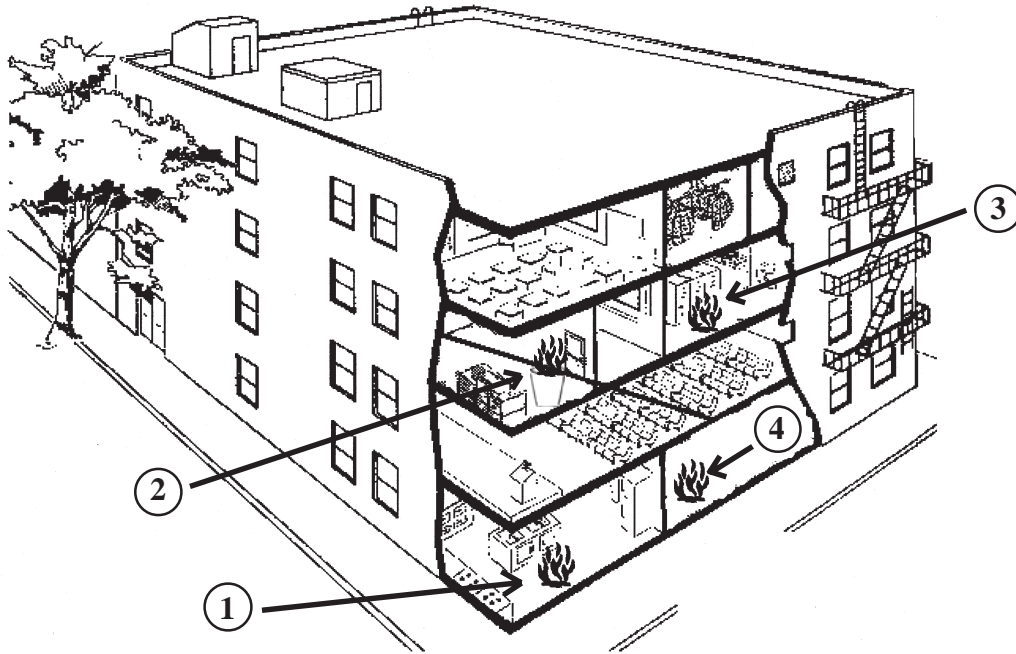
	No. of Incidents	Firefighter Injuries	Civilian Injuries	Firefighter Deaths	Civilian Deaths	Dollar Loss
	5,395	277	102	–	31	\$113,015,202
% of Total	74%*	62%	87%	–	78%	65%

\*Percent of structure fires



# EDUCATIONAL PROPERTY

(Colleges, Universities, Public/Private Schools)



## AREA OF FIRE ORIGIN

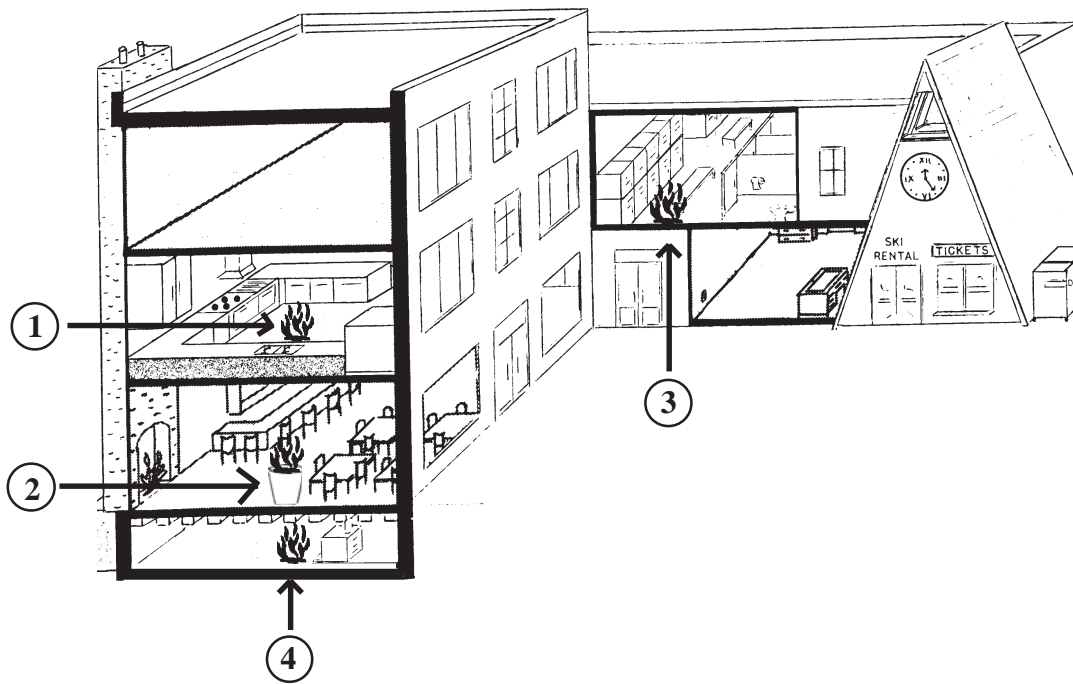
1. Kitchen/Cooking Area .....	36%
2. Trash Chute/Container .....	17%
3. Lavatory/Locker Room .....	5%
4. Laundry Room Area .....	5%
Other Areas of Fire Origin .....	37%

	No. of Incidents	Firefighter Injuries	Civilian Injuries	Firefighter Deaths	Civilian Deaths	Dollar Loss
	78	8	2	-	-	\$331,630
% of Total	1%*	2%	2%	-	-	<1%

\*Percent of structure fires

# PUBLIC ASSEMBLY PROPERTY

(Restaurants, Arenas, Churches, Theaters)



## AREA OF FIRE ORIGIN

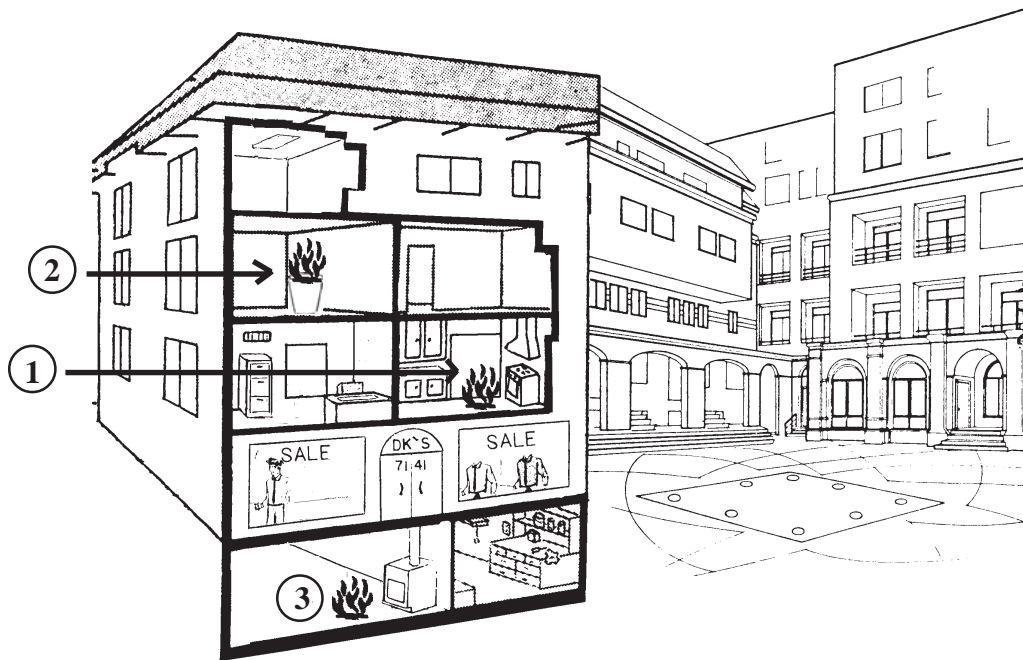
- 1. Kitchen/Cooking Area ..... 32%
- 2. Trash Chute/Container Area ..... 18%
- 3. Lavatory/Locker Room ..... 5%
- 4. Heating Room/Area ..... 4%
- Other Areas of Fire Origin ..... 41%

	No. of Incidents	Firefighter Injuries	Civilian Injuries	Firefighter Deaths	Civilian Deaths	Dollar Loss
	196	13	1	-	-	\$3,749,540
% of Total	3%*	3%	1%	-	-	2%

\*Percent of structure fires

# STORE AND OFFICE PROPERTY

*(Retail Shopping, Business Offices, Service Stations)*



### AREA OF FIRE ORIGIN

- 1. Kitchen/Cooking Area ..... 18%
- 2. Trash Chute/Container ..... 5%
- 3. Heating Room/Area ..... 5%

Other Areas of Fire Origin ..... 72%

	No. of Incidents	Firefighter Injuries	Civilian Injuries	Firefighter Deaths	Civilian Deaths	Dollar Loss
	193	21	2	-	-	\$14,549,674
% of Total	3%*	5%	2%	-	-	8%

\*Percent of structure fires

## FIRE PREVENTION WEEK

*Since 1925, the week containing October 9 has been designated Fire Prevention Week in the United States, in memory of the Great Chicago Fire on October 9, 1871.*

The official sponsor of Fire Prevention Week since its inception has been the National Fire Protection Association (NFPA). Each year, NFPA develops a theme for the week and makes materials available to fire departments all over the nation to assist in getting the fire safety message to the public. The theme for 2007 was **“Practice Your Escape Plan!”** NFPA’s goal for 2007 was to remind and encourage families all over the nation to develop and practice ways to escape their dwellings in case of fire. Just 23% of Americans actually formulate and physically practice plans for utilizing two ways out of every room and proceeding to a designated meeting place outside the home. Repetitive practice is still the key to internalizing fire-safe behaviors in any age group.

The State Fire Marshal encourages fire service personnel to lead fire prevention efforts in their own communities. Further information about this annual event can be found on the NFPA web site at [www.nfpa.org](http://www.nfpa.org).

## SUMMARY

In the year 2007, cooking fires caused the largest percentage of structure fires (46%), with heating and incendiary/open flame as the second and third leading causes. The most likely reason for the increase in cooking fires is a new reporting category which more accurately captures this information.

Cooking, heating and incendiary/open flame together accounted for 77% of total structure fires. Fires in residential spaces represent 74% of all structure fires and 78% of fire deaths. Eighty-seven percent of civilian injuries occurred in residential fires.

**While careless smoking accounts for only 4% of structure fires, it nevertheless caused 20% of all fire fatalities and 26% of residential fire deaths.**

In 2007, MFIRS data reported 10% of all structure fire causes as “unknown/other causes.” Fire departments are strongly encouraged to provide the maximum available information on their MFIRS reports. Lack of information increases the number of incidents with “unknown/other” listed as cause. In order to focus our fire prevention efforts where the greatest need exists, complete reporting of causes/ignition factors in the MFIRS program is absolutely essential. Accurate data cannot be extrapolated from fields left blank on computer or paper forms.

Minnesotans continue to be in the greatest danger from fire in their own homes. Fire prevention efforts in the areas of cooking and heating must continue to be a top priority for the fire service community.

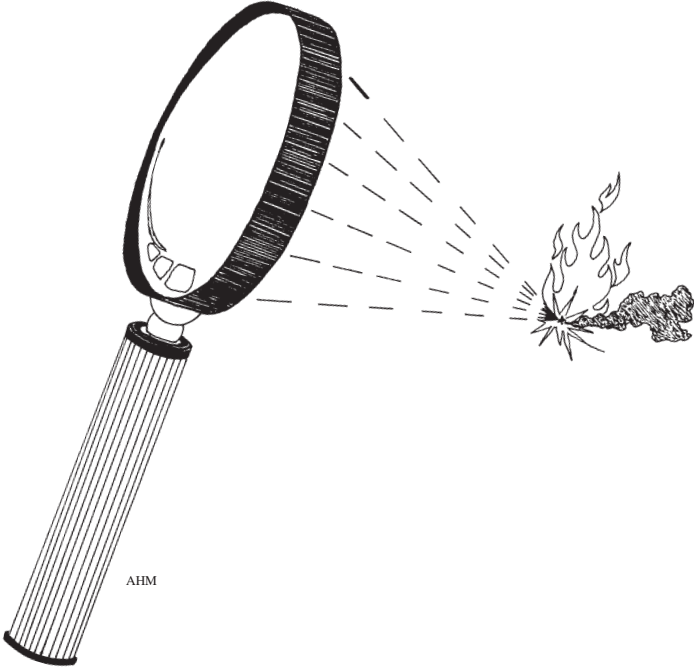
---

*In order to focus our fire prevention efforts where the greatest need exists, complete reporting of causes/ignition factors in the MFIRS program is absolutely essential.*

---

---

# INCENDIARY TRENDS

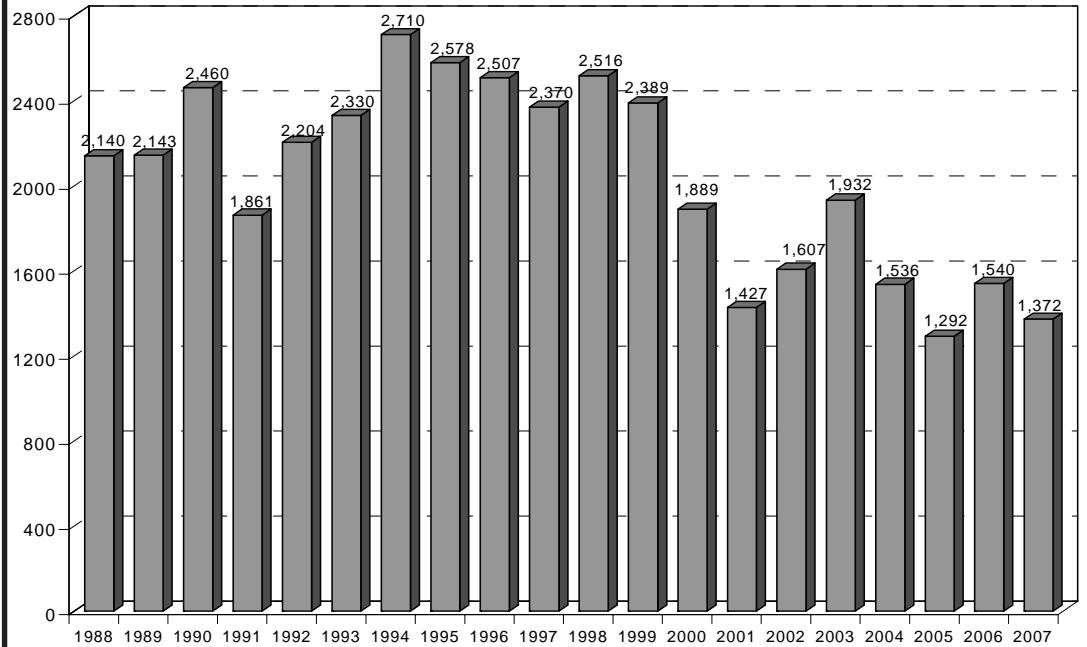


*Photo by Casey Stotts*

## INCENDIARY TRENDS

In 2007, the number of identified incendiary fires decreased by 11%.

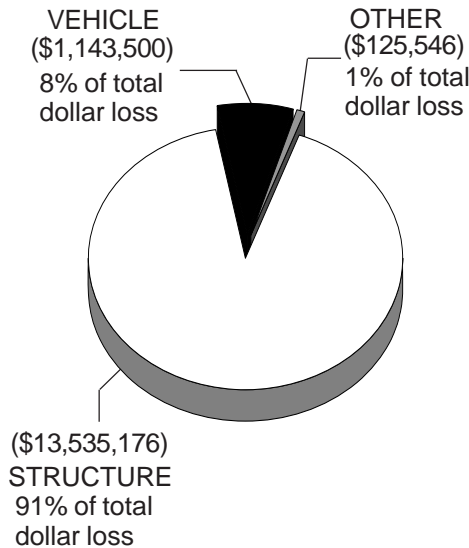
### INCENDIARY FIRES IN MINNESOTA



There was a total of 1,372 identified incendiary fires, a 11% decrease from 2006. The value of property destroyed was estimated at nearly \$15 million, which is a 2% increase from last year. Yet, both statistics are lower than the numbers in the 1990's. Incendiary is listed in the top three causes of known structure fires in 2007.

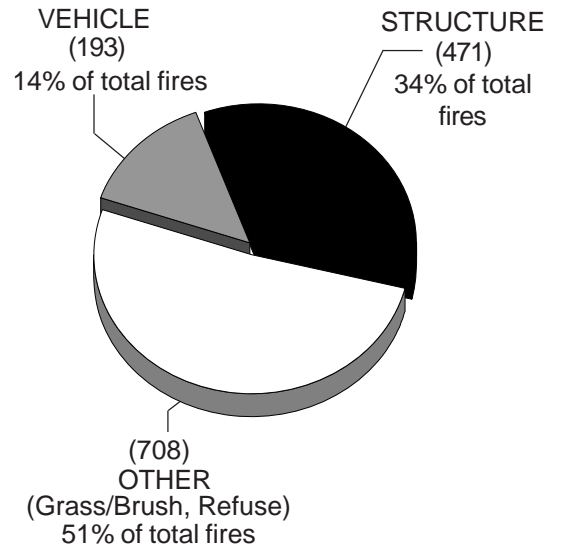
### INCENDIARY FIRES BY DOLLAR LOSS AND TYPE

#### DOLLAR LOSS

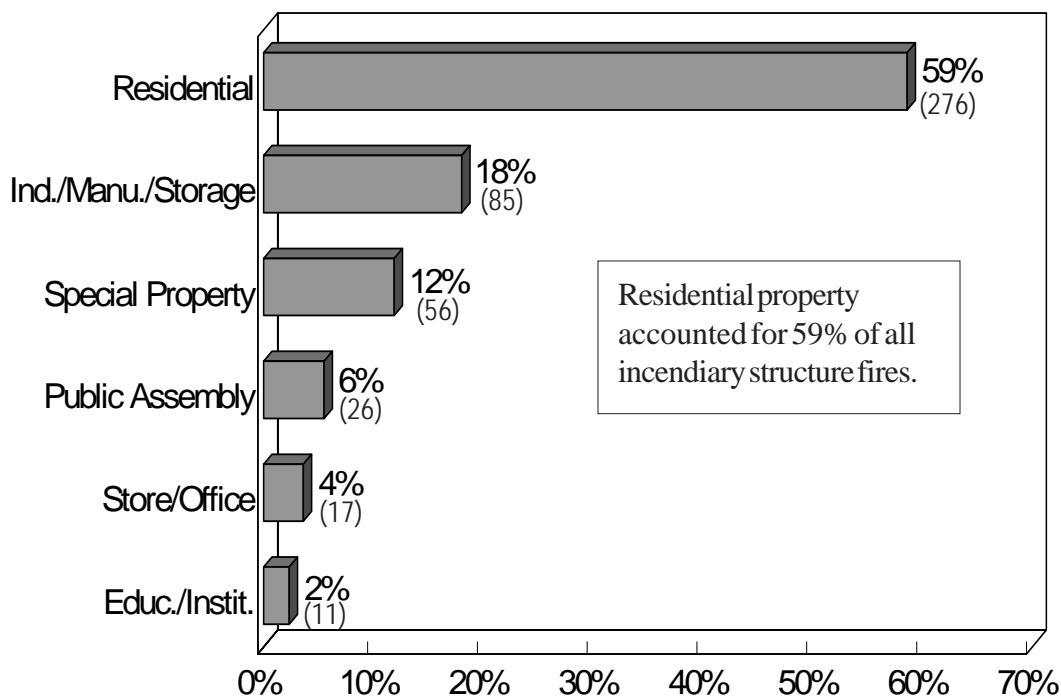


Inciendary dollar loss increased by 2% from 2006.

#### TYPE OF FIRES



## Incendiary Fire Incidents By Structure Type

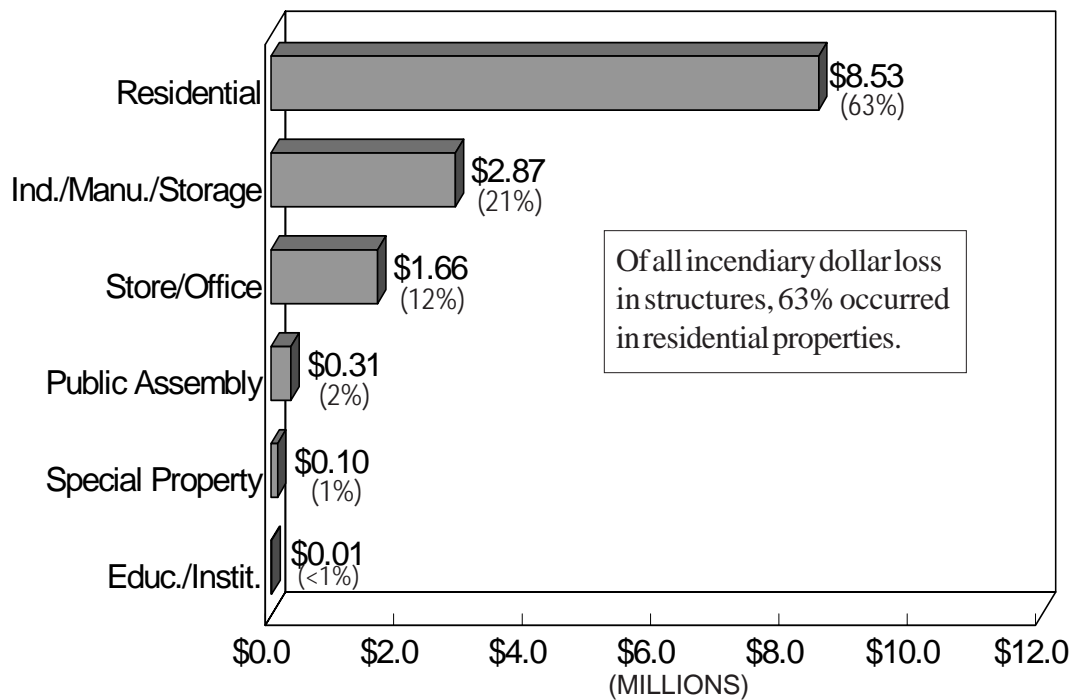


More than half of all incendiary fires reported in 2007 (59%) occurred in residential properties. Dollar loss in those properties totalled more than \$8.5 million, or 63% of total incendiary dollar loss in structures.

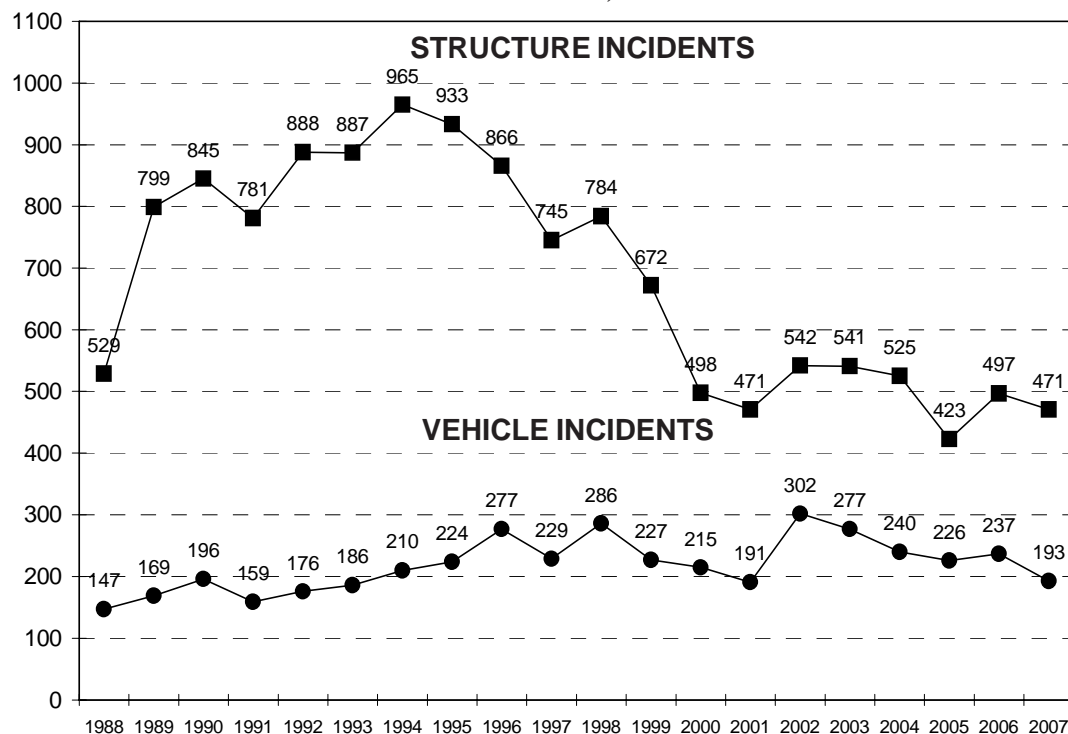
### Incendiary Fire Dollar Loss (In Millions)

	Structure	Vehicle
1992	\$16.3	\$.5
1993	\$20.6	\$.8
1994	\$42.2	\$.8
1995	\$16.9	\$.9
1996	\$20.5	\$1.3
1997	\$13.8	\$.9
1998	\$11.1	\$1.3
1999	\$15.3	\$1.3
2000	\$8.1	\$1.1
2001	\$8.1	\$1.1
2002	\$12.9	\$1.4
2003	\$8.5	\$1.2
2004	\$10.2	\$1.0
2005	\$8.7	\$.8
2006	\$13.4	\$1.0
2007	\$13.5	\$1.1

## Incendiary Fire Dollar Loss By Structure Type



### INCENDIARY TREND IN STRUCTURE AND VEHICLE FIRES, 1988-2007



In 2007, incendiary was listed as the cause of 10% of all reported structure fires with known causes and 6% of all reported vehicle fires in Minnesota. Vehicle incendiary dollar loss represented 10% of total vehicle fire dollar loss, with an average dollar loss per incendiary vehicle fire of \$5,925. Fire investigators agree that incendiary vehicle fires are under-reported and may not receive as much attention as structure fires receive.

#### RESIDENTIAL STRUCTURE INCENDIARY FIRES

Property Type	2006		2007		% of Total Dollar Loss
	Incidents	Dollar Loss	Incidents	Dollar Loss	
One or Two Family Dwelling	228	\$8.5M	190	\$7.4M	87%
Apartment/Tenement/Flat	56	\$.66M	69	\$1.0M	12%
Hotel/Motel/Inn/Lodge	3	\$.008M	4	\$.004M	<1%
Dormitory	3	<\$.001M	0	\$0M	0%
Boarding/Rooming House	0	\$0M	1	\$.013M	<1%
Other Residential Occupancy	9	\$.41M	12	\$.051M	1%
<b>TOTAL</b>	<b>299</b>	<b>\$9.6M</b>	<b>276</b>	<b>\$8.5M</b>	<b>100%</b>

Residential structures are at greatest risk from fire. These same structures are also at greatest risk from incendiary fires. The 276 residential incendiary incidents reported in 2007 accounted for 5% of all reported residential fires and 8% of the dollar loss for this property type.



## INCENDIARY FIRE INCIDENTS AND DOLLAR LOSS BY COUNTY\*

In some instances, the protection district of the reporting fire department goes beyond its county boundary, but the incident is recorded within the department's home county. Per capita data is calculated at a rate of incendiary fires per 100,000 people.

<u>County</u>	<u>Incendiary Incidents</u>	<u>Incend. Fires/ 100,000 Pop.</u>	<u>Incendiary Dollar Loss</u>	<u>County</u>	<u>Incendiary Incidents</u>	<u>Incend. Fires/ 100,000 Pop.</u>	<u>Incendiary Dollar Loss</u>
Aitkin	3	20	\$25,000	Marshall	6	59	\$0
Anoka	62	21	\$619,250	Martin	2	9	\$1,800
Becker	22	73	\$2,000	Meeker	5	22	\$0
Beltrami	9	23	\$0	Mille Lacs	7	31	\$35,600
Benton	16	47	\$75,200	Morrison	12	38	\$179,000
Big Stone	0	0	\$0	Mower	3	8	\$15,000
Blue Earth	20	36	\$325,900	Murray	0	0	\$0
Brown	3	11	\$0	Nicollet	11	37	\$500
Carlton	7	22	\$85,000	Nobles	1	5	\$3,000
Carver	18	26	\$10,500	Norman	2	27	\$115,000
Cass	27	99	\$0	Olmsted	32	26	\$331,501
Chippewa	0	0	\$0	Otter Tail	12	21	\$200
Chisago	8	19	\$0	Pennington	8	59	\$8,000
Clay	8	16	\$142,100	Pine	8	30	\$340,010
Clearwater	3	36	\$0	Pipestone	3	30	\$60,000
Cook	0	0	\$0	Polk	17	54	\$458,500
Cottonwood	1	8	\$100,000	Pope	0	0	\$0
Crow Wing	6	11	\$12,000	Ramsey	249	49	\$2,515,961
Dakota	37	10	\$187,320	Red Lake	0	0	\$0
Dodge	8	45	\$0	Redwood	3	18	\$200,000
Douglas	18	55	\$67,000	Renville	4	23	\$0
Faribault	1	6	\$5,000	Rice	21	37	\$16,000
Fillmore	4	19	\$70,000	Rock	1	10	\$100,000
Freeborn	5	15	\$0	Roseau	0	0	\$0
Goodhue	10	23	\$0	St. Louis	115	57	\$427,635
Grant	1	16	\$0	Scott	20	22	\$9,500
Hennepin	322	29	\$5,361,845	Sherburne	25	39	\$300,000
Houston	0	0	\$0	Sibley	3	20	\$0
Hubbard	4	22	\$0	Stearns	17	13	\$2,004,000
Isanti	3	10	\$26,400	Steele	3	9	\$0
Itasca	14	32	\$23,000	Stevens	0	0	\$0
Jackson	3	27	\$25,000	Swift	1	8	\$0
Kanabec	3	20	\$0	Todd	4	16	\$13,000
Kandiyohi	6	15	\$130,000	Traverse	0	0	\$0
Kittson	2	38	\$30,000	Wabasha	3	14	\$0
Koochiching	4	28	\$6,000	Wadena	0	0	\$0
Lac Qui Parle	0	0	\$0	Waseca	8	41	\$3,550
Lake	1	9	\$0	Washington	38	19	\$33,250
Lake of the Woods	0	0	\$0	Watsonwan	4	34	\$700
LeSueur	2	8	\$95,000	Wilkin	3	42	\$0
Lincoln	0	0	\$0	Winona	6	12	\$0
Lyon	8	31	\$0	Wright	31	34	\$165,000
McLeod	12	34	\$42,000	Yellow Medicine	2	18	\$0
Mahnomen	1	19	\$2,000	<b>TOTAL</b>	<b>1,372</b>	<b>28</b>	<b>\$14,804,222</b>

\* Based on data received from 746 departments. See pages 43-50 for MFIRS participation by county.

## **SUMMARY**

Incendiary fires decreased in 2007, yet dollar loss from those fires increased slightly. Incendiary fires were the cause of 10% of structure fires with known causes.

Fifty-nine percent of all incendiary structure fires were in residential property as well as 63% of all incendiary dollar loss.

In the past seventeen years, incendiary fires caused 50 deaths and more than \$303 million in property loss. Incendiary fires must be addressed through such efforts as the Arson Reward Program, the Arson Suspect Pointer System, and the Juvenile Firesetter Intervention programs being established throughout the state. Arson is a crime against every Minnesotan.

---

# CASUALTIES



*Photo by Denise DeMars*

## REMEMBERING HAM LAKE - 2007

**The  
difference  
between  
this:**



**And  
this:**



**Might  
be this:**



May, 2007, brought Minnesota the largest, most costly wildland fire the state has seen since the Hinckley-to-Duluth fire in 1918. The fire appears to have started on May 5 from a campfire on Ham Lake, and fed on the debris from the 1999 wind storm that dropped trees in a 477,000 acre area. The resulting forest fire headed north along the west side of the Gunflint Trail and into Canada, then east, then south on the east side of the Gunflint Trail.

By the time the fire was extinguished by rain on May 19, 76,000 acres and 163 buildings were burned. Of the 76,000 acres burned, 35,000 acres were in Minnesota—20,000 acres were in the Boundary Waters Canoe Area. Structure dollar loss was \$10,135,650; suppression costs were about \$13,000,000. Nearly 1,100 people were involved in extinguishment in both the U.S. and Canada, including Type 1 Management Teams in both countries, the Minnesota DNR, USFS, more than thirty fire departments, private contractors, Cook County Sheriff's Office, numerous other law enforcement agencies, BIA, U.S. Fish and Wildlife, Canadian Ministry of Natural Resources and many supporting state, federal, and county agencies.

Although this was a very expensive fire for Minnesota, compared to other large forest fires, this fire had a low cost per acre. Cost efficiencies were achieved through use of local businesses, fire department resources and a thorough analysis of resources needed. Huge achievements were made through preplanning, education of landowners and FireWise® measures enacted prior to the fire. Best of all, there was no loss of life; only 11 minor injuries to firefighters were reported.

While \$10 million and 163 buildings were lost, more than 700 structures with a value of \$35 million were not burned. Several factors must be acknowledged in saving these structures:

- Use of exterior sprinkler systems powered by propane gas. Installation of these systems began after the 1999 storm left a blowdown area full of dry fuel. These sprinklers, engaged and functioning properly before the immediate approach of the fire, can increase humidity, lower the temperature of the nearby area and soak potential fuel. One sprinkler vendor estimated that 125 structures had been saved by use of its product.
- Implementation of the FireWise® program, which promoted the establishment of “defensible spaces” around structures. Many homes without sprinkler protection survived because defensible spaces had been maintained.
- The burnout of a buffer zone by fire officials was key to preventing the fire from being pushed southeastward by high winds and overrunning populated areas on Gunflint Lake.

Among positive lessons learned, we must rejoice in knowing that proactive planning, such as that offered by the FireWise® program, can indeed make a difference; aggressive development of outdoor sprinkler technology can make a difference; the ability of many agencies to work together toward a common goal makes a huge difference—and the tireless labor and courage of the fire service makes the greatest difference of all.

*From information compiled by Glen Bergstrand, Fire Safety Supervisor  
Photos by Tom Linhoff, Health Care Facility Inspector  
Minnesota State Fire Marshal Division*

## FIRE DEATHS AND SMOKE ALARM PERFORMANCE\*

*In 26% of fatalities in residential occupancies, smoke alarms were improperly maintained or absent.*

In 2007, 40 civilians lost their lives in Minnesota fires. The total number of deaths is 13% fewer than in 2006, when 46 people died in fires; residential deaths decreased by 16%. Residential fire deaths represented 78% of 2007 fire fatalities. In 26% of the casualties in residential structures, smoke alarms (required in every dwelling since 1993) were absent or non-operating. In another 39% of the dwelling cases, it was not possible to determine whether a smoke detector was present or operating.

### FIRE DEATHS IN RESIDENTIAL DWELLINGS

	<u>Fatalities</u>	<u>% of Dwell. Fires</u>	<u>% of Total Deaths</u>
No Smoke Alarms Present	7	23%	18%
Inoperable Smoke Alarms Present	1	3%	2%
Working Smoke Alarms Present	5	16%	13%
Unk. if Alarms Present/Working	12	39%	30%
Not a Factor/Suicides, Explosions, etc.	6	19%	15%
<b>Total Deaths in Dwellings</b>	<b>31</b>	<b>100%</b>	<b>78%</b>
Other Fire Deaths (Including vehicles, outdoors, other structures, etc.)	9	--	22%
<b>Total Fire Deaths</b>	<b>40</b>	<b>--</b>	<b>100%</b>

### FIVE FATALITIES WITH WORKING SMOKE ALARMS PRESENT: WHAT HAPPENED?

	<u>Fatalities</u>
Careless Smoking	2
Child Fire Play	2 (Same Incident)
Unattended Candle	1

*Since August 1, 1993, smoke alarms have been required in every dwelling in Minnesota that has a sleeping area.*

\*All charts and information on this page have been taken from the State Fire Marshal Division's 2007 fire death database, which is based on fire death investigations done by this office and on MFIRS data.

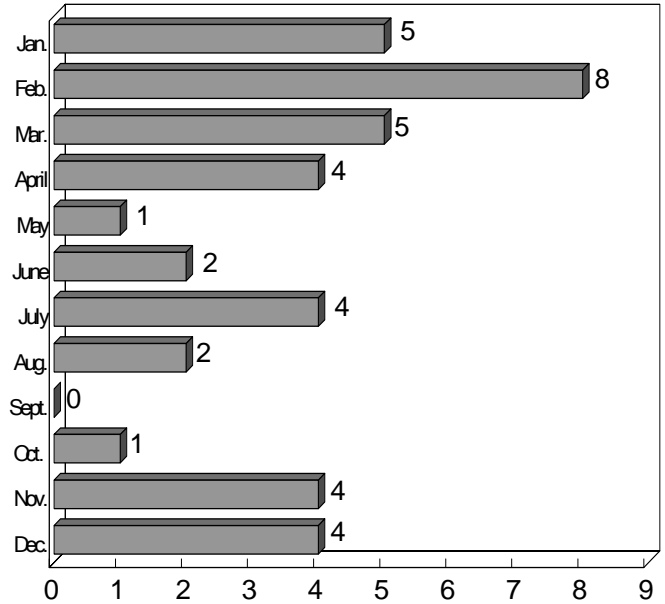
## CIVILIAN FIRE DEATHS: WHO AND WHEN

Seventy percent of fire deaths in 2007 occurred between the hours of midnight and 12 noon. Fifty-three percent of the fire deaths occurred during the winter months (Nov.-Feb.)

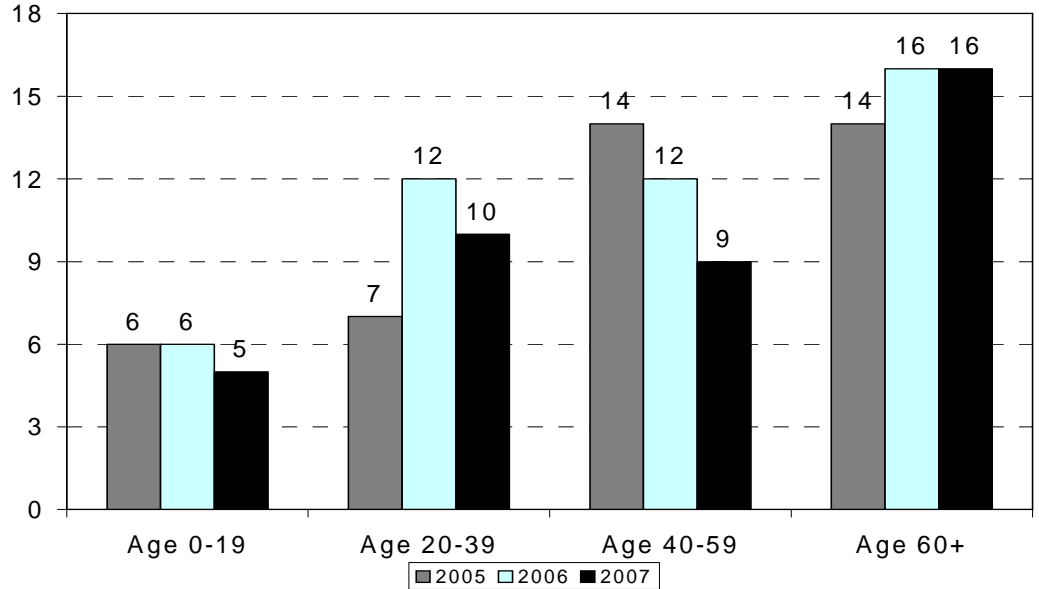
**FIRE DEATHS BY TIME OF DAY**

	TOTAL	0000-0600	0600-1200	1200-1800	1800-2400
Careless Smoking	8	3	2	2	1
Arson/Suicide	7	5	1	1	0
LP Gas/Pipeline Explos.	3	0	1	2	0
Collision	3	1	1	1	0
Open Careless Burning	2	1	0	1	0
Electrical Malf./Overload	2	0	1	1	0
Combust. Too Close	2	1	0	1	0
Child Play	2	0	2	0	0
Other	3	1	2	0	0
Undetermined	8	4	2	2	0
<b>Total</b>	<b>40</b>	<b>16</b>	<b>12</b>	<b>11</b>	<b>1</b>

**FIRE DEATHS BY MONTH**



**FIRE DEATHS BY AGE**



*In 2007, all age groups except the elderly (60+) showed a decrease in the number of fire deaths.*

In 2007, total fire deaths were down by 13% from 2006. Deaths in the 0-19 age group decreased by 17%. The death rate in the 20-39 age group also dropped by 17% from 2006; however, this figure is still 43% higher than the 2005 number for this age group. The 40-59 age category had a 25% decrease in fatalities in 2007; combined with the 14% decrease between 2005 and 2006, this age group shows a substantial reduction in fire deaths for the past two years. Deaths in the 60+ range remained the same at 16 fatalities. **These elderly citizens account for 40% of the total fire deaths in 2007.**

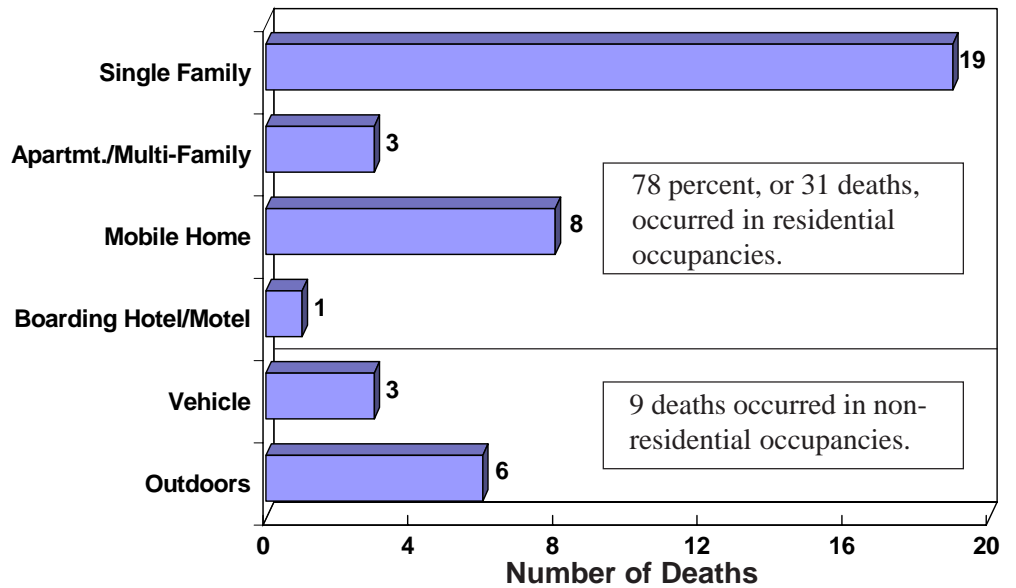
## CIVILIAN FIRE DEATHS: WHERE AND WHY

Seventy-eight percent of fire deaths occurred on residential property.

Careless smoking was identified as the cause of 20% of all fire deaths. Fifty percent of those careless smoking deaths were alcohol or drug-related.

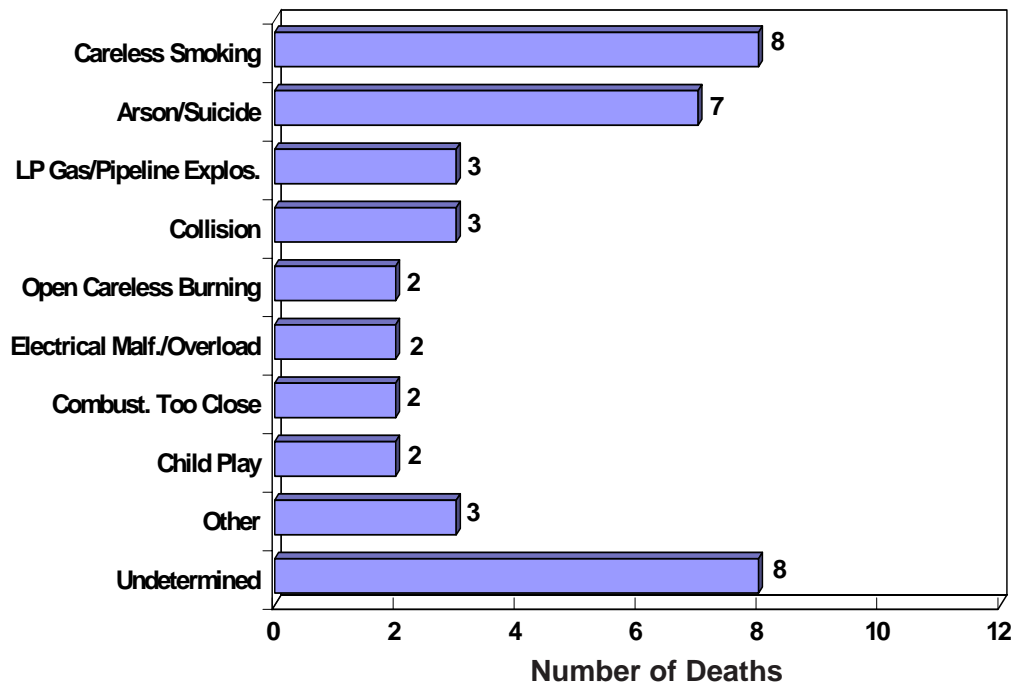
Alcohol/drug use was a factor in 15% of all fire deaths.

### Civilian Deaths By Location



Seventy-eight percent of 2007 fire deaths occurred where people generally feel safest—at home. This percentage decreased 3% from last year.

### Civilian Deaths By Cause



In 2007, careless smoking was again the leading cause of fatal fires. While this number is the same as in 2006, it represents a larger percentage of total 2007 fire deaths (20%). Adding to the tragedy, alcohol or drug use was a factor in 50% of the careless smoking deaths, and in 15% of all fire deaths.

## 2007 FIRE DEATH LISTING

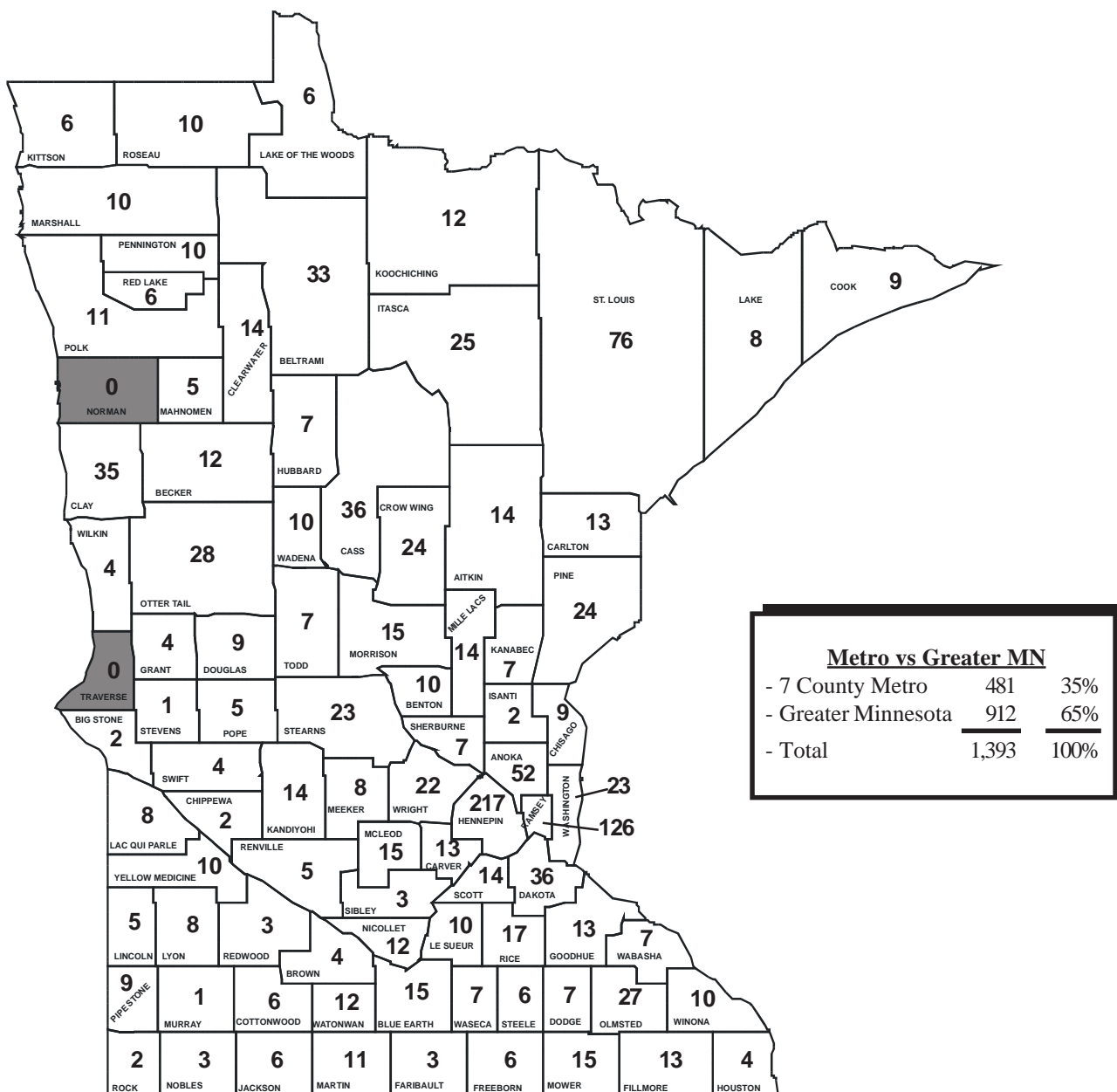
<u>Date</u>	<u>City/Town</u>	<u>Structure</u>	<u>Cause</u>	<u>Age</u>
1/4/2007	St. Paul	Single Family	Undetermined	79
1/12/2007	New Prague	Single Family	Careless Smoking	61
1/15/2007	Zumbrota	Highway	Vehicle Collision	14
1/17/2007	Spring Valley	Apartment	Unattended Candle	54
1/27/2007	Oakdale	Single Family	Unattended Heater	54
2/1/2007	St. Peter	Single Family	Undetermined	84
2/5/2007	Bemidji	Single Family	Combustible Material Too Close	35
2/6/2007	Red Wing	Single Family	Electrical Malfunction	90
2/10/2007	St. Paul	Single Family	Unattended Cooking	29
2/21/2007	St. Louis Park	Single Family	Careless Smoking	50
2/21/2007	Corcoran	Single Family	LP Gas Explosion	42
2/24/2007	Lakefield	Single Family	Child Play	9
2/24/2007	Lakefield	Single Family	Child Play	9
3/3/2007	Duluth	Single Family	Arson	77
3/8/2007	Hibbing	Single Family	Undetermined	66
3/8/2007	Landfall	Single Family	Undetermined	3
3/8/2007	Landfall	Single Family	Undetermined	25
3/8/2007	Landfall	Single Family	Undetermined	26
4/7/2007	Duluth	Street	Vehicle Collision	25
4/18/2007	Pierz	Outdoors	Undetermined	86
4/21/2007	Minneapolis	Boarding House/Hotel	Careless Smoking	63
4/26/2007	Osakis	Outdoors	Careless Open Burning	92
5/28/2007	Duluth	Single Family	Suicide	57
6/21/2007	St. Paul	Apartment	Careless Smoking	44
6/29/2007	Rochester	Vehicle	Suicide	19
7/4/2007	Frazee	Single Family	Electrical Malfunction	56
7/16/2007	Burnsville	Apartment	Careless Smoking	67
7/26/2007	Staples	Single Family	Careless Smoking	45
7/27/2007	Redby	Single Family	Careless Smoking	27
8/13/2007	St. Louis Park	Single Family	Undetermined	96
8/22/2007	Grasston	Outdoors	Careless Open Burning	60
10/2/2007	Breckenridge	Vehicle	Vehicle Collision	79
11/17/2007	North Mankato	Single Family	Arson	29
11/17/2007	North Mankato	Single Family	Arson	31
11/28/2007	Clearbrook	Pipeline Area	Pipeline Explosion	35
11/28/2007	Clearbrook	Pipeline Area	Pipeline Explosion	27
12/3/2007	Robbinsdale	Single Family	Suicide	59
12/3/2007	Minneapolis	Single Family	Careless Smoking	70
12/9/2007	Coon Rapids	Single Family	Combustible Material Too Close	71
12/16/2007	Elk River	Single Family	Suicide	43



## CIVILIAN DEATH RATES

*Fire deaths in greater Minnesota outpace those in the seven-county metro area by a rate nearly of two to one.*

In the last 24 years, 1,393 Minnesota civilians have died in fires (see distribution by county below). In 2007, 46% of our state population lived in greater Minnesota, where the per capita fire death rate was 1.04 deaths for every 100,000 people. The per capita fire death rate for the Metro area in 2007 was 0.53 per 100,000, while the rate for the state as a whole was 0.77 per 100,000. The national per capita fire death rate for 2006 was 1.08 per 100,000. (The United States consistently has one of the highest per capita fire death rates in the world.) Two counties in Minnesota have remained fatality free for 24 years: Norman and Traverse.



### 30+ YEARS OF FIRE DEATH HISTORY

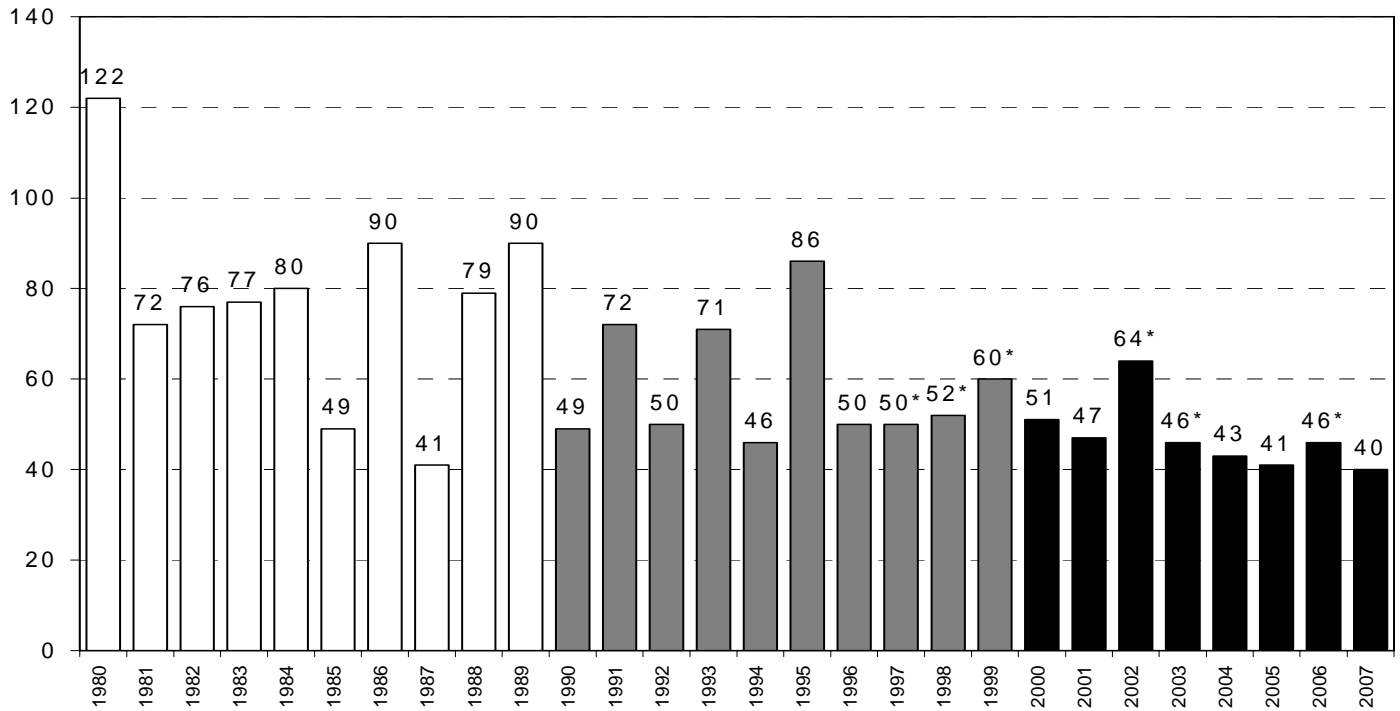
As Minnesota's population has grown from 3.8 million in 1970 to 4.9 million in 2000, fire deaths have decreased. During the 1980s, fire deaths in Minnesota dropped 19% from the levels of the 1970s. The 1990s show a further decrease of 25% from the levels in the 1980s.

Much of this decline in the fire death rate must be attributed to the fire service community. Since the mid-seventies, the promotion of fire protection technology (smoke alarms, sprinkler systems, etc.) has become widespread in Minnesota. Also during this time, the state has mandated new inspection/code enforcement programs targeting hotels, motels, schools, health care and day care facilities.

#### Minnesota's Fire Deaths

1970s	961 deaths
1980s	776 deaths
1990s	585 deaths
2000s	473 deaths (estimate)

#### FIRE DEATHS 1980 - 2007



\*Does not include firefighter deaths.

### FIREFIGHTER DEATHS

With great thankfulness, the Minnesota fire service reports no line-of-duty firefighter deaths in 2007. Minnesota is one of just 17 states to be spared this burden in 2007. Thirty-three states and the District of Columbia suffered the loss of a total of 118 firefighters in the effort to protect the lives and property of Americans. Seven fire incidents claimed the lives of more than one firefighter. Eleven firefighters died in wildland fires.

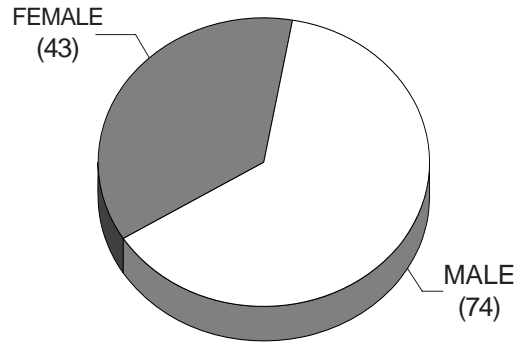
We remember with pride and gratitude those firefighters who gave their lives to protect us from fire.

*We honor all firefighters who have given their lives to protect others and remember them always with pride and gratitude.*

*In 2007, 117 civilians were injured in Minnesota fires. Sixty-three percent of those injured were males; 37% were females.*

## CIVILIAN INJURIES

In 2007, 117 civilian injuries were reported through the MFIRS system, a 19% decrease from 2006. The numbers do not represent the actual number of fire injuries occurring in the state, as it includes only those victims who have direct contact with the fire department. Many burn victims are taken to emergency rooms by private car or ambulance.



<u>AGE OF VICTIM</u>	<u>NO. OF VICTIMS</u>
0-19	16
20-39	36
40-59	40
60-OVER	16
UNREPORTED	<u>9</u>
<b>TOTAL</b>	<b>117</b>

A breakdown of reported injuries by gender shows there were nearly two-thirds more injuries to males than females.

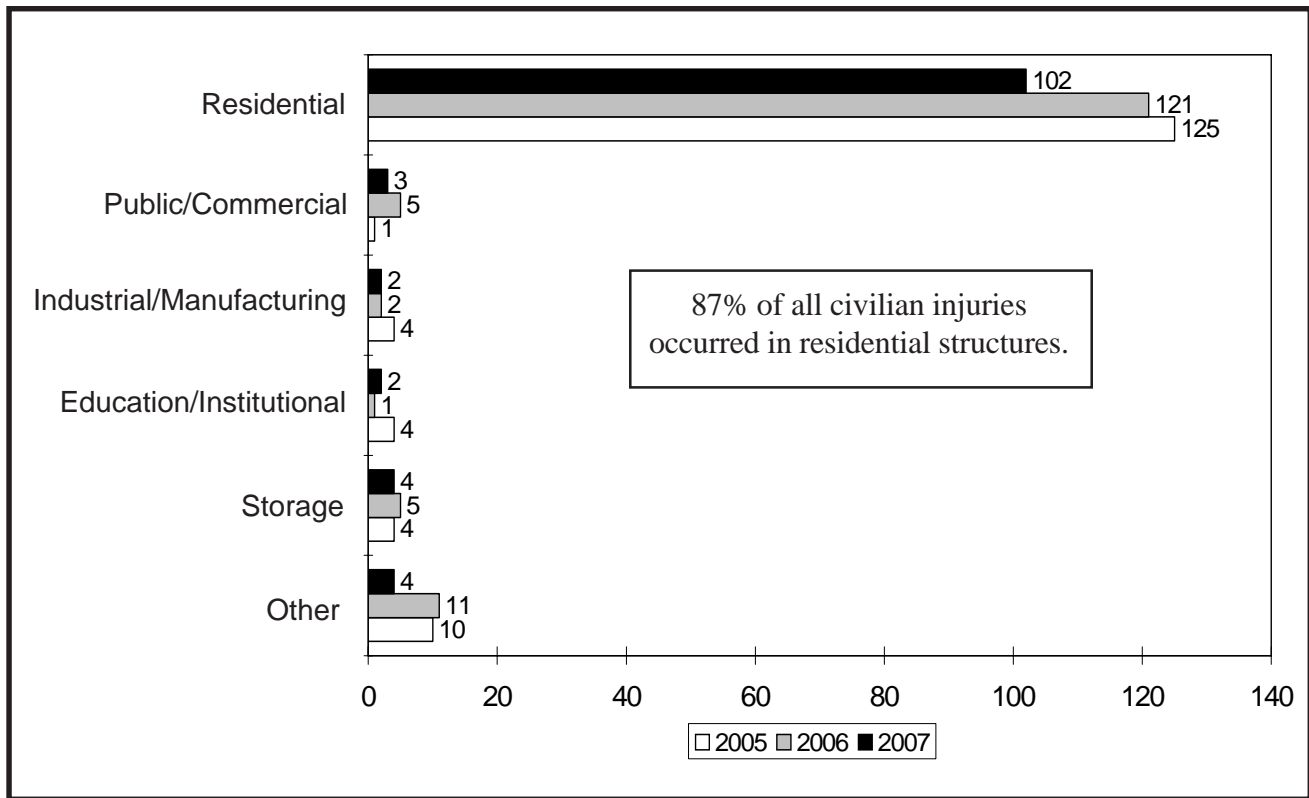
## ACTIVITY AT TIME OF FIRE

People trying to control a fire accounted for 26% of all civilian fire injuries; these numbers indicate an ongoing need to educate citizens of all ages on how to react to a fire. "Get Out and Stay Out" cannot be emphasized enough!

*Twenty-six percent of all injuries were to people trying to control or extinguish a fire.*

<b>CIVILIAN INJURIES BY ACTIVITY</b>		
<u>Activity</u>	<u>#</u>	<u>%</u>
Fire Control	30	26%
Sleeping	16	14%
Escape	15	13%
Irrational act	7	6%
Rescue attempt	5	4%
Unable to act	2	2%
Other	11	9%
Unkn/Unrep	<u>31</u>	<u>26%</u>
	117	100%

### CIVILIAN INJURIES BY PROPERTY TYPE



Like fire fatalities, civilian fire injuries occur most frequently in residential structures.

### CIVILIAN INJURIES BY ACTIVITY AND STRUCTURE

	<u>Residential</u>	<u>Pub/Comm</u>	<u>Indus/Manu</u>	<u>Educ/Inst</u>	<u>Storage</u>	<u>Other</u>
Fire Control	25	1	1	2	1	--
Escaping	15	--	--	--	--	--
Sleeping	16	--	--	--	--	--
Rescue Attempt	5	--	--	--	--	--
Irrational Action	1	--	--	--	--	1
Unable to Act	3	2	--	--	--	2
Other	7	--	1	--	3	--
Unknown	<u>30</u>	<u>--</u>	<u>--</u>	<u>--</u>	<u>--</u>	<u>1</u>
<b>TOTAL</b>	<b>102</b>	<b>3</b>	<b>2</b>	<b>2</b>	<b>4</b>	<b>4</b>

---



---

*Of the 444 firefighter injuries, 273 (61%) occurred in the course of fighting fires.*

---

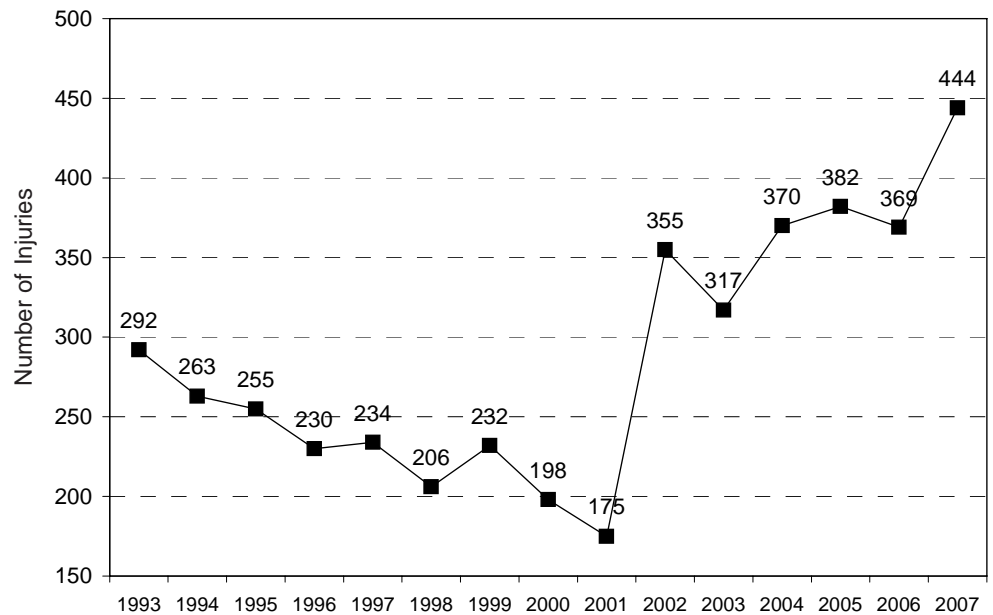


---

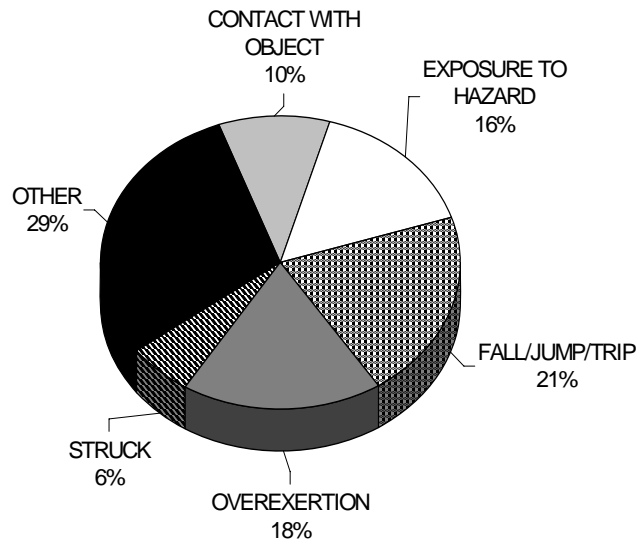
## FIREFIGHTER INJURIES

In 2007, 444 Minnesota firefighters were injured while responding to, involved in, or returning from emergency situations—an increase of 20%. Of the 444 injuries, 273 (61%) were directly fire related. (This does not include injuries that occurred during training or at the stations.) Seventy-five percent of these fire-related injuries occurred while firefighters were fighting residential structure fires.

### FIFTEEN-YEAR HISTORY OF MINNESOTA FIREFIGHTER INJURIES



### MINNESOTA FIREFIGHTER INJURIES: CAUSES




---



---

*Firefighter injury cause "exposure to hazard" includes exposure to heat, smoke or toxic agents.*

---



---

Of known causes, the main injury cause categories were "fall/jump/trip" at 21% with "overexertion" following at 18%.

## FIREWORKS INJURIES AND PROPERTY LOSS

The State Fire Marshal Division has gathered information about fireworks injuries and property damage since 1989. Minnesota hospitals voluntarily report injuries treated in their emergency departments during the period of June 25 to July 15 each year. Property damage information is taken from the Minnesota Fire Incident Reporting System. From 1989 through 2001, a total of \$1.6 million in property damage resulting from the use of fireworks was reported, averaging more than \$123,000 per year. Property damage reported from 2003 through 2007 totaled \$3.9 million, with \$2.3 million of that total reported in 2003.

Fireworks injuries most commonly occur to males between one and 19 years of age, with burns being the most common type of injury reported. Burn injuries include those to the extremities, eyes and face. It is impossible to know how many injuries occurred for which medical attention was not sought.

Prior to 2002, consumer fireworks were illegal in Minnesota. In 2002, certain types of non-aerial and non-explosive fireworks were legalized for use throughout the year. In 2002, 92 injuries were reported between June 25 and July 15, an increase of 306% over 2001. Reported injuries in 2003 totalled 89, then peaked to a high of 111 in 2004. In 2005, 91 total fireworks injuries were reported and a total of 58 fireworks injuries were reported in 2006. A slight increase (67 injuries) was reported in 2007. Approximately 85% of Minnesota hospitals participate in the survey of fireworks injuries.

### FIREWORKS INJURIES\* 2003-2007 (June-July) BY AGE

Years of Age	2003		2004		2005		2006		2007		TOTAL	
	No.	%	No.	%	No.	%	No.	%	No.	%	No.	%
0-9	18	20%	35	32%	20	22%	13	23%	15	23%	101	25%
10-19	29	33%	34	31%	38	42%	22	39%	17	26%	140	34%
20-29	16	18%	13	12%	13	14%	10	18%	19	29%	71	17%
30-39	11	12%	14	13%	10	11%	6	11%	9	14%	50	12%
40-49	13	15%	13	12%	7	8%	4	7%	4	6%	41	10%
50 Plus	2	2%	1	1%	3	3%	1	2%	1	2%	8	2%
<b>Total</b>	<b>89</b>	<b>100%</b>	<b>111<sup>†</sup></b>	<b>100%</b>	<b>91</b>	<b>100%</b>	<b>58<sup>†</sup></b>	<b>100%</b>	<b>67<sup>†</sup></b>	<b>100%</b>	<b>411</b>	<b>100%</b>
Male	62	70%	84	76%	69	76%	39	67%	46	69%	300	72%
Female	27	30%	27	24%	22	24%	19	33%	21	31%	116	28%

\*Information collected from survey conducted at Minnesota hospitals covering from June 25 through July 15 annually.

<sup>†</sup>There was one injury in 2004, two injuries in 2006, and two injuries in 2007 that listed age as "unknown" or "0".

### FIREWORKS INCIDENTS\* DOLLAR LOSS

	2003	2004	2005	2006	2007	TOTAL
<b>June-July</b>	\$623,150	\$363,450	\$233,925	\$373,410	\$300,600	\$1,894,535
<i>No. of Incidents</i>	76	48	61	116	141	442
<i>% of Total \$ Loss</i>	27%	60%	91%	97%	93%	48%
<i>Aver. Dollar Loss</i>	\$8,199	\$7,572	\$3,835	\$3,219	\$2,132	\$4,286
<b>Total/Year</b>	\$2,340,731	\$610,050	\$256,225	\$384,010	\$322,400	\$3,913,416
<i>No. of Incidents</i>	165	85	95	141	175	661
<i>Aver. Dollar Loss</i>	\$14,186	\$7,177	\$2,697	\$2,723	\$1,842	\$5,920

\*Information taken from the Minnesota Fire Incident Reporting System (MFIRS).

---

## SUMMARY

Historically, Minnesotans have been at greatest risk of fire death and injury in their own homes. In 2007, 78% of the state's fire deaths and 87% of civilian injuries occurred in residential settings. The presence or absence of a working smoke alarm is often a factor in fire fatalities. In 26% of fire deaths occurring in dwellings, smoke alarms were not present or not working. In 39% of residential deaths, it was not known whether alarms were present or functioning.

Careless smoking is once again the leading cause of fire deaths in 2007 at 20%. Alcohol or drug use was an impairing factor in 15% of all fire deaths.

Total fire deaths decreased by 15% from 2006; all age groups, except for the elderly (60+ years) had a decrease in fire fatalities.

Twenty-six percent of civilian fire injuries occurred during attempts to put the fire out, indicating a continuing need to educate our citizens on fire safe behaviors in the home. Getting out as quickly as possible, and not re-entering the home once outside, must be emphasized in all age groups.

Sixty-one percent of firefighter injuries took place while fighting fires; 75% of these fire-related injuries occurred at residential structure fires.

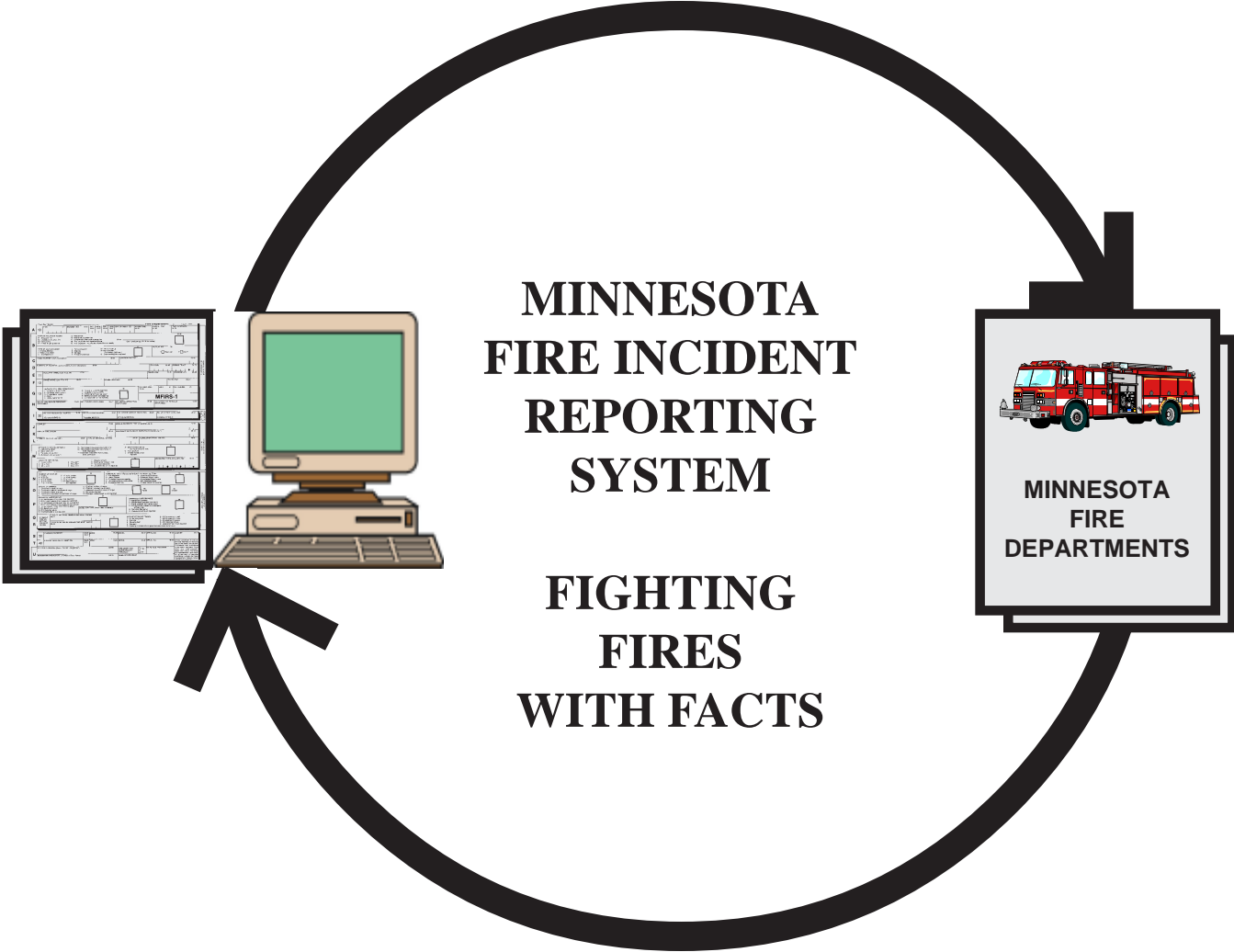
Statewide, fire deaths have decreased over the past 27 years, even as Minnesota's population has grown. However, many preventable tragedies continue to occur. **Prevention and education efforts, particularly those targeting vulnerable populations, are essential to reduce losses from fire.**





---

# PARTICIPATION



---

*Fire information is requested on a weekly basis by the media, the public, the fire service and the fire protection community.*

---

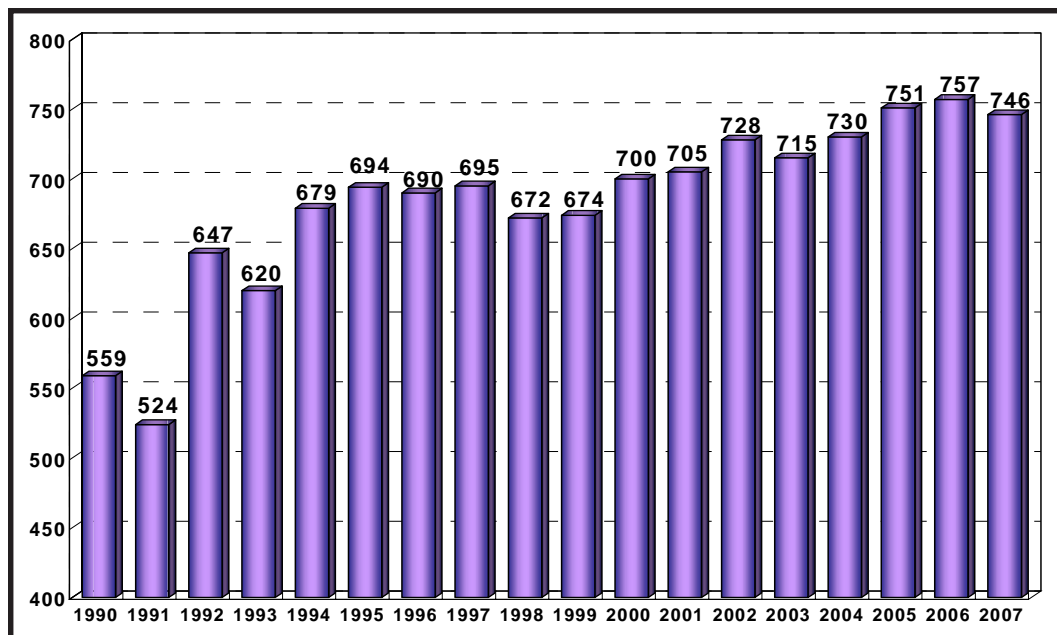
## **PARTICIPATION - Minnesota Fire Incident Reporting System**

The Minnesota State Fire Marshal Division appreciates the efforts of the fire departments who submitted Minnesota Fire Incident Reporting System (MFIRS) reports in 2007. This information is essential if we are to understand and effectively combat the fire problem in Minnesota. It allows the division to focus on real fire problems, rather than popular perceptions. On the local level, this data provides information to help us focus on prevention efforts; it also assists with budget plans for staffing and equipment.

**Fire information is requested on a weekly basis by the media, the public, the fire service and the fire protection community. It is used to support legislative initiatives and to guide public fire-safety campaigns.**

The reporting history of Minnesota fire departments from 2003-2007 is listed on the following pages. Reporting departments are listed by county. In 60 counties, 100% of the fire departments reported to the MFIRS system.

### **FIRE DEPARTMENTS' MFIRS PARTICIPATION**



---

*Fifty-four percent of reporting departments reported electronically in 2007.*

---

State and national organizations are requiring fire departments to report using their state's reporting system. A number of grants are awarded to fire departments with the requirement that the departments report their incidents. These include fire grants from the United States Fire Administration (USFA) and Department of Natural Resources (DNR) grants. For more information on reporting, call Nora Gierok at 651-201-7209.

**AITKIN COUNTY**

*(6) - 100% Reporting*

03 04 05 06 07

- \* \* \* \* \* AITKIN
- \* \* \* \* \* HILL CITY
- \* \* \* \* \* JACOBSON
- \* \* \* \* \* MCGRATH
- \* \* \* \* \* MCGREGOR VOL.
- \* \* \* \* \* PALISADE VOL.

**ANOKA COUNTY**

*(15) - 100% Reporting*

- \* \* \* \* \* ANDOVER
- \* \* \* \* \* ANOKA-CHAMPLIN
- \* \* \* \* \* BETHEL
- \* \* \* \* \* CENTENNIAL
- \* \* \* \* \* COLUMBIA HEIGHTS
- \* \* \* \* \* COON RAPIDS
- \* \* \* \* \* EAST BETHEL
- \* \* \* \* \* FRIDLEY
- \* \* \* \* \* HAM LAKE
- \* \* \* \* \* LEXINGTON
- \* \* \* \* \* LINWOOD VOL.
- \* \* \* \* \* OAK GROVE
- \* \* \* \* \* RAMSEY
- \* \* \* \* \* SPRING LAKE PARK
- \* \* \* \* \* ST FRANCIS

**BECKER COUNTY**

*(10) - 90% Reporting*

- \* \* \* \* \* AUDUBON
- \* \* \* \* \* CALLAWAY
- \* \* \* \* \* CARSONVILLE VOL.
- \* \* \* \* \* DETROIT LAKES
- \* \* \* \* \* ELBOW-TULABYLKS.
- \* \* \* \* \* FRAZEE
- \* \* \* \* \* LAKE PARK
- \* \* \* \* \* OGEMA
- \* \* \* \* \* WOLF LAKE
- \* \* \* \* \* White Earth

**BELTRAMI COUNTY**

*(6) - 83% Reporting*

03 04 05 06 07

- \* \* \* \* \* ALASKA
- \* \* \* \* \* BEMIDJI
- \* \* \* \* \* BLACKDUCK
- \* \* \* \* \* KELLIHER VOL.
- \* \* \* \* \* SOLWAY
- \* \* \* \* \* Red Lake

**BENTON COUNTY**

*(3) - 100% Reporting*

- \* \* \* \* \* FOLEY
- \* \* \* \* \* RICE
- \* \* \* \* \* SAUK RAPIDS

**BIG STONE COUNTY**

*(6) - 83% Reporting*

- \* \* \* \* \* BEARDSLEY
- \* \* \* \* \* CLINTON TWP.
- \* \* \* \* \* GRACEVILLE
- \* \* \* \* \* ODESSA
- \* \* \* \* \* ORTONVILLE
- \* \* \* \* \* Correll

**BLUE EARTH COUNTY**

*(12) - 92% Reporting*

- \* \* \* \* \* AMBOY
- \* \* \* \* \* EAGLE LAKE VOL.
- \* \* \* \* \* GOOD THUNDER
- \* \* \* \* \* LAKE CRYSTAL
- \* \* \* \* \* MADISON LAKE
- \* \* \* \* \* MANKATO
- \* \* \* \* \* MAPLETON
- \* \* \* \* \* SKYLINE
- \* \* \* \* \* SOUTH BEND
- \* \* \* \* \* ST CLAIR
- \* \* \* \* \* VERNON CENTER
- \* \* \* \* \* Pemberton

**BROWN COUNTY**

*(5) - 100% Reporting*

03 04 05 06 07

- \* \* \* \* \* COMFREY
- \* \* \* \* \* HANSKA
- \* \* \* \* \* NEW ULM
- \* \* \* \* \* SLEEPY EYE
- \* \* \* \* \* SPRINGFIELD VOL.

**CARLTON COUNTY**

*(13) - 92% Reporting*

- \* \* \* \* \* BARNUM VOL.
- \* \* \* \* \* BLACKHOOF
- \* \* \* \* \* CARLTON VOL.
- \* \* \* \* \* CLOQUET
- \* \* \* \* \* CROMWELL VOL.
- \* \* \* \* \* KETTLE RIVER
- \* \* \* \* \* MAHTOWA
- \* \* \* \* \* MOOSE LAKE
- \* \* \* \* \* PERCH LAKE VOL.
- \* \* \* \* \* SCANLON VOL.
- \* \* \* \* \* THOMSON TWP./ESKO
- \* \* \* \* \* WRENSHALL
- \* \* \* \* \* Wright Vol.

**CARVER COUNTY**

*(11) - 100% Reporting*

- \* \* \* \* \* CARVER
- \* \* \* \* \* CHANHASSEN
- \* \* \* \* \* CHASKA
- \* \* \* \* \* COLOGNE
- \* \* \* \* \* HAMBURG
- \* \* \* \* \* MAYER
- \* \* \* \* \* NEW GERMANY
- \* \* \* \* \* NORWD.-YNG.AMER.
- \* \* \* \* \* VICTORIA
- \* \* \* \* \* WACONIA
- \* \* \* \* \* WATERTOWN

**KEY**

- \* Fire department submitting MFIRS each year
- Fire department received USFA Fire Grant in 2006/2007

**CASS COUNTY**

(10) - 100% Reporting

03 04 05 06 07

\* \* \* \* \* BACKUS VOL.  
 \* \* \* \* \* CASS LAKE  
 \* \* \* \* \* CROOKED LAKE VOL.  
 \* \* \* \* \* FEDERAL DAM  
 \* \* \* \* \* HACKENSACK AREA  
 \* \* \* \* \* LONGVILLE VOL.  
 \* \* \* \* \* PILLAGER AREA  
 \* \* \* \* \* PINE RIVER  
 \* \* \* \* \* REMER  
 \* \* \* \* \* WALKER

**CHIPPEWA COUNTY**

(5) - 80% Reporting

\* \* \* \* \* MAYNARD  
 \* \* \* \* \* MILAN  
 \* \* \* \* \* MONTEVIDEO  
 \* \* \* \* \* WATSON  
 \* \* \* \* \* Clara City

**CHISAGO COUNTY**

(11) - 100% Reporting

\* \* \* \* \* ALMELUND  
 \* \* \* \* \* CENTER CITY  
 \* \* \* \* \* CHISAGO CITY  
 \* \* \* \* \* HARRIS  
 \* \* \* \* \* LINDSTROM  
 \* \* \* \* \* NORTH BRANCH  
 \* \* \* \* \* RUSH CITY  
 \* \* \* \* \* SHAFER  
 \* \* \* \* \* STACY-LENT  
 \* \* \* \* \* TAYLORS FALLS  
 \* \* \* \* \* WYOMING

**CLAY COUNTY**

(9) - 100% Reporting

\* \* \* \* \* BARNESVILLE  
 \* \* \* \* \* DILWORTH  
 \* \* \* \* \* FELTON COMM.  
 \* \* \* \* \* GLYNDON VOL.  
 \* \* \* \* \* HAWLEY  
 \* \* \* \* \* HITTERDAL  
 \* \* \* \* \* MOORHEAD  
 \* \* \* \* \* SABIN-ELMWOOD  
 \* \* \* \* \* ULEN

**CLEARWATER COUNTY**

(7) - 100% Reporting

03 04 05 06 07

\* \* \* \* \* BAGLEY  
 \* \* \* \* \* BEAR CREEK  
 \* \* \* \* \* CLEARBROOK  
 \* \* \* \* \* GONVICK  
 \* \* \* \* \* HANGAARD TWP.  
 \* \* \* \* \* ITASCA TWP.  
 \* \* \* \* \* SHEVLIN

**COOK COUNTY**

(9) - 67% Reporting

\* \* \* \* \* COLVILL AREA  
 \* \* \* \* \* GUNFLINT TRAIL  
 \* \* \* \* \* HOVLAND  
 \* \* \* \* \* LUTSEN TWP. VOL.  
 \* \* \* \* \* MAPLE HILL  
 \* \* \* \* \* TOFTE  
 \* \* \* \* \* Grand Marais Vol.  
 \* \* \* \* \* Grand Portage  
 \* \* \* \* \* Schroeder

**COTTONWOOD COUNTY**

(5) - 100% Reporting

\* \* \* \* \* JEFFERS  
 \* \* \* \* \* MOUNTAIN LAKE  
 \* \* \* \* \* STORDEN  
 \* \* \* \* \* WESTBROOK  
 \* \* \* \* \* WINDOM

**CROW WING COUNTY**

(13) - 92% Reporting

\* \* \* \* \* BRAINERD  
 \* \* \* \* \* CROSBY VOL.  
 \* \* \* \* \* CROSSLAKE  
 \* \* \* \* \* CUYUNA  
 \* \* \* \* \* DEERWOOD  
 \* \* \* \* \* EMILY VOL.  
 \* \* \* \* \* GARRISON  
 \* \* \* \* \* IDEAL TWP.  
 \* \* \* \* \* IRONTON  
 \* \* \* \* \* MISSION TWP.  
 \* \* \* \* \* NISSWA  
 \* \* \* \* \* PEQUOT LAKES  
 \* \* \* \* \* Fifty Lakes

**DAKOTA COUNTY**

(13) - 100% Reporting

03 04 05 06 07

\* \* \* \* \* APPLE VALLEY  
 \* \* \* \* \* BURNSVILLE  
 \* \* \* \* \* EAGAN  
 \* \* \* \* \* FARMINGTON  
 \* \* \* \* \* HASTINGS  
 \* \* \* \* \* INVER GROVE HGTS.  
 \* \* \* \* \* LAKEVILLE  
 \* \* \* \* \* MENDOTA HEIGHTS  
 \* \* \* \* \* MIESVILLE VOL.  
 \* \* \* \* \* RANDOLPH  
 \* \* \* \* \* ROSEMOUNT  
 \* \* \* \* \* SOUTH ST. PAUL  
 \* \* \* \* \* WEST ST. PAUL

**DODGE COUNTY**

(6) - 100% Reporting

\* \* \* \* \* CLAREMONT  
 \* \* \* \* \* DODGE CENTER  
 \* \* \* \* \* HAYFIELD  
 \* \* \* \* \* KASSON  
 \* \* \* \* \* MANTORVILLE  
 \* \* \* \* \* WEST CONCORD

**DOUGLAS COUNTY**

(10) - 91% Reporting

\* \* \* \* \* ALEXANDRIA  
 \* \* \* \* \* BRANDON  
 \* \* \* \* \* EVANSVILLE  
 \* \* \* \* \* FORADA  
 \* \* \* \* \* GARFIELD  
 \* \* \* \* \* KENSINGTON  
 \* \* \* \* \* LEAF VALLEY TWP.  
 \* \* \* \* \* MILLERVILLE  
 \* \* \* \* \* MILTONA  
 \* \* \* \* \* OSAKIS  
 \* \* \* \* \* Carlos

**FARIBAULT COUNTY**

*(11) - 100% Reporting*

03 04 05 06 07

- \* \* \* \* \* BLUE EARTH
- \* \* \* \* \* BRICELYN
- \* \* \* \* \* DELAVAN VOL.
- \* \* \* \* \* EASTON VOL.
- \* \* \* \* \* ELMORE
- \* \* \* \* \* FROST
- \* \* \* \* \* KIESTER
- \* \* \* \* \* MINNESOTA LAKE
- \* \* \* \* \* WALTERS VOL.
- \* \* \* \* \* WELLS
- \* \* \* \* \* WINNEBAGO VOL.

**FILLMORE COUNTY**

*(12) - 100% Reporting*

- \* \* \* \* \* CANTON
- \* \* \* \* \* **CHATFIELD**
- \* \* \* \* \* FOUNTAIN
- \* \* \* \* \* HARMONY
- \* \* \* \* \* LANESBORO
- \* \* \* \* \* MABEL VOL.
- \* \* \* \* \* OSTRANDER
- \* \* \* \* \* PRESTON
- \* \* \* \* \* RUSHFORD
- \* \* \* \* \* SPRING VALLEY
- \* \* \* \* \* WYKOFF

**FREEBORN COUNTY**

*(16) - 69% Reporting*

- \* \* \* \* \* ALBERT LEA
- \* \* \* \* \* ALBERT LEA TWP.
- \* \* \* \* \* **ALDEN**
- \* \* \* \* \* CLARKS GROVE VOL.
- \* \* \* \* \* CONGER
- \* \* \* \* \* EMMONS
- \* \* \* \* \* GLENVILLE
- \* \* \* \* \* HARTLAND
- \* \* \* \* \* HAYWARD
- \* \* \* \* \* MYRTLE
- \* \* \* \* \* TWIN LAKES
- \* \* \* \* \* Freeborn
- \* \* \* \* \* Geneva
- \* \* \* \* \* Hollandale
- \* \* \* \* \* London
- \* \* \* \* \* Manchester

**GOODHUE COUNTY**

*(7) - 100% Reporting*

03 04 05 06 07

- \* \* \* \* \* CANNON FALLS
- \* \* \* \* \* **GOODHUE**
- \* \* \* \* \* **KENYON**
- \* \* \* \* \* **PINE ISLAND**
- \* \* \* \* \* RED WING
- \* \* \* \* \* WANAMINGO
- \* \* \* \* \* ZUMBROTA

**GRANT COUNTY**

*(6) - 100% Reporting*

- \* \* \* \* \* **ASHBY**
- \* \* \* \* \* BARRETT
- \* \* \* \* \* ELBOW LAKE
- \* \* \* \* \* HERMAN
- \* \* \* \* \* HOFFMAN
- \* \* \* \* \* WENDELL

**HENNEPIN COUNTY**

*(30) - 100% Reporting*

- \* \* \* \* \* BLOOMINGTON
- \* \* \* \* \* BROOKLYN CENTER
- \* \* \* \* \* BROOKLYN PARK
- \* \* \* \* \* DAYTON
- \* \* \* \* \* EDEN PRAIRIE
- \* \* \* \* \* EDINA
- \* \* \* \* \* EXCELSIOR
- \* \* \* \* \* GOLDEN VALLEY
- \* \* \* \* \* **HAMEL**
- \* \* \* \* \* **HANOVER**
- \* \* \* \* \* HOPKINS
- \* \* \* \* \* LONG LAKE
- \* \* \* \* \* LORETTO VOL.
- \* \* \* \* \* **MAPLE GROVE**
- \* \* \* \* \* **MAPLE PLAIN**
- \* \* \* \* \* MEDICINE LAKE
- \* \* \* \* \* MINNEAPOLIS
- \* \* \* \* \* MINNETONKA
- \* \* \* \* \* MOUND
- \* \* \* \* \* MPLS./ST. PAUL INT'L  
AIRPORT
- \* \* \* \* \* **OSSEO**
- \* \* \* \* \* PLYMOUTH
- \* \* \* \* \* **RICHFIELD**
- \* \* \* \* \* ROBBINSDALE
- \* \* \* \* \* ROGERS
- \* \* \* \* \* ST. ANTHONY
- \* \* \* \* \* ST. BONIFACIUS
- \* \* \* \* \* ST. LOUIS PARK

03 04 05 06 07

- \* \* \* \* \* WAYZATA
- \* \* \* \* \* WEST METRO

**HOUSTON COUNTY**

*(7) - 100% Reporting*

- \* \* \* \* \* BROWNSVILLE
- \* \* \* \* \* CALEDONIA
- \* \* \* \* \* **EITZEN**
- \* \* \* \* \* HOKAH VOL.
- \* \* \* \* \* HOUSTON
- \* \* \* \* \* LACRESCENT
- \* \* \* \* \* SPRING GROVE

**HUBBARD COUNTY**

*(5) - 80% Reporting*

- \* \* \* \* \* **EAST HUBBARD CO.**
- \* \* \* \* \* **LAPORTE/LAKEPORT**
- \* \* \* \* \* NEVIS
- \* \* \* \* \* PARK RAPIDS
- \* \* \* \* \* Lake George

**ISANTI COUNTY**

*(4) - 100% Reporting*

- \* \* \* \* \* **BRAHAM**
- \* \* \* \* \* CAMBRIDGE
- \* \* \* \* \* DALBO
- \* \* \* \* \* ISANTI VOL.

**ITASCA COUNTY**

*(16) - 88% Reporting*

- \* \* \* \* \* BALSAM VOL.
- \* \* \* \* \* BEARVILLE TWP.
- \* \* \* \* \* BIGFORK VOL.
- \* \* \* \* \* BOVEY
- \* \* \* \* \* CALUMET
- \* \* \* \* \* COHASSET
- \* \* \* \* \* COLERAINE
- \* \* \* \* \* **DEER RIVER**
- \* \* \* \* \* **GRAND RAPIDS**
- \* \* \* \* \* KEEWATIN VOL.
- \* \* \* \* \* NASHWAUK
- \* \* \* \* \* SQUAW LAKE
- \* \* \* \* \* TACONITE
- \* \* \* \* \* WARBA
- \* \* \* \* \* Goodland
- \* \* \* \* \* Marble

**JACKSON COUNTY**

(5) - 100% Reporting

03 04 05 06 07

- \* \* \* \* \* ALPHA
- \* \* \* \* \* HERON LAKE VOL.
- \* \* \* \* \* JACKSON
- \* \* \* \* \* LAKEFIELD
- \* \* \* \* \* OKABENA

**KANABEC COUNTY**

(2) - 100% Reporting

- \* \* \* \* \* MORA
- \* \* \* \* \* OGILVIE

**KANDIYOHI COUNTY**

(11) - 91% Reporting

- \* \* \* \* \* ATWATER
- \* \* \* \* \* BLOMKEST
- \* \* \* \* \* KANDIYOHI
- \* \* \* \* \* LAKE LILLIAN
- \* \* \* \* \* NEW LONDON
- \* \* \* \* \* PENNOCK
- \* \* \* \* \* PRINSBURG
- \* \* \* \* \* RAYMOND
- \* \* \* \* \* SUNBURG
- \* \* \* \* \* WILLMAR
- \* \* \* \* \* Spicer

**KITTSON COUNTY**

(5) - 100% Reporting

- \* \* \* \* \* HALLOCK
- \* \* \* \* \* KARLSTAD VOL.
- \* \* \* \* \* KENNEDY
- \* \* \* \* \* LAKE BRONSON
- \* \* \* \* \* LANCASTER

**KOOCHICHING COUNTY**

(6) - 83% Reporting

- \* \* \* \* \* BIG FALLS VOL.
- \* \* \* \* \* BIRCHDALE RURAL
- \* \* \* \* \* INTERNATIONALFALLS
- \* \* \* \* \* LITTLEFORK
- \* \* \* \* \* NORTHOME
- \* \* \* \* \* Loman Rural

**LAC QUI PARLE COUNTY**

(7) - 100% Reporting

03 04 05 06 07

- \* \* \* \* \* BELLINGHAM
- \* \* \* \* \* BOYD
- \* \* \* \* \* DAWSON
- \* \* \* \* \* LOUISBURG
- \* \* \* \* \* MADISON
- \* \* \* \* \* MARIETTA
- \* \* \* \* \* NASSAU

**LAKE COUNTY**

(4) - 100% Reporting

- \* \* \* \* \* BEAVER BAY VOL.
- \* \* \* \* \* FINLAND
- \* \* \* \* \* SILVER BAY
- \* \* \* \* \* TWO HARBORS

**LAKE OF THE WOODS COUNTY**

(3) - 67% Reporting

- \* \* \* \* \* BAUDETTE
- \* \* \* \* \* WILLIAMS
- Northwest Angle

**LESUEUR COUNTY**

(8) - 100% Reporting

- \* \* \* \* \* CLEVELAND
- \* \* \* \* \* ELYSIAN
- \* \* \* \* \* KASOTA
- \* \* \* \* \* KILKENNY
- \* \* \* \* \* LE CENTER
- \* \* \* \* \* LESUEUR
- \* \* \* \* \* MONTGOMERY
- \* \* \* \* \* WATERVILLE

**LINCOLN COUNTY**

(5) - 100% Reporting

- \* \* \* \* \* ARCO
- \* \* \* \* \* HENDRICKS
- \* \* \* \* \* IVANHOE
- \* \* \* \* \* LAKE BENTON
- \* \* \* \* \* TYLER

**LYON COUNTY**

(10) - 100% Reporting

03 04 05 06 07

- \* \* \* \* \* BALATON
- \* \* \* \* \* COTTONWOOD
- \* \* \* \* \* GARVIN
- \* \* \* \* \* GHENT
- \* \* \* \* \* LYND
- \* \* \* \* \* MARSHALL
- \* \* \* \* \* MINNEOTA
- \* \* \* \* \* RUSSELL
- \* \* \* \* \* TAUNTON
- \* \* \* \* \* TRACY

**MCLEOD COUNTY**

(8) - 100% Reporting

- \* \* \* \* \* BROWNTON VOL.
- \* \* \* \* \* GLENCOE
- \* \* \* \* \* HUTCHINSON
- \* \* \* \* \* LESTER PRAIRIE
- \* \* \* \* \* PLATO
- \* \* \* \* \* SILVER LAKE
- \* \* \* \* \* STEWART
- \* \* \* \* \* WINSTED

**MAHNOMEN COUNTY**

(3) - 100% Reporting

- \* \* \* \* \* MAHNOMEN
- \* \* \* \* \* TWIN LAKES VOL.
- \* \* \* \* \* WAUBUN

**MARSHALL COUNTY**

(9) - 100% Reporting

- \* \* \* \* \* ALVARADO VOL.
- \* \* \* \* \* ARGYLE
- \* \* \* \* \* GRYGLA
- \* \* \* \* \* MIDDLE RIVER
- \* \* \* \* \* NEWFOLDEN
- \* \* \* \* \* OSLO
- \* \* \* \* \* STEPHEN
- \* \* \* \* \* VIKING
- \* \* \* \* \* WARREN

**MARTIN COUNTY**

*(10) - 100% Reporting*

03 04 05 06 07

\* \* \* \* \* CEYLON  
\* \* \* \* \* DUNNELL  
\* \* \* \* \* FAIRMONT  
\* \* \* \* \* GRANADA  
\* \* \* \* \* NORTHROP  
\* \* \* \* \* SHERBURN  
\* \* \* \* \* TRIMONT  
\* \* \* \* \* TRUMAN  
\* \* \* \* \* WELCOME

**MEEKER COUNTY**

*(6) - 100% Reporting*

\* \* \* \* \* COSMOS  
\* \* \* \* \* DASSEL  
\* \* \* \* \* EDEN VALLEY  
\* \* \* \* \* GROVE CITY  
\* \* \* \* \* LITCHFIELD  
\* \* \* \* \* WATKINS

**MILLE LACS COUNTY**

*(5) - 100% Reporting*

\* \* \* \* \* FORESTON  
\* \* \* \* \* ISLE  
\* \* \* \* \* MILACA  
\* \* \* \* \* ONAMIA  
\* \* \* \* \* PRINCETON

**MORRISON COUNTY**

*(10) - 100% Reporting*

\* \* \* \* \* BOWLUS  
\* \* \* \* \* FLENSBURG  
\* \* \* \* \* LITTLE FALLS  
\* \* \* \* \* MOTLEY  
\* \* \* \* \* PIERZ  
\* \* \* \* \* RANDALL  
\* \* \* \* \* ROYALTON  
\* \* \* \* \* SCANDIA VALLEY  
\* \* \* \* \* SWANVILLE  
\* \* \* \* \* UPSALA

**MOWER COUNTY**

*(9) - 89% Reporting*

03 04 05 06 07

\* \* \* \* \* ADAMS VOL.  
\* \* \* \* \* AUSTIN  
\* \* \* \* \* BROWNSDALE  
\* \* \* \* \* DEXTER VOL.  
\* \* \* \* \* GRAND MEADOW  
\* \* \* \* \* LE ROY  
\* \* \* \* \* LYLE  
\* \* \* \* \* ROSE CREEK AREA  
\* \* \* \* \* Maplevew

**MURRAY COUNTY**

*(8) - 63% Reporting*

\* \* \* \* \* CHANDLER  
\* \* \* \* \* CURRIE  
\* \* \* \* \* DOVRAY  
\* \* \* \* \* FULDA  
\* \* \* \* \* SLAYTON  
\* \* \* \* \* Avoca  
\* \* \* \* \* Iona  
\* \* \* \* \* Lake Wilson

**NICOLLET COUNTY**

*(5) - 100% Reporting*

\* \* \* \* \* COURTLAND  
\* \* \* \* \* LAFAYETTE  
\* \* \* \* \* NICOLLET  
\* \* \* \* \* NORTH MANKATO  
\* \* \* \* \* ST. PETER

**NOBLES COUNTY**

*(10) - 90% Reporting*

\* \* \* \* \* ADRIAN  
\* \* \* \* \* BIGELOW  
\* \* \* \* \* BREWSTER  
\* \* \* \* \* ELLSWORTH  
\* \* \* \* \* LISMORE  
\* \* \* \* \* ROUND LAKE  
\* \* \* \* \* RUSHMORE  
\* \* \* \* \* WILMONT  
\* \* \* \* \* WORTHINGTON  
\* \* \* \* \* Dundee

**NORMAN COUNTY**

*(8) - 100% Reporting*

03 04 05 06 07

\* \* \* \* \* ADA  
\* \* \* \* \* BORUP  
\* \* \* \* \* GARY VOL.  
\* \* \* \* \* HALSTAD  
\* \* \* \* \* HENDRUM  
\* \* \* \* \* PERLEY-LEE TWP.  
\* \* \* \* \* SHELLY  
\* \* \* \* \* TWIN VALLEY

**OLMSTED COUNTY**

*(7) - 100% Reporting*

\* \* \* \* \* BYRON  
\* \* \* \* \* DOVER  
\* \* \* \* \* EYOTA VOL.  
\* \* \* \* \* ORONOCO  
\* \* \* \* \* ROCHESTER  
\* \* \* \* \* ROCHESTER ARPT.  
\* \* \* \* \* STEWARTVILLE

**OTTER TAIL COUNTY**

*(16) - 100% Reporting*

\* \* \* \* \* BATTLE LAKE  
\* \* \* \* \* BLUFFTON  
\* \* \* \* \* DALTON  
\* \* \* \* \* DEER CREEK  
\* \* \* \* \* DENT  
\* \* \* \* \* ELIZABETH  
\* \* \* \* \* FERGUS FALLS  
\* \* \* \* \* HENNING VOL.  
\* \* \* \* \* NEW YORK MILLS  
\* \* \* \* \* OTTERTAIL  
\* \* \* \* \* PARKERS PRAIRIE  
\* \* \* \* \* PELICAN RAPIDS VOL.  
\* \* \* \* \* PERHAM  
\* \* \* \* \* UNDERWOOD  
\* \* \* \* \* VERGAS  
\* \* \* \* \* VINING

**PENNINGTON COUNTY**

*(3) - 100% Reporting*

\* \* \* \* \* GOODRIDGE AREA  
\* \* \* \* \* ST. HILAIRE  
\* \* \* \* \* THIEF RIVER FALLS

**PINE COUNTY**

(11) - 91% Reporting

03 04 05 06 07  
 \* \* \* \* \* ASKOV VOL.  
 \* \* \* \* \* BROOK PARK  
 \* \* \* \* \* BRUNO  
 \* \* \* \* \* DUXBURY  
 \* \* \* \* \* HINCKLEY VOL.  
 \* \* \* \* \* KERRICK  
 \* \* \* \* \* **PINE CITY**  
 \* \* \* \* \* SANDSTONE VOL.  
 \* \* \* \* \* **STURGEON LAKE**  
 \* \* \* \* \* WILLOW RIVER  
 Finlayson

**PIPESTONE COUNTY**

(6) - 100% Reporting

\* \* \* \* \* EDGERTON  
 \* \* \* \* \* HOLLAND  
 \* \* \* \* \* JASPER  
 \* \* \* \* \* PIPESTONE  
 \* \* \* \* \* RUTHTON  
 \* \* \* \* \* WOODSTOCK

**POLK COUNTY**

(12) - 100% Reporting

\* \* \* \* \* BELTRAMI  
 \* \* \* \* \* **CLIMAX**  
 \* \* \* \* \* CROOKSTON  
 \* \* \* \* \* **EAST GRAND FORKS**  
 \* \* \* \* \* ERSKINE  
 \* \* \* \* \* FERTILE  
 \* \* \* \* \* FISHER  
 \* \* \* \* \* FOSTON  
 \* \* \* \* \* MCINTOSH  
 \* \* \* \* \* **MENTOR**  
 \* \* \* \* \* NIELSVILLE  
 \* \* \* \* \* **WINGER**

**POPE COUNTY**

(6) - 100% Reporting

\* \* \* \* \* **CYRUS**  
 \* \* \* \* \* **GLENWOOD**  
 \* \* \* \* \* LOWRY  
 \* \* \* \* \* **SEDAN**  
 \* \* \* \* \* STARBUCK  
 \* \* \* \* \* **VILLARD VOL.**

**RAMSEY COUNTY**

(11) - 100% Reporting

03 04 05 06 07  
 \* \* \* \* \* FALCON HEIGHTS  
 \* \* \* \* \* FIRE MARSHAL  
 CENTRAL OFFICE  
 \* \* \* \* \* LAKE JOHANNA  
 \* \* \* \* \* LITTLE CANADA  
 \* \* \* \* \* **MAPLEWOOD**  
 \* \* \* \* \* **NEW BRIGHTON**  
 \* \* \* \* \* NORTH ST. PAUL  
 \* \* \* \* \* ROSEVILLE  
 \* \* \* \* \* ST. PAUL  
 \* \* \* \* \* VADNAIS HEIGHTS  
 \* \* \* \* \* WHITE BEAR LAKE

**RED LAKE COUNTY**

(3) - 100% Reporting

\* \* \* \* \* OKLEE  
 \* \* \* \* \* PLUMMER  
 \* \* \* \* \* RED LAKE FALLS

**REDWOOD COUNTY**

(14) - 100% Reporting

\* \* \* \* \* **BELVIEW**  
 \* \* \* \* \* CLEMENTS  
 \* \* \* \* \* LAMBERTON  
 \* \* \* \* \* LUCAN  
 \* \* \* \* \* **MILROY**  
 \* \* \* \* \* MORGAN  
 \* \* \* \* \* REDWOOD FALLS  
 \* \* \* \* \* REVERE  
 \* \* \* \* \* SANBORN  
 \* \* \* \* \* SEAFORTH  
 \* \* \* \* \* VESTA  
 \* \* \* \* \* WABASSO VOL.  
 \* \* \* \* \* WALNUT GROVE  
 \* \* \* \* \* WANDA

**RENVILLE COUNTY**

(10) - 100% Reporting

\* \* \* \* \* BIRD ISLAND  
 \* \* \* \* \* BUFFALO LAKE  
 \* \* \* \* \* DANUBE  
 \* \* \* \* \* FAIRFAX  
 \* \* \* \* \* **FRANKLIN**  
 \* \* \* \* \* HECTOR  
 \* \* \* \* \* **MORTON**  
 \* \* \* \* \* OLIVIA  
 \* \* \* \* \* RENVILLE  
 \* \* \* \* \* **SACRED HEART**

**RICE COUNTY**

(5) - 100% Reporting

03 04 05 06 07  
 \* \* \* \* \* FARIBAULT  
 \* \* \* \* \* LONSDALE  
 \* \* \* \* \* **MORRISTOWN**  
 \* \* \* \* \* NERSTRAND VOL.  
 \* \* \* \* \* NORTHFIELD

**ROCK COUNTY**

(6) - 100% Reporting

\* \* \* \* \* **BEAVER CREEK**  
 \* \* \* \* \* HARDWICK  
 \* \* \* \* \* HILLS  
 \* \* \* \* \* KENNETH VOL.  
 \* \* \* \* \* LUVERNE  
 \* \* \* \* \* MAGNOLIA

**ROSEAU COUNTY**

(4) - 75% Reporting

\* \* \* \* \* BADGER  
 \* \* \* \* \* GREENBUSH  
 \* \* \* \* \* ROSEAU  
 \* \* \* \* \* Warroad

**ST. LOUIS COUNTY**

(70) - 91% Reporting

\* \* \* \* \* **ALBORN**  
 \* \* \* \* \* ARROWHEAD  
 \* \* \* \* \* AURORA  
 \* \* \* \* \* BABBITT VOL.  
 \* \* \* \* \* **BIWABIK VOL.**  
 \* \* \* \* \* BREITUNG  
 \* \* \* \* \* **BREVATOR**  
 \* \* \* \* \* **BRIMSON AREA VOL.**  
 \* \* \* \* \* BUHL VOL.  
 \* \* \* \* \* BUYCK COMM. VOL.  
 \* \* \* \* \* CANOSIA VOL.  
 \* \* \* \* \* CENTRAL LAKES VOL.  
 \* \* \* \* \* CHERRY TWP.  
 \* \* \* \* \* CHISHOLM  
 \* \* \* \* \* **CLIFTON TWP.**  
 \* \* \* \* \* **CLINTON VOL.**  
 \* \* \* \* \* COLVIN TWP.  
 \* \* \* \* \* **COOK**  
 \* \* \* \* \* COTTON VOL.  
 \* \* \* \* \* CULVER  
 \* \* \* \* \* **DULUTH**  
 \* \* \* \* \* EAGLES NEST  
 \* \* \* \* \* **ELLSBURG**



03 04 05 06 07

\* \* \* \* \* ELMER  
 \* \* \* \* \* ELY  
 \* \* \* \* \* EMBARRASS VOL.  
 \* \* \* \* \* EVELETH  
 \* \* \* \* \* EVERGREEN  
 \* \* \* \* \* **FAYAL**  
 \* \* \* \* \* **FLOODWOOD**  
 \* \* \* \* \* FREDENBERG  
 \* \* \* \* \* FRENCH VOL.  
 \* \* \* \* \* GILBERT  
 \* \* \* \* \* GNESEN VOL.  
 \* \* \* \* \* **GRAND LAKE VOL.**  
 \* \* \* \* \* **GREENWOOD TWP.**  
 \* \* \* \* \* HERMANTOWN VOL.  
 \* \* \* \* \* HIBBING  
 \* \* \* \* \* **HOYT LAKES**  
 \* \* \* \* \* INDUSTRIAL VOL.  
 \* \* \* \* \* **KABETOGAMA**  
 \* \* \* \* \* **KELSEY VOL.**  
 \* \* \* \* \* KINNEY-GRT. SCOTT  
 \* \* \* \* \* **LAKELAND VOL.**  
 \* \* \* \* \* **LAKESWOOD TWP.**  
 \* \* \* \* \* MC DAVITT  
 \* \* \* \* \* MC KINLEY VOL.  
 \* \* \* \* \* MEADOWLANDS AREA  
 \* \* \* \* \* MORSE-FALL LK. VOL.  
 \* \* \* \* \* MOUNTAIN IRON  
 \* \* \* \* \* **NORMANNA VOL.**  
 \* \* \* \* \* NORTH STAR TWP.  
 \* \* \* \* \* NORTHLAND  
 \* \* \* \* \* PALO TWP.  
 \* \* \* \* \* PEQUAYWAN LAKE  
 \* \* \* \* \* PIKE-SANDY BRITT  
 \* \* \* \* \* PROCTOR  
 \* \* \* \* \* RICE LAKE VOL.  
 \* \* \* \* \* SILICA AREA  
 \* \* \* \* \* **SOLWAY RURAL**  
 \* \* \* \* \* TOIVOLA TWP.  
 \* \* \* \* \* **TOWER**  
 \* \* \* \* \* VERMILLION LAKE  
 \* \* \* \* \* VIRGINIA  
 \* \* \* \* \* Biwabik Twp.Vol.  
 \* \* \* \* \* Bois Forte  
 \* \* \* \* \* Crane Lake  
 \* \* \* \* \* Greaney-Rauch-  
 Silverdale  
 \* \* \* \* \* Makinen  
 \* \* \* \* \* Orr Vol.

**SCOTT COUNTY**

(8) - 100% Reporting

03 04 05 06 07

\* \* \* \* \* BELLE PLAINE  
 \* \* \* \* \* ELKO-NEW MARKET  
 \* \* \* \* \* **JORDAN**  
 \* \* \* \* \* NEW PRAGUE  
 \* \* \* \* \* PRIOR LAKE  
 \* \* \* \* \* SAVAGE  
 \* \* \* \* \* SHAKOPEE  
 \* \* \* \* \* SHAKOPEE MDEWAK.

**SHERBURNE COUNTY**

(6) - 100% Reporting

\* \* \* \* \* BECKER VOL.  
 \* \* \* \* \* **BIG LAKE**  
 \* \* \* \* \* CLEAR LAKE  
 \* \* \* \* \* **ELK RIVER**  
 \* \* \* \* \* NE. SHERBURNE  
 \* \* \* \* \* **ZIMMERMAN**

**SIBLEY COUNTY**

(7) - 100% Reporting

\* \* \* \* \* **ARLINGTON**  
 \* \* \* \* \* GAYLORD  
 \* \* \* \* \* GIBBON  
 \* \* \* \* \* **GREEN ISLE**  
 \* \* \* \* \* HENDERSON  
 \* \* \* \* \* NEW AUBURN  
 \* \* \* \* \* WINTHROP VOL.

**STEARNS COUNTY**

(24) - 96% Reporting

\* \* \* \* \* ALBANY  
 \* \* \* \* \* AVON  
 \* \* \* \* \* **BELGRADE**  
 \* \* \* \* \* **BROOTEN**  
 \* \* \* \* \* COLD SPRING  
 \* \* \* \* \* ELROSA  
 \* \* \* \* \* FREEPORT  
 \* \* \* \* \* HOLDINGFORD  
 \* \* \* \* \* KIMBALL  
 \* \* \* \* \* **LAKE HENRY**  
 \* \* \* \* \* **MELROSE**  
 \* \* \* \* \* **PAYNESVILLE**  
 \* \* \* \* \* RICHMOND  
 \* \* \* \* \* ROCKVILLE  
 \* \* \* \* \* **SARTELL-LESAUK**  
 \* \* \* \* \* SAUK CENTRE  
 \* \* \* \* \* **ST. AUGUSTA**  
 \* \* \* \* \* ST. CLOUD

03 04 05 06 07

\* \* \* \* \* ST. JOHN'S UNIV.  
 \* \* \* \* \* ST. JOSEPH VOL.  
 \* \* \* \* \* **ST. MARTIN**  
 \* \* \* \* \* ST. STEPHEN  
 \* \* \* \* \* WAITE PARK  
 \* \* \* \* \* New Munich

**STEELE COUNTY**

(4) - 75% Reporting

\* \* \* \* \* BLOOMING PRAIRIE  
 \* \* \* \* \* MEDFORD VOL.  
 \* \* \* \* \* OWATONNA  
 Ellendale Vol.

**STEVENS COUNTY**

(4) - 100% Reporting

\* \* \* \* \* CHOKIO  
 \* \* \* \* \* DONNELLY  
 \* \* \* \* \* HANCOCK  
 \* \* \* \* \* MORRIS

**SWIFT COUNTY**

(7) - 100% Reporting

\* \* \* \* \* APPLETON  
 \* \* \* \* \* BENSON  
 \* \* \* \* \* **CLONTARF**  
 \* \* \* \* \* DANVERS  
 \* \* \* \* \* DEGRAFF  
 \* \* \* \* \* KERKHOVEN  
 \* \* \* \* \* MURDOCK

**TODD COUNTY**

(8) - 88% Reporting

\* \* \* \* \* **BERTHA**  
 \* \* \* \* \* BROWERVILLE  
 \* \* \* \* \* **CLARISSA**  
 \* \* \* \* \* GREY EAGLE  
 \* \* \* \* \* HEWITT  
 \* \* \* \* \* **LONG PRAIRIE**  
 \* \* \* \* \* STAPLES  
 \* \* \* \* \* Eagle Bend

**TRAVERSE COUNTY**

(4) - 100% Reporting

\* \* \* \* \* BROWNS VALLEY  
 \* \* \* \* \* DUMONT  
 \* \* \* \* \* **TINTAH**  
 \* \* \* \* \* **WHEATON**

**WABASHA COUNTY**

(7) - 100% Reporting

03	04	05	06	07	
		*	*	*	ELGIN
*	*	*	*	*	KELLOGG
*	*	*	*	*	LAKE CITY
*	*	*	*	*	MAZEPPA VOL.
*	*	*	*	*	PLAINVIEW
*	*	*	*	*	WABASHA
*	*	*	*	*	ZUMBRO FALLS

**WADENA COUNTY**

(4) - 75% Reporting

*	*	*	*	*	SEBEKA
*	*	*	*	*	VERNDALE
*	*	*	*	*	WADENA
*	*	*			Menahga

**WASECA COUNTY**

(4) - 100% Reporting

*	*	*	*	*	JANESVILLE
*	*	*	*	*	NEW RICHLAND
*	*	*	*	*	WALDORF
*	*	*	*	*	WASECA

**WASHINGTON COUNTY**

(14) - 100% Reporting

*	*	*	*	*	BAYPORT
*	*	*	*	*	COTTAGE GROVE
*	*	*	*	*	FOREST LAKE
*	*	*	*	*	HUGO
*	*	*	*	*	LAKE ELMO
*	*	*	*	*	LOWER ST. CROIX VLY.
*	*	*	*	*	MAHTOMEDI
*	*	*	*	*	MARINE ON ST. CROIX
*	*	*	*	*	NEWPORT
*	*	*	*	*	OAKDALE
*	*	*	*	*	SCANDIA
*	*	*	*	*	ST. PAUL PARK VOL.
*	*	*	*	*	STILLWATER
*	*	*	*	*	WOODBURY

**WATONWAN COUNTY**

(8) - 100% Reporting

03	04	05	06	07	
*	*	*	*	*	BUTTERFIELD
*	*	*	*	*	DARFUR
*	*	*	*	*	LASALLE
*	*	*	*	*	LEWISVILLE
*	*	*	*	*	MADELIA
*	*	*	*	*	ODIN
*	*	*	*	*	ORMSBY
*	*	*	*	*	ST. JAMES

**WILKIN COUNTY**

(6) - 67% Reporting

*	*	*	*	*	BRECKENRIDGE
*	*	*	*	*	CAMPBELL
*	*	*	*	*	ROTHSAY
*	*	*	*	*	WOLVERTON
*	*	*	*		Abercrombie
*	*	*	*		Foxhome

**WINONA COUNTY**

(13) - 92% Reporting

*	*	*	*	*	ALTURA
*	*	*	*	*	DAKOTA
*	*	*	*	*	GOODVIEW
*	*	*	*	*	LEWISTON
*	*	*	*	*	MINNESOTA CITY
*	*	*	*	*	NODINE VOL.
*	*	*	*	*	PICKWICK AREA
*	*	*	*	*	RIDGEWAY COMM.
*	*	*	*	*	ROLLINGSTONE
*	*	*	*	*	ST. CHARLES
*	*	*	*	*	WILSON VOL.
*	*	*	*	*	WINONA
					Hidden Valley

**WRIGHT COUNTY**

(14) - 100% Reporting

03	04	05	06	07	
*	*	*	*	*	ALBERTVILLE
*	*	*	*	*	ANNANDALE
*	*	*	*	*	BUFFALO
*	*	*	*	*	CLEARWATER
*	*	*	*	*	COKATO
*	*	*	*	*	DELANO VOL.
*	*	*	*	*	HOWARD LAKE
*	*	*	*	*	MAPLE LAKE
*	*	*	*	*	MONTICELLO
*	*	*	*	*	MONTROSE
*	*	*	*	*	ROCKFORD
*	*	*	*	*	SOUTH HAVEN
*	*	*	*	*	ST. MICHAEL
*	*	*	*	*	WAVERLY

**YELLOW MEDICINE COUNTY**

(8) - 100% Reporting

*	*	*	*	*	CANBY
*	*	*	*	*	CLARKFIELD
*	*	*	*	*	ECHO
*	*	*	*	*	GRANITE FALLS
*	*	*	*	*	HANLEY FALLS
*	*	*	*	*	PORTER
*	*	*	*	*	ST. LEO
*	*	*	*	*	WOODLAKE

---

---

*Fifteen fire departments began participating in 2007.*

---

---

We welcome new and returning departments reporting in 2007:

Altura	Lake Lillian
Beaver Bay	Osseo
Bigfork	Perley-Lee Twp.
Buyck Comm.	Starbuck
Claremont	Stewartville
Eitzen	Walker
Granada	Wykoff
Hendricks	

We received no 2007 reports from the following departments that had reported in the past. We encourage them to report next year.

Abercrombie	Loman Rural
Avoca	Makinen
Biwabik Twp.	Mapleview
Carlos	Marble
Clara City	Menagha
Correll	New Munich
Crane Lake	Orr
Eagle Bend	Red Lake
Freeborn	Schroeder
Goodland	Spicer
Greaney-Rauch-Silverdale	Warroad
Lake George	White Earth
Lake Wilson	Wright

## FIRE DEPARTMENT RUNS, DOLLAR LOSSES, AND FIRE DEATHS PER COUNTY IN ORDER OF TOTAL DOLLAR LOSS

In some instances, the protection district of the reporting fire department goes beyond its county boundary, but the incident will still be recorded within the department's home county. (*Fire rate = one fire per number of persons indicated. For example, in Hennepin County in 2007, there was one fire for every 277 people.*)

<u>County</u>	<u>Population</u>	<u>Total Fire Runs</u>	<u>Total Other Runs</u>	<u>Total Co. Dollar Loss</u>	<u>Fire Rate</u>	<u>Average Dollar Loss/Fire</u>	<u>Fire Deaths</u>
*Hennepin	1,120,897	4,359	62,700	\$37,685,272	277	\$9,307	6
*Ramsey	499,498	1,950	22,884	\$10,763,680	260	\$5,612	6
Cook	5,317	195	35	\$10,525,150	30	\$59,130	
*Dakota	379,058	958	14,286	\$10,460,502	441	\$12,163	1
*Washington	216,660	608	10,999	\$8,293,809	420	\$16,073	1
Stearns	141,055	632	5,228	\$7,758,580	250	\$13,732	
St. Louis	198,136	1,277	15,138	\$6,798,075	198	\$6,791	4
*Anoka	319,950	1,034	14,656	\$6,220,955	356	\$6,920	1
*Wright	106,889	344	2,670	\$3,636,500	389	\$13,224	
*Polk	31,123	200	1,155	\$3,077,385	166	\$16,369	
*Olmsted	133,283	366	7,473	\$3,011,494	390	\$8,806	1
*Rice	60,418	206	1,758	\$2,689,116	305	\$13,581	
Crow Wing	59,431	254	818	\$2,677,850	274	\$12,340	
Kandiyohi	41,191	151	383	\$2,624,800	327	\$20,832	
*Scott	114,794	370	4,101	\$2,522,420	348	\$7,644	
*Carver	82,122	194	2,207	\$2,368,610	537	\$15,481	
*Faribault	15,642	91	109	\$2,323,900	237	\$35,211	
*Chisago	48,349	205	631	\$2,163,250	336	\$15,023	
Pine	28,116	174	207	\$2,078,361	225	\$16,627	1
*Clay	52,905	153	2,470	\$1,927,125	392	\$14,275	
Blue Earth	57,409	259	3,126	\$1,898,925	246	\$8,150	
*Wabasha	22,215	89	384	\$1,892,700	377	\$32,080	
*Cass	28,460	164	312	\$1,816,500	217	\$13,866	
Itasca	44,316	253	893	\$1,744,617	231	\$9,087	
Carlton	33,639	226	1,646	\$1,710,200	227	\$11,555	
*Martin	21,044	85	153	\$1,691,600	309	\$24,876	
Freeborn	31,971	98	475	\$1,609,782	410	\$20,638	
*Goodhue	45,496	181	1,543	\$1,515,561	301	\$10,037	2
*Redwood	16,201	104	42	\$1,405,100	213	\$18,488	
*Mille Lacs	25,079	113	325	\$1,324,100	276	\$14,551	
*Morrison	32,689	128	283	\$1,317,850	292	\$11,767	1
*Otter Tail	57,931	255	643	\$1,278,150	277	\$6,116	
Beltrami	42,263	147	2,696	\$1,199,400	318	\$9,018	2
Mower	38,998	139	401	\$1,167,230	307	\$9,191	
*Kanabec	16,056	58	61	\$1,122,110	357	\$24,936	
*Dodge	19,355	63	109	\$1,024,720	380	\$20,093	
*Marshall	10,015	92	121	\$953,900	130	\$12,388	
Wilkin	6,784	31	58	\$946,000	234	\$32,621	1
*Aitkin	16,031	100	115	\$896,000	191	\$10,667	
*Lake	11,218	43	142	\$893,500	330	\$26,279	
*Fillmore	21,321	80	131	\$866,400	300	\$12,203	1
Steele	35,166	114	490	\$784,200	329	\$7,329	
*Benton	38,099	153	479	\$725,000	278	\$5,292	
Todd	24,647	109	158	\$722,980	259	\$7,610	2
*Renville	16,701	81	49	\$721,050	229	\$9,877	

<u>County</u>	<u>Population</u>	<u>Total Fire Runs</u>	<u>Total Other Runs</u>	<u>Total Co. Dollar Loss</u>	<u>Fire Rate</u>	<u>Average Dollar Loss/Fire</u>	<u>Fire Deaths</u>
*Sherburne	78,762	226	1,360	\$662,150	421	\$3,541	1
*Pennington	13,545	64	166	\$651,300	218	\$10,505	
Douglas	34,628	131	337	\$587,850	286	\$4,858	
*Meeker	23,277	114	350	\$575,500	240	\$5,933	
*Isanti	36,546	131	632	\$570,400	326	\$5,093	
*Cottonwood	11,961	35	29	\$519,620	362	\$15,746	
*Clearwater	8,437	71	79	\$501,000	151	\$8,946	2
Roseau	16,308	44	40	\$498,200	441	\$13,465	
Winona	49,046	187	2,296	\$456,060	290	\$2,699	
*Yellow Medicine	10,580	52	32	\$452,000	230	\$9,826	
Becker	31,817	206	296	\$440,000	201	\$2,785	1
*Pope	11,227	67	115	\$421,000	225	\$8,420	
*Grant	6,118	45	75	\$382,000	170	\$10,611	
*LeSueur	27,166	84	396	\$371,000	388	\$5,300	1
Hubbard	18,849	73	41	\$364,700	299	\$5,789	
Lake of the Woods	4,404	22	12	\$354,100	315	\$25,293	
*Waseca	19,270	78	253	\$348,550	393	\$7,113	
*Lyon	24,703	141	176	\$343,700	284	\$3,951	
Koochiching	13,863	47	859	\$336,800	338	\$8,215	
*Brown	26,763	73	105	\$331,575	406	\$5,024	
*Nicollet	30,829	88	245	\$324,420	428	\$4,506	3
*Houston	19,890	43	396	\$319,740	622	\$9,992	
Nobles	20,477	81	147	\$316,100	293	\$4,516	
*Pipestone	9,579	45	124	\$238,100	239	\$5,953	
Big Stone	5,602	25	21	\$217,200	267	\$10,343	
Wadena	13,603	42	15	\$206,200	349	\$5,287	
*Lac Qui Parle	7,756	38	33	\$203,447	250	\$6,563	
*Norman	7,085	42	47	\$202,000	253	\$7,214	
*Swift	11,478	103	104	\$200,250	157	\$2,743	
*Rock	9,579	25	97	\$155,400	456	\$7,400	
*McLeod	36,190	149	731	\$139,700	315	\$1,215	
*Kittson	4,820	116	66	\$134,500	70	\$1,949	
*Stevens	9,935	34	68	\$116,000	320	\$3,742	
*Sibley	15,230	76	227	\$113,150	277	\$2,057	
Chippewa	12,659	26	31	\$99,000	527	\$4,125	
Murray	8,995	30	47	\$90,350	391	\$3,928	
*Mahnomen	5,081	34	30	\$73,650	242	\$3,507	
*Watonwan	11,390	51	111	\$63,300	345	\$1,918	
*Lincoln	6,178	30	9	\$37,050	281	\$1,684	
*Jackson	11,234	53	57	\$25,000	261	\$581	2
*Traverse	3,871	21	9	\$14,500	194	\$725	
*Red Lake	4,289	19	0	\$8,000	286	\$533	
		19,948	195,007 <sup>†</sup>	\$173,298,971	294	\$9,990	40

\*Indicates counties with 100% participation

<sup>†</sup>Total may not equal "other non-fire" run totals due to statistical inconsistencies in elements of the Minnesota Fire Incident Reporting System

## FIRE DEPARTMENT RESPONSES AND DOLLAR LOSS AS REPORTED BY MFIRS DATA

City	Total Fire Runs	Total Other Runs	Dollar Loss	City	Total Fire Runs	Total Other Runs	Dollar Loss	City	Total Fire Runs	Total Other Runs	Dollar Loss
ADA	7	10	\$39,500	BAYPORT	44	640	\$279,000	BROOTEN	17	27	\$221,300
ADAMS	7	23	\$100,500	BEARDSLEY	4	2	\$123,000	BROWERVILLE	26	19	\$120,000
ADRIAN	11	37	\$0	BEARVILLE TWP.	4	0	\$0	*BROWNS VALLEY	0	0	\$0
AITKIN	40	48	\$836,000	BEAVER BAY	3	6	\$0	BROWNSDALE	9	53	\$31,500
ALASKA	12	2	\$72,500	BEAVER CREEK	10	23	\$110,400	BROWNSVILLE	6	86	\$3,000
ALBANY	9	113	\$0	BECKER	44	385	\$160,000	BROWNTON	12	69	\$0
ALBERT LEA	45	387	\$171,082	BELGRADE	15	76	\$389,000	BRUNO	7	6	\$89,000
ALBERT LEA TWP.	7	1	\$22,000	BELLE PLAINE	18	94	\$0	BUFFALO	55	227	\$1,383,000
ALBERTVILLE	28	395	\$0	BELLINGHAM	4	9	\$7,500	BUFFALO LAKE	3	0	\$98,000
ALBORN	9	21	\$90,000	BELTRAMI	1	9	\$0	BUHL	7	12	\$0
ALDEN	6	53	\$7,000	BELVIEW	8	3	\$100	BURNSVILLE	171	4,421	\$4,189,836
ALEXANDRIA	65	128	\$456,400	BEMIDJI	101	2,668	\$540,000	BUTTERFIELD	2	2	\$0
ALMELUND	11	37	\$0	BENSON	40	60	\$117,000	BUYCK	1	0	\$0
ALPHA	3	11	\$0	BERTHA	4	8	\$50,000	BYRON	28	47	\$0
ALTURA	6	14	\$0	BETHEL	12	16	\$50,500	CALEDONIA	8	20	\$282,100
ALVARADO	13	37	\$0	BIG FALLS	1	0	\$5,000	CALLAWAY	6	5	\$0
AMBOY	6	33	\$255,000	BIG LAKE	28	200	\$0	CALUMET	11	89	\$0
ANDOVER	53	544	\$0	BIGELOW	4	1	\$0	CAMBRIDGE	45	91	\$0
ANNANDALE	19	185	\$4,000	BIGFORK	25	12	\$871,000	CAMPBELL	1	8	\$0
ANOKA-CHAMPLIN	94	594	\$557,950	*BIRCHDALE	0	0	\$0	CANBY	13	7	\$342,000
APPLE VALLEY	86	1,175	\$280,530	BIRD ISLAND	7	7	\$0	CANNON FALLS	32	301	\$0
APPLETON	18	13	\$3,000	BIWABIK	15	15	\$13,000	CANOSIA TWP.	23	105	\$3,000
*ARCO	0	0	\$0	BLACKDUCK	15	12	\$121,900	CANTON	1	0	\$0
ARGYLE	7	37	\$0	BLACKHOOF	8	4	\$0	CARLTON	16	44	\$276,000
ARLINGTON	21	43	\$8,000	BLOMKEST	11	2	\$578,000	CARSONVILLE	38	76	\$268,500
ARROWHEAD	6	25	\$0	BLOOMING PRAIRIE	22	17	\$73,500	CARVER	18	111	\$402,200
ASHBY	6	12	\$0	BLOOMINGTON	276	1,029	\$1,796,599	CASS LAKE	55	27	\$0
ASKOV	1	0	\$0	BLUE EARTH	28	53	\$2,055,000	CENTENNIAL	53	951	\$125,000
ATWATER	9	19	\$130,500	BLUFFTON	7	1	\$22,200	CENTER CITY	5	9	\$0
AUDUBON	21	22	\$0	BORUP	6	7	\$2,000	CENTRAL LAKES	1	0	\$0
AURORA	13	21	\$9,500	BOVEY	11	76	\$0	CEYLON	5	3	\$1,000
AUSTIN	93	275	\$927,030	BOWLUS	1	0	\$0	CHANDLER	2	18	\$0
AVON	13	108	\$0	BOYD	5	12	\$0	CHANHASSEN	31	540	\$1,375,000
BABBITT	16	26	\$0	BRAHAM	15	1	\$4,000	CHASKA	32	478	\$42,000
BACKUS	16	16	\$0	BRAINERD	99	360	\$1,426,100	CHATFIELD	11	32	\$0
BADGER	8	2	\$5,700	BRANDON	6	37	\$16,950	CHERRY TWP.	12	26	\$158,000
BAGLEY	40	8	\$0	BRECKENRIDGE	13	13	\$941,000	CHISAGO CITY	1	0	\$350,000
BALATON	18	16	\$200,000	BREITUNG TWP.	6	11	\$0	CHISHOLM	42	72	\$147,000
BALSAM VOL.	6	68	\$200	BREVATOR TWP.	22	83	\$0	CHOKIO	8	3	\$28,000
BARNESVILLE	13	28	\$14,100	BREWSTER	11	31	\$70,000	CLAREMONT	6	3	\$8,000
BARNUM	26	71	\$0	BRICELYN	4	1	\$11,000	CLARISSA	17	52	\$172,780
BARRETT	4	4	\$0	BRIMSON	1	6	\$0	CLARKFIELD	7	5	\$15,000
BASS BROOK TWP.	30	152	\$0	BROOK PARK	12	0	\$0	CLARKS GROVE	2	0	\$1,250,000
BATTLELAKE	15	3	\$0	BROOKLYN CENTER	128	934	\$727,000	CLEAR LAKE	24	140	\$202,150
BAUDETTE	14	7	\$254,100	BROOKLYN PARK	355	2,989	\$2,879,625	CLEARBROOK	13	59	\$0

<u>City</u>	<u>Total Fire Runs</u>	<u>Total Other Runs</u>	<u>Dollar Loss</u>	<u>City</u>	<u>Total Fire Runs</u>	<u>Total Other Runs</u>	<u>Dollar Loss</u>	<u>City</u>	<u>Total Fire Runs</u>	<u>Total Other Runs</u>	<u>Dollar Loss</u>
CLEARWATER	22	204	\$145,000	DELAVAN	8	0	\$158,600	FAIRFAX	16	3	\$302,500
CLEMENTS	0	2	\$0	DENT	8	1	\$157,000	FAIRMONT	45	117	\$1,434,600
CLEVELAND	8	69	\$0	DETROIT LAKES	57	155	\$0	FALCON HGTS.	22	90	\$240,500
CLIFTON TWP.	14	9	\$25,500	DEXTER	3	1	\$40,000	FARIBAULT	108	1,535	\$981,366
CLIMAX	5	18	\$0	DILWORTH	30	36	\$160,000	FARMINGTON	24	324	\$2,500
CLINTON	8	0	\$3,050	DODGE CENTER	8	19	\$3,000	FAYAL	27	64	\$0
CLINTON TWP.	16	6	\$30,000	DONNELLY	4	18	\$2,000	FEDERAL DAM	13	2	\$0
CLONTARF	5	0	\$0	DOVER	18	35	\$181,200	FELTON	5	0	\$0
CLOQUET	50	1,042	\$933,700	DOVRAY	2	1	\$0	FERGUS FALLS	49	180	\$455,550
COKATO	18	65	\$0	DULUTH	435	7,638	\$3,237,172	FERTILE	15	14	\$0
COLD SPRING	26	76	\$0	DUMONT	8	1	\$0	FINLAND	6	13	\$37,000
COLERAINE	14	98	\$500	DUNNELL	6	13	\$0	FISHER	5	21	\$42,700
COLOGNE	9	63	\$0	DUXBURY	4	0	\$20,000	FLENSBURG	1	0	\$100,000
COLUMBIA HGTS.	78	2,257	\$407,000	EAGAN	121	813	\$2,402,950	FLOODWOOD	10	0	\$100,500
COLVILL AREA	10	17	\$310,000	EAGLE LAKE	12	88	\$0	FOLEY	51	229	\$246,000
COLVIN TWP.	2	1	\$0	EAGLES NEST	2	1	\$0	FORADA TWP.	4	38	\$0
COMFREY	7	7	\$8,575	EAST BETHEL	55	515	\$0	FOREST LAKE	59	336	\$125,150
CONGER	7	1	\$0	EAST GRAND FORKS	42	657	\$920,210	FORESTON	7	52	\$0
COOK	29	15	\$175,000	EAST HUBBARD CO.	6	3	\$265,000	FOSSTON	18	39	\$595,000
COON RAPIDS	130	4,532	\$1,446,800	EASTON	5	6	\$24,000	FOUNTAIN	4	4	\$0
COSMOS	6	15	\$0	ECHO	3	0	\$0	FRANKLIN	7	3	\$5,000
COTTAGE GROVE	56	1,886	\$458,300	EDEN PRAIRIE	90	1,263	\$258,850	FRAZEE	33	21	\$0
COTTON VOL.	4	25	\$0	EDEN VALLEY	30	32	\$0	FREDENBERG TWP.	10	41	\$0
COTTONWOOD	16	11	\$3,000	EDGERTON	12	11	\$79,000	FREEPORT	3	0	\$172,000
COURTLAND	8	32	\$2,270	EDINA	103	4,424	\$358,450	FRENCH TWP.	3	10	\$570
CROMWELL VOL.	11	28	\$0	EITZEN	4	18	\$10,500	FRIDLEY	116	2,689	\$673,705
CROOKED LAKE TWP.	1	20	\$0	ELBOW LAKE	7	36	\$14,000	FROST	1	0	\$0
CROOKSTON	82	222	\$1,407,475	ELBOW-TULABY LKS.	8	6	\$105,000	FULDA	7	11	\$0
CROSBY	24	31	\$577,800	ELGIN	10	11	\$227,500	GARFIELD	7	10	\$1,000
CULVER	5	47	\$0	ELIZABETH	15	23	\$41,000	GARRISON	21	137	\$0
CURRIE	9	5	\$0	ELK RIVER	66	370	\$300,000	GARVIN	8	3	\$0
CUYUNA	1	5	\$0	ELKO-NEW MARKET	25	230	\$0	GARY	4	1	\$500
CYRUS	3	8	\$20,000	ELLSWORTH	7	26	\$5,000	GAYLORD	11	25	\$0
DAKOTA	13	69	\$0	ELMER	1	1	\$0	GHENT	7	11	\$0
DALBO	25	76	\$276,000	ELMORE	0	1	\$0	GIBBON	7	5	\$55,150
DALTON	18	38	\$45,000	ELROSA	5	11	\$0	GILBERT	12	12	\$0
DANUBE	8	0	\$0	ELY	22	53	\$137,700	GLENCOE	26	61	\$0
DANVERS	7	2	\$80,250	ELYSIAN	7	42	\$0	GLENVILLE	4	14	\$200
DARFUR	2	8	\$0	EMBARRASS	22	56	\$114,000	GLENWOOD	31	69	\$172,000
DASSEL	22	209	\$0	EMILY	10	17	\$7,000	GLYNDON	11	23	\$46,500
DAWSON	8	4	\$6,000	EMMONS	5	1	\$0	GNESEN TWP.	16	13	\$0
DAYTON	8	200	\$0	ERSKINE	9	54	\$0	GOLDEN VALLEY	71	681	\$6,000
DEER CREEK	5	20	\$112,500	EVANSVILLE	5	44	\$3,000	GONVICK	7	2	\$500,000
DEER RIVER	39	51	\$263,400	EVELETH	23	64	\$153,500	GOOD THUNDER	16	52	\$11,000
DEERWOOD	16	34	\$299,000	EVERGREEN	8	5	\$0	GOODHUE	19	88	\$415,061
DEGRAFF	8	0	\$0	EXCELSIOR	33	719	\$0	GOODRIDGE	10	0	\$115,800
DELANO	29	358	\$0	EYOTA	18	35	\$50,300	GOODVIEW	4	47	\$0

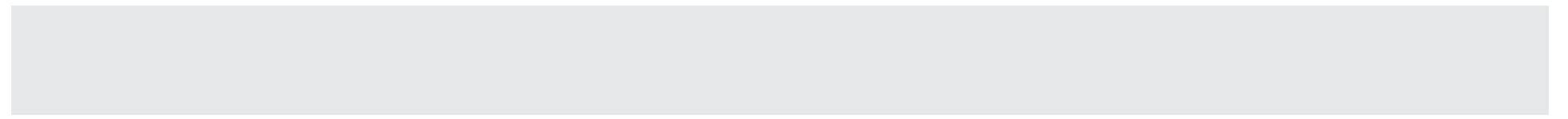
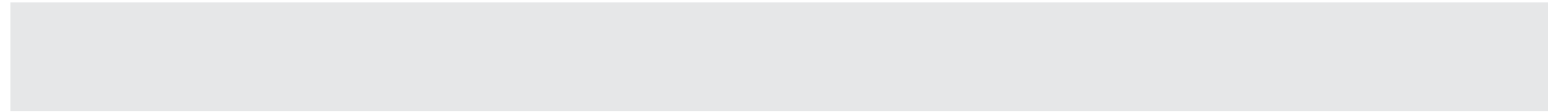
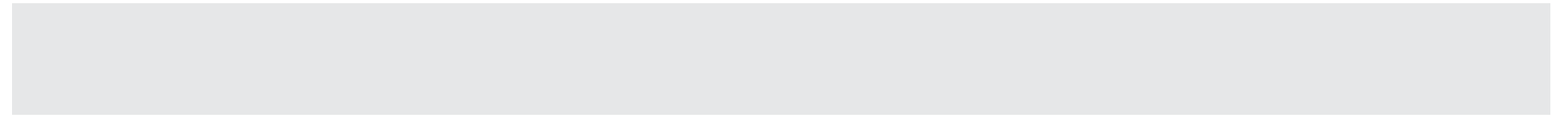
<u>City</u>	<u>Total Fire Runs</u>	<u>Total Other Runs</u>	<u>Dollar Loss</u>	<u>City</u>	<u>Total Fire Runs</u>	<u>Total Other Runs</u>	<u>Dollar Loss</u>	<u>City</u>	<u>Total Fire Runs</u>	<u>Total Other Runs</u>	<u>Dollar Loss</u>
GRACEVILLE	5	7	\$91,150	HOLLAND	3	5	\$0	LAKE CITY	22	103	\$740,200
GRANADA	1	0	\$0	HOPKINS	69	340	\$363,500	LAKE CRYSTAL	11	54	\$73,000
GRAND LAKE TWP.	22	110	\$121,000	HOUSTON	7	19	\$12,140	LAKE ELMO	46	323	\$1,229,875
GRAND MEADOW	11	31	\$0	HOVLAND	1	0	\$0	LAKE HENRY	5	4	\$205,000
GRAND RAPIDS	56	141	\$514,317	HOWARD LAKE	14	83	\$4,000	LAKE JOHANNA	52	611	\$624,225
GRANITE FALLS	13	12	\$0	HOYT LAKES	6	16	\$140,200	LAKE LILLIAN	6	9	\$483,000
GREEN ISLE	8	50	\$0	HUGO	50	382	\$0	LAKE PARK	12	6	\$40,500
GREENBUSH	9	5	\$492,500	HUTCHINSON	58	364	\$53,700	LAKEFIELD	14	11	\$25,000
GREENWOOD TWP.	12	92	\$0	IDEAL TWP.	17	18	\$0	LAKELAND TWP.	11	0	\$0
GREY EAGLE	8	6	\$3,700	INDUSTRIAL	10	31	\$0	LAKEVILLE	109	1,038	\$770,925
GROVE CITY	10	11	\$0	INTERNATIONAL FLLS.	33	848	\$120,500	LAKEWOOD TWP.	15	76	\$46,500
GRYGLA	2	0	\$225,000	INVER GROVE HGTS.	78	720	\$82,400	LAMBERTON	5	7	\$0
GUNFLINT TRAIL	165	1	\$10,135,650	IRONTON	9	0	\$131,950	LANCASTER	16	3	\$0
HACKENSACK	10	14	\$61,000	ISANTI	46	464	\$290,400	LANESBORO	6	10	\$0
HALLOCK	20	19	\$2,500	ISLE	26	28	\$531,500	LAPORTE/LAKEPORT	15	12	\$65,000
HALSTAD	8	6	\$20,000	*ITASCA TWP.	0	0	\$0	LASALLE	2	1	\$0
HAM LAKE	51	361	\$541,000	IVANHOE	3	0	\$0	LEAF VALLEY TWP.	4	4	\$50,000
HAMBURG	14	40	\$18,500	JACKSON	20	25	\$0	LECENTER	8	23	\$21,000
HAMEL	25	161	\$0	JACOBSON	8	11	\$60,000	LEROY	11	17	\$0
HANCOCK	8	10	\$86,000	JANESVILLE	17	137	\$0	LESTER PRAIRIE	13	87	\$0
HANLEY FALLS	7	1	\$26,000	JASPER	9	14	\$150,000	LESUEUR	19	43	\$350,000
HANOVER	26	116	\$3,500	JEFFERS	2	0	\$3,020	LEWISTON	21	37	\$216,000
HANSKA	7	0	\$0	JORDAN	27	91	\$162,700	LEWISVILLE	2	0	\$60,000
*HARDWICK	0	0	\$0	KABETOGEMA	0	10	\$0	LEXINGTON	12	160	\$140,000
HARMONY	13	6	\$80,000	KANDIYOHI	18	51	\$19,000	LINDSTROM	19	54	\$0
HARTLAND	3	0	\$20,000	KARLSTAD	39	20	\$0	LINWOOD TWP.	35	143	\$230,000
HASTINGS	120	437	\$1,192,325	KASOTA	15	84	\$0	LISMORE	3	0	\$0
HAWLEY	13	26	\$54,000	KASSON	14	39	\$93,500	LITCHFIELD	34	72	\$155,000
HAYFIELD	16	28	\$512,600	KEEWATIN	12	71	\$0	LITTLE CANADA	50	199	\$85,550
HAYWARD	10	3	\$0	KELLIHER	6	8	\$465,000	LITTLE FALLS	30	111	\$119,517
HECTOR	3	9	\$5,000	KELLOGG	15	21	\$160,000	LITTLEFORK	8	3	\$211,300
HENDERSON	11	52	\$50,000	KELSEY TWP.	0	2	\$0	LONG LAKE	33	446	\$176,000
HENDRICKS	6	3	\$2,050	KENNEDY	9	14	\$132,000	LONG PRAIRIE	25	31	\$0
HENDRUM	5	3	\$0	KENNETH	1	2	\$0	LONGVILLE	8	9	\$0
HENNING	13	6	\$20,000	KENSINGTON	6	1	\$3,000	LONSDALE	17	1	\$58,750
HERMAN	10	8	\$55,500	KENYON	12	27	\$2,000	LORETTO	23	144	\$791,000
HERMANTOWN	40	536	\$119,000	KERKHOVEN	19	25	\$0	LOUISBURG	2	0	\$0
HERON LAKE	7	7	\$0	KERRICK	1	0	\$450,000	LOWER ST. CROIX VLY.	19	332	\$730,500
HEWITT	4	1	\$253,500	KETTLE RIVER	7	3	\$10,000	LOWRY	15	5	\$29,000
HIBBING	120	2,222	\$847,600	KIESTER	10	5	\$0	LUCAN	9	6	\$0
HILL CITY	12	19	\$0	KILKENNY	5	0	\$0	LUTSEN	11	9	\$79,000
HILLS	4	30	\$7,000	KIMBALL	15	97	\$0	LUVERNE	10	42	\$38,000
HINCKLEY	36	32	\$403,711	KINNEY-GREAT SCOTT	5	2	\$0	LYLE	3	0	\$17,200
HITTERDAL	1	0	\$2,000	LACRESCENT	6	234	\$12,000	LYND	5	2	\$0
HOFFMAN	7	0	\$270,500	LAFAYETTE	11	8	\$0	MABEL	6	0	\$217,000
HOKAH	4	0	\$0	LAKE BENTON	12	0	\$0	MADIELIA	6	7	\$0
HOLDINGFORD	16	73	\$0	LAKE BRONSON	32	10	\$0	MADISON	9	4	\$37,447



<u>City</u>	<u>Total Fire Runs</u>	<u>Total Other Runs</u>	<u>Dollar Loss</u>	<u>City</u>	<u>Total Fire Runs</u>	<u>Total Other Runs</u>	<u>Dollar Loss</u>	<u>City</u>	<u>Total Fire Runs</u>	<u>Total Other Runs</u>	<u>Dollar Loss</u>
MADISON LAKE	11	56	\$126,000	MONTROSE	18	152	\$1,350,000	ODESSA	1	0	\$0
*MAGNOLIA	0	0	\$0	MOORHEAD	71	2,352	\$1,516,525	ODIN	12	26	\$500
MAHNOMEN	13	20	\$35,800	MOOSE LAKE	32	64	\$0	OGEMA	16	1	\$0
MAHTOMEDI	42	734	\$139,500	MORA	46	51	\$1,120,610	OGILVIE	12	10	\$1,500
MAHTOWA	14	31	\$400,000	MORGAN	3	5	\$47,000	OKABENA	9	3	\$0
MANKATO	150	2,618	\$511,925	MORRIS	14	37	\$0	OKLEE	13	0	\$3,000
MANTORVILLE	9	18	\$384,000	MORRISTOWN	5	0	\$96,000	OLIVIA	11	16	\$164,700
MAPLE GROVE	134	792	\$975,500	MORSE FALL LAKE	2	0	\$0	ONAMIA	2	4	\$0
MAPLE HILL	2	3	\$500	MORTON	6	1	\$50,000	ORMSBY	10	13	\$2,800
MAPLE LAKE	28	79	\$311,000	MOTLEY	20	133	\$136,133	ORONOCO	2	28	\$0
MAPLE PLAIN	21	259	\$101,325	MOUND	47	512	\$2,215,900	ORTONVILLE	7	12	\$0
MAPLETON	14	100	\$0	MOUNTAIN IRON	19	42	\$0	OSAKIS	20	27	\$0
MAPLEWOOD	133	3,649	\$474,850	MOUNTAIN LAKE	5	2	\$216,000	OSLO	2	1	\$20,100
MARIETTA	9	4	\$42,500	MPLS./STP. INT'L. ARPT.	77	2,734	\$57,400	OSSEO	4	267	\$0
MARINE ON ST. CROIX	14	58	\$0	MURDOCK	6	4	\$0	OSTRANDER	6	1	\$125,000
MARSHALL	48	93	\$0	MYRTLE	8	15	\$139,500	OTTERTAIL	11	68	\$0
MAYER	6	71	\$0	NASHWAUK	21	17	\$56,200	OWATONNA	84	398	\$710,700
MAYNARD	1	0	\$15,000	NASSAU	1	0	\$110,000	PALISADE	2	0	\$0
MAZEPPA	7	77	\$0	NERSTRAND	3	3	\$0	PALO TWP.	8	47	\$200,000
MCDAVITT	14	42	\$4,000	NEVIS	18	1	\$8,000	PARK RAPIDS	34	25	\$26,700
MCGRATH	1	2	\$0	NEW AUBURN	7	36	\$0	PARKERS PRAIRIE	8	12	\$250,000
MCGREGOR	37	35	\$0	NEW BRIGHTON	90	244	\$390,595	PAYNESVILLE	29	68	\$1,120,050
MCINTOSH	10	61	\$51,000	NEW GERMANY	10	34	\$0	PELICAN RAPIDS	15	27	\$0
MCKINLEY	1	3	\$0	NEW LONDON	25	42	\$262,000	PENNOCK	3	2	\$0
MEADOWLANDS	5	4	\$25,000	NEW PRAGUE	30	93	\$159,000	PEQUAYWAN LK.	1	4	\$0
MEDFORD	8	75	\$0	NEW RICHLAND	20	28	\$204,050	PEQUOT LAKES	29	55	\$148,000
*MEDICINE LAKE	0	0	\$0	NEW ULM	35	68	\$111,000	PERCH LAKE VOL.	11	59	\$65,000
MELROSE	16	66	\$400,000	NEW YORK MILLS	20	93	\$0	PERHAM	36	77	\$141,000
MELRUDE	5	14	\$77,500	NEWFOLDEN	17	8	\$205,000	PERLEY-LEE TWP.	1	3	\$0
MENDOTA HGTS.	41	219	\$250,960	NEWPORT	15	66	\$0	PICKWICK AREA	4	21	\$0
MENTOR	6	59	\$60,000	NICOLLET	15	72	\$0	PIERZ	31	28	\$256,200
MIDDLE RIVER	7	0	\$405,000	NIELSVILLE	1	0	\$0	PIKE-SANDY-BRITT	10	3	\$280,000
MIESVILLE	14	49	\$108,000	NISSWA	19	61	\$87,000	PILLAGER	18	161	\$10,000
MILACA	41	76	\$140,600	NODINE	14	68	\$2,560	PINE CITY	52	109	\$999,150
MILAN	4	1	\$84,000	NORMANNA TWP.	11	19	\$28,000	PINE ISLAND	28	208	\$90,000
MILLERVILLE	7	1	\$0	NORTH BRANCH	42	88	\$0	PINE RIVER	16	34	\$113,000
MILROY	1	0	\$0	NORTH MANKATO	33	101	\$0	PIPESTONE	15	81	\$7,100
MILTONA	7	47	\$57,500	NORTH ST. PAUL	49	809	\$0	PLAINVIEW	12	42	\$475,000
MINNEAPOLIS	1,881	32,143	\$17,807,930	NORTH STAR TWP.	0	15	\$0	PLATO	5	38	\$0
MINNEOTA	16	12	\$26,700	NE SHERBURNE	24	153	\$0	PLUMMER	3	0	\$0
MINNESOTA CITY	5	18	\$0	NORTHFIELD	73	219	\$1,553,000	PLYMOUTH	197	1,315	\$6,074,575
MINNESOTA LAKE	2	0	\$0	NORTHLAND TWP.	4	6	\$200	PORTER	4	7	\$0
MINNETONKA	82	432	\$2,000	NORTHOME	5	8	\$0	PRESTON	10	9	\$197,000
MISSION TWP.	9	100	\$1,000	NORTHROP	1	0	\$150,000	PRINCETON	37	165	\$652,000
MONTEVIDEO	19	30	\$0	NORWOOD/YNG. AMER.	19	152	\$76,060	PRINSBURG	2	1	\$2,500
MONTGOMERY	11	14	\$0	OAK GROVE	35	153	\$0	PRIOR LAKE	80	1,034	\$843,500
MONTICELLO	41	276	\$350,000	OAKDALE	69	1,672	\$718,000	PROCTOR	15	220	\$95,000

<u>City</u>	<u>Total Fire Runs</u>	<u>Total Other Runs</u>	<u>Dollar Loss</u>	<u>City</u>	<u>Total Fire Runs</u>	<u>Total Other Runs</u>	<u>Dollar Loss</u>	<u>City</u>	<u>Total Fire Runs</u>	<u>Total Other Runs</u>	<u>Dollar Loss</u>
RAMSEY	70	418	\$90,000	SHAFER	11	82	\$0	STILLWATER	85	1,413	\$1,921,650
RANDALL	13	2	\$479,000	SHAKOPEE	115	494	\$774,200	STORDEN	3	0	\$0
RANDOLPH	15	14	\$102,000	SHAKOPEE MDEWAK.	33	1,707	\$9,020	STURGEON LAKE	12	5	\$0
RAYMOND	5	0	\$2,400	SHELLY	1	2	\$0	SUNBURG	5	0	\$0
RED LAKE FALLS	3	0	\$5,000	SHERBURN	10	13	\$96,000	SWANVILLE	7	1	\$66,500
RED WING	52	879	\$646,000	SHEVLIN	11	10	\$1,000	TACONITE	2	24	\$3,000
REDWOOD FALLS	41	11	\$997,000	SILICA AREA	5	12	\$0	TAUNTON	2	1	\$0
REMER	10	17	\$1,632,500	SILVER BAY	12	36	\$1,000	TAYLORS FALLS	4	0	\$0
RENVILLE	8	8	\$25,850	SILVER LAKE	16	93	\$0	THIEF RIVER FALLS	48	143	\$501,000
RICE	21	112	\$303,500	*SKYLINE	0	0	\$0	THOMPSN. TWP./ESKO	26	151	\$25,500
RICE LAKE TWP.	21	115	\$0	SLAYTON	10	12	\$90,350	TINTAH	4	5	\$11,500
RICHFIELD	138	3,667	\$992,327	SLEEPY EYE	16	3	\$212,000	TOFTE	6	5	\$0
RICHMOND	24	114	\$215,000	SOLWAY	13	6	\$0	*TOIVOLA	0	0	\$0
RIDGEWAY COMM.	7	31	\$10,000	SOLWAY TWP.	18	56	\$252,033	TOWER	4	2	\$9,500
ROBBINSDALE	92	288	\$538,550	SOUTH BEND	18	29	\$29,000	TRACY	17	27	\$114,000
ROCHESTER ARPT.	0	17	\$0	SOUTH HAVEN	21	98	\$0	TRIMONT	7	5	\$0
ROCHESTER	283	7,259	\$2,774,894	SOUTH ST. PAUL	101	1,898	\$646,776	TRUMAN	2	0	\$0
ROCKFORD	13	161	\$0	SPRING GROVE	8	19	\$0	TWIN LAKES	11	5	\$3,650
ROCKVILLE	21	102	\$0	SPRING LAKE PARK	188	992	\$1,598,950	TWIN VALLEY	10	15	\$140,000
ROGERS	40	501	\$0	SPRING VALLEY	12	31	\$123,400	TWO HARBORS	22	87	\$855,500
ROLLINGSTONE	3	11	\$110,000	SPRINGFIELD	8	27	\$0	TYLER	9	6	\$35,000
ROSE CREEK	2	1	\$51,000	SQUAW LAKE	10	30	\$36,000	ULEN	3	1	\$24,000
ROSEAU	27	33	\$0	ST. ANTHONY	40	936	\$22,450	UNDERWOOD	19	67	\$15,100
ROSEMOUNT	11	602	\$55,500	ST. AUGUSTA	9	29	\$0	UPSALA	7	5	\$110,500
ROSEVILLE	83	4,080	\$478,600	ST. BONIFACIUS	21	115	\$0	VADNAIS HGTS.	38	721	\$129,200
ROTHSAY	14	33	\$5,000	ST. CHARLES	10	20	\$60,000	VERGAS	15	14	\$18,800
ROUND LAKE	3	3	\$500	ST. CLAIR	17	78	\$893,000	VERMILLION LAKE	7	1	\$53,000
ROYALTON	13	2	\$0	ST. CLOUD	263	3,356	\$1,729,030	VERNDALE	8	1	\$20,500
RUSH CITY	30	39	\$0	ST. FRANCIS	52	331	\$360,050	VERNON CENTER	4	18	\$0
RUSHFORD	10	38	\$124,000	ST. HILLAIRE	6	23	\$34,500	VESTA	6	4	\$202,000
RUSHMORE	3	6	\$120,000	ST. JAMES	15	54	\$0	VICTORIA	13	242	\$17,500
RUSSELL	4	0	\$0	ST. JOHN'S UNIV.	7	298	\$1,500	VIKING	6	13	\$0
RUTHTON	4	11	\$0	ST. JOSEPH	30	250	\$15,000	VILLARD	1	0	\$200,000
SABIN-ELMWOOD	6	4	\$110,000	ST. LEO	3	0	\$29,000	VINING	1	0	\$0
SACRED HEART	12	2	\$70,000	ST. LOUIS PARK	166	4,110	\$723,211	VIRGINIA	51	2,952	\$105,100
SANBORN	5	0	\$0	ST. MARTIN	8	17	\$4,000	WABASHA	11	52	\$20,000
SANDSTONE	38	51	\$116,500	ST. MICHAEL	30	287	\$89,500	WABASSO	10	2	\$151,500
SARTELL/LESNAUK	29	110	\$117,500	ST. PAUL	1,333	12,031	\$7,369,560	WACONIA	19	266	\$392,850
SAUK CENTRE	36	45	\$2,915,200	ST. PAUL PARK	25	105	\$0	WADENA	16	11	\$0
SAUK RAPIDS	81	138	\$175,500	ST. PETER	21	32	\$322,150	WAITE PARK	25	121	\$225,000
SAVAGE	42	358	\$574,000	ST. STEPHEN	11	67	\$29,000	WALDORF	8	32	\$7,200
SCANDIA	17	169	\$10,000	STACY	40	72	\$291,750	WALKER	17	12	\$0
SCANDIA VALLEY	5	1	\$50,000	STAPLES	25	41	\$123,000	WALNUT GROVE	8	2	\$7,500
SCANLON	8	89	\$0	STARBUCK	14	33	\$0	WALTERS	4	0	\$500
SEAFORTH	7	0	\$0	STEPHEN	14	11	\$62,800	WANAMINGO	17	10	\$0
SEBEKA	18	3	\$185,700	STEWART	8	0	\$86,000	WANDA	1	0	\$0
SEDAN	3	0	\$0	STEWARTVILLE	17	52	\$5,100	WARBA	12	64	\$0

<u>City</u>	<u>Total Fire Runs</u>	<u>Total Other Runs</u>	<u>Dollar Loss</u>	<u>City</u>	<u>Total Fire Runs</u>	<u>Total Other Runs</u>	<u>Dollar Loss</u>	<u>City</u>	<u>Total Fire Runs</u>	<u>Total Other Runs</u>	<u>Dollar Loss</u>
WARREN	24	27	\$36,000	WEST ST. PAUL	67	2,576	\$375,800	WINTHROP	11	16	\$0
WASECA	33	56	\$137,300	WESTBROOK	3	3	\$75,000	WOLF LAKE	15	4	\$26,000
WATERTOWN	23	210	\$44,500	WHEATON	9	3	\$3,000	WOLVERTON	3	4	\$0
WATERVILLE	11	121	\$0	WHITE BEAR LAKE	96	450	\$970,600	WOOD LAKE	2	0	\$40,000
WATKINS	12	11	\$420,500	WILLIAMS	8	5	\$100,000	WOODBURY	67	2,883	\$2,681,834
WATSON	2	0	\$0	WILLMAR	67	257	\$1,147,400	WOODSTOCK	2	2	\$2,000
WAUBUN	11	5	\$34,200	WILLOW RIVER	11	4	\$0	WORTHINGTON	31	43	\$73,100
WAVERLY	8	100	\$0	WILMONT	8	0	\$47,500	WRENSHALL	17	60	\$0
WAYZATA	36	274	\$0	WILSON TWP.	8	20	\$0	WYKOFF	1	0	\$0
WELCOME	8	2	\$10,000	WINDOM	22	24	\$225,600	WYOMING	42	250	\$1,521,500
WELLS	19	24	\$3,800	WINGER	6	1	\$1,000	ZIMMERMAN	40	112	\$0
WENDELL	11	15	\$42,000	WINNEBAGO	10	19	\$71,000	ZUMBRO FALLS	12	78	\$270,000
WEST CONCORD	10	2	\$23,620	WINONA	92	1,940	\$57,500	ZUMBROTA	21	30	\$362,500
WEST METRO	143	909	\$813,580	WINSTED	11	19	\$0				



\*These fire departments reported as having no fire/nonfire runs for 2007.

## NON-REPORTING FIRE DEPARTMENTS

ABERCROMBIE	HOLLANDALE
AVOCA	IONA
BIWABIK TWP. VOL.	LAKE GEORGE
BOIS FORTE VOL.	LAKE WILSON
CARLOS	LOMAN RURAL
CLARA CITY	LONDON
CORRELL	MAKINEN
CRANE LAKE	MANCHESTER
DUNDEE	MAPLEVIEW
EAGLE BEND	MARBLE
ELLENDALE VOL.	MENAHGA
FIFTY LAKES	NEW MUNICH
FINLAYSON	NORTHWEST ANGLE
FOXHOME	ORR VOL.
FREEBORN	PEMBERTON
GENEVA	RED LAKE
GOODLAND	SCHROEDER
GRAND MARAIS VOL.	SPICER
GRAND PORTAGE	WARROAD
GREANEY-RAUCH-SILVERDALE	WHITE EARTH VOL.
HIDDEN VALLEY	WRIGHT VOL.