

# The Minnesota Utility Data Book

**A Reference guide to Minnesota  
electric and natural-gas utilities  
1965-2005**



MINNESOTA  
DEPARTMENT OF  
COMMERCE

<b>Introduction.....</b>	<b>2</b>
<b>Section I: Electric Utilities.....</b>	<b>3</b>
Overview.....	3
Introduction to Electric Tables.....	4
Table 1: Minnesota Historical Electric Consumption.....	6
Table 1A: Electric Consumption for Investor-Owned Utilities.....	7
Table 1B: Electric Consumption for Cooperative Utilities.....	8
Table 1C: Electric Consumption for Municipal Utilities.....	9
Table 2: Number of Minnesota Electric Customers.....	10
Table 2A: Number of Electric Customers for Investor-Owned Utilities.....	11
Table 2B: Number of Electric Customers for Cooperative Utilities.....	12
Table 2C: Number of Electric Customers for Municipal Utilities.....	13
Table 3: Minnesota Electric Sales Revenue.....	14
Table 3A: Electric Sales Revenue for Investor-Owned Utilities.....	15
Table 3B: Electric Sales Revenue for Cooperative Utilities.....	16
Table 3C: Electric Sales Revenue for Municipal Utilities.....	17
Table 4: Minnesota Electric Consumption by Utility.....	18
<i>2005 Electric Consumption for Investor-Owned Utilities (Megawatt-Hours)</i> .....	18
<i>2005 Electric Consumption for Cooperative Utilities (Megawatt-Hours)</i> .....	18
<i>2005 Minnesota Electric Consumption for Municipal Utilities</i> .....	21
Table 5: Number of Minnesota Electric Customers by Utility.....	25
<i>2005 Number of Minnesota Electric Customers for Investor-Owned Utilities</i> .....	25
<i>2005 Number of Minnesota Electric Customers for Cooperative Utilities</i> .....	25
<i>2005 Number of Minnesota Electric Customers for Municipal Utilities</i> .....	28
Table 6: Minnesota Electric Sales Revenue by Utility.....	32
<i>2005 Minnesota Electric Sales Revenue for Investor-Owned Utilities</i> .....	32
<i>2005 Minnesota Electric Sales Revenue for Cooperative Utilities</i> .....	32
<i>2005 Minnesota Electric Sales Revenue for Municipal Utilities</i> .....	35
Table 7: Minnesota Residential Electric Space Heating Customers.....	39
<i>2005 Minnesota Electric Space Heating Customers for Investor-Owned Utilities</i> .....	39
<i>2005 Minnesota Electric Space Heating Customers for Cooperative Utilities</i> .....	39
<i>2005 Minnesota Electric Space Heating Customers for Municipal Utilities</i> .....	42
Table 8: Minnesota Electric Consumption by County.....	46
Table 9: Utility-Owned Electric Generating Plants Serving Minnesota.....	48
Table 10: Net Generation and Fuel Consumption for Utility-Owned Electric Generating Plants Serving Minnesota.....	81

<b>Section II: Natural-Gas Utilities</b> .....	<b>120</b>
Overview .....	120
Introduction to Natural-Gas Tables .....	122
Table 11: Total Minnesota Historical Natural Gas Consumption .....	123
Table 12: Number of Minnesota Natural Gas Customers .....	125
Table 13: Minnesota Natural Gas Consumption by Company .....	126
Table 14: Minnesota Natural Gas Customers by Company .....	128
Table 15: Minnesota Natural Gas Revenue by Company .....	130
<b>Section III: Attachments</b> .....	<b>132</b>
General Notes on Data .....	132
Glossary of Terms and Abbreviations .....	133

## Introduction

The Minnesota Department of Commerce regulates the financial services industries and promotes and implements policies regarding energy and telecommunications. We work with other state agencies to provide education, information and programs to the public and work to enhance Minnesota's environment and quality of life. This report is one tool in that process.

The *Minnesota Utility Data Book* compiles information reported by electric and natural-gas utilities serving Minnesota. Most of Minnesota's energy use occurs through service provided by various investor-owned, cooperative and municipal and private utilities. To track energy trends, the Minnesota Department of Commerce uses data in its Regional Energy Information System (REIS), which contains information collected through Minnesota Rules parts 7610.0100 to 7610.1130.

The 2005 *Minnesota Utility Data Book* provides aggregate information reported by Minnesota utilities through 2005. It also provides data reported by individual companies for the year 2005.

The tables in this report may use certain assumptions that are not obvious to the reader. Where feasible, this report lists assumptions either at the bottom of relevant pages or in the General Notes on Data section.

Staff who prepared this report include Steve Loomis, Susan Medhaug, and Rochelle Barnhart. If you have any questions about the report, please contact Susan Medhaug at 651-297-2103.

We hope that the 2005 *Minnesota Utility Data Book* will promote discussion, inquiries and interest about energy consumed through Minnesota's natural-gas and electric utilities. To obtain this report in an alternative format (i.e., large print, Braille, CD-ROM), please see our website at <http://www.commerce.state.mn.us> or call our Energy Information Center at 651-296-5175. If you are outside the Twin Cities area, please dial 1-800-657-3710. Our TTY number is 651-297-3067. The Information Center may also be contacted through e-mail at: [energy.info@state.mn.us](mailto:energy.info@state.mn.us).

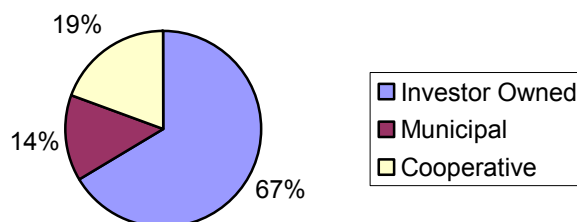
## Section I: Electric Utilities

### Overview

Minnesota's electric utilities are classified as investor-owned utilities (IOUs), cooperative utilities (co-ops), or municipal utilities (munis). The Minnesota Public Utilities Commission regulates the rates of all IOUs. Co-ops' and munis' rates are not regulated unless they choose such regulation. (Dakota Electric Association is the only utility that has chosen such regulation.)

As shown below, of the electricity sold to retail customers by electric utilities, most of Minnesota's electric consumers buy their electricity from IOUs. The remaining customers buy almost equally from co-ops and munis.

Figure 1: Minnesota Electric Consumption by Type of Utility



There are five investor-owned electric utilities serving customers in Minnesota. In 2005 there were five generation and transmission cooperatives, 47 distribution cooperatives and 126 municipal electric utilities serving customers in Minnesota.

## Introduction to Electric Tables

The tables in this section provide both aggregate and individual company information reported by electric utilities serving Minnesota. Tables 1 through 3 provide overall electric consumption, numbers of electric customers and electric revenues in Minnesota. These tables also show this information for the general types of companies: investor-owned utilities, cooperative utilities, and municipal utilities.

According to Table 1, 2005 electric consumption in the residential sector was higher than 2004 consumption. As Figure 2 indicates, when adjusted for weather, electric consumption per residential customer, though fairly steady in recent years, is showing a distinct upward trend.

Figure 2: Weather-Normalized Electric Use Per Residential Customer

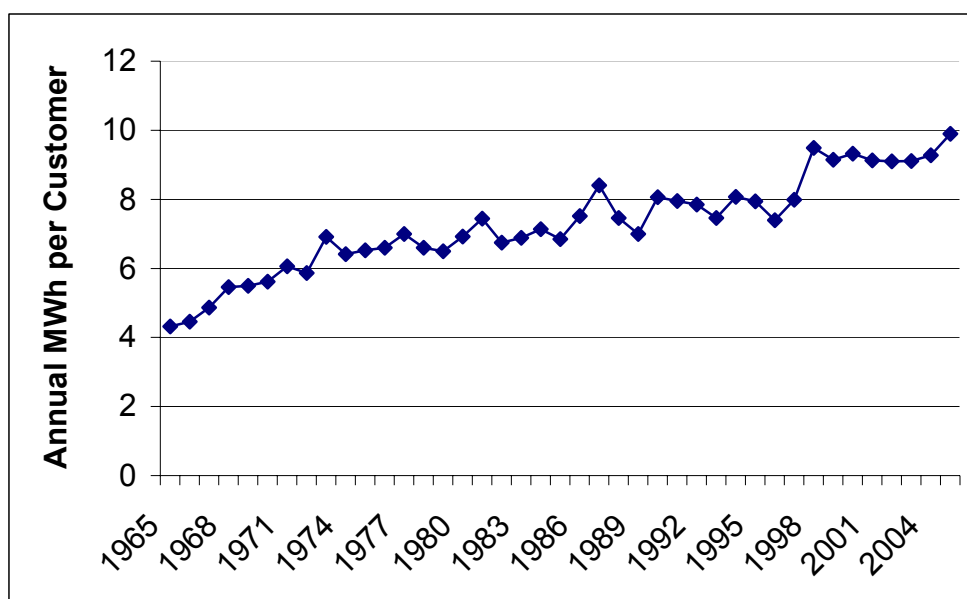


Table 4 through Table 7 provide 2005 electric consumption, numbers of electric customers, electric revenues, and data on residential space heating reported by each electric utility serving Minnesota. For companies that did not report data in 2005, the most recent data available was used.

Table 8 lists utility megawatt-hours sold at retail to Minnesota customers by county and provides each county's consumption and population rank (1 represents the highest total consumption/population and 87 represents the lowest).

Table 9 contains general descriptions of utility-owned generation plants serving Minnesota during the 2005 calendar year;

Table 10 provides net generation and fuel consumption for utility-owned generation plants producing energy during calendar year 2005 for the following utilities:

Adrian Public Utilities	Marshall Municipal Utilities
Alexandria Light & Power	Melrose Public Utilities
Alliant Energy-Interstate Power Co.	Minnesota Power
Austin Utilities	Minnkota Power Cooperative
Benson Municipal Utilities	Moorhead Public Service
Blooming Prairie Public Utilities	Moose Lake Water and Light
Blue Earth Light & Water	Mora Municipal Utilities
Dairyland Power Cooperative	New Prague Utilities Commission
Delano Municipal Utilities	New Ulm Public Utilities
Detroit Lakes Public Utilities	North Branch Water & Light
East Grand Forks	Otter Tail Power Company
Elk River Municipal Utilities	Princeton Public Utilities
Fairfax Public Utilities	Redwood Falls Public Utilities
Fairmont Public Utilities	Rochester Public Utilities
Glencoe Municipal Utilities	Roseau Municipal Water and Light
Grand Marais Utilities	St. James Municipal Light & Power
Granite Falls Municipal Utilities	Sleepy Eye Public Utilities
Great River Energy	Southern MN Municipal Power Agency
Halstad Municipal Utilities	Spring Valley Public Utilities
Hastings, City of	Springfield Public Utilities
Hawley Public Utilities	Steele Waseca Cooperative Electric
Hibbing Public Utilities	Thief River Falls Municipal Utility
Hutchinson Utilities	Truman Municipal Utility
Janesville Municipal Utilities	Two Harbors Water and Light
Kenyon Municipal Utilities	Virginia Public Utilities
Lake Crystal Municipal Utilities	Warren, City of
Lakefield Public Utilities	Wells Public Utilities
Lanesboro Public Utilities	Willmar Municipal Utilities
Litchfield Public Utilities	Windom Municipal Utilities
Madelia Municipal Light & Power	Worthington Public Utilities
	Xcel Energy

**Table 1: Minnesota Historical Electric Consumption**

Total Electric Consumption for Minnesota (Gigawatt-Hours)

Year	Farm	Non-Farm Residential	Commercial	Industrial	Total
1965	1,526	4,036	2,552	4,804	12,917
1967	1,710	4,632	3,005	6,157	15,503
1969	1,949	5,588	3,603	8,027	19,166
1971	2,250	6,381	4,185	9,201	22,017
1973	2,472	7,029	4,781	11,309	25,591
1975	2,891	7,651	5,028	11,281	26,852
1976	3,107	7,997	5,473	12,236	28,813
1977	3,452	7,855	5,524	12,562	29,393
1978	3,375	8,538	5,767	14,916	32,596
1979	3,527	8,777	6,004	16,217	34,524
1980	3,351	8,988	6,056	15,704	34,098
1981	3,294	8,910	6,094	16,142	34,439
1982	3,509	9,320	6,408	14,684	33,921
1983	3,447	9,676	6,599	16,046	35,769
1984	3,517	9,682	7,067	17,960	38,226
1985	3,502	9,908	7,290	17,886	38,586
1986	3,517	10,169	7,488	17,442	38,616
1987	3,397	10,490	7,863	18,919	40,669
1988	3,609	11,657	8,397	22,090	45,753
1989	3,689	11,265	9,293	22,619	46,866
1990	3,560	11,475	9,626	23,436	48,097
1991	3,380	12,436	9,048	23,951	48,815
1992	2,910	11,761	9,189	23,429	47,289
1993	2,962	12,583	9,270	24,288	49,104
1994	2,753	13,296	9,667	25,335	51,051
1995^	2,979	14,101	10,163	26,701	53,964
1996	3,148	14,152	10,883	27,046	55,229
1997	3,033	14,169	10,832	27,825	55,859
1998	2,911	14,584	11,098	28,382	56,975
1999	2,930	15,170	11,717	27,866	57,683
2000	2,956	15,738	12,224	29,043	59,962
2001**	2,995	16,446	20,675	20,396	60,511
2002	2,969	17,478	19,969	21,948	62,364
2003	2,868	17,777	19,849	22,146	62,641
2004	3,251	17,316	20,107	23,187	63,867
2005	3,025	18,744	21,638	23,161	66,567

**Table 1A: Electric Consumption for Investor-Owned Utilities**

## Electric Consumption (Gigawatt-Hours)

<b>Year</b>	<b>Farm</b>	<b>Non-Farm Residential</b>	<b>Commercial</b>	<b>Industrial</b>	<b>Total</b>
1965	207	3,076	1,734	4,360	9,378
1967	224	3,521	2,049	5,660	11,455
1969	238	4,236	2,469	7,392	14,335
1971	257	4,760	2,842	8,378	16,237
1973	267	5,156	3,178	10,318	18,920
1975	286	5,527	3,280	10,199	19,291
1976	294	5,709	3,548	11,046	20,597
1977	301	5,662	3,570	11,227	20,760
1978	298	5,881	3,726	13,487	23,391
1979	314	5,985	3,867	14,697	24,862
1980	317	6,085	3,961	14,120	24,482
1981	345	5,960	3,980	14,473	24,758
1982	361	6,208	4,244	12,915	23,728
1983	354	6,497	4,298	14,198	25,347
1984	358	6,464	4,550	16,053	27,425
1985	352	6,593	4,697	15,909	27,551
1986	350	6,777	4,804	15,298	27,229
1987	334	6,989	5,025	16,710	29,058
1988	347	7,786	5,365	19,664	33,162
1989	339	7,401	6,117	20,067	33,925
1990	344	7,445	6,257	20,818	34,864
1991	359	7,842	5,592	21,089	34,882
1992	116	7,442	5,712	20,425	33,695
1993	119	7,817	5,687	21,061	34,684
1994	77	8,065	5,952	21,886	35,981
1995	78	8,615	6,218	23,099	38,009
1996	78	8,520	6,811	23,231	38,640
1997	76	8,511	6,634	23,768	38,989
1998	74	8,764	6,699	23,993	39,531
1999	75	9,038	6,852	23,494	39,459
2000	74	9,372	7,279	24,270	40,995
2001*	76	9,654	15,516	15,598	40,843
2002	73	10,185	14,650	17,005	41,912
2003	108	10,210	14,479	16,978	41,774
2004	118	9,977	14,791	17,643	42,530
2005	121	10,615	16,228	17,259	44,223



**Table 1B: Electric Consumption for Cooperative Utilities**

Electric Consumption (Gigawatt-Hours)

<b>Year</b>	<b>Farm</b>	<b>Non-Farm Residential</b>	<b>Commercial</b>	<b>Industrial</b>	<b>Total</b>
1965	1,306	201	150	57	1,714
1967	1,473	259	177	74	1,983
1969	1,696	363	210	149	2,417
1971	1,976	490	264	200	2,930
1973	2,191	635	325	293	3,443
1975	2,590	759	363	338	4,049
1976	2,796	851	395	378	4,421
1977	3,134	722	402	437	4,694
1978	3,059	1,101	389	500	5,049
1979	3,193	1,203	400	563	5,359
1980	3,013	1,317	376	586	5,292
1981	2,927	1,384	392	629	5,332
1982	3,125	1,455	410	657	5,647
1983	3,070	1,474	498	625	5,667
1984	3,136	1,514	672	546	5,868
1985	3,129	1,588	713	556	5,986
1986	3,143	1,672	777	551	6,144
1987	3,040	1,723	844	588	6,196
1988	3,237	1,951	1,091	557	6,836
1989	3,326	1,951	1,173	587	7,036
1990	3,193	2,124	1,226	633	7,177
1991	3,002	2,577	1,298	712	7,590
1992	2,773	2,469	1,328	761	7,331
1993	2,807	2,810	1,419	823	7,859
1994	2,656	3,218	1,460	843	8,178
1995	2,879	3,350	1,609	898	8,736
1996	3,047	3,466	1,740	981	9,235
1997	2,936	3,502	1,821	1,062	9,320
1998	2,814	3,654	2,049	1,125	9,642
1999	2,832	3,896	2,280	1,119	10,127
2000	2,861	4,076	2,301	1,318	10,556
2001	2,900	4,391	2,432	1,346	11,069
2002	2,877	4,781	2,572	1,433	11,662
2003	2,909	4,878	2,614	1,587	11,988
2004	3,110	4,813	2,643	1,776	12,342
2005	2,883	5,429	2,667	1,957	12,937

**Table 1C: Electric Consumption for Municipal Utilities**

## Electric Consumption (Gigawatt-Hours)

Year	Farm	Non-Farm Residential	Commercial	Industrial	Total
1965	13	759	668	386	1,825
1967	13	852	778	423	2,065
1969	14	989	925	486	2,414
1971	17	1,130	1,080	623	2,849
1973	14	1,238	1,278	699	3,228
1975	16	1,366	1,386	745	3,512
1976	17	1,437	1,530	812	3,796
1977	17	1,471	1,552	898	3,938
1978	19	1,556	1,652	930	4,157
1979	20	1,589	1,737	957	4,303
1980	21	1,586	1,719	998	4,324
1981	22	1,566	1,722	1,040	4,350
1982	23	1,658	1,754	1,113	4,547
1983	23	1,705	1,803	1,224	4,755
1984	23	1,704	1,845	1,361	4,932
1985	22	1,727	1,880	1,421	5,049
1986	23	1,719	1,907	1,593	5,243
1987	23	1,778	1,993	1,621	5,415
1988	24	1,920	1,941	1,869	5,755
1989	23	1,914	2,003	1,965	5,905
1990	23	1,906	2,143	1,984	6,056
1991	20	2,016	2,158	2,150	6,344
1992	21	1,850	2,148	2,244	6,263
1993	37	1,956	2,164	2,404	6,561
1994	20	2,013	2,254	2,606	6,893
1995^	23	2,136	2,336	2,705	7,219
1996	22	2,166	2,331	2,834	7,353
1997	22	2,157	2,376	2,995	7,550
1998	22	2,165	2,349	3,265	7,802
1999	23	2,237	2,585	3,253	8,097
2000	21	2,291	2,644	3,455	8,410
2001	20	2,401	2,727	3,451	8,599
2002	20	2,513	2,747	3,509	8,789
2003	21	2,536	2,778	3,582	8,915
2004	23	2,526	2,674	3,768	8,995
2005	21	2,700	2,743	3,944	9,408

Notes for Table 1 through 1C

^For 1995, Barnesville Municipal Electric reported total consumption, not consumption by customer class.

\*\*Xcel Energy redefined its commercial and industrial customer classifications in 2001. Commercial = Small Commercial and Industrial requiring less than 1000 kW. Industrial = Large Commercial and Industrial requiring at least 1000 kW.

**Table 2: Number of Minnesota Electric Customers**

## Total Number of Electric Customers for All Minnesota Utilities

Year	Farm	Non-Farm Residential	Commercial	Industrial	Total
1965	182,634	907,946	126,583	6,296	1,223,459
1967	183,968	945,521	128,114	6,295	1,263,898
1969	188,194	994,230	128,791	6,390	1,317,605
1971	193,405	1,041,982	132,487	6,592	1,374,466
1973	199,334	1,100,014	137,467	6,711	1,443,526
1975	210,508	1,143,377	140,298	7,050	1,501,234
1976	214,495	1,168,812	143,221	7,153	1,533,769
1977	245,769	1,165,178	152,962	7,286	1,571,195
1978	227,972	1,223,595	154,089	7,720	1,613,365
1979	223,361	1,265,978	157,247	7,630	1,654,216
1980	213,669	1,300,534	159,499	7,938	1,681,640
1981	214,173	1,323,682	162,882	8,280	1,709,017
1982	216,228	1,336,314	164,789	8,509	1,725,840
1983	217,479	1,361,892	168,586	8,316	1,756,273
1984	218,519	1,385,883	173,001	8,171	1,785,574
1985	217,688	1,402,671	175,653	8,243	1,804,255
1986	219,261	1,429,570	182,959	9,773	1,841,563
1987	220,058	1,469,279	183,175	8,778	1,881,290
1988	221,326	1,505,857	185,693	8,956	1,921,832
1989	227,254	1,520,556	186,773	9,337	1,943,922
1990	226,962	1,546,818	190,508	9,973	1,974,261
1991	192,976	1,591,515	197,845	9,400	1,991,736
1992	177,054	1,616,882	196,290	14,235	2,004,462
1993	170,848	1,650,291	198,256	14,073	2,033,464
1994	154,529	1,701,134	203,786	13,680	2,073,129
1995	165,961	1,732,544	210,695	10,016	2,119,216
1996	174,090	1,747,628	217,803	10,125	2,149,646
1997	173,001	1,788,247	217,731	10,949	2,189,927
1998	173,891	1,814,547	221,844	11,875	2,222,159
1999	169,327	1,853,118	230,521	12,479	2,265,444
2000	171,664	1,877,092	230,334	11,524	2,290,611
2001*	163,043	1,921,332	244,987	5,208	2,334,570
2002	160,310	1,966,536	250,730	5,311	2,382,887
2003	165,383	1,997,741	253,769	6,026	2,422,938
2004	202,926	2,006,585	257,462	7,800	2,474,769
2005	159,956	2,060,519	253,807	7,634	2,481,916

**Table 2A: Number of Electric Customers for Investor-Owned Utilities**

<b>Year</b>	<b>Farm</b>	<b>Non-Farm Residential</b>	<b>Commercial</b>	<b>Industrial</b>	<b>Total</b>
1965	20,362	673,394	85,140	3,492	782,388
1967	19,682	699,106	84,826	3,650	807,264
1969	18,592	731,149	86,287	3,804	839,832
1971	17,678	759,814	88,277	3,921	869,690
1973	17,055	792,467	90,449	4,147	904,118
1975	16,532	818,759	92,216	4,301	931,808
1976	16,226	832,472	93,619	4,213	946,530
1977	17,108	840,143	102,756	4,475	964,482
1978	16,287	860,957	104,535	4,619	986,398
1979	16,240	882,200	106,274	4,899	1,009,613
1980	16,283	897,461	108,124	5,074	1,026,942
1981	17,388	908,504	110,114	5,123	1,041,129
1982	17,318	915,153	111,468	5,219	1,049,158
1983	17,431	930,135	114,321	5,213	1,067,100
1984	17,223	946,476	116,833	5,347	1,085,879
1985	16,204	953,019	118,113	5,427	1,092,763
1986	16,169	972,878	120,116	5,799	1,114,962
1987	15,867	993,950	123,638	5,970	1,139,425
1988	15,928	1,018,232	125,431	6,239	1,165,830
1989	15,844	1,024,483	125,126	6,496	1,171,949
1990	15,793	1,037,478	128,479	6,911	1,188,661
1991	7,466	1,049,354	131,660	6,776	1,195,256
1992	5,749	1,068,031	128,506	10,701	1,212,987
1993	5,699	1,074,498	129,250	10,928	1,220,375
1994	5,943	1,089,167	132,515	11,034	1,238,659
1995	6,047	1,104,346	137,574	7,322	1,255,289
1996	6,021	1,112,703	141,579	7,353	1,267,656
1997	5,992	1,139,620	140,953	8,073	1,294,638
1998	6,058	1,151,585	143,660	8,529	1,309,832
1999	6,113	1,165,707	152,742	9,036	1,333,598
2000	5,758	1,178,863	145,286	8,122	1,338,029
2001*	6,018	1,195,910	157,203	1,780	1,360,911
2002	2,981	1,222,164	162,223	1,789	1,389,157
2003	4,376	1,235,558	161,518	2,036	1,403,488
2004	5,098	1,255,489	165,030	2,036	1,427,653
2005	5,043	1,243,196	162,502	1,948	1,412,689

**Table 2B: Number of Electric Customers for Cooperative Utilities**

Year	Farm	Non-Farm Residential	Commercial	Industrial	Total
1965	159,424	73,667	14,403	497	247,991
1967	161,400	80,886	15,138	594	258,018
1969	166,741	91,890	14,218	704	273,553
1971	172,487	106,291	15,319	861	294,958
1973	179,475	123,780	16,516	1,011	320,782
1975	191,235	132,547	17,274	1,239	342,295
1976	197,093	138,870	17,616	1,725	355,304
1977	227,390	122,558	17,846	1,427	369,221
1978	210,382	155,397	15,684	1,808	383,270
1979	205,797	170,926	16,793	1,566	395,082
1980	196,289	189,164	17,628	1,747	404,828
1981	195,677	198,501	18,147	1,988	414,313
1982	197,569	203,107	18,549	1,982	421,207
1983	198,731	210,087	19,367	1,690	429,875
1984	199,924	215,399	20,463	1,272	437,058
1985	200,170	223,644	21,607	1,256	446,677
1986	201,664	233,389	22,282	1,435	458,770
1987	202,725	244,405	23,306	1,219	471,655
1988	203,806	253,648	23,591	996	482,041
1989	209,822	259,124	24,233	1,046	494,225
1990	209,533	270,282	24,590	1,105	505,510
1991	184,694	299,541	28,816	951	514,002
1992	169,765	308,760	29,613	1,390	509,528
1993	161,521	335,390	30,426	1,247	528,584
1994	147,083	358,789	31,204	699	537,775
1995	158,373	371,121	33,094	723	563,311
1996	166,538	374,086	34,234	724	575,582
1997	165,478	385,524	36,117	774	587,893
1998	166,291	397,550	37,329	771	601,943
1999	161,526	418,559	36,443	805	617,333
2000	164,465	425,666	42,115	825	633,071
2001	155,624	446,451	44,393	732	647,200
2002	155,974	461,986	45,386	728	664,074
2003	159,609	474,179	47,404	1,151	682,343
2004	196,423	458,655	46,751	2,621	704,450
2005	153,483	517,433	44,877	2,672	718,465

**Table 2C: Number of Electric Customers for Municipal Utilities**

Year	Farm	Non-Farm Residential	Commercial	Industrial	Total
1965	2,848	160,885	27,040	2,300	193,073
1967	2,886	165,529	28,149	2,044	198,608
1969	2,861	171,191	28,285	1,875	204,212
1971	3,240	175,877	28,890	1,803	209,810
1973	2,804	183,767	30,501	1,546	218,618
1975	2,741	192,071	30,807	1,503	227,123
1976	1,176	197,470	31,985	1,208	231,927
1977	1,271	202,477	32,359	1,377	237,484
1978	1,303	207,241	33,869	1,286	243,689
1979	1,324	212,852	34,179	1,158	249,513
1980	1,097	213,909	33,746	1,111	249,863
1981	1,108	216,677	34,620	1,163	253,568
1982	1,341	218,054	34,771	1,301	255,467
1983	1,317	221,670	34,897	1,404	259,288
1984	1,372	224,008	35,704	1,543	262,627
1985	1,314	226,008	35,932	1,551	264,805
1986	1,428	223,303	40,560	2,530	267,821
1987	1,466	230,924	36,230	1,580	270,200
1988	1,592	233,977	36,670	1,712	273,951
1989	1,588	236,949	37,413	1,786	277,738
1990	1,636	239,058	37,438	1,948	280,080
1991	816	242,620	37,368	1,664	282,468
1992	1,540	240,091	38,168	2,137	281,937
1993	3,628	240,403	38,578	1,894	284,499
1994	1,503	253,178	40,067	1,943	296,691
1995	1,541	257,077	40,026	1,968	300,612
1996	1,531	260,839	41,990	2,048	306,408
1997	1,531	263,103	40,657	2,093	307,383
1998	1,542	265,412	40,853	2,567	310,374
1999	1,688	268,852	41,331	2,630	314,500
2000	1,441	272,563	42,933	2,577	319,511
2001	1,401	278,971	43,391	2,696	326,459
2002	1,355	282,386	43,121	2,794	329,656
2003	1,398	288,004	44,847	2,839	337,107
2004	1,405	292,441	45,681	3,143	342,666
2005	1,430	299,890	46,428	3,014	350,762

Note for Table 2 through 2C

\*Xcel Energy redefined its commercial and industrial customer classifications in 2001.

Commercial = Small Commercial and Industrial requiring less than 1000 kW.

Industrial = Large Commercial and Industrial requiring at least 1000 kW.

**Table 3: Minnesota Electric Sales Revenue**

Total Electric Sales Revenue for Minnesota (\$1,000)

<b>Year</b>	<b>Farm</b>	<b>Non-Farm Residential</b>	<b>Commercial</b>	<b>Industrial</b>	<b>Total</b>
1984	232,027	611,797	390,742	786,113	2,020,679
1985	236,127	631,401	409,851	791,767	2,069,146
1986	237,084	650,794	460,137	779,793	2,127,808
1987	235,338	683,285	454,258	846,161	2,219,041
1988	244,458	785,261	500,716	924,932	2,455,367
1989	246,765	754,543	533,586	926,797	2,461,692
1990	243,489	805,504	572,487	1,005,617	2,627,096
1991	229,340	860,661	548,827	1,019,014	2,657,842
1992	196,865	791,726	536,962	994,308	2,519,861
1993	190,991	892,646	566,233	1,069,229	2,719,098
1994	185,170	955,753	601,097	1,105,409	2,848,923
1995	197,573	1,030,079	634,946	1,153,268	3,015,867
1996	204,889	1,031,011	668,436	1,156,750	3,061,085
1997	199,101	1,046,107	676,971	1,207,639	3,129,818
1998	195,014	1,083,805	698,625	1,266,957	3,244,402
1999	195,866	1,141,166	737,432	1,275,500	3,349,963
2000	203,207	1,197,915	778,742	1,322,920	3,502,784
2001*	206,953	1,268,771	1,250,166	933,914	3,659,804
2002	215,701	1,315,785	1,186,304	922,033	3,639,822
2003	220,125	1,363,179	1,223,555	974,907	3,781,163
2004	231,918	1,394,390	1,264,713	1,076,959	3,970,234
2005	233,169	1,564,770	1,461,450	1,130,853	4,392,460

**Table 3A: Electric Sales Revenue for Investor-Owned Utilities**

Electric Sales Revenue (\$1,000)

<b>Year</b>	<b>Farm</b>	<b>Non-Farm Residential</b>	<b>Commercial</b>	<b>Industrial</b>	<b>Total</b>
1984	20,009	398,105	250,782	687,480	1,356,377
1985	20,727	407,556	257,782	690,248	1,376,313
1986	20,825	423,028	304,285	673,289	1,421,426
1987	19,660	442,578	286,873	740,501	1,489,613
1988	20,878	514,687	315,582	808,983	1,660,130
1989	19,912	480,220	337,250	801,167	1,638,549
1990	22,370	518,143	367,859	874,366	1,782,738
1991	23,072	533,082	337,806	874,923	1,768,884
1992	7,082	504,114	340,177	855,644	1,707,017
1993	7,311	558,342	353,902	915,252	1,834,806
1994	5,073	583,344	371,386	938,232	1,898,036
1995	5,200	641,934	393,842	982,290	2,023,264
1996	5,489	638,779	422,022	977,195	2,043,486
1997	5,645	653,611	423,229	1,022,192	2,104,678
1998	5,600	677,718	431,912	1,064,415	2,179,645
1999	5,528	707,299	445,387	1,074,562	2,232,775
2000	5,630	729,660	471,002	1,098,337	2,304,628
2001*	5,951	763,300	923,252	703,791	2,396,294
2002	5,995	770,046	846,702	687,852	2,310,596
2003	8,019	788,096	869,130	724,342	2,389,588
2004	9,107	792,583	910,181	790,697	2,502,569
2005	6,929	854,294	1,064,233	748,199	2,673,655



**Table 3B: Electric Sales Revenue for Cooperative Utilities**

Electric Sales Revenue (\$1,000)

<b>Year</b>	<b>Farm</b>	<b>Non-Farm Residential</b>	<b>Commercial</b>	<b>Industrial</b>	<b>Total</b>
1984	210,781	128,567	48,928	35,715	423,991
1985	213,724	131,323	52,551	34,480	432,078
1986	214,988	137,223	56,345	33,589	442,145
1987	214,416	144,954	62,458	33,937	455,765
1988	222,219	162,697	77,217	32,587	494,720
1989	225,500	164,166	81,842	33,791	505,299
1990	219,750	174,661	83,194	35,912	513,518
1991	205,144	208,957	88,184	40,079	542,364
1992	188,393	187,884	86,127	41,610	504,014
1993	181,233	221,491	90,721	44,875	538,320
1994	178,644	245,366	93,880	42,452	560,342
1995	190,740	253,351	100,634	43,430	588,154
1996	197,823	256,263	106,434	44,613	605,133
1997	191,918	255,834	110,557	46,797	605,106
1998	187,887	266,397	122,436	50,759	627,479
1999	188,579	288,666	137,147	48,039	662,432
2000	196,099	313,456	143,050	58,110	710,714
2001	199,569	340,202	154,074	59,160	753,006
2002	208,224	371,741	166,143	63,052	809,160
2003	210,509	393,194	171,787	71,928	847,414
2004	221,083	418,354	176,218	89,270	904,926
2005	221,536	467,141	180,506	101,451	970,633

**Table 3C: Electric Sales Revenue for Municipal Utilities**

Electric Sales Revenue (\$1,000)

Year	Farm	Non-Farm Residential	Commercial	Industrial	Total
1984	1,236	85,125	91,032	62,918	240,311
1985	1,676	92,521	99,519	67,039	260,755
1986	1,271	90,542	99,508	72,915	264,236
1987	1,262	95,752	104,928	71,722	273,664
1988	1,360	107,877	107,917	83,363	300,518
1989	1,353	110,158	114,493	91,839	317,843
1990	1,369	112,699	121,433	95,338	330,840
1991	1,123	118,622	122,838	104,012	346,594
1992	1,390	99,728	110,658	97,054	308,830
1993	2,448	112,813	121,610	109,101	345,972
1994	1,453	127,043	135,832	124,726	390,545
1995	1,633	134,795	140,471	127,549	404,448
1996	1,577	135,969	139,980	134,942	412,467
1997	1,538	136,662	143,185	138,650	420,035
1998	1,527	139,690	144,278	151,783	437,277
1999	1,597	145,363	154,897	152,899	454,756
2000	1,479	154,799	164,690	166,473	487,441
2001	1,433	165,269	172,839	170,963	510,505
2002	1,482	173,997	173,459	171,128	520,066
2003	1,598	181,888	182,638	178,638	544,161
2004	1,728	183,452	178,313	196,992	562,739
2005	2,245	204,845	192,531	218,771	620,611

Note for Table 3 through 3C

\*Xcel Energy redefined its commercial and industrial customer classifications in 2001.

Commercial = Small Commercial and Industrial requiring less than 1000 kW.

Industrial = Large Commercial and Industrial requiring at least 1000 kW.

**Table 4: Minnesota Electric Consumption by Utility**

## 2005 Electric Consumption for Investor-Owned Utilities (Megawatt-Hours)

2005	Farm	Non-Farm Residential	Commercial	Industrial	Total
Alliant Energy-Interstate Power Co	36,877	281,115	182,103	335,488	835,583
Minnesota Power	44,639	968,517	1,277,117	6,761,669	9,051,942
Northwestern Wisconsin Elec Co	172	165	190	0	527
Otter Tail Power Co	38,904	523,649	286,226	1,168,199	2,016,978
Xcel Energy	0	8,841,946	14,482,254	8,993,804	32,318,004
<b>Total: Investor-Owned Utilities</b>	<b>120,592</b>	<b>10,615,392</b>	<b>16,227,890</b>	<b>17,259,160</b>	<b>44,223,034</b>

## 2005 Electric Consumption for Cooperative Utilities (Megawatt-Hours)

2005	Farm	Non-Farm Residential	Commercial	Industrial	Total
<b>Dairyland Power Cooperative</b>					
Heartland Power Cooperative	915	0	0	0	915
Freeborn Mower Coop Svcs	0	104,848	28,588	49,776	183,212
Peoples Coop Power Assoc., Inc.	50,340	147,055	32,920	0	230,315
Tri-Co Electric Coop	170,635	1,881	37,978	44,986	255,480
<b>Total: Dairyland Power Cooperative</b>	<b>221,890</b>	<b>253,784</b>	<b>99,486</b>	<b>94,762</b>	<b>669,922</b>
<b>East River Electric Cooperative</b>					
H-D Electric Coop, Inc.	89	92	0	0	181
Lyon-Lincoln Elec Coop	55,260	8,846	*	*	80,449
Renville Sibley Coop Power Assn	44,045	3,675	2,180	101,201	151,101
Traverse Electric Coop	28,000	1,195	*	*	38,195
<b>Total: East River Electric Cooperative</b>	<b>127,394</b>	<b>13,808</b>	<b>24,012</b>	<b>104,712</b>	<b>269,926</b>

2005 Electric Consumption for Cooperative Utilities, Continued

2005	Farm	Non-Farm Residential	Commercial	Industrial	Total
<b>Great River Energy</b>					
Agralite Cooperative	87,331	0	29,705	53,115	170,151
Arrowhead Electric Coop**	0	36,066	23,253	0	59,319
BENCO Electric Coop	81,787	85,161	89,480	0	256,428
Connexus Energy	7,988	1,145,680	664,655	121,961	1,940,284
Brown Co Rural Elec Assn	64,826	1,412	16,373	31,940	114,551
Coop Lt&Pwr Assoc of Lake Co	0	45,757	*	*	85,498
Crow Wing Coop Pwr&Light	51,600	315,746	127,982	0	495,328
Dakota Electric Assn	9,885	930,505	62,921	791,563	1,794,874
East Central Energy	3,343	490,578	235,498	114,731	844,150
Federated Rural Elec Assn	81,415	4,608	37,567	43,827	167,417
Goodhue Co Coop Elec Assn	50,532	28,359	3,229	1,115	83,235
Itasca-Mantrap Coop Elec	15,856	96,617	*	*	192,246
Kandiyohi Power Coop	36,241	63,369	32,893	3,267	135,770
Lake Country Power	0	425,811	130,021	70,658	626,490
Lake Region Coop Elec Assc	121,955	162,707	48,800	4,001	337,463
McLeod Coop Power Assn	104,879	0	12,063	44,438	161,380
Meeker Coop Light&Power Assn	61,765	58,907	25,177	0	145,849
Mille Lacs Elec Coop	173	107,298	47,432	26,339	181,242
Minnesota Valley Elec Coop	0	367,542	235,766	0	603,308
Nobles Coop Electric	87,877	885	17,551	38,204	144,517
North Itasca Elec Coop	0	35,083	*	*	45,944
Redwood Elec Coop	46,666	0	7,286	0	53,952
Runestone Elec Assn	72,215	93,034	21,356	12,211	198,816
South Central Elec Assn	68,732	0	30,414	63,722	162,868
Stearns Coop Elec Assn	131,462	189,249	62,547	20,263	403,521
Steele Waseca Coop Elec	111,238	1,751	34,705	64,970	212,664
Todd Wadena Elec Coop	116,509	3,077	25,263	5,394	150,243
Wright Hennepin Coop Elec Assn	48,814	381,234	235,607	68,717	734,372
<b>Total: Great River Energy</b>	<b>1,463,089</b>	<b>5,070,436</b>	<b>2,311,024</b>	<b>1,657,331</b>	<b>10,501,880</b>

2005 Electric Consumption for Cooperative Utilities, Continued

2005	Farm	Non-Farm Residential	Commercial	Industrial	Total
<b>Minnkota Power Cooperative</b>					
Beltrami Electric Coop	278,099	3,242	67,694	0	349,035
Clearwater-Polk Elec Coop	0	61,088	10,207	0	71,295
North Star Electric Coop	75,368	2,659	35,850	0	113,877
PKM Electric Cooperative, Inc	68,740	0	21,177	0	89,917
Red Lake Electric Coop	94,872	0	*	*	116,805
Red River Valley Coop Power	93,799	0	24,430	0	118,229
Roseau Electric Coop	110,660	4,140	15,720	30,500	161,020
Wild Rice Elec Coop**	191,410	2,470	*	*	227,200
<b>Total: MPC - Cooperative</b>	<b>912,948</b>	<b>73,599</b>	<b>211,907</b>	<b>48,924</b>	<b>1,247,378</b>
<b>Other Cooperatives</b>					
Iowa Lakes Electric Cooperative	0	237	89	0	326
Minnesota Valley Coop Lt&Pwr	98,194	14,646	18,051	25,380	156,271
Sioux Valley Southwestern	59,787	2,545	2,391	26,211	90,934
<b>Total: Other Cooperatives</b>	<b>157,981</b>	<b>17,428</b>	<b>20,531</b>	<b>51,591</b>	<b>247,531</b>
<b>Total: Cooperatives</b>	<b>2,883,302</b>	<b>5,429,055</b>	<b>2,666,960</b>	<b>1,957,320</b>	<b>12,936,637</b>

2005 Minnesota Electric Consumption for Municipal Utilities

2005	Farm	Non-Farm Residential	Commercial	Industrial	Total
<b>Central Minnesota Municipal Power Agency</b>					
Blue Earth Light & Water	0	14,061	6,773	36,280	57,114
Delano Municipal Utilities	0	15,585	4,603	26,746	46,934
Fairfax Public Utilities	61	6,332	3,880	2,036	12,309
Glencoe Municipal Utilities	0	21,903	28,965	20,216	71,084
Granite Falls Municipal Utilities	0	12,699	14,731	2,231	29,661
Janesville Municipal Utilities	0	7,381	4,188	0	11,569
Kasson City Of	0	18,282	11,930	0	30,212
Kenyon Municipal Utilities	0	6,441	3,366	7,505	17,313
Lake Crystal Municipal	204	8,620	8,152	0	16,976
Madelia Municipal Light & Power	0	7,708	10,456	10,393	28,557
Mountain Lake Mun Utilities	1,324	7,907	5,041	9,761	24,033
New Ulm Pub Utilities	0	45,655	76,232	77,581	199,468
Sleepy Eye Pub Utilities	0	13,710	14,036	17,636	45,382
Springfield Pub Utilities	0	8,094	3,739	13,856	25,689
Truman Municipal Utility^	765	5,832	6,964	0	13,561
Windom Municipal Utilities	0	19,136	16,536	31,938	67,610
<b>Total: CMMPA</b>					
<b>Heartland Consumers Power District</b>					
Marshall Municipal Utilities	0	60,287	36,095	495,112	591,494
Tyler Municipal Light & Power	205	8,114	1,952	0	10,271
<b>Total: Heartland</b>	<b>205</b>	<b>68,401</b>	<b>38,047</b>	<b>495,112</b>	<b>601,765</b>
<b>Minnesota Municipal Power Agency</b>					
Anoka City Of	0	79,324	87,893	98,114	265,331
Arlington City Of^^	0	7,783	9,812	0	17,595
Brownton Mun Light & Power	0	3,630	1,059	230	4,919
City of Chaska-Utility Dept.	0	73,421	19,355	193,934	286,710
Le Sueur Municipal Utilities	392	12,975	12,175	78,232	103,774
North St Paul City Of	0	44,195	33,252	0	77,447
Olivia City Of^^	0	11,722	7,357	10,998	30,077
Shakopee Public Utilities	813	132,389	14,764	223,403	371,369
Winthrop City Of	192	5,447	4,638	3,770	14,047
<b>Total: MMPA</b>	<b>1,397</b>	<b>370,886</b>	<b>190,305</b>	<b>608,681</b>	<b>1,171,269</b>

2005 Minnesota Electric Consumption for Municipal Utilities, Continued

2005	Farm	Non-Farm Residential	Commercial	Industrial	Total
<b>Missouri River Energy Services</b>					
Adrian Public Utilities	*	6,395	6,025	*	12,871
Alexandria Light & Power	0	68,944	39,884	150,924	259,752
Barnesville Municipal Electric	94	14,252	3,334	2,475	20,155
Benson Municipal Utilities	167	14,758	7,327	12,844	35,096
Breckenridge Pub Utilities	0	19,318	10,593	10,060	39,971
Detroit Lakes Pub Utilities	0	59,473	30,719	79,109	169,301
Elbow Lake Municipal Elec**	0	5,750	8,910	221	14,881
Henning Electric Dept	0	4,851	3,991	0	8,842
Jackson Elec Light & Power	0	13,779	6,016	27,397	47,192
Lake Park Pub Utilities	0	3,970	3,117	0	7,087
Lakefield Pub Utilities	15	7,839	6,647	0	14,501
Luverne Public Utilities	127	21,235	10,606	42,626	74,594
Madison Municipal Utilities^^	0	8,729	7,525	1,887	18,141
Moorhead Pub Service	0	148,801	39,576	208,732	397,109
Ortonville City Of	0	12,743	14,783	0	27,526
St. James City of	*	19,005	28,938	*	66,379
Sauk Centre Public Utilities	0	18,470	12,146	28,101	58,717
Staples City of	0	9,434	6,259	5,724	21,417
Wadena Light & Water	0	22,364	6,961	37,130	66,455
Westbrook Mun Light & Power	241	4,124	1,772	1,498	7,635
Worthington Municipal Power	0	35,950	61,939	89,007	186,896
<b>Total: MRES</b>	<b>702</b>	<b>520,184</b>	<b>317,068</b>	<b>716,564</b>	<b>1,554,518</b>
<b>Northern Municipal Power Agency</b>					
Bagley Pub Utility	0	7,554	5,232	13,773	26,559
Baudette City Of	0	4,792	*	*	22,406
Fosston Municipal Utility	0	10,275	*	*	33,554
Halstad Municipal Utilities	0	4,573	4,605	0	9,178
Hawley Pub Utilities	0	10,505	8,050	0	18,555
Roseau Mun Water & Light	0	15,379	26,212	0	41,591
Stephen Electric Dept	0	4,047	4,861	0	8,908
Thief River Falls Mun Utilities	0	45,748	55,023	37,875	138,646
Warren City Of^^	0	8,178	9,792	0	17,970
Warroad Mun Light & Power	0	8,754	14,242	33,879	56,875
<b>Total: NMPA</b>	<b>0</b>	<b>119,805</b>	<b>153,459</b>	<b>100,978</b>	<b>374,242</b>

2005 Minnesota Electric Consumption for Municipal Utilities, Continued

2005	Farm	Non-Farm Residential	Commercial	Industrial	Total
<b>Other Municipals</b>					
Ada Water & Light Dept	0	11,576	6,683	3,358	21,617
Aitkin Pub Utilities	0	13,646	6,954	15,102	35,702
Alpha City of	221	630	596	0	1,447
Alvarado Electric Dept	675	2,206	718	0	3,600
Bigelow City of	560	805	263	1,144	2,772
Biwabik Water Light & Power	0	3,800	3,600	0	7,400
Brainerd Public Utilities	0	48,330	79,889	106,546	234,765
Brewster Elec Light & Power	54	2,195	770	1,180	4,199
Buffalo City Of	20	36,386	54,338	10,571	101,315
Buhl Pub Utilities	0	3,428	3,007		6,435
Caledonia Mun Light & Power	103	10,274	4,423	11,645	26,445
Ceylon Public Utilities	0	1,896	892	0	2,788
Darwin Electric Dept	0	2,011	286	0	2,297
Dundee Electric Utility	0	404	376	0	780
Dunnell Electric Department	0	706	718	0	1,424
East Grand Forks Water&Light	0	35,491	33,941	69,684	139,116
Eitzen Public Utilities	0	1,906	65	70	2,041
Elk River Municipal Utilities	203	71,382	21,916	89,014	182,515
Ely Water & Light Dept	0	13,337	20,499	0	33,836
Gilbert Water & Light	0	5,838	4,372	0	10,210
Grand Rapids Pub Utilities	0	45,555	*	*	157,607
Grove City Electric Dept	403	3,700	4,266	0	8,369
Harmony Electric Dept	0	4,187	4,548	871	9,606
Hibbing Public Utilities	0	49,394	59,108	15,518	124,020
Hutchinson Utilities	0	52,511	18,863	230,009	301,383
Kandiyohi Municipal Utilities^^	0	3,662	920	0	4,582
Kasota Electric Light	0	3,700	0	0	3,700
Keewatin Public Utilities	0	5,718	578	0	6,296
Lanesboro Public Utilities	0	3,007	3,620	0	6,627
Mabel City of	0	2,518	2,842	0	5,360
Melrose Public Utilities	2,599	18,058	19,960	68,801	109,418
Moose Lake Water & Light	0	5,245	12,973	10,575	28,793
Mountain Iron Water & Light	0	10,003	7,448	1,426	18,877
Nashwauk Pub Utilities	0	4,045	4,177	0	8,222
Newfolden Electric	0	2,117	2,707	0	4,824
Nielsen Vlg Light System	0	443	223	0	666
Peterson Public Utilities	0	1,375	0	0	1,375
Pierz Utilities**	0	3,447	4,943	0	8,390



2005 Minnesota Electric Consumption for Municipal Utilities, Continued

2005	Farm	Non-Farm Residential	Commercial	Industrial	Total
<b>Other Municipals (continued)</b>					
Proctor Pub Utilities	0	11,644	*	*	23,358
Randall City of	0	3,167	1,910	30	5,107
Round Lake Electric Dept	0	1,827	788	5,036	7,651
Rushford City of	0	7,260	3,427	5,121	15,808
Rushmore City of	0	318	1,599	0	1,917
Shelly Municipal Light Dept.	0	1,652	762	0	2,414
Spring Grove Mun Electric	249	4,286	4,830	7,317	16,682
St Charles Light & Water	0	11,965	5,660	11,303	28,928
Two Harbors Water & Light	0	11,010	5,224	13,533	29,767
Virginia Pub Utilities	0	34,519	72,947	0	107,466
Whalan City of	0	268	78	0	346
Willmar Municipal Utilities	0	68,826	90,376	122,958	282,160
<b>Total: Other Municipals</b>	<b>5,087</b>	<b>641,674</b>	<b>684,705</b>	<b>818,956</b>	<b>2,150,423</b>
<b>Southern Minnesota Municipal Power Agency</b>					
Austin Utilities	6,075	74,596	*	*	323,611
Bloomington Prairie Utilities	0	6,976	16,808	0	23,784
Fairmont Pub Utilities	3,691	40,895	51,416	55,262	151,264
Grand Marais Utilities	0	7,532	13,826	0	21,358
Lake City Utility Board	662	19,758	17,799	101,298	139,517
Litchfield Pub Utilities	376	34,748	39,686	47,916	122,726
Mora Municipal Electric Utility	0	12,331	8,539	34,912	55,782
New Prague Municipal Utilities	0	16,392	*	*	58,253
North Branch Mun Water & Light	0	11,966	12,926	4,827	29,719
Owatonna Public Utilities	0	83,334	87,440	198,921	369,695
Preston Public Utilities	123	5,532	3,717	3,327	12,699
Princeton Pub Utilities	0	16,297	14,093	18,055	48,445
Redwood Falls Pub Utilities	0	30,967	20,712	24,188	75,867
Rochester Pub Utilities	0	327,162	625,038	286,246	1,238,446
Spring Valley Pub Utility	0	8,876	10,846	0	19,722
St Peter Municipal Utilities	0	27,843	37,355	24,637	89,835
Waseca Utility	0	25,426	34,404	0	59,830
Wells Public Utilities	0	8,672	8,682	0	17,354
<b>Total: SMMPA</b>	<b>10,927</b>	<b>759,303</b>	<b>1,140,058</b>	<b>947,619</b>	<b>2,857,907</b>
<b>Total: Municipal Utilities</b>	<b>20,672</b>	<b>2,699,599</b>	<b>2,743,234</b>	<b>3,944,089</b>	<b>9,407,595</b>
<b>Total: Minnesota</b>	<b>3,024,566</b>	<b>18,744,046</b>	<b>21,638,084</b>	<b>23,160,569</b>	<b>66,567,266</b>

Notes for Table 4

\* Withheld to avoid disclosure of individual company data. Data included in totals.

\*\* 2005 data not submitted. Data is from 2004.

^ Data is from 2002. ^^ Data is from 2003.

**Table 5: Number of Minnesota Electric Customers by Utility**

2005 Number of Minnesota Electric Customers for Investor-Owned Utilities

2005	Farm	Non-Farm Residential	Commercial	Industrial	Total
<b>Investor-Owned Utilities</b>					
Alliant Energy-Interstate Power Co	1,721	34,623	7,044	263	43,651
Minnesota Power	1,827	114,245	20,763	460	137,295
Northwestern Wisconsin Elec Co	30	42	28	0	100
Otter Tail Power Co	1,465	46,834	9,477	740	58,516
Xcel Energy	0	1,047,452	125,190	485	1,173,127
<b>Total: Investor-Owned Utilities</b>	<b>5,043</b>	<b>1,243,196</b>	<b>162,502</b>	<b>1,948</b>	<b>1,412,689</b>

2005 Number of Minnesota Electric Customers for Cooperative Utilities

2005	Farm	Non-Farm Residential	Commercial	Industrial	Total
<b>Dairyland Power Cooperative</b>					
Heartland Power Cooperative	40	0	0	0	40
Freeborn Mower Coop Svcs	5,798	5,840	78	7	5,925
Peoples Coop Power Assoc., Inc.	3,795	11,086	274	0	15,155
Tri-Co Elec Coop	10,443	1,789	364	2	12,598
<b>Total: Dairyland Power Coop</b>	<b>20,076</b>	<b>18,715</b>	<b>716</b>	<b>9</b>	<b>33,718</b>
<b>East River Electric Cooperative</b>					
H-D Electric Coop, Inc.	6	6	0	0	12
Lyon-Lincoln Elec Coop	3,163	525	280	1	3,969
Renville Sibley Coop Power Assn	1,704	185	53	6	1,948
Traverse Elec Coop	1,317	347	69	1	1,734
<b>Total: East River Electric Cooperative</b>	<b>6,190</b>	<b>1,063</b>	<b>402</b>	<b>8</b>	<b>7,663</b>

Number of Minnesota Electric Customers for Cooperative Utilities in 2005, Continued

2005	Farm	Non-Farm Residential	Commercial	Industrial	Total
<b>Great River Energy</b>					
Agralite Cooperative	4,403	0	255	3	4,661
Arrowhead Electric Coop*	0	3,403	413	0	3,816
BENCO Electric Coop	5,812	6,463	603	0	12,878
Connexus Energy	303	109,945	8,163	13	118,424
Brown Co Rural Elec Assn	3,190	115	455	61	3,821
Coop Lt & Pwr Assoc of Lake Co	0	5,079	516	1	5,596
Crow Wing Coop Pwr & Light	1,075	36,553	1,969	0	39,597
Dakota Electric Assn	273	90,214	4,126	2,207	96,820
East Central Energy	110	46,620	4,237	14	50,981
Federated Rural Elec Assn	3,822	676	421	2	4,921
Goodhue Co Coop Elec Assn	2,279	2,240	172	8	4,699
Itasca-Mantrap Coop Electric	959	9,115	796	1	10,871
Kandiyohi Power Coop	1,726	5,175	933	2	7,836
Lake Country Power	0	45,088	2,324	2	47,414
Lake Region Coop Elec Assc	6,690	16,365	1,868	130	25,053
McLeod Coop Power Assn	6,148	0	264	5	6,417
Meeker Coop Light&Power Assn	2,830	4,850	493	0	8,173
Mille Lacs Electric Coop	20	13,233	989	65	14,307
Minnesota Valley Elec Coop	0	28,434	2,806	0	31,240
Nobles Coop Electric	4,299	452	245	2	4,998
North Itasca Electric Coop	0	4,777	309	1	5,087
Redwood Electric Coop	2,310	0	153	0	2,463
Runestone Electric Assn	4,309	8,114	641	3	13,067
South Central Electric Assn	3,538	0	337	2	3,877
Stearns Coop Electric Assn	4,570	16,772	1,338	3	22,683
Steele Waseca Coop Electric	7,741	569	442	7	8,759
Todd Wadena Elec Coop	6,641	1,013	383	2	8,039
Wright Hennepin Coop Elec Assn	3,352	33,123	3,687	7	40,169
<b>Total: Great River Energy</b>	<b>76,400</b>	<b>488,388</b>	<b>39,338</b>	<b>2,541</b>	<b>606,667</b>

Number of Minnesota Electric Customers for Cooperative Utilities in 2005, Continued

2005	Farm	Non-Farm Residential	Commercial	Industrial	Total
<b>Minnkota Power Cooperative</b>					
Beltrami Electric Coop	16,461	1,345	1,230	0	19,036
Clearwater-Polk Elec Coop	0	3,962	294	0	4,256
North Star Electric Coop	4,269	1,501	556	0	6,326
PKM Electric Cooperative, Inc	3,378	0	257	0	3,635
Red Lake Electric Coop	4,663	0	308	49	5,020
Red River Valley Coop Power	4,179	0	478	0	4,657
Roseau Electric Coop	5,608	354	292	2	6,256
Wild Rice Electric Coop	11,345	1,107	670	1	13,123
<b>Total: MPC - Cooperative</b>	<b>49,903</b>	<b>8,269</b>	<b>4,085</b>	<b>52</b>	<b>62,309</b>
<b>Other Cooperatives</b>					
Iowa Lakes Electric Cooperative	0	16	3	0	19
Minnesota Valley Coop Lt & Pwr	4,198	810	244	3	5,255
Sioux Valley Southwestern	2,514	172	89	59	2,834
<b>Total: Other Cooperatives</b>	<b>6,712</b>	<b>998</b>	<b>336</b>	<b>62</b>	<b>8,108</b>
<b>Total: Cooperatives</b>	<b>159,281</b>	<b>517,433</b>	<b>44,877</b>	<b>2,672</b>	<b>718,465</b>

2005 Number of Minnesota Electric Customers for Municipal Utilities

2005	Farm	Non-Farm Residential	Commercial	Industrial	Total
<b>Central Minnesota Municipal Power Agency</b>					
Blue Earth Light & Water	0	1,678	327	59	2,064
Delano Municipal Utilities	0	1,853	292	81	2,226
Fairfax Public Utilities	4	575	103	6	688
Glencoe Municipal Utilities	0	2,437	385	3	2,825
Granite Falls Municipal Utilities	0	1,389	252	7	1,648
Janesville Municipal Utilities	0	996	155	0	1,151
Kasson City Of*	0	2,156	238	0	2,394
Kenyon Municipal Utilities	0	804	108	23	935
Lake Crystal Municipal	18	1,024	178	0	1,220
Madelia Municipal Light & Power	0	1,028	201	9	1,238
Mountain Lake Mun Utilities	36	822	163	13	1,034
New Ulm Pub Utilities	0	5,858	1,035	7	6,900
Sleepy Eye Pub Utilities	0	1,523	393	14	1,930
Springfield Pub Utilities	0	1,012	205	12	1,229
Truman Municipal Utility**	6	506	103	0	615
Windom Municipal Utilities	0	2,068	330	26	2,424
<b>Total: C MMPA</b>	<b>64</b>	<b>25,729</b>	<b>4,468</b>	<b>260</b>	<b>30,521</b>
<b>Heartland Consumers Power District</b>					
Marshall Municipal Utilities***	0	5,328	870	87	6,285
Tyler Municipal Light & Power	11	511	119	0	641
<b>Total: Heartland</b>	<b>11</b>	<b>5,839</b>	<b>989</b>	<b>87</b>	<b>6,926</b>
<b>Minnesota Municipal Power Agency</b>					
Anoka City Of	0	10,437	1,281	17	11,735
Arlington City Of***	0	891	135	0	1,026
Brownton Mun Light & Power	0	348	45	5	398
City of Chaska-Utility Dept.	0	7,621	892	240	8,753
Le Sueur Municipal Utilities	189	1,642	298	51	2,180
North St Paul City Of	0	5,709	631	0	6,340
Olivia City Of***	0	1,143	156	50	1,349
Shakopee Public Utilities	29	13,377	873	419	14,698
Winthrop City Of	12	664	122	2	800
<b>Total: MMPA</b>	<b>230</b>	<b>41,832</b>	<b>4,433</b>	<b>784</b>	<b>47,279</b>

Number of Minnesota Electric Customers for Municipal Utilities, Continued

2005	Farm	Non-Farm Residential	Commercial	Industrial	Total
<b>Missouri River Energy Services</b>					
Adrian Public Utilities	1	530	90	2	623
Alexandria Light & Power	0	7,357	1,508	161	9,026
Barnesville Municipal Electric	3	1,046	115	12	1,176
Benson Municipal Utilities	3	1,512	239	50	1,804
Breckenridge Pub Utilities	0	1,554	259	21	1,834
Detroit Lakes Pub Utilities	0	5,255	1,033	109	6,397
Elbow Lake Municipal Electric*	0	665	77	25	767
Henning Electric Dept	0	425	99	0	524
Jackson Electric Light & Power	0	1,576	266	48	1,890
Lake Park Pub Utilities	0	360	81	0	441
Lakefield Pub Utilities	2	895	157	0	1,054
Luverne Public Utilities	12	2,056	324	105	2,497
Madison Municipal Utilities***	0	851	177	13	1,041
Moorhead Pub Service	0	13,194	1,646	185	15,025
Ortonville City Of	0	1,066	1,169	0	2,235
St. James City of	3	1,885	376	1	2,265
Sauk Centre Public Utilities	0	1,887	359	73	2,319
Staples City of	0	1,093	209	7	1,309
Wadena Light & Water	0	2,140	453	108	2,701
Westbrook Mun Light & Power	19	339	78	2	438
Worthington Municipal Power	0	4,374	802	7	5,183
<b>Total: MRES</b>	<b>43</b>	<b>50,060</b>	<b>9,517</b>	<b>929</b>	<b>60,549</b>
<b>Northern Municipal Power Agency</b>					
Bagley Pub Utility	0	557	151	61	769
Baudette City Of	0	578	188	1	767
Fosston Municipal Utility	0	718	222	10	950
Halstad Municipal Utilities	0	266	66	0	332
Hawley Pub Utilities	0	876	185	0	1,061
Roseau Municipal Water & Light	0	1,136	270	0	1,406
Stephen Electric Dept	0	296	96	0	392
Thief River Falls Mun Utilities	0	3,784	680	28	4,492
Warren City Of***	0	668	145	0	813
Warroad Mun Light & Power	0	751	134	4	889
<b>Total: NMPA</b>	<b>0</b>	<b>9,630</b>	<b>2,137</b>	<b>104</b>	<b>11,871</b>

Number of Minnesota Electric Customers for Municipal Utilities, Continued

2005	Farm	Non-Farm Residential	Commercial	Industrial	Total
<b>Other Municipals</b>					
Ada Water & Light Dept	0	871	146	32	1,049
Aitkin Pub Utilities	0	1,449	342	48	1,839
Alpha City of	2	64	14	0	80
Alvarado Electric Dept	5	193	40	0	238
Bigelow City of	25	95	25	7	152
Biwabik Water Light & Power	0	615	121	0	736
Brainerd Public Utilities	0	6,330	1,254	32	7,616
Brewster Electric Light & Power	4	224	35	2	258
Buffalo City Of	2	4,407	707	15	5,131
Buhl Pub Utilities	0	529	43	0	572
Caledonia Mun Light & Power	8	1,334	186	73	1,601
Ceylon Public Utilities	0	191	46	0	237
Darwin Electric Dept	0	176	25	0	201
Dundee Electric Utility	0	50	16	0	66
Dunnell Electric Department	0	92	30	0	122
East Grand Forks Water & Light	0	3,447	495	11	3,953
Eitzen Public Utilities	0	130	19	4	153
Elk River Municipal Utilities	19	7,379	773	135	8,306
Ely Water & Light Dept	0	1,750	398	0	2,148
Gilbert Water & Light	0	909	79	0	988
Grand Rapids Pub Utilities	0	5,245	1,475	1	6,721
Grove City Electric Dept	22	337	64	0	423
Harmony Electric Dept	0	561	155	9	725
Hibbing Public Utilities	0	6,161	879	14	7,054
Hutchinson Utilities	0	5,938	803	119	6,860
Kandiyohi Municipal Utilities*	0	265	35	0	300
Kasota Electric Light	0	335	0	0	335
Keewatin Public Utilities***	0	547	11	0	558
Lanesboro Pub Utilities	0	453	154	0	607
Mabel City of	0	384	92	0	476
Melrose Public Utilities	54	1,285	245	2	1,586
Moose Lake Water & Light	0	745	268	2	1,015
Mountain Iron Water & Light	0	1,110	108	6	1,224
Nashwauk Pub Utilities	0	465	60	0	525
Newfolden Electric	0	167	31	0	198
Nielsville Vlg Light System	0	50	7	0	57
Peterson Public Utilities	0	115	0	0	115
Pierz Utilities*	0	556	102	0	658

Number of Minnesota Electric Customers for Municipal Utilities, Continued

2005	Farm	Non-Farm Residential	Commercial	Industrial	Total
<b>Other Municipals (continued)</b>					
Proctor Pub Utilities	0	1,238	88	1	1,327
Randall City of	0	254	46	2	302
Round Lake Electric Dept	0	188	33	2	223
Rushford City Of	0	831	114	17	962
Rushmore City of	0	14	164	0	178
Shelly Municipal Light Dept.^	0	120	33	0	153
Spring Grove Municipal Electric	5	629	140	3	777
St Charles Light & Water	0	1,512	193	12	1,717
Two Harbors Water & Light	0	1,665	201	42	1,908
Virginia Pub Utilities	0	4,292	949	0	5,241
Whalan City of	0	47	8	0	55
Willmar Municipal Utilities	0	7,866	1,197	31	9,094
<b>Total: Other Municipals</b>	<b>146</b>	<b>73,610</b>	<b>12,449</b>	<b>622</b>	<b>86,820</b>
<b>Southern Minnesota Municipal Power Agency</b>					
Austin Utilities	658	9,873	1,923	1	12,455
Blooming Prairie Utilities	0	840	193	0	1,033
Fairmont Pub Utilities	224	4,933	821	15	5,993
Grand Marais Utilities	0	886	318	0	1,204
Lake City Utility Board	34	2,573	397	6	3,010
Litchfield Pub Utilities	16	2,771	432	6	3,225
Mora Mun Electric Utility	0	1,635	230	31	1,896
New Prague Mun Utilities***	0	2,068	244	1	2,313
North Branch Mun Water & Light	0	1,669	232	8	1,909
Owatonna Public Utilities	0	10,037	994	59	11,090
Preston Public Utilities	4	675	150	11	840
Princeton Pub Utilities	0	2,125	279	28	2,432
Redwood Falls Pub Utilities	0	2,308	516	57	2,881
Rochester Pub Utilities	0	41,179	4,405	2	45,586
Spring Valley Pub Utility	0	1,285	198	0	1,483
St Peter Municipal Utilities	0	3,624	416	3	4,043
Waseca Utility	0	3,582	492	0	4,074
Wells Public Utilities	0	1,127	195	0	1,322
<b>Total: SMMPA</b>	<b>936</b>	<b>93,190</b>	<b>12,435</b>	<b>228</b>	<b>106,789</b>
<b>Total: Municipal Utilities</b>	<b>1,430</b>	<b>299,890</b>	<b>46,428</b>	<b>3,014</b>	<b>350,755</b>
<b>Total: Minnesota</b>	<b>165,754</b>	<b>2,060,519</b>	<b>253,807</b>	<b>7,634</b>	<b>2,481,909</b>

Notes for Table 5

\* 2005 data not submitted. Data is from 2004.

\*\* Data is from 2002.

\*\*\* Data is from 2003.

^ Data is from 2001.



**Table 6: Minnesota Electric Sales Revenue by Utility**

## 2005 Minnesota Electric Sales Revenue for Investor-Owned Utilities

2005	Farm	Non-Farm Residential	Commercial	Industrial	Total
<b>Investor-Owned Utilities</b>					
Alliant Energy-Interstate Power Co	3,422	26,932	17,151	21,922	69,427
Minnesota Power	3,490	67,251	78,203	265,866	414,810
Northwestern Wisconsin Elec Co	16	16	19	0	51
Otter Tail Power Co	2,459	38,490	24,179	62,433	127,561
Xcel Energy	0	760,095	968,861	460,411	2,189,367
<b>Total: Investor-Owned Utilities</b>	<b>9,388</b>	<b>892,785</b>	<b>1,088,412</b>	<b>810,632</b>	<b>2,801,216</b>

## 2005 Minnesota Electric Sales Revenue for Cooperative Utilities

2005	Farm	Non-Farm Residential	Commercial	Industrial	Total
<b>Dairyland Power Cooperative</b>					
Heartland Power Cooperative	74	0	0	0	74
Freeborn Mower Coop Svcs	0	8,930	1,735	1,827	12,492
Peoples Coop Power Assoc., Inc.	4,358	12,732	2,475	0	19,566
Tri-Co Electric Coop	16,047	299	2,424	1,589	20,359
<b>Total: Dairyland Power Coop</b>	<b>20,479</b>	<b>21,962</b>	<b>6,634</b>	<b>3,416</b>	<b>52,491</b>
<b>East River Electric Cooperative</b>					
H-D Electric Coop, Inc	7	8	0	0	16
Lyon-Lincoln Electric Coop	4,127	668	*	*	5,792
Renville Sibley Coop Power Assn	3,017	264	162	3,713	7,156
Traverse Electric Coop	2,223	176	*	*	2,931
<b>Total: East River Electric Coop</b>	<b>9,374</b>	<b>1,116</b>	<b>1,479</b>	<b>3,927</b>	<b>15,895</b>

Minnesota Electric Sales Revenue for Cooperative Utilities, Continued

2005	Farm	Non-Farm Residential	Commercial	Industrial	Total
<b>Great River Energy</b>					
Agralite Cooperative	8,204	0	1,953	2,535	12,692
Arrowhead Electric Coop	0	3,097	1,730	0	4,827
BENCO Electric Coop	6,967	7,653	5,982	0	20,602
Brown Co Rural Elec Assn	4,727	109	1,063	1,812	7,712
Connexus Energy	663	98,542	44,423	6,160	149,789
Coop Lt & Pwr Assoc of Lake Co	0	3,997	*	*	6,451
Crow Wing Coop Pwr & Light	4,069	25,616	8,823	0	38,508
Dakota Electric Assn	657	81,046	5,740	45,866	133,309
East Central Energy	288	48,753	17,777	5,458	72,276
Federated Rural Elec Assn	5,218	336	2,106	1,985	9,645
Goodhue Co Coop Elec Assn	4,451	2,646	295	93	7,484
Itasca-Mantrap Coop Electric	1,274	7,496	*	*	13,164
Kandiyohi Power Coop	2,818	5,435	2,498	183	10,934
Lake Country Power	0	37,339	8,349	3,956	49,644
Lake Region Coop Elec Assc	10,554	14,541	4,470	221	29,785
McLeod Coop Power Assn	8,803	0	827	2,205	11,834
Meeker Coop Light & Power Assn	4,968	4,738	1,859	0	11,564
Mille Lacs Electric Coop	17	10,407	3,275	1,632	15,331
Minnesota Valley Elec Coop	0	30,332	13,200	0	43,532
Nobles Coop Electric	6,238	116	1,083	1,963	9,400
North Itasca Electric Coop	0	3,517	*	*	4,322
Redwood Electric Coop	4,166	0	644	0	4,811
Runestone Electric Assn	5,695	7,471	1,578	680	15,424
South Central Electric Assn	5,528	0	1,945	2,719	10,191
Stearns Coop Electric Assn	9,642	14,072	4,291	1,137	29,143
Steele Waseca Coop Electric	11,404	271	2,950	3,204	17,829
Todd Wadena Electric Coop	8,857	377	1,593	245	11,071
Wright Hennepin Coop Elec Assn	3,559	29,278	15,076	3,724	51,637
<b>Total: Great River Energy</b>	<b>118,767</b>	<b>437,184</b>	<b>157,543</b>	<b>89,417</b>	<b>802,911</b>

Minnesota Electric Sales Revenue for Cooperative Utilities, Continued

2005	Farm	Non-Farm Residential	Commercial	Industrial	Total
<b>Minnkota Power Cooperative</b>					
Beltrami Electric Coop	18,373	484	4,386	0	23,243
Clearwater-Polk Electric Coop	0	4,424	646	0	5,070
North Star Electric Coop	5,620	595	2,323	0	8,538
PKM Electric Cooperative, Inc	5,275	0	1,301	0	6,576
Red Lake Electric Coop	6,267	0	*	*	7,560
Red River Valley Coop Power	6,530	0	1,620	0	8,149
Roseau Electric Coop	7,110	372	1,069	1,322	9,873
Wild Rice Electric Coop	12,218	337	*	*	14,413
<b>Total: MPC - Cooperative</b>	<b>61,394</b>	<b>6,211</b>	<b>13,514</b>	<b>2,305</b>	<b>83,423</b>
<b>Other Cooperatives</b>					
Iowa Lakes Electric Coop	0	23	7	0	30
Minnesota Valley Coop Lt & Pwr	7,291	469	1,128	936	9,823
Sioux Valley Southwestern	4,231	177	202	1,450	6,060
<b>Total: Other Cooperatives</b>	<b>11,522</b>	<b>668</b>	<b>1,337</b>	<b>2,386</b>	<b>15,913</b>
<b>Total: Cooperatives</b>	<b>221,536</b>	<b>467,141</b>	<b>180,506</b>	<b>101,451</b>	<b>970,633</b>

2005 Minnesota Electric Sales Revenue for Municipal Utilities

2005	Farm	Non-Farm Residential	Commercial	Industrial	Total
<b>Central Minnesota Municipal Power Agency</b>					
Blue Earth Light & Water	0	1,258	608	2,622	4,488
Delano Municipal Utilities	0	1,381	486	2,098	3,965
Fairfax Public Utilities	4	383	272	124	782
Glencoe Municipal Utilities	0	2,420	3,027	1,952	7,400
Granite Falls Municipal Utilities	0	1,004	1,264	131	2,399
Janesville Municipal Utilities	0	710	346	0	1,056
Kasson City Of	0	1,430	756	0	2,186
Kenyon Municipal Utilities	0	783	417	725	1,925
Lake Crystal Municipal	18	792	610	0	1,420
Madelia Municipal Light & Power	0	791	979	791	2,561
Mountain Lake Mun Utilities	129	768	352	683	1,932
New Ulm Pub Utilities	0	5,871	7,894	7,537	21,302
Sleepy Eye Pub Utilities	0	1,211	1,189	1,496	3,895
Springfield Pub Utilities	0	650	301	856	1,807
Truman Municipal Utility^	73	500	620	0	1,193
Windom Municipal Utilities	0	1,153	989	1,789	3,931
<b>Total: CMPA</b>	<b>224</b>	<b>21,105</b>	<b>20,109</b>	<b>20,805</b>	<b>62,243</b>
<b>Heartland Consumers Power District</b>					
Marshall Municipal Utilities	0	3,440	2,238	20,412	26,090
Tyler Municipal Light & Power	13	530	127	0	671
<b>Total: Heartland</b>	<b>13</b>	<b>3,970</b>	<b>2,365</b>	<b>20,412</b>	<b>26,761</b>
<b>Minnesota Municipal Power Agency</b>					
Anoka City Of	0	6,814	6,350	5,598	18,762
Arlington City Of***	0	587	759	0	1,346
Brownton Mun Light & Power	0	250	82	19	351
City of Chaska-Utility Dept.	0	5,519	1,302	12,373	19,194
Le Sueur Municipal Utilities	392	1,364	592	4,790	7,138
North St Paul City Of	0	3,989	2,708	0	6,697
Olivia City Of***	0	688	216	696	1,600
Shakopee Public Utilities	370	9,104	793	13,702	23,969
Winthrop City Of	14	411	293	168	886
<b>Total: MMPA</b>	<b>776</b>	<b>28,725</b>	<b>13,096</b>	<b>37,346</b>	<b>79,943</b>

Minnesota Electric Sales Revenue for Municipal Utilities, Continued

2005	Farm	Non-Farm Residential	Commercial	Industrial	Total
<b>Missouri River Energy Services</b>					
Adrian Public Utilities	*	481	417	*	939
Alexandria Light & Power	0	4,821	2,539	7,396	14,756
Barnesville Municipal Electric	6	1,017	181	149	1,353
Benson Municipal Utilities	10	912	478	681	2,081
Breckenridge Pub Utilities	0	1,002	568	562	2,132
Detroit Lakes Pub Utilities	0	3,336	1,878	3,803	9,017
Elbow Lake Municipal Electric**	0	430	490	0	920
Henning Electric Dept	0	298	234	0	532
Jackson Electric Light & Power	0	899	431	787	2,117
Lake Park Pub Utilities	0	244	171	0	415
Lakefield Pub Utilities	1	430	368	0	799
Luverne Public Utilities	9	1,558	1,302	1,962	4,831
Madison Municipal Utilities***	0	442	404	143	989
Moorhead Pub Service	0	8,462	2,539	9,332	20,333
Ortonville City Of	0	772	896	0	1,668
St. James City of	*	1,000	1,501	*	3,269
Sauk Centre Public Utilities	0	1,054	724	1,424	3,202
Staples City of	0	717	480	305	1,503
Wadena Light & Water	0	1,186	325	1,784	3,295
Westbrook Mun Light & Power	18	305	107	92	523
Worthington Municipal Power	0	2,552	4,133	4,322	11,007
<b>Total: MRES</b>	<b>47</b>	<b>31,919</b>	<b>20,168</b>	<b>33,548</b>	<b>85,681</b>
<b>Northern Municipal Power Agency</b>					
Bagley Pub Utility	0	456	311	872	1,639
Baudette City Of	0	385	*	*	1,512
Fosston Municipal Utility	0	700	*	*	2,146
Halstad Municipal Utilities	0	288	265	0	554
Hawley Pub Utilities	0	715	523	0	1,238
Roseau Municipal Water & Light	0	977	1,445	0	2,423
Stephen Electric Dept	0	305	270	0	574
Thief River Falls Municipal Utilities	0	2,571	2,810	2,020	7,401
Warren City Of***	0	549	578	0	1,127
Warroad Municipal Light & Power	0	605	879	1,217	2,701
<b>Total: NMPA</b>	<b>0</b>	<b>7,552</b>	<b>8,668</b>	<b>5,095</b>	<b>21,315</b>

Minnesota Electric Sales Revenue for Municipal Utilities, Continued

2005	Farm	Non-Farm Residential	Commercial	Industrial	Total
<b>Other Municipals</b>					
Ada Water & Light Dept	0	764	638	143	1,545
Aitkin Pub Utilities	0	845	602	1,067	2,514
Alpha City of	5	60	57	0	122
Alvarado Electric Dept	42	160	40	0	242
Bigelow City of	32	53	26	102	213
Biwabik Water Light & Power	0	224	266	0	490
Brainerd Public Utilities	0	3,346	5,292	5,463	14,101
Brewster Electric Light & Power	4	129	49	97	278
Buffalo City Of	2	2,911	4,449	563	7,926
Buhl Pub Utilities	0	206	177	0	383
Caledonia Mun Light & Power	7	734	278	615	1,634
Ceylon Public Utilities	0	128	60	0	189
Darwin Electric Dept**	0	133	19	0	152
Dundee Electric Utility	0	26	25	0	51
Dunnell Electric Department	0	53	51	0	104
East Grand Forks Water & Light	0	*	2,497	*	9,863
Eitzen Public Utilities	0	145	5	5	155
Elk River Municipal Utilities	19	6,271	1,751	6,178	14,219
Ely Water & Light Dept	0	1,013	1,718	0	2,731
Gilbert Water & Light	0	368	286	0	654
Grand Rapids Pub Utilities	0	*	5,921	*	9,758
Grove City Electric Dept	32	293	234	0	559
Harmony Electric Dept	0	260	297	54	611
Hibbing Public Utilities	0	4,345	5,140	991	10,476
Hutchinson Utilities	0	4,722	1,692	18,574	24,987
Kandiyohi Municipal Utilities**	0	161	60	0	221
Kasota Electric Light	0	363	0	0	363
Keewatin Public Utilities	0	402	36	0	438
Lanesboro Pub Utilities	0	243	291	0	534
Mabel City of	0	166	183	0	349
Melrose Public Utilities	130	874	1,086	3,003	5,093
Moose Lake Water & Light	0	395	946	695	2,035
Mountain Iron Water & Light	0	708	637	114	1,460
Nashwauk Pub Utilities	0	218	220	0	438
Newfolden Electric	0	119	134	0	253
Nielsville Village Light System	0	36	16	0	52
Peterson Public Utilities	0	110	0	0	110
Pierz Utilities**	0	348	293	0	641

## Minnesota Electric Sales Revenue for Municipal Utilities, Continued

2005	Farm	Non-Farm Residential	Commercial	Industrial	Total
<b>Other Municipals (continued)</b>					
Proctor Pub Utilities	0	697	*	*	1,356
Randall City of	0	163	135	2	300
Round Lake Electric Dept	0	132	57	423	611
Rushford City of**	0	540	230	320	1,089
Rushmore City of	0	24	122	0	146
Shelly Municipal Light Dept.	0	105	65	0	170
Spring Grove Municipal Electric	19	334	301	280	934
St Charles Light & Water	0	929	380	676	1,985
Two Harbors Water & Light^^	-	-	-	-	2,218
Virginia Pub Utilities	0	2,772	5,247	0	8,019
Whalan City of	0	23	16	0	39
Willmar Municipal Utilities	0	5,291	5,927	6,919	18,137
<b>Total: Other Municipals</b>	<b>290</b>	<b>48,273</b>	<b>48,363</b>	<b>51,802</b>	<b>150,947</b>
<b>Southern Minnesota Municipal Power Agency</b>					
Austin Utilities	530	6,469	*	*	21,254
Blooming Prairie Utilities	0	523	1,062	0	1,585
Fairmont Pub Utilities	268	2,929	3,117	2,803	9,117
Grand Marais Utilities	0	599	1,032	0	1,631
Lake City Utility Board	58	1,735	1,438	5,058	8,288
Litchfield Pub Utilities	29	1,791	1,831	2,007	5,658
Mora Municipal Electric Utility	0	890	590	2,165	3,645
New Prague Municipal Utilities	0	1,157	*	*	3,725
North Branch Mun Water & Light	0	1,037	1,022	334	2,392
Owatonna Public Utilities	0	6,475	5,693	10,544	22,712
Preston Public Utilities	10	411	281	238	940
Princeton Pub Utilities	0	1,643	1,120	1,335	4,098
Redwood Falls Pub Utilities	0	1,606	1,239	1,184	4,029
Rochester Pub Utilities	0	30,055	45,674	15,485	91,213
Spring Valley Pub Utility	0	723	788	0	1,512
St Peter Municipal Utilities	0	2,467	2,527	1,452	6,447
Waseca Utility	0	1,985	1,854	0	3,839
Wells Public Utilities	0	805	830	0	1,635
<b>Total: SMMPA</b>	<b>895</b>	<b>63,301</b>	<b>79,763</b>	<b>49,763</b>	<b>193,721</b>
<b>Total: Municipal Utilities</b>	<b>2,245</b>	<b>204,845</b>	<b>192,531</b>	<b>218,771</b>	<b>620,611</b>
<b>Total: Minnesota</b>	<b>233,169</b>	<b>1,564,770</b>	<b>1,461,450</b>	<b>1,130,853</b>	<b>4,392,460</b>

Notes for Table 6

\* Withheld to avoid disclosure of individual company data. Data included in totals.

\*\* 2005 data not submitted. Data is from 2004.

\*\*\* Data is from 2003.                      ^ Data is from 2002.

^^ Data not provided by customer class.

**Table 7: Minnesota Residential Electric Space Heating Customers**

## 2005 Minnesota Electric Space Heating Customers for Investor-Owned Utilities

2005	Customers	Megawatt-Hours
<b>Investor-Owned Utilities</b>		
Alliant Energy-Interstate Power Co	1,507	17,616
Minnesota Power Company	11,602	157,730
Otter Tail Power Co	7,298	128,004
Xcel Energy	27,799	368,762
<b>Total: Investor-Owned Utilities</b>	<b>48,206</b>	<b>672,112</b>

## 2005 Minnesota Electric Space Heating Customers for Cooperative Utilities

2005	Customers	Megawatt-Hours
<b>Dairyland Power Cooperative</b>		
Freeborn Mower Elec Coop	504	5,928
Heartland Power Coop	5	32
Peoples Coop Power Assoc., Inc.	1,135	18,060
Tri-Co Elec Coop	1,606	47,274
<b>Total: Dairyland Power</b>	<b>3,250</b>	<b>71,294</b>
<b>East River Electric Cooperative</b>		
H-D Electric Coop, Inc	2	6
Lyon-Lincoln Elec Coop	735	8,725
Renville Sibley Coop Power	285	4,345
Traverse Elec Coop	734	14,000
<b>Total: East River Electric</b>	<b>1,756</b>	<b>27,076</b>



Minnesota Electric Space Heating Customers for Cooperative Utilities in 2005, Cont.

2005	Customers	Megawatt-Hours
<b>Great River Energy</b>		
Agralite Cooperative	720	5,655
Arrowhead Electric Coop*	840	14,215
BENCO Electric Coop	402	5,645
Brown Co Rural Electric Assn	328	3,494
Connexus Energy	591	7,292
Coop Light & Power Assoc of Lake Co	645	14,010
Crow Wing Coop Power & Light	6,530	53,875
Dakota Electric Assn	1,406	22,757
East Central Electric Assn	5,070	3,264
Federated Rural Electric Assn	794	13,022
Goodhue Co Coop Electric Assn	107	1,660
Itasca-Mantrap Coop Electric	1,762	27,000
Kandiyohi Coop Electric Power	1,522	9,000
Lake Country Power	12,594	119,174
Lake Region Coop Electric Assc	3,152	25,669
McLeod Coop Power Assn	842	7,342
Meeker Coop Light & Power Assn	2,086	31,200
Mille Lacs Electric Coop	1,970	19,100
Minnesota Valley Electric Coop	3,779	34,000
Nobles Coop Electric	448	11,423
North Itasca Electric Coop	532	6,979
Redwood Electric Coop	375	4,109
Runestone Electric Assn	3,047	52,000
South Central Electric Assn	275	4,800
Stearns Coop Electric Assn	3,008	72,799
Steele Waseca Coop Electric	679	7,698
Todd Wadena Coop	2,100	25,200
Wright Hennepin Coop Electric	3,654	93,076
<b>Total: Great River Energy</b>	<b>59,258</b>	<b>695,458</b>

Minnesota Electric Space Heating Customers for Cooperative Utilities in 2005, Cont.

<b>2005</b>	<b>Customers</b>	<b>Megawatt-Hours</b>
<b>Minnkota Power Cooperative</b>		
Beltrami Electric Coop	6,689	153,072
Clearwater-Polk Electric Coop	1,613	19,039
North Star Electric Coop	2,320	35,300
PKM Electric Cooperative	1,733	23,164
Red Lake Electric Coop	2,168	28,041
Red River Valley Coop Power	2,082	29,486
Roseau Electric Coop	2,879	39,194
Wild Rice Electric Coop**	3,671	128,420
<b>Total: MPC - Cooperative</b>	<b>23,155</b>	<b>455,716</b>
<b>Other Cooperatives</b>		
Iowa Lakes Electric Cooperative	2	32
Minnesota Valley Coop Lt & Power	185	2,991
Sioux Valley Southwestern Electric	650	22,016
<b>Total: Other Cooperatives</b>	<b>837</b>	<b>25,039</b>
<b>Total: Cooperatives</b>	<b>88,256</b>	<b>1,274,582</b>

2005 Minnesota Electric Space Heating Customers for Municipal Utilities

2005	Customers	Megawatt-Hours
<b>Central Minnesota Municipal Power Agency</b>		
Blue Earth Light & Water	67	644
Delano Municipal Utilities	87	865
Fairfax Public Utilities	107	1,674
Glencoe Municipal Utilities	104	1,456
Granite Falls Municipal Utilities	120	200
Kasson City Of	34	409
Kenyon Municipal Utilities	21	199
Lake Crystal Municipal	60	703
Madelia Municipal Light & Power	3	433
New Ulm Pub Utilities	5	318
Sleepy Eye Pub Utilities	6	126
Truman Municipal Utility***	36	264
Windom Municipal Utilities	42	879
<b>Total: CMPA</b>	<b>692</b>	<b>8,170</b>
<b>Heartland Consumers Power District</b>		
Marshall Municipal Utilities	1,462	21,290
Tyler Municipal Light & Power	100	3,400
<b>Total: Heartland</b>	<b>1,562</b>	<b>24,690</b>
<b>Minnesota Municipal Power Agency</b>		
Anoka City Of	102	1,675
Arlington City Of**	11	300
Brownton Municipal Light & Power	31	287
Chaska City of	32	3,911
Le Sueur Municipal Utilities	6	79
North St Paul City Of	16	192
Olivia City Of**	41	2,278
Shakopee Public Utilities	397	4,540
Winthrop City Of	3	125
<b>Total: MPPA</b>	<b>639</b>	<b>13,387</b>

Minnesota Electric Space Heating Customers for Municipal Utilities in 2005, Cont.

2005	Customers	Megawatt-Hours
<b>Missouri River Energy Services</b>		
Adrian Public Utilities	63	1,824
Alexandria Pub Works	1,161	16,200
Barnesville Municipal Electric	299	5,748
Benson Municipal Utilities	105	839
Breckenridge Pub Utilities	373	7,070
Detroit Lakes Pub Utilities	1,031	18,186
Elbow Lake Municipal Electric*	119	2,000
Henning Electric Dept	84	1,326
Jackson Electric Light & Power	202	1,805
Lake Park Pub Utilities	33	200
Lakefield Pub Utilities	43	562
Luverne Municipal Utilities	234	3,364
Madison Municipal Utilities	207	1,743
Moorhead Pub Service	718	9,417
Ortonville City Of	165	1,810
St. James City of	205	2,577
Sauk Centre Water Light & Power	232	3,116
Staples City of	38	296
Wadena Light & Water	335	6,161
Worthington Municipal Power	49	653
<b>Total: MRES</b>	<b>5,696</b>	<b>84,897</b>
<b>Northern Municipal Power Agency</b>		
Bagley Pub Utility	222	3,299
Baudette City Of	110	1,307
Fosston Municipal Utility	320	4,425
Halstad Municipal Utilities	708	11,407
Hawley Pub Utilities	160	1,408
Roseau Municipal Water & Light	334	10,238
Stephen Electric Dept	81	1,993
Thief River Falls Municipal Utilities	587	6,526
Warren City Of**	115	2,140
Warroad Municipal Light & Power	146	1,701
<b>Total: NMPA</b>	<b>2,783</b>	<b>44,444</b>

Minnesota Electric Space Heating Customers for Municipal Utilities in 2005, Cont.

2005	Customers	Megawatt-Hours
<b>Other Municipals</b>		
Ada Water & Light Dept	185	3,150
Aitkin Pub Utilities	169	2,175
Alpha City of	2	36
Alvarado Electric Dept	32	437
Biwabik Water Light & Power	18	3,441
Brainerd Public Utilities	488	5,439
Buffalo City Of	273	2,835
Buhl Pub Utilities	9	340
Caledonia Municipal Light & Power	7	354
Darwin City of	24	358
Dundee City of	2	21
East Grand Forks Water & Light	516	6,787
Eitzen Public Utilities	17	171
Elk River Municipal Utilities	281	4,428
Ely Water & Light Dept	65	839
Gilbert Water & Light	3	48
Grand Rapids Pub Utilities	113	2,281
Harmony Electric Dept	7	60
Hibbing Public Utilities	593	5,721
Hutchinson Utilities	253	2,643
Kandiyohi Municipal Utilities**	90	2,800
Keewatin Public Utilities	4	980
Lanesboro Pub Utilities	19	50
Mabel City of	11	112
Melrose Municipal Utilities	371	6,537
Moose Lake Water & Light	103	1,060
Mountain Iron Water & Light	289	3,232
Nashwauk Pub Utilities	4	72
Newfolden Electric	28	509
Peterson Public Utilities	15	130
Pierz Utilities*	5	50
Proctor Pub Utilities	160	2,038

Minnesota Electric Space Heating Customers for Municipal Utilities in 2005, Cont.

2005	Customers	Megawatt-Hours
<b>Other Municipals, continued</b>		
Randall Electric	6	150
Round Lake Electric Dept	3	284
Rushford City of	48	1,192
Rushmore City of	8	100
Shelly Municipal Light Dept.	32	371
St Charles Light & Water**	132	1,094
Two Harbors Water & Light	8	149
Virginia Public Utilities	335	6,741
Willmar Municipal Utilities	279	85,865
<b>Total: Other Municipals</b>	<b>5,007</b>	<b>155,080</b>
<b>Southern Minnesota Municipal Power Agency</b>		
Austin Utilities	185	1,073
Blooming Prairie Utilities	10	223
Fairmont Pub Utilities	116	2,413
Grand Marais Utilities	131	2,710
Litchfield Pub Utilities	445	8,731
Mora Municipal Electric Utility	87	862
New Prague Municipal Utilities	70	491
North Branch Municipal Water & Light	11	114
Owatonna Public Utilities	85	1,063
Preston Public Utilities	18	754
Princeton Public Utilities	45	1,268
Redwood Falls Pub Utilities	561	10,979
Rochester Public Utilities	1,544	14,900
Spring Valley Public Utility	5	310
St Peter Municipal Utilities	86	611
Waseca Water & Light Dept	103	695
Wells Public Utilities	76	476
<b>Total: SMMPA</b>	<b>3,578</b>	<b>47,673</b>
<b>Total: Municipal Utilities</b>	<b>19,957</b>	<b>378,341</b>
<b>Total: Minnesota</b>	<b>156,419</b>	<b>2,325,035</b>

Notes for Table 7

\* 2005 data not submitted. Data is from 2004.

\*\* Data is from 2003.

\*\*\* Data is from 2002.

^^ Data not provided by customer class.

**Table 8: Minnesota Electric Consumption by County**

Minnesota Electric Consumption in 2005

<b>County</b>	<b>MWH</b>	<b>Consumption Rank*</b>	<b>Population Rank*</b>
Aitkin	192,572	58	57
Anoka	2,543,436	5	4
Becker	394,893	36	34
Beltrami	558,788	26	23
Benton	856,772	10	26
Big Stone	70,051	85	81
Blue Earth	805,854	15	15
Brown	347,076	38	37
Carlton	690,124	18	31
Carver	845,549	13	11
Cass	456,466	31	36
Chippewa	148,114	67	62
Chisago	362,915	37	22
Clay	599,528	22	17
Clearwater	241,338	51	75
Cook	80,791	81	84
Cottonwood	184,632	64	63
Crow Wing	848,709	12	16
Dakota	4,717,100	4	3
Dodge	190,056	60	51
Douglas	456,292	32	28
Faribault	240,387	52	55
Fillmore	189,433	61	46
Freeborn	408,144	35	29
Goodhue	576,220	25	19
Grant	72,108	83	80
Hennepin	13,350,636	1	1
Houston	171,814	65	48
Hubbard	283,255	44	50
Isanti	278,802	46	33
Itasca	648,491	19	20
Jackson	133,056	71	66
Kanabec	131,125	72	59
Kandiyohi	511,928	27	21
Kittson	134,393	70	82
Koochiching	577,778	24	58
Lac Qui Parle	129,024	73	76
Lake	646,150	21	69
Lake of the Woods	71,617	84	85
Le Sueur	320,373	41	39
Lincoln	65,791	86	79
Lyon	708,386	17	40
McLeod	510,101	28	25
Mahnomen	75,082	82	83
Marshall	186,519	63	70

## Minnesota Electric Consumption in 2005, Continued

County	MWH	Consumption Rank*	Population Rank*
Martin	303,286	42	44
Meeker	282,099	45	42
Mille Lacs	230,844	53	43
Morrison	421,044	34	30
Mower	446,843	33	24
Murray	96,326	78	74
Nicollet	333,739	39	35
Nobles	324,918	40	47
Norman	91,531	79	77
Olmstead	1,482,158	8	8
Otter Tail	712,708	16	13
Pennington	204,217	57	61
Pine	221,198	55	38
Pipestone	118,196	77	72
Polk	471,480	30	32
Pope	125,474	74	67
Ramsey	5,895,954	3	2
Red Lake	122,064	76	86
Redwood	223,377	54	53
Renville	291,104	43	52
Rice	646,685	20	14
Rock	136,010	68	73
Roseau	260,647	49	54
St. Louis	6,682,490	2	6
Scott	1,238,844	9	10
Sherburne	854,350	11	12
Sibley	190,468	59	56
Stearns	1,719,690	7	7
Steele	501,028	29	27
Stevens	135,470	69	71
Swift	186,571	62	64
Todd	272,075	47	41
Traverse	51,121	87	87
Wabasha	265,187	48	45
Wadena	215,459	56	60
Waseca	241,383	50	49
Washington	2,187,214	6	5
Watonwan	149,518	66	65
Wilkin	87,595	80	78
Winona	595,065	23	18
Wright	808,538	14	9
Yellow Medicine	124,648	75	68

Note for Table 8

\* Ranking is highest to lowest (1 is highest, 87 is lowest).



**Table 9: Utility-Owned Electric Generating Plants Serving Minnesota**

2005	Plant Profile				
	Unit Type	Fuel Type	Capacity		Year Installed
			Summer (MW)	Winter (MW)	
<b>Alexandria Light and Power</b>					
Alexandria Power Plant Douglas County, MN					
Unit 1	Int Comb	Oil #2	1.000	1.000	1952
Unit 2	Int Comb	Gas/Oil #2	4.000	4.000	1968
Unit 3	Int Comb	Gas/Oil #2	4.000	4.000	1968
<b>Alliant Energy-Interstate Power and Light Company</b>					
Agency Street Gas Turbine Des Moines County, IA					
Unit 1	Gas Turbine	Gas/Oil #2	15.900	17.400	1989
Unit 2	Gas Turbine	Gas/Oil #2	16.500	17.300	1989
Unit 3	Gas Turbine	Gas/Oil #2	16.400	17.200	1989
Unit 4	Gas Turbine	Gas/Oil #2	16.200	17.300	1989
Ames Diesel Story County, IA					
Unit 1	Int Comb	Oil #2	1.000	1.000	1960
Unit 2	Int Comb	Oil #2	1.000	1.000	1960
Anamosa Hydro Jones County, IA					
Unit 1	Hydro	Water	0.100	0.100	1924
Burlington Gas Turbine Des Moines County, IA					
Unit 1	Gas Turbine	Gas	16.700	0.000	1995
Unit 2	Gas Turbine	Gas	15.000	0.000	1995
Unit 3	Gas Turbine	Gas	18.100	0.000	1995
Unit 4	Gas Turbine	Gas	16.400	0.000	1996
Burlington Generating Station Des Moines County, IA					
Unit 1	Steam	Coal/Gas	212.000	216.100	1968
Centerville Diesel Apanoose County, IA					
Unit 1	Int Comb	Oil #2	2.300	2.300	1963
Unit 2	Int Comb	Oil #2	2.000	2.000	1963
Unit 3	Int Comb	Oil #2	2.100	2.100	1963

2005	Plant Profile				
	Unit Type	Fuel Type	Capacity		Year Installed
			Summer (MW)	Winter (MW)	
<b>Alliant Energy-Interstate Power and Light Company, continued</b>					
Centerville Gas Turbine Appanoose County, IA					
Unit 1	Gas Turbine	Oil #2	23.900	28.200	1990
Unit 2	Gas Turbine	Oil #2	25.800	30.100	1990
Duane Arnold Energy Center Benton County, IA					
Unit 1	Nuclear	Uranium	406.400	419.900	1974
Dubuque Internal Combustion Dubuque County, IA					
Unit 1	Int Comb	Oil #2	2.200	2.200	1966
Unit 2	Int Comb	Oil #2	2.200	2.200	1966
Dubuque Steam Dubuque County, IA					
Unit 2	Steam	Coal/Gas	13.700	14.300	1929
Unit 3	Steam	Coal/Gas	29.400	29.900	1952
Unit 4	Steam	Coal/Gas	35.100	36.300	1959
Emery Cerro Gordo County, IA					
Unit 1	Gas Turbine	Gas	158.000	169.900	2004
Unit 2	Gas Turbine	Gas	157.200	171.100	2004
Unit 3	Steam	Gas	240.300	174.400	2004
Fox Lake Gas Turbine Martin County, MN					
Unit 4	Gas Turbine	Oil #2	18.800	22.400	1974
Fox Lake Steam Martin County, MN					
Unit 1	Steam	Gas/Oil #6	12.600	0.000	1950
Unit 2	Steam	Gas/Oil #6	0.000	0.000	1951
Unit 3	Steam	Coal/Gas/Oil #6	84.200	86.200	1962
Grinnell Gas Turbine Poweshiek County, IA					
Unit 1	Gas Turbine	Gas	22.700	0.000	1990
Unit 2	Gas Turbine	Gas	20.400	0.000	1990

2005	Plant Profile				
	Unit Type	Fuel Type	Capacity		Year Installed
			Summer (MW)	Winter (MW)	
<b>Alliant Energy-Interstate Power and Light Company, continued</b>					
Hills Internal Combustion Rock County, MN					
Unit 1	Int Comb	Oil #2	2.000	2.000	1996
Unit 2	Int Comb	Oil #2	1.900	1.900	1960
Iowa Falls Hydro Hardin County, IA					
Unit 1	Hydro	Water	0.500	0.500	1928
Lansing Internal Combustion Allamakee County, IA					
Unit 1	Int Comb	Oil #2	1.000	1.000	1970
Unit 2	Int Comb	Oil #2	1.000	1.000	1971
Lansing Steam Allamakee County, IA					
Unit 1	Steam	Coal/Oil #2	0.000	0.000	1948
Unit 2	Steam	Coal/Oil #2	10.700	11.700	1949
Unit 3	Steam	Coal/Oil #2	36.000	36.200	1957
Unit 4	Steam	Coal/Oil #2	267.800	270.900	1977
Lime Creek Cerro Gordo County, IA					
Unit 1	Gas Turbine	Oil #2	35.700	41.500	1991
Unit 2	Gas Turbine	Oil #2	36.300	41.900	1991
Louisa Station No. 1 (4% share) Louisa County, IA					
Unit 1	Steam	Coal/Gas	28.000	28.000	1983
M.L. Kapp Steam Clinton County, IA					
Unit 1	Steam	Gas	17.200	0.000	1947
Unit 2	Steam	Coal/Gas	220.200	224.000	1967
Maquoketa Hydro Jackson County, IA					
Unit 1	Hydro	Water	0.600	0.600	1924
Unit 2	Hydro	Water	0.600	0.600	1924

2005	Plant Profile				
	Unit Type	Fuel Type	Capacity		Year Installed
			Summer (MW)	Winter (MW)	
<b>Alliant Energy-Interstate Power and Light Company, continued</b>					
Marshalltown Gas Turbine Marshall County, IA					
Unit 1	Gas Turbine	Oil #2	55.300	62.500	1977
Unit 2	Gas Turbine	Oil #2	53.800	61.300	1977
Unit 3	Gas Turbine	Oil #2	56.700	63.600	1977
Montgomery Gas Turbine LeSueur County, MN					
Unit 1	Gas Turbine	Oil #2	19.800	23.800	1974
Neal No. 3 Woodbury County, IA					
Unit 3	Steam	Coal	144.200	144.200	1975
Neal No. 4 (jointly owned) Woodbury County, IA					
Unit 4	Steam	Coal/Oil #2	162.400	162.400	1979
Ottumwa Generating Station Wappello County, IA					
Unit 1	Steam	Coal/Oil #2	321.700	321.700	1981
Prairie Creek Linn County, IA					
Unit 1	Steam	Coal	2.600	2.600	1997
Unit 2	Steam	Coal	15.700	15.800	1950
Unit 3	Steam	Coal	49.600	51.300	1958
Unit 4	Steam	Coal	133.500	138.300	1968
Red Cedar Linn County, IA					
Unit 1	Gas Turbine	Gas	17.600	19.700	1996
Sixth Street Station Linn County, IA					
Unit 1	Steam	Coal	0.000	0.000	1921
Unit 2	Steam	Coal/Gas/REF	3.500	5.000	1930
Unit 4	Steam	Coal/Gas/REF	8.000	6.200	1941
Unit 6	Steam	Coal	0.000	0.000	1925
Unit 7	Steam	Coal/Gas/REF	19.200	11.900	1944
Unit 8	Steam	Coal/Gas/REF	24.700	24.900	1950

2005	Plant Profile				
	Unit Type	Fuel Type	Capacity		Installed
			Summer (MW)	Winter (MW)	
<b>Alliant Energy-Interstate Power and Light Company, continued</b>					
Sutherland Station Marshall County, IA					
Unit 1	Steam	Coal/Gas	30.700	30.700	1955
Unit 2	Steam	Coal/Gas	31.000	31.000	1955
Unit 3	Steam	Coal/Gas	77.900	78.900	1961
<b>Austin Utilities</b>					
DT Plant Mower County, MN					
Unit 1	Steam	Gas	5.000	5.000	1940
Unit 2	Steam	Gas	3.500	3.500	1935
Unit 3	Steam	Gas	7.500	7.500	1946
Unit 4	Steam	Gas	10.000	10.000	1955
Unit 5	Gas Turbine	Gas	5.000	5.000	1961
Northeast Plant Mower County, MN					
Unit 1	Steam	Coal/Gas	31.500	31.500	1971
<b>Benson Municipal Utilities</b>					
Benson Municipal Utilities Swift County, MN					
Unit 5	Int Comb	Oil #2	0.900	0.900	1947
Unit 6	Int Comb	Oil #2	1.300	1.300	1954
Unit 7	Int Comb	Oil #2	1.800	1.800	2002
Unit 8	Int Comb	Oil #2	1.800	1.800	2002
Unit 9	Int Comb	Oil #2	1.800	1.800	2002
Unit 10	Int Comb	Oil #2	1.800	1.800	2002
Unit 11	Int Comb	Oil #2	1.800	1.800	2002
<b>Blooming Prairie Public Utilities</b>					
Blooming Prairie Plant Steele County, MN					
Unit 1	Int Comb	Diesel	1.600	1.600	1957
Unit 2	Int Comb	Diesel	1.300	1.300	1975
Unit 3	Int Comb	Diesel	0.600	0.600	1947
Unit 4	Int Comb	Diesel	0.300	0.300	1937
Unit 5	Int Comb	Diesel	2.000	2.000	2003

2005	Plant Profile				
	Unit Type	Fuel Type	Capacity		Year Installed
			Summer (MW)	Winter (MW)	
<b>Blue Earth Light &amp; Water</b>					
Blue Earth City Plant Faribault County, MN					
Unit 1	Int Comb	Oil #2/Gas	1.500	1.500	1960
Unit 3	Int Comb	Oil #2	1.600	1.600	1993
Unit 4	Int Comb	Oil #2	1.600	1.600	1993
Unit 5	Int Comb	Oil #2	1.600	1.600	1993
Unit 6	Int Comb	Oil #2	1.825	1.825	1995
<b>Dairyland Power Cooperative*</b>					
Alma Station Buffalo County, WI					
Unit 1	Steam	Coal/Oil #2	15.000	15.000	1947
Unit 2	Steam	Coal/Oil #2	15.000	15.000	1947
Unit 3	Steam	Coal/Oil #2	15.000	15.000	1950
Unit 4	Steam	Coal/Oil #2	54.000	54.000	1957
Unit 5	Steam	Coal/Oil #2	82.000	82.000	1960
Elk Mound Combustion Turbine Rusk County, WI					
Unit 1	Gas Turbine	Gas	36.000	48.000	2001
Unit 2	Gas Turbine	Gas	36.000	47.000	2001
Flambeau Hydroelectric Rusk County, WI					
Unit 1	Hydro	Water	6.000	6.000	1951
Unit 2	Hydro	Water	6.000	6.000	1951
Unit 3	Hydro	Water	6.000	6.000	1951
Genoa 3 (half sold to GRE) Vernon County, WI					
Unit 1	Steam	Coal/Oil #2	320.000	350.000	1969
JP Madgett Buffalo County, WI					
Unit 1	Steam	Coal/Oil #2	358.000	358.000	1979

2005	Plant Profile				
	Unit Type	Fuel Type	Capacity		Year Installed
			Summer (MW)	Winter (MW)	
<b>Delano Municipal Utilities</b>					
Delano Municipal Plant Wright County, MN					
Unit 1	Int Comb	Oil #2	0.840	0.840	1946
Unit 3	Int Comb	Oil #2	1.136	1.136	1951
Unit 4	Int Comb	Gas/Oil #2	1.140	1.140	1972
Unit 5	Int Comb	Gas/Oil #2	1.365	1.365	1973
Unit 6	Int Comb	Oil #2	1.250	1.250	1989
Unit 7	Int Comb	Oil #2	3.000	3.000	1994
Unit 8	Int Comb	Oil #2	3.125	3.125	1998
Unit 9	Int Comb	Oil #2	12.000	12.000	2002
<b>Detroit Lakes Public Utilities</b>					
Jet Plant Becker County, MN					
Unit 1	Gas Turbine	Diesel	8.860	8.860	1968
<b>East Grand Forks Water and Light Dept</b>					
Distribution Service Center Polk County, MN					
Unit 1	Int Comb	Diesel	0.800	0.800	2002
Water Treatment Plant Polk County, MN					
Unit 1	Int Comb	Diesel	0.750	0.750	2002
<b>Elk River Municipal Utilities</b>					
Elk River Municipal Utilities Diesel Plant Sherburne County, MN					
Unit 1	Int Comb	Diesel	0.500	0.500	1948
Unit 2	Int Comb	Diesel	0.500	0.500	1948
Unit 3	Int Comb	Diesel/Gas	3.000	3.000	1962
Unit 4	Int Comb	Diesel/Gas	5.000	5.000	1972
<b>Fairfax, City of</b>					
Fairfax Municipal Power Plant Renville County, MN					
Unit 2A	Int Comb	Oil #2	1.820	1.820	2001

2005	Plant Profile				
	Unit Type	Fuel Type	Capacity		Year Installed
			Summer (MW)	Winter (MW)	
<b>Fairmont Public Utilities</b>					
Fairmont Power Plant Martin County, MN					
Unit 3	Steam	Gas	5.000	5.000	1945
Unit 4	Steam	Gas	5.000	5.000	1949
Unit 5	Steam	Gas	12.500	12.500	1959
Unit 6	Int Comb	Gas/Oil #2	6.000	6.000	1975
Unit 7	Int Comb	Gas/Oil #2	6.000	6.000	1975
<b>Glencoe Light and Power Commission</b>					
Glencoe Municipal Electric Plant McLeod County, MN					
Unit 5	Int Comb	Oil #2/Gas	1.100	1.100	1957
Unit 6	Int Comb	Oil #2/Gas	1.100	1.100	1961
Unit 7	Int Comb	Oil #2/Gas	3.900	3.900	1966
Unit 8	Int Comb	Oil #2/Gas	5.600	5.600	1969
Unit 9	Int Comb	Oil #2/Gas	7.100	7.100	1973
Unit 10	Int Comb	Diesel	6.700	6.700	1985
Unit 11	Int Comb	Diesel	4.600	4.600	1998
Unit 12	Int Comb	Diesel	4.600	4.600	1998
<b>Grand Marais Public Utilities</b>					
Grand Marais Power Plant Cook County, MN					
Unit 1	Int Comb	Oil #2	2.250	2.250	2004
Unit 2	Int Comb	Oil #2	1.875	1.875	2004
Unit 3	Int Comb	Oil #2	1.875	1.875	2004
<b>Granite Falls Municipal Utilities</b>					
Granite Falls Municipal Hydroelectric Yellow Medicine County, MN					
Unit 1	Hydro	Water	0.300	0.300	1940
Unit 2	Hydro	Water	0.250	0.250	1932
Unit 3	Hydro	Water	0.867	0.867	1986



2005	Plant Profile				
	Unit Type	Fuel Type	Capacity		Year Installed
			Summer (MW)	Winter (MW)	
<b>Granite Falls Municipal Utilities, continued</b>					
Granite Falls Diesel Yellow Medicine County, MN					
Unit 1	Int Comb	Diesel	2.200	2.200	2002
Unit 2	Int Comb	Diesel	2.200	2.200	2002
Unit 3	Int Comb	Diesel	2.200	2.200	2002
<b>Great River Energy</b>					
Cambridge Gas Turbine Plant Isanti County, MN					
Unit 1	Gas Turbine	Oil #2	21.000	27.000	1978
Coal Creek Diesel McLean County, ND					
Unit 1	Int Comb	Diesel	2.100	2.100	1979
Coal Creek Station McLean County, ND					
Unit 1	Steam	Coal	555.000	554.000	1979
Unit 2	Steam	Coal	561.000	560.000	1980
Elk River Station Sherburne County, MN					
Unit 1	Steam	RDF/Gas/Oil #2	8.500	8.500	1951
Unit 2	Steam	RDF/Gas/Oil #2	8.200	8.200	1951
Unit 3	Steam	RDF/Gas/Oil #2	16.500	16.500	1959
Lakefield Junction Martin County, MN					
Unit 1	Gas Turbine	Gas/Oil #2	88.000	93.000	2001
Unit 2	Gas Turbine	Gas/Oil #2	88.000	93.000	2001
Unit 3	Gas Turbine	Gas/Oil #2	88.000	93.000	2001
Unit 4	Gas Turbine	Gas/Oil #2	88.000	93.000	2001
Unit 5	Gas Turbine	Gas/Oil #2	88.000	93.000	2001
Unit 6	Gas Turbine	Gas/Oil #2	88.000	93.000	2001
Maple Lake Wright County, MN					
Unit 1	Gas Turbine	Oil #2	20.000	25.000	1978

2005	Plant Profile				
	Unit Type	Fuel Type	Capacity		Year Installed
			Summer (MW)	Winter (MW)	
<b>Great River Energy, continued</b>					
Pleasant Valley Station Mower County, MN					
Unit 11	Gas Turbine	Gas/Oil #2	156.000	172.000	2001
Unit 12	Gas Turbine	Gas/Oil #2	154.000	172.000	2001
Unit 13	Gas Turbine	Gas/Oil #2	120.000	124.000	2002
Rock Lake Pine County, MN					
Unit 1	Gas Turbine	Oil #2	22.000	26.000	1978
St. Bonifacious Power Plant Carver County, MN					
Unit 1	Gas Turbine	Oil #2	50.000	50.000	1978
Stanton Station Steam Plant Mercer County, ND					
Unit 1	Steam	Coal/Oil #2	187.800	187.800	1966
<b>Halstad Municipal Utilities</b>					
Halstad Diesel Plant Norman County, MN					
Unit 1	Int Comb	Oil #2	0.580	0.580	1954
Unit 2	Int Comb	Oil #2	0.300	0.300	1946
Unit 3	Int Comb	Oil #2	0.200	0.200	1939
<b>Hastings Public Utilities Commission</b>					
Hastings Hydroelectric Facility Dakota County, MN					
Unit 1	Hydro	Water	2.200	2.200	1987
Unit 2	Hydro	Water	2.200	2.200	1987

2005	Plant Profile				
	Unit Type	Fuel Type	Capacity		Year Installed
			Summer (MW)	Winter (MW)	
<b>Hawley Public Utilities</b>					
Hawley Plant Clay County, MN					
Unit 1	Int Comb	Oil #2	0.100	0.100	1932
Unit 2	Int Comb	Oil #2	0.700	0.700	1957
Unit 3	Int Comb	Oil #2	0.100	0.100	1938
Unit 4	Int Comb	Oil #2	0.300	0.300	1947
Unit 5	Int Comb	Oil #2	0.300	0.300	1947
<b>Hibbing Public Utilities</b>					
Hibbing Public Utilities Plant St. Louis County, MN					
Unit 3	Steam	Coal/Gas	11.500	11.500	1965
Unit 5	Steam	Coal/Gas	20.500	20.500	1984
Unit 6	Steam	Coal/Gas	1.500	6.000	1996
<b>Hutchinson Utilities Commission</b>					
Hutchinson Municipal Plant No. 1 McLeod County, MN					
Unit 2	Int Comb	Gas/Oil #2	1.970	1.970	1958
Unit 3	Int Comb	Gas/Oil #2	3.900	3.900	1968
Unit 4	Int Comb	Gas/Oil #2	3.900	3.900	1968
Unit 5	Int Comb	Oil #2	1.740	1.740	1941
Unit 6	Int Comb	Oil #2	1.740	1.740	1942
Unit 7	Int Comb	Gas/Oil #2	4.500	4.500	1965
Unit 8	Comb Cycle	Gas/Oil #2	11.000	13.300	1971
Hutchinson Municipal Plant No. 2 McLeod County, MN					
Unit 1	Comb Cycle	Gas	41.000	41.000	1994
Unit 2	Comb Cycle	Steam	10.000	10.000	1994
Unit 9	Gas Turbine	Gas/Oil #2	22.000	24.000	1977

2005	Plant Profile				
	Unit Type	Fuel Type	Capacity		Year Installed
			Summer (MW)	Winter (MW)	
<b>Janesville Municipal Utilities</b>					
Janesville Municipal Plant Waseca County, MN					
Unit 1	Int Comb	Oil #2/Gas	1.600	1.600	1972
Unit 2	Int Comb	Oil #2/Gas	1.100	1.100	1964
Unit 3	Int Comb	Oil #2/Gas	0.600	0.600	1955
Unit 4	Int Comb	Oil #2	1.800	1.800	1998
<b>Kenyon Municipal Utility</b>					
Kenyon Municipal Plant Goodhue, MN					
Unit 5	Int Comb	Oil #2	1.825	1.825	1997
Unit 6	Int Comb	Oil #2	1.825	1.825	1997
Unit 7	Int Comb	Oil #2	1.825	1.825	1997
<b>Lake Crystal Municipal Utilities</b>					
Lake Crystal Plant Blue Earth County, MN					
Unit 1	Int Comb	Gas/Oil #2	0.700	0.700	1952
Unit 3	Int Comb	Gas/Oil #2	2.100	2.100	1971
Unit 4	Int Comb	Gas/Oil #2	1.300	1.300	1955
Unit 5	Int Comb	Oil #2	1.800	1.800	1999
<b>Lakefield Public Utilities</b>					
Lakefield Power Plant Jackson County, MN					
Unit 5	Int Comb	Fuel Oil #2	1.000	1.000	1986
Unit 6	Int Comb	Fuel Oil #2	2.000	2.200	2003
<b>Lanesboro Public Utilities</b>					
Lanesboro Power Plant Fillmore County, MN					
Nordberg	Int Comb	Diesel	0.800	0.800	1968
Fairbanks	Int Comb	Diesel	2.200	2.300	2004
Lanesboro Power Plant - Hydroelectric Fillmore County, MN					
Unit 1	Hydro	Water	0.200	0.200	1923

2005	Plant Profile				
	Unit Type	Fuel Type	Capacity		Year Installed
			Summer (MW)	Winter (MW)	
<b>Litchfield Public Utilities</b>					
Litchfield Power Plant Meeker County, MN					
Unit 1	Int Comb	Diesel/Gas	2.100	2.100	1962
Unit 2	Int Comb	Diesel/Gas	2.000	2.000	1962
<b>Madelia Municipal Light &amp; Power</b>					
Madelia Municipal Plant Watonswan County, MN					
Unit 1	Int Comb	Oil #2/Gas	2.800	3.160	2001
Unit 2	Int Comb	Oil #2/Gas	1.700	2.000	1966
Unit 3	Int Comb	Oil #2/Gas	0.800	0.800	1959
Unit 4	Int Comb	Oil #2/Gas	3.750	4.000	1973
Unit 5	Int Comb	Oil #2/Gas	1.200	1.200	1954
<b>Marshall Municipal Utilities</b>					
Marshall Power Plant Lyon County, MN					
Unit 6	Gas Turbine	Oil #2	15.000	19.000	1969
<b>Melrose Public Utilities</b>					
Melrose Power Plant Stearns County, MN					
Unit 1	Int Comb	Oil #2	0.750	0.750	1945
Unit 2	Int Comb	Oil #2	0.825	0.825	1948
Unit 3	Int Comb	Oil #2/Gas	3.000	3.000	1969
Unit 4	Int Comb	Oil #2/Gas	3.000	3.000	1969
<b>Minnesota Power Company</b>					
Blanchard Hydroelectric Station Morrison County, MN					
Unit 1	Hydro	Water	6.000	6.000	1925
Unit 2	Hydro	Water	6.000	6.000	1925
Unit 3	Hydro	Water	6.000	6.000	1988

2005	Plant Profile				
	Unit Type	Fuel Type	Capacity		Year Installed
			Summer (MW)	Winter (MW)	
<b>Minnesota Power Company, continued</b>					
Boswell EC Itasca County, MN					
Unit 1	Steam	Coal/Oil #2	69.000	69.000	1958
Unit 2	Steam	Coal/Oil #2	69.000	69.000	1960
Unit 3	Steam	Coal/Oil #2	350.000	350.000	1973
Unit 4	Steam	Coal/Oil #2	425.000	425.000	1980
Fond Du Lac Hydroelectric Station St. Louis County, MN					
Unit 1	Hydro	Water	12.000	12.000	1924
Knife Falls Hydro Station Carlton County, MN					
Unit 1	Hydro	Water	0.800	0.800	1922
Unit 2	Hydro	Water	0.800	0.800	1922
Unit 3	Hydro	Water	0.800	0.800	1922
Laskin EC St. Louis County, MN					
Unit 1	Steam	Coal/Oil #2	55.000	55.000	1953
Unit 2	Steam	Coal/Oil #2	55.000	55.000	1953
Little Falls Hydro Station Morrison County, MN					
Unit 1	Hydro	Water	0.800	0.800	1919
Unit 2	Hydro	Water	0.800	0.800	1919
Unit 3	Hydro	Water	1.100	1.100	1920
Unit 4	Hydro	Water	1.200	1.200	1979
Unit 5	Hydro	Water	0.400	0.400	1906
Unit 6	Hydro	Water	0.400	0.400	1906
M.L. Hibbard Steam Station St. Louis County, MN					
Unit 3	Steam	Coal/Wood	32.480	32.480	1949
Unit 4	Steam	Coal/Wood	24.300	24.300	1951
Pillager Hydro Station Cass County, MN					
Unit 1	Hydro	Water	0.800	0.800	1917
Unit 2	Hydro	Water	0.800	0.800	1917

2005	Plant Profile				
	Unit Type	Fuel Type	Capacity		Year Installed
			Summer (MW)	Winter (MW)	
<b>Minnesota Power Company, continued</b>					
Prairie River Hydroelectric Station Itasca County, MN					
Unit 1	Hydro	Water	0.700	0.700	1921
Unit 2	Hydro	Water	0.400	0.400	1921
Rapids Energy Center Itasca County, MN					
Unit 4	Hydro	Water	0.750	0.750	1917
Unit 5	Hydro	Water	1.500	1.500	1948
Unit 6	Steam	Gas/Wood/Coal	13.400	13.400	1969
Unit 7	Steam	Gas/Wood/Coal	11.700	11.700	1980
Sappi Cloquet Turbine Generator 5 Carlton County, MN					
Unit 5	Steam	Wood/Gas	23.000	23.000	2001
Scanlon Hydroelectric Station Carlton County, MN					
Unit 1	Hydro	Water	0.400	0.400	1923
Unit 2	Hydro	Water	0.400	0.400	1923
Unit 3	Hydro	Water	0.400	0.400	1923
Unit 4	Hydro	Water	0.400	0.400	1923
Sylvan Hydroelectric Station Cass County, MN					
Unit 1	Hydro	Water	0.600	0.600	1913
Unit 2	Hydro	Water	0.600	0.600	1913
Unit 3	Hydro	Water	0.600	0.600	1931
Taconite Harbor Cook County, MN					
Unit 1	Steam	Coal/Oil #2	75.000	75.000	1953
Unit 2	Steam	Coal/Oil #2	75.000	75.000	1953
Unit 3	Steam	Coal/Oil #2	75.000	75.000	1954

2005	Plant Profile				
	Unit Type	Fuel Type	Capacity		Year Installed
			Summer (MW)	Winter (MW)	
<b>Minnesota Power Company, continued</b>					
Thomson Hydro Station Carlton County, MN					
Unit 1	Hydro	Water	13.000	13.000	1907
Unit 2	Hydro	Water	13.000	13.000	1907
Unit 3	Hydro	Water	13.000	13.000	1907
Unit 4	Hydro	Water	10.800	10.800	1914
Unit 5	Hydro	Water	10.800	10.800	1918
Unit 6	Hydro	Water	12.000	12.000	1949
Winton Hydro Station Lake County, MN					
Unit 2	Hydro	Water	2.000	2.000	1923
Unit 3	Hydro	Water	2.000	2.000	1923
<b>Minnkota Power Cooperative, Inc.</b>					
Coyote Station Mercer County, ND					
Unit 1	Steam	Coal/Oil #2	299.900	299.900	1981
Grand Forks Diesel Plant Grand Forks County, ND					
Unit 1	Int Comb	Oil #2	0.679	0.679	1941
Unit 2	Int Comb	Oil #2	0.679	0.679	1941
Unit 3	Int Comb	Oil #2	0.679	0.679	1941
Unit 4	Int Comb	Oil #2	0.970	0.970	1946
Unit 5	Int Comb	Oil #2	0.970	0.970	1946
Unit 6	Int Comb	Oil #2	0.970	0.970	1946
Unit 7	Int Comb	Oil #2	1.067	1.067	1949
Unit 8	Int Comb	Oil #2	1.067	1.067	1949
Unit 9	Int Comb	Oil #2	1.067	1.067	1949
Unit 10	Int Comb	Oil #2	1.067	1.067	1949
Unit 11	Int Comb	Oil #2	1.067	1.067	1949
Harwood Diesel Plant Cass County, ND					
Unit 1	Int Comb	Oil #2	1.455	1.455	1957
Unit 2	Int Comb	Oil #2	1.552	1.552	1947
Unit 3	Int Comb	Oil #2	1.552	1.552	1947



2005	Plant Profile				
	Unit Type	Fuel Type	Capacity		Year Installed
			Summer (MW)	Winter (MW)	
<b>Minnkota Power Coop, Inc., continued</b>					
Infinity Wind Valley City Grand Forks County, ND					
Unit 1	Wind Turbine	Wind	0.900	0.900	2002
Infinity Wind Petersburg Grand Forks County, ND					
Unit 1	Wind Turbine	Wind	0.900	0.900	2002
Milton R. Young (29% share of Unit 2) Oliver County, ND					
Unit 1	Steam	Coal/Oil #2	250.000	250.000	1970
Unit 2	Steam	Coal/Oil #2	448.000	455.000	1977
<b>Moorhead, City of</b>					
Moorhead Power Plant Clay County, MN					
Unit 6	Gas Turbine	Oil #2	10.000	10.000	1960
Unit 8	Wind Turbine	Wind	0.750	0.750	1999
Unit 9	Wind Turbine	Wind	0.750	0.750	2001
<b>Moose Lake Water &amp; Light Commission</b>					
Moose Lake Municipal Plant Carlton County, MN					
Unit 1	Int Comb	Oil #2	1.360	1.360	1973
Unit 2	Int Comb	Oil #2	1.136	1.136	1953
Unit 4	Int Comb	Oil #2	1.360	1.360	1962
Unit 1 South	Int Comb	Oil #2	2.000	2.000	2005
Unit 2 South	Int Comb	Oil #2	2.000	2.000	2005
Unit 3	Int Comb	Oil #2	2.000	2.000	2005
<b>Mora Municipal Utilities</b>					
Mora Power Plant Kanabec County, MN					
Unit 2	Int Comb	Diesel/Gas	1.200	1.200	1947
Unit 5	Int Comb	Diesel/Gas	5.800	5.800	1971
Unit 6	Int Comb	Diesel/Gas	6.400	6.400	1974

2005	Plant Profile				
			Capacity		
	Unit Type	Fuel Type	Summer (MW)	Winter (MW)	Year Installed
<b>New Prague Utilities Commission</b>					
New Prague Power Plant LeSueur County, MN					
Unit 1	Int Comb	Diesel	0.900	0.900	1949
Unit 2	Int Comb	Diesel/Gas	4.400	4.400	1974
Unit 3	Int Comb	Diesel/Gas	2.400	2.400	1963
Unit 4	Int Comb	Diesel/Gas	3.500	3.500	1968
Unit 5	Int Comb	Gas	0.400	0.400	1943
Unit 6	Int Comb	Diesel/Gas	6.000	6.000	1981
<b>New Ulm Public Utilities</b>					
New Ulm Gas Turbine Plant Brown County, MN					
Unit 5	Gas Turbine	Oil #2	23.000	25.400	1975
Unit 7	Gas Turbine	Oil #2	25.000	27.000	2001
New Ulm Steam Plant Brown County, MN					
Unit 3	Steam	Coal/Gas	4.700	4.700	1957
Unit 4	Steam	Coal/Gas	13.200	13.200	1963
Unit 6	Steam	Coal/Gas	4.700	4.300	1947
<b>North Branch Water &amp; Light</b>					
North Branch Plant Chisago County, MN					
Unit 1	Int Comb	Diesel/Gas	0.900	0.900	1960
Unit 2	Int Comb	Diesel/Gas	1.300	1.300	1971
Unit 3	Int Comb	Diesel	2.000	2.000	2003
Unit 4	Int Comb	Diesel	2.000	2.000	2003

2005	Plant Profile				
	Unit Type	Fuel Type	Capacity		Year Installed
			Summer (MW)	Winter (MW)	
<b>Otter Tail Power Company</b>					
Bemidji Hydroelectric Beltrami County, MN					
Unit 1	Hydro	Water	0.190	0.175	1907
Unit 2	Hydro	Water	0.600	0.600	1907
Big Stone Plant Grant County, SD					
Unit 1	Steam	Coal/RDF	248.210	256.025	1975
Unit 2	Int Comb	Oil #2	0.625	0.629	1975
Coyote Station (35% share) Mercer County, ND					
Unit 1	Steam	Coal/Oil #2	149.450	149.450	1981
Dayton Hollow Hydro Otter Tail County, MN					
Unit 1	Hydro	Water	0.538	0.549	1909
Unit 2	Hydro	Water	0.478	0.468	1919
Fergus Control Center Otter Tail County, MN					
Unit 1	Int Comb	Oil #2	2.100	2.088	1995
Hoot Lake Hydroelectric Otter Tail County, MN					
Unit 1	Hydro	Water	0.790	0.750	1914
Hoot Lake Steam Plant Otter Tail County, MN					
Unit 1	Steam	Coal/Oil #2	7.525	7.725	1948
Unit 2	Steam	Coal/Oil #2	60.925	61.975	1959
Unit 2A	Int Comb	Oil #2	0.263	0.255	1959
Unit 3	Steam	Coal/Oil #2	84.000	84.000	1964
Unit 3A	Int Comb	Oil #2	0.175	0.138	1964
Jamestown Turbine Stutsman County, ND					
Unit 1	Int Comb	Oil #2	21.734	28.800	1976
Unit 2	Int Comb	Oil #2	21.169	27.719	1978
Lake Preston Turbine Kingsbury County, SK					
Unit 1	Int Comb	Oil #2	19.921	27.220	1978

2005	Plant Profile				
	Unit Type	Fuel Type	Capacity		Year Installed
			Summer (MW)	Winter (MW)	
<b>Otter Tail Power Company, continued</b>					
Pisgah Hydroelectric Otter Tail County, MN					
Unit 1	Hydro	Water	0.708	0.710	1918
Potlatch Cogeneration Beltrami County, MN					
Unit 1	Steam	Wood Waste/REF	5.661	5.862	1992
Solway Beltrami County, MN					
Unit 1	Gas Turbine	Gas/Oil #2	43.573	48.435	2003
Taplin Gorge Hydroelectric Otter Tail County, MN					
Unit 1	Hydro	Water	0.520	0.520	1925
Wright Hydroelectric Otter Tail County, MN					
Unit 1	Hydro	Water	0.503	0.489	1922
<b>Preston Public Utilities</b>					
Preston Power Plant Fillmore County, MN					
Unit 4	Int Comb	Diesel	0.600	0.600	1949
Unit 5	Int Comb	Diesel	1.000	1.000	1957
Unit 6	Int Comb	Diesel/Gas	2.000	2.000	1973
<b>Princeton Public Utilities</b>					
Princeton Power Plant Mille Lacs County, MN					
Unit 3	Int Comb	Oil #2	2.400	2.400	1977
Unit 4	Int Comb	Oil #2	1.200	1.200	1967
Unit 5	Int Comb	Oil #2	1.000	1.000	1953
Unit 6	Int Comb	Oil #2	2.700	2.700	1963
Unit 7	Int Comb	Oil #2/Gas	5.000	5.000	2002

2005	Plant Profile				
			Capacity		
	Unit Type	Fuel Type	Summer (MW)	Winter (MW)	Year Installed
<b>Redwood Falls Public Utilities Commission</b>					
Redwood Falls Power Plant Redwood County, MN					
Unit 1A	Hydro	Water	0.500	0.500	1930
Unit 7	Int Comb	Diesel/Gas	5.800	5.800	1974
Southside Substation Plant Redwood County, MN					
Unit 2	Int Comb	Diesel	2.250	2.250	1968
Unit 3	Int Comb	Diesel	2.000	2.000	2002
Unit 4	Int Comb	Diesel	2.000	2.000	2002
Unit 5	Int Comb	Diesel	2.000	2.000	2002
<b>Rochester Public Utilities</b>					
Cascade Creek Olmsted County, MN					
Unit 1	Gas Turbine	Gas/Oil #6	30.600	30.600	1974
Unit 2	Gas Turbine	Gas/Oil #6	48.500	48.500	2002
Lake Zumbro Hydro Wabasha County, MN					
Unit 1	Hydro	Water	1.300	1.000	1984
Unit 2	Hydro	Water	1.300	1.000	1984
Silver Lake Steam Plant Olmsted County, MN					
Unit 1	Steam	Coal/Gas	9.000	9.000	1949
Unit 2	Steam	Coal/Gas	14.000	14.000	1953
Unit 3	Steam	Coal/Gas	24.000	24.000	1962
Unit 4	Steam	Coal/Gas	61.000	61.000	1969
<b>Roseau Municipal Water &amp; Light*</b>					
Roseau Municipal Power Plant Roseau County, MN					
Unit 1	Int Comb	Oil #2	1.400	1.400	1956
Unit 2	Int Comb	Oil #2	1.136	1.136	1949
Unit 3	Int Comb	Oil #2	0.550	0.550	1946

2005	Plant Profile				
			Capacity		
	Unit Type	Fuel Type	Summer (MW)	Winter (MW)	Year Installed
<b>St. James Municipal Light &amp; Power</b>					
Diesel Generation Plant Watsonwan County, MN					
Unit 1	Int Comb	Diesel	2.000	2.000	2002
Unit 2	Int Comb	Diesel	2.000	2.000	2002
Unit 3	Int Comb	Diesel	2.000	2.000	2002
Unit 4	Int Comb	Diesel	2.000	2.000	2002
Unit 5	Int Comb	Diesel	2.000	2.000	2002
Unit 6	Int Comb	Diesel	2.000	2.000	2002
<b>Sleepy Eye Public Utilities</b>					
Sleepy Eye Power Plant Brown County, MN					
Unit 1	Int Comb	Oil #2	1.800	1.800	1999
Unit 2	Int Comb	Oil #2	1.800	1.800	2001
Unit 3	Int Comb	Oil #2	1.500	1.500	1961
Unit 4	Int Comb	Oil #2	1.800	1.800	1995
Unit 5	Int Comb	Oil #2	1.800	1.800	1996
<b>Southern Minnesota Municipal Power Agency</b>					
Blooming Prairie Plant Steele County, MN					
Unit 1	Int Comb	Oil #2/Gas	1.000	1.000	1957
Unit 2	Int Comb	Oil #2/Gas	1.300	1.300	1975
Unit 3	Int Comb	Oil #2/Gas	0.400	0.400	1975
Unit 5	Int Comb	Oil #2/Gas	2.000	2.000	2003
Fairmont Wind Farm Martin County, MN					
Unit 1	Wind Turbine	Wind	1.000	1.000	2003
Unit 2	Wind Turbine	Wind	1.000	1.000	2003
Unit 3	Wind Turbine	Wind	1.700	1.700	2004
Unit 4	Wind Turbine	Wind	1.700	1.700	2005
Owatonna Downtown Steele County, MN					
Unit 6	Steam	Gas	22.200	21.400	1969

2005	Plant Profile				
			Capacity		
	Unit Type	Fuel Type	Summer (MW)	Winter (MW)	Year Installed
<b>Southern Minnesota Municipal Power Agency, continued</b>					
Owatonna West Sub. Steele County, MN					
Unit 7	Gas Turbine	Gas	16.100	20.700	1982
Redwood Falls Diesel Plant Redwood County, MN					
Unit 1	Int Comb	Oil #2/Gas	2.300	2.300	1970
Unit 2	Int Comb	Oil #2/Gas	6.600	6.300	1974
Unit 3	Int Comb	Oil #2/Gas	2.000	2.000	
Unit 4	Int Comb	Oil #2/Gas	2.000	2.000	
Unit 5	Int Comb	Oil #2/Gas	2.000	2.000	
Redwood Falls Wind Farm Redwood County, MN					
Unit 1	Wind Turbine	Wind	1.700	1.700	2004
Unit 2	Wind Turbine	Wind	1.700	1.700	2005
St. Peter Nicollet County, MN					
Units 1 - 6	Int Comb	Oil #2	12.000	12.000	2003
Sherburne Steam Plant (41% share) Sherburne County, MN					
Unit 3	Steam	Coal/Oil #2	362.000	365.000	1988
SW Sub Ziegler Temps Mower County, MN					
Units 1 - 5	Steam	Diesel	10.000		2001
<b>Spring Valley Public Utilities Commission</b>					
Spring Valley Plant Fillmore County, MN					
Unit 1	Int Comb	Gas/Oil #2	0.840	0.840	1949
Unit 2	Int Comb	Gas/Oil #2	1.136	1.136	1952
Unit 3	Int Comb	Gas/Oil #2	2.000	2.000	1960

2005	Plant Profile				
			Capacity		
	Unit Type	Fuel Type	Summer (MW)	Winter (MW)	Year Installed
<b>Springfield Public Utilities Commission</b>					
Springfield Municipal Plant Brown County, MN					
Unit 5	Int Comb	Diesel	1.825	1.825	1994
Unit 6	Int Comb	Diesel	1.825	1.825	1996
Unit 7	Int Comb	Diesel	1.825	1.825	1998
Unit 8	Int Comb	Diesel	1.825	1.825	1998
Unit 9	Int Comb	Diesel	1.825	1.825	2001
<b>Steele Waseca Cooperative Electric*</b>					
Windmills Co-Generators Steele County, MN					
Unit 1	Wind	Wind	0.004	0.004	1984
Unit 2	Wind	Wind	0.018	0.018	1984
Unit 3	Wind	Wind	0.025	0.025	1996
Unit 4	Wind	Wind	0.035	0.035	1997
Unit 5	Wind	Wind	0.039	0.039	2002
Unit 6	Wind	Wind	0.039	0.039	2002
Unit 7	Wind	Wind	0.039	0.039	2002
Unit 8	Wind	Wind	0.020	0.020	2002
Unit 9	Wind	Wind	0.039	0.039	2002
Unit 10	Wind	Wind	0.039	0.039	2002
Unit 11	Wind	Wind	0.039	0.039	2003
Unit 12	Wind	Wind	0.039	0.039	2003
<b>Thief River Falls Municipal Utility</b>					
Thief River Falls Municipal Power Plant Pennington County, MN					
Unit 1	Hydro	Water	0.250	0.250	1927
Unit 2	Hydro	Water	0.300	0.300	1927
Thief River Falls Municipal Power Plant Pennington County, MN					
Unit 1	Int Comb	Oil #2	1.300	1.300	1956
Unit 2	Int Comb	Oil #2	1.100	1.100	1953
Unit 3	Int Comb	Oil #2	1.270	1.270	2000
Unit 4	Int Comb	Oil #2	2.000	2.000	1946



2005	Plant Profile				
	Unit Type	Fuel Type	Capacity		Year Installed
			Summer (MW)	Winter (MW)	
<b>Truman Public Utilities*</b>					
Truman Municipal Plant Martin County, MN					
Unit 1	Int Comb	Gas/Diesel	0.200	0.200	1938
Unit 2	Int Comb	Gas/Diesel	0.200	0.200	1938
Unit 3	Int Comb	Gas/Diesel	2.300	2.300	1975
Unit 4	Int Comb	Gas/Diesel	0.700	0.700	1954
Unit 5	Int Comb	Gas/Diesel	0.700	0.700	1960
Unit 6	Int Comb	Gas/Diesel	1.850	1.850	1998
<b>Two Harbors Water &amp; Light</b>					
Two Harbors Plant Lake County, MN					
Unit 1	Int Comb	Diesel	2.000	2.000	1971
<b>Virginia Public Utilities</b>					
Virginia Power Plant St. Louis County, MN					
Unit 1	Steam	Coal/Gas	4.000	4.000	1947
Unit 5	Steam	Coal/Gas	8.300	8.300	1953
Unit 6	Steam	Coal/Gas	18.500	18.500	1971
<b>Warren, City of*</b>					
Warren Plant Marshall County, MN					
Unit 1	Int Comb	Diesel	0.500	0.575	1953
Unit 2	Int Comb	Diesel	1.000	1.150	1943
Unit 3	Int Comb	Diesel	0.200	0.300	1941
Unit 4	Int Comb	Diesel	0.100	0.200	1935
<b>Wells Public Utilities</b>					
Wells Plant Fairbault County, MN					
Unit 1	Int Comb	Oil #2/Gas	1.400	1.400	1953
Unit 2	Int Comb	Oil #2/Gas	1.500	1.500	1957
Unit 3	Int Comb	Oil #2/Gas	1.000	1.000	1950
Unit 4	Int Comb	Oil #2/Gas	2.300	2.300	1966
Unit 5	Int Comb	Oil #2/Gas	2.200	2.200	1975

2005	Plant Profile				
			Capacity		
	Unit Type	Fuel Type	Summer (MW)	Winter (MW)	Year Installed
<b>Westbrook Public Utilities</b>					
Westbrook Plant Cottonwood County, MN					
Unit 4	Int Comb	Oil #2	0.700	0.700	1955
Unit 5	Int Comb	Oil #2	2.200	2.200	2001
<b>Willmar Municipal Utilities</b>					
Willmar Plant Kandiyohi County, MN					
Unit 1	Steam	Coal/Gas	4.000	4.000	1947
Unit 2	Steam	Coal/Gas	7.000	7.000	1952
Unit 3	Steam	Coal/Gas	16.000	8.000	1959
Unit 4	Int Comb	Oil #2	12.000	12.000	2000
<b>Windom Municipal Utilities</b>					
Windom Gas Turbine Cottonwood County, MN					
Unit 1	Gas Turbine	Oil #2	2.500	3.000	1980
Unit 2	Int Comb	Oil #2	1.700	1.800	2001
Unit 3	Int Comb	Oil #2	1.700	1.800	2001
Unit 4	Int Comb	Oil #2	1.700	1.800	2001
<b>Worthington Public Utilities</b>					
Worthington Diesel Generating Plant Nobles County, MN					
Unit 1	Int Comb	Diesel	14.000	14.000	2002
<b>Xcel Energy</b>					
Allen S. King Washington County, MN					
Unit 1	Steam	Coal/Wood/Gas	573.000	583.000	1968
Alliant Tech Systems Hennepin County, MN					
Unit 1 & 2	Int Comb	Oil #2	1.650	1.650	1993
Angus Anson Minnehaha County, SD					
Unit 2	Gas Turbine	Gas/Oil #2	108.600	128.000	1994
Unit 3	Gas Turbine	Gas/Oil #2	109.000	128.000	1994
Unit 4	Gas Turbine	Gas/Oil #2	131.000	158.400	2005

2005	Plant Profile				
	Unit Type	Fuel Type	Capacity		Year Installed
			Summer (MW)	Winter (MW)	
<b>Xcel Energy, continued</b>					
Apple River Hydro St. Croix County, WI					
Unit 1	Hydro	Water	0.970	0.970	1900
Unit 2	Hydro	Water	1.060	1.060	1900
Unit 3	Hydro	Water	1.080	1.080	1900
Bayfront Steam Ashland County, WI					
Unit 3	Steam	Wood/Coal/Gas	22.400	17.600	1949
Unit 4	Steam	Wood/Coal/Gas	22.000	16.800	1952
Unit 5	Steam	Wood/Coal/Gas	26.600	26.300	1957
Big Falls Hydroelectric Rusk County, WI					
Unit 1	Hydro	Water	2.300	2.300	1922
Unit 2	Hydro	Water	2.300	2.300	1922
Unit 3	Hydro	Water	2.500	2.500	1925
Black Dog Steam Dakota County, MN					
Unit 2	Steam	Coal/Gas	130.700	131.500	1954
Unit 3	Steam	Coal/Gas	112.200	89.800	1955
Unit 4	Steam	Coal/Gas	177.800	178.700	1960
Unit 5	Gas Turbine	Gas	169.000	198.700	2002
Blue Lake Gas Turbine Scott County, MN					
Unit 1	Gas Turbine	Oil #2	40.700	55.600	1974
Unit 2	Gas Turbine	Oil #2	42.100	54.200	1974
Unit 3	Gas Turbine	Oil #2	39.800	55.000	1974
Unit 4	Gas Turbine	Oil #2	50.900	65.200	1974
Unit 7	Gas Turbine	Oil #2	158.830		2005
Unit 8	Gas Turbine	Oil #2	156.970		2005
Cedar Falls Hydro Dunn County, WI					
Unit 1	Hydro	Water	2.550	2.550	1910
Unit 2	Hydro	Water	2.200	2.200	1911
Unit 3	Hydro	Water	2.250	2.250	1915

2005	Plant Profile				
	Unit Type	Fuel Type	Capacity		Year Installed
			Summer (MW)	Winter (MW)	
<b>Xcel Energy, continued</b>					
Chippewa Falls Hydro Chippewa County, WI					
Unit 1	Hydro	Water	3.680	3.680	1928
Unit 2	Hydro	Water	3.700	3.700	1928
Unit 3	Hydro	Water	3.750	3.750	1928
Unit 4	Hydro	Water	3.650	3.650	1928
Unit 5	Hydro	Water	2.610	2.610	1928
Unit 6	Hydro	Water	3.740	3.740	1928
Cornell Hydroelectric Chippewa County, WI					
Unit 1	Hydro	Water	9.840	9.840	1976
Unit 2	Hydro	Water	10.000	10.000	1976
Unit 3	Hydro	Water	10.340	10.340	1976
Unit 4	Hydro	Water	0.690	0.690	1976
Dells Hydroelectric Eau Claire County, WI					
Unit 1	Hydro	Water	2.340	2.340	1923
Unit 2	Hydro	Water	1.190	1.190	1924
Unit 3	Hydro	Water	1.290	1.290	1930
Unit 4	Hydro	Water	1.290	1.290	1930
Unit 5	Hydro	Water	1.240	1.240	1930
Unit 6	Hydro	Water	0.620	0.620	1916
Unit 7	Hydro	Water	0.730	0.730	1907
Flambeau Price County, WI					
Unit 1	Gas Turbine	Gas/Oil #2	14.550	19.500	1969
French Island Gas Turbine La Crosse County, WI					
Unit 3	Gas Turbine	Oil #2	70.150	90.240	1974
Unit 4	Gas Turbine	Oil #2	71.290	89.810	1974
French Island Steam Plant La Crosse County, WI					
Unit 1	Steam	Wood/Gas/RDF	15.000	15.000	1969
Unit 2	Steam	Wood/Gas/RDF	14.000	15.000	1969

2005	Plant Profile				
	Unit Type	Fuel Type	Capacity		Year Installed
			Summer (MW)	Winter (MW)	
<b>Xcel Energy, continued</b>					
Granite City Gas Turbine Sherburne County, MN					
Unit 1	Gas Turbine	Gas/Oil #2	15.240	19.550	1969
Unit 2	Gas Turbine	Gas/Oil #2	15.610	20.030	1969
Unit 3	Gas Turbine	Gas/Oil #2	15.710	20.100	1969
Unit 4	Gas Turbine	Gas/Oil #2	15.260	19.580	1969
Hayward Hydroelectric Sawyer County, WI					
Unit 1	Hydro	Water	0.200	0.200	1925
Hennepin Island Hydro Hennepin County, MN					
Unit 1	Hydro	Water	2.400	2.400	1954
Unit 2	Hydro	Water	2.300	2.300	1954
Unit 3	Hydro	Water	2.300	2.300	1954
Unit 4	Hydro	Water	2.300	2.300	1954
Unit 5	Hydro	Water	2.700	2.700	1955
High Bridge Steam Ramsey County, MN					
Unit 5	Steam	Coal/Gas	99.000	100.000	1956
Unit 6	Steam	Coal/Gas	177.000	177.000	1959
Holcombe Hydroelectric Chippewa County, WI					
Unit 1	Hydro	Water	11.700	11.740	1950
Unit 2	Hydro	Water	11.700	11.730	1950
Unit 3	Hydro	Water	11.700	11.710	1950
Inver Hills Gas Turbine Dakota County, MN					
Unit 1	Gas Turbine	Gas/Oil #2	61.900	71.400	1972
Unit 2	Gas Turbine	Gas/Oil #2	58.000	71.400	1972
Unit 3	Gas Turbine	Gas/Oil #2	59.300	71.400	1972
Unit 4	Gas Turbine	Gas/Oil #2	60.100	71.400	1972
Unit 5	Gas Turbine	Gas/Oil #2	59.200	71.400	1972
Unit 6	Gas Turbine	Gas/Oil #2	59.400	71.400	1972
Unit 7	Int Comb	Oil #1	1.830	1.830	1994
Unit 8	Int Comb	Oil #1	1.830	1.830	1994

2005	Plant Profile				
	Unit Type	Fuel Type	Capacity		Year Installed
			Summer (MW)	Winter (MW)	
<b>Xcel Energy, continued</b>					
Jim Falls Hydroelectric Chippewa County, WI					
Unit 1	Hydro	Water	27.910	27.910	1988
Unit 2	Hydro	Water	27.910	27.910	1988
Unit 3	Hydro	Water	0.500	0.500	1986
Key City Gas Turbine Blue Earth County, MN					
Unit 1	Gas Turbine	Gas/Oil #2	15.200	19.500	1969
Unit 2	Gas Turbine	Gas/Oil #2	15.000	19.500	1969
Unit 3	Gas Turbine	Gas/Oil #2	16.200	19.500	1969
Unit 4	Gas Turbine	Gas/Oil #2	16.500	19.500	1969
Ladysmith Hydroelectric Rusk County, WI					
Unit 1	Hydro	Water	0.950	0.950	1940
Unit 2	Hydro	Water	0.950	0.950	1940
Unit 3	Hydro	Water	1.110	1.110	1983
Menomonie Hydro Dunn County, WI					
Unit 1	Hydro	Water	2.650	2.650	1958
Unit 2	Hydro	Water	2.730	2.730	1958
Minnesota Valley Steam Chippewa County, MN					
Unit 3	Steam	Coal/Gas/Oil #2	45.400	47.200	1953
Monticello Nuclear Wright County, MN					
Unit 1	Nuclear	Uranium	568.000	593.000	1971
Prairie Island Nuclear Goodhue County, MN					
Unit 1	Nuclear	Uranium	523.000	547.000	1973
Unit 2	Nuclear	Uranium	521.000	546.000	1974
Red Wing Steam Goodhue County, MN					
Unit 1	Steam	RDF/Gas	10.500	11.100	1949
Unit 2	Steam	RDF/Gas	10.300	10.900	1949

2005	Plant Profile				
			Capacity		
	Unit Type	Fuel Type	Summer (MW)	Winter (MW)	Year Installed
<b>Xcel Energy, continued</b>					
Riverdale Hydroelectric St. Croix County, WI					
Unit 1	Hydro	Water	0.320	0.320	1905
Unit 2	Hydro	Water	0.290	0.290	1905
Riverside Steam Hennepin County, MN					
Unit 7	Steam	Coal/Gas/Oil #2	150.160	155.950	1987
Unit 8	Steam	Coal/Oil #2	236.200	241.000	1964
Saxon Falls Hydro Jackson County, WI					
Unit 1	Hydro	Water	0.700	0.550	1913
Unit 2	Hydro	Water	0.800	0.650	1913
Sherburne County Steam (59% share of Unit 3) Sherburne County, MN					
Unit 1	Steam	Coal/Oil #2	712.000	717.790	1976
Unit 2	Steam	Coal/Oil #2	706.000	710.760	1977
Unit 3	Steam	Coal/Oil #2	521.560	525.990	1987
St. Croix Falls Hydro Polk County, WI					
Unit 1	Hydro	Water	2.990	2.990	1905
Unit 2	Hydro	Water	2.940	2.940	1905
Unit 3	Hydro	Water	2.890	2.890	1905
Unit 4	Hydro	Water	3.290	3.290	1905
Unit 5	Hydro	Water	3.190	3.190	1910
Unit 6	Hydro	Water	2.990	2.990	1910
Unit 7	Hydro	Water	3.090	3.090	1923
Unit 8	Hydro	Water	3.090	3.090	1923
Superior Falls Hydro Gogebic County, MI					
Unit 1	Hydro	Water	0.950	0.750	1917
Unit 2	Hydro	Water	0.900	0.700	1917
Thornapple Hydro Rusk County, WI					
Unit 1	Hydro	Water	0.780	0.780	1929
Unit 2	Hydro	Water	0.820	0.820	1929

2005	Plant Profile				
	Unit Type	Fuel Type	Capacity		Year Installed
			Summer (MW)	Winter (MW)	
<b>Xcel Energy, continued</b>					
Trego Hydroelectric Washburn County, WI					
Unit 1	Hydro	Water	0.800	0.800	1927
Unit 2	Hydro	Water	0.600	0.600	1927
United Health Care Hennepin County, MN					
Unit 1&2	Gas Turbine	Oil #2	3.620	3.620	1993
United Hospital Ramsey County, MN					
Unit 1	Gas Turbine	Oil #2	4.710	4.710	1992
West Faribault Jet Engine Rice County, MN					
Unit 2	Gas Turbine	Gas	16.100	0.000	1965
Unit 3	Gas Turbine	Gas	14.300	0.000	1965
Wheaton Chippewa County, WI					
Unit 1	Gas Turbine	Oil #2/Gas	56.040	70.790	1973
Unit 2	Gas Turbine	Oil #2/Gas	63.170	79.420	1973
Unit 3	Gas Turbine	Oil #2/Gas	55.700	70.610	1973
Unit 4	Gas Turbine	Oil #2/Gas	56.590	72.000	1973
Unit 5	Gas Turbine	Oil #2/Gas	60.810	78.850	1973
Unit 6	Gas Turbine	Oil #2/Gas	60.110	79.170	1973
White River Hydroelectric Ashland County, WI					
Unit 1	Hydro	Water	0.440	0.300	1907
Unit 2	Hydro	Water	0.420	0.300	1907
Wilmarth Steam Blue Earth County, MN					
Unit 1	Steam	RDF/Gas	9.180	9.650	1948
Unit 2	Steam	RDF/Gas	8.310	8.730	1951



2005	Plant Profile				
			Capacity		
	Unit Type	Fuel Type	Summer (MW)	Winter (MW)	Year Installed
<b>Xcel Energy, continued</b>					
Wissota Hydroelectric					
Chippewa County, WI					
Unit 1	Hydro	Water	6.130	6.130	1917
Unit 2	Hydro	Water	6.330	6.330	1917
Unit 3	Hydro	Water	6.210	6.210	1917
Unit 4	Hydro	Water	6.220	6.220	1917
Unit 5	Hydro	Water	6.430	6.430	1917
Unit 6	Hydro	Water	6.030	6.030	1917

Note for Table 9

\*Data is from 2003.

**Table 10: Net Generation and Fuel Consumption for Utility-Owned Electric Generating Plants Serving Minnesota**

2005	Net MWh Generation*	Fuel Used						
		Coal (Tons)	Nat Gas (MCF)	Fuel Oil #2** (Gallons)	Fuel Oil #6 (Gallons)	Nuclear (Mbtu)	Other*** (Tons)	
<b>Adrian Public Utilities</b>								
Adrian Power Plant Nobles County, MN Units 3 - 5	16			1048				
<b>Alexandria Light &amp; Power</b>								
Alexandria Power Plant Douglas County, MN Unit 1	25			1,962				
Unit 2	178		642	2,108				
Unit 3	188		633	3,196				
<b>Alliant Energy-Interstate Power Company</b>								
Agency Street Gas Turbine Des Moines County, IA Unit 1	1,563		41,989	149				
Unit 2	1,606		43,144	154				
Unit 3	1,756		47,173	168				
Unit 4	1,382		37,126	132				
Ames Diesel Story County, IA Units 1 and 2	6			84				
Anamosa Hydro Jones County, IA Unit 1	505							

2005	Net MWh Generation*	Fuel Used						
		Coal (Tons)	Nat Gas (MCF)	Fuel Oil #2** (Gallons)	Fuel Oil #6 (Gallons)	Nuclear (Mbtu)	Other*** (Tons)	
<b>Alliant Energy-Interstate Power Company, continued</b>								
Burlington Gas Turbine Des Moines County, IA								
Unit 1	1,770		43,290					
Unit 2	2,100		51,361					
Unit 3	2,020		49,405					
Unit 4	1,780		43,535					
Burlington Steam Des Moines County, IA								
Unit 1	1,143,174	740,564	13,936					
Centerville Diesel Appanoose County, IA								
Units 1 - 3	-131			24,570				
Centerville Gas Turbine Appanoose County, IA								
Units 1 and 2	7,597			1,382,682				
Duane Arnold Energy Center (70% share)								
Benton County, IA								
Unit 1****	3,176,819					33,038,918		
Dubuque Internal Combustion Dubuque County, IA								
Unit 1	-16			3,570				
Unit 2	-15			3,570				
Dubuque Steam Dubuque County, IA								
Unit 2	346					2,654		
Unit 3	164,191	109,995	9,033					
Unit 4	179,575	120,423	9,890					

2005	Net MWh Generation*	Fuel Used						
		Coal (Tons)	Nat Gas (MCF)	Fuel Oil #2** (Gallons)	Fuel Oil #6 (Gallons)	Nuclear (Mbtu)	Other*** (Tons)	
<b>Alliant Energy-Interstate Power Company, continued</b>								
Emery Cerro Gordo County, IA								
Unit 1	491,026		5,969,687		2,565			
Unit 2	459,536		5,586,036		2,400			
Unit 3	614,151							
Fox Lake Gas Turbine Martin County, MN								
Unit 1	6,019			839,874				
Fox Lake Steam Martin County, MN								
Unit 1	3,145		11,780		4,704			
Unit 2	-378							
Unit 3	61,709		229,721		3,282,468			
Grinnell Gas Turbine Poweshiek County, IA								
Units 1 & 2	597		25,344					
Hills Internal Combustion Rock County, MN								
Unit 1	-87			420				
Unit 2	-93			546				
Iowa Falls Hydro Hardin County, IA								
Unit 1	-17							

2005	Net MWh Generation*	Fuel Used						Other*** (Tons)
		Coal (Tons)	Nat Gas (MCF)	Fuel Oil #2** (Gallons)	Fuel Oil #6 (Gallons)	Nuclear (Mbtu)		
<b>Alliant Energy-Interstate Power Company, continued</b>								
Lansing Internal Combustion Allamakee County, IA								
Unit 1	9			672				
Unit 2	9			714				
Lansing Steam Allamakee County, IA								
Unit 1	-1,921	484		3,192				
Unit 2	4,670	2,488		10,962				
Unit 3	111,105	858,102		52,836				
Unit 4	1,295,832	42,706		163,926				
Lime Creek Cerro Gordo County, IA								
Unit 1	17,560			1,893,024				
Unit 2	15,048			1,665,090				
Louisa Station No. 1 (4% share) Louisa County, IA								
Unit 1	160,298	99,530	6,608	168				
M.L. Kapp Steam Clinton County, IA								
Unit 1	125		4,590					
Unit 2	1,225,555	818,937	39,400					
Maquoketa Hydro Jackson County, IA								
Units 1 and 2	1,839							

2005	Net MWh Generation*	Fuel Used						
		Coal (Tons)	Nat Gas (MCF)	Fuel Oil #2** (Gallons)	Fuel Oil #6 (Gallons)	Nuclear (Mbtu)	Other*** (Tons)	
Alliant Energy-Interstate Power Company, continued								
Marshalltown Gas Turbine Marshall County, IA								
Unit 1	15,453		1,585,206					
Unit 2	9,897		1,015,266					
Unit 3	21,596		2,215,332					
Montgomery Gas Turbine LeSueur County, MN								
Unit 1	3,908		552,552					
Neal No. 3 Woodbury County, IA								
Unit 1	1,089,217	668,410	15,544					
Neal No. 4 (22% share) Woodbury County, IA								
Unit 4	1,054,771	643,885	1,338,896					
Ottumwa Generating Station Wappello County, IA								
Unit 1	1,466,674	945,023	357,546					
Prairie Creek Linn County, IA								
Unit 1A	54,378	59,509	2,507	504				
Unit 2	94	64,852	4	0				
Unit 3	85,318	96,550	3,933	756				
Unit 4	778,213	332,512	35,874	7,014				155,570

2005	Net MWh Generation*	Fuel Used						
		Coal (Tons)	Nat Gas (MCF)	Fuel Oil #2** (Gallons)	Fuel Oil #6 (Gallons)	Nuclear (Mbtu)	Other*** (Tons)	
<b>Alliant Energy-Interstate Power Company, continued</b>								
Red Cedar Linn County, IA								
Unit 1	1,550		52,526					
Sixth Street Station Linn County, IA								
Unit 2	10,781	10,836	50,154					
Unit 4	40,287	40,491	187,417					
Unit 7	55,989	56,273	260,464					
Unit 8	51,056	51,314	237,515					
Sutherland Station Marshall County, IA								
Unit 1	184,194	139,113	11,956					
Unit 2	181,433	145,429	11,777					
Unit 3	508,365	289,521	32,998					
<b>Austin Utilities</b>								
Downtown Plant Mower County, MN								
Units 1 - 5	3,754		68,338					
Northeast Plant Mower County, MN								
Unit 1	140,898	71,912	98,811					

2005	Net MWh Generation*	Fuel Used						
		Coal (Tons)	Nat Gas (MCF)	Fuel Oil #2** (Gallons)	Fuel Oil #6 (Gallons)	Nuclear (Mbtu)	Other*** (Tons)	
<b>Benson Municipal Utilities</b>								
Benson Municipal Utilities Swift County, MN								
Unit 5	34			4,648				
Unit 6	41			4,873				
Unit 7	73			4,442				
Unit 8	72			4,380				
Unit 9	73			4,455				
Unit 10	66			4,088				
Unit 11	73			4,592				
<b>Blooming Prairie Public Utilities</b>								
Blooming Prairie Power Plant Steele County, MN								
Unit 2	32			2,462				
Unit 3	1			97				
Unit 4	3			212				
Unit 5	180			11,518				
<b>Blue Earth Light &amp; Water</b>								
Blue Earth City Plant Faribault County, MN								
Unit 1	4		0	274				
Unit 3	47			3,168				
Unit 4	42			2,815				
Unit 5	47			3,050				
Unit 6	37			2,950				



2005	Net MWh Generation*	Fuel Used						
		Coal (Tons)	Nat Gas (MCF)	Fuel Oil #2** (Gallons)	Fuel Oil #6 (Gallons)	Nuclear (Mbtu)	Other*** (Tons)	
<b>Dairyland Power Cooperative^^</b>								
Alma Station Buffalo County, WI								
Unit 1	37,279	22,792		13,450				
Unit 2	38,812	23,773		14,000				
Unit 3	37,114	22,695		13,390				
Unit 4	279,490	141,143		12,610				
Unit 5	351,170	172,020		7,380				
Elk Mound Combustion Turbine Rusk County, WI								
Unit 1	4,618		43,368					
Unit 2	3,292		39,484					
Flambeau Hydroelectric Rusk County, WI								
Unit 1	27,628							
Unit 2	33,060							
Unit 3	17,136							
Genoa 3 Vernon County, WI								
Unit 1	2,316,162	1,037,883		271,000				
JP Madgett Buffalo County, WI								
Unit 1	2,270,170	1,421,123		424,000				

2005	Net MWh Generation*	Fuel Used						
		Coal (Tons)	Nat Gas (MCF)	Fuel Oil #2** (Gallons)	Fuel Oil #6 (Gallons)	Nuclear (Mbtu)	Other*** (Tons)	
<b>Delano Municipal Utilities</b>								
Delano Municipal Plant Wright County, MN								
Unit 1	48			3,760				
Unit 3	78			6,190				
Unit 4	88			7,120				
Unit 5	95			7,760				
Unit 6	43			3,360				
Unit 7	133			10,414				
Unit 8	99			7,850				
Unit 9	0			0				
<b>Detroit Lakes Public Utilities</b>								
Jet Plant Becker County, MN								
Unit 1	10			1,981				
<b>East Grand Forks Water and Light Dept</b>								
Distribution Service Center Polk County, MN								
Unit 1	0			332				
Water Treatment Plant Polk County, MN								
Unit 1	0			153				

2005	Net MWh Generation*	Fuel Used						Other*** (Tons)
		Coal (Tons)	Nat Gas (MCF)	Fuel Oil #2** (Gallons)	Fuel Oil #6 (Gallons)	Nuclear (Mbtu)		
<b>Elk River Municipal Utilities</b>								
Elk River Mun. Diesel Plant Sherburne County, MN								
Unit 1	1			145				
Unit 2	1			145				
Unit 3	45		9	3,645				
Unit 4	72			6,678				
<b>Fairfax, City of</b>								
Fairfax Municipal Power Plant Renville County, MN								
Unit 2A	2			200				
<b>Fairmont Public Utilities</b>								
Fairmont Power Plant Martin County, MN								
Unit 3	214		4,065					
Unit 4	235		4,464					
Unit 5	1,376		26,139					
Unit 6	1,358		12,346	13,534				
Unit 7	1,307		11,957	12,494				
<b>Glencoe Light and Power Commission</b>								
Glencoe Municipal Electric Plant McLeod County, MN								
Units 5 - 12	953			64,658				

2005	Net MWh Generation*	Fuel Used						
		Coal (Tons)	Nat Gas (MCF)	Fuel Oil #2** (Gallons)	Fuel Oil #6 (Gallons)	Nuclear (Mbtu)	Other*** (Tons)	
<b>Grand Marais Public Utilities</b>								
Grand Marais Power Plant Cook County, MN								
Unit 1	149			11,300				
Unit 2	98			7,700				
Unit 3	49			4,600				
<b>Granite Falls Municipal Utilities</b>								
Granite Falls Municipal Hydroelectric Yellow Medicine County, MN								
Unit 1	671							
Unit 2	1,306							
Unit 3	4,500							
Granite Falls Municipal Diesel Yellow Medicine County, MN								
Unit 1	67			840				
Unit 2	61			870				
Unit 3	70			900				
<b>Great River Energy</b>								
Cambridge Gas Turbine Plant Isanti County, MN								
Unit 1	342			36,000				
Coal Creek Station McLean County, ND								
Units 1 and 2	8,708,890	7,735,708			277,920			

2005	Net MWh Generation*	Fuel Used						
		Coal (Tons)	Nat Gas (MCF)	Fuel Oil #2** (Gallons)	Fuel Oil #6 (Gallons)	Nuclear (Mbtu)	Other*** (Tons)	
<b>Great River Energy, continued</b>								
Elk River Station Sherburne County, MN								
Units 1 - 3	179,987		92,611	2,600			292,094	
Lakefield Junction Martin County, MN								
Unit 1	60,509		754,157	16,000				
Unit 2	55,550		723,517	19,000				
Unit 3	54,643		700,904	52,000				
Unit 4	53,966		688,835	56,000				
Unit 5	54,536		684,019	49,000				
Unit 6	52,142		667,390	48,000				
Maple Lake Wright County, MN								
Unit 1	240			26,000				
Pleasant Valley Station Mower County, MN								
Unit 11	162,030		1,046,728	190,000				
Unit 12	103,628		1,136,729	265,000				
Unit 13	64,417		679,547	474,000				
Rock Lake Pine County, MN								
Unit 1	429			52,000				
St. Bonifacius Power Plant Carver County, MN								
Unit 1	2,291			238,000				

2005	Net MWh Generation*	Fuel Used						
		Coal (Tons)	Nat Gas (MCF)	Fuel Oil #2** (Gallons)	Fuel Oil #6 (Gallons)	Nuclear (Mbtu)	Other*** (Tons)	
<b>Great River Energy, continued</b>								
Stanton Station Steam Plant Mercer County, ND								
Unit 1	1,427,547	816,341		50,444				
<b>Halstad Municipal Utilities</b>								
Halstad Diesel Plant Norman County, MN								
Units 1 - 3	1			185				
<b>Hastings Public Utilities Commission</b>								
Hastings Hydro Facility Dakota County, MN								
Unit 1	11,884							
Unit 2	12,789							
<b>Hawley Public Utilities</b>								
Hawley Plant Clay County, MN								
Unit 1	0			37				
Unit 2	1			260				
Unit 3	0			37				
Unit 4	1			104				
Unit 5	1			105				

2005	Net MWh Generation*	Fuel Used						Other*** (Tons)
		Coal (Tons)	Nat Gas (MCF)	Fuel Oil #2** (Gallons)	Fuel Oil #6 (Gallons)	Nuclear (Mbtu)		
<b>Hibbing Public Utilities</b>								
Hibbing Public Utilities Plant								
St. Louis County, MN								
Unit 3	15,359	22,433						
Unit 5	26,480	38,706						
Unit 6	21,015	30,799						
<b>Hutchinson Utilities Commission</b>								
Hutchinson Municipal Plant No. 1								
McLeod County, MN								
Unit 2	0							
Unit 3	589		2,127	24,652				
Unit 4	425		1,964	15,923				
Unit 5	0							
Unit 6	0							
Unit 7	190		466	10,399				
Unit 8	238		1,875					
Hutchinson Municipal Plant No. 2								
McLeod County, MN								
Unit 1G	18,330		198,501					
Unit 1S	2,587							
Unit 9	595		9,268					

2005	Net MWh Generation*	Fuel Used						
		Coal (Tons)	Nat Gas (MCF)	Fuel Oil #2** (Gallons)	Fuel Oil #6 (Gallons)	Nuclear (Mbtu)	Other*** (Tons)	
<b>Janesville Municipal Utilities</b>								
Janesville Municipal Plant Waseca County, MN								
Unit 1	2		3,864	250				
Unit 2	1		4,161	270				
Unit 3	1		1,884	120				
Unit 4	2			320				
<b>Kenyon Municipal Utilities</b>								
Kenyon Municipal Plant Goodhue County, MN								
Unit 5	86			6670				
Unit 6	59			4430				
Unit 7	67			4990				
<b>Lake Crystal Municipal Utilities</b>								
Lake Crystal Plant Blue Earth County, MN								
Unit 1	22			1,890				
Unit 3	215		1,086	8,458				
Unit 4	33			2,336				
Unit 5	185			12,700				
<b>Lakefield Public Utilities</b>								
Lakefield Power Plant Jackson County, MN								
Unit 5	9			714				
Unit 6	19			1,280				



2005	Net MWh Generation*	Fuel Used						
		Coal (Tons)	Nat Gas (MCF)	Fuel Oil #2** (Gallons)	Fuel Oil #6 (Gallons)	Nuclear (Mbtu)	Other*** (Tons)	
<b>Lanesboro Public Utilities</b>								
Lanesboro Power Plant - Diesel Fillmore County, MN								
Unit 4	6		421					
Unit 5	115		9,449					
Lanesboro Power Plant - Hydro Fillmore County, MN								
Unit 1	68							
<b>Litchfield Public Utilities</b>								
Litchfield Power Plant Meeker County, MN								
Unit 1	2		2,002					
Unit 2	2		5,035					
<b>Madelia Municipal Light &amp; Power</b>								
Madelia Municipal Plant Watonwan County, MN								
Unit 1	25		2,298	342				
Unit 2	1		0	67				
Unit 3	1		0	0				
Unit 4	40		3,423	562				
<b>Marshall Municipal Utilities</b>								
Marshall Power Plant Lyon County, MN								
Unit 6	190			21,337				

2005	Net MWh Generation*	Fuel Used						
		Coal (Tons)	Nat Gas (MCF)	Fuel Oil #2** (Gallons)	Fuel Oil #6 (Gallons)	Nuclear (Mbtu)	Other*** (Tons)	
<b>Melrose Public Utilities</b>								
Melrose Power Plant Stearns County, MN								
Unit 1	2		1,220					
Unit 2	2		1,910					
Unit 3	6		5,055					
Unit 4	5		6,867					
<b>Minnesota Power</b>								
Blanchard Hydroelectric Station Morrison County, MN								
Unit 1	27,879							
Unit 2	39,197							
Unit 3	36,736							
Boswell EC (79% share Unit 4) Itasca County, MN								
Unit 1	465,971	271,201	49,350					
Unit 2	473,207	270,492	49,925					
Unit 3	2,321,487	1,355,305	177,665					
Unit 4	3,183,749	2,407,862	267,881					
Fond Du Lac Hydroelectric Station St. Louis County, MN								
Unit 1	47,694							

2005	Net MWh Generation*	Fuel Used						
		Coal (Tons)	Nat Gas (MCF)	Fuel Oil #2** (Gallons)	Fuel Oil #6 (Gallons)	Nuclear (Mbtu)	Other*** (Tons)	
<b>Minnesota Power, continued</b>								
Knife Falls Hydro Station Carlton County, MN								
Unit 1	3,469							
Unit 2	3,887							
Unit 3	2,662							
Laskin EC St. Louis County, MN								
Unit 1	353,991	240,781		5,246				
Unit 2	341,659	233,197		5,063				
Little Falls Hydro Station Morrison County, MN								
Unit 1	6,521							
Unit 2	6,994							
Unit 3	7,567							
Unit 4	9,115							
Unit 6	510							
M.L. Hibbard Steam Station St. Louis County, MN								
Unit 3	43,852	32,052					17,610	
Unit 4	36,901	26,972					14,818	
Pillager Hydro Station Cass County, MN								
Unit 1	5,940							
Unit 2	5,499							

2005	Net MWh Generation*	Fuel Used						
		Coal (Tons)	Nat Gas (MCF)	Fuel Oil #2** (Gallons)	Fuel Oil #6 (Gallons)	Nuclear (Mbtu)	Other*** (Tons)	
<b>Minnesota Power, continued</b>								
Prairie River Hydro Station Itasca County, MN								
Unit 1	1,342							
Unit 2	588							
Rapids Energy Center Itasca County, MN								
Unit 4	3,804							
Unit 5	5,870							
Unit 6	36,058	9,339	28,069				58,790	
Unit 7	91,829	5,704					35,022	
Sappi Cloquet Turbine Generator 5 Carlton County, MN								
Unit 5	99,319		203,604				22,623	
Scanlon Hydro Station Carlton County, MN								
Unit 1	1,459							
Unit 2	2,047							
Unit 3	2,424							
Unit 4	1,352							
Sylvan Hydro Station Cass County, MN								
Unit 1	4,446							
Unit 2	4,011							
Unit 3	3,309							

2005	Net MWh Generation*	Fuel Used						
		Coal (Tons)	Nat Gas (MCF)	Fuel Oil #2** (Gallons)	Fuel Oil #6 (Gallons)	Nuclear (Mbtu)	Other*** (Tons)	
<b>Minnesota Power, continued</b>								
Taconite Harbor Cook County, MN								
Unit 1	520,925	318,261	28,748					
Unit 2	444,522	266,726	111,529					
Unit 3	428,911	250,000	26,187					
Thomson Hydro Station Carlton County, MN								
Unit 1	48,762							
Unit 2	35,751							
Unit 3	37,910							
Unit 4	37,024							
Unit 5	33,990							
Unit 6	50,072							
Winton Hydro Station Lake County, MN								
Unit 2	9,468							
Unit 3	9,239							
<b>Minnkota Power Cooperative, Inc.</b>								
Coyote Station (30% share) Mercer County, ND								
Unit 1	3,046,077	2,483,310	195,621					

2005	Net MWh Generation*	Fuel Used						
		Coal (Tons)	Nat Gas (MCF)	Fuel Oil #2** (Gallons)	Fuel Oil #6 (Gallons)	Nuclear (Mbtu)	Other*** (Tons)	
<b>Minnkota Power Cooperative, Inc., continued</b>								
Grand Forks Diesel Plant Grand Forks County, ND								
Unit 1	13			918				
Unit 2	14			1,034				
Unit 3	13			962				
Unit 4	19			1,405				
Unit 5	21			1,512				
Unit 6	15			1,075				
Unit 7	23			1,670				
Unit 8	25			1,922				
Unit 9	23			1,708				
Unit 10	22			1,638				
Unit 11	23			1,711				
Harwood Diesel Plant Cass County, ND								
Unit 1	3			288				
Unit 2	21			1,735				
Unit 3	3			271				
Infinity Wind Petersburg Grand Forks County, ND								
Unit 1	2,759							
Infinity Wind Valley City Grand Forks County, ND								
Unit 1	2,726							

2005	Net MWh Generation*	Fuel Used						
		Coal (Tons)	Nat Gas (MCF)	Fuel Oil #2** (Gallons)	Fuel Oil #6 (Gallons)	Nuclear (Mbtu)	Other*** (Tons)	
<b>Minnkota Power Cooperative, Inc., continued</b>								
Milton R. Young (29% share Unit 2) Oliver County, ND								
Unit 1	1,883,383	1,616,184		195,621				
Unit 2	3,234,477	2,831,623		428,462				
<b>Moorhead Public Service</b>								
Moorhead Power Plant Clay County, MN								
Unit 6	65			8,653				
Unit 8 - wind	1,037							
Unit 9 - wind	1,472							
<b>Moose Lake Water &amp; Light</b>								
Moose Lake Municipal Plant Carlton County, MN								
Unit 1	1			680				
Unit 2	1			645				
Unit 3	2			3,084				
Unit 4	1			535				
Unit 1 South	2			3,383				
Unit 2 South	2			3,047				

2005	Net MWh Generation*	Fuel Used						Other*** (Tons)
		Coal (Tons)	Nat Gas (MCF)	Fuel Oil #2** (Gallons)	Fuel Oil #6 (Gallons)	Nuclear (Mbtu)		
<b>Mora Municipal Utilities</b>								
Mora Municipal Plant Kanabec County, MN								
Unit 2	128		2,576 <sup>AAA</sup>	1,630				
Unit 5	238			6,659				
Unit 6	298			20,082				
<b>New Prague Utilities Commission</b>								
New Prague Power Plant Scott County, MN								
Unit 1	28			2,137				
Unit 2	341		2,805	4,397				
Unit 3	177		1,490	2,974				
Unit 4	393		2,575	5,572				
Unit 5	28		436					
Unit 6	554		4,481	4,015				
<b>New Ulm Public Utilities</b>								
New Ulm Gas Turbine Plant Brown County, MN								
Unit 5	175			18,456				
Unit 7	133			16,141				
New Ulm Steam Plant Brown County, MN								
Unit 3	1,994		23,522					
Unit 4	15,127		178,474					
Unit 6	98		1,160					



2005	Net MWh Generation*	Fuel Used						
		Coal (Tons)	Nat Gas (MCF)	Fuel Oil #2** (Gallons)	Fuel Oil #6 (Gallons)	Nuclear (Mbtu)	Other*** (Tons)	
<b>North Branch Water &amp; Light</b>								
North Branch Power Plant Chisago County, MN								
Unit 1	170		2,309	9,602				
Unit 2	248		3,472	16,461				
Unit 3	181			14,864				
Unit 4	224			14,091				
<b>Otter Tail Power Company</b>								
Bemijji Hydroelectric Beltrami County, MN								
Unit 1	718							
Unit 2	259							
Big Stone Plant (54% share) Grant County, SD								
Unit 1	1,479,741	1,701,748		125,560			12,881	
Coyote Station (35% share) Mercer County, ND								
Unit 1	1,043,020	839,813		157,450				
Dayton Hollow Hydroelectric Otter Tail County, MN								
Unit 1	4,332							
Unit 2	3,730							

2005	Net MWh Generation*	Fuel Used						
		Coal (Tons)	Nat Gas (MCF)	Fuel Oil #2** (Gallons)	Fuel Oil #6 (Gallons)	Nuclear (Mbtu)	Other*** (Tons)	
<b>Otter Tail Power Company, continued</b>								
Fergus Control Center Otter Tail County, MN								
Unit 1	24			not reported				
Hoot Lake Hydroelectric Otter Tail County, MN								
Unit 1	3,569							
Hoot Lake Steam Plant Otter Tail County, MN								
Unit 1	-652	221						
Unit 2	398,304	232,979		8,441				
Unit 3	533,326	309,625		33,264				
Jamestown Turbine Plant Stutsman County, ND								
Unit 1	2,738			362,000				
Unit 2	3,261			451,129				
Lake Preston Turbine Plant Kingsbury County, SK								
Unit 1	2,962			454,602				
Pisgah Hydroelectric Otter Tail County, MN								
Unit 1	4,087							
Potlatch Cogeneration Beltrami County, MN								
Unit 1	30,717							not reported

2005	Net MWh Generation*	Fuel Used						
		Coal (Tons)	Nat Gas (MCF)	Fuel Oil #2** (Gallons)	Fuel Oil #6 (Gallons)	Nuclear (Mbtu)	Other*** (Tons)	
<b>Otter Tail Power Company, continued</b>								
Solway Beltrami County, MN								
Unit 1	27,528		303,250	146,965				
Taplin Gorge Hydroelectric Otter Tail County, MN								
Unit 1	4,205							
Wright Hydroelectric Otter Tail County, MN								
Unit 1	2,545							
<b>Princeton Public Utilities</b>								
Princeton Power Plant Mille Lacs County, MN								
Unit 3	123			8,831				
Unit 4	50			3,393				
Unit 5	22			1,480				
Unit 6	131			9,182				
Unit 7	495			31,642				

2005	Net MWh Generation*	Fuel Used							Other*** (Tons)
		Coal (Tons)	Nat Gas (MCF)	Fuel Oil #2** (Gallons)	Fuel Oil #6 (Gallons)	Nuclear (Mbtu)			
<b>Redwood Falls Public Utilities</b>									
Redwood Falls Hydro Plant Redwood County, MN									
Unit 1A	1,512								
Unit 7	1,741		12,448	26,820					
<b>Southside Substation Redwood County, MN</b>									
Unit 2	166			11,740					
Unit 3	181			12,720					
Unit 4	181			12,960					
Unit 5	123			8,157					
<b>Rochester Public Utilities</b>									
Cascade Creek Olmsted County, MN									
Unit 1	1,397		11,539		1065				
Unit 2	6,158		55,917		5036				
<b>Lake Zumbro Hydroelectric Wabasha County, MN</b>									
Unit 1	6,506								
Unit 2	5,671								
<b>Silver Lake Steam Plant Olmsted County, MN</b>									
Unit 1	18,307	9,742	15,839						
Unit 2	39,411	15,330	28,959						
Unit 3	66,844	39,064	45,684						
Unit 4	175,970	120,273	89,392						

2005	Net MWh Generation*	Fuel Used						
		Coal (Tons)	Nat Gas (MCF)	Fuel Oil #2** (Gallons)	Fuel Oil #6 (Gallons)	Nuclear (Mbtu)	Other*** (Tons)	
<b>Roseau Municipal Water &amp; Light</b>								
Roseau Municipal Power Plant Roseau County, MN								
Units 1 - 3	not reported							
<b>St. James Municipal Light &amp; Power</b>								
Diesel Generation Plant Watonwan County, MN								
Unit 1	0			677				
Unit 2	0			807				
Unit 3	0			679				
Unit 4	0			482				
Unit 5	0			673				
Unit 6	0			665				
<b>Sleepy Eye Public Utilities</b>								
Sleepy Eye Power Plant Brown County, MN								
Unit 1	22			897				
Unit 2	22			2,605				
Unit 3	36			2,698				
Unit 4	21			1,591				
Unit 5	21			1,528				

2005	Net MWh Generation*	Fuel Used						
		Coal (Tons)	Nat Gas (MCF)	Fuel Oil #2** (Gallons)	Fuel Oil #6 (Gallons)	Nuclear (Mbtu)	Other*** (Tons)	
<b>Southern Minnesota Municipal Power Agency</b>								
Fairmont Wind Farm Martin County, MN								
Units 1 - 4	14,068							
Grand Marais Cook County, MN								
Units 5 - 9	352		26,250					
Owatonna Downtown Steele County, MN								
Units 5, 6 & 7	3,840		38,208					
Preston Municipal Plant Fillmore County, MN								
Units 1 - 6	416		3,065	8,064				
Redwood Falls Wind Farm Redwood County, MN								
Units 1& 2	7,701							
St. Peter Nicollet County, MN								
Units 1 - 6	1,293			93,690				
Sherburne Steam Plant (41% share) Sherburne County, MN								
Unit 3	2,024,442	1,649,565						
SW Sub Ziglier Temps Mower County, MN								
Units 1 - 5	189			14,112				

2005	Net MWh Generation*	Fuel Used						
		Coal (Tons)	Nat Gas (MCF)	Fuel Oil #2** (Gallons)	Fuel Oil #6 (Gallons)	Nuclear (Mbtu)	Other*** (Tons)	
<b>Spring Valley Public Utilities Commission</b>								
Spring Valley Plant Fillmore County, MN								
Unit 1	8		432					
Unit 2	213		8,333	1,960				
Unit 3	428		68,679	10,949				
<b>Springfield Public Utilities</b>								
Springfield Municipal Plant Brown County, MN								
Units 5-9	86			5,968				
<b>Steele Waseca Cooperative Electric</b>								
Windmills Steele County, MN								
Unit 1 - 12	not reported							
<b>Thief River Falls Municipal Utility</b>								
Thief River Falls Hydro Plant Pennington County, MN								
Unit 1	1,420							
Unit 2	1,857							
Municipal Power Plant Pennington County, MN								
Unit 1	21			1,763				
Unit 2	17			1,409				
Unit 3	21			1,600				
Unit 4	40			4,893				

2005	Net MWh Generation*	Fuel Used						
		Coal (Tons)	Nat Gas (MCF)	Fuel Oil #2** (Gallons)	Fuel Oil #6 (Gallons)	Nuclear (Mbtu)	Other*** (Tons)	
<b>Truman Municipal Utility</b>								
Truman Municipal Plant Martin County, MN								
Units 1 - 6	not reported							
<b>Two Harbors Water &amp; Light</b>								
Two Harbors Plant Lake County, MN								
Unit 1	77		301	2,210				
<b>Virginia Public Utilities</b>								
Virginia Power Plant St. Louis County, MN								
Units 1, 5 & 6	43,993	81,813						
<b>Warren, City of^^</b>								
Warren Plant Marshall County, MN								
Unit 1	2			125				
Unit 2	5			215				
Unit 3	0			18				
Unit 4	8			70				
<b>Wells Public Utilities</b>								
Wells Plant Fairbault County, MN								
Unit 1	211		1,966	5,720				
Unit 2	233		2,679	1,600				
Unit 3	42		125	2,920				
Unit 4	353		3,774	2,980				
Unit 5	85		0	6,365				



2005	Net MWh Generation*	Fuel Used						
		Coal (Tons)	Nat Gas (MCF)	Fuel Oil #2** (Gallons)	Fuel Oil #6 (Gallons)	Nuclear (Mbtu)	Other*** (Tons)	
<b>Willmar Municipal Utilities</b>								
Willmar Plant Kandiyohi County, MN								
Unit 2	41		850					
Unit 3	47,963	47,499	30,349					
Unit 4	218			15,275				
<b>Windom Municipal Utilities</b>								
Windom Gas Turbine Cottonwood County, MN								
Unit 1	11			1,240				
Unit 2	8			592				
Unit 3	8			560				
Unit 4	8			587				
<b>Worthington Public Utilities</b>								
Worthington Diesel Generating Plant Nobles County, MN								
Unit 1	117			8,220				

2005	Net MWh Generation*	Fuel Used						
		Coal (Tons)	Nat Gas (MCF)	Fuel Oil #2** (Gallons)	Fuel Oil #6 (Gallons)	Nuclear (Mbtu)	Other*** (Tons)	
<b>Xcel Energy</b>								
Allen S. King Washington County, MN								
Unit 1	2,796,588	1,541,978	1,492					
Alliant Tech Systems Hennepin County, MN								
Units 1 & 2	58			1,375				
Angus Anson Minnehaha County, SD								
Units 2 - 4	243,960		3,300,675	1,111,000				
Apple River Hydroelectric St. Croix County, WI								
Units 1 - 4	13,667							
Bayfront Steam Ashland County, WI								
Units 4 - 6	337,076	155,049	279,950				142,604	
Big Falls Hydroelectric Rusk County, WI								
Units 1 - 3	29,981							
Black Dog Steam Dakota County, MN								
Unit 2	161,805							
Unit 3	520,520	349,724	159,648					
Unit 4	1,165,668	708,981	107,867					
Unit 5	373,347		4,282,856					

2005	Net MWh Generation*	Fuel Used						
		Coal (Tons)	Nat Gas (MCF)	Fuel Oil #2** (Gallons)	Fuel Oil #6 (Gallons)	Nuclear (Mbtu)	Other*** (Tons)	
<b>Xcel Energy, continued</b>								
Blue Lake Gas Turbine Scott County, MN								
Units 1 - 4, 7 & 8	190,585		1,362,790	2,551,497				
Cedar Falls Hydroelectric Dunn County, WI								
Units 1 - 3	28,788							
Chippewa Falls Hydro Chippewa County, WI								
Units 1 - 6	49,204							
Cornell Hydroelectric Chippewa County, WI								
Units 1 - 4	65,377							
Dells Hydroelectric Eau Claire County, WI								
Units 1 - 7	34,960							
Flambeau Price County, WI								
Unit 1	297		8,072	19,927				
French Island Gas Turbine La Crosse County, WI								
Units 3 & 4	14,279			1,850,953				
French Island Steam Plant La Crosse County, WI								
Units 1 & 2	73,594		3,234					111,034

2005	Net MWh Generation*	Fuel Used						
		Coal (Tons)	Nat Gas (MCF)	Fuel Oil #2** (Gallons)	Fuel Oil #6 (Gallons)	Nuclear (Mbtu)	Other*** (Tons)	
<b>Xcel Energy, continued</b>								
Granite City Gas Turbine Sherburne County, MN								
Units 1 - 4	671		36,746	8,260				
Hayward Hydroelectric Sawyer County, WI								
Unit 1	1,504							
Hennepin Island Hydro Hennepin County, MN								
Units 1 - 5	60,536							
High Bridge Steam Ramsey County, MN								
Unit 4	8,131							
Unit 5	489,977	305,101	235,423					
Unit 6	875,624	492,348	332,536					
Holcombe Hydroelectric Chippewa County, WI								
Units 1 - 3	73,218							
Inver Hills Gas Turbine Dakota County, MN								
Units 1 - 6	78,547		1,403,316	688,850				
Jim Falls Hydroelectric Chippewa County, WI								
Units 1 & 2	94,548							

2005	Net MWh Generation*	Fuel Used						
		Coal (Tons)	Nat Gas (MCF)	Fuel Oil #2** (Gallons)	Fuel Oil #6 (Gallons)	Nuclear (Mbtu)	Other*** (Tons)	
<b>Xcel Energy, continued</b>								
Key City Gas Turbine Blue Earth County, MN								
Units 1 - 4	5,601		94,587					
Ladysmith Hydroelectric Rusk County, WI								
Units 1 - 3	9,004							
Menomonie Hydroelectric Dunn County, WI								
Units 1 & 2	21,808							
Minnesota Valley Steam Chippewa County, MN								
Unit 3	536		1					
Monticello Nuclear Wright County, MN								
Unit 1	4,474,918					46,718,460		
Prairie Island Nuclear Goodhue County, MN								
Unit 1	4,518,364					47,112,715		
Unit 2	3,844,937					40,671,663		
Red Wing Steam Goodhue County, MN								
Units 1 & 2	100,316		31,964					193,840

2005	Net MWh Generation*	Fuel Used						
		Coal (Tons)	Nat Gas (MCF)	Fuel Oil #2** (Gallons)	Fuel Oil #6 (Gallons)	Nuclear (Mbtu)	Other*** (Tons)	
<b>Xcel Energy, continued</b>								
Riverdale Hydroelectric St. Croix County, WI								
Units 1 & 2	2,661							
Riverside Steam Hennepin County, MN								
Unit 7	917,505	611,111	12,550					
Unit 8	1,390,958	731,589		57,161				
Saxon Falls Hydroelectric Jackson County, WI								
Units 1 & 2	11,022							
Sherburne Cnty Steam (59% share Unit 3) Sherburne County, MN								
Unit 1	4,972,513	2,916,934		125,600				
Unit 2	4,703,775	2,813,755		187,750				
Unit 3	2,778,595	1,641,933		606,550				
St. Croix Falls Hydroelectric Polk County, WI								
Units 1 - 8	115,588							
Superior Falls Hydroelectric Gogebic County, MI								
Units 1 & 2	12,313							

2005	Net MWh Generation*	Fuel Used						
		Coal (Tons)	Nat Gas (MCF)	Fuel Oil #2** (Gallons)	Fuel Oil #6 (Gallons)	Nuclear (Mbtu)	Other*** (Tons)	
<b>Xcel Energy, continued</b>								
Thornapple Hydroelectric Rusk County, WI	7,957							
Trego Hydroelectric Washburn County, WI	6,540							
United Health Care Hennepin County, MN	42			3,874				
United Hospital Ramsey County, MN	165			1,000				
West Faribault Jet Engine Rice County, MN	240		13,319					
Wheaton Chippewa County, WI	54,694		772,124	2,670,689				
White River Hydroelectric Ashland County, WI	4,333							

2005	Fuel Used							Other*** (Tons)
	Net MWh Generation*	Coal (Tons)	Nat Gas (MCF)	Fuel Oil #2** (Gallons)	Fuel Oil #6 (Gallons)	Nuclear (Mbtu)		
<b>Xcel Energy, continued</b>								
Wilmarth Steam Blue Earth County, MN								
Units 1 & 2	105,429		35,269				173,813	
Wisconsin Hydroelectric Chippewa County, WI								
Units 1 - 6	103,123							
<b>PUBLIC UTILITY TOTALS</b>	90,929,129	47,829,459	34,532,076	29,548,869	3,576,158	167,541,756	1,230,699	

Notes for Table 10

\* Net generation values of zero indicate less than one MWh of production; however, values are included in the Public Utility Total. Negative net generation values indicate that the station electric consumption exceeded the gross generation of the plant. However, these plants did produce positive amounts of energy during the year.

\*\* Fuel Oil #2 includes Diesel Fuel.

\*\*\* "Other" fuels include landfill gas, wood, woody by-products, tire- and refuse-derived fuel.

\*\*\*\* Nuclear Mbtu is estimated.

^^ Data is from 2003.

^^^ Total for all units.



## Section II: Natural Gas Utilities

### Overview

Natural gas companies in Minnesota are owned both privately and publicly. These distribution companies deliver gas to customers, regardless of whether the utility or a third party<sup>1</sup> purchases the gas for the customer. The Minnesota Public Utilities Commission regulates the rates of large privately-owned local distribution companies (LDCs). The Commission generally does not regulate rates of publicly-owned utilities. The Commission also does not regulate rates of privately-owned companies that are smaller than legislatively set limits. As Figure 3 below shows, LDCs distribute most of Minnesota's natural gas.

**Figure 3: Natural Gas Throughput Reported by Type of Utility<sup>2</sup>**



In 2005 there were seven investor-owned local distribution companies serving customers in Minnesota. There were four small privately-owned and 29 municipal gas utilities serving Minnesota customers.

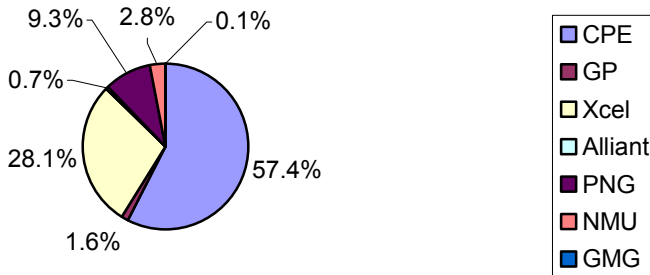
---

<sup>1</sup> Certain customers can purchase natural gas supplies from companies that are not regulated by state authorities. However, these customers must still transport the gas through their state-regulated local natural gas companies.

<sup>2</sup> See Table 13 for consumption by company.

As Figure 4 shows, CenterPoint Energy is the largest investor-owned utility, followed by Xcel Energy and Aquila Networks-Peoples Natural Gas. The investor-owned company with the smallest Minnesota consumption in 2005 was Greater Minnesota Gas Inc.

**Figure 4: Natural Gas Consumption Reported by Investor-Owned Utilities**



### Investor-Owned Natural Gas Companies<sup>3</sup>

**CPE:** CenterPoint Energy

**GP:** Great Plains Natural Gas Co.

**Xcel:** Xcel Energy

**Alliant:** Interstate Power Company

**NMU:** Aquila Networks-Northern Minnesota Utilities

**PNG:** Aquila Networks-Peoples Natural Gas Co.

**GMG:** Greater Minnesota Gas Inc.

---

<sup>3</sup> See Table 13 for consumption by company.

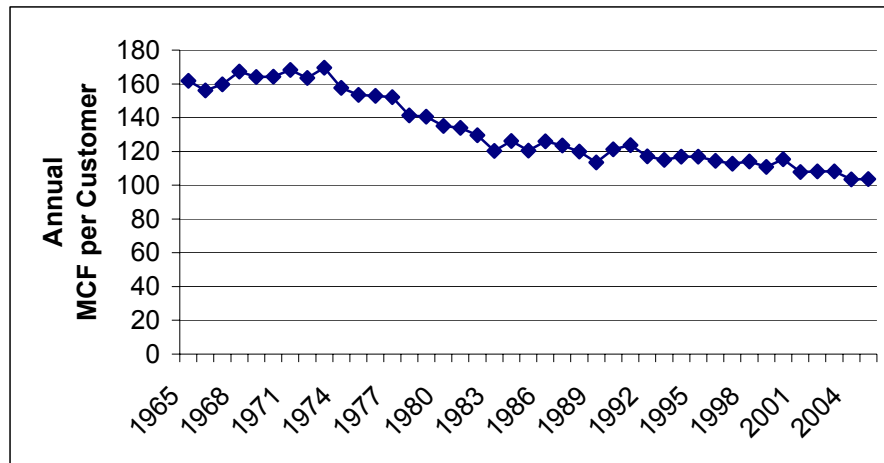
## Introduction to Natural Gas Tables

The tables in this section provide both aggregate and individual company information reported by natural gas companies serving Minnesota. Tables 11 and 12 provide overall natural gas consumption and numbers of natural gas customers in Minnesota.

Tables 13 and 14 provide natural gas consumption and numbers of natural gas customers reported by each natural gas company serving Minnesota in 2005. Table 15 provides revenues reported by the natural gas companies.

Table 11 indicates that 2005 consumption of natural gas in the residential sector was 3 percent lower than 2004 consumption. As Figure 5 below indicates, residential consumption of natural gas on a weather-normalized basis has declined since 1973 but has remained relatively steady in recent years.

**Figure 5: Weather-Normalized Natural Gas Use Per Residential Customer**



**Table 11: Total Minnesota Historical Natural Gas Consumption**

Minnesota Natural Gas Consumption (1,000 MCF)

Year	Residential	Commercial	Industrial*	Company Use	Unaccounted For	Deliveries to Transportation <sup>^</sup>	Total
1965	87,309	52,121	107,914	952	524	0	248,821
1966	87,586	51,739	124,548	1,027	898	0	265,798
1967	89,671	61,014	130,519	1,076	1,002	0	283,282
1968	91,597	63,783	149,646	1,228	845	0	307,098
1969	97,181	69,359	147,976	1,218	726	0	316,460
1970	102,625	74,096	149,782	1,099	1,040	0	328,642
1971	103,291	74,081	155,428	1,195	1,009	0	335,004
1972	112,303	79,578	140,631	1,247	1,007	0	334,765
1973	98,547	80,111	159,942	1,396	256	0	340,253
1974	102,861	79,637	143,553	1,333	625	0	328,009
1975	104,377	78,752	121,772	1,158	122	0	306,181
1976	106,415	74,651	103,545	2,657	765	0	288,033
1977	101,361	72,167	84,873	225	158	0	258,784
1978	106,238	77,378	86,263	335	1,488	0	271,701
1979	111,917	79,599	95,839	570	(1,227)	0	286,699
1980	103,208	80,845	90,551	342	1,650	0	276,596
1981	95,969	77,263	84,288	304	58	0	257,882
1982	107,478	83,208	64,473	463	(1,957)	0	253,664
1983	97,359	79,025	59,101	231	3,746	0	239,470
1984	101,868	82,770	64,584	258	(587)	0	248,893
1985	106,870	85,273	63,096	213	1,515	0	256,967
1986	103,139	80,382	52,364	238	(3,278)	0	232,846
1987	89,919	70,581	51,064	275	19	11,736	223,594
1988	108,423	85,462	41,344	284	1,060	32,916	269,489

Table 11, continued: Minnesota Natural Gas Consumption (1,000 MCF)

Year	Residential	Commercial	Industrial*	Company Use	Unaccounted For	Deliveries to Transportation <sup>^</sup>	Total
1989	112,496	84,155	41,804	275	965	40,567	280,262
1990	106,894	85,978	44,635	217	(2,790)	48,843	283,777
1991	117,229	86,312	39,586	223	2,098	59,221	304,668
1992	113,160	83,255	36,977	430	3,260	57,086	294,169
1993	124,114	85,505	43,331	225	2,288	51,129	306,592
1994	121,450	80,888	42,452	335	1,014	59,177	305,317
1995	128,458	86,473	37,945	257	1,860	76,072	331,065
1996	142,268	94,824	44,429	333	1,938	61,007	344,799
1997	129,182	96,089	42,294	305	1,054	64,380	333,304
1998	110,934	84,596	43,837	194	1,673	63,934	305,168
1999	118,941	90,294	42,454	344	2,001	64,457	318,490
2000	128,327	95,888	41,314	142	2,441	64,273	332,385
2001	125,984	95,662	37,915	159	2,691	51,024	313,435
2002	134,665	98,443	36,122	148	356	65,162	334,896
2003	137,622	97,539	39,080	201	1,062	58,626	334,130
2004	132,909	93,936	33,026	201	2,068	62,404	324,545
2005	128,883	92,825	41,751	168	2,752	62,576	328,956

Notes for Table 11

\* Industrial data includes natural gas sold to produce electricity.

<sup>^</sup> Some natural gas customers can purchase gas supplies from unregulated natural gas suppliers and transport this gas through regulated utilities' systems.

**Table 12: Number of Minnesota Natural Gas Customers**

<b>Year</b>	<b>Residential Firm</b>	<b>Commercial Firm*</b>	<b>Commercial Interruptible*</b>	<b>Industrial Firm*</b>	<b>Industrial Interruptible*</b>	<b>Total</b>
1965	513,568	40,432	3,324	709	725	558,758
1966	529,405	42,649	3,540	728	797	577,119
1967	546,115	45,352	3,799	758	932	596,956
1968	563,641	47,825	4,047	795	1,022	617,330
1969	577,380	49,670	4,179	818	1,044	633,091
1970	591,584	51,649	4,300	825	1,085	649,443
1971	603,357	53,230	4,418	838	1,137	662,980
1972	615,681	55,198	4,487	849	1,167	677,382
1973	631,314	56,701	4,670	861	1,210	694,756
1974	653,376	59,660	4,796	882	1,262	719,976
1975	666,996	60,972	4,789	967	1,270	734,994
1976	678,811	61,993	4,895	953	1,231	747,883
1977	691,089	62,778	4,910	929	1,249	760,955
1978	710,498	64,665	4,874	867	1,160	782,064
1979	732,503	66,974	4,556	855	1,224	806,112
1980	767,457	70,997	4,283	881	1,209	844,827
1981	785,008	73,204	4,168	972	1,136	864,488
1982	792,088	75,016	3,529	1,012	1,011	872,656
1983	803,542	76,605	3,374	979	881	885,381
1984	822,509	79,032	3,371	1,098	950	906,960
1985	841,760	82,256	3,417	1,072	983	929,488
1986	860,695	85,063	3,581	1,023	800	951,162
1987	884,476	86,887	3,523	1,036	823	976,745
1988	904,515	88,675	3,452	1,067	783	998,492
1989	935,252	91,628	3,371	1,085	788	1,032,124
1990	962,006	94,214	3,264	1,088	797	1,061,369
1991	979,426	95,641	3,263	1,072	702	1,080,104
1992	1,008,912	97,810	3,272	1,118	749	1,111,861
1993	1,034,433	98,917	3,174	1,074	526	1,138,124
1994	1,060,692	100,952	3,359	987	667	1,166,657
1995	1,091,477	102,097	3,343	814	672	1,198,403
1996	1,124,739	105,158	3,471	842	773	1,234,983
1997	1,151,421	107,223	3,422	772	753	1,263,591
1998	1,176,228	109,220	3,718	610	832	1,290,612
1999	1,201,349	115,901	3,875	473	986	1,340,315
2000	1,238,679	114,271	3,917	659	898	1,358,424
2001	1,263,214	116,640	3,951	693	853	1,385,351
2002	1,293,734	119,032	3,974	697	785	1,418,222
2003	1,323,721	120,598	3,882	729	809	1,449,739
2004	1,354,242	122,898	3,823	741	815	1,482,519
2005	1,378,515	123,659	3,903	746	770	1,507,593

Note for Table 12

\*Sales and transportation customers are combined.

**Table 13: Minnesota Natural Gas Consumption by Company**

Minnesota Natural Gas Consumption (MCF) by Company in 2005

2005	Residential	Commercial	Industrial	Company Use	Unaccounted For	Deliveries to Transportation Customers	Electric Generation	Total
Alliant Energy	838,792	560,575	334,153	1,038	21,989	134,299	0	1,890,846
Aquila Networks-NMU	3,170,952	3,159,872	592,390	3,687	0	7,879,872	0	14,806,773
Aquila Networks-PNG	13,349,878	8,566,927	1,023,282	8,768	0	36,582,116	0	59,530,971
Argyle, City of	14,952	13,758	0	0	0	0	0	28,710
Austin Utilities-Gas Dept	1,171,545	279,524	*	14,632	70,441	0	*	2,180,289
Bagley PUC**	18,652	40,679	0	0	0	0	0	59,331
CenterPoint Energy	66,819,455	53,789,411	16,858,997	68,840	1,989,781	8,346,947	4,521,761	152,395,192
Circle Pines Utilities	223,748	150,921	0	4,084	(5,586)	0	0	373,167
Cohasset, City of	98,786	17,850	23,993	0	0	0	0	140,629
Community Utilities Co. Inc.	62,021	22,463	20,491	0	0	0	0	104,975
Duluth Dept of Public Wrks & Util	2,579,783	1,789,468	384,843	0	(599,475)	0	0	4,154,619
Eagle Bend/Clarissa Gas Util	29,455	60,833	0	0	0	0	0	90,288
Fairfax Municipal Gas	38,570	18,000	5,700	1,299	0	1,228,297	0	1,291,866
Fosston Municipal Utilities	19,578	17,960	130,136	0	0	0	0	167,674
Goodhue PUC	3,375	2,262	0	0	0	0	0	5,637
Great Plains Nat Gas Co	1,498,014	1,487,240	*	7,060	0	1,178,002	*	5,072,177
Greater Minnesota Gas, Inc.	227,942	21,503	40,887	0	0	17,280	0	307,612
Hallock, City of	47,421	15,120	0	1,260	0	0	0	63,801
Hawley Pub Util-Nat Gas**	41,213	34,591	0	0	(927)	0	0	74,877
Henning Municipal Gas	33,102	21,225	0	0	0	0	0	54,327
Hibbing PUC	357,369	*	0	0	13,130	0	*	649,902

Table 13, continued: Minnesota Natural Gas Consumption (MCF) by Company in 2005

2005	Residential	Commercial	Industrial	Company Use	Unaccounted For	Deliveries to Transportation Customers	Electric Generation	Total
Hutchinson Utilities Commission	428,775	366,547	488,995	10,277	44,066	0	216,340	1,555,000
Lake Park Pub Utilities	23,649	13,536	0	0	0	0	0	37,185
Morgan Natural Gas Services	13,833	*	*	0	0	0	0	33,693
New Ulm PUC	439,986	164,557	*	23,692	0	514,685	*	1,479,024
New York Mills Mun Gas	40,915	55,813	0	0	1,200	0	0	97,928
NW Gas of Cass County	14,224	31,101	27,387	0	0	0	0	72,712
NW Natural Gas LLC	109,296	35,946	33,521	0	0	0	0	178,763
NW Nat Gas of Murray Cnty Inc	43,287	28,043	24,497	0	0	0	0	95,827
Owatonna Pub Utilities	850,415	571,063	753,624	0	(18,273)	0	22,469	2,179,298
Perham, City of	196,663	84,670	652,428	0	0	0	0	933,761
Randall Municipal Gas	18,280	*	*	0	0	0	0	31,856
Round Lake, City of	11,177	6,558	7,950	0	(370)	0	0	25,315
Stephen Mun Gas	18,718	9,725	0	0	2,056	0	0	30,499
Two Harbors Mun Gas	165,739	111,527	208,033	0	0	0	0	485,299
Tyler, City of <sup>^</sup>	27,454	8,211	0	0	0	0	0	35,665
Virginia Public Utilities	142,052	191,243	0	0	0	0	243	333,538
Warren, City of**	47,257	49,948	0	0	0	0	0	97,205
Westbrook Public Utilities	383,473	0	0	0	0	0	0	383,473
Xcel Energy	35,315,039	20,716,994	11,303,675	18,567	1,086,927	6,694,762	2,189,333	77,325,297
<b>TOTAL</b>	<b>128,934,835</b>	<b>92,824,668</b>	<b>34,629,088</b>	<b>163,204</b>	<b>2,604,959</b>	<b>62,576,260</b>	<b>7,121,987</b>	<b>328,855,001</b>

Notes for Table 13

\* Withheld to avoid disclosure of individual company information. Data included in totals.

\*\* 2005 data not provided. Data is from 2004

<sup>^</sup> Data is from 2003.



**Table 14: Minnesota Natural Gas Customers by Company**

2005	Residential Firm	Commercial Firm*	Commercial Interruptible*	Industrial Firm*	Industrial Interruptible*	Electric Generation *	Total
Alliant Energy	9,307	1,175	43	10	12	-	10,547
Aquila Networks-NMU	32,990	5,257	135	50	13	-	38,445
Aquila Networks-PNG	146,047	15,201	359	151	99	-	161,857
Argyle, City of	203	38	-	-	-	-	241
Austin Utilities-Gas Dept	10,282	43	40	1	3	1	10,370
Bagley PUC^	348	98	-	-	-	-	446
CenterPoint Energy	713,706	61,802	2,547	247	341	19	778,662
Circle Pines Utilities	2,741	165	3	-	-	-	2,909
Cohasset, City of	666	37	-	4	-	-	707
Community Utilities Co. Inc.	671	82	-	9	-	-	762
Duluth Dept of Public Works & Util	23,143	1,832	80	15	15	-	25,085
Eagle Bend/Clarissa Gas Util	447	91	-	-	-	-	538
Fairfax Municipal Gas	490	67	-	4	-	-	561
Fosston Municipal Utilities	324	71	-	3	-	-	398
Goodhue PUC	416	16	-	-	-	-	432
Great Plains Nat Gas Co	18,012	2,622	137	-	12	1	20,784
Greater Minnesota Gas, Inc.	2,617	159	-	21	1	-	2,798
Hallock, City of	418	10	-	-	-	-	428
Hawley Pub Util-Nat Gas^	487	80	-	-	-	-	567
Henning Municipal Gas	342	44	-	-	-	-	386
Hibbing PUC	3,221	375	14	-	-	1	3,611

Table 14, continued: Minnesota Natural Gas Customers by Company in 2005

2005	Residential Firm	Commercial Firm*	Commercial Interruptible*	Industrial Firm*	Industrial Interruptible*	Electric Generation*	Total
Hutchinson Utilities Commission	4,617	498	5	2	1	2	5,125
Lake Park Pub Utilities	280	54	-	-	-	-	334
Morgan Natural Gas Services	259	24	-	1	-	-	284
New Ujm PUC	5,372	438	102	14	31	1	5,958
New York Mills Municipal Gas	438	75	-	-	-	-	513
Northwest Gas of Cass County	196	78	-	10	-	-	284
NW Natural Gas LLC	1,385	220	-	-	15	-	1,620
NW Natural Gas of Murray Cnty., Inc.	620	117	-	-	10	-	747
Owatonna Pub Utilities	9,000	742	-	-	63	9	9,814
Perham, City of	2,372	64	-	1	29	-	2,466
Randall Municipal Gas	227	34	1	1	-	-	263
Round Lake, City of	151	27	1	4	1	-	184
Stephen Municipal Gas	203	57	-	-	-	-	260
Two Harbors Municipal Gas	1,420	197	6	27	-	-	1,650
Tyler, City of^^	310	65	-	-	-	-	375
Virginia Public Utilities	1,407	297	1	-	-	2	1,707
Warren, City of^	496	112	-	-	-	-	608
Westbrook Public Utilities	290	-	-	-	-	-	290
Xcel Energy	382,594	31,295	429	129	124	6	414,577
<b>TOTAL</b>	<b>1,378,515</b>	<b>123,659</b>	<b>3,903</b>	<b>704</b>	<b>770</b>	<b>42</b>	<b>1,507,593</b>

Notes for Table 14

\* Sales and transportation customers are combined.

^ 2005 data not provided. Data is from 2004.

^^ Data is from 2003.

**Table 15: Minnesota Natural Gas Revenue by Company**

2005	Residential	Commercial Firm	Commercial Interruptible	Industrial Firm^^	Industrial Interruptible	Total
Alliant Energy	\$9,806,572	\$4,233,442	\$1,635,232	\$161,034	\$2,690,020	\$18,526,300
Aquila Networks-NMU	\$34,548,316	\$23,928,434	\$7,752,359	\$728,701	\$5,395,832	\$72,353,642
Aquila Networks-PNG	\$141,914,717	\$69,240,434	\$15,701,478	\$3,070,382	\$9,829,504	\$239,756,515
Argyle, City of	\$164,526	\$161,359	\$0	\$0	\$0	\$325,885
Austrin Utilities-Gas Dept	\$12,605,959	\$642,845	\$2,417,328	\$1,233,219	\$3,191,590	\$20,090,941
Bagley PUC**	\$195,553	\$364,582	\$0	\$0	\$0	\$560,135
CenterPoint Energy	\$727,545,424	\$319,674,205	\$201,799,814	\$6,521,453	\$175,330,358	\$1,430,871,254
Circle Pines Utilities	\$2,663,228	\$824,200	\$647,953	\$0	\$0	\$4,135,381
Cohasset, City of	\$403,297	\$92,121	\$0	\$92,456	\$0	\$587,874
Community Utilities Co. Inc.	\$805,242	\$281,654	\$0	\$252,983	\$0	\$1,339,879
Duluth Dept of Public Works & Util	\$31,773,841	\$13,227,908	\$5,905,277	\$337,548	\$3,129,222	\$54,373,796
Eagle Bend/Clarissa Gas Util	\$371,083	\$640,180	\$0	\$0	\$0	\$1,011,263
Fairfax Municipal Gas	\$485,754	\$214,166	\$0	\$61,667	\$0	\$761,587
Fosston Municipal Util	\$221,138	\$209,555	\$0	\$1,230,009	\$0	\$1,660,702
Goodhue PUC	\$410,696	\$271,911	\$0	\$0	\$0	\$682,607
Great Plains Nat Gas Co	\$16,783,478	\$9,830,682	\$5,212,967	*	*	\$39,373,886
Greater Minnesota Gas, Inc.	\$2,865,842	\$6,701	\$0	*	*	\$3,485,846
Hallock, City of	\$467,809	\$138,900	\$0	\$0	\$0	\$606,709
Hawley Pub Util-Nat Gas**	\$358,475	\$326,098	\$0	\$0	\$0	\$684,573
Henning Municipal Gas	\$410,055	\$247,318	\$0	\$0	\$0	\$657,373
Hibbing PUC	\$5,943,610	\$651,992	\$26,269	\$0	\$0	\$6,621,871

Table 15, continued: Minnesota Natural Gas Revenue by Company in 2005

2005	Residential		Commercial		Commercial		Industrial		TOTAL
			Firm	Interruptible	Firm^^	Interruptible	Firm^^	Interruptible	
Hutchinson Utilities Comm.	\$4,211,085		\$2,538,568	\$974,008	*		*	\$12,127,818	
Lake Park Pub Utilities	\$229,330		\$136,197	\$0		\$0	\$0	\$365,527	
Morgan Natural Gas Services	\$190,669		*	\$0		\$0	\$0	\$434,312	
New Ulm PUC	\$4,535,795		\$1,035,428	\$606,339		\$0	\$215,242	\$6,392,804	
New York Mills Mun Gas	\$418,679		\$517,715	\$0		\$0	\$0	\$936,394	
NW Gas of Cass County	\$184,604		\$349,524	\$0		\$286,644	\$0	\$820,772	
NW Natural Gas LLC	\$1,475,957		\$444,848	\$0		\$0	\$382,551	\$2,303,356	
NW Nat Gas of Murray Cnty.	\$587,543		\$345,091	\$0		\$0	\$285,719	\$1,218,353	
Owatonna Pub Utilities	\$9,895,725		\$5,812,096	\$0		\$0	\$6,711,659	\$22,419,480	
Perham, City of	\$2,482,480		*	\$0		*	\$4,877,882	\$8,699,176	
Randall Municipal Gas	\$228,610		\$102,253	*		\$0	\$0	\$376,657	
Round Lake, City of	\$117,594		\$36,156	*		\$35,080	*	\$268,782	
Stephen Mun Gas	\$209,195		\$99,148	\$0		\$0	\$0	\$308,343	
Two Harbors Mun Gas	\$1,616,123		\$552,791	\$488,627		\$1,719,572	\$0	\$4,377,113	
Tyler, City of^^	\$241,060		\$98,461	\$0		\$0	\$0	\$339,521	
Virginia Public Utilities	\$1,483,230		*	*		\$0	\$0	\$3,338,187	
Warren, City of	\$427,541		\$439,602	\$0		\$0	\$0	\$867,143	
Westbrook Public Utilities	\$384,169		\$0	\$0		\$0	\$0	\$384,169	
Xcel Energy***	\$415,668,864		\$187,284,637	\$28,236,120		\$20,970,340	\$71,538,025	\$725,113,550	
<b>TOTAL</b>	<b>\$1,435,332,868</b>		<b>\$647,877,223</b>	<b>\$271,524,229</b>		<b>\$41,911,292</b>	<b>\$291,498,300</b>	<b>\$2,689,559,476</b>	

Notes for Table 15

^ Includes natural gas sales and transportation. ^^ May include electric generation.

^^^ Data is from 2003.

\* Withheld to avoid disclosure of individual company information. Data included in totals.

\*\* 2005 data not provided. Data is from 2004.

\*\*\* Sales revenue from transportation customers by customer class not reported.

## Section III: Attachments

### ***General Notes on Data***

1) **Consumption.** In general, electric companies report retail electric consumption as follows:

Farm. Electricity supplied to farm households and for agricultural purposes.

Residential. Electricity supplied to non-farm private households.

Commercial. Electricity supplied to small commercial and industrial power accounts. May include use by some apartment dwellers.

Industrial. Electricity supplied to large commercial and industrial power accounts, including mining accounts.

2) **Missing Data.** Although all utilities are required to report data used in this report annually, some utilities have provided either partial information or no information. In some places, this report notes where these utilities have not reported information. In other places, for the general purpose of comparing 2005 data to previous years' data, this report shows the most recent comparable data for non-reporting companies.

3) **Accuracy of Data.** While the Department does not audit the records supporting the data companies provide, we do check the reasonableness of the data. We also correct errors in reported data where feasible. However, some data reported by smaller companies may contain a few errors or inconsistencies. These errors should not significantly affect the totals.

## ***Glossary of Terms and Abbreviations***

**Btu:** British thermal unit; the amount of heat required to raise the temperature of one pound of water one degree Fahrenheit under stated conditions of pressure and temperature (equal to 252 calories, 778 foot-pounds, 1,005 joules and 0.293 watt-hours). It is the U.S. customary unit of measuring the quality of heat, such as the heat content of fuel.

**cf:** cubic foot; the U.S. customary unit of measurement of gas volume. It is the amount of gas required to fill a volume of one cubic foot under stated conditions of temperature, pressure and water vapor. One cubic foot of natural gas equals 1,000 British thermal units under standard conditions of atmosphere (one) and temperature (60 degrees Fahrenheit).

**Ccf:** one hundred cubic feet.

**Cooperative utility:** a utility owned and operated by its members.

**Department of DOC:** the Minnesota Department of Commerce.

**Gas turbine:** a type of electric generation plant that relies on turbines driven by the combustion of natural gas or diesel fuel to produce electricity.

**GWh:** gigawat-hour; the unit of energy equal to that expended in one hour at a rate of one billion watts. One GWh equals 1,000 megawatt-hours.

**Hydro:** a type of electric generation plant that relies on a water wheel to convert falling water into electricity.

**Int. comb. (Internal Combustion):** a type of electric generation unit that relies on an internal combustion engine to convert burned diesel, fuel oil, gasoline, or natural gas into electricity.

**Investor-owned utility (IOU):** Common term for an electric privately-owned utility regulated by the Minnesota Public Utilities Commission.

**kW:** one kilowatt or one thousand watts.

**Local Distribution Company (LDC):** Common term for a gas privately-owned utility regulated by the MPUC.

**Mcf:** one thousand cubic feet; a unit of measure of gas volume.

**Minnesota Public Utilities Commission (Commission):** the state agency with regulatory jurisdiction over certain Minnesota utilities.

**MWh:** megawatt-hour; the unit of energy equal to that expended in one hour at a rate of one million watts. One MWh equals 3,414,000 Btus.

**Natural Gas (gas):** a mixture of hydrocarbon compounds and small quantities of various non-hydrocarbons existing in the gaseous phase or in solution with crude oil in natural underground reservoirs. It comes from the ground with or without crude oil and is generally much higher in heat content than manufactured gas.

**Net generation:** the total amount of electric energy produced by a generating unit less the electricity consumed by the generating station.

**Nuclear:** a type of electric generation plant that uses energy obtained by fission, fusion or by radioactive decay to drive the turbines.

**Number 2 fuel oil:** a distillate fuel oil used for domestic heating and in moderate capacity commercial or industrial burners as well as for generating electricity.

**Number 6 fuel oil:** a residual fuel oil that is heavier than distillate fuel oil and is used to generate electricity as well as in industrial burners.

**Plant capacity:** the amount of electric load, measured in megawatts or kilowatts, for which a generating unit is rated either by the user or the manufacturer.

**Privately-owned utilities:** utility corporations owned by shareholders. Large privately-owned utilities are regulated by the Minnesota Public Utilities Commission.

**Publicly-owned utilities:** utilities owned, operated and regulated by the city or legal entity in which it resides.

**REIS:** Regional Energy Information System; the Minnesota Department of Commerce's computerized state energy data collection and information system. It includes energy data the DOC collects directly from energy suppliers as well as data collected by other state departments such as the Minnesota Department of Revenue, Petroleum Tax Division.

**RDF:** refuse-derived fuel, composed of garbage, that is used in some electric generation plants.

**Steam:** a type of electric generation plant that relies on steam-driven turbines to generate electricity. Steam is produced in a boiler heated by several combinations of fossil, refuse-derived, or wood-waste fuels.

**Transportation (of natural gas):** the action taken by a retail customer who purchases natural gas supplies directly from a supplier or marketer and then moves or transports the gas through a utility's distribution system to the customer's destination.

**Watt:** the unit of measure for electric power or rate of doing work. The rate of energy transfer equivalent to one ampere flowing under pressure of one volt.

**Weather-normalized information:** information adjusted to remove fluctuation due to changes in weather.

**Wind:** a type of electric generation plant that uses turbines powered by wind to generate electricity.