

# UNIVERSITY OF MINNESOTA

---

*Office of Vice President and  
Chief Financial Officer  
Treasurer*

*Office of the President*

*334B Morrill Hall  
100 Church Street S.E.  
Minneapolis, MN 55455*

*Office: 612-625-4517  
Fax: 612-626-2278  
Website: <http://www.budget.umn.edu/>  
Email: [ubudget@umn.edu](mailto:ubudget@umn.edu)*

08 - 0313

January 31, 2007

Patrick Flahaven  
Secretary of the Senate  
231 State Capitol  
75 Rev. Dr. Martin Luther King Jr. Blvd.  
St. Paul MN 55155-1606

Al Mathiowetz  
Chief Clerk of the House  
211 State Capitol  
75 Rev. Dr. Martin Luther King Jr. Blvd.  
St. Paul MN 55155-1606

Re: UMore Park/US Army Corp of Engineers Mandated Report

Dear Sirs:

The Board of Regents of the University of Minnesota submits the following report to the Legislature regarding the efforts by the University of Minnesota (University) and the Department of Defense (DoD) to investigate and remedy environmental contamination present on the "University land," which was caused by activities associated with the former Gopher Ordnance Works (GOW). This report is submitted pursuant to Minn. Stat. § 137.52(b).

Under the Defense Environmental Restoration Program, 10 U.S.C. 2701, *et seq.*, DoD is charged with environmental restoration of formerly used defense sites (FUDS). The FUDS program is administered by the United States Army Corps of Engineers (USACE). The MPCA, under a Defense State Memorandum of Agreement (DSMOA), provides oversight to USACE of FUDS located within the state of Minnesota. USACE has determined that GOW qualifies as an "eligible" FUDS.

In late September 2006, USACE advised the University that it had retained an environmental consultant (St. Paul office of Bay West, Inc.) to develop a work plan for a Site Inspection (SI) at UMore Park. The SI will include testing of soil and groundwater to identify any releases or threatened releases of hazardous substances, pollutants or contaminants to the environment caused by GOW activities.

The SI will address six Areas of Concern (AOCs) associated with GOW. These AOCs were identified in a Preliminary Assessment Report prepared by USACE dated March 2006 (March 2006 PA) regarding the portion of GOW transferred by the United States to the University in 1947. The "University land" as defined in Minn. Stat. § 137.50, subd. 6 of the stadium legislation, was acquired as part of the 1947 transaction. Three of the AOCs to be investigated as part of the SI (AOCs 1-3) are located in whole or in part on the University land. The following attachments are submitted with this report:

- Attachment 1—Approximate boundaries of the 2,840 acre parcel addressed in the Stadium legislation defined in the stadium legislation as the University land.
- Attachment 2—Approximate locations of the six AOCs identified in the March 2006 PA.

UMore Park/US Army Corp of Engineers Mandated Report

January 31, 2007

Page 2

The MPCA, through the DSMOA, will review and approve the SI work plan before it is implemented. The University understands that the field work associated with the SI is scheduled to begin in the spring of 2007, and will take approximately 15-18 months to complete.

After completion of the field work, USACE will prepare a SI Report containing the findings of the SI and recommendations for further action, if any. The MPCA will, under the DSMOA, have general oversight responsibility during the SI and will review and approve the SI Report. Any additional investigation and/or remediation activities will likely take place in or after FY 2008.

Very truly yours,






Richard H. Pfitzenreuter  
Treasurer



Enclosures (2)

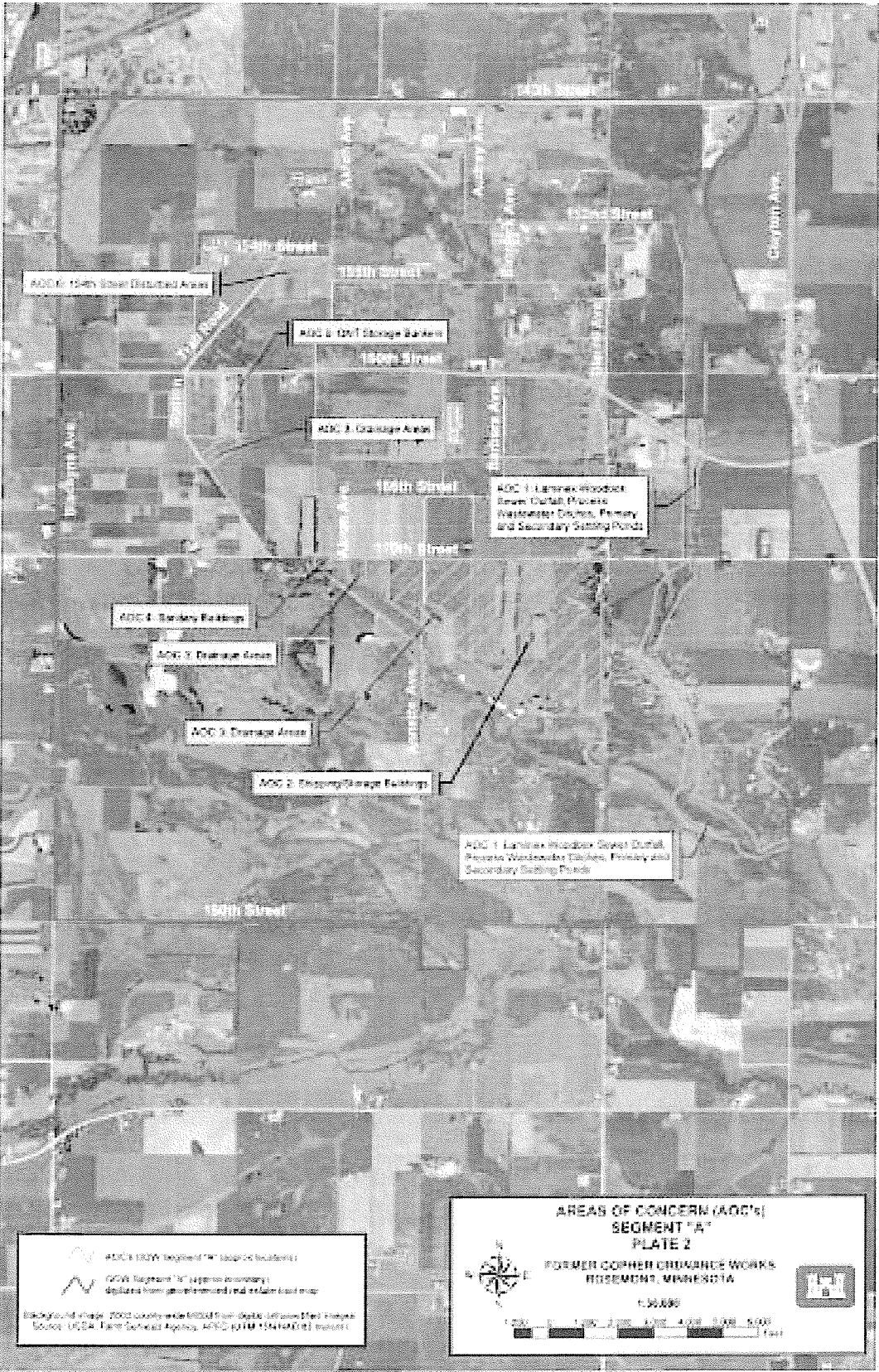
cc: Robbie LaFleur, Minnesota Legislative Reference Library





 Property acquired by the University of Minnesota in 1947 (see inset of 1947 property boundary).  
 Property acquired by the University of Minnesota in 1955 (see inset of 1955 property boundary).  
 1939 Rogers-Walker property boundary.  
 Areas of Ephemeral Wetlands transferred to the University of Minnesota were removed to grassland (1946-1947).  
 Background image: 2003 satellite imagery (MSU) from digital orthorectified images (Source: USDA Farm Service Agency, 2000) (1:250,000) (23 meters).

**POST-WORLD WAR II**  
**LAND OWNERSHIP**  
**PLATE 4**  
**FORMER GOPHER GRASSLAND WOODS,**  
**ROSEMONT, MINNESOTA**  
 1:30,000



 AOC's BROW (background) (AOC's location)  
 AOC's Boundary (AOC's boundary)  
 Symbols from geospatial data and other data maps  
 Background image: 2002 aerial photo from Google Earth  
 Source: USGS, Earth Software Agency, AOC (AOC) (AOC)

**AREAS OF CONCERN (AOC'S)**  
**SEGMENT "A"**  
**PLATE 2**  
 FORMER COPPER CHINADE WORKS  
 ROSEMONT, MINNESOTA  
 1:50,000

0 1000 2000 3000 4000 5000  
 Feet