



STATE OF MINNESOTA  
MUNICIPAL BOARD

Suite 165 Metro Square  
7th & Robert Streets  
St. Paul, Minnesota 55101

November 9, 1988

Robert Grasslin  
St. Cloud City Clerk  
400 - 2nd Street, South  
St. Cloud, Minnesota 56301-3699

Docket Number A-4510

Ordinance Number 1366 Amending 1360

City of St. Cloud

Dear Mr. Grasslin:

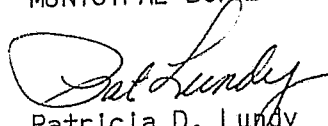
The Minnesota Municipal Board has now processed and approved the above ordinance in accordance with Minnesota Statutes, Chapter 414, and the Rules of Procedure.

According to law, this annexation ordinance must be filed with the Township Clerk, County Auditor, Secretary of State, and the Municipal Board. (Since the ordinance has already been filed with the Municipal Board, no additional copies are required.) We also recommend that you file the ordinance with the County Recorder.

The annexation is final upon the date the ordinance is approved by the Board, which is the date of this letter.

Sincerely,

MUNICIPAL BOARD

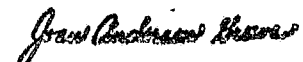
  
Patricia D. Lundy  
Assistant Director

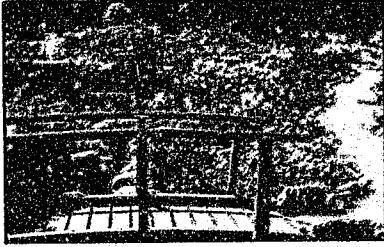
PDL:sg

cc: Sherburne County Auditor  
Haven Township Clerk  
Jan F. Petersen, Attorney at Law  
Kurt A. Deter, Attorney at Law  
Chris Hagelle, City Planning Director  
Secretary of State

39003  
STATE OF MINNESOTA  
DEPARTMENT OF STATE  
FILED.

APR 10 1989

  
Secretary of State



*St. Cloud*

CITY OF  
ST. CLOUD

400 2nd STREET SO.  
ST. CLOUD, MINNESOTA 56301-3699

FINANCE DEPARTMENT - TEL. 612/255-7208

November 15, 1988

Joan Anderson Grove, Secretary of State  
Room 180, State Office Building  
St. Paul, MN 55155

Re: City of St. Cloud Ordinance #1360 and 1366/Annexation of land located  
within Wayside Addition and Wayside Second Addition of Haven Township  
to the City of St. Cloud

Dear Mrs. Grove:

Attached please find a copy of Ordinance #1360 and #1366 relating to the  
annexation of property located within Wayside Addition and Wayside Second  
Addition of Haven Township to the City of St. Cloud. Ordinance #1360 was  
approved by the City Council on September 12, 1988. Ordinance #1366 was  
approved by the St. Cloud City Council on October 10, 1988.

If you should need anything further, please contact my office.

Sincerely,

*Marvin C. Brunzell*  
Marvin C. Brunzell  
Director of Finance

MCB/sp  
Enclosure

cy: Rob Grasslin, City Clerk

Proposed Ordinance No. 10 52

Ordinance No. 1366

ORDINANCE AMENDING ST. CLOUD  
ORDINANCE NO. 1360 RELATING TO  
THE ANNEXATION OF LANDS WITHIN  
WAYSIDE ADDITION, WAYSIDE ADDITION  
PLAT 2 OF HAVEN TOWNSHIP, SHERBURNE  
COUNTY, MINNESOTA

THE COUNCIL OF THE CITY OF ST. CLOUD HEREBY ORDAINS:

SECTION 1. That Section 2 of St. Cloud Ordinance No. 1360 is hereby amended to read as follows:

SECTION 2. That the corporate limits of the City of St. Cloud are hereby extended to include the platted land described as follows and the same is hereby annexed to and included within the City of St. Cloud, Minnesota.

Lots 1, 2, 3 and 4, Block 1, Wayside Addition

Lots 1, 2, 3, 4, 5, 6, 7 and 8, Block 2, Wayside Addition

Lots 1, 2, 3, 4, 5, 6, 7, 8, 9, 10, 11, 12, 13, 14, 15 and 16, Block 3, Wayside Addition

Lots 1, 2, 3, 4, 5, 6, 7, 8, 9, 10, 11, 12, 13 and 14, Block 1, Wayside Addition Plat 2

Lots 1, 2, 3, 4, 5, 6, 7 and 8, Block 2, Wayside Addition Plat 2

Lots 1, 2, 3, 4, 5, 6, 7, 8, 9, 10 and 11, Block 3, Wayside Addition Plat 2

All portions of Wayside Drive, Edgewood Road and Crest Road

Ordinance No. 1366

Adopted by the Council of the City of St. Cloud at a regular meeting held October 10, 1988, by the following vote:

AYES: Councilmen Meyer, Nahan, Salk and Winkelman

NAYS: None

ABSENT: Councilmen Donlin and Weiss, and Councilwoman Hollern

Charles B. Winkelman  
City Council President

Approved by the Mayor of the City of St. Cloud this 13th  
day of October, 1988.

[Signature]  
Mayor of the City of St. Cloud

Attest:

[Signature]  
City Clerk

STATE OF MINNESOTA  
COUNTY OF STEARNS  
CITY OF ST. CLOUD

I, Marvin C. Brussell, Director of Finance/Deputy City Clerk of the City of St. Cloud, Minnesota, do hereby certify that the above and foregoing is a true and correct copy of Ordinance 1366 (passed-adopted) by the City Council of the City of St. Cloud, Minnesota.  
WITNESS MY HAND AND THE SEAL OF THE CITY OF ST. CLOUD,  
MINNESOTA, This the 14th day of Nov, 19 88

Marvin C. Brussell

Deputy City Clerk  
City of St. Cloud, MN

1988 13 day of Oct.

A. D. 19 88

[Signature]  
City Clerk

SECTION 3. That the mill levy on the area hereby annexed to the City of St. Cloud shall be increased in substantially equal proportions over a six-year period to equality with the mill levy on property already within the City of St. Cloud.

SECTION 4. The City Clerk is hereby directed to file certified copies of this ordinance with the Minnesota Municipal Board, the Secretary of State, the Haven Town Clerk, and the Sherburne County Auditor.

PROPOSED ORDINANCE NO. 1042

Ordinance No. 1360

AN ORDINANCE ANNEXING LAND LOCATED WITHIN WAYSIDE  
ADDITION AND WAYSIDE SECOND ADDITION OF HAVEN TOWNSHIP,  
SHERBURNE COUNTY, MINNESOTA TO THE CITY OF  
ST. CLOUD, MINNESOTA PURSUANT TO MINNESOTA  
STATUTES SECTION 414.033, SUBDIVISION 4,  
PERMITTING ANNEXATION BY ORDINANCE

THE COUNCIL OF THE CITY OF ST. CLOUD HEREBY ORDAINS:

SECTION 1. That the territory known as Wayside Addition and Wayside Second Addition of Haven Township, Sherburne County, Minnesota, described more fully herein, abuts upon the City limits of the City of St. Cloud, is not now included within the limits of any city, and is or is about to become urban or suburban in character.

SECTION 2. That the corporate limits of the City of St. Cloud are hereby extended to include the platted land described as follows and the same is hereby annexed to and included within the City of St. Cloud, Minnesota.

Lots 1, 2, 3 and 4, Block 1, Wayside Addition

Lots 1, 2, 3, 4, 5, 6, 7 and 8, Block 2, Wayside Addition

Lots 1, 2, 3, 4, 5, 6, 7, 8, 9, 10, 11, 12, 13, 14, 15 and 16,  
Block 3, Wayside Addition

Lots 1, 2, 3, 4, 5, 6, 7, 8, 9, 10, 11, 12, 13 and 14, Block 1,  
Wayside Addition Plat 2

Lots 1, 2, 3, 4, 5, 6, 7 and 8, Block 2, Wayside Addition Plat 2

Lots 1, 2, 3, 4, 5, 6, 7, 8, 9, 10 and 11, Block 3, Wayside  
Addition Plat 2

All portions of Wayside Drive, Edgewood Road and Crest Road

That portion of County State Aid Road No. 8 adjacent to and west  
of Blocks 1 and 3 of Wayside Addition lying between the west  
boundary of said Blocks 1 and 3 and the centerline of said County  
State Aid Road No. 8.

That portion of County State Aid Highway No. 22 adjacent to and  
south of Blocks 2 and 3 of Wayside Addition and adjacent to and  
south of Blocks 1 and 3 of Wayside Addition Plat 2 lying between  
the south boundary of said Blocks 2 and 3 of Wayside Addition and  
Blocks 1 and 3 of Wayside Addition Plat 2 and the centerline of  
County State Aid Highway No. 2

Ordinance No. 1360

Adopted by the Council of the City of St. Cloud at a regular meeting held September 12, 1988, by the following vote:

AYES: Councilmen Meyer, Nahan, Salk, Weiss, and Winkelman

NAYS: None

ABSENT: Councilman Donlin and Councilwoman Hollern

Charles D. Winkelman  
City Council President

Approved by the Mayor of the City of St. Cloud this 13th day of September, 1988.

[Signature]  
Mayor of the City of St. Cloud

Attest:

[Signature]  
City Clerk

39003

STATE OF MINNESOTA  
DEPARTMENT OF STATE  
FILED

APR 10 1989

[Signature]  
Secretary of State

STATE OF MINNESOTA  
COUNTY OF STEARNS  
CITY OF ST. CLOUD

I, Marvin C. Brunzell, Director of Finance/Deputy City Clerk of the City of St. Cloud, Minnesota, do hereby certify that the above and foregoing is a true and correct copy of Ordinance 1360 (passed-adopted) by the City Council of the City of St. Cloud, Minnesota.

WITNESS MY HAND AND THE SEAL OF THE CITY OF ST. CLOUD, MINNESOTA, This the 14th day of Nov, 1988

[Signature]  
Deputy City Clerk  
City of St. Cloud, MN

Filed this 13 day of Sept.

A. D. 1988

[Signature]  
City Clerk