

An Equal Opportunity Employer

Phone: 296-2428



STATE OF MINNESOTA  
MUNICIPAL BOARD

Suite 165 Metro Square  
7th & Robert Streets  
St. Paul, Minnesota 55101

January 9, 1981

Mr. Darrell Stacy  
City Administrator Assistant  
City Hall  
500 - 4th Avenue N.E.  
Austin, Minnesota 55912

Re: Docket Number A-3742

Ordinance Number 10, 2nd Series

City of Austin

Dear City Clerk:

The Minnesota Municipal Board has now processed and approved the above ordinance and filing fee in accordance with Minnesota Statutes, Chapter 414, and the Rules of Procedure.

According to law, this annexation ordinance must be filed with the Township Clerk, County Auditor, Secretary of State and the Municipal Board. (Since the ordinance has already been filed with the Municipal Board, no additional copies are required.)

The annexation is final upon the date the ordinance is approved by the Board, which is the date of this letter.

Sincerely,

MUNICIPAL BOARD

A handwritten signature in cursive script that reads "Patricia D. Lundy".

Patricia D. Lundy  
Assistant Executive Director

PDL:kj

cc: Secretary of State  
County Auditor  
Township  
Attorney  
Municipality

(REVISED 7/78)

STATE OF MINNESOTA  
DEPARTMENT OF STATE  
FILED

JAN 15 1981

*James Anderson Howe*  
Secretary of State

#33174

ORDINANCE NO. 10 SECOND SERIES

Austin

AN ORDINANCE EXTENDING THE CORPORATE LIMITS OF THE  
CITY OF AUSTIN TO INCLUDE CERTAIN UNINCORPORATED  
LAND ABUTTING THE CITY OF AUSTIN LIMITS.

WHEREAS, a certain petition dated August 7, 1980, requesting annexation of the territory described herein was duly presented to the Common Council on the 18th day of August, 1980, and,

WHEREAS, the quantity of land embraced within the area described in the petition is approximately 1 acre of unplatted land, no part of which is included within the limits of any incorporated city, village, or borough, and,

WHEREAS, the petition was signed by all the owners, and,

WHEREAS, no objections to annexation have been received from the Town Board, the County Board, or the governing body of any municipalities whose boundaries abut upon the land to be annexed, and,

WHEREAS, the land described hereinafter abuts the city limits on the west boundary thereof.

NOW, THEREFORE, THE COMMON COUNCIL OF THE CITY OF AUSTIN DO ORDAIN:

SECTION I: The City Council hereby determines that the annexation will be in the best interest to the City and the territory affected. That the territory described herein abuts the city limits and is urban or suburban in character and that none of said territory is now included within the limits of any city, village, or borough.

SECTION II: The corporate limits of the City of Austin are hereby extended to include the platted land described as follows, the same is hereby annexed to, and included within the city as affectionally as if it had originally been a part thereof:

Lot 3, Block 3, Nob-Hill First Addition

SECTION III: The City Recorder is hereby directed to file certified copies of said ordinance with the Minnesota Municipal Commission, the Austin Township Clerk, County Auditor, County Recorder, Austin Utilities, and the Secretary of State.

SECTION IV: The ordinance takes affect upon its passage and publication, filing of certified copies as directed within Section III.

Passed by a vote of Yeas and Nays this 1st day of December, 1980.

YEAS 6

NAYS 0

APPROVED:

Robert J. Egan  
Mayor

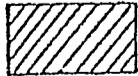
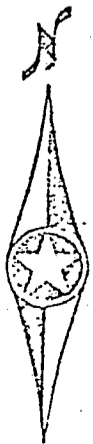
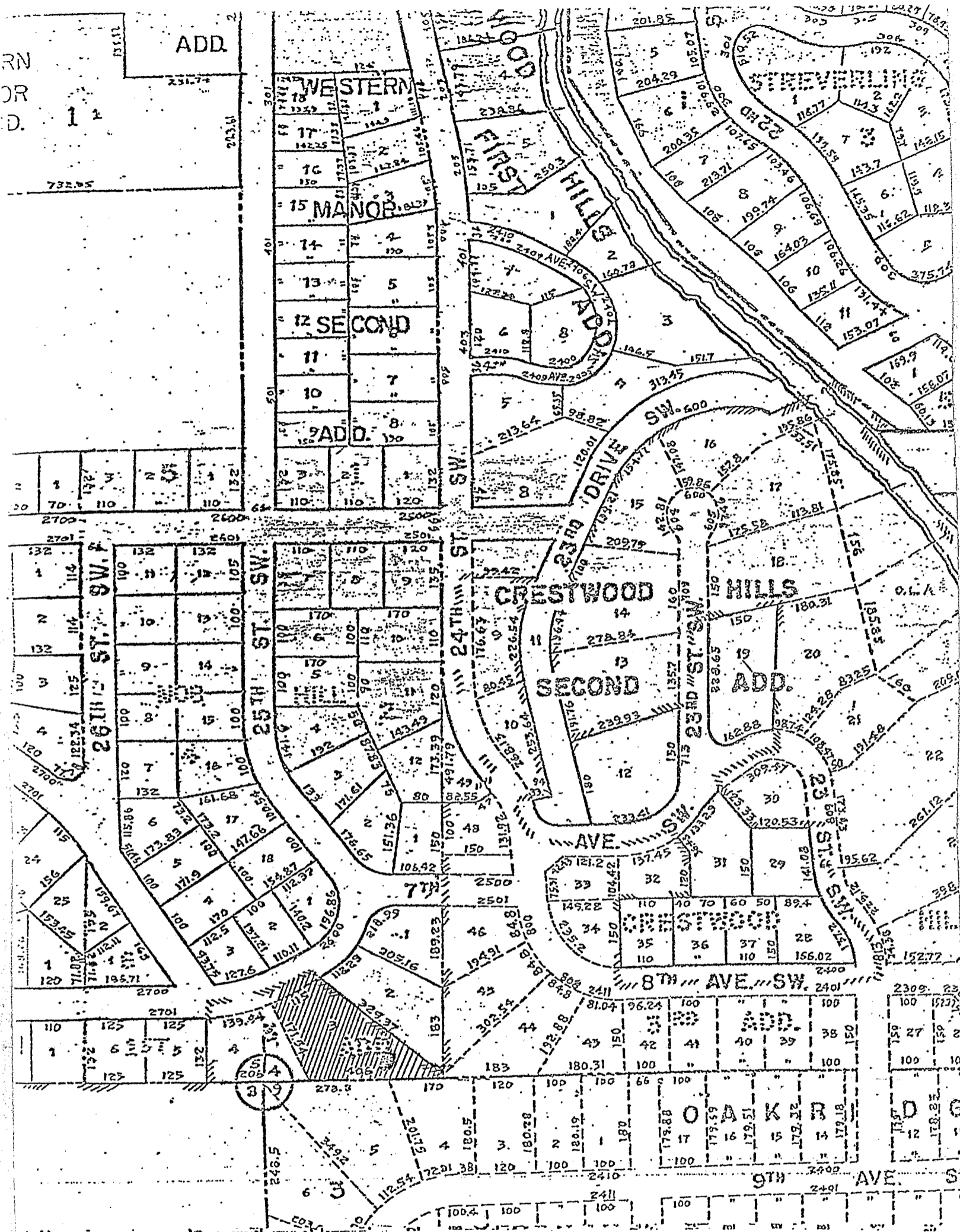
ATTEST:

Richard Benj. Rosen  
City Recorder

STATE OF MINNESOTA  
DEPARTMENT OF STATE  
FILED  
JAN 15 1981  
John Anderson Howe  
Secretary of State

#33174

RN  
OR  
D.



AREA PETITIONED FOR ANNEXATION