

An Equal Opportunity Employer

Phone: 296-2428



STATE OF MINNESOTA
MUNICIPAL BOARD

Suite 165 Metro Square
7th & Robert Streets
St. Paul, Minnesota 55101

February 10, 1978

Ms. Carole Grimm
City Clerk
Room 100, City Hall
Rochester, MN 55901

Re: Docket Number A-2902 City of Rochester
Ordinance Number 1836
Amended Ordinance 1890

Ladies and Gentlemen:

The Minnesota Municipal Board acknowledges receipt and filing of the above Ordinance and filing fee in accordance with Minnesota Statutes, Chapter 414, and the Rules of Procedure.

According to law, this annexation is final upon filing a copy of the ordinance with the Town Clerk, County Auditor, Secretary of State and the Municipal Board. (Since the ordinance has already been filed with the Municipal Board, no additional copies are required.)

Please refer to the above docket and ordinance numbers in any future reference to this annexation.

Sincerely yours,

MUNICIPAL BOARD

Patricia D. Lundy
Assistant Executive Secretary

PDL:es

c.c. Secretary of State ✓
County Auditor
Township
Attorney
Municipality

STATE OF MINNESOTA
DEPARTMENT OF STATE
FILED
FEB 22 1978
Joan Anderson Howe
Secretary of State

31302

ORDINANCE NO. 1036
AN ORDINANCE ANNEXING
TO THE CITY OF ROCHESTER,
MINNESOTA, CERTAIN
UNPLATTED LAND NOT EX-
CEEDING 700 ACRES IN AREA
IN SECTION 34, TOWNSHIP 107
NORTH, RANGE 14 WEST,
OLMSTED COUNTY, MINNE-
SOTA, AND ESTABLISHING
THE ZONING THEREFOR.
THE COMMON COUNCIL OF THE
CITY OF ROCHESTER DO OR-
DAIN:

Section 1. A petition has been filed with the Common Council of the City of Rochester, signed by a majority of the owners of the land described herein, requested the Common Council to annex said land to the City of Rochester. The land described in said petition for annexation is located in Cascade Township, Olmsted County, Minnesota, and is described as follows:

That part of the West Half, Northwest Quarter, Section 34, Town 107, Range 14, Olmsted County, Minnesota, lying between the centerline of Trunk Highway 14 and the southerly right-of-way line of the Chicago and Northwestern Railway Company, excepting therefrom that part thereof platted as a part of Arend's Industrial Park First Subdivision, and also excepting therefrom that part thereof described by metes and bounds as follows: Commencing at the Southwest corner of said Northwest Quarter, thence on an assumed bearing of South 89°46'20" East, along the south line of said Northwest Quarter, a distance of 1,321.84 feet to a point on the east line of said West Half Northwest Quarter; thence said North 00°02'40" West, along said east line, a distance of 1,114.76 feet to a point in the northerly right-of-way line of Trunk Highway 14, said point being the point of beginning of the tract herein to be described; thence continue North 00°02'40" West, along said east line, a distance of 511.47 feet to a point in the southerly right-of-way line of the Chicago and Northwestern Railroad; thence North 72°54'10" West, along said right-of-way line, a distance of 155.18 feet; thence South 18°10'04" West a distance of 482.95 feet to a point in the northerly right-of-way line of said Trunk Highway 14; thence South 71°49'56" East, along said right-of-way line, a distance of 315.00 feet to the point of beginning.

Said petition has also been filed with the Town Board of Cascade Township, the County Board of the County of Olmsted, and the Minnesota Municipal Commission, and the Town Board of Cascade Township has notified the City that it has no objection to the annexation of the above described land.

Section 2. The quantity of land included in said petition is approximately 11.4 acres.

Section 3. The Common Council of the City of Rochester does hereby determine that the land described in Section 1 abuts upon the present territorial limits of the City of Rochester, is so conditioned as to be properly subject to municipal government, and the annexation of said land will be in the best interest of the City of Rochester and the land affected.

Section 4. Therefore, the land described in Section 1 above is hereby annexed, added to and made a part of the City of Rochester, Minnesota, as effectually as if it had originally been a part thereof.

Section 5. Present and future owners of the area annexed by this ordinance are hereby notified that in addition to the usual assessments, it is the intention of the Common Council to assess against benefited property all or a portion of the cost of any storm sewer, water tower and trunk line sanitary sewer construction heretofore or hereafter undertaken to serve the area annexed.

Section 6. Pursuant to Rochester Code of Ordinances, § 60.506, as enacted by Ordinance No. 1659, known as the Zoning Ordinance of the City of Rochester, the land annexed to the City of Rochester as hereinabove described is zoned as M-2 FF General Industrial District.

Section 7. This ordinance shall take effect and be in force from and after its official publication and from and after the filing of a certified copy hereof with the Minnesota Municipal Commission, the Cascade Township Clerk, the County Auditor, and the Secretary of State.

Passed and adopted by the Common Council of the City of Rochester, Minnesota, this 19 day of April, 1976.

/s/R.J. Postler
President of said
Common Council
Attest: /s/Carole A. Grimm
City Clerk

Approved this 20th day
of April, 1976.
/s/Alex P. Smekta
Mayor of said City

(Seal of the City of
Rochester, Minnesota)

#1836

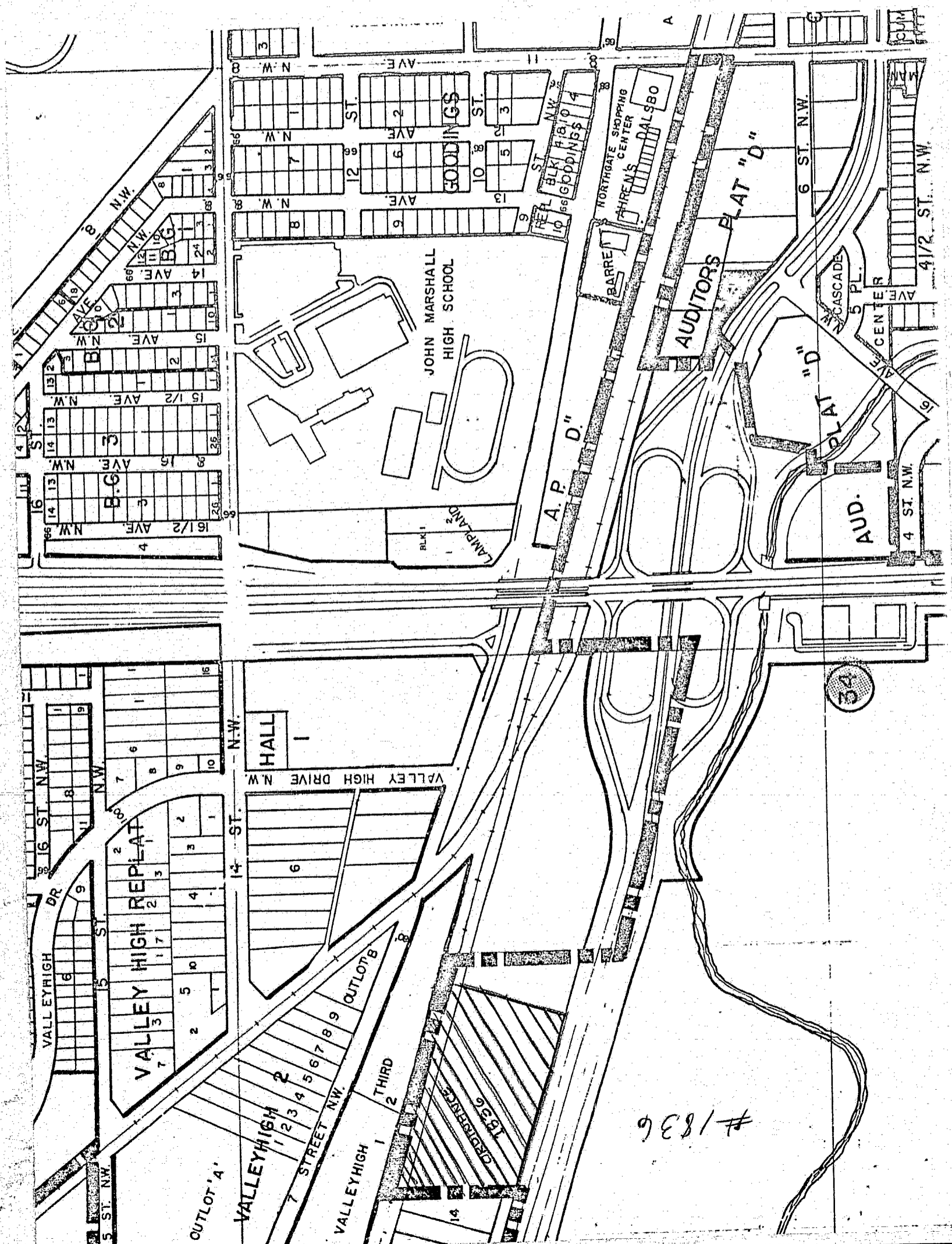
State of Minnesota,
County of Olmsted,
City of Rochester, SS

I, Sharon K. Ayers, Deputy City Clerk of the City of Rochester,
Minnesota do hereby certify that I have compared the attached
copy of an ordinance with the original ordinance on file in
my office and that the foregoing is a true and correct copy
of the said ordinance and of the whole thereof.
Witness my hand this 10th day of August, 1976.

Sharon K. Ayers
Deputy City Clerk of Rochester, MN

(Seal of the City of
Rochester, Minnesota)

STATE OF MINNESOTA
DEPARTMENT OF STATE
FILED
FEB 22 1978
Grant Anderson Howe
Secretary of State



#1836

ORDINANCE NO. 1870
AN ORDINANCE AMENDING
ORDINANCE NO. 1836 RELAT-
ING TO THE ANNEXATION TO
THE CITY OF ROCHESTER,
MINNESOTA, OF CERTAIN
UNPLATTED LAND NOT EX-
CEEDING 200 ACRES IN AREA
IN SECTION 34, TOWNSHIP 107
NORTH, RANGE 14 WEST,
OLMSTED COUNTY, MINNE-
SOTA, AND ESTABLISHING
THE ZONING THEREFOR.
THE COMMON COUNCIL OF THE
CITY OF ROCHESTER DO OR-

DAIN:

Section 1. In order to correct an error in the description of property annexed to the City of Rochester, Minnesota, by Ordinance No. 1836 relating to certain unplatted land in Section 34, Township 107 North, Range 14 West, Cascade Township, Olmsted County, Minnesota, section one of said ordinance is amended in part by deleting the description contained therein and inserting in lieu thereof the following description:

That part of the West Half, Northwest Quarter, Section 34, Township 107 North, Range 14 West, Olmsted County, Minnesota, lying between the center-line of Trunk Highway 14 and the southerly right-of-way line of the Chicago and Northwestern Railway Company, excepting therefrom that part thereof platted as a part of Arend's Industrial Park First Subdivision.

Section 2. Subject to the above amendment, Ordinance No. 1836 shall continue in full force and effect.

Section 3. This ordinance shall take effect and be in force from and after its official publication and from and after the filing of a certified copy hereof with the Minnesota Municipal Commission, the Cascade Town Clerk, the County Auditor, and the Secretary of State. Passed and adopted by the Common Council of the City of Rochester, Minnesota, this 21st day of March, 1977.

/s/R. J. Postler
President of said
Common Council

Attest: /s/Carole A. Grimm
City Clerk

Approved this 22nd day
of March, 1977.

/s/Alex P. Smekta
Mayor of said City

(Seal of the City of
Rochester, Minnesota)
(3/26, 4/2)

31302
O.D.

#1890

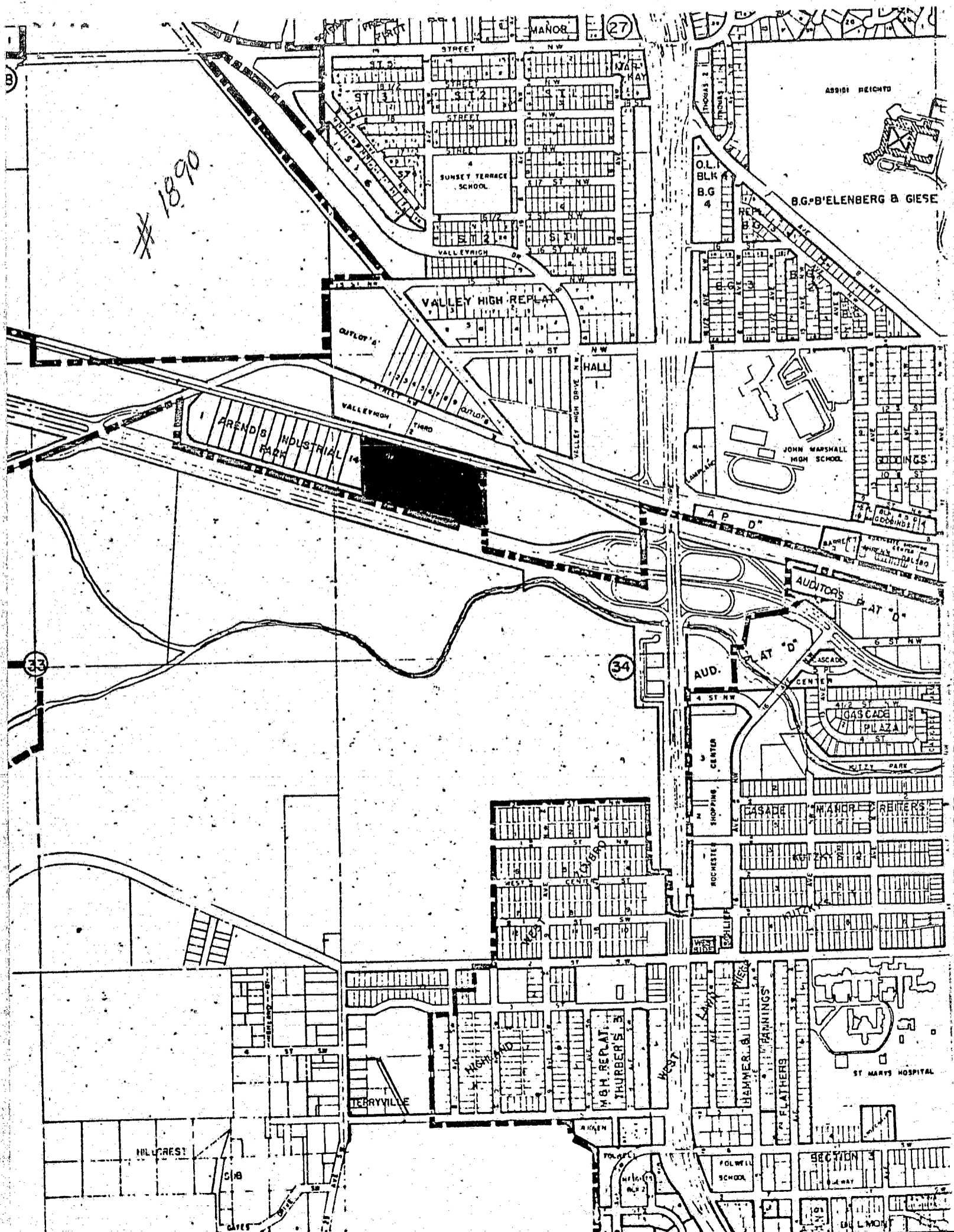
STATE OF MINNESOTA)
COUNTY OF OLMSTED) SS
CITY OF ROCHESTER)

I, Evalyn M. Langworthy, Deputy City Clerk of the City of Rochester, Minnesota, do hereby certify that I have compared the attached copy of an ordinance with the original ordinance on file in my office and that the foregoing is a true and correct copy of the said ordinance and of the whole thereof. Witness my hand this 2 day of May, 1977.

Evalyn M. Langworthy
Deputy City Clerk of the
City of Rochester, Minnesota

(Seal of the City of
Rochester, Minnesota)

STATE OF MINNESOTA
DEPARTMENT OF STATE
FILED
FEB 24 1978
Joan Anderson
Secretary of State



1890

MANOR (27)

SUNSET TERRACE SCHOOL

VALLEY HIGH REPLAT

VALLEY HIGH DRIVE

AREND'S INDUSTRIAL PARK

ASSIDE HEIGHTS

B.G. B'ELENBERG & GIESE

JOHN MARSHALL HIGH SCHOOL

AUDITORS PLAT 'D'

AUD. CENTER

GASCADE PLAZA

SHOPPING CENTER

ROCHESTER

FLATBERRINGS

ST. MARY'S HOSPITAL

TERRYVILLE

H.G. REPLAT THURBER'S

FOLWELL SCHOOL

SECTION 5

MILFREST

33

34