

"Up Where the Lakes Begin"

CITY OF WILLMAR

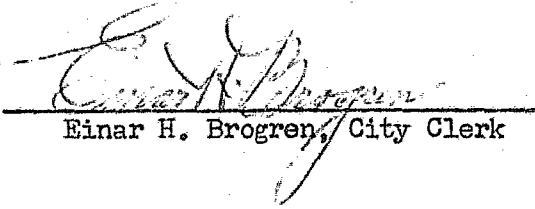
OFFICE OF THE CITY CLERK

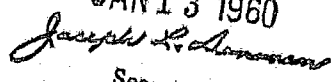
MUNICIPAL AUDITORIUM
WILLMAR, MINNESOTA

CERTIFICATE OF THE CITY CLERK:

I, Einar H. Brogren, City Clerk of the City of Willmar, Minnesota, do hereby certify that the Ordinance hereto attached is a true and correct copy of Ordinance No. 409 (Annexation of Lots 7 and 8 of Ferring's Third Addition) which was passed and adopted by the City Council of the City of Willmar on January 6th, 1960.

Dated at Willmar, Minnesota, this 7th day of January, 1960.


Einar H. Brogren, City Clerk

#14398
STATE OF MINNESOTA
DEPARTMENT OF STATE
FILED
JAN 13 1960

Secretary of State

83 E 11

ORDINANCE NO. 409
(Special)

An Ordinance Extending the Corporate Limits of the City of Willmar to Include Certain Platted Land known as Part of Ferring's Third Addition to the City of Willmar.

(Adopted pursuant to Laws 1959, Chapter 686, Section 3, Subdivision 7, paragraph 4.)

Section 1. A Petition has been filed with the City Council of the City of Willmar, Minnesota, by all of the owners (in number and amount) of the following described real estate to have such land included within the City of Willmar, Minnesota, which land is described as follows:

Lots Seven and Eight (7 & 8) of Ferring's Third Addition to the City of Willmar, Kandiyohi County, Minnesota, according to the recorded plat thereof.

Section 2. The quantity of land embraced within the foregoing description, and bounded as described, is 1.36 acres.

Section 3. The City Council hereby determines:

(1) That the annexation will be to the best interest of the City of Willmar, Minnesota, and of the territory affected;

(2) That the territory described herein abuts upon the City and is so conditioned as properly to be subjected to City government.

Section 4. The corporate limits of the City are hereby extended to include the property described in Section 1 hereof, and the same is hereby annexed to and included in the City as effectually as if it had originally been a part thereof.

Section 5. The City Clerk is hereby directed to file certified copies of this Ordinance with the Minnesota Municipal Commission, the County Auditor of the County of Kandiyohi, and the Secretary of State of the State of Minnesota.

Section 6. The said property, upon the taking effect of this Ordinance, as described in Section 1, having been heretofore platted as a part of Ferring's Third Addition to the City of Willmar, will remain as a part of said Addition.

Section 7. This Ordinance takes effect upon its passage and publication and the filing of the certified copies as directed herein.

Approved January 5th, 1960

ERWIN W. RAU
Mayor

This Ordinance was given its first reading on December 2nd, 1959, second reading on December 16th, and the third and final reading on January 6th, 1960

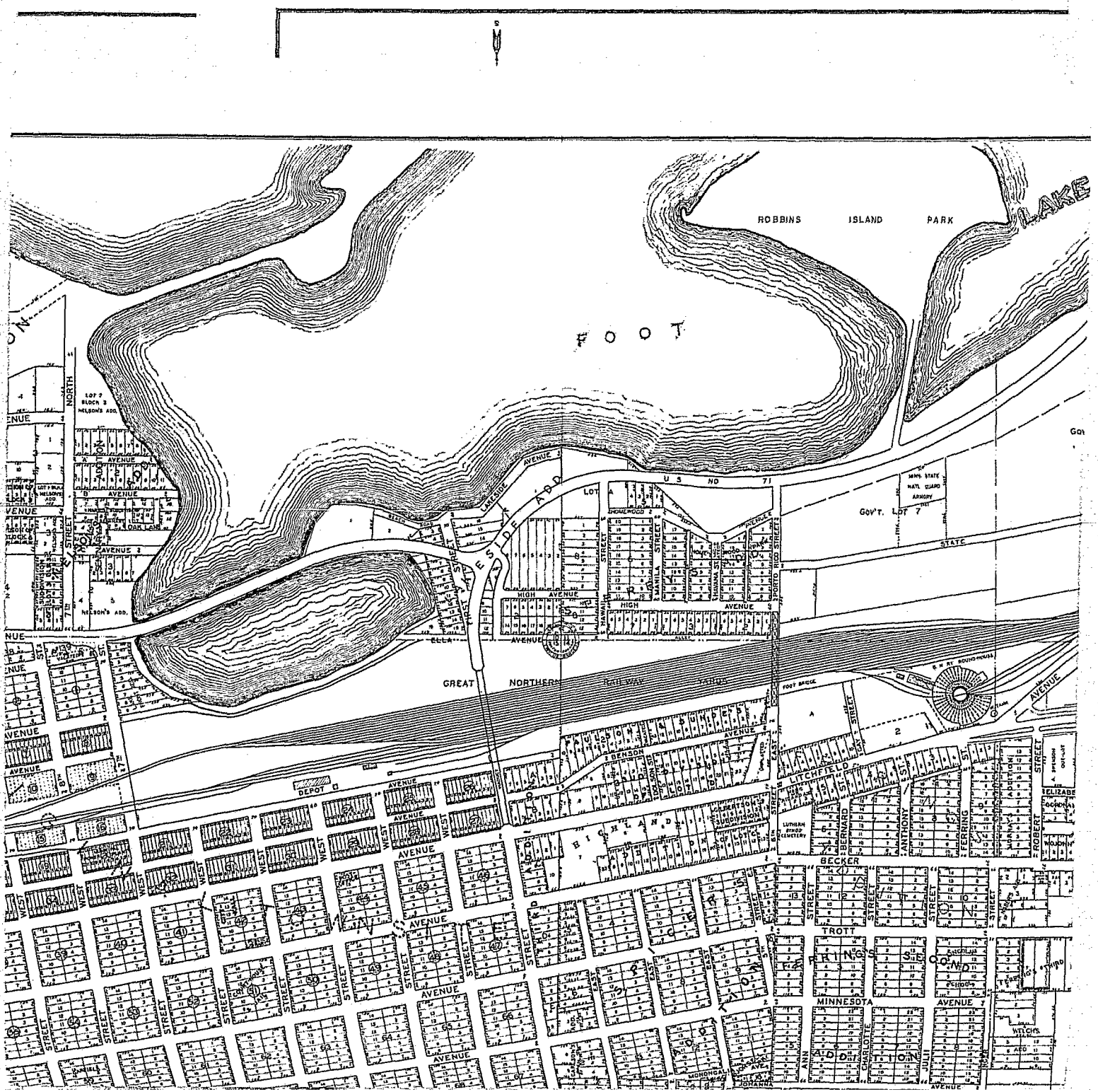
First Reading	November 18, 1959	XXXXXXXXXXXXXX
Second Reading	December 2, 1959	XXXXXXXXXXXXXX
Third Reading	December 16, 1959	

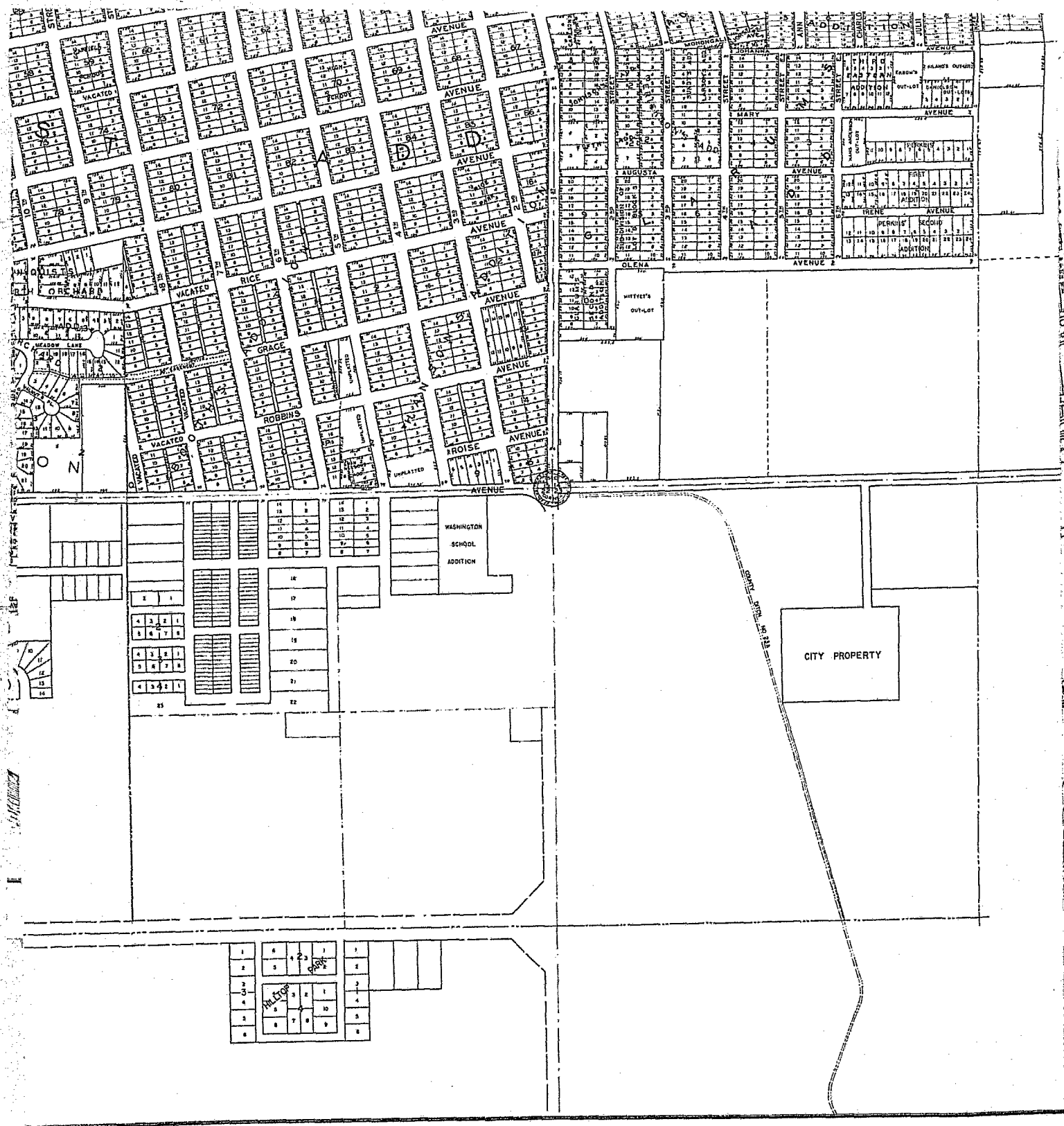
#14398

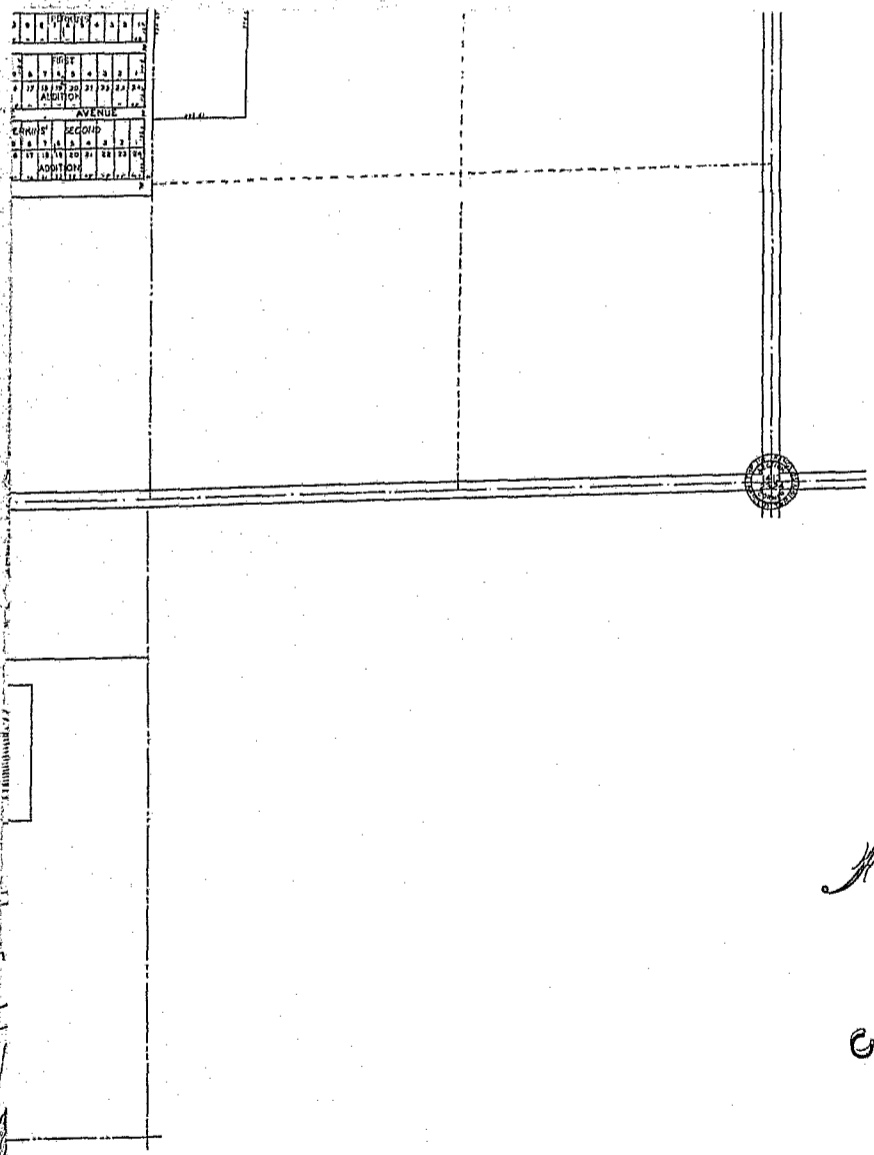
STATE OF MINNESOTA
DEPARTMENT OF STATE
JAN 13 1960
James H. Johnson
Secretary of State

14398



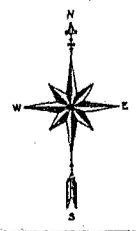






MAP
 OF THE
 CITY OF WILLMAR
 MINNESOTA

SCALE IN FEET
 0 100 200 300 400 500



COMPILED & DRAWN BY
 G. E. MERTENS
 REVISED FEB. 1957
 BY
 NEIL R. ERICKSON
 CITY ENGINEER

14398
O.D.

STATE OF MINNESOTA
DEPARTMENT OF STATE
FILED
JAN 15 1960
James H. ...
Secretary of State